



Madison, Wisconsin

# CITY OF MADISON

## CITY ENGINEERING DIVISION

### DEPARTMENT OF PUBLIC WORKS

# PLAN OF PROPOSED IMPROVEMENT

## 1109-1123 S PARK STREET

CITY PROJECT NO. 13044

CONTRACT NO. 8926

MUNIS NO. 13044

#### INDEX OF SHEETS

SHEET NO.	NOTES AND DETAILS
D1-D2	NOTES AND DETAILS
P1-P2	SIDEWALK PLAN & PROFILES
P3	ALLEY PLAN & PROFILE
U1	UTILITY PLAN
L1	LANDSCAPING PLAN
X1	CROSS SECTIONS
MN1	MAINTENANCE MAP



**PROJECT  
LOCATION**

PUBLIC IMPROVEMENT PROJECT  
APPROVED

JULY 14, 2020

BY THE COMMON COUNCIL  
OF MADISON, WISCONSIN

PUBLIC IMPROVEMENT DESIGN  
APPROVED BY:

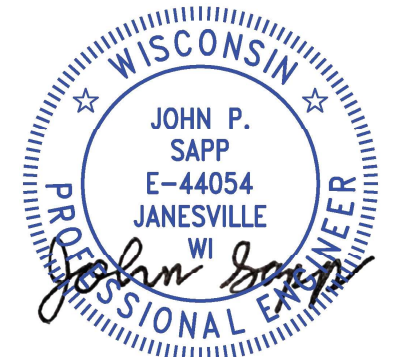
*Greg Fries*

Oct 5, 2020

City Engineer

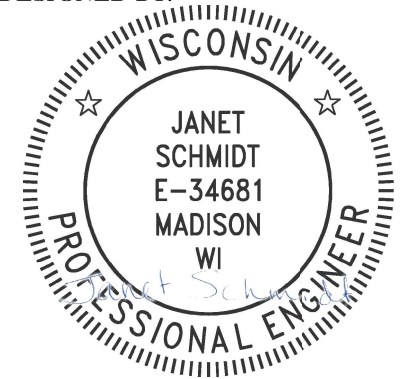
Date

STREET  
DESIGNED BY:



Oct 5, 2020

STORM SEWER  
DESIGNED BY:



Oct 5, 2020

WATER  
DESIGNED BY:

**LATERALS  
ONLY**

SANITARY SEWER  
DESIGNED BY:

**LATERALS  
ONLY**

PLOT SCALE: 1 IN:1 FT\_XREF

PLOT NAME: ---

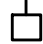


REV. DATE: 10/2/2020 8:28 AM

ORIGINATOR: CITY\_OF\_MADISON

THE LOCATION AND INFORMATION FOR PROPOSED NEW TREES, IN THE PUBLIC RIGHT OF WAY OR ON PUBLIC LANDS ARE APPROXIMATE AND ARE SHOWN FOR REFERENCE ONLY. THE LOCATIONS, SPECIFICATIONS AND PLANTING METHODS OF ALL PROPOSED NEW OR REPLACEMENT TREES IN THE PUBLIC RIGHT OF WAY OR ON PUBLIC LANDS SHALL BE APPROVED BY THE CITY FORESTER PRIOR TO INSTALLATION.

NO TREES IN THE RIGHT OF WAY OR ON PUBLIC LANDS SHALL BE TRIMMED, PRUNED, REMOVED OR ADVERSELY AFFECTED IN ANY WAY UNTIL THE DEVELOPER HAS RECEIVED WRITTEN PERMISSION FROM THE CITY ENGINEER OR CITY FORESTER. SAID WRITTEN PERMISSION SHALL INCLUDE LANGUAGE INDICATING THAT SECTION 10.101 OF THE MADISON GENERAL ORDINANCES AND ADMINISTRATIVE PROCEDURE MEMORANDUM NO. 6-2, REFERRING TO NOTIFICATION OF PROPERTY OCCUPANTS AND/OR OWNERS, HAS BEEN COMPLIED WITH.

DEVELOPER MUST SUBMIT A TRAFFIC CONTROL PLAN TO CITY TRAFFIC ENGINEERING AT LEAST 14 DAYS PRIOR TO THE START OF WORK. WORK SHALL NOT PROCEED UNTIL AN APPROVED TRAFFIC CONTROL PLAN IS IN PLACE

CONVENTIONAL SIGNS	
FIELD VERIFY ALL UTILITY LOCATIONS	
GAS	—— G ——
STORM SEWER	—— ST ——
SANITARY SEWER	—— SAN ——
WATER	—— W ——
BURIED ELECTRIC	—— E ——
OVERHEAD ELECTRIC	—— OH ——
POWER POLE	
ADA COMPLIANT RAMP W/ DETECTABLE WARNING FIELD	
COMBUSTIBLE FLUIDS	

ALL PAVEMENT IN THE S PARK ST RIGHT-OF-WAY SHALL BE 9" CONCRETE PAVEMENT.  
ALL PAVEMENT IN THE EMERSON ST RIGHT-OF-WAY SHALL BE TYPE A PAVEMENT PER STANDARD DETAIL DRAWING 4.02.

UNDERDRAINS SHALL BE INSTALLED PER STANDARD DETAIL DRAWING 4.05 FOR 75' ON EACH SIDE OF THE LOW POINT, OR TO THE NEAREST CURB HIGH POINT. ALL UNDERDRAIN SHALL BE WRAPPED.

ALL GUTTERS SHALL DRAIN WITH A MINIMUM GRADE OF 0.5% TOWARD STORM SEWER INLETS.

ALL DITCHES SHALL DRAIN WITH A MINIMUM GRADE OF 0.5%

THE CROSS SLOPE OF SIDEWALKS AND BARRIER FREE SIDEWALK CURB RAMPS SHALL TYPICALLY BE 1.5%. THE LONGITUDINAL GRADE OF BARRIER FREE SIDEWALK CURB RAMPS SHALL NOT EXCEED 8.33%. ALL SIDEWALK RAMPS SHALL BE CONSTRUCTED ACCORDING TO S.D.D. 3.04. AT ALL OTHER LOCATIONS THE LONGITUDINAL GRADE OF SIDEWALKS SHALL NOT EXCEED 5.0 % OR THE ADJACENT STREET GRADE WHICHEVER IS GREATER NOR BE LESS THAN 0.5% AND SHALL DRAIN TOWARD STORM SEWER INLETS. SIDE SLOPES WITHIN TEN FEET OF A PUBLIC SIDEWALK SHALL NOT EXCEED 4:1. ALL SIDEWALK AND SIDEWALK RAMP ELEVATIONS AND GRADES SHALL BE FIELD VERIFIED AND SET TO COMPLY WITH THE CITY OF MADISON STANDARD SPECIFICATIONS AND THE A.D.A. GUIDELINES.

OBTAIN A PRINT OUT OF THE ALIGNMENTS FROM THE CITY PROJECT ENGINEER PRIOR TO STAKING THIS PROJECT.

CURB STATION AND OFFSETS SHALL BE TO THE EDGE OF PAVEMENT UNLESS OTHERWISE INDICATED. CURB ELEVATIONS SHALL BE TO THE EDGE OF PAVEMENT UNLESS OTHERWISE INDICATED.

POWER POLES AND OTHER OBSTRUCTIONS SHALL BE MOVED TO PROVIDE 2 FEET MINIMUM OF CLEAR DISTANCE FROM ANY FACE OF CURB OR EDGE OF SIDEWALK.

ANY INFORMATION SHOWN ON THIS PLAN, WHICH IS NOT PART OF THIS RIGHT-OF-WAY PROJECT, IS PRELIMINARY AND NOT FOR CONSTRUCTION.

THERE MAY BE EXISTING UTILITIES OR OTHER FEATURES WHICH ARE EITHER NOT SHOWN OR SHOWN INCORRECTLY ON THIS PLAN. IT IS THE RESPONSIBILITY OF THE DEVELOPER TO LOCATE AND IDENTIFY ALL UTILITIES AND TOPOGRAPHY WHICH MAY AFFECT THE CONSTRUCTION OF THESE IMPROVEMENTS.

ALL PERMANENT SIGNING AND POSTING WILL BE DETERMINED AND PROVIDED BY THE TRAFFIC ENGINEERING DIVISION, FOLLOWING CONSTRUCTION OF THESE IMPROVEMENTS.

THE DEVELOPER SHALL PROVIDE, INSTALL AND MAINTAIN ALL STREET END BARRICADES, SIGNING AND TRAFFIC CONTROL, AS REQUIRED BY THE CITY TRAFFIC ENGINEER.

PAVEMENT SAWCUTS SHALL BE AS DIRECTED BY THE CITY CONSTRUCTION ENGINEER. SAWCUTS SHOWN ON THE PLAN ARE APPROXIMATE.

CURB ON CUL DE SACS SHALL BE INSTALLED ACCORDING TO S.D.D 3.05.

ALL WORK IN THE RIGHT OF WAY AND PUBLIC EASEMENTS SHALL BE IN ACCORDANCE WITH THE CITY OF MADISON STANDARD SPECIFICATIONS FOR PUBLIC WORKS CONSTRUCTION



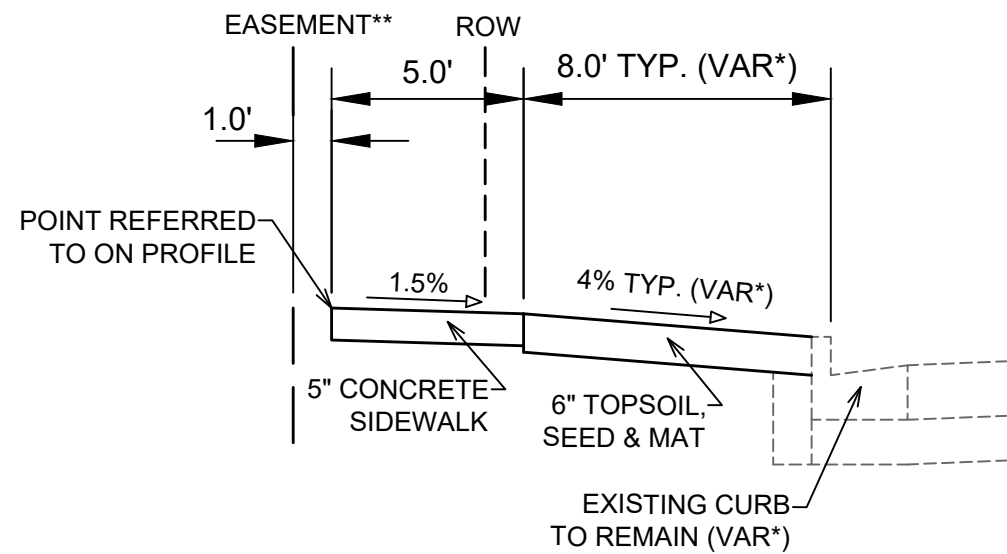
MARK	REVISION	DATE	BY
13044 <td></td> <td>10/3/2020 11:16 PM <td></td> </td>		10/3/2020 11:16 PM <td></td>	

13044  
MADISON, WI  
8926  
CONTRACT NO:

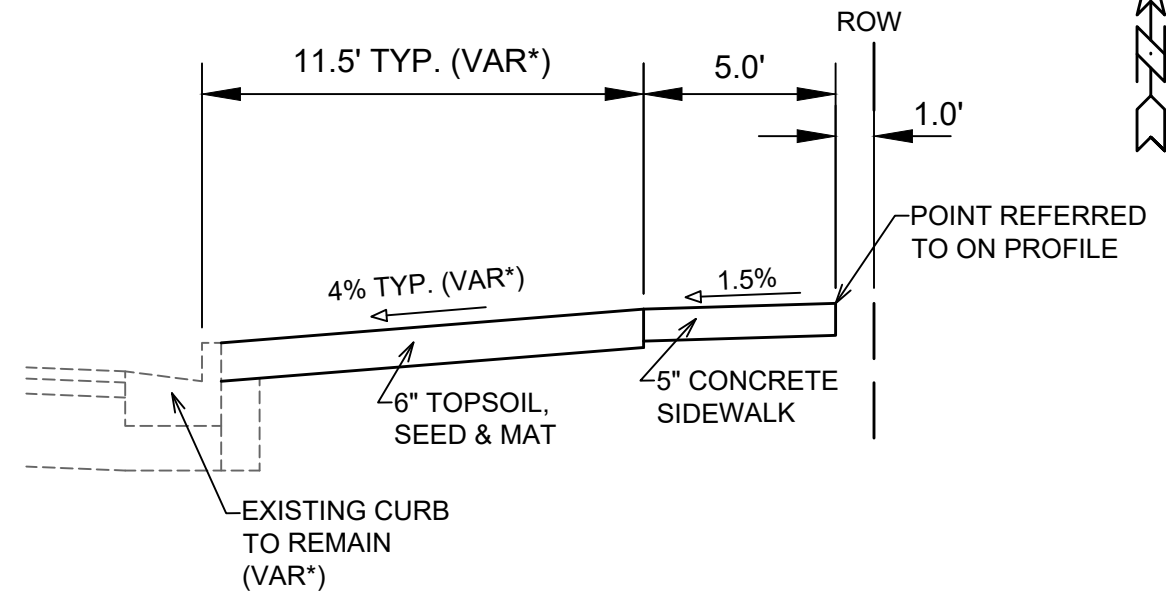
STANDARD NOTES AND COMMENTS  
1109-1123 S PARK STREET  
M:\DESIGN\Projects\13044\CAD\Streets\13044EN-Details.dwg



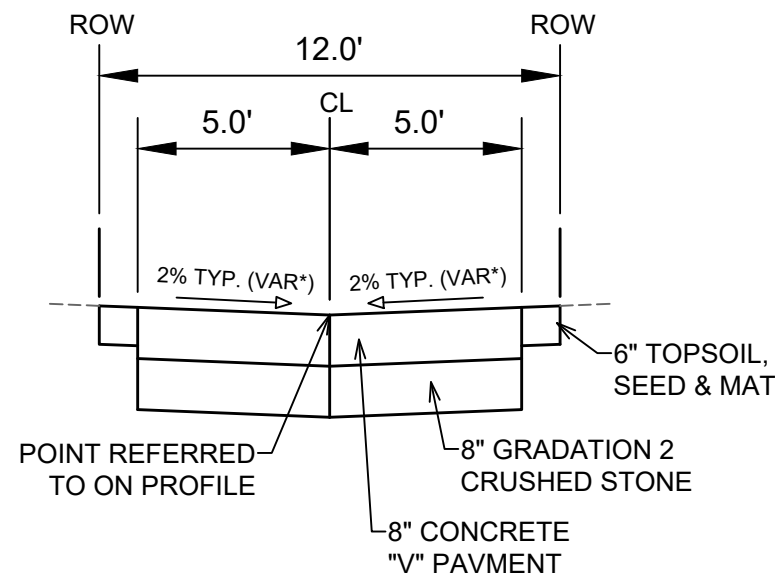
13044  
D-1



**TYPICAL SECTION**  
S PARK ST SIDEWALK



**TYPICAL SECTION**  
EMERSON ST SIDEWALK



**TYPICAL SECTION**  
LOWELL ST ALLEY

**NOTES:**

- S PARK ST SHALL BE CONSTRUCTED AS 9" CONCRETE PAVEMENT

- EMERSON ST SHALL BE CONSTRUCTED AS TYPE 'A' PAVEMENT PER CITY OF MADISON MINIMUM PAVEMENT DESIGN†

\* SEE PLAN AND PROFILE FOR SLOPES, ELEVATIONS AND OFFSETS

\*\* PUBLIC ACCESS SIDEWALK EASEMENT. SEE RECORDED DOCUMENT NO. 5618144

**CITY OF MADISON MINIMUM PAVEMENT DESIGN†**

TYPE	CRUSHED AGGREGATE BASE COURSE		ASPHALTIC CONCRETE PAVEMENT			
	LOWER LAYER GRADATION 1	UPPER LAYER GRADATION 2	LOWER LAYER		UPPER LAYER	
			TYPE	THICKNESS	TYPE	THICKNESS
A	6"	6"	4 LT 58-28 S	1.75"	4 LT 58-28 S	1.75"
B	6"	6"	3 LT 58-28 S	2.50"	4 LT 58-28 S	2.00"
C	6"	6"	3 MT 58-28 S/H	3.50"	4 MT 58-28 S/H	2.00"

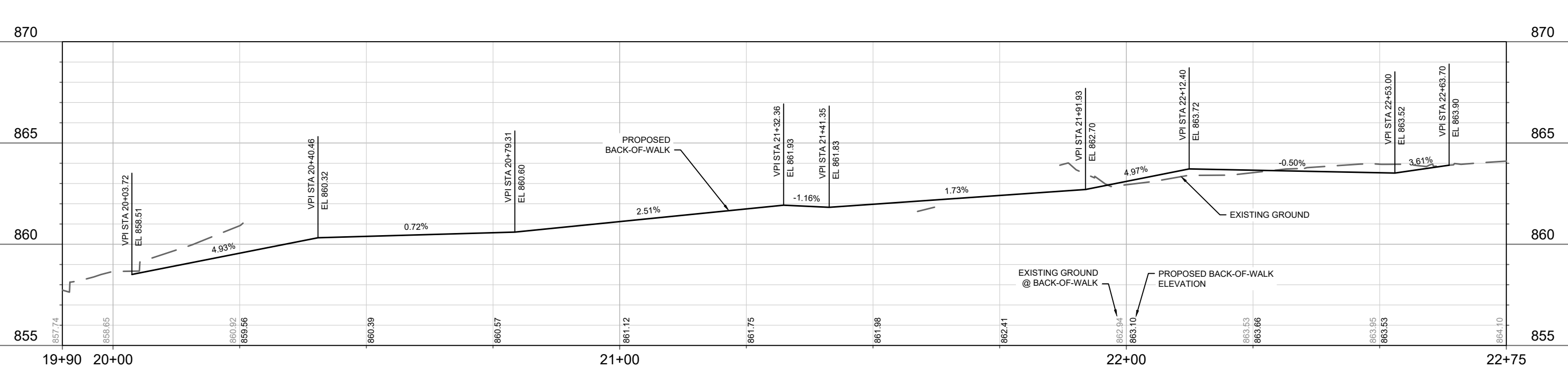
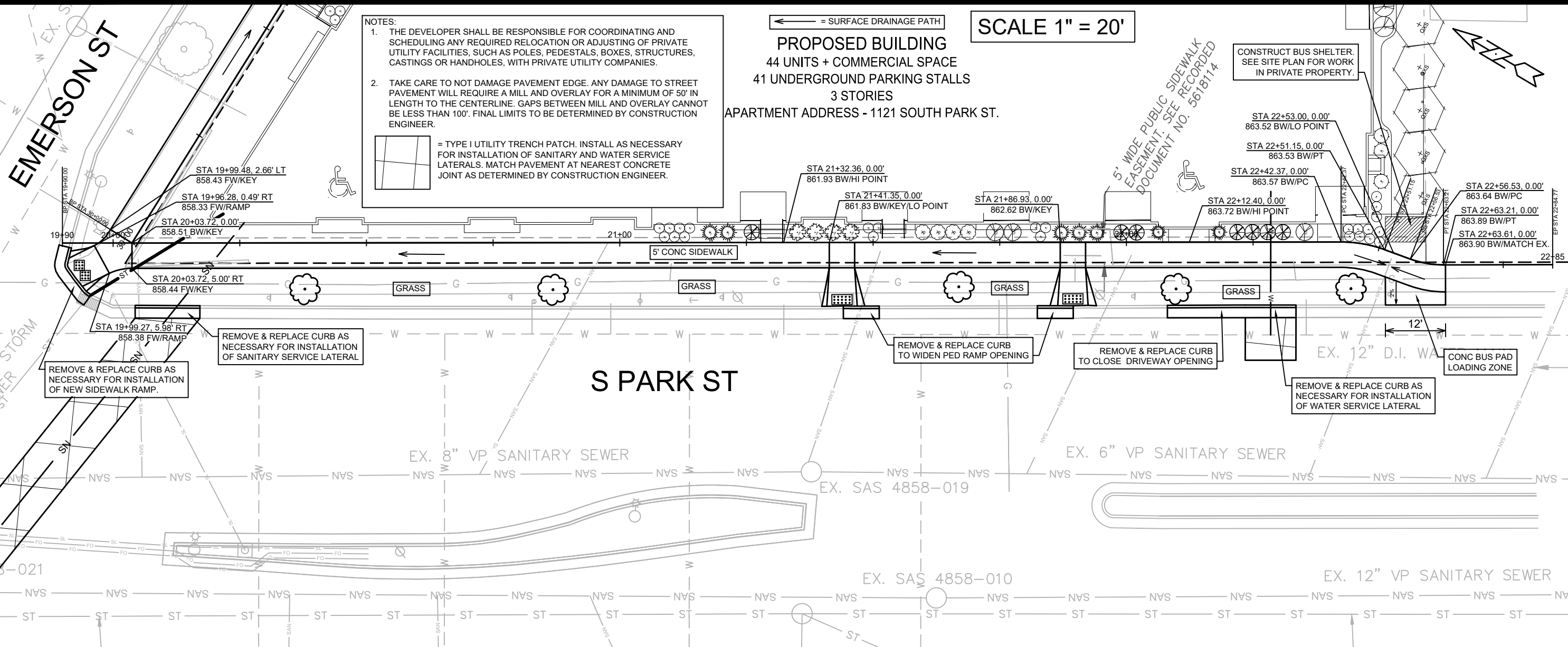
MARK	REVISION	DATE	BY
13044	10/3/2020 11:16 PM	13044	D-2

13044  
MADISON, WI  
8926  
CONTRACT NO:

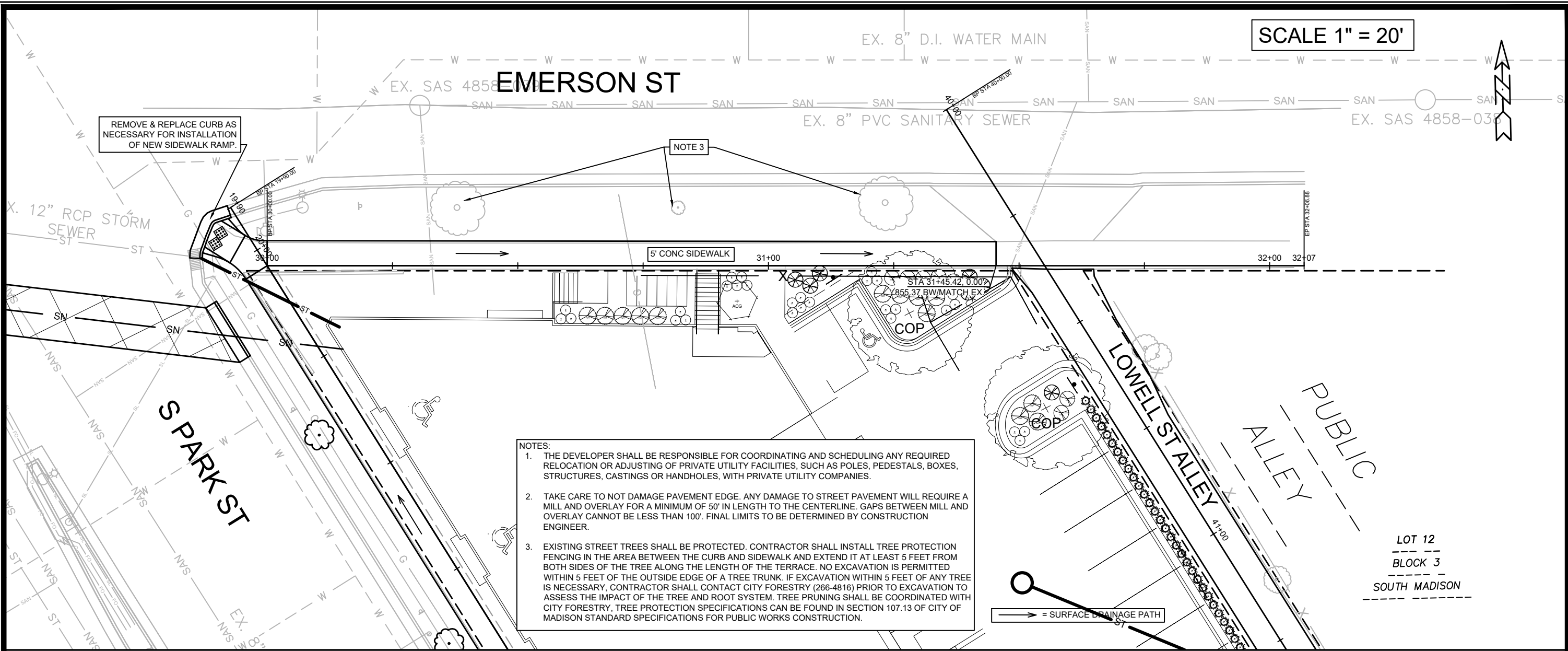
TYPICAL SECTIONS  
1109-1123 S PARK STREET  
M:\DESIGN\Projects\13044\CAD\Streets\13044EN-Details.dwg



13044  
D-2



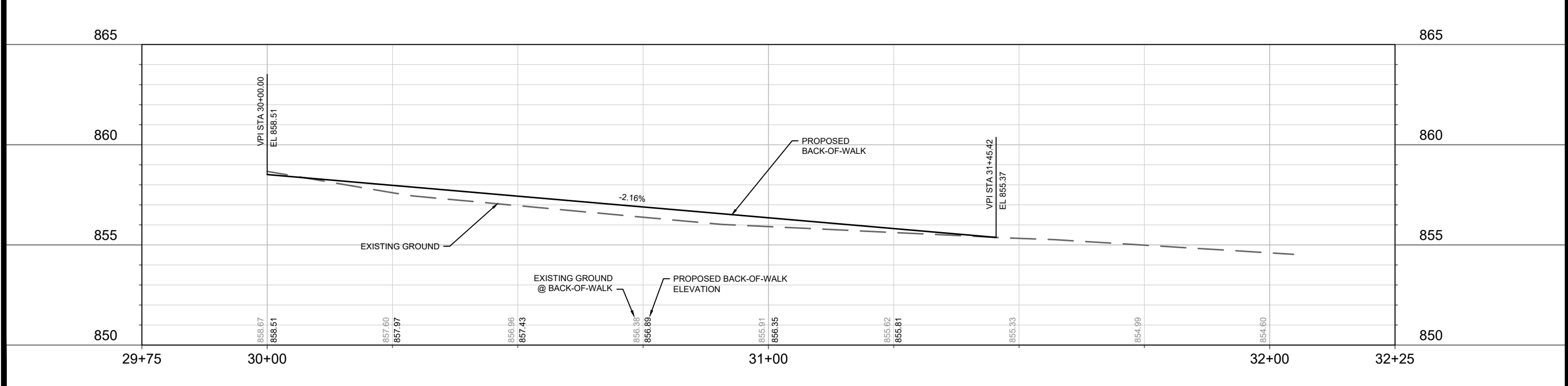
DATE	BY	Scale: 1" = 20'	P-1
REVISION	DATE		
MARK	DESIGNED BY: AUC	13044	
CONTRACT NO: 8926		13044	
MADISON, WI		13044	
S PARK ST SIDEWALK - PLAN & PROFILE		13044	
1109-1123 S PARK STREET		13044	
M:\DESIGN\Projects\13044\CAD\Streets\13044EN-PrP.dwg		13044	
CITY OF MADISON WISCONSIN		13044	
13044		13044	
P-1		13044	



SCALE 1" = 20'



- NOTES:
1. THE DEVELOPER SHALL BE RESPONSIBLE FOR COORDINATING AND SCHEDULING ANY REQUIRED RELOCATION OR ADJUSTING OF PRIVATE UTILITY FACILITIES, SUCH AS POLES, PEDESTALS, BOXES, STRUCTURES, CASTINGS OR HANDHOLES, WITH PRIVATE UTILITY COMPANIES.
  2. TAKE CARE TO NOT DAMAGE PAVEMENT EDGE. ANY DAMAGE TO STREET PAVEMENT WILL REQUIRE A MILL AND OVERLAY FOR A MINIMUM OF 50' IN LENGTH TO THE CENTERLINE. GAPS BETWEEN MILL AND OVERLAY CANNOT BE LESS THAN 100'. FINAL LIMITS TO BE DETERMINED BY CONSTRUCTION ENGINEER.
  3. EXISTING STREET TREES SHALL BE PROTECTED. CONTRACTOR SHALL INSTALL TREE PROTECTION FENCING IN THE AREA BETWEEN THE CURB AND SIDEWALK AND EXTEND IT AT LEAST 5 FEET FROM BOTH SIDES OF THE TREE ALONG THE LENGTH OF THE TERRACE. NO EXCAVATION IS PERMITTED WITHIN 5 FEET OF THE OUTSIDE EDGE OF A TREE TRUNK. IF EXCAVATION WITHIN 5 FEET OF ANY TREE IS NECESSARY, CONTRACTOR SHALL CONTACT CITY FORESTRY (266-4816) PRIOR TO EXCAVATION TO ASSESS THE IMPACT OF THE TREE AND ROOT SYSTEM. TREE PRUNING SHALL BE COORDINATED WITH CITY FORESTRY, TREE PROTECTION SPECIFICATIONS CAN BE FOUND IN SECTION 107.13 OF CITY OF MADISON STANDARD SPECIFICATIONS FOR PUBLIC WORKS CONSTRUCTION.



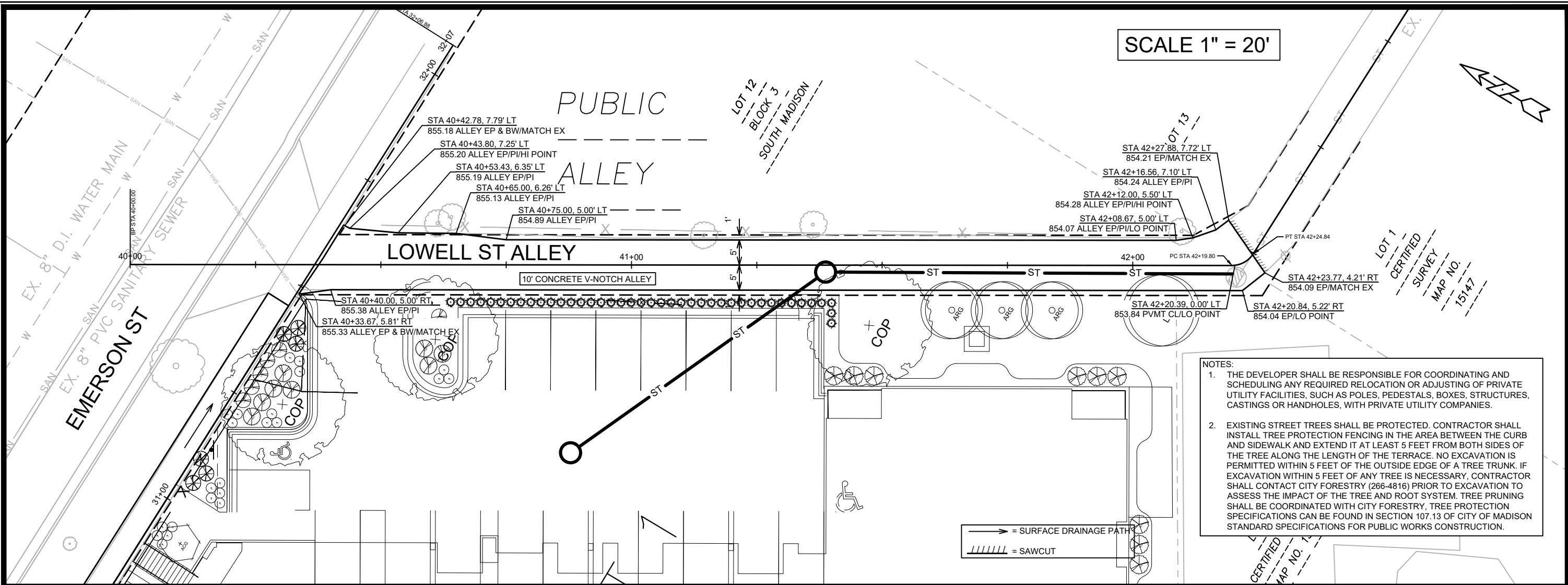
DATE	BY
REVISION	
MARK	
Designed By: AJC	Date: 10/3/2020 11:16 PM
Scale: 1" = 20'	
13044	P-2

13044  
MADISON, WI  
8926  
CONTRACT NO:

EMERSON ST SIDEWALK - PLAN & PROFILE  
1109-1123 S PARK STREET  
M:\DESIGN\Projects\13044\CAD\Streets\13044EN-PrP.dwg



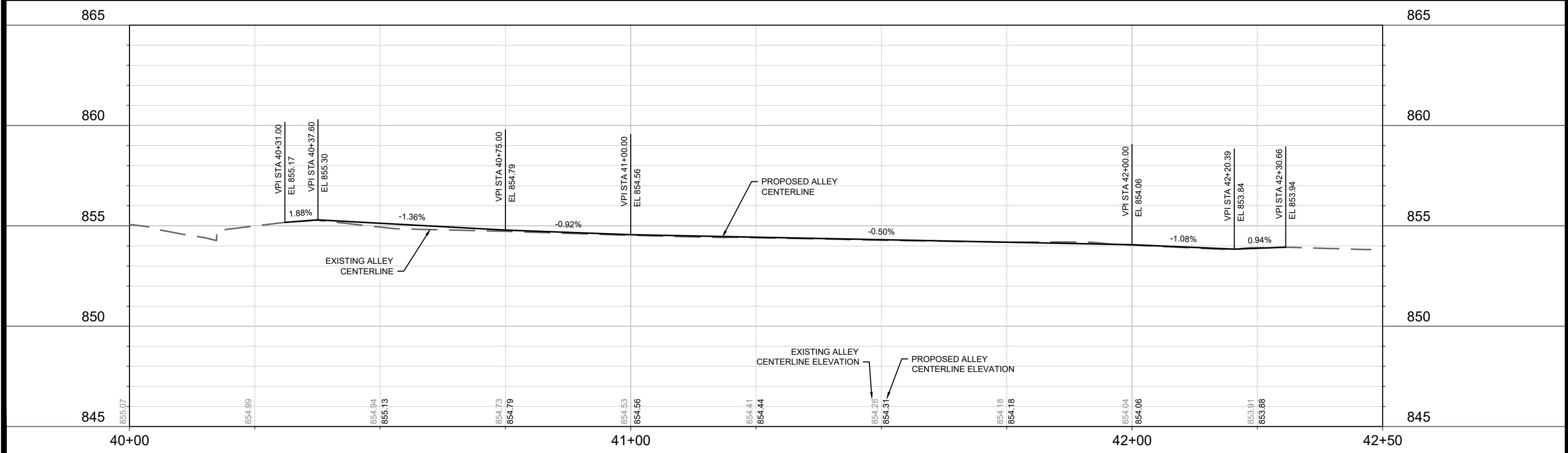
13044  
P-2



SCALE 1" = 20'

- NOTES:
1. THE DEVELOPER SHALL BE RESPONSIBLE FOR COORDINATING AND SCHEDULING ANY REQUIRED RELOCATION OR ADJUSTING OF PRIVATE UTILITY FACILITIES, SUCH AS POLES, PEDESTALS, BOXES, STRUCTURES, CASTINGS OR HANDHOLES, WITH PRIVATE UTILITY COMPANIES.
  2. EXISTING STREET TREES SHALL BE PROTECTED. CONTRACTOR SHALL INSTALL TREE PROTECTION FENCING IN THE AREA BETWEEN THE CURB AND SIDEWALK AND EXTEND IT AT LEAST 5 FEET FROM BOTH SIDES OF THE TREE ALONG THE LENGTH OF THE TERRACE. NO EXCAVATION IS PERMITTED WITHIN 5 FEET OF THE OUTSIDE EDGE OF A TREE TRUNK. IF EXCAVATION WITHIN 5 FEET OF ANY TREE IS NECESSARY, CONTRACTOR SHALL CONTACT CITY FORESTRY (266-4816) PRIOR TO EXCAVATION TO ASSESS THE IMPACT OF THE TREE AND ROOT SYSTEM. TREE PRUNING SHALL BE COORDINATED WITH CITY FORESTRY, TREE PROTECTION SPECIFICATIONS CAN BE FOUND IN SECTION 107.13 OF CITY OF MADISON STANDARD SPECIFICATIONS FOR PUBLIC WORKS CONSTRUCTION.

→ = SURFACE DRAINAGE PATH  
 // = SAWCUT



REVISION	DATE	BY

13044  
 MADISON, WI  
 CONTRACT NO: 8926

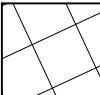
LOWELL ST ALLEY - PLAN & PROFILE  
 1109-1123 S PARK STREET  
 M:\DESIGN\Projects\13044\CAD\Streets\13044EN-PrP.dwg

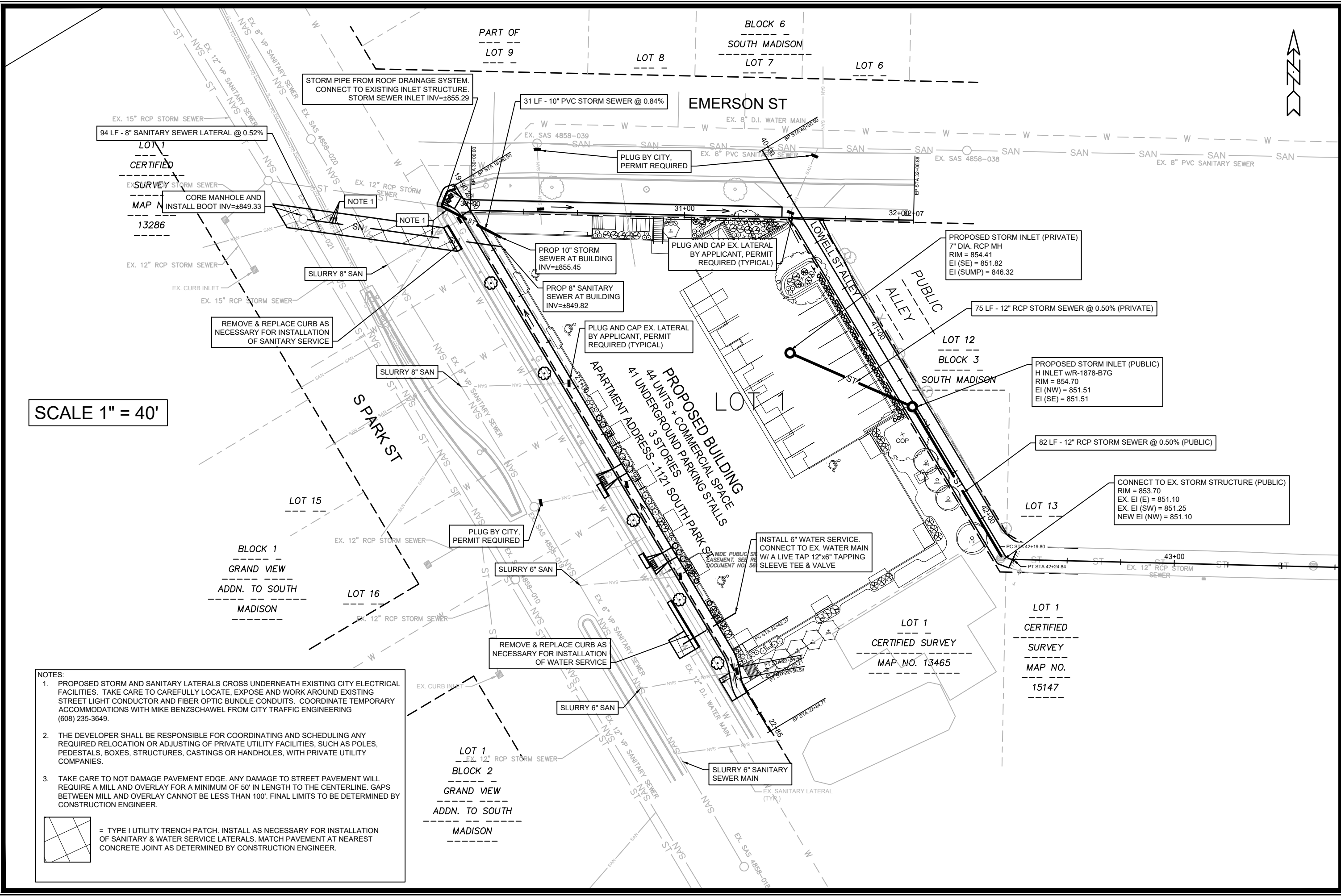


13044  
 P-3

SCALE 1" = 40'



- NOTES:**
1. PROPOSED STORM AND SANITARY LATERALS CROSS UNDERNEATH EXISTING CITY ELECTRICAL FACILITIES. TAKE CARE TO CAREFULLY LOCATE, EXPOSE AND WORK AROUND EXISTING STREET LIGHT CONDUCTOR AND FIBER OPTIC BUNDLE CONDUITS. COORDINATE TEMPORARY ACCOMMODATIONS WITH MIKE BENZSCHAWEL FROM CITY TRAFFIC ENGINEERING (608) 235-3649.
  2. THE DEVELOPER SHALL BE RESPONSIBLE FOR COORDINATING AND SCHEDULING ANY REQUIRED RELOCATION OR ADJUSTING OF PRIVATE UTILITY FACILITIES, SUCH AS POLES, PEDESTALS, BOXES, STRUCTURES, CASTINGS OR HANDHOLES, WITH PRIVATE UTILITY COMPANIES.
  3. TAKE CARE TO NOT DAMAGE PAVEMENT EDGE. ANY DAMAGE TO STREET PAVEMENT WILL REQUIRE A MILL AND OVERLAY FOR A MINIMUM OF 50' IN LENGTH TO THE CENTERLINE. GAPS BETWEEN MILL AND OVERLAY CANNOT BE LESS THAN 100'. FINAL LIMITS TO BE DETERMINED BY CONSTRUCTION ENGINEER.
-  = TYPE I UTILITY TRENCH PATCH. INSTALL AS NECESSARY FOR INSTALLATION OF SANITARY & WATER SERVICE LATERALS. MATCH PAVEMENT AT NEAREST CONCRETE JOINT AS DETERMINED BY CONSTRUCTION ENGINEER.




DATE	BY
REVISION	BY
MARK	BY
Designed By: AUC	Date: 10/5/2020 8:14 AM
Scale: #####	
13044	U-1

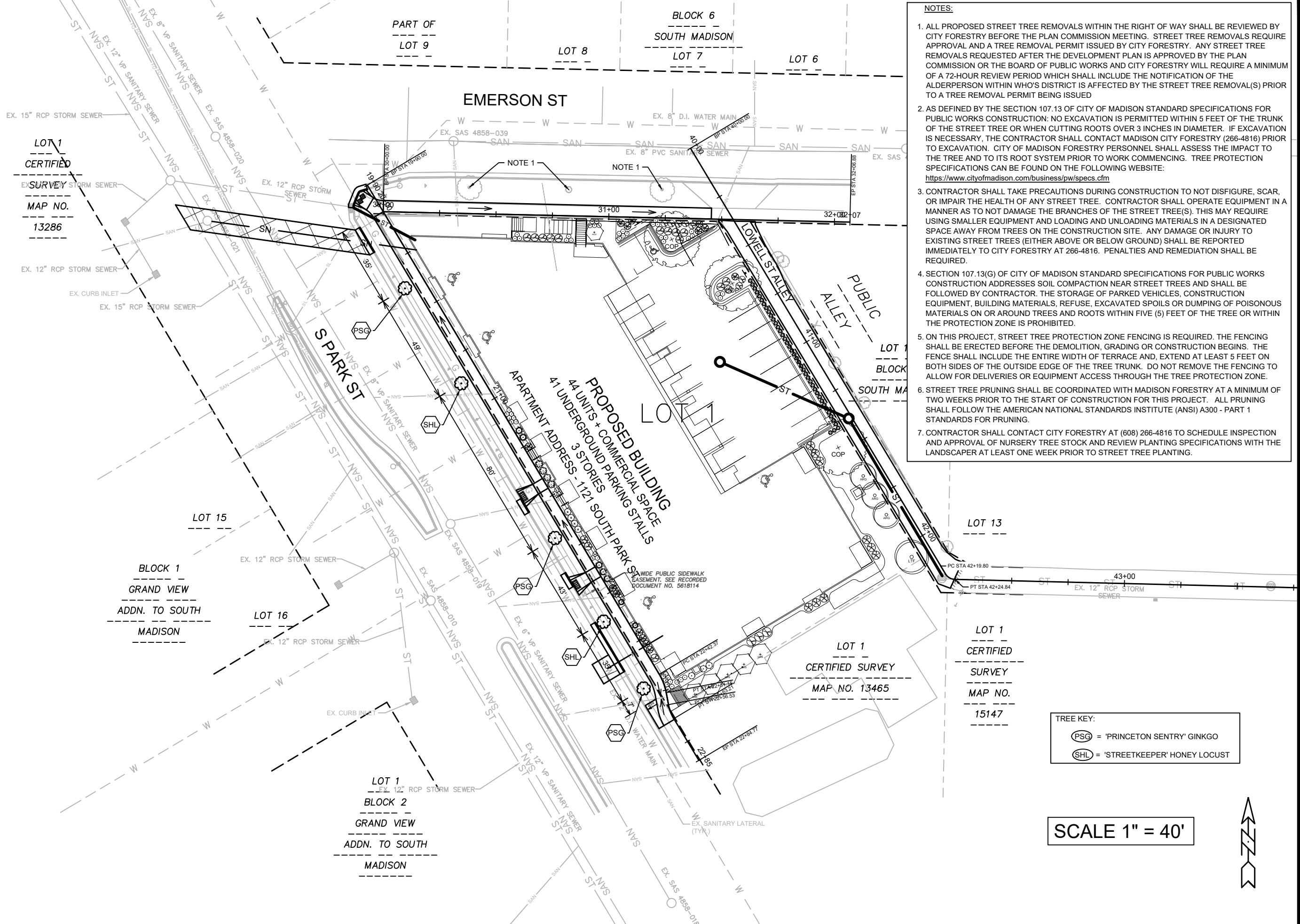
13044  
MADISON, WI  
8926

UTILITY PLAN  
1109-1123 S PARK STREET  
M:\DESIGN\Projects\13044\CAD\Streets\13044-EN-PnP.dwg

CONTRACT NO.: 13044



13044  
U-1



- NOTES:**
1. ALL PROPOSED STREET TREE REMOVALS WITHIN THE RIGHT OF WAY SHALL BE REVIEWED BY CITY FORESTRY BEFORE THE PLAN COMMISSION MEETING. STREET TREE REMOVALS REQUIRE APPROVAL AND A TREE REMOVAL PERMIT ISSUED BY CITY FORESTRY. ANY STREET TREE REMOVALS REQUESTED AFTER THE DEVELOPMENT PLAN IS APPROVED BY THE PLAN COMMISSION OR THE BOARD OF PUBLIC WORKS AND CITY FORESTRY WILL REQUIRE A MINIMUM OF A 72-HOUR REVIEW PERIOD WHICH SHALL INCLUDE THE NOTIFICATION OF THE ALDERPERSON WITHIN WHO'S DISTRICT IS AFFECTED BY THE STREET TREE REMOVAL(S) PRIOR TO A TREE REMOVAL PERMIT BEING ISSUED
  2. AS DEFINED BY THE SECTION 107.13 OF CITY OF MADISON STANDARD SPECIFICATIONS FOR PUBLIC WORKS CONSTRUCTION: NO EXCAVATION IS PERMITTED WITHIN 5 FEET OF THE TRUNK OF THE STREET TREE OR WHEN CUTTING ROOTS OVER 3 INCHES IN DIAMETER. IF EXCAVATION IS NECESSARY, THE CONTRACTOR SHALL CONTACT MADISON CITY FORESTRY (266-4816) PRIOR TO EXCAVATION. CITY OF MADISON FORESTRY PERSONNEL SHALL ASSESS THE IMPACT TO THE TREE AND TO ITS ROOT SYSTEM PRIOR TO WORK COMMENCING. TREE PROTECTION SPECIFICATIONS CAN BE FOUND ON THE FOLLOWING WEBSITE: <https://www.cityofmadison.com/business/pw/specs.cfm>
  3. CONTRACTOR SHALL TAKE PRECAUTIONS DURING CONSTRUCTION TO NOT DISFIGURE, SCAR, OR IMPAIR THE HEALTH OF ANY STREET TREE. CONTRACTOR SHALL OPERATE EQUIPMENT IN A MANNER AS TO NOT DAMAGE THE BRANCHES OF THE STREET TREE(S). THIS MAY REQUIRE USING SMALLER EQUIPMENT AND LOADING AND UNLOADING MATERIALS IN A DESIGNATED SPACE AWAY FROM TREES ON THE CONSTRUCTION SITE. ANY DAMAGE OR INJURY TO EXISTING STREET TREES (EITHER ABOVE OR BELOW GROUND) SHALL BE REPORTED IMMEDIATELY TO CITY FORESTRY AT 266-4816. PENALTIES AND REMEDIATION SHALL BE REQUIRED.
  4. SECTION 107.13(G) OF CITY OF MADISON STANDARD SPECIFICATIONS FOR PUBLIC WORKS CONSTRUCTION ADDRESSES SOIL COMPACTION NEAR STREET TREES AND SHALL BE FOLLOWED BY CONTRACTOR. THE STORAGE OF PARKED VEHICLES, CONSTRUCTION EQUIPMENT, BUILDING MATERIALS, REFUSE, EXCAVATED SPOILS OR DUMPING OF POISONOUS MATERIALS ON OR AROUND TREES AND ROOTS WITHIN FIVE (5) FEET OF THE TREE OR WITHIN THE PROTECTION ZONE IS PROHIBITED.
  5. ON THIS PROJECT, STREET TREE PROTECTION ZONE FENCING IS REQUIRED. THE FENCING SHALL BE ERECTED BEFORE THE DEMOLITION, GRADING OR CONSTRUCTION BEGINS. THE FENCE SHALL INCLUDE THE ENTIRE WIDTH OF TERRACE AND, EXTEND AT LEAST 5 FEET ON BOTH SIDES OF THE OUTSIDE EDGE OF THE TREE TRUNK. DO NOT REMOVE THE FENCING TO ALLOW FOR DELIVERIES OR EQUIPMENT ACCESS THROUGH THE TREE PROTECTION ZONE.
  6. STREET TREE PRUNING SHALL BE COORDINATED WITH MADISON FORESTRY AT A MINIMUM OF TWO WEEKS PRIOR TO THE START OF CONSTRUCTION FOR THIS PROJECT. ALL PRUNING SHALL FOLLOW THE AMERICAN NATIONAL STANDARDS INSTITUTE (ANSI) A300 - PART 1 STANDARDS FOR PRUNING.
  7. CONTRACTOR SHALL CONTACT CITY FORESTRY AT (608) 266-4816 TO SCHEDULE INSPECTION AND APPROVAL OF NURSERY TREE STOCK AND REVIEW PLANTING SPECIFICATIONS WITH THE LANDSCAPER AT LEAST ONE WEEK PRIOR TO STREET TREE PLANTING.

**TREE KEY:**

(PSG) = 'PRINCETON SENTRY' GINKGO

(SHL) = 'STREETKEEPER' HONEY LOCUST

**SCALE 1" = 40'**



MARK	REVISION	DATE	BY

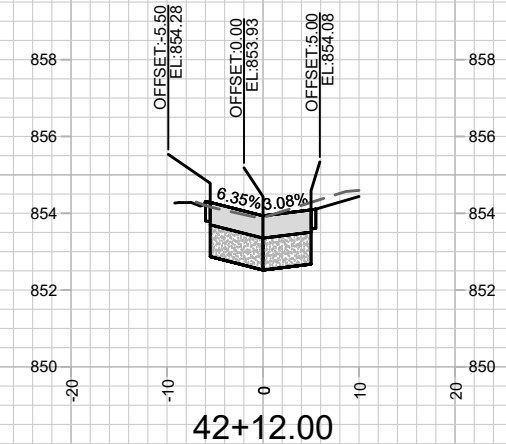
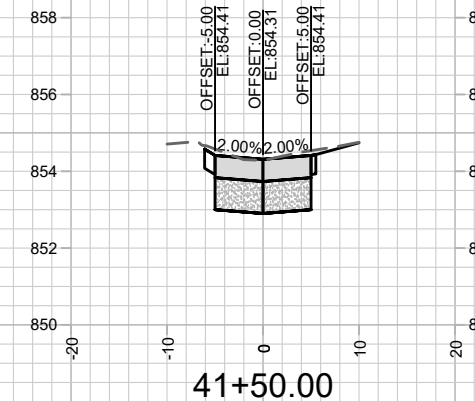
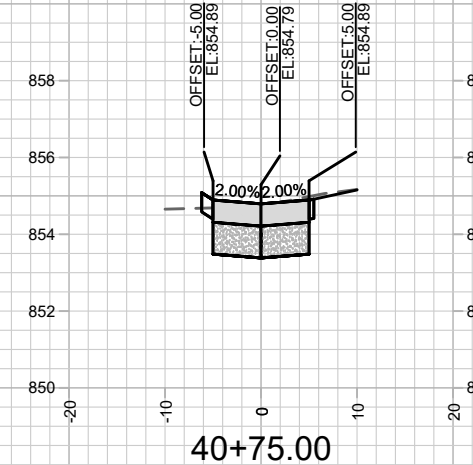
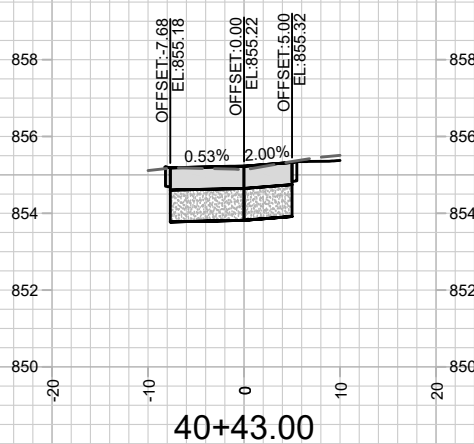
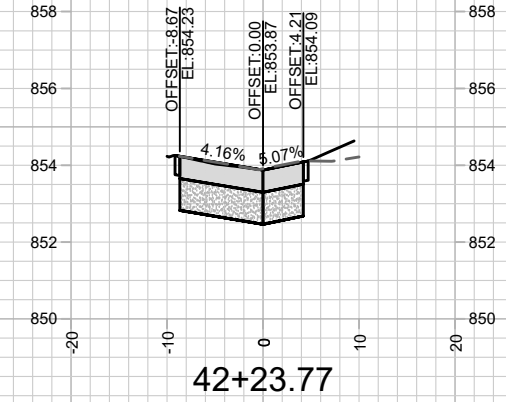
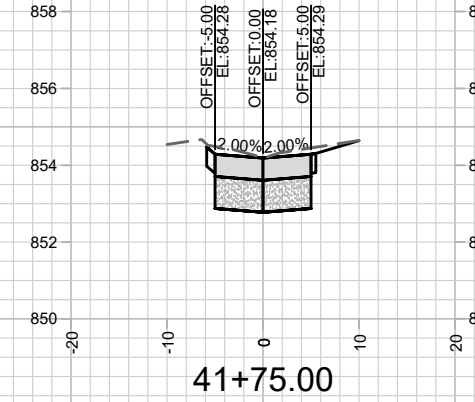
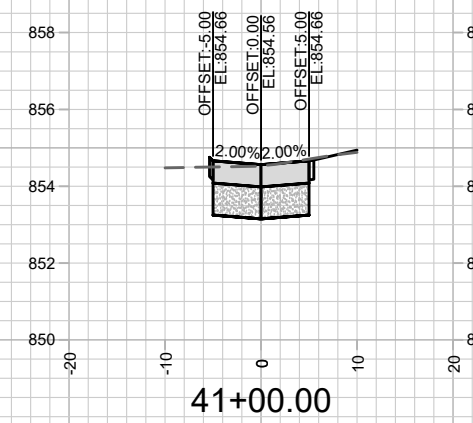
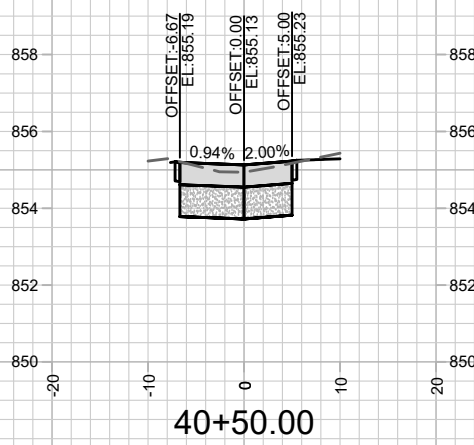
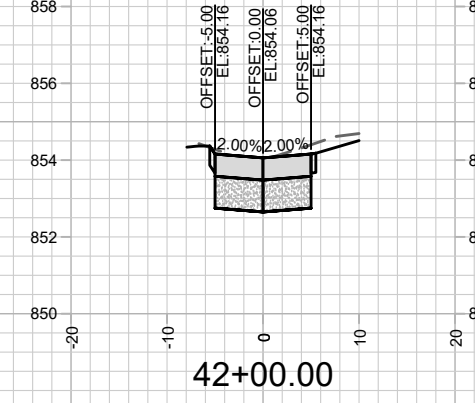
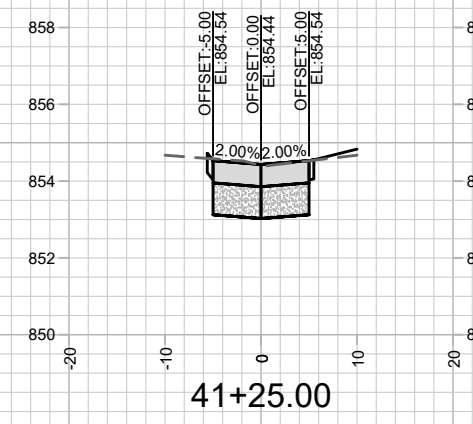
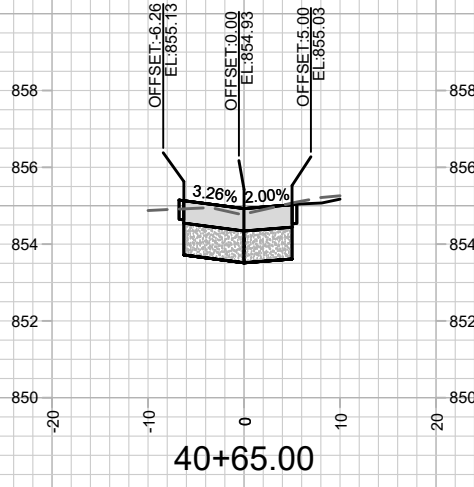
13044  
MADISON, WI  
8926  
CONTRACT NO:

LANDSCAPING PLAN  
1109-1123 S PARK STREET  
M:\DESIGN\Projects\13044\CAD\Streets\13044EN-PnP.dwg



13044  
L-1





MARK	REVISION	DATE	BY

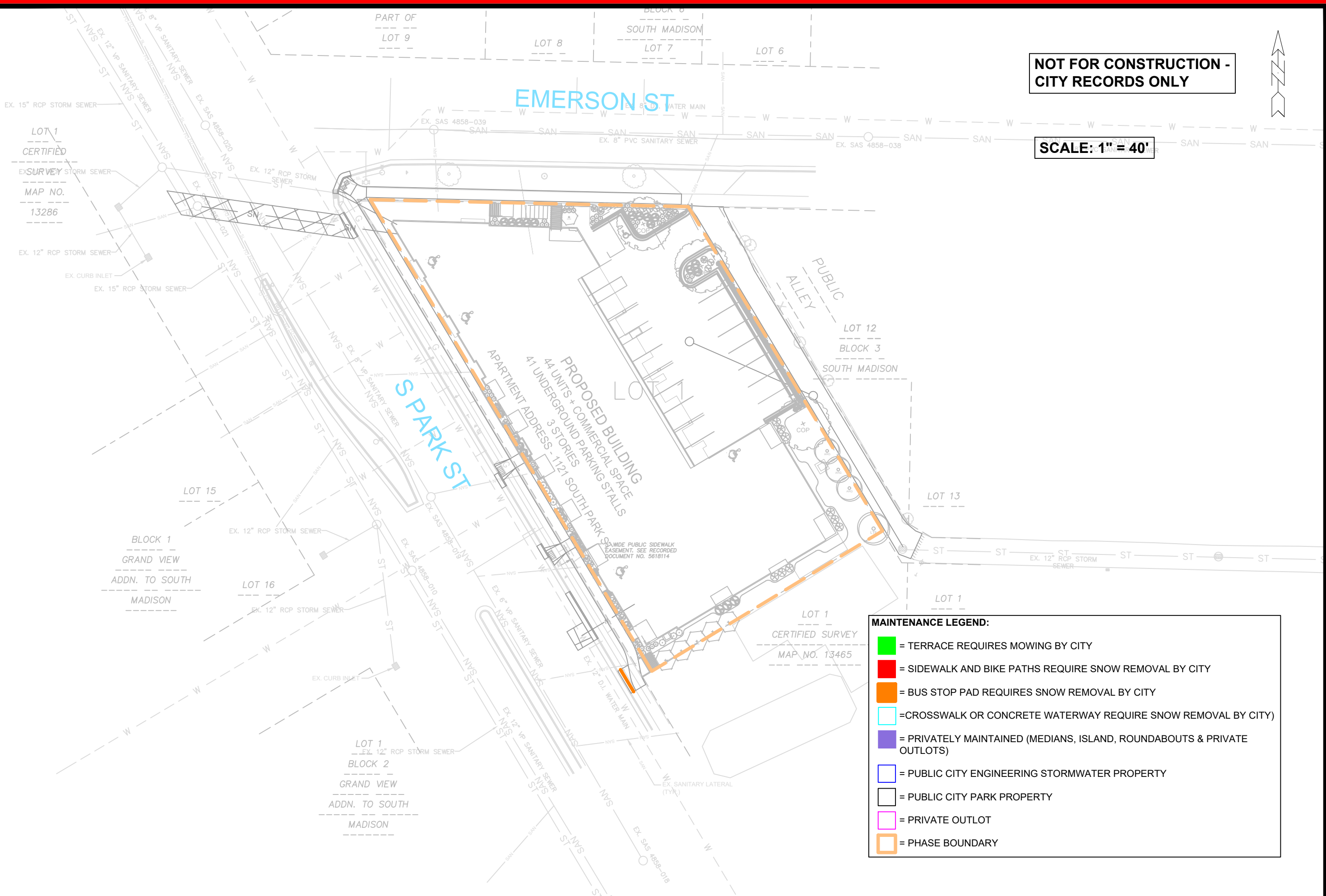
13044  
MADISON, WI  
8926  
CONTRACT NO:

LOWELL ST ALLEY - CROSS SECTIONS  
1109-1123 S PARK STREET  
M:\DESIGN\Projects\13044\CAD\Streets\13044EN-AllProf&Corridor\_Setup.dwg



13044  
X-1

Designed By: AJC Date: 10/3/2020 1:16 PM Scale: 1" = 20'  
13044 X-1



**NOT FOR CONSTRUCTION -  
CITY RECORDS ONLY**

**SCALE: 1" = 40'**

**MAINTENANCE LEGEND:**

- = TERRACE REQUIRES MOWING BY CITY
- = SIDEWALK AND BIKE PATHS REQUIRE SNOW REMOVAL BY CITY
- = BUS STOP PAD REQUIRES SNOW REMOVAL BY CITY
- = CROSSWALK OR CONCRETE WATERWAY REQUIRE SNOW REMOVAL BY CITY
- = PRIVATELY MAINTAINED (MEDIANS, ISLAND, ROUNDABOUTS & PRIVATE OUTLOTS)
- = PUBLIC CITY ENGINEERING STORMWATER PROPERTY
- = PUBLIC CITY PARK PROPERTY
- = PRIVATE OUTLOT
- = PHASE BOUNDARY

MARK	REVISION	DATE	BY

13044  
MADISON, WI  
8926  
CONTRACT NO:

1109-1123 S PARK STREET

M:\DESIGN\Projects\13044\CAD\Streets\13044EN-Maintenance.dwg



13044  
MN-1