

Madison, Wisconsin

CITY OF MADISON

CITY ENGINEERING DIVISION

DEPARTMENT OF PUBLIC WORKS

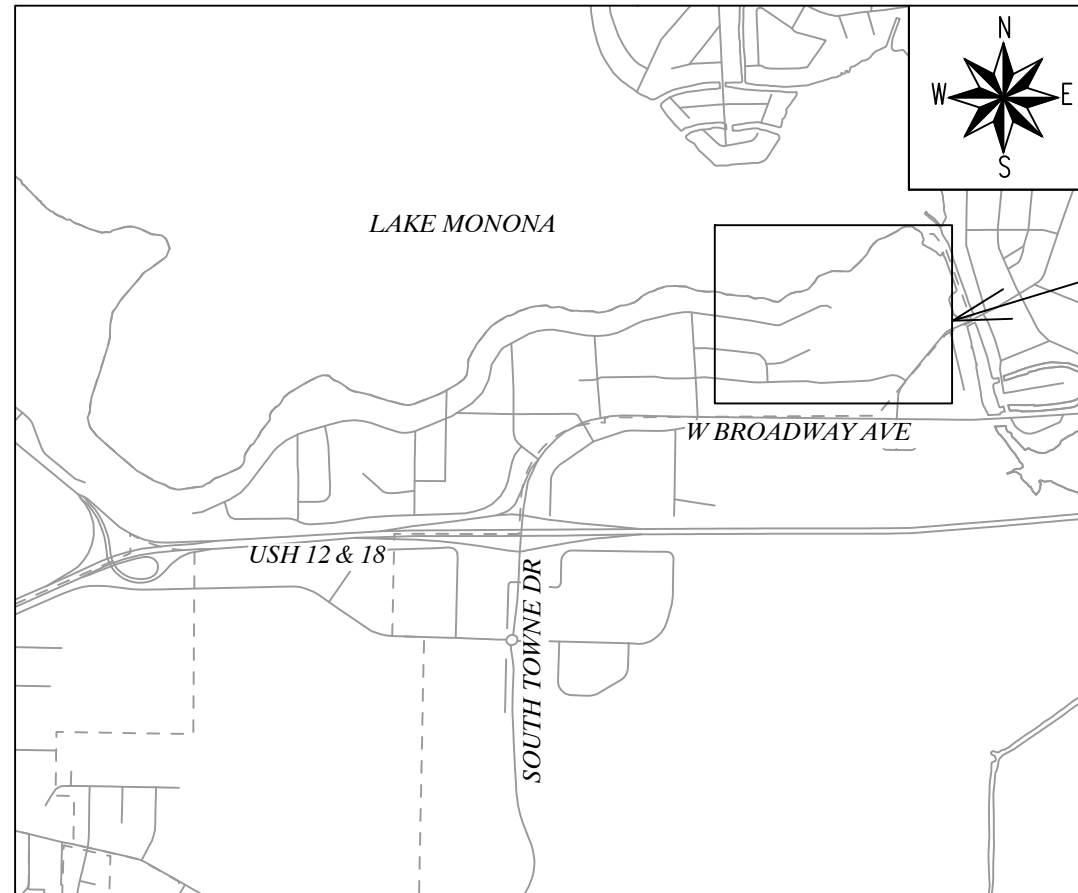
PLAN OF PROPOSED IMPROVEMENT

INDEX OF SHEETS

SHEET NO. 1	TITLE SHEET
SHEET NO. C5	PLAN & PROFILE

1502 W BROADWAY AVE

CITY PROJECT NO. 8927
CONTRACT NO. 13045



**PROJECT
LOCATION**

PUBLIC IMPROVEMENT PROJECT
APPROVED

APPROVED DATE

BY THE COMMON COUNCIL
OF MADISON, WISCONSIN

PUBLIC IMPROVEMENT DESIGN
APPROVED BY:

W- Greg Fries 9-11-2020
 City Engineer Date

SANITARY SEWER
DESIGNED BY:

**SEE INDIVIDUAL
SHEETS FOR P.E.
STAMP &
SIGNATURE**

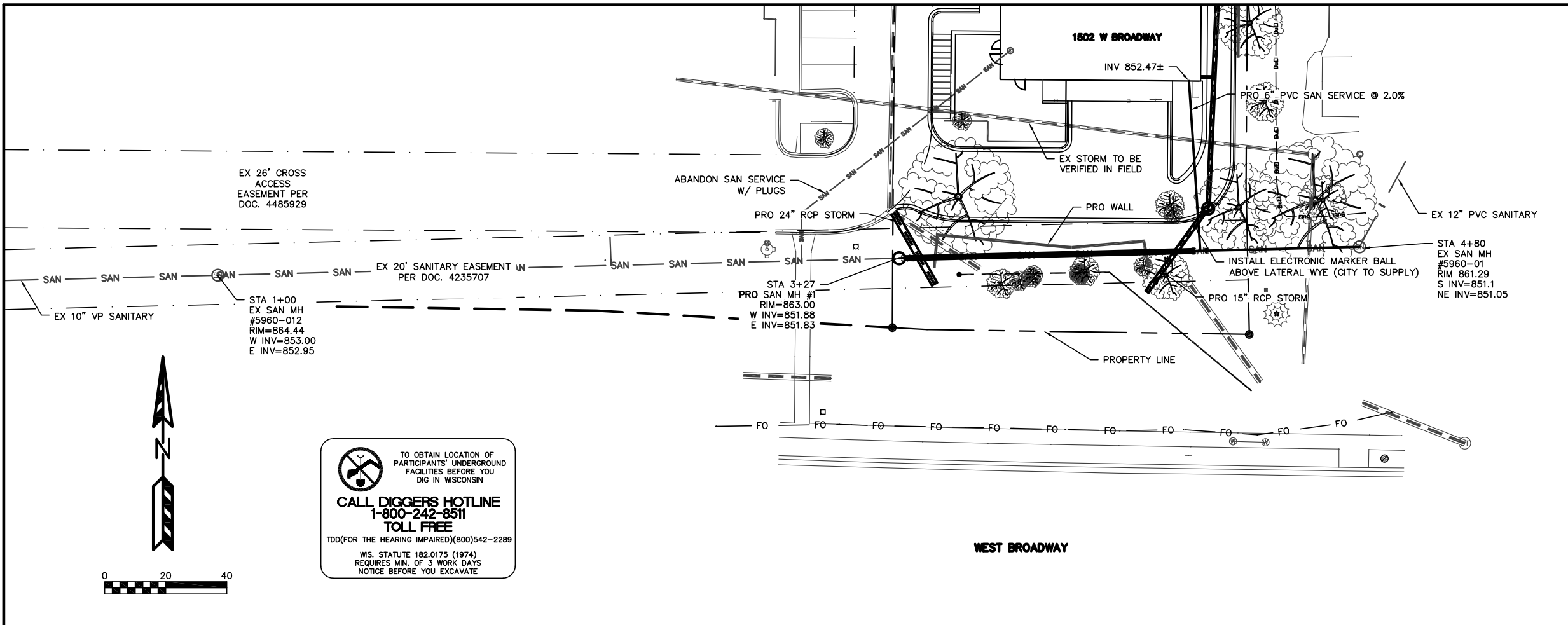
PLOT SCALE: 1:1_XREF

PLOT NAME: ---

REV. DATE: 9/10/2020 1:03 PM

ORIGINATOR: CITY_OF_MADISON

QUAM ENGINEERING, LLC 4604 Siggelkow Road, Suite A; McFarland, WI 53558 (608) 838-7750 JR13BASE.DWG



UTILITY NOTES:

ALL SANITARY SEWER CONSTRUCTION SHALL BE IN COMPLIANCE WITH THE CITY OF MADISON SEWER MAIN AND WISCONSIN DEPARTMENT OF COMMERCE STANDARDS.

PLUMBER SHALL VERIFY SANITARY SEWER LATERAL AND WATER SERVICE SIZE TO PROPOSED BUILDINGS

THE LENGTHS OF ALL UTILITIES ARE TO CENTER OF STRUCTURES OR FITTINGS AND MAY VARY SLIGHTLY FROM THE PLAN. LENGTHS SHALL BE VERIFIED IN THE FIELD DURING CONSTRUCTION.

MAINTAIN AN 8 FOOT MINIMUM HORIZONTAL SEPARATION DISTANCE BETWEEN PUBLIC SANITARY SEWER, WATER MAIN AND STORM SEWER. PROVIDE 18" MINIMUM VERTICAL SEPARATION WHERE SEWER CROSSES OVER WATER MAIN AND PROVIDE 6" MINIMUM VERTICAL SEPARATION WHERE WATER MAIN CROSSES OVER SEWER.

ANY UTILITIES WHICH ARE DAMAGED BY THE CONTRACTOR SHALL BE REPAIRED TO THE OWNER'S SATISFACTION AT THE CONTRACTOR'S EXPENSE.

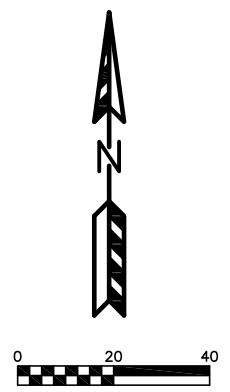
INSTALL ELECTRONIC MARKER BALL OVER THE SEWER MAIN/LATERAL CONNECTION AND AT PROPERTY LINE.

THE PROPOSED ELECTRIC, TELEPHONE AND GAS UTILITY LOCATIONS ARE NOT SHOWN. ACTUAL LOCATIONS AND DESIGN SHALL BE COMPLETED BY OTHERS.

ANY DAMAGE TO LAKE POINT DRIVE OR WEST BROADWAY PAVEMENT WILL REQUIRE PATCHING IN ACCORDANCE WITH THE CITY ENGINEERING STREET PATCHING CRITERIA.

THE CONTRACTOR SHALL VERIFY ALL EXISTING UTILITY LOCATIONS, SIZES, MATERIALS, AND ELEVATIONS PRIOR TO CONSTRUCTION.

SANITARY SEWER SHALL BE PVC ASTM D3034, SDR 35 UNLESS INDICATED OTHERWISE.

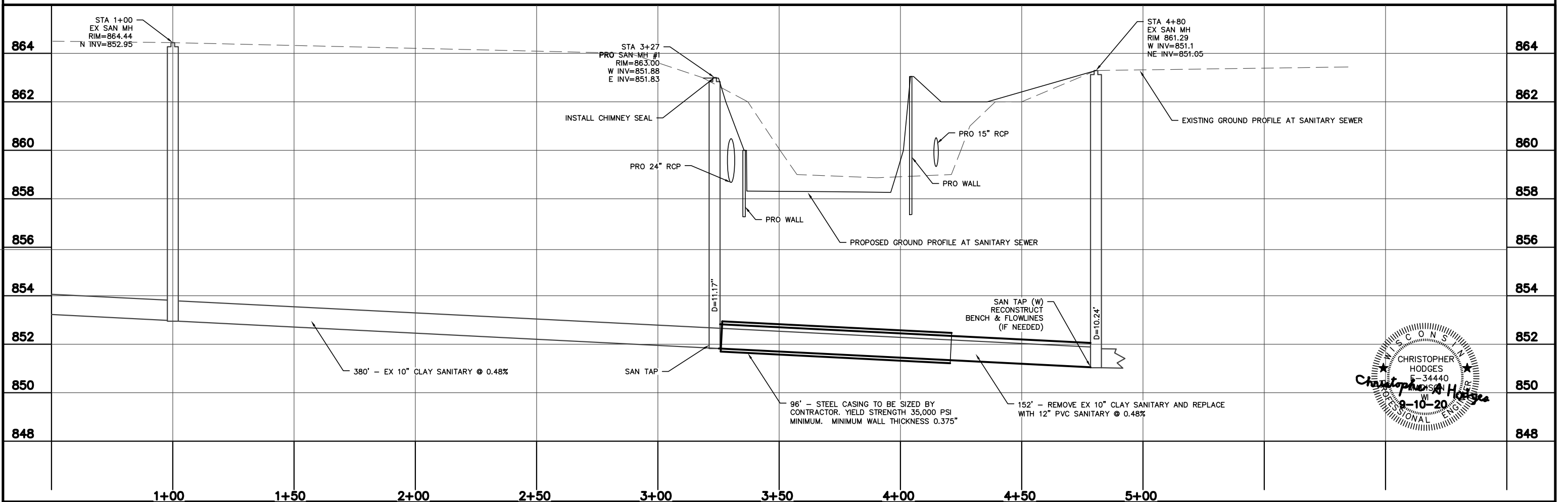


TO OBTAIN LOCATION OF PARTICIPANTS' UNDERGROUND FACILITIES BEFORE YOU DIG IN WISCONSIN

CALL DIGGERS HOTLINE
1-800-242-8511
TOLL FREE

TDD(FOR THE HEARING IMPAIRED)(800)542-2289

WIS. STATUTE 182.0175 (1974)
REQUIRES MIN. OF 3 WORK DAYS
NOTICE BEFORE YOU EXCAVATE



WISCONSIN PROFESSIONAL ENGINEER

CHRISTOPHER HODGES
F-34440
9-10-20