



Madison, Wisconsin

INDEX OF SHEETS

SHEET NO. D1-D3	NOTES AND DETAILS
SHEET NO. E1-E3	ELECTRICAL PLAN
SHEET NO. M-1	MARKING PLAN
SHEET NO. P1-P3	STREET PLAN & PROFILES
SHEET NO. U1-U4	UTILITY PLAN & PROFILES
SHEET NO. USTM	STORM SEWER SCHEDULE
SHEET NO. X1-X9	CROSS SECTIONS
SHEET NO. MN-1	MAINTENANCE PLAN

CITY OF MADISON

CITY ENGINEERING DIVISION

DEPARTMENT OF PUBLIC WORKS

PLAN OF PROPOSED IMPROVEMENT

603 SOUTH POINT ROAD - EDISON EXPANSION

CITY PROJECT NO. 13219
 CONTRACT NO. 8946

PUBLIC IMPROVEMENT PROJECT APPROVED

OCTOBER 20, 2020

BY THE COMMON COUNCIL OF MADISON, WISCONSIN

PUBLIC IMPROVEMENT DESIGN APPROVED BY:

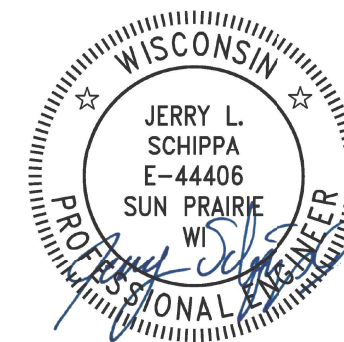
Greg Fries

Apr 17, 2021

City Engineer

Date

ELECTRICAL DESIGNED BY:



Apr 19, 2021

STREET GEOMETRICS & PAVEMENT MARKINGS DESIGNED BY:

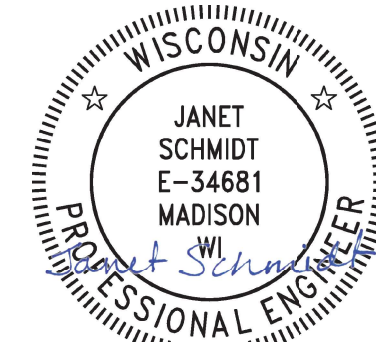


Apr 16, 2021

WATER DESIGNED BY:

LATERALS ONLY

STORM DESIGNED BY:

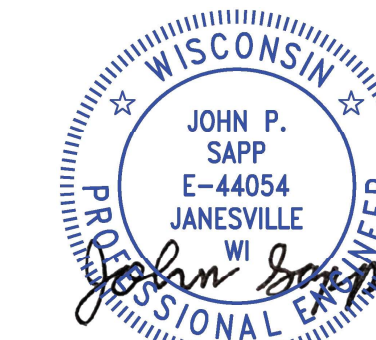


Apr 16, 2021

SANITARY DESIGNED BY:

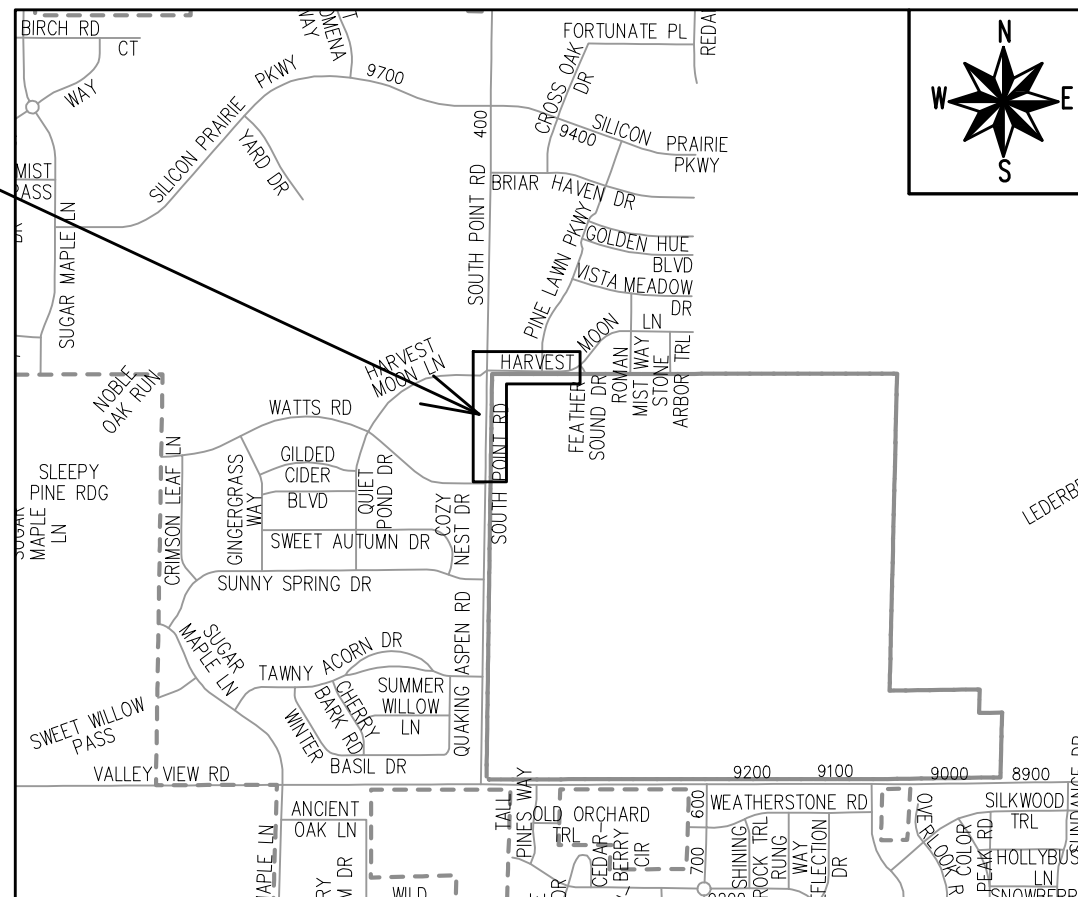
LATERALS ONLY

STREET GRADES DESIGNED BY:



Apr 16, 2021

PROJECT LOCATION



PLOT SCALE: 1:1_XREF

PLOT NAME: ---

REV. DATE: 4/9/2021 2:25 PM

ORIGINATOR: CITY_OF_MADISON



ALL PROPOSED STREET TREE REMOVALS WITHIN THE RIGHT OF WAY SHALL BE REVIEWED BY CITY FORESTRY BEFORE THE PLAN COMMISSION MEETING. STREET TREE REMOVALS REQUIRE APPROVAL AND A TREE REMOVAL PERMIT ISSUED BY CITY FORESTRY. ANY STREET TREE REMOVALS REQUESTED AFTER THE DEVELOPMENT PLAN IS APPROVED BY THE PLAN COMMISSION OR THE BOARD OF PUBLIC WORKS AND CITY FORESTRY WILL REQUIRE A MINIMUM OF A 72-HOUR REVIEW PERIOD WHICH SHALL INCLUDE THE NOTIFICATION OF THE ALDERPERSON WITHIN WHO'S DISTRICT IS AFFECTED BY THE STREET TREE REMOVAL(S) PRIOR TO A TREE REMOVAL PERMIT BEING ISSUED.

AS DEFINED BY THE SECTION 107.13 OF CITY OF MADISON STANDARD SPECIFICATIONS FOR PUBLIC WORKS CONSTRUCTION: NO EXCAVATION IS PERMITTED WITHIN 5 FEET OF THE TRUNK OF THE STREET TREE OR WHEN CUTTING ROOTS OVER 3 INCHES IN DIAMETER. IF EXCAVATION IS NECESSARY, THE CONTRACTOR SHALL CONTACT MADISON CITY FORESTRY (266-4816) PRIOR TO EXCAVATION. CITY OF MADISON FORESTRY PERSONNEL SHALL ASSESS THE IMPACT TO THE TREE AND TO ITS ROOT SYSTEM PRIOR TO WORK COMMENCING. TREE PROTECTION SPECIFICATIONS CAN BE FOUND ON THE FOLLOWING WEBSITE: [HTTPS://WWW.CITYOFMADISON.COM/BUSINESS/PW/SPECS.CFM](https://www.cityofmadison.com/business/pw/specs.cfm)

DEVELOPER MUST SUBMIT A TRAFFIC CONTROL PLAN TO CITY TRAFFIC ENGINEERING AT LEAST 14 DAYS PRIOR TO THE START OF WORK. WORK SHALL NOT PROCEED UNTIL AN APPROVED TRAFFIC CONTROL PLAN IS IN PLACE.

CONTACT PROJECT ENGINEER AND STREET DESIGNER AARON CANTON AT ACANTON@CITYOFMADISON.COM FOR CAD AND ALIGNMENT DATA PRIOR TO STAKING.

CONVENTIONAL SIGNS	
FIELD VERIFY ALL UTILITY LOCATIONS	
GAS	—— G ——
STORM SEWER	—— ST ——
SANITARY SEWER	—— SN ——
WATER	—— W ——
BURIED ELECTRIC	—— E ——
OVERHEAD ELECTRIC	—— OH ——
POWER POLE	
ADA COMPLIANT RAMP W/ DETECTABLE WARNING FIELD	
COMBUSTIBLE FLUIDS	

ALL PAVEMENT IN THE HARVEST MOON LANE RIGHT-OF-WAY SHALL BE TYPE B PAVEMENT PER STANDARD DETAIL DRAWING 4.02.

ALL PAVEMENT IN THE SOUTH POINT ROAD RIGHT-OF-WAY SHALL BE TYPE C PAVEMENT PER STANDARD DETAIL DRAWING 4.02.

UNDERDRAINS SHALL BE INSTALLED PER STANDARD DETAIL DRAWING 4.05 FOR 75' ON EACH SIDE OF THE LOW POINT, OR TO THE NEAREST CURB HIGH POINT. ALL UNDERDRAIN SHALL BE WRAPPED.

ALL GUTTERS SHALL DRAIN WITH A MINIMUM GRADE OF 0.5% TOWARD STORM SEWER INLETS.

ALL DITCHES SHALL DRAIN WITH A MINIMUM GRADE OF 0.5%

THE CROSS SLOPE OF SIDEWALKS AND BARRIER FREE SIDEWALK CURB RAMPS SHALL TYPICALLY BE 1.5%. THE LONGITUDINAL GRADE OF BARRIER FREE SIDEWALK CURB RAMPS SHALL NOT EXCEED 8.33%. ALL SIDEWALK RAMPS SHALL BE CONSTRUCTED ACCORDING TO S.D.D. 3.04. AT ALL OTHER LOCATIONS THE LONGITUDINAL GRADE OF SIDEWALKS SHALL NOT BE LESS THAN 0.5% AND SHALL DRAIN TOWARD STORM SEWER INLETS. ALL SIDEWALK AND SIDEWALK RAMP ELEVATIONS AND GRADES SHALL BE FIELD VERIFIED AND SET TO COMPLY WITH THE CITY OF MADISON STANDARD SPECIFICATIONS AND THE A.D.A. GUIDELINES.

CURB STATION AND OFFSETS SHALL BE TO THE EDGE OF PAVEMENT UNLESS OTHERWISE INDICATED. CURB ELEVATIONS SHALL BE TO THE EDGE OF PAVEMENT UNLESS OTHERWISE INDICATED.

POWER POLES AND OTHER OBSTRUCTIONS SHALL BE MOVED TO PROVIDE 2 FEET MINIMUM OF CLEAR DISTANCE FROM ANY FACE OF CURB OR EDGE OF SIDEWALK.

ANY INFORMATION SHOWN ON THIS PLAN, WHICH IS NOT PART OF THIS RIGHT-OF-WAY PROJECT, IS PRELIMINARY AND NOT FOR CONSTRUCTION.

THERE MAY BE EXISTING UTILITIES OR OTHER FEATURES WHICH ARE EITHER NOT SHOWN OR SHOWN INCORRECTLY ON THIS PLAN. IT IS THE RESPONSIBILITY OF THE DEVELOPER TO LOCATE AND IDENTIFY ALL UTILITIES AND TOPOGRAPHY WHICH MAY AFFECT THE CONSTRUCTION OF THESE IMPROVEMENTS.

ALL PERMANENT SIGNING AND POSTING WILL BE DETERMINED AND PROVIDED BY THE TRAFFIC ENGINEERING DIVISION, FOLLOWING CONSTRUCTION OF THESE IMPROVEMENTS.

THE DEVELOPER SHALL PROVIDE, INSTALL AND MAINTAIN ALL STREET END BARRICADES, SIGNING AND TRAFFIC CONTROL, AS REQUIRED BY THE CITY TRAFFIC ENGINEER.

PAVEMENT SAWCUTS SHALL BE AS DIRECTED BY THE CITY CONSTRUCTION ENGINEER. SAWCUTS SHOWN ON THE PLAN ARE APPROXIMATE.

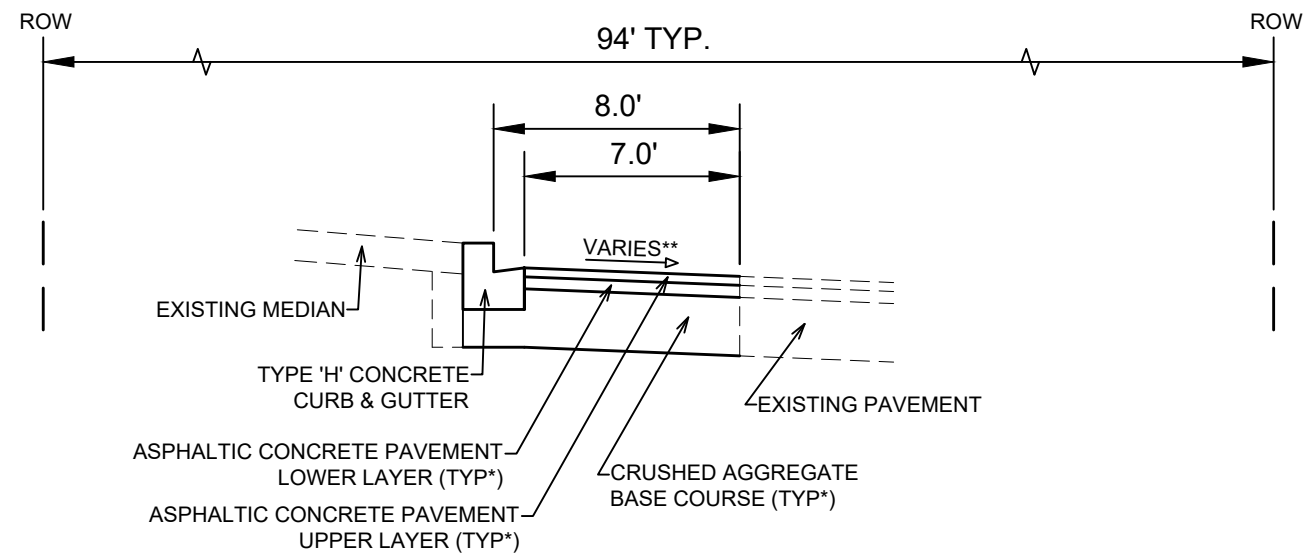
ALL WORK IN THE RIGHT OF WAY AND PUBLIC EASEMENTS SHALL BE IN ACCORDANCE WITH THE CITY OF MADISON STANDARD SPECIFICATIONS FOR PUBLIC WORKS CONSTRUCTION

MARK	REVISION	DATE	BY
13219		4/2/2021 7:35 AM	
Designed By: AUC		Scale: #####	D-1

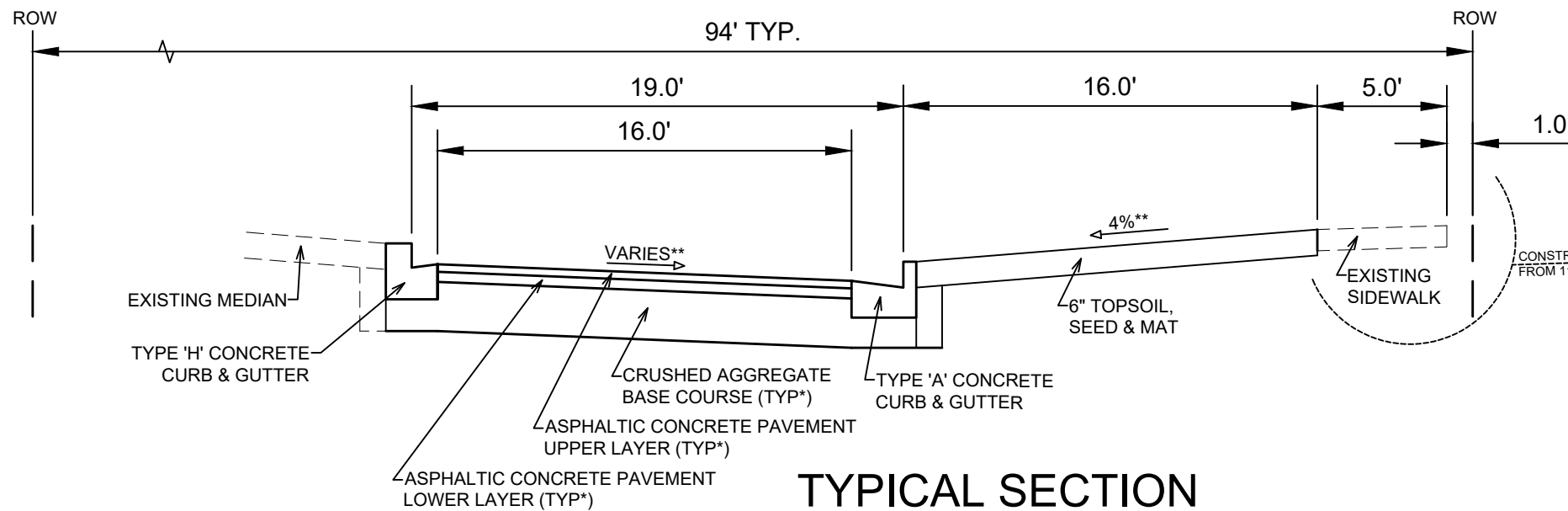
13219
MADISON, WI
8946
CONTRACT NO:
STANDARD NOTES
603 SOUTH POINT ROAD - EDISON EXPANSION
M:\DESIGN\Projects\13219\CAD\Streets\13219EN-Details.dwg



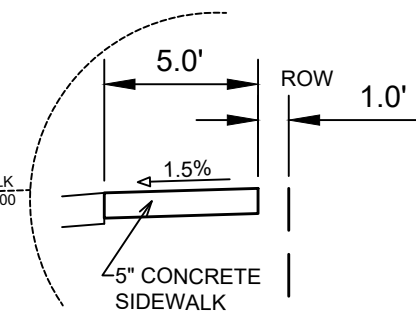
13219
D-1



TYPICAL SECTION
SOUTH POINT ROAD
STA 111+30 TO STA 111+98



TYPICAL SECTION
SOUTH POINT ROAD
STA 111+98 TO STA 114+00



TYPICAL SECTION
SOUTH POINT ROAD
STA 113+72 TO STA 114+00

NOTES:

* SOUTH POINT ROAD SHALL BE CONSTRUCTED AS TYPE 'C' PAVEMENT PER CITY OF MADISON MINIMUM PAVEMENT DESIGN †

** SEE PLAN AND CROSS SECTIONS FOR DETAILS AND DIMENSIONS

- THE CITY SHALL BE RESPONSIBLE FOR SURFACE PAVING HARVEST MOON LANE.
- THE DEVELOPER SHALL BE RESPONSIBLE FOR SURFACE PAVING SOUTH POINT ROAD.

CITY OF MADISON MINIMUM PAVEMENT DESIGN †

TYPE	CRUSHED AGGREGATE BASE COURSE		ASPHALTIC CONCRETE PAVEMENT			
	LOWER LAYER GRADATION 1	UPPER LAYER GRADATION 2	LOWER LAYER		UPPER LAYER	
			TYPE	THICKNESS	TYPE	THICKNESS
A	6"	6"	4 LT 58-28 S	1.75"	4 LT 58-28 S	1.75"
B	6"	6"	3 LT 58-28 S	2.50"	4 LT 58-28 S	2.00"
C	6"	6"	3 MT 58-28 S/H	3.50"	4 MT 58-28 S/H	2.00"



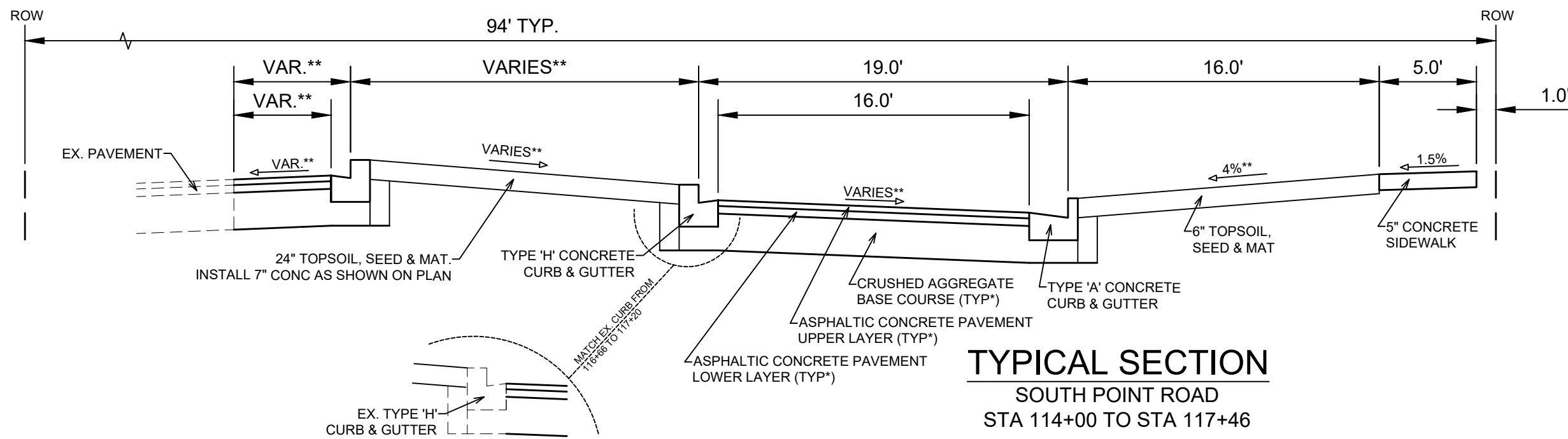
MARK	REVISION	DATE	BY
13219	4/19/2021 7:35 AM		
13219			D-2

13219
MADISON, WI
8946
CONTRACT NO:

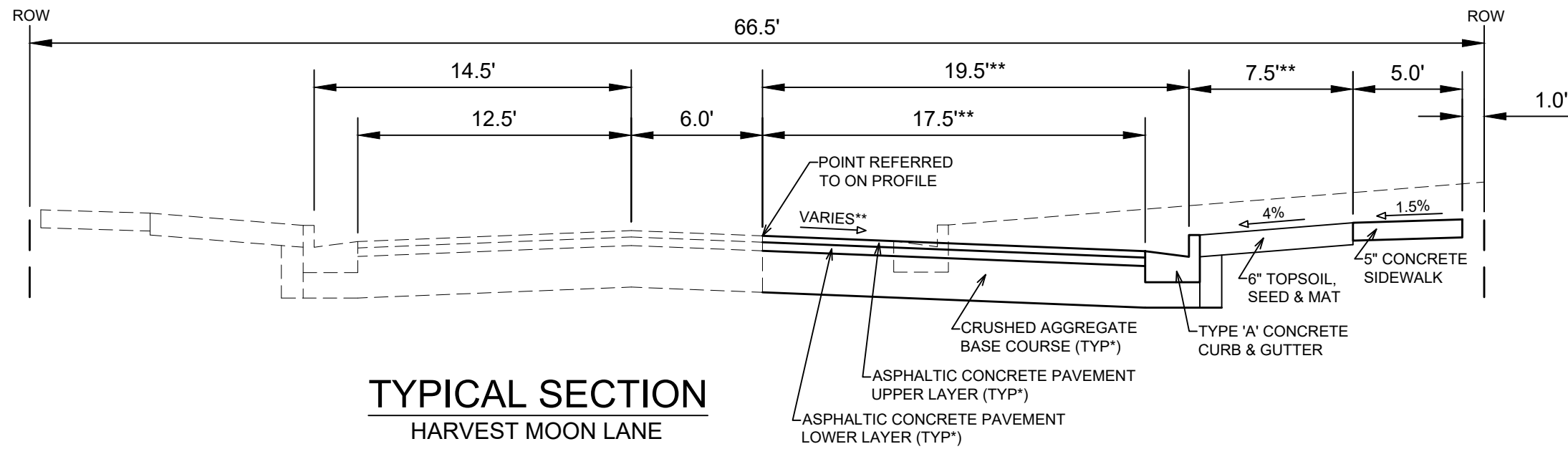
TYPICAL SECTIONS
603 SOUTH POINT ROAD - EDISON EXPANSION
M:\DESIGN\Projects\13219\CAD\Streets\13219EN-Details.dwg



13219
D-2



TYPICAL SECTION
SOUTH POINT ROAD
STA 116+66 TO STA 117+20



TYPICAL SECTION
HARVEST MOON LANE
(STA 10+50 TO STA 14+24)


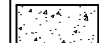
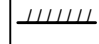
NOTES:

- * SOUTH POINT ROAD SHALL BE CONSTRUCTED AS TYPE 'C' PAVEMENT; HARVEST MOON LANE SHALL BE CONSTRUCTED AS TYPE 'B' PAVEMENT PER CITY OF MADISON MINIMUM PAVEMENT DESIGN †
- ** SEE PLAN AND CROSS SECTIONS FOR DETAILS AND DIMENSIONS
- THE CITY SHALL BE RESPONSIBLE FOR SURFACE PAVING HARVEST MOON LANE.
- THE DEVELOPER SHALL BE RESPONSIBLE FOR SURFACE PAVING SOUTH POINT ROAD.

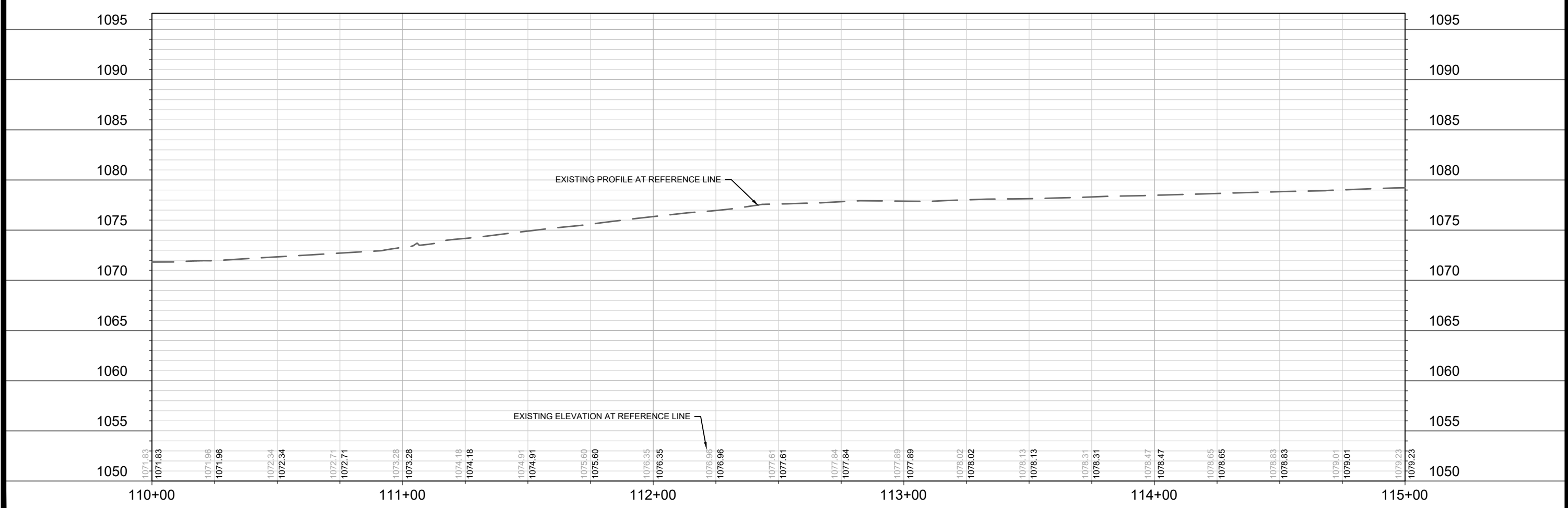
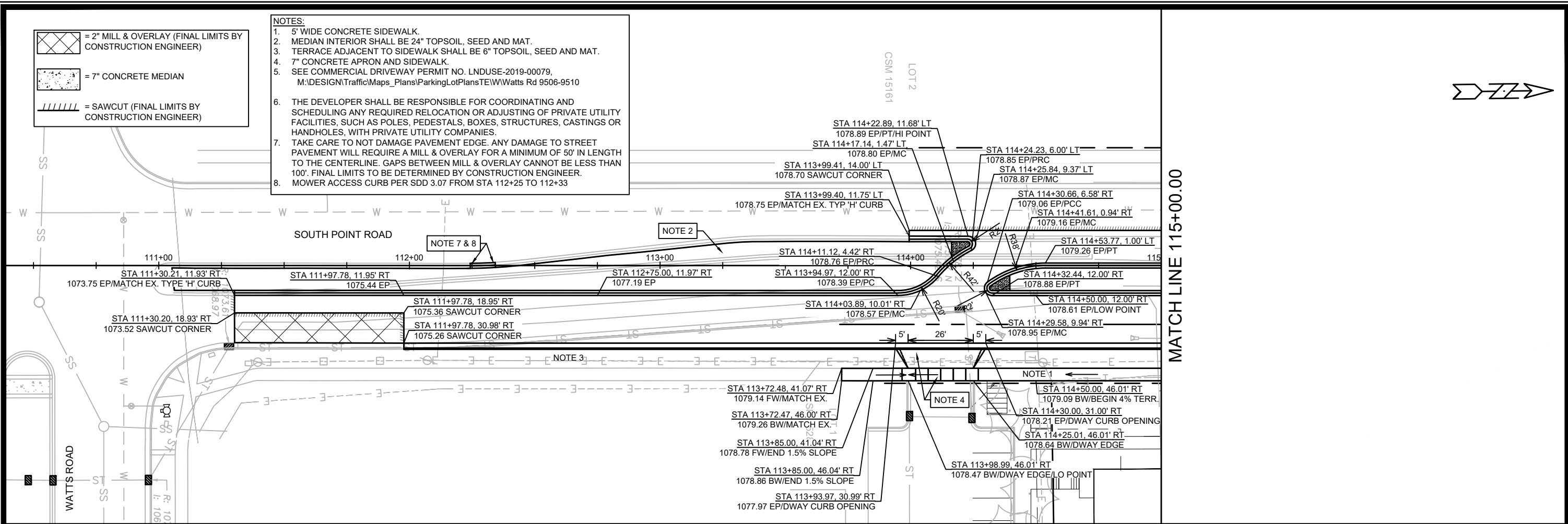
CITY OF MADISON MINIMUM PAVEMENT DESIGN †


TYPE	CRUSHED AGGREGATE BASE COURSE		ASPHALTIC CONCRETE PAVEMENT			
	LOWER LAYER GRADATION 1	UPPER LAYER GRADATION 2	LOWER LAYER		UPPER LAYER	
			TYPE	THICKNESS	TYPE	THICKNESS
A	6"	6"	4 LT 58-28 S	1.75"	4 LT 58-28 S	1.75"
B	6"	6"	3 LT 58-28 S	2.50"	4 LT 58-28 S	2.00"
C	6"	6"	3 MT 58-28 S/H	3.50"	4 MT 58-28 S/H	2.00"

13219	MADISON, WI	8946	CONTRACT NO:	13219	D-3
603 SOUTH POINT ROAD - EDISON EXPANSION					
M:\DESIGN\Projects\13219\CAD\Streets\13219EN-Details.dwg					
TYPICAL SECTIONS					
13219					
D-3					

-  = 2" MILL & OVERLAY (FINAL LIMITS BY CONSTRUCTION ENGINEER)
-  = 7" CONCRETE MEDIAN
-  = SAWCUT (FINAL LIMITS BY CONSTRUCTION ENGINEER)

- NOTES:**
1. 5' WIDE CONCRETE SIDEWALK.
 2. MEDIAN INTERIOR SHALL BE 24" TOPSOIL, SEED AND MAT.
 3. TERRACE ADJACENT TO SIDEWALK SHALL BE 6" TOPSOIL, SEED AND MAT.
 4. 7" CONCRETE APRON AND SIDEWALK.
 5. SEE COMMERCIAL DRIVEWAY PERMIT NO. LNDUSE-2019-00079, M:\DESIGN\Traffic\Maps_Plans\ParkingLotPlans\TE\Watts Rd 9506-9510
 6. THE DEVELOPER SHALL BE RESPONSIBLE FOR COORDINATING AND SCHEDULING ANY REQUIRED RELOCATION OR ADJUSTING OF PRIVATE UTILITY FACILITIES, SUCH AS POLES, PEDESTALS, BOXES, STRUCTURES, CASTINGS OR HANDHOLES, WITH PRIVATE UTILITY COMPANIES.
 7. TAKE CARE TO NOT DAMAGE PAVEMENT EDGE. ANY DAMAGE TO STREET PAVEMENT WILL REQUIRE A MILL & OVERLAY FOR A MINIMUM OF 50' IN LENGTH TO THE CENTERLINE. GAPS BETWEEN MILL & OVERLAY CANNOT BE LESS THAN 100'. FINAL LIMITS TO BE DETERMINED BY CONSTRUCTION ENGINEER.
 8. MOWER ACCESS CURB PER SDD 3.07 FROM STA 112+25 TO 112+33

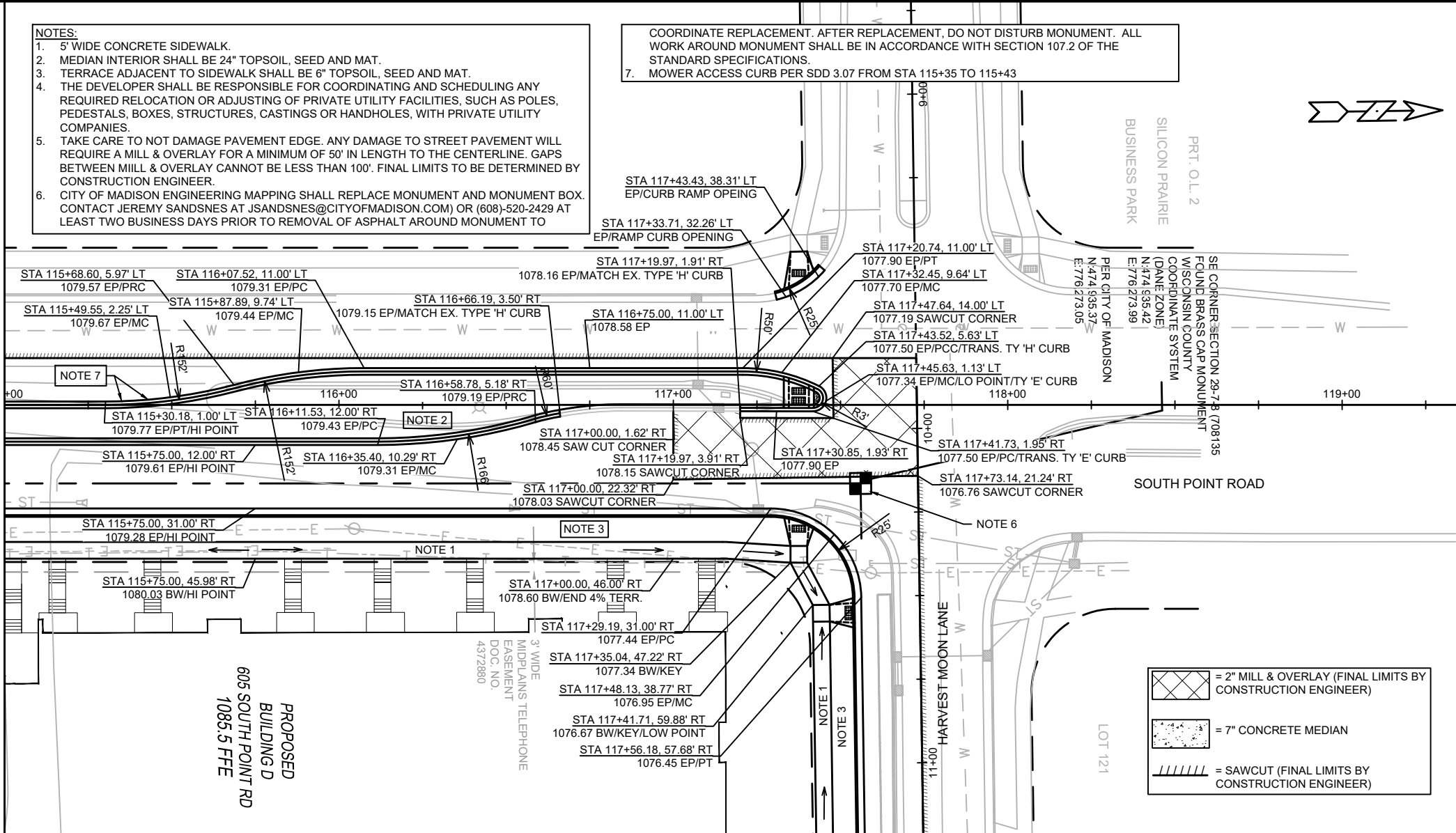


13219	MADISON, WI	8946	CONTRACT NO:
SOUTH POINT ROAD - PLAN & PROFILE			
603 SOUTH POINT ROAD - EDISON EXPANSION			
M:\DESIGN\Projects\13219\CAD\Streets\13219EN-PnP.dwg			
			
13219			
P-1			

NOTES:
 1. 5' WIDE CONCRETE SIDEWALK.
 2. MEDIAN INTERIOR SHALL BE 24" TOPSOIL, SEED AND MAT.
 3. TERRACE ADJACENT TO SIDEWALK SHALL BE 6" TOPSOIL, SEED AND MAT.
 4. THE DEVELOPER SHALL BE RESPONSIBLE FOR COORDINATING AND SCHEDULING ANY REQUIRED RELOCATION OR ADJUSTING OF PRIVATE UTILITY FACILITIES, SUCH AS POLES, PEDESTALS, BOXES, STRUCTURES, CASTINGS OR HANDHOLES, WITH PRIVATE UTILITY COMPANIES.
 5. TAKE CARE TO NOT DAMAGE PAVEMENT EDGE. ANY DAMAGE TO STREET PAVEMENT WILL REQUIRE A MILL & OVERLAY FOR A MINIMUM OF 50' IN LENGTH TO THE CENTERLINE. GAPS BETWEEN MILL & OVERLAY CANNOT BE LESS THAN 100'. FINAL LIMITS TO BE DETERMINED BY CONSTRUCTION ENGINEER.
 6. CITY OF MADISON ENGINEERING MAPPING SHALL REPLACE MONUMENT AND MONUMENT BOX. CONTACT JEREMY SANDSNES AT JSANDSNES@CITYOFMADISON.COM OR (608)-520-2429 AT LEAST TWO BUSINESS DAYS PRIOR TO REMOVAL OF ASPHALT AROUND MONUMENT TO

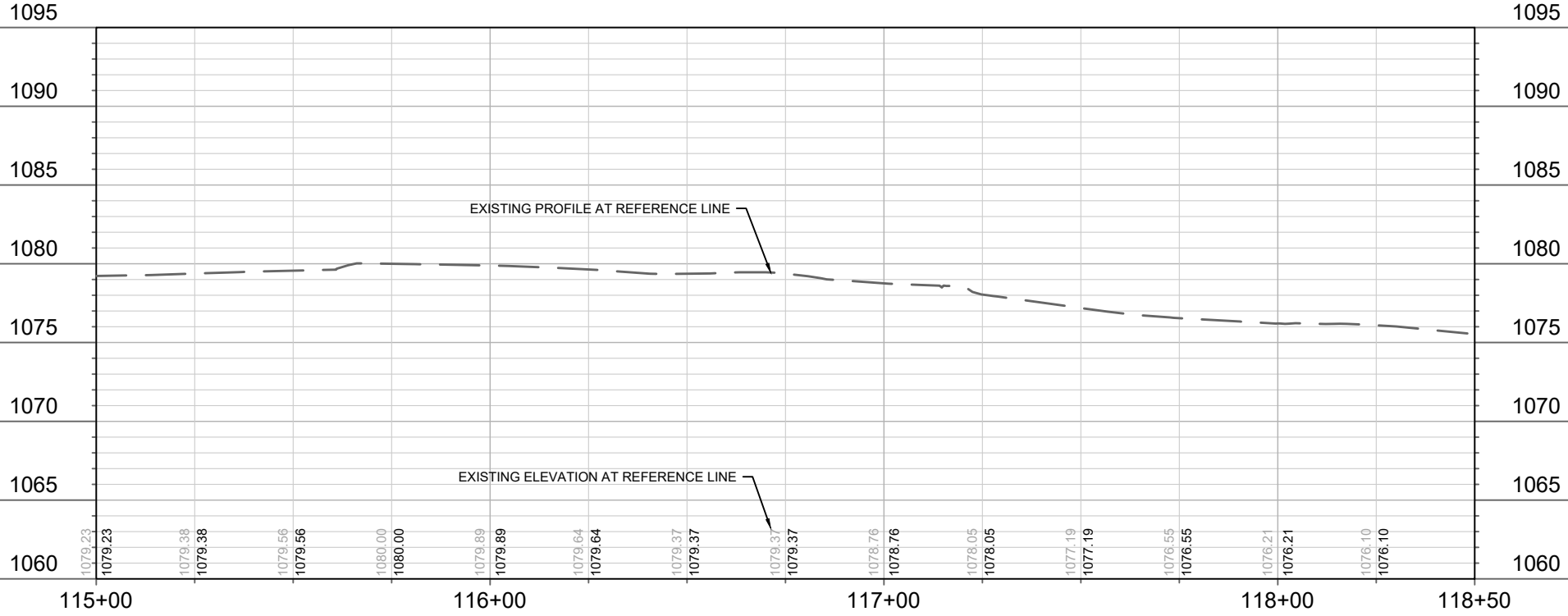
COORDINATE REPLACEMENT. AFTER REPLACEMENT, DO NOT DISTURB MONUMENT. ALL WORK AROUND MONUMENT SHALL BE IN ACCORDANCE WITH SECTION 107.2 OF THE STANDARD SPECIFICATIONS.
 7. MOWER ACCESS CURB PER SDD 3.07 FROM STA 115+35 TO 115+43

MATCH LINE 115+00.00



Legend for pavement and construction symbols:

- = 2" MILL & OVERLAY (FINAL LIMITS BY CONSTRUCTION ENGINEER)
- = 7" CONCRETE MEDIAN
- = SAWCUT (FINAL LIMITS BY CONSTRUCTION ENGINEER)



Project Information:

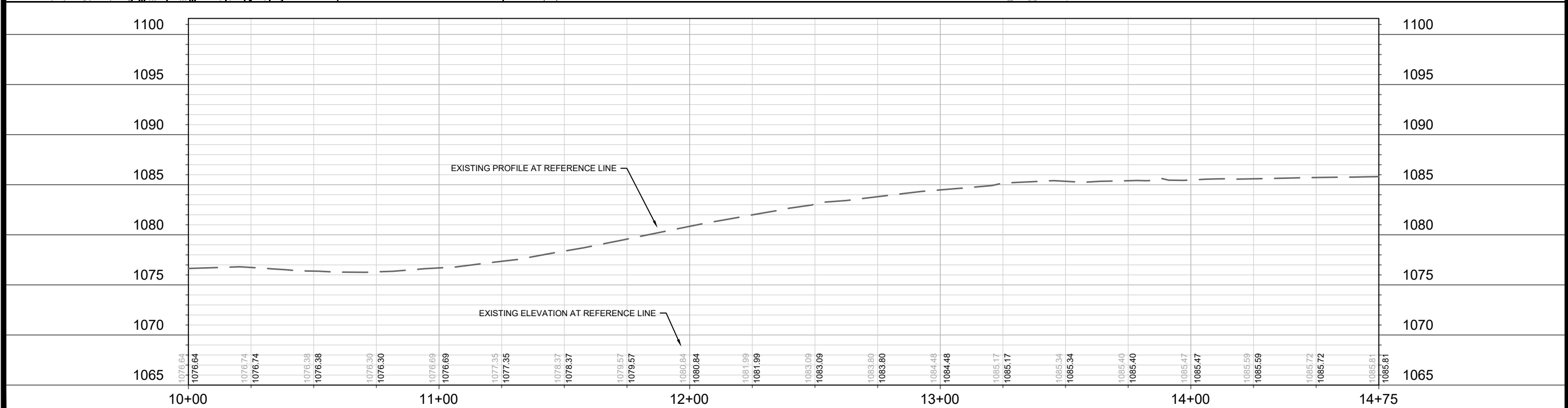
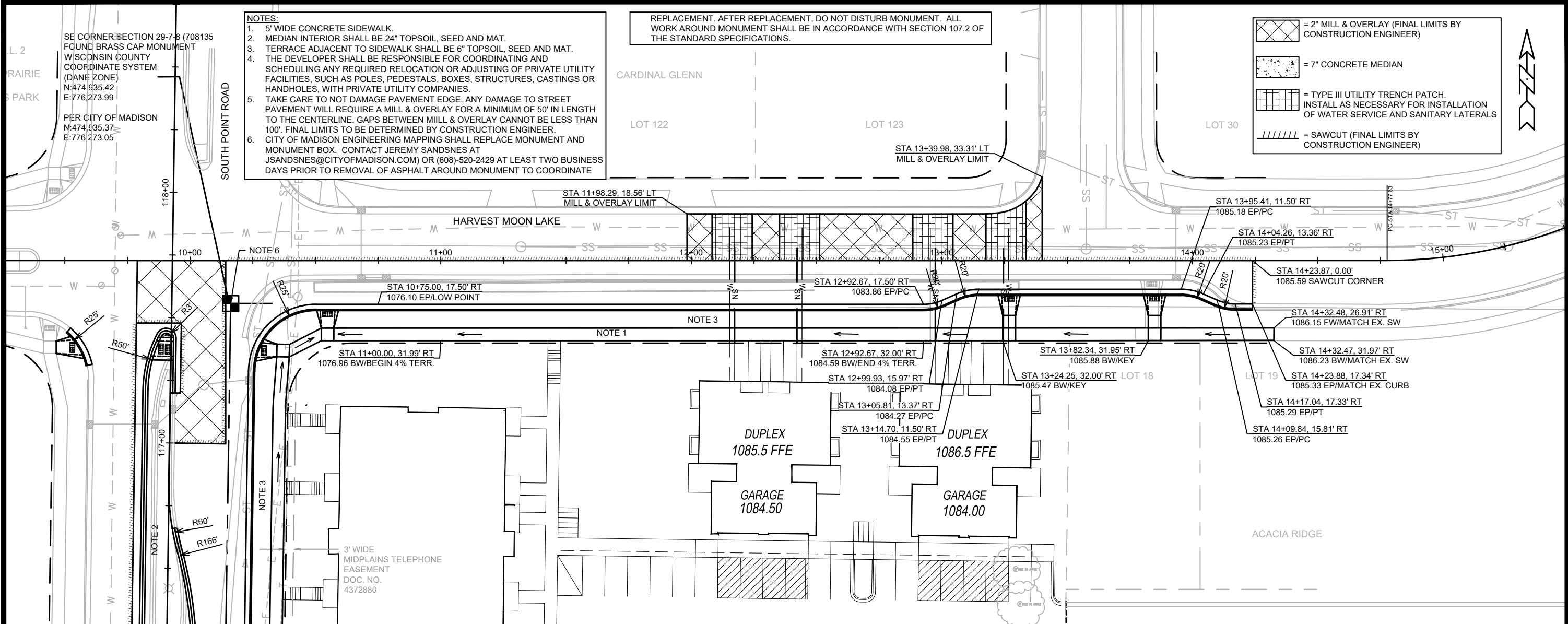
13219
MADISON, WI
8946
CONTRACT NO.:

SOUTH POINT ROAD - PLAN & PROFILE
603 SOUTH POINT ROAD - EDISON EXPANSION

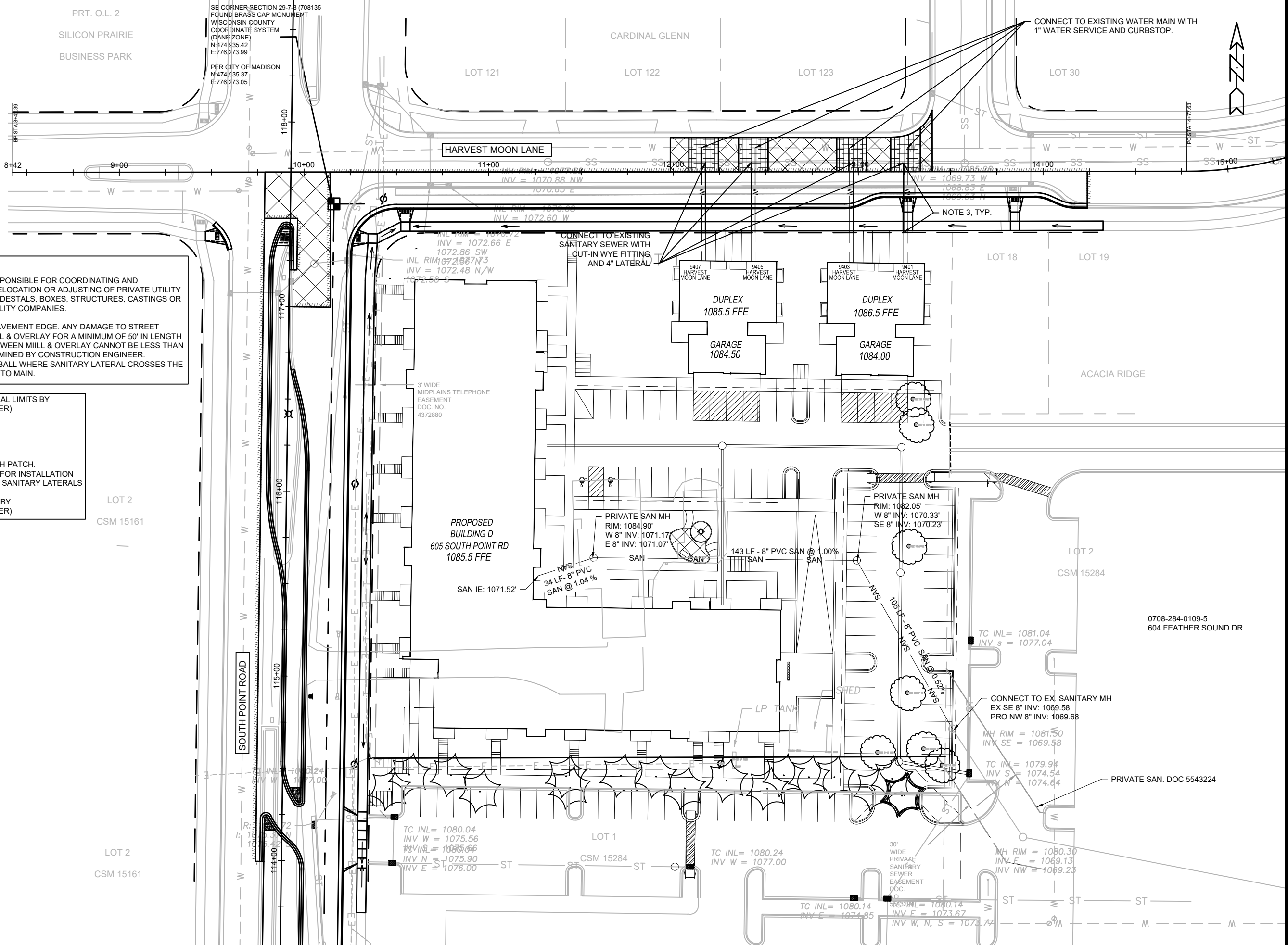
M:\DESIGN\Projects\13219\CAD\Streets\13219EN-PnP.dwg

13219
P-2

Scale: #/###/###
 Date: 4/16/2021 9:49 AM
 REVISION
 MARK
 BY
 DATE



DATE	BY	P-3
REVISION	Scale: #####	
MARK	Designed By: AJC	13219
13219 HARVEST MOON LANE - PLAN & PROFILE 603 SOUTH POINT ROAD - EDISON EXPANSION M:\DESIGN\Projects\13219\CAD\Streets\13219EN-PrP.dwg		
13219 MADISON, WI 8946 CONTRACT NO.:		



- NOTES:**
1. THE DEVELOPER SHALL BE RESPONSIBLE FOR COORDINATING AND SCHEDULING ANY REQUIRED RELOCATION OR ADJUSTING OF PRIVATE UTILITY FACILITIES, SUCH AS POLES, PEDESTALS, BOXES, STRUCTURES, CASTINGS OR HANDHOLES, WITH PRIVATE UTILITY COMPANIES.
 2. TAKE CARE TO NOT DAMAGE PAVEMENT EDGE. ANY DAMAGE TO STREET PAVEMENT WILL REQUIRE A MILL & OVERLAY FOR A MINIMUM OF 50' IN LENGTH TO THE CENTERLINE. GAPS BETWEEN MILL & OVERLAY CANNOT BE LESS THAN 100'. FINAL LIMITS TO BE DETERMINED BY CONSTRUCTION ENGINEER.
 3. INSTALL ELECTRONIC MARKER BALL WHERE SANITARY LATERAL CROSSES THE ROW AND AT THE CONNECTION TO MAIN.

- = 2" MILL & OVERLAY (FINAL LIMITS BY CONSTRUCTION ENGINEER)
- = 7" CONCRETE MEDIAN
- = TYPE III UTILITY TRENCH PATCH. INSTALL AS NECESSARY FOR INSTALLATION OF WATER SERVICE AND SANITARY LATERALS
- = SAWCUT (FINAL LIMITS BY CONSTRUCTION ENGINEER)

LOT 2
CSM 15161

LOT 2
CSM 15161

SE CORNER SECTION 29-7-8 (708135)
FOUND BRASS CAP MONUMENT
WISCONSIN COUNTY
COORDINATE SYSTEM
(DANE ZONE)
N:474,935.42
E:776,273.99
PER CITY OF MADISON
N:474,935.37
E:776,273.05

PROPOSED
BUILDING D
605 SOUTH POINT RD
1085.5 FFE

PRIVATE SAN MH
RIM: 1084.90'
W 8" INV: 1071.17'
E 8" INV: 1071.07'

PRIVATE SAN MH
RIM: 1082.05'
W 8" INV: 1070.33'
SE 8" INV: 1070.23'

CONNECT TO EX. SANITARY MH
EX SE 8" INV: 1069.58
PRO NW 8" INV: 1069.68

MH RIM = 1080.30
INV F = 1069.13
INV NW = 1069.23

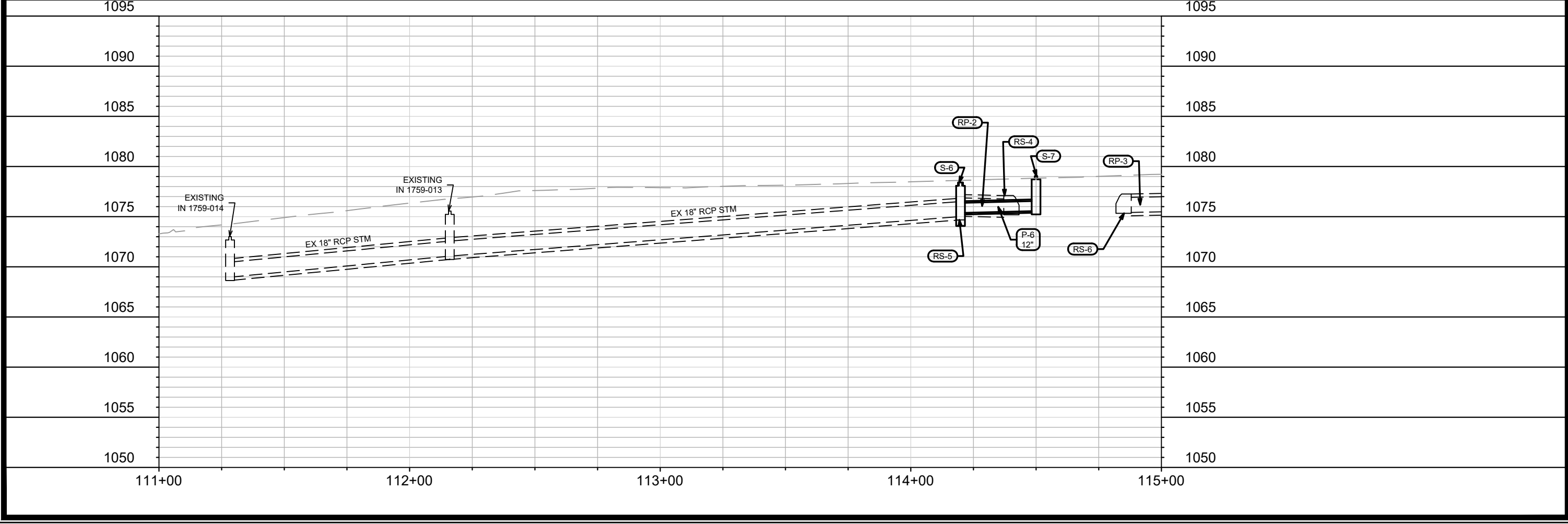
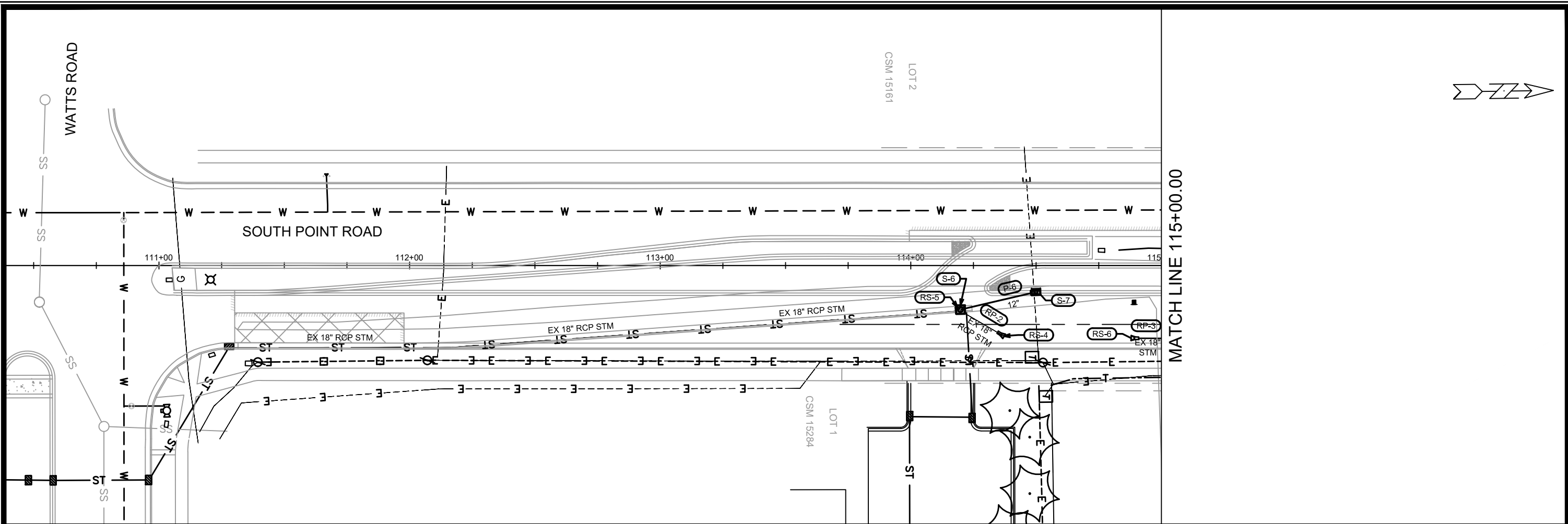
MARK	REVISION	DATE	BY

13219
MADISON, WI
8946
CONTRACT NO:

UTILITY PLAN
603 SOUTH POINT ROAD - EDISON EXPANSION
M:\DESIGN\Projects\13219\CAD\Streets\13219EN-PnP.dwg



13219
U-1



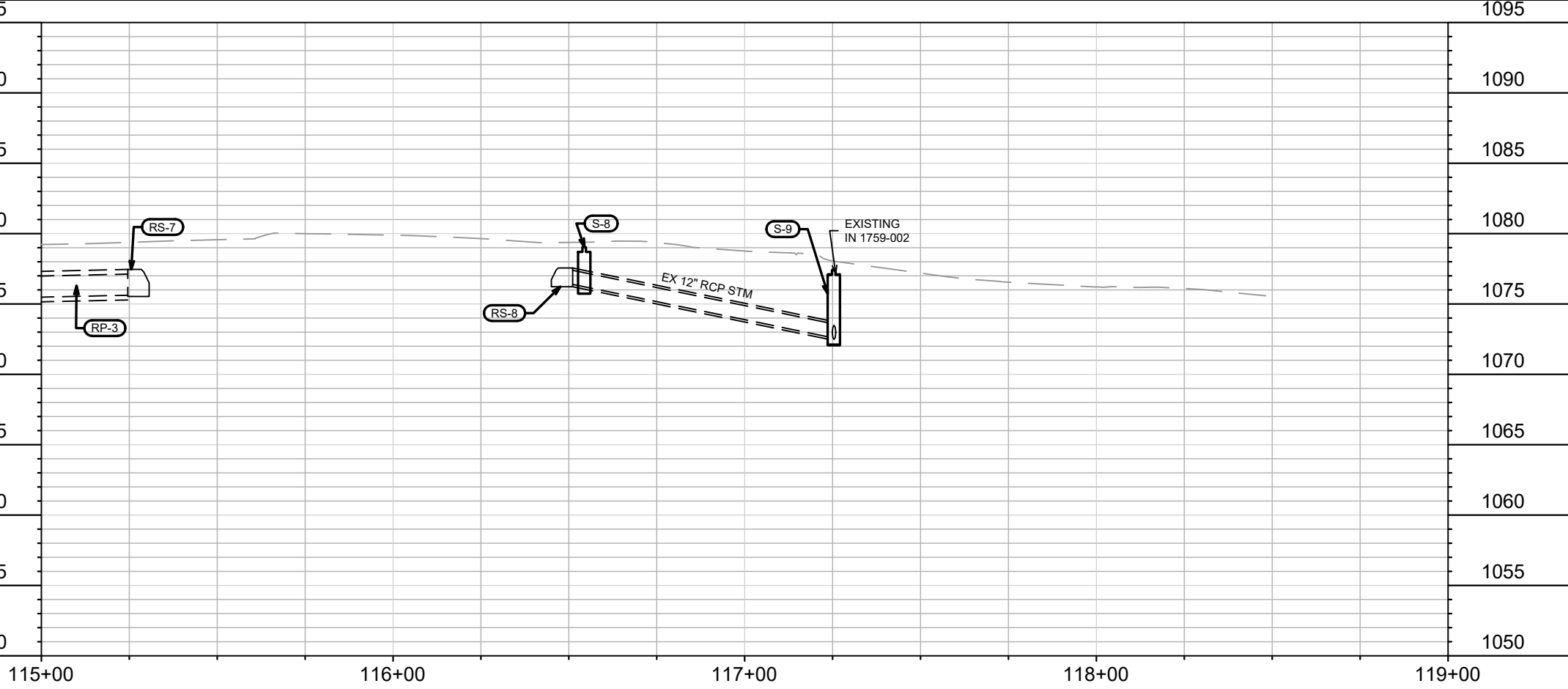
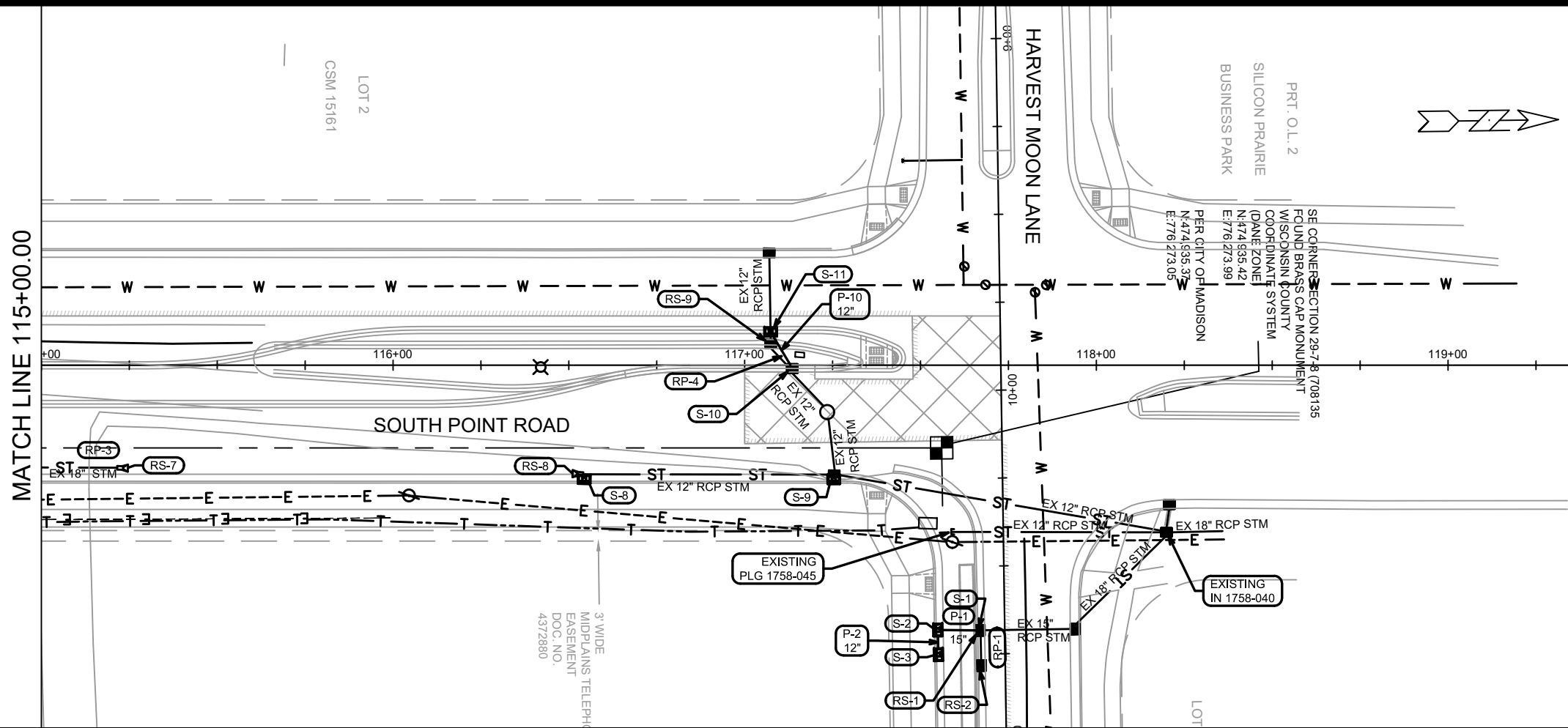
MARK	REVISION	DATE	BY
13219	U-2	4/7/2021 12:30 PM	U-2

13219
 MADISON, WI
 CONTRACT NO: 8946

STORM SEWER
 603 SOUTH POINT ROAD - EDISON EXPANSION
 M:\DESIGN\Projects\13219\CAD\Sewer\13219SWR-PipeNetwork.dwg



13219
 U-2




MARK	REVISION	DATE	BY
13219	U-3	12/17/2021	EEA

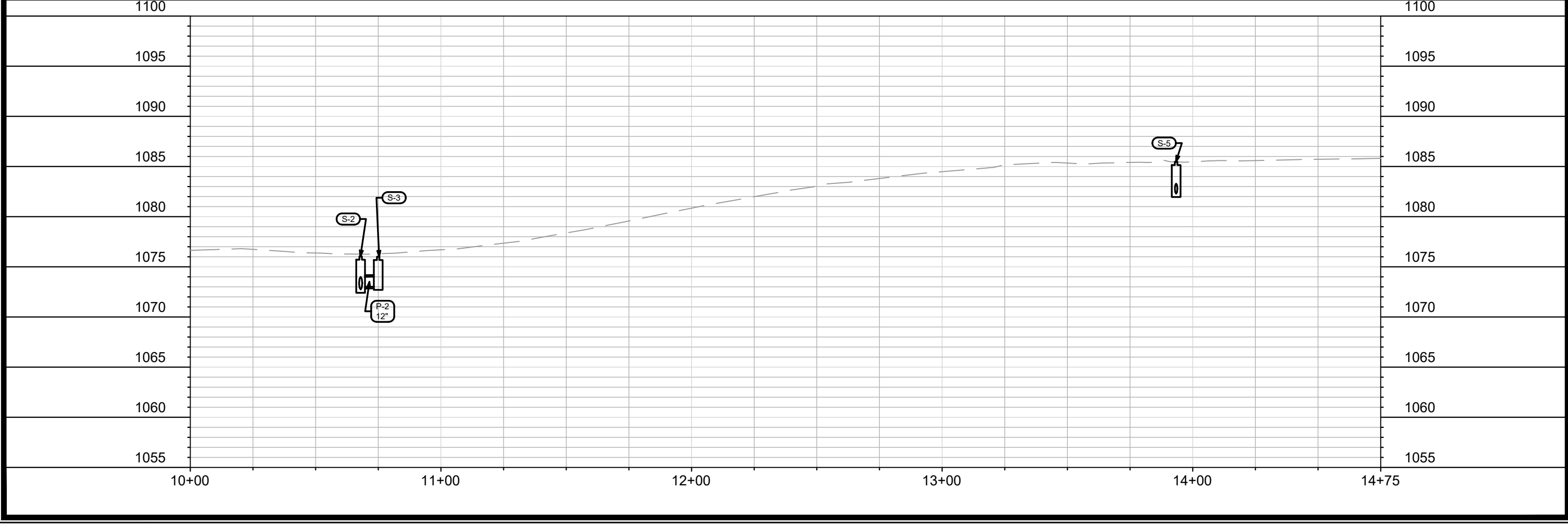
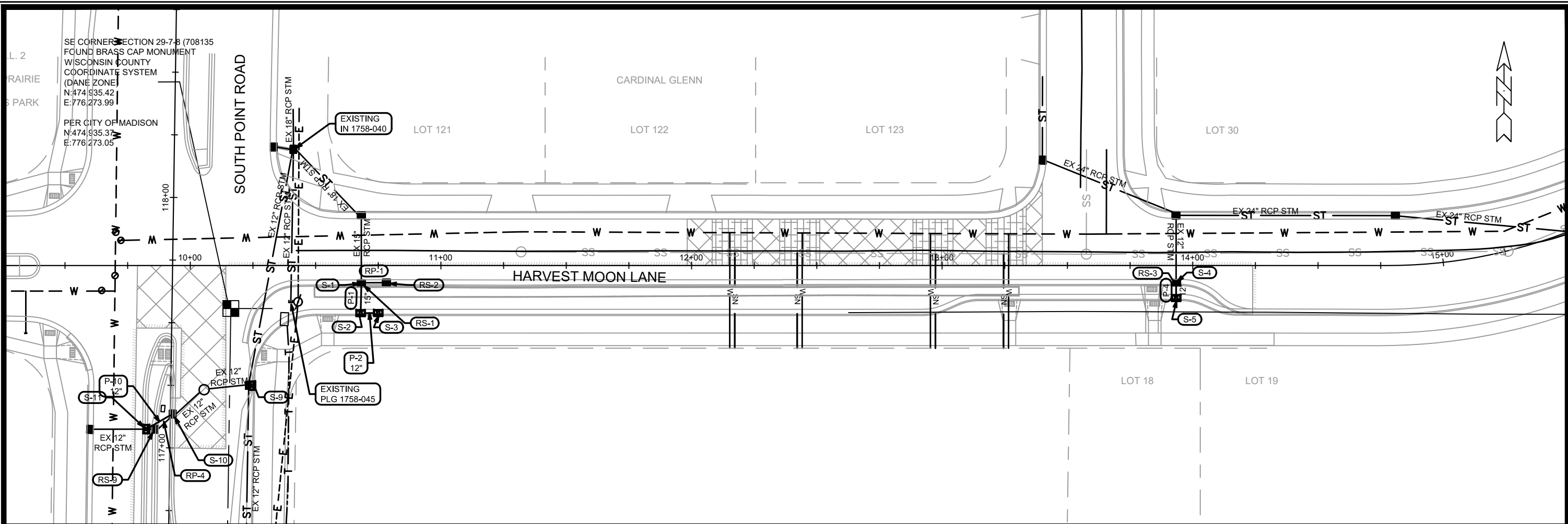
13219
MADISON, WI
CONTRACT NO: 8946

STORM SEWER
603 SOUTH POINT ROAD - EDISON EXPANSION

M:\DESIGN\Projects\13219\CAD\Sewers\13219SWR-PipeNetwork.dwg



13219
U-3



SE CORNER SECTION 29-7-8 (708135)
 FOUND BRASS CAP MONUMENT
 WISCONSIN COUNTY
 COORDINATE SYSTEM
 (DANE ZONE)
 N:474 935.42
 E:776 273.99
 PER CITY OF MADISON
 N:474 935.37
 E:776 273.05

MARK	REVISION	DATE	BY
13219	U-4	4/16/2021 12:18 PM	Scale: 1"=40'

13219
 MADISON, WI
 8946
 CONTRACT NO:

STORM SEWER
 603 SOUTH POINT ROAD - EDISON EXPANSION
 M:\DESIGN\Projects\13219\CAD\Sewers\13219SWR-PipeNetwork.dwg



13219
 U-4

STORM SEWER SCHEDULE

603 SOUTH POINT ROAD - EDISON EXPANSION	SHEET NO.
PROJECT NO. 13219	U-STM
STORM SEWER SCHEDULE	
CITY OF MADISON	

PROPOSED STORM STRUCTURES

STRUC. NO.	STATION	LOCATION (OFFSET)	TYPE	TOP OF CASTING	E.I.	DEPTH	NOTES
HARVEST MOON LANE							
S-1	10+68.25	RT-7.18	CONCRETE COLLAR	-	1072.56	-	-
S-2	10+68.00	RT-19.00	H INLET	1076.51	1072.74	3.77	W/ R-3067-7004-V
S-3	10+74.99	RT-19.00	H INLET	1076.48	1073.03	3.45	LP; W/ R-3067-7004-VB; (1)
S-4	13+93.35	RT-6.69	CONCRETE COLLAR	-	1082.17	-	-
S-5	13+93.35	RT-13.00	H INLET	1085.47	1082.29	3.18	W/ R-3067-7004-V
SOUTH POINT ROAD							
S-6	114+19.82	RT-17.58	3X3 SAS	1078.41	1075.37	3.04	FP; W/ R-1550
S-7	114+50.00	RT-11.00	H INLET	1079.05	1075.56	3.49	LP; W/ R-3067-7004-VB
S-8	116+54.36	RT-32.50	3X3 SAS	1079.04	1076.07	2.97	FP; W/ R-3067-7004-V; (2)
S-9	117+25.27	RT-32.50	ADJUST & REBUILD	1077.88	1072.48	5.40	(3)
S-10	117+13.58	RT-0.88	STORM TAP	-	1074.13	-	TAP EX IN 1659-053
S-11	117+07.38	LT-10.00	H INLET	1078.54	1074.71	3.83	W/ R-3067-7004-V; (4)

STORM STRUCTURE REMOVALS

STRUC. NO.	ID NO.	STATION	LOCATION (OFFSET)	TYPE	NOTES
HARVEST MOON LANE					
RS-1	IN 1758-043	10+68.25	RT-7.18	H INLET	-
RS-2	IN 1758-044	10+78.28	RT-7.18	H INLET	-
RS-3	IN 1758-036	13+93.35	RT-7.09	H INLET	-
SOUTH POINT ROAD					
RS-4	AE 1759-012	114+37.10	RT-28.17	18" APRON END	-
RS-5	IN 1659-059	114+19.82	RT-17.58	H INLET	-
RS-6	AE 1759-006	114+87.94	RT-29.03	18" APRON END	-
RS-7	AE 1759-005	115+24.57	RT-29.18	18" APRON END	-
RS-8	AE 1759-003	116+51.09	RT-30.84	12" APRON END	-
RS-9	IN 1659-002	117+07.40	LT-6.04	H INLET	-

SPECIFIC NOTES:

- (1) INSTALL LOW POINT PVC DRAIN; SEE S.D.D. 5.7.7A
- (2) RECONNECT EXISTING 12" PIPE TO NORTH
- (3) REBUILD EX INLET 1759-002 AND ADJUST CASTING TO NEW CURB
- (4) RECONNECT EXISTING 12" PIPE WEST

STANDARD NOTES:

- PLAN LENGTH (PAY LENGTH) IS FROM CENTER OF STRUCTURE TO CENTER OF STRUCTURE. PIPE LENGTH IS ACTUAL LENGTH OF PIPE FROM STRUCTURE WALL TO STRUCTURE WALL. SLOPE CALCULATED USING PIPE LENGTH.
- ABBREVIATIONS: AE = APRON ENDWALL; RCP = REINFORCED CONCRETE PIPE; HERCP = HORIZONTAL ELLIPTICAL REINFORCED CONCRETE PIPE; DNA = DOES NOT APPLY; SAS = SEWER ACCESS STRUCTURE; LP = LOW POINT INLET STRUCTURE; FP = FIELD POURED STRUCTURE; TR = TOP OF CONCRETE ROOF; NCM = NO CROWN MATCH FOR PIPES; UD = UNDERDRAIN
- APPROXIMATE DISCHARGE E.I. GIVEN, ADJUST E.I. AND PIPE SLOPE IN THE FIELD.
- TOP OF CASTING GRADE GIVEN IS THE TOP OF CURB FOR INLET STRUCTURES AND THE FLOWLINE OF THE CLOSED CASTING FOR SAS's.
- ALL REINFORCED CONCRETE PIPES TO BE CLASS III UNLESS OTHERWISE NOTED.
- SURVEYOR TO CONFIRM THAT ALL INLET STATION / OFFSETS LINE UP WITH PROPOSED CURB AND GUTTER.

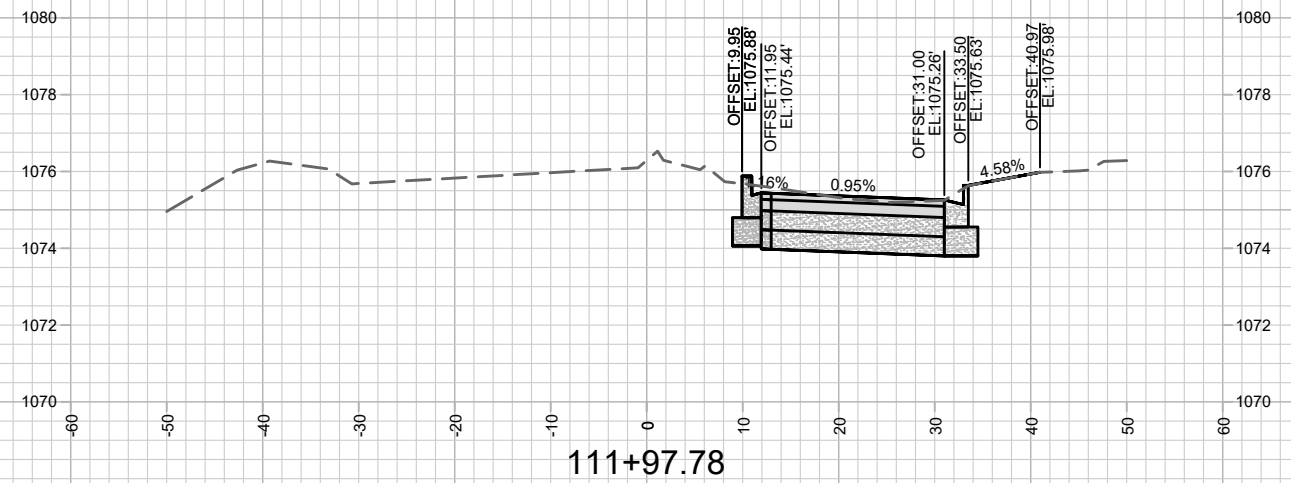
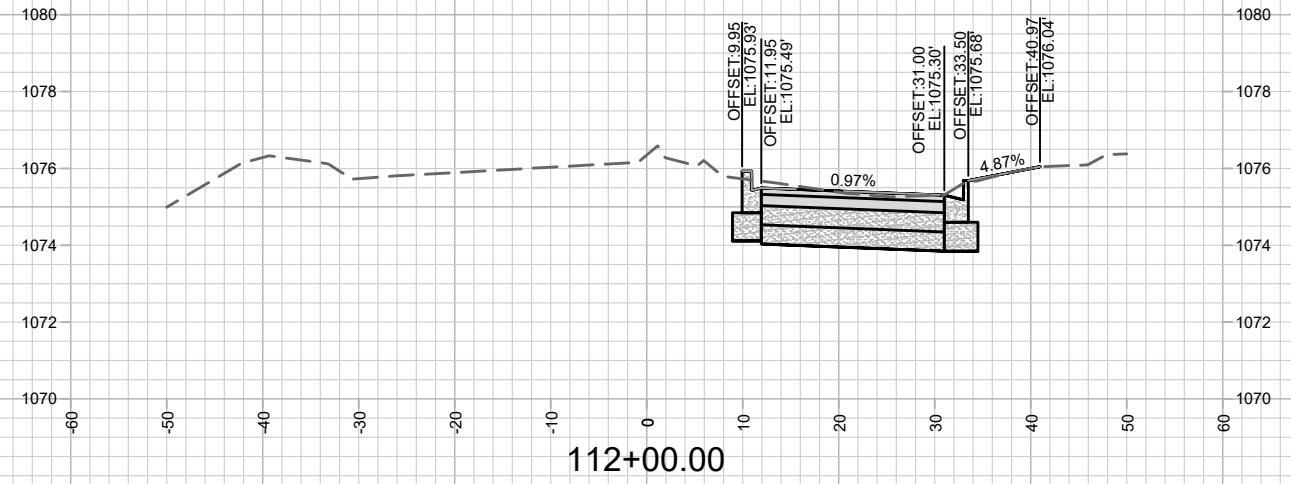
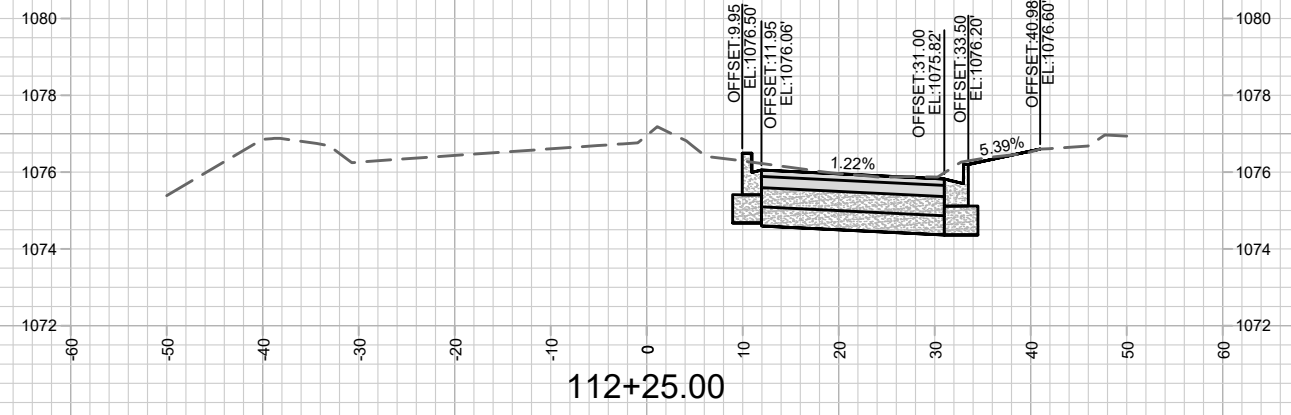
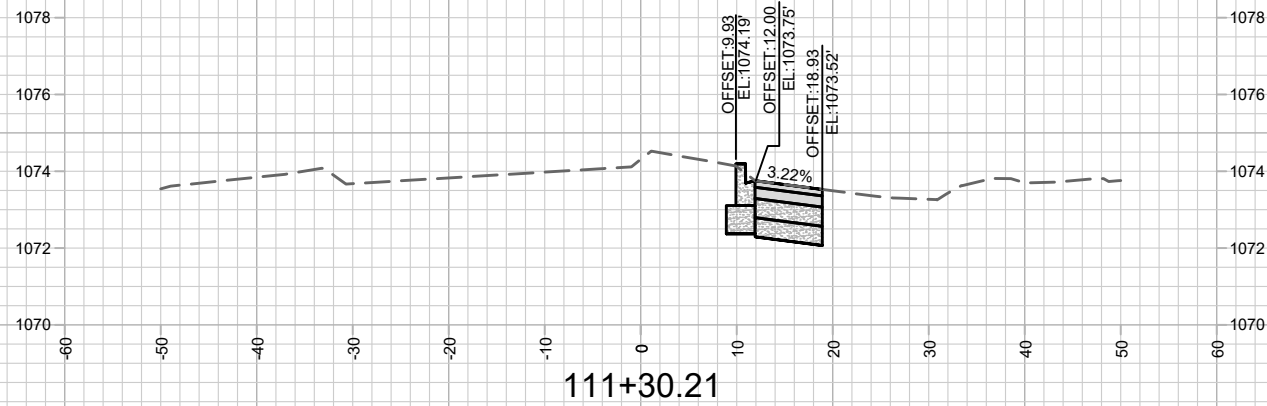
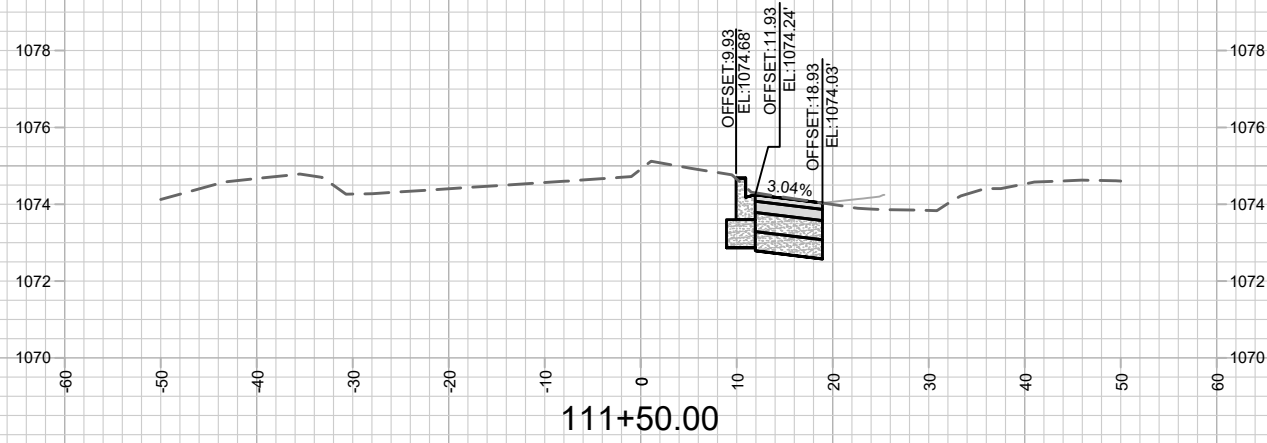
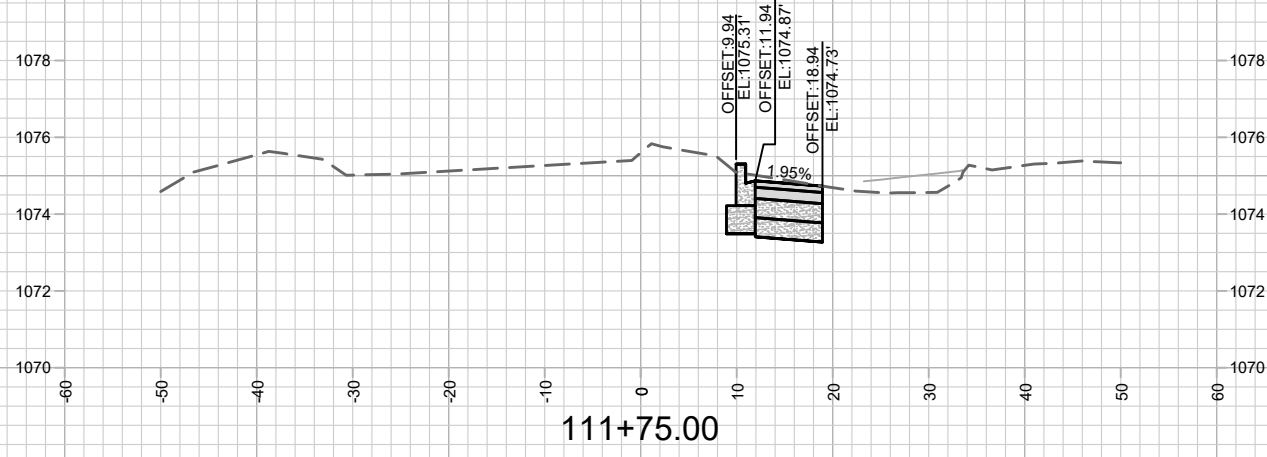
PROPOSED STORM PIPES

PIPE NO.	FROM (DNSTM)	TO (UPSTM)	DISCH. E.I.	INLET E.I.	PLAN (PAY) LGTH (FT)	PIPE LGTH (FT)	SLOPE (%)	PIPE SIZE	TYPE	NOTES
P-1	S-1	S-2	1072.56	1072.74	12	12	1.50%	15"	TYPE I	-
P-2	S-2	S-3	1072.99	1073.03	7	7	0.57%	12"	TYPE II	-
P-4	S-4	S-5	1082.17	1082.29	6	6	2.00%	12"	TYPE I	-
P-6	S-6	S-7	1075.37	1075.56	31	28	0.68%	12"	TYPE I	NCM
P-10	S-10	S-11	1074.13	1074.71	12	12	4.83%	12"	TYPE II	-

STORM PIPE REMOVALS

PIPE REMOVAL NO.	REMOVE FROM	REMOVE TO	LENGTH (FT)	SIZE	TYPE	NOTES
RP-1	RS-1	RS-2	10	12"	RCP	-
RP-2	RS-4	RS-5	20	18"	RCP	-
RP-3	RS-6	RS-7	37	18"	HDPE	-
RP-4	S-10	RS-9	9	12"	RCP	-

- ALL FIELD POURED SAS STORM STRUCTURES SHALL BE CONSTRUCTED IN ACCORDANCE WITH STANDARD DETAIL DRAWING 5.7.3. ALL PRECAST SAS STORM STRUCTURES SHALL BE CONSTRUCTED IN ACCORDANCE WITH STANDARD DETAIL DRAWING 5.7.5.
- ALL STRUCTURES CALLED OUT AS FIELD POURED SHALL BE FIELD POURED. ALL OTHER STRUCTURES (NOT INDICATED AS FIELD POURED) SHALL BE SUBMITTED TO CITY ENGINEERING FOR APPROVAL IF PRECAST STRUCTURES ARE PREFERRED. CONTACT ELIA E ACOSTA OF CITY ENGINEERING AT (608) 266-4096 FOR STORM SEWER PRECAST APPROVALS, FAX SHOP DRAWINGS TO (608)264-9275, OR EMAIL SHOP DRAWINGS TO EACOSTA@CITYOFMADISON.COM.
- FOR SWM PRECAST APPROVALS CONTACT PHIL GAEBLER AT (608) 266-4059 OR EMAIL SWM SHOP DRAWINGS TO PGAEBLER@CITYOFMADISON.COM



MARK	REVISION	DATE	BY

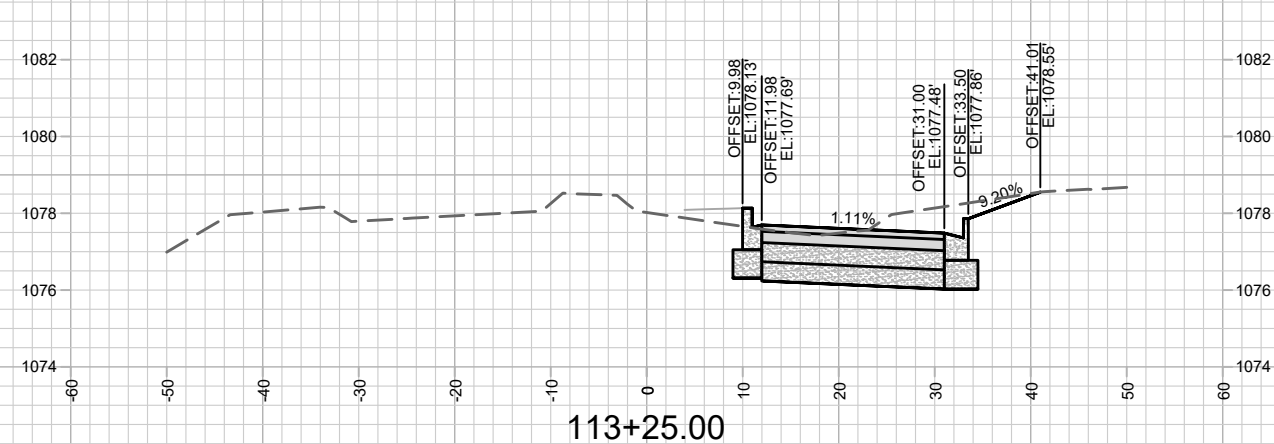
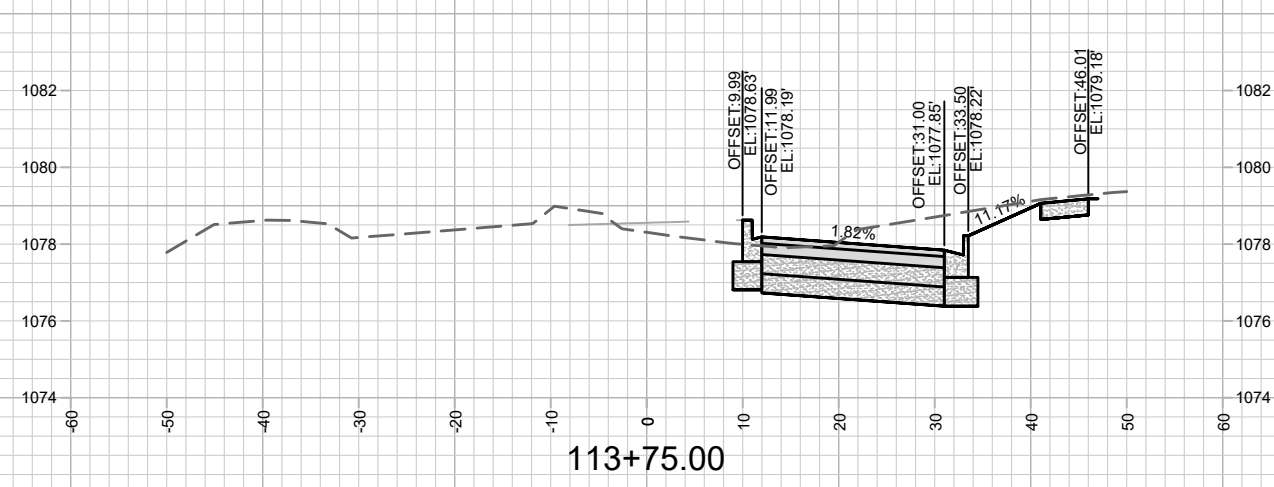
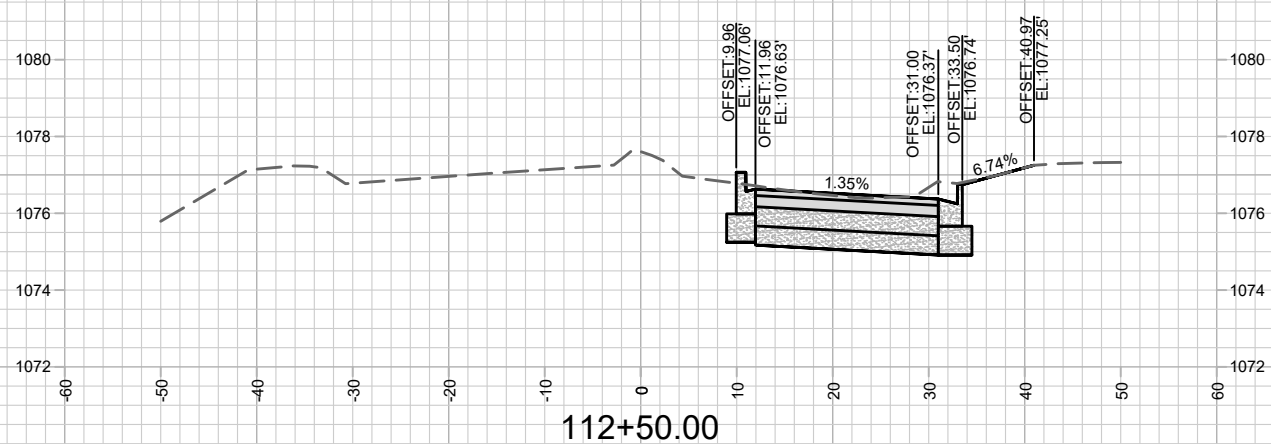
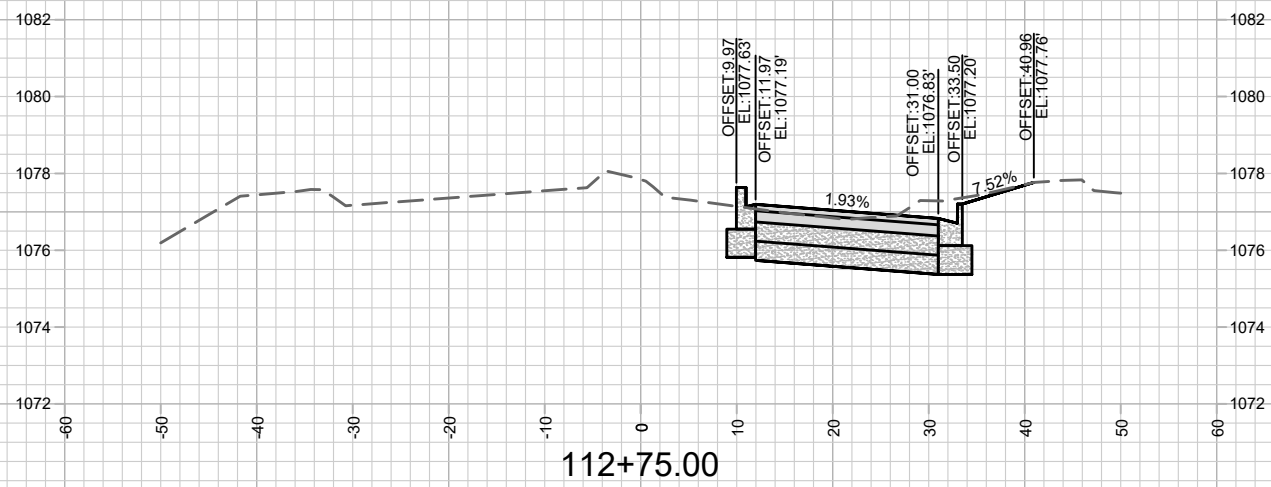
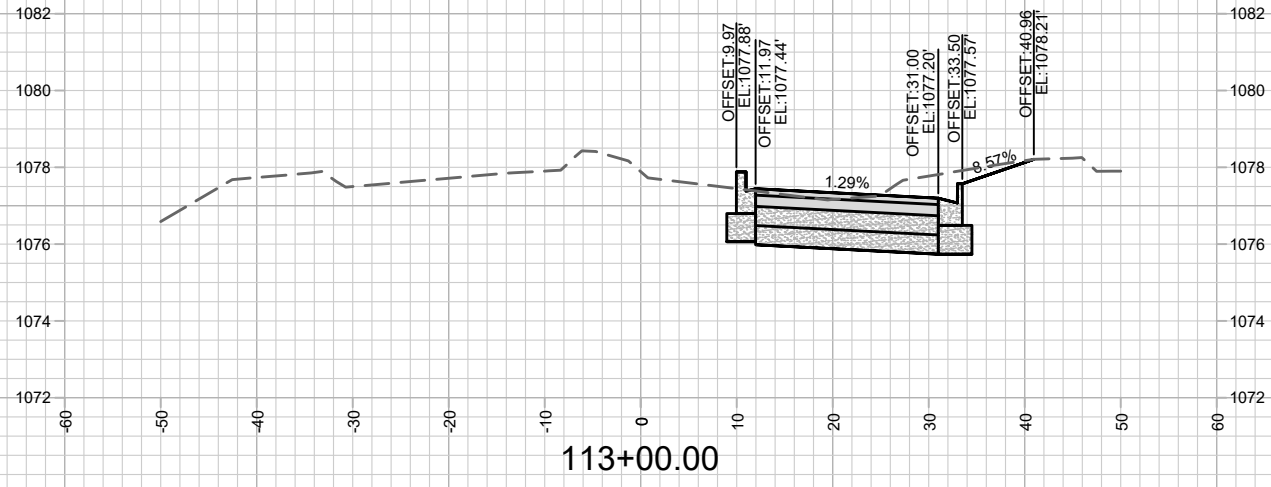
13219
MADISON, WI
8946

CONTRACT NO:

SOUTH POINT ROAD - CROSS SECTIONS
603 SOUTH POINT ROAD - EDISON EXPANSION
M:\DESIGN\Projects\13219\CAD\Streets\13219EN-A\IP\Corridor_Setup.dwg



13219
X-1



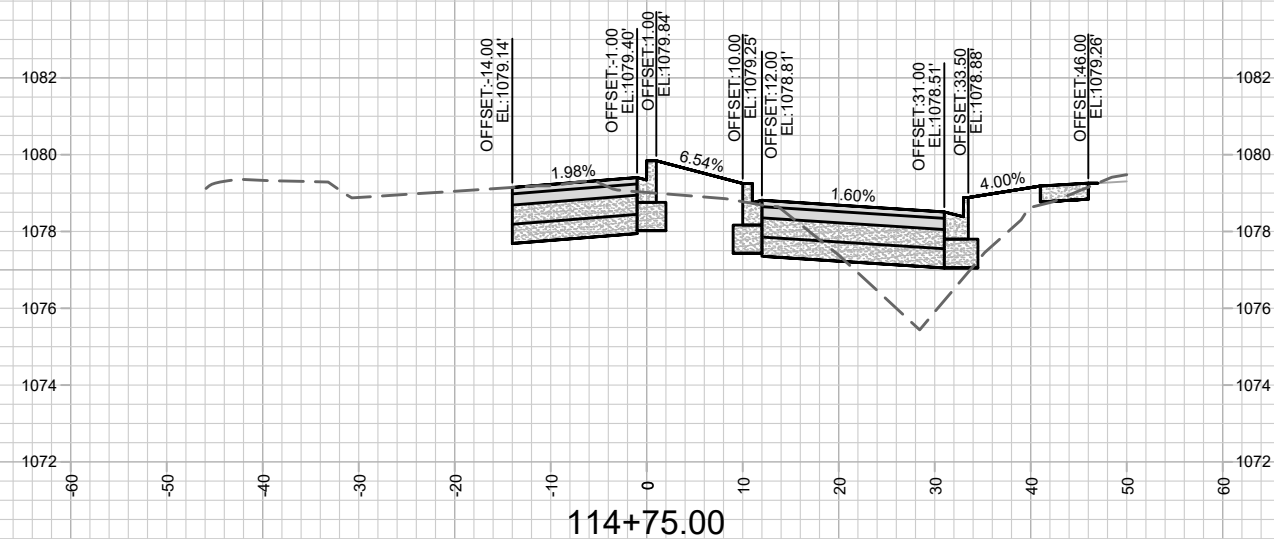
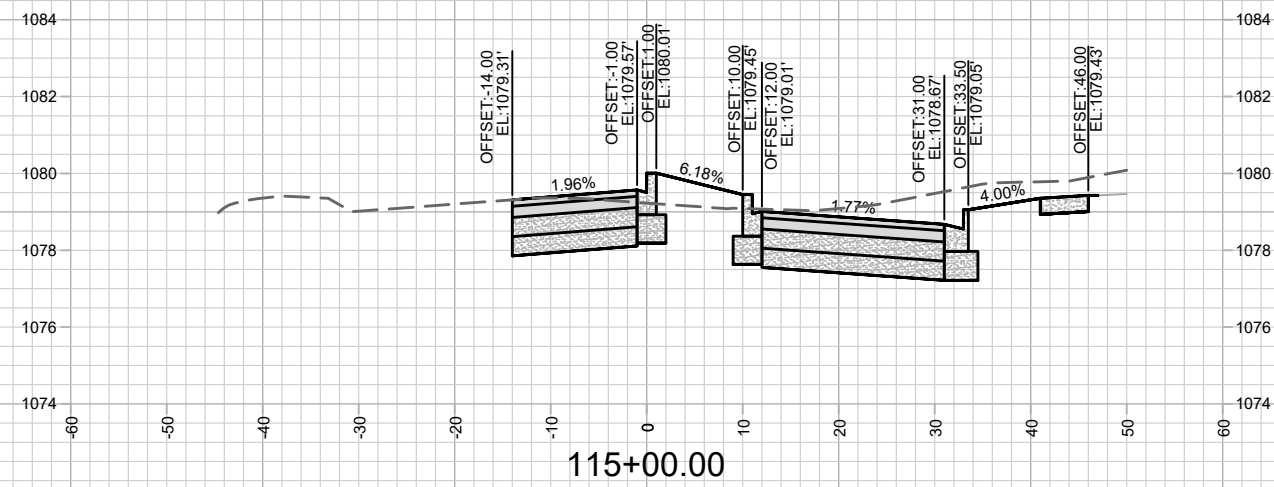
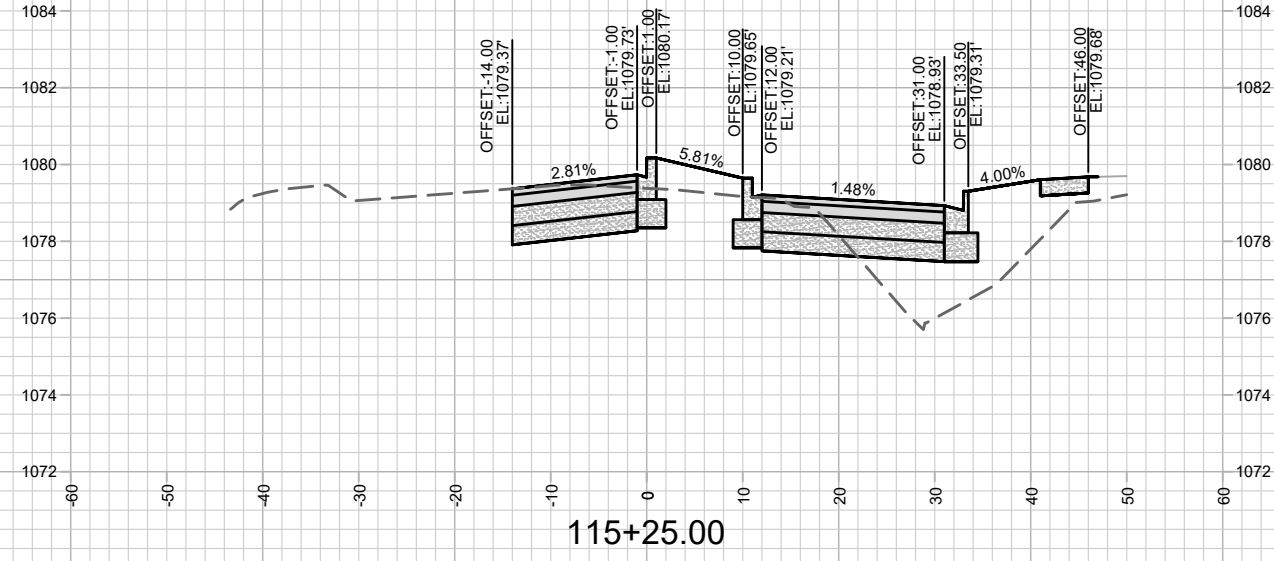
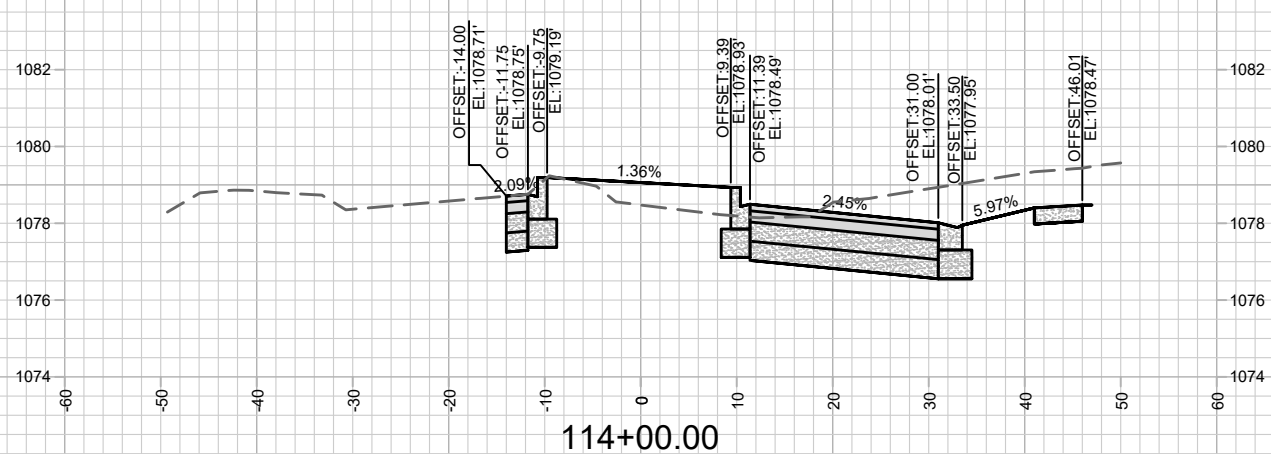
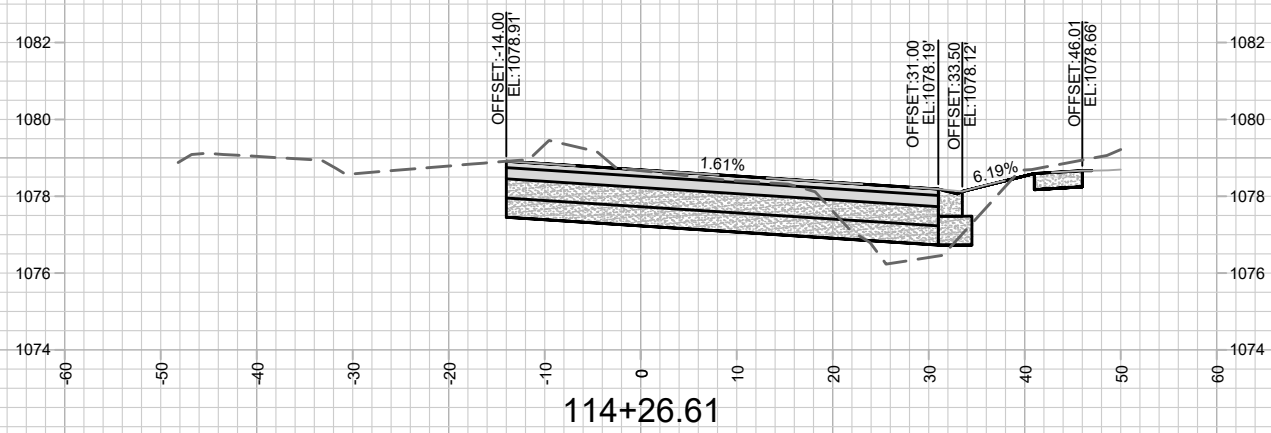
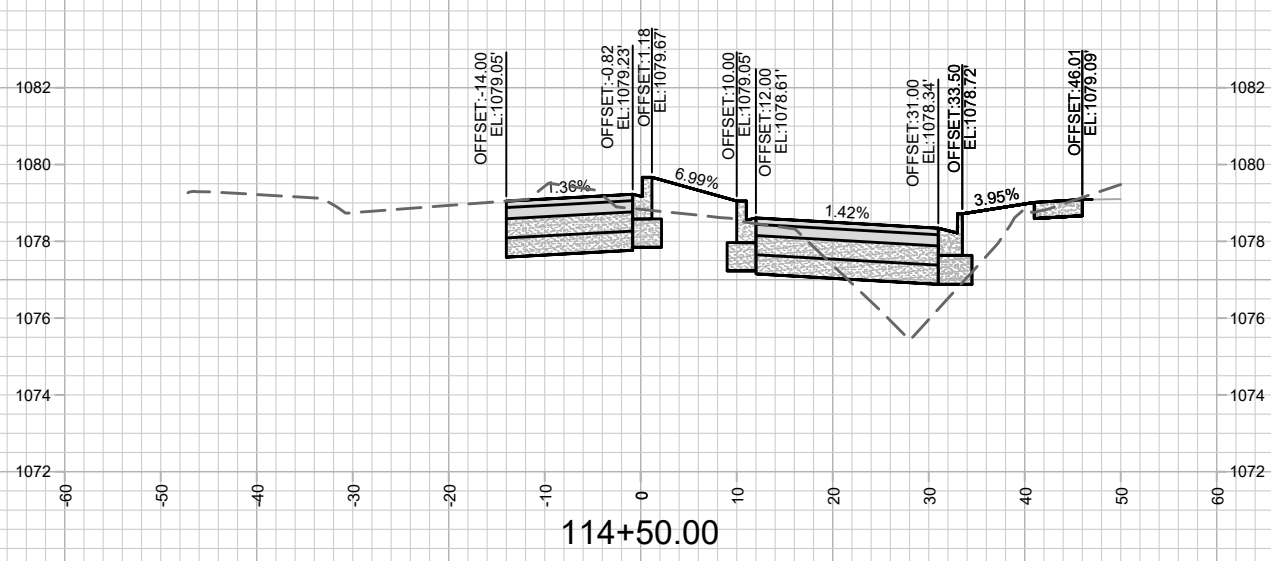
MARK	REVISION	DATE	BY

13219
MADISON, WI
8946
CONTRACT NO:

SOUTH POINT ROAD - CROSS SECTIONS
603 SOUTH POINT ROAD - EDISON EXPANSION
M:\DESIGN\Projects\13219\CAD\Streets\13219EN-AI\Prof&Corridor_Setup.dwg



13219
X-2



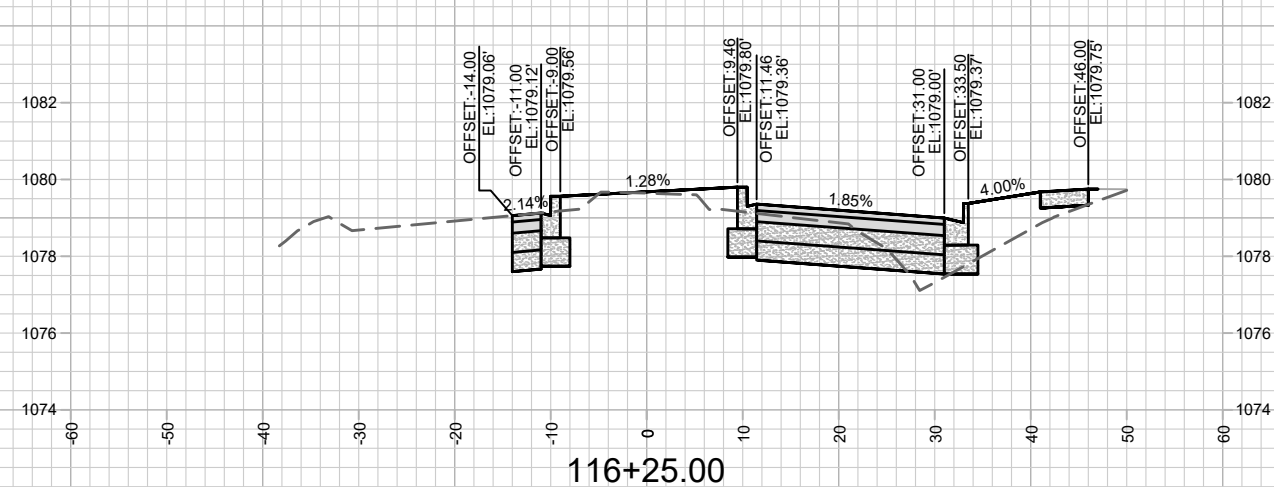
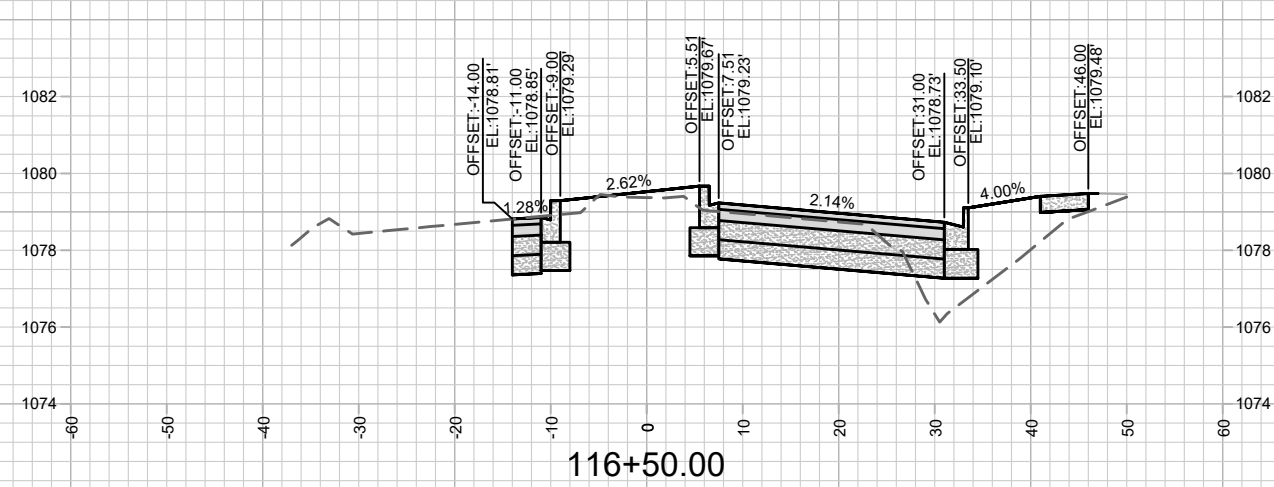
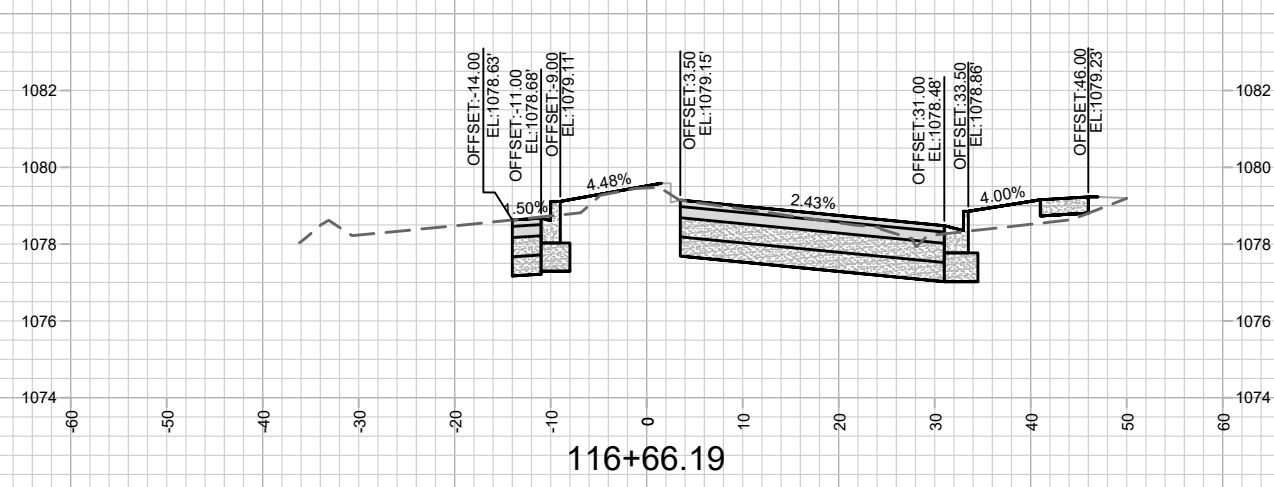
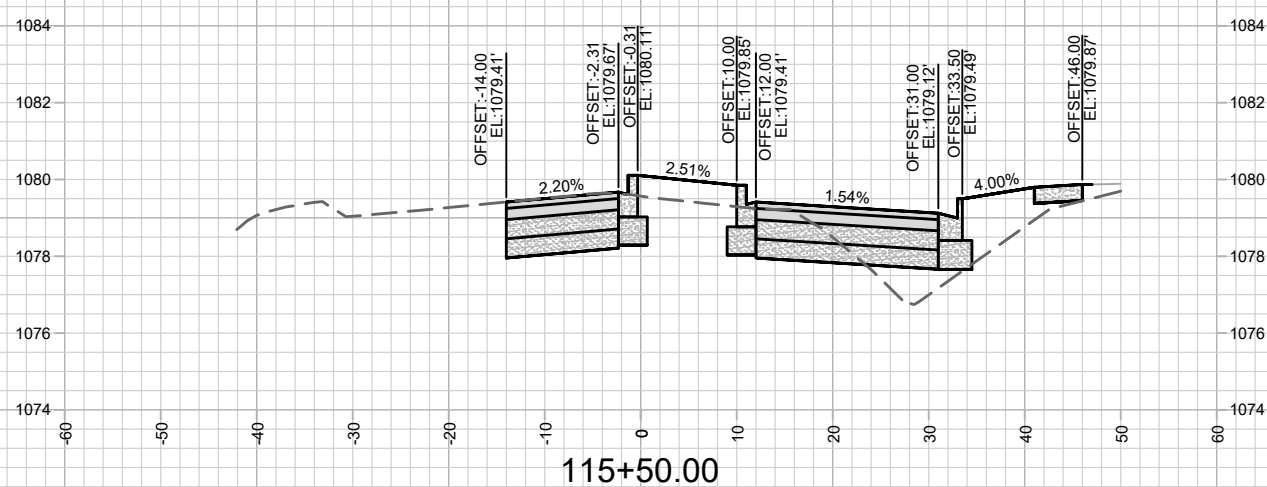
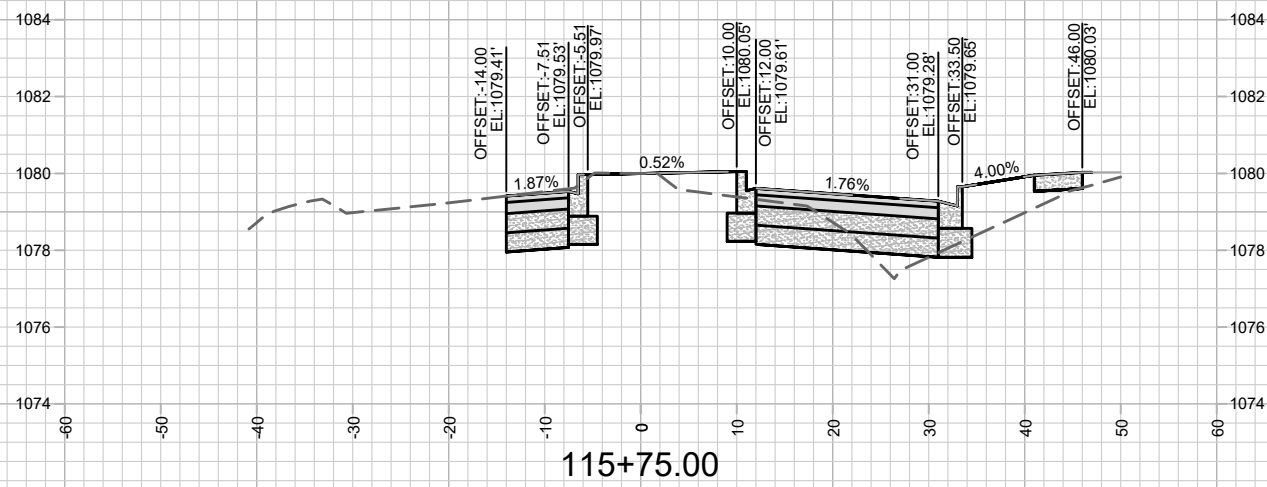
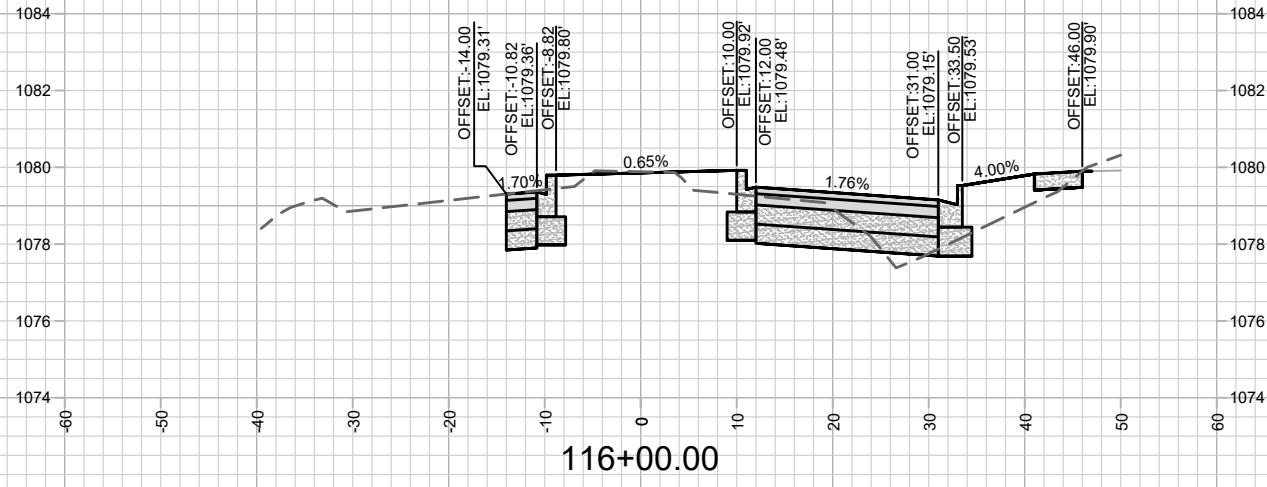
MARK	REVISION	DATE	BY

Scale: #####

13219
MADISON, WI
8946
CONTRACT NO:

SOUTH POINT ROAD - CROSS SECTIONS
603 SOUTH POINT ROAD - EDISON EXPANSION
M:\DESIGN\Projects\13219\CAD\Streets\13219EN-AIIProf&Corridor_Setup.dwg

13219
X-3

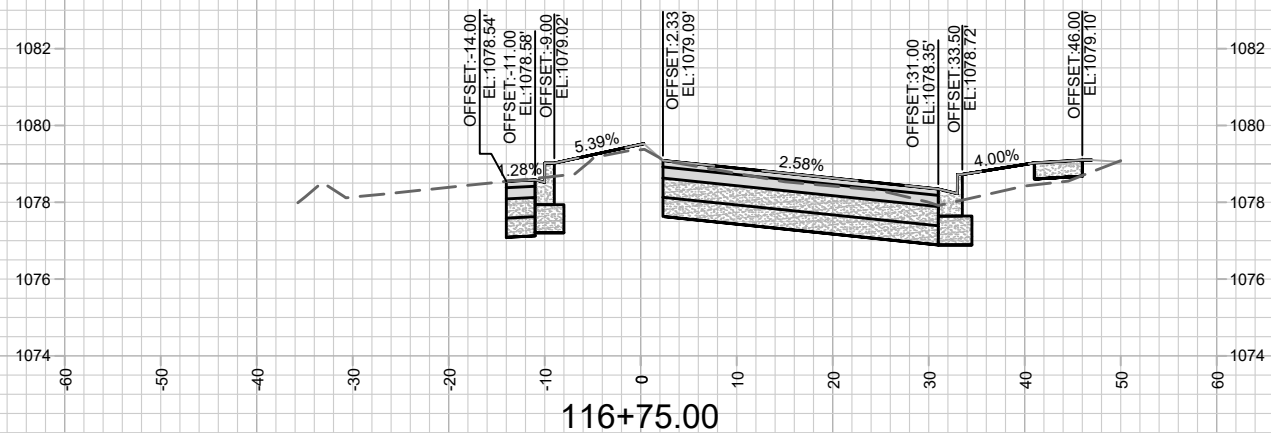
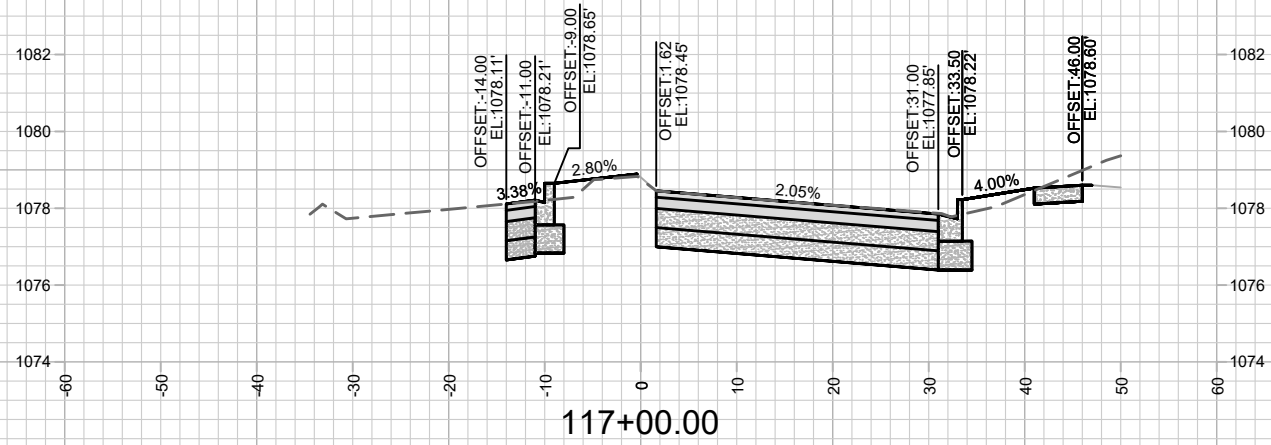
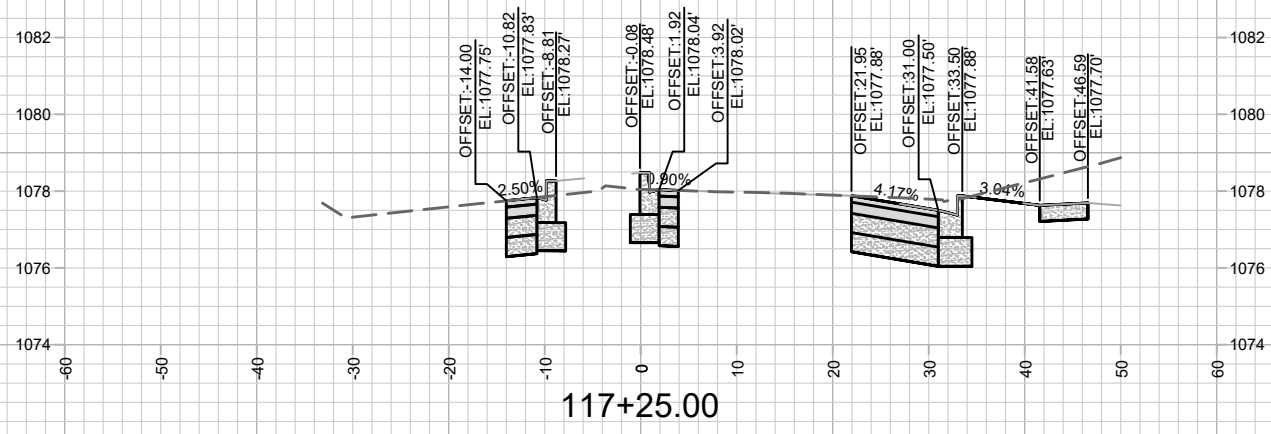


MARK	REVISION	DATE	BY

Designed By: AJC Date: 3/26/2021 1:31 PM Scale: ##### X-4

13219
MADISON, WI
8946
CONTRACT NO:

SOUTH POINT ROAD - CROSS SECTIONS
603 SOUTH POINT ROAD - EDISON EXPANSION
M:\DESIGN\Projects\13219\CAD\Streets\13219EN-AI\Prof&Corridor_Setup.dwg



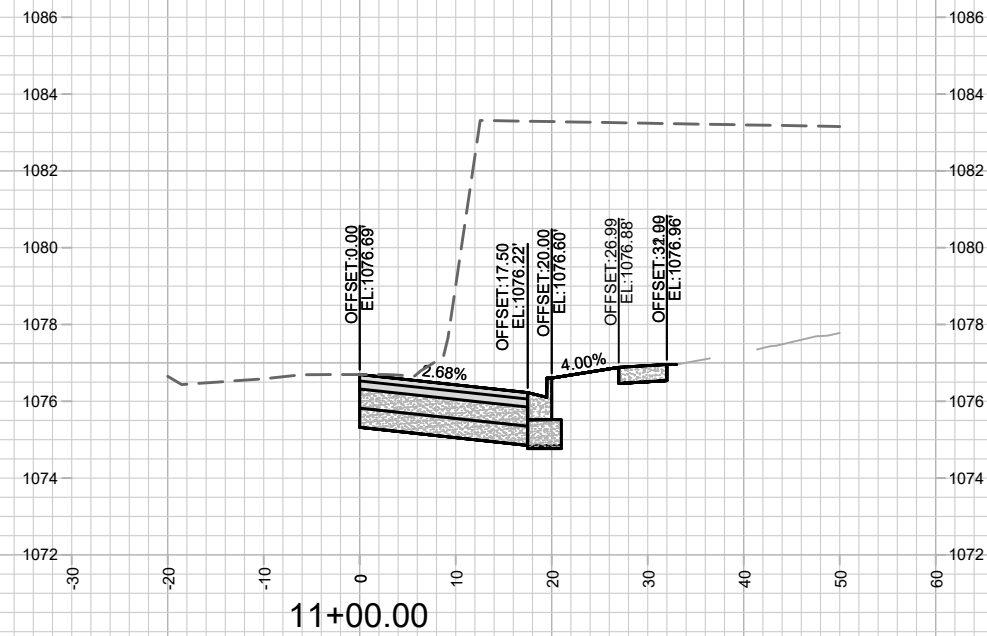
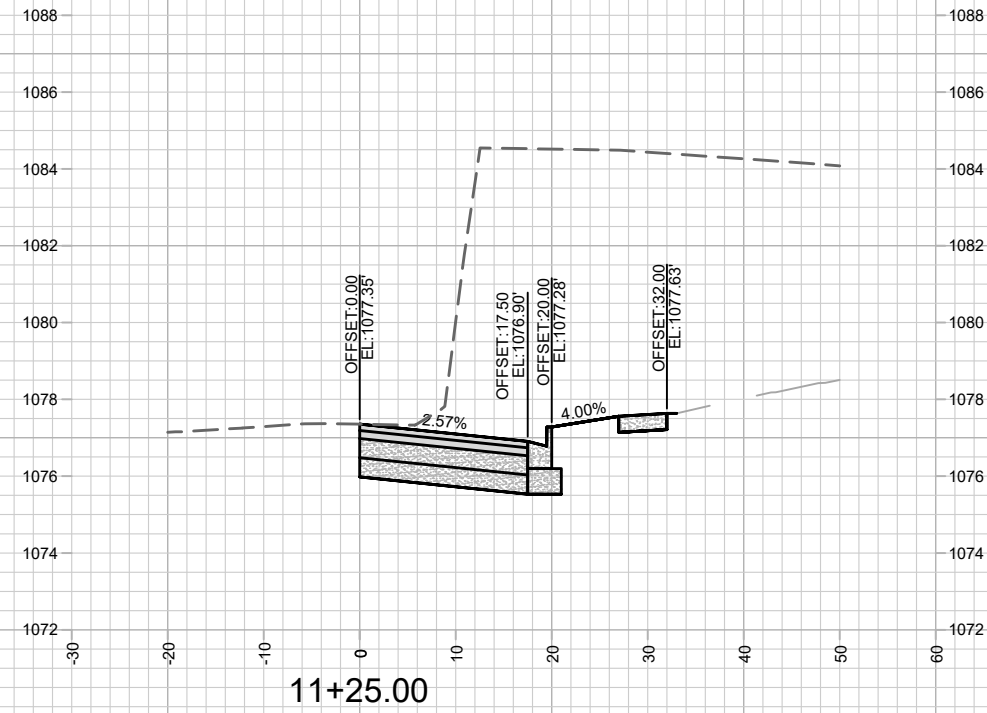
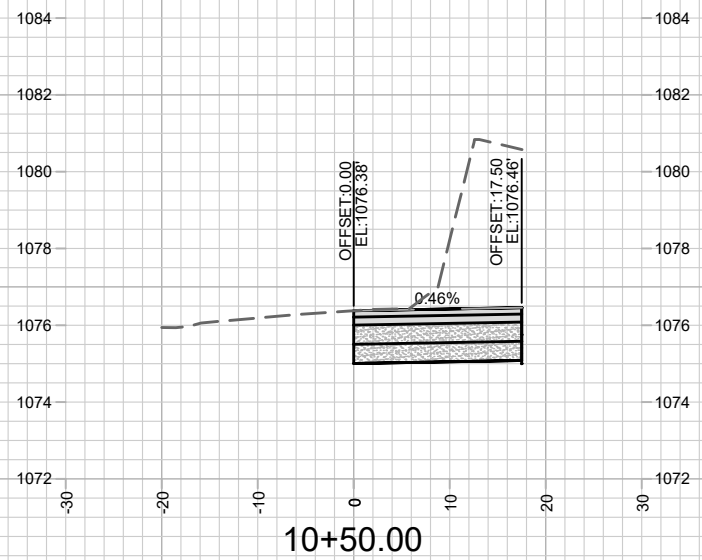
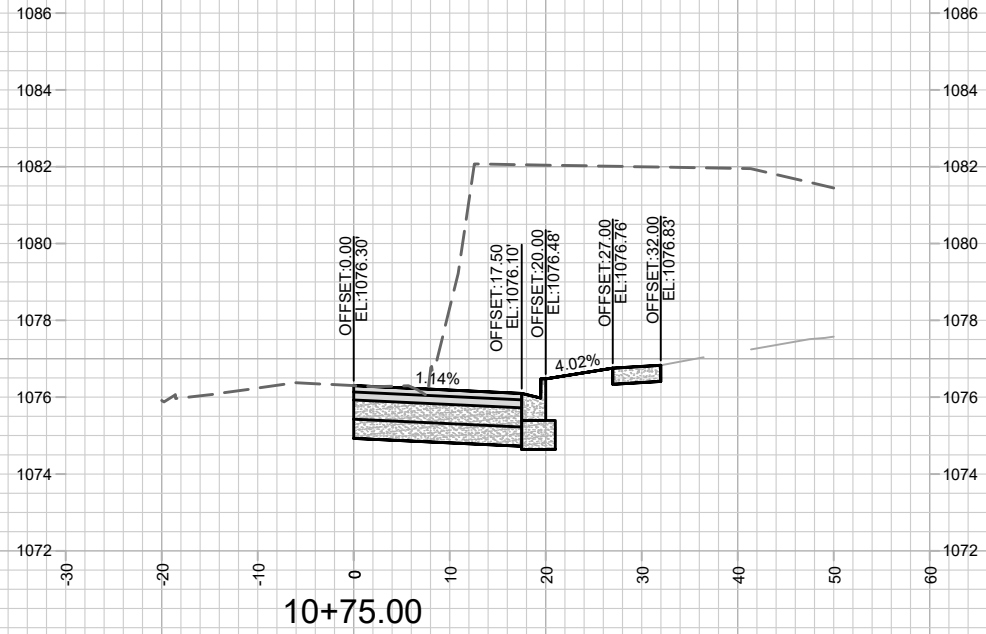
MARK	REVISION	DATE	BY
13219	3/26/2021 1:31 PM	13219	X-5

13219
MADISON, WI
8946
CONTRACT NO:

SOUTH POINT ROAD - CROSS SECTIONS
603 SOUTH POINT ROAD - EDISON EXPANSION
M:\DESIGN\Projects\13219\CAD\Streets\13219EN-AI\Prof&Corridor_Setup.dwg



13219
X-5



MARK	REVISION	DATE	BY

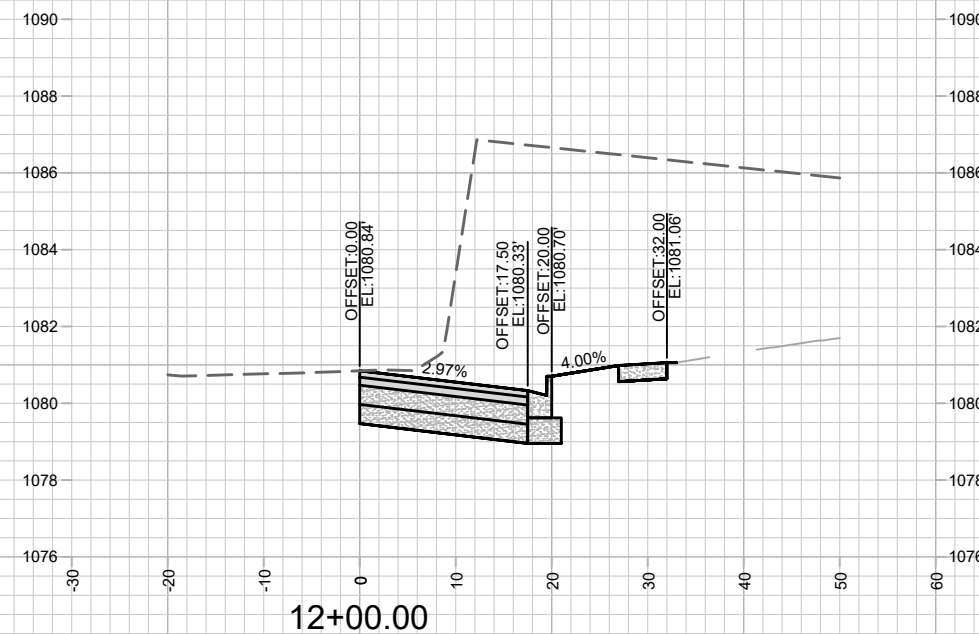
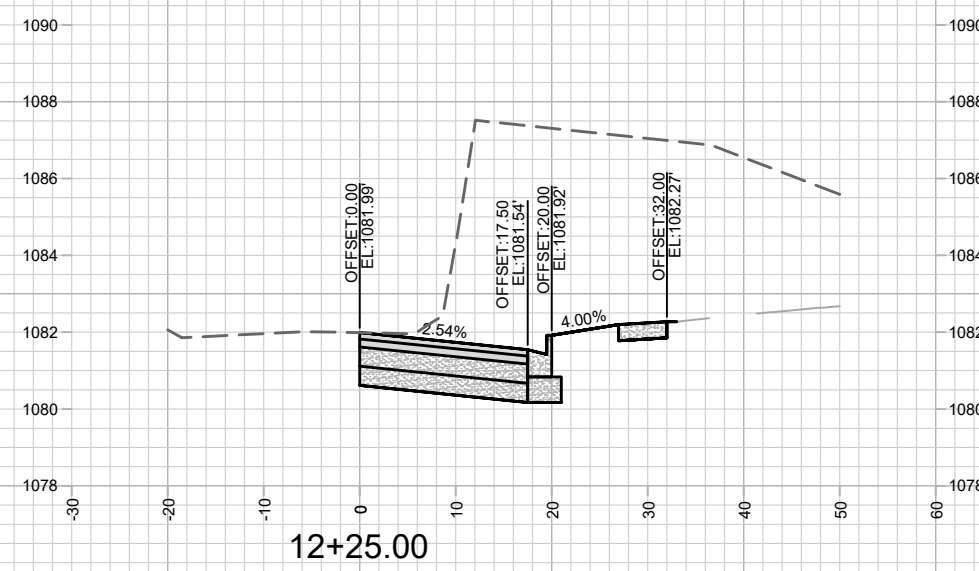
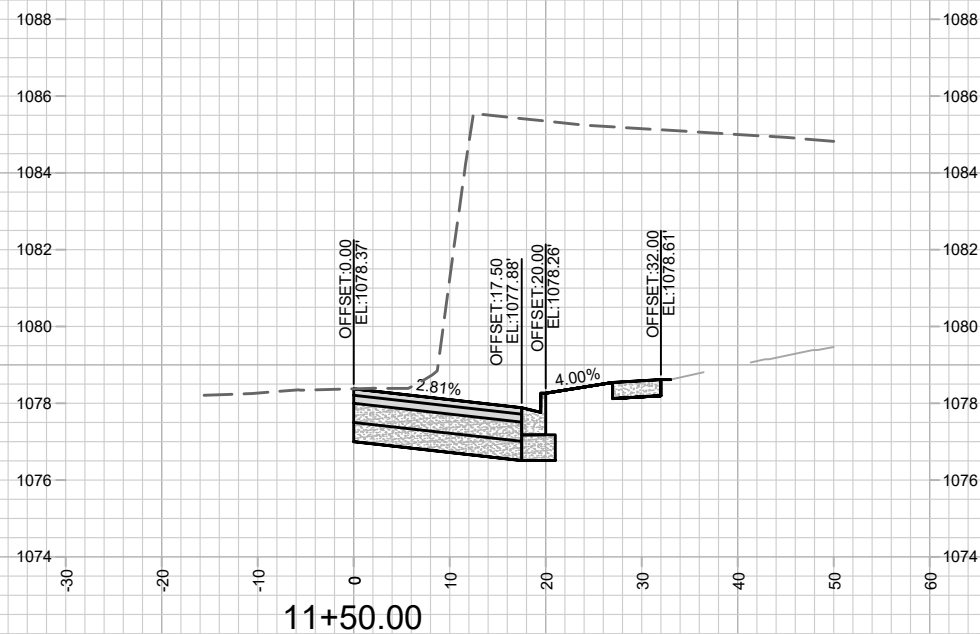
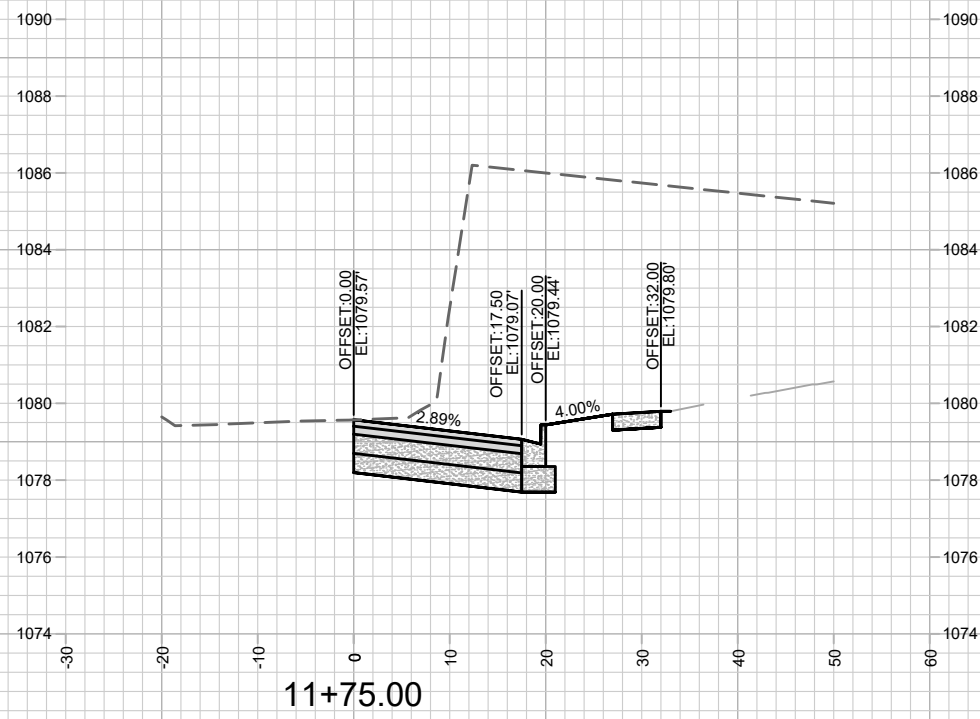
Designed By: AJC
Date: 3/24/2021 11:42 AM
Scale: #####
13219
X-6

13219
MADISON, WI
8946
CONTRACT NO:

HARVEST MOON LANE - CROSS SECTIONS
603 SOUTH POINT ROAD - EDISON EXPANSION
M:\DESIGN\Projects\13219\CAD\Streets\13219EN-AIPProf&Corridor_Setup.dwg



13219
X-6



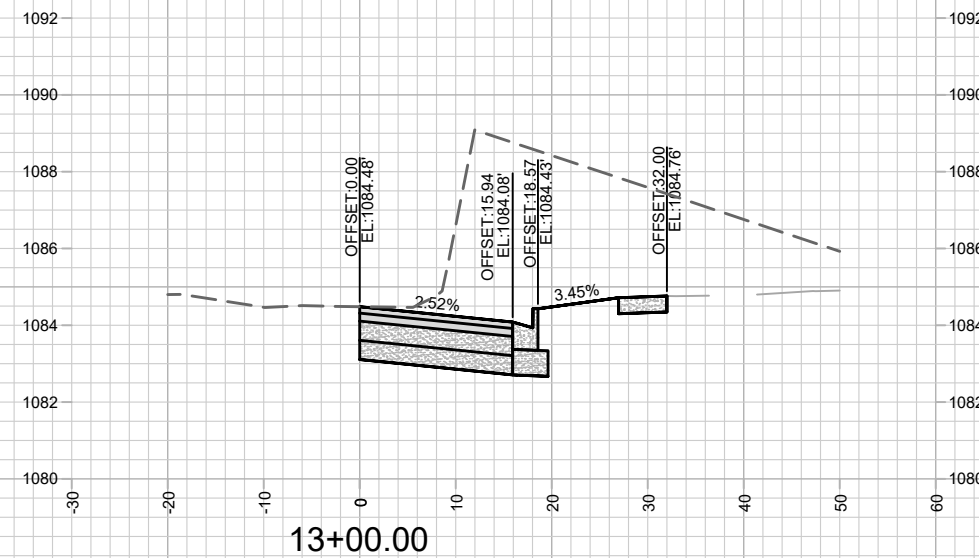
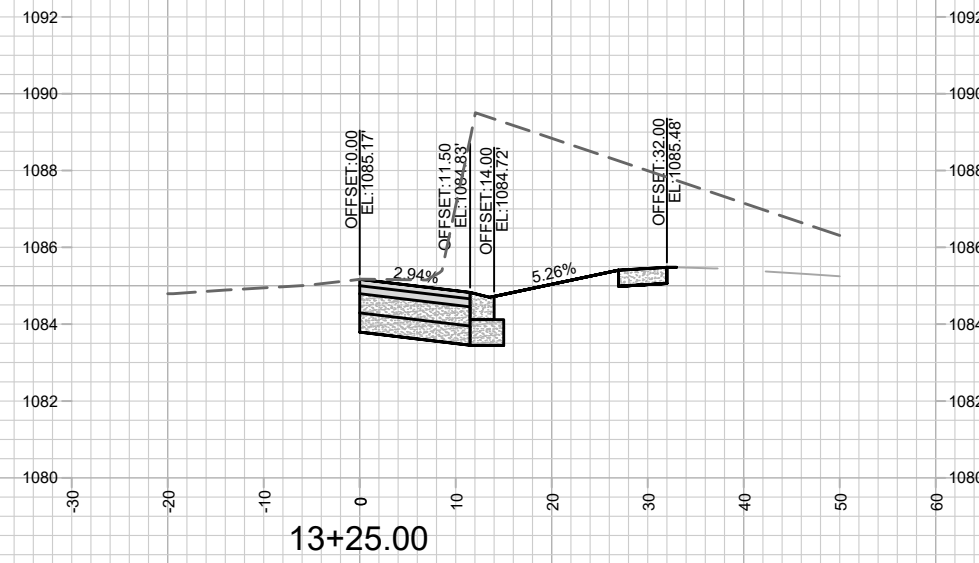
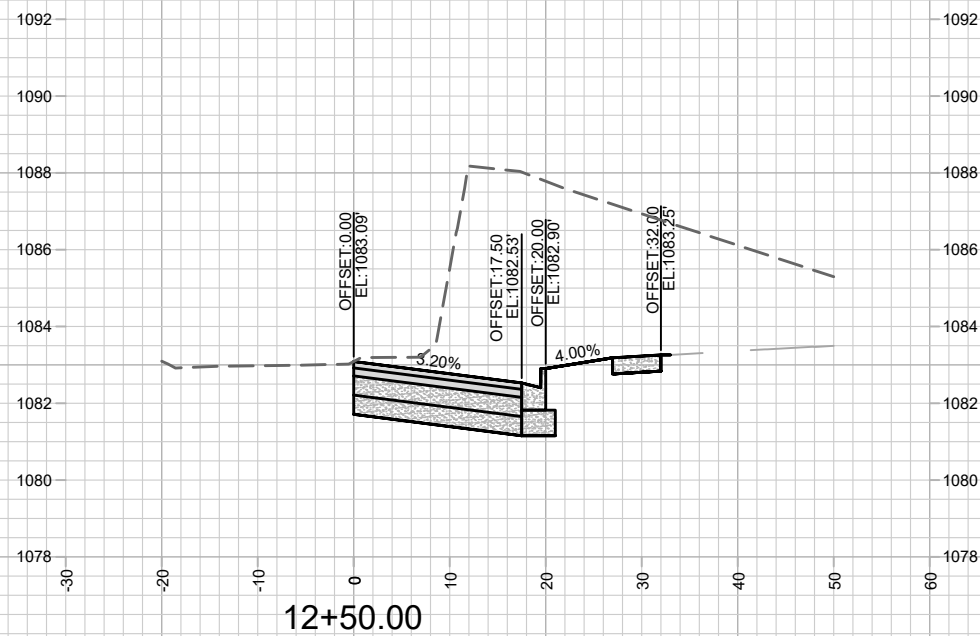
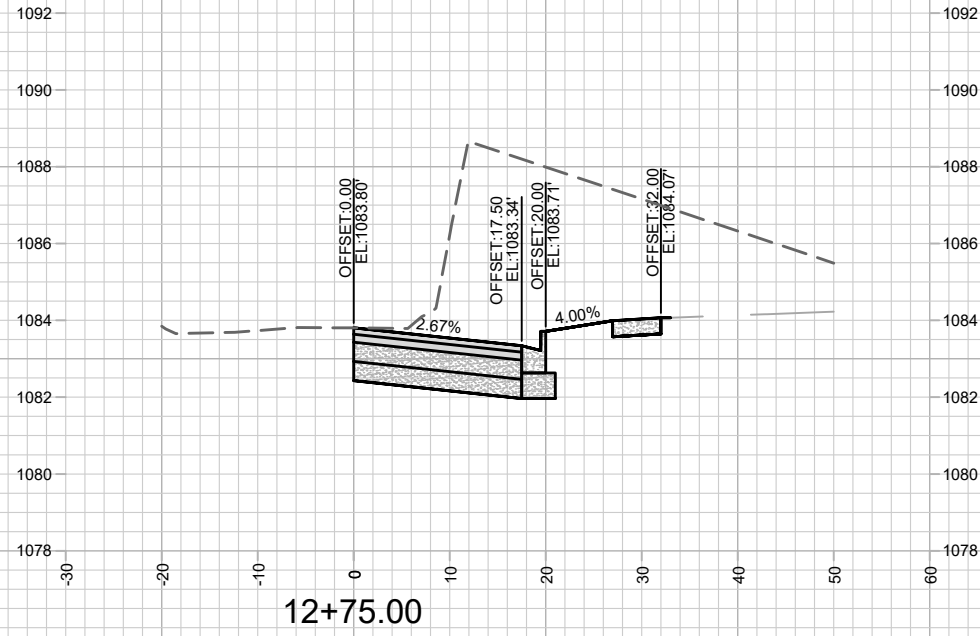
MARK	REVISION	DATE	BY

Designed By: AJC
Date: 3/24/2021 11:42 AM
Scale: #####
13219
X-7

13219
MADISON, WI
8946
CONTRACT NO:

HARVEST MOON LANE - CROSS SECTIONS
603 SOUTH POINT ROAD - EDISON EXPANSION
M:\DESIGN\Projects\13219\CAD\Streets\13219EN-AI\Prof&Corridor_Setup.dwg

13219
X-7



MARK	REVISION	DATE	BY

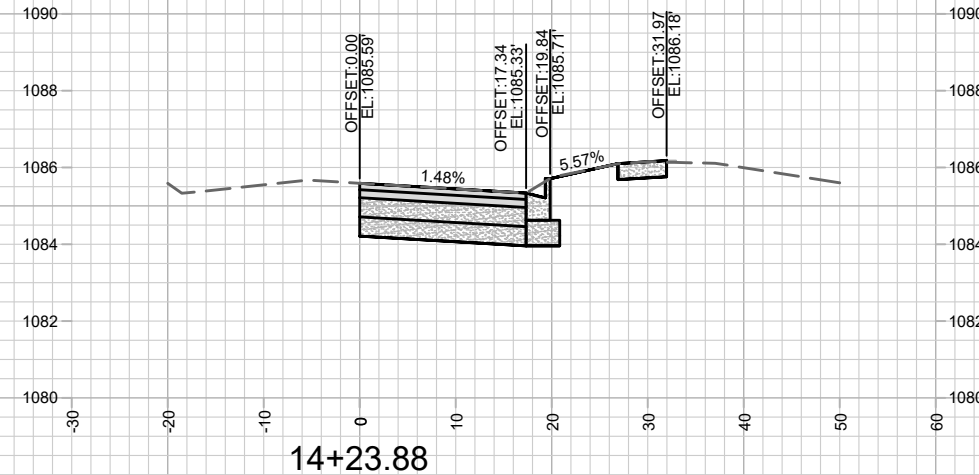
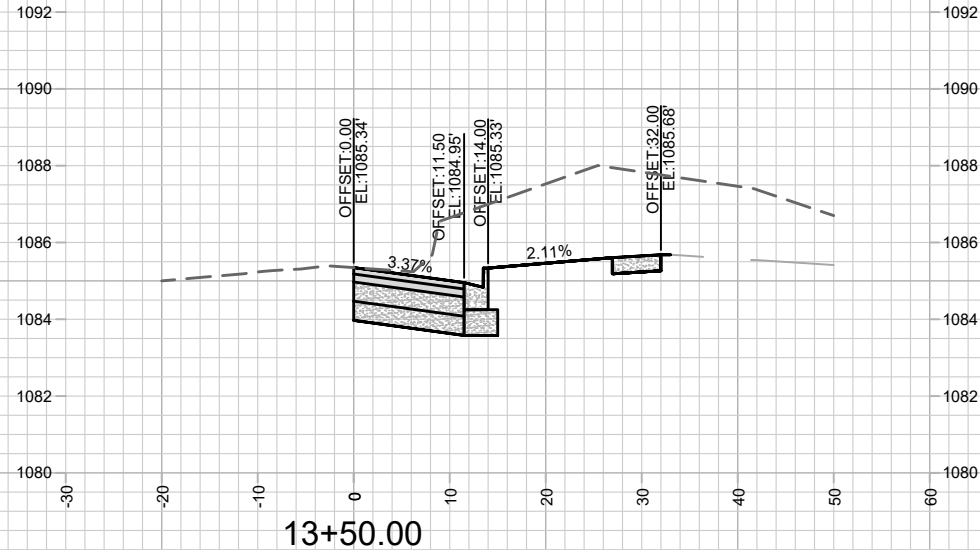
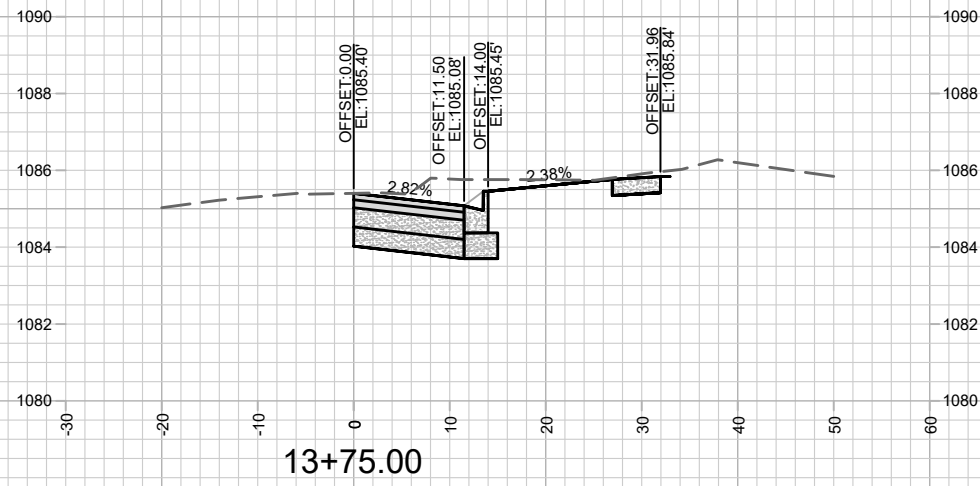
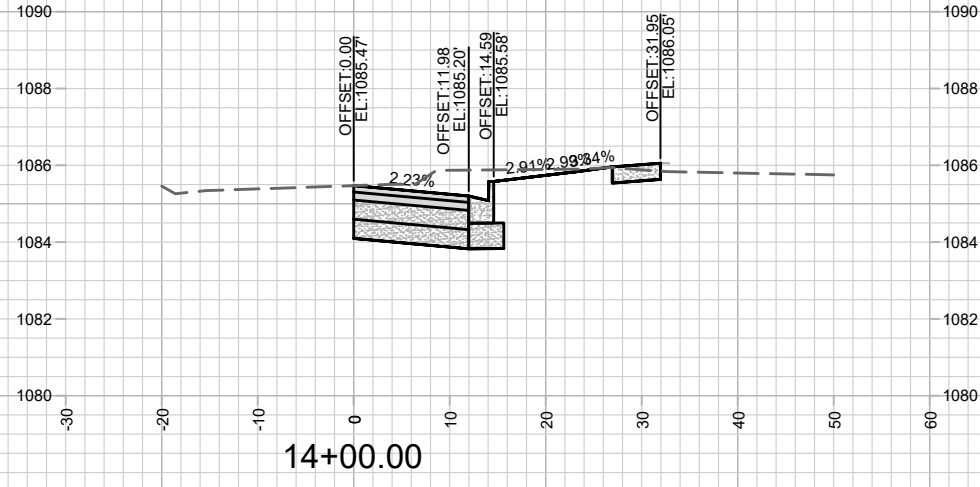
13219
MADISON, WI
8946
CONTRACT NO:

HARVEST MOON LANE - CROSS SECTIONS
603 SOUTH POINT ROAD - EDISON EXPANSION
M:\DESIGN\Projects\13219\CAD\Streets\13219EN-AIPProf&Corridor_Setup.dwg



13219
X-8

Designed By: AJC
Date: 3/24/2021 11:42 AM
Scale: #####
X-8



MARK	REVISION	DATE	BY

Designed By: AJC
Date: 3/24/2021 11:42 AM
Scale: #####

13219
MADISON, WI
8946
CONTRACT NO:

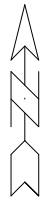
HARVEST MOON LANE - CROSS SECTIONS
603 SOUTH POINT ROAD - EDISON EXPANSION

M:\DESIGN\Projects\13219\CAD\Streets\13219EN-AI\Prof&Corridor_Setup.dwg

13219
X-9



**NOT FOR CONSTRUCTION -
CITY RECORDS ONLY**



MAINTENANCE LEGEND:

- = TERRACE REQUIRE MOWING BY CITY
- = SIDEWALK AND BIKE PATHS REQUIRE SNOW REMOVAL BY CITY
- = BUS STOP PAD REQUIRES SNOW REMOVAL BY CITY
- =CROSSWALK OR CONCRETE WATERWAY REQUIRE SNOW REMOVAL BY CITY)
- = PRIVATELY MAINTAINED (MEDIANS, ISLAND, ROUNDABOUTS & PRIVATE OUTLOTS)
- = PUBLIC CITY ENGINEERING STORMWATER PROPERTY
- = PUBLIC CITY PARK PROPERTY
- = PRIVATE OUTLOT
- = PHASE BOUNDARY

MARK	REVISION	DATE	BY

13219
MADISON, WI
8946
CONTRACT NO:

MAINTENANCE PLAN
603 SOUTH POINT ROAD - EDISON EXPANSION
M:\DESIGN\Projects\13219\CAD\Streets\13219EN-Maintenance.dwg



13219
MN-1