



Madison, Wisconsin

INDEX OF SHEETS

SHEET NO. D1-D2	NOTES AND DETAILS
SHEET NO. P1	STREET PLAN & PROFILES
SHEET NO. U1	UTILITY PLAN & PROFILES
SHEET NO. USAN	SANITARY SEWER SCHEDULE
SHEET NO. W1-W3	WATER PLANS
NO-MAINTENANCE PLAN	

# CITY OF MADISON

## CITY ENGINEERING DIVISION

### DEPARTMENT OF PUBLIC WORKS

# PLAN OF PROPOSED IMPROVEMENT

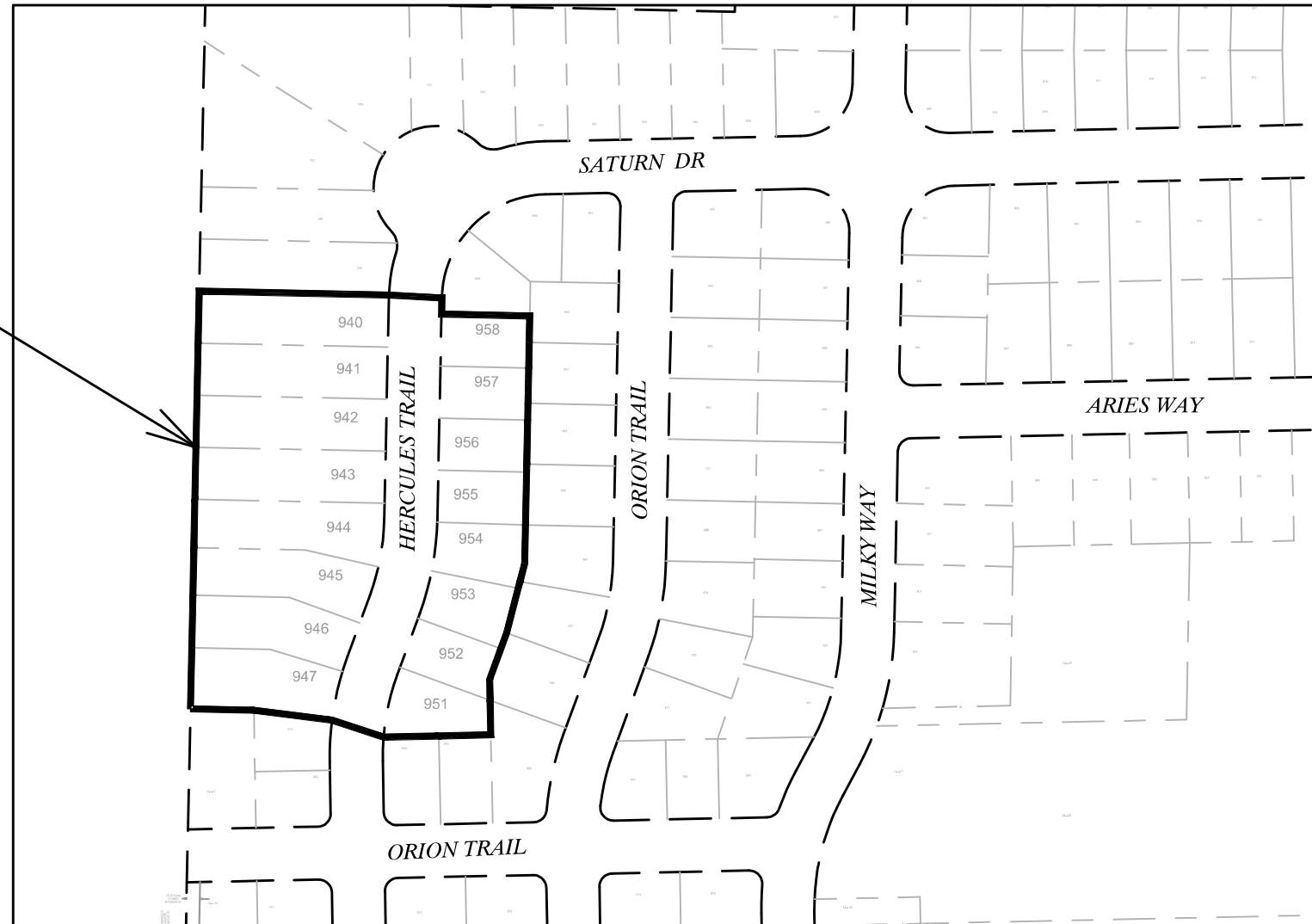
## NORTH ADDITION TO GRANDVIEW COMMONS

### PHASE 9

CITY PROJECT NO. 13300  
 CONTRACT NO. 8973



PROJECT LOCATION



PUBLIC IMPROVEMENT PROJECT APPROVED

MAY 15, 2021

BY THE COMMON COUNCIL OF MADISON, WISCONSIN

PUBLIC IMPROVEMENT DESIGN APPROVED BY:

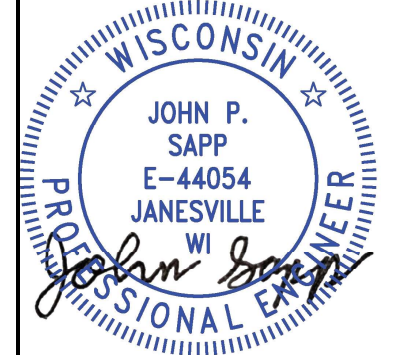
*W. Greg Fries*

Jul 26, 2021

City Engineer

Date

STREET DESIGNED BY:



Jul 26, 2021

SANITARY SEWER DESIGNED BY:



Jul 26, 2021

WATER DESIGNED BY:



Jul 26, 2021

PLOT SCALE: 1"=1' XREF

PLOT NAME: ---

REV. DATE: 7/26/2021 12:32 PM







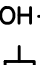


ORIGINATOR: CITY\_OF\_MADISON

ALL PROPOSED STREET TREE REMOVALS WITHIN THE RIGHT OF WAY SHALL BE REVIEWED BY CITY FORESTRY BEFORE THE PLAN COMMISSION MEETING. STREET TREE REMOVALS REQUIRE APPROVAL AND A TREE REMOVAL PERMIT ISSUED BY CITY FORESTRY. ANY STREET TREE REMOVALS REQUESTED AFTER THE DEVELOPMENT PLAN IS APPROVED BY THE PLAN COMMISSION OR THE BOARD OF PUBLIC WORKS AND CITY FORESTRY WILL REQUIRE A MINIMUM OF A 72-HOUR REVIEW PERIOD WHICH SHALL INCLUDE THE NOTIFICATION OF THE ALDERPERSON WITHIN WHO'S DISTRICT IS AFFECTED BY THE STREET TREE REMOVAL(S) PRIOR TO A TREE REMOVAL PERMIT BEING ISSUED.

AS DEFINED BY THE SECTION 107.13 OF CITY OF MADISON STANDARD SPECIFICATIONS FOR PUBLIC WORKS CONSTRUCTION: NO EXCAVATION IS PERMITTED WITHIN 5 FEET OF THE TRUNK OF THE STREET TREE OR WHEN CUTTING ROOTS OVER 3 INCHES IN DIAMETER. IF EXCAVATION IS NECESSARY, THE CONTRACTOR SHALL CONTACT MADISON CITY FORESTRY (266-4816) PRIOR TO EXCAVATION. CITY OF MADISON FORESTRY PERSONNEL SHALL ASSESS THE IMPACT TO THE TREE AND TO ITS ROOT SYSTEM PRIOR TO WORK COMMENCING. TREE PROTECTION SPECIFICATIONS CAN BE FOUND ON THE FOLLOWING WEBSITE: [HTTPS://WWW.CITYOFMADISON.COM/BUSINESS/PW/SPECS.CFM](https://www.cityofmadison.com/business/pw/specs.cfm)

DEVELOPER MUST SUBMIT A TRAFFIC CONTROL PLAN TO CITY TRAFFIC ENGINEERING AT LEAST 14 DAYS PRIOR TO THE START OF WORK. WORK SHALL NOT PROCEED UNTIL AN APPROVED TRAFFIC CONTROL PLAN IS IN PLACE.

CONTACT PROJECT ENGINEER AND STREET DESIGNER DAYENU SIMON AT [DSIMON@CITYOFMADISON.COM](mailto:DSIMON@CITYOFMADISON.COM) FOR CAD AND ALIGNMENT DATA PRIOR TO STAKING.

CONVENTIONAL SIGNS	
FIELD VERIFY ALL UTILITY LOCATIONS	
GAS	
STORM SEWER	
SANITARY SEWER	
WATER	
BURIED ELECTRIC	
OVERHEAD ELECTRIC	
POWER POLE	
ADA COMPLIANT RAMP W/ DETECTABLE WARNING FIELD	
COMBUSTIBLE FLUIDS	

ALL PAVEMENT IN THE HERCULES TRAIL SHALL BE TYPE B PAVEMENT PER STANDARD DETAIL DRAWING 4.02.

UNDERDRAINS SHALL BE INSTALLED PER STANDARD DETAIL DRAWING 4.05 FOR 75' ON EACH SIDE OF THE LOW POINT, OR TO THE NEAREST CURB HIGH POINT. ALL UNDERDRAIN SHALL BE WRAPPED.

ALL GUTTERS SHALL DRAIN WITH A MINIMUM GRADE OF 0.5% TOWARD STORM SEWER INLETS.

ALL DITCHES SHALL DRAIN WITH A MINIMUM GRADE OF 0.5%

THE CROSS SLOPE OF SIDEWALKS AND BARRIER FREE SIDEWALK CURB RAMPS SHALL TYPICALLY BE 1.5%. THE LONGITUDINAL GRADE OF BARRIER FREE SIDEWALK CURB RAMPS SHALL NOT EXCEED 8.33%. ALL SIDEWALK RAMPS SHALL BE CONSTRUCTED ACCORDING TO S.D.D. 3.04. AT ALL OTHER LOCATIONS THE LONGITUDINAL GRADE OF SIDEWALKS SHALL NOT BE LESS THAN 0.5% AND SHALL DRAIN TOWARD STORM SEWER INLETS. ALL SIDEWALK AND SIDEWALK RAMP ELEVATIONS AND GRADES SHALL BE FIELD VERIFIED AND SET TO COMPLY WITH THE CITY OF MADISON STANDARD SPECIFICATIONS AND THE A.D.A. GUIDELINES.

CURB STATION AND OFFSETS SHALL BE TO THE **EDGE OF PAVEMENT** UNLESS OTHERWISE INDICATED. CURB ELEVATIONS SHALL BE TO THE **EDGE OF PAVEMENT** UNLESS OTHERWISE INDICATED.

POWER POLES AND OTHER OBSTRUCTIONS SHALL BE MOVED TO PROVIDE 2 FEET MINIMUM OF CLEAR DISTANCE FROM ANY FACE OF CURB OR EDGE OF SIDEWALK.

ANY INFORMATION SHOWN ON THIS PLAN, WHICH IS NOT PART OF THIS RIGHT-OF-WAY PROJECT, IS PRELIMINARY AND NOT FOR CONSTRUCTION.

THERE MAY BE EXISTING UTILITIES OR OTHER FEATURES WHICH ARE EITHER NOT SHOWN OR SHOWN INCORRECTLY ON THIS PLAN. IT IS THE RESPONSIBILITY OF THE DEVELOPER TO LOCATE AND IDENTIFY ALL UTILITIES AND TOPOGRAPHY WHICH MAY AFFECT THE CONSTRUCTION OF THESE IMPROVEMENTS.

ALL PERMANENT SIGNING AND POSTING WILL BE DETERMINED AND PROVIDED BY THE TRAFFIC ENGINEERING DIVISION, FOLLOWING CONSTRUCTION OF THESE IMPROVEMENTS.

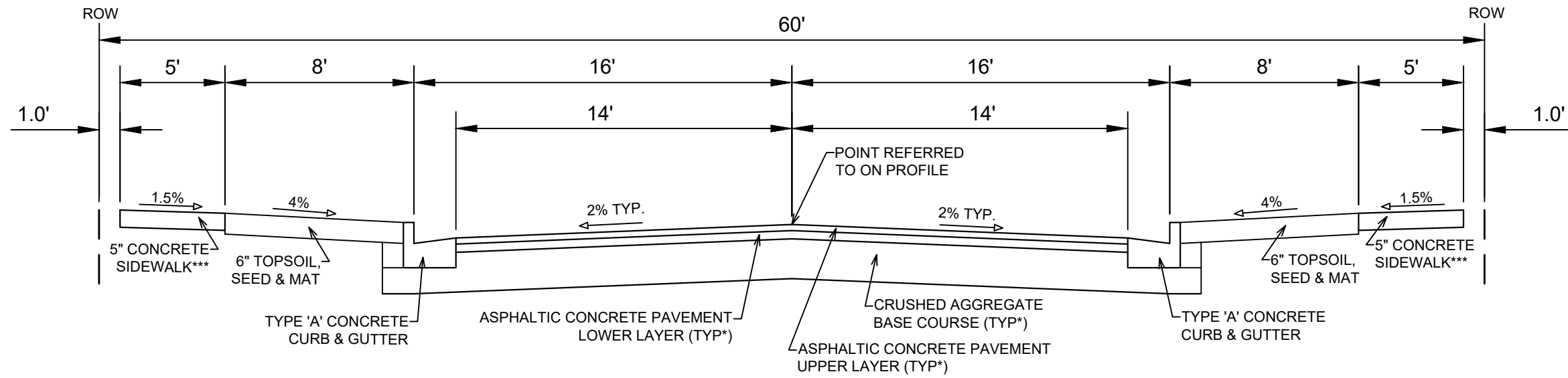
THE DEVELOPER SHALL PROVIDE, INSTALL AND MAINTAIN ALL STREET END BARRICADES, SIGNING AND TRAFFIC CONTROL, AS REQUIRED BY THE CITY TRAFFIC ENGINEER.

PAVEMENT SAWCUTS SHALL BE AS DIRECTED BY THE CITY CONSTRUCTION ENGINEER. SAWCUTS SHOWN ON THE PLAN ARE APPROXIMATE.

ALL WORK IN THE RIGHT OF WAY AND PUBLIC EASEMENTS SHALL BE IN ACCORDANCE WITH THE CITY OF MADISON STANDARD SPECIFICATIONS FOR PUBLIC WORKS CONSTRUCTION

DATE	BY
REVISION	DATE
7/14/2021 7:06 AM	Scale: #####
13300	D-1

13300  
MADISON, WI  
8973  
CONTRACT NO:  
13300  
GENERAL NOTES  
NORTH ADDITION TO GRANDVIEW COMMONS PHASE 9  
M:\DESIGN\Projects\13300\CAD\Streets\13300EN-Details.dwg



**TYPICAL SECTION**  
HERCULES TRAIL  
NOT TO SCALE

NOTES:

\* HERCULES TRAIL SHALL BE CONSTRUCTED AS TYPE 'B' PAVEMENT PER CITY OF MADISON MINIMUM PAVEMENT DESIGN †

\*\* SEE PLAN FOR DETAILS AND DIMENSIONS

\*\*\* INSTALL 2" OF SELECT FILL AS BASE FOR SIDEWALK. WHEN STREET GRADE EXCEEDS 5% INSTALL 3" OF GRADATION NO. 3.

-THE DEVELOPER SHALL BE RESPONSIBLE FOR SURFACE PAVING ALL OF HERCULES TRAIL

CITY OF MADISON MINIMUM PAVEMENT DESIGN †

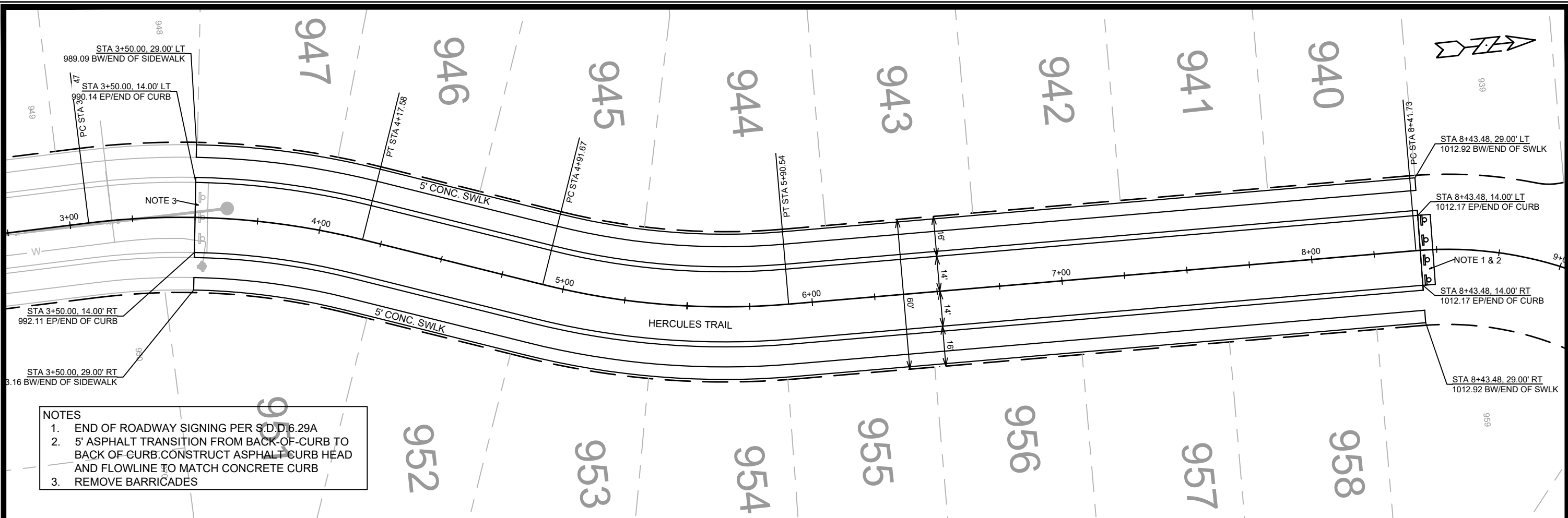
TYPE	CRUSHED AGGREGATE BASE COURSE		ASPHALTIC CONCRETE PAVEMENT			
	LOWER LAYER GRADATION 1	UPPER LAYER GRADATION 2	LOWER LAYER		UPPER LAYER	
			TYPE	THICKNESS	TYPE	THICKNESS
A	6"	6"	4 LT 58-28 S	1.75"	4 LT 58-28 S	1.75"
B	6"	6"	3 LT 58-28 S	2.50"	4 LT 58-28 S	2.00"
C	6"	6"	3 MT 58-28 S/H	3.50"	4 MT 58-28 S/H	2.00"

MARK	REVISION	DATE	BY
13300	7/26/2021 11:01 PM		
Designed By: AJC	Scale: #####		D-2

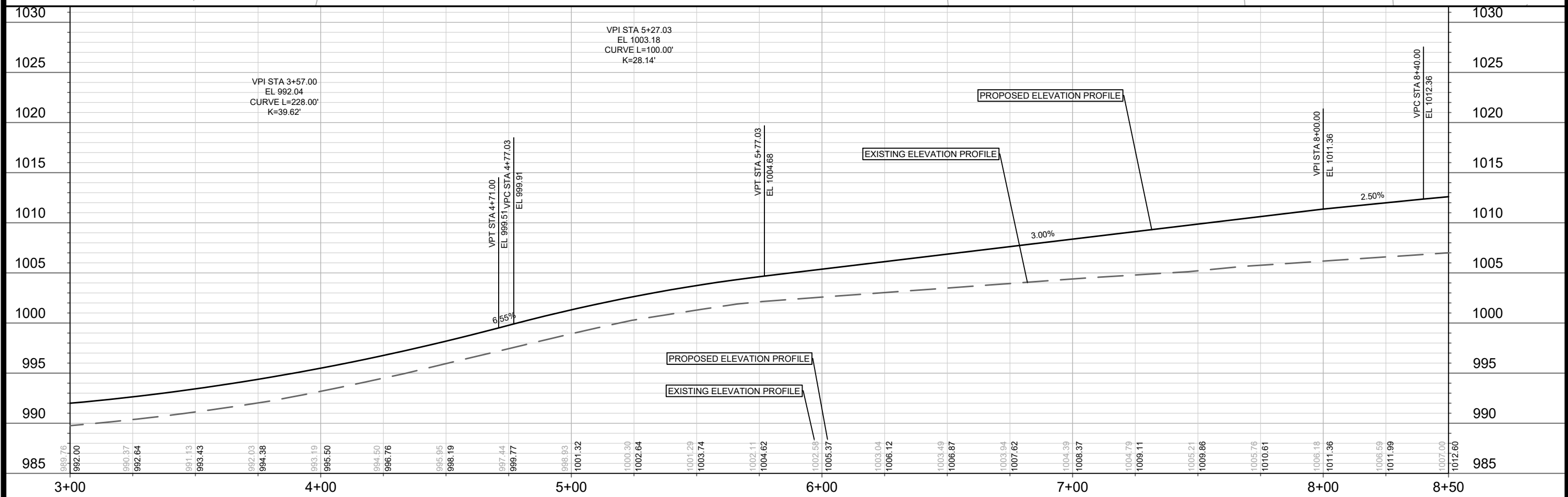
13300  
 MADISON, WI  
 NORTH ADDITION TO GRANDVIEW COMMONS PHASE 9  
 CONTRACT NO: 8973  
 M:\DESIGN\Projects\13300\CAD\Streets\13300EN-Details.dwg



13300  
D-2



- NOTES**
1. END OF ROADWAY SIGNING PER S.D.D. 6.29A
  2. 5' ASPHALT TRANSITION FROM BACK-OF-CURB TO BACK-OF-CURB. CONSTRUCT ASPHALT CURB HEAD AND FLOWLINE TO MATCH CONCRETE CURB
  3. REMOVE BARRICADES

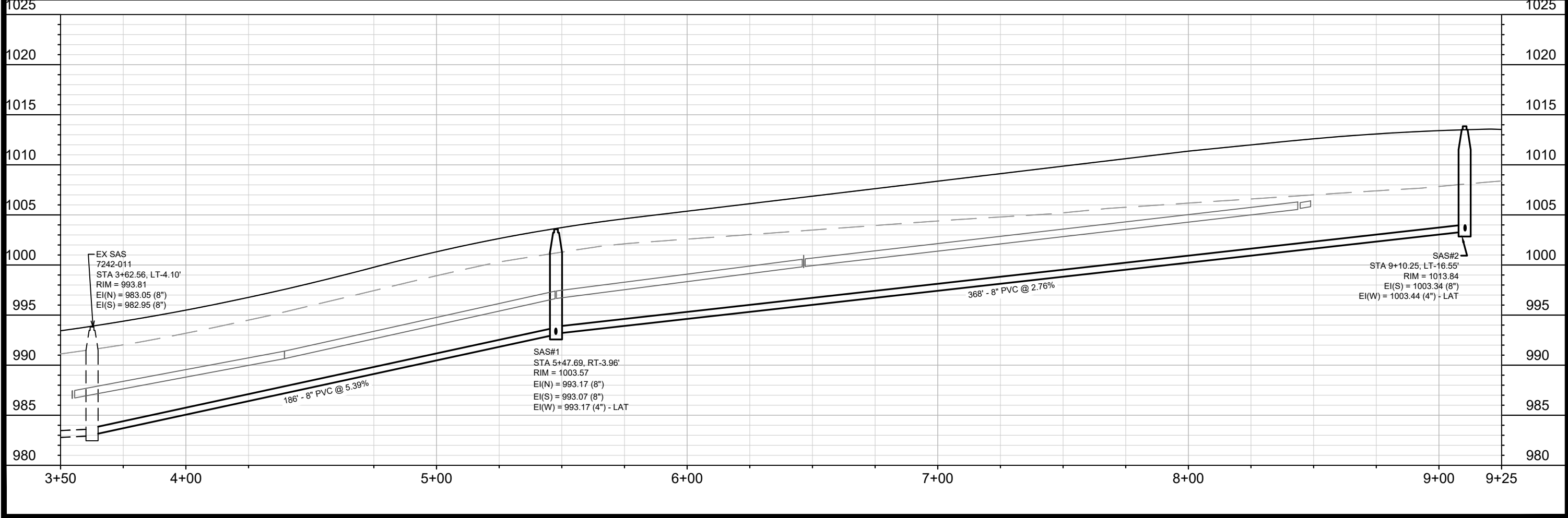
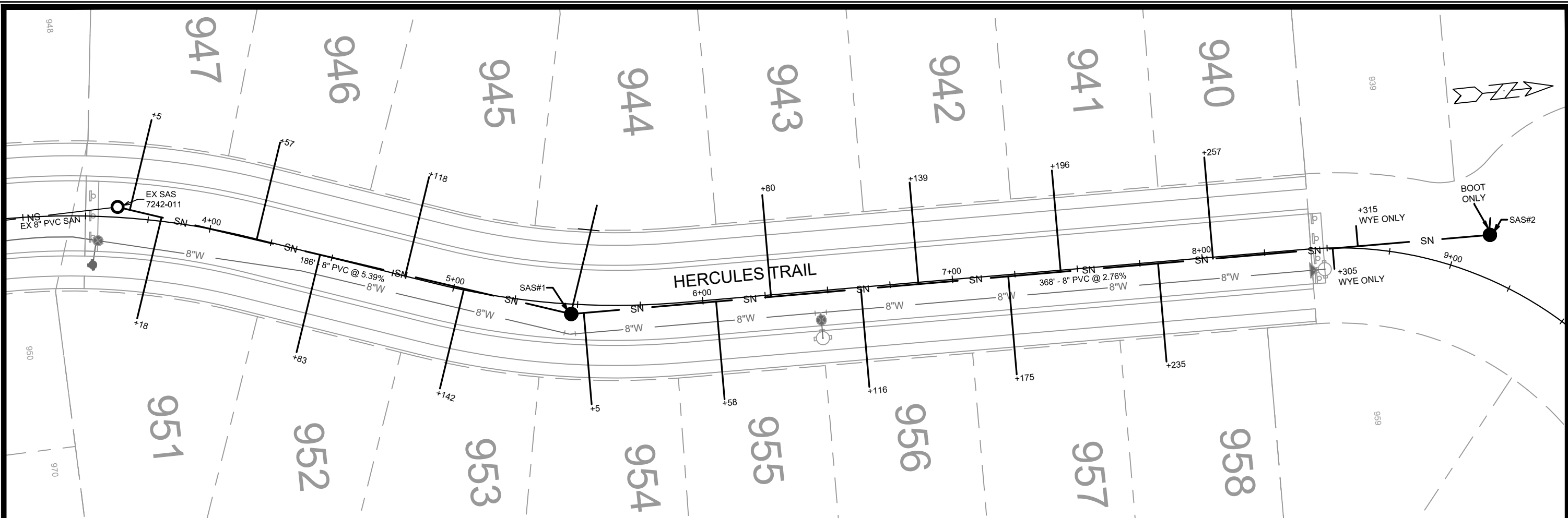


DATE	BY
REVISION	DATE
MARK	DESIGNED BY: ###
13300	Scale: #####
13300	Date: 7/13/2021 1:48 PM

13300  
MADISON, WI  
CONTRACT NO: 8973

STREET PLAN & PROFILE  
NORTH ADD. TO GRANDVIEW COMMONS: PHASE 9  
M:\DESIGN\Projects\13300\CAD\Streets\13300EN-PnP.dwg

13300  
P-1



##	##	##	##	##	##
##	##	##	##	##	##
##	##	##	##	##	##
##	##	##	##	##	##
##	##	##	##	##	##
##	##	##	##	##	##
##	##	##	##	##	##
##	##	##	##	##	##
##	##	##	##	##	##
##	##	##	##	##	##
##	##	##	##	##	##
##	##	##	##	##	##

13300

13300

13300

MADISON, WI

CONTRACT NO: 8973

HERCULES TRAIL - SANITARY SEWER SUBMITTAL

NORTH ADDITION TO GRANDVIEW COMMONS PHASE 9

M:\DESIGN\Projects\13300\CAD\Sewers\13300SWR-PipeNetwork.dwg

13300

U-1

U-1

# SANITARY SEWER SCHEDULE

NORTH ADD TO GRANDVIEW COMMONS PH 9	SHEET NO.
PROJECT NO. 13300	U-SAN
SANITARY SEWER SCHEDULE	
CITY OF MADISON	

## PROPOSED SANITARY

SAS NO.	STATION	LOCATION (OFFSET)	TOP OF CASTING	E.I.	DEPTH (FT)	NOTES
---------	---------	-------------------	----------------	------	------------	-------

### HERCULES TRAIL

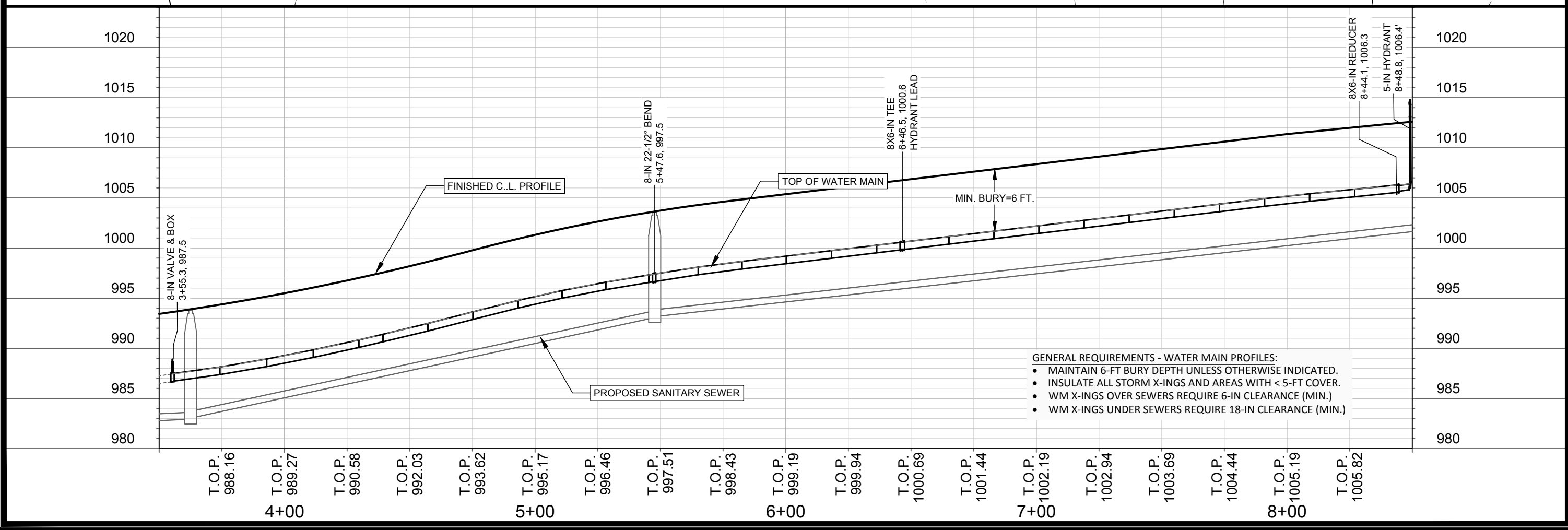
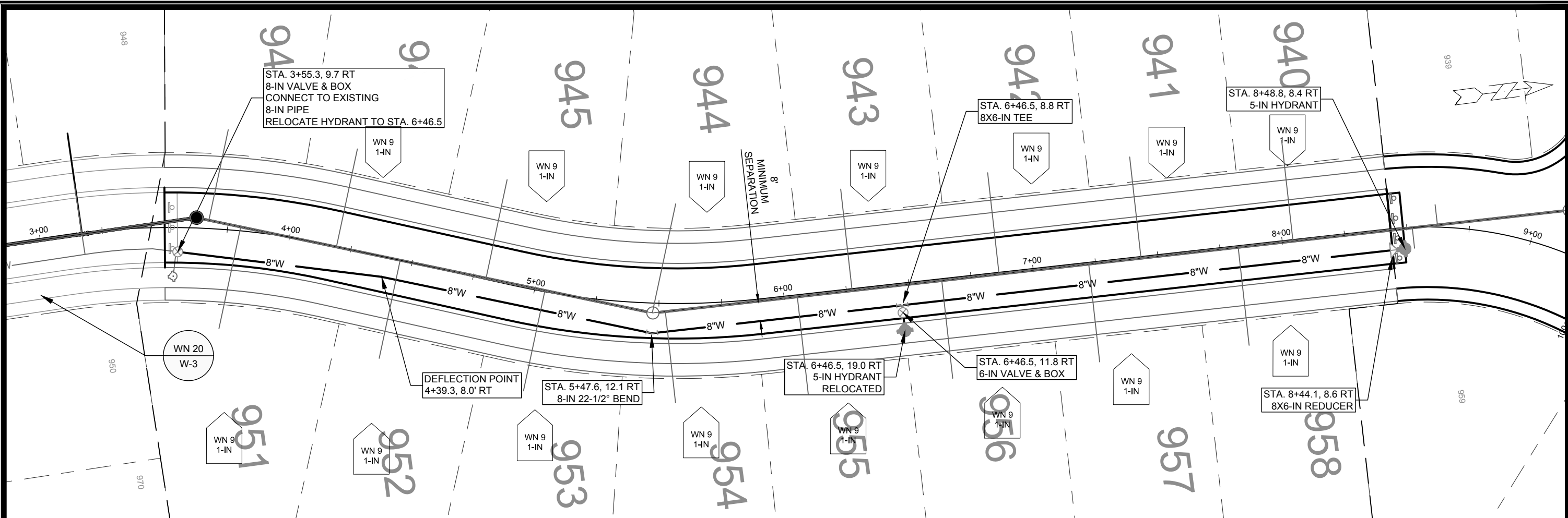
SAS#1	5+47.69	RT-3.96	1003.57	993.07	10.50	
SAS#2	9+10.25	LT-16.55	1013.84	1003.34	10.50	

## PROPOSED SANITARY PIPES

FROM (DNSTM)	TO (UPSTM)	DWNSTRM E.I.	UPSTRM E.I.	PLAN LGTH (FT)	SLOPE (%)	PIPE SIZE	PVC TYPE	NOTES
EX 7242-011	SAS#1	983.05	993.07	186	5.39%	8"	SDR-35	-
SAS#1	SAS#2	993.17	1003.34	368	2.76%	8"	SDR-35	-

## NOTES:

- ALL STRUCTURES SHALL BE SUBMITTED TO CITY ENGINEERING FOR APPROVAL. CONTACT ELIA E ACOSTA OF CITY ENGINEERING AT (608) 266-4096 FOR PRECAST APPROVALS, FAX SHOP DRAWINGS TO (608)264-9275, OR EMAIL SHOP DRAWINGS TO EACOSTA@CITYOFMADISON.COM.



- GENERAL REQUIREMENTS - WATER MAIN PROFILES:**
- MAINTAIN 6-FT BURY DEPTH UNLESS OTHERWISE INDICATED.
  - INSULATE ALL STORM X-INGS AND AREAS WITH < 5-FT COVER.
  - WM X-INGS OVER SEWERS REQUIRE 6-IN CLEARANCE (MIN.)
  - WM X-INGS UNDER SEWERS REQUIRE 18-IN CLEARANCE (MIN.)

SCALE: 1" = 40'  
 DESIGNED BY: DAR  
 MADISON WATER UTILITY  
 119 E OLIN AVE, MADISON, WI 53713  
 PRINTING DATE: 6/28/21

CONTRACT NO: 8973

NORTH ADD. TO GRANDVIEW COMMONS: PHASE 9  
 WATER PLAN & PROFILE HERCULES TR  
 CITY OF MADISON, WISCONSIN



13300  
 W-1



**CONSTRUCTION NOTES:**

1. CONSTRUCT NEW WATER MAIN 6.0' BELOW FINISHED GRADE, UNLESS OTHERWISE NOTED. INSULATE MAIN WITH POLYSTYRENE BOARD AT UTILITY CROSSINGS OR OTHER AREAS IDENTIFIED BY ENGINEER AS HAVING INADEQUATE COVER.
2. VERIFY SIZE OF EXISTING WATER SERVICES AND RECONNECT SERVICES AS INDICATED.
3. MINIMIZE DISRUPTION OF SERVICE TO CUSTOMERS. NOTIFY PER CONTRACT REQUIREMENTS OF ANY PLANNED WATER OUTAGE.
4. THE EXISTING UTILITIES SHOWN ON THIS REPRESENT THE BEST INFORMATION AVAILABLE TO THE WATER UTILITY AT THE TIME OF PLAN REPARATION. CONTRACTOR IS RESPONSIBLE OR HAVING EACH UTILITY LOCATED PRIOR TO COMMENCING WORK.

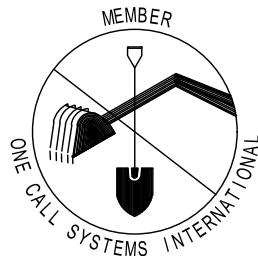
- WN1 REPLACE THE EXISTING LEAD SERVICE WITH A NEW COPPER SERVICE.
- WN-2 EXTEND AND RECONNECT THE EXISTING COPPER SERVICE TO THE NEW WATER MAIN.
- WN-3 EXISTING SERVICE TO BE ABANDONED WHEN THE WATER MAIN IS CUT OFF.
- WN-4 DISCONNECT FROM THE OLD WATER MAIN AND RECONNECT THE EXISTING COPPER WATER SERVICE LATERAL TO THE NEW WATER MAIN.
- WN-5 RELOCATE THE EXISTING FIRE HYDRANT.
- WN-6 ABANDON WATER VALVE ACCESS STRUCTURE.
- WN-7 FURNISH AND INSTALL THE NEW TOP SECTION FOR THE WATER ACCESS STRUCTURE.
- WN-8 ABANDON THE VALVE BOX.
- WN-9 FURNISH THE DITCH, COMPACTION, AND ALL MATERIALS AND LABOR FOR THE INSTALLATION OF NEW SERVICE LATERAL.
- WN-10 REMOVE AND SALVAGE EXISTING HYDRANT
- WN-11 REPLACE THE EXISTING COPPER SERVICE WITH A COPPER SERVICE
- WN-20+ SEE WATER IMPACT PLAN FOR CONNECTION POINT ISOLATION AND WATER SHUT-OFF NOTIFICATION INFORMATION.

*ESTIMATE OF MATERIALS SUPPLIED BY CONTRACTOR:			
PAY_ITEM_ID	DESCRIPTION	QUANTITY	UNIT
70002	FURNISH AND INSTALL 6-INCH PIPE & FITTINGS	11.22	LNFT
70003	FURNISH AND INSTALL 8-INCH PIPE & FITTINGS	489.86	LNFT
70031	FURNISH AND INSTALL 6-INCH WATER VALVE	1	EACH
70032	FURNISH AND INSTALL 8-INCH WATER VALVE	1	EACH
70040	FURNISH INSTALL AND SALVAGE HYDRANT	1	EACH
70041	RELOCATE HYDRANT	1	EACH
70050	FURNISH AND INSTALL 1-INCH SERVICE LATERALS	16	EACH
71135	8-IN 22-1/2° BEND	1	EACH
71159	8X6-IN REDUCER	1	EACH
71210	8X6-IN TEE	1	EACH
*ESTIMATE OF MATERIALS SUPPLIED BY WATER UTILITY:			
*ESTIMATE OF MATERIALS SALVAGED:			

\* ESTIMATE OF MATERIALS IS FOR INFORMATION ONLY. ENGINEER DOES NOT GUARANTEE ACCURACY OF MATERIAL TAKE-OFF.

TO OBTAIN LOCATION OF PARTICIPANTS' UNDERGROUND FACILITIES BEFORE YOU DIG IN WISCONSIN  
 CALL DIGGERS HOTLINE  
 TOLL FREE  
 811 OR 1-800-242-8511  
 FAX-A-LOCATE 1-800-338-3860  
 TDD (FOR HEARING IMPAIRED) 1-800-542-2289

WIS. STATUTE 182.0175 (1974)  
 REQUIRES MIN. OF 3 WORK DAYS  
 NOTICE BEFORE YOU EXCAVATE.

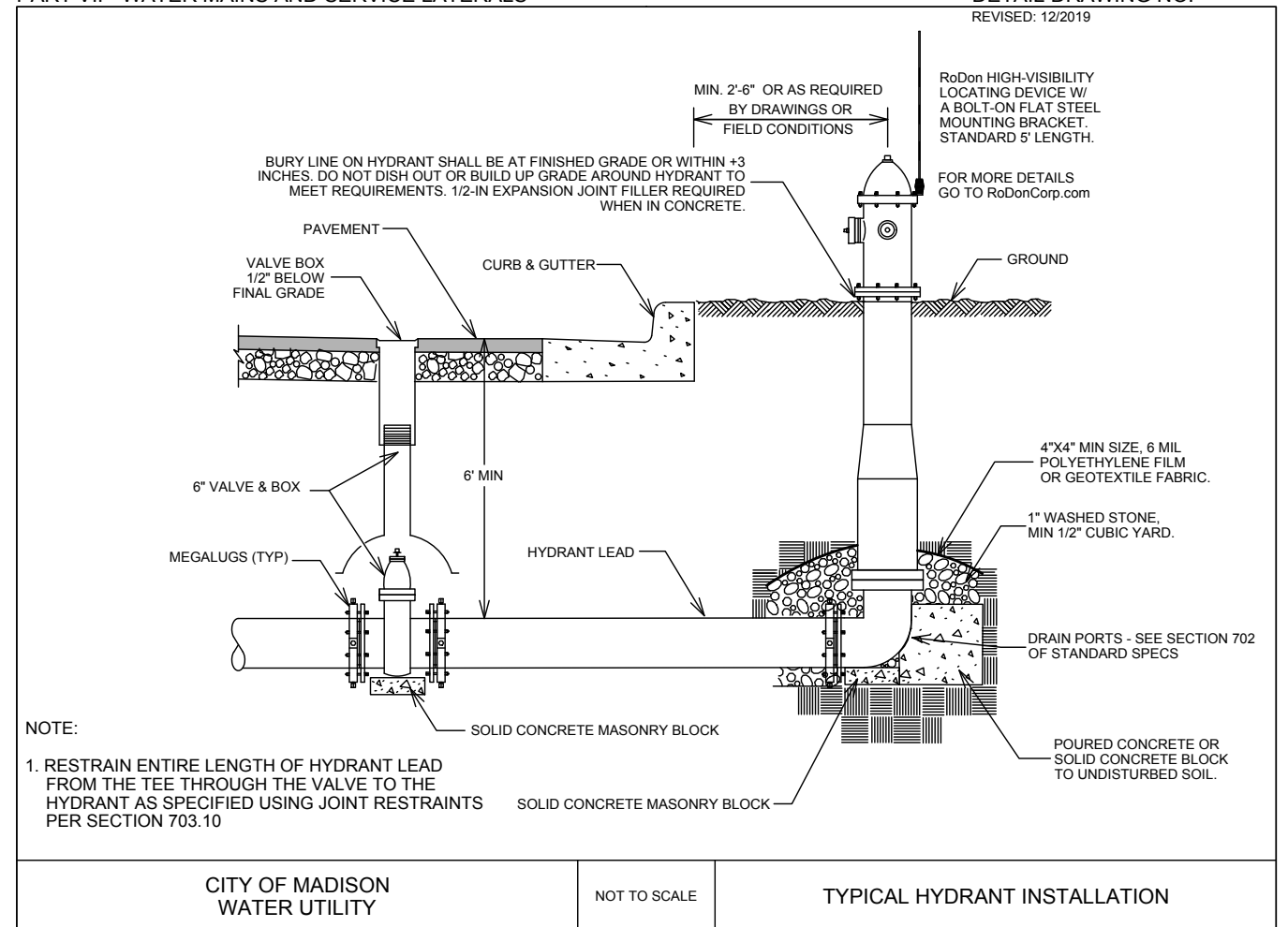


DISCLAIMER NOTE: UTILITY LOCATIONS SHOWN ARE APPROXIMATE ONLY. IT SHALL BE THE CONTRACTOR'S RESPONSIBILITY TO DETERMINE THE EXACT HORIZONTAL AND VERTICAL LOCATION OF ALL EXISTING UNDERGROUND AND OVERHEAD UTILITIES PRIOR TO COMMENCING WORK.

**PART VII - WATER MAINS AND SERVICE LATERALS**

**DETAIL DRAWING NO. 7.04**

REVISED: 12/2019



NORTH ADD. TO GRANDVIEW COMMONS: PHASE 9  
 ESTIMATE OF WATER MATERIALS

CITY OF MADISON, WISCONSIN



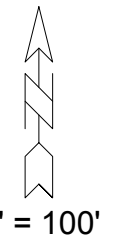
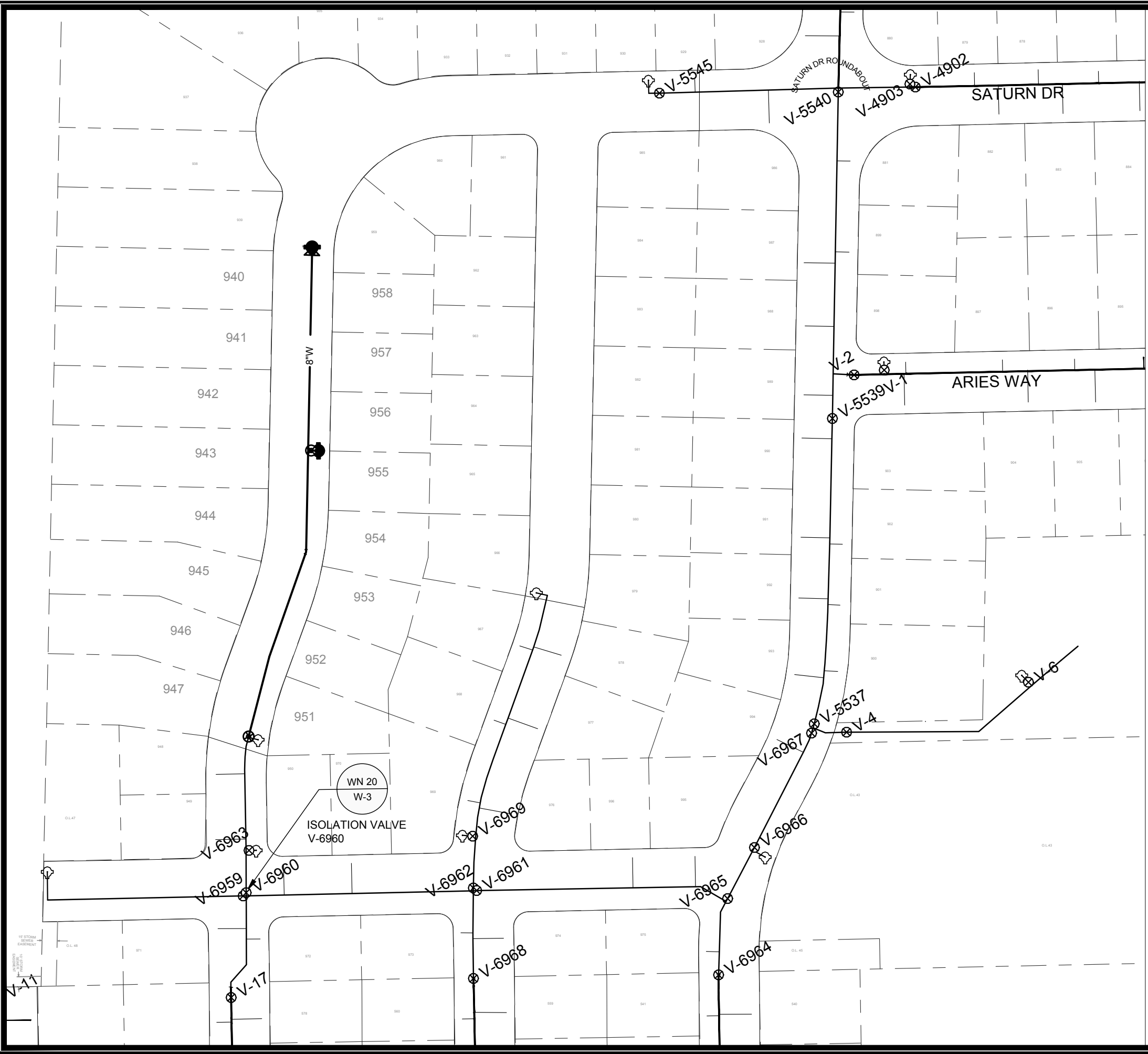
13300  
 W-2

SCALE: N.T.S.  
 DESIGNED BY: DAR  
 MADISON WATER UTILITY  
 119 E OLIN AVE, MADISON, WI 53713  
 PRINTING DATE: 6/28/21

CONTRACT NO: 8973

M:\DESIGN\PROJECTS\13300\CAD\WATER\13300 MATERIALS.DWG





DISCLAIMER NOTE:  
 THE WATER IMPACT PLAN IS PROVIDED FOR REFERENCE PURPOSES  
 TO AID PLANNING CONNECTION POINT ISOLATION AND PREPARING  
 NOTIFICATION LISTS DURING PLANNED OUTAGES. REQUEST ANY  
 ALTERNATIVE CONNECTION METHODS IN WRITING, PER SPECS.

SCALE: 1" = 100'  
 DESIGNED BY: DAR  
 MADISON WATER UTILITY  
 119 E OLIN AVE, MADISON, WI 53713  
 PRINTING DATE: 6/28/21

NORTH ADD. TO GRANDVIEW COMMONS: PHASE 9  
 WATER IMPACT PLAN  
**CITY OF MADISON, WISCONSIN**  
 CONTRACT NO: 8973



13300  
 W-3