



Madison, Wisconsin

# CITY OF MADISON

## CITY ENGINEERING DIVISION

### DEPARTMENT OF PUBLIC WORKS

# PLAN OF PROPOSED IMPROVEMENT

## 5909 SHARPSBURG DRIVE

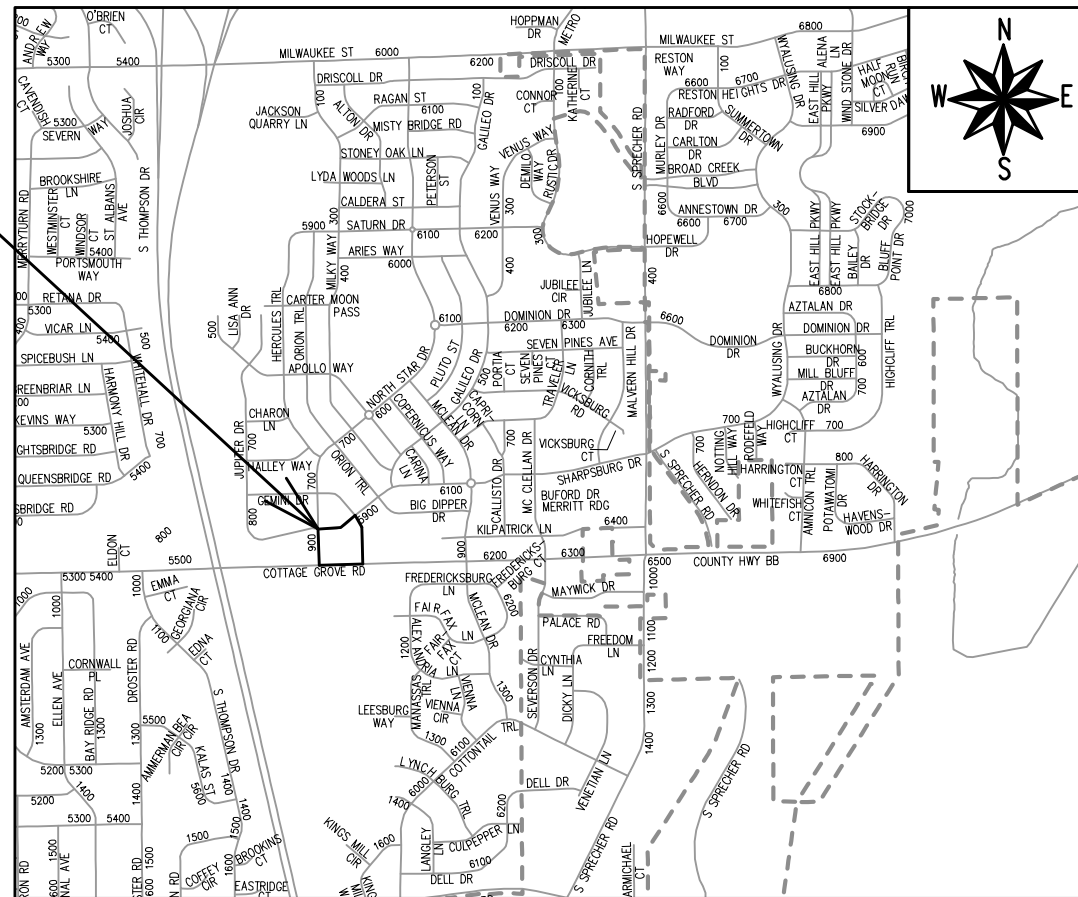
#### INDEX OF SHEETS

SHEET NO.	NOTES AND DETAILS
D1-D3	NOTES AND DETAILS
M-1	MARKING PLAN
P1-P4	SIDEWALK PLAN & PROFILES
U1	UTILITY PLAN & PROFILES
L-1	LANDSCAPING PLAN
MN-1	MAINTENANCE PLAN

REVISED 8/5/22 BY IO

CITY PROJECT NO. 13339  
CONTRACT NO. 9000

PROJECT  
LOCATION



PUBLIC IMPROVEMENT PROJECT  
APPROVED

DECEMBER 1, 2020

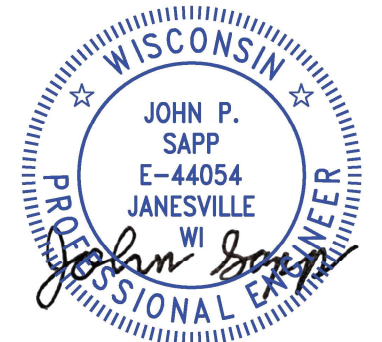
BY THE COMMON COUNCIL  
OF MADISON, WISCONSIN

PUBLIC IMPROVEMENT DESIGN  
APPROVED BY:

*Greg Fries* Oct 18, 2021

City Engineer Date

STREET GRADES  
DESIGNED BY:



Oct 18, 2021

STREET GEOMETRY & PAVEMENT  
MARKINGS DESIGNED BY:



Oct 18, 2021

PLOT SCALE: 1:1\_XREF

PLOT NAME: ---

REV. DATE: 9/21/2021 3:07 PM

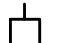


ORIGINATOR: CITY\_OF\_MADISON

ALL PROPOSED STREET TREE REMOVALS WITHIN THE RIGHT OF WAY SHALL BE REVIEWED BY CITY FORESTRY BEFORE THE PLAN COMMISSION MEETING. STREET TREE REMOVALS REQUIRE APPROVAL AND A TREE REMOVAL PERMIT ISSUED BY CITY FORESTRY. ANY STREET TREE REMOVALS REQUESTED AFTER THE DEVELOPMENT PLAN IS APPROVED BY THE PLAN COMMISSION OR THE BOARD OF PUBLIC WORKS AND CITY FORESTRY WILL REQUIRE A MINIMUM OF A 72-HOUR REVIEW PERIOD WHICH SHALL INCLUDE THE NOTIFICATION OF THE ALDERPERSON WITHIN WHO'S DISTRICT IS AFFECTED BY THE STREET TREE REMOVAL(S) PRIOR TO A TREE REMOVAL PERMIT BEING ISSUED.

AS DEFINED BY THE SECTION 107.13 OF CITY OF MADISON STANDARD SPECIFICATIONS FOR PUBLIC WORKS CONSTRUCTION: NO EXCAVATION IS PERMITTED WITHIN 5 FEET OF THE TRUNK OF THE STREET TREE OR WHEN CUTTING ROOTS OVER 3 INCHES IN DIAMETER. IF EXCAVATION IS NECESSARY, THE CONTRACTOR SHALL CONTACT MADISON CITY FORESTRY (266-4816) PRIOR TO EXCAVATION. CITY OF MADISON FORESTRY PERSONNEL SHALL ASSESS THE IMPACT TO THE TREE AND TO ITS ROOT SYSTEM PRIOR TO WORK COMMENCING. TREE PROTECTION SPECIFICATIONS CAN BE FOUND ON THE FOLLOWING WEBSITE: [HTTPS://WWW.CITYOFMADISON.COM/BUSINESS/PW/SPECS.CFM](https://www.cityofmadison.com/business/pw/specs.cfm)

DEVELOPER MUST SUBMIT A TRAFFIC CONTROL PLAN TO CITY TRAFFIC ENGINEERING AT LEAST 14 DAYS PRIOR TO THE START OF WORK. WORK SHALL NOT PROCEED UNTIL AN APPROVED TRAFFIC CONTROL PLAN IS IN PLACE.

CONTACT PROJECT ENGINEER AND STREET DESIGNER IKE OKAFOR AT [IOKAFOR@CITYOFMADISON.COM](mailto:IOKAFOR@CITYOFMADISON.COM) FOR CAD AND ALIGNMENT DATA PRIOR TO STAKING.

CONVENTIONAL SIGNS	
FIELD VERIFY ALL UTILITY LOCATIONS	
GAS	—— G ——
STORM SEWER	—— ST ——
SANITARY SEWER	—— SN ——
WATER	—— W ——
BURIED ELECTRIC	—— E ——
OVERHEAD ELECTRIC	—— OH ——
POWER POLE	
ADA COMPLIANT RAMP W/ DETECTABLE WARNING FIELD	
COMBUSTIBLE FLUIDS	

ALL PAVEMENT IN SHARPSBURG DRIVE RIGHT-OF-WAY SHALL BE TYPE A PAVEMENT PER STANDARD DETAIL DRAWING 4.02

UNDERDRAINS SHALL BE INSTALLED PER STANDARD DETAIL DRAWING 4.05 FOR 75' ON EACH SIDE OF THE LOW POINT, OR TO THE NEAREST CURB HIGH POINT. ALL UNDERDRAIN SHALL BE WRAPPED.

ALL GUTTERS SHALL DRAIN WITH A MINIMUM GRADE OF 0.5% TOWARD STORM SEWER INLETS.

ALL DITCHES SHALL DRAIN WITH A MINIMUM GRADE OF 0.5%

THE CROSS SLOPE OF SIDEWALKS AND BARRIER FREE SIDEWALK CURB RAMPS SHALL TYPICALLY BE 1.5%. THE LONGITUDINAL GRADE OF BARRIER FREE SIDEWALK CURB RAMPS SHALL NOT EXCEED 8.33%. ALL SIDEWALK RAMPS SHALL BE CONSTRUCTED ACCORDING TO S.D.D. 3.04. AT ALL OTHER LOCATIONS THE LONGITUDINAL GRADE OF SIDEWALKS SHALL NOT BE LESS THAN 0.5% AND SHALL DRAIN TOWARD STORM SEWER INLETS. ALL SIDEWALK AND SIDEWALK RAMP ELEVATIONS AND GRADES SHALL BE FIELD VERIFIED AND SET TO COMPLY WITH THE CITY OF MADISON STANDARD SPECIFICATIONS AND THE A.D.A. GUIDELINES.

CURB STATION AND OFFSETS SHALL BE TO THE EDGE OF PAVEMENT UNLESS OTHERWISE INDICATED. CURB ELEVATIONS SHALL BE TO THE EDGE OF PAVEMENT UNLESS OTHERWISE INDICATED.

POWER POLES AND OTHER OBSTRUCTIONS SHALL BE MOVED TO PROVIDE 2 FEET MINIMUM OF CLEAR DISTANCE FROM ANY FACE OF CURB OR EDGE OF SIDEWALK.

ANY INFORMATION SHOWN ON THIS PLAN, WHICH IS NOT PART OF THIS RIGHT-OF-WAY PROJECT, IS PRELIMINARY AND NOT FOR CONSTRUCTION.

THERE MAY BE EXISTING UTILITIES OR OTHER FEATURES WHICH ARE EITHER NOT SHOWN OR SHOWN INCORRECTLY ON THIS PLAN. IT IS THE RESPONSIBILITY OF THE DEVELOPER TO LOCATE AND IDENTIFY ALL UTILITIES AND TOPOGRAPHY WHICH MAY AFFECT THE CONSTRUCTION OF THESE IMPROVEMENTS.

ALL PERMANENT SIGNING AND POSTING WILL BE DETERMINED AND PROVIDED BY THE TRAFFIC ENGINEERING DIVISION, FOLLOWING CONSTRUCTION OF THESE IMPROVEMENTS.

THE DEVELOPER SHALL PROVIDE, INSTALL AND MAINTAIN ALL STREET END BARRICADES, SIGNING AND TRAFFIC CONTROL, AS REQUIRED BY THE CITY TRAFFIC ENGINEER.

PAVEMENT SAWCUTS SHALL BE AS DIRECTED BY THE CITY CONSTRUCTION ENGINEER. SAWCUTS SHOWN ON THE PLAN ARE APPROXIMATE.

ALL WORK IN THE RIGHT OF WAY AND PUBLIC EASEMENTS SHALL BE IN ACCORDANCE WITH THE CITY OF MADISON STANDARD SPECIFICATIONS FOR PUBLIC WORKS CONSTRUCTION

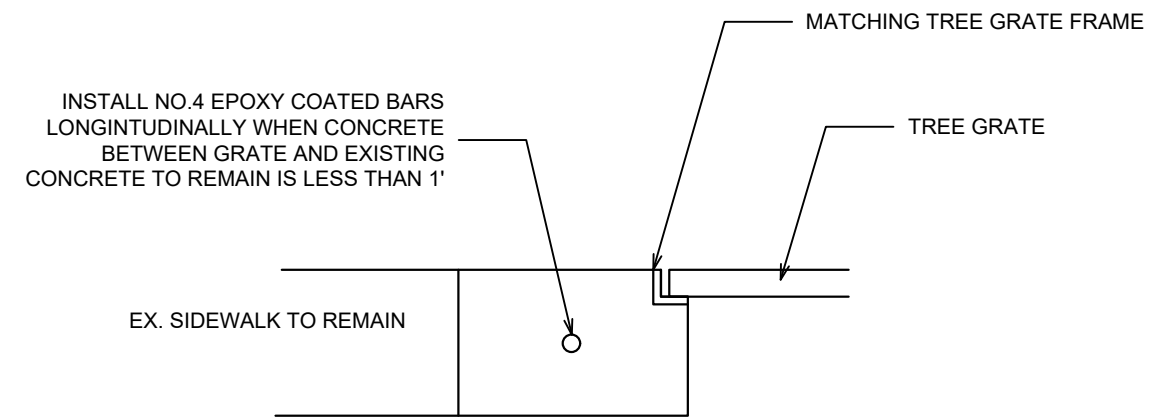
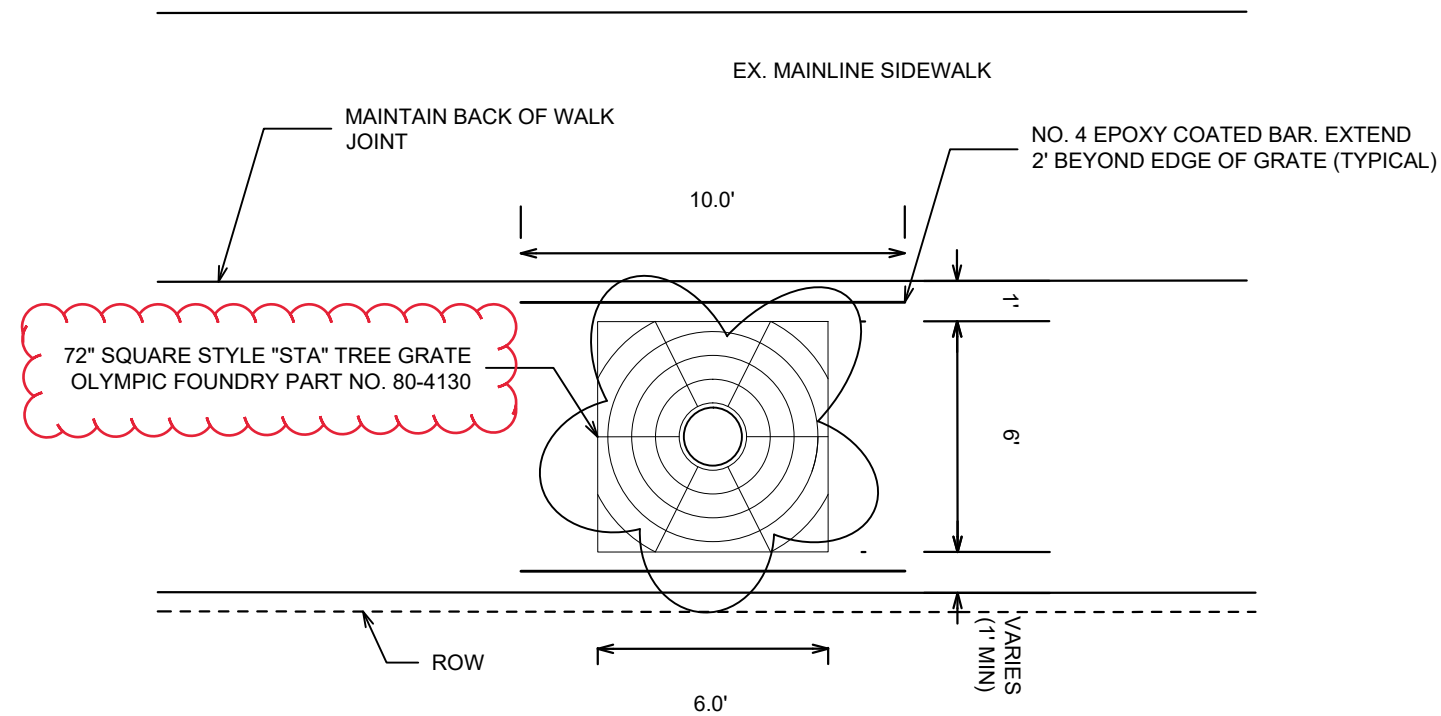
MARK	REVISION	DATE	BY
13339		06/20/2022 2:22 PM	
Designed By: IO	Scale: NTS		

13339  
MADISON, WI  
9000  
CONTRACT NO:

STANDARD NOTES  
5909 SHARPSBURG DRIVE  
M:\DESIGN\Projects\13339\CAD\Streets\13339EN-Details.dwg



## TREE GRATE INSTALLATION DETAIL NOT TO SCALE



REINFORCING FOR TREE GRATES WITHIN 1' OR  
LESS OF EXISTING CONCRETE SIDEWALK  
NOT TO SCALE

**NOTES:**

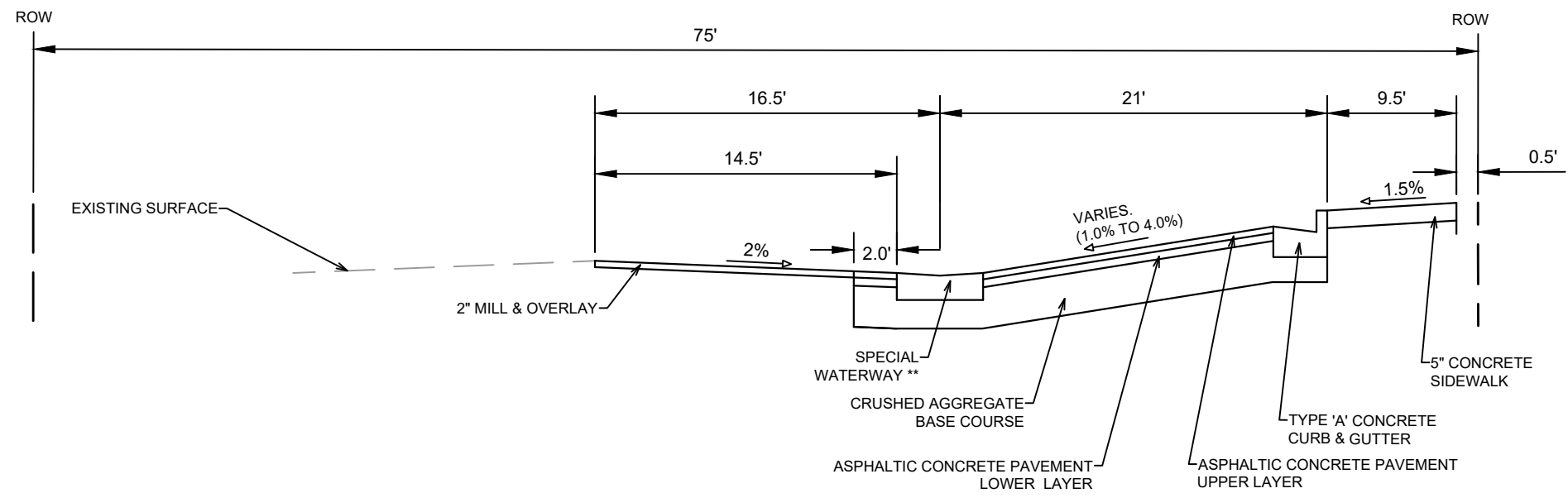
1. TREE GRATE LOCATION TO BE VERIFIED WITH CONSTRUCTION ENGINEER AND FORESTRY.
2. VERIFY JOINT PATTERN WITH CONSTRUCTION ENGINEER.
3. REFER TO S.D.D. 2.02 FOR STANDARD PLANTING TECHNIQUE FOR TREES IN TREE GRATES
4. NO LATER THAN FIVE BUSINESS DAYS PRIOR TO FORMING CONCRETE AND CONSTRUCTING TREE GRATE SITES, THE CONTRACTOR SHALL CONTACT CITY FORESTRY AT (608) 266-4816 TO IDENTIFY AND LOCATE UNDERGROUND CONFLICTS( UTILITIES, VAULTS,CONDUIT) OR OTHER UNDERGROUND OBSTRUCTIONS AND DETERMINE GRATE LOCATIONS

MARK	REVISION	DATE	BY
13339		8/5/2022 2:21 PM	NTS

13339  
MADISON, WI  
9000  
CONTRACT NO:

STANDARD DETAILS  
5909 SHARPSBURG DRIVE  
M:\DESIGN\Projects\13339\CAD\Streets\13339EN-Details.dwg





**TYPICAL SECTION**  
 SHARPSBURG DRIVE  
 STA 20+80 TO 21+89  
 NOT TO SCALE

**NOTES:**

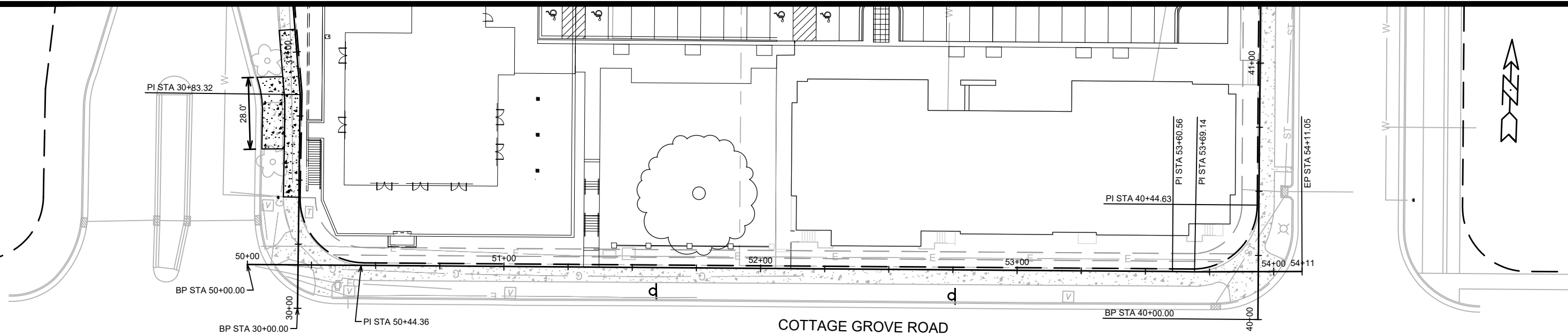
- \* SHARPSBURG DRIVE SHALL BE CONSTRUCTED AS TYPE 'A' PAVEMENT PER CITY OF MADISON MINIMUM PAVEMENT DESIGN
- \*\* SEE S.D.D. 3.01 FOR CONCRETE WATERWAY DETAIL AND REINFORCEMENT
- THE DEVELOPER SHALL BE RESPONSIBLE FOR SURFACE PAVING UNDER THE SAME CONSTRUCTION PROJECT NO.(13339)

CITY OF MADISON MINIMUM PAVEMENT DESIGN †

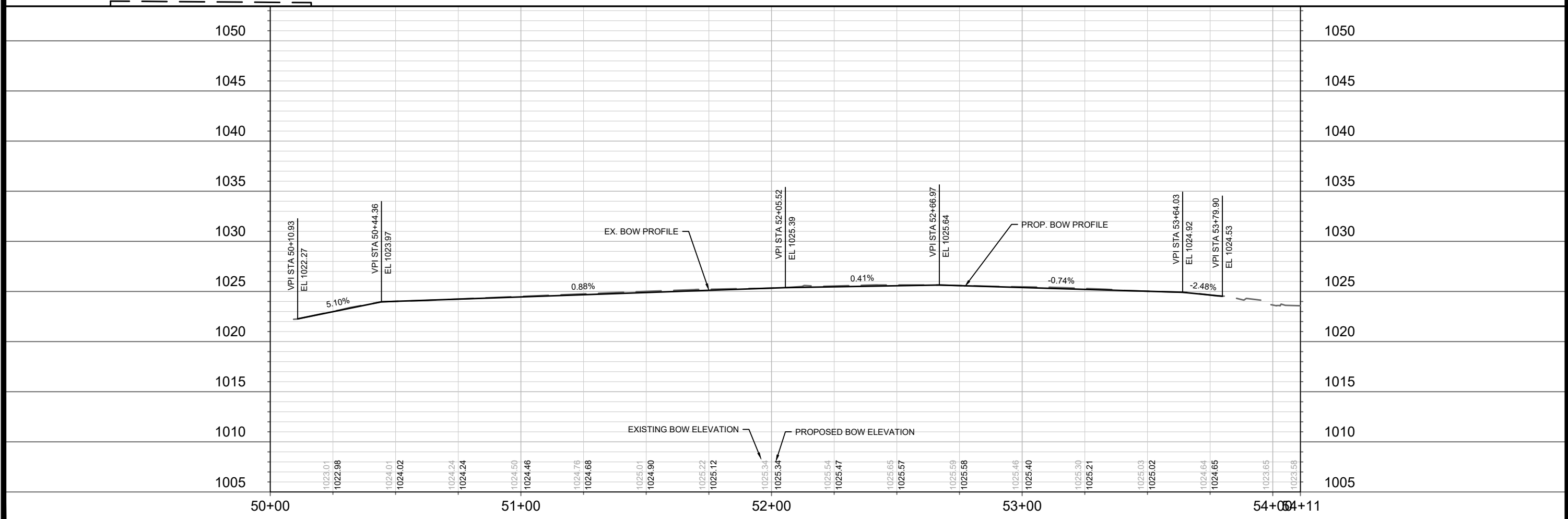
TYPE	CRUSHED AGGREGATE BASE COURSE		ASPHALTIC CONCRETE PAVEMENT			
	LOWER LAYER GRADATION 1	UPPER LAYER GRADATION 2	LOWER LAYER		UPPER LAYER	
			TYPE	THICKNESS	TYPE	THICKNESS
A	6"	6"	4 LT 58-28 S	1.75"	4 LT 58-28 S	1.75"
B	6"	6"	3 LT 58-28 S	2.50"	4 LT 58-28 S	2.00"
C	6"	6"	3 MT 58-28 S/H	3.50"	4 MT 58-28 S/H	2.00"

13339  
 MADISON, WI  
 CONTRACT NO: 9000  
 5909 SHARPSBURG DRIVE  
 M:\DESIGN\Projects\13339\CAD\Streets\13339EN-Details.dwg  
 13339  
 D-3

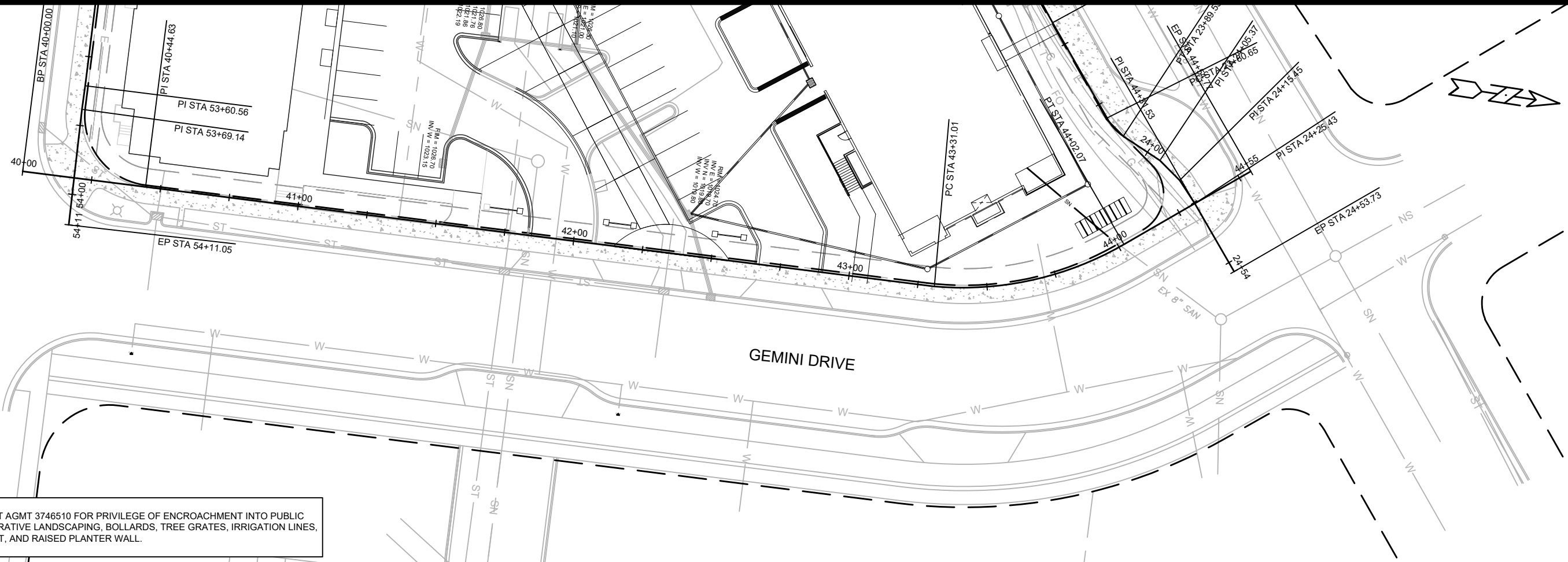




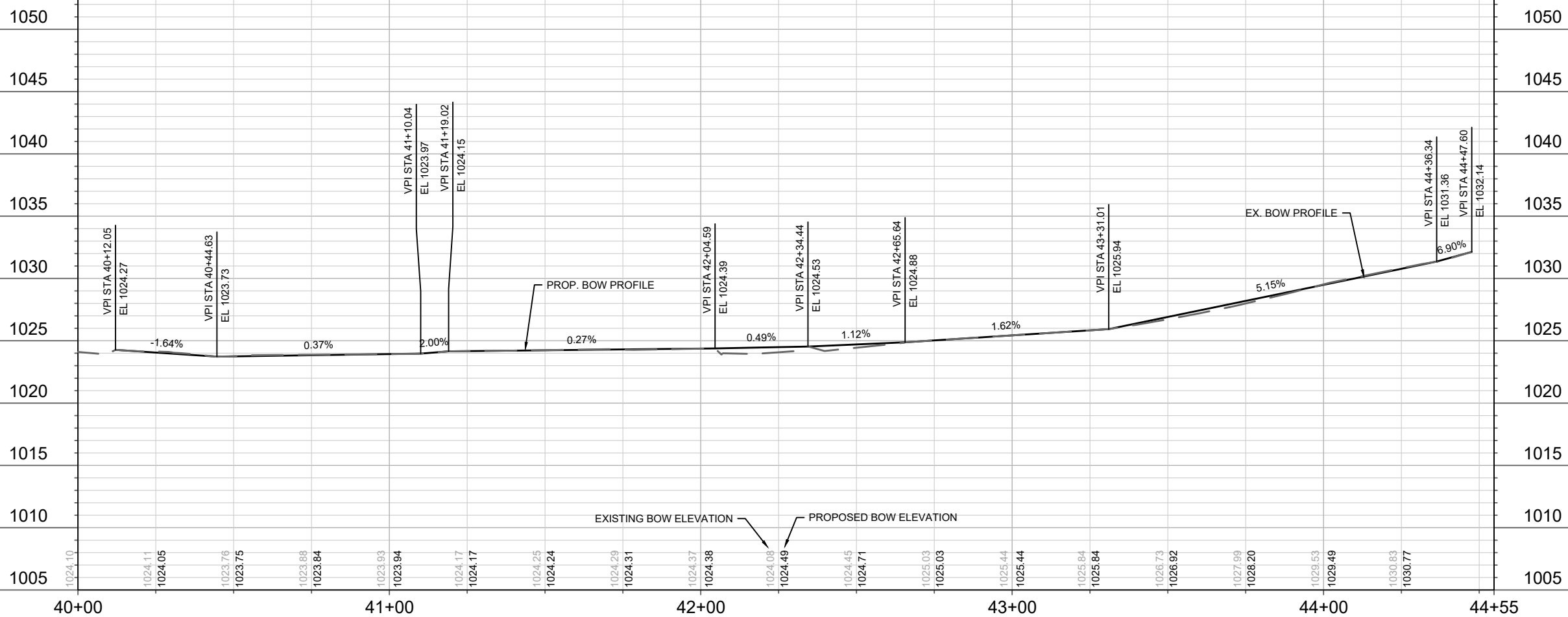
NOTES:  
 1. SEE ENCROACHMENT AGMT 3746510 FOR PRIVILEGE OF ENCROACHMENT INTO PUBLIC PROPERTY BY DECORATIVE LANDSCAPING, BOLLARDS, TREE GRATES, IRRIGATION LINES, ELECTRICAL CONDUIT, AND RAISED PLANTER WALL.



13339	13339	13339
MADISON, WI	9000	P-1
COTTAGE GROVE ROAD - PLAN & PROFILE		
5909 SHARPSBURG DRIVE		
M:\DESIGN\Projects\13339\CAD\Streets\13339EN-PnP.dwg		
13339		
P-1		



NOTES:  
 1. SEE ENCROACHMENT AGMT 3746510 FOR PRIVILEGE OF ENCROACHMENT INTO PUBLIC PROPERTY BY DECORATIVE LANDSCAPING, BOLLARDS, TREE GRATES, IRRIGATION LINES, ELECTRICAL CONDUIT, AND RAISED PLANTER WALL.



MARK	REVISION	DATE	BY
13339			
Designed By: ID	Date: 10/12/2021 10:46 AM	Scale: 1"=40'	P-2

13339  
 MADISON, WI  
 CONTRACT NO: 9000

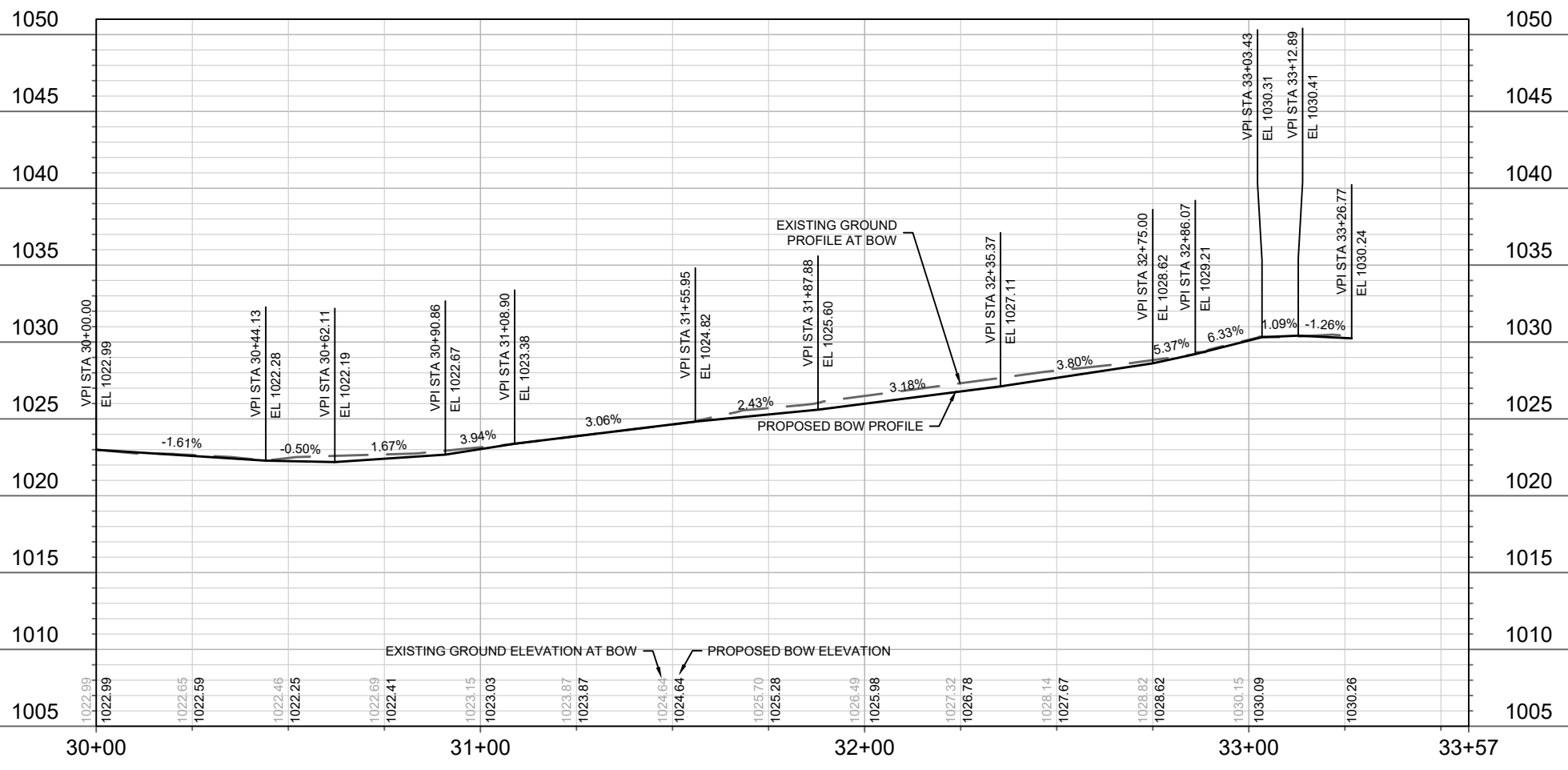
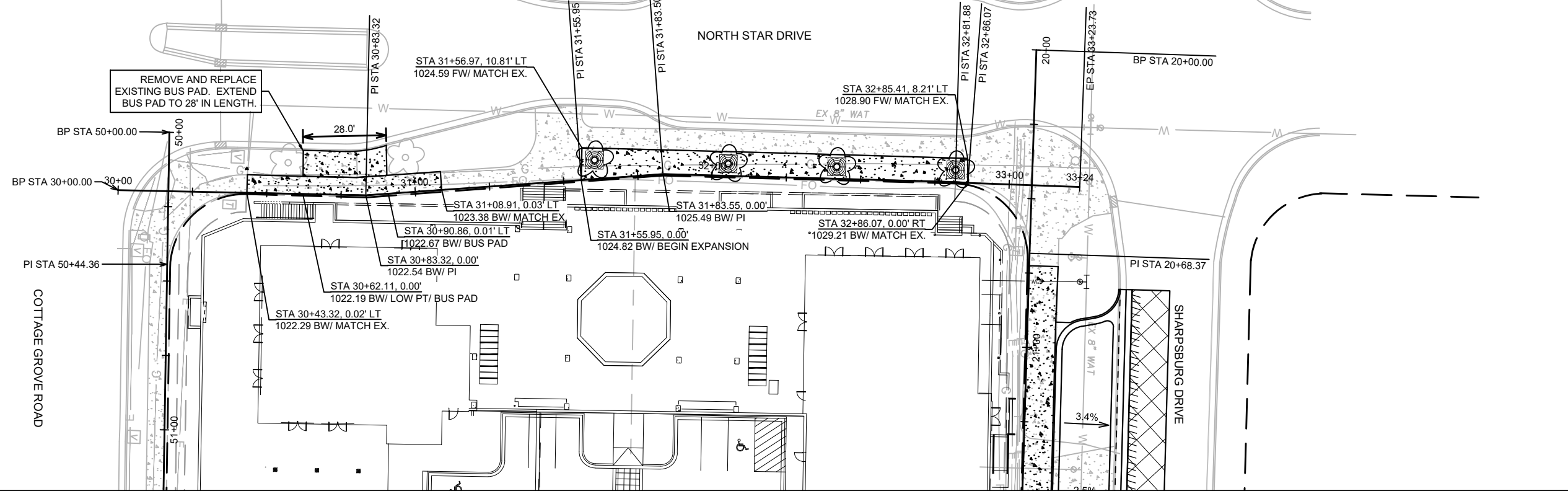
GEMINI DRIVE - PLAN & PROFILE  
 5909 SHARPSBURG DRIVE  
 M:\DESIGN\Projects\13339\CAD\Streets\13339EN-PnP.dwg



13339  
 P-2

NOTES:  
 1. SEE ENCROACHMENT AGMT 3746510 FOR PRIVILEGE OF ENCROACHMENT INTO PUBLIC PROPERTY BY DECORATIVE LANDSCAPING, BOLLARDS, TREE GRATES, IRRIGATION LINES, ELECTRICAL CONDUIT, AND RAISED PLANTER WALL.

LEGEND  
 [Symbol] - NEW 5" CONCRETE SURFACE



DATE	BY
REVISION	
MARK	
Designed By: IO	13339
Date: 10/12/2021 10:48 AM	
Scale: 1:40	
P-3	

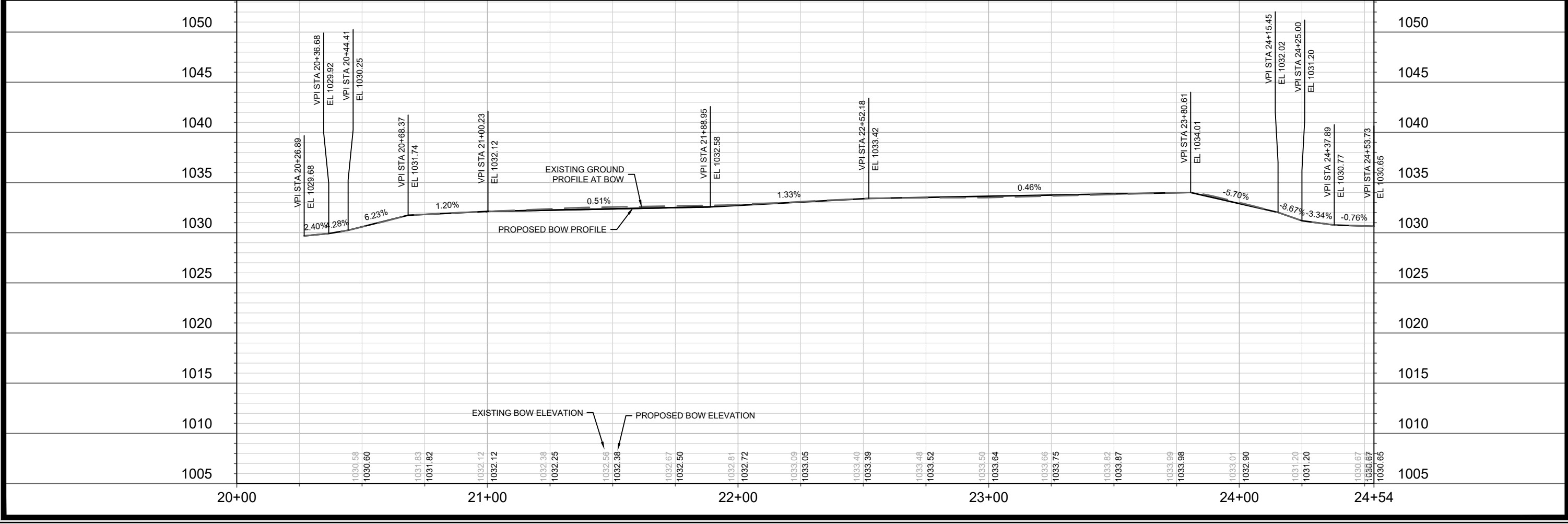
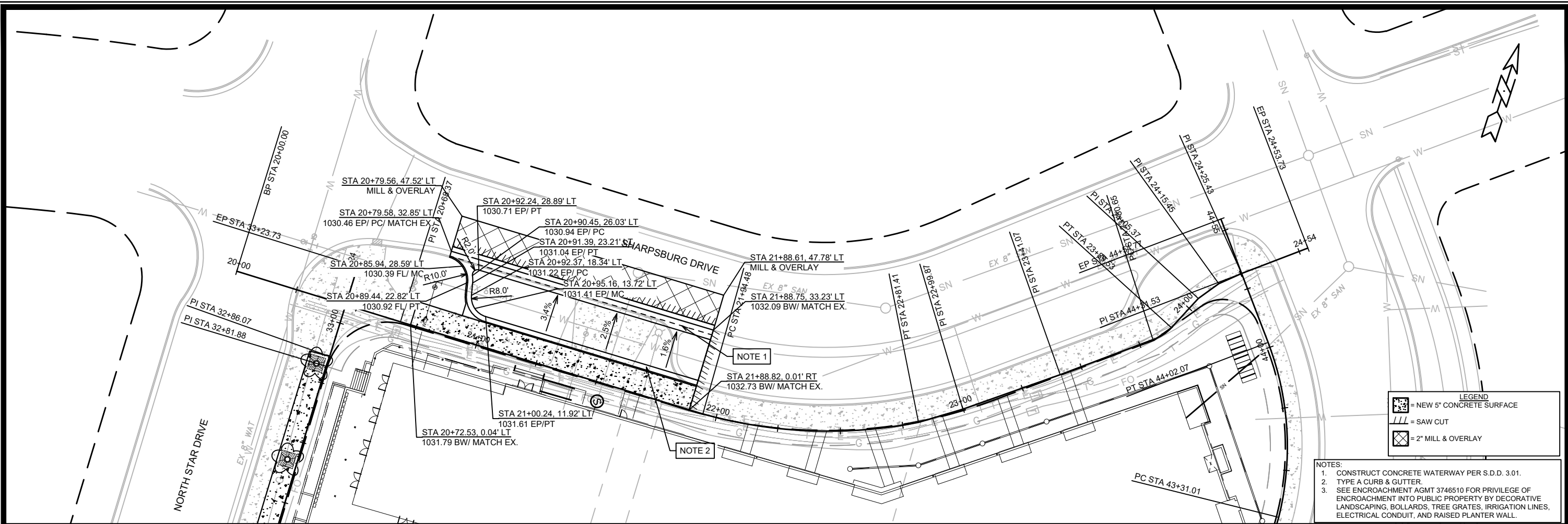
13339  
 MADISON, WI  
 CONTRACT NO: 9000

NORTH STAR DRIVE - PLAN & PROFILE  
 5909 SHARPSBURG DRIVE  
 M:\DESIGN\Projects\13339\CAD\Streets\13339EN-PnP.dwg



13339  
 P-3





13339	MADISON, WI	9000
SHARPSBURG DRIVE - PLAN & PROFILE		
5909 SHARPSBURG DRIVE		
M:\DESIGN\Projects\13339\CAD\Streets\13339EN-PnP.dwg		
MARK	REVISION	DATE
13339		
Designed By: ID	Date: 10/12/2021 10:48 AM	Scale: 1"=40'
CONTRACT NO:		P-4



13339  
P-4







LOT 3  
CSM 13886

GRANDVIEW COMMONS  
O.L. 27

**NOT FOR CONSTRUCTION -  
CITY RECORDS ONLY**

SHARPSBURG DRIVE

LOT 2  
CERTIFIED SURVEY MAP  
NO. 13817

NORTH STAR DRIVE

GEMINI DRIVE

LOT 1  
CERTIFIED SURVEY MAP  
NO. 13817

GRANDVIEW COMMONS  
458

**MAINTENANCE LEGEND:**

- = TERRACE REQUIRE MOWING BY CITY
- = SIDEWALK AND BIKE PATHS REQUIRE SNOW REMOVAL BY CITY
- = BUS STOP PAD REQUIRES SNOW REMOVAL BY CITY
- = CROSSWALK OR CONCRETE WATERWAY REQUIRE SNOW REMOVAL BY CITY
- = PRIVATELY MAINTAINED (MEDIANS, ISLAND, ROUNDABOUTS & PRIVATE OUTLOTS)
- = PUBLIC CITY ENGINEERING STORMWATER PROPERTY
- = PUBLIC CITY PARK PROPERTY
- = PRIVATE OUTLOT
- = PHASE BOUNDARY

**NOTE:**  
SEE MAINTENANCE AGREEMENT 5288422. PROPERTY OWNER AGREES TO FOLLOWING MAINTENANCE: SNOW AND ICE REMOVAL, CLEANING OF DIRT AND DEBRIS, GRAFFITI REMOVAL OR THE CORRECTION OF OTHER VANDALISM, REPAIR AND MAINTENANCE OF PAVEMENT AND DIAGONAL PAVEMENT MARKINGS.

MARK	REVISION	DATE	BY

13339  
MADISON, WI  
CONTRACT NO: 9000

M:\DESIGN\Projects\13339\CAD\Streets\13339EN-Maintenance.dwg

**MAINTENANCE PLAN**  
**5909 SHARPSBURG DRIVE**



13339  
MN-1