

Madison, Wisconsin

# CITY OF MADISON

## CITY ENGINEERING DIVISION

### DEPARTMENT OF PUBLIC WORKS

# PLAN OF PROPOSED IMPROVEMENT

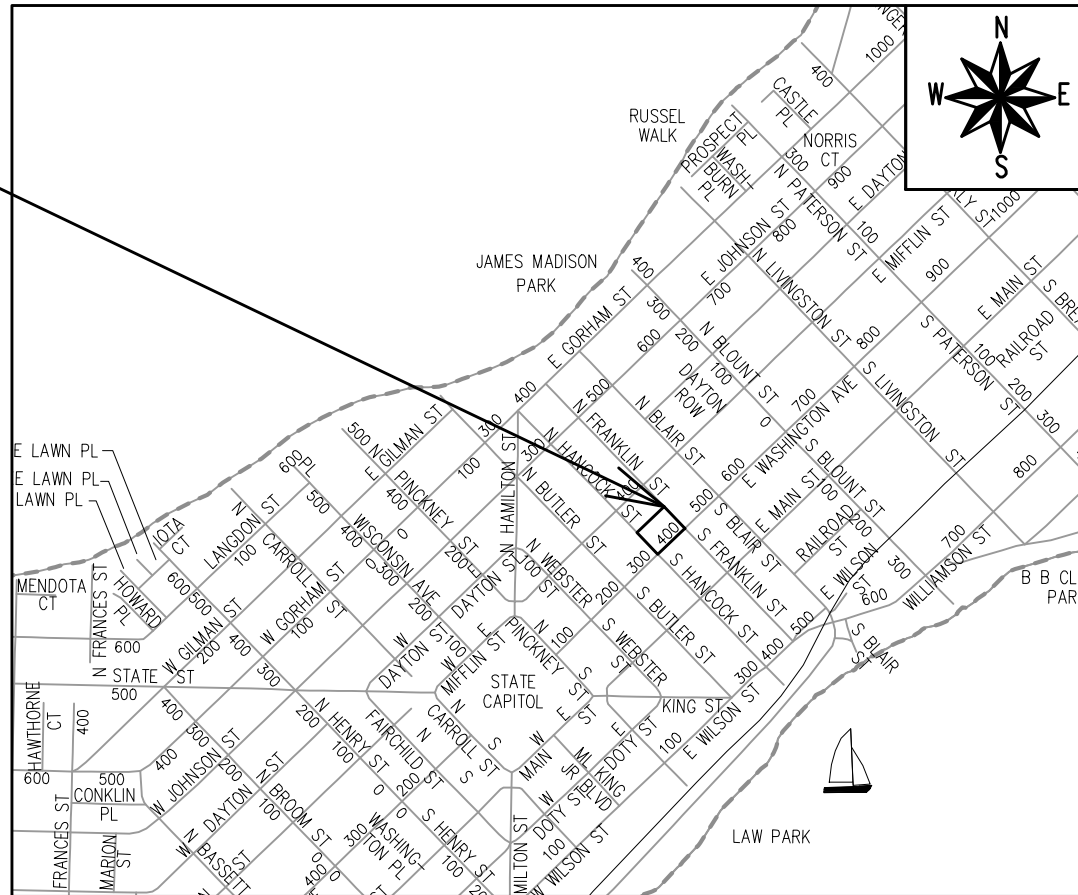
## 408 E. WASHINGTON AVENUE

CITY PROJECT NO. 13433  
CONTRACT NO. 9013

#### INDEX OF SHEETS

SHEET NO.	D1-D2	NOTES AND DETAILS
SHEET NO.	E-1	ELECTRICAL PLAN
SHEET NO.	P1-P3	SIDEWALK PLAN & PROFILE
SHEET NO.	U-1	UTILITY PLAN
SHEET NO.	L1	LANDSCAPING PLAN
NO MAINTENANCE PLAN		

### PROJECT LOCATION



PUBLIC IMPROVEMENT PROJECT APPROVED

FEBRUARY 2, 2021

BY THE COMMON COUNCIL OF MADISON, WISCONSIN

PUBLIC IMPROVEMENT DESIGN APPROVED BY:

*Greg Fries*

Oct 11, 2021

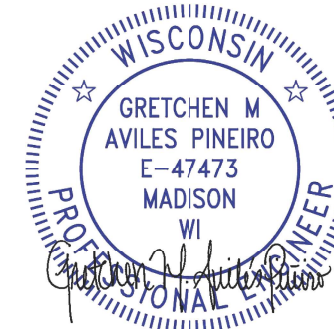
City Engineer

Date

SANITARY SEWER DESIGNED BY:

### LATERALS ONLY

ELECTRICAL DESIGNED BY:

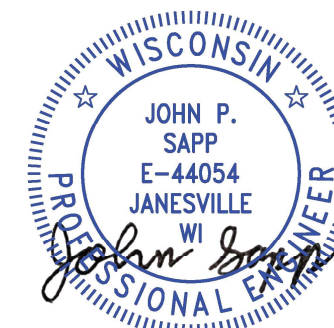


Oct 11, 2021

STORM SEWER DESIGNED BY:

### LATERALS ONLY

STREET GRADES DESIGNED BY:



Oct 12, 2021

WATER DESIGNED BY:

### LATERALS ONLY

PLOT SCALE: 1 IN. = 1 FT. XREF

PLOT NAME: ---

REV. DATE: 9/16/2021 1:44 PM

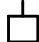


ORIGINATOR: CITY\_OF\_MADISON

ALL PROPOSED STREET TREE REMOVALS WITHIN THE RIGHT OF WAY SHALL BE REVIEWED BY CITY FORESTRY BEFORE THE PLAN COMMISSION MEETING. STREET TREE REMOVALS REQUIRE APPROVAL AND A TREE REMOVAL PERMIT ISSUED BY CITY FORESTRY. ANY STREET TREE REMOVALS REQUESTED AFTER THE DEVELOPMENT PLAN IS APPROVED BY THE PLAN COMMISSION OR THE BOARD OF PUBLIC WORKS AND CITY FORESTRY WILL REQUIRE A MINIMUM OF A 72-HOUR REVIEW PERIOD WHICH SHALL INCLUDE THE NOTIFICATION OF THE ALDERPERSON WITHIN WHO'S DISTRICT IS AFFECTED BY THE STREET TREE REMOVAL(S) PRIOR TO A TREE REMOVAL PERMIT BEING ISSUED.

AS DEFINED BY THE SECTION 107.13 OF CITY OF MADISON STANDARD SPECIFICATIONS FOR PUBLIC WORKS CONSTRUCTION: NO EXCAVATION IS PERMITTED WITHIN 5 FEET OF THE TRUNK OF THE STREET TREE OR WHEN CUTTING ROOTS OVER 3 INCHES IN DIAMETER. IF EXCAVATION IS NECESSARY, THE CONTRACTOR SHALL CONTACT MADISON CITY FORESTRY (266-4816) PRIOR TO EXCAVATION. CITY OF MADISON FORESTRY PERSONNEL SHALL ASSESS THE IMPACT TO THE TREE AND TO ITS ROOT SYSTEM PRIOR TO WORK COMMENCING. TREE PROTECTION SPECIFICATIONS CAN BE FOUND ON THE FOLLOWING WEBSITE: [HTTPS://WWW.CITYOFMADISON.COM/BUSINESS/PW/SPECS.CFM](https://www.cityofmadison.com/business/pw/specs.cfm)

DEVELOPER MUST SUBMIT A TRAFFIC CONTROL PLAN TO CITY TRAFFIC ENGINEERING AT LEAST 14 DAYS PRIOR TO THE START OF WORK. WORK SHALL NOT PROCEED UNTIL AN APPROVED TRAFFIC CONTROL PLAN IS IN PLACE.

CONTACT PROJECT ENGINEER AND STREET DESIGNER IKE OKAFOR AT [IOKAFOR@CITYOFMADISON.COM](mailto:IOKAFOR@CITYOFMADISON.COM) FOR CAD AND ALIGNMENT DATA PRIOR TO STAKING.

CONVENTIONAL SIGNS	
FIELD VERIFY ALL UTILITY LOCATIONS	
GAS	—— G ——
STORM SEWER	—— ST ——
SANITARY SEWER	—— SN ——
WATER	—— W ——
BURIED ELECTRIC	—— E ——
OVERHEAD ELECTRIC	—— OH ——
POWER POLE	
ADA COMPLIANT RAMP W/ DETECTABLE WARNING FIELD	
COMBUSTIBLE FLUIDS	

UNDERDRAINS SHALL BE INSTALLED PER STANDARD DETAIL DRAWING 4.05 FOR 75' ON EACH SIDE OF THE LOW POINT, OR TO THE NEAREST CURB HIGH POINT. ALL UNDERDRAIN SHALL BE WRAPPED.

ALL GUTTERS SHALL DRAIN WITH A MINIMUM GRADE OF 0.5% TOWARD STORM SEWER INLETS.

ALL DITCHES SHALL DRAIN WITH A MINIMUM GRADE OF 0.5%

THE CROSS SLOPE OF SIDEWALKS AND BARRIER FREE SIDEWALK CURB RAMPS SHALL TYPICALLY BE 1.5%. THE LONGITUDINAL GRADE OF BARRIER FREE SIDEWALK CURB RAMPS SHALL NOT EXCEED 8.33%. ALL SIDEWALK RAMPS SHALL BE CONSTRUCTED ACCORDING TO S.D.D. 3.04. AT ALL OTHER LOCATIONS THE LONGITUDINAL GRADE OF SIDEWALKS SHALL NOT BE LESS THAN 0.5% AND SHALL DRAIN TOWARD STORM SEWER INLETS. ALL SIDEWALK AND SIDEWALK RAMP ELEVATIONS AND GRADES SHALL BE FIELD VERIFIED AND SET TO COMPLY WITH THE CITY OF MADISON STANDARD SPECIFICATIONS AND THE A.D.A. GUIDELINES.

CURB STATION AND OFFSETS SHALL BE TO THE EDGE OF PAVEMENT UNLESS OTHERWISE INDICATED. CURB ELEVATIONS SHALL BE TO THE EDGE OF PAVEMENT UNLESS OTHERWISE INDICATED.

POWER POLES AND OTHER OBSTRUCTIONS SHALL BE MOVED TO PROVIDE 2 FEET MINIMUM OF CLEAR DISTANCE FROM ANY FACE OF CURB OR EDGE OF SIDEWALK.

ANY INFORMATION SHOWN ON THIS PLAN, WHICH IS NOT PART OF THIS RIGHT-OF-WAY PROJECT, IS PRELIMINARY AND NOT FOR CONSTRUCTION.

THERE MAY BE EXISTING UTILITIES OR OTHER FEATURES WHICH ARE EITHER NOT SHOWN OR SHOWN INCORRECTLY ON THIS PLAN. IT IS THE RESPONSIBILITY OF THE DEVELOPER TO LOCATE AND IDENTIFY ALL UTILITIES AND TOPOGRAPHY WHICH MAY AFFECT THE CONSTRUCTION OF THESE IMPROVEMENTS.

ALL PERMANENT SIGNING AND POSTING WILL BE DETERMINED AND PROVIDED BY THE TRAFFIC ENGINEERING DIVISION, FOLLOWING CONSTRUCTION OF THESE IMPROVEMENTS.

THE DEVELOPER SHALL PROVIDE, INSTALL AND MAINTAIN ALL STREET END BARRICADES, SIGNING AND TRAFFIC CONTROL, AS REQUIRED BY THE CITY TRAFFIC ENGINEER.

PAVEMENT SAWCUTS SHALL BE AS DIRECTED BY THE CITY CONSTRUCTION ENGINEER. SAWCUTS SHOWN ON THE PLAN ARE APPROXIMATE.

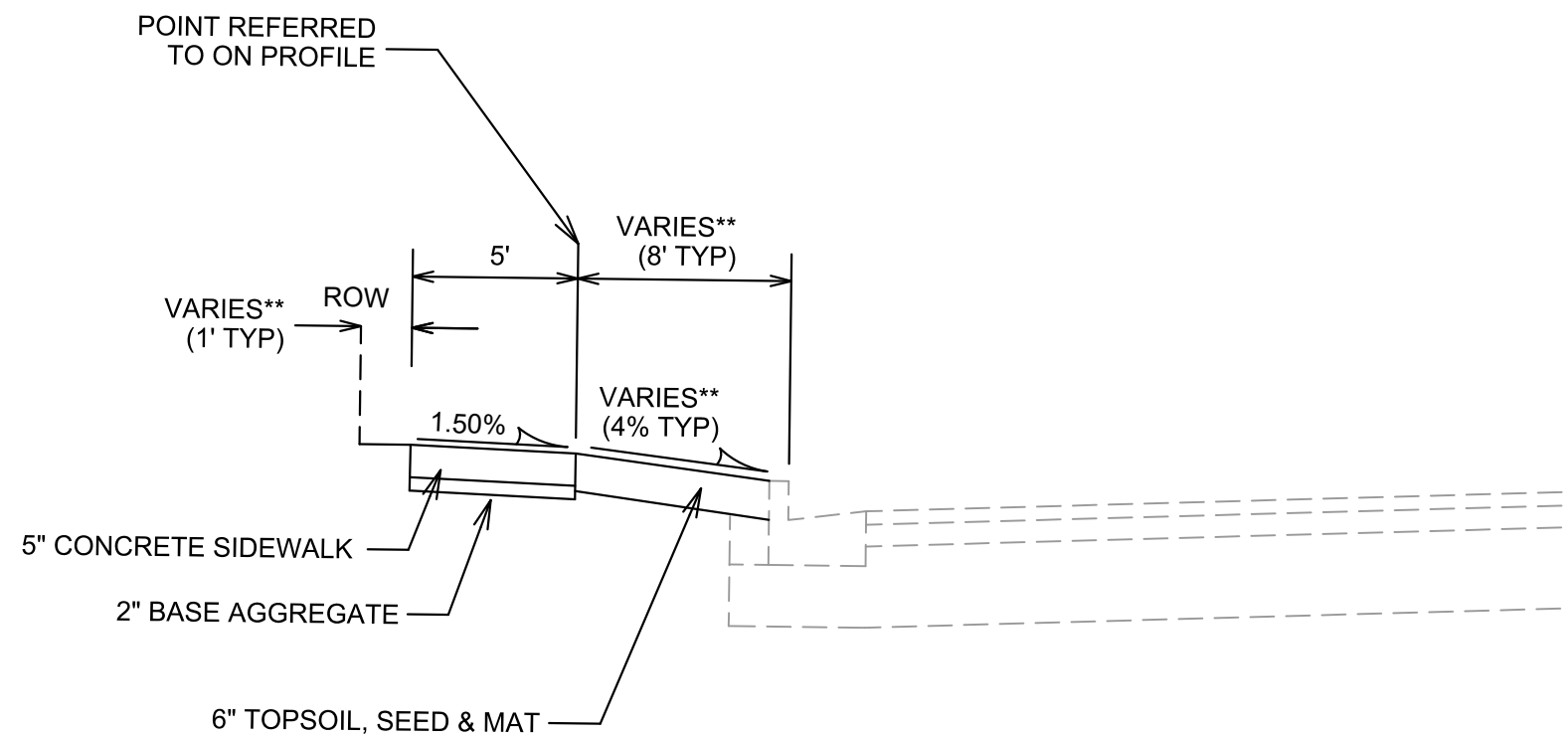
ALL WORK IN THE RIGHT OF WAY AND PUBLIC EASEMENTS SHALL BE IN ACCORDANCE WITH THE CITY OF MADISON STANDARD SPECIFICATIONS FOR PUBLIC WORKS CONSTRUCTION

DATE	BY
REVISION	
Date: 9/16/2021 1:56 PM	Scale: #####
MARK	13433

13433  
MADISON, WI  
9013  
CONTRACT NO:

STANDARD NOTES  
408 E WASHINGTON AVE  
M:\DESIGN\Projects\13433\CAD\Streets\13433EN-Details.dwg





## TYPICAL SECTION

N. HANCOCK ST: STA 12+01 TO STA 13+34  
 E. WASHINGTON AVE: STA 20+19 TO STA 22+21  
 N. FRANKLIN ST: STA 31+30 TO STA 32+65  
 NOT TO SCALE

NOTES:

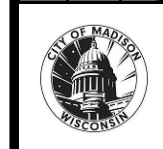
\*\* SEE PLAN FOR DETAILS AND DIMENSIONS

MARK	REVISION	DATE	BY
13433	Designed By: LO	Date: 9/16/2021 11:56 PM	Scale: NTS

13433  
 MADISON, WI

CONTRACT NO:  
 9013

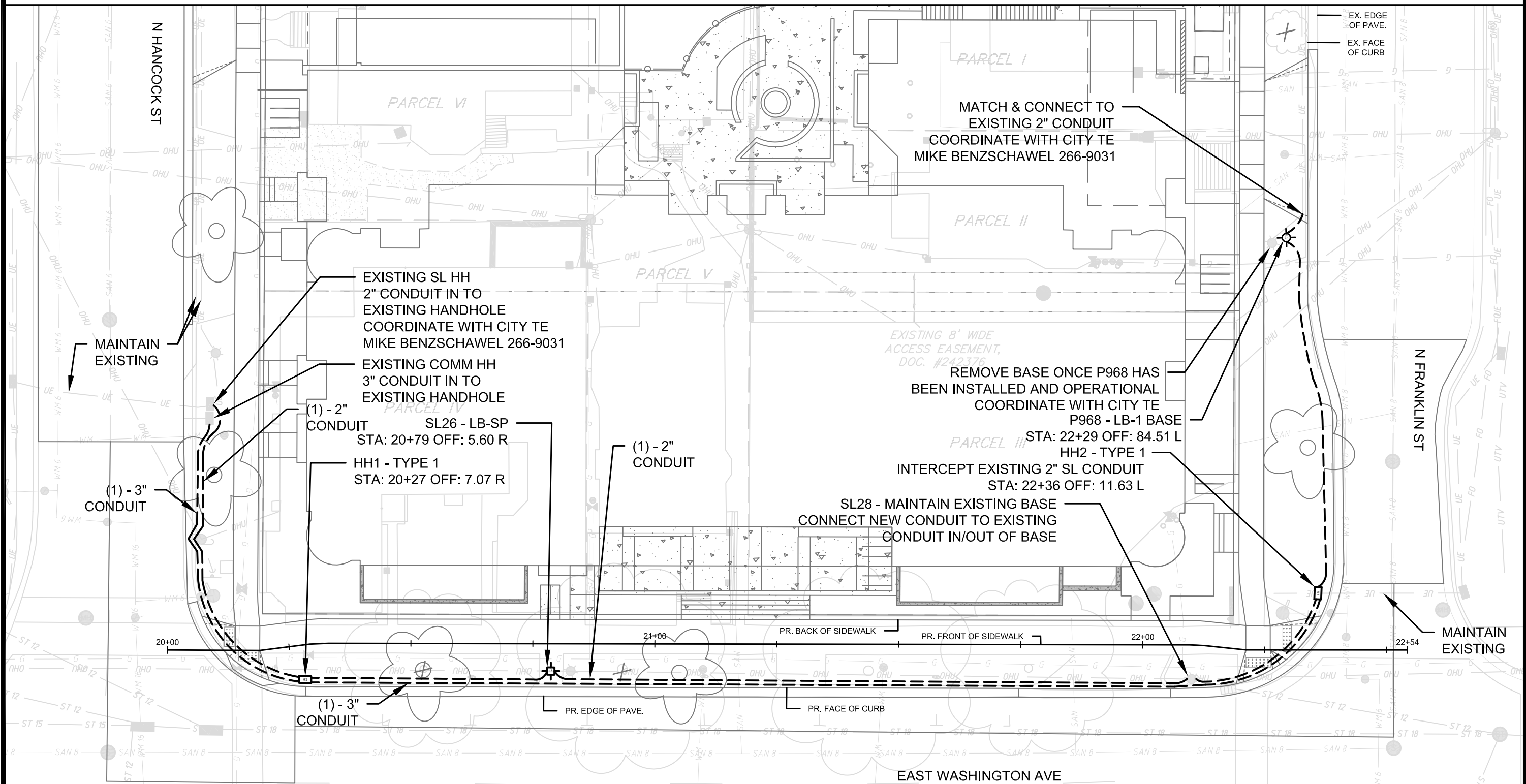
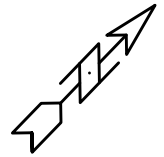
TYPICAL SECTION  
 408 E WASHINGTON AVE  
 M:\DESIGN\Projects\13433\CAD\Streets\13433EN-Details.dwg



13433  
 D-2

GENERAL ELECTRICAL NOTES

1. ALL LOCATIONS ARE APPROXIMATE, THE TRAFFIC ENGINEER SHALL APPROVE FINAL LOCATIONS, INCLUDING SETBACK IN THE FIELD, AFTER CONTRACTOR SURVEYS STAKING. THE CONTRACTOR SHALL NOTIFY GRETCHEN AVILES PINEIRO (GAVILESPINEIRO@CITYOFMADISON.COM), AT LEAST 24HOURS IN ADVANCE OF NEEDING BASE LOCATIONS MARKED.
2. BASES INSTALLED IN TERRACE SHALL BE 4' FROM FACE OF CURB UNLESS OTHERWISE NOTED, SUBJECT TO NOTE 1 ABOVE.
3. THE CONTRACTOR SHALL DO ALL WORK IN ACCORDANCE WITH "CITY OF MADISON STANDARD SPECIFICATIONS FOR PUBLIC WORKS CONSTRUCTION, LATEST EDITION" AND ADDEMDUMS THERETO. [cityofmadison.com/business/pw/specs.cfm](http://cityofmadison.com/business/pw/specs.cfm)
4. THE CONTRACTOR SHALL CALL TROY VANT (395-1975) AT THE TRAFFIC ENGINEERING SHOP AT LEAST 24-HOURS IN ADVANCE OF POURING BASES OR BURYING CONDUIT TO ARRANGE FOR INSPECTION. ANY WORK COMPLETED WITHOUT INSPECTION IS SUBJECT TO REJECTION.
5. THE CONTRACTOR SHALL CALL TROY VANT (395-1975) PRIOR TO REMOVING OR CONNECTING TO EXISTING CONDUITS OR HANDHOLES.
6. THE CONTRACTOR SHALL ARRANGE FOR PICKUP OF THE FOLLOWING CITY MATERIALS:  
 1" X 40" ANCHOR BOLTS: 1 SET OF 4 FOR LB-SP BASE  
 3/4" X 24" ANCHOR BOLTS: 1 SET OF 4 FOR LB-1 BASE




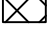
MARK	REVISION	DATE	BY
13433	Design: GMA	Date: 9/16/2021 8:30 AM	Scale: 1" = 20'
			E-1

13433  
 MADISON, WI  
 CONTRACT NO: 9013

ELECTRICAL PLAN  
 408 E WASHINGTON AVE  
 M:\DESIGN\Projects\13433\CAD\Traffic\13433TE-Electrical.dwg

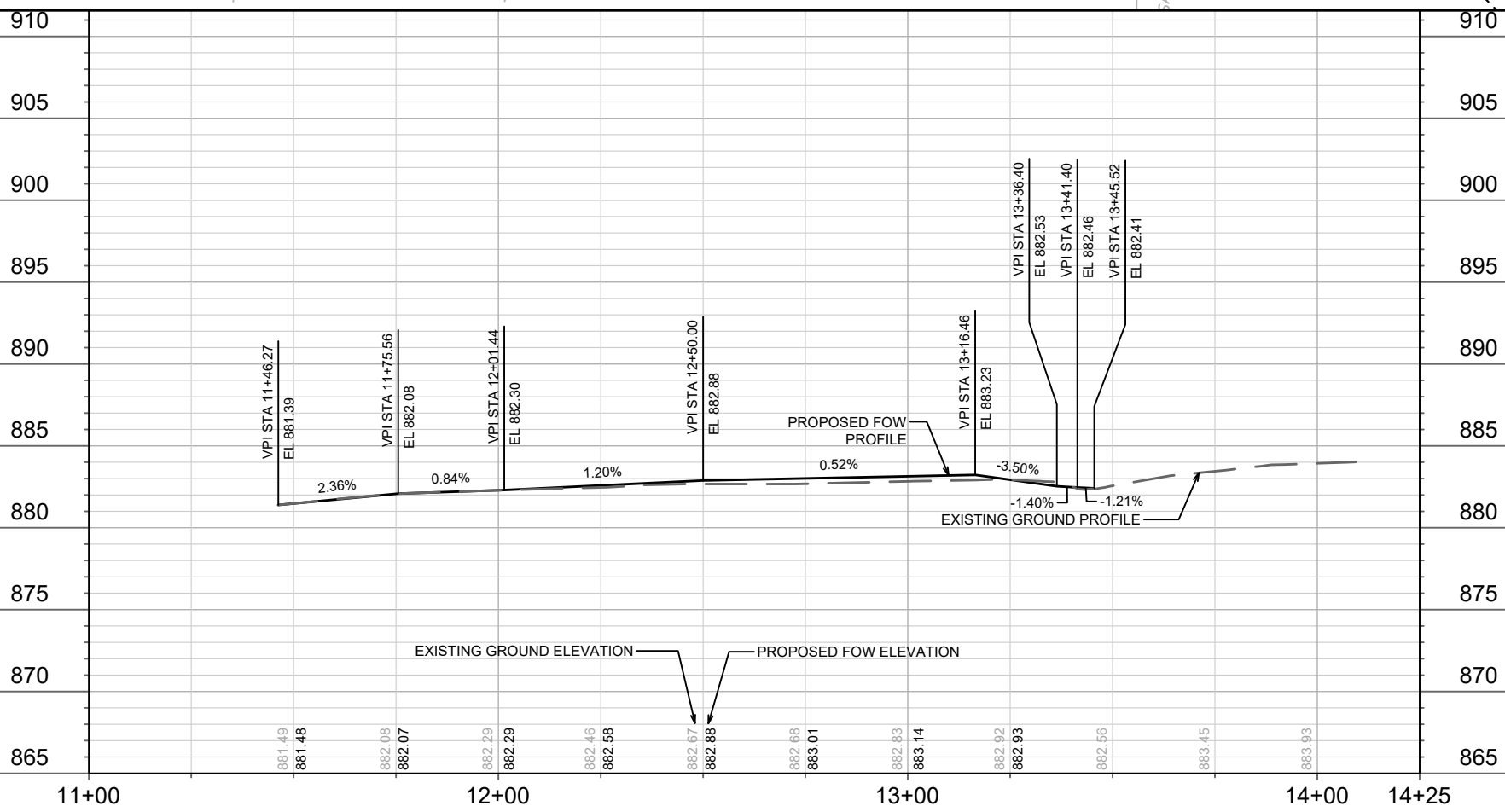
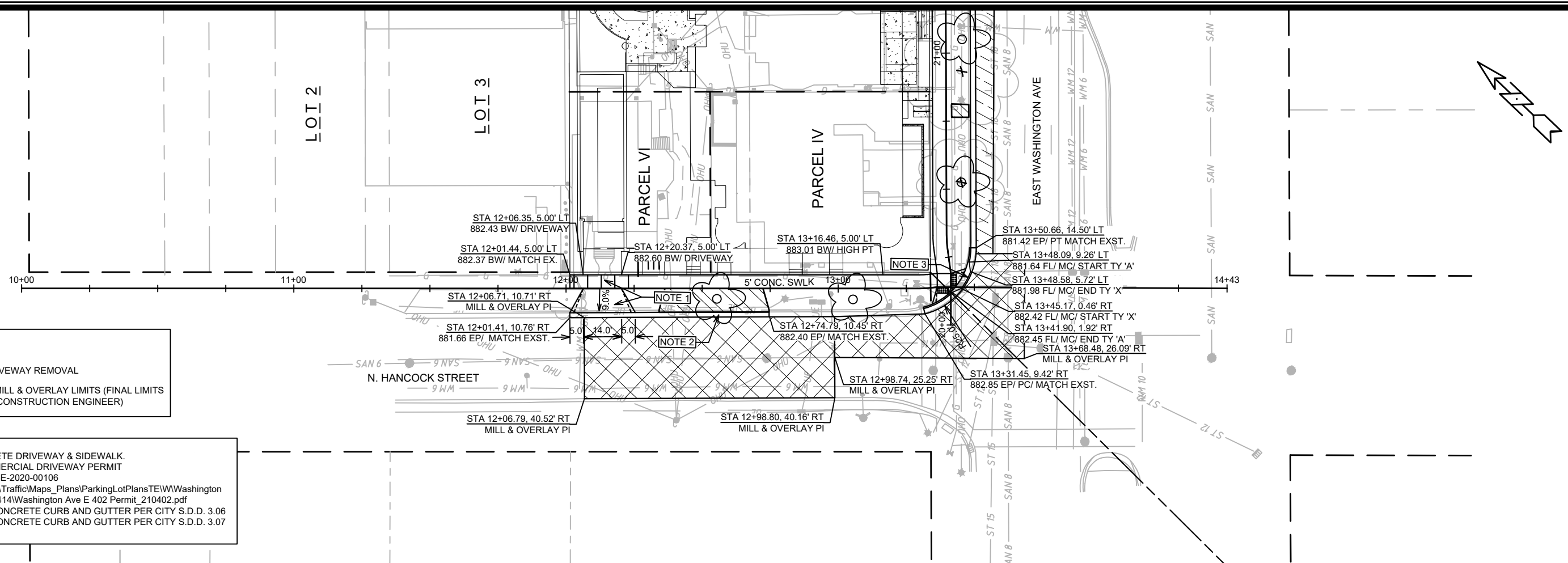
13433  
 E-1


**LEGEND**

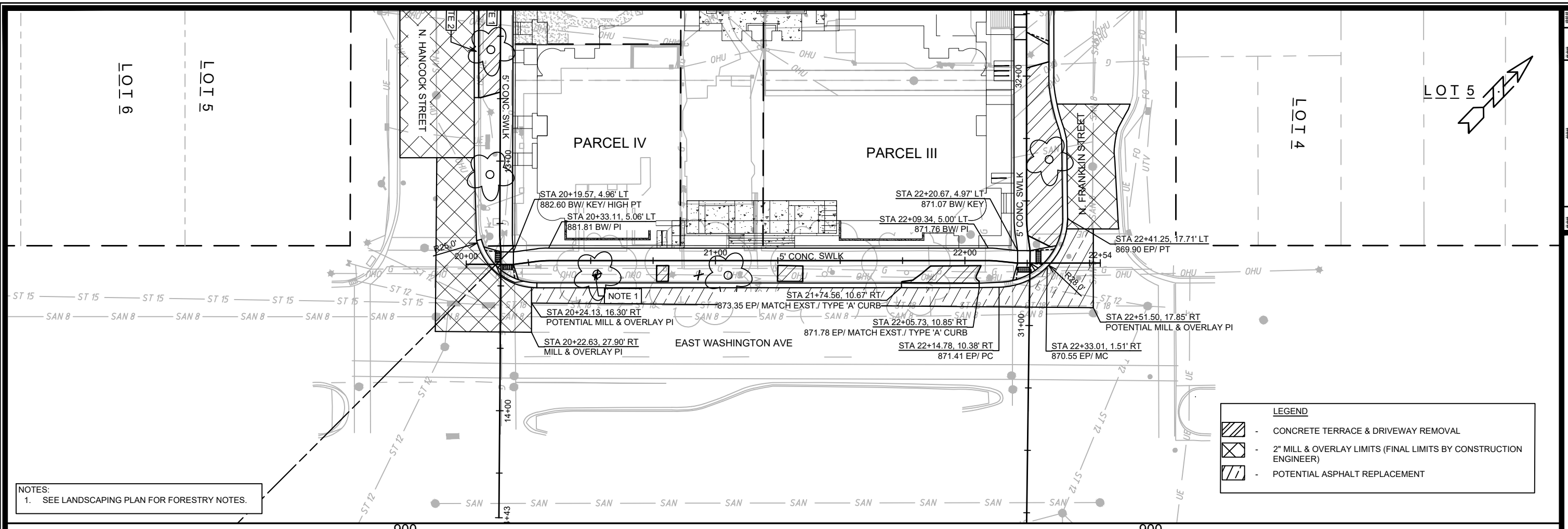
-  - DRIVEWAY REMOVAL
-  - 2" MILL & OVERLAY LIMITS (FINAL LIMITS BY CONSTRUCTION ENGINEER)

**NOTES:**

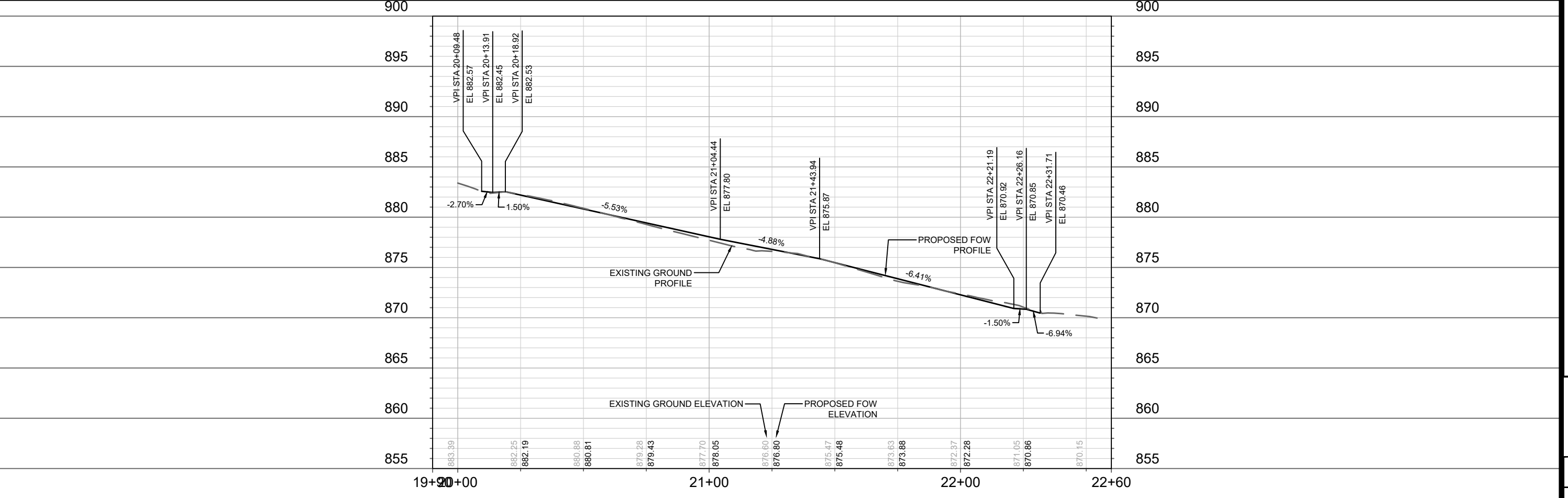
1. 7" CONCRETE DRIVEWAY & SIDEWALK. SEE COMMERCIAL DRIVEWAY PERMIT NO. LNDUSE-2020-00106  
M:\DESIGN\Traffic\Maps\_Plans\ParkingLotPlans\TEW\Washington Ave E 402-414\Washington Ave E 402 Permit\_210402.pdf
2. TYPE 'A' CONCRETE CURB AND GUTTER PER CITY S.D.D. 3.06
3. TYPE 'X' CONCRETE CURB AND GUTTER PER CITY S.D.D. 3.07



13433	MADISON, WI	9013	CONTRACT NO:	P-1
N HANCOCK SIDEWALK PLAN AND PROFILE				
408 E WASHINGTON AVENUE				
M:\DESIGN\Projects\13433\CAD\Streets\13433EN-PnP.dwg				
				
13433				
P-1				



**NOTES:**  
1. SEE LANDSCAPING PLAN FOR FORESTRY NOTES.



##	##	##	##	##	##
##	##	##	##	##	##
##	##	##	##	##	##
##	##	##	##	##	##
##	##	##	##	##	##

13433  
MADISON, WI  
CONTRACT NO: 9013  
13433  
P-2

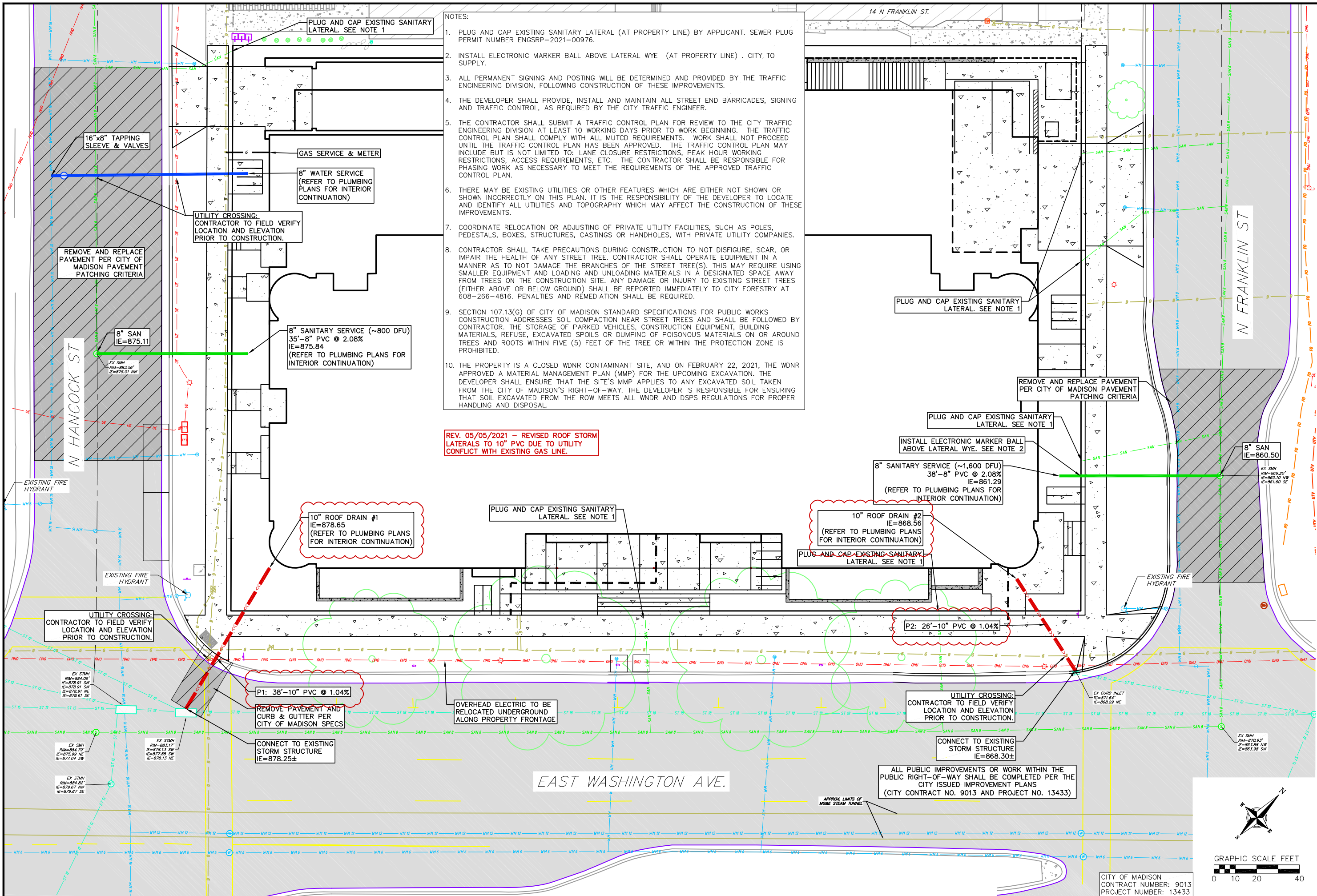
**E WASHINGTON SIDEWALK PLAN AND PROFILE**  
**408 E WASHINGTON AVENUE**  
M:\DESIGN\Projects\13433\CAD\Streets\13433EN-PrP.dwg



13433  
P-2







- NOTES:
1. PLUG AND CAP EXISTING SANITARY LATERAL (AT PROPERTY LINE) BY APPLICANT. SEWER PLUG PERMIT NUMBER ENGRP-2021-00976.
  2. INSTALL ELECTRONIC MARKER BALL ABOVE LATERAL WYE (AT PROPERTY LINE) . CITY TO SUPPLY.
  3. ALL PERMANENT SIGNING AND POSTING WILL BE DETERMINED AND PROVIDED BY THE TRAFFIC ENGINEERING DIVISION, FOLLOWING CONSTRUCTION OF THESE IMPROVEMENTS.
  4. THE DEVELOPER SHALL PROVIDE, INSTALL AND MAINTAIN ALL STREET END BARRICADES, SIGNING AND TRAFFIC CONTROL, AS REQUIRED BY THE CITY TRAFFIC ENGINEER.
  5. THE CONTRACTOR SHALL SUBMIT A TRAFFIC CONTROL PLAN FOR REVIEW TO THE CITY TRAFFIC ENGINEERING DIVISION AT LEAST 10 WORKING DAYS PRIOR TO WORK BEGINNING. THE TRAFFIC CONTROL PLAN SHALL COMPLY WITH ALL MUTCD REQUIREMENTS. WORK SHALL NOT PROCEED UNTIL THE TRAFFIC CONTROL PLAN HAS BEEN APPROVED. THE TRAFFIC CONTROL PLAN MAY INCLUDE BUT IS NOT LIMITED TO: LANE CLOSURE RESTRICTIONS, PEAK HOUR WORKING RESTRICTIONS, ACCESS REQUIREMENTS, ETC. THE CONTRACTOR SHALL BE RESPONSIBLE FOR PHASING WORK AS NECESSARY TO MEET THE REQUIREMENTS OF THE APPROVED TRAFFIC CONTROL PLAN.
  6. THERE MAY BE EXISTING UTILITIES OR OTHER FEATURES WHICH ARE EITHER NOT SHOWN OR SHOWN INCORRECTLY ON THIS PLAN. IT IS THE RESPONSIBILITY OF THE DEVELOPER TO LOCATE AND IDENTIFY ALL UTILITIES AND TOPOGRAPHY WHICH MAY AFFECT THE CONSTRUCTION OF THESE IMPROVEMENTS.
  7. COORDINATE RELOCATION OR ADJUSTING OF PRIVATE UTILITY FACILITIES, SUCH AS POLES, PEDESTALS, BOXES, STRUCTURES, CASTINGS OR HANDHOLES, WITH PRIVATE UTILITY COMPANIES.
  8. CONTRACTOR SHALL TAKE PRECAUTIONS DURING CONSTRUCTION TO NOT DISFIGURE, SCAR, OR IMPAIR THE HEALTH OF ANY STREET TREE. CONTRACTOR SHALL OPERATE EQUIPMENT IN A MANNER AS TO NOT DAMAGE THE BRANCHES OF THE STREET TREE(S). THIS MAY REQUIRE USING SMALLER EQUIPMENT AND LOADING AND UNLOADING MATERIALS IN A DESIGNATED SPACE AWAY FROM TREES ON THE CONSTRUCTION SITE. ANY DAMAGE OR INJURY TO EXISTING STREET TREES (EITHER ABOVE OR BELOW GROUND) SHALL BE REPORTED IMMEDIATELY TO CITY FORESTRY AT 608-266-4816. PENALTIES AND REMEDIATION SHALL BE REQUIRED.
  9. SECTION 107.13(G) OF CITY OF MADISON STANDARD SPECIFICATIONS FOR PUBLIC WORKS CONSTRUCTION ADDRESSES SOIL COMPACTION NEAR STREET TREES AND SHALL BE FOLLOWED BY CONTRACTOR. THE STORAGE OF PARKED VEHICLES, CONSTRUCTION EQUIPMENT, BUILDING MATERIALS, REFUSE, EXCAVATED SPOILS OR DUMPING OF POISONOUS MATERIALS ON OR AROUND TREES AND ROOTS WITHIN FIVE (5) FEET OF THE TREE OR WITHIN THE PROTECTION ZONE IS PROHIBITED.
  10. THE PROPERTY IS A CLOSED WDNR CONTAMINANT SITE, AND ON FEBRUARY 22, 2021, THE WDNR APPROVED A MATERIAL MANAGEMENT PLAN (MMP) FOR THE UPCOMING EXCAVATION. THE DEVELOPER SHALL ENSURE THAT THE SITE'S MMP APPLIES TO ANY EXCAVATED SOIL TAKEN FROM THE CITY OF MADISON'S RIGHT-OF-WAY. THE DEVELOPER IS RESPONSIBLE FOR ENSURING THAT SOIL EXCAVATED FROM THE ROW MEETS ALL WDNR AND DSPS REGULATIONS FOR PROPER HANDLING AND DISPOSAL.

REV. 05/05/2021 - REVISED ROOF STORM LATERALS TO 10" PVC DUE TO UTILITY CONFLICT WITH EXISTING GAS LINE.

NO.	DATE	REVISIONS	REMARKS
1	5/5/21	REVISION 1	

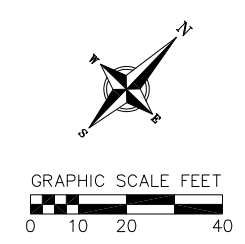
SCALE: AS SHOWN

DATE: 04/21/2021

DRAFTER: ZDRE

CHECKED: JZAM

PROJECT NO.: 190350



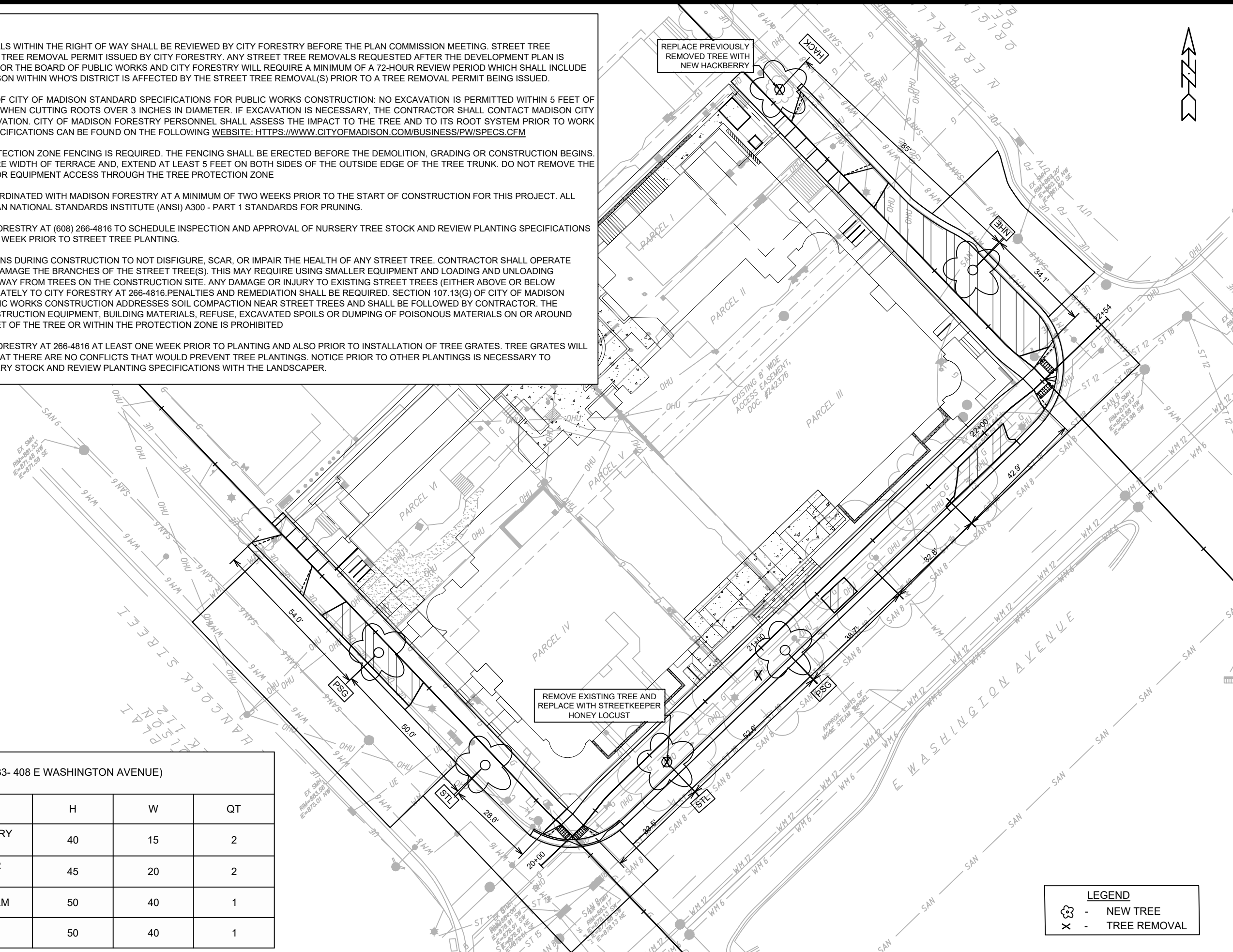
CITY OF MADISON  
CONTRACT NUMBER: 9013  
PROJECT NUMBER: 13433



**NOTES**

1. ALL PROPOSED STREET TREE REMOVALS WITHIN THE RIGHT OF WAY SHALL BE REVIEWED BY CITY FORESTRY BEFORE THE PLAN COMMISSION MEETING. STREET TREE REMOVALS REQUIRE APPROVAL AND A TREE REMOVAL PERMIT ISSUED BY CITY FORESTRY. ANY STREET TREE REMOVALS REQUESTED AFTER THE DEVELOPMENT PLAN IS APPROVED BY THE PLAN COMMISSION OR THE BOARD OF PUBLIC WORKS AND CITY FORESTRY WILL REQUIRE A MINIMUM OF A 72-HOUR REVIEW PERIOD WHICH SHALL INCLUDE THE NOTIFICATION OF THE ALDERPERSON WITHIN WHO'S DISTRICT IS AFFECTED BY THE STREET TREE REMOVAL(S) PRIOR TO A TREE REMOVAL PERMIT BEING ISSUED.
2. AS DEFINED BY THE SECTION 107.13 OF CITY OF MADISON STANDARD SPECIFICATIONS FOR PUBLIC WORKS CONSTRUCTION: NO EXCAVATION IS PERMITTED WITHIN 5 FEET OF THE TRUNK OF THE STREET TREE OR WHEN CUTTING ROOTS OVER 3 INCHES IN DIAMETER. IF EXCAVATION IS NECESSARY, THE CONTRACTOR SHALL CONTACT MADISON CITY FORESTRY (266-4816) PRIOR TO EXCAVATION. CITY OF MADISON FORESTRY PERSONNEL SHALL ASSESS THE IMPACT TO THE TREE AND TO ITS ROOT SYSTEM PRIOR TO WORK COMMENCING. TREE PROTECTION SPECIFICATIONS CAN BE FOUND ON THE FOLLOWING WEBSITE: [HTTPS://WWW.CITYOFMADISON.COM/BUSINESS/PW/SPECS.CFM](https://www.cityofmadison.com/business/pw/specs.cfm)
3. ON THIS PROJECT, STREET TREE PROTECTION ZONE FENCING IS REQUIRED. THE FENCING SHALL BE ERECTED BEFORE THE DEMOLITION, GRADING OR CONSTRUCTION BEGINS. THE FENCE SHALL INCLUDE THE ENTIRE WIDTH OF TERRACE AND, EXTEND AT LEAST 5 FEET ON BOTH SIDES OF THE OUTSIDE EDGE OF THE TREE TRUNK. DO NOT REMOVE THE FENCING TO ALLOW FOR DELIVERIES OR EQUIPMENT ACCESS THROUGH THE TREE PROTECTION ZONE
4. STREET TREE PRUNING SHALL BE COORDINATED WITH MADISON FORESTRY AT A MINIMUM OF TWO WEEKS PRIOR TO THE START OF CONSTRUCTION FOR THIS PROJECT. ALL PRUNING SHALL FOLLOW THE AMERICAN NATIONAL STANDARDS INSTITUTE (ANSI) A300 - PART 1 STANDARDS FOR PRUNING.
5. CONTRACTOR SHALL CONTACT CITY FORESTRY AT (608) 266-4816 TO SCHEDULE INSPECTION AND APPROVAL OF NURSERY TREE STOCK AND REVIEW PLANTING SPECIFICATIONS WITH THE LANDSCAPER AT LEAST ONE WEEK PRIOR TO STREET TREE PLANTING.
6. CONTRACTOR SHALL TAKE PRECAUTIONS DURING CONSTRUCTION TO NOT DISFIGURE, SCAR, OR IMPAIR THE HEALTH OF ANY STREET TREE. CONTRACTOR SHALL OPERATE EQUIPMENT IN A MANNER AS TO NOT DAMAGE THE BRANCHES OF THE STREET TREE(S). THIS MAY REQUIRE USING SMALLER EQUIPMENT AND LOADING AND UNLOADING MATERIALS IN A DESIGNATED SPACE AWAY FROM TREES ON THE CONSTRUCTION SITE. ANY DAMAGE OR INJURY TO EXISTING STREET TREES (EITHER ABOVE OR BELOW GROUND) SHALL BE REPORTED IMMEDIATELY TO CITY FORESTRY AT 266-4816. PENALTIES AND REMEDIATION SHALL BE REQUIRED. SECTION 107.13(G) OF CITY OF MADISON STANDARD SPECIFICATIONS FOR PUBLIC WORKS CONSTRUCTION ADDRESSES SOIL COMPACTION NEAR STREET TREES AND SHALL BE FOLLOWED BY CONTRACTOR. THE STORAGE OF PARKED VEHICLES, CONSTRUCTION EQUIPMENT, BUILDING MATERIALS, REFUSE, EXCAVATED SPOILS OR DUMPING OF POISONOUS MATERIALS ON OR AROUND TREES AND ROOTS WITHIN FIVE (5) FEET OF THE TREE OR WITHIN THE PROTECTION ZONE IS PROHIBITED
7. CONTRACTOR SHALL CONTACT CITY FORESTRY AT 266-4816 AT LEAST ONE WEEK PRIOR TO PLANTING AND ALSO PRIOR TO INSTALLATION OF TREE GRATES. TREE GRATES WILL REQUIRE EXCAVATION TO CONFIRM THAT THERE ARE NO CONFLICTS THAT WOULD PREVENT TREE PLANTINGS. NOTICE PRIOR TO OTHER PLANTINGS IS NECESSARY TO SCHEDULE INSPECTION OF THE NURSERY STOCK AND REVIEW PLANTING SPECIFICATIONS WITH THE LANDSCAPER.

PLANT LIST (13433- 408 E WASHINGTON AVENUE)				
CODE	NAME	H	W	QT
PSG	PRINCETON SENTRY GINKGO	40	15	2
STL	STREETKEEPER HONEYLOCUST	45	20	2
NHE	NEW HORIZON ELM	50	40	1
HACK	HACKBERRY	50	40	1



**LEGEND**

- ☼ - NEW TREE
- X - TREE REMOVAL

**LANDSCAPE PLAN**  
**408 E WASHINGTON AVENUE**  
 M:\DESIGN\Projects\13433\CAD\Streets\13433EN-PnP.dwg

13433	MADISON, WI	9013	CONTRACT NO:	13433	L-1
-------	-------------	------	--------------	-------	-----

City of Madison Wisconsin  
 13433  
 L-1