



Madison, Wisconsin

CITY OF MADISON

CITY ENGINEERING DIVISION

DEPARTMENT OF PUBLIC WORKS

PLAN OF PROPOSED IMPROVEMENT

INDEX OF SHEETS

| | |
|---------------------|-------------------------|
| SHEET NO. D1-D2 | NOTES AND DETAILS |
| SHEET NO. P1-P3 | STREET PLAN & PROFILES |
| SHEET NO. U1 | UTILITY PLAN & PROFILES |
| NO MAINTENANCE PLAN | |

4411 VERNON BOULEVARD

CITY PROJECT NO. 13479
CONTRACT NO. 9028

**PROJECT
LOCATION**



PUBLIC IMPROVEMENT PROJECT APPROVED

MARCH 30, 2021

BY THE COMMON COUNCIL OF MADISON, WISCONSIN

PUBLIC IMPROVEMENT DESIGN APPROVED BY:

 08/25/21

City Engineer Date

STREET DESIGNED BY:



STORM SEWER DESIGNED BY:

**LATERALS
ONLY**

GENERAL NOTES:

- THE DEVELOPER SHALL REPLACE ALL CURB & GUTTER AND SIDEWALK THAT IS DAMAGED OR DETERMINED TO BE IN UNSATISFACTORY CONDITION.
- ALL GUTTERS SHALL DRAIN WITH A MINIMUM GRADES OF 0.5% TOWARD STORM SEWER INLETS.
- ALL DISTURBED TERRACE AREAS SHALL BE RESTORED WITH 6-INCHES OF TOP SOIL AND SEED UNLESS DIRECTED OTHERWISE ON THE PLAN OR BY THE CITY CONSTRUCTION ENGINEER.
- TYPICAL PAVEMENT CROSS SLOPES SHALL BE 2% AND TERRACES SHALL SLOPE AT A 4% GRADE TOWARD THE GUTTER.
- THE CROSS SLOPE OF SIDEWALKS AND BARRIER FREE SIDEWALK CURB RAMPS SHALL BE 1.5%. THE LONGITUDINAL GRADE OF BARRIER FREE SIDEWALK CURB RAMPS SHALL NOT EXCEED 8.33%. ALL SIDEWALK RAMPS SHALL BE CONSTRUCTED ACCORDING TO S.D.D.3.03. AT ALL OTHER LOCATIONS THE LONGITUDINAL GRADE OF SIDEWALKS SHALL NOT EXCEED 5.0% OR THE ADJACENT STREET GRADE WHICHEVER IS GREATER NOR BE LESS THAN 0.5% AND SHALL DRAIN TOWARD STORM SEWER INLETS. CONCRETE TERRACE SHALL BE INSTALLED BETWEEN THE SIDEWALK AND THE BACK OF CURB AT SIDEWALK LOW POINTS WHICH CANNOT OTHERWISE BE DRAINED DIRECTLY TO THE GUTTER. SIDE SLOPES WITHIN TEN FEET OF A PUBLIC SIDEWALK SHALL NOT EXCEED 4.00:1. ALL SIDEWALK AND SIDEWALK RAMP ELEVATIONS AND GRADES SHALL BE FIELD VERIFIED AND SET TO COMPLY WITH THE CITY OF MADISON STANDARD SPECIFICATIONS AND THE A.D.A. GUIDELINES.
- OBTAIN A PRINT OUT OF THE ALIGNMENT FROM THE CITY ENGINEER PRIOR TO STAKING THIS PROJECT.
- CURB STATION AND OFFSETS SHALL BE TO THE EDGE OF PAVEMENT UNLESS OTHERWISE INDICATED. CURB ELEVATIONS SHALL BE TO THE EDGE OF PAVEMENT UNLESS OTHERWISE INDICATED.
- POWER POLES AND OTHER OBSTRUCTIONS SHALL BE MOVED TO PROVIDE 2 FEET MINIMUM OF CLEAR DISTANCE FROM ANY FACE OF CURB OR EDGE OF SIDEWALK.
- ANY INFORMATION SHOWN ON THIS PLAN, WHICH IS NOT PART OF THIS RIGHT-OF-WAY PROJECT, IS PRELIMINARY AND NOT FOR CONSTRUCTION.
- THERE MAY BE EXISTING UTILITIES OR OTHER FEATURES WHICH ARE EITHER NOT SHOWN OR SHOWN INCORRECTLY ON THIS PLAN. IT IS THE RESPONSIBILITY OF THE DEVELOPER TO LOCATE AND IDENTIFY ALL UTILITIES AND TOPOGRAPHY WHICH MAY AFFECT THE CONSTRUCTION OF THESE IMPROVEMENTS.
- ALL PERMANENT SIGNING AND POSTING WILL BE DETERMINED AND PROVIDED BY THE TRAFFIC ENGINEERING DIVISION, FOLLOWING CONSTRUCTION OF THESE IMPROVEMENTS.
- THE DEVELOPER SHALL PROVIDE, INSTALL AND MAINTAIN ALL STREET END BARRICADES, SIGNING AND TRAFFIC CONTROL, AS REQUIRED BY THE CITY TRAFFIC ENGINEER.
- THE CONTRACTOR SHALL SUBMIT A TRAFFIC CONTROL PLAN FOR REVIEW TO THE CITY TRAFFIC ENGINEERING DIVISION AT LEAST 10 WORKING DAYS PRIOR TO WORK BEGINNING. THE TRAFFIC CONTROL PLAN SHALL COMPLY WITH ALL MUTCD REQUIREMENTS. WORK SHALL NOT PROCEED UNTIL THE TRAFFIC CONTROL PLAN HAS BEEN APPROVED. THE TRAFFIC CONTROL PLAN MAY INCLUDE BUT IS NOT LIMITED TO: LANE CLOSURE RESTRICTIONS, PEAK HOUR WORKING RESTRICTIONS, ACCESS REQUIREMENTS, ETC. THE CONTRACTOR SHALL BE RESPONSIBLE FOR PHASING WORK AS NECESSARY TO MEET THE REQUIREMENTS OF THE APPROVED TRAFFIC CONTROL PLAN.
- PAVEMENT SAWCUTS AND FINAL PAVEMENT PATCHING LIMITS SHALL BE AS DIRECTED BY THE CITY CONSTRUCTION ENGINEER. SAWCUTS AND LIMITS SHOWN ON THE PLAN ARE BASED ON ANTICIPATED DISTURBANCE AND THE PATCHING CRITERIA BUT SHALL BE CONSIDERED APPROXIMATE. ALL PAVEMENT PATCHING SHALL BE PER THE CITY'S PATCHING CRITERIA.

- NO TREES, EXCEPT THOSE SHOWN ON THE PLANS, SHALL BE REMOVED. IT IS EXPECTED THAT CONSTRUCTION WILL BE STAGED SUCH THAT EXISTING TREES THAT ARE TO REMAIN WILL BE PRESERVED. ANY REQUESTED TREE REMOVALS FOR CONSTRUCTION SHALL BE REVIEWED IN FURTHER DETAIL WITH CITY FORESTRY, AND, IF A TREE REMOVAL PERMIT WILL BE GRANTED, IT WILL REQUIRE AT LEAST A 72 HOUR WAIT PERIOD BEFORE IT CAN BE ISSUED; THE ADDITIONAL TIME IS REQUIRED TO NOTIFY THE ALDER OF THE CHANGE IN THE TREE PLAN. CITY FORESTRY WILL ISSUE A REMOVAL PERMIT FOR ALL TREE REMOVALS IN THE RIGHT OF WAY IDENTIFIED ON PLANS. CONTACT CITY FORESTRY AT 266-4816 TO OBTAIN THE STREET TREE REMOVAL PERMIT.
- CONTRACTOR SHALL CONTACT CITY FORESTRY AT 266-4816 AT LEAST ONE WEEK PRIOR TO PLANTING AND ALSO PRIOR TO INSTALLATION OF TREE GRATES. TREE GRATES WILL REQUIRE EXCAVATION TO CONFIRM THAT THERE ARE NO CONFLICTS THAT WOULD PREVENT TREE PLANTINGS. NOTICE PRIOR TO OTHER PLANTINGS IS NECESSARY TO SCHEDULE INSPECTION OF THE NURSERY STOCK AND REVIEW PLANTING SPECIFICATIONS WITH THE LANDSCAPER.
- CONTRACTOR SHALL INSTALL TREE PROTECTION FENCING IN THE AREA BETWEEN THE CURB AND SIDEWALK AND EXTEND IT AT LEAST 5 FEET FROM BOTH SIDES OF THE TREE ALONG THE LENGTH OF THE TERRACE. NO EXCAVATION IS PERMITTED WITHIN 5 FEET OF THE OUTSIDE EDGE OF A TREE TRUNK. IF EXCAVATION WITHIN 5 FEET OF ANY TREE IS NECESSARY, CONTRACTOR SHALL CONTACT CITY FORESTRY (266-4816) PRIOR TO EXCAVATION TO ASSESS THE IMPACT TO THE TREE AND ROOT SYSTEM. TREE PRUNING SHALL BE COORDINATED WITH CITY FORESTRY PRIOR TO THE START OF CONSTRUCTION. TREE PROTECTION SPECIFICATIONS CAN BE FOUND IN SECTION 107.13 OF CITY OF MADISON STANDARD SPECIFICATIONS FOR PUBLIC WORKS CONSTRUCTION; [HTTP://WWW.CITYOFMADISON.COM/BUSINESS/PW/DOCUMENTS/STDSPECS/2018/PART1.PDF](http://www.cityofmadison.com/business/pw/documents/stdspecs/2018/part1.pdf). ANY TREE REMOVALS THAT ARE REQUIRED FOR CONSTRUCTION AFTER THE DEVELOPMENT PLAN IS APPROVED WILL REQUIRE AT LEAST A 72 HOUR WAIT PERIOD BEFORE A TREE REMOVAL PERMIT CAN BE ISSUED BY FORESTRY, TO NOTIFY THE ALDER OF THE CHANGE IN THE TREE PLAN.



TO OBTAIN LOCATION OF PARTICIPANTS' UNDERGROUND FACILITIES BEFORE YOU DIG IN WISCONSIN

CALL DIGGERS HOTLINE
1-800-242-8511
TOLL FREE

WIS. STATUTE 182.0175 (1974)
 REQUIRES MIN. OF 3 WORK DAYS
 NOTICE BEFORE YOU EXCAVATE

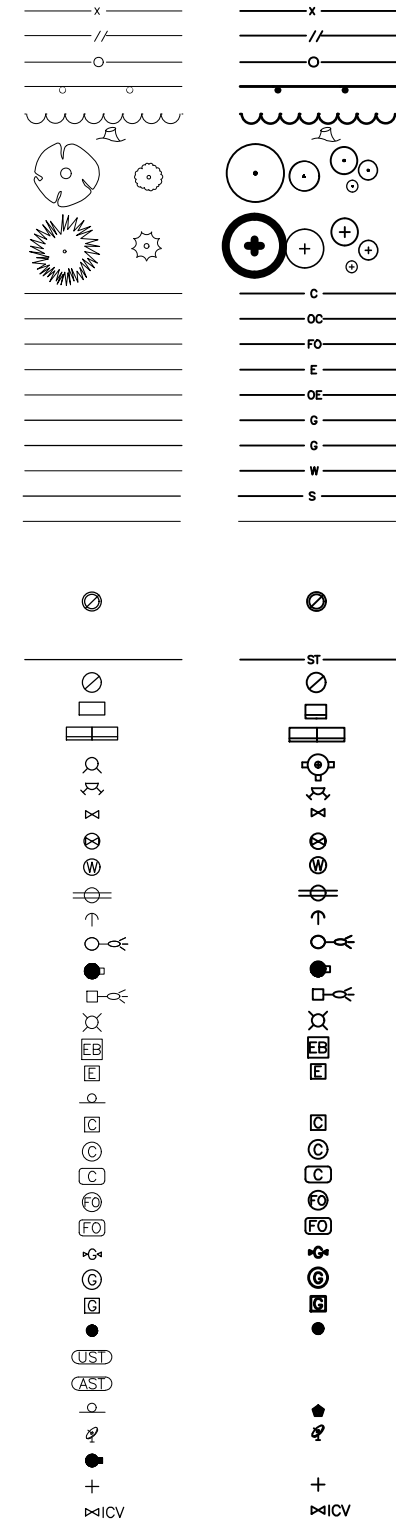
LEGEND

FEATURES

- Spot Elevation
- Contour Elevation
- Fence (Barbed, Field, Hog)
- Fence (Chain Link)
- Fence (Wood)
- Fence (Silt)
- Tree Line
- Tree Stump
- Deciduous Tree \ \ Shrub
- Coniferous Tree \ \ Shrub
- Communication
- Overhead Communication
- Fiber Optic
- Underground Electric
- Overhead Electric
- Gas Main
- High Pressure Gas Main
- Water Main
- Sanitary Sewer
- Duct Bank
- Test Hole Location for SUE w/ID
- Sanitary Manhole
- Storm Sewer
- Storm Manhole
- Single Storm Sewer Intake
- Double Storm Sewer Intake
- Fire Hydrant
- Fire Hydrant on Building
- Water Main Valve
- Water Service Valve
- Well
- Utility Pole
- Guy Anchor
- Utility Pole with Light
- Utility Pole with Transformer
- Street Light
- Yard Light
- Electric Box
- Electric Transformer
- Traffic Sign
- Communication Pedestal
- Communication Manhole
- Communication Handhole
- Fiber Optic Manhole
- Fiber Optic Handhole
- Gas Valve
- Gas Manhole
- Gas Apparatus
- Fence Post or Guard Post
- Underground Storage Tank
- Above Ground Storage Tank
- Sign
- Satellite Dish
- Mailbox
- Sprinkler Head
- Irrigation Control Valve

EXISTING

PROPOSED




| | | | |
|--------------------------|-----------------|-----------|-----|
| MARK | REVISION | DATE | BY |
| Engineer: SJA | Checked By: LAO | | |
| Technician: LAO | Date: 5-14-2021 | Field Bk: | Pg: |
| Project No: 1120.0265.30 | | | |

PUBLIC IMPROVEMENTS CONTRACT NO: 9028
GENERAL NOTES PROJECT NO: 13479

CITY OF MADISON, WISCONSIN

5010 VOGES ROAD
 MADISON, WISCONSIN 53718
 608-638-0444 | www.snyder-associates.com

SNYDER & ASSOCIATES, INC.



SNYDER & ASSOCIATES

D-1

GENERAL NOTES

TYPE 2-A RAMP SHALL BE USED IN NEW DEVELOPMENT UNLESS OTHERWISE APPROVED BY THE CITY ENGINEER.
 DETAILS OF CONSTRUCTION, MATERIALS AND WORKMANSHIP NOT SHOWN ON THIS DRAWING SHALL CONFORM TO THE PERTINENT REQUIREMENTS OF THE STANDARD SPECIFICATIONS AND THE APPLICABLE SPECIAL PROVISIONS.
 RAMP SHALL BE BUILT AT 1/8" INCH OR FLATTER. WHEN NECESSARY, THE SIDEWALK ELEVATION MAY BE LOWERED TO MEET THE HIGH POINT ON THE RAMP.
 DETECTABLE WARNING FIELD SHALL BE MEASURED AND PAID BY THE SQUARE FOOT AS "CURB RAMP DETECTABLE WARNING FIELD".
 CURB RAMP DETECTABLE WARNING FIELD MATERIALS AND DEVICES SHALL BE APPROVED BY THE CITY ENGINEER. THE COLOR OF THE DETECTABLE WARNING FIELD SHALL BE SAFETY YELLOW OR APPROVED EQUAL AND IS INCIDENTAL TO THE BID ITEM OF "CURB RAMP DETECTABLE WARNING FIELD".
 SURFACE TEXTURE OF THE RAMP SHALL BE OBTAINED BY COARSE BRICKING TRANSVERSE TO THE SLOPE OF THE RAMP.
 THE DETECTABLE WARNING SURFACE SHALL BE LOCATED SO THAT THE EDGE NEAREST THE CURB LINE IS 6 INCHES MINIMUM AND 8 INCHES MAXIMUM FROM THE CURB LINE.

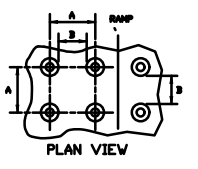
- ① THIS POINT IS AN EXTENSION OF OUTSIDE EDGE OF APPROACHING SIDEWALK WHERE IT MEETS THE BACK OF CONCRETE CURB.
- ② WHEN THIS DISTANCE IS LESS THAN 6'-0" IT MAY BE DIFFICULT TO ACHIEVE A 1/8" INCH SLOPE, OR FLATTER, ON THE RAMP. INCREASE CURB HEIGHT IN TRIANGLE AREA TO ACHIEVE 1/8" INCH SLOPE, OR FLATTER, ON RAMP. 2" MINIMUM CURB HEIGHT.

LEGEND

- 1' EXPANSION JOINT-SIDEWALK
- CONTRACTION JOINT FIELD LOCATED
- PAVEMENT MARKING CROSSWALK (VARY)
- ALTERNATIVE LAYOUT

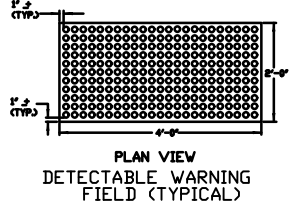
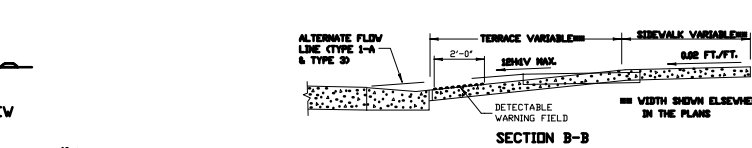
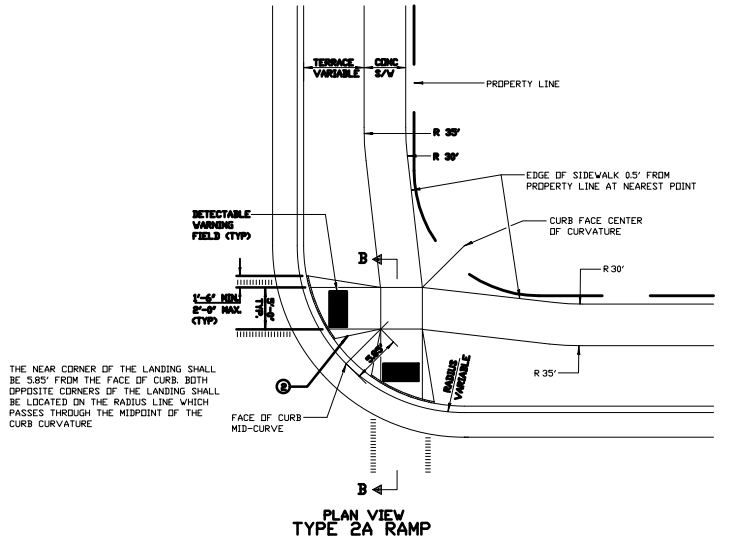
| | MIN. | MAX. |
|---|-------|------|
| A | 1.5' | 2.4' |
| B | 0.65' | 1.5' |
| C | " | " |
| D | 0.9' | 1.4' |

* THE C DIMENSION IS 90% TO 65% OF THE B DIMENSION.

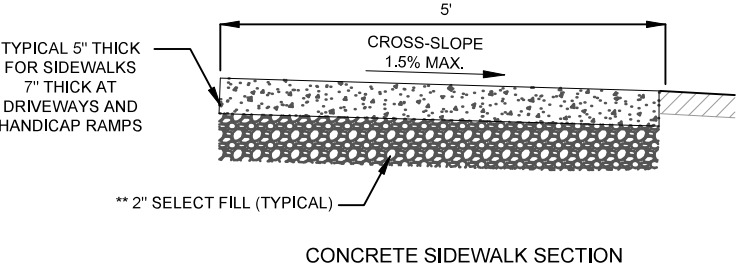


TRUNCATED DOMES
DETECTABLE WARNING
PATTERN DETAIL

NOTE: MATERIALS AND METHOD OF CONSTRUCTION FOR TRUNCATED DOMES SHALL BE SPECIFIED IN SPECIAL PROVISIONS OR AS REQUIRED BY THE CITY ENGINEER



2009
 CITY OF MADISON
 ENGINEERING DIVISION
**CURB RAMP GENERAL
 AND
 CURB RAMP TYPE 2-A**
 STANDARD DETAIL DRAWING 3.04



** 3" OF CRUSHED AGGREGATE BASE COURSE GRADATION 3 SHALL BE PLACED UNDER THE SIDEWALK WHERE THE CENTERLINE GRADE OF THE STREET EXCEEDS 5%.

TO OBTAIN LOCATION OF PARTICIPANTS' UNDERGROUND FACILITIES BEFORE YOU DIG IN WISCONSIN

CALL DIGGERS HOTLINE
1-800-242-8511
TOLL FREE

WIS. STATUTE 182.0175 (1974)
 REQUIRES MIN. OF 3 WORK DAYS
 NOTICE BEFORE YOU EXCAVATE

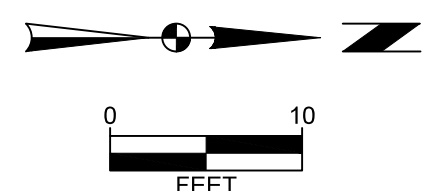
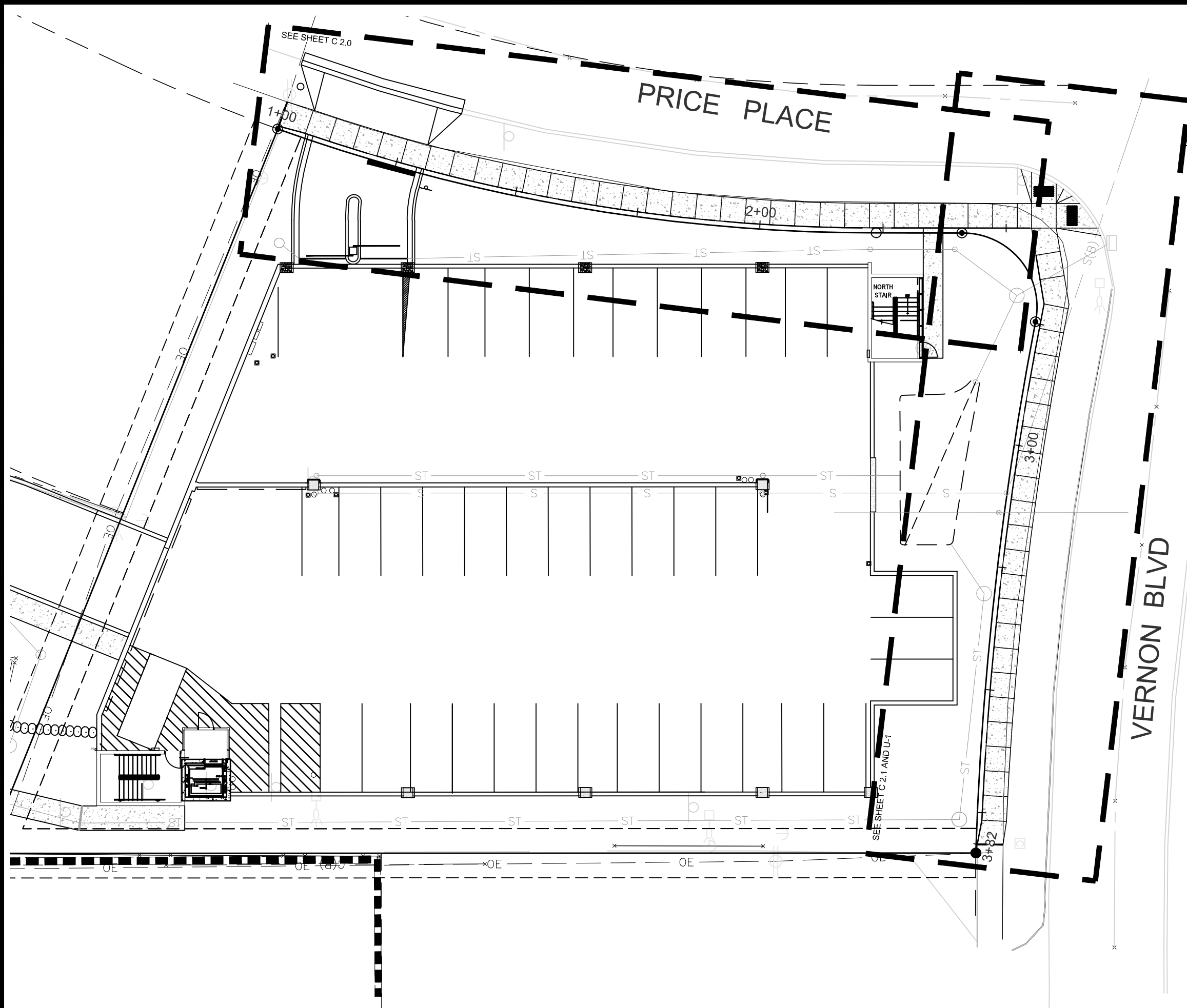
PUBLIC IMPROVEMENTS CONTRACT NO: 9028
 PROJECT NO: 13479
 DETAILS



CITY OF MADISON, WISCONSIN
 5010 VOGES ROAD
 MADISON, WISCONSIN 53718
 608-638-0444 | www.snyder-associates.com

| MARK | REVISION | DATE | BY |
|-----------------|-----------------|------|----|
| Engineer: SJA | Checked By: LAO | | |
| Technician: LAO | Date: 5-14-2021 | | |
| | Field Bk: | | |

Project No: 1120.0265.30



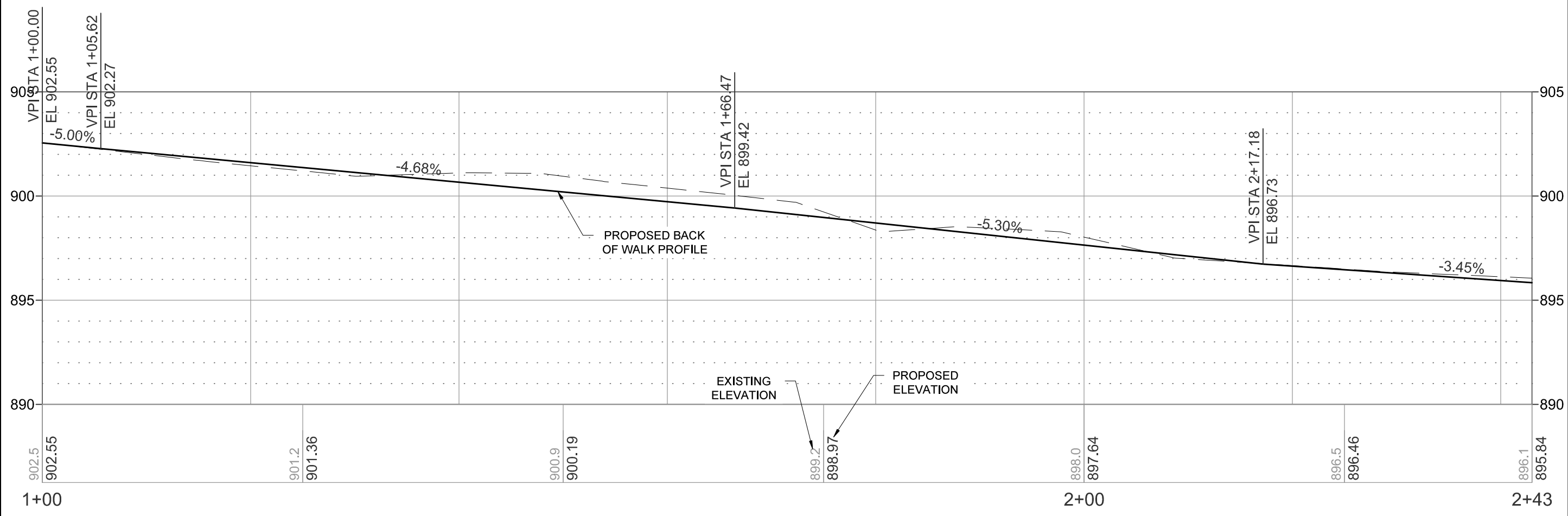
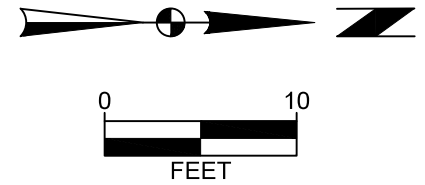
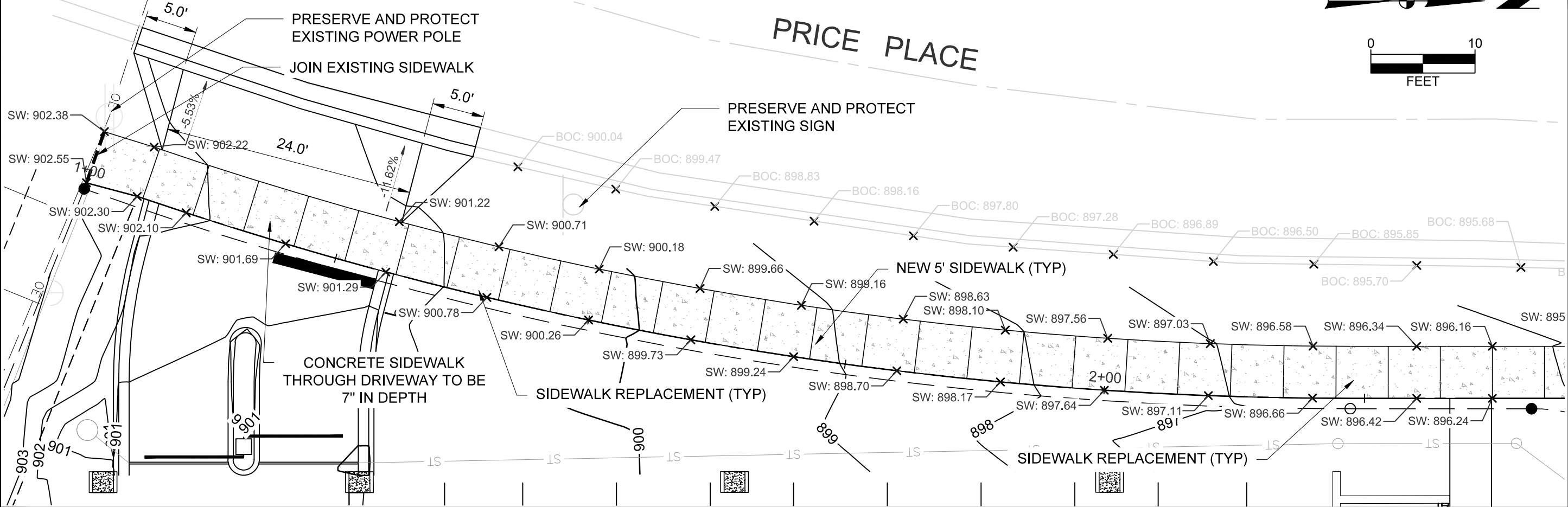

 TO OBTAIN LOCATION OF PARTICIPANTS' UNDERGROUND FACILITIES BEFORE YOU DIG IN WISCONSIN
CALL DIGGERS HOTLINE
1-800-242-8511
TOLL FREE
 WS. STATUTE 182.0175 (1974)
 REQUIRES MIN. OF 3 WORK DAYS
 NOTICE BEFORE YOU EXCAVATE

| | | | |
|--------------------------|-----------------|-----------|-----|
| MARK | REVISION | DATE | BY |
| Engineer: SJA | Checked By: LAO | | |
| Technician: LAO | Date: 5-14-2021 | Field Bk: | Pg: |
| Project No: 1120.0265.30 | | | |

PUBLIC IMPROVEMENTS CONTRACT NO: 9028
OVERALL SITE MAP PROJECT NO: 13479
 CITY OF MADISON, WISCONSIN
SNYDER & ASSOCIATES, INC.
 5010 VOGES ROAD
 MADISON, WISCONSIN 53718
 608-638-0444 | www.snyder-associates.com



RESTORE TERRACE AS NECESSARY WITH 6" TOPSOIL, SEED AND E-MAT.



| MARK | REVISION | DATE | BY |
|------|----------|------|----|
| | | | |
| | | | |
| | | | |
| | | | |

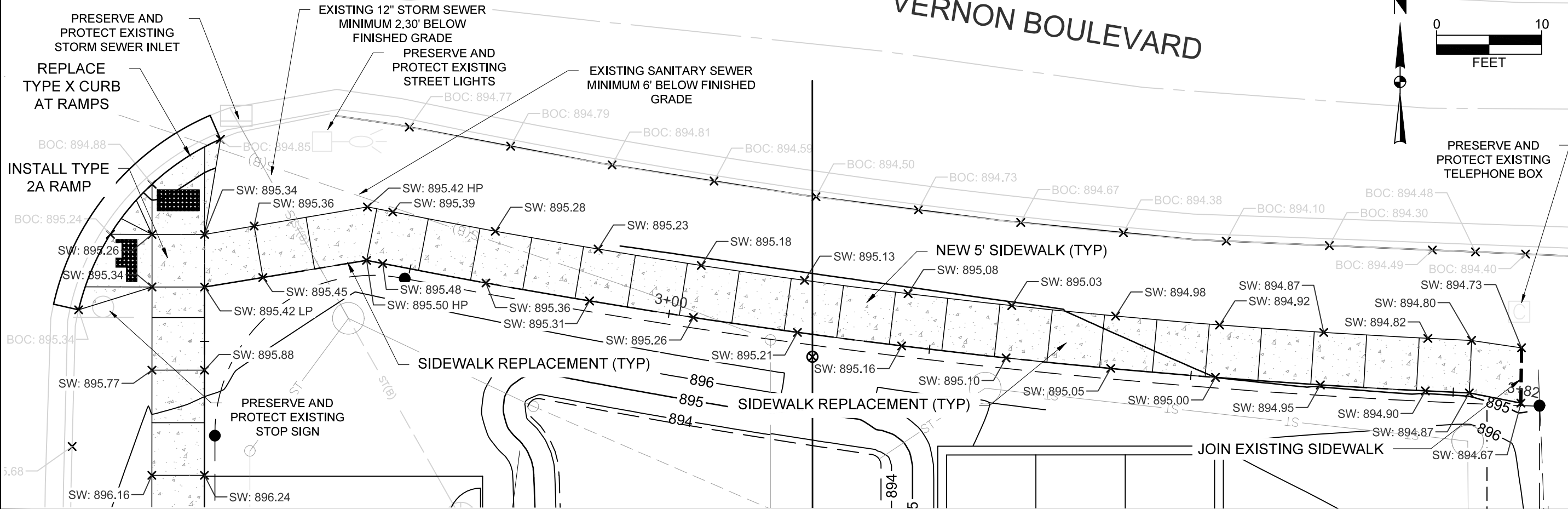
Engineer: SJA Checked By: LAO Date: 5-14-2021 Field Bk: Pg: Project No: 1120.0265.30

PUBLIC IMPROVEMENTS
CONTRACT NO: 9028
PROJECT NO: 13479
SIDWALK PLAN & PROFILE
CITY OF MADISON, WISCONSIN
SNYDER & ASSOCIATES, INC.
 5010 VOGES ROAD
 MADISON, WISCONSIN 53718
 608-638-0444 | www.snyder-associates.com

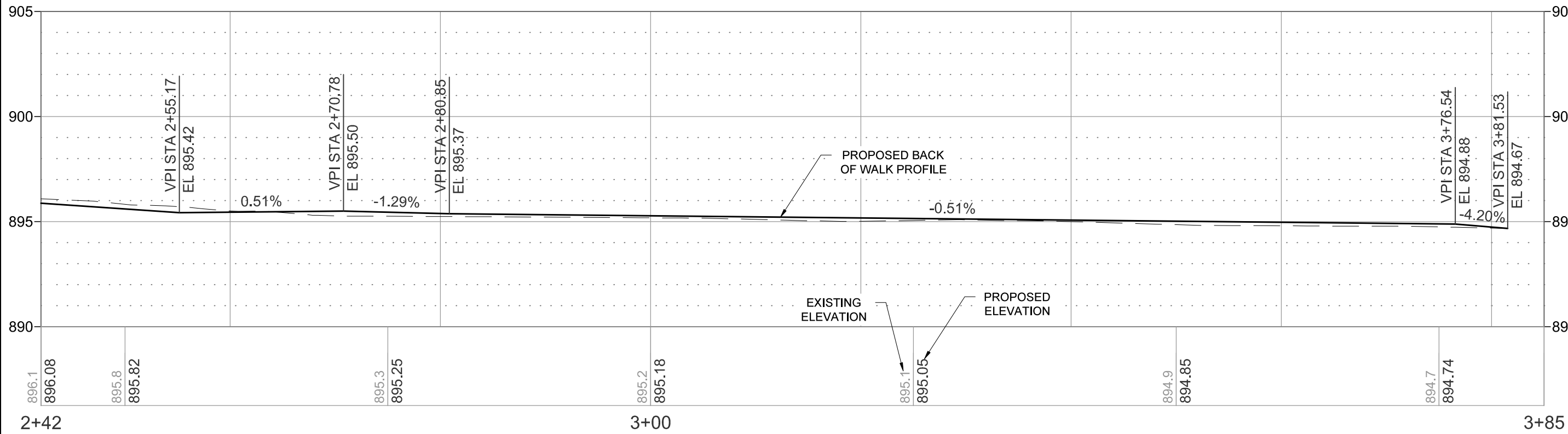
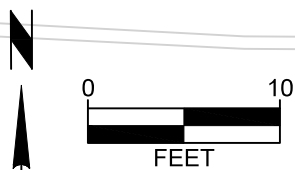
SNYDER & ASSOCIATES

P-2

RESTORE TERRACE AS NECESSARY WITH 6" TOPSOIL, SEED AND E-MAT.



VERNON BOULEVARD



| MARK | REVISION | DATE | BY |
|-----------------|-----------------|-----------|-----|
| Engineer: SJA | Checked By: LAO | | |
| Technician: LAO | Date: 5-14-2021 | Field Bk: | Pg: |

Project No: 1120.0265.30

CONTRACT NO: 9028
PROJECT NO: 13479

CITY OF MADISON, WISCONSIN

5010 VOGES ROAD
MADISON, WISCONSIN 53718
608-638-0444 | www.snyder-associates.com

SNYDER & ASSOCIATES, INC.



