

Madison, Wisconsin

# CITY OF MADISON

## CITY ENGINEERING DIVISION

### DEPARTMENT OF PUBLIC WORKS

# PLAN OF PROPOSED IMPROVEMENT

## MADISON YARDS AT HILL FARMS : PHASE 3

CITY PROJECT NO. 13494  
CONTRACT NO. 9049

**INDEX OF SHEETS**

|                     |       |  |
|---------------------|-------|--|
| SHEET NO.           | D-1   | STANDARD NOTES                         |
| SHEET NO.           | D-2   | TYPICAL SECTIONS                       |
| SHEET NO.           | E1-E2 | ELECTRICAL PLAN                        |
| SHEET NO.           | P-1   | PLAN & PROFILE - SHEBOYGAN AVE         |
| SHEET NO.           | P-2   | SIDEWALK PLAN & PROFILE - N. SEGOE AVE |
| SHEET NO.           | X1-X8 | CROSS SECTION - SHEBOYGAN AVE          |
| NO MAINTENANCE PLAN |       |  |

PUBLIC IMPROVEMENT PROJECT APPROVED

AUGUST 3, 2021

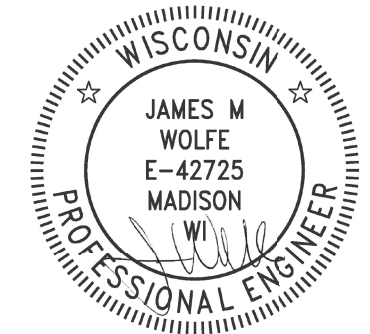
BY THE COMMON COUNCIL OF MADISON, WISCONSIN

PUBLIC IMPROVEMENT DESIGN APPROVED BY:

*N- Greg Fries* May 19, 2022

City Engineer Date

STREET GRADES DESIGNED BY:



May 19, 2022

ELECTRICAL DESIGNED BY:

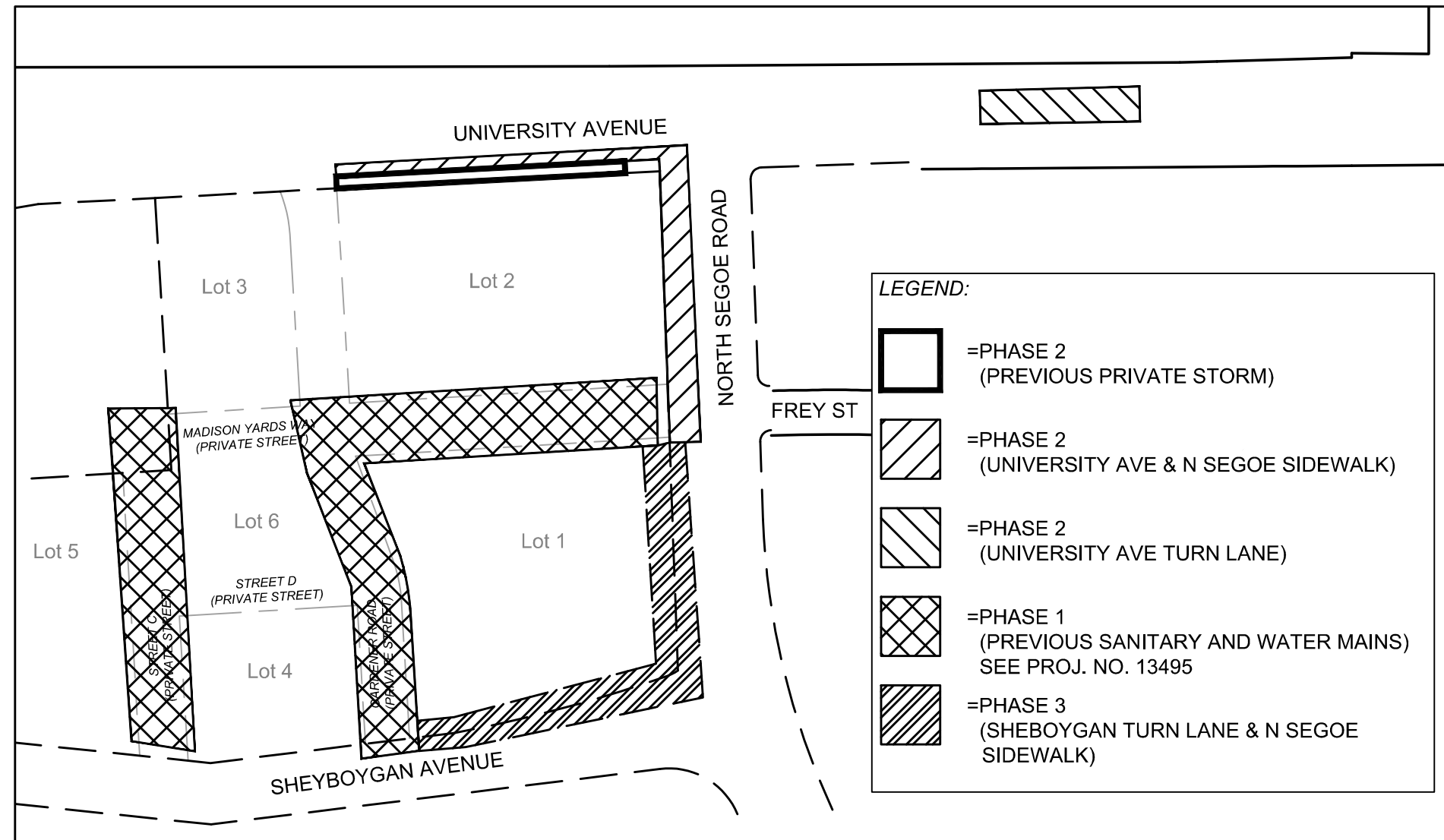


May 19, 2022

STREET GEOMETRICS DESIGNED BY:



May 19, 2022



PLOT SCALE: 1 IN. = 1 FT. XREF

PLOT NAME: ---

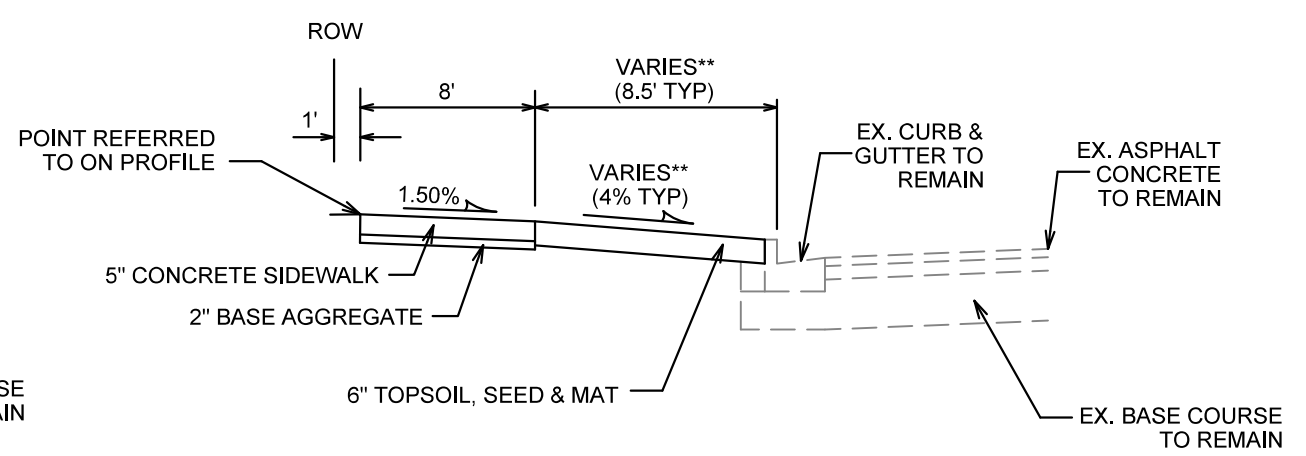
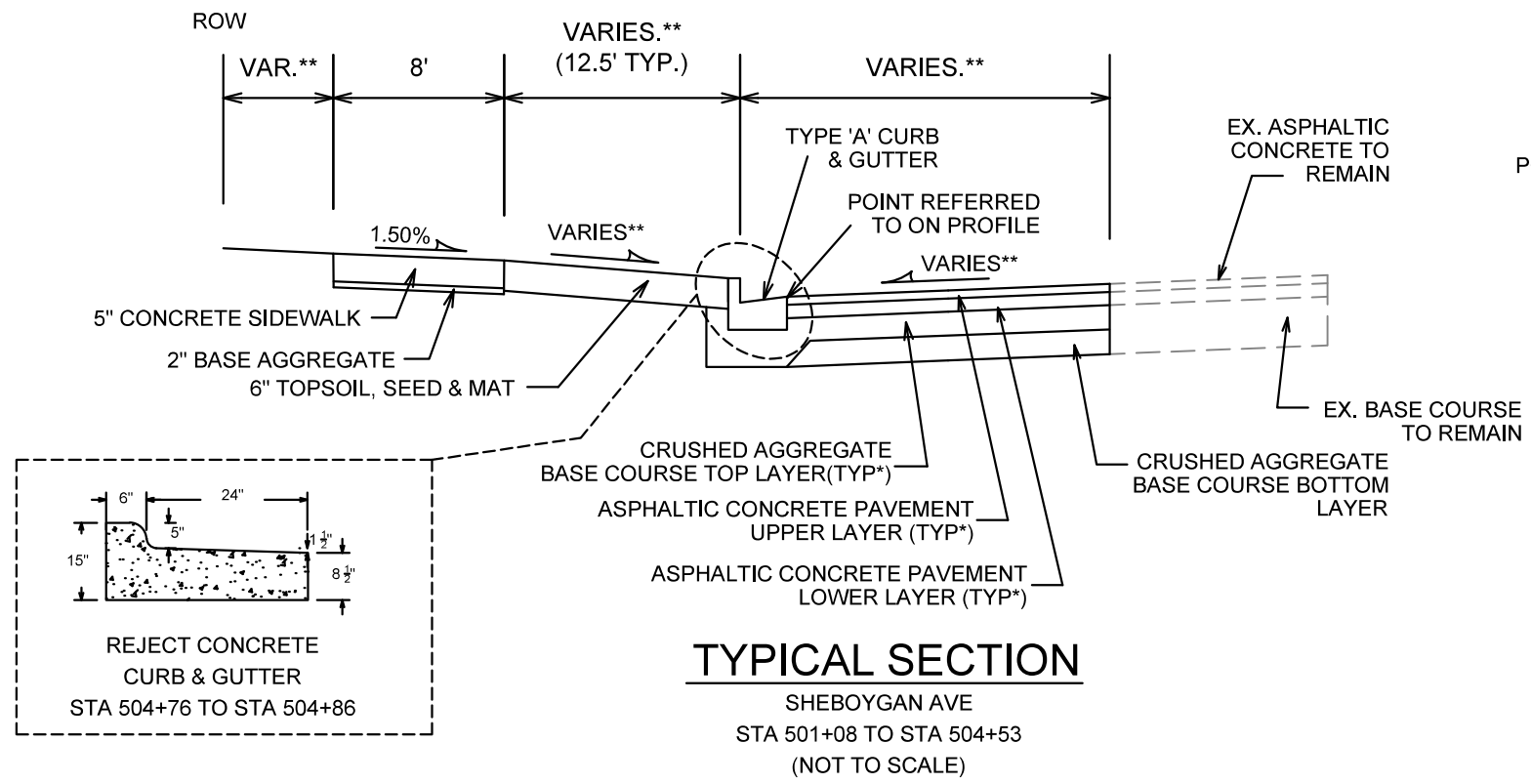
REV. DATE: 5/5/2022 12:58 PM

ORIGINATOR: CITY\_OF\_MADISON



|                  |          |                   |              |
|------------------|----------|-------------------|--------------|
| MARK             | REVISION | DATE              | BY           |
| 13494            |          | 5/11/2022 1:58 PM |              |
| Designed By: LMC |          |                   | Scale: ##### |
| 13494            |          |                   | D-2          |

13494  
MADISON, WI  
9049  
CONTRACT NO:  
MADISON YARDS AT HILL FARMS PHASE 3  
M:\DESIGN\Projects\13495\CAD\Streets\13494EN-Details.dwg



**TYPICAL SECTION**

N SEGOE ROAD  
STA 203+00 TO STA 205+25  
(NOT TO SCALE)

- NOTES:
- \* N SEGOE ROAD AND SHEBOYGAN AVENUE SHALL BE CONSTRUCTED AS TYPE 'C' PAVEMENT PER CITY OF MADISON MINIMUM PAVEMENT DESIGN †
  - \*\* SEE PLAN & CROSS SECTIONS FOR DETAILS AND DIMENSIONS
  - THE DEVELOPER SHALL BE RESPONSIBLE FOR ALL SURFACE PAVING AS PART OF THIS PROJECT

CITY OF MADISON MINIMUM PAVEMENT DESIGN †

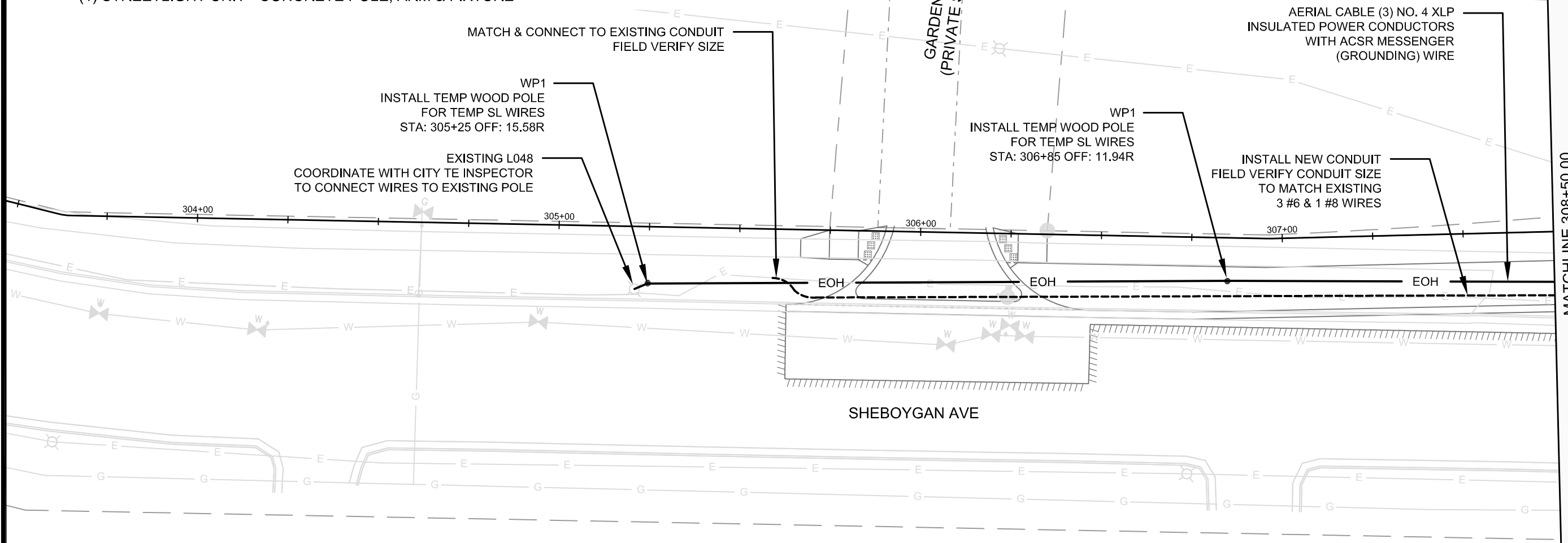
| TYPE | CRUSHED AGGREGATE BASE COURSE |                         | ASPHALTIC CONCRETE PAVEMENT |           |                |           |
|------|-------------------------------|-------------------------|-----------------------------|-----------|----------------|-----------|
|      | LOWER LAYER GRADATION 1       | UPPER LAYER GRADATION 2 | LOWER LAYER                 |           | UPPER LAYER    |           |
|      |                               |                         | TYPE                        | THICKNESS | TYPE           | THICKNESS |
| A    | 6"                            | 6"                      | 4 LT 58-28 S                | 1.75"     | 4 LT 58-28 S   | 1.75"     |
| B    | 6"                            | 6"                      | 3 LT 58-28 S                | 2.50"     | 4 LT 58-28 S   | 2.00"     |
| C    | 6"                            | 6"                      | 3 MT 58-28 S/H              | 3.50"     | 4 MT 58-28 S/H | 2.00"     |



13494  
D-2

GENERAL ELECTRICAL NOTES

1. ALL LOCATIONS ARE APPROXIMATE, THE TRAFFIC ENGINEER SHALL APPROVE FINAL LOCATIONS, INCLUDING SETBACK IN THE FIELD, AFTER CONTRACTOR SURVEYS STAKING. THE CONTRACTOR SHALL NOTIFY GRETCHEN AVILES PINEIRO (GAVILESPINEIRO@CITYOFMADISON.COM), AT LEAST 24HOURS IN ADVANCE OF NEEDING BASE LOCATIONS MARKED.
2. BASES INSTALLED IN TERRACE SHALL BE 4' FROM FACE OF CURB UNLESS OTHERWISE NOTED, SUBJECT TO NOTE 1 ABOVE.
3. THE CONTRACTOR SHALL DO ALL WORK IN ACCORDANCE WITH "CITY OF MADISON STANDARD SPECIFICATIONS FOR PUBLIC WORKS CONSTRUCTION, LATEST EDITION" AND ADDENDUMS THERETO. [cityofmadison.com/business/pw/specs.cfm](http://cityofmadison.com/business/pw/specs.cfm)
4. THE CONTRACTOR SHALL CALL CITY TRAFFIC ENGINEERING INSPECTOR (395-1975) AT THE TRAFFIC ENGINEERING SHOP AT LEAST 24-HOURS IN ADVANCE OF BURYING CONDUIT TO ARRANGE FOR INSPECTION. ANY WORK COMPLETED WITHOUT INSPECTION IS SUBJECT TO REJECTION.
5. THE CONTRACTOR SHALL CALL CITY TRAFFIC ENGINEERING INSPECTOR (395-1975) PRIOR TO REMOVING OR CONNECTING TO EXISTING CONDUITS, HANDHOLES OR POLES.
6. THE CONTRACTOR SHALL ARRANGE FOR PICKUP OF THE FOLLOWING CITY MATERIALS:  
 (1) STREETLIGHT UNIT - CONCRETE POLE, ARM & FIXTURE



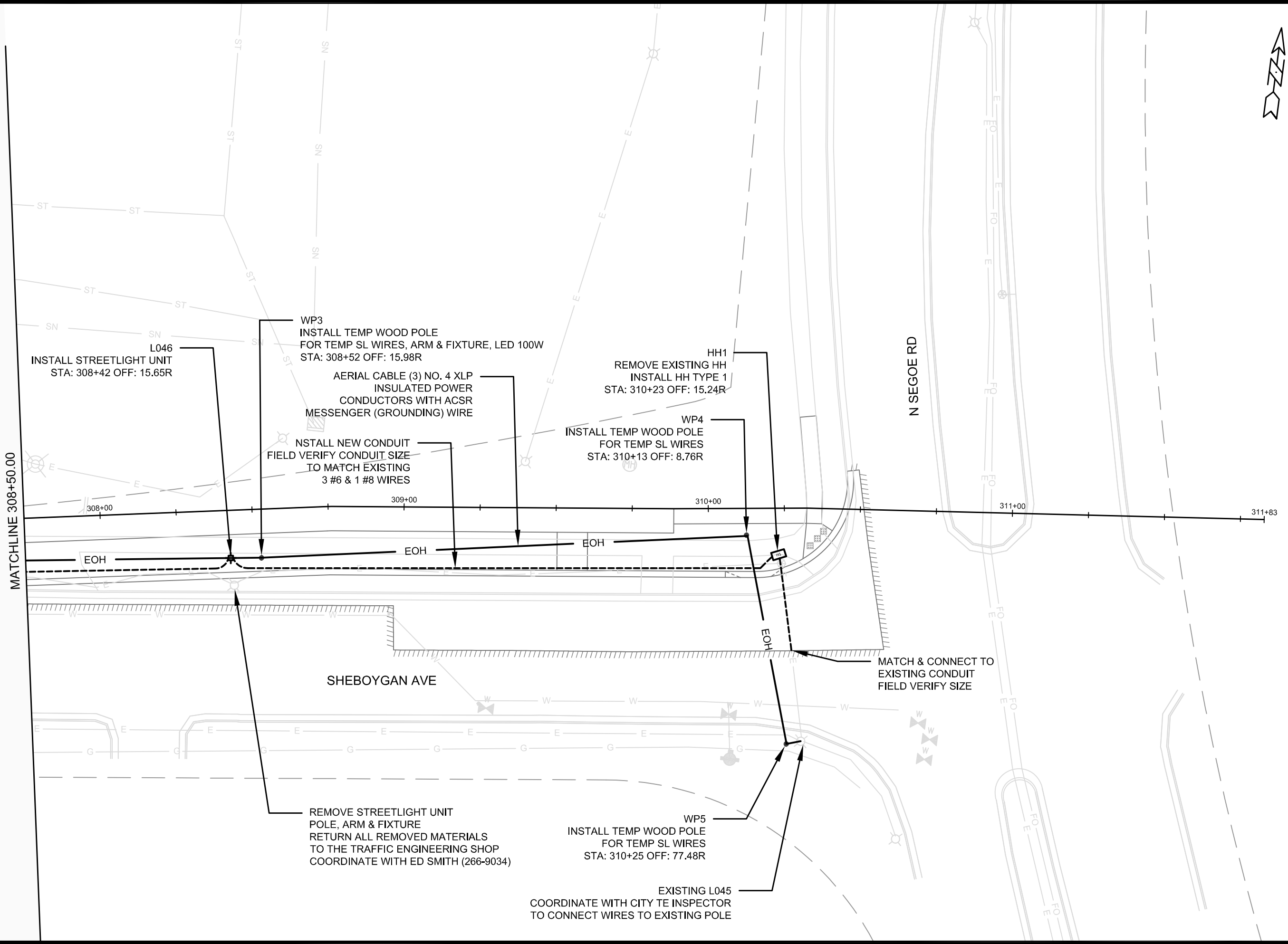
| MARK  | REVISION        | DATE                    | BY              |
|-------|-----------------|-------------------------|-----------------|
| 13494 | Designd By: GMA | Date: 5/6/2022 11:42 AM | Scale: 1" = 30' |
|       |                 |                         |                 |
|       |                 |                         |                 |
|       |                 |                         |                 |
|       |                 |                         |                 |

13494  
 MADISON, WI  
 CONTRACT NO: 9049

ELECTRICAL PLAN  
 MADISON YARDS AT HILL FARMS - PHASE 3  
 M:\DESIGN\Projects\13495\CAD\Traffic\13495TE-Electrical.dwg



13494  
 E-1



MATCHLINE 308+50.00



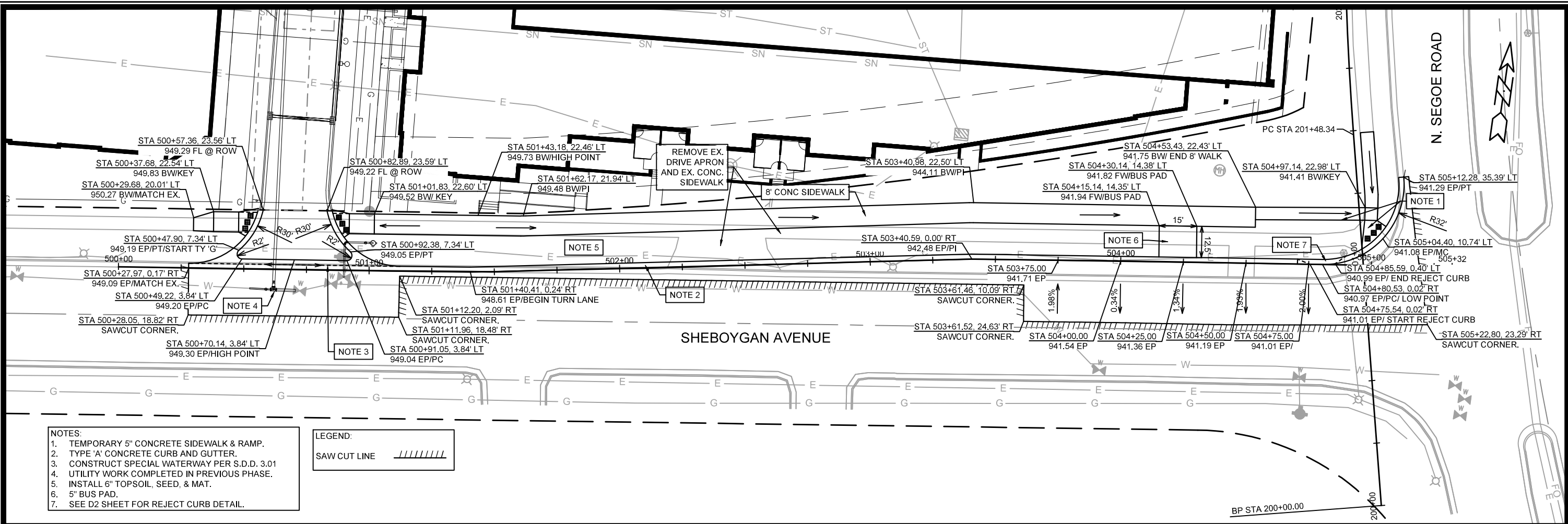
|                  |                   |      |                 |
|------------------|-------------------|------|-----------------|
| MARK             | REVISION          | DATE | BY              |
| 13494            | 5/6/2022 11:51 AM |      |                 |
| Designed By: GMA |                   |      | Scale: 1" = 30' |

13494  
 MADISON, WI  
 CONTRACT NO: 9049

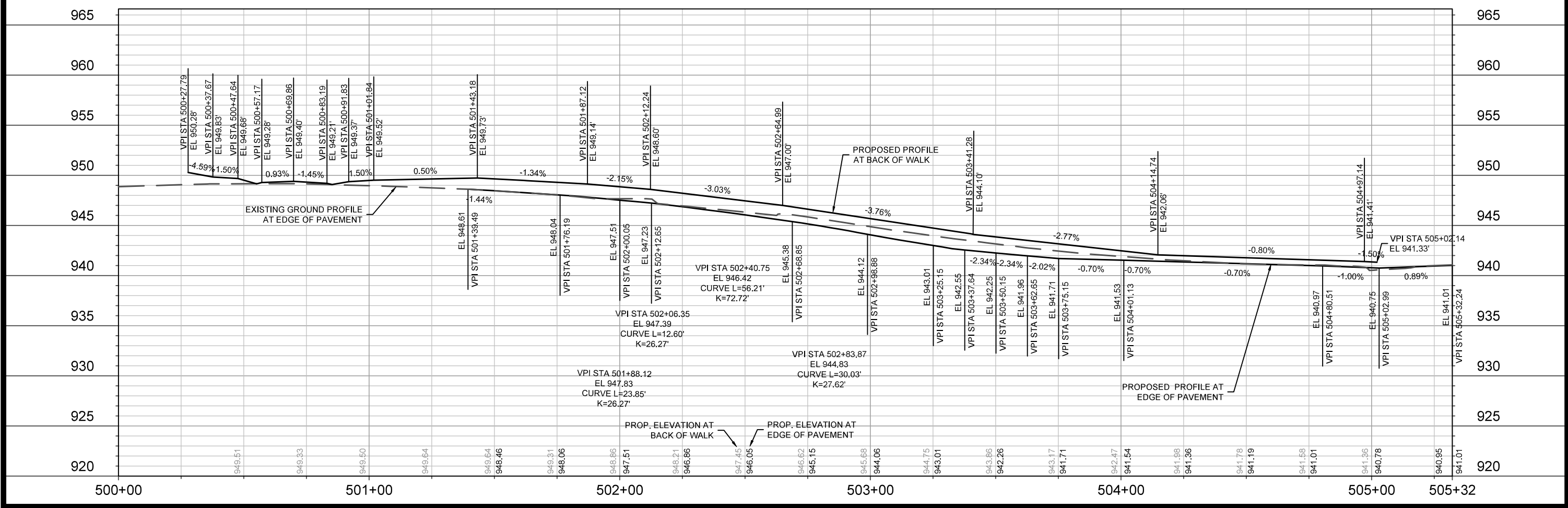
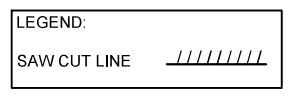
ELECTRICAL PLAN  
 MADISON YARDS AT HILL FARMS - PHASE 3  
 M:\DESIGN\Projects\13495\CAD\Traffic\13495TE-Electrical.dwg



13494  
 E-2



- NOTES:
1. TEMPORARY 5" CONCRETE SIDEWALK & RAMP.
  2. TYPE 'A' CONCRETE CURB AND GUTTER.
  3. CONSTRUCT SPECIAL WATERWAY PER S.D.D. 3.01
  4. UTILITY WORK COMPLETED IN PREVIOUS PHASE.
  5. INSTALL 6" TOPSOIL, SEED, & MAT.
  6. 5" BUS PAD.
  7. SEE D2 SHEET FOR REJECT CURB DETAIL.



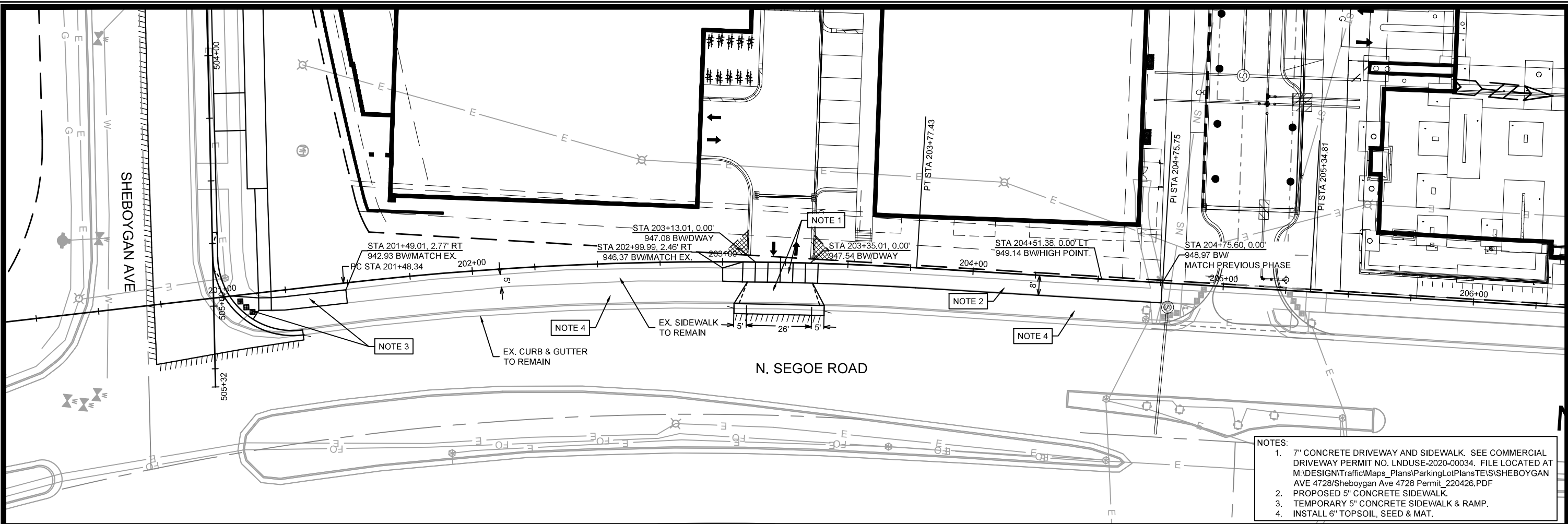
|       |                  |                         |
|-------|------------------|-------------------------|
| 13494 | DATE             | BY                      |
| 13494 | REVISION         | DATE                    |
| 13494 | DESIGNED BY: LMC | DATE: 5/18/2022 9:58 AM |
| 13494 | SCALE: 1" = 40'  |                         |

13494  
MADISON, WI  
9049  
CONTRACT NO:

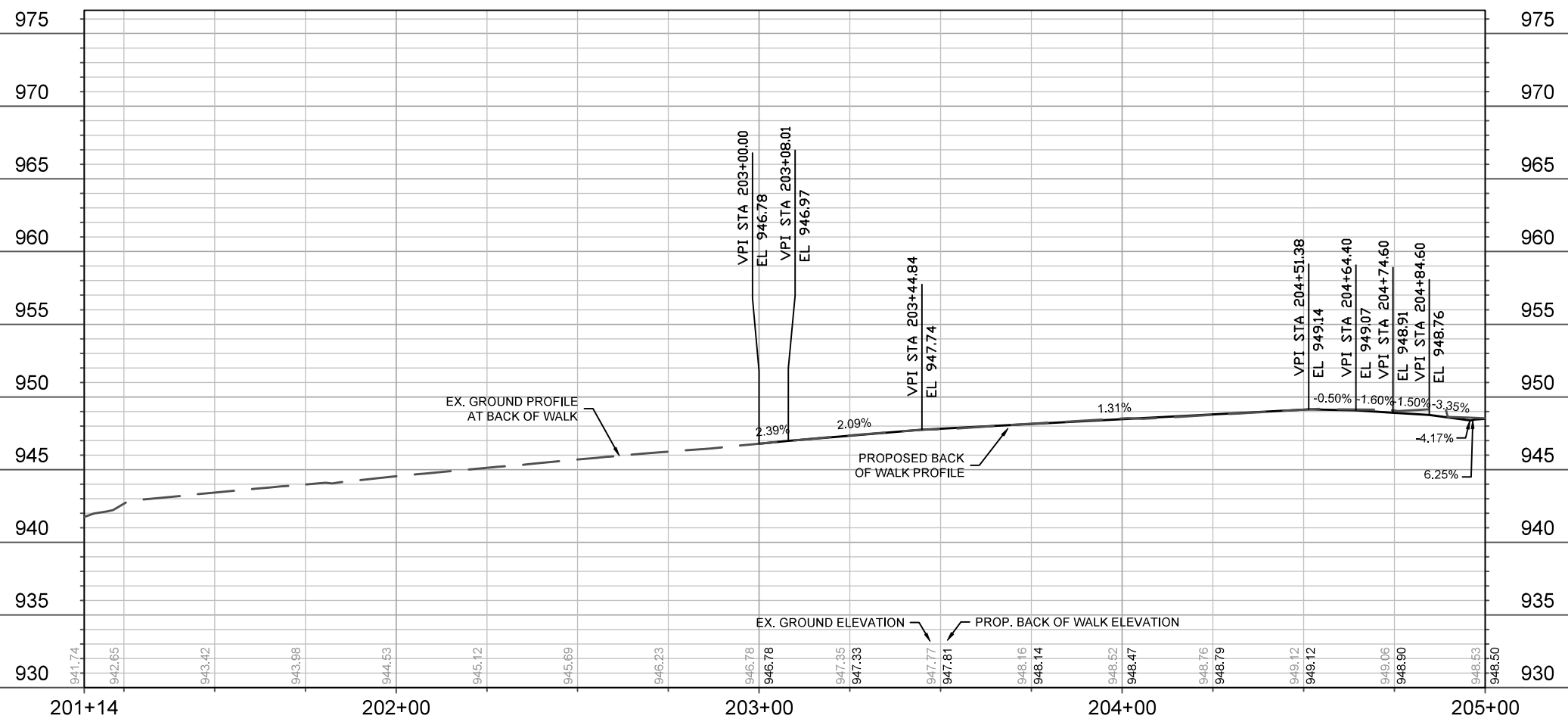
PLAN & PROFILE - SHEBOYGAN AVE  
MADISON YARDS AT HILL FARMS - PHASE 3  
M:\DESIGN\Projects\13494\CAD\Streets\13494 - Phase 3 - PnP.dwg

13494  
P-1

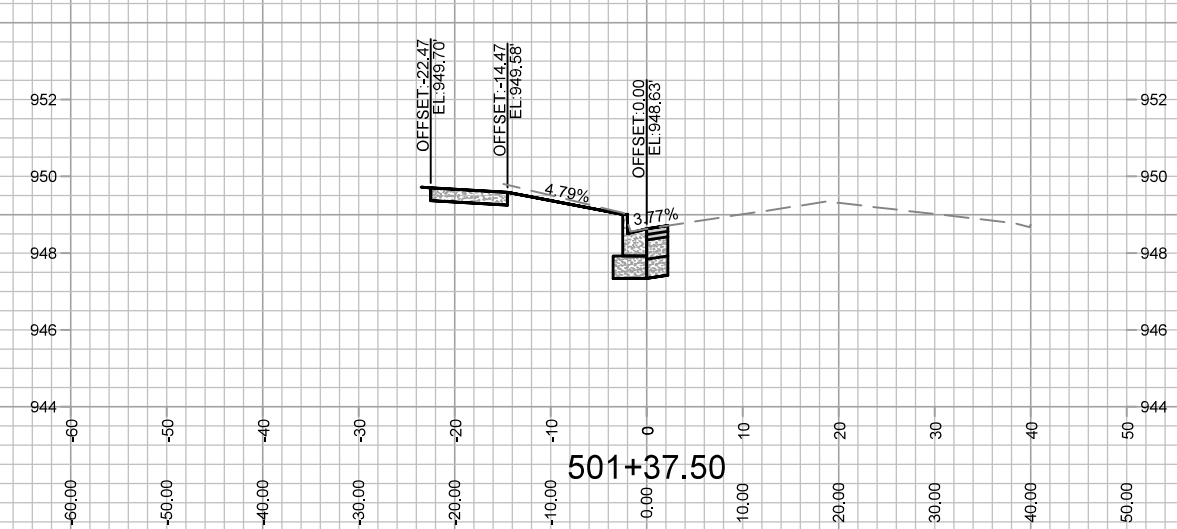
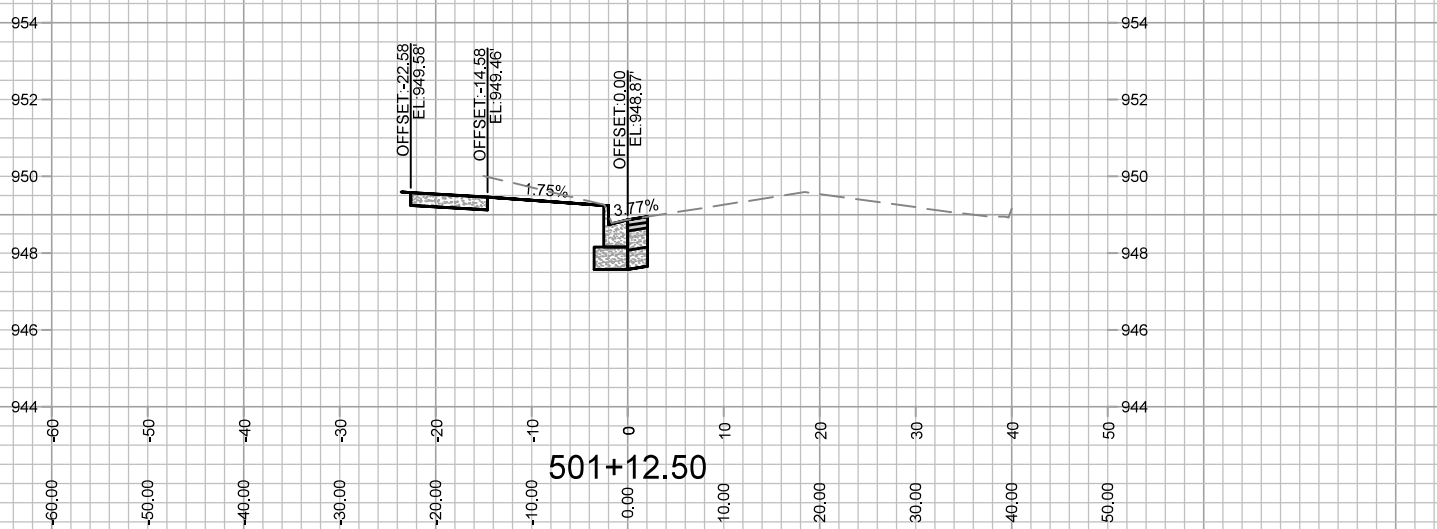
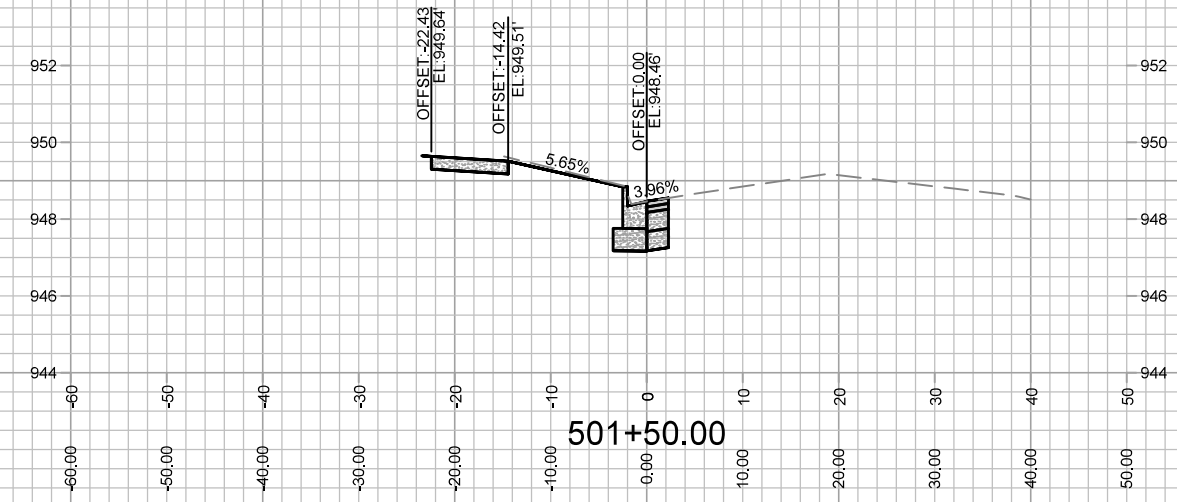
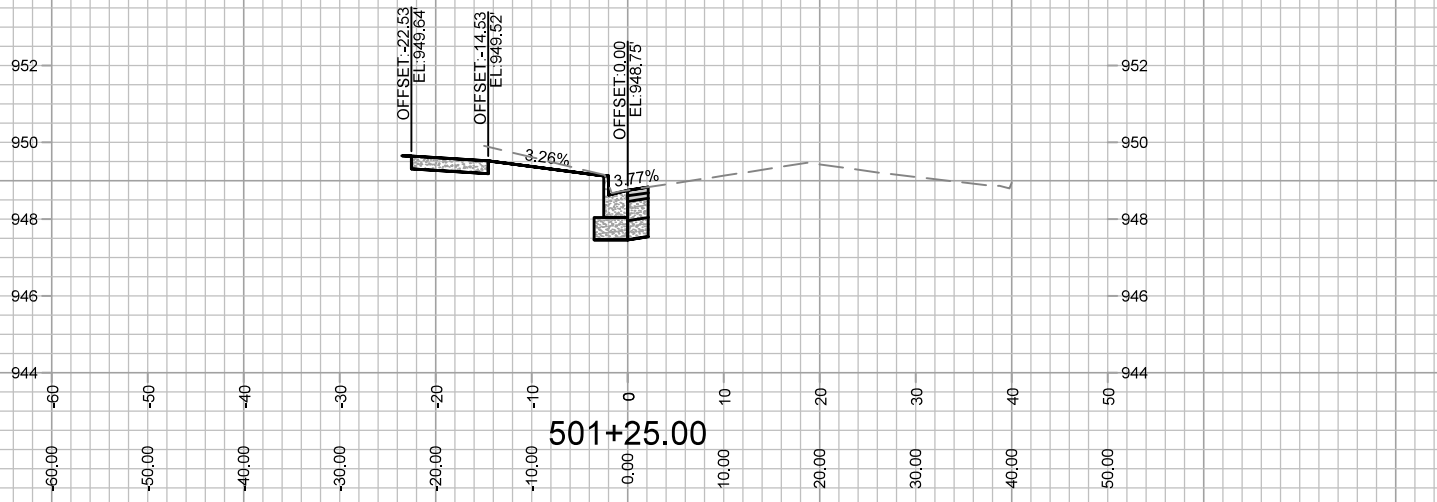




- NOTES:
- 7" CONCRETE DRIVEWAY AND SIDEWALK. SEE COMMERCIAL DRIVEWAY PERMIT NO. LNDUSE-2020-00034. FILE LOCATED AT M:\DESIGN\Traffic\Maps\_Plans\ParkingLotPlans\TE\S\SHEBOYGAN AVE 4728/Sheboygan Ave 4728 Permit\_220426.PDF
  - PROPOSED 5" CONCRETE SIDEWALK.
  - TEMPORARY 5" CONCRETE SIDEWALK & RAMP.
  - INSTALL 6" TOPSOIL, SEED & MAT.



|   |    |          |      |    |
|---|----|----------|------|----|
| DATE  | BY | REVISION | DATE | BY |
|   |    |          |      |    |
| MARK<br>13494<br>P-2  |    |          |      |    |
| 13494<br>MADISON, WI<br>9049<br>CONTRACT NO.:   |    |          |      |    |
| 13494<br>MADISON, WI<br>9049<br>CONTRACT NO.:   |    |          |      |    |
| SIDEWALK PLAN & PROFILE - N. SEGOE<br>MADISON YARDS AT HILL FARMS - PHASE 3<br>M:\DESIGN\Projects\13495\CAD\Streets\13494 - Phase 3 - PnP.dwg |    |          |      |    |
|   |    |          |      |    |
| 13494<br>P-2  |    |          |      |    |



| MARK | REVISION | DATE | BY |
|------|----------|------|----|
|      |          |      |    |
|      |          |      |    |
|      |          |      |    |

13494  
 MADISON, WI  
 9049  
 CONTRACT NO:

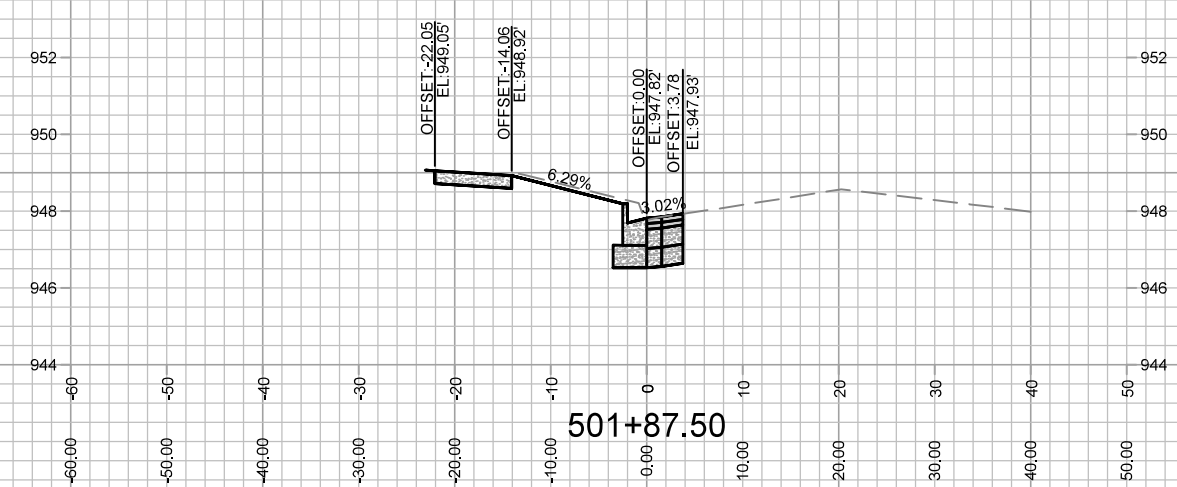
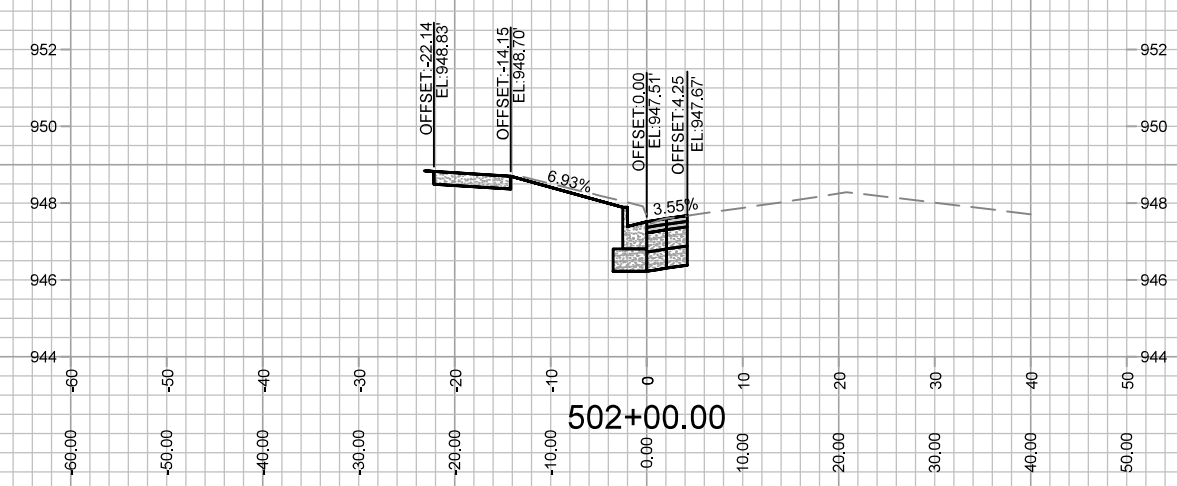
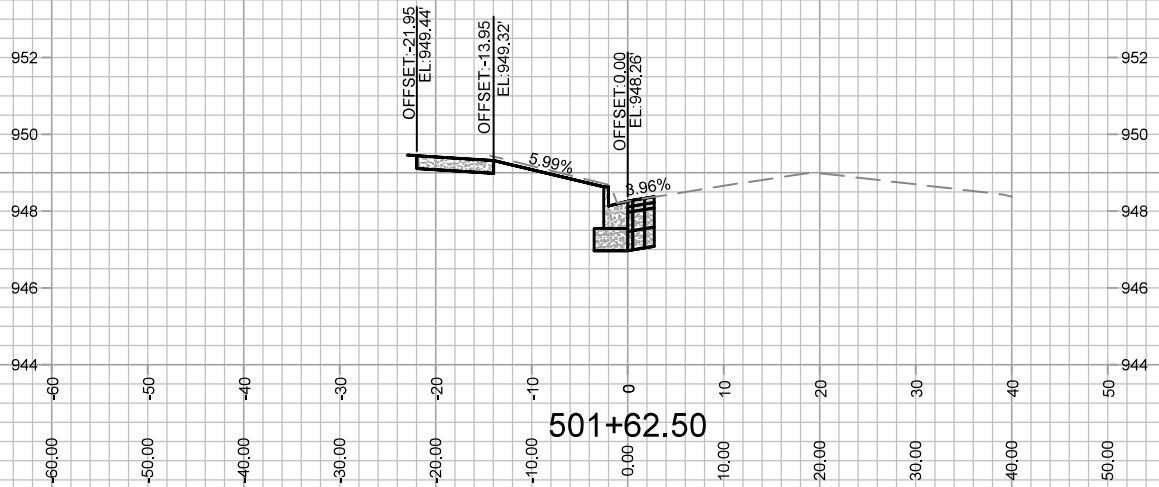
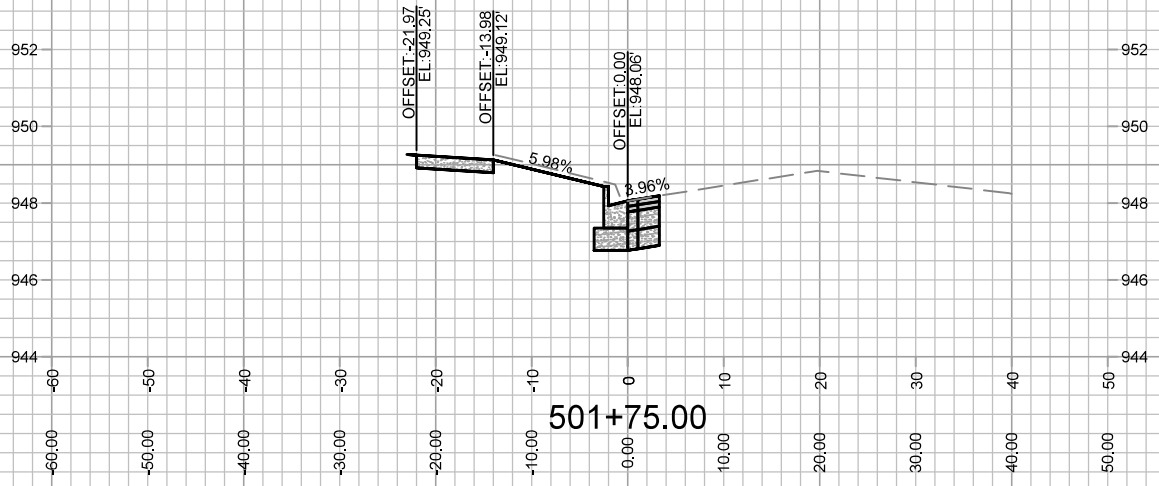
CROSS SECTION - SHEBOYGAN AVE  
 MADISON YARDS AT HILL FARMS PHASE 3  
 M:\DESIGN\Projects\13495\CAD\Streets\13495EN-AI\Prof&Corridor\_Setup.dwg



13494  
 X-1

Designed By: LMC  
 13494  
 Date: 5/11/2022 11:58 AM  
 Scale: 1:20  
 X-1





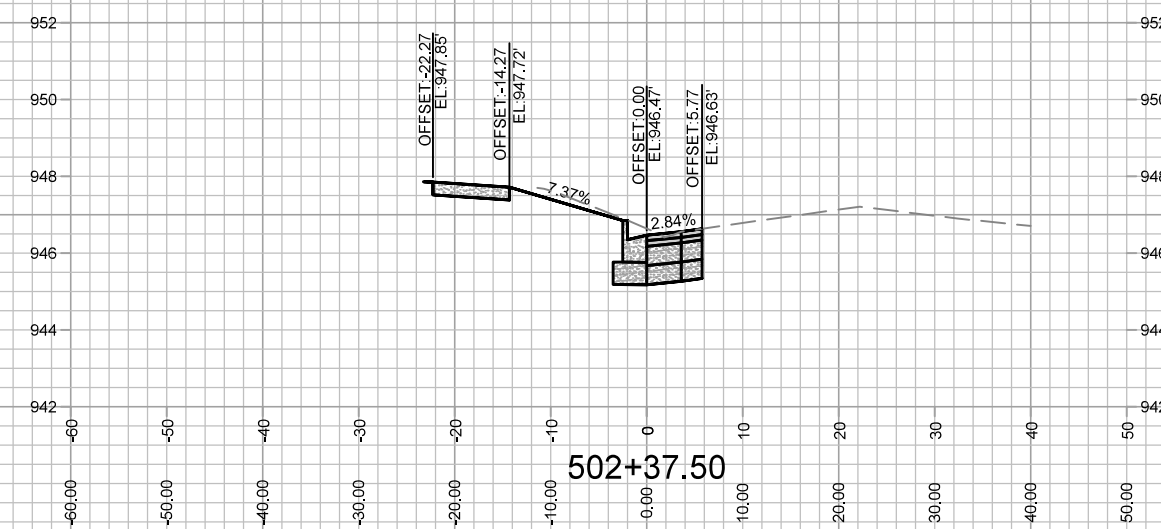
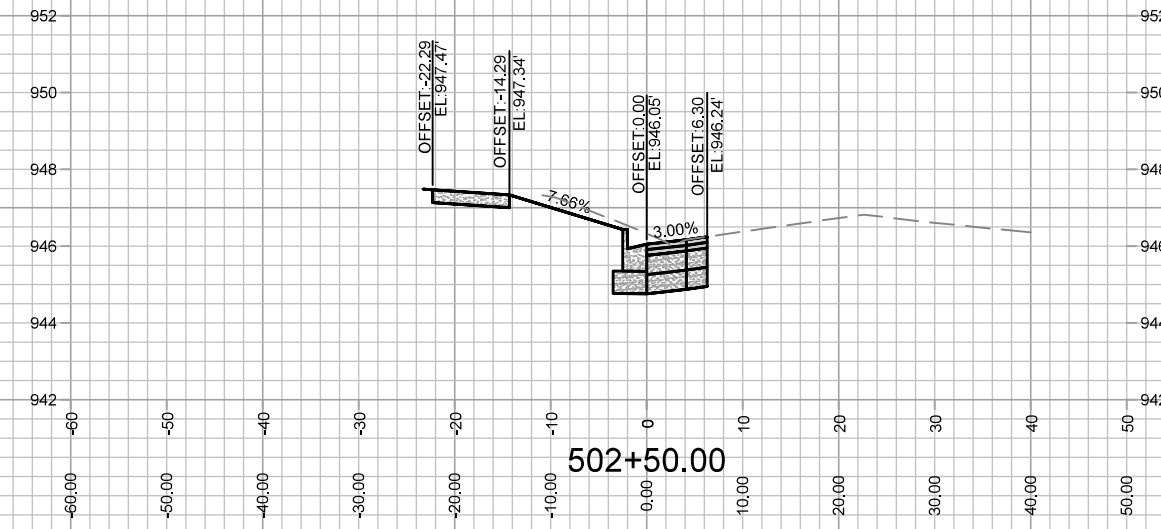
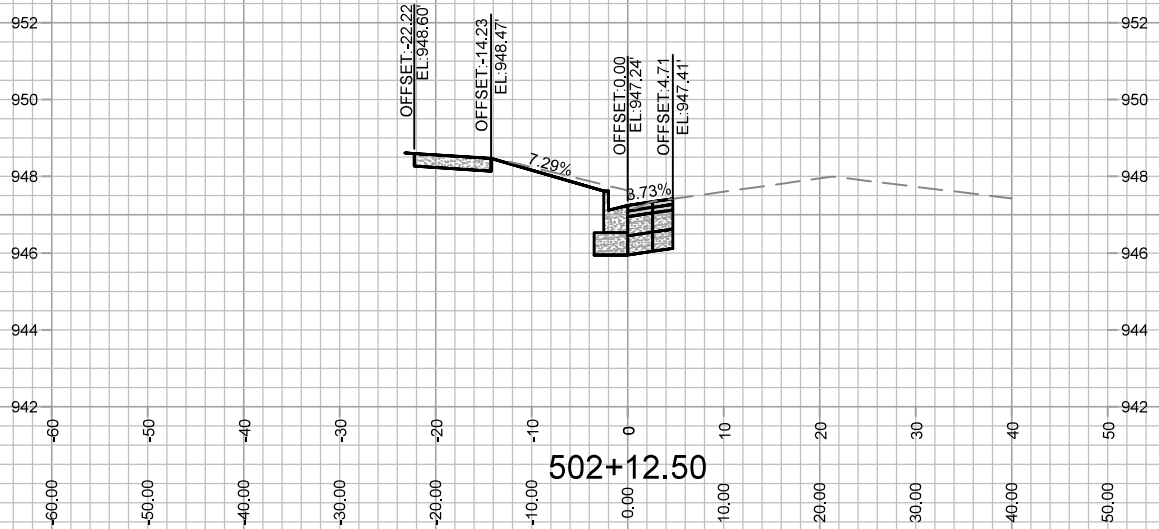
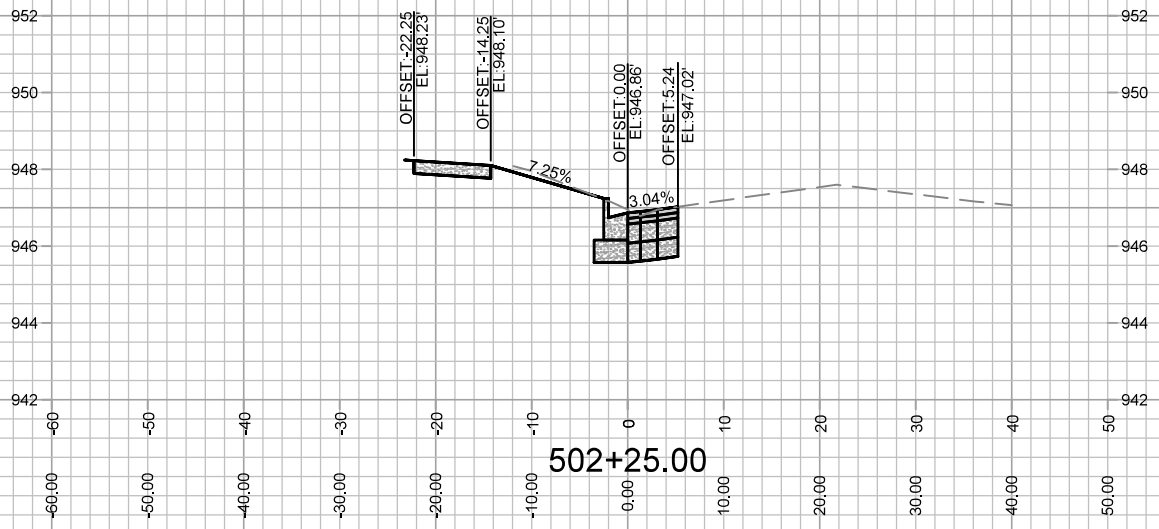
|                  |                    |             |    |
|------------------|--------------------|-------------|----|
| MARK             | REVISION           | DATE        | BY |
| 13494            | 5/11/2022 11:58 AM |             |    |
| Designed By: LMC |                    | Scale: 1:20 |    |
| 13494            |                    | X-2         |    |

13494  
MADISON, WI  
9049  
CONTRACT NO:

CROSS SECTION - SHEBOYGAN AVE  
MADISON YARDS AT HILL FARMS PHASE 3  
M:\DESIGN\Projects\13495\CAD\Streets\13495EN-AI\Prof&Corridor\_Setup.dwg



13494  
X-2



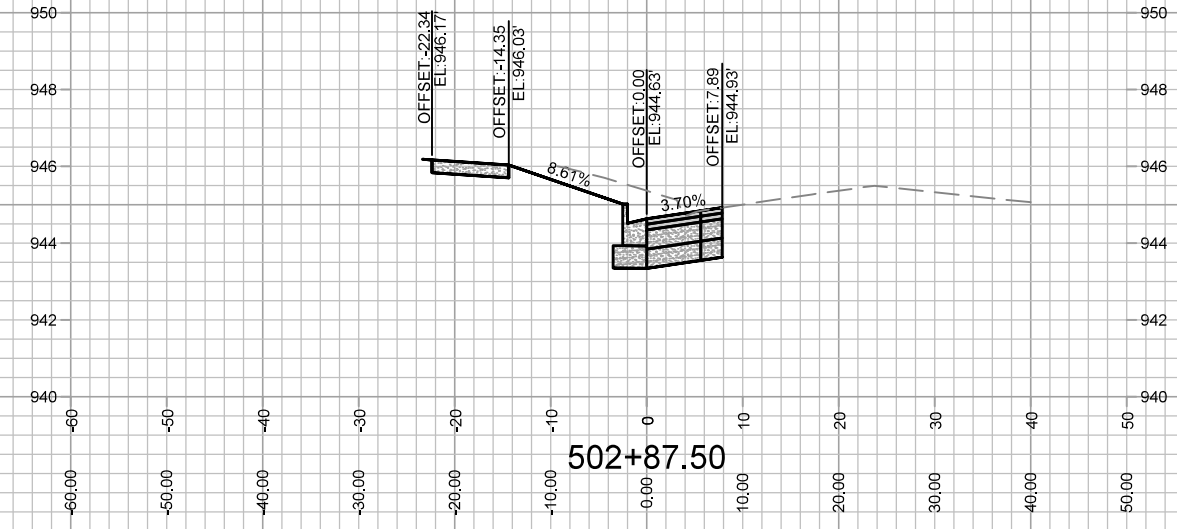
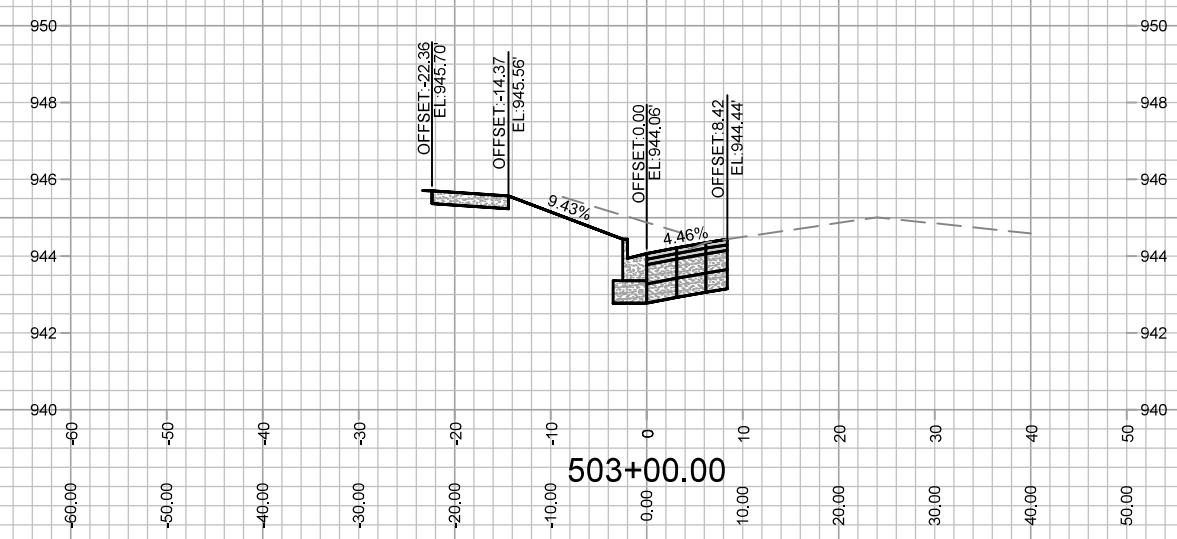
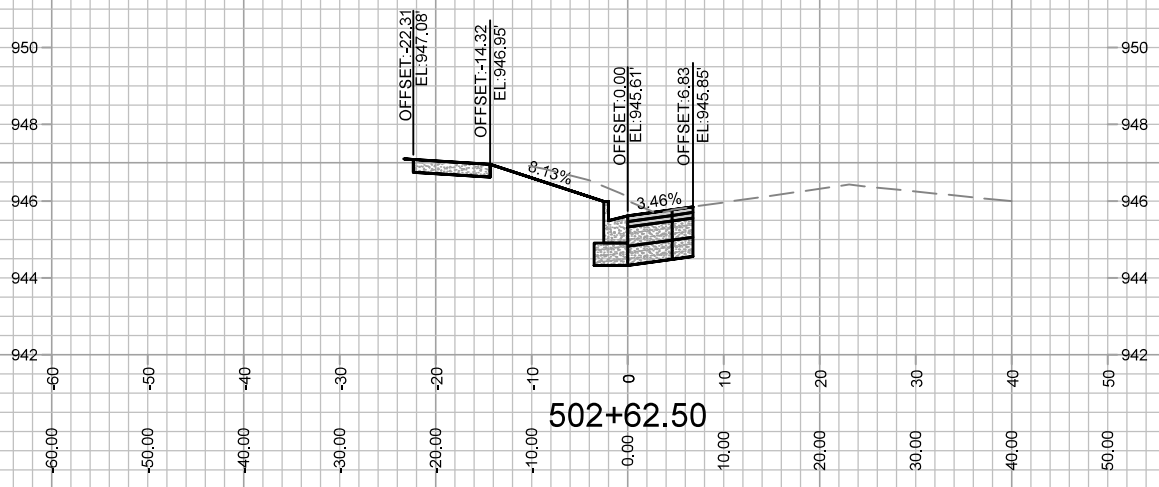
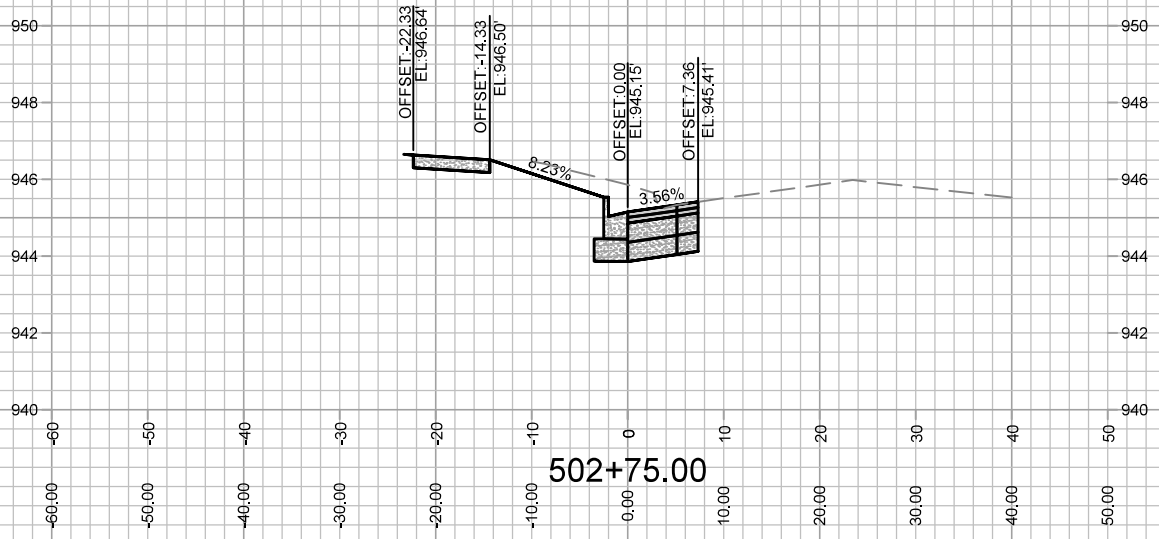
|                  |                    |             |    |
|------------------|--------------------|-------------|----|
| MARK             | REVISION           | DATE        | BY |
| 13494            | 5/11/2022 11:58 AM |             |    |
| Designed By: LMC |                    | Scale: 1:20 |    |
| 13494            |                    | X-3         |    |

13494  
MADISON, WI  
9049  
CONTRACT NO:

CROSS SECTION - SHEBOYGAN AVE  
MADISON YARDS AT HILL FARMS PHASE 3  
M:\DESIGN\Projects\13495\CAD\Streets\13495EN-AIIP\Prof&Corridor\_Setup.dwg



13494  
X-3

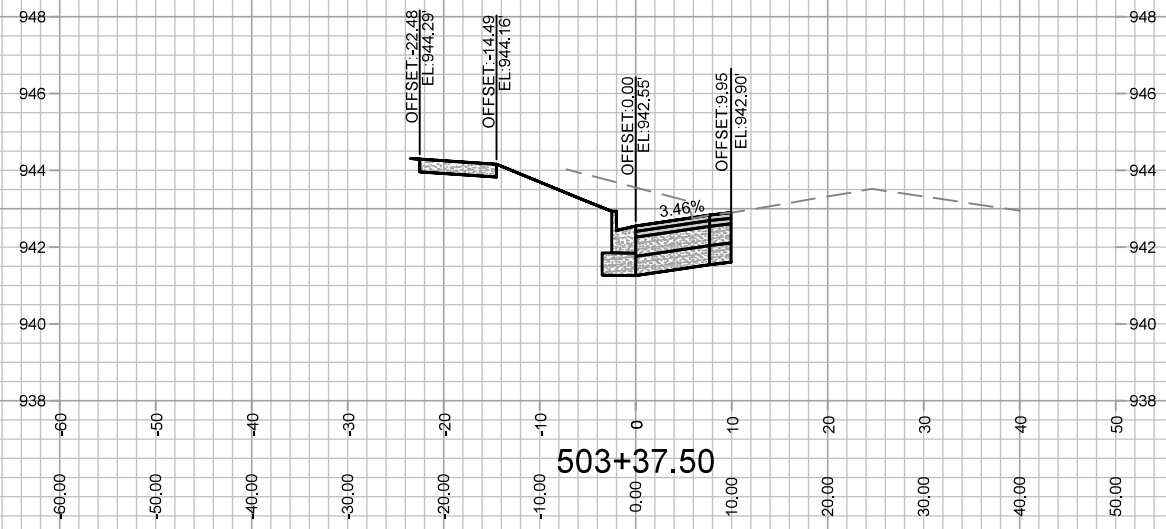
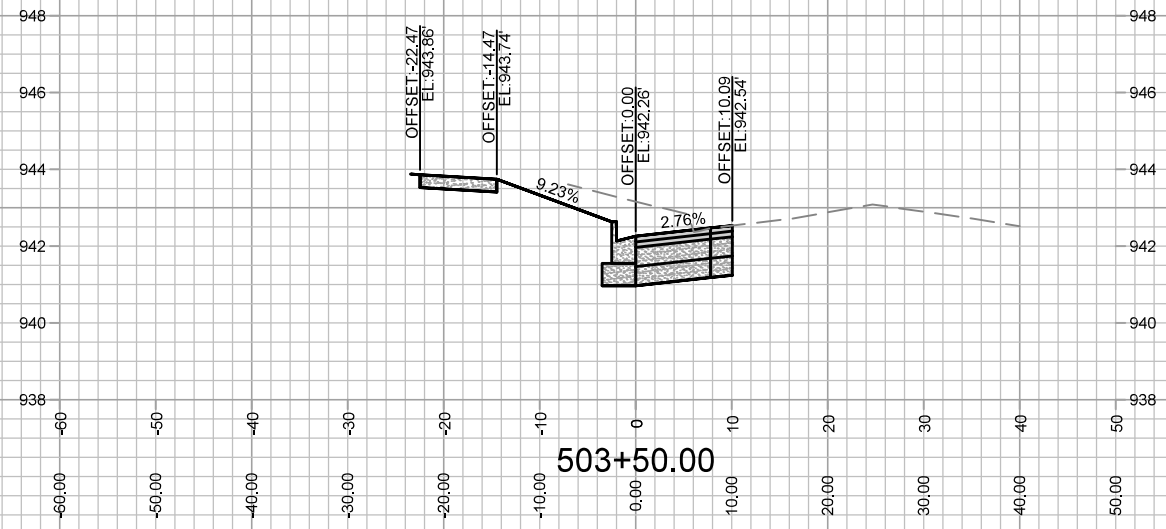
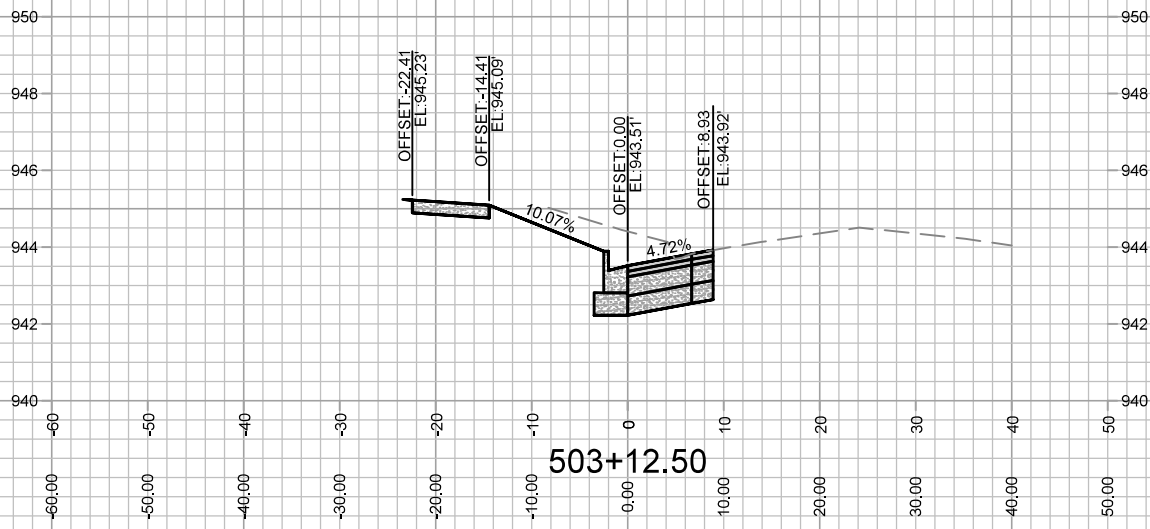
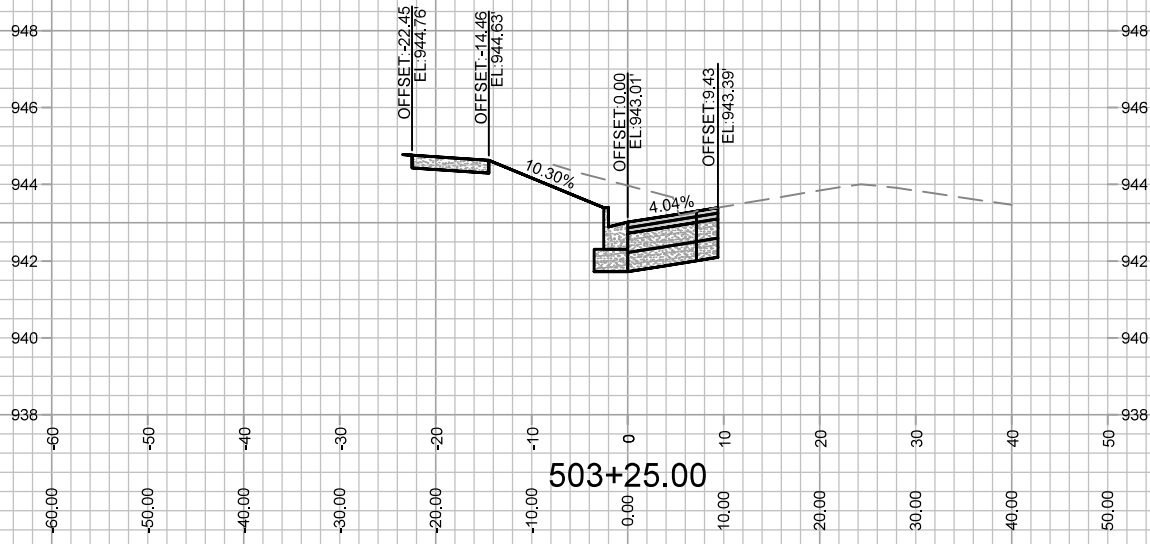


| MARK | REVISION | DATE | BY  |
|------|----------|------|-----|
| ---  | ---      | ---  | --- |
| ---  | ---      | ---  | --- |
| ---  | ---      | ---  | --- |

Designed By: LMC  
 13494  
 Date: 5/11/2022 11:58 AM  
 Scale: 1:20  
 X-4

13494  
 MADISON, WI  
 CONTRACT NO: 9049

CROSS SECTION - SHEBOYGAN AVE  
 MADISON YARDS AT HILL FARMS PHASE 3  
 M:\DESIGN\Projects\13495\CAD\Streets\13495EN-AIIProf&Corridor\_Setup.dwg



| MARK | REVISION | DATE | BY  |
|------|----------|------|-----|
| ---  | ---      | ---  | --- |
| ---  | ---      | ---  | --- |
| ---  | ---      | ---  | --- |

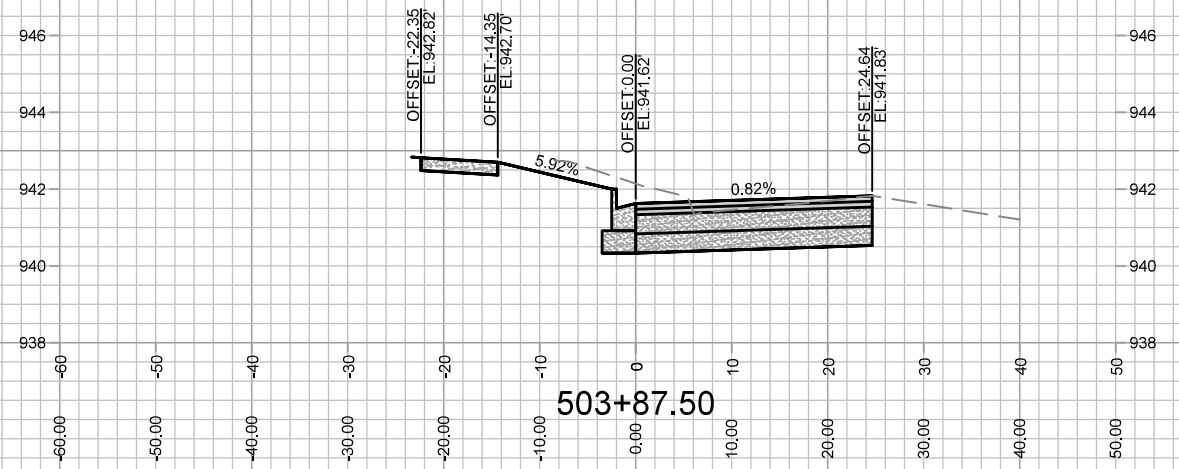
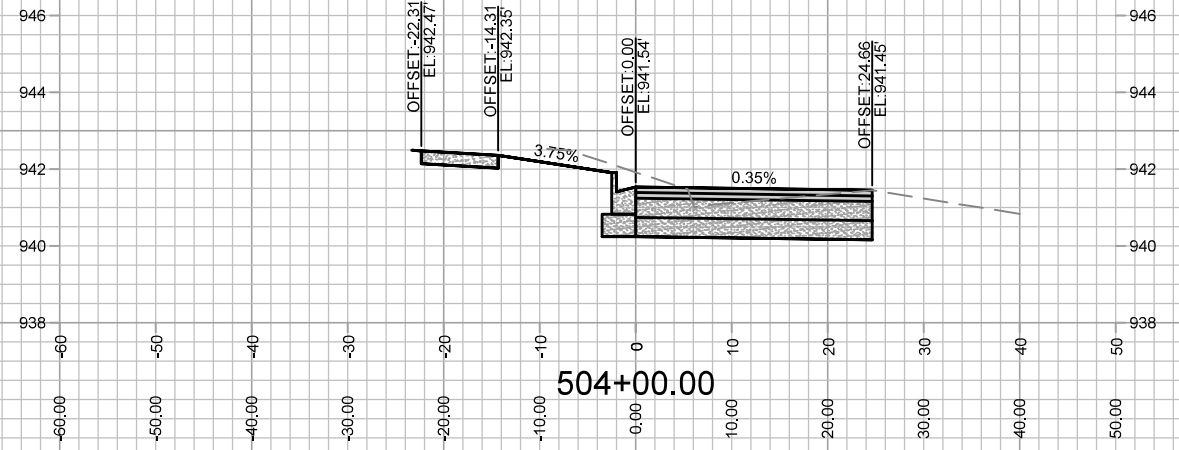
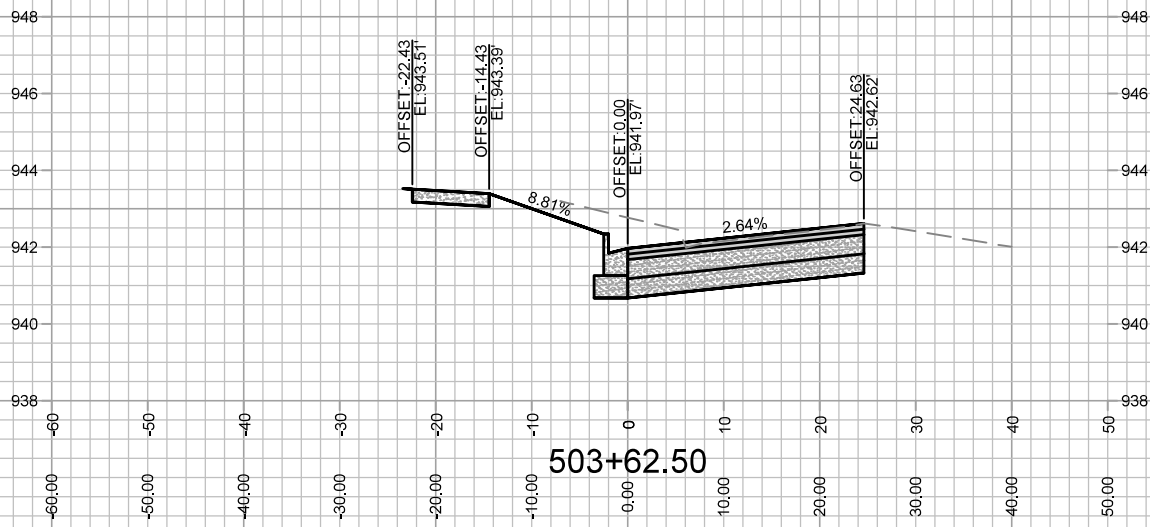
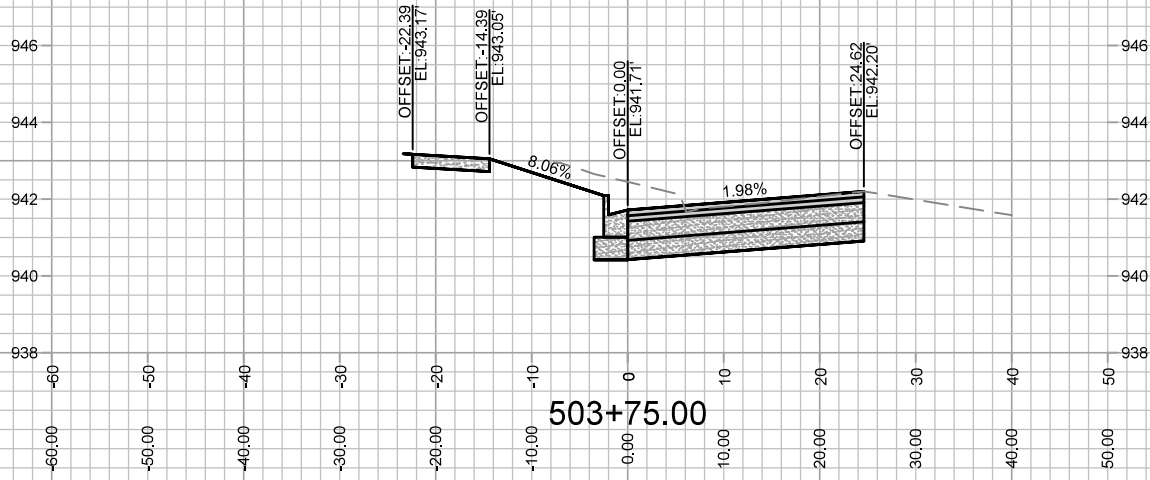
13494  
 MADISON, WI  
 CONTRACT NO: 9049

CROSS SECTION - SHEBOYGAN AVE  
 MADISON YARDS AT HILL FARMS PHASE 3  
 M:\DESIGN\Projects\13495\CAD\Streets\13495EN-AIP\Prof&Corridor\_Setup.dwg



13494  
 X-5

Designed By: LMC  
 13494  
 Date: 5/11/2022 11:55 AM  
 Scale: 1:20  
 X-5



| MARK | REVISION | DATE | BY  |
|------|----------|------|-----|
| ---  | ---      | ---  | --- |
| ---  | ---      | ---  | --- |
| ---  | ---      | ---  | --- |

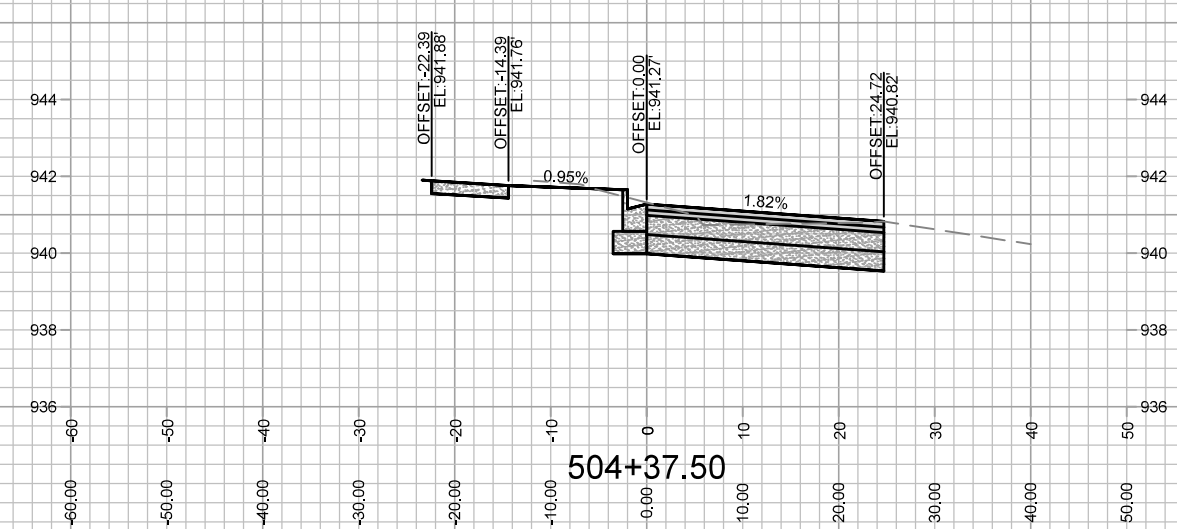
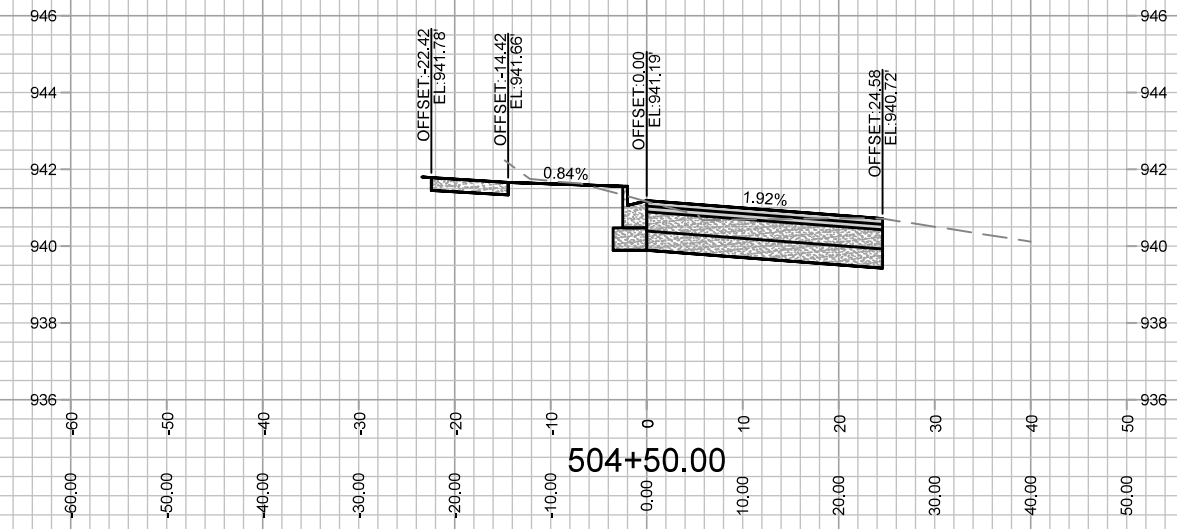
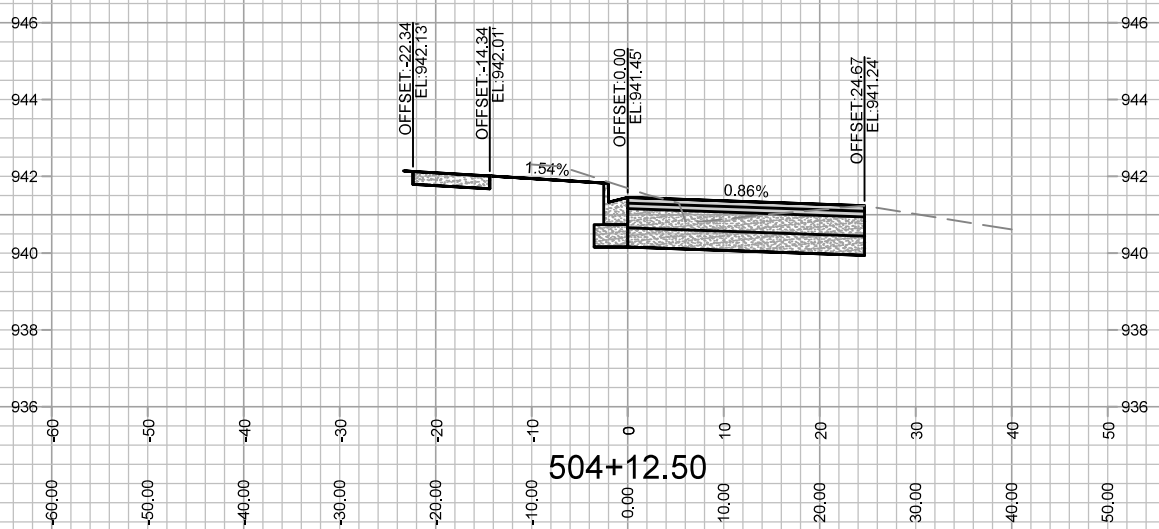
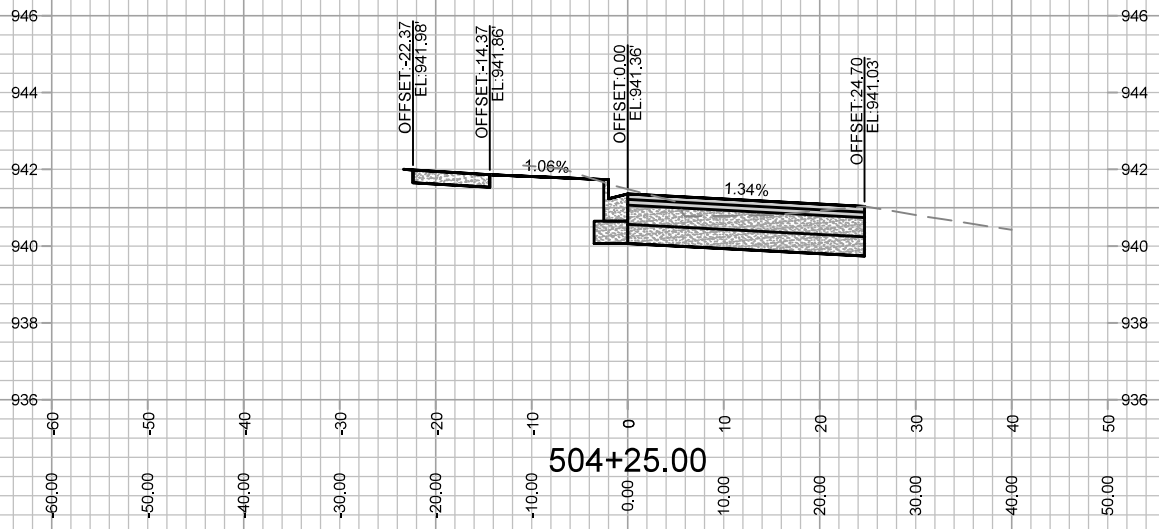
Designed By: LMC  
13494  
Date: 5/11/2022 11:59 AM  
Scale: 1:20  
X-6

13494  
MADISON, WI  
9049  
CONTRACT NO:

CROSS SECTION - SHEBOYGAN AVE  
MADISON YARDS AT HILL FARMS PHASE 3  
M:\DESIGN\Projects\13495\CAD\Streets\13495EN-AIP\Prof&Corridor\_Setup.dwg



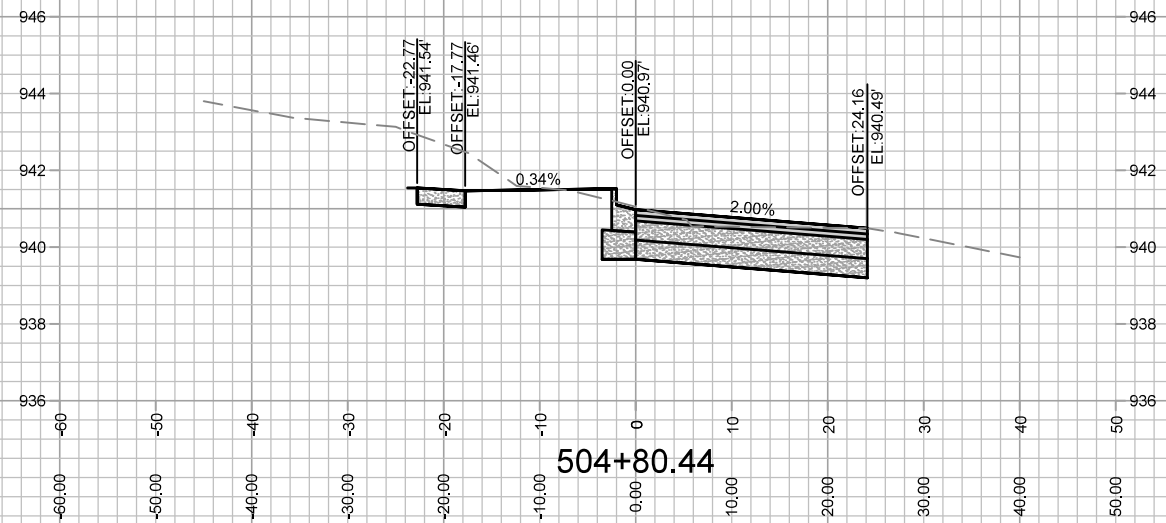
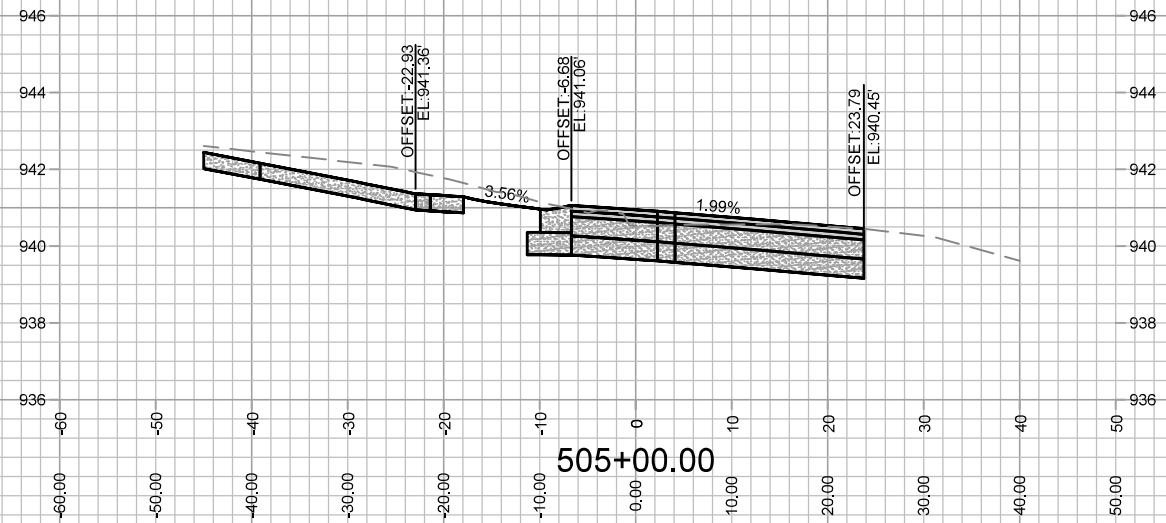
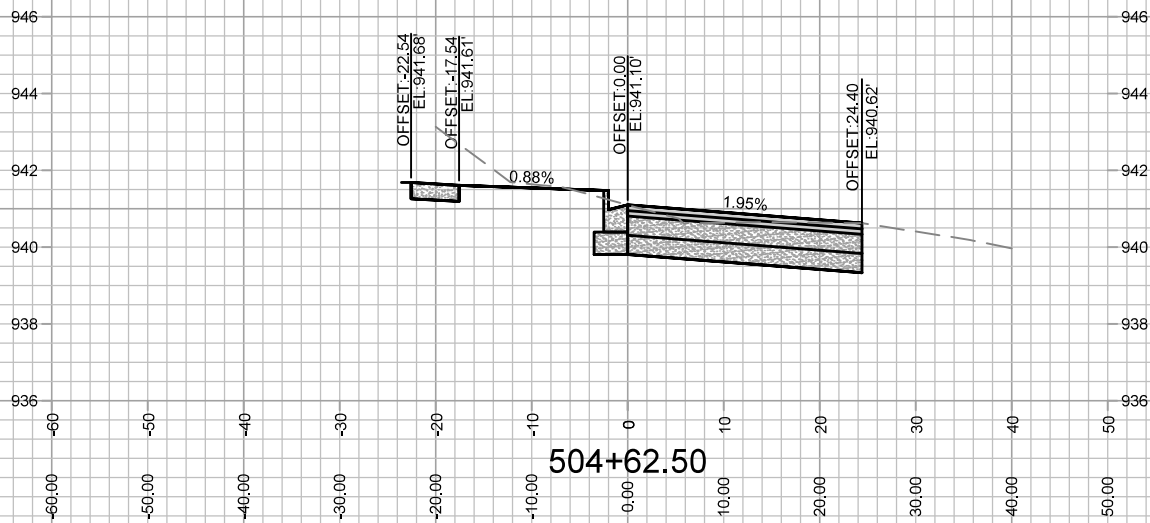
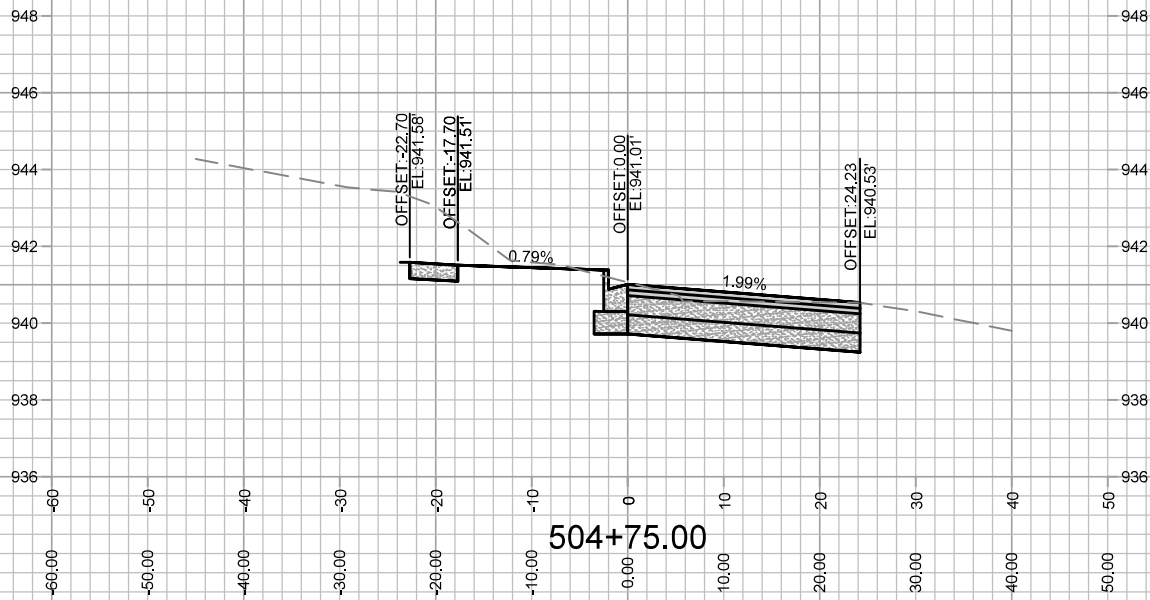
13494  
X-6



| MARK | REVISION | DATE | BY  |
|------|----------|------|-----|
| ---  | ---      | ---  | --- |
| ---  | ---      | ---  | --- |

Designed By: LMC  
 13494  
 Date: 5/11/2022 11:59 AM  
 Scale: 1:20  
 Z-7

13494  
 MADISON, WI  
 CONTRACT NO: 9049  
 CROSS SECTION - SHEBOYGAN AVE  
 MADISON YARDS AT HILL FARMS PHASE 3  
 M:\DESIGN\Projects\13495\CAD\Streets\13495EN-AI\Prof&Corridor\_Setup.dwg



| MARK | REVISION | DATE | BY  |
|------|----------|------|-----|
| ---  | ---      | ---  | --- |
| ---  | ---      | ---  | --- |
| ---  | ---      | ---  | --- |

13494  
 MADISON, WI  
 CONTRACT NO: 9049

CROSS SECTION - SHEBOYGAN AVE  
 MADISON YARDS AT HILL FARMS PHASE 3  
 M:\DESIGN\Projects\13495\CAD\Streets\13495EN-AIP\Prof&Corridor\_Setup.dwg



13494  
 X-8