



Madison, Wisconsin

CITY OF MADISON

CITY ENGINEERING DIVISION

DEPARTMENT OF PUBLIC WORKS

PLAN OF PROPOSED IMPROVEMENT

THE MADISONIAN-ABERG AVENUE:

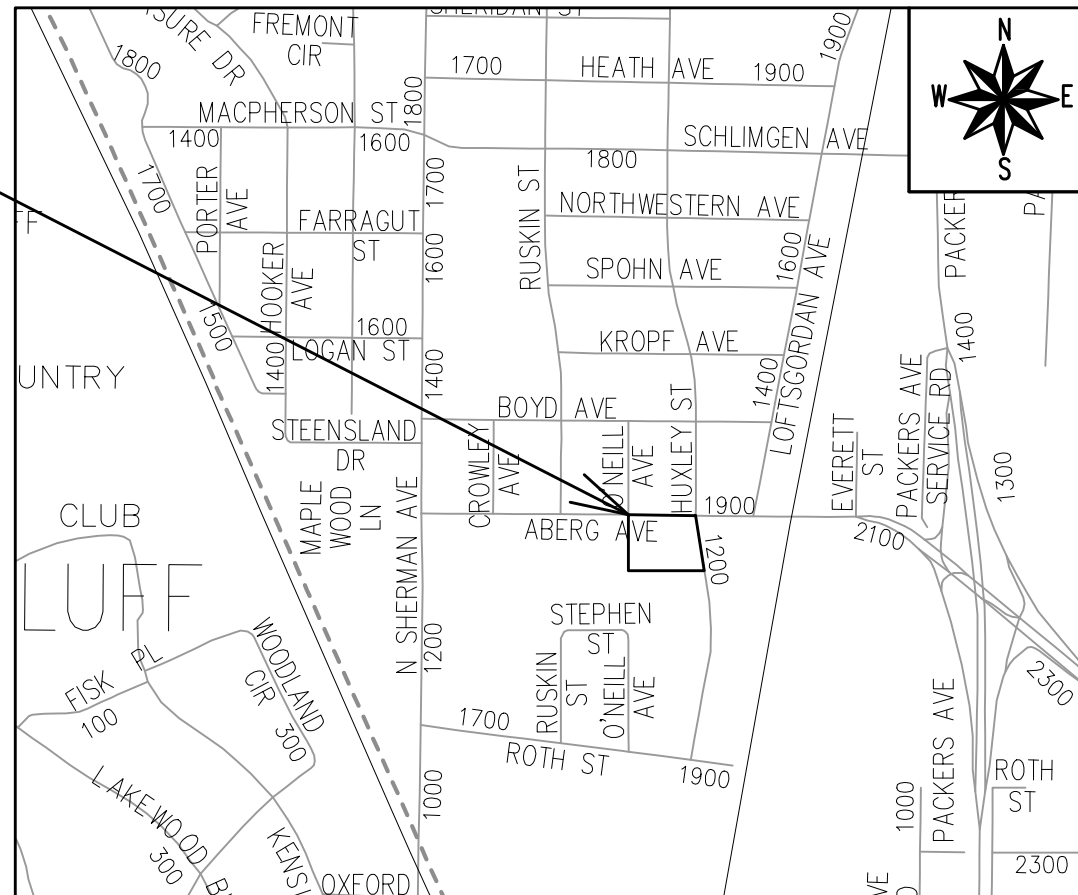
INDEX OF SHEETS

SHEET NO. D-1-D2	NOTES & DETAILS
SHEET NO. P1-P2	SIDEWALK PLAN & PROFILE
SHEET NO. U1	UTILITIES PLAN
NO MAINTENANCE PLAN	

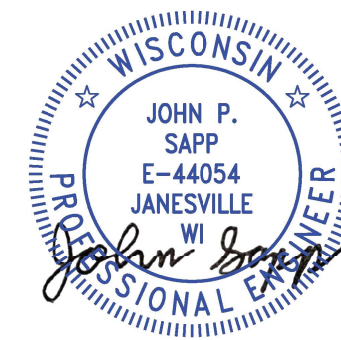
REV 07/02/21 BY LMC

CITY PROJECT NO. 13526
CONTRACT NO. 9038

PROJECT
LOCATION



STREET GRADES
DESIGNED BY:



Jul 15, 2021

PUBLIC IMPROVEMENT PROJECT
APPROVED

MAY 4, 2021

BY THE COMMON COUNCIL
OF MADISON, WISCONSIN

PUBLIC IMPROVEMENT DESIGN
APPROVED BY:

N. Greg Fries

Jul 15, 2021

City Engineer

Date

SANITARY SEWER
DESIGNED BY:

LATERALS
ONLY

STORM SEWER
DESIGNED BY:

LATERALS
ONLY

WATER
DESIGNED BY:

LATERALS
ONLY

PLOT SCALE: 1:1_XREF

PLOT NAME: ---

REV. DATE: 7/2/2021 10:26 AM


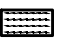

ORIGINATOR: CITY_OF_MADISON

ALL PROPOSED STREET TREE REMOVALS WITHIN THE RIGHT OF WAY SHALL BE REVIEWED BY CITY FORESTRY BEFORE THE PLAN COMMISSION MEETING. STREET TREE REMOVALS REQUIRE APPROVAL AND A TREE REMOVAL PERMIT ISSUED BY CITY FORESTRY. ANY STREET TREE REMOVALS REQUESTED AFTER THE DEVELOPMENT PLAN IS APPROVED BY THE PLAN COMMISSION OR THE BOARD OF PUBLIC WORKS AND CITY FORESTRY WILL REQUIRE A MINIMUM OF A 72-HOUR REVIEW PERIOD WHICH SHALL INCLUDE THE NOTIFICATION OF THE ALDERPERSON WITHIN WHO'S DISTRICT IS AFFECTED BY THE STREET TREE REMOVAL(S) PRIOR TO A TREE REMOVAL PERMIT BEING ISSUED.

AS DEFINED BY THE SECTION 107.13 OF CITY OF MADISON STANDARD SPECIFICATIONS FOR PUBLIC WORKS CONSTRUCTION: NO EXCAVATION IS PERMITTED WITHIN 5 FEET OF THE TRUNK OF THE STREET TREE OR WHEN CUTTING ROOTS OVER 3 INCHES IN DIAMETER. IF EXCAVATION IS NECESSARY, THE CONTRACTOR SHALL CONTACT MADISON CITY FORESTRY (266-4816) PRIOR TO EXCAVATION. CITY OF MADISON FORESTRY PERSONNEL SHALL ASSESS THE IMPACT TO THE TREE AND TO ITS ROOT SYSTEM PRIOR TO WORK COMMENCING. TREE PROTECTION SPECIFICATIONS CAN BE FOUND ON THE FOLLOWING WEBSITE: [HTTPS://WWW.CITYOFMADISON.COM/BUSINESS/PW/SPECS.CFM](https://www.cityofmadison.com/business/pw/specs.cfm)

DEVELOPER MUST SUBMIT A TRAFFIC CONTROL PLAN TO CITY TRAFFIC ENGINEERING AT LEAST 14 DAYS PRIOR TO THE START OF WORK. WORK SHALL NOT PROCEED UNTIL AN APPROVED TRAFFIC CONTROL PLAN IS IN PLACE.

CONTACT PROJECT ENGINEER AND STREET DESIGNER IKE OKAFOR AT IOKAFOR@CITYOFMADISON.COM FOR CAD AND ALIGNMENT DATA PRIOR TO STAKING.

CONVENTIONAL SIGNS	
FIELD VERIFY ALL UTILITY LOCATIONS	
GAS	—— G ——
STORM SEWER	—— ST ——
SANITARY SEWER	—— SN ——
WATER	—— W ——
BURIED ELECTRIC	—— E ——
OVERHEAD ELECTRIC	—— OH ——
POWER POLE	
ADA COMPLIANT RAMP W/ DETECTABLE WARNING FIELD	
COMBUSTIBLE FLUIDS	

UNDERDRAINS SHALL BE INSTALLED PER STANDARD DETAIL DRAWING 4.05 FOR 75' ON EACH SIDE OF THE LOW POINT, OR TO THE NEAREST CURB HIGH POINT. ALL UNDERDRAIN SHALL BE WRAPPED.

ALL GUTTERS SHALL DRAIN WITH A MINIMUM GRADE OF 0.5% TOWARD STORM SEWER INLETS.

ALL DITCHES SHALL DRAIN WITH A MINIMUM GRADE OF 0.5%

THE CROSS SLOPE OF SIDEWALKS AND BARRIER FREE SIDEWALK CURB RAMPS SHALL TYPICALLY BE 1.5%. THE LONGITUDINAL GRADE OF BARRIER FREE SIDEWALK CURB RAMPS SHALL NOT EXCEED 8.33%. ALL SIDEWALK RAMPS SHALL BE CONSTRUCTED ACCORDING TO S.D.D. 3.04. AT ALL OTHER LOCATIONS THE LONGITUDINAL GRADE OF SIDEWALKS SHALL NOT BE LESS THAN 0.5% AND SHALL DRAIN TOWARD STORM SEWER INLETS. ALL SIDEWALK AND SIDEWALK RAMP ELEVATIONS AND GRADES SHALL BE FIELD VERIFIED AND SET TO COMPLY WITH THE CITY OF MADISON STANDARD SPECIFICATIONS AND THE A.D.A. GUIDELINES.

CURB STATION AND OFFSETS SHALL BE TO THE EDGE OF PAVEMENT UNLESS OTHERWISE INDICATED. CURB ELEVATIONS SHALL BE TO THE EDGE OF PAVEMENT UNLESS OTHERWISE INDICATED.

POWER POLES AND OTHER OBSTRUCTIONS SHALL BE MOVED TO PROVIDE 2 FEET MINIMUM OF CLEAR DISTANCE FROM ANY FACE OF CURB OR EDGE OF SIDEWALK.

ANY INFORMATION SHOWN ON THIS PLAN, WHICH IS NOT PART OF THIS RIGHT-OF-WAY PROJECT, IS PRELIMINARY AND NOT FOR CONSTRUCTION.

THERE MAY BE EXISTING UTILITIES OR OTHER FEATURES WHICH ARE EITHER NOT SHOWN OR SHOWN INCORRECTLY ON THIS PLAN. IT IS THE RESPONSIBILITY OF THE DEVELOPER TO LOCATE AND IDENTIFY ALL UTILITIES AND TOPOGRAPHY WHICH MAY AFFECT THE CONSTRUCTION OF THESE IMPROVEMENTS.

ALL PERMANENT SIGNING AND POSTING WILL BE DETERMINED AND PROVIDED BY THE TRAFFIC ENGINEERING DIVISION, FOLLOWING CONSTRUCTION OF THESE IMPROVEMENTS.

THE DEVELOPER SHALL PROVIDE, INSTALL AND MAINTAIN ALL STREET END BARRICADES, SIGNING AND TRAFFIC CONTROL, AS REQUIRED BY THE CITY TRAFFIC ENGINEER.

PAVEMENT SAWCUTS SHALL BE AS DIRECTED BY THE CITY CONSTRUCTION ENGINEER. SAWCUTS SHOWN ON THE PLAN ARE APPROXIMATE.

ALL WORK IN THE RIGHT OF WAY AND PUBLIC EASEMENTS SHALL BE IN ACCORDANCE WITH THE CITY OF MADISON STANDARD SPECIFICATIONS FOR PUBLIC WORKS CONSTRUCTION



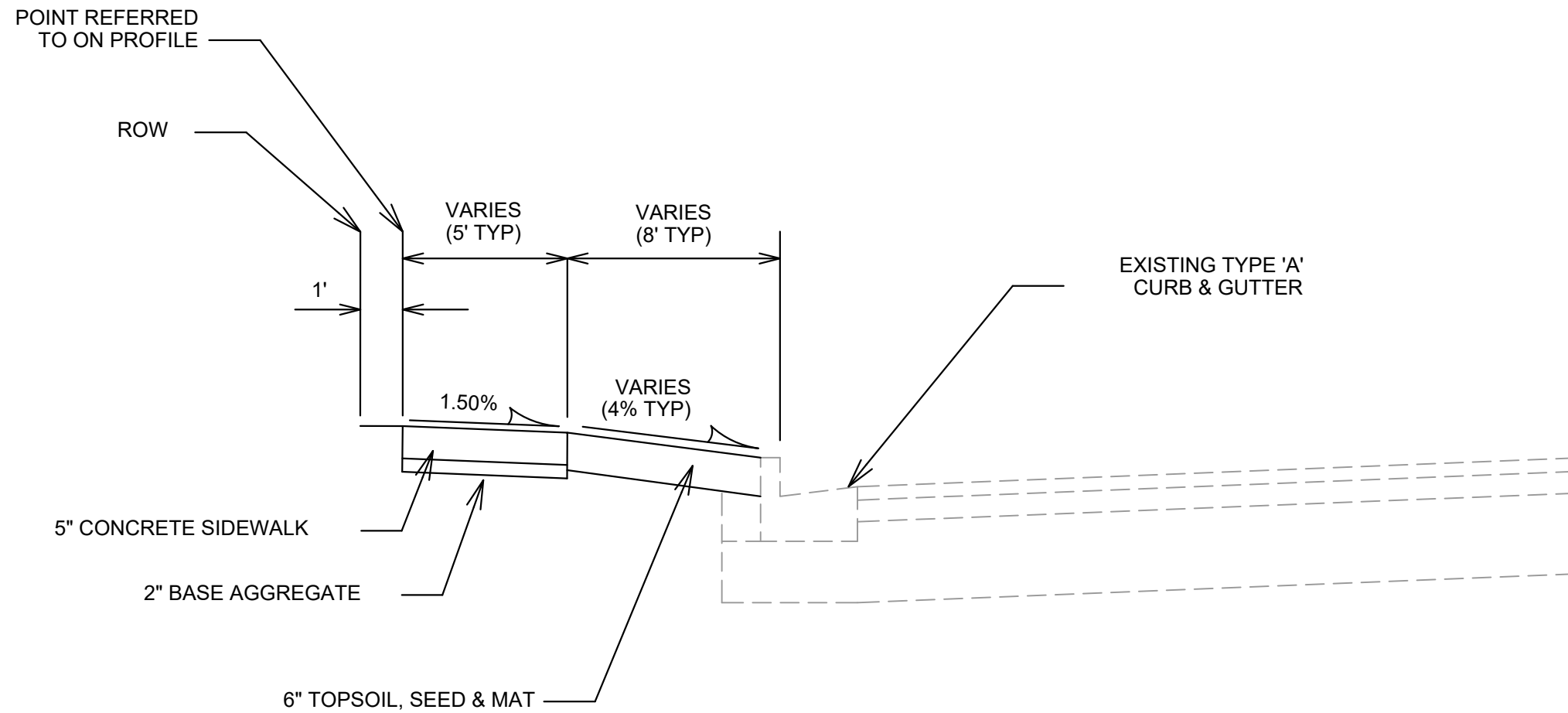
MARK	REVISION	DATE	BY

13526
MADISON, WI
9038
CONTRACT NO:

STANDARD NOTES
THE MADISONIAN-ABERG AVENUE
M:\DESIGN\Projects\13526\CAD\Streets\13526EN-Details.dwg



13526
D-1



TYPICAL SECTION

HUXLEY STREET
 STA 11+08 TO STA 12+98
 ABERG AVENUE
 STA 23+24 TO STA 23+41
 NOT TO SCALE

NOTES:

- ** SEE PLAN AND PROFILE FOR SLOPES, ELEVATIONS AND OFFSETS
- *** STATION OFFSET ELEVATION CALLOUTS AT **BACK OF WALK**.

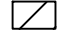

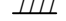


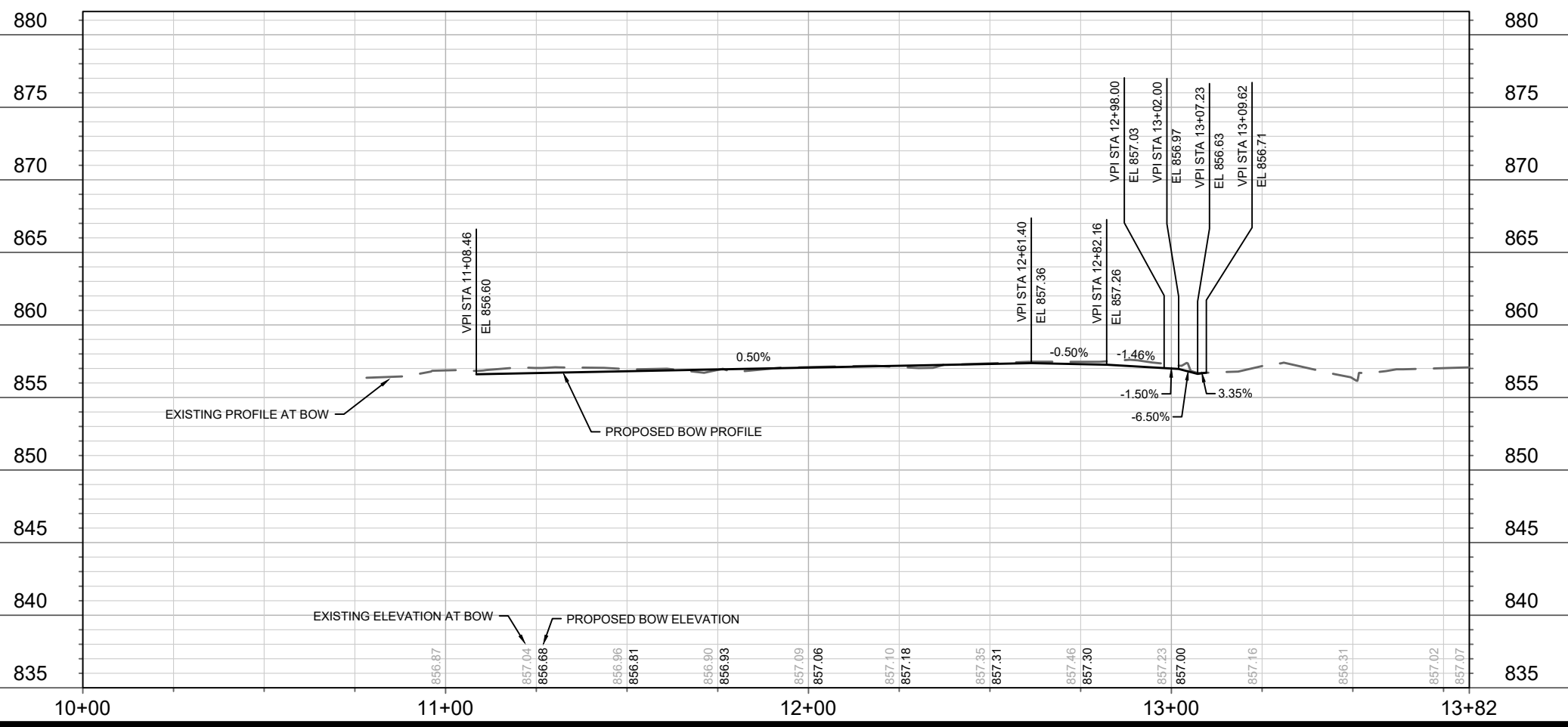
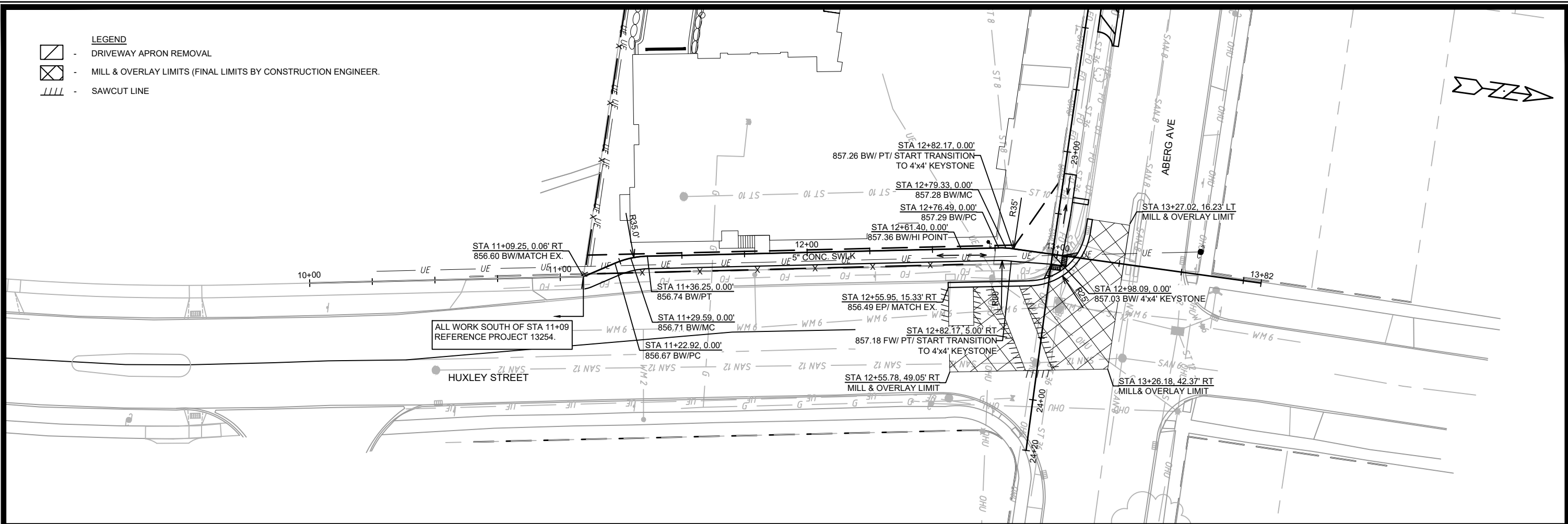
MARK	REVISION	DATE	BY
13526		7/14/2021 10:55 AM	
Designed By: ID	Scale: #####		

13526
 MADISON, WI
 CONTRACT NO: 9038

STANDARD DETAILS
 THE MADISONIAN-ABERG AVENUE
 M:\DESIGN\Projects\13526\CAD\Streets\13526EN-Details.dwg



- LEGEND**
-  - DRIVEWAY APRON REMOVAL
 -  - MILL & OVERLAY LIMITS (FINAL LIMITS BY CONSTRUCTION ENGINEER)
 -  - SAWCUT LINE

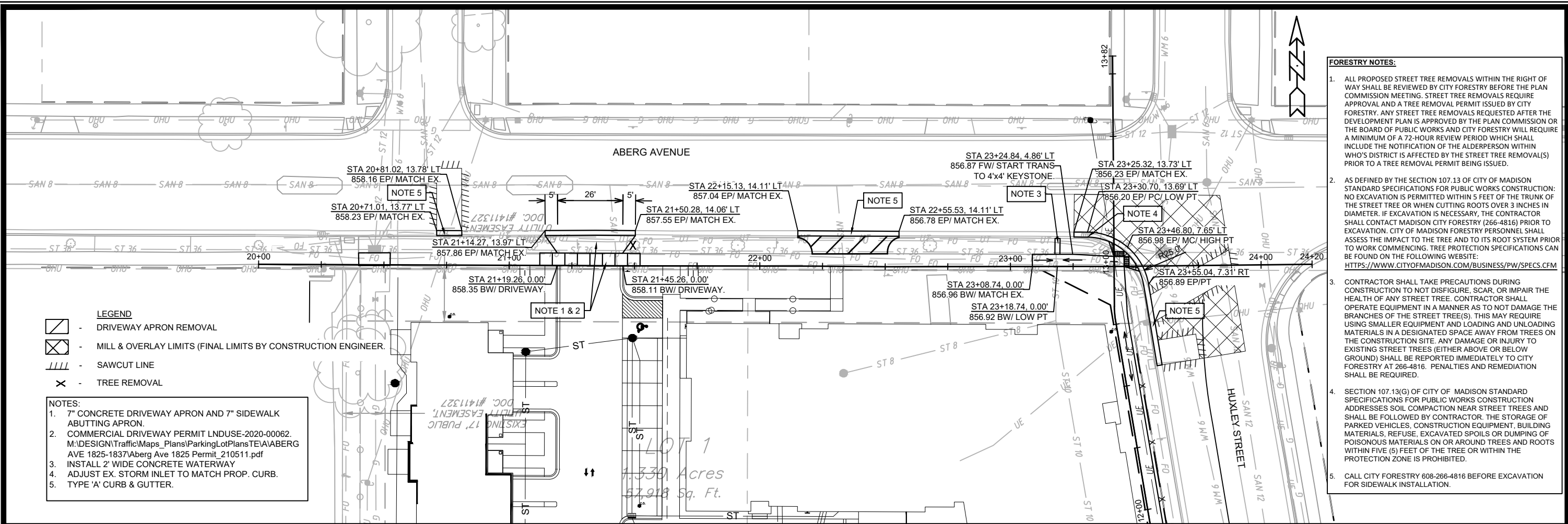


DATE	BY
REVISION	
MARK	
Designed By: ID	Date: 7/14/2021 10:35 AM
13526	

13526
MADISON, WI
CONTRACT NO: 9038

HUXLEY SIDEWALK PLAN & PROFILE
THE MADISONIAN-ABERG AVENUE
M:\DESIGN\Projects\13526\CAD\Streets\13526EN-PrP.dwg

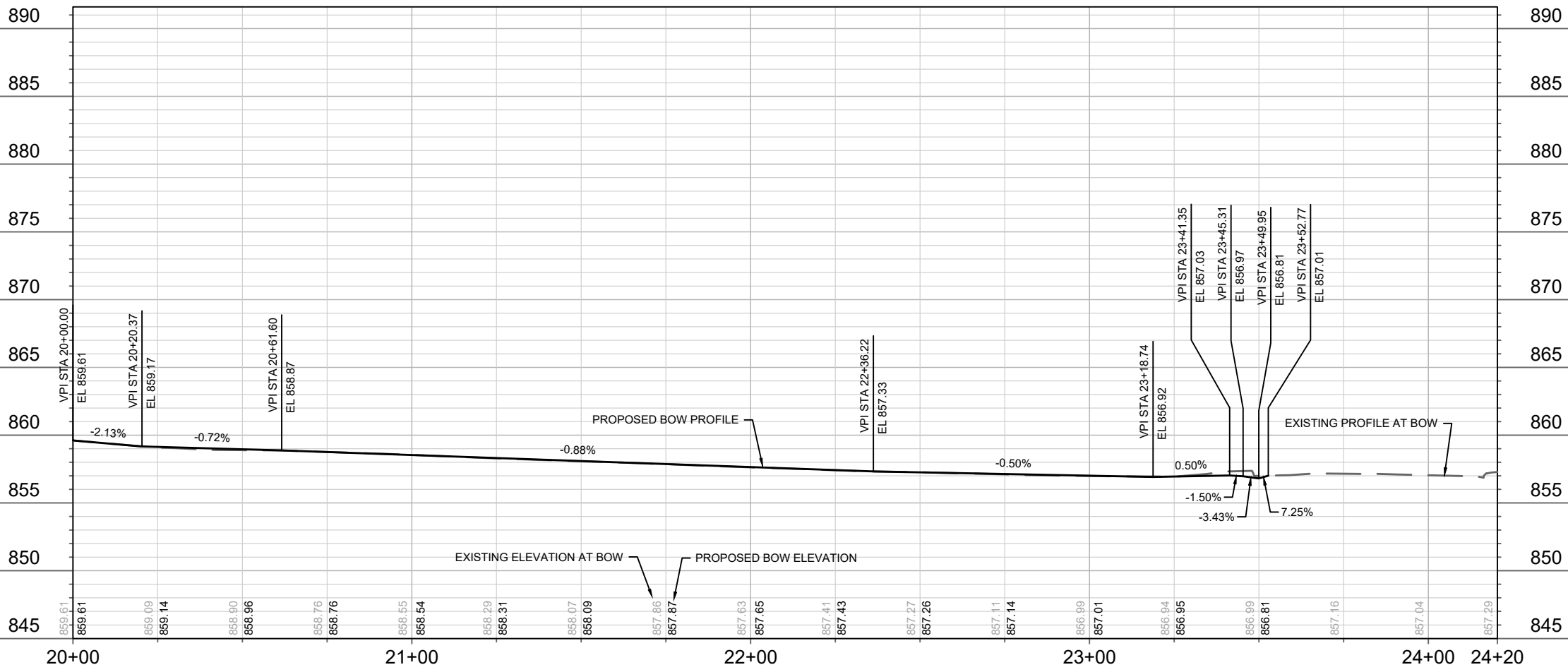




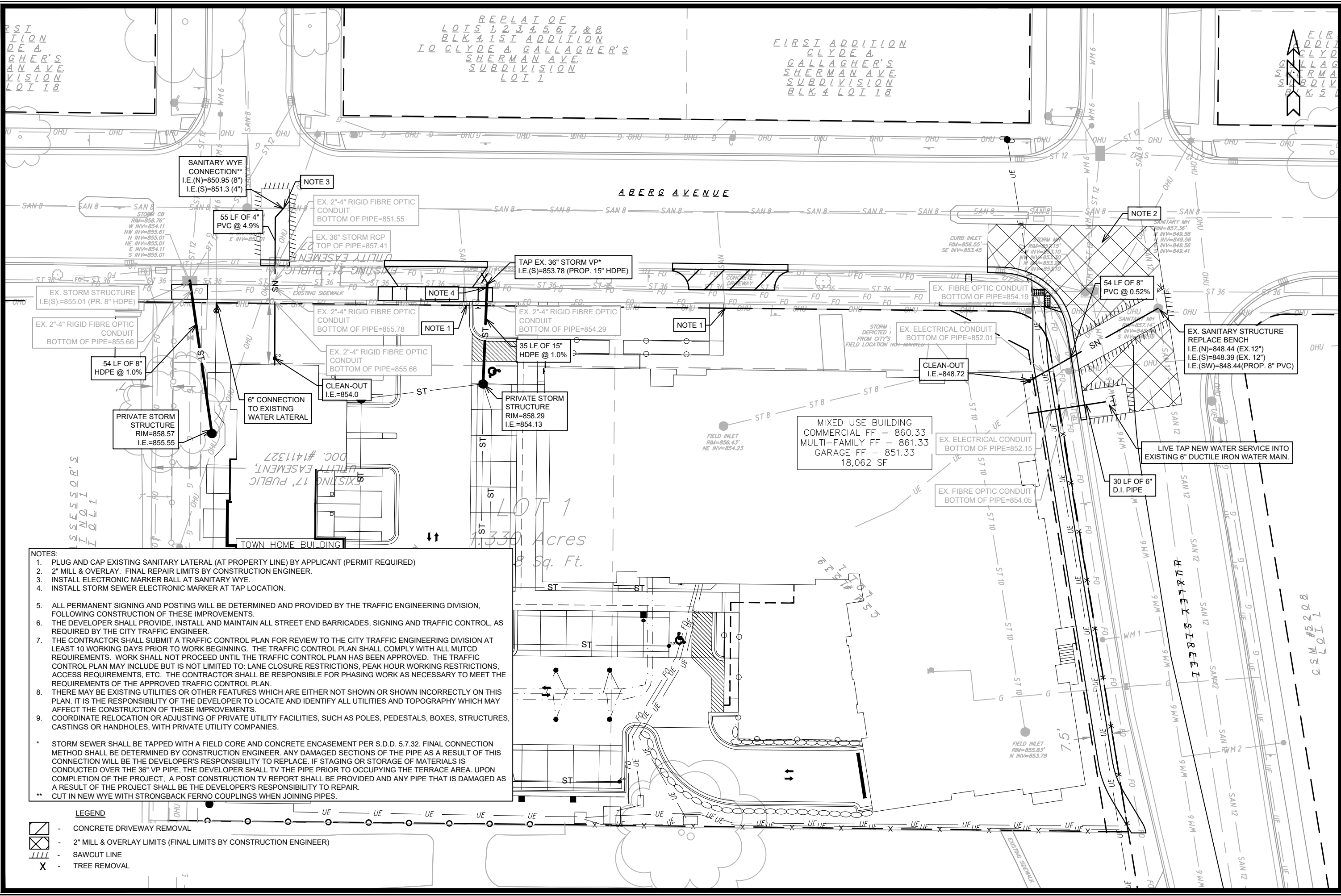
- LEGEND**
- DRIVEWAY APRON REMOVAL
 - MILL & OVERLAY LIMITS (FINAL LIMITS BY CONSTRUCTION ENGINEER)
 - SAWCUT LINE
 - TREE REMOVAL

- NOTES:**
1. 7" CONCRETE DRIVEWAY APRON AND 7" SIDEWALK ABUTTING APRON.
 2. COMMERCIAL DRIVEWAY PERMIT LNDUSE-2020-00062. M:\DESIGN\Traffic\Maps_Plans\Parking\LotPlans\TEVA\BERG AVE 1825-1837\Aberg Ave 1825 Permit_210511.pdf
 3. INSTALL 2' WIDE CONCRETE WATERWAY
 4. ADJUST EX. STORM INLET TO MATCH PROP. CURB.
 5. TYPE 'A' CURB & GUTTER.

- FORESTRY NOTES:**
1. ALL PROPOSED STREET TREE REMOVALS WITHIN THE RIGHT OF WAY SHALL BE REVIEWED BY CITY FORESTRY BEFORE THE PLAN COMMISSION MEETING. STREET TREE REMOVALS REQUIRE APPROVAL AND A TREE REMOVAL PERMIT ISSUED BY CITY FORESTRY. ANY STREET TREE REMOVALS REQUESTED AFTER THE DEVELOPMENT PLAN IS APPROVED BY THE PLAN COMMISSION OR THE BOARD OF PUBLIC WORKS AND CITY FORESTRY WILL REQUIRE A MINIMUM OF A 72-HOUR REVIEW PERIOD WHICH SHALL INCLUDE THE NOTIFICATION OF THE ALDERPERSON WITHIN WHO'S DISTRICT IS AFFECTED BY THE STREET TREE REMOVAL(S) PRIOR TO A TREE REMOVAL PERMIT BEING ISSUED.
 2. AS DEFINED BY THE SECTION 107.13 OF CITY OF MADISON STANDARD SPECIFICATIONS FOR PUBLIC WORKS CONSTRUCTION: NO EXCAVATION IS PERMITTED WITHIN 5 FEET OF THE TRUNK OF THE STREET TREE OR WHEN CUTTING ROOTS OVER 3 INCHES IN DIAMETER. IF EXCAVATION IS NECESSARY, THE CONTRACTOR SHALL CONTACT MADISON CITY FORESTRY (266-4816) PRIOR TO EXCAVATION. CITY OF MADISON FORESTRY PERSONNEL SHALL ASSESS THE IMPACT TO THE TREE AND TO ITS ROOT SYSTEM PRIOR TO WORK COMMENCING. TREE PROTECTION SPECIFICATIONS CAN BE FOUND ON THE FOLLOWING WEBSITE: [HTTPS://WWW.CITYOFMADISON.COM/BUSINESS/PW/SPECS.CFM](https://www.cityofmadison.com/Business/PW/SPECS.CFM)
 3. CONTRACTOR SHALL TAKE PRECAUTIONS DURING CONSTRUCTION TO NOT DISFIGURE, SCAR, OR IMPAIR THE HEALTH OF ANY STREET TREE. CONTRACTOR SHALL OPERATE EQUIPMENT IN A MANNER AS TO NOT DAMAGE THE BRANCHES OF THE STREET TREE(S). THIS MAY REQUIRE USING SMALLER EQUIPMENT AND LOADING AND UNLOADING MATERIALS IN A DESIGNATED SPACE AWAY FROM TREES ON THE CONSTRUCTION SITE. ANY DAMAGE OR INJURY TO EXISTING STREET TREES (EITHER ABOVE OR BELOW GROUND) SHALL BE REPORTED IMMEDIATELY TO CITY FORESTRY AT 266-4816. PENALTIES AND REMEDIATION SHALL BE REQUIRED.
 4. SECTION 107.13(G) OF CITY OF MADISON STANDARD SPECIFICATIONS FOR PUBLIC WORKS CONSTRUCTION ADDRESSES SOIL COMPACTION NEAR STREET TREES AND SHALL BE FOLLOWED BY CONTRACTOR. THE STORAGE OF PARKED VEHICLES, CONSTRUCTION EQUIPMENT, BUILDING MATERIALS, REFUSE, EXCAVATED SPOILS OR DUMPING OF POISONOUS MATERIALS ON OR AROUND TREES AND ROOTS WITHIN FIVE (5) FEET OF THE TREE OR WITHIN THE PROTECTION ZONE IS PROHIBITED.
 5. CALL CITY FORESTRY 608-266-4816 BEFORE EXCAVATION FOR SIDEWALK INSTALLATION.



<p>13526</p> <p>MADISON, WI</p> <p>CONTRACT NO: 9038</p>	<p>13526</p> <p>ABERG SIDEWALK - PLAN & PROFILE</p> <p>THE MADISONIAN-ABERG AVENUE</p> <p>M:\DESIGN\Projects\13526\CAD\Streets\13526EN-PnP.dwg</p>
<p>13526</p> <p>P-2</p>	<p>13526</p> <p>P-2</p>



NOTES:

1. PLUG AND CAP EXISTING SANITARY LATERAL (AT PROPERTY LINE) BY APPLICANT (PERMIT REQUIRED)
2. 2" MILL & OVERLAY. FINAL REPAIR LIMITS BY CONSTRUCTION ENGINEER.
3. INSTALL ELECTRONIC MARKER BALL AT SANITARY WYE.
4. INSTALL STORM SEWER ELECTRONIC MARKER AT TAP LOCATION.
5. ALL PERMANENT SIGNING AND POSTING WILL BE DETERMINED AND PROVIDED BY THE TRAFFIC ENGINEERING DIVISION, FOLLOWING CONSTRUCTION OF THESE IMPROVEMENTS.
6. THE DEVELOPER SHALL PROVIDE, INSTALL AND MAINTAIN ALL STREET END BARRICADES, SIGNING AND TRAFFIC CONTROL, AS REQUIRED BY THE CITY TRAFFIC ENGINEER.
7. THE CONTRACTOR SHALL SUBMIT A TRAFFIC CONTROL PLAN FOR REVIEW TO THE CITY TRAFFIC ENGINEERING DIVISION AT LEAST 10 WORKING DAYS PRIOR TO WORK BEGINNING. THE TRAFFIC CONTROL PLAN SHALL COMPLY WITH ALL MUTCD REQUIREMENTS. WORK SHALL NOT PROCEED UNTIL THE TRAFFIC CONTROL PLAN HAS BEEN APPROVED. THE TRAFFIC CONTROL PLAN MAY INCLUDE BUT IS NOT LIMITED TO: LANE CLOSURE RESTRICTIONS, PEAK HOUR WORKING RESTRICTIONS, ACCESS REQUIREMENTS, ETC. THE CONTRACTOR SHALL BE RESPONSIBLE FOR PHASING WORK AS NECESSARY TO MEET THE REQUIREMENTS OF THE APPROVED TRAFFIC CONTROL PLAN.
8. THERE MAY BE EXISTING UTILITIES OR OTHER FEATURES WHICH ARE EITHER NOT SHOWN OR SHOWN INCORRECTLY ON THIS PLAN. IT IS THE RESPONSIBILITY OF THE DEVELOPER TO LOCATE AND IDENTIFY ALL UTILITIES AND TOPOGRAPHY WHICH MAY AFFECT THE CONSTRUCTION OF THESE IMPROVEMENTS.
9. COORDINATE RELOCATION OR ADJUSTING OF PRIVATE UTILITY FACILITIES, SUCH AS POLES, PEDESTALS, BOXES, STRUCTURES, CASTINGS OR HANDHOLES, WITH PRIVATE UTILITY COMPANIES.

* STORM SEWER SHALL BE TAPPED WITH A FIELD CORE AND CONCRETE ENCASEMENT PER S.D.D. 5.7.32. FINAL CONNECTION METHOD SHALL BE DETERMINED BY CONSTRUCTION ENGINEER. ANY DAMAGED SECTIONS OF THE PIPE AS A RESULT OF THIS CONNECTION WILL BE THE DEVELOPER'S RESPONSIBILITY TO REPLACE. IF STAGING OR STORAGE OF MATERIALS IS CONDUCTED OVER THE 36" VP PIPE, THE DEVELOPER SHALL TV THE PIPE PRIOR TO OCCUPYING THE TAP AREA. UPON COMPLETION OF THE PROJECT, A POST CONSTRUCTION TV REPORT SHALL BE PROVIDED AND ANY PIPE THAT IS DAMAGED AS A RESULT OF THE PROJECT SHALL BE THE DEVELOPER'S RESPONSIBILITY TO REPAIR.

** CUT IN NEW WYE WITH STRONGBACK FERRO COUPLINGS WHEN JOINING PIPES.

LEGEND

- CONCRETE DRIVEWAY REMOVAL
- 2" MILL & OVERLAY LIMITS (FINAL LIMITS BY CONSTRUCTION ENGINEER)
- SAWCUT LINE
- TREE REMOVAL

13526	MADISON, WI	9038	U-1
THE MADISONIAN-ABERG AVENUE		CONTRACT NO.:	
M:\DESIGN\Projects\13526\CAD\Streets\13526EN-Utilities.dwg			
13526		U-1	