

Madison, Wisconsin

# CITY OF MADISON

## CITY ENGINEERING DIVISION

### DEPARTMENT OF PUBLIC WORKS

# PLAN OF PROPOSED IMPROVEMENT

#### INDEX OF SHEETS

SHEET NO.	D1	GENERAL NOTES & COMMENTS
SHEET NO.	D2	TYPICAL SECTIONS
SHEET NO.	P1-P2	SIDEWALK PLAN & PROFILES
SHEET NO.	U1	STORM SEWER PLAN & PROFILE W/ SCHEDULE
SHEET NO.	U2	UTILITY PLAN - SANITARY SEWER & WATER

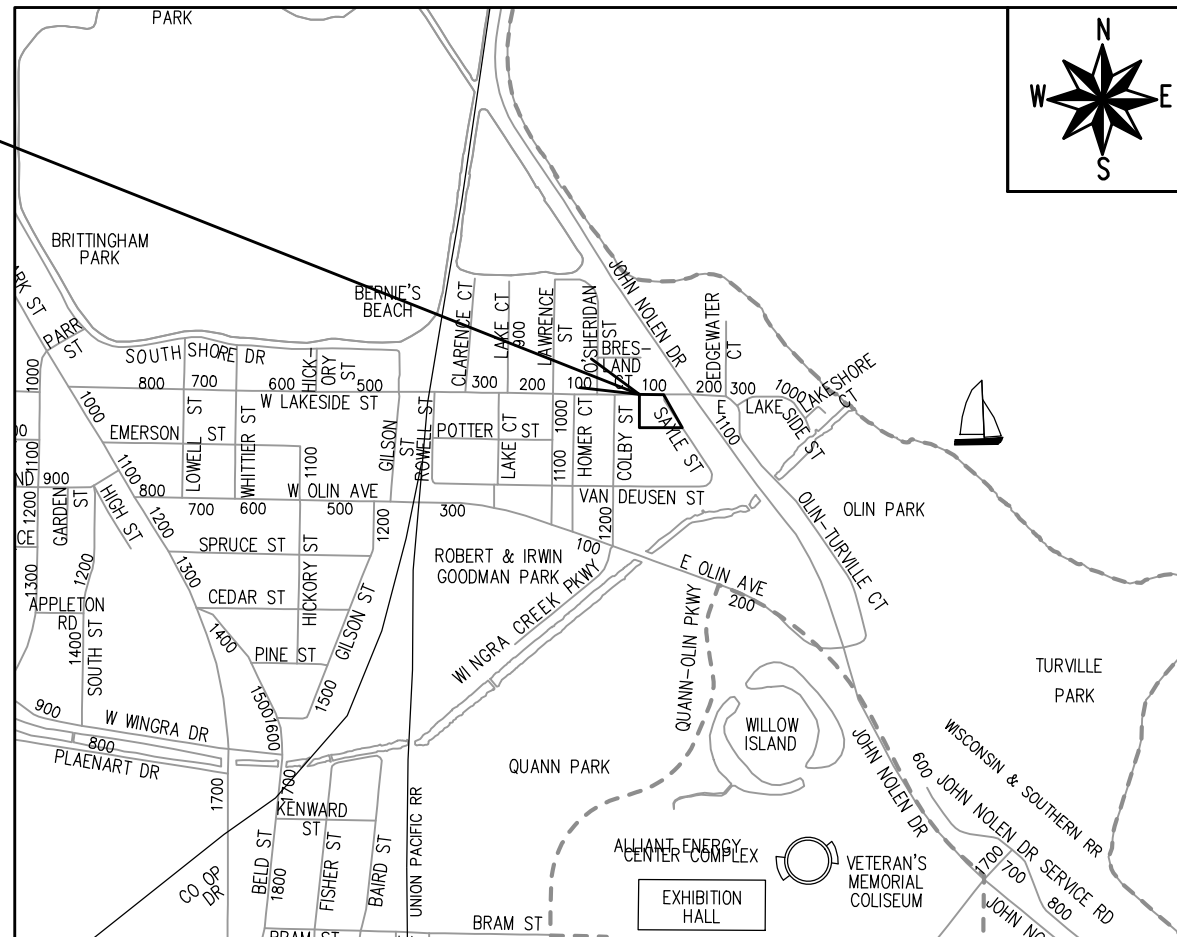
NO MAINTENANCE PLAN REQUIRED

REVISED 6/22/22 BY IO

## 133 E LAKESIDE STREET

CITY PROJECT NO. 13555  
CONTRACT NO. 9043

### PROJECT LOCATION



PUBLIC IMPROVEMENT PROJECT APPROVED

JANUARY 4, 2022

BY THE COMMON COUNCIL OF MADISON, WISCONSIN

PUBLIC IMPROVEMENT DESIGN APPROVED BY:

*Greg Fries*

Apr 4, 2022

City Engineer

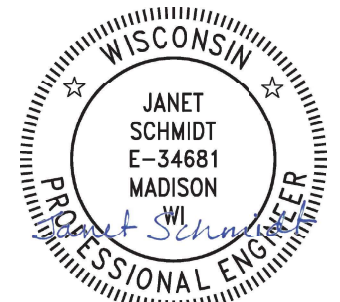
Date

STREET DESIGNED BY:



Apr 4, 2022

STORM SEWER DESIGNED BY:



Apr 4, 2022

WATER DESIGNED BY:

LATERAL ONLY

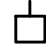


SANITARY SEWER DESIGNED BY:

LATERAL ONLY

ALL PROPOSED STREET TREE REMOVALS WITHIN THE RIGHT OF WAY SHALL BE REVIEWED BY CITY FORESTRY BEFORE THE PLAN COMMISSION MEETING. STREET TREE REMOVALS REQUIRE APPROVAL AND A TREE REMOVAL PERMIT ISSUED BY CITY FORESTRY. ANY STREET TREE REMOVALS REQUESTED AFTER THE DEVELOPMENT PLAN IS APPROVED BY THE PLAN COMMISSION OR THE BOARD OF PUBLIC WORKS AND CITY FORESTRY WILL REQUIRE A MINIMUM OF A 72-HOUR REVIEW PERIOD WHICH SHALL INCLUDE THE NOTIFICATION OF THE ALDERPERSON WITHIN WHO'S DISTRICT IS AFFECTED BY THE STREET TREE REMOVAL(S) PRIOR TO A TREE REMOVAL PERMIT BEING ISSUED.

AS DEFINED BY THE SECTION 107.13 OF CITY OF MADISON STANDARD SPECIFICATIONS FOR PUBLIC WORKS CONSTRUCTION: NO EXCAVATION IS PERMITTED WITHIN 5 FEET OF THE TRUNK OF THE STREET TREE OR WHEN CUTTING ROOTS OVER 3 INCHES IN DIAMETER. IF EXCAVATION IS NECESSARY, THE CONTRACTOR SHALL CONTACT MADISON CITY FORESTRY (266-4816) PRIOR TO EXCAVATION. CITY OF MADISON FORESTRY PERSONNEL SHALL ASSESS THE IMPACT TO THE TREE AND TO ITS ROOT SYSTEM PRIOR TO WORK COMMENCING. TREE PROTECTION SPECIFICATIONS CAN BE FOUND ON THE FOLLOWING WEBSITE:  
[HTTPS://WWW.CITYOFMADISON.COM/BUSINESS/PW/SPECS.CFM](https://www.cityofmadison.com/business/pw/specs.cfm)

DEVELOPER MUST SUBMIT A TRAFFIC CONTROL PLAN TO CITY TRAFFIC ENGINEERING AT LEAST 14 DAYS PRIOR TO THE START OF WORK. WORK SHALL NOT PROCEED UNTIL AN APPROVED TRAFFIC CONTROL PLAN IS IN PLACE. CONTACT PROJECT ENGINEER AND STREET DESIGNER IKE OKAFOR AT IOKAFOR@CITYOFMADISON.COM FOR CAD AND ALIGNMENT DATA PRIOR TO STAKING.

CONVENTIONAL SIGNS	
FIELD VERIFY ALL UTILITY LOCATIONS	
GAS	—— G ——
STORM SEWER	—— ST ——
SANITARY SEWER	—— SN ——
WATER	—— W ——
BURIED ELECTRIC	—— E ——
OVERHEAD ELECTRIC	—— OH ——
POWER POLE	
ADA COMPLIANT RAMP W/ DETECTABLE WARNING FIELD	
COMBUSTIBLE FLUIDS	

ALL PAVEMENT IN E LAKESIDE ST AND SAYLE STREET ST RIGHT-OF-WAY SHALL BE TYPE C PAVEMENT PER STANDARD DETAIL DRAWING 4.02

UNDERDRAINS SHALL BE INSTALLED PER STANDARD DETAIL DRAWING 4.05 FOR 75' ON EACH SIDE OF THE LOW POINT, OR TO THE NEAREST CURB HIGH POINT. ALL UNDERDRAIN SHALL BE WRAPPED.

ALL GUTTERS SHALL DRAIN WITH A MINIMUM GRADE OF 0.5% TOWARD STORM SEWER INLETS.

ALL DITCHES SHALL DRAIN WITH A MINIMUM GRADE OF 0.5%

THE CROSS SLOPE OF SIDEWALKS AND BARRIER FREE SIDEWALK CURB RAMPS SHALL TYPICALLY BE 1.5%. THE LONGITUDINAL GRADE OF BARRIER FREE SIDEWALK CURB RAMPS SHALL NOT EXCEED 8.33%. ALL SIDEWALK RAMPS SHALL BE CONSTRUCTED ACCORDING TO S.D.D. 3.04. AT ALL OTHER LOCATIONS THE LONGITUDINAL GRADE OF SIDEWALKS SHALL NOT BE LESS THAN 0.5% AND SHALL DRAIN TOWARD STORM SEWER INLETS. ALL SIDEWALK AND SIDEWALK RAMP ELEVATIONS AND GRADES SHALL BE FIELD VERIFIED AND SET TO COMPLY WITH THE CITY OF MADISON STANDARD SPECIFICATIONS AND THE A.D.A. GUIDELINES.

CURB STATION AND OFFSETS SHALL BE TO THE EDGE OF PAVEMENT UNLESS OTHERWISE INDICATED. CURB ELEVATIONS SHALL BE TO THE EDGE OF PAVEMENT UNLESS OTHERWISE INDICATED.

POWER POLES AND OTHER OBSTRUCTIONS SHALL BE MOVED TO PROVIDE 2 FEET MINIMUM OF CLEAR DISTANCE FROM ANY FACE OF CURB OR EDGE OF SIDEWALK.

ANY INFORMATION SHOWN ON THIS PLAN, WHICH IS NOT PART OF THIS RIGHT-OF-WAY PROJECT, IS PRELIMINARY AND NOT FOR CONSTRUCTION.

THERE MAY BE EXISTING UTILITIES OR OTHER FEATURES WHICH ARE EITHER NOT SHOWN OR SHOWN INCORRECTLY ON THIS PLAN. IT IS THE RESPONSIBILITY OF THE DEVELOPER TO LOCATE AND IDENTIFY ALL UTILITIES AND TOPOGRAPHY WHICH MAY AFFECT THE CONSTRUCTION OF THESE IMPROVEMENTS.

ALL PERMANENT SIGNING AND POSTING WILL BE DETERMINED AND PROVIDED BY THE TRAFFIC ENGINEERING DIVISION, FOLLOWING CONSTRUCTION OF THESE IMPROVEMENTS.

THE DEVELOPER SHALL PROVIDE, INSTALL AND MAINTAIN ALL STREET END BARRICADES, SIGNING AND TRAFFIC CONTROL, AS REQUIRED BY THE CITY TRAFFIC ENGINEER.

PAVEMENT SAWCUTS SHALL BE AS DIRECTED BY THE CITY CONSTRUCTION ENGINEER. SAWCUTS SHOWN ON THE PLAN ARE APPROXIMATE.

ALL WORK IN THE RIGHT OF WAY AND PUBLIC EASEMENTS SHALL BE IN ACCORDANCE WITH THE CITY OF MADISON STANDARD SPECIFICATIONS FOR PUBLIC WORKS CONSTRUCTION

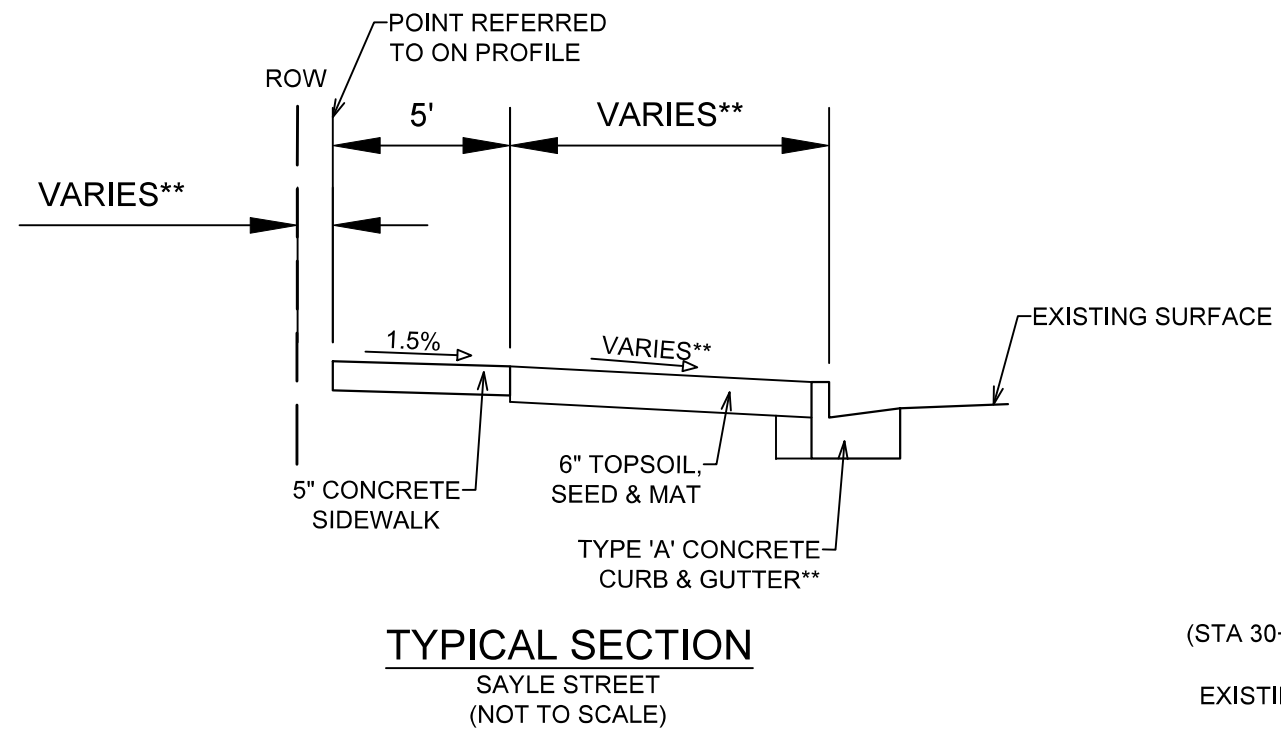
MARK	REVISION	DATE	BY
13555			
Designed By: ID	Date: 3/24/2022 2:02 PM	Scale: NTS	D-1

13555  
MADISON, WI  
9043  
CONTRACT NO:

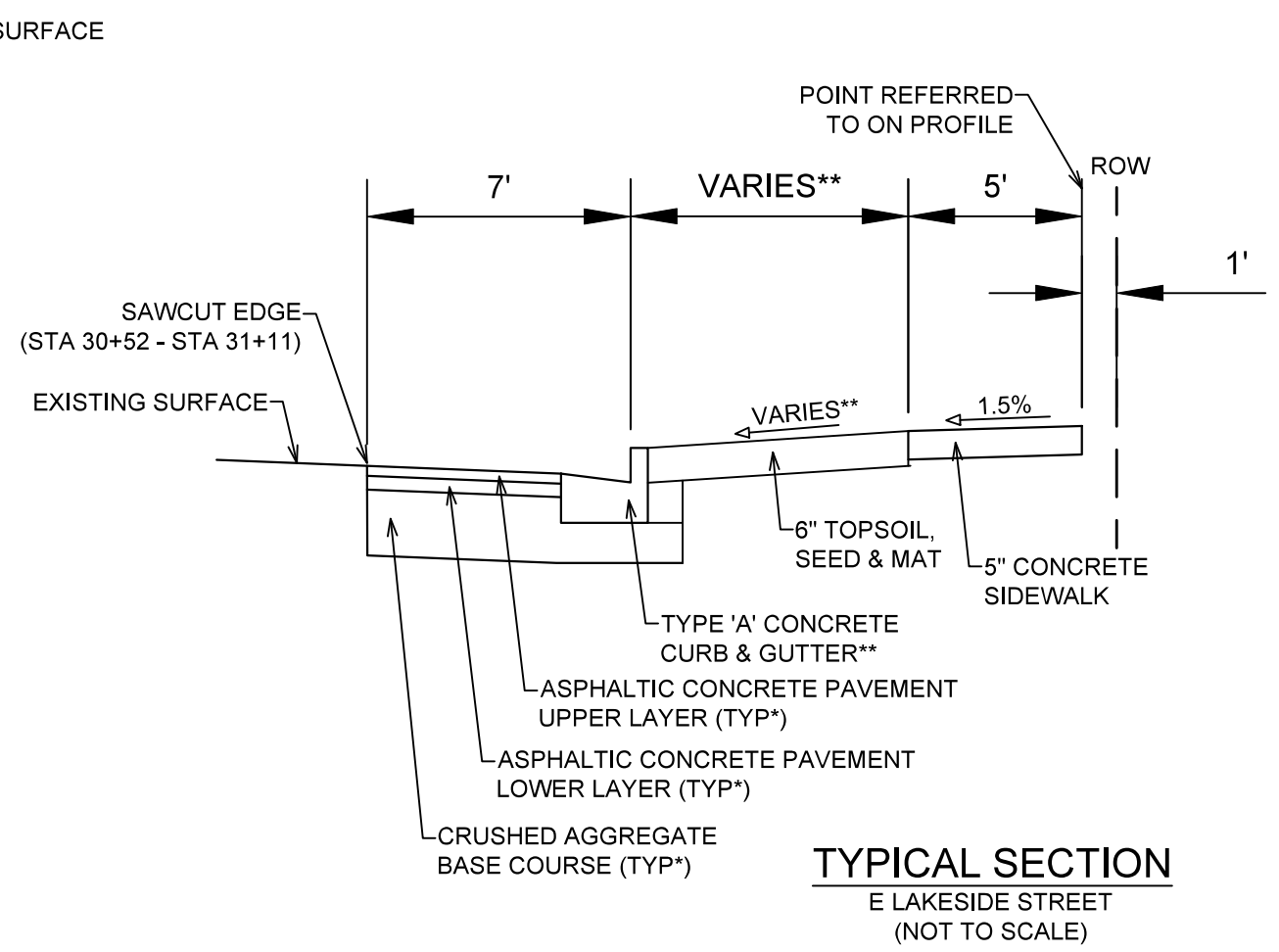
GENERAL NOTES AND COMMENTS  
133 EAST LAKESIDE STREET  
M:\DESIGN\Projects\13555\CAD\Streets\13555EN-Details.dwg



13555  
D-1



**TYPICAL SECTION**  
SAYLE STREET  
(NOT TO SCALE)



**TYPICAL SECTION**  
E LAKESIDE STREET  
(NOT TO SCALE)

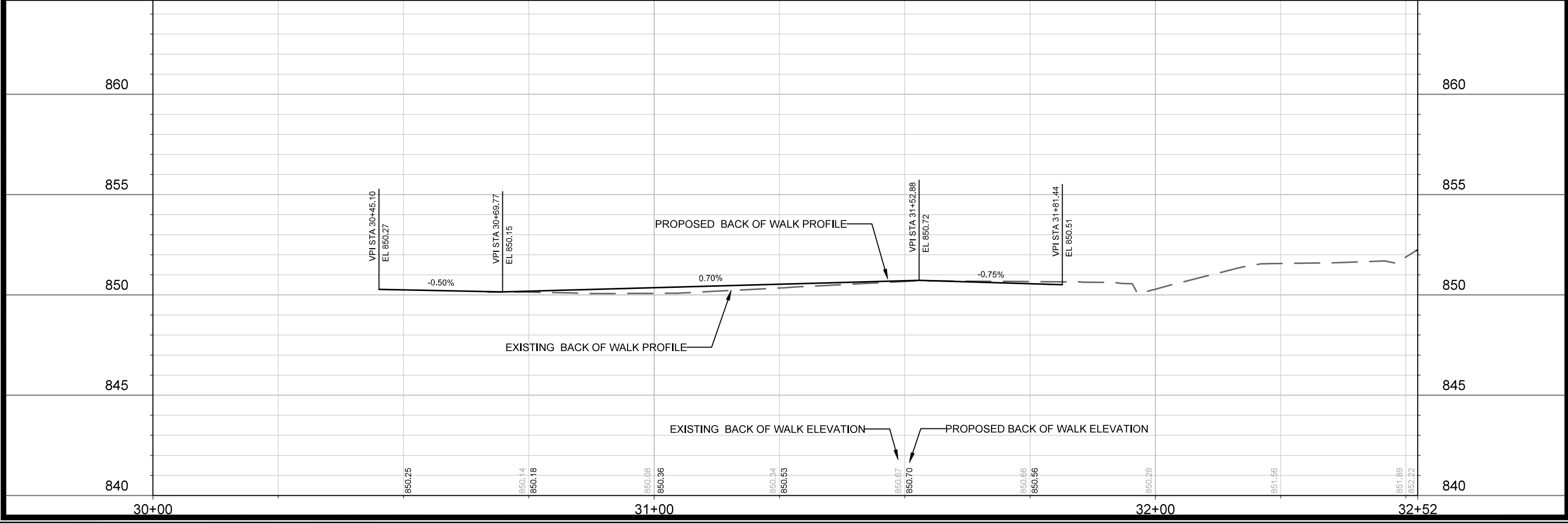
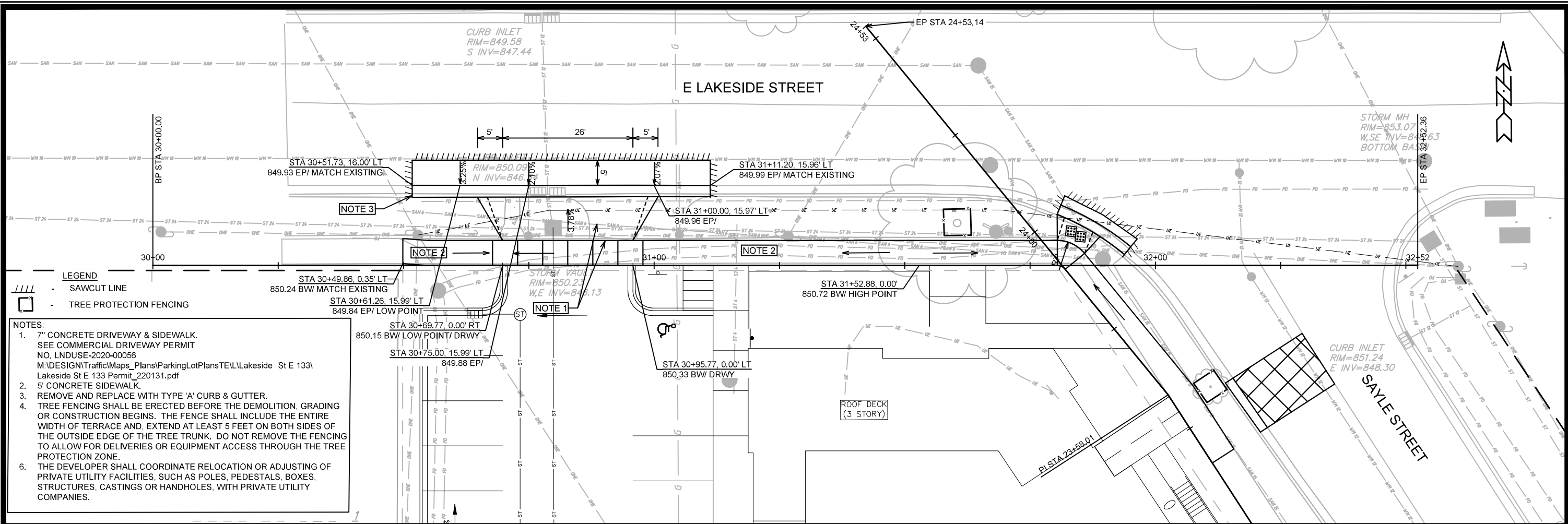
**NOTES:**

- \* E LAKESIDE STREET SHALL BE CONSTRUCTED AS TYPE 'C' PAVEMENT PER CITY OF MADISON MINIMUM PAVEMENT DESIGN†
- \*\* REMOVE AND REPLACE CURB AT LOCATIONS SHOWN ON P SHEETS. SEE PLAN AND PROFILE FOR SLOPES, ELEVATIONS AND OFFSETS.
- THE DEVELOPER SHALL BE RESPONSIBLE FOR SURFACE PAVING UNDER THE SAME CONSTRUCTION PROJECT NO. (13555).

CITY OF MADISON MINIMUM PAVEMENT DESIGN †

TYPE	CRUSHED AGGREGATE BASE COURSE		ASPHALTIC CONCRETE PAVEMENT			
	LOWER LAYER GRADATION 1	UPPER LAYER GRADATION 2	LOWER LAYER		UPPER LAYER	
			TYPE	THICKNESS	TYPE	THICKNESS
A	6"	6"	4 LT 58-28 S	1.75"	4 LT 58-28 S	1.75"
B	6"	6"	3 LT 58-28 S	2.50"	4 LT 58-28 S	2.00"
C	6"	6"	3 MT 58-28 S/H	3.50"	4 MT 58-28 S/H	2.00"

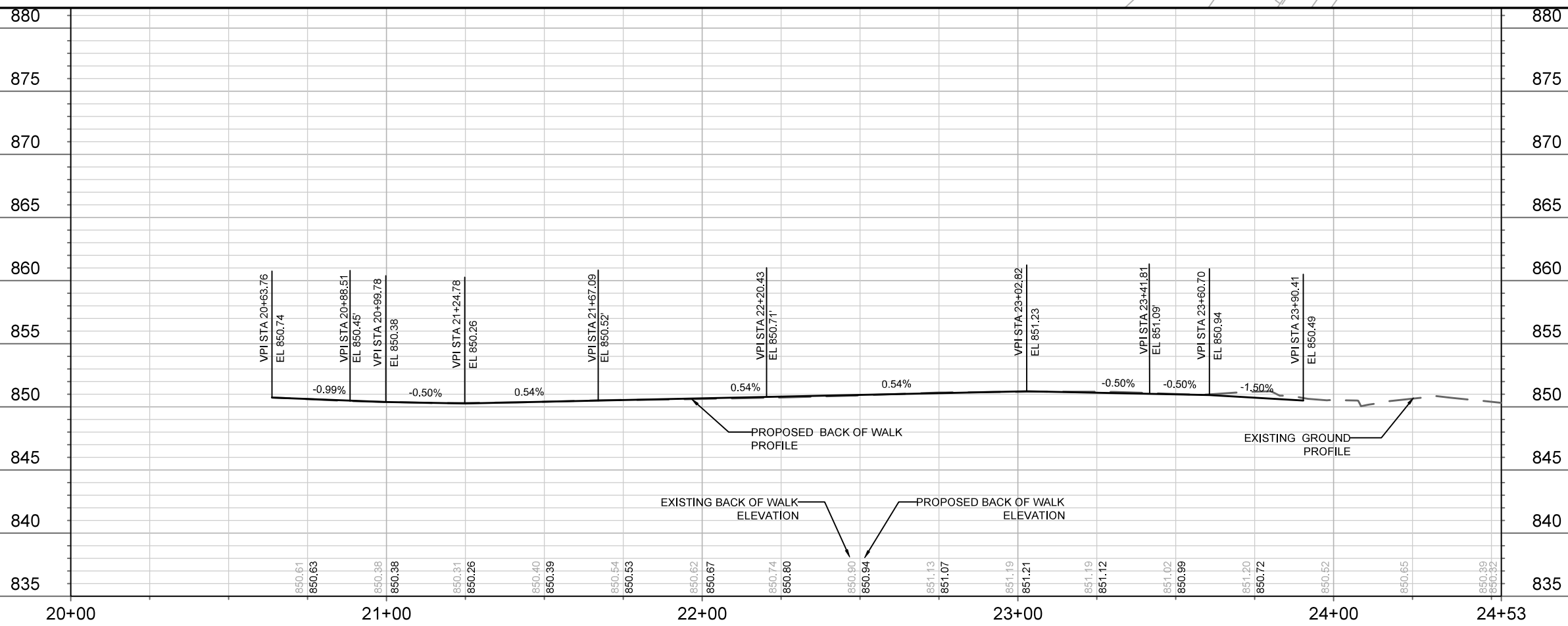
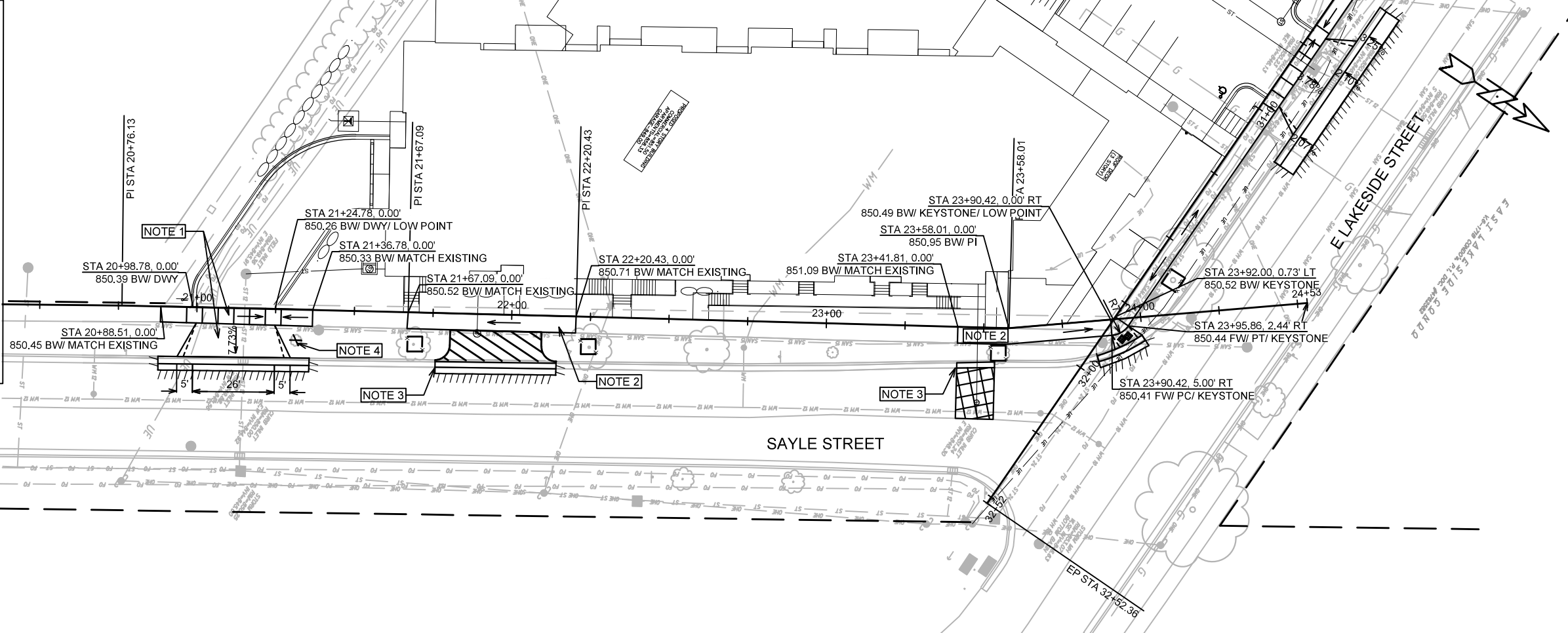
13555  
 MADISON, WI  
 9043  
 CONTRACT NO:  
 13555  
 13555  
 MADISON  
 WISCONSIN  
 13555  
 D-2



13555	13555	13555	13555
MADISON, WI	MADISON, WI	MADISON, WI	MADISON, WI
9043	9043	9043	9043
CONTRACT NO:	CONTRACT NO:	CONTRACT NO:	CONTRACT NO:
E LAKESIDE STREET - SIDEWALK PLAN & PROFILE	E LAKESIDE STREET - SIDEWALK PLAN & PROFILE	E LAKESIDE STREET - SIDEWALK PLAN & PROFILE	E LAKESIDE STREET - SIDEWALK PLAN & PROFILE
133 EAST LAKESIDE STREET	133 EAST LAKESIDE STREET	133 EAST LAKESIDE STREET	133 EAST LAKESIDE STREET
M:\DESIGN\Projects\13555\CAD\Streets\13555EN-PrP.dwg	M:\DESIGN\Projects\13555\CAD\Streets\13555EN-PrP.dwg	M:\DESIGN\Projects\13555\CAD\Streets\13555EN-PrP.dwg	M:\DESIGN\Projects\13555\CAD\Streets\13555EN-PrP.dwg
13555	13555	13555	13555
P-1	P-1	P-1	P-1

- NOTES:**
- 7" CONCRETE DRIVEWAY & SIDEWALK. SEE COMMERCIAL DRIVEWAY PERMIT NO. LNDUSE-2020-00056M\DESIGN\Traffic\Maps\_Plans\ ParkingLotPlans\TE\L\Lakeside St E 133 \Lakeside St E 133 Permit\_220131.pdf
  - 5' CONCRETE SIDEWALK.
  - REMOVE AND REPLACE WITH TYPE 'A' CURB & GUTTER.
  - CITY FORESTRY WILL ISSUE A STREET TREE REMOVAL PERMIT FOR THE TREE 2' DIAMETER ELM TREE DUE TO DRIVEWAY INSTALLATION ALONG SAYLE STREET. THE CONTRACTOR SHALL CONTACT CITY FORESTRY AT (608)266-4816 TO OBTAIN PERMIT.
  - TREE FENCING SHALL BE ERECTED BEFORE THE DEMOLITION, GRADING OR CONSTRUCTION BEGINS. THE FENCE SHALL INCLUDE THE ENTIRE WIDTH OF TERRACE AND, EXTEND AT LEAST 5 FEET ON BOTH SIDES OF THE OUTSIDE EDGE OF THE TREE TRUNK. DO NOT REMOVE THE FENCING TO ALLOW FOR DELIVERIES OR EQUIPMENT ACCESS THROUGH THE TREE PROTECTION ZONE.
  - THERE MAY BE EXISTING UTILITIES OR OTHER FEATURES WHICH ARE EITHER NOT SHOWN OR SHOWN INCORRECTLY ON THIS PLAN. IT IS THE RESPONSIBILITY OF THE DEVELOPER TO LOCATE AND IDENTIFY ALL UTILITIES AND TOPOGRAPHY WHICH MAY AFFECT THE CONSTRUCTION OF THESE IMPROVEMENTS. THE DEVELOPER SHALL COORDINATE RELOCATION OR ADJUSTING OF PRIVATE UTILITY FACILITIES, SUCH AS POLES, PEDESTALS, BOXES, STRUCTURES, CASTINGS OR HANDHOLES, WITH PRIVATE UTILITY COMPANIES.

- LEGEND**
- PAVEMENT PATCH (FINAL LIMITS TO BE DETERMINED BY CONSTRUCTION ENGINEER)
  - REMOVE AND REPLACE WITH 6" TOP SOIL, SEED & MAT.
  - SAWCUT LINE
  - TREE PROTECTION FENCING
  - TREE REMOVAL



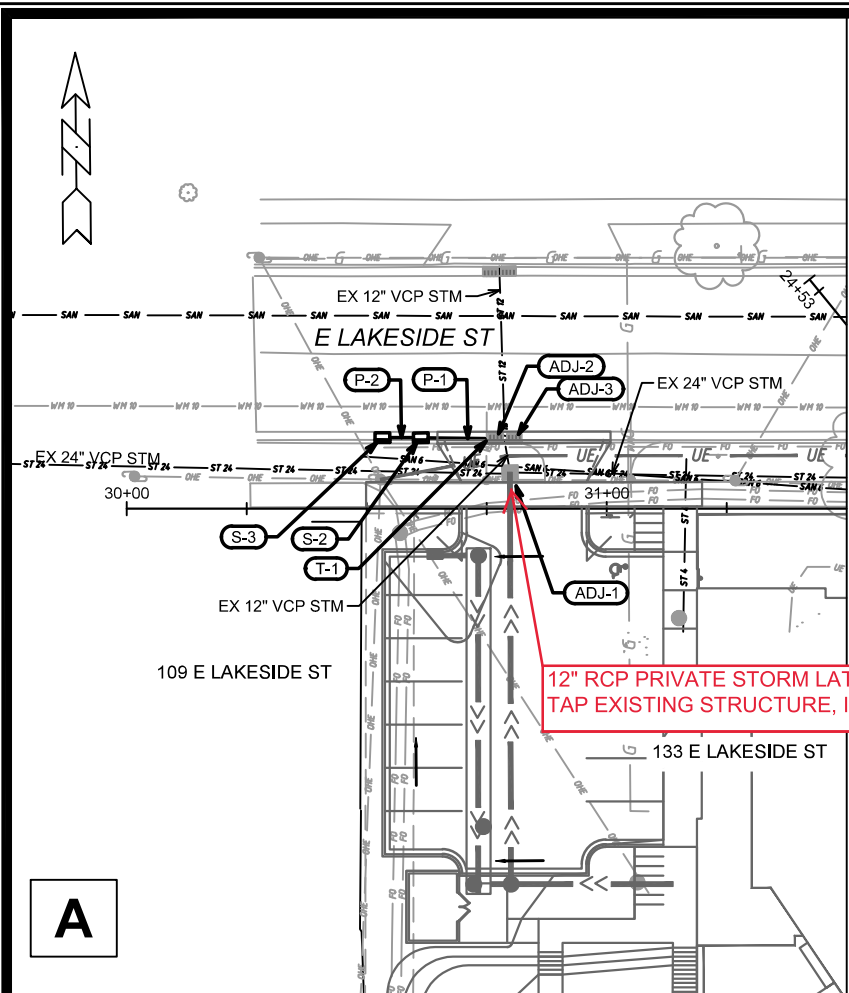
13555  
 MADISON, WI  
 CONTRACT NO: 9043  
 SAYLE STREET- SIDEWALK PLAN & PROFILE  
 133 EAST LAKESIDE STREET  
 M:\DESIGN\Projects\13555\CAD\Streets\13555EN-PnP.dwg  
 13555  
 P-2

MARK	REVISION	DATE	BY
13555			

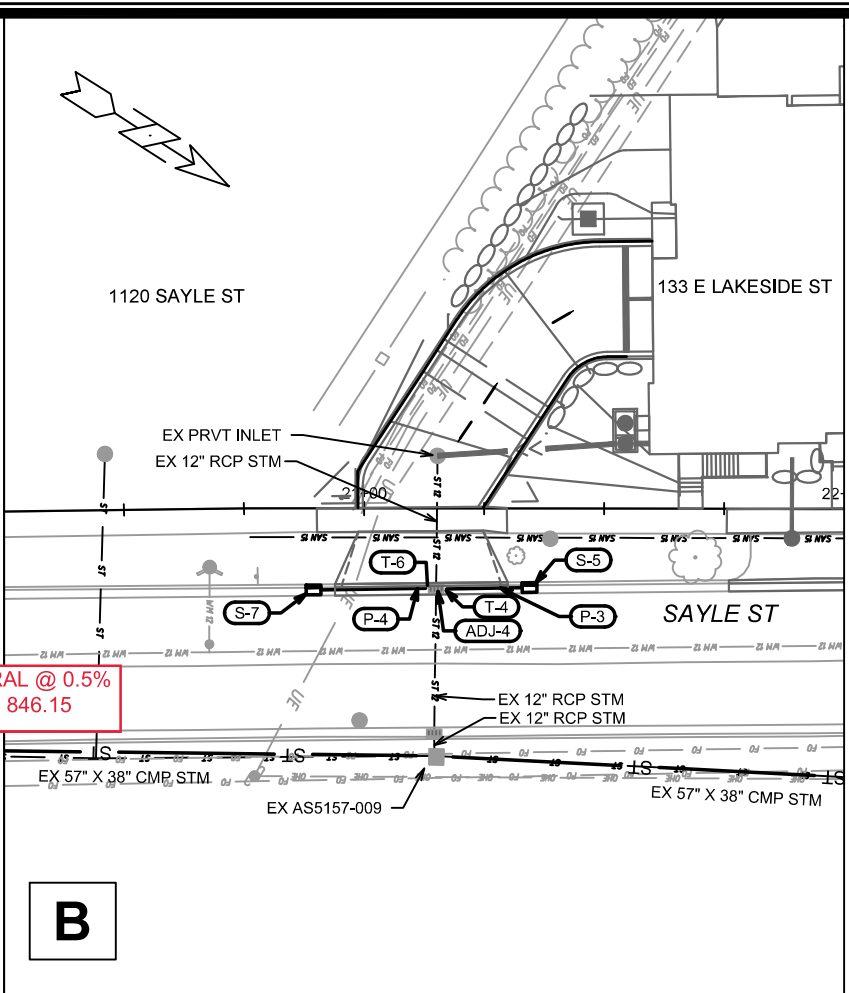
Designed By: ID  
 Date: 4/17/2022 12:12 PM  
 Scale: 1" = 40'  
 P-2







12" RCP PRIVATE STORM LATERAL @ 0.5%  
TAP EXISTING STRUCTURE, IE = 846.15



### STORM SEWER SCHEDULE

REVISED 6/22/22 BY IO

#### PROPOSED STORM STRUCTURES

STRUC. NO.	STATION	LOCATION (OFFSET)	TYPE	TOP OF CASTING	E.I.	DEPTH	NOTES
<b>E LAKESIDE ST</b>							
T-1	30+75.38	LT-14.57	TAP	847.83	-	-	
S-2	30+61.28	LT-14.77	H Inlet	850.22	846.69	3.53	LP; W/3067-7004-VB
S-3	30+53.28	LT-14.80	H Inlet	850.29	846.78	3.51	W/3067-7004-V
<b>SAYLE ST</b>							
T-4	21+16.49	RT-16.74	TAP	846.89	-	-	
S-5	21+34.48	RT-16.46	H Inlet	849.94	846.15	3.79	W/3067-7004-V
T-6	21+13.55	RT-16.64	TAP	846.89	-	-	
S-7	20+89.48	RT-16.97	H Inlet	850.07	846.32	3.75	W/3067-7004-V

#### PROPOSED STORM PIPES

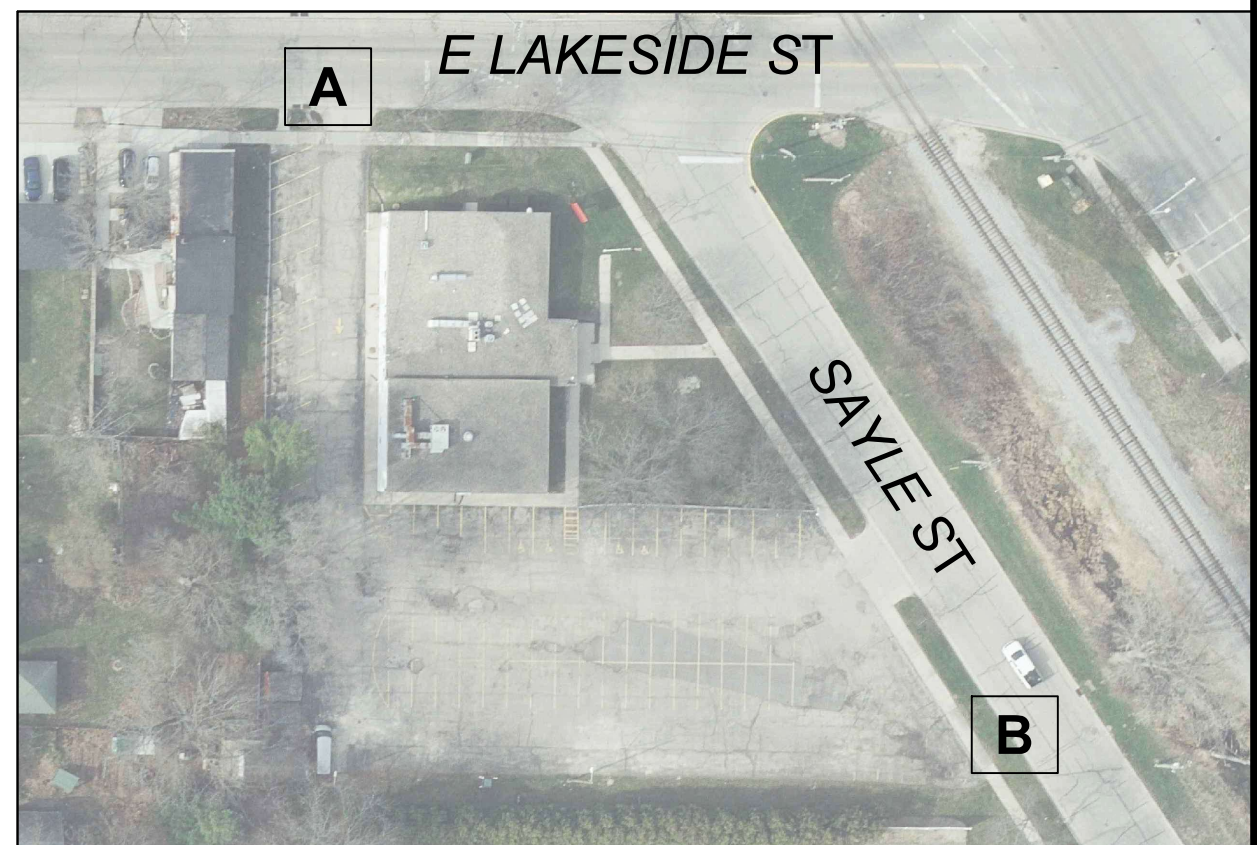
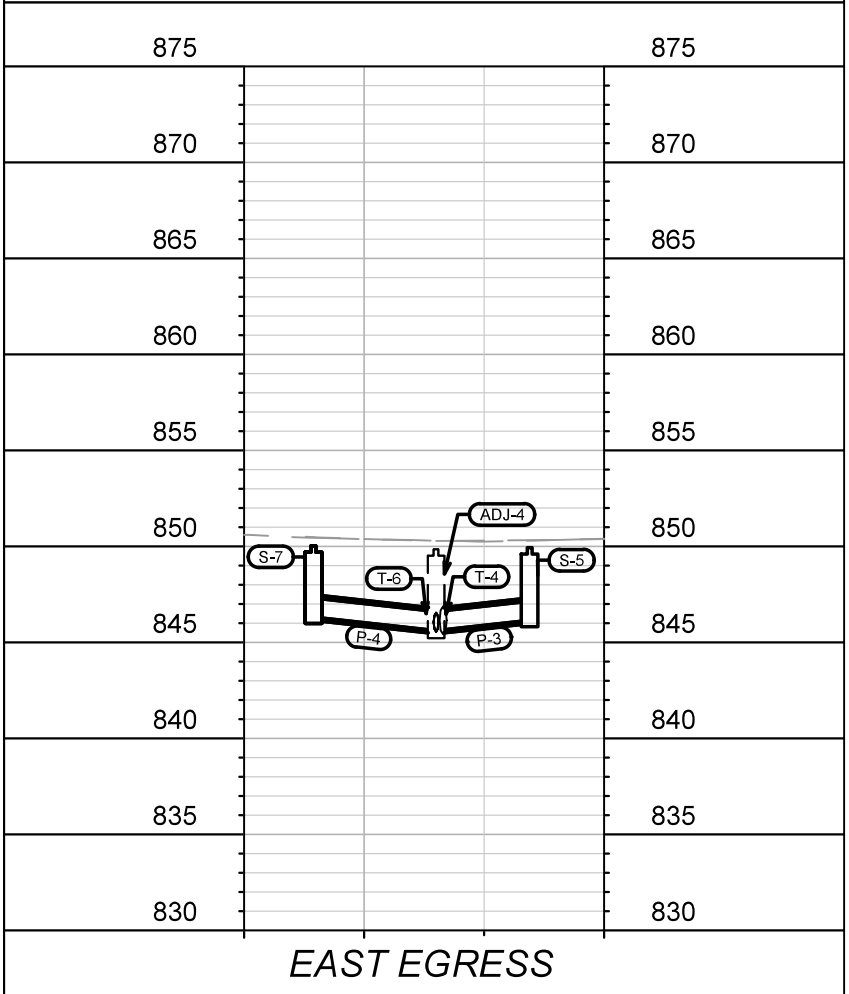
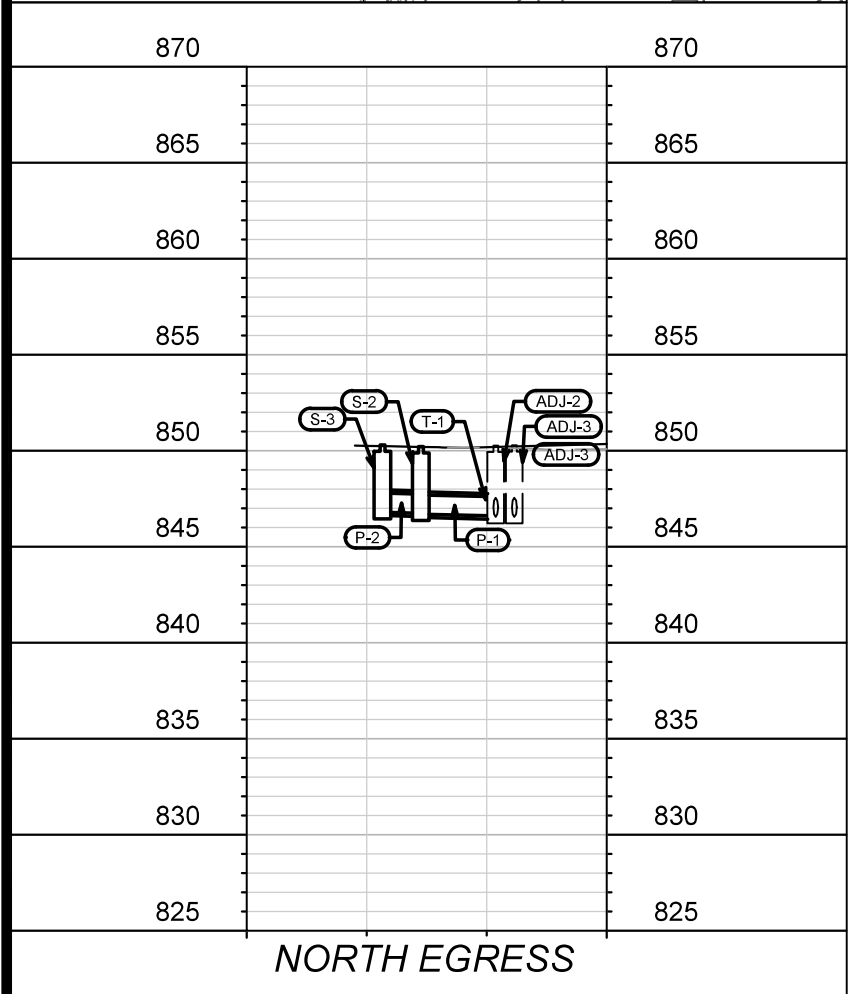
PIPE NO.	FROM (DNSTM)	TO (UPSTM)	DISCH. E.I.	INLET E.I.	PLAN LGTH (FT)	PIPE LGTH (FT)	SLOPE (%)	PIPE TYPE	NOTES
<b>E LAKESIDE ST</b>									
P-1	T-1	S-2	846.60	846.69	14	13	0.62%	12"	TYPE 2 STORM
P-2	S-2	S-3	846.74	846.78	8	5	0.50%	12"	TYPE 2 STORM
<b>SAYLE ST</b>									
P-3	T-4	S-5	845.66	846.15	18	17	2.75%	12"	TYPE 2 STORM
P-4	T-6	S-7	845.66	846.32	24	23	2.75%	12"	TYPE 2 STORM

#### ADJUST STORM STRUCTURES

STRUC. NO.	NAME	STATION	LOCATION (OFFSET)	EX TOC ELEV	ADJUST ELEV	ADJUST DIFF (FT)	NOTES
<b>E LAKESIDE ST</b>							
ADJ-1	AS5157-003	30+79.85	LT-7.53	850.23	850.05	0.18	REBUILD CB ROOF; INSTALL TWO -1550-0054
ADJ-2	IN5157-004	30+76.88	LT-14.58	850.09	850.26	-0.17	W/3290-A
ADJ-3	IN5157-004	30+80.75	LT-14.59	850.09	850.28	-0.19	W/3290-A
<b>SAYLE ST</b>							
ADJ-4	IN5158-007	21+15.02	RT-16.34	849.82	849.86	-0.04	W/3290-A

#### STANDARD NOTES:

- PLAN LENGTH (PAY LENGTH) IS FROM CENTER OF STRUCTURE TO CENTER OF STRUCTURE. PIPE LENGTH IS ACTUAL LENGTH OF PIPE FROM STRUCTURE WALL TO STRUCTURE WALL. SLOPE CALCULATED USING PIPE LENGTH.
- ALL STRUCTURES CALLED OUT AS FIELD POURED SHALL BE FIELD POURED. ALL OTHER STRUCTURES (NOT INDICATED AS FIELD POURED) SHALL BE SUBMITTED TO CITY ENGINEERING FOR APPROVAL IF PRECAST STRUCTURES ARE PREFERRED. CONTACT DANIEL OLIVARES OF CITY ENGINEERING AT (608) 261-9285 FOR PRECAST APPROVALS, OR EMAIL SHOP DRAWINGS TO DAOLIVARES@CITYOFMADISON.COM.
- ALL REBAR FOR FIELD POURED STRUCTURES SHALL BE EPOXY COATED. ANY EXPOSED STEEL SHALL BE TOUCHED UP OR RECOATED PRIOR TO USE.
- ALL FIELD POURED SAS STORM STRUCTURES SHALL BE CONSTRUCTED IN ACCORDANCE WITH STANDARD DETAIL DRAWING 5.7.3. ALL PRECAST SAS STORM STRUCTURES SHALL BE CONSTRUCTED IN ACCORDANCE WITH STANDARD DETAIL DRAWING 5.7.5.
- ABBREVIATIONS: LP - LOW POINT INLET STRUCTURE; CB - CATCHBASIN
- APPROXIMATE DISCHARGE E.I. GIVEN, ADJUST E.I. AND PIPE SLOPE IN THE FIELD.
- TOP OF CASTING GRADE GIVEN IS THE TOP OF CURB FOR INLET STRUCTURES AND THE FLOWLINE OF THE CLOSED CASTING FOR SAS'S.
- ALL REINFORCED CONCRETE PIPES TO BE CLASS III UNLESS OTHERWISE NOTED.
- SURVEYOR TO CONFIRM THAT ALL INLET STATION / OFFSETS LINE UP WITH PROPOSED CURB AND GUTTER.



13555 MADISON, WI 53703 CONTRACT NO: 9043

STORM SEWER PLAN & PROFILE W/ SCHEDULE  
133 EAST LAKESIDE STREET

M:\DESIGN\Projects\13555\CAD\Sewers\13555SWR-PnP.dwg

U-1



EAST LAKESIDE CONDO  
V.8-1718 CONDO, P.1, DOC. #4782562

EAST LAKESIDE STREET  
R/W = 66'

PLUG SEWER LATERALS  
AT PROPERTY LINE  
SEE SEWER PLUG PERMIT  
ENGRSRP-2022-00325

PLUG SEWER LATERALS  
AT PROPERTY LINE  
SEE SEWER PLUG PERMIT  
ENGRSRP-2022-00325

PLUG STORM SEWER LATERALS  
AT PROPERTY LINE  
SEE SEWER PLUG PERMIT  
ENGRSRP-2022-00328

ADJUST SANITARY MH  
AS NECESSARY FOR  
SIDEWALK CONSTRUCTION.

8" WATER SERVICE  
REFER TO PLUMBING PLANS  
FOR INTERIOR CONTINUATION

FIRE DEPARTMENT  
CONNECTION  
  
CAUTION: UTILITY CROSSING  
CONTRACTOR TO FIELD VERIFY LOCATION  
& ELEVATION PRIOR TO CONSTRUCTION

PROPOSED 4 STORY BUILDING  
COMMERCIAL=851.50  
APARTMENTS=858.33  
GARAGE=849.00

PLUG SEWER LATERALS  
AT PROPERTY LINE  
SEE SEWER PLUG PERMIT  
ENGRSRP-2022-00325

S100: 48" CONC SMH  
RIM=850.41  
IE=840.75 SE  
IE=840.75 NW  
IE=841.33 SW  
CONTRACTOR TO FIELD VERIFY  
LOCATION & ELEVATION

17"-8" SANITARY SERVICE @ 1.04%  
REFER TO PLUMBING PLANS FOR  
INTERIOR CONTINUATION

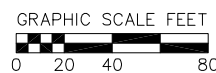
FIRST FLOOR PLAZA  
ELEV.=858.33  
(BASEMENT PARKING BELOW,  
SEE LANDSCAPE PLAN FOR DETAILS)

EXISTING 6' WIDE UTILITY  
EASEMENT, DOC. #2414694  
AND DOC. #2725870

LANDS

PROPOSED UTILITY LEGEND

- >--->---> STORM SEWER PIPE
- >--->---> STORM SEWER MANHOLE
- >--->---> STORM SEWER ENDWALL
- >--->---> STORM SEWER CURB INLET
- >--->---> STORM SEWER CURB INLET W/MANHOLE
- >--->---> STORM SEWER FIELD INLET
- >--->---> ROOF DRAIN CLEANOUT
- >--->---> SANITARY SEWER LATERAL PIPE
- >--->---> SANITARY SEWER CLEANOUT
- >--->---> WATER SERVICE LATERAL PIPE
- >--->---> FIRE HYDRANT
- >--->---> WATER VALVE
- >--->---> CURB STOP
- >--->---> PROPOSED PIPE INSULATION
- >--->---> GAS MAIN
- >--->---> ELECTRIC SERVICE



ABBREVIATIONS

STMH	STORM MANHOLE
FI	FIELD INLET
CI	CURB INLET
CB	CATCH BASIN
EW	ENDWALL
SMH	SANITARY MANHOLE

UTILITY NOTES:

- SANITARY & STORM SEWER LENGTHS SHOWN ARE FROM CENTER OF STRUCTURE TO CENTER OF STRUCTURE. STORM SEWER END SECTIONS ARE INCLUDED IN THE LENGTH AND SLOPE OF THE PIPE.
- CONTRACTOR SHALL INVESTIGATE ALL UTILITY CROSSINGS PRIOR TO CONSTRUCTION AND NOTIFY ENGINEER OF ANY CONFLICTS.
- CONTRACTOR SHALL BE RESPONSIBLE FOR ADJUSTING ALL UTILITY STRUCTURES (MANHOLE RIMS, WATER VALVES, AND CURB STOPS), IF NECESSARY.
- CONTRACTOR SHALL OBTAIN ANY NECESSARY WORK IN RIGHT-OF-WAY, EXCAVATION, UTILITY CONNECTION, PLUGGING, ABANDONMENT, AND DRIVEWAY CONNECTION PERMITS PRIOR TO CONSTRUCTION.
- FOR ALL SEWER AND WATER MAIN CROSSINGS: PROVIDE MINIMUM 18" SEPARATION WHEN WATER MAIN CROSSES BELOW SEWER AND MINIMUM 6" SEPARATION WHEN WATER MAIN CROSSES ABOVE SEWER.
- PRIVATE WATER SERVICES AND PRIVATE WATER MAINS SHALL CONFORM TO ONE OF THE STANDARDS LISTED IN TABLE 384.30-7 OF SPS 384.30(4)(d).
- PRIVATE SANITARY SEWER AND LATERALS SHALL BE POLYVINYL CHLORIDE (PVC) ASTM D3034 - SDR 35 OR APPROVED EQUAL MATERIAL THAT CONFORMS TO ONE OF THE STANDARDS LISTED IN TABLE 384.30-3 OF SPS 384.30(2)(c).
- A MEANS TO LOCATE BURIED UNDERGROUND EXTERIOR NON METALLIC SEWERS/MAINS AND WATER SERVICES/MAINS MUST BE PROVIDED WITH TRACER WIRE OR OTHER METHODS IN ORDER TO BE LOCATED PER SPS 382.10(11)(h) AND SPS 382.40(8)(k).
- EXTERIOR WATER SUPPLY PIPING SETBACKS AND CROSSINGS SHALL BE IN ACCORDANCE WITH SPS 382.40(8)(b.).
- NO PERSON MAY ENGAGE IN PLUMBING WORK IN THE STATE UNLESS LICENSED TO DO SO BY THE DEPARTMENT OF SAFETY AND PROFESSIONAL SERVICES PER S.145.06.
- SITE CONTRACTOR SHALL LEAVE SANITARY AND WATER LATERALS FIVE (5) FEET SHORT (HORIZONTALLY) FROM THE BUILDING. BUILDING PLUMBER SHALL VERIFY SIZE, LOCATION, AND INVERT ELEVATION OF PROPOSED SANITARY AND WATER LATERALS.
- CONTRACTOR SHALL FIELD VERIFY THE SIZE, TYPE, LOCATION, AND ELEVATION OF EXISTING UTILITIES PRIOR TO INSTALLING ANY ON-SITE UTILITIES OR STRUCTURES. CONTACT ENGINEER PRIOR TO INSTALLATION IF DISCREPANCY EXISTS WITHIN THESE PLANS.
- PROPOSED UTILITY SERVICE LINES SHOWN ARE APPROXIMATE. COORDINATE THE EXACT LOCATIONS WITH THE PLUMBING DRAWINGS. COORDINATE THE LOCATIONS WITH THE PLUMBING CONTRACTOR AND/OR OWNER'S CONSTRUCTION REPRESENTATIVE PRIOR TO INSTALLATION OF ANY NEW UTILITIES.
- CONTRACTOR SHALL BE RESPONSIBLE FOR COORDINATING THE RELOCATION OF ANY UTILITIES ENCOUNTERED AND REPLACEMENT OF ANY UTILITIES DAMAGED WITHIN INFLUENCE ZONE OF NEW CONSTRUCTION. CONTACT ENGINEER IF THE EXISTING UTILITIES VARY APPRECIABLY FROM THE PLANS.
- ALL WATER MAIN AND SERVICES SHALL BE INSTALLED AT A MINIMUM DEPTH OF 6.5' FROM TOP OF FINISHED GROUND ELEVATION TO TOP OF MAIN.
- IT IS THE CONTRACTOR'S RESPONSIBILITY TO VERIFY THAT THE EXISTING VALVES WILL HOLD THE PRESSURE TEST PRIOR TO CONNECTION. THE CITY IS NOT RESPONSIBLE FOR ANY COSTS INCURRED DUE TO THE CONTRACTOR NOT VERIFYING THAT THE EXISTING VALVE WILL HOLD THE PRESSURE TEST PRIOR TO CONNECTION. IF A NEW VALVE IS REQUIRED, THE APPLICANT WILL BE REQUIRED TO INSTALL ONE AT THEIR EXPENSE, AT THE POINT OF CONNECTION.
- THE RIGHT-OF-WAY IS THE SOLE JURISDICTION OF THE CITY OF MADISON AND IS SUBJECT TO CHANGE AT ANYTIME PER THE RECOMMENDATION/PLAN OF TRAFFIC ENGINEERING AND CITY ENGINEERING DEPARTMENTS.

RIGHT-OF-WAY WORK:

- ALL WORK WITHIN THE PUBLIC RIGHT-OF-WAY AND ALL PUBLIC IMPROVEMENTS NECESSARY TO SERVE THE PROJECT ARE TO BE COMPLETED PER THE CITY ISSUED PLANS. (CONTRACT #9043, PROJECT #13555)
- THE RIGHT-OF-WAY IS THE SOLE JURISDICTION OF THE CITY OF MADISON AND IS SUBJECT TO CHANGE AT ANYTIME PER THE RECOMMENDATION/PLAN OF TRAFFIC ENGINEERING AND CITY ENGINEERING DEPARTMENTS.

Utility Plan - Sanitary Sewer & Water  
133 E Lakeside Street  
City of Madison  
Dane County, Wisconsin

NO.	DATE	REVISIONS	REMARKS

CONTRACT #9043  
CITY PROJECT #13555

U-2