

Madison, Wisconsin

# CITY OF MADISON

## CITY ENGINEERING DIVISION

### DEPARTMENT OF PUBLIC WORKS

# PLAN OF PROPOSED IMPROVEMENT

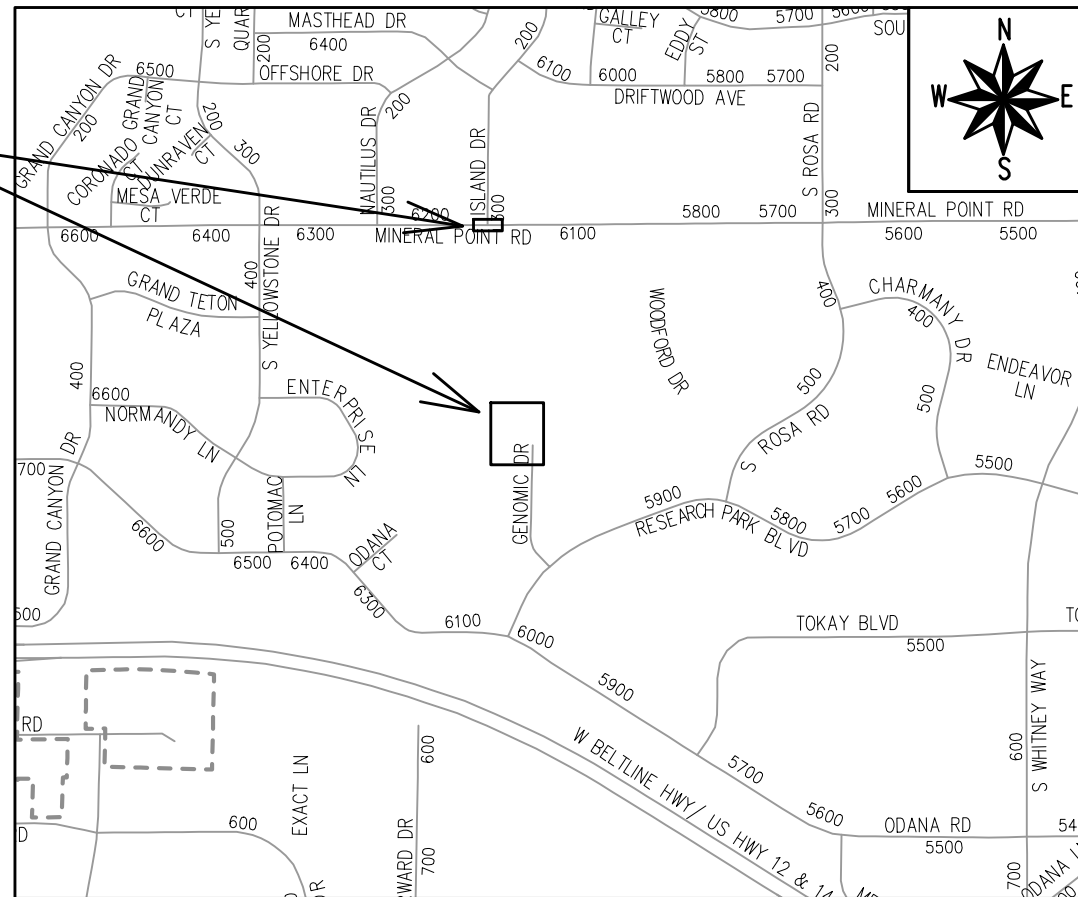
## 502 GENOMIC DRIVE

**INDEX OF SHEETS**

SHEET NO.	STANDARD NOTES
D1	STANDARD NOTES
D2-D4	TYPICAL SECTIONS
E-1	STREET LIGHTING
P1-P3	PLAN & PROFILES
U1	UTILITY PLAN & PROFILES
U2	STORM SEWER SCHEDULE
C136	STORM SEWER BASIN PLAN AND PROFILE
W1	WATER PLAN & PROFILE
W2	WATER IMPACT PLAN
W3	WATER ESTIMATE OF MATERIALS
X1-X6	CROSS SECTIONS
MN-1	MAINTENANCE PLAN

CITY PROJECT NO. 13762  
CONTRACT NO. 9064

**PROJECT LOCATION**



PUBLIC IMPROVEMENT PROJECT APPROVED

AUGUST 31, 2021

BY THE COMMON COUNCIL OF MADISON, WISCONSIN

PUBLIC IMPROVEMENT DESIGN APPROVED BY:

*Greg Fries* Apr 20, 2022

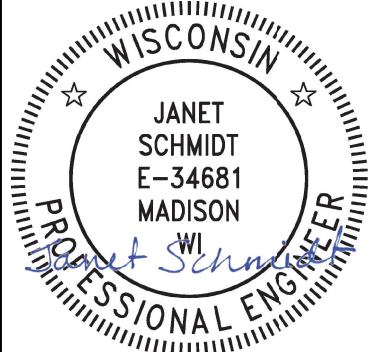
City Engineer Date

STREET GRADES DESIGNED BY:



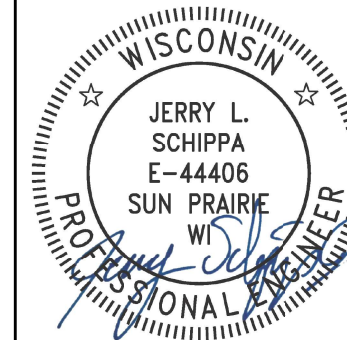
Apr 20, 2022

STORM SEWER DESIGNED BY:



Apr 20, 2022

ELECTRICAL PLANS DESIGNED BY:



Apr 20, 2022

WATER DESIGNED BY:



Apr 20, 2022

PLOT SCALE: 1:1\_XREF

PLOT NAME: ---

REV. DATE: 4/19/2022 2:11 PM




ORIGINATOR: CITY\_OF\_MADISON

ALL PROPOSED STREET TREE REMOVALS WITHIN THE RIGHT OF WAY SHALL BE REVIEWED BY CITY FORESTRY BEFORE THE PLAN COMMISSION MEETING. STREET TREE REMOVALS REQUIRE APPROVAL AND A TREE REMOVAL PERMIT ISSUED BY CITY FORESTRY. ANY STREET TREE REMOVALS REQUESTED AFTER THE DEVELOPMENT PLAN IS APPROVED BY THE PLAN COMMISSION OR THE BOARD OF PUBLIC WORKS AND CITY FORESTRY WILL REQUIRE A MINIMUM OF A 72-HOUR REVIEW PERIOD WHICH SHALL INCLUDE THE NOTIFICATION OF THE ALDERPERSON WITHIN WHO'S DISTRICT IS AFFECTED BY THE STREET TREE REMOVAL(S) PRIOR TO A TREE REMOVAL PERMIT BEING ISSUED.

AS DEFINED BY THE SECTION 107.13 OF CITY OF MADISON STANDARD SPECIFICATIONS FOR PUBLIC WORKS CONSTRUCTION: NO EXCAVATION IS PERMITTED WITHIN 5 FEET OF THE TRUNK OF THE STREET TREE OR WHEN CUTTING ROOTS OVER 3 INCHES IN DIAMETER. IF EXCAVATION IS NECESSARY, THE CONTRACTOR SHALL CONTACT MADISON CITY FORESTRY (266-4816) PRIOR TO EXCAVATION. CITY OF MADISON FORESTRY PERSONNEL SHALL ASSESS THE IMPACT TO THE TREE AND TO ITS ROOT SYSTEM PRIOR TO WORK COMMENCING. TREE PROTECTION SPECIFICATIONS CAN BE FOUND ON THE FOLLOWING WEBSITE: [HTTPS://WWW.CITYOFMADISON.COM/BUSINESS/PW/SPECS.CFM](https://www.cityofmadison.com/business/pw/specs.cfm)

DEVELOPER MUST SUBMIT A TRAFFIC CONTROL PLAN TO CITY TRAFFIC ENGINEERING AT LEAST 14 DAYS PRIOR TO THE START OF WORK. WORK SHALL NOT PROCEED UNTIL AN APPROVED TRAFFIC CONTROL PLAN IS IN PLACE.

CONTACT PROJECT ENGINEER AND STREET DESIGNER LUKAS COLLINS AT [LCOLLINS@CITYOFMADISON.COM](mailto:LCOLLINS@CITYOFMADISON.COM) FOR CAD AND ALIGNMENT DATA PRIOR TO STAKING.

CONVENTIONAL SIGNS	
FIELD VERIFY ALL UTILITY LOCATIONS	
GAS	— G —
STORM SEWER	— ST —
SANITARY SEWER	— SN —
WATER	— W —
BURIED ELECTRIC	— E —
OVERHEAD ELECTRIC	— OH —
POWER POLE	
ADA COMPLIANT RAMP W/ DETECTABLE WARNING FIELD	
COMBUSTIBLE FLUIDS	

ALL PAVEMENT IN THE GENOMIC DRIVE RIGHT-OF-WAYS SHALL BE TYPE A PAVEMENT PER STANDARD DETAIL DRAWING 4.02.

UNDERDRAINS SHALL BE INSTALLED PER STANDARD DETAIL DRAWING 4.05 FOR 75' ON EACH SIDE OF THE LOW POINT, OR TO THE NEAREST CURB HIGH POINT. ALL UNDERDRAIN SHALL BE WRAPPED.

ALL GUTTERS SHALL DRAIN WITH A MINIMUM GRADE OF 0.5% TOWARD STORM SEWER INLETS.

ALL DITCHES SHALL DRAIN WITH A MINIMUM GRADE OF 0.5%

THE CROSS SLOPE OF SIDEWALKS AND BARRIER FREE SIDEWALK CURB RAMPS SHALL TYPICALLY BE 1.5%. THE LONGITUDINAL GRADE OF BARRIER FREE SIDEWALK CURB RAMPS SHALL NOT EXCEED 8.33%. ALL SIDEWALK RAMPS SHALL BE CONSTRUCTED ACCORDING TO S.D.D. 3.04. AT ALL OTHER LOCATIONS THE LONGITUDINAL GRADE OF SIDEWALKS SHALL NOT BE LESS THAN 0.5% AND SHALL DRAIN TOWARD STORM SEWER INLETS. ALL SIDEWALK AND SIDEWALK RAMP ELEVATIONS AND GRADES SHALL BE FIELD VERIFIED AND SET TO COMPLY WITH THE CITY OF MADISON STANDARD SPECIFICATIONS AND THE A.D.A. GUIDELINES.

CURB STATION AND OFFSETS SHALL BE TO THE EDGE OF PAVEMENT UNLESS OTHERWISE INDICATED. CURB ELEVATIONS SHALL BE TO THE EDGE OF PAVEMENT UNLESS OTHERWISE INDICATED.

POWER POLES AND OTHER OBSTRUCTIONS SHALL BE MOVED TO PROVIDE 2 FEET MINIMUM OF CLEAR DISTANCE FROM ANY FACE OF CURB OR EDGE OF SIDEWALK.

ANY INFORMATION SHOWN ON THIS PLAN, WHICH IS NOT PART OF THIS RIGHT-OF-WAY PROJECT, IS PRELIMINARY AND NOT FOR CONSTRUCTION.

THERE MAY BE EXISTING UTILITIES OR OTHER FEATURES WHICH ARE EITHER NOT SHOWN OR SHOWN INCORRECTLY ON THIS PLAN. IT IS THE RESPONSIBILITY OF THE DEVELOPER TO LOCATE AND IDENTIFY ALL UTILITIES AND TOPOGRAPHY WHICH MAY AFFECT THE CONSTRUCTION OF THESE IMPROVEMENTS.

ALL PERMANENT SIGNING AND POSTING WILL BE DETERMINED AND PROVIDED BY THE TRAFFIC ENGINEERING DIVISION, FOLLOWING CONSTRUCTION OF THESE IMPROVEMENTS.

THE DEVELOPER SHALL PROVIDE, INSTALL AND MAINTAIN ALL STREET END BARRICADES, SIGNING AND TRAFFIC CONTROL, AS REQUIRED BY THE CITY TRAFFIC ENGINEER.

PAVEMENT SAWCUTS SHALL BE AS DIRECTED BY THE CITY CONSTRUCTION ENGINEER. SAWCUTS SHOWN ON THE PLAN ARE APPROXIMATE.

ALL WORK IN THE RIGHT OF WAY AND PUBLIC EASEMENTS SHALL BE IN ACCORDANCE WITH THE CITY OF MADISON STANDARD SPECIFICATIONS FOR PUBLIC WORKS CONSTRUCTION

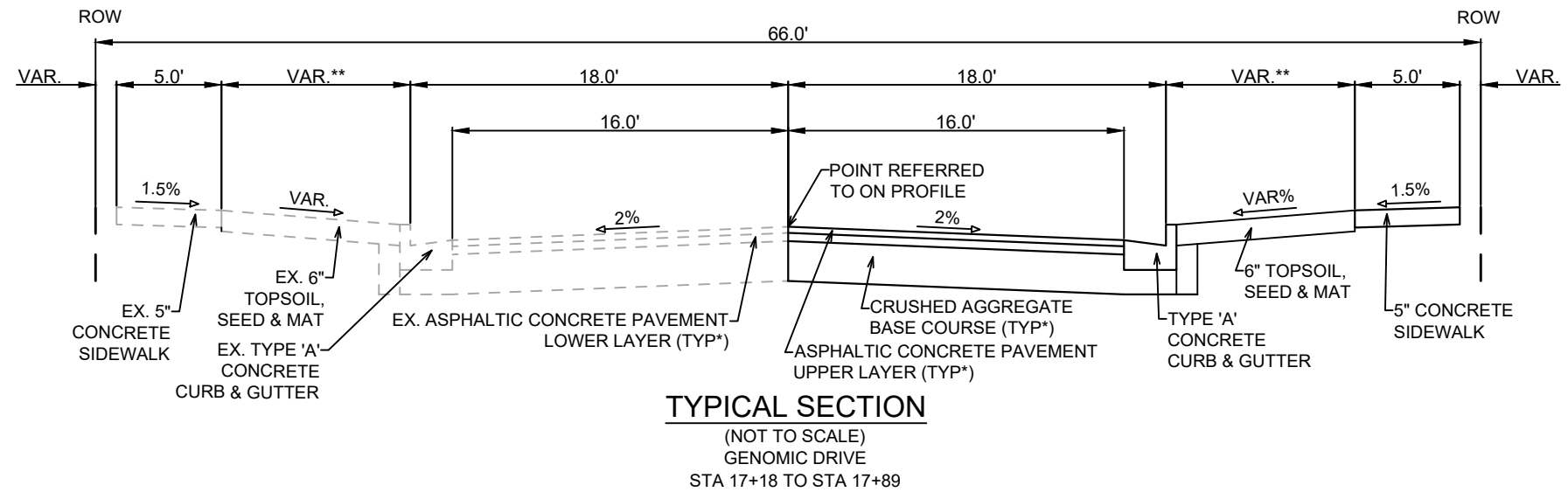
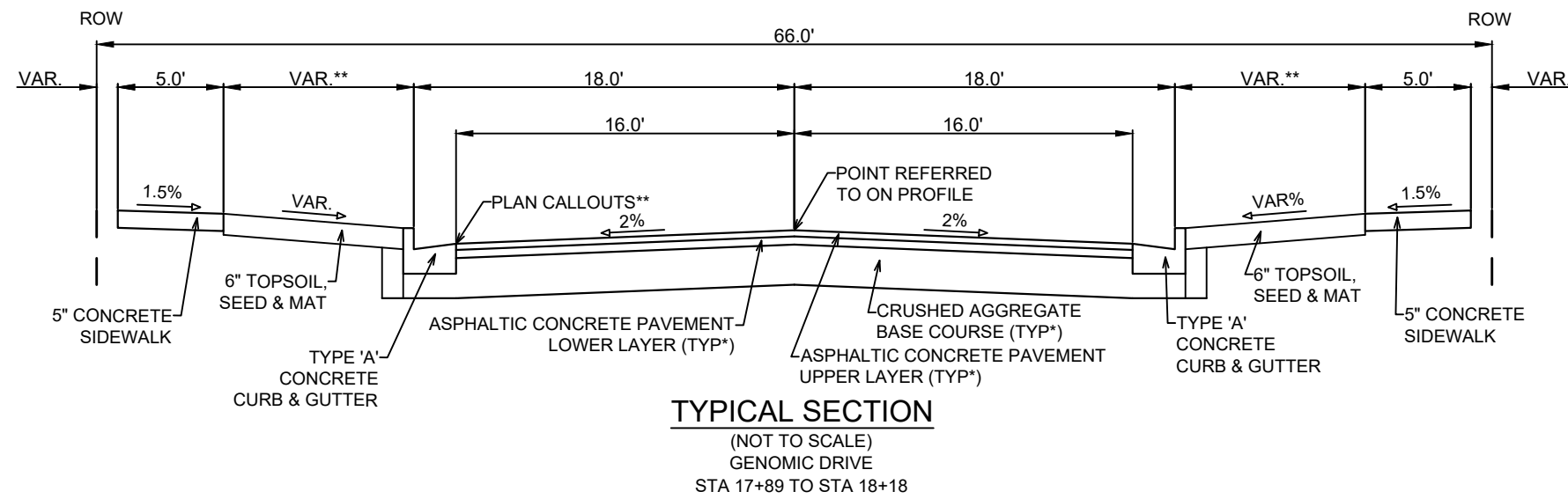
MARK	REVISION	DATE	BY

13762  
MADISON, WI  
9064  
CONTRACT NO:

STANDARD NOTES  
502 GENOMIC DRIVE  
M:\DESIGN\Projects\13762\CAD\Streets\13762EN-Details.dwg



13762  
D-1



**NOTES:**

\* GENOMIC DRIVE SHALL BE CONSTRUCTED AS TYPE 'A' PAVEMENT PER CITY OF MADISON MINIMUM PAVEMENT DESIGN†

\*\* SEE PLAN AND PROFILE FOR SLOPES, ELEVATIONS AND OFFSETS

- THE DEVELOPER SHALL BE RESPONSIBLE FOR SURFACE PAVING (CONTRACT NO. 9064).

CITY OF MADISON MINIMUM PAVEMENT DESIGN †

TYPE	CRUSHED AGGREGATE BASE COURSE		ASPHALTIC CONCRETE PAVEMENT			
	LOWER LAYER GRADATION 1	UPPER LAYER GRADATION 2	LOWER LAYER		UPPER LAYER	
			TYPE	THICKNESS	TYPE	THICKNESS
A	6"	6"	4 LT 58-28 S	1.75"	4 LT 58-28 S	1.75"
B	6"	6"	3 LT 58-28 S	2.50"	4 LT 58-28 S	2.00"
C	6"	6"	3 MT 58-28 S/H	3.50"	4 MT 58-28 S/H	2.00"

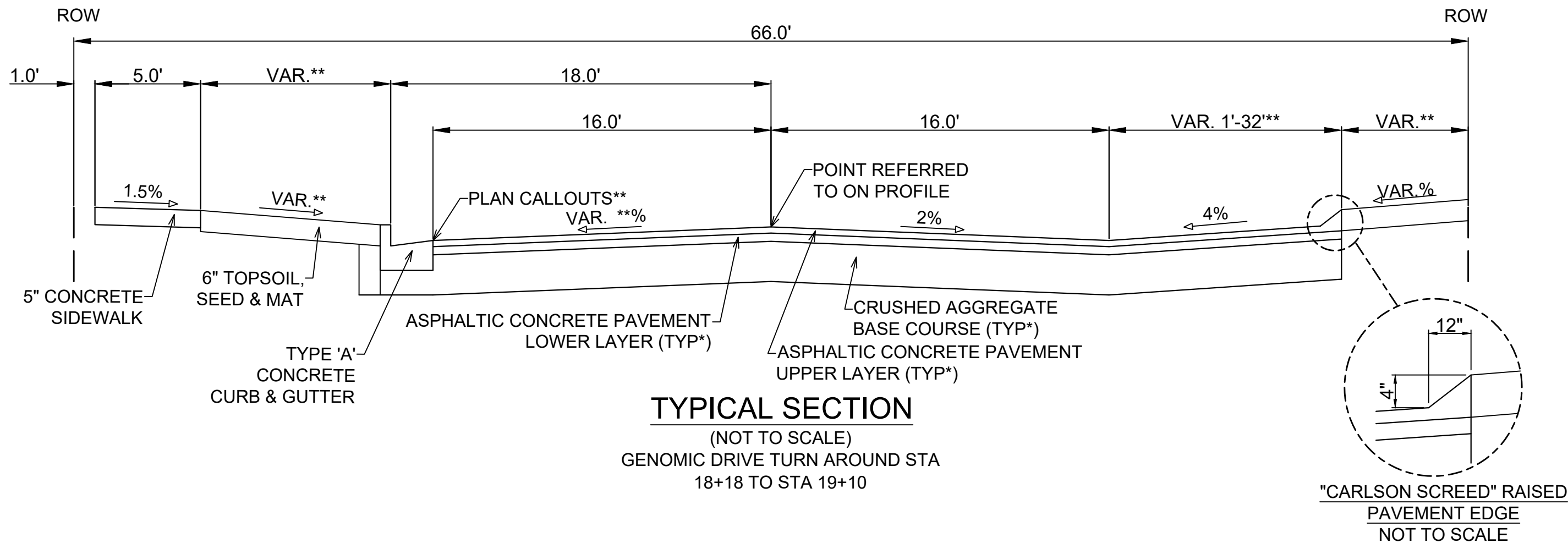
DATE	BY
REVISION	
DESIGNED BY: LMC	DATE: 4/19/2022 2:04 PM
SCALE:	
13762	D-2

13762  
MADISON, WI  
9064  
CONTRACT NO:

TYPICAL SECTION  
502 GENOMIC DRIVE  
M:\DESIGN\Projects\13762\CAD\Streets\13762EN-Details.dwg



13762  
D-2



**TYPICAL SECTION**  
 (NOT TO SCALE)  
 GENOMIC DRIVE TURN AROUND STA  
 18+18 TO STA 19+10

"CARLSON SCREED" RAISED  
 PAVEMENT EDGE  
 NOT TO SCALE

**NOTES:**

\* GENOMIC DRIVE SHALL BE CONSTRUCTED AS TYPE 'A' PAVEMENT PER CITY OF MADISON MINIMUM PAVEMENT DESIGN†

\*\* SEE PLAN AND PROFILE FOR SLOPES, ELEVATIONS AND OFFSETS

-THE DEVELOPER SHALL BE RESPONSIBLE FOR SURFACE PAVING (CONTRACT NO. 9064).

CITY OF MADISON MINIMUM PAVEMENT DESIGN †

TYPE	CRUSHED AGGREGATE BASE COURSE		ASPHALTIC CONCRETE PAVEMENT			
	LOWER LAYER GRADATION 1	UPPER LAYER GRADATION 2	LOWER LAYER		UPPER LAYER	
			TYPE	THICKNESS	TYPE	THICKNESS
A	6"	6"	4 LT 58-28 S	1.75"	4 LT 58-28 S	1.75"
B	6"	6"	3 LT 58-28 S	2.50"	4 LT 58-28 S	2.00"
C	6"	6"	3 MT 58-28 S/H	3.50"	4 MT 58-28 S/H	2.00"

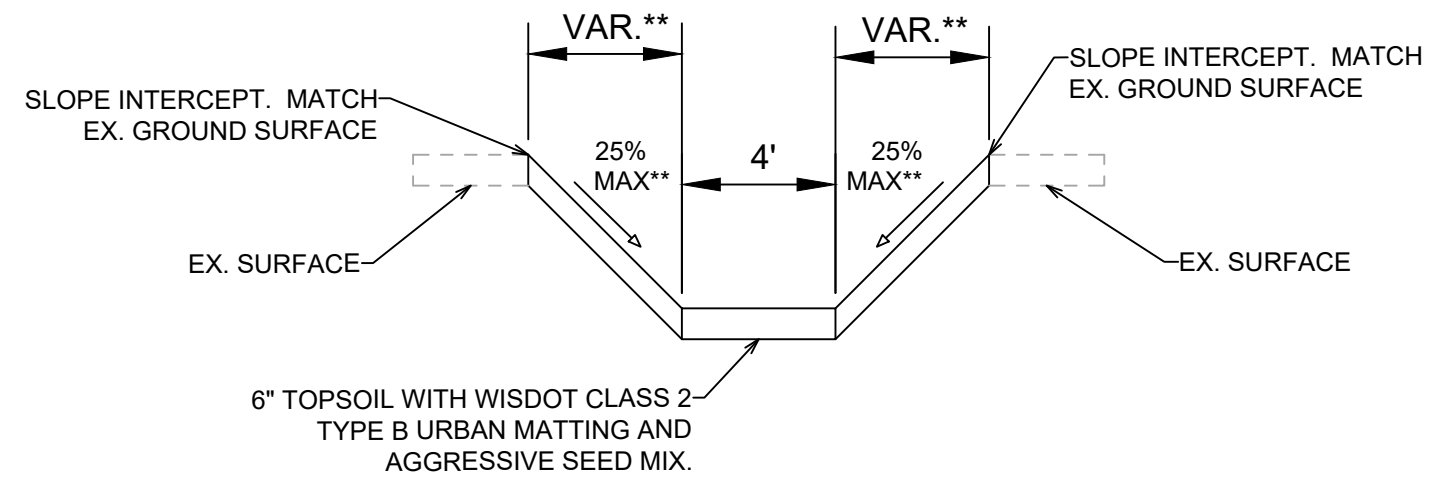
DATE	BY
REVISION	
Designed By: LMC	Date: 4/19/2022 2:04 PM
13762	Scale: ---
13762	D-3

13762  
 MADISON, WI  
 CONTRACT NO: 9064

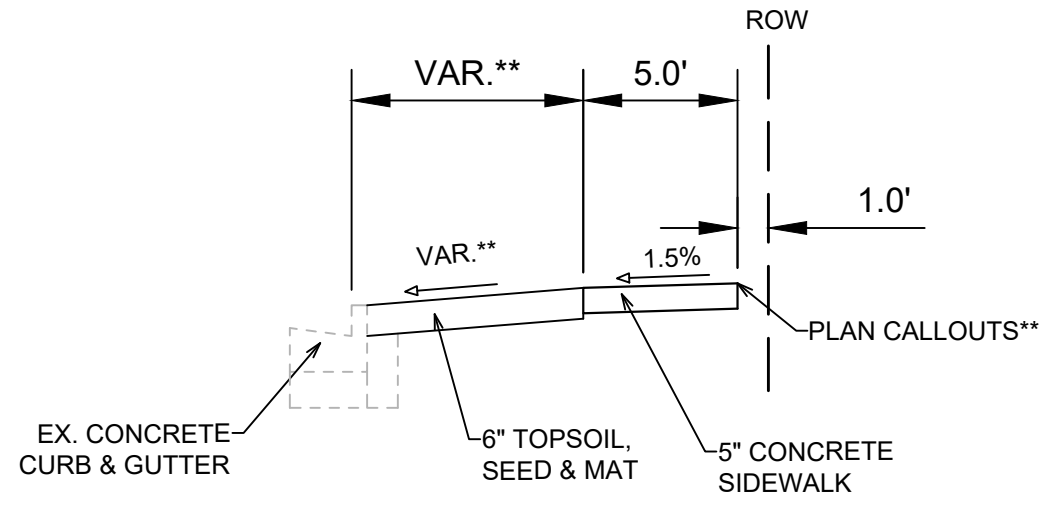
TYPICAL SECTION  
 502 GENOMIC DRIVE  
 M:\DESIGN\Projects\13762\CAD\Streets\13762EN-Details.dwg



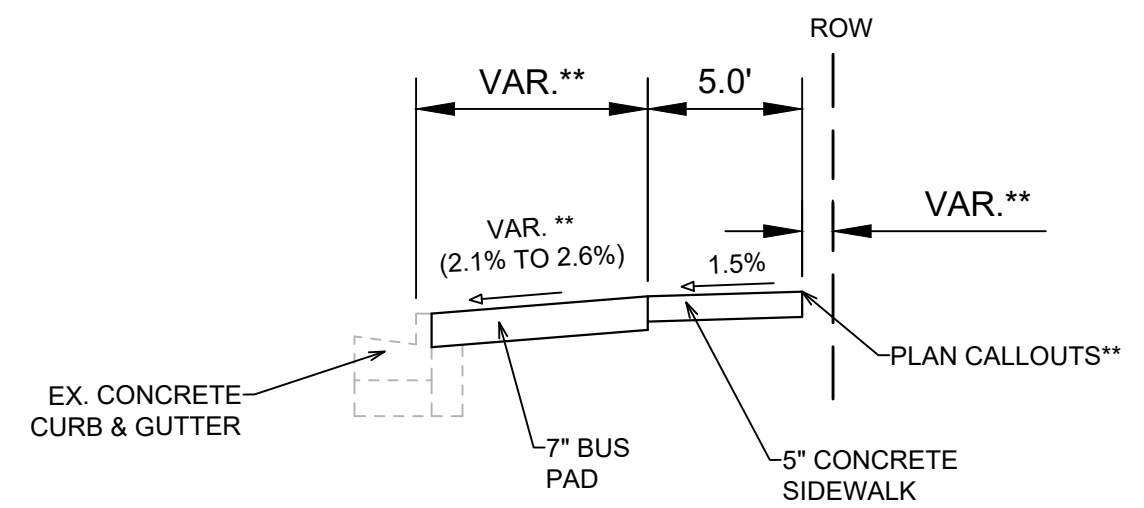
13762  
 D-3



**TYPICAL DITCH SECTION**  
 (NOT TO SCALE)  
 STA 82+00 TO 82+42



**TYPICAL SIDEWALK SECTION**  
 (NOT TO SCALE)  
 MINERAL POINT ROAD  
 STA 203+86 TO STA 204+10  
 STA 204+60 TO STA 203+69



**TYPICAL BUS PAD SECTION**  
 (NOT TO SCALE)  
 MINERAL POINT ROAD  
 STA 204+10 TO STA 204+60

**NOTES:**

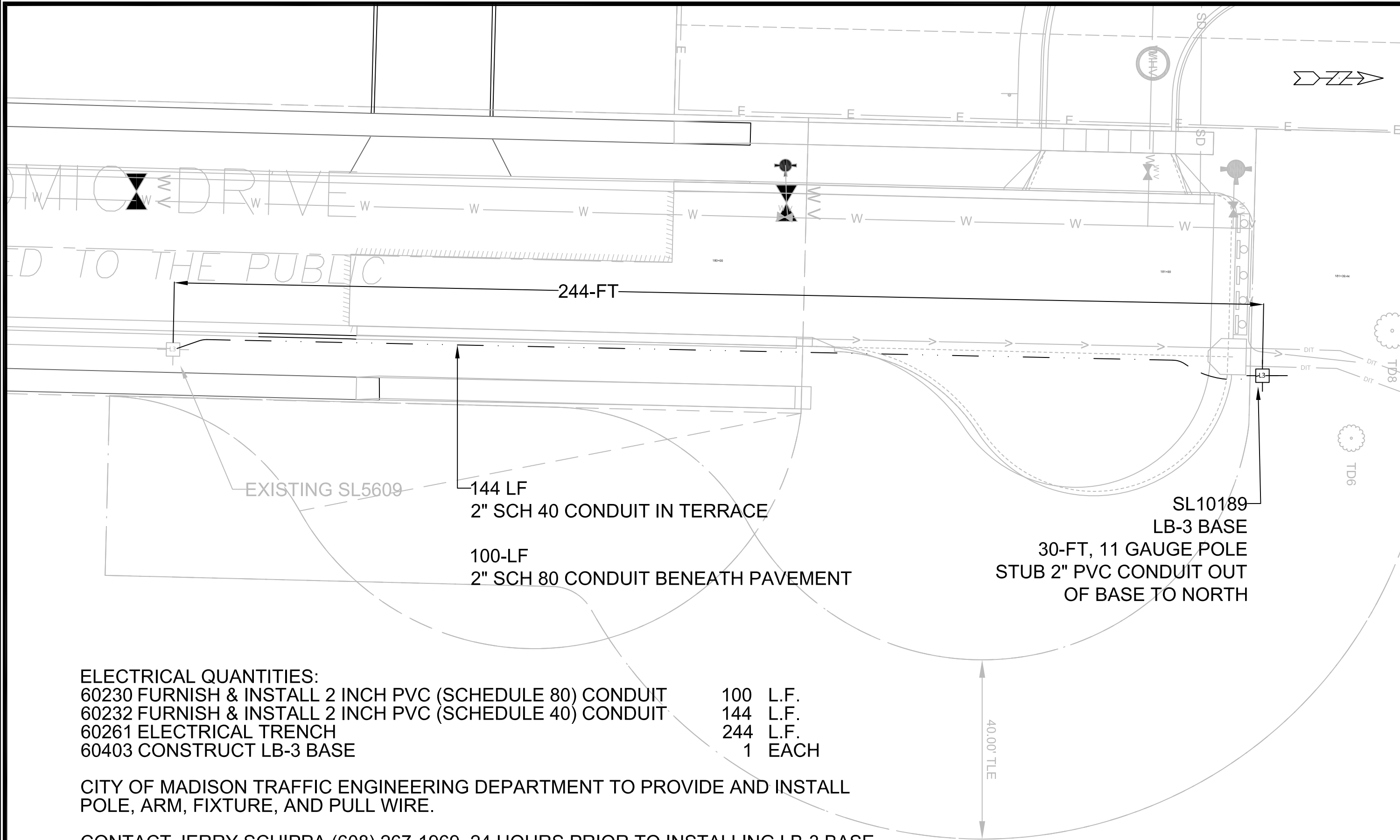
- \*\* SEE PLAN AND PROFILE FOR SLOPES, ELEVATIONS AND OFFSETS
- THE DEVELOPER SHALL BE RESPONSIBLE FOR SURFACE PAVING (CONTRACT NO. 9064).

DATE	BY
REVISION	
Designed By: LMC	Date: 4/19/2022 2:04 PM
13762	Scale: ---
D-4	

13762  
 MADISON, WI  
 9064  
 CONTRACT NO:

TYPICAL SECTION  
 502 GENOMIC DRIVE  
 M:\DESIGN\Projects\13762\CAD\Streets\13762EN-Details.dwg





**ELECTRICAL QUANTITIES:**

60230 FURNISH & INSTALL 2 INCH PVC (SCHEDULE 80) CONDUIT	100	L.F.
60232 FURNISH & INSTALL 2 INCH PVC (SCHEDULE 40) CONDUIT	144	L.F.
60261 ELECTRICAL TRENCH	244	L.F.
60403 CONSTRUCT LB-3 BASE	1	EACH

CITY OF MADISON TRAFFIC ENGINEERING DEPARTMENT TO PROVIDE AND INSTALL POLE, ARM, FIXTURE, AND PULL WIRE.

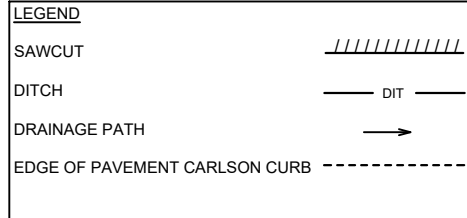
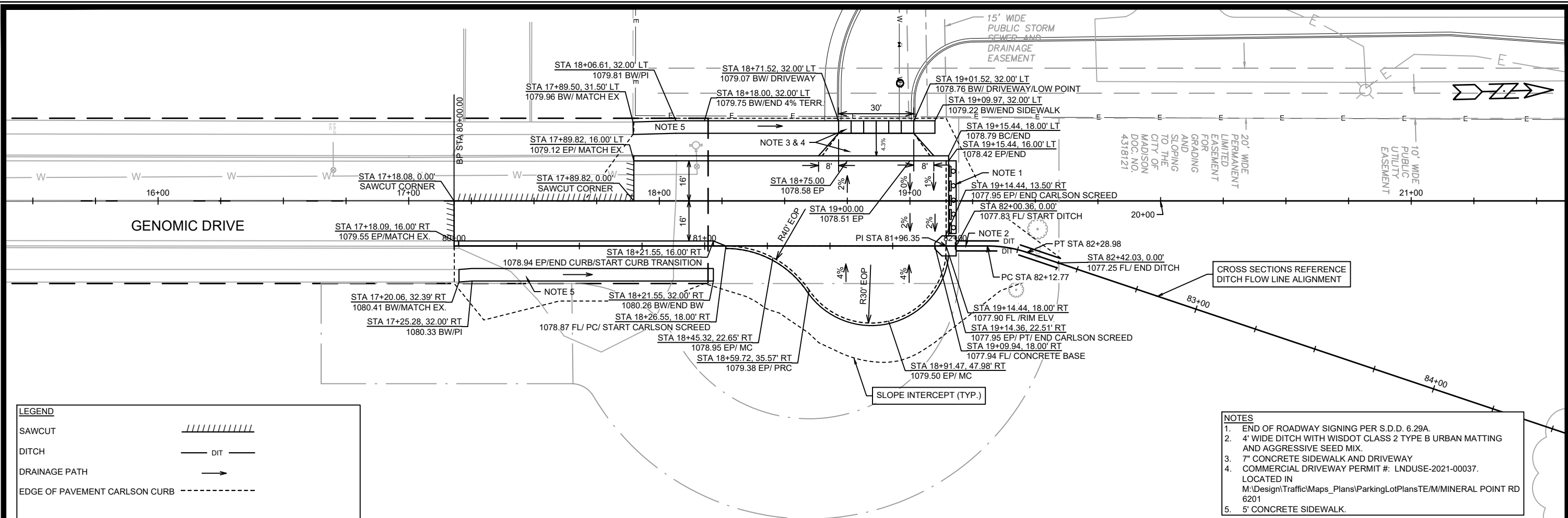
CONTACT JERRY SCHIPPA (608) 267-1969, 24 HOURS PRIOR TO INSTALLING LB-3 BASE. ALL WORK TO BE PERFORMED IN ACCORDANCE WITH "CITY OF MADISON STANDARD SPECIFICATIONS FOR PUBLIC WORKS CONSTRUCTION 2022 EDITION"

13762	MADISON, WI	CONTRACT NO: 9064	E-1
STREET LIGHTING		502 GENOMIC DRIVE	
MADISON, WI		CONTRACT NO: 9064	
M:\DESIGN\Projects\13762\CAD\Traffic\13762TE_Electrical.dwg			
13762	MARK	REVISION	DATE
###	###	###	###
###	###	###	###
###	###	###	###
Designed By: JLS Date: 3/7/2022			Scale: 1" = 20'

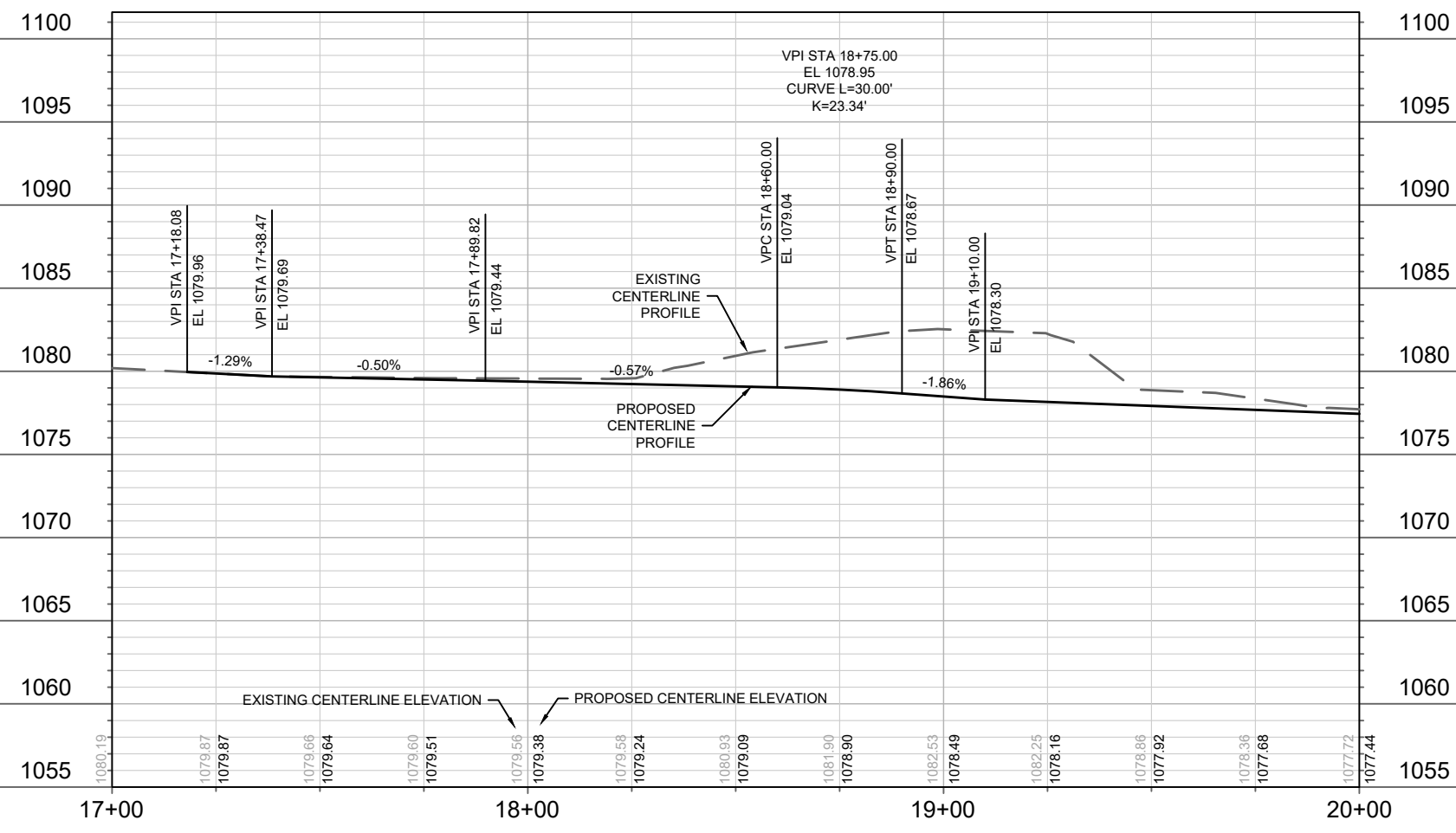


13762

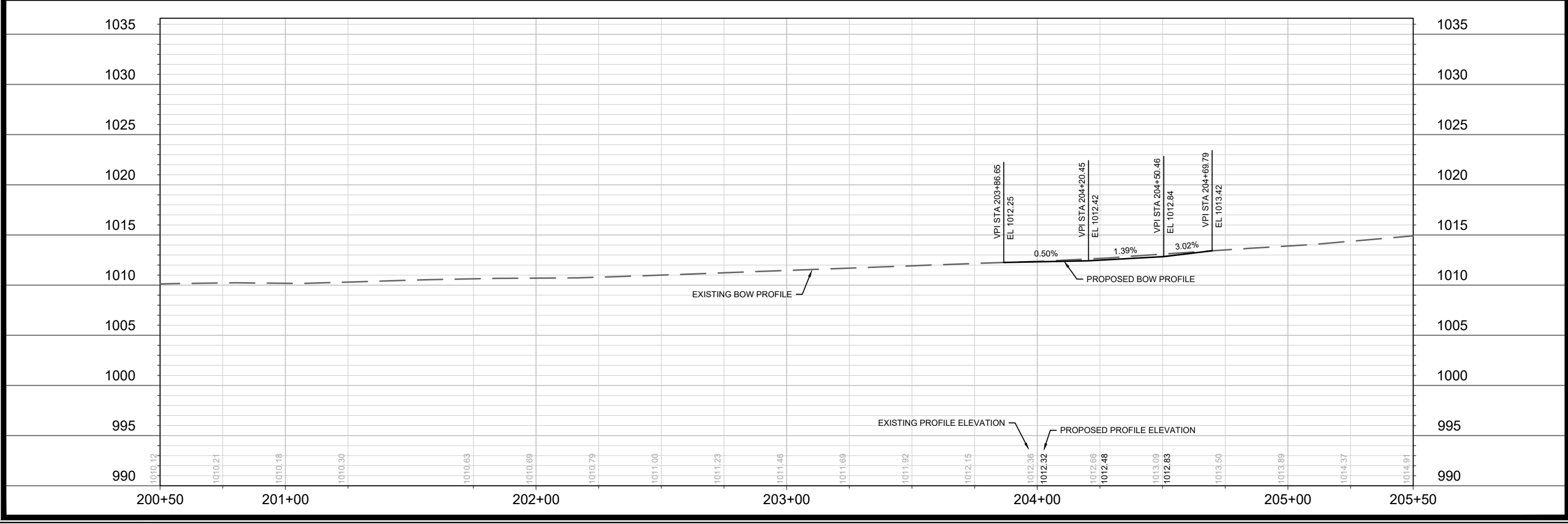
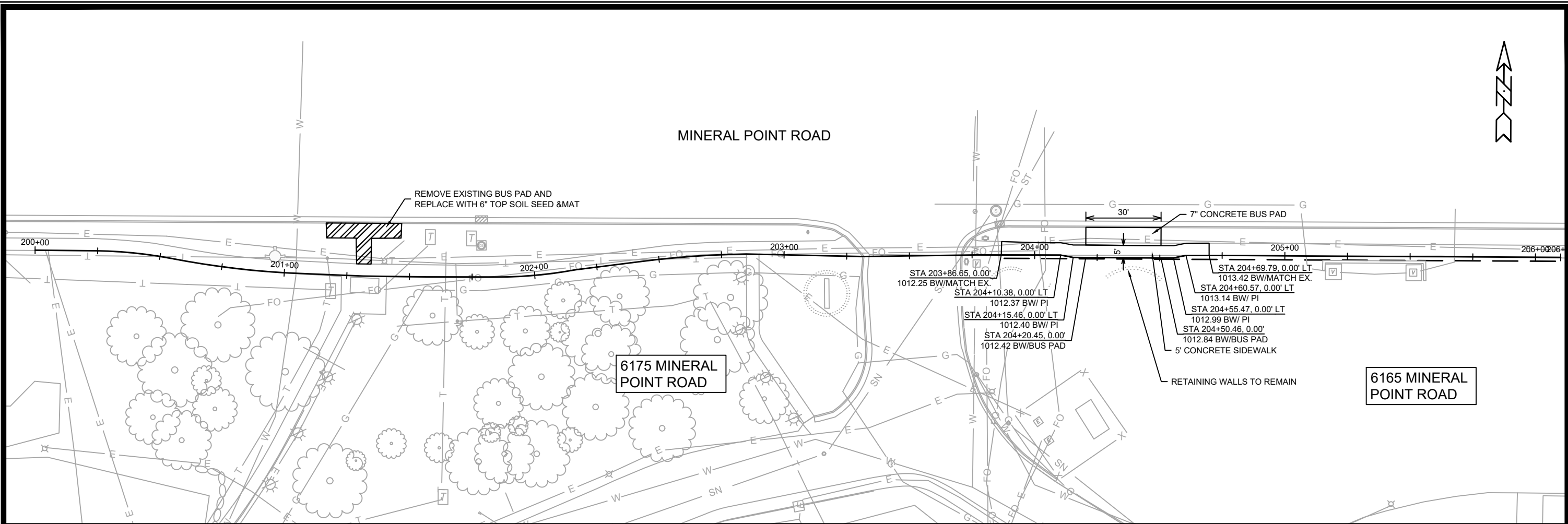
E-1



- NOTES**
- END OF ROADWAY SIGNING PER S.D.D. 6.29A.
  - 4' WIDE DITCH WITH WISDOT CLASS 2 TYPE B URBAN MATTING AND AGGRESSIVE SEED MIX.
  - 7' CONCRETE SIDEWALK AND DRIVEWAY
  - COMMERCIAL DRIVEWAY PERMIT #: LNDUSE-2021-00037. LOCATED IN M:\Design\Traffic\Maps\_Plans\ParkingLotPlans\TE\M\MINERAL POINT RD 6201
  - 5' CONCRETE SIDEWALK.



DATE	BY	P-1
REVISION		
MARK	13762	CONTRACT NO: 9064
DESIGNED BY: LMC	Date: 4/19/2022 10:26 AM	
<b>13762</b> <b>MADISON, WI</b> <b>502 GENOMIC DRIVE</b>		
<b>13762</b> <b>P-1</b>		



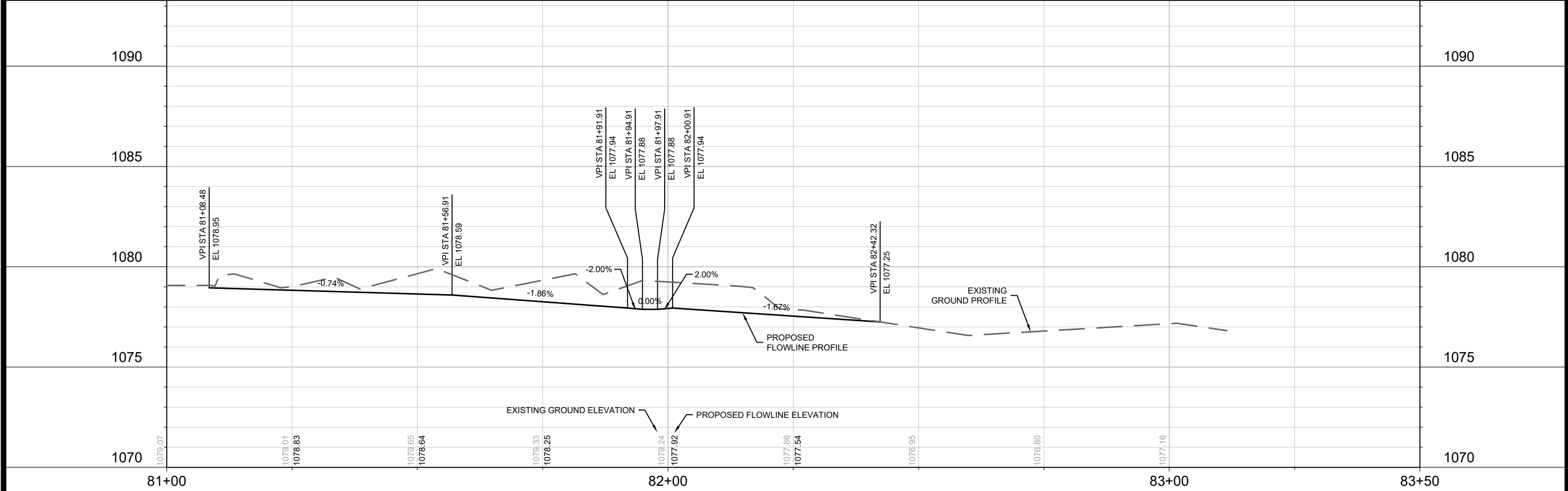
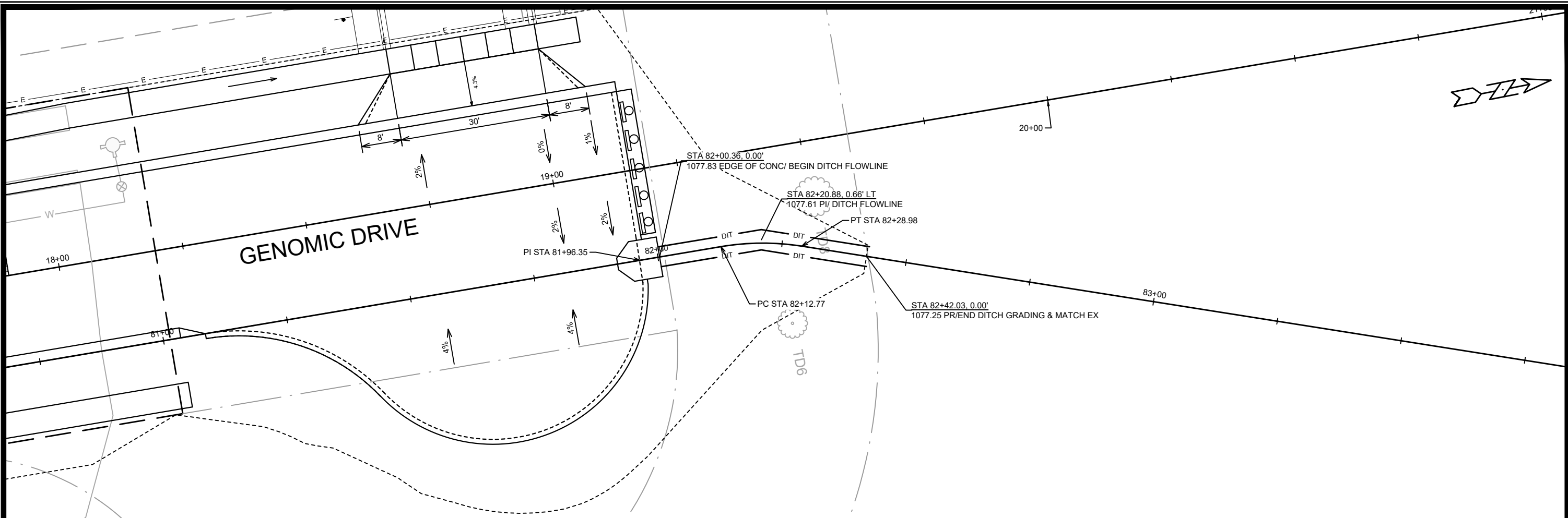
MARK	REVISION	DATE	BY
13762	Designed By: LMC	Date: 4/19/2022 9:43 AM	Scale: 1" = 40'
13762			P-2

13762  
MADISON, WI  
9064  
CONTRACT NO:

PLAN & PROFILE - MINERAL POINT ROAD SIDEWALK  
502 GENOMIC DRIVE  
M:\DESIGN\Projects\13762\CAD\Streets\13762EN-PnP.dwg

13762  
P-2





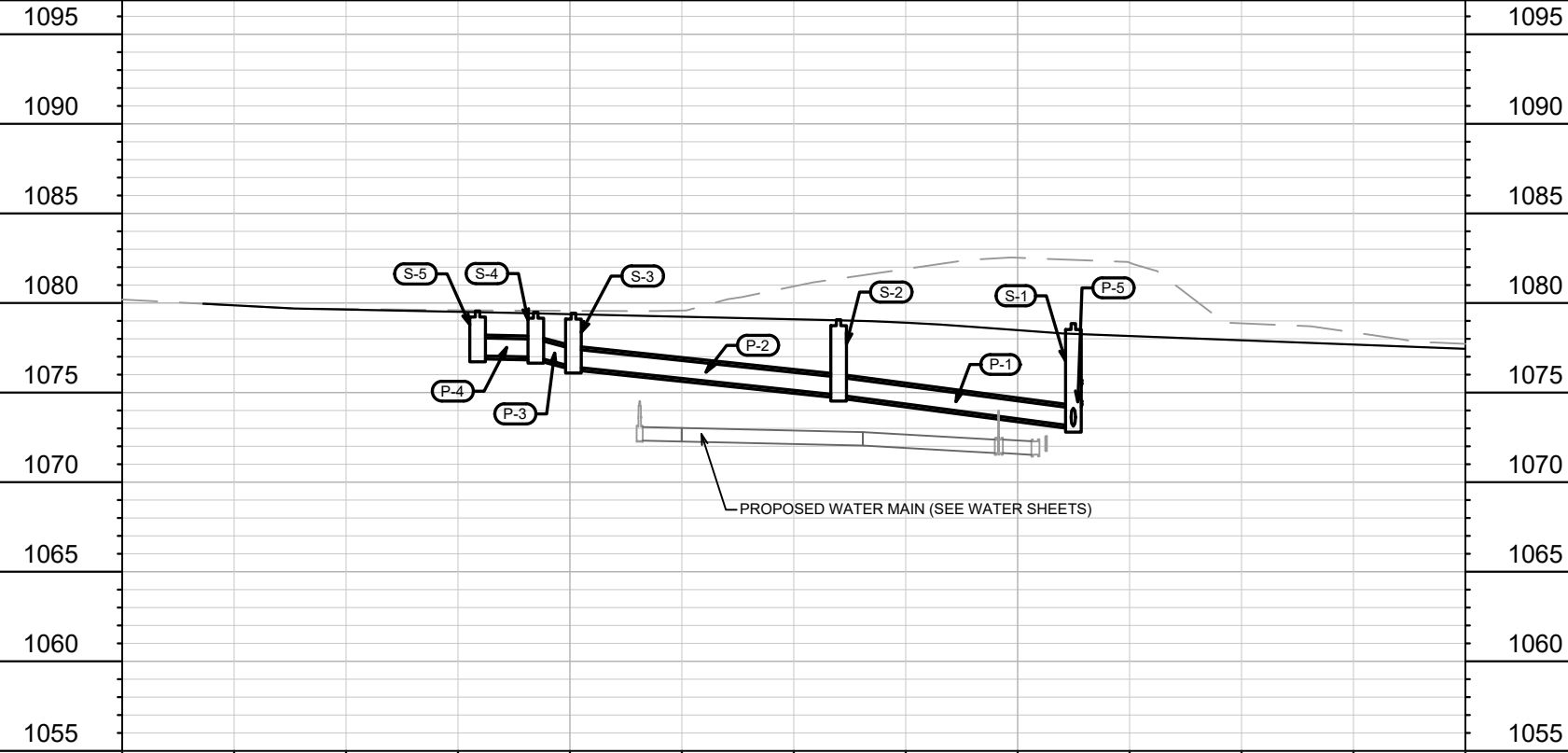
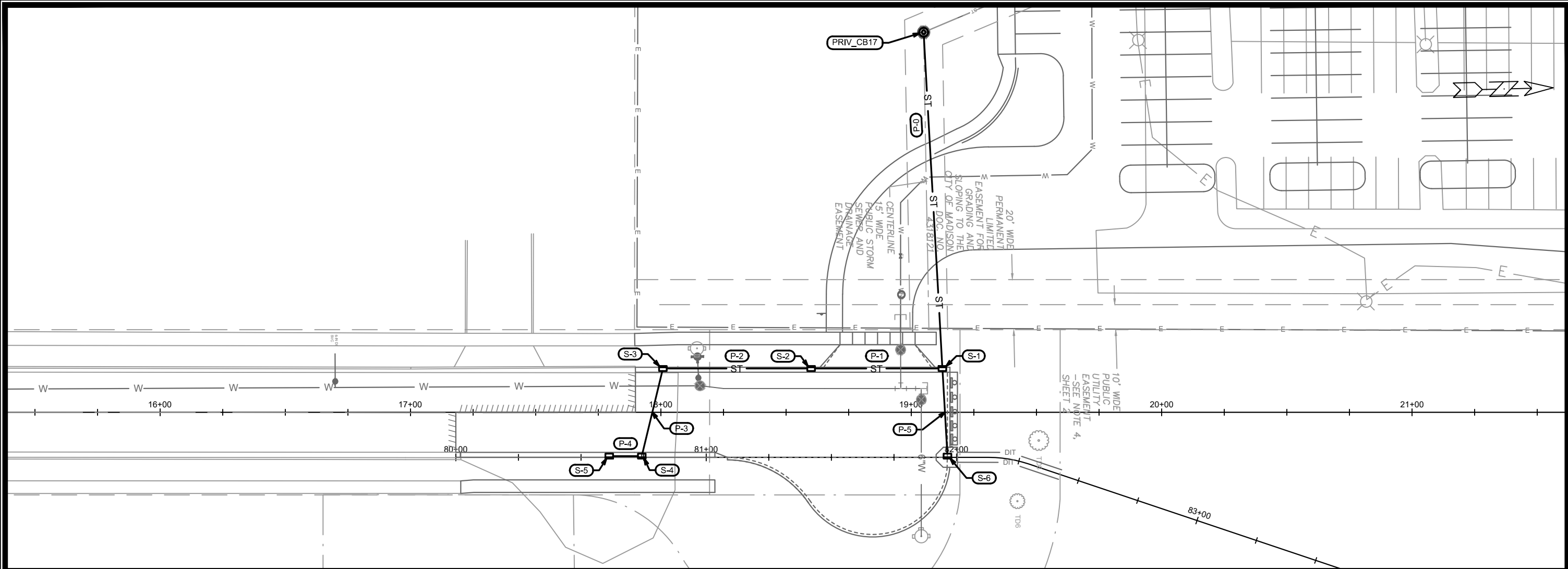
DATE	BY
REVISION	
Designed By: LMC	Date: 4/19/2022 9:44 AM
13762	P-3

13762  
MADISON, WI  
9064  
CONTRACT NO:

PLAN & PROFILE - PROPOSED DITCH  
502 GENOMIC DRIVE  
M:\DESIGN\Projects\13762\CAD\Streets\13762EN-PrP.dwg



13762  
P-3



MARK	REVISION	DATE	BY
13762		4/18/2022 4:09 PM	U-1

13762  
MADISON, WI  
9064  
CONTRACT NO:

UTILITY PLAN & PROFILE - GENOMIC DRIVE  
502 GENOMIC DRIVE  
M:\DESIGN\Projects\13762\CAD\Sewers\13762SWR-Sewer.dwg



13762  
U-1

# STORM SEWER SCHEDULE

502 GENOMIC DRIVE

SHEET NO.

PROJECT NO. 13762

U-2

STORM SEWER SCHEDULE

CITY OF MADISON

## PROPOSED STORM STRUCTURES

STRUC. NO.	STATION	LOCATION (OFFSET)	TYPE	TOP OF CASTING	E.I.	DEPTH	NOTES
S-1	19+12.43	LT-17.50	H INLET	1078.75	1073.13	5.62	W/ R-3067-7004V
S-2	18+60.00	LT-17.50	H INLET	1079.10	1074.86	4.24	W/ R-3067-7004V
S-3	18+00.79	LT-17.50	H INLET	1079.43	1076.43	3.00	W/ R-3067-7004V
S-4	17+92.36	RT-17.50	H INLET	1079.48	1076.98	2.50	FP; W/ R-3067-7004V
S-5	17+79.36	RT-17.50	H INLET	1079.55	1077.05	2.50	FP; W/ R-3067-7004V
S-6	19+14.44	RT-17.50	H INLET	1077.88	1074.52	3.36	W/ R-1878-B7G
PRIV_CB17	19+04.92	LT-151.79	ACCESS STRUCTURE	1074.92	1064.50		[1]

## PROPOSED STORM PIPES

PIPE NO.	FROM (DNSTM)	TO (UPSTM)	DISCH. E.I.	INLET E.I.	PLAN (PAY) LGTH (FT)	PIPE LGTH (FT)	SLOPE (%)	PIPE SIZE	TYPE	NOTES
P-1	S-1	S-2	1073.13	1074.86	52	49	3.53%	12"	RCP	
P-2	S-2	S-3	1074.86	1076.43	59	56	2.80%	12"	RCP	
P-3	S-3	S-4	1076.43	1076.98	35	33	1.67%	12"	RCP	
P-4	S-4	S-5	1076.98	1077.05	13	10	0.70%	12"	RCP	
P-5	S-1	S-6	1073.45	1074.52	35	33	3.24%	12"	RCP	
P-0	PRIV_CB17	S-1	1065.50	1073.13	135	132	5.79%	12"	RCP	[1]

### SPECIFIC NOTES:

[1] BY OTHERS. SEE DEVELOPER'S SHEETS (SHEET XXX) FOR DETAILS.

### STANDARD NOTES:

-PLAN LENGTH (PAY LENGTH) IS FROM CENTER OF STRUCTURE TO CENTER OF STRUCTURE. PIPE LENGTH IS ACTUAL LENGTH OF PIPE FROM STRUCTURE WALL TO STRUCTURE WALL. SLOPE CALCULATED USING PIPE LENGTH.

- ABBREVIATIONS: AE = APRON ENDWALL; RCP = REINFORCED CONCRETE PIPE; HERCP = HORIZONTAL ELLIPTICAL REINFORCED CONCRETE PIPE; DNA = DOES NOT APPLY; SAS = SEWER ACCESS STRUCTURE; LP = LOW POINT INLET STRUCTURE; FP = FIELD POURED STRUCTURE; TR = TOP OF CONCRETE ROOF; NCM = NO CROWN MATCH FOR PIPES; UD = UNDERDRAIN

- APPROXIMATE DISCHARGE E.I. GIVEN, ADJUST E.I. AND PIPE SLOPE IN THE FIELD.

- TOP OF CASTING GRADE GIVEN IS THE TOP OF CURB FOR INLET STRUCTURES AND THE FLOWLINE OF THE CLOSED CASTING FOR SAS'S.

- ALL REINFORCED CONCRETE PIPES TO BE CLASS III UNLESS OTHERWISE NOTED.

- SURVEYOR TO CONFIRM THAT ALL INLET STATION / OFFSETS LINE UP WITH PROPOSED CURB AND GUTTER.

-ALL FIELD POURED SAS STORM STRUCTURES SHALL BE CONSTRUCTED IN ACCORDANCE WITH STANDARD DETAIL DRAWING 5.7.3. ALL PRECAST SAS STORM STRUCTURES SHALL BE CONSTRUCTED IN ACCORDANCE WITH STANDARD DETAIL DRAWING 5.7.5.

- ALL STRUCTURES CALLED OUT AS FIELD POURED SHALL BE FIELD POURED. ALL OTHER STRUCTURES (NOT INDICATED AS FIELD POURED) SHALL BE SUBMITTED TO CITY ENGINEERING FOR APPROVAL IF PRECAST STRUCTURES ARE PREFERRED. CONTACT LAUREN STRIEGL OF CITY ENGINEERING AT (608) 266-4094 FOR PRECAST APPROVALS, FAX SHOP DRAWINGS TO (608)264-9275, OR EMAIL SHOP DRAWINGS TO LSTRIEGL@CITYOFMADISON.COM.

-ALL REBAR FOR FIELD POUR STRUCTURES SHALL BE EPOXY COATED. ANY EXPOSED STEEL SHALL BE TOUCHED UP OR RECOATED PRIOR TO USE.



milwaukee 333 East Chicago Street  
Milwaukee, Wisconsin 53202  
414.271.5350  
E madison 309 West Johnson Street, Suite 202  
Madison, Wisconsin 53703  
608.442.3363  
denver 1866 Wynkoop Street, Suite 300  
Denver, Colorado 80202  
303.556.4500

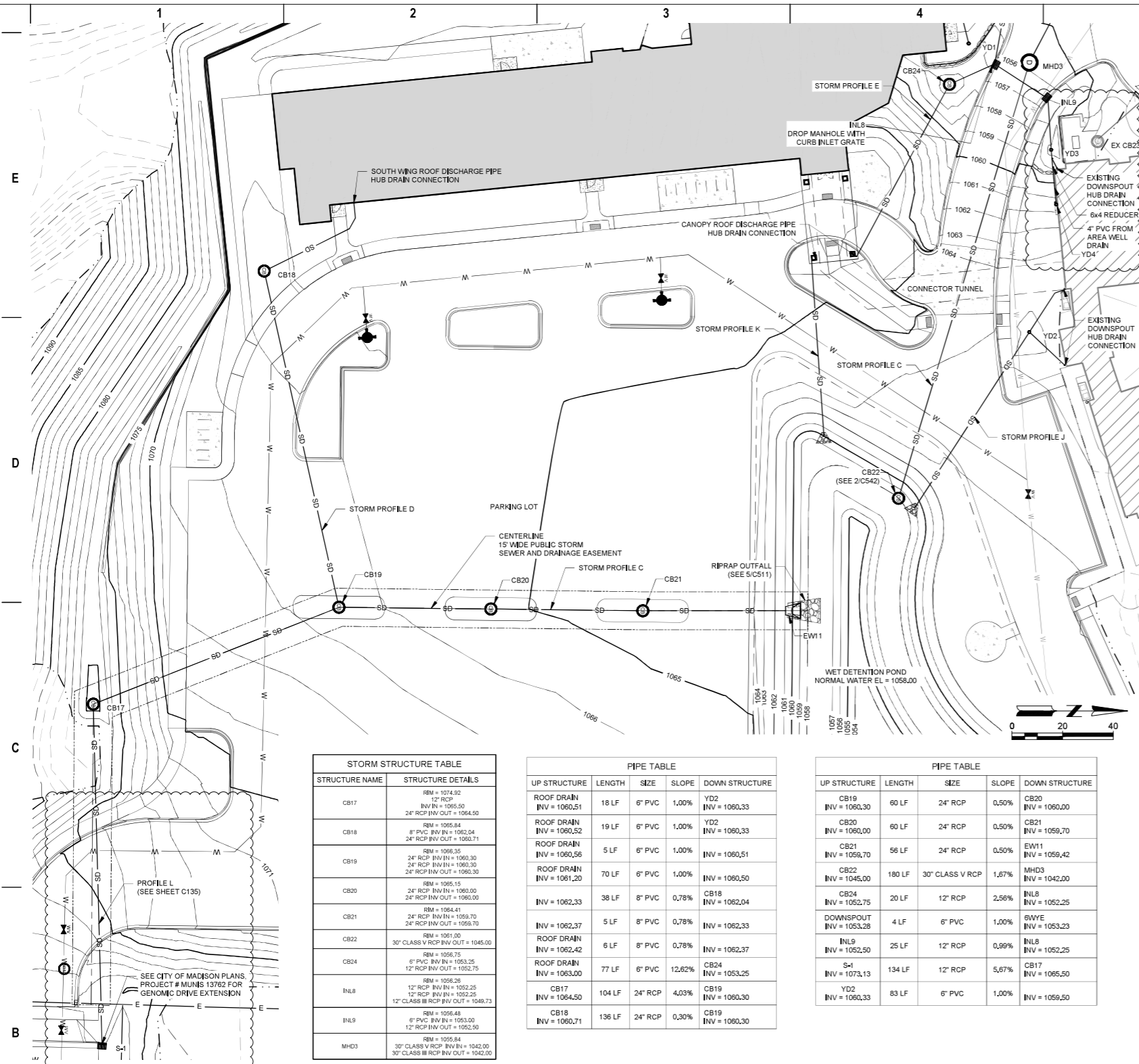
PROJECT INFORMATION

**OAKWOOD VILLAGE  
UNIVERSITY WOODS  
- SKILLED NURSING  
FACILITY**

**510 Genomic Drive,  
Madison, WI 53705**

ISSUANCE AND REVISIONS

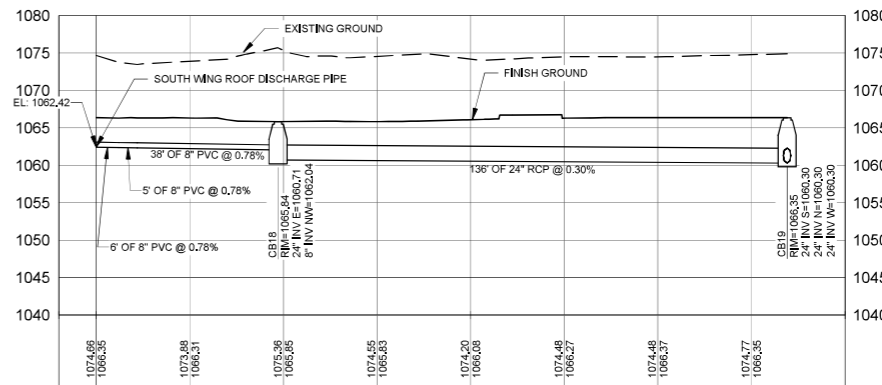
DATE	DESCRIPTION
08-27-2021	CONSTRUCTION DOCUMENTS
09-24-2021	ADDENDUM 01
10-22-2021	ADDENDUM 02
12-07-2021	CB #2
03-31-2022	CB-06



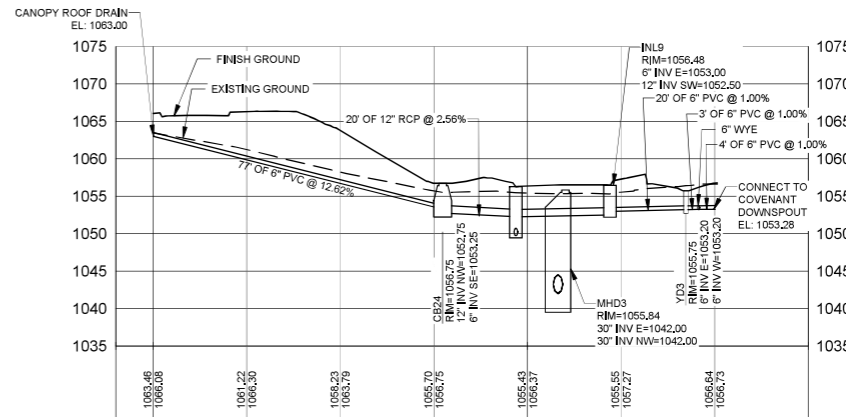
STRUCTURE NAME	STRUCTURE DETAILS
CB17	RM = 1074.92 12' RCP 24" RCP INV OUT = 1064.50
CB18	RM = 1065.84 8" PVC INV IN = 1062.04 24" RCP INV OUT = 1065.71
CB19	RM = 1069.35 24" RCP INV IN = 1060.30 24" RCP INV IN = 1060.30 24" RCP INV OUT = 1069.30
CB20	RM = 1065.15 24" RCP INV IN = 1060.00 24" RCP INV OUT = 1066.00
CB21	RM = 1064.41 24" RCP INV IN = 1059.70 24" RCP INV OUT = 1066.70
CB22	RM = 1061.00 30" CLASS V RCP INV OUT = 1045.00
CB24	RM = 1056.75 6" PVC INV IN = 1053.25 12" RCP INV OUT = 1052.75
INL8	RM = 1056.26 12" RCP INV IN = 1052.25 12" RCP INV IN = 1052.25 12" CLASS III RCP INV OUT = 1049.73
INL9	RM = 1056.48 6" PVC INV IN = 1053.00 12" RCP INV OUT = 1052.50
MHD3	RM = 1055.84 30" CLASS V RCP INV IN = 1042.00 30" CLASS III RCP INV OUT = 1042.00

UP STRUCTURE	LENGTH	SIZE	SLOPE	DOWN STRUCTURE
ROOF DRAIN	18 LF	6" PVC	1.00%	YD2 INV = 1060.33
ROOF DRAIN	19 LF	6" PVC	1.00%	YD2 INV = 1060.33
ROOF DRAIN	5 LF	6" PVC	1.00%	INV = 1060.51
ROOF DRAIN	70 LF	6" PVC	1.00%	INV = 1060.50
INV = 1062.33	38 LF	8" PVC	0.78%	CB18 INV = 1062.04
INV = 1062.37	5 LF	8" PVC	0.78%	INV = 1062.33
ROOF DRAIN	6 LF	8" PVC	0.78%	INV = 1062.37
ROOF DRAIN	77 LF	6" PVC	12.62%	CB24 INV = 1053.25
CB17	104 LF	24" RCP	4.03%	CB19 INV = 1060.30
CB18	136 LF	24" RCP	0.30%	CB19 INV = 1060.30

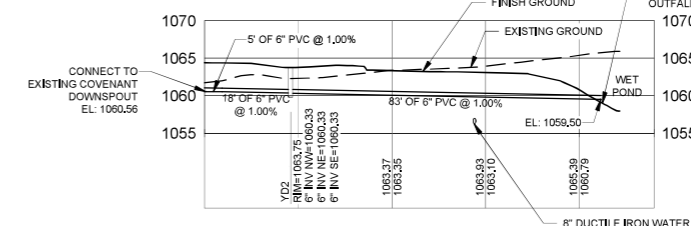
UP STRUCTURE	LENGTH	SIZE	SLOPE	DOWN STRUCTURE
CB19	60 LF	24" RCP	0.50%	CB20 INV = 1060.20
CB20	60 LF	24" RCP	0.50%	CB21 INV = 1059.70
CB21	56 LF	24" RCP	0.50%	EW11 INV = 1059.42
CB22	180 LF	30" CLASS V RCP	1.67%	MHD3 INV = 1042.00
CB24	20 LF	12" RCP	2.56%	INL9 INV = 1052.25
DOWNSPOUT	4 LF	6" PVC	1.00%	SWYE INV = 1053.23
INL9	25 LF	12" RCP	0.99%	INL8 INV = 1052.25
S-1	134 LF	12" RCP	5.67%	CB17 INV = 1065.50
YD2	83 LF	6" PVC	1.00%	INV = 1059.50



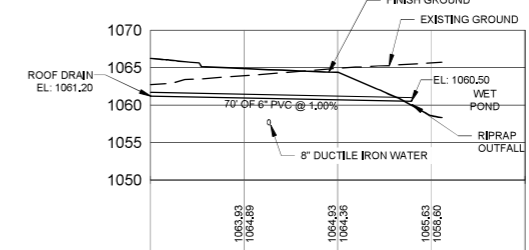
STORM PROFILE D



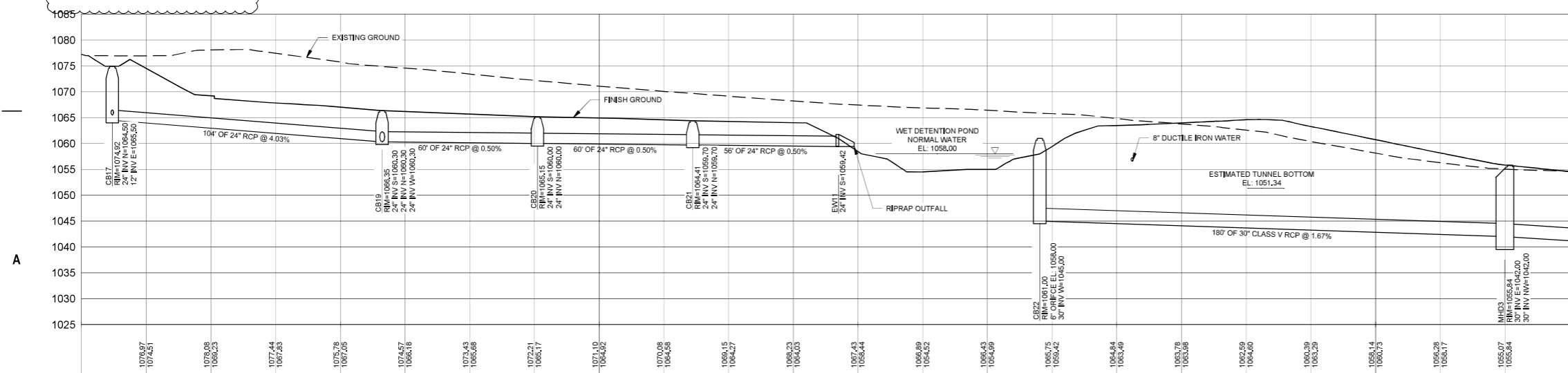
STORM PROFILE E



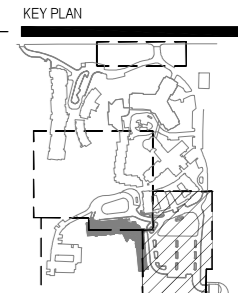
STORM PROFILE J



STORM PROFILE K



STORM PROFILE C



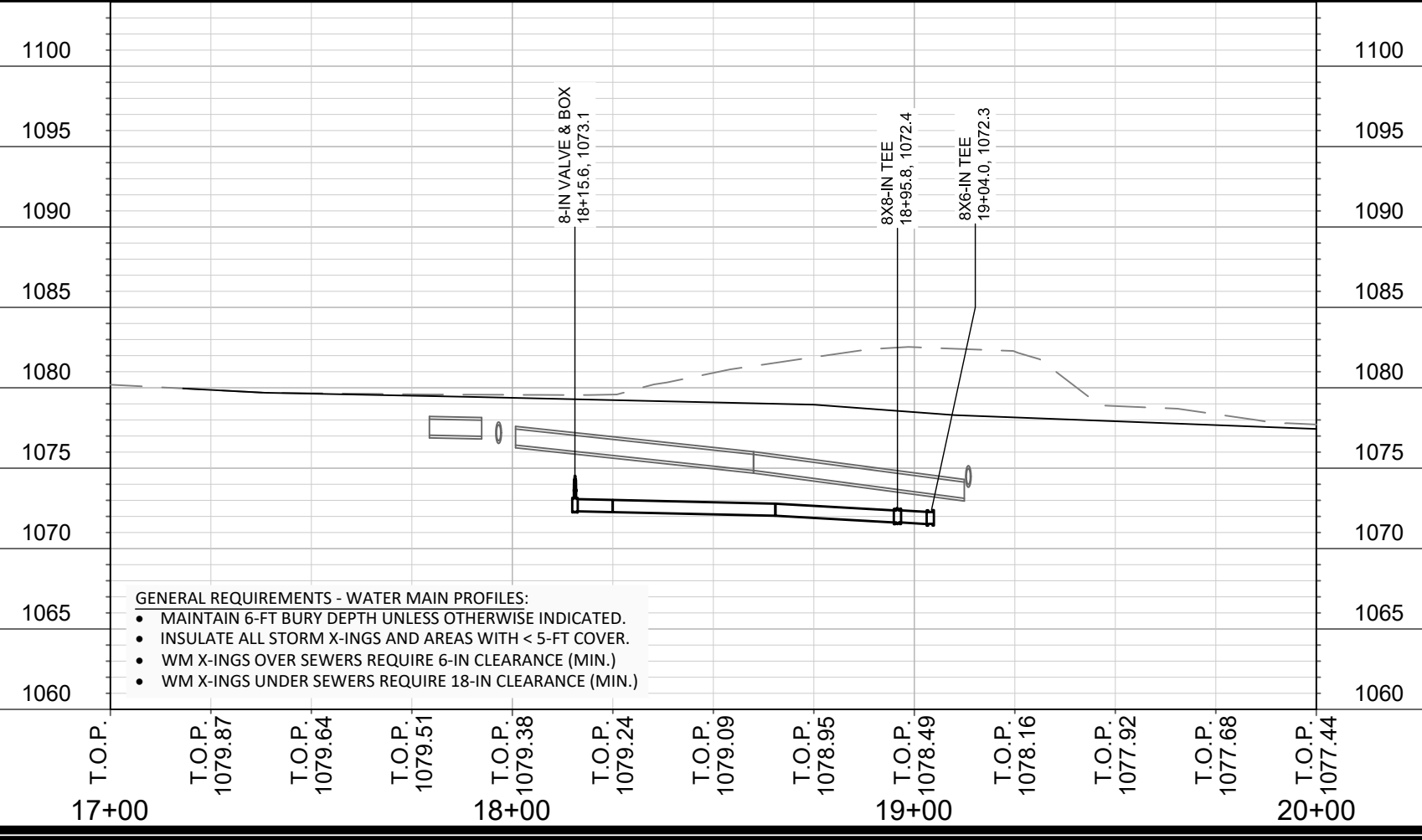
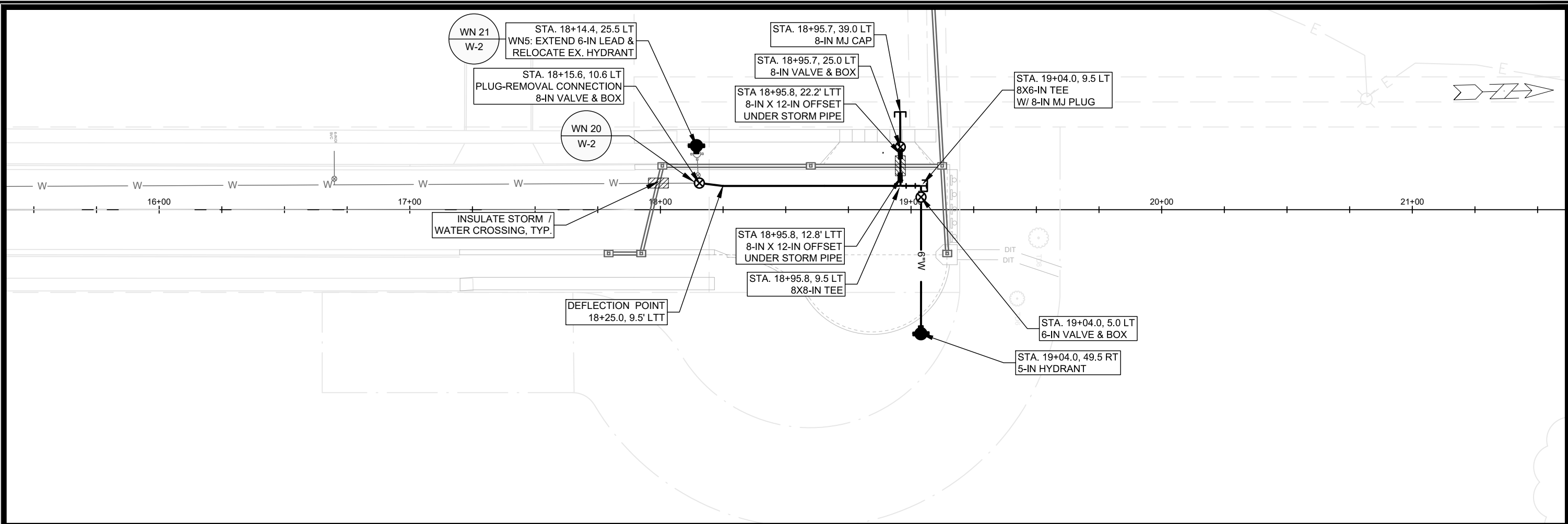
**Mead & Hunt**  
Mead and Hunt, Inc.  
SHEET INFORMATION

PROJECT MANAGER MO  
PROJECT NUMBER 120290-01



**STORM SEWER PLAN  
AND PROFILES**

**C136**



- GENERAL REQUIREMENTS - WATER MAIN PROFILES:**
- MAINTAIN 6-FT BURY DEPTH UNLESS OTHERWISE INDICATED.
  - INSULATE ALL STORM X-INGS AND AREAS WITH < 5-FT COVER.
  - WM X-INGS OVER SEWERS REQUIRE 6-IN CLEARANCE (MIN.)
  - WM X-INGS UNDER SEWERS REQUIRE 18-IN CLEARANCE (MIN.)

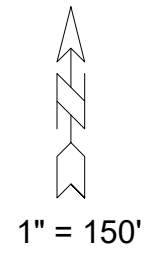
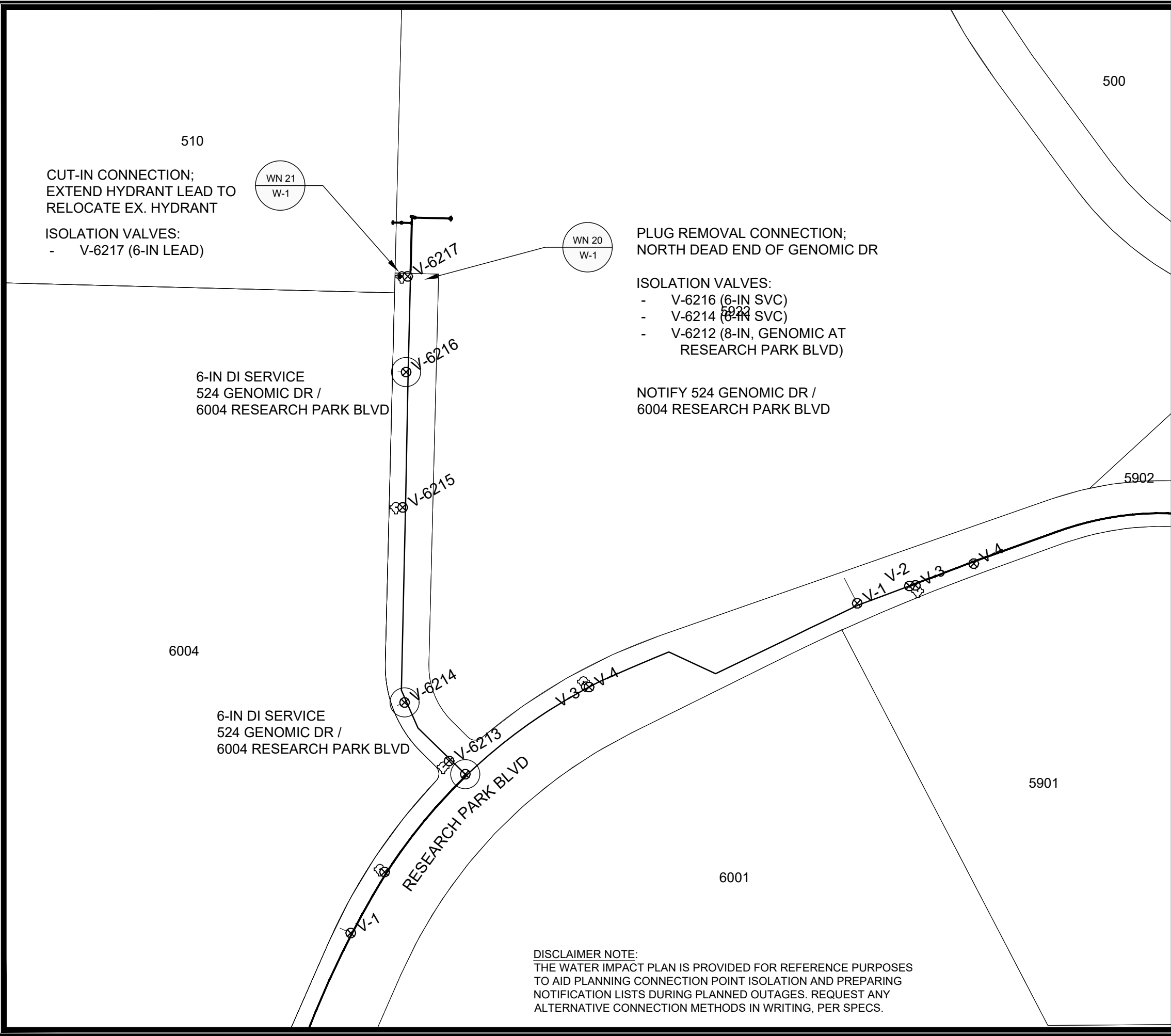
SCALE: 1" = 40'

DESIGNED BY: KBM  
MADISON WATER UTILITY  
119 E OLIN AVE, MADISON, WI 53713  
PRINTING DATE: 3/28/22

502 GENOMIC DRIVE  
- GENOMIC DRIVE WATER PLAN AND PROFILE  
**CITY OF MADISON, WISCONSIN**



13762  
W-1



CUT-IN CONNECTION;  
EXTEND HYDRANT LEAD TO  
RELOCATE EX. HYDRANT

ISOLATION VALVES:  
- V-6217 (6-IN LEAD)

6-IN DI SERVICE  
524 GENOMIC DR /  
6004 RESEARCH PARK BLVD

6004

6-IN DI SERVICE  
524 GENOMIC DR /  
6004 RESEARCH PARK BLVD

PLUG REMOVAL CONNECTION;  
NORTH DEAD END OF GENOMIC DR

ISOLATION VALVES:  
- V-6216 (6-IN SVC)  
- V-6214 (6-IN SVC)  
- V-6212 (8-IN, GENOMIC AT  
RESEARCH PARK BLVD)

NOTIFY 524 GENOMIC DR /  
6004 RESEARCH PARK BLVD

DISCLAIMER NOTE:  
THE WATER IMPACT PLAN IS PROVIDED FOR REFERENCE PURPOSES  
TO AID PLANNING CONNECTION POINT ISOLATION AND PREPARING  
NOTIFICATION LISTS DURING PLANNED OUTAGES. REQUEST ANY  
ALTERNATIVE CONNECTION METHODS IN WRITING, PER SPECS.

SCALE: 1" = 150'  
DESIGNED BY: KBM  
MADISON WATER UTILITY  
119 E OLIN AVE, MADISON, WI 53713  
PRINTING DATE: 3/28/22

CONTRACT NO: 9046

502 GENOMIC DRIVE  
WATER IMPACT PLAN  
CITY OF MADISON, WISCONSIN



13762  
W-2

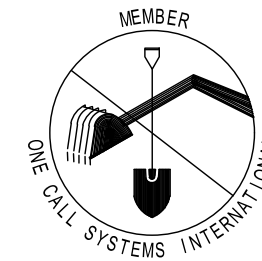
**CONSTRUCTION NOTES:**

- |   |   |
|---|---|
| <ol style="list-style-type: none"> <li>CONSTRUCT NEW WATER MAIN 6.0' BELOW FINISHED GRADE, UNLESS OTHERWISE NOTED. INSULATE MAIN WITH POLYSTYRENE BOARD AT UTILITY CROSSINGS OR OTHER AREAS IDENTIFIED BY ENGINEER AS HAVING INADEQUATE COVER.</li> <li>VERIFY SIZE OF EXISTING WATER SERVICES AND RECONNECT SERVICES AS INDICATED.</li> <li>MINIMIZE DISRUPTION OF SERVICE TO CUSTOMERS. NOTIFY PER CONTRACT REQUIREMENTS OF ANY PLANNED WATER OUTAGE.</li> <li>THE EXISTING UTILITIES SHOWN ON THIS REPRESENT THE BEST INFORMATION AVAILABLE TO THE WATER UTILITY AT THE TIME OF PLAN PREPARATION. CONTRACTOR IS RESPONSIBLE FOR HAVING EACH UTILITY LOCATED PRIOR TO COMMENCING WORK.</li> </ol> | <p>WN1 REPLACE THE EXISTING LEAD SERVICE WITH A NEW COPPER SERVICE.</p> <p>WN-2 EXTEND AND RECONNECT THE EXISTING COPPER SERVICE TO THE NEW WATER MAIN.</p> <p>WN-3 EXISTING SERVICE TO BE ABANDONED WHEN THE WATER MAIN IS CUT OFF.</p> <p>WN-4 DISCONNECT FROM THE OLD WATER MAIN AND RECONNECT THE EXISTING COPPER WATER SERVICE LATERAL TO THE NEW WATER MAIN.</p> <p>WN-5 RELOCATE THE EXISTING FIRE HYDRANT.</p> <p>WN-6 ABANDON WATER VALVE ACCESS STRUCTURE.</p> <p>WN-7 FURNISH AND INSTALL THE NEW TOP SECTION FOR THE WATER ACCESS STRUCTURE.</p> <p>WN-8 ABANDON THE VALVE BOX.</p> <p>WN-9 FURNISH THE DITCH, COMPACTION, AND ALL MATERIALS AND LABOR FOR THE INSTALLATION OF NEW SERVICE LATERAL.</p> <p>WN-10 REMOVE AND SALVAGE EXISTING HYDRANT</p> <p>WN-11 REPLACE THE EXISTING COPPER SERVICE WITH A COPPER SERVICE</p> <p>WN-20+ SEE WATER IMPACT PLAN FOR CONNECTION POINT ISOLATION AND WATER SHUT-OFF NOTIFICATION INFORMATION.</p> |
|---|---|

TO OBTAIN LOCATION OF PARTICIPANTS' UNDERGROUND FACILITIES BEFORE YOU DIG IN WISCONSIN

CALL DIGGERS HOTLINE  
TOLL FREE  
811 OR 1-800-242-8511  
FAX-A-LOCATE 1-800-338-3860  
TDD (FOR HEARING IMPAIRED) 1-800-542-2289

WIS. STATUTE 182.0175 (1974)  
REQUIRES MIN. OF 3 WORK DAYS  
NOTICE BEFORE YOU EXCAVATE.



**DISCLAIMER NOTE:** UTILITY LOCATIONS SHOWN ARE APPROXIMATE ONLY. IT SHALL BE THE CONTRACTOR'S RESPONSIBILITY TO DETERMINE THE EXACT HORIZONTAL AND VERTICAL LOCATION OF ALL EXISTING UNDERGROUND AND OVERHEAD UTILITIES PRIOR TO COMMENCING WORK.

SCALE: N/A  
DESIGNED BY: KBM  
MADISON WATER UTILITY  
119 E OLIN AVE, MADISON, WI 53713  
PRINTING DATE:

CONTRACT NO: 9046

**\*ESTIMATE OF MATERIALS SUPPLIED BY CONTRACTOR:**

PAY ITEM ID	DESCRIPTION	QUANTITY	UNIT
70002	FURNISH AND INSTALL 6 INCH PIPE & FITTINGS	60	LNFT
70003	FURNISH AND INSTALL 8 INCH PIPE & FITTINGS	120	LNFT
70031	FURNISH AND INSTALL 6 INCH WATER VALVE	1	EACH
70032	FURNISH AND INSTALL 8 INCH WATER VALVE	2	EACH
70040	FURNISH INSTALL AND SALVAGE HYDRANT	1	EACH
70101	FURNISH AND INSTALL STYROFOAM 8 IN X 12 IN OFFSET	2	EACH
71002	8 IN MJ CAP	2	EACH
71210	8X6 IN TEE	1	EACH
71211	8X8 IN TEE	1	EACH

**\*ESTIMATE OF MATERIALS SUPPLIED BY WATER UTILITY:**

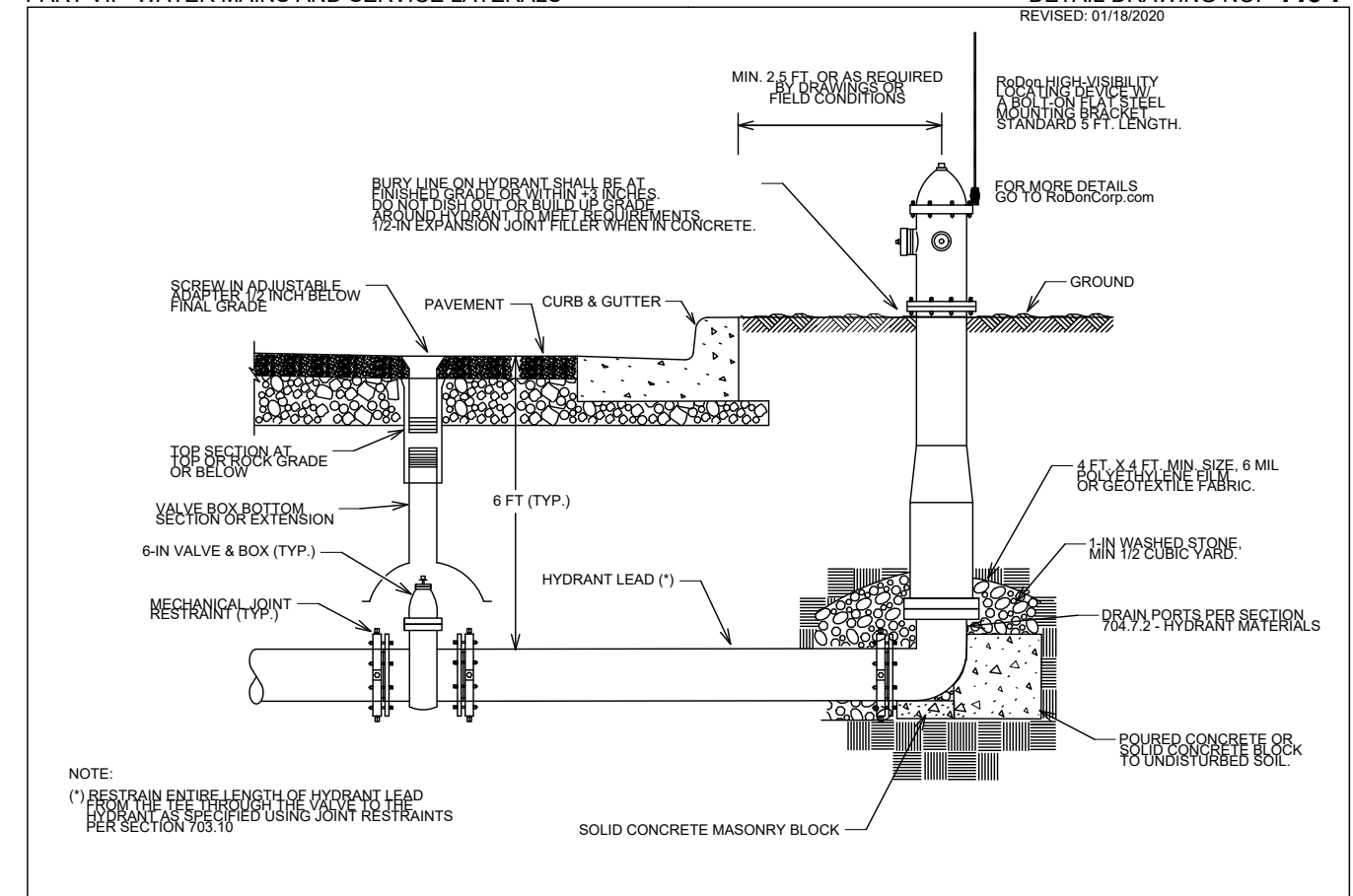
N/A

**\*ESTIMATE OF MATERIALS SALVAGED:**

N/A

**\* ESTIMATE OF MATERIALS IS FOR INFORMATION ONLY. ENGINEER DOES NOT GUARANTEE ACCURACY OF MATERIAL TAKE OFF.**

**PART VII - WATER MAINS AND SERVICE LATERALS** **DETAIL DRAWING NO. 7.04**

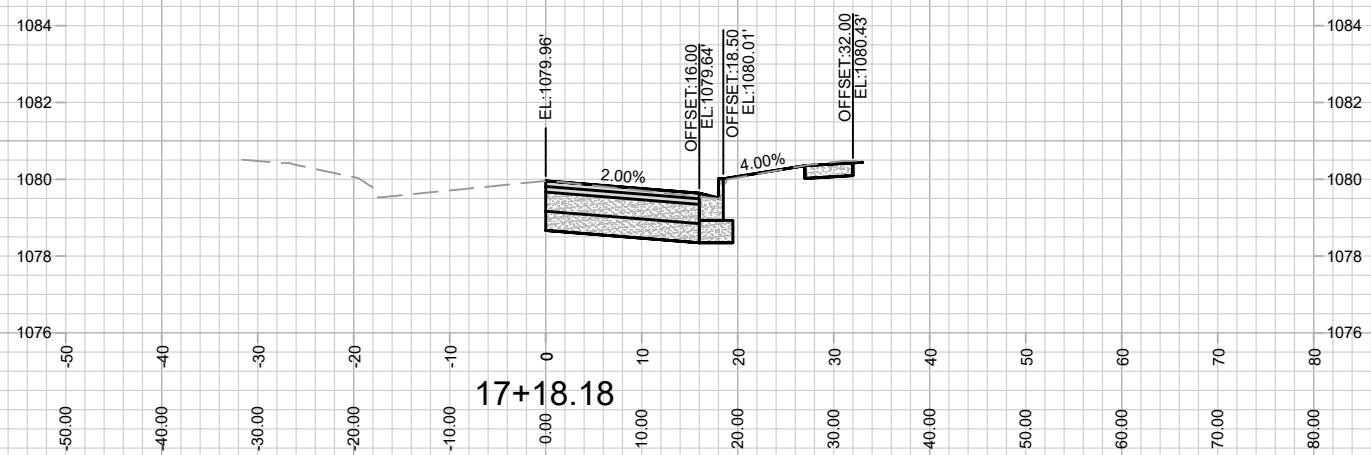
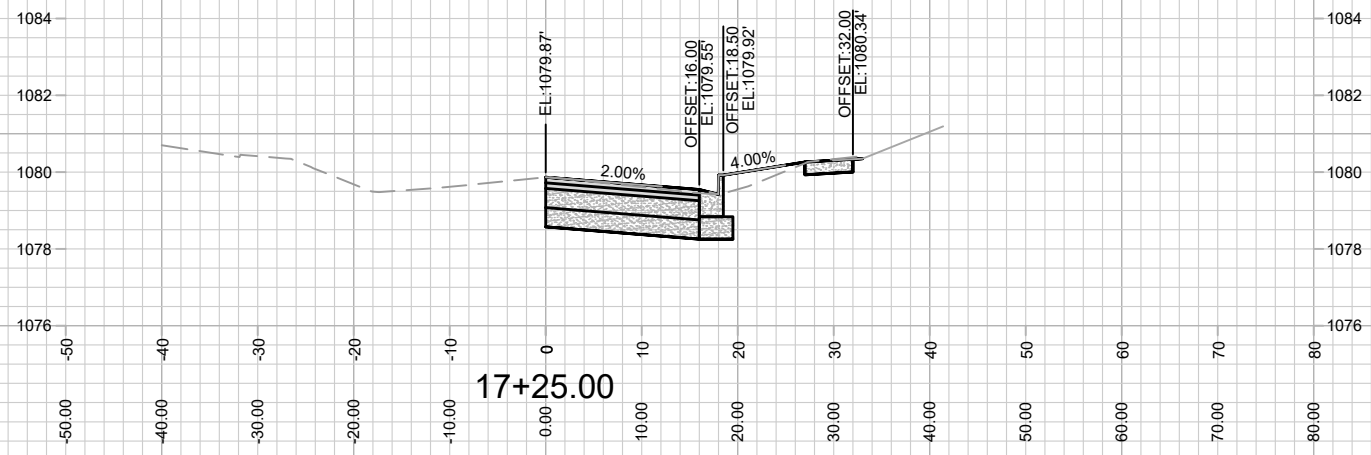


CITY OF MADISON WATER UTILITY NOT TO SCALE TYPICAL HYDRANT INSTALLATION

502 GENOMIC DRIVE  
WATER ESTIMATE OF MATERIALS  
CITY OF MADISON, WISCONSIN



13762  
W-3



MARK	REVISION	DATE	BY
13762	4/19/2022 10:19 AM	#####	X-1

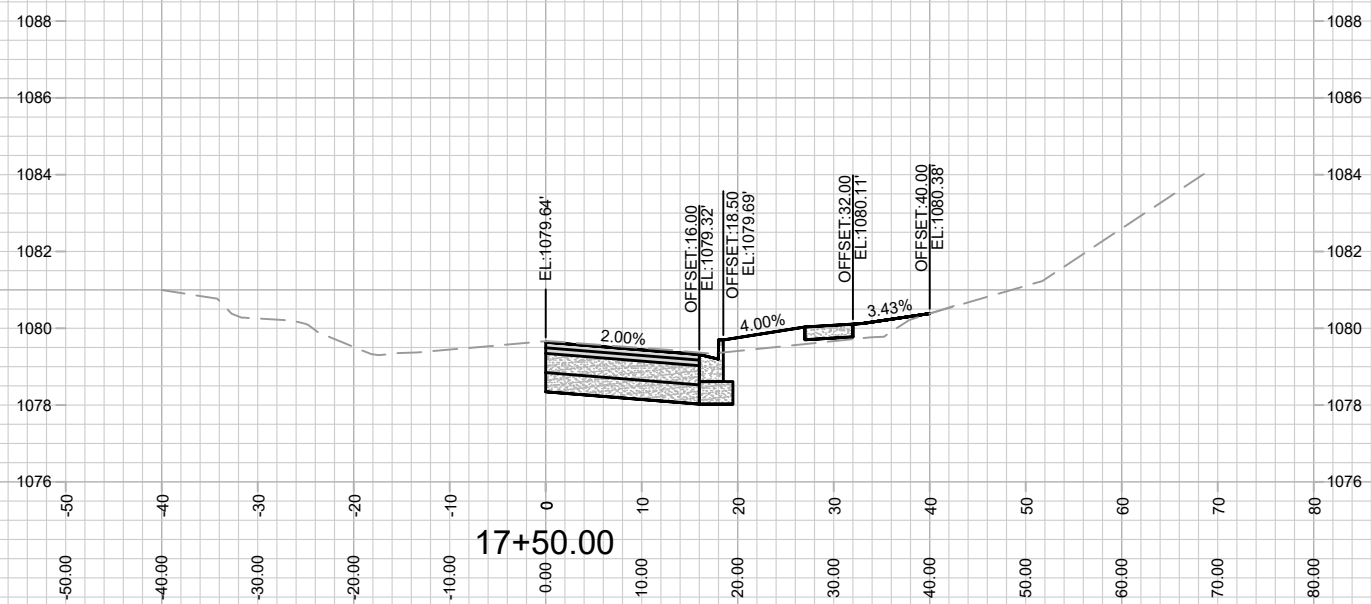
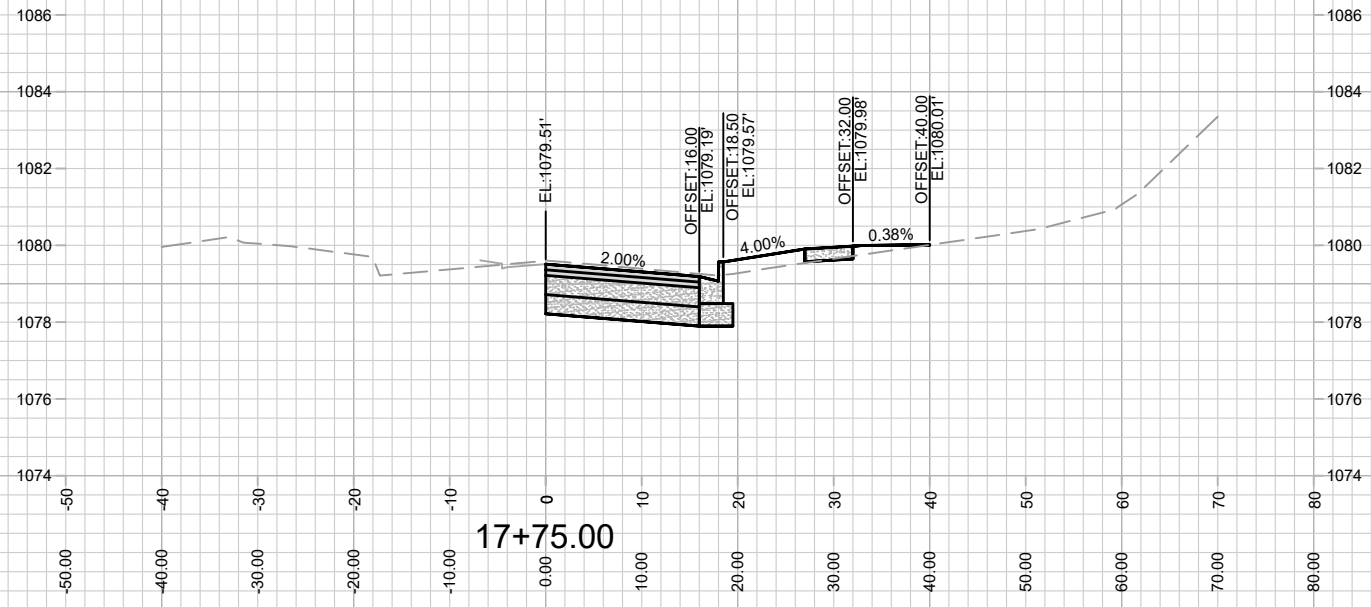
13762  
 MADISON, WI  
 9064  
 CONTRACT NO:

CROSS SECTION - GENOMIC DRIVE  
 502 GENOMIC DRIVE  
 M:\DESIGN\Projects\13762\CAD\Streets\13762EN-Corridor.dwg



13762  
 X-1





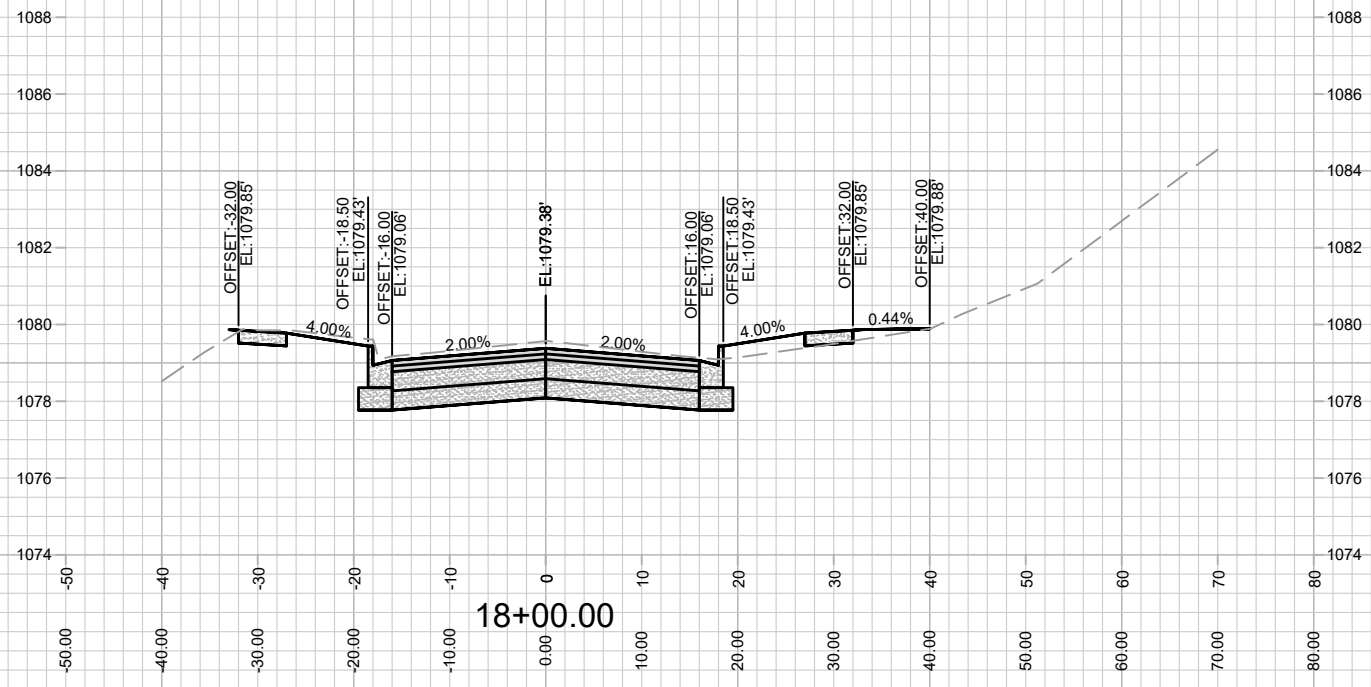
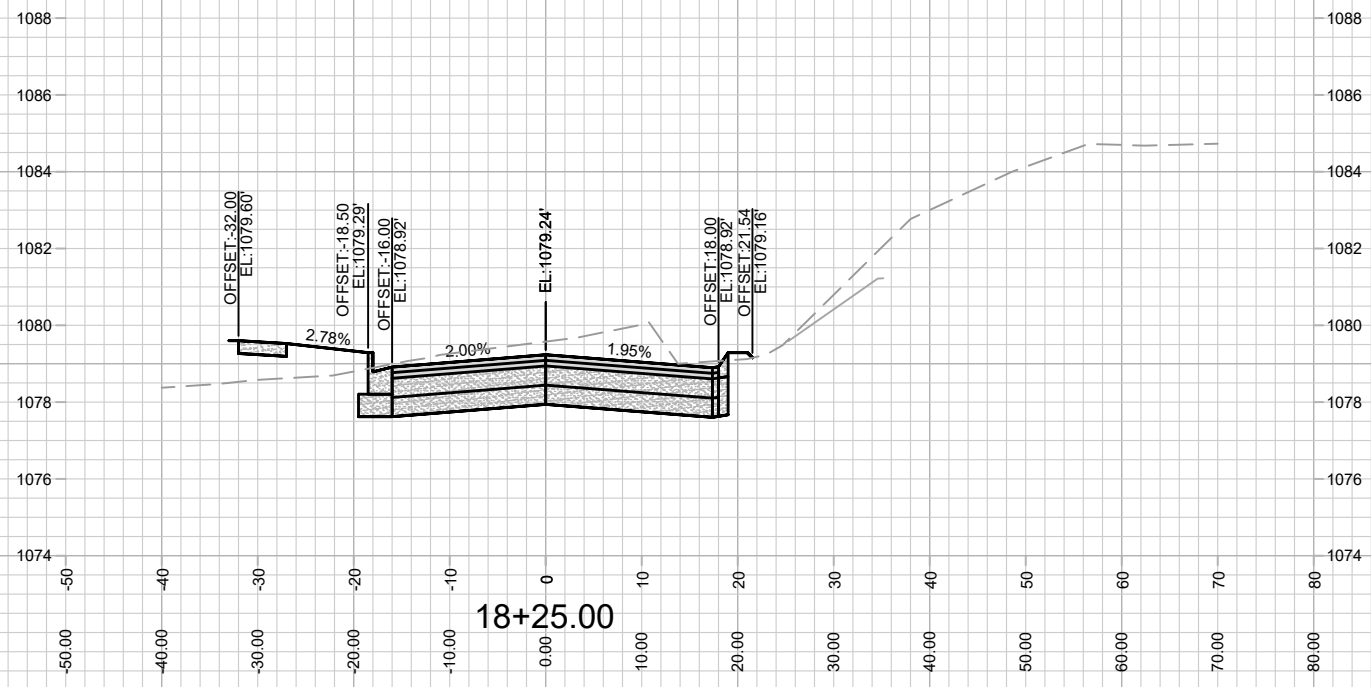
MARK	REVISION	DATE	BY

Designed By: LMC  
 Date: 4/19/2022 10:19 AM  
 Scale: #####  
 13762  
 X-2

13762  
 MADISON, WI  
 9064  
 CONTRACT NO:

CROSS SECTION - GENOMIC DRIVE  
 502 GENOMIC DRIVE  
 M:\DESIGN\Projects\13762\CAD\Streets\13762EN-Corridor.dwg

13762  
 X-2



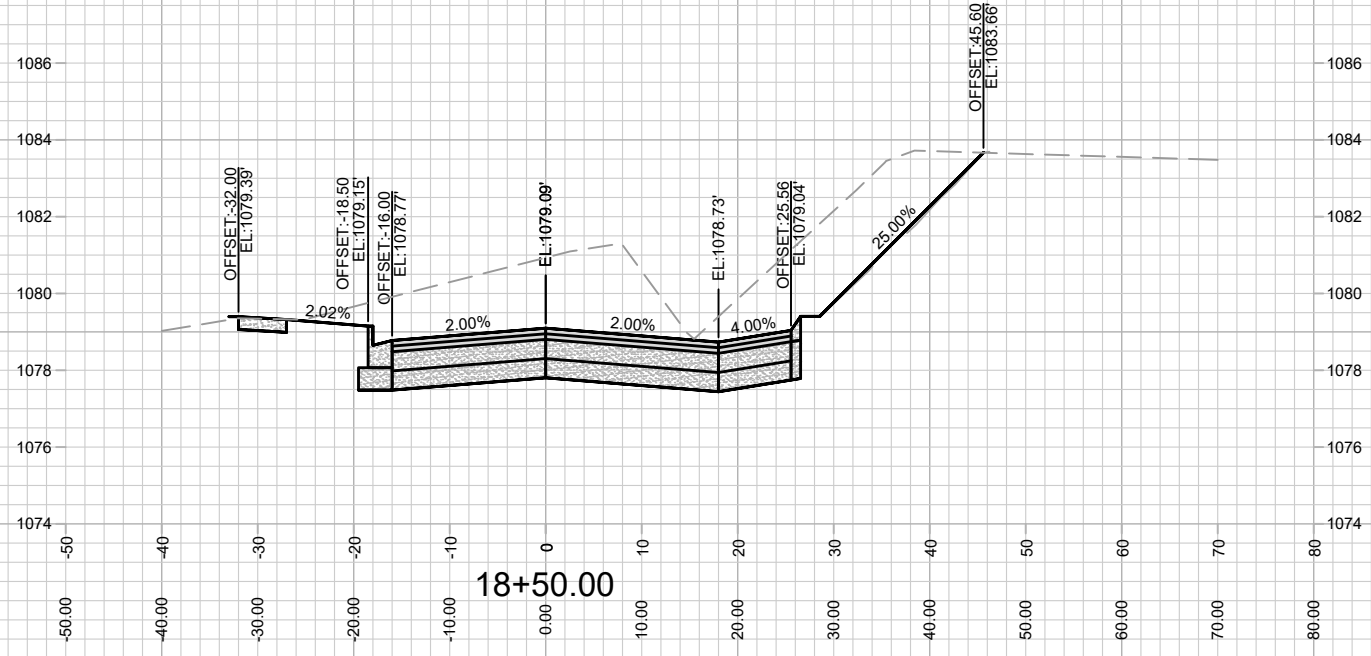
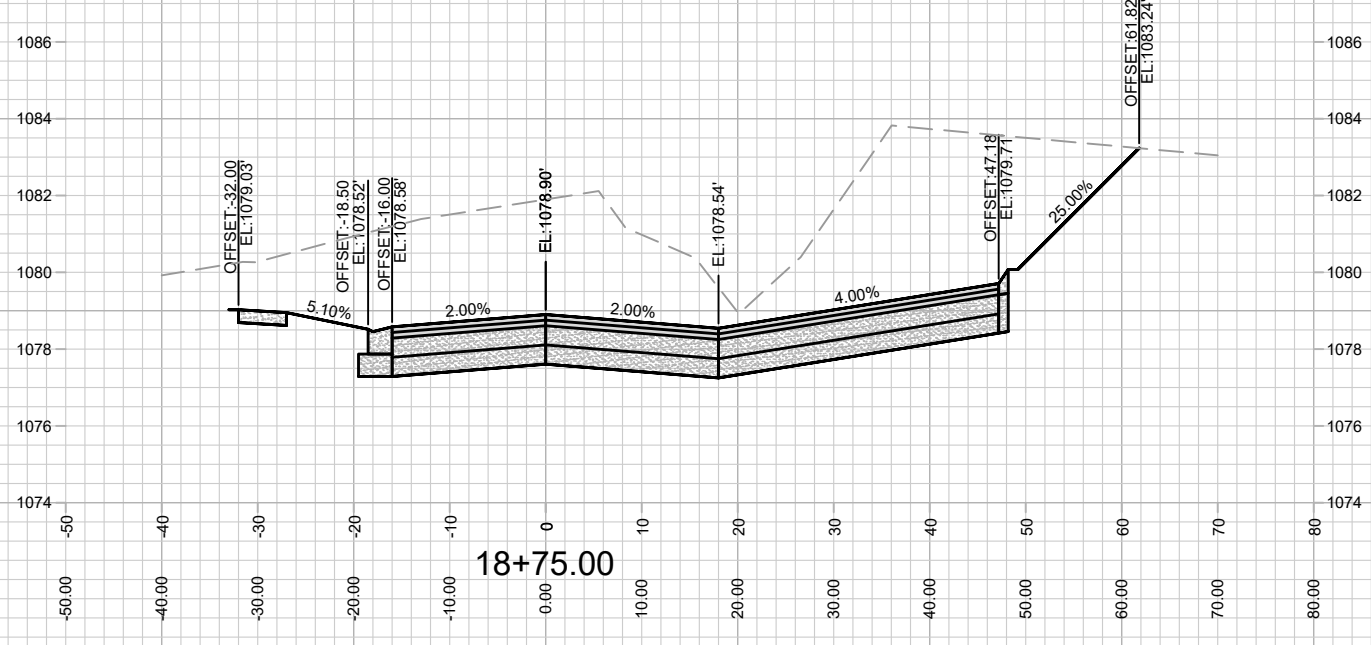
MARK	REVISION	DATE	BY
13762	4/19/2022	10:19 AM	X-3

13762  
 MADISON, WI  
 9064  
 CONTRACT NO:

CROSS SECTION - GENOMIC DRIVE  
 502 GENOMIC DRIVE  
 M:\DESIGN\Projects\13762\CAD\Streets\13762EN-Corridor.dwg



13762  
 X-3



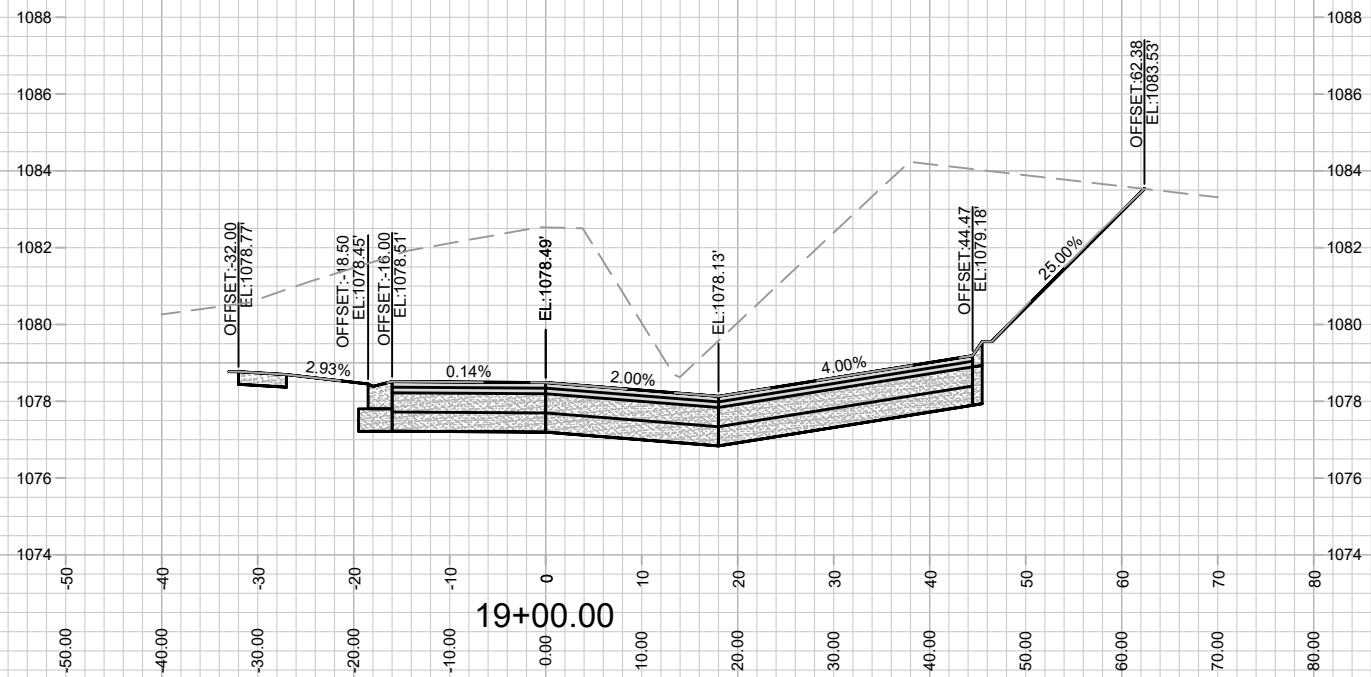
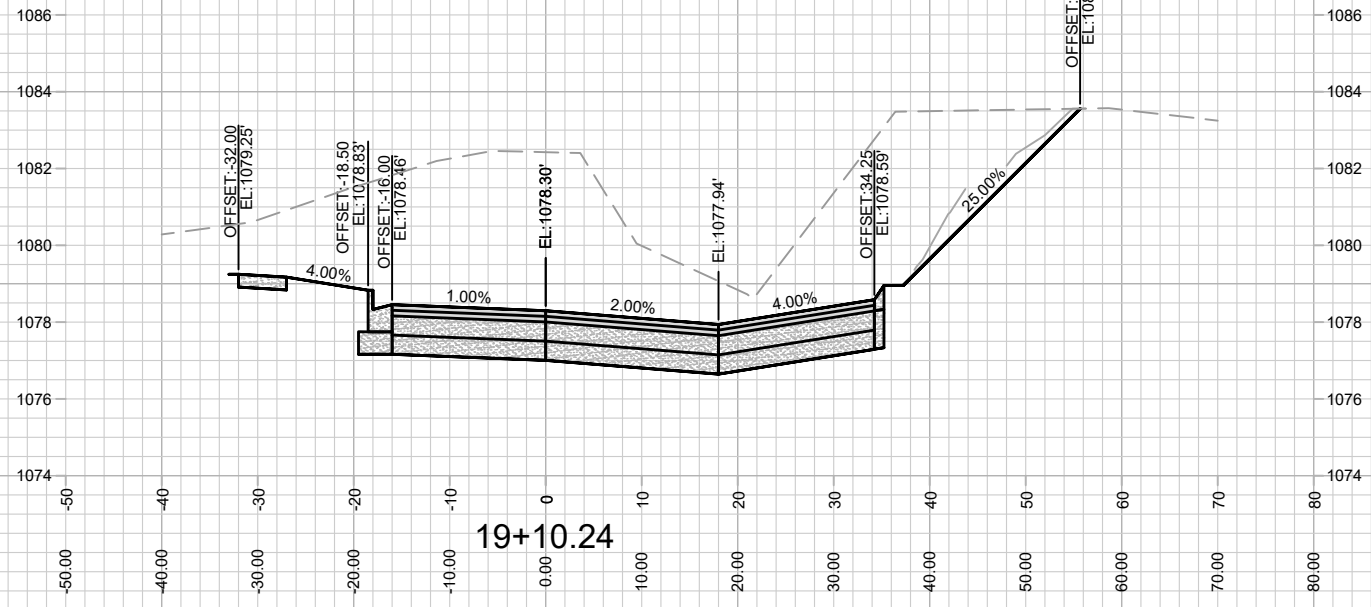
MARK	REVISION	DATE	BY
13762	4/19/2022 10:19 AM	13762	X-4

13762  
 MADISON, WI  
 9064  
 CONTRACT NO:

CROSS SECTION - GENOMIC DRIVE  
 502 GENOMIC DRIVE  
 M:\DESIGN\Projects\13762\CAD\Streets\13762EN-Corridor.dwg



13762  
 X-4



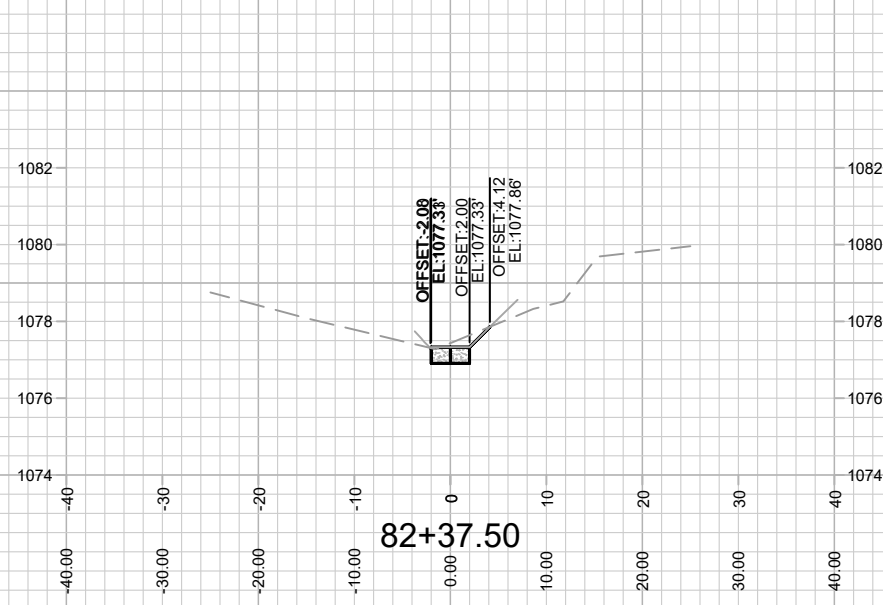
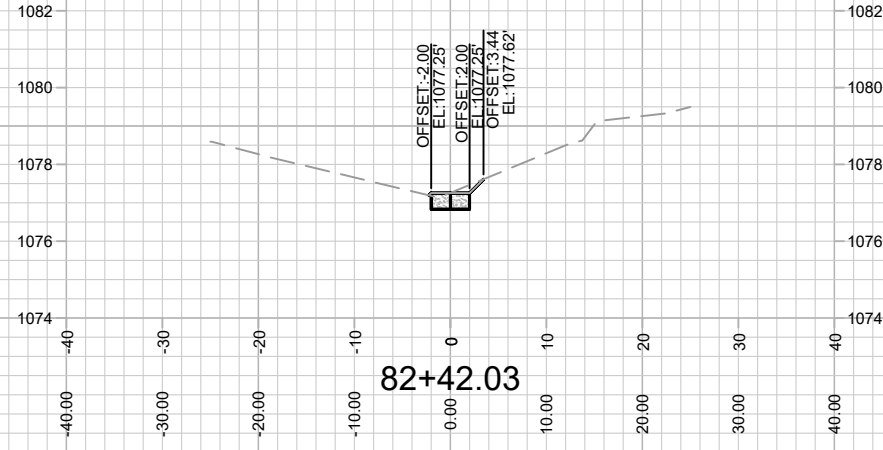
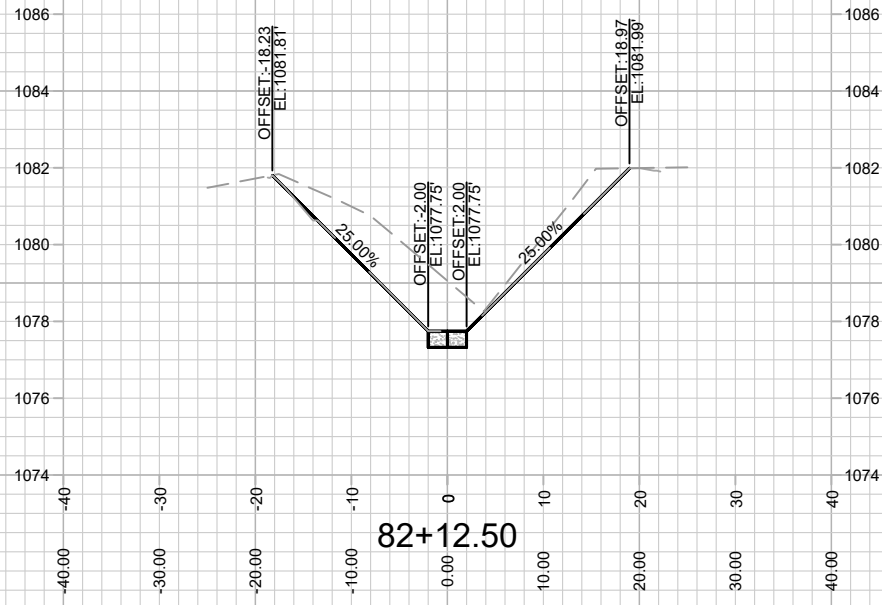
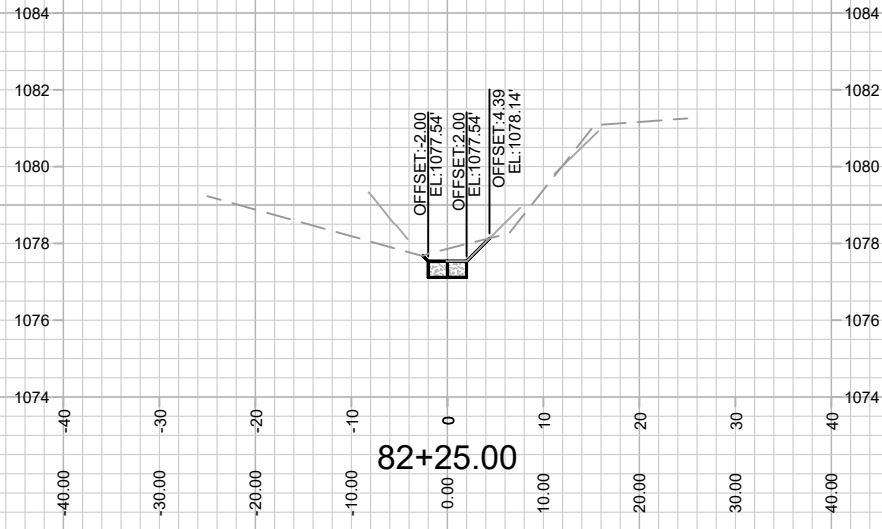
MARK	REVISION	DATE	BY
13762	4/19/2022	10:19 AM	Scale: #####
13762			X-5

13762  
MADISON, WI  
9064  
CONTRACT NO:

CROSS SECTION - GENOMIC DRIVE  
502 GENOMIC DRIVE  
M:\DESIGN\Projects\13762\CAD\Streets\13762EN-Corridor.dwg



13762  
X-5



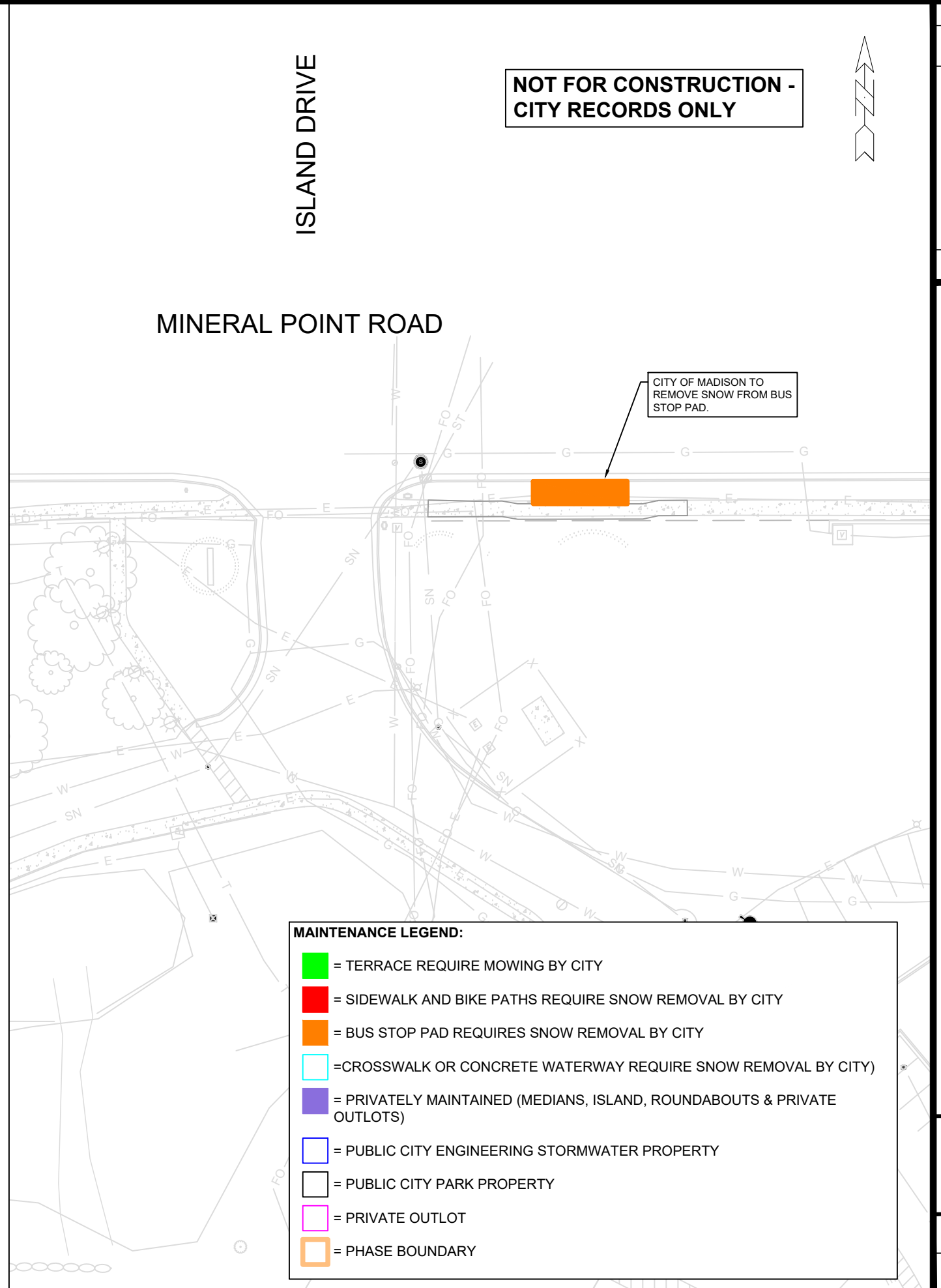
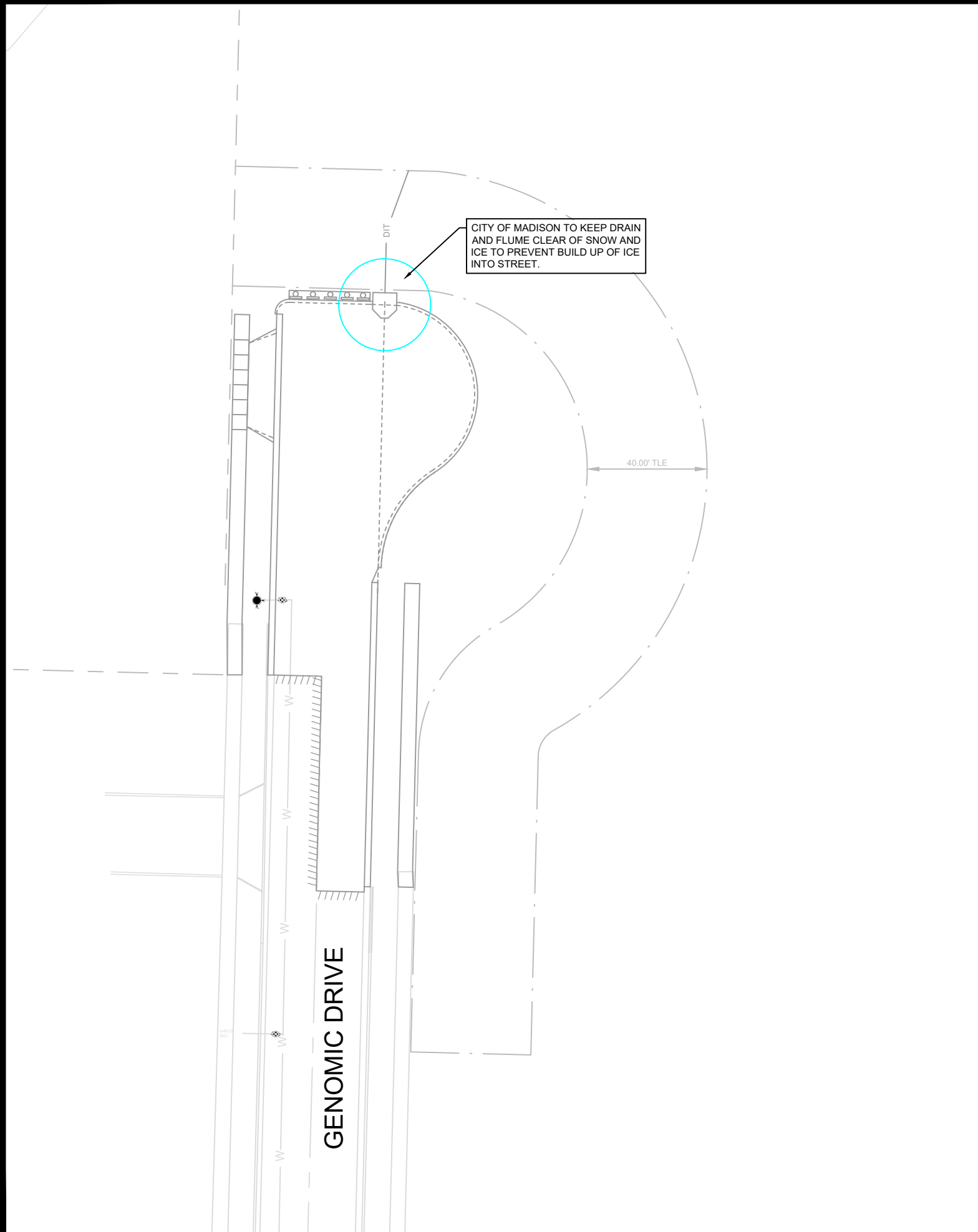
13762  
X-6

CROSS SECTION - DITCH  
502 GENOMIC DRIVE

M:\DESIGN\Projects\13762\CAD\Streets\13762EN-Corridor.dwg

13762  
MADISON, WI  
9064  
CONTRACT NO:


MARK	REVISION	DATE	BY
13762	Designed By: LMC	Date: 4/19/2022 10:22 AM	Scale: #####
			X-6



**MAINTENANCE LEGEND:**

- = TERRACE REQUIRE MOWING BY CITY
- = SIDEWALK AND BIKE PATHS REQUIRE SNOW REMOVAL BY CITY
- = BUS STOP PAD REQUIRES SNOW REMOVAL BY CITY
- = CROSSWALK OR CONCRETE WATERWAY REQUIRE SNOW REMOVAL BY CITY
- = PRIVATELY MAINTAINED (MEDIANS, ISLAND, ROUNDABOUTS & PRIVATE OUTLOTS)
- = PUBLIC CITY ENGINEERING STORMWATER PROPERTY
- = PUBLIC CITY PARK PROPERTY
- = PRIVATE OUTLOT
- = PHASE BOUNDARY

NOT FOR CONSTRUCTION -  
CITY RECORDS ONLY

	<b>13762</b> <b>MN-1</b>	<b>13762</b> <b>MADISON, WI</b> <b>9064</b>	<b>13762</b> <b>MN-1</b>
<b>MAINTENANCE PLAN</b> <b>502 GENOMIC DRIVE</b>	M:\DESIGN\Projects\13762\CAD\Streets\13762EN-Maintenance.dwg		
		CONTRACT NO:	Scale: #/###/### Date: 3/27/2022 8:11 AM REVISION MARK DESIGNED BY: #/## DATE BY