

Madison, Wisconsin

CITY OF MADISON

CITY ENGINEERING DIVISION

DEPARTMENT OF PUBLIC WORKS

PLAN OF PROPOSED IMPROVEMENT

INDEX OF SHEETS

SHEET NO. D1-D3	NOTES AND TYPICAL SECTION
SHEET NO. P1-P3	STREET PLAN & PROFILES
SHEET NO. U1-U5	UTILITY PLAN & PROFILES
SHEET NO. USAN	SANITARY SEWER SCHEDULE
SHEET NO. USTM	STORM SEWER SCHEDULE
SHEET NO. W1-W4	WATER PLANS
SHEET NO. X1-X6	CROSS SECTIONS
SHEET NO. PBM-1	PROPERTY BOUNDARY MARKER PLAN
NO MAINTENANCE PLAN	

EAGLE TRACE PHASE 5

CITY PROJECT NO. 13763

CONTRACT NO. 9066

PUBLIC IMPROVEMENT PROJECT APPROVED

FEBRUARY 1, 2022

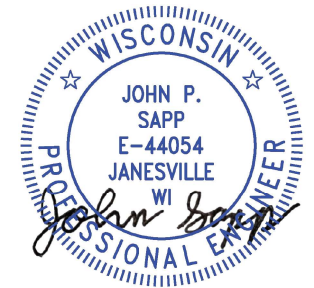
BY THE COMMON COUNCIL OF MADISON, WISCONSIN

PUBLIC IMPROVEMENT DESIGN APPROVED BY:

 Apr 6, 2023

City Engineer Date

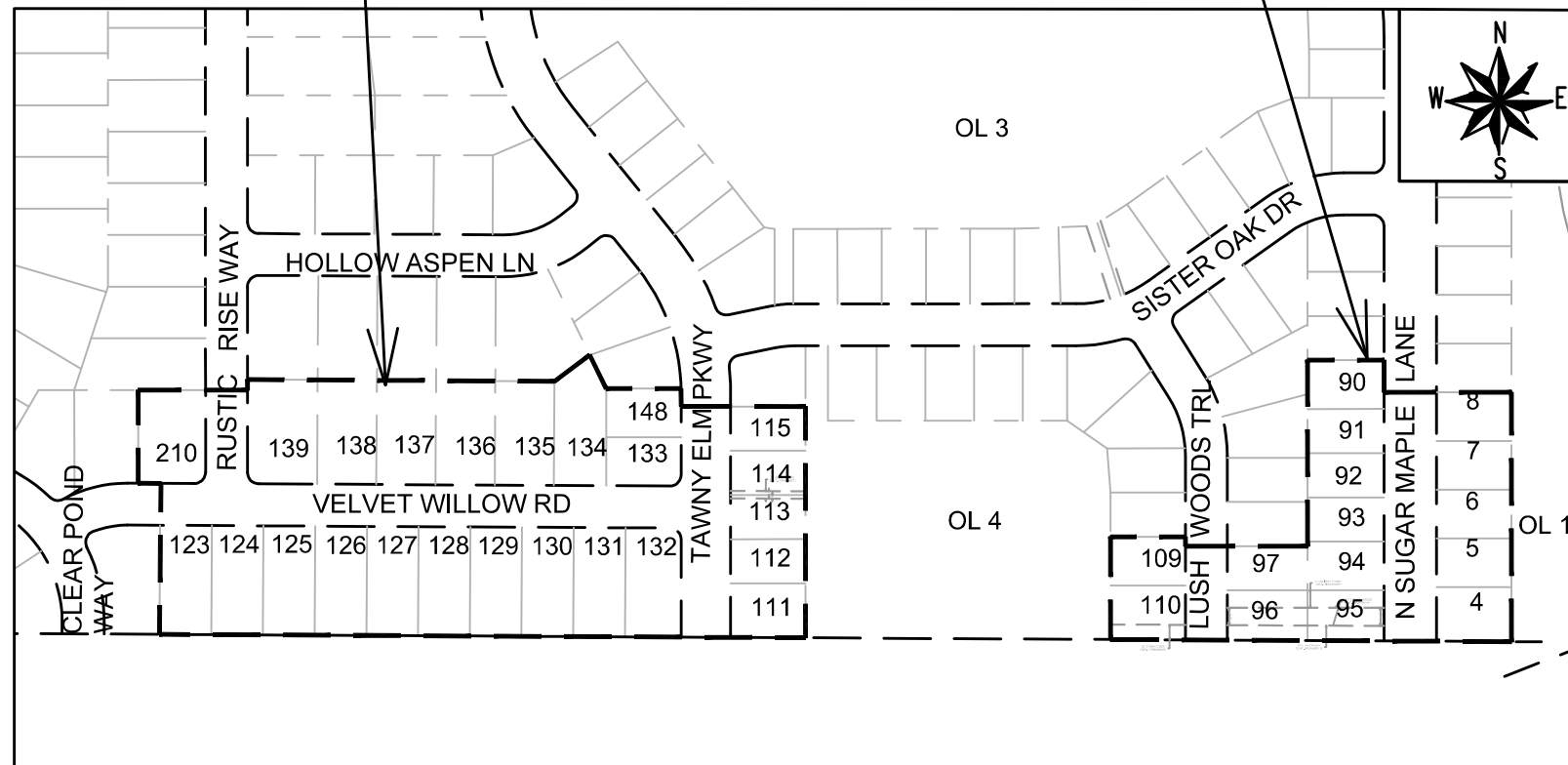
STREET GRADES DESIGNED BY:



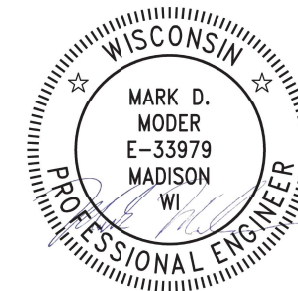
Apr 6, 2023

ADJACENT PROJECT (PHASE 6)

THIS PROJECT (PHASE 5)

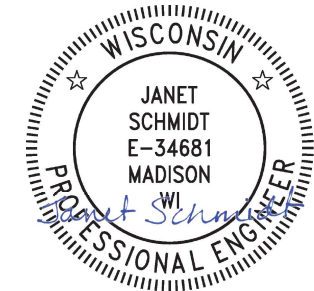


SANITARY SEWER DESIGNED BY:



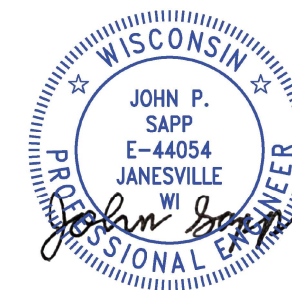
Apr 6, 2023

STORM SEWER DESIGNED BY:



Apr 6, 2023

STREET GEOMETRY DESIGNED BY:



Apr 6, 2023

WATER DESIGNED BY:



Apr 6, 2023

PLOT SCALE: 1"=0" = 1'-0" XREF

PLOT NAME: ---

REV. DATE: 3/16/2022 7:28 AM

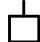


ORIGINATOR: CITY_OF_MADISON

ALL PROPOSED STREET TREE REMOVALS WITHIN THE RIGHT OF WAY SHALL BE REVIEWED BY CITY FORESTRY BEFORE THE PLAN COMMISSION MEETING. STREET TREE REMOVALS REQUIRE APPROVAL AND A TREE REMOVAL PERMIT ISSUED BY CITY FORESTRY. ANY STREET TREE REMOVALS REQUESTED AFTER THE DEVELOPMENT PLAN IS APPROVED BY THE PLAN COMMISSION OR THE BOARD OF PUBLIC WORKS AND CITY FORESTRY WILL REQUIRE A MINIMUM OF A 72-HOUR REVIEW PERIOD WHICH SHALL INCLUDE THE NOTIFICATION OF THE ALDERPERSON WITHIN WHO'S DISTRICT IS AFFECTED BY THE STREET TREE REMOVAL(S) PRIOR TO A TREE REMOVAL PERMIT BEING ISSUED.

AS DEFINED BY THE SECTION 107.13 OF CITY OF MADISON STANDARD SPECIFICATIONS FOR PUBLIC WORKS CONSTRUCTION: NO EXCAVATION IS PERMITTED WITHIN 5 FEET OF THE TRUNK OF THE STREET TREE OR WHEN CUTTING ROOTS OVER 3 INCHES IN DIAMETER. IF EXCAVATION IS NECESSARY, THE CONTRACTOR SHALL CONTACT MADISON CITY FORESTRY (266-4816) PRIOR TO EXCAVATION. CITY OF MADISON FORESTRY PERSONNEL SHALL ASSESS THE IMPACT TO THE TREE AND TO ITS ROOT SYSTEM PRIOR TO WORK COMMENCING. TREE PROTECTION SPECIFICATIONS CAN BE FOUND ON THE FOLLOWING WEBSITE: [HTTPS://WWW.CITYOFMADISON.COM/BUSINESS/PW/SPECS.CFM](https://www.cityofmadison.com/business/pw/specs.cfm)

DEVELOPER MUST SUBMIT A TRAFFIC CONTROL PLAN TO CITY TRAFFIC ENGINEERING AT LEAST 14 DAYS PRIOR TO THE START OF WORK. WORK SHALL NOT PROCEED UNTIL AN APPROVED TRAFFIC CONTROL PLAN IS IN PLACE.

CONTACT PROJECT ENGINEER AND STREET DESIGNER DAYENU SIMON AT DSIMON@CITYOFMADISON.COM FOR CAD AND ALIGNMENT DATA PRIOR TO STAKING.

CONVENTIONAL SIGNS	
FIELD VERIFY ALL UTILITY LOCATIONS	
GAS	—— G ——
STORM SEWER	—— ST ——
SANITARY SEWER	—— SN ——
WATER	—— W ——
BURIED ELECTRIC	—— E ——
OVERHEAD ELECTRIC	—— OH ——
POWER POLE	
ADA COMPLIANT RAMP W/ DETECTABLE WARNING FIELD	
COMBUSTIBLE FLUIDS	

ALL PAVEMENT IN LUSH WOOD PLACE RIGHT-OF-WAY SHALL BE TYPE A PAVEMENT PER STANDARD DETAIL DRAWING 4.02

ALL PAVEMENT IN N SUGAR MAPLE LANE RIGHT-OF-WAY SHALL BE TYPE C PAVEMENT PER STANDARD DETAIL DRAWING 4.0

UNDERDRAINS SHALL BE INSTALLED PER STANDARD DETAIL DRAWING 4.05 FOR 75' ON EACH SIDE OF THE LOW POINT, OR TO THE NEAREST CURB HIGH POINT. ALL UNDERDRAIN SHALL BE WRAPPED.

ALL GUTTERS SHALL DRAIN WITH A MINIMUM GRADE OF 0.5% TOWARD STORM SEWER INLETS.

ALL DITCHES SHALL DRAIN WITH A MINIMUM GRADE OF 0.5%

THE CROSS SLOPE OF SIDEWALKS AND BARRIER FREE SIDEWALK CURB RAMPS SHALL TYPICALLY BE 1.5%. THE LONGITUDINAL GRADE OF BARRIER FREE SIDEWALK CURB RAMPS SHALL NOT EXCEED 8.33%. ALL SIDEWALK RAMPS SHALL BE CONSTRUCTED ACCORDING TO S.D.D. 3.04. AT ALL OTHER LOCATIONS THE LONGITUDINAL GRADE OF SIDEWALKS SHALL NOT BE LESS THAN 0.5% AND SHALL DRAIN TOWARD STORM SEWER INLETS. ALL SIDEWALK AND SIDEWALK RAMP ELEVATIONS AND GRADES SHALL BE FIELD VERIFIED AND SET TO COMPLY WITH THE CITY OF MADISON STANDARD SPECIFICATIONS AND THE A.D.A. GUIDELINES.

CURB STATION AND OFFSETS SHALL BE TO THE EDGE OF PAVEMENT UNLESS OTHERWISE INDICATED. CURB ELEVATIONS SHALL BE TO THE EDGE OF PAVEMENT UNLESS OTHERWISE INDICATED.

POWER POLES AND OTHER OBSTRUCTIONS SHALL BE MOVED TO PROVIDE 2 FEET MINIMUM OF CLEAR DISTANCE FROM ANY FACE OF CURB OR EDGE OF SIDEWALK.

ANY INFORMATION SHOWN ON THIS PLAN, WHICH IS NOT PART OF THIS RIGHT-OF-WAY PROJECT, IS PRELIMINARY AND NOT FOR CONSTRUCTION.

THERE MAY BE EXISTING UTILITIES OR OTHER FEATURES WHICH ARE EITHER NOT SHOWN OR SHOWN INCORRECTLY ON THIS PLAN. IT IS THE RESPONSIBILITY OF THE DEVELOPER TO LOCATE AND IDENTIFY ALL UTILITIES AND TOPOGRAPHY WHICH MAY AFFECT THE CONSTRUCTION OF THESE IMPROVEMENTS.

ALL PERMANENT SIGNING AND POSTING WILL BE DETERMINED AND PROVIDED BY THE TRAFFIC ENGINEERING DIVISION, FOLLOWING CONSTRUCTION OF THESE IMPROVEMENTS.

THE DEVELOPER SHALL PROVIDE, INSTALL AND MAINTAIN ALL STREET END BARRICADES, SIGNING AND TRAFFIC CONTROL, AS REQUIRED BY THE CITY TRAFFIC ENGINEER.

PAVEMENT SAWCUTS SHALL BE AS DIRECTED BY THE CITY CONSTRUCTION ENGINEER. SAWCUTS SHOWN ON THE PLAN ARE APPROXIMATE.

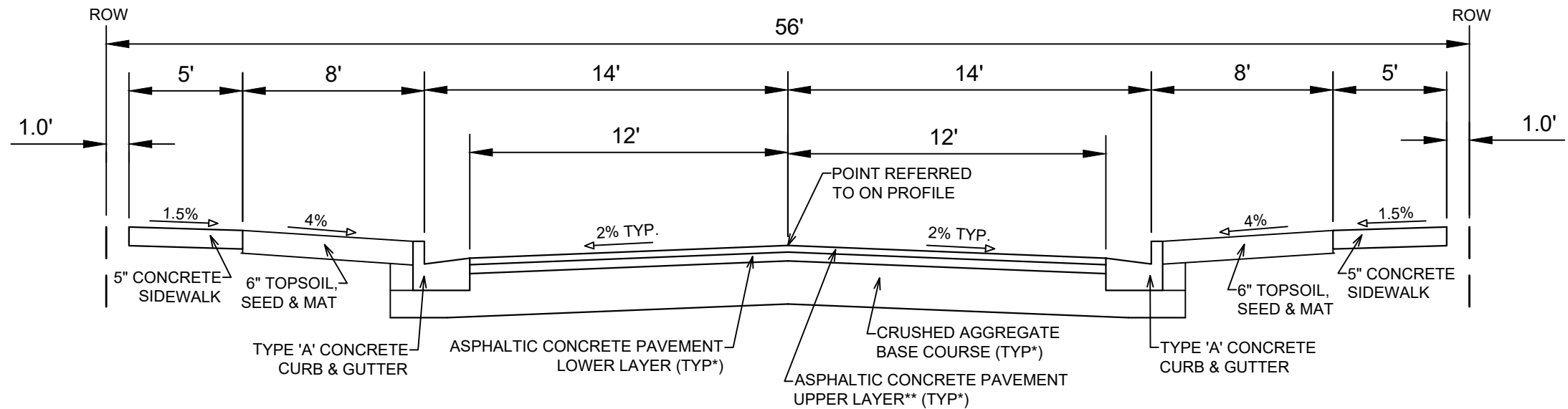
ALL WORK IN THE RIGHT OF WAY AND PUBLIC EASEMENTS SHALL BE IN ACCORDANCE WITH THE CITY OF MADISON STANDARD SPECIFICATIONS FOR PUBLIC WORKS CONSTRUCTION

DATE	BY
2/17/2022	10:42 AM
REVISION	Scale: #####
MARK	13763
Designed By: ##	13763

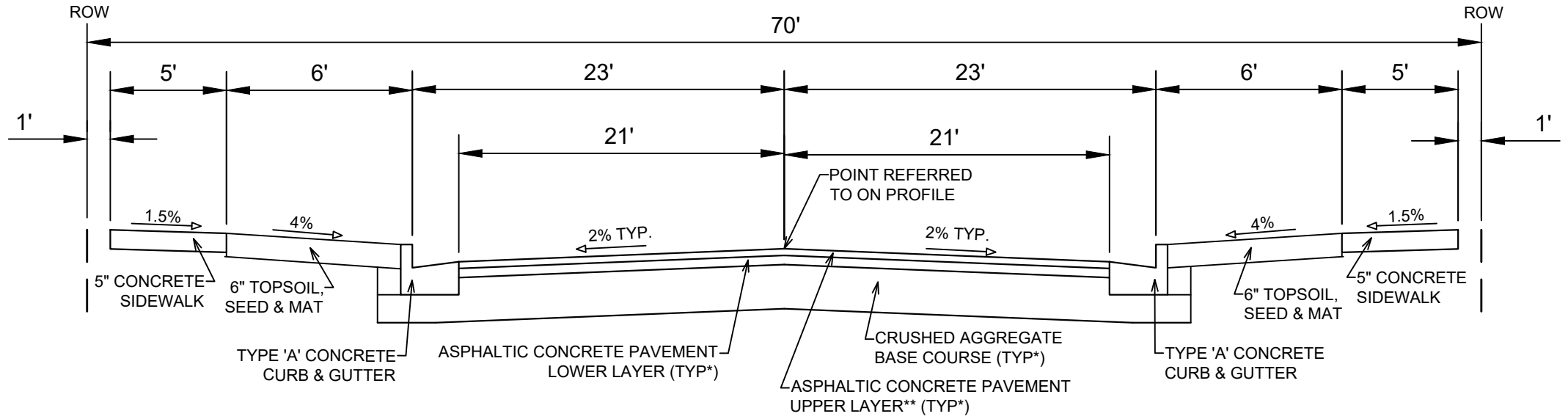
13763
MADISON, WI
9066
CONTRACT NO:

GENERAL NOTES
EAGLE TRACE 5
M:\DESIGN\Projects\13763\CAD\Streets\13763EN-Details.dwg





TYPICAL SECTION
LUSH WOOD PLACE
NOT TO SCALE



TYPICAL SECTION
N SUGAR MAPLE LANE
NOT TO SCALE

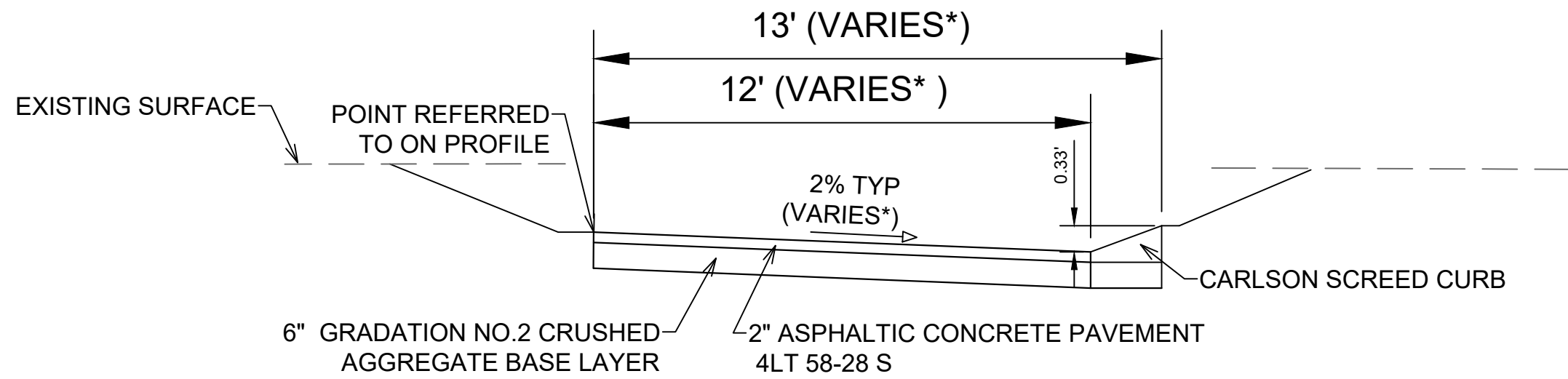
NOTES:

- * LUSH WOOD PLACE SHALL BE CONSTRUCTED AS TYPE 'A' PAVEMENT PER CITY OF MADISON MINIMUM PAVEMENT DESIGN
- * N SUGAR MAPLE LANE SHALL BE CONSTRUCTED AS TYPE 'C' PAVEMENT PER CITY OF MADISON MINIMUM PAVEMENT DESIGN
- ** THE DEVELOPER SHALL BE RESPONSIBLE FOR ALL SURFACE PAVING (PROJECT No. 13763, CONTRACT No 9065)

CITY OF MADISON MINIMUM PAVEMENT DESIGN †

TYPE	CRUSHED AGGREGATE BASE COURSE		ASPHALTIC CONCRETE PAVEMENT			
	LOWER LAYER GRADATION 1	UPPER LAYER GRADATION 2	LOWER LAYER		UPPER LAYER	
			TYPE	THICKNESS	TYPE	THICKNESS
A	6"	6"	4 LT 58-28 S	1.75"	4 LT 58-28 S	1.75"
B	6"	6"	3 LT 58-28 S	2.50"	4 LT 58-28 S	2.00"
C	6"	6"	3 MT 58-28 S/H	3.50"	4 MT 58-28 S/H	2.00"

13763	MADISON, WI	9066	CONTRACT NO:	13763	D-2
TYPICAL SECTION EAGLE TRACE 5 M:\DESIGN\Projects\13763\CAD\Streets\13763EN-Details_recover.dwg					
13763 D-2					



TYPICAL SECTION
 LOT 95-96 TEMPORARY ALLEY
 FROM STA 100+14.50 TO STA 102+48.50
 NOT TO SCALE

*VARIES FROM 100+14.50 TO 100+38.00
 AND FROM 102+27.00 TO 102+48.50
 SEE PLANS



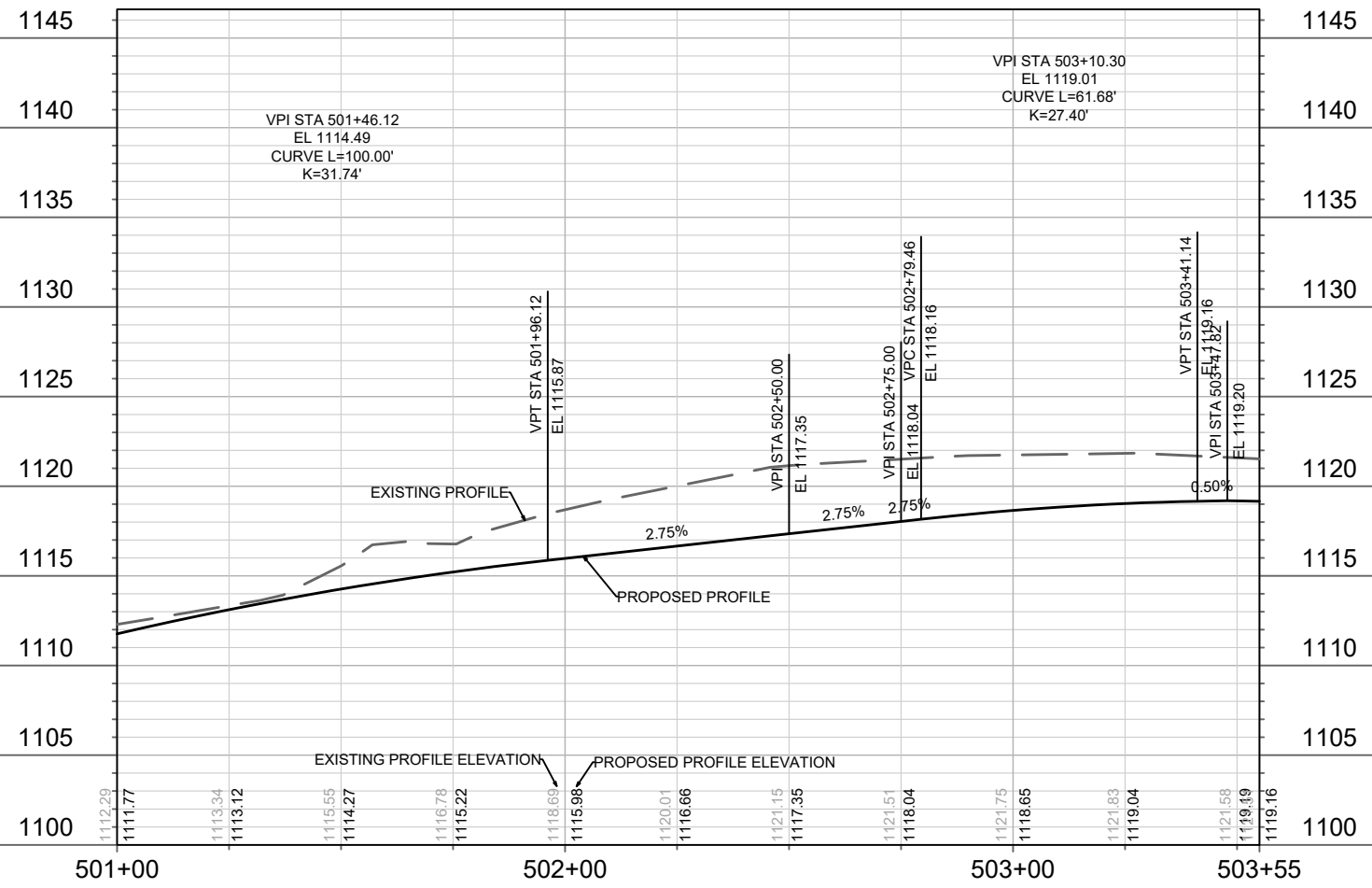
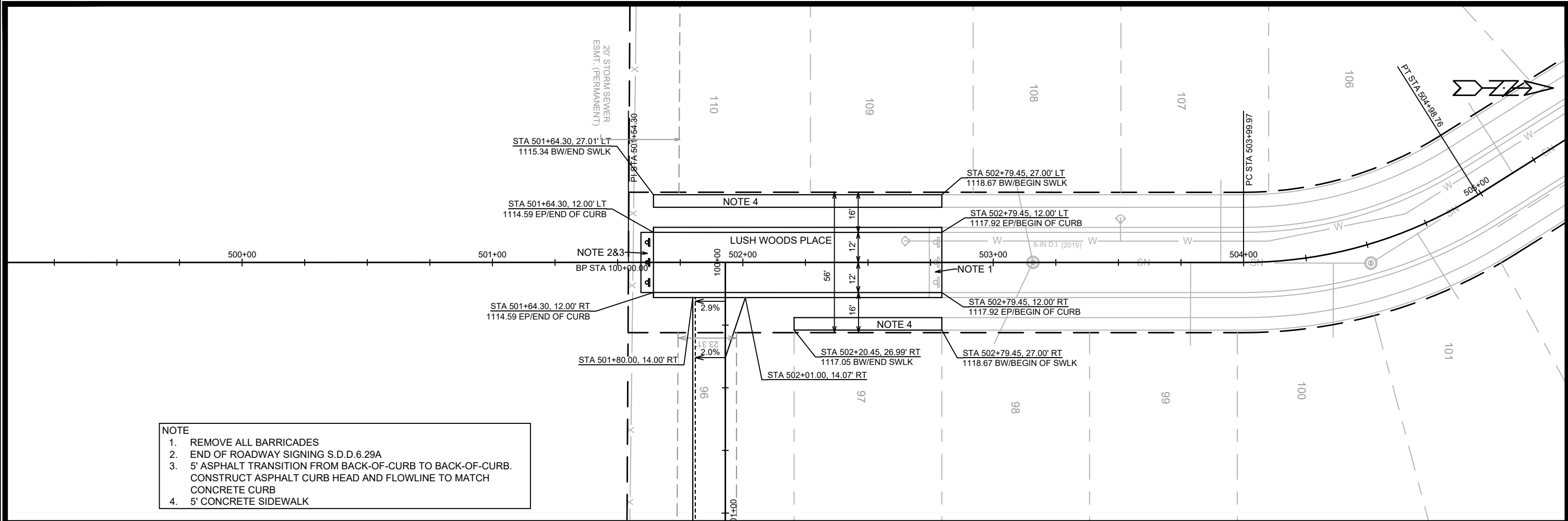
MARK	REVISION	DATE	BY
13763			
Designed By: ##	Date: 4/4/2023 12:19 PM	Scale: #####	D-3

13763
 MADISON, WI
 9066
 CONTRACT NO:

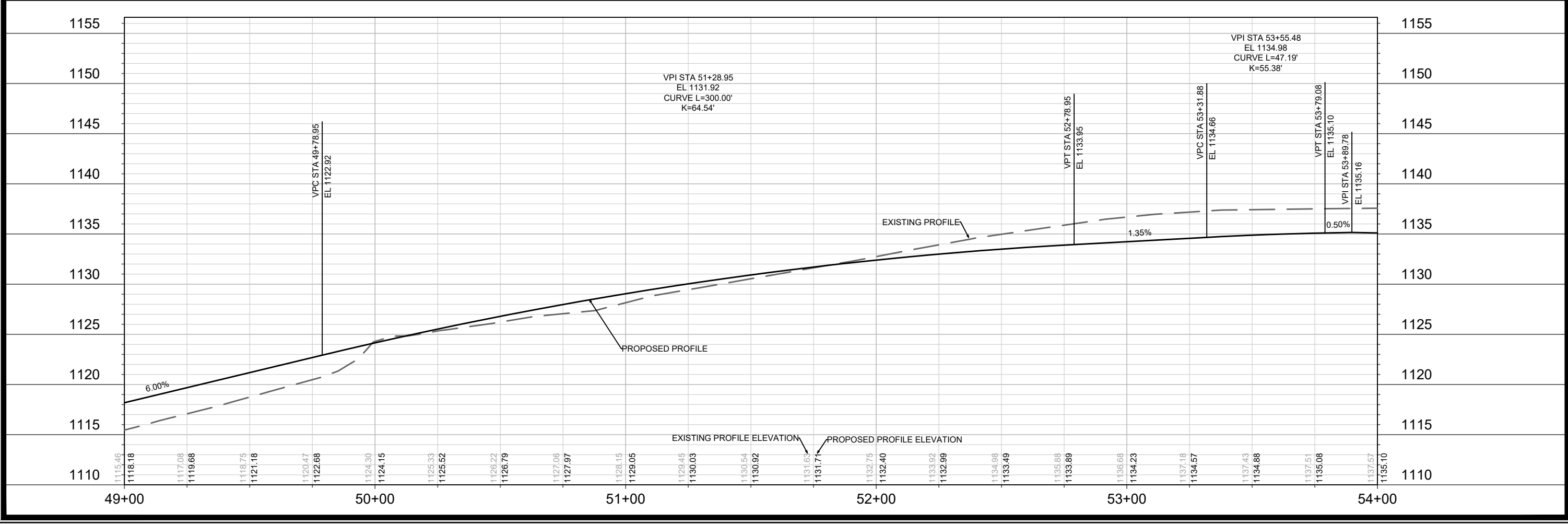
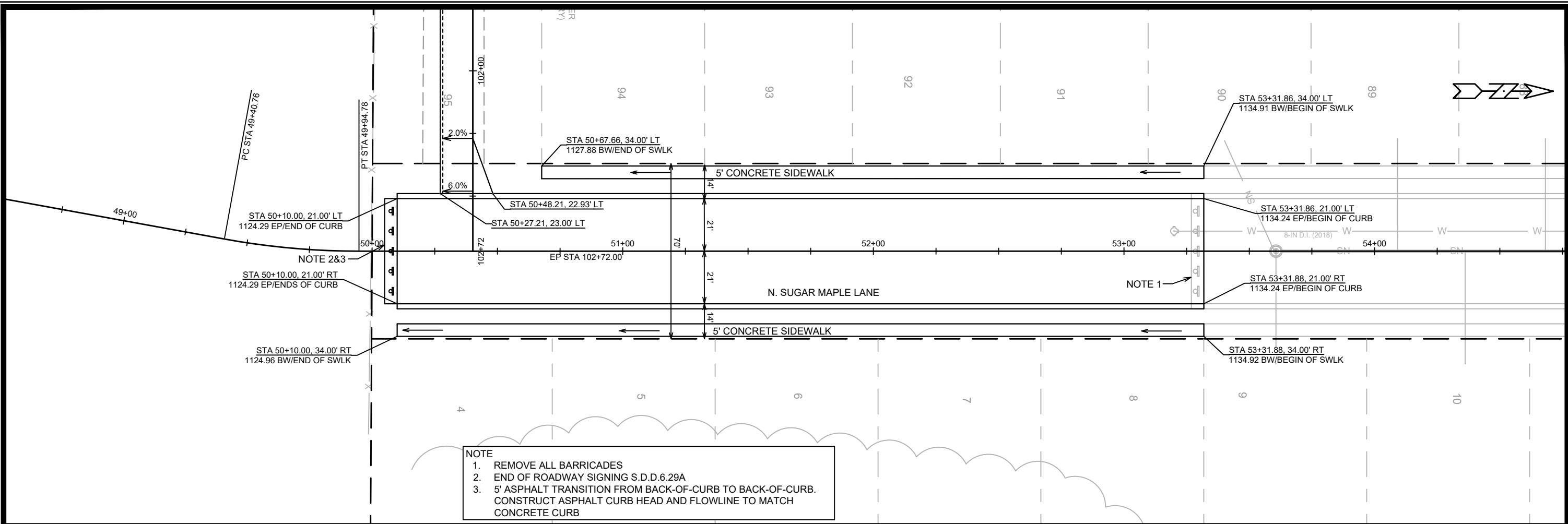


13763
 D-3

- NOTE
1. REMOVE ALL BARRICADES
 2. END OF ROADWAY SIGNING S.D.D.6.29A
 3. 5' ASPHALT TRANSITION FROM BACK-OF-CURB TO BACK-OF-CURB. CONSTRUCT ASPHALT CURB HEAD AND FLOWLINE TO MATCH CONCRETE CURB
 4. 5' CONCRETE SIDEWALK



13763	MADISON, WI	9066	CONTRACT NO:	13763	P-1
LUSH WOOD PLACE PLAN & PROFILE		EAGLE TRACE 5		13763	
M:\DESIGN\Projects\13763\CAD\Streets\13763EN-PnP.dwg		CITY OF MADISON WISCONSIN		P-1	



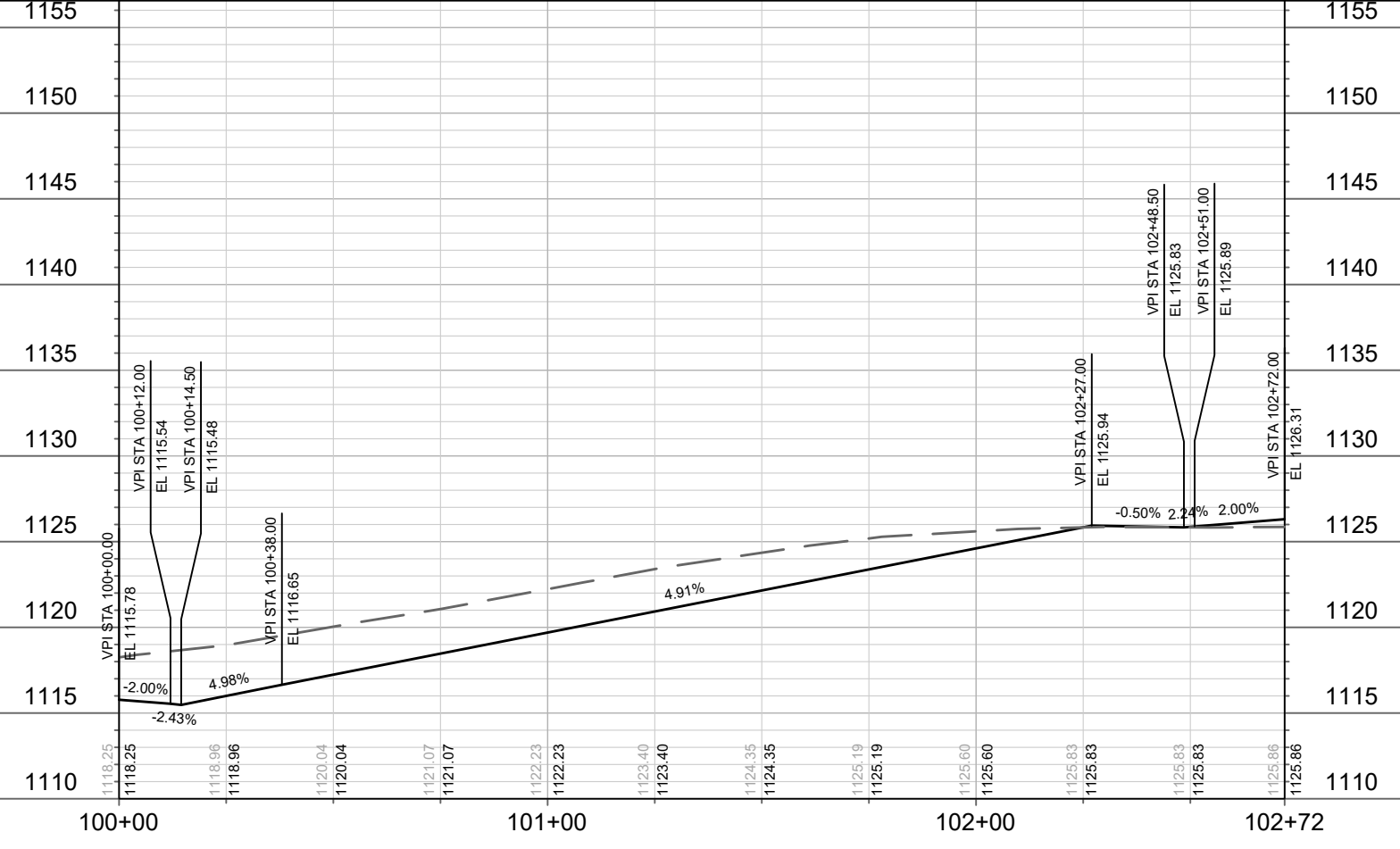
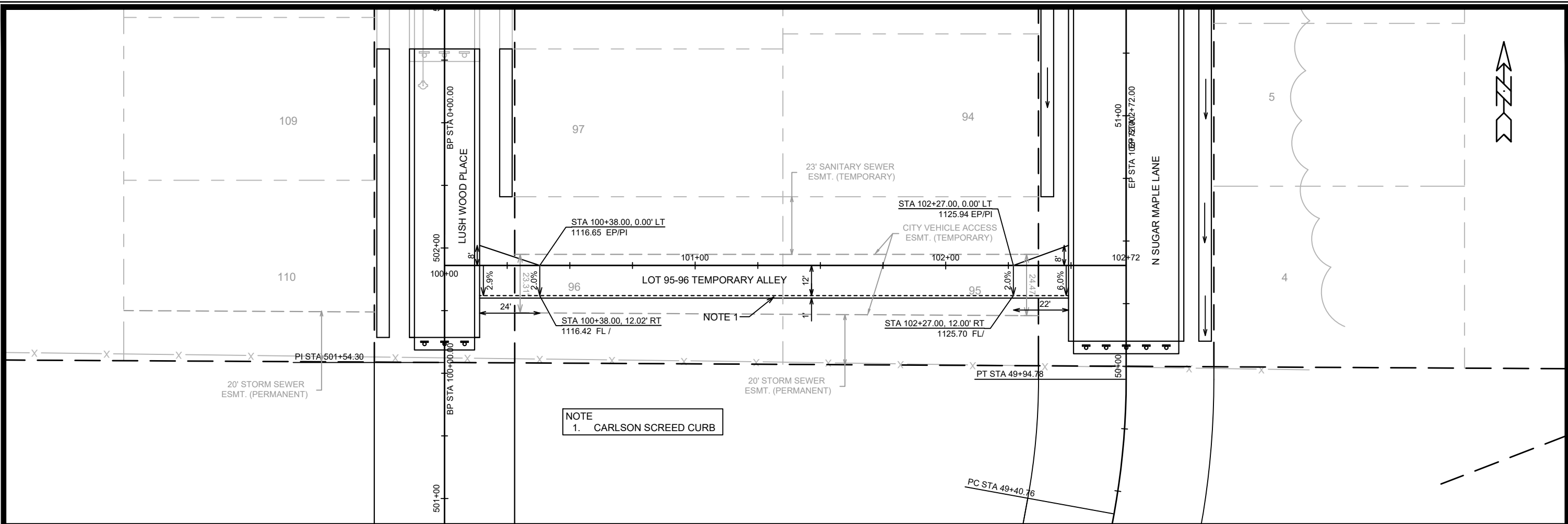
DATE	BY
REVISION	
DESIGNED BY: ###	13763
DATE: 4/17/2023 11:54 AM	
SCALE: 1" = 40'	
PAGE: P-2	

13763
MADISON, WI
CONTRACT NO: 9066

N SUGAR MAPLE PLAN & PROFILE
EAGLE TRACE 5

M:\DESIGN\Projects\13763\CAD\Streets\13763EN-PnP.dwg

13763
P-2



MARK	REVISION	DATE	BY

13763
MADISON, WI
9066
CONTRACT NO:

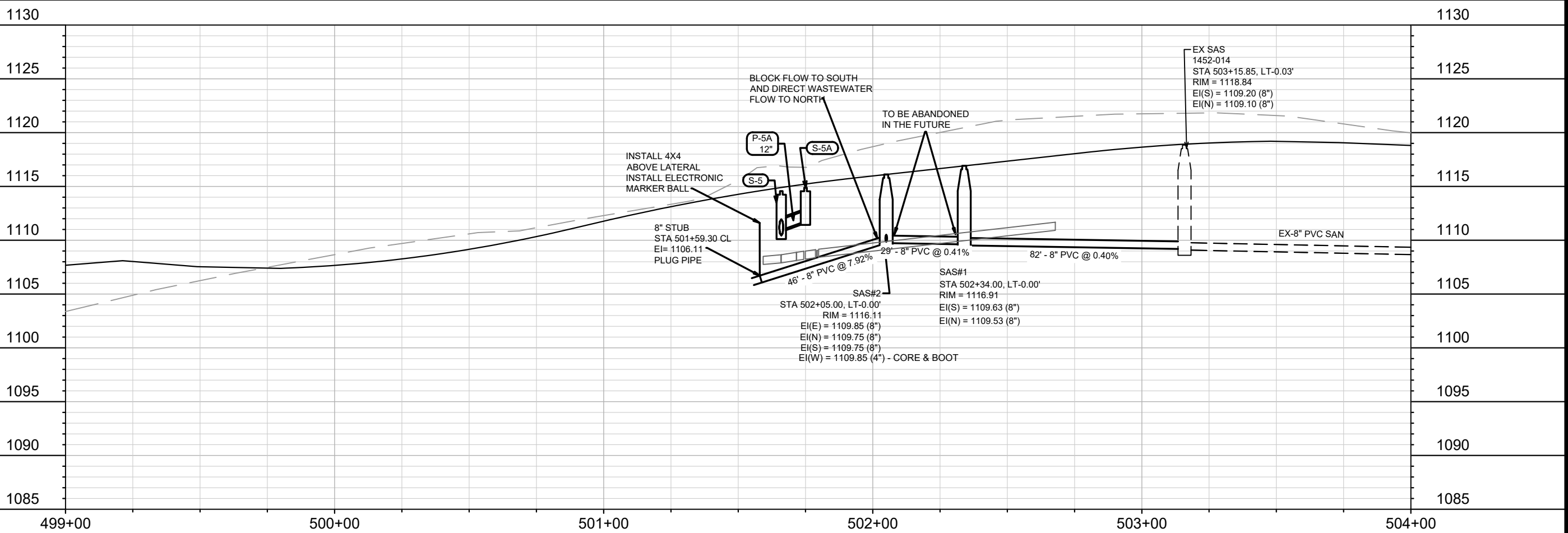
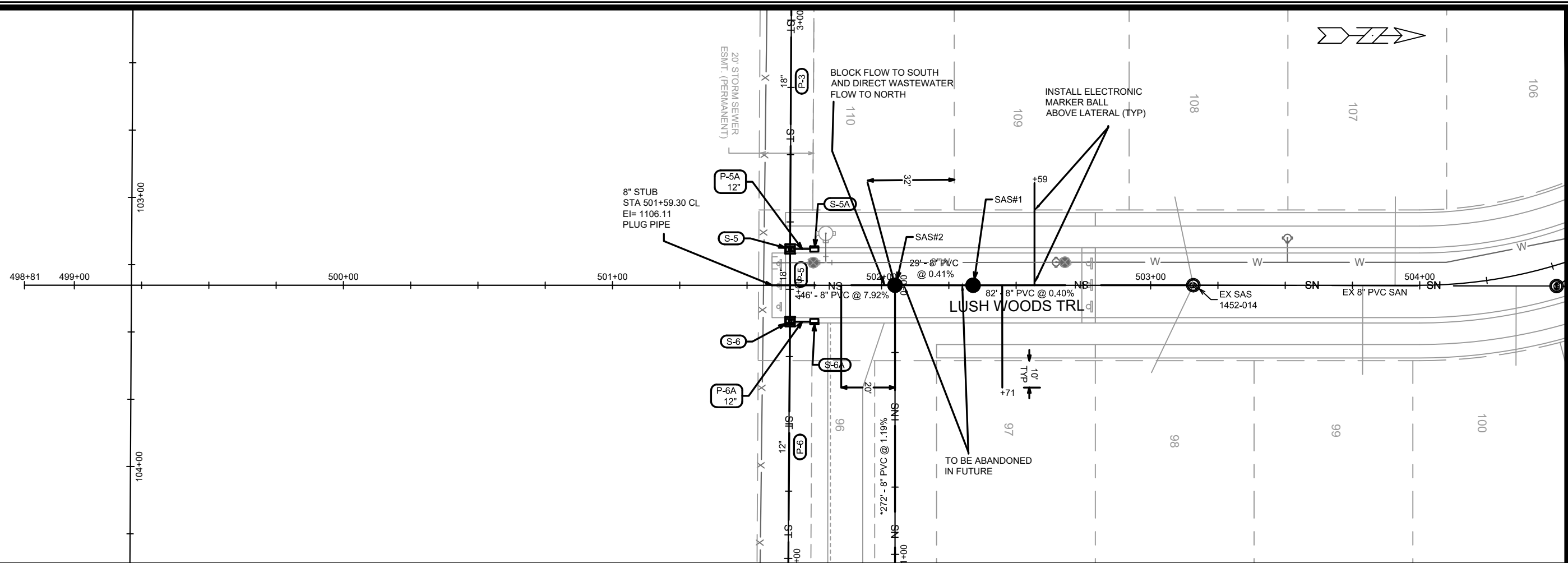
LOT 95-96 TEMPORARY ALLEY
EAGLE TRACE: PHASE 5



13763
P-3

M:\DESIGN\Projects\13763\CAD\Streets\13763EN-PnP.dwg

Designed By: ##
Date: 2/10/2022 2:38 PM
Scale: 1" = 40'
P-3



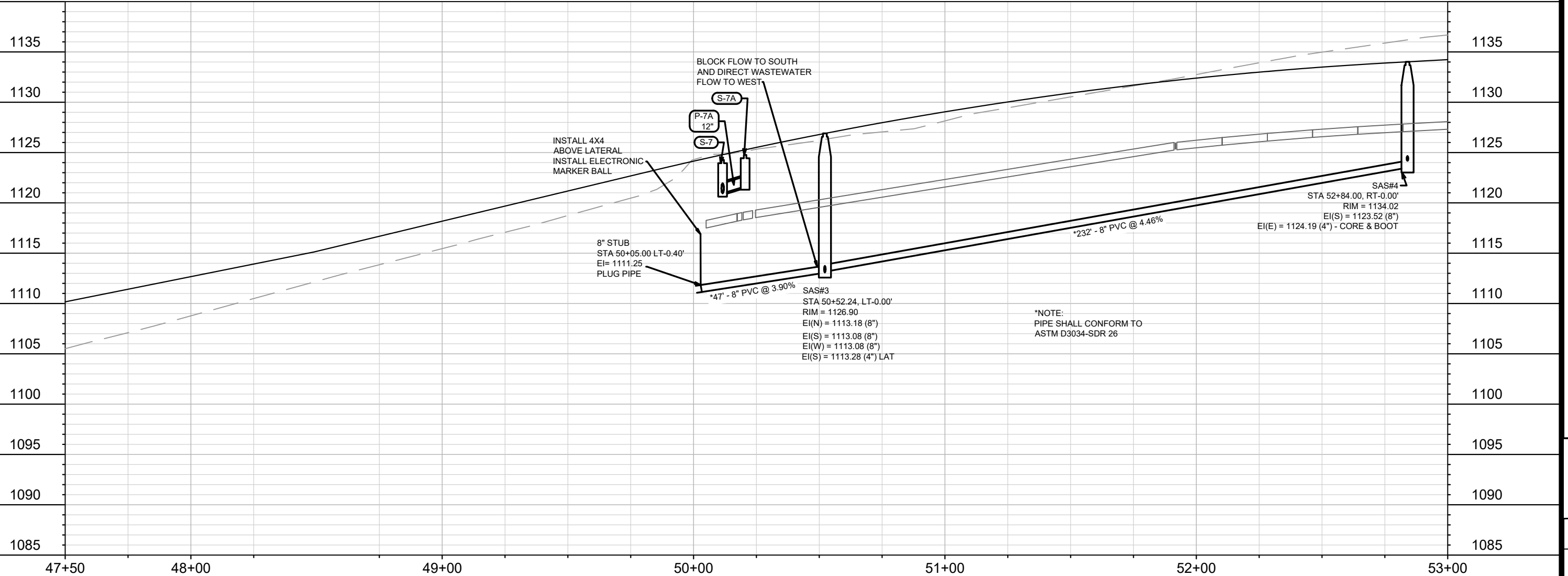
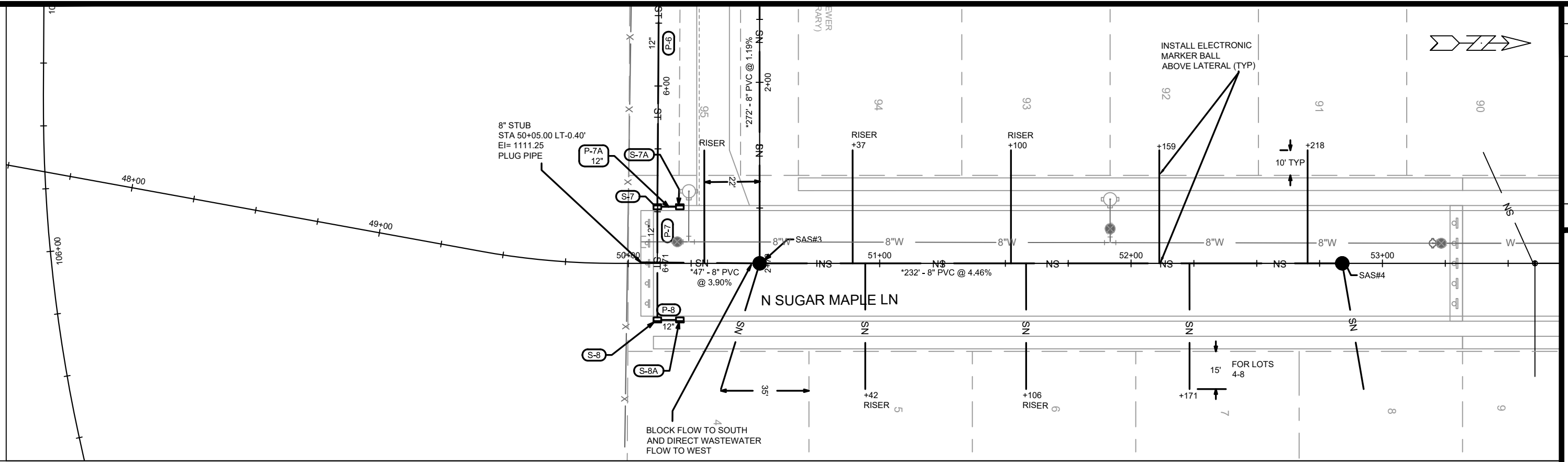
MARK	REVISION	DATE	BY
13763	U-1	10/25/2021	EEA

13763
MADISON, WI
CONTRACT NO: 9066

LUSH WOODS TRL - UTILITIES PLAN & PROFILE
EAGLE TRACE PHASE 5
M:\DESIGN\Projects\13763\CAD\Sewers\13763SWR-PipeNetwork.dwg



13763
U-1

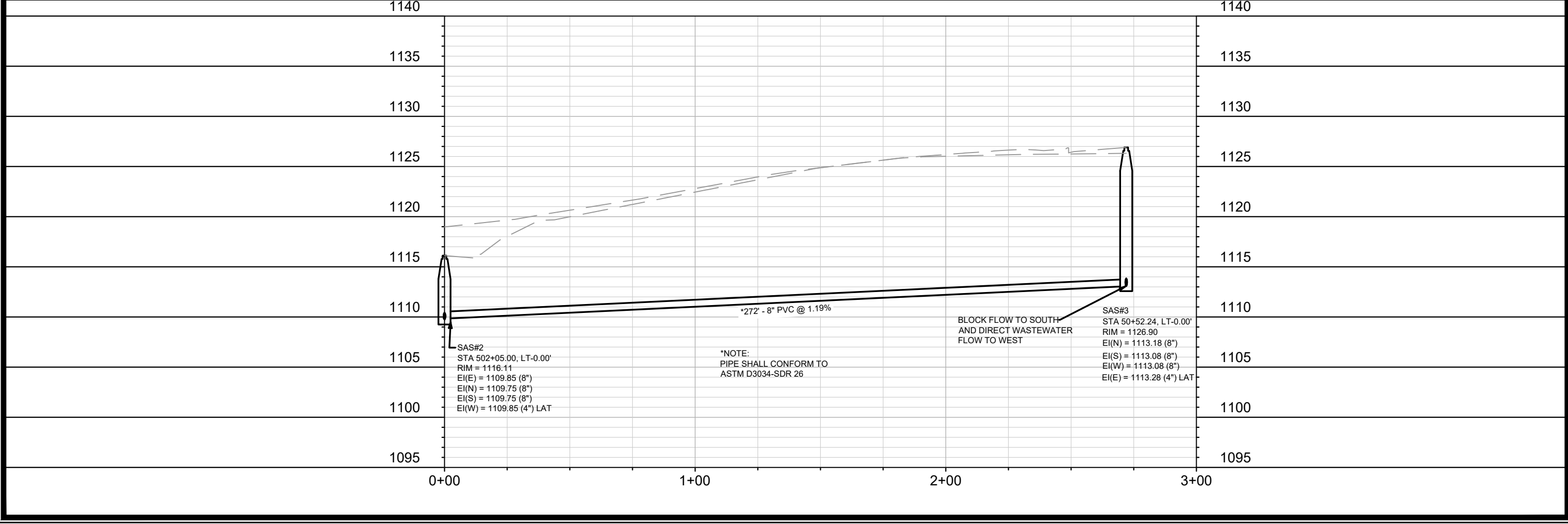
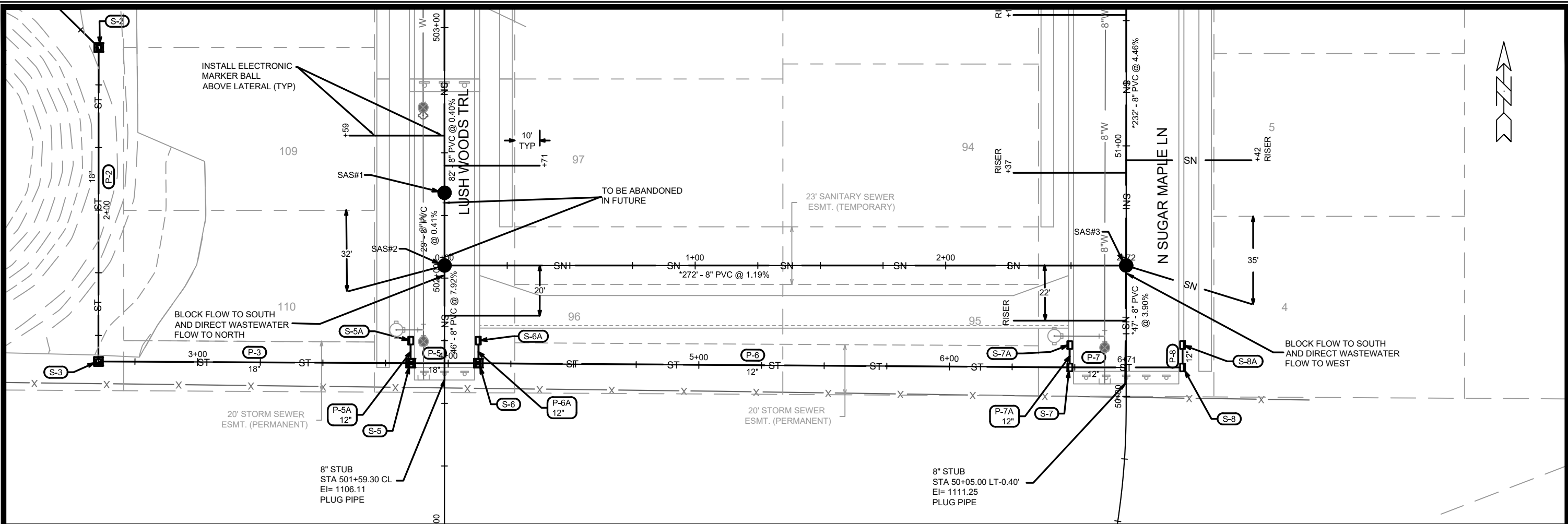


MARK	REVISION	DATE	BY
13763	10/25/2021	10/25/2021	U-2
Scale: 1" = 40'			

13763
MADISON, WI
13763
CONTRACT NO:

N SUGAR MAPLE LN - UTILITIES PLAN & PROFILE
EAGLE TRACE PHASE 5
M:\DESIGN\Projects\13763\CAD\Sewer\13763SWR-PipeNetwork.dwg

13763
U-2



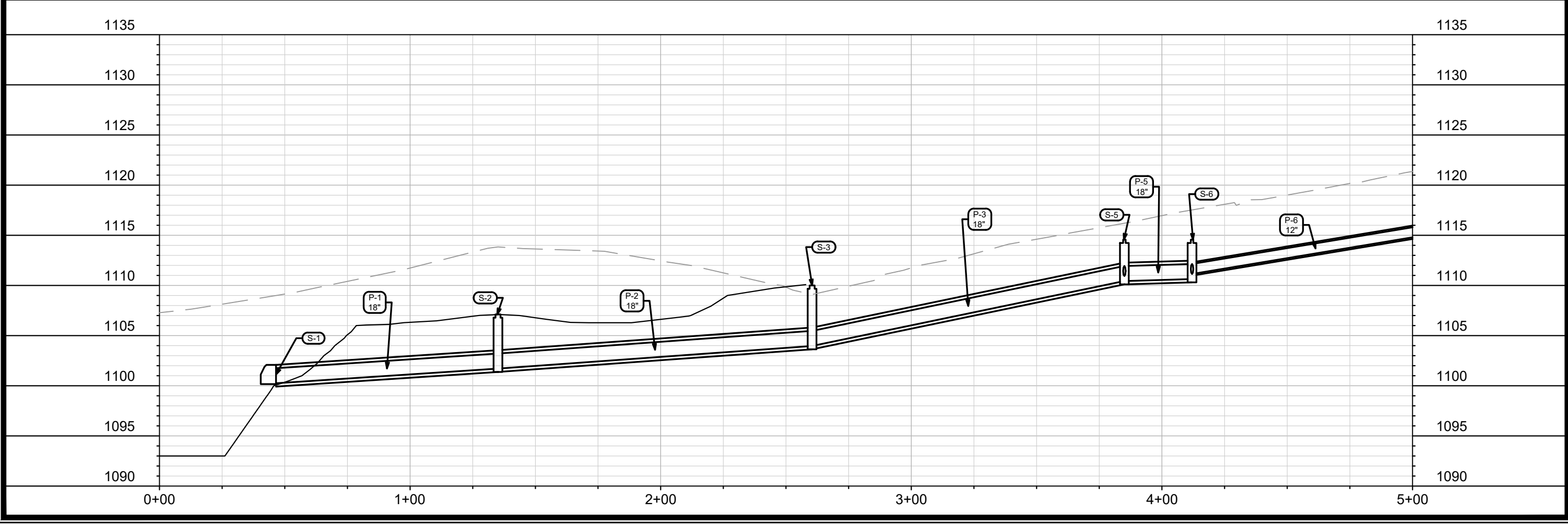
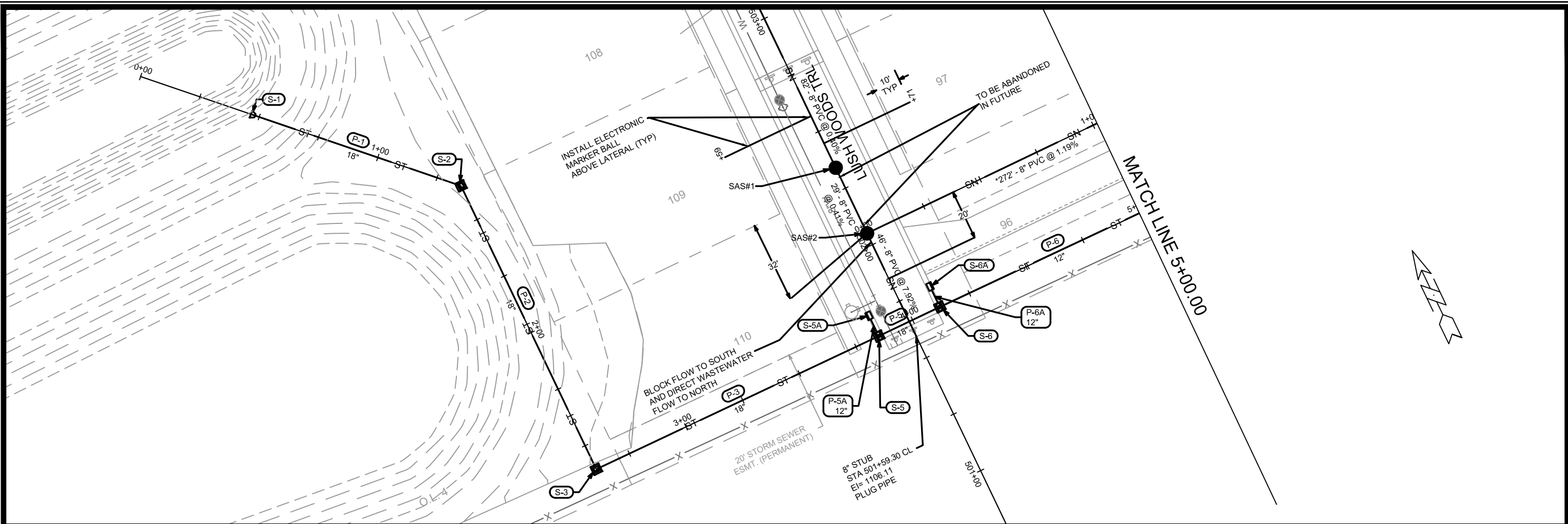
MARK	REVISION	DATE	BY
13763	U-3	4/15/2023 12:58 PM	Scale: 1" = 40'

13763
MADISON, WI
CONTRACT NO: 9066

TEMP SANITARY - PLAN & PROFILE
EAGLE TRACE: PHASE 5
M:\DESIGN\Projects\13763\CAD\Sewers\13763SWR-PipeNetwork.dwg



13763
U-3



MARK	REVISION	DATE	BY
13763	U-4	4/27/2023 12:52 PM	Scale: 1" = 40'

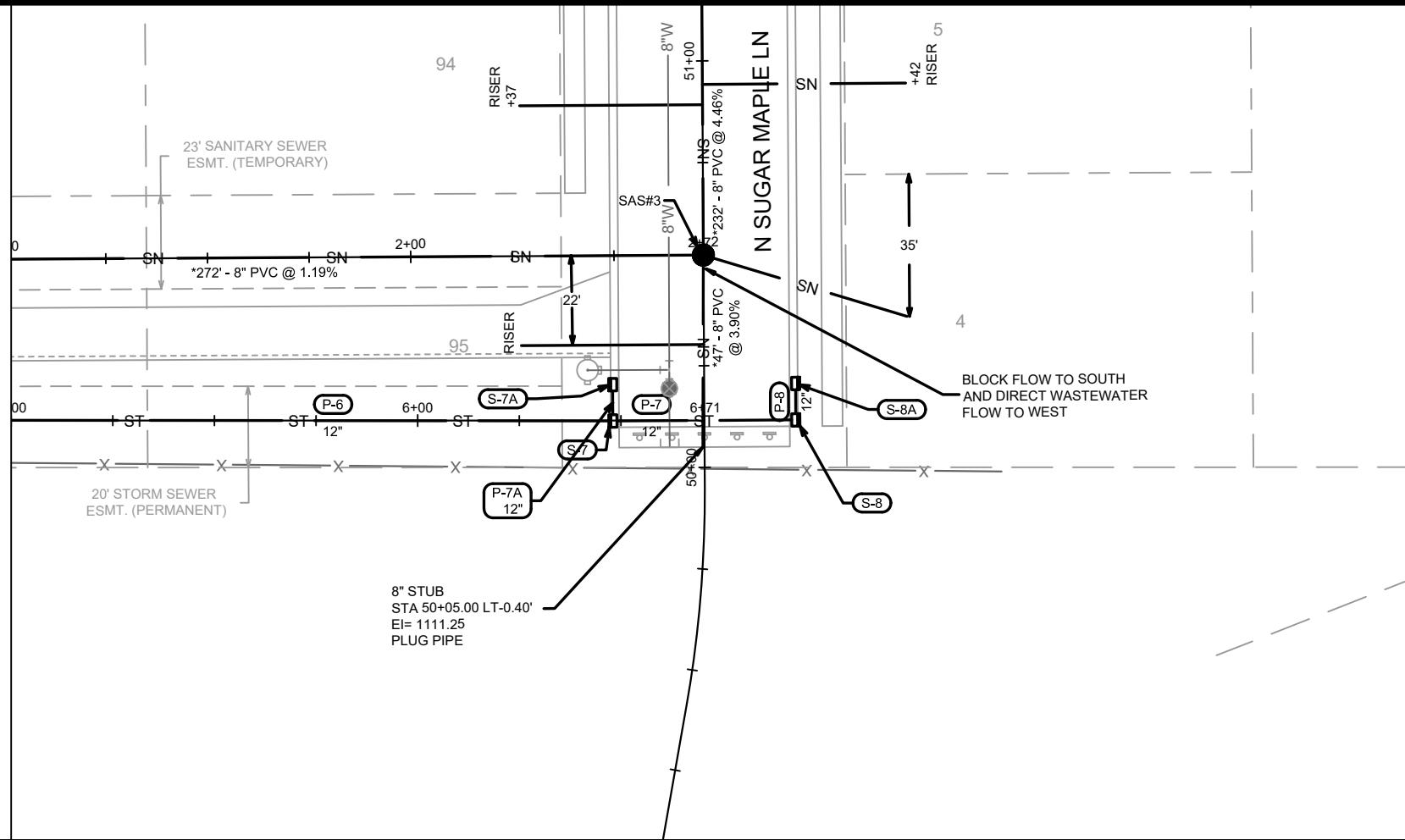
13763
 MADISON, WI
 CONTRACT NO: 9066

STORM EASEMENT - PLAN & PROFILE
 EAGLE TRACE: PHASE 5
 M:\DESIGN\Projects\13763\CAD\Sewers\13763SWR-PipeNetwork.dwg

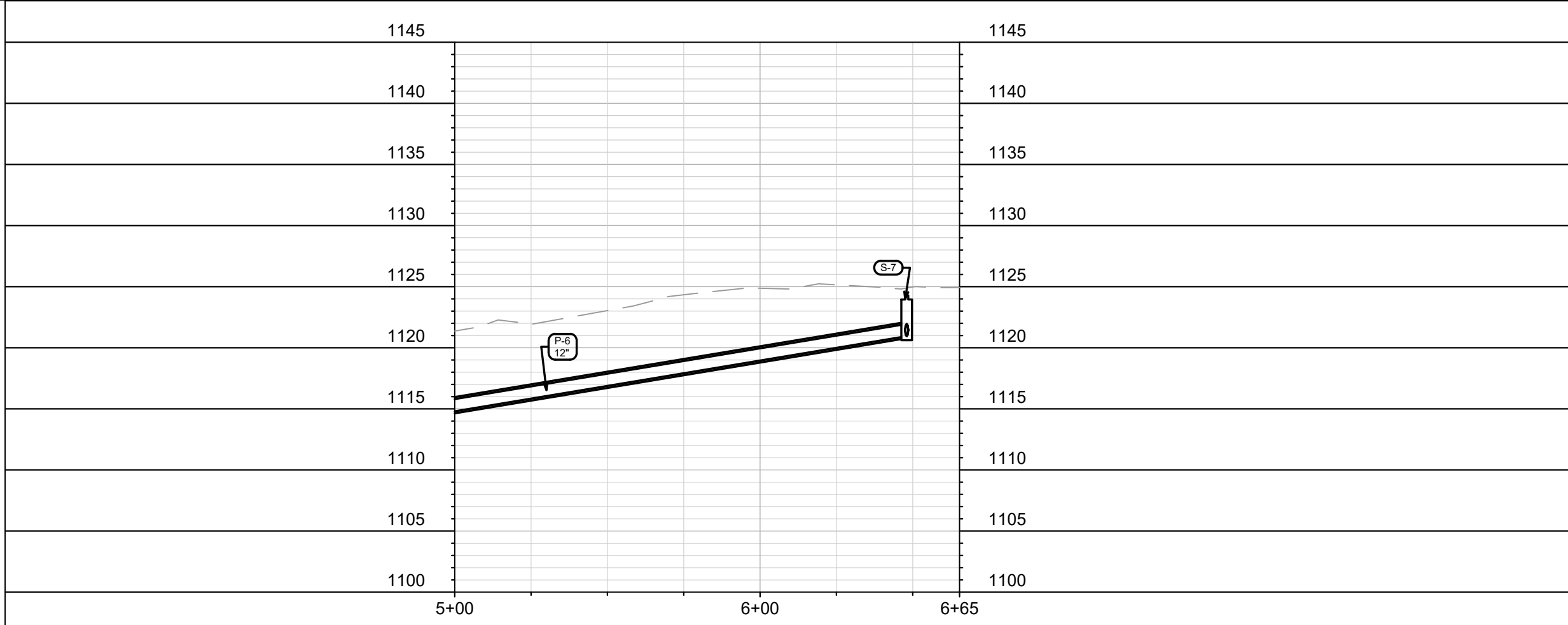


13763
 U-4

MATCH LINE 5+00.00



LANDS



MARK	REVISION	DATE	BY

13763
MADISON, WI
9066
CONTRACT NO:

STORM EASEMENT - PLAN & PROFILE
EAGLE TRACE: PHASE 5
M:\DESIGN\Projects\13763\CAD\Sewers\13763SWR-PipeNetwork.dwg



13763
U-5

SANITARY SEWER SCHEDULE

EAGLE TRACE PHASE 5

SHEET NO.

PROJECT NO. 13763

U-SAN

SANITARY SEWER SCHEDULE

CITY OF MADISON

PROPOSED SANITARY STRUCTURES

SAS NO.	STATION	LOCATION (OFFSET)	TOP OF CASTING	E.I.	DEPTH (FT)	NOTES
---------	---------	-------------------	----------------	------	------------	-------

LUSHWOODS PLACE

SAS#1	502+34.00	CL	1116.91	1109.53	7.38	-
SAS#2	502+05.00	CL	1116.11	1109.75	6.36	-

N SUGAR MAPLE LANE

SAS#3	50+52.24	CL	1126.90	1113.08	13.82	-
SAS#4	52+84.00	CL	1134.02	1123.52	10.50	-

PROPOSED SANITARY PIPES

FROM (DNSTM)	TO (UPSTM)	DWNSTRM E.I.	UPSTRM E.I.	PLAN LGTH (FT)	SLOPE (%)	PIPE SIZE	PVC TYPE	NOTES
--------------	------------	--------------	-------------	----------------	-----------	-----------	----------	-------

LUSHWOODS PLACE

EX 1452-014	SAS#1	1109.20	1109.53	82	0.40%	8"	SDR-35	-
SAS#1	SAS#2	1109.63	1109.75	29	0.41%	8"	SDR-35	-
8" STUB	SAS#2	1106.11	1109.75	46	7.92%	8"	SDR-35	-

N SUGAR MAPLE LANE

SAS#2	SAS#3	1109.85	1113.08	272	1.19%	8"	SDR-26	-
SAS#3	SAS#4	1113.18	1123.52	232	4.46%	8"	SDR-26	-
8" STUB	SAS#3	1111.25	1113.08	47	3.90%	8"	SDR-26	-

NOTES:

- ALL STRUCTURES SHALL BE SUBMITTED TO CITY ENGINEERING FOR APPROVAL. CONTACT ELIA E ACOSTA OF CITY ENGINEERING AT (608) 266-4096 FOR PRECAST APPROVALS, FAX SHOP DRAWINGS TO (608)264-9275, OR EMAIL SHOP DRAWINGS TO EACOSTA@CITYOFMADISON.COM.

STORM SEWER SCHEDULE

EAGLE TRACE PHASE 5	SHEET NO.
PROJECT NO. 13763	U-STM
STORM SEWER SCHEDULE	
CITY OF MADISON	

PROPOSED STORM STRUCTURES

STRUC. NO.	STATION	LOCATION (OFFSET)	TYPE	TOP OF CASTING	E.I.	DEPTH	NOTES
------------	---------	-------------------	------	----------------	------	-------	-------

STORM EASEMENT

S-1	0+46.50	CL	18" RCP APRON END	-	1100.25	-	W/ GATE
S-2	1+35.08	CL	3X3 SAS	1107.11	1101.71	5.40	W/ R-1550
S-3	2+60.42	CL	3X3 SAS	1110.00	1103.97	6.03	W/ R-1550

LUSH WOODS PLACE

S-5	501+66.00	LT-13.50	3X3 SAS	1115.04	1110.44	4.60	W/ R-3067-7004-V
S-5A	501+75.00	LT-13.50	H INLET	1115.36	1111.76	3.60	W/ R-3067-7004-V
S-6	501+66.00	RT-13.50	3X3 SAS	1115.04	1110.64	4.40	W/ R-3067-7004-V
S-6A	501+75.00	RT-13.50	H INLET	1115.35	1111.76	3.59	W/ R-3067-7004-V

N SUGAR MAPLE LN

S-7	50+11.55	LT-22.50	H INLET	1124.75	1120.95	3.80	W/ R-3067-7004-V
S-7A	50+20.50	LT-22.50	H INLET	1125.24	1121.64	3.60	W/ R-3067-7004-V
S-8	50+11.55	RT-22.50	H INLET	1124.75	1121.35	3.40	W/ R-3067-7004-V
S-8A	50+20.50	RT-22.50	H INLET	1125.24	1121.64	3.60	W/ R-3067-7004-V

PROPOSED STORM PIPES

PIPE NO.	FROM (DNSTM)	TO (UPSTM)	DISCH. E.I.	INLET E.I.	PLAN (PAY) LGTH (FT)	PIPE LGTH (FT)	SLOPE (%)	PIPE SIZE	TYPE	NOTES
----------	--------------	------------	-------------	------------	----------------------	----------------	-----------	-----------	------	-------

P-1	S-1	S-2	1100.25	1101.71	89	87	1.68%	18"	TYPE II	-
P-2	S-2	S-3	1101.71	1103.97	125	123	1.84%	18"	TYPE II	-
P-3	S-3	S-5	1103.97	1110.44	125	122	5.30%	18"	TYPE II	-
P-5	S-5	S-6	1110.44	1110.64	27	24	0.83%	18"	TYPE I	-
P-5A	S-5	S-5A	1110.94	1111.76	9	6	13.67%	12"	TYPE II	-
P-6	S-6	S-7	1111.14	1120.95	236	234	4.19%	12"	TYPE II	-
P-6A	S-6	S-6A	1111.14	1111.76	9	6	10.33%	12"	TYPE II	-
P-7	S-7	S-8	1120.95	1121.35	45	43	0.93%	12"	TYPE I	-
P-7A	S-7	S-7A	1120.95	1121.64	9	6	11.50%	12"	TYPE II	-
P-8	S-8	S-8A	1121.35	1121.64	9	6	4.83%	12"	TYPE II	-

STANDARD NOTES:

-PLAN LENGTH (PAY LENGTH) IS FROM CENTER OF STRUCTURE TO CENTER OF STRUCTURE. PIPE LENGTH IS ACTUAL LENGTH OF PIPE FROM STRUCTURE WALL TO STRUCTURE WALL. SLOPE CALCULATED USING PIPE LENGTH.

- ABBREVIATIONS: AE = APRON ENDWALL; RCP = REINFORCED CONCRETE PIPE; HERCP = HORIZONTAL ELLIPTICAL REINFORCED CONCRETE PIPE; DNA = DOES NOT APPLY; SAS = SEWER ACCESS STRUCTURE; LP = LOW POINT INLET STRUCTURE; FP = FIELD Poured STRUCTURE; TR = TOP OF CONCRETE ROOF; NCM = NO CROWN MATCH FOR PIPES; UD = UNDERDRAIN

- APPROXIMATE DISCHARGE E.I. GIVEN, ADJUST E.I. AND PIPE SLOPE IN THE FIELD.

- TOP OF CASTING GRADE GIVEN IS THE TOP OF CURB FOR INLET STRUCTURES AND THE FLOWLINE OF THE CLOSED CASTING FOR SAS's.

- ALL REINFORCED CONCRETE PIPES TO BE CLASS III UNLESS OTHERWISE NOTED.

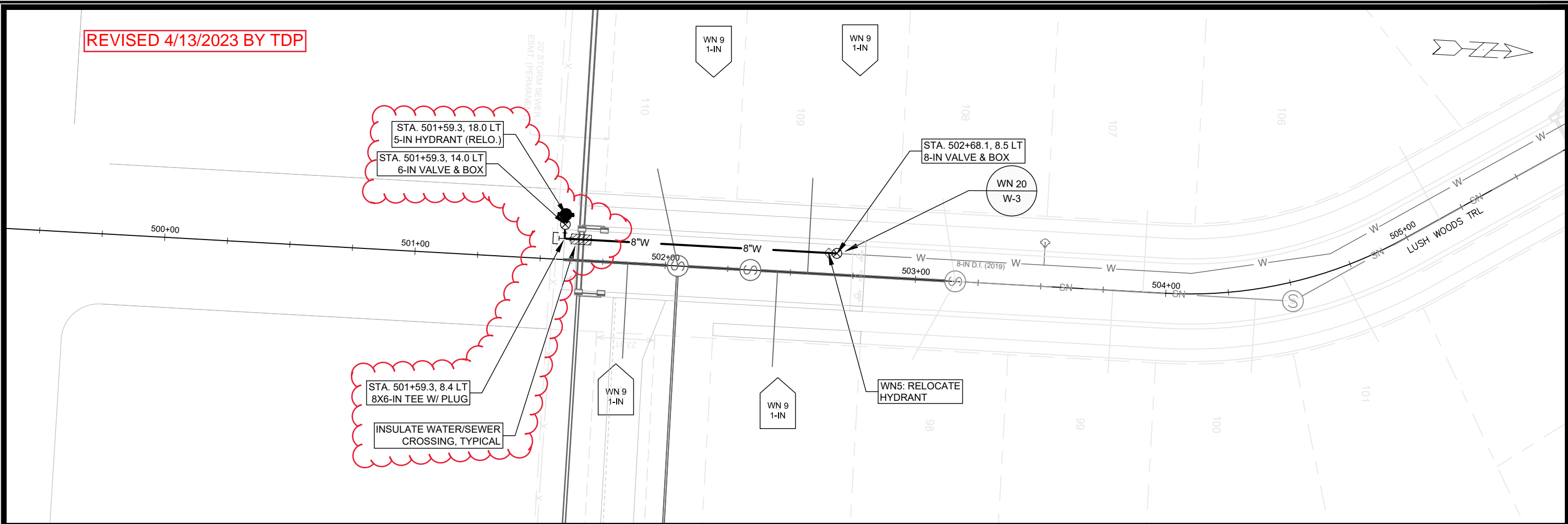
- SURVEYOR TO CONFIRM THAT ALL INLET STATION / OFFSETS LINE UP WITH PROPOSED CURB AND GUTTER.

-ALL FIELD Poured SAS STORM STRUCTURES SHALL BE CONSTRUCTED IN ACCORDANCE WITH STANDARD DETAIL DRAWING 5.7.3. ALL PRECAST SAS STORM STRUCTURES SHALL BE CONSTRUCTED IN ACCORDANCE WITH STANDARD DETAIL DRAWING 5.7.5.

- ALL STRUCTURES CALLED OUT AS FIELD Poured SHALL BE FIELD Poured. ALL OTHER STRUCTURES (NOT INDICATED AS FIELD Poured) SHALL BE SUBMITTED TO CITY ENGINEERING FOR APPROVAL IF PRECAST STRUCTURES ARE PREFERRED. CONTACT ELIA E ACOSTA OF CITY ENGINEERING AT (608) 266-4096 FOR STORM SEWER PRECAST APPROVALS, FAX SHOP DRAWINGS TO (608)264-9275, OR EMAIL SHOP DRAWINGS TO EACOSTA@CITYOFMADISON.COM.

-FOR SWM PRECAST APPROVALS CONTACT PHIL GAEBLER AT (608) 266-4059 OR EMAIL SWM SHOP DRAWINGS TO PGAEBLER@CITYOFMADISON.COM

REVISED 4/13/2023 BY TDP



- GENERAL REQUIREMENTS - WATER MAIN PROFILES:**
- MAINTAIN 6-FT BURY DEPTH UNLESS OTHERWISE INDICATED.
 - INSULATE ALL STORM X-INGS AND AREAS WITH < 5-FT COVER.
 - WM X-INGS OVER SEWERS REQUIRE 6-IN CLEARANCE (MIN.)
 - WM X-INGS UNDER SEWERS REQUIRE 18-IN CLEARANCE (MIN.)

T.O.P. 1109.02
 T.O.P. 1109.58
 T.O.P. 1110.48
 T.O.P. 1111.18
 502+00

SCALE: 1" = 40'
 DESIGNED BY: KBM
 MADISON WATER UTILITY
 119 E OLIN AVE, MADISON, WI 53713
 PRINTING DATE: 1/20/22

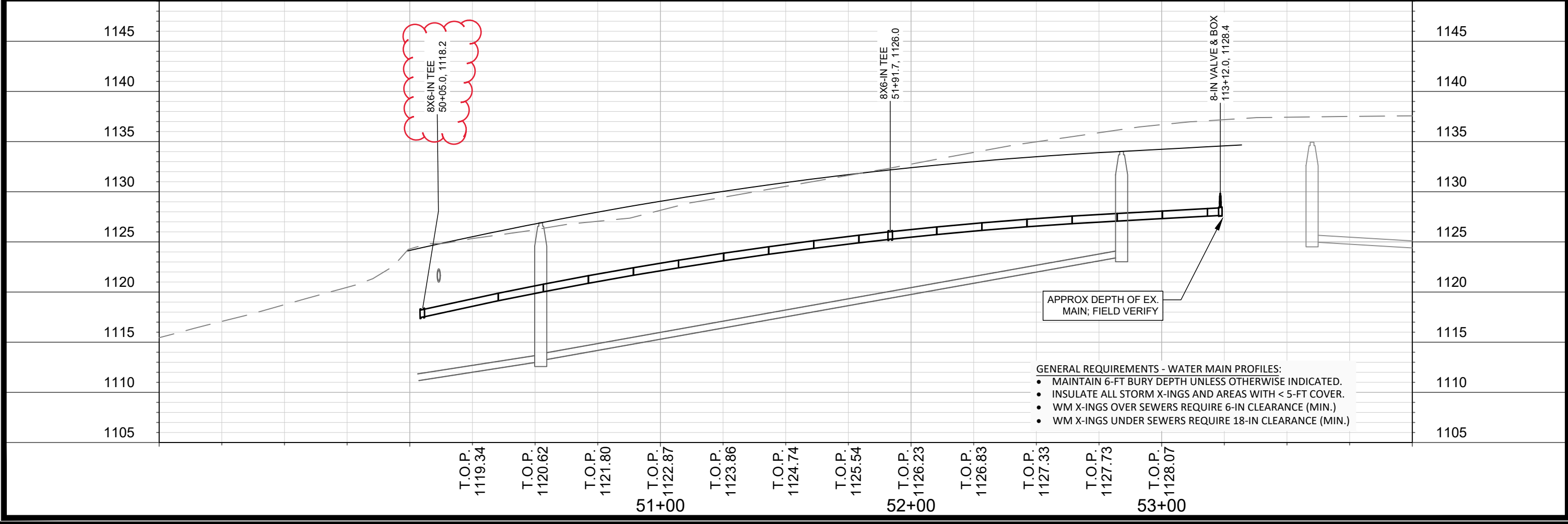
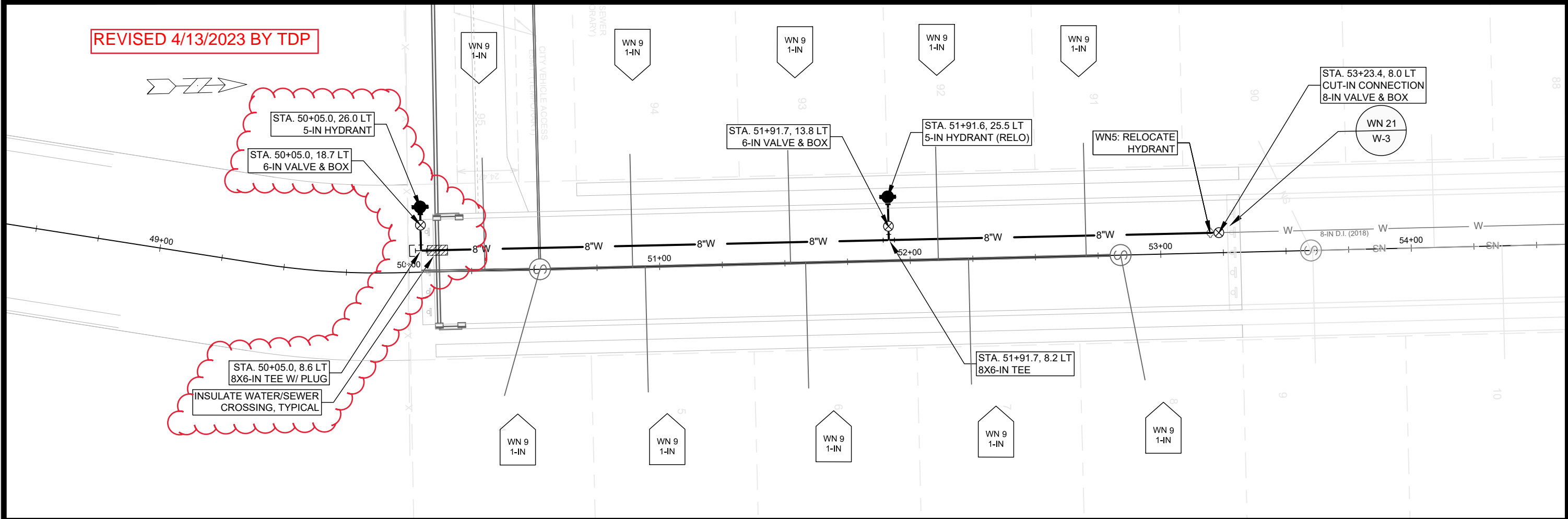
CONTRACT NO: 9066

EAGLE TRACE: PHASE 5
 WATER PLAN & PROFILE LUSH WOODS TRL
 CITY OF MADISON, WISCONSIN



13763
 W-1

REVISED 4/13/2023 BY TDP



- GENERAL REQUIREMENTS - WATER MAIN PROFILES:**
- MAINTAIN 6-FT BURY DEPTH UNLESS OTHERWISE INDICATED.
 - INSULATE ALL STORM X-INGS AND AREAS WITH < 5-FT COVER.
 - WM X-INGS OVER SEWERS REQUIRE 6-IN CLEARANCE (MIN.)
 - WM X-INGS UNDER SEWERS REQUIRE 18-IN CLEARANCE (MIN.)

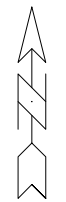
SCALE: 1" = 40'
 DESIGNED BY: KBM
 MADISON WATER UTILITY
 119 E OLIN AVE, MADISON, WI 53713
 PRINTING DATE: 4/13/23

CONTRACT NO: 9066

EAGLE TRACE: PHASE 5
 WATER PLAN & PROFILE N. SUGAR MAPLE LN
 CITY OF MADISON, WISCONSIN



13763
 W-2



WN-20
 CONNECTION TO EX. 8-IN AT LUSH WOODS PL
 ISOLATION VALVES:
 - V-7734 (8-IN)

WN-21
 CONNECTION TO EX. 8-IN AT N. SUGAR MAPLE LN
 ISOLATION VALVES:
 - V-7241 (8-IN)

SCHWEWE RD

SCHWEWE RD

DISCLAIMER NOTE:
 THE WATER IMPACT PLAN IS PROVIDED FOR REFERENCE PURPOSES
 TO AID PLANNING CONNECTION POINT ISOLATION AND PREPARING
 NOTIFICATION LISTS DURING PLANNED OUTAGES. REQUEST ANY
 ALTERNATIVE CONNECTION METHODS IN WRITING, PER SPECS.

SCALE: 1"=100'
 DESIGNED BY: KBM
 MADISON WATER UTILITY
 119 E OLIN AVE, MADISON, WI 53713
 PRINTING DATE: 01/19/2022

CONTRACT NO: 9066

EAGLE TRACE PHASE 5
 WATER IMPACT PLAN
CITY OF MADISON, WISCONSIN



13763
 W-3

M:\DESIGN\PROJECTS\13763\CAD\WATER\13763_WU_IMPACT\PLANE15.DWG



CONSTRUCTION NOTES:

- | | |
|---|---|
| <ol style="list-style-type: none"> CONSTRUCT NEW WATER MAIN 6.0' BELOW FINISHED GRADE, UNLESS OTHERWISE NOTED. INSULATE MAIN WITH POLYSTYRENE BOARD AT UTILITY CROSSINGS OR OTHER AREAS IDENTIFIED BY ENGINEER AS HAVING INADEQUATE COVER. VERIFY SIZE OF EXISTING WATER SERVICES AND RECONNECT SERVICES AS INDICATED. MINIMIZE DISRUPTION OF SERVICE TO CUSTOMERS. NOTIFY PER CONTRACT REQUIREMENTS OF ANY PLANNED WATER OUTAGE. THE EXISTING UTILITIES SHOWN ON THIS REPRESENT THE BEST INFORMATION AVAILABLE TO THE WATER UTILITY AT THE TIME OF PLAN REPARATION. CONTRACTOR IS RESPONSIBLE OR HAVING EACH UTILITY LOCATED PRIOR TO COMMENCING WORK. | <p>WN1 REPLACE THE EXISTING LEAD SERVICE WITH A NEW COPPER SERVICE.</p> <p>WN-2 EXTEND AND RECONNECT THE EXISTING COPPER SERVICE TO THE NEW WATER MAIN.</p> <p>WN-3 EXISTING SERVICE TO BE ABANDONED WHEN THE WATER MAIN IS CUT OFF.</p> <p>WN-4 DISCONNECT FROM THE OLD WATER MAIN AND RECONNECT THE EXISTING COPPER WATER SERVICE LATERAL TO THE NEW WATER MAIN.</p> <p>WN-5 RELOCATE THE EXISTING FIRE HYDRANT.</p> <p>WN-6 ABANDON WATER VALVE ACCESS STRUCTURE.</p> <p>WN-7 FURNISH AND INSTALL THE NEW TOP SECTION FOR THE WATER ACCESS STRUCTURE.</p> <p>WN-8 ABANDON THE VALVE BOX.</p> <p>WN-9 FURNISH THE DITCH, COMPACTION, AND ALL MATERIALS AND LABOR FOR THE INSTALLATION OF NEW SERVICE LATERAL.</p> <p>WN-10 REMOVE AND SALVAGE EXISTING HYDRANT</p> <p>WN-11 REPLACE THE EXISTING COPPER SERVICE WITH A COPPER SERVICE</p> <p>WN-20+ SEE WATER IMPACT PLAN FOR CONNECTION POINT ISOLATION AND WATER SHUT-OFF NOTIFICATION INFORMATION.</p> |
|---|---|

WATER UTILITY ULO SCHEDULE				
ULO	UTILITY	STATION	OFFSET	SHEET

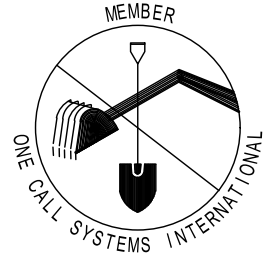
*ESTIMATE OF MATERIALS SUPPLIED BY CONTRACTOR:			
PAY_ITEM_ID	DESCRIPTION	QUANTITY	UNIT
70002	FURNISH AND INSTALL 6-INCH PIPE & FITTINGS	60	LNFT
70003	FURNISH AND INSTALL 8-INCH PIPE & FITTINGS	440	LNFT
70031	FURNISH AND INSTALL 6-INCH WATER VALVE	3	EACH
70032	FURNISH AND INSTALL 8-INCH WATER VALVE	2	EACH
70040	FURNISH AND INSTALL AND SALVAGE HYDRANT	1	EACH
70050	FURNISH AND INSTALL 1-INCH SERVICE LATERALS	14	EACH
70101	FURNISH AND INSTALL STYROFOAM	2	EACH
71014	8-IN MJ PLLUG	2	EACH
71159	8X6-IN REDUCER	2	EACH
71210	8X6-IN TEE	3	EACH
*ESTIMATE OF MATERIALS SUPPLIED BY WATER UTILITY:			
N/A			
*ESTIMATE OF MATERIALS SALVAGED:			
70040	SALVAGE & RELOCATE EXISTING HYDRANT	2	EACH

* ESTIMATE OF MATERIALS IS FOR INFORMATION ONLY. ENGINEER DOES NOT GUARANTEE ACCURACY OF MATERIAL TAKE-OFF.

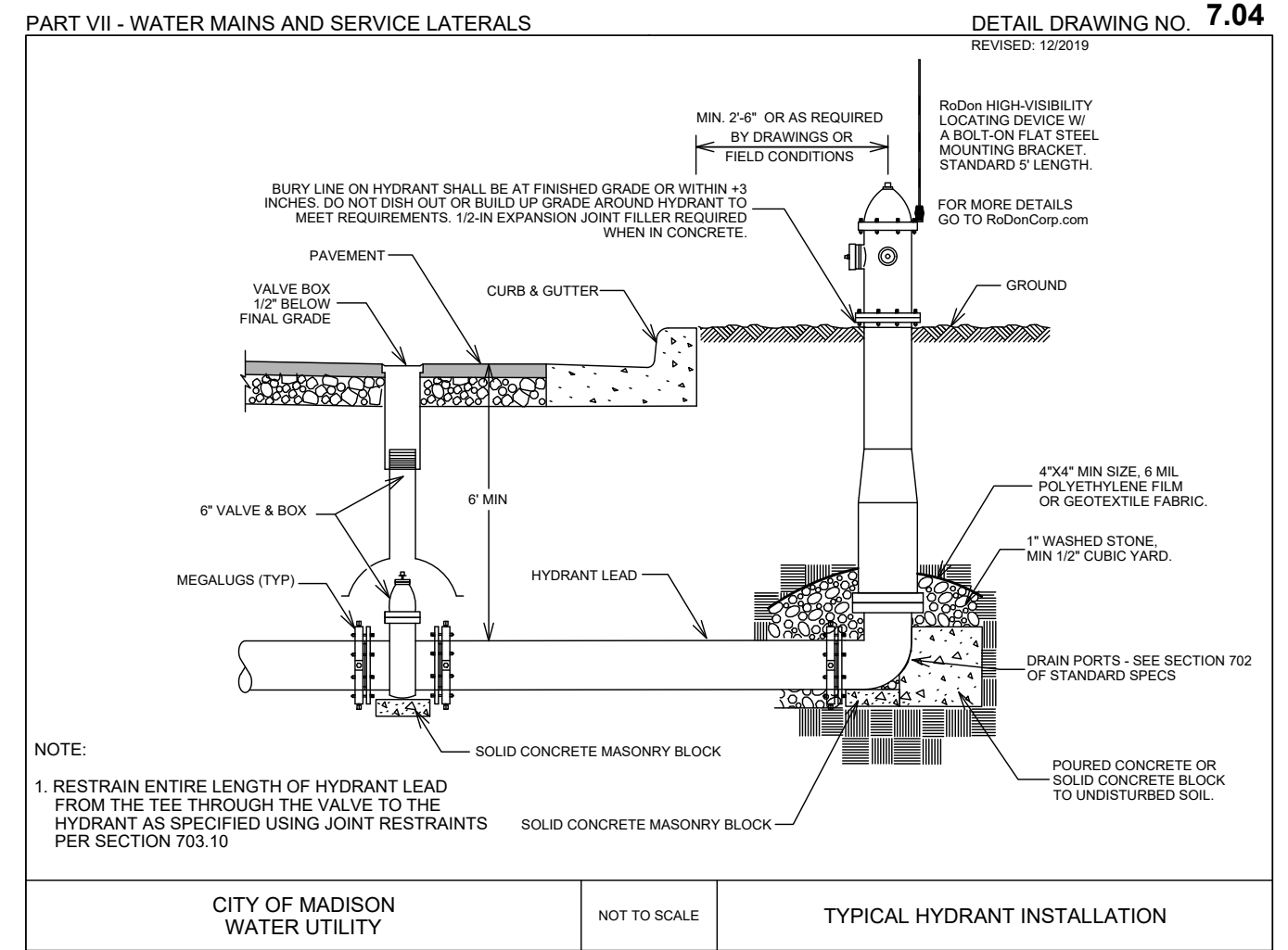
TO OBTAIN LOCATION OF PARTICIPANTS' UNDERGROUND FACILITIES BEFORE YOU DIG IN WISCONSIN

CALL DIGGERS HOTLINE TOLL FREE
811 OR 1-800-242-8511
FAX-A-LOCATE 1-800-338-3860
TDD (FOR HEARING IMPAIRED) 1-800-542-2289

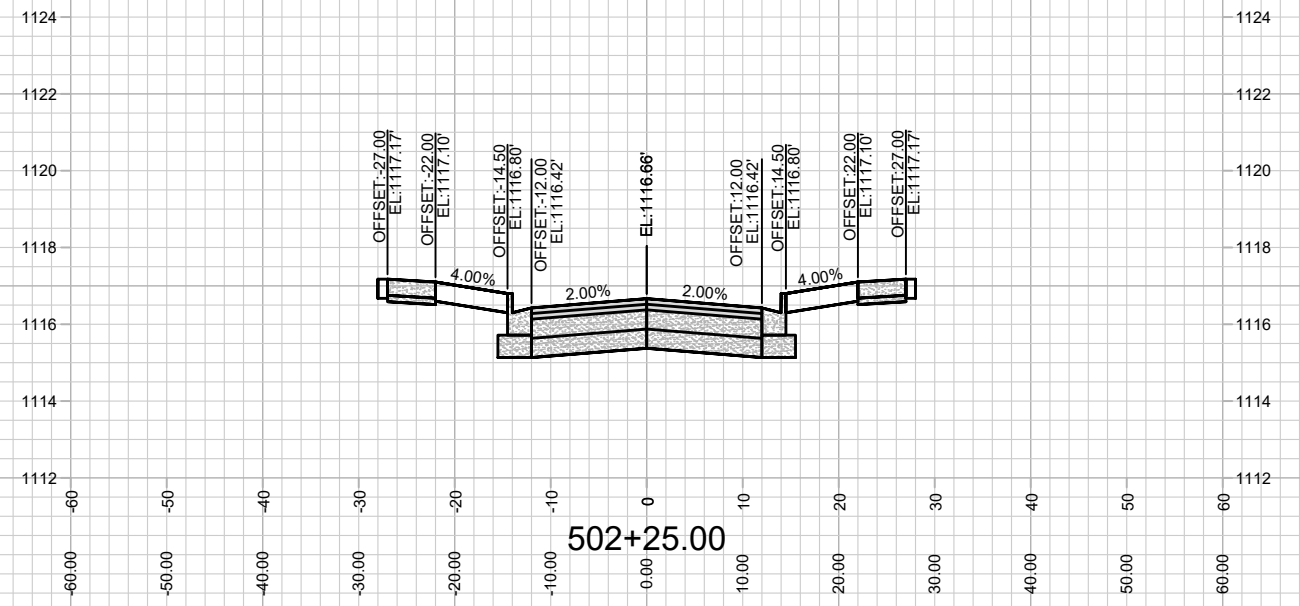
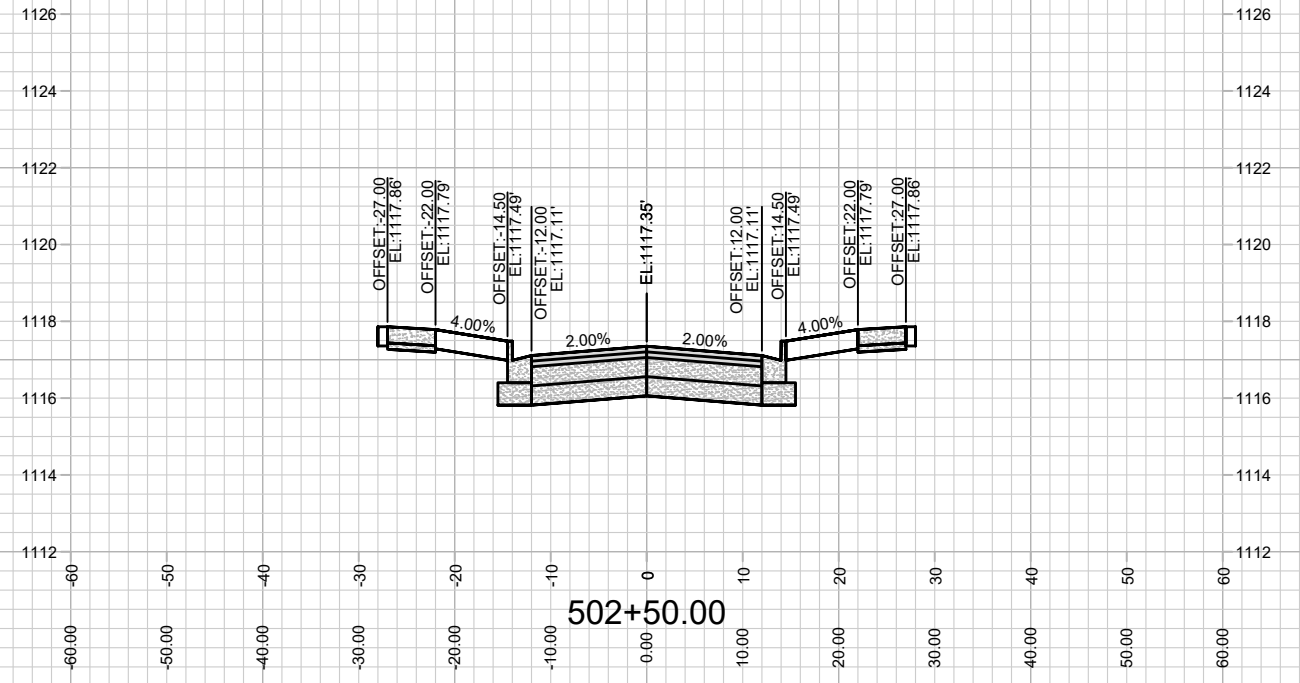
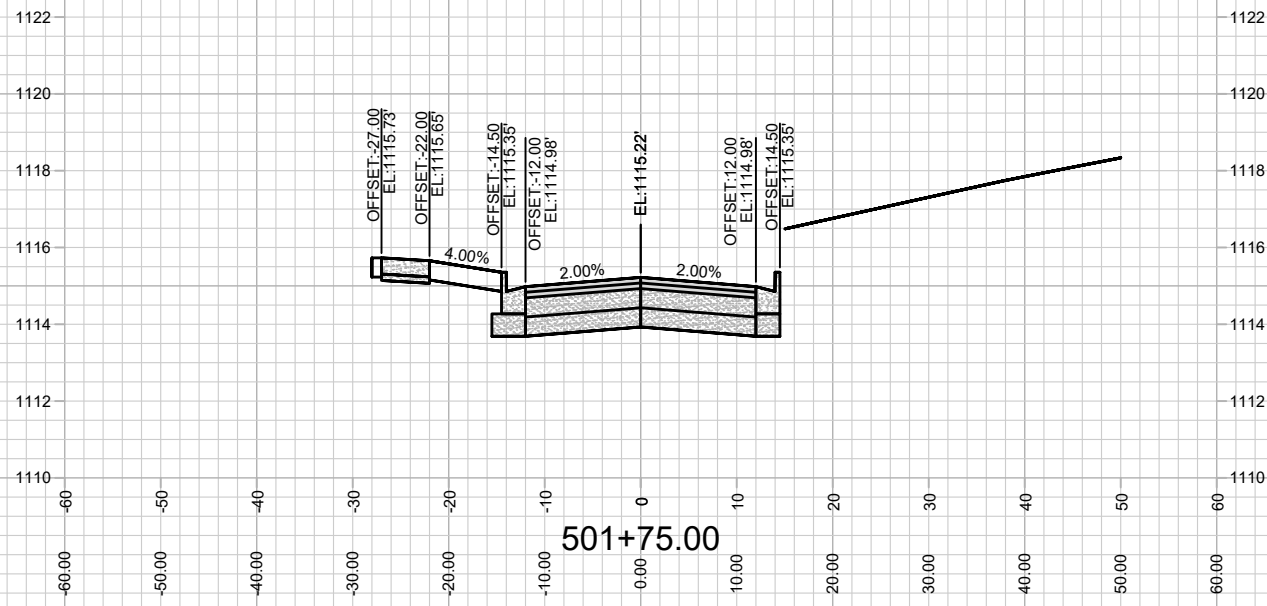
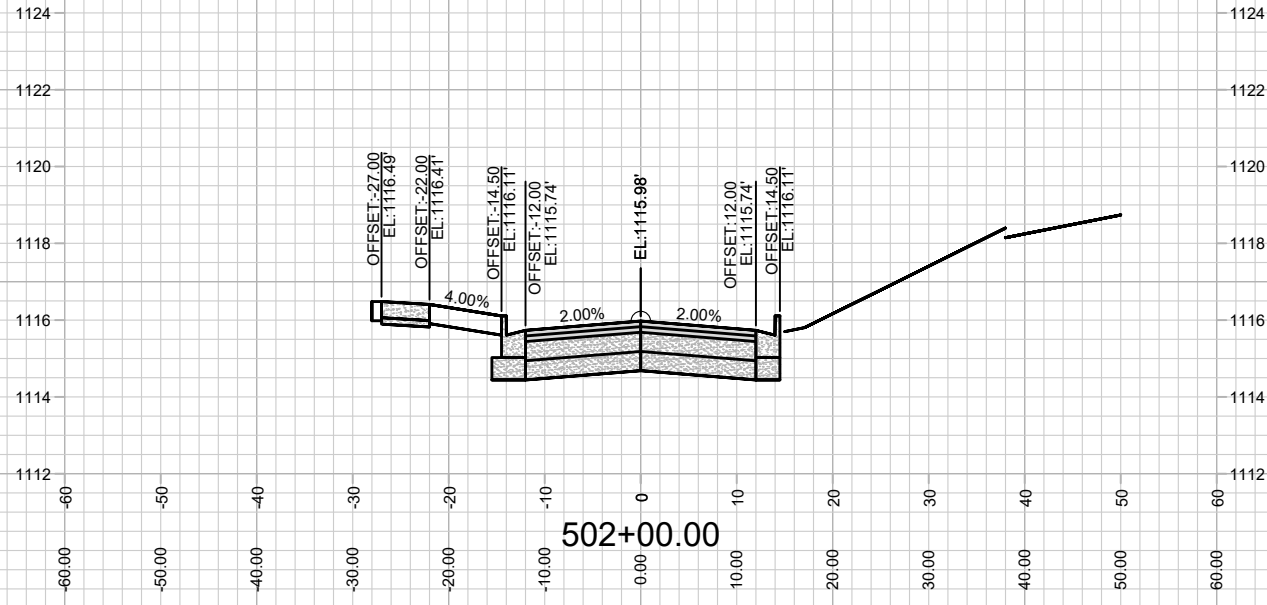
WIS. STATUTE 182.0175 (1974) REQUIRES MIN. OF 3 WORK DAYS NOTICE BEFORE YOU EXCAVATE.



DISCLAIMER NOTE: UTILITY LOCATIONS SHOWN ARE APPROXIMATE ONLY. IT SHALL BE THE CONTRACTOR'S RESPONSIBILITY TO DETERMINE THE EXACT HORIZONTAL AND VERTICAL LOCATION OF ALL EXISTING UNDERGROUND AND OVERHEAD UTILITIES PRIOR TO COMMENCING WORK.



SCALE: N/A
 DESIGNED BY: TDP
 MADISON WATER UTILITY
 119 E OLIN AVE, MADISON, WI 53713
 PRINTING DATE: 4/13/23
 CONTRACT NO: 9066
 CITY OF MADISON, WISCONSIN
 EAGLE TRACE PHASE 5
 WATER ESTIMATE OF MATERIALS
 13763
 W-4
 M:\DESIGN\PROJECTS\13763\CAD\WATER\13763_WU-MA\MATERIALS_ET5.DWG

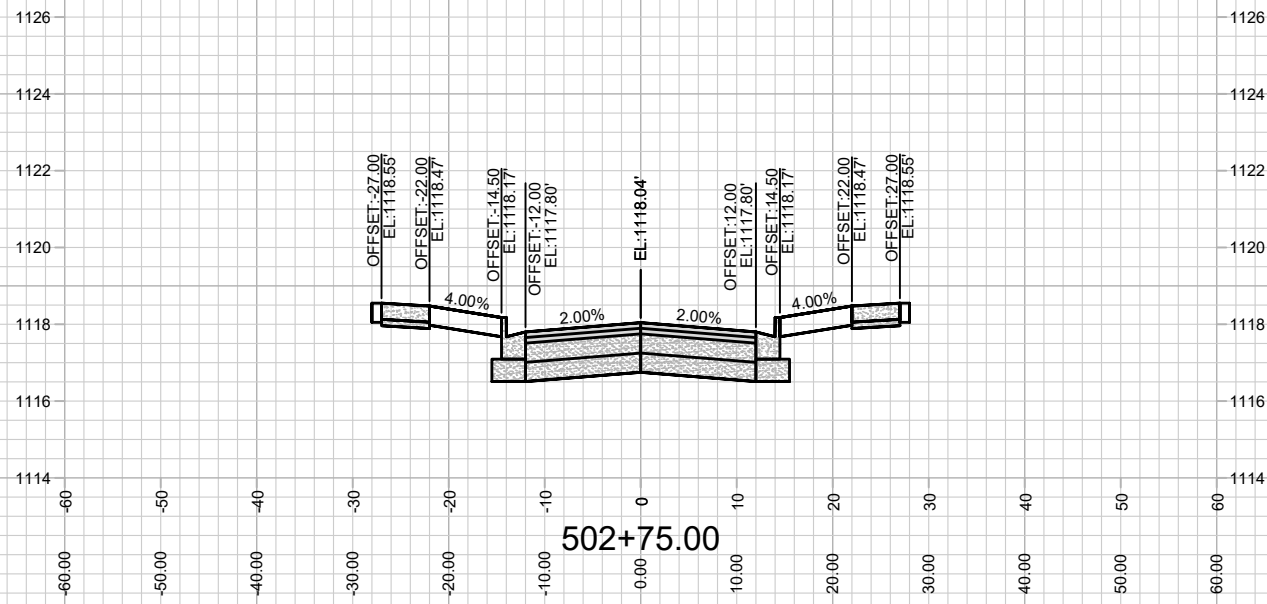


MARK	REVISION	DATE	BY

Designed By: ###
Date: 1/28/2022 1:43 PM
Scale: #####
13763
X-1

13763
MADISON, WI
CONTRACT NO: 9066

LUSH WOOD PLACE
EAGLE TRACE: PHASE 5
M:\DESIGN\Projects\13763\CAD\Streets\13763EN-Corridor.dwg



13763

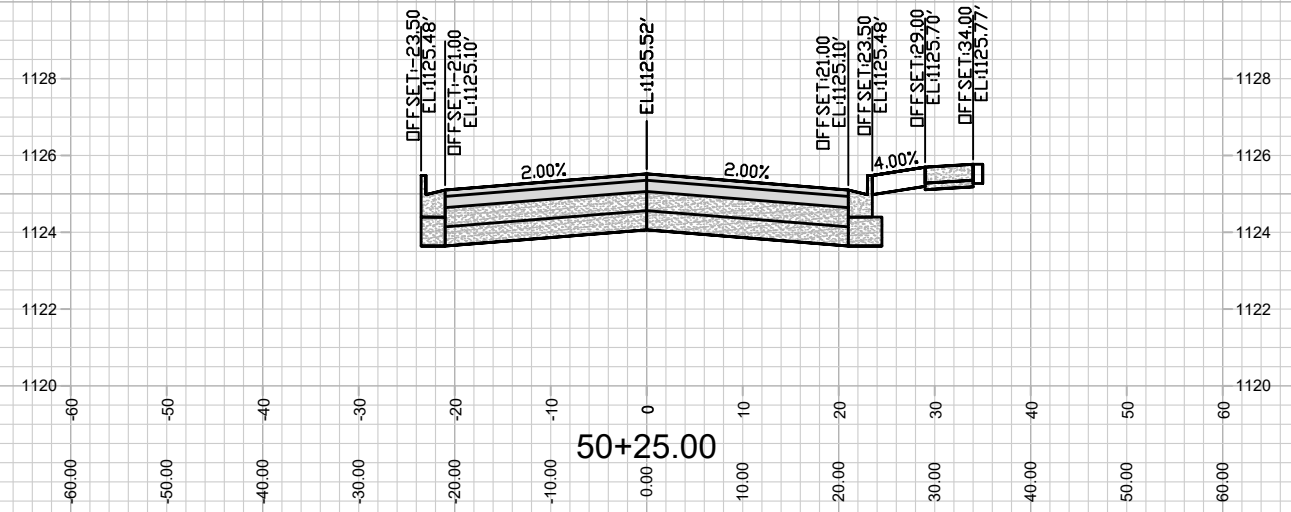
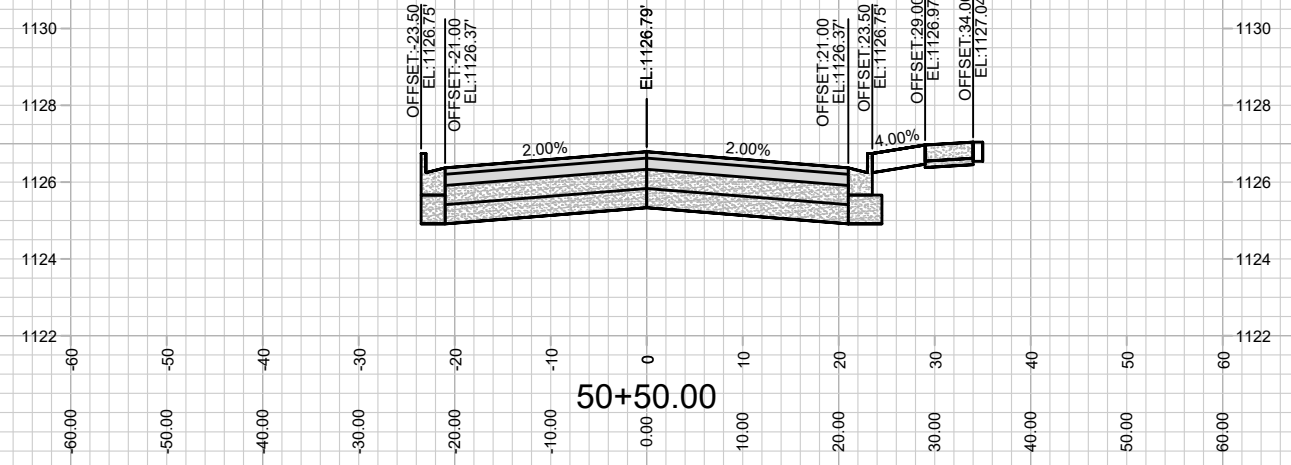
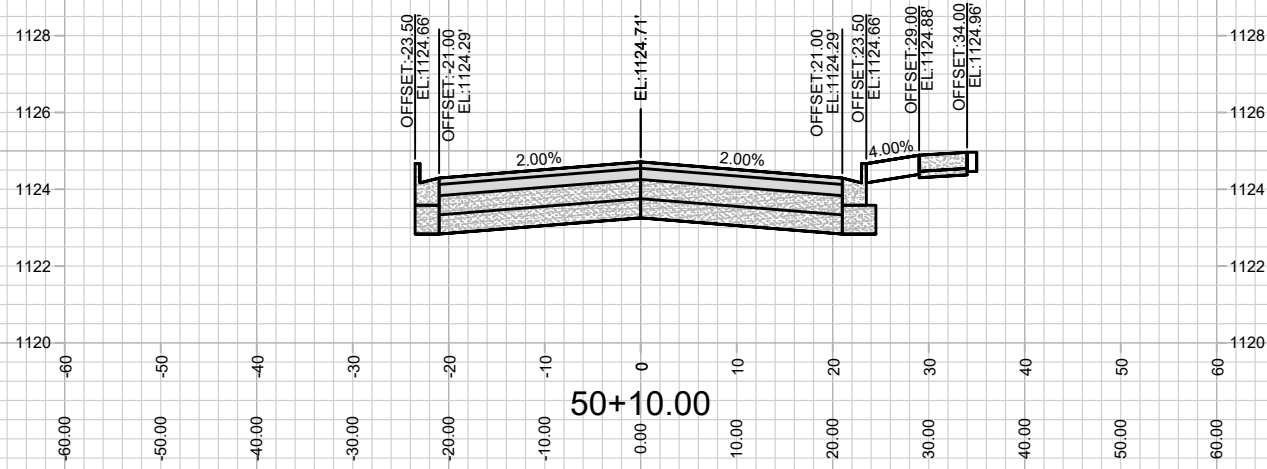
X-2

LUSH WOOD PLACE
EAGLE TRACE: PHASE 5

M:\DESIGN\Projects\13763\CAD\Streets\13763EN-Corridor.dwg

13763
MADISON, WI
CONTRACT NO: 9066

MARK	REVISION	DATE	BY
13763	Date: 1/28/2022 1:43 PM		
	Scale: #####		X-2



13763

X-3

N. SUGAR MAPLE LN

EAGLE TRACE: PHASE 5

M:\DESIGN\Projects\13763\CAD\Streets\13763EN-Corridor.dwg

13763

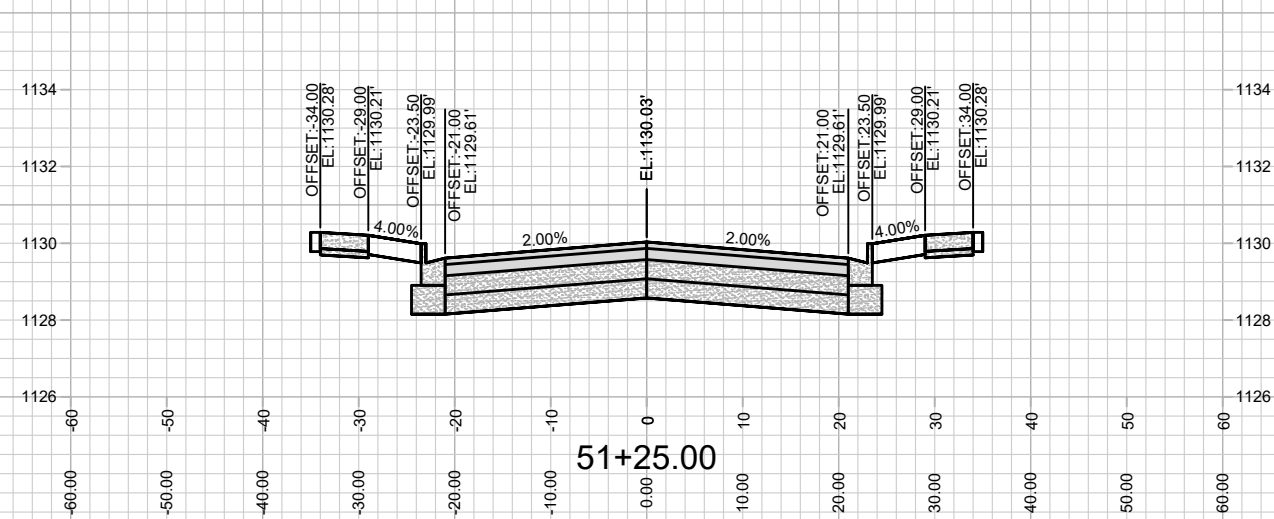
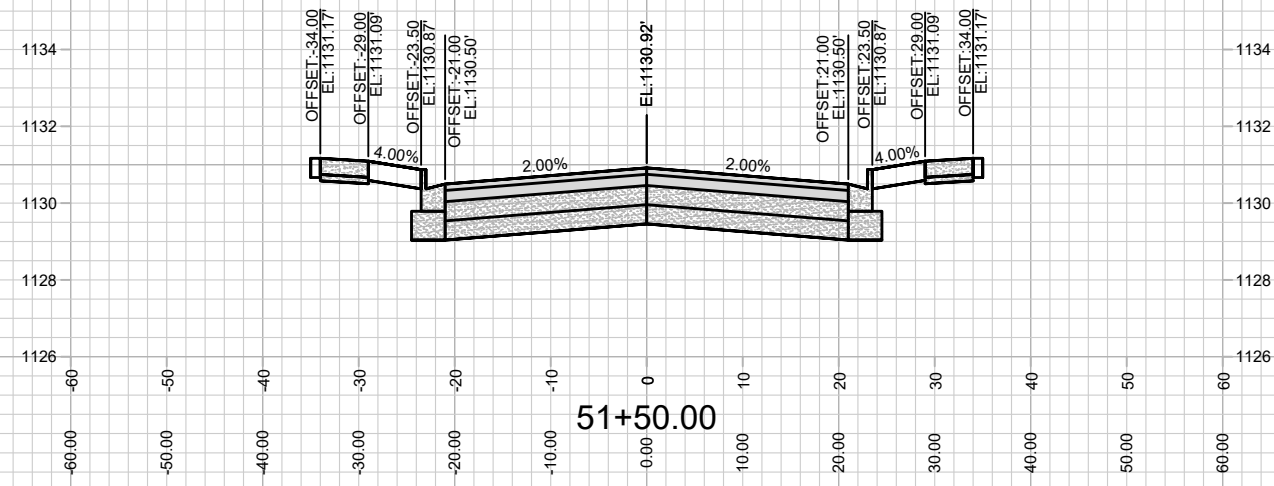
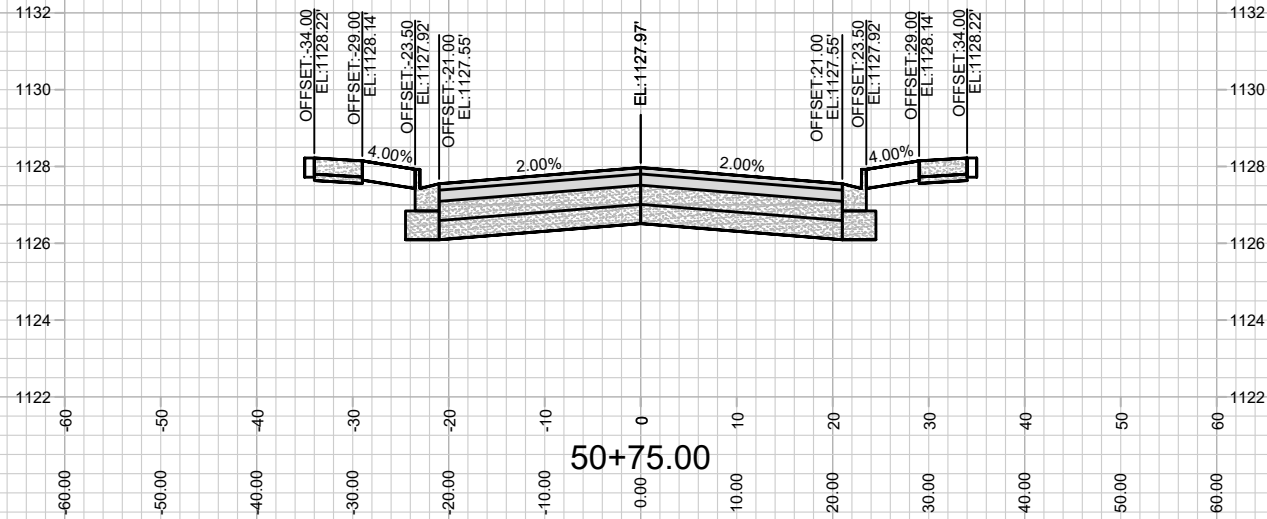
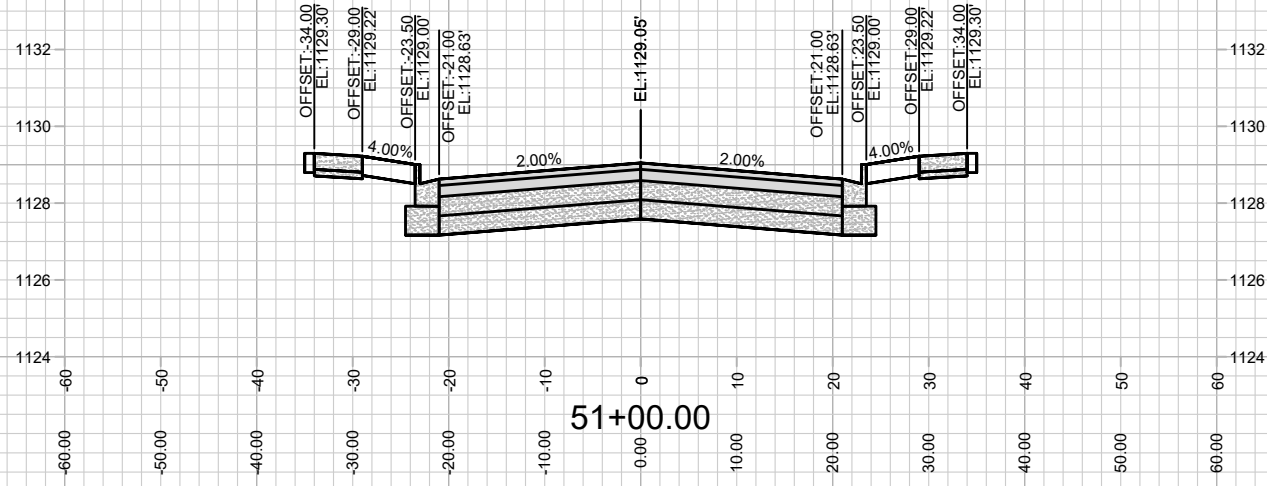
MADISON, WI

9066

CONTRACT NO:

MARK	REVISION	DATE	BY
13763 <td>1 <td>1/28/2022 <td>1:43 PM </td></td></td>	1 <td>1/28/2022 <td>1:43 PM </td></td>	1/28/2022 <td>1:43 PM </td>	1:43 PM
13763	2		
13763	3		
13763	4		
13763	5		
13763	6		
13763	7		
13763	8		
13763	9		
13763	10		

X-3



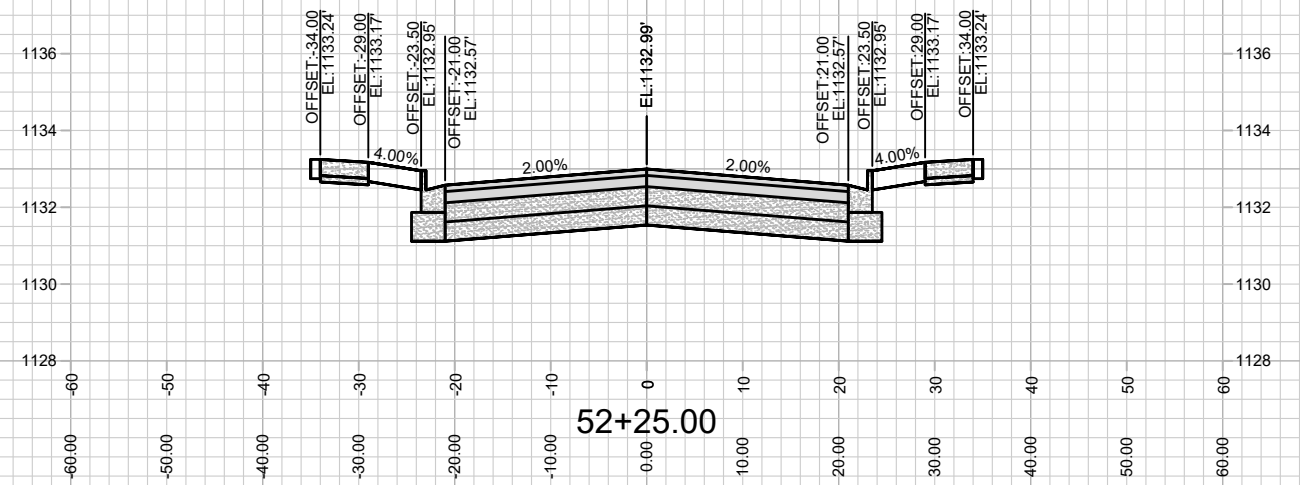
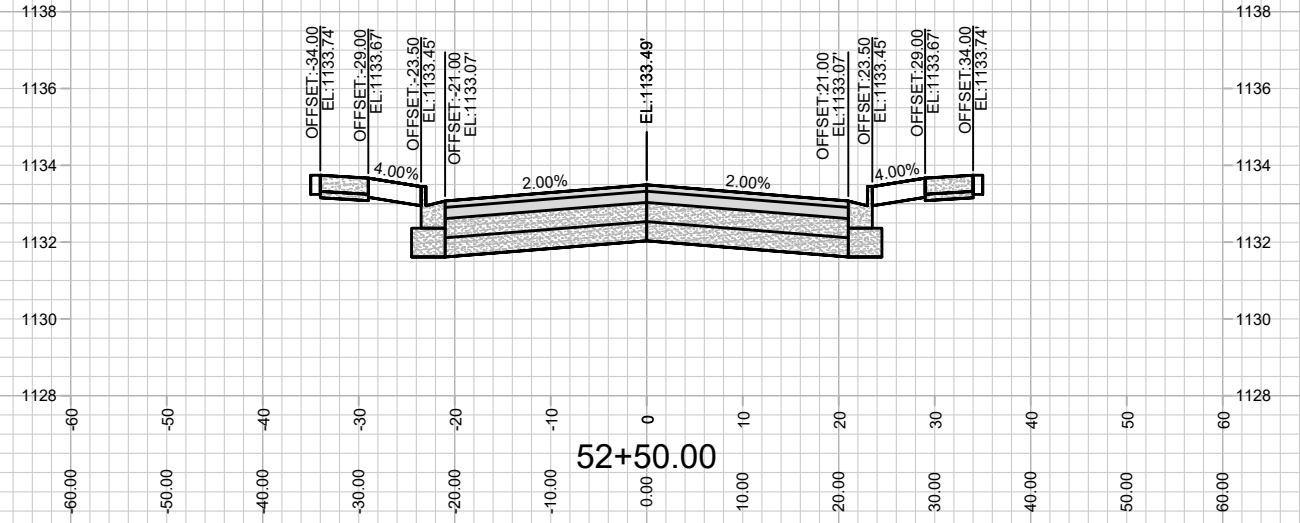
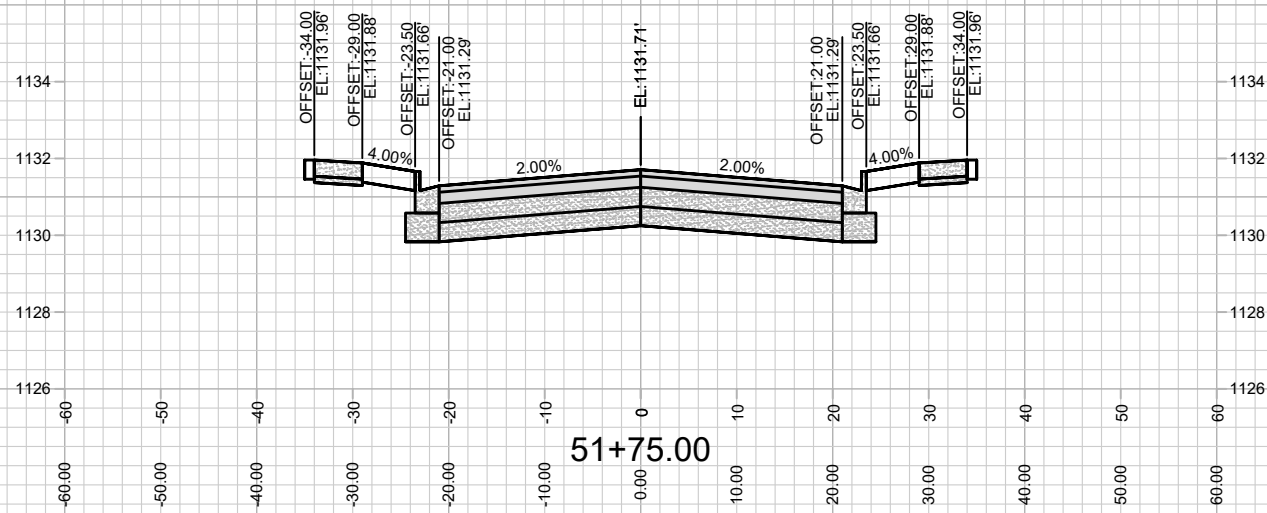
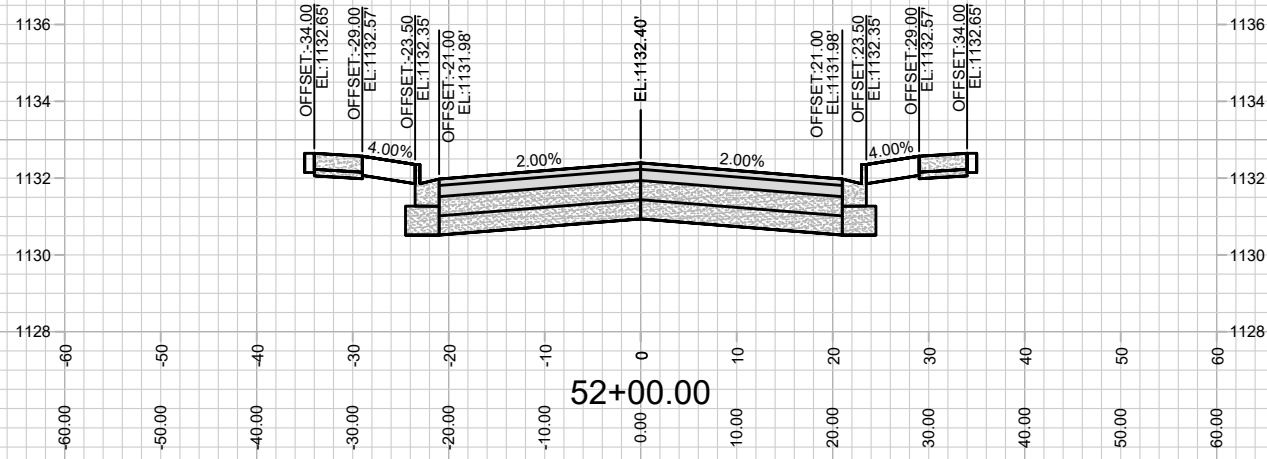
MARK	REVISION	DATE	BY
13763	13763	1/28/2022	X-4

13763
MADISON, WI
CONTRACT NO: 9066

N. SUGAR MAPLE LN
EAGLE TRACE: PHASE 5
M:\DESIGN\Projects\13763\CAD\Streets\13763EN-Corridor.dwg



13763
X-4



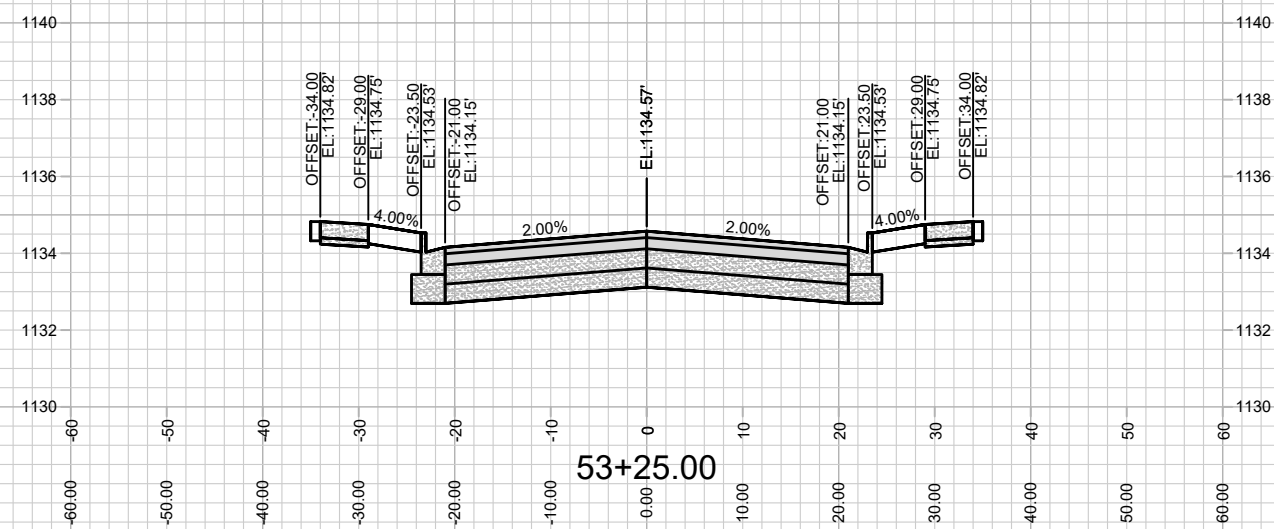
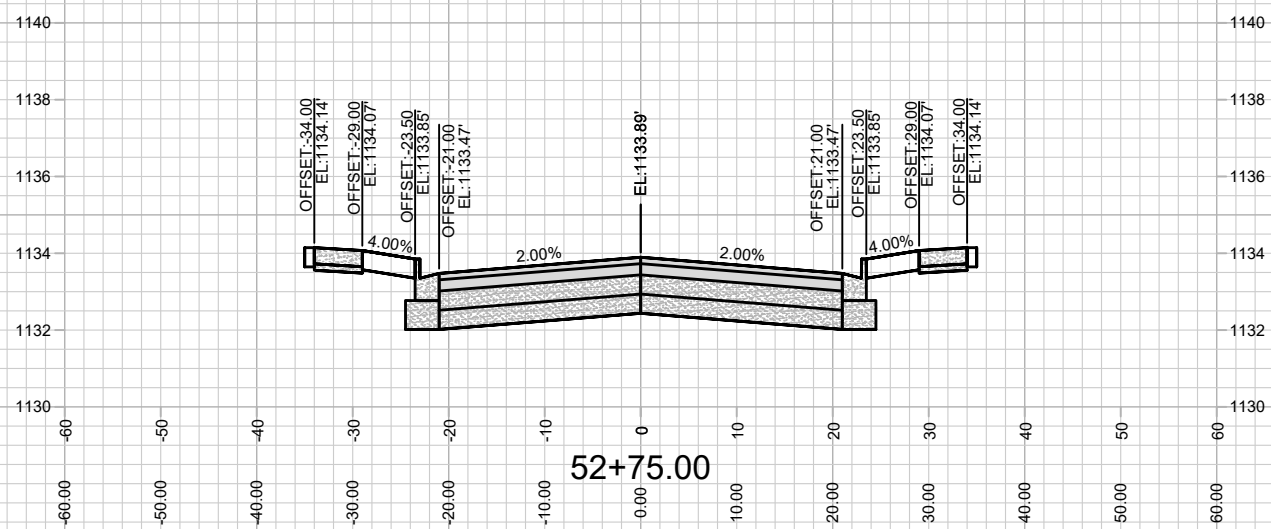
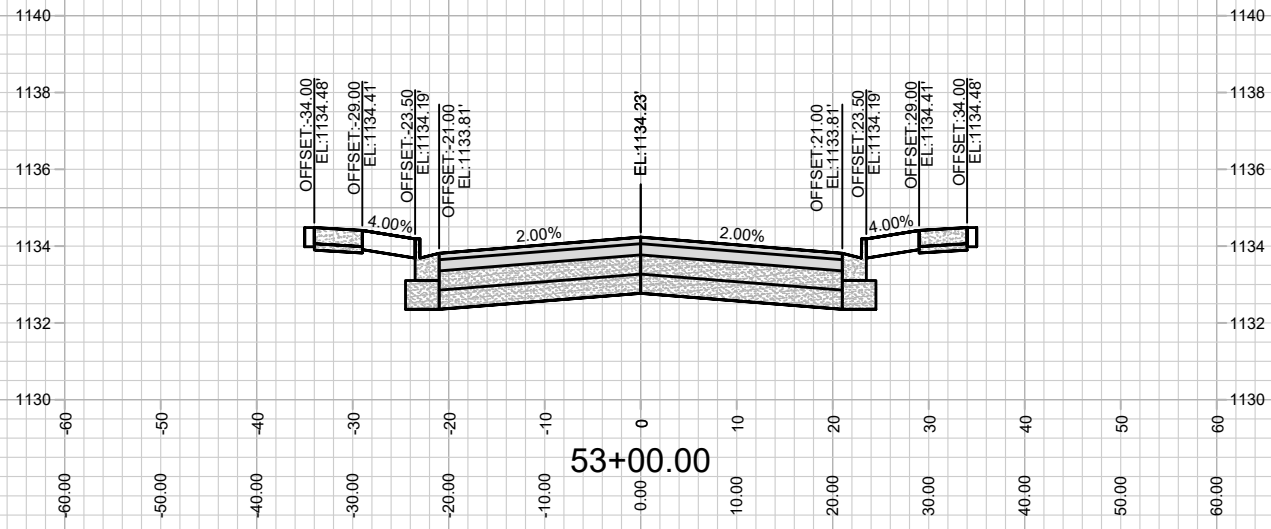
MARK	REVISION	DATE	BY
13763	13763	1/28/2022 1:44 PM	X-5

13763
MADISON, WI
9066
CONTRACT NO:

N. SUGAR MAPLE LN
EAGLE TRACE: PHASE 5
M:\DESIGN\Projects\13763\CAD\Streets\13763EN-Corridor.dwg



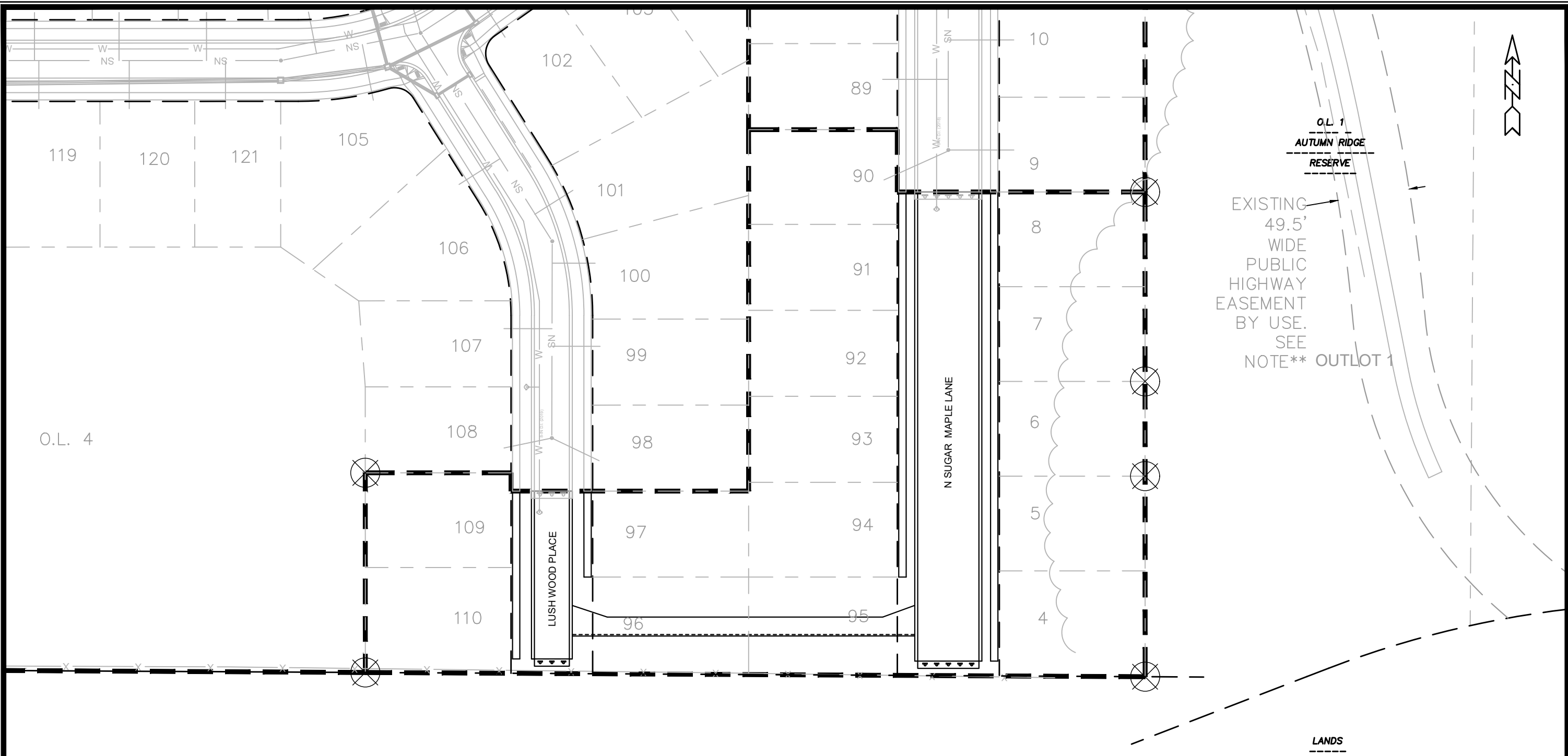
13763
X-5



MARK	REVISION	DATE	BY
13763	1/28/2022 1:44 PM		
Designed By: ###		Scale: #####	
13763		X-6	

13763
MADISON, WI
9066
CONTRACT NO:

N. SUGAR MAPLE LN
EAGLE TRACE: PHASE 5
M:\DESIGN\Projects\13763\CAD\Streets\13763EN-Corridor.dwg



LEGEND:

— — — = PHASE BOUNDARY

⊗ = INSTALL PROPERTY BOUNDARY MARKERS AT LOT CORNER WITH CITY ENGINEERING STORMWATER MANAGEMENT FACILITY.

BOUNDARY MARKERS SHALL BE CARSONITE DUAL-SIDED TRAIL MARKER 60" FIBERGLASS, COLOR: BROWN AND SHALL HAVE A CITY OF MADISON ENGINEERING DIVISION BOUNDARY MARKER LOGO DECAL

MARK	REVISION	DATE	BY
13763			PBM-1
Designed By: ###		Date: 1/28/2022 1:59 PM	
Scale: #####			
13763		9066	
PROPERTY BOUNDARY MAKERS		CONTRACT NO:	
EAGLE TRACE: PHASE 5		13763	
M:\DESIGN\Projects\13763\CAD\Streets\13763_PropertyBoundaryMakers.dwg		MADISON, WI	
CITY OF MADISON WISCONSIN		13763	
PBM-1		PBM-1	