

Madison, Wisconsin

# CITY OF MADISON

## CITY ENGINEERING DIVISION

### DEPARTMENT OF PUBLIC WORKS

# PLAN OF PROPOSED IMPROVEMENT

PUBLIC IMPROVEMENT PROJECT APPROVED

NOVEMBER 2, 2021

BY THE COMMON COUNCIL OF MADISON, WISCONSIN

PUBLIC IMPROVEMENT DESIGN APPROVED BY:

*Greg Fries*

Oct 14, 2022

City Engineer

Date

INDEX OF SHEETS

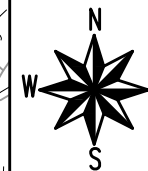
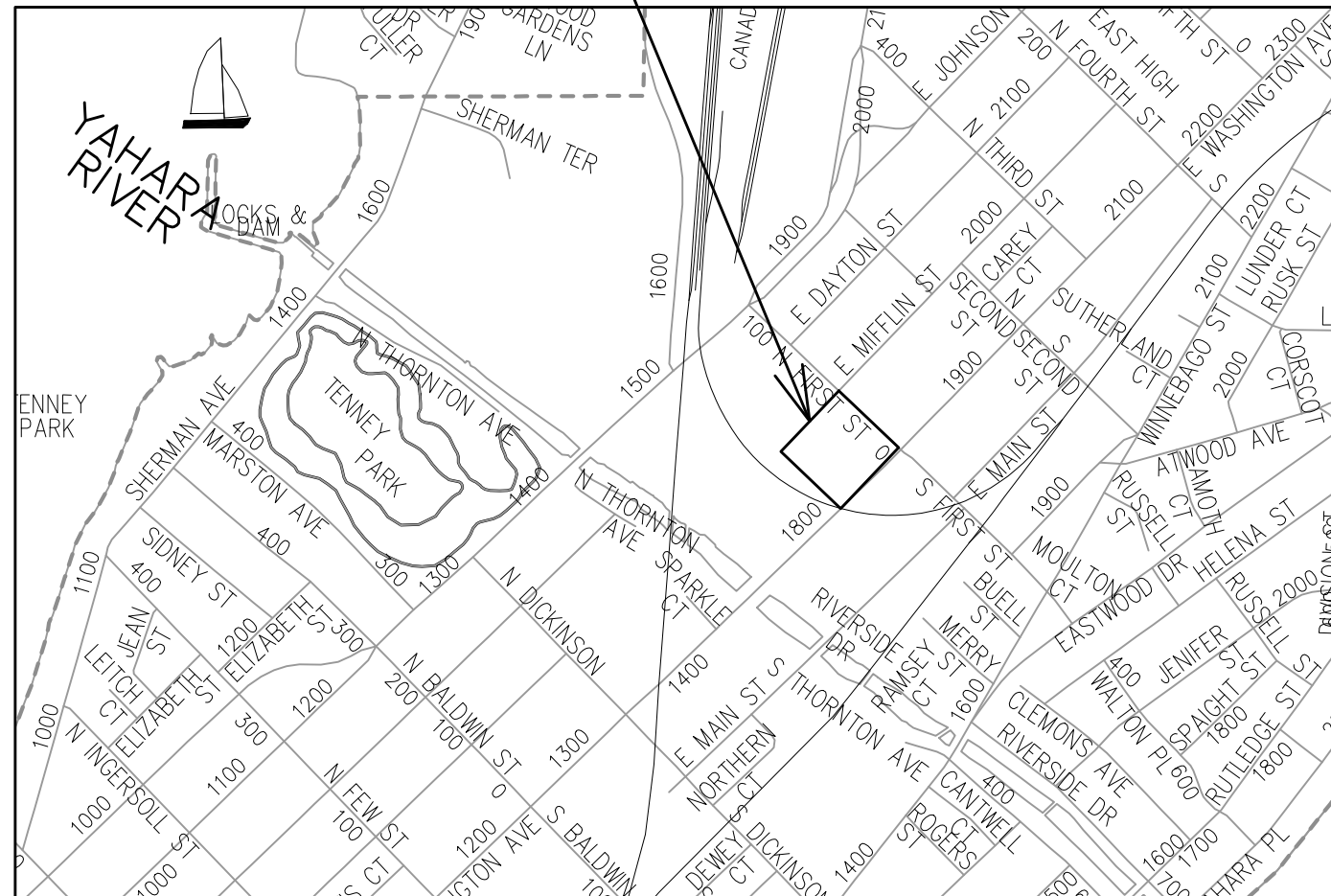
SHEET NO.		STANDARD NOTES & COMMENTS
D1		
D2		
E1 - E3		
P1 - P4		
U1		
L1		
X1 - X9		
MN1		

## 1874 EAST WASHINGTON AVENUE

CITY PROJECT NO. 13771  
CONTRACT NO. 9073

REVISED 4/26/23 BY IO

### PROJECT LOCATION



STREET DESIGNED BY:

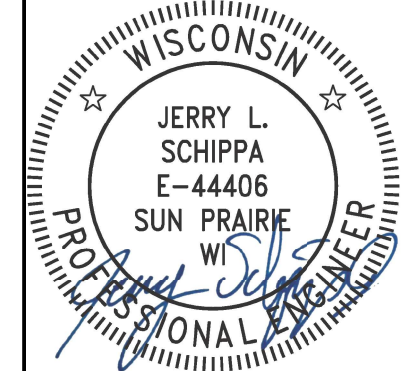


Oct 17, 2022

SANITARY SEWER DESIGNED BY:

LATERALS ONLY

ELECTRICAL DESIGNED BY:



Oct 14, 2022

STORM SEWER DESIGNED BY:

LATERALS ONLY

WATER DESIGNED BY:

LATERALS ONLY

PLOT SCALE: 1 IN. = 1 FT. XREF

PLOT NAME: ---

REV. DATE: 9/9/2022 1:23 PM




ORIGINATOR: CITY\_OF\_MADISON

ALL PROPOSED STREET TREE REMOVALS WITHIN THE RIGHT OF WAY SHALL BE REVIEWED BY CITY FORESTRY BEFORE THE PLAN COMMISSION MEETING. STREET TREE REMOVALS REQUIRE APPROVAL AND A TREE REMOVAL PERMIT ISSUED BY CITY FORESTRY. ANY STREET TREE REMOVALS REQUESTED AFTER THE DEVELOPMENT PLAN IS APPROVED BY THE PLAN COMMISSION OR THE BOARD OF PUBLIC WORKS AND CITY FORESTRY WILL REQUIRE A MINIMUM OF A 72-HOUR REVIEW PERIOD WHICH SHALL INCLUDE THE NOTIFICATION OF THE ALDERPERSON WITHIN WHO'S DISTRICT IS AFFECTED BY THE STREET TREE REMOVAL(S) PRIOR TO A TREE REMOVAL PERMIT BEING ISSUED.

AS DEFINED BY THE SECTION 107.13 OF CITY OF MADISON STANDARD SPECIFICATIONS FOR PUBLIC WORKS CONSTRUCTION: NO EXCAVATION IS PERMITTED WITHIN 5 FEET OF THE TRUNK OF THE STREET TREE OR WHEN CUTTING ROOTS OVER 3 INCHES IN DIAMETER. IF EXCAVATION IS NECESSARY, THE CONTRACTOR SHALL CONTACT MADISON CITY FORESTRY (266-4816) PRIOR TO EXCAVATION. CITY OF MADISON FORESTRY PERSONNEL SHALL ASSESS THE IMPACT TO THE TREE AND TO ITS ROOT SYSTEM PRIOR TO WORK COMMENCING. TREE PROTECTION SPECIFICATIONS CAN BE FOUND ON THE FOLLOWING WEBSITE: [HTTPS://WWW.CITYOFMADISON.COM/BUSINESS/PW/SPECS.CFM](https://www.cityofmadison.com/business/pw/specs.cfm)

DEVELOPER MUST SUBMIT A TRAFFIC CONTROL PLAN TO CITY TRAFFIC ENGINEERING AT LEAST 14 DAYS PRIOR TO THE START OF WORK. WORK SHALL NOT PROCEED UNTIL AN APPROVED TRAFFIC CONTROL PLAN IS IN PLACE.

CONTACT PROJECT ENGINEER AND STREET DESIGNER IKE OKAFOR AT [IOKAFOR@CITYOFMADISON.COM](mailto:IOKAFOR@CITYOFMADISON.COM) FOR CAD AND ALIGNMENT DATA PRIOR TO STAKING.

CONVENTIONAL SIGNS	
FIELD VERIFY ALL UTILITY LOCATIONS	
GAS	—— G ——
STORM SEWER	—— ST ——
SANITARY SEWER	—— SN ——
WATER	—— W ——
BURIED ELECTRIC	—— E ——
OVERHEAD ELECTRIC	—— OH ——
POWER POLE	
ADA COMPLIANT RAMP W/ DETECTABLE WARNING FIELD	
COMBUSTIBLE FLUIDS	

UNDERDRAINS SHALL BE INSTALLED PER STANDARD DETAIL DRAWING 4.05 FOR 75' ON EACH SIDE OF THE LOW POINT, OR TO THE NEAREST CURB HIGH POINT. ALL UNDERDRAIN SHALL BE WRAPPED.

ALL GUTTERS SHALL DRAIN WITH A MINIMUM GRADE OF 0.5% TOWARD STORM SEWER INLETS.

ALL DITCHES SHALL DRAIN WITH A MINIMUM GRADE OF 0.5%

THE CROSS SLOPE OF SIDEWALKS AND BARRIER FREE SIDEWALK CURB RAMPS SHALL TYPICALLY BE 1.5%. THE LONGITUDINAL GRADE OF BARRIER FREE SIDEWALK CURB RAMPS SHALL NOT EXCEED 8.33%. ALL SIDEWALK RAMPS SHALL BE CONSTRUCTED ACCORDING TO S.D.D. 3.04. AT ALL OTHER LOCATIONS THE LONGITUDINAL GRADE OF SIDEWALKS SHALL NOT BE LESS THAN 0.5% AND SHALL DRAIN TOWARD STORM SEWER INLETS. ALL SIDEWALK AND SIDEWALK RAMP ELEVATIONS AND GRADES SHALL BE FIELD VERIFIED AND SET TO COMPLY WITH THE CITY OF MADISON STANDARD SPECIFICATIONS AND THE A.D.A. GUIDELINES.

CURB STATION AND OFFSETS SHALL BE TO THE EDGE OF PAVEMENT UNLESS OTHERWISE INDICATED. CURB ELEVATIONS SHALL BE TO THE EDGE OF PAVEMENT UNLESS OTHERWISE INDICATED.

POWER POLES AND OTHER OBSTRUCTIONS SHALL BE MOVED TO PROVIDE 2 FEET MINIMUM OF CLEAR DISTANCE FROM ANY FACE OF CURB OR EDGE OF SIDEWALK.

ANY INFORMATION SHOWN ON THIS PLAN, WHICH IS NOT PART OF THIS RIGHT-OF-WAY PROJECT, IS PRELIMINARY AND NOT FOR CONSTRUCTION.

THERE MAY BE EXISTING UTILITIES OR OTHER FEATURES WHICH ARE EITHER NOT SHOWN OR SHOWN INCORRECTLY ON THIS PLAN. IT IS THE RESPONSIBILITY OF THE DEVELOPER TO LOCATE AND IDENTIFY ALL UTILITIES AND TOPOGRAPHY WHICH MAY AFFECT THE CONSTRUCTION OF THESE IMPROVEMENTS.

ALL PERMANENT SIGNING AND POSTING WILL BE DETERMINED AND PROVIDED BY THE TRAFFIC ENGINEERING DIVISION, FOLLOWING CONSTRUCTION OF THESE IMPROVEMENTS.

THE DEVELOPER SHALL PROVIDE, INSTALL AND MAINTAIN ALL STREET END BARRICADES, SIGNING AND TRAFFIC CONTROL, AS REQUIRED BY THE CITY TRAFFIC ENGINEER.

PAVEMENT SAWCUTS SHALL BE AS DIRECTED BY THE CITY CONSTRUCTION ENGINEER. SAWCUTS SHOWN ON THE PLAN ARE APPROXIMATE.

ALL WORK IN THE RIGHT OF WAY AND PUBLIC EASEMENTS SHALL BE IN ACCORDANCE WITH THE CITY OF MADISON STANDARD SPECIFICATIONS FOR PUBLIC WORKS CONSTRUCTION

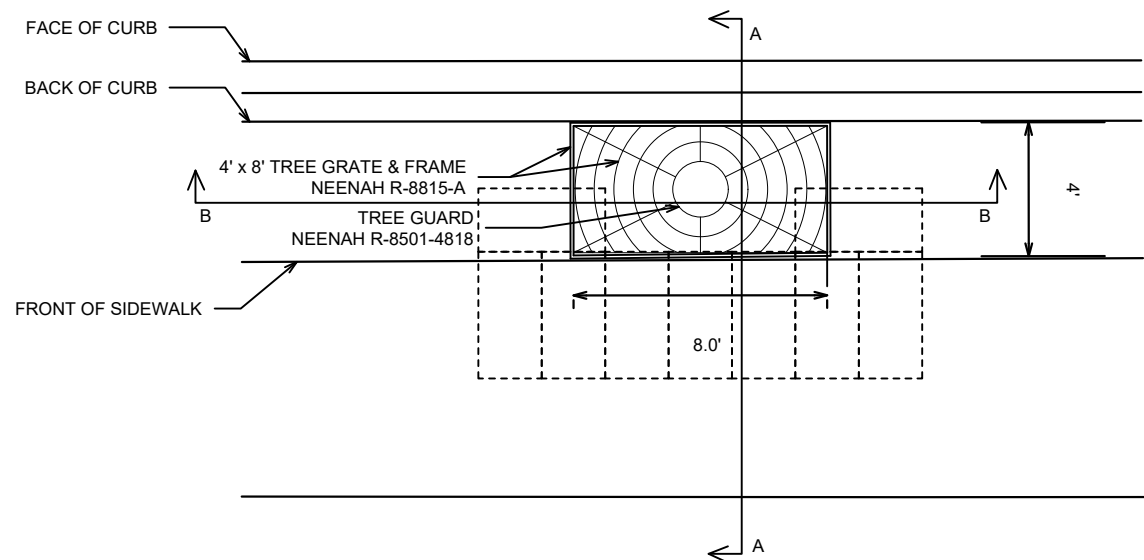
ALL UTILITY VERIFICATIONS AND ACCURACY OF THE DRAWINGS ARE THE RESPONSIBILITY OF THE DEVELOPER. ANY CONFLICTS THAT ARISE FROM MISSING OR ERRONEOUS INFORMATION WILL BE AT THE EXPENSE OF THE DEVELOPER. NO PRECAST WILL BE APPROVED FOR STORM SEWER OR SANITARY SEWER UNTIL ALL POTENTIAL UTILITY CONFLICTS ARE RESOLVED.

MARK	DESIGNED BY	DATE	REVISION	DATE	BY
13771		06/20/22		1:13 PM	

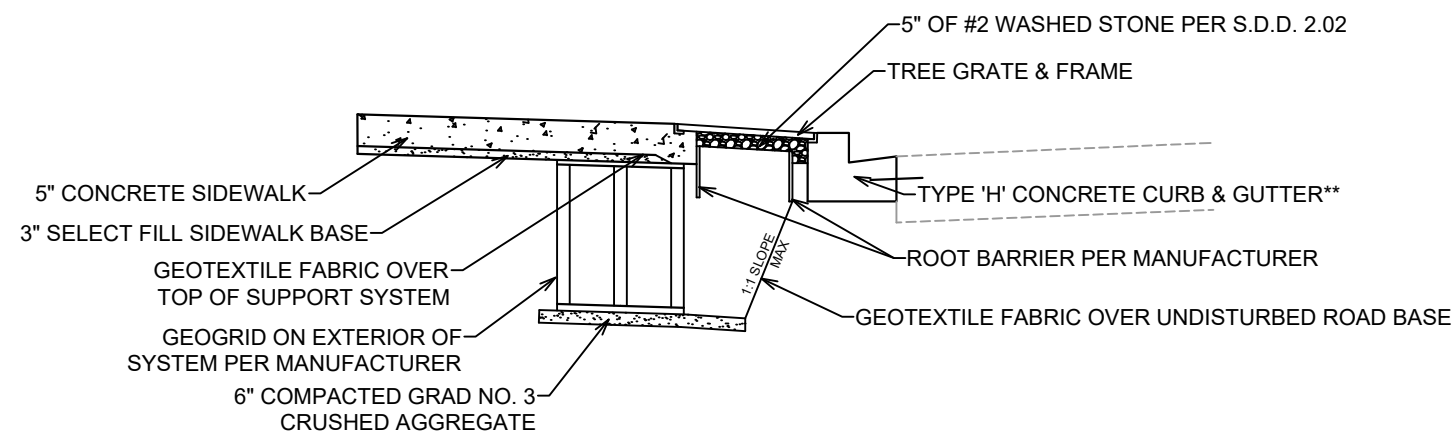
13771  
MADISON, WI  
9073  
CONTRACT NO:

STANDARD NOTES & COMMENTS  
1874 E WASHINGTON AVENUE  
M:\DESIGN\Projects\13771\CAD\Streets\13771EN-Details.dwg

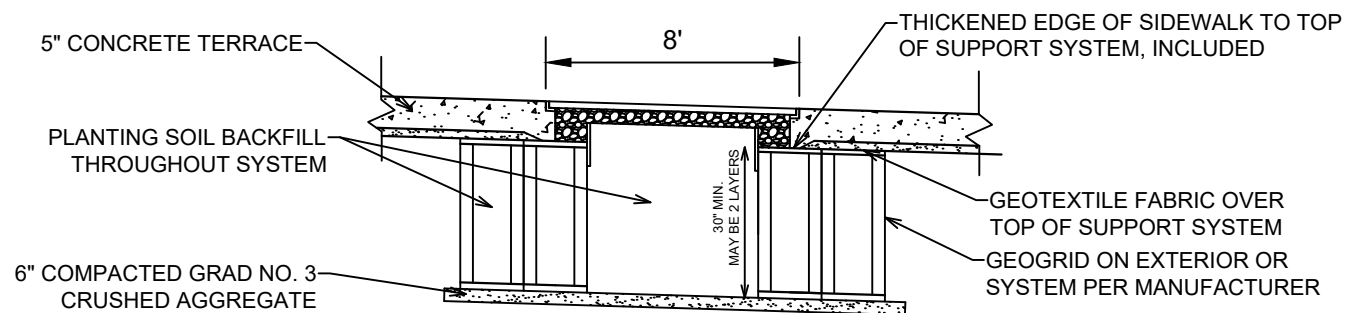




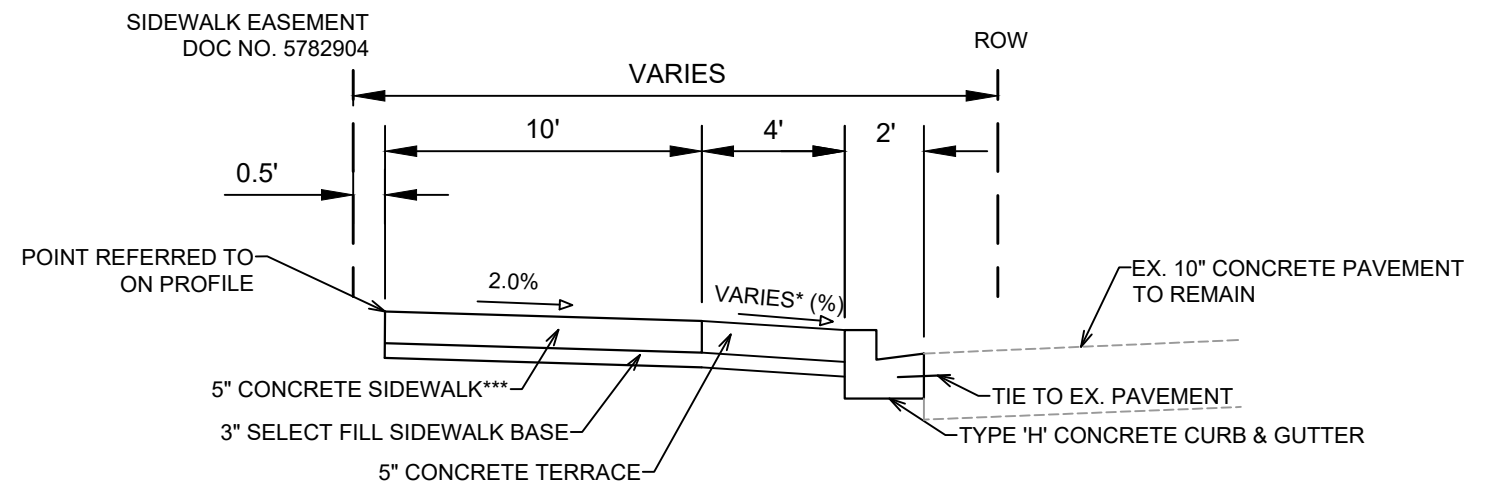
**PLAN VIEW  
TREE GRATE INSTALLATION DETAIL  
NOT TO SCALE**



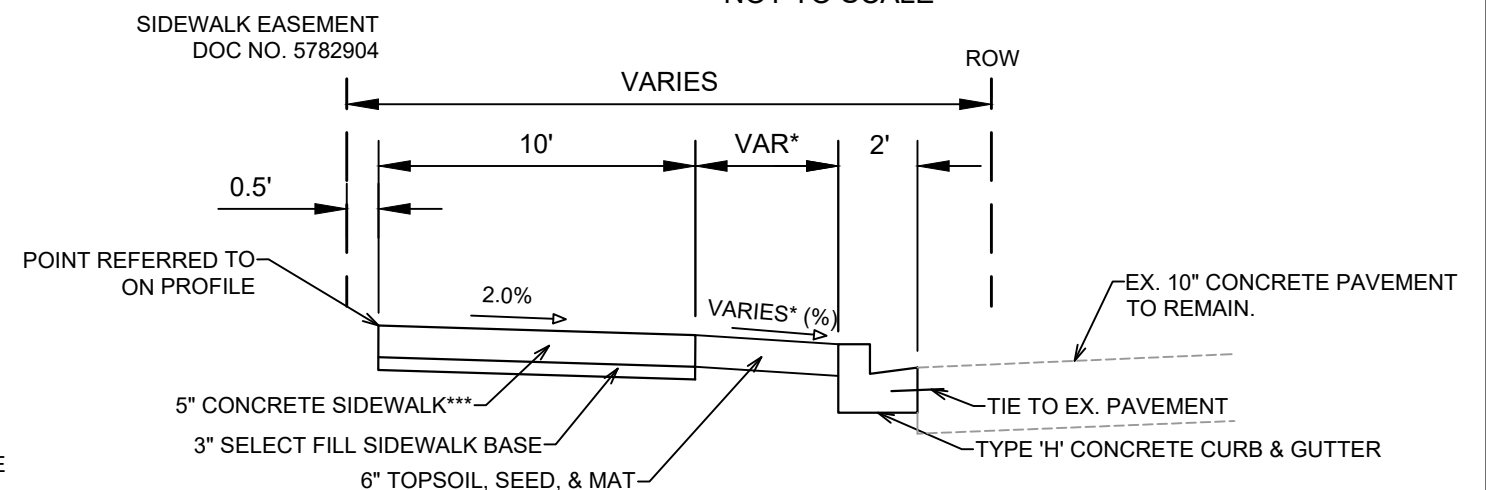
**SECTION A-A  
TERRACE SUPPORT SYSTEM DETAIL  
NOT TO SCALE**



**SECTION B-B  
TERRACE SUPPORT SYSTEM DETAIL  
NOT TO SCALE**



**TYPICAL SECTION  
E WASHINGTON AVENUE  
NOT TO SCALE**



**TYPICAL SECTION  
N FIRST STREET  
NOT TO SCALE**

**NOTES:**

- \* SEE PLAN & CROSS SECTIONS FOR DETAILS AND DIMENSIONS.
  - \*\* BACK OF CURB SHALL BE EXTENDED 1" AND FORMED TO SUPPORT TREE GRATE AND FRAME.
  - \*\*\* TRANSVERSE JOINTS SHALL BE SAWCUT INTO SIDEWALK.
1. LOCATIONS OF TREES AND APPROXIMATE LIMITS OF TERRACES SUPPORT SYSTEM ARE SHOWN ON THE LANDSCAPING PLAN. THE FINAL LAYOUT OF THE SYSTEM IS DEPENDENT ON THE MANUFACTURER SELECTED BY THE DEVELOPER SHALL CONFIRM THE LAYOUT WITH THE ENGINEER & CITY FORESTRY PRIOR TO INSTALLATION.
  2. TERRACE SUPPORT SYSTEM SHALL BE INSTALLED PER MANUFACTURER'S RECOMMENDATIONS INCLUDING ALL FABRICS, GEOGRID, AND ROOT BARRIERS, MINIMUM DEPTH OF THE SYSTEM IS PROVIDED ON THE DETAIL, AND THIS MAY BE ACHIEVED IN A SINGLE LAYER OR TWO LAYERS. IN LOCATIONS OF SHALLOWER UTILITY CROSSING, THE DEPTH OF THE SYSTEM SHALL BE MODIFIED AS INDICATED ON THE LANDSCAPE PLAN.
  3. THE PERIMETER OF THE SYSTEM AT EACH PLANTING LOCATION SHALL BE ENCLOSED WITH A GEOGRID AND THE TOP SURFACE IS TO BE COVERED WITH A FABRIC THAT IS TO BE HELD IN PLACE WITH A THICKENED CONCRETE EDGE AS SHOWN ON THE DETAIL.
  4. BACKFILL THE ENTIRE SYSTEM WITH PLANTING SOIL TO WITHIN 5" OF THE BOTTOM OF THE TREE GRATE. ADD SOIL AS NECESSARY DURING THE TREE PLANTING PROCESS. THE REMAINING AREA IS TO BE TOPPED WITH WASHED STONE AS INDICATED IN THE STANDARD DETAIL DRAWING.
  5. CONTRACTOR MUST TAKE CAUTION DURING TERRACE EXCAVATION TO AVOID EXISTING ROAD BASE.
  6. THE CONTRACTOR SHALL PROVIDE AND INSTALL THE DEEPROOT SILVA CELLS, GREENBLUE URBAN ROOTSPACE, OR APPROVED EQUAL, ACCORDING TO THE MANUFACTURER'S REQUIREMENTS. THE OBJECTIVE OF INSTALLING THESE CELLS IS TO SUPPORT THE CONCRETE TERRACE, SIDEWALK AND TREE GRATES WHILE KEEPING BACKFILL MATERIAL WITHIN THE CELLS UNCOMPACTED TO PROVIDE A BETTER GROWING ENVIRONMENT FOR THE TREES.
  7. THE DEVELOPER SHALL SEND THE FINAL TERRACE SUPPORT LAYOUT & SPECIFICATIONS TO THE CITY PROJECT ENGINEER AT LEAST 14 DAYS BEFORE CONSTRUCTION.

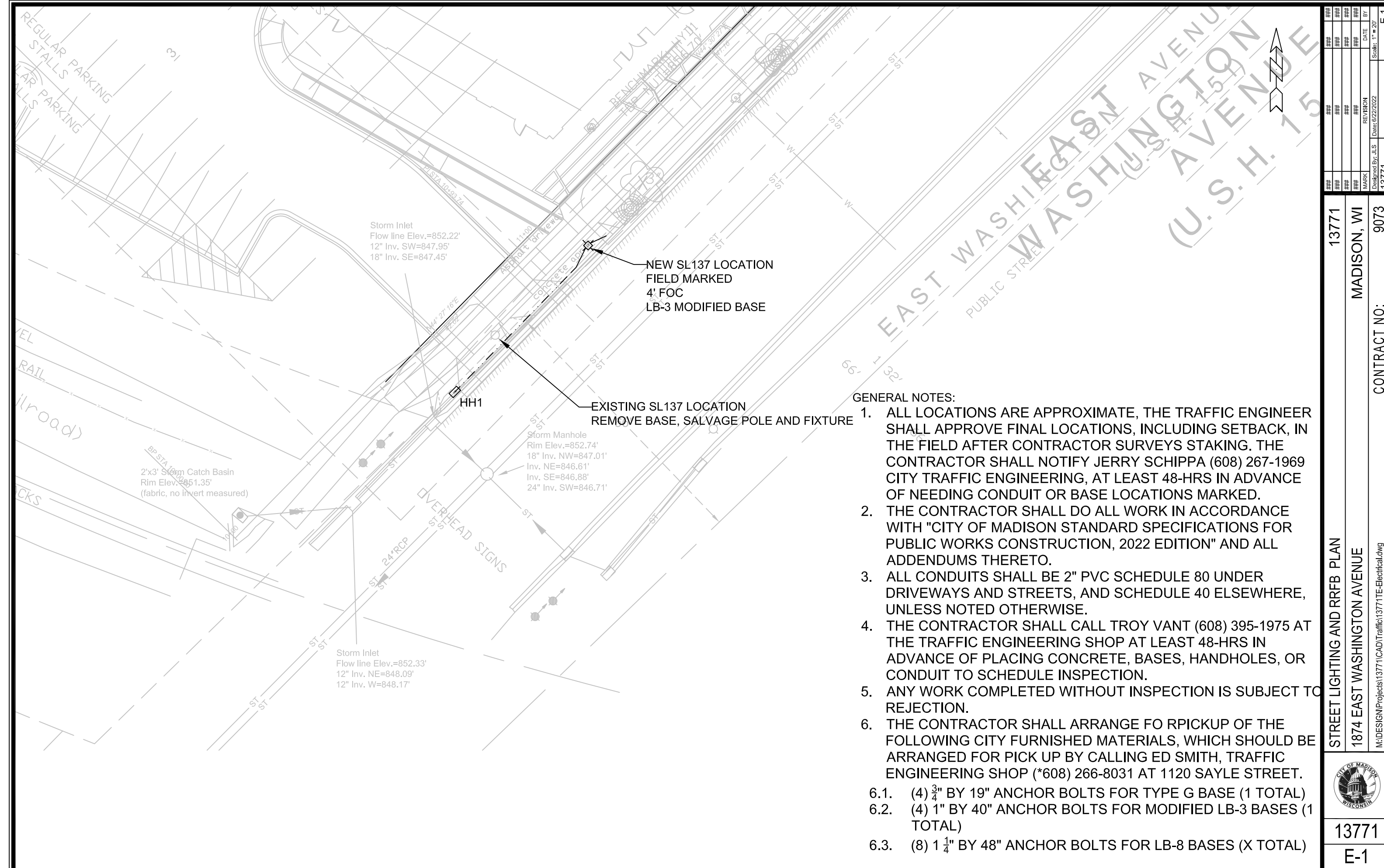
DATE	BY
REVISION	
Scale: Custom	D-2
Designed By: IO	13771

13771  
MADISON, WI  
9073  
CONTRACT NO:

TYPICAL SECTIONS  
1874 E WASHINGTON AVENUE  
M:\DESIGN\Projects\13771\CAD\Streets\13771EN-Details.dwg



13771  
D-2



Storm Inlet  
Flow line Elev.=852.22'  
12" Inv. SW=847.95'  
18" Inv. SE=847.45'

NEW SL137 LOCATION  
FIELD MARKED  
4' FOC  
LB-3 MODIFIED BASE

EXISTING SL137 LOCATION  
REMOVE BASE, SALVAGE POLE AND FIXTURE


Storm Manhole  
Rim Elev.=852.74'  
18" Inv. NW=847.01'  
Inv. NE=846.61'  
Inv. SE=846.88'  
24" Inv. SW=846.71'

2'x3' Storm Catch Basin  
Rim Elev.=851.35'  
(fabric, no invert measured)

Storm Inlet  
Flow line Elev.=852.33'  
12" Inv. NE=848.09'  
12" Inv. W=848.17'

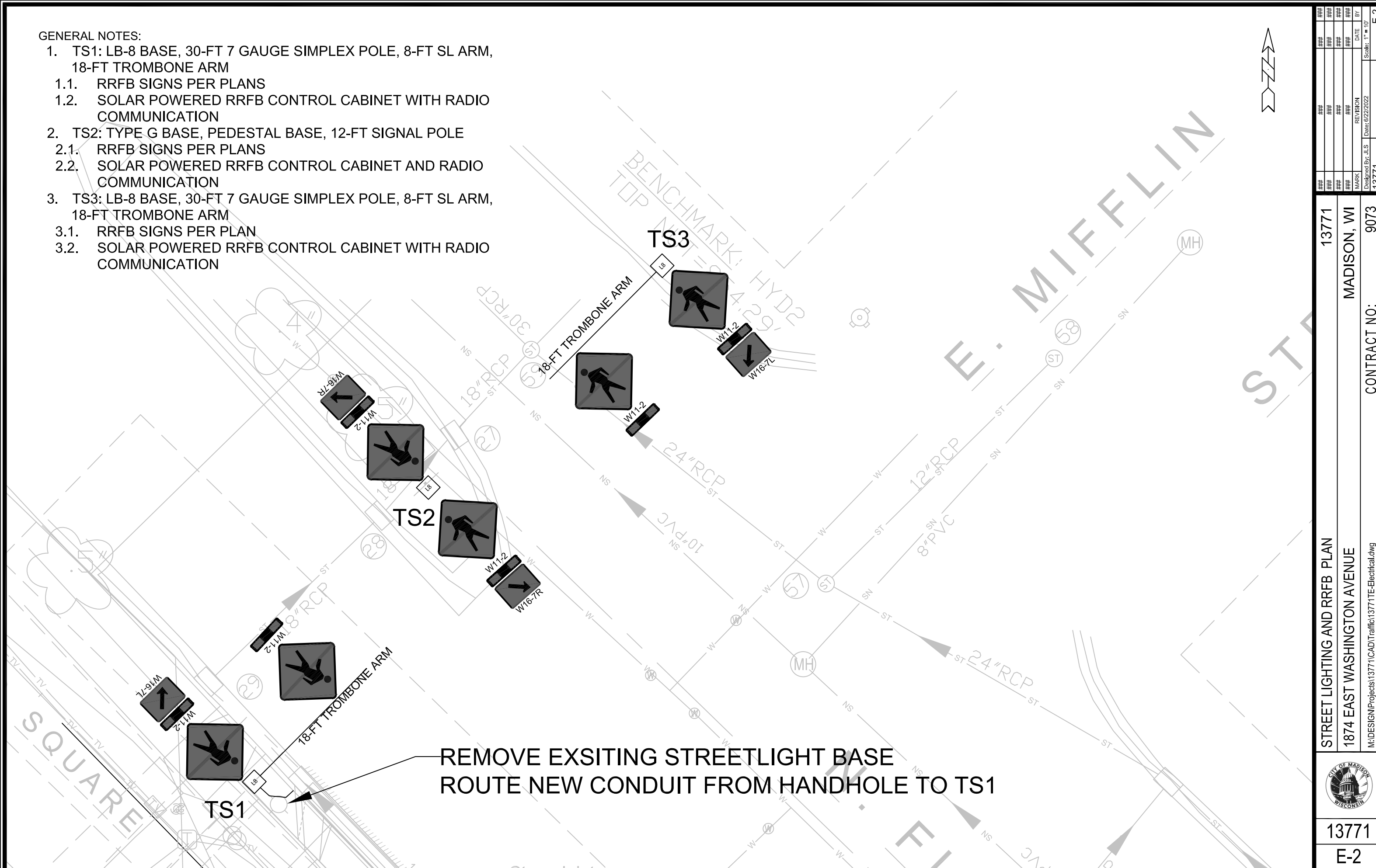
**GENERAL NOTES:**

1. ALL LOCATIONS ARE APPROXIMATE, THE TRAFFIC ENGINEER SHALL APPROVE FINAL LOCATIONS, INCLUDING SETBACK, IN THE FIELD AFTER CONTRACTOR SURVEYS STAKING. THE CONTRACTOR SHALL NOTIFY JERRY SCHIPPA (608) 267-1969 CITY TRAFFIC ENGINEERING, AT LEAST 48-HRS IN ADVANCE OF NEEDING CONDUIT OR BASE LOCATIONS MARKED.
2. THE CONTRACTOR SHALL DO ALL WORK IN ACCORDANCE WITH "CITY OF MADISON STANDARD SPECIFICATIONS FOR PUBLIC WORKS CONSTRUCTION, 2022 EDITION" AND ALL ADDENDUMS THERETO.
3. ALL CONDUITS SHALL BE 2" PVC SCHEDULE 80 UNDER DRIVEWAYS AND STREETS, AND SCHEDULE 40 ELSEWHERE, UNLESS NOTED OTHERWISE.
4. THE CONTRACTOR SHALL CALL TROY VANT (608) 395-1975 AT THE TRAFFIC ENGINEERING SHOP AT LEAST 48-HRS IN ADVANCE OF PLACING CONCRETE, BASES, HANDHOLES, OR CONDUIT TO SCHEDULE INSPECTION.
5. ANY WORK COMPLETED WITHOUT INSPECTION IS SUBJECT TO REJECTION.
6. THE CONTRACTOR SHALL ARRANGE FOR PICKUP OF THE FOLLOWING CITY FURNISHED MATERIALS, WHICH SHOULD BE ARRANGED FOR PICK UP BY CALLING ED SMITH, TRAFFIC ENGINEERING SHOP (\*608) 266-8031 AT 1120 SAYLE STREET.
  - 6.1. (4) 3/4" BY 19" ANCHOR BOLTS FOR TYPE G BASE (1 TOTAL)
  - 6.2. (4) 1" BY 40" ANCHOR BOLTS FOR MODIFIED LB-3 BASES (1 TOTAL)
  - 6.3. (8) 1 1/4" BY 48" ANCHOR BOLTS FOR LB-8 BASES (X TOTAL)

STREET LIGHTING AND RRFB PLAN	13771	MADISON, WI	9073	E-1
1874 EAST WASHINGTON AVENUE				
M:\DESIGN\Projects\13771\CAD\Traffic\13771TE-Electrical.dwg				
				
13771				
E-1				

**GENERAL NOTES:**

1. TS1: LB-8 BASE, 30-FT 7 GAUGE SIMPLEX POLE, 8-FT SL ARM, 18-FT TROMBONE ARM
  - 1.1. RRFB SIGNS PER PLANS
  - 1.2. SOLAR POWERED RRFB CONTROL CABINET WITH RADIO COMMUNICATION
2. TS2: TYPE G BASE, PEDESTAL BASE, 12-FT SIGNAL POLE
  - 2.1. RRFB SIGNS PER PLANS
  - 2.2. SOLAR POWERED RRFB CONTROL CABINET AND RADIO COMMUNICATION
3. TS3: LB-8 BASE, 30-FT 7 GAUGE SIMPLEX POLE, 8-FT SL ARM, 18-FT TROMBONE ARM
  - 3.1. RRFB SIGNS PER PLAN
  - 3.2. SOLAR POWERED RRFB CONTROL CABINET WITH RADIO COMMUNICATION



**REMOVE EXSITING STREETLIGHT BASE  
ROUTE NEW CONDUIT FROM HANDHOLE TO TS1**



##	##	##	##	##	##	##	##
##	##	##	##	##	##	##	##
##	##	##	##	##	##	##	##
##	##	##	##	##	##	##	##
##	##	##	##	##	##	##	##
##	##	##	##	##	##	##	##

**13771**  
**MADISON, WI**  
**CONTRACT NO: 9073**

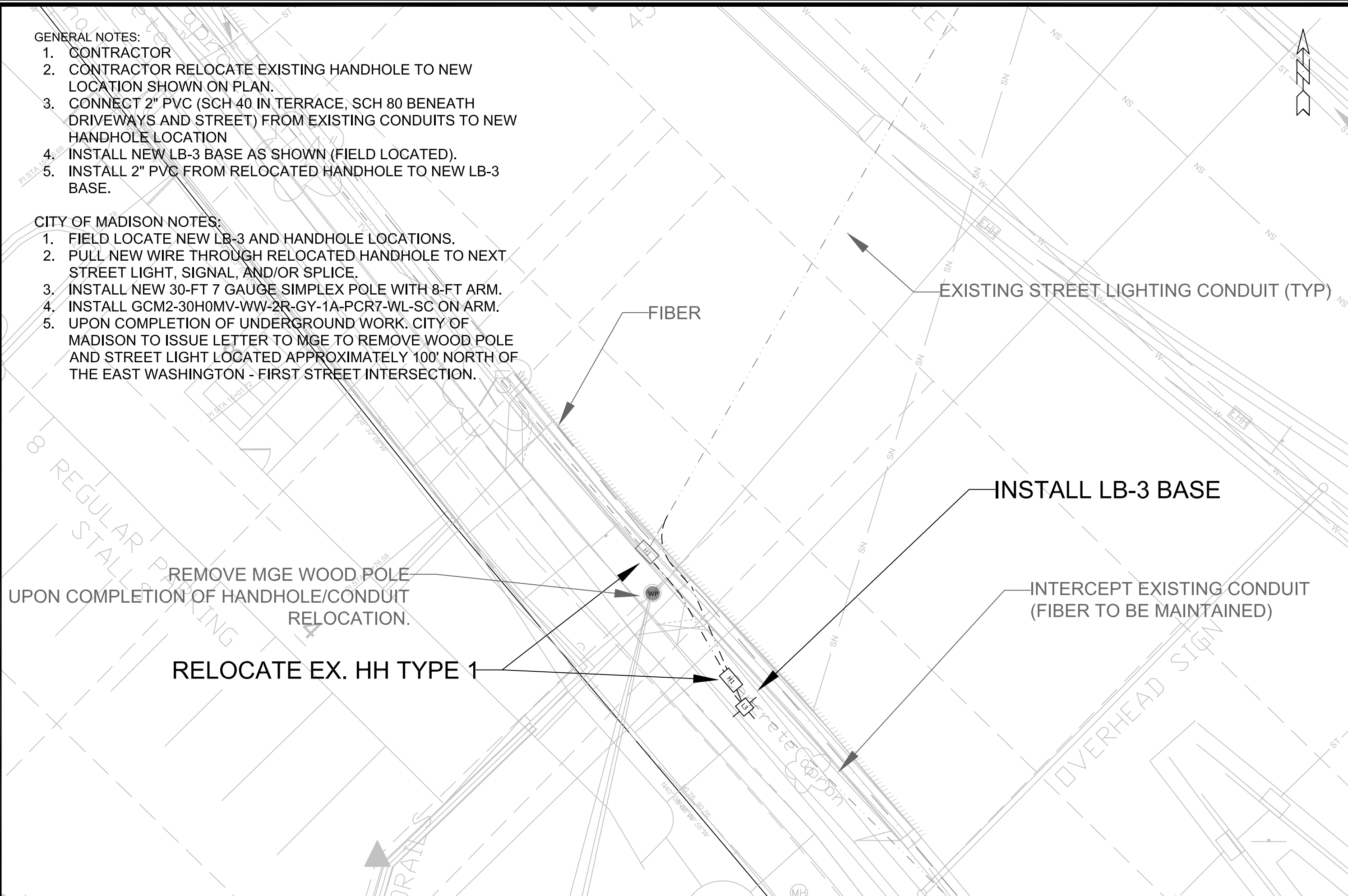



**GENERAL NOTES:**

1. CONTRACTOR
2. CONTRACTOR RELOCATE EXISTING HANDHOLE TO NEW LOCATION SHOWN ON PLAN.
3. CONNECT 2" PVC (SCH 40 IN TERRACE, SCH 80 BENEATH DRIVEWAYS AND STREET) FROM EXISTING CONDUITS TO NEW HANDHOLE LOCATION
4. INSTALL NEW LB-3 BASE AS SHOWN (FIELD LOCATED).
5. INSTALL 2" PVC FROM RELOCATED HANDHOLE TO NEW LB-3 BASE.

**CITY OF MADISON NOTES:**

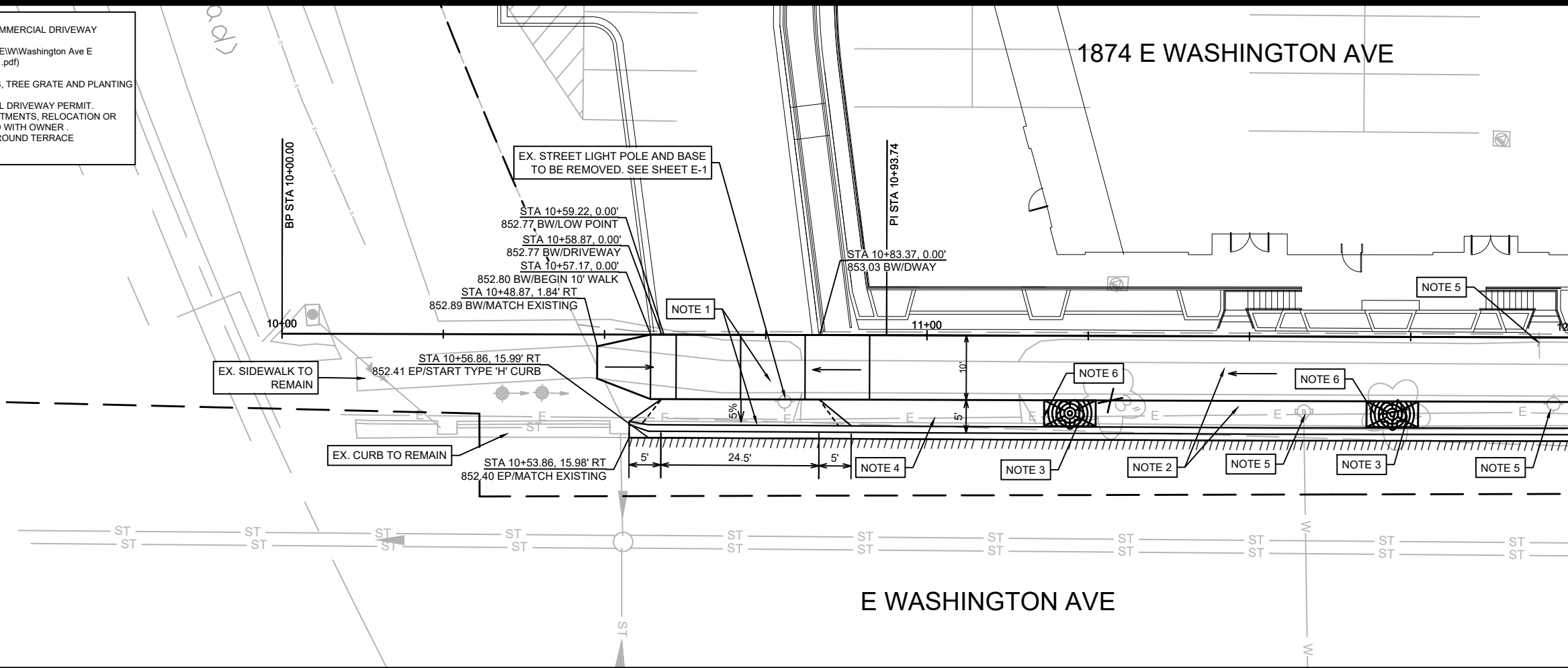
1. FIELD LOCATE NEW LB-3 AND HANDHOLE LOCATIONS.
2. PULL NEW WIRE THROUGH RELOCATED HANDHOLE TO NEXT STREET LIGHT, SIGNAL, AND/OR SPLICE.
3. INSTALL NEW 30-FT 7 GAUGE SIMPLEX POLE WITH 8-FT ARM.
4. INSTALL GCM2-30H0MV-WW-2R-GY-1A-PCR7-WL-SC ON ARM.
5. UPON COMPLETION OF UNDERGROUND WORK, CITY OF MADISON TO ISSUE LETTER TO MGE TO REMOVE WOOD POLE AND STREET LIGHT LOCATED APPROXIMATELY 100' NORTH OF THE EAST WASHINGTON - FIRST STREET INTERSECTION.



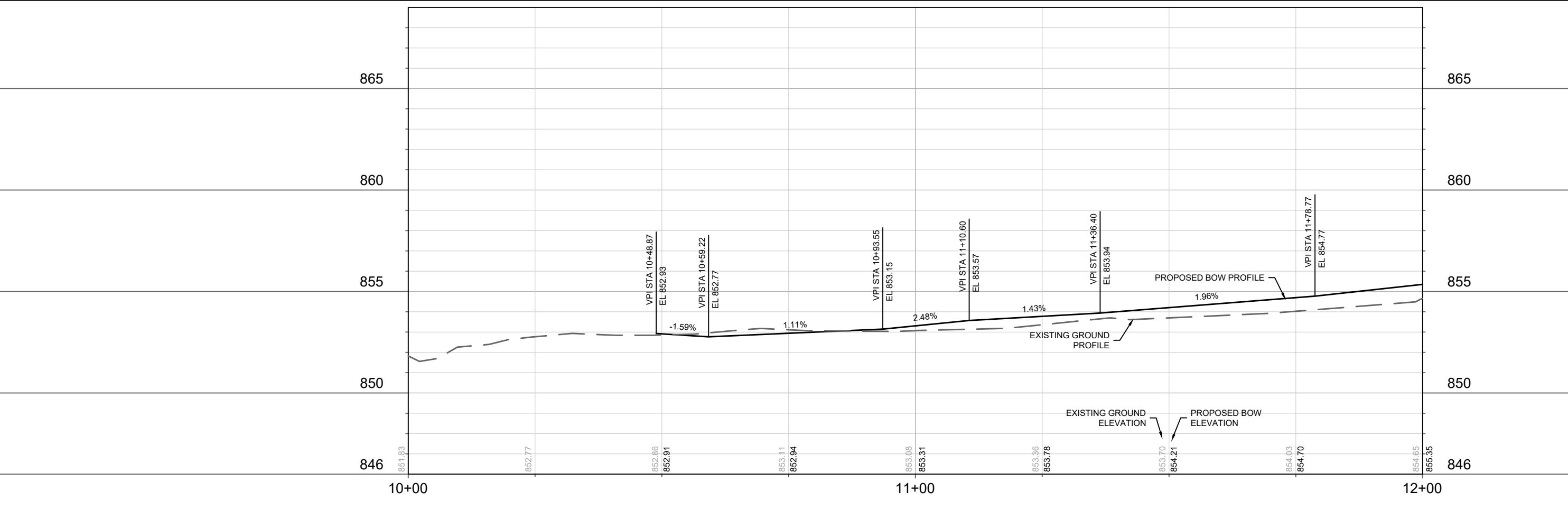
	<b>13771</b> <b>E-3</b>	<b>13771</b> <b>MADISON, WI</b> <b>CONTRACT NO: 9073</b>	<b>STREET LIGHTING AND RRFB PLAN</b> <b>1874 EAST WASHINGTON AVENUE</b> <small>M:\DESIGN\Projects\13771\CAD\Traffic\13771TE-Electrical.dwg</small>																
<table border="1" style="width: 100%; border-collapse: collapse;"> <thead> <tr> <th>MARK</th> <th>REVISION</th> <th>DATE</th> <th>BY</th> </tr> </thead> <tbody> <tr> <td>###</td> <td>###</td> <td>###</td> <td>###</td> </tr> <tr> <td>###</td> <td>###</td> <td>###</td> <td>###</td> </tr> <tr> <td>###</td> <td>###</td> <td>###</td> <td>###</td> </tr> </tbody> </table>		MARK	REVISION	DATE	BY	###	###	###	###	###	###	###	###	###	###	###	###	Designed By: JLS Date: 9/19/2022 Scale: 1" = 10' E-3	
MARK	REVISION	DATE	BY																
###	###	###	###																
###	###	###	###																
###	###	###	###																

- NOTES
- 7" DRIVEWAY APRON AND SIDEWALK. SEE COMMERCIAL DRIVEWAY PERMIT NO. LNDUSE-2021-00053 (M:\DESIGN\Traffic\Maps\_Plans\ParkingLotPlans\TEWW\Washington Ave E 1858-1890\Washington Ave E 1858 Permit\_211201.pdf)
  - 5" CONCRETE SIDEWALK & TERRACE.
  - SEE SHEETS D-2 & L-1 FOR PROPOSED TREES, TREE GRATE AND PLANTING DETAIL.
  - REMOVE DRIVEWAY APRON PER COMMERCIAL DRIVEWAY PERMIT.
  - DEVELOPER SHALL COORDINATE ANY ADJUSTMENTS, RELOCATION OR REMOVAL OF UTILITIES AND SIGNS REQUIRED WITH OWNER.
  - ELECTRICAL CONDUITS SHALL BE ROUTED AROUND TERRACE STRUCTURE.

- LEGEND
- X - CLEAR AND GRUB
  - (Symbol) - TREE GRATE
  - (Symbol) - SAWCUT
  - (Symbol) - SIDEWALK DRAINAGE PATH



MATCH LINE 12+00.00



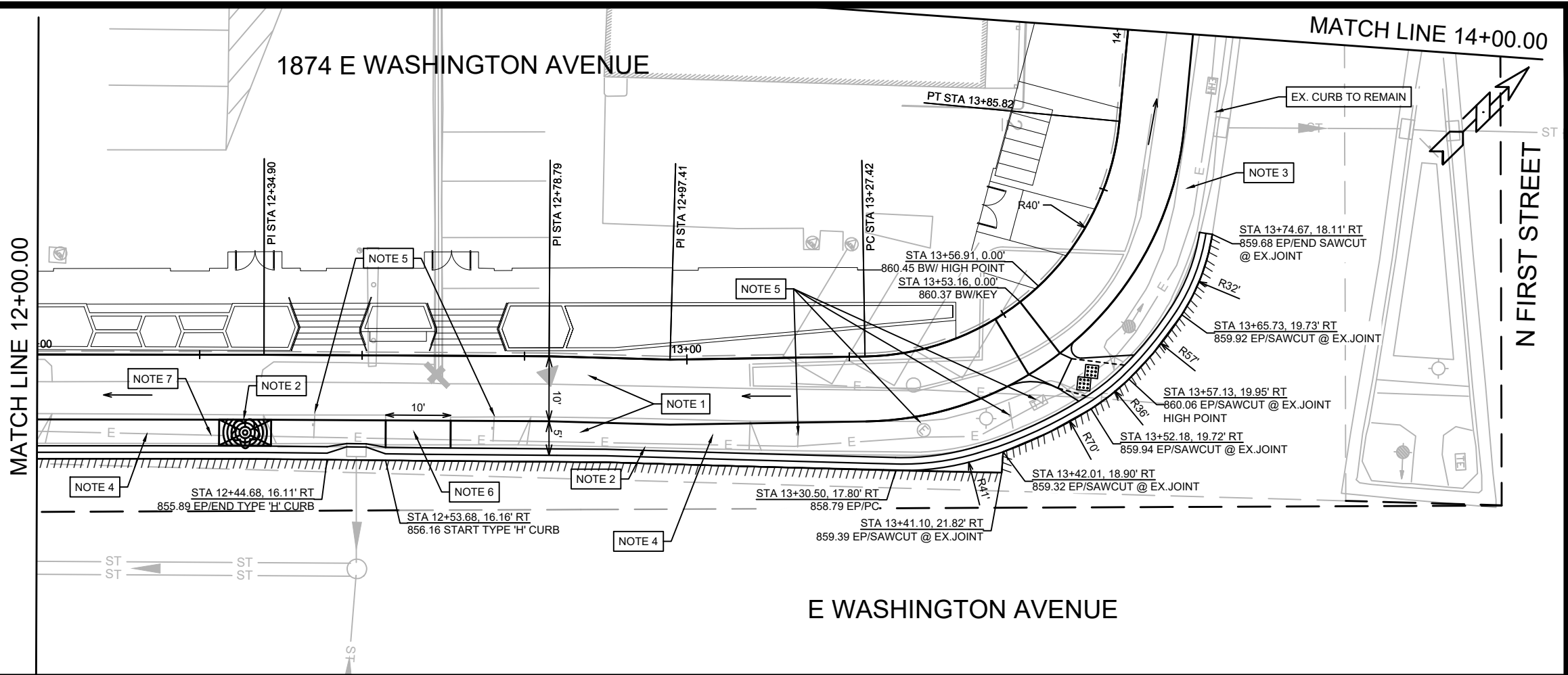
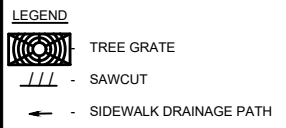
MARK	REVISION	DATE	BY

13771  
MADISON, WI  
9073  
CONTRACT NO:

STREET PLAN AND PROFILE - E WASHINGTON AVENUE  
1874 E WASHINGTON AVENUE  
M:\DESIGN\Projects\13771\CAD\Streets\13771EN-PrP.dwg



- NOTES**
- 5" CONCRETE SIDEWALK & TERRACE.
  - SEE SHEETS D-2 & L-1 FOR PROPOSED TREES, TREE GRATE, AND PLANTING DETAIL.
  - 6" TOPSOIL, SEED & MAT.
  - REMOVE DRIVEWAY APRON PER PERMIT. SEE COMMERCIAL DRIVEWAY PERMIT NO. LNDUSE-2021-00053 (M:\DESIGN\Traffic\Maps\_Plans\ParkingLotPlans\TEI\Washington Ave E 1858-1890\Washington Ave E 1858 Permit\_211201.pdf)
  - DEVELOPER SHALL COORDINATE ANY ADJUSTMENTS, RELOCATION OR REMOVAL OF UTILITIES AND SIGNS REQUIRED WITH OWNER.
  - REINSTALL BUS PAD FOR IMMEDIATE USE UPON TERMINATION OF STREET OCCUPANCY PERMIT.
  - ELECTRICAL CONDUITS SHALL BE ROUTED AROUND TERRACE STRUCTURE.



REVISION	DATE	BY

13771  
MADISON, WI  
9073  
CONTRACT NO:

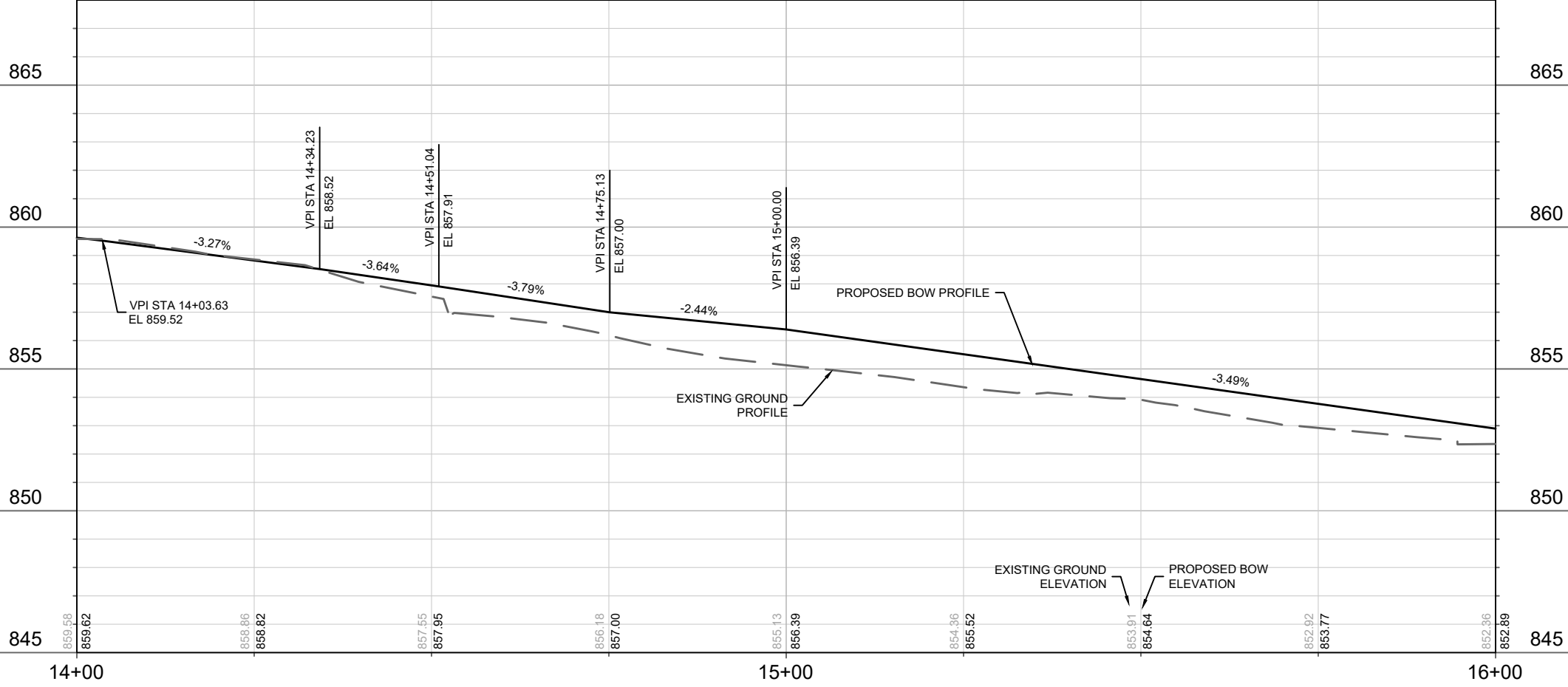
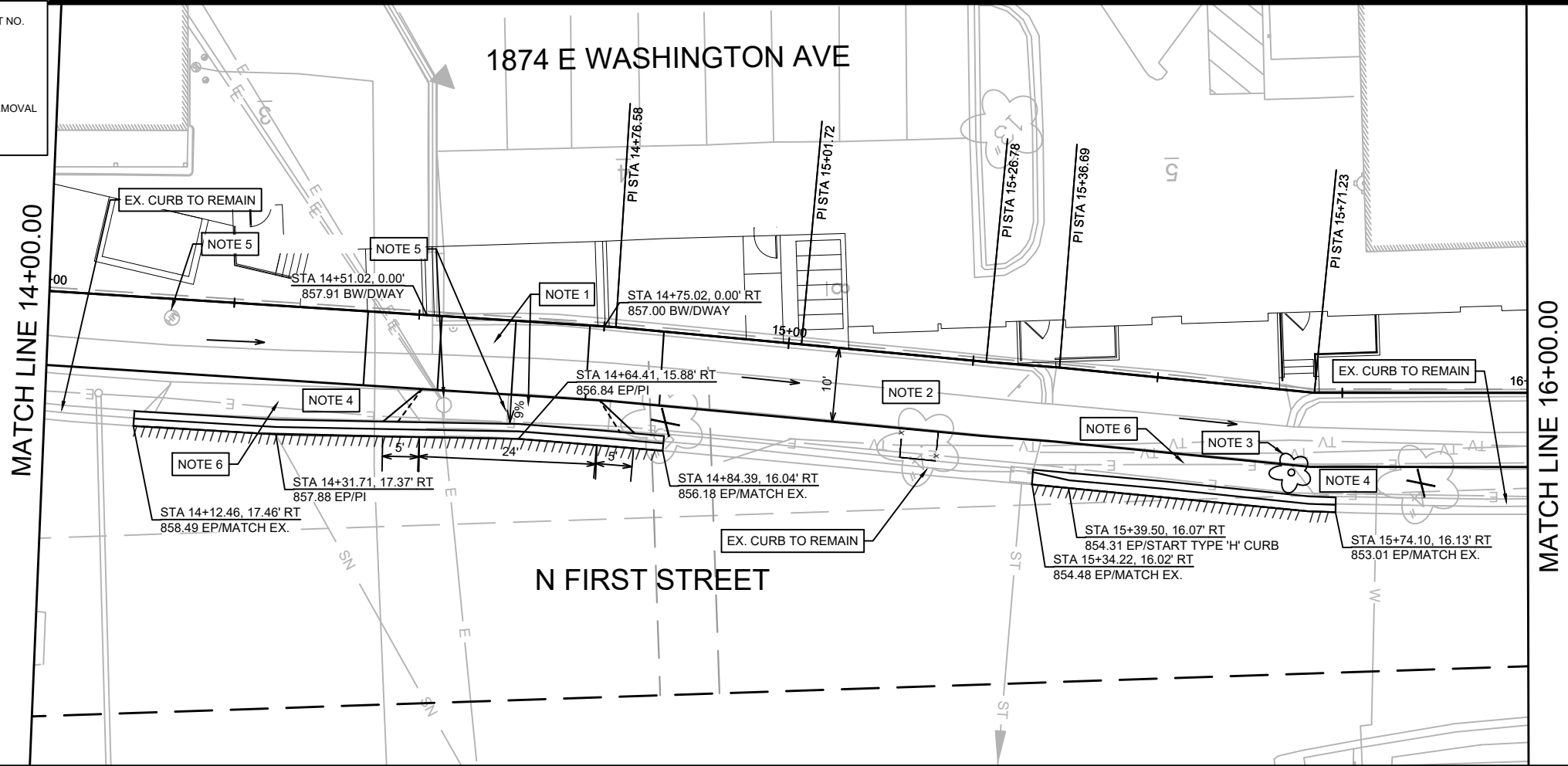
STREET PLAN AND PROFILE - E WASHINGTON AVENUE  
1874 E WASHINGTON AVENUE  
M:\DESIGN\Projects\13771\CAD\Streets\13771\EN-PnP.dwg

13771  
P-2



- NOTES**
- 7" DRIVEWAY APRON AND SIDEWALK. SEE COMMERCIAL DRIVEWAY PERMIT NO. LNDUSE-2021-00053  
M:\DESIGN\Traffic\Maps\_Plans\ParkingLotPlans\TE\W\Washington Ave E 1858-1890\Washington Ave E 1858 Permit\_211201.pdf
  - 5" CONCRETE SIDEWALK.
  - SEE SHEETS L-1 FOR PLANTING DETAIL.
  - 6" TOPSOIL, SEED & MAT.
  - DEVELOPER SHALL COORDINATE ANY ADJUSTMENTS, RELOCATION OR REMOVAL OF UTILITIES AND SIGNS REQUIRED WITH OWNER.
  - REMOVE DRIVEWAY APRON PER COMMERCIAL DRIVEWAY PERMIT.

- LEGEND**
- X - CLEAR AND GRUB
  - ☼ - PROPOSED TREE
  - /// - SAWCUT
  - ☒ - TREE PROTECTION FENCING
  - ← - SIDEWALK DRAINAGE PATH



MARK	REVISION	DATE	BY
13771	5/25/2023 12:56 PM		P-3

13771  
MADISON, WI  
CONTRACT NO: 9073

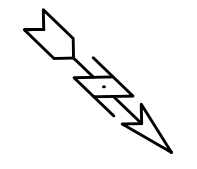
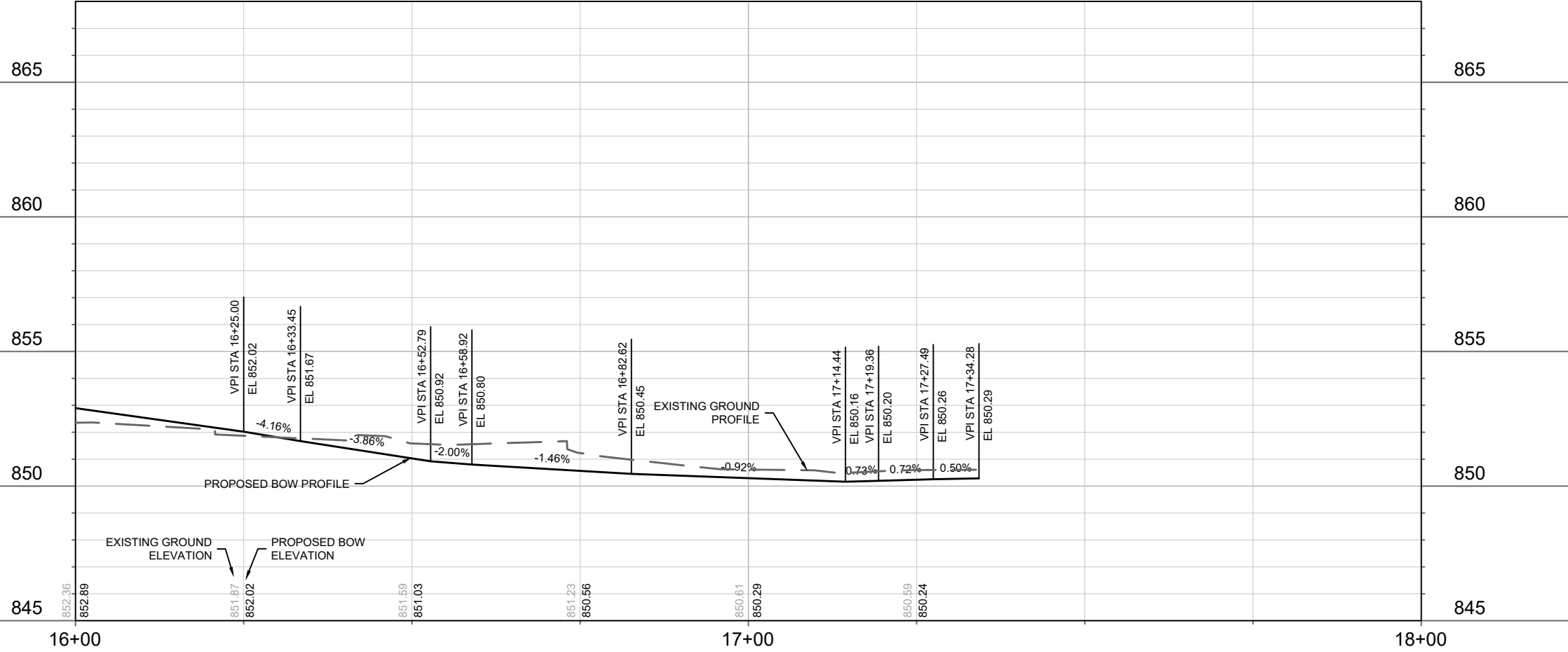
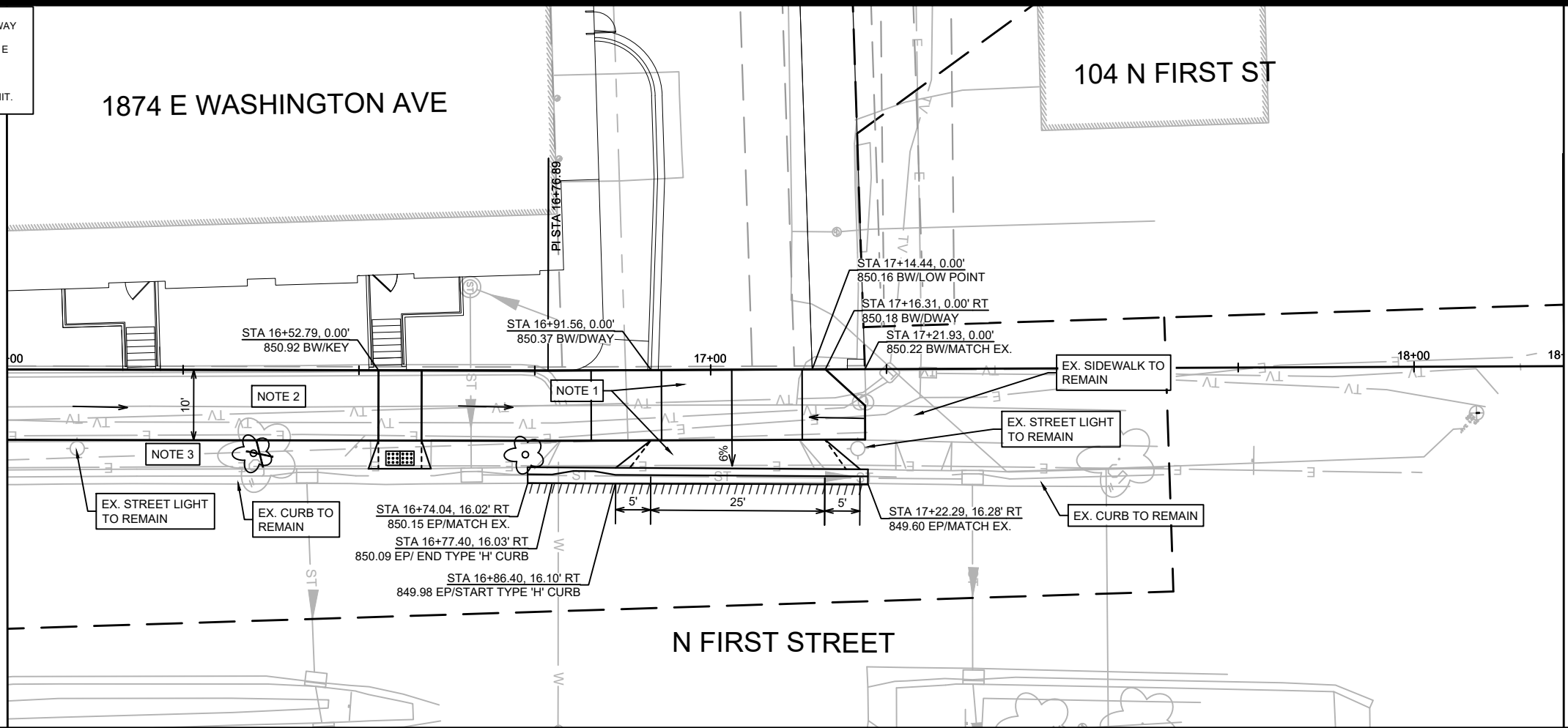
STREET PLAN AND PROFILE - N FIRST STREET  
1874 E WASHINGTON AVENUE  
M:\DESIGN\Projects\13771\CAD\Streets\13771\EN\PrP.dwg



- NOTES**
- 7" DRIVEWAY APRON AND SIDEWALK. SEE COMMERCIAL DRIVEWAY PERMIT NO. LNDUSE-2021-00153  
M:\DESIGN\Traffic\Maps\_Plans\ParkingLotPlans\TE\W\Washington Ave E 1858-1890\Washington Ave E 1858 Permit\_211201.pdf
  - 5" CONCRETE SIDEWALK.
  - 6" TOPSOIL, SEED & MAT.
  - REMOVE DRIVEWAY APRON PER COMMERCIAL DRIVEWAY PERMIT.

- LEGEND**
- /// - SAWCUT
  - ⊗ - TREE PROTECTION FENCING
  - - SIDEWALK DRAINAGE PATH

MATCH LINE 16+00.00



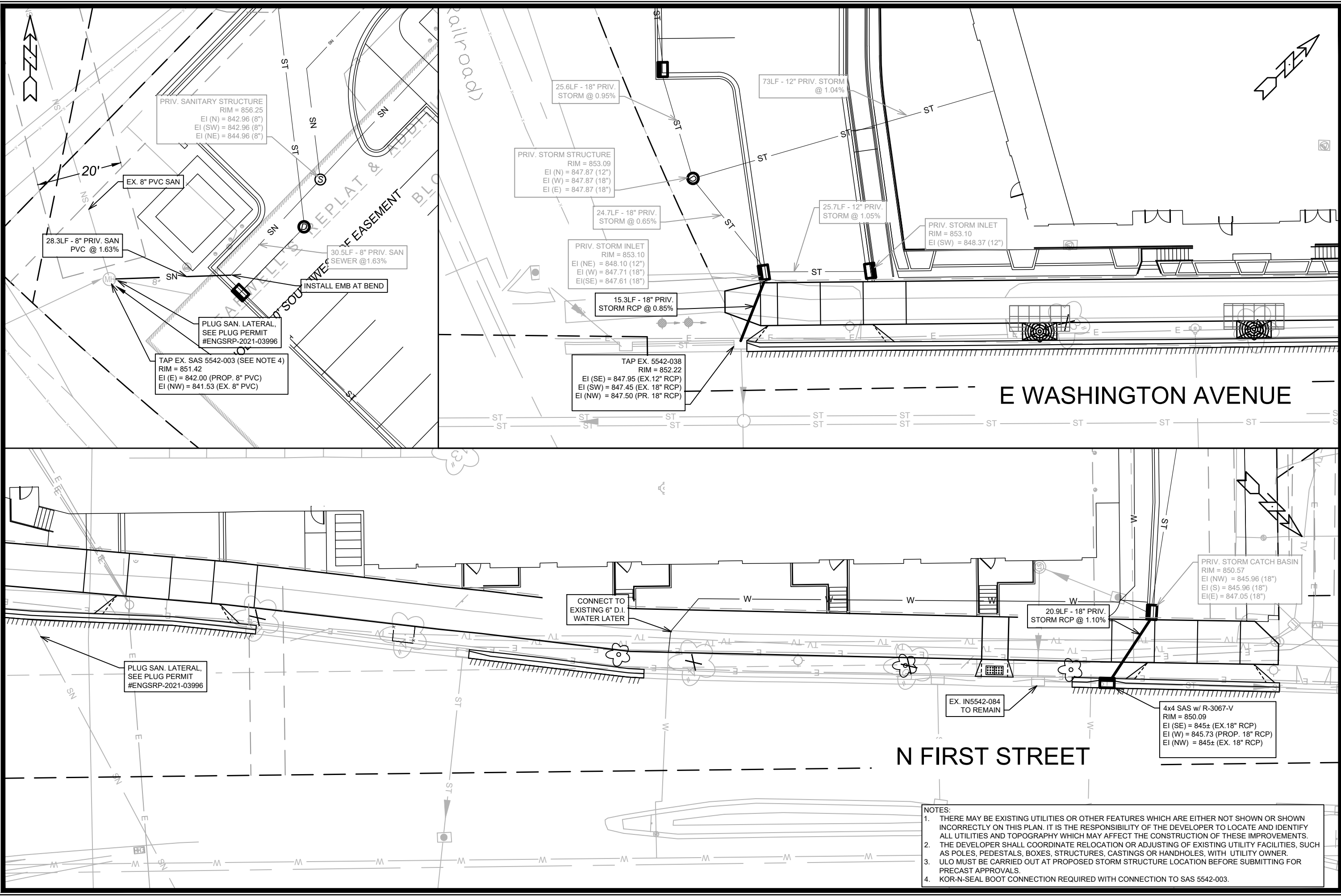
MARK	REVISION	DATE	BY
13771	13771	5/25/2023 1:02 PM	P-4

13771  
MADISON, WI  
9073  
CONTRACT NO:

STREET PLAN AND PROFILE - N FIRST STREET  
1874 E WASHINGTON AVENUE  
M:\DESIGN\Projects\13771\CAD\Streets\13771EN-PnP.dwg



13771  
P-4



- NOTES:**
1. THERE MAY BE EXISTING UTILITIES OR OTHER FEATURES WHICH ARE EITHER NOT SHOWN OR SHOWN INCORRECTLY ON THIS PLAN. IT IS THE RESPONSIBILITY OF THE DEVELOPER TO LOCATE AND IDENTIFY ALL UTILITIES AND TOPOGRAPHY WHICH MAY AFFECT THE CONSTRUCTION OF THESE IMPROVEMENTS.
  2. THE DEVELOPER SHALL COORDINATE RELOCATION OR ADJUSTING OF EXISTING UTILITY FACILITIES, SUCH AS POLES, PEDESTALS, BOXES, STRUCTURES, CASTINGS OR HANDHOLES, WITH UTILITY OWNER.
  3. ULO MUST BE CARRIED OUT AT PROPOSED STORM STRUCTURE LOCATION BEFORE SUBMITTING FOR PRECAST APPROVALS.
  4. KOR-N-SEAL BOOT CONNECTION REQUIRED WITH CONNECTION TO SAS 5542-003.

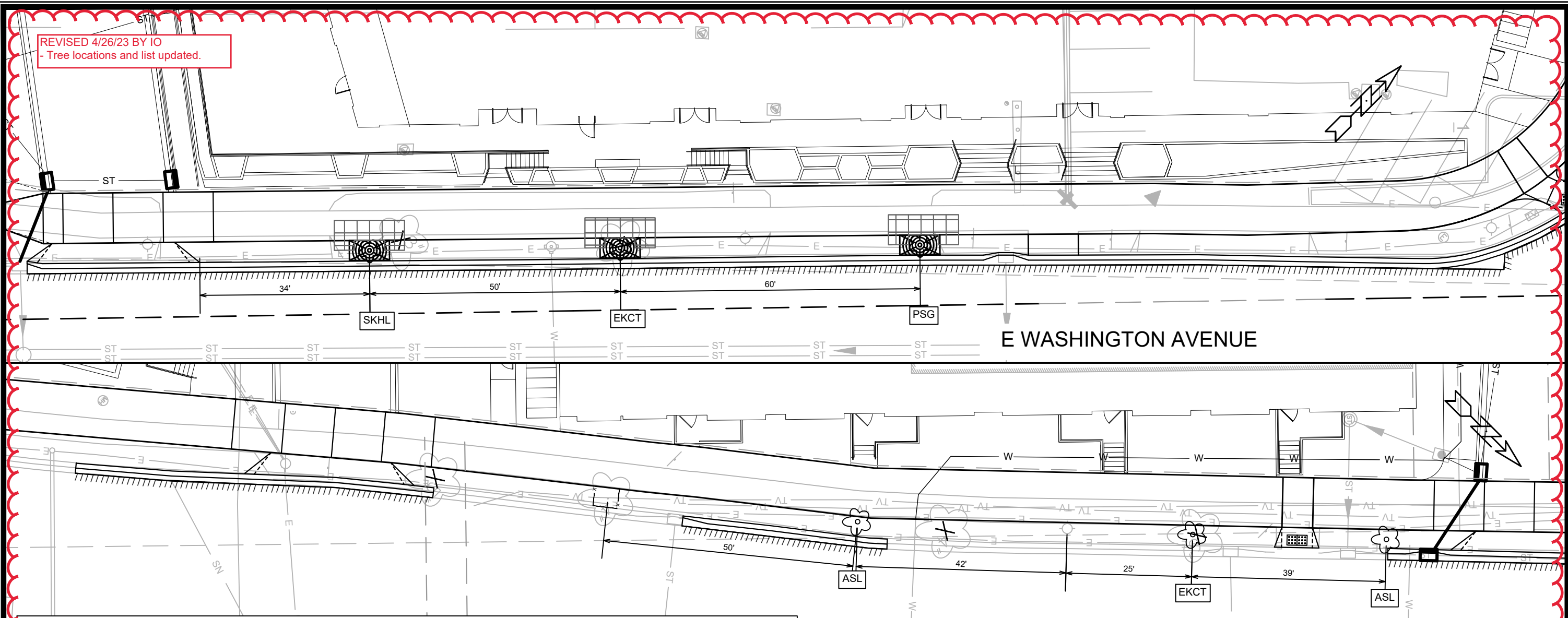
MARK	REVISION	DATE	BY
13771	U-1	5/25/2023 1:05 PM	U-1

13771  
 MADISON, WI  
 CONTRACT NO: 9073

UTILITIES PLAN  
 1874 E WASHINGTON AVENUE  
 M:\DESIGN\Projects\13771\CAD\Streets\13771\EN-UtilitiesPlan.dwg

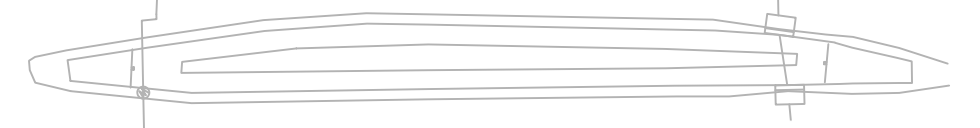
13771  
 U-1

REVISED 4/26/23 BY IO  
- Tree locations and list updated.



NOTES:

1. APPROXIMATE LIMITS OF TERRACE SUPPORT SYSTEM ARE SHOWN, FINAL LIMITS DEPENDENT ON MANUFACTURER SELECTED, DEVELOPER TO PROVIDE FINAL LAYOUT.
2. TERRACE SUPPORT SYSTEM SHALL BE TO A MINIMUM DEPTH OF 30" UNLESS OTHERWISE NOTED, DEPTH MAY BE ACHIEVED WITH A SINGLE LAYER OF CELLS OR STACKED IN 2 LAYERS.
3. PROVIDE MINIMUM 3'X6" OPENING FOR TREE PLANTING WITH 12" ROOT BARRIER AROUND OPENING.
4. PERIMETER OF SUPPORT SYSTEM SHALL BE ENCLOSED WITH GEOGRID PER MANUFACTURER'S INSTALLATION SPECIFICATIONS.
5. CITY FORESTRY WILL ISSUE A STREET TREE REMOVAL PERMIT FOR 5 TREES: TWO 6" & ONE 5" PEAR ALONG N FIRST ST FOR NEW DRIVEWAY INSTALLATION & 4" HACKBERRY AND 3" PEAR ALONG E WASHINGTON AVE FOR GRADE CHANGES. THE CONTRACTOR SHALL CONTACT CITY FORESTRY AT (608)266-4816 TO OBTAIN PERMIT.
6. CONTRACTOR SHALL CONTACT CITY FORESTRY AT (608) 266-4816 TO SCHEDULE INSPECTION AND APPROVAL OF NURSERY TREE STOCK AND REVIEW PLANTING SPECIFICATIONS WITH THE LANDSCAPER AT LEAST ONE WEEK PRIOR TO STREET TREE PLANTING.
7. THE CONTRACTOR SHALL CONTACT CITY FORESTRY AT (608) 266-4816 TO IDENTIFY AND LOCATE UNDERGROUND CONFLICTS (UTILITIES, VAULTS, CONDUIT) OR OTHER UNDERGROUND OBSTRUCTIONS AND DETERMINE GRADE LOCATIONS BEFORE TERRACE SUPPORT SYSTEM INSTALLATION. THE CONTRACTOR WILL BE REQUIRED TO OBTAIN THE GRATE, MATCHING FRAME AND TREE GUARD. TREE GRATE TYPE AND MATCHING FRAME: NEENAH 4X8 (R-8815-A). TREE GUARD NEENAH (R-8501-4818).
10. SECTION 107.13(G) OF CITY OF MADISON STANDARD SPECIFICATIONS FOR PUBLIC WORKS CONSTRUCTION (WEBSITE: [HTTPS://WWW.CITYOFMADISON.COM/BUSINESS/PW/SPECS.CFM](https://www.cityofmadison.com/business/pw/specs.cfm)) ADDRESSES SOIL COMPACTION NEAR STREET TREES AND SHALL BE FOLLOWED BY CONTRACTOR. THE STORAGE OF PARKED VEHICLES, CONSTRUCTION EQUIPMENT, BUILDING MATERIALS, REFUSE, EXCAVATED SPOILS OR DUMPING OF POISONOUS MATERIALS ON OR AROUND TREES AND ROOTS WITHIN FIVE (5) FEET OF THE TREE OR WITHIN THE PROTECTION ZONE IS PROHIBITED. ADD AS A NOTE
11. ON THIS PROJECT, STREET TREE PROTECTION ZONE FENCING IS REQUIRED. THE FENCING SHALL BE ERECTED BEFORE THE DEMOLITION, GRADING OR CONSTRUCTION BEGINS. THE FENCE SHALL INCLUDE THE ENTIRE WIDTH OF TERRACE AND, EXTEND AT LEAST 5 FEET ON BOTH SIDES OF THE OUTSIDE EDGE OF THE TREE TRUNK. DO NOT REMOVE THE FENCING TO ALLOW FOR DELIVERIES OR EQUIPMENT ACCESS THROUGH THE TREE PROTECTION ZONE. ADD AS A NOTE
12. STREET TREE PRUNING SHALL BE COORDINATED WITH CITY FORESTRY AT A MINIMUM OF TWO WEEKS PRIOR TO THE START OF CONSTRUCTION FOR THIS PROJECT. CONTACT CITY FORESTRY AT (608)266-4816. ALL PRUNING SHALL FOLLOW THE AMERICAN NATIONAL STANDARDS INSTITUTE (ANSI) A300 - PART 1 STANDARDS FOR PRUNING. ADD AS A NOTE



- LEGEND
- APPROX. LIMITS OF TERRACE SUPPORT SYSTEM
  - TREE REMOVAL
  - TREE PROTECTION FENCING
  - TREE GRATE

Street Tree Plant List						
Code	Quantity	Size	Root	Common Name	Botanical Name	
PSG	1	2"	B&B	Princeton Sentry Ginkgo	Ginkgo biloba 'Princeton Sentry'	
EKLT	2	2"	B&B	Kentucky Coffeetree 'Espresso'	Gymnocladus dioica 'Espresso'	
SKHL	1	2"	B&B	Street Keeper Honeylocust	Gleditsia triacanthos 'Draves'	
ASL	2	2"	B&B	American Sentry Linden	Tilia americana 'McKSentry'	

13771  
MADISON, WI  
CONTRACT NO.: 9073

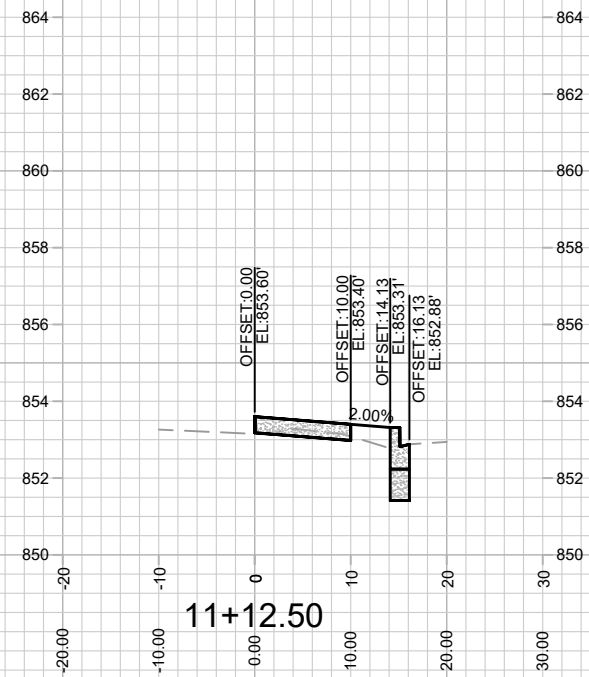
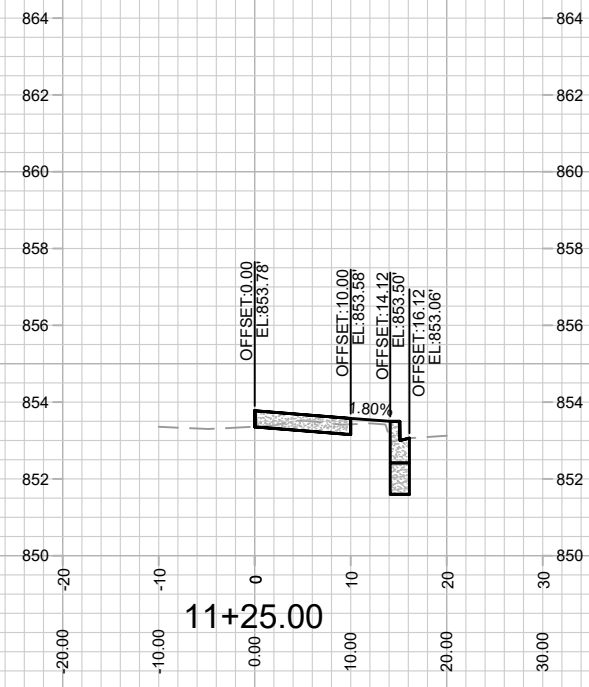
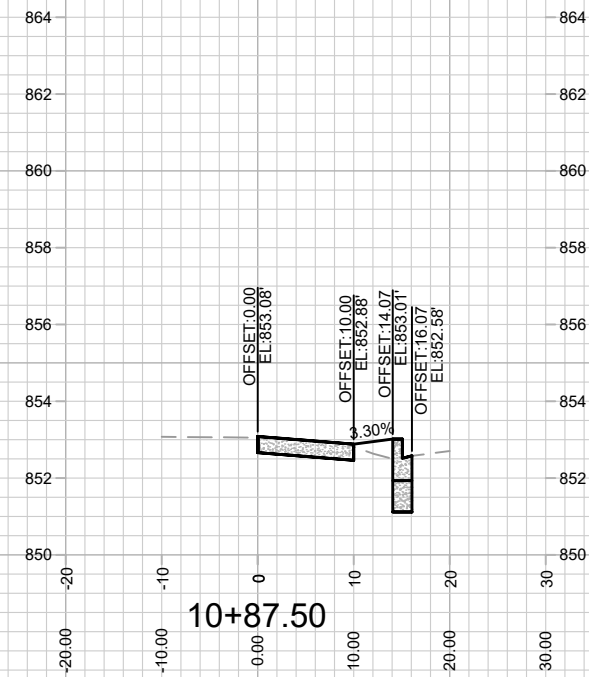
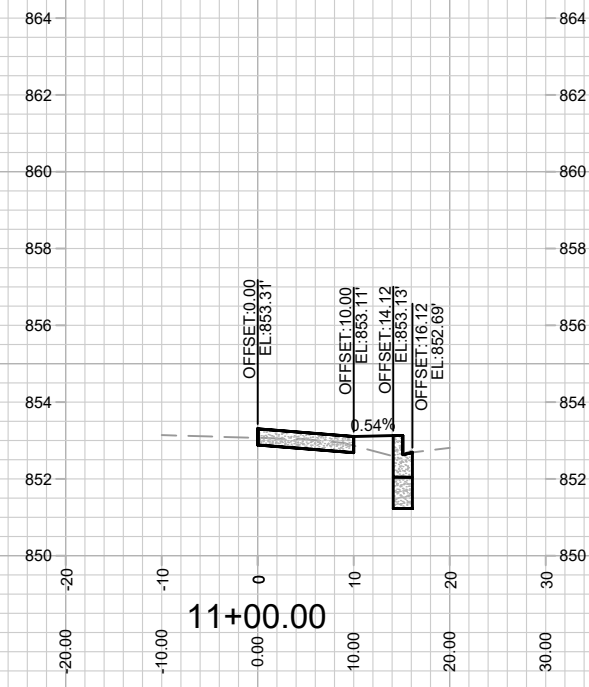
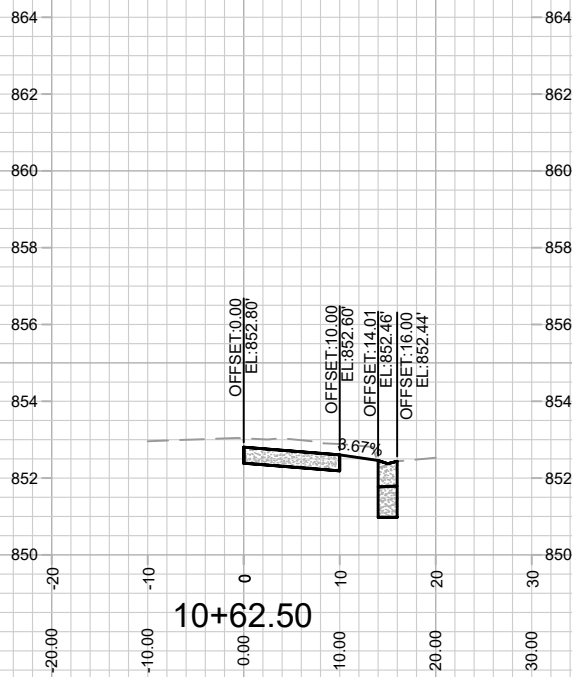
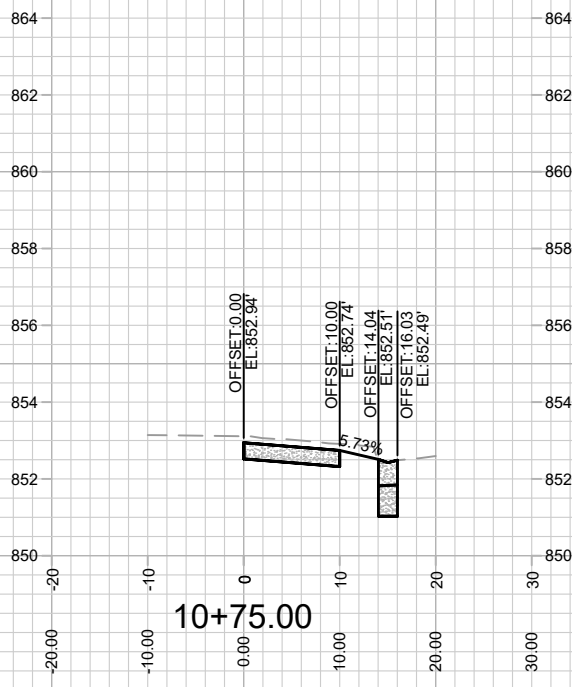
LANDSCAPE PLAN  
1874 E WASHINGTON AVENUE

M:\DESIGN\Projects\13771\CAD\Streets\13771EN-LandscapePlan.dwg

13771  
L-1

MARK	REVISION	DATE	BY

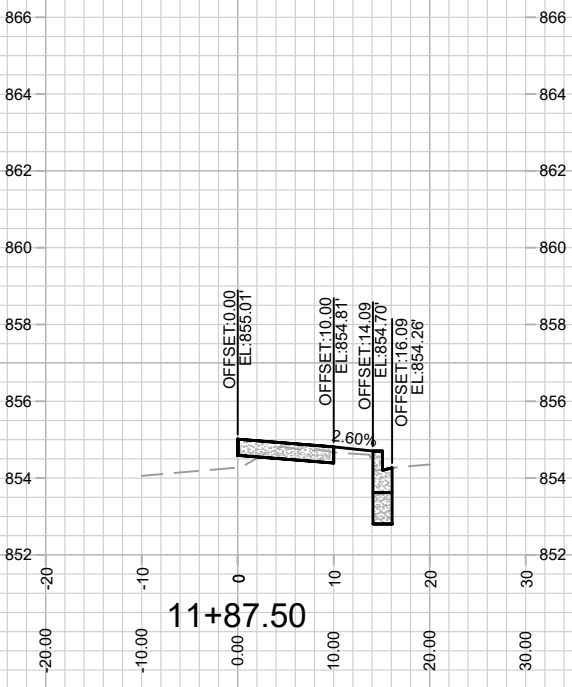
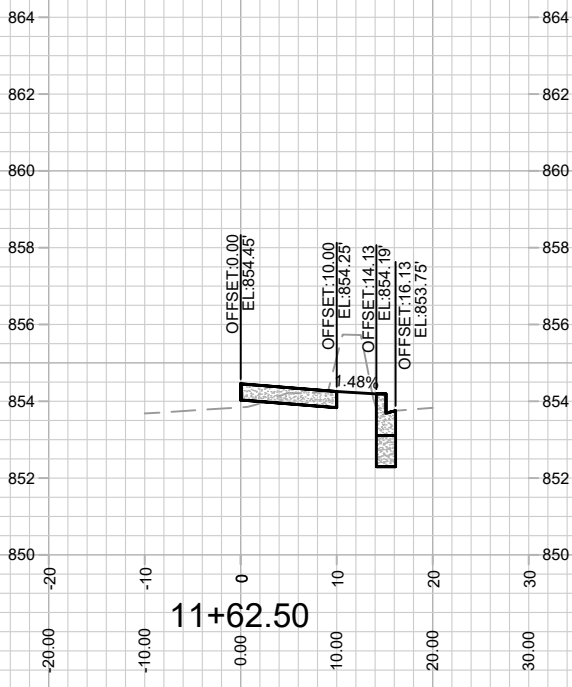
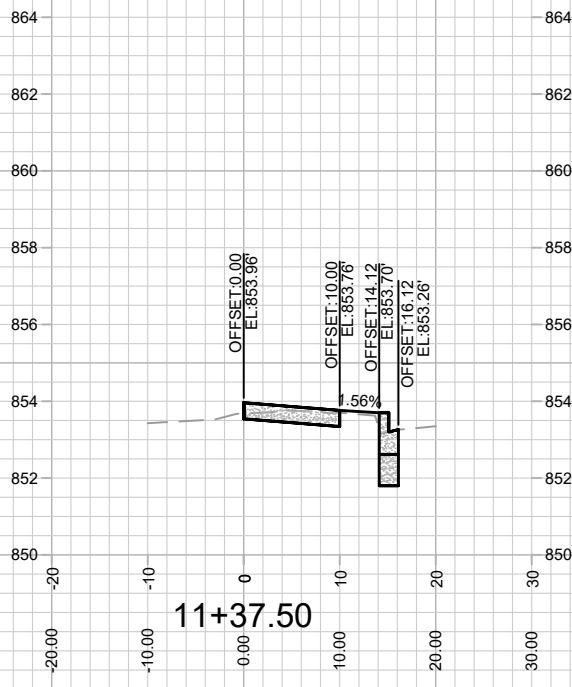
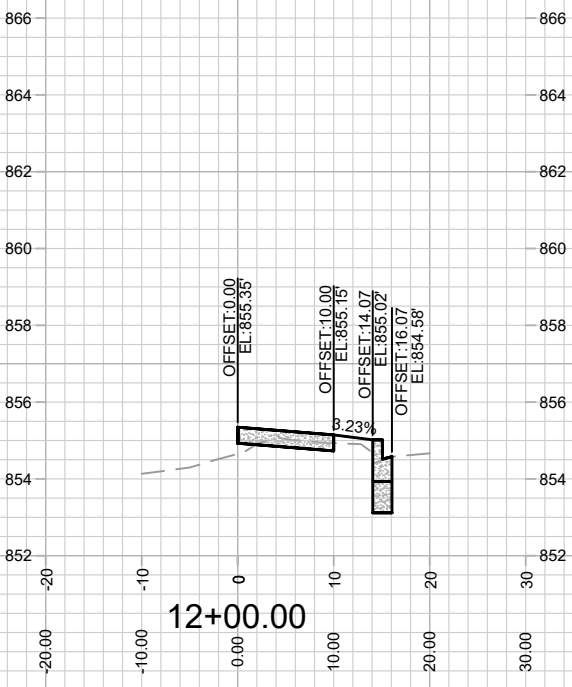
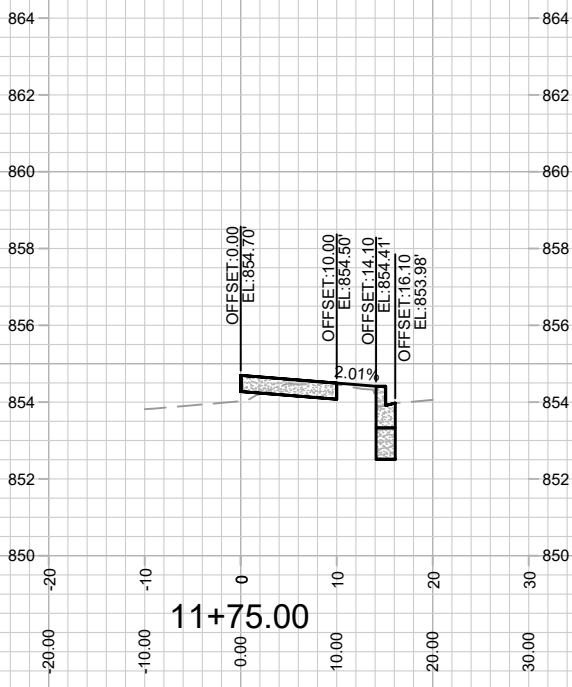
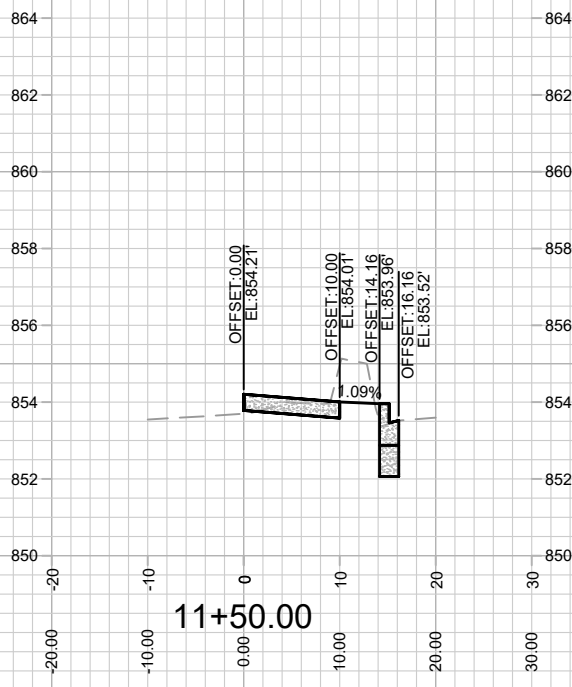
Scale: 1/20  
Date: 5/26/2023 12:53 PM  
Designed By: IO  
13771



13771  
X-1

CROSS SECTIONS  
1874 E WASHINGTON AVENUE  
M:\DESIGN\Projects\13771\CAD\Streets\13771EN-AIP\Prof&Corridor.dwg

13771	DATE	BY
REVISION	DATE	BY
Designed By: IO	Date: 06/20/22 1:15 PM	Scale: 1" = 20'
MARK	13771	X-1



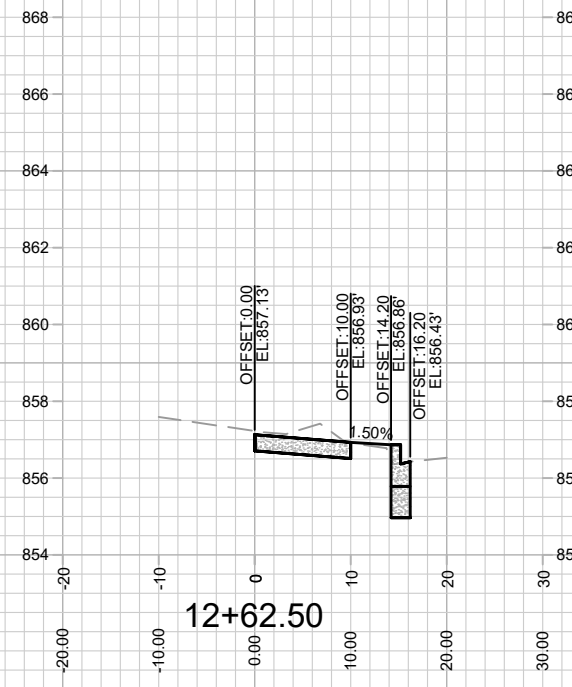
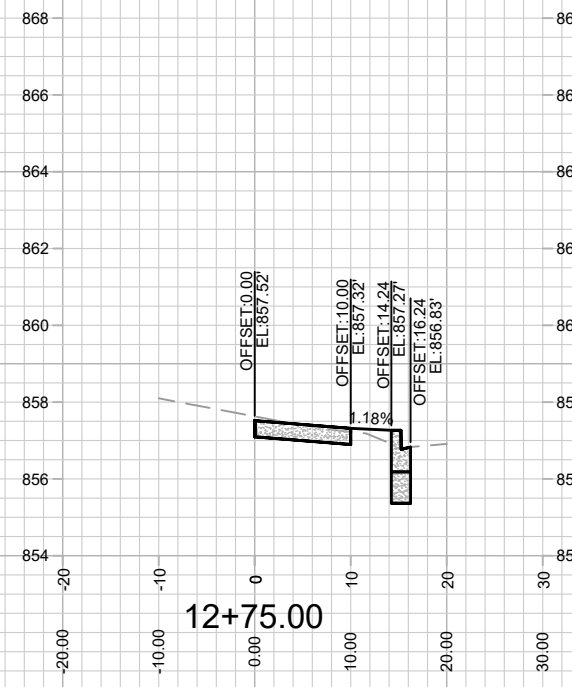
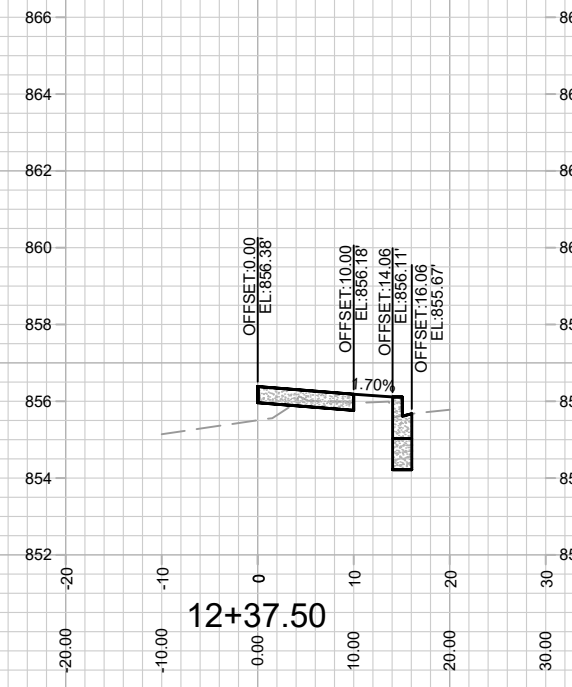
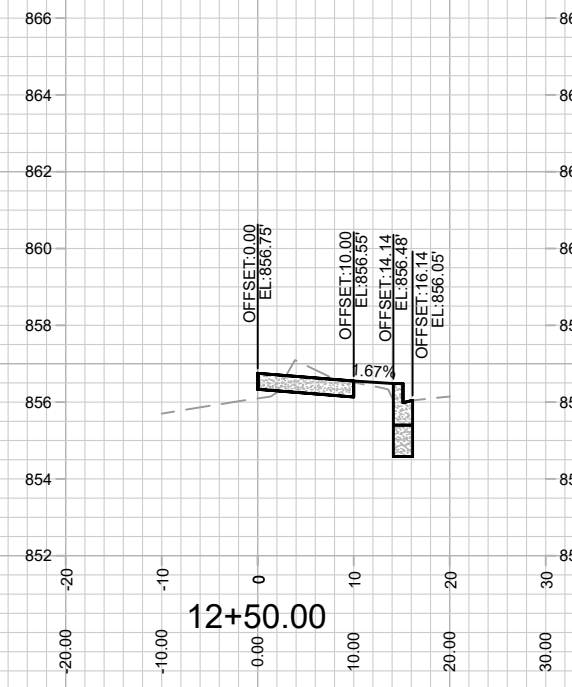
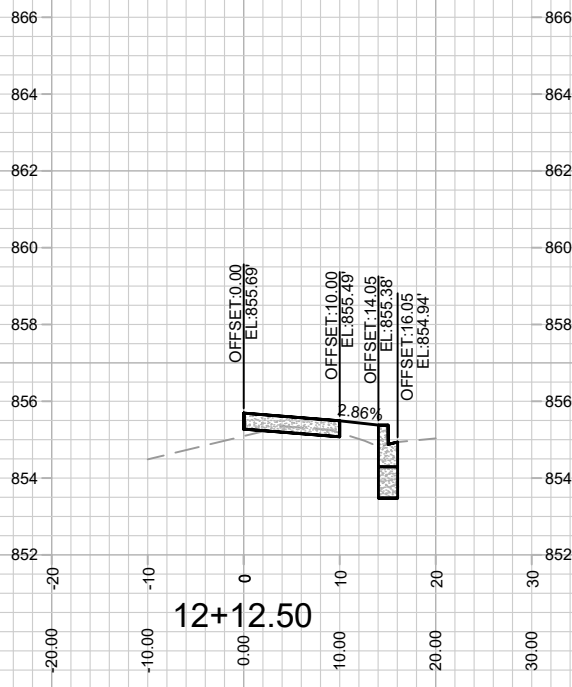
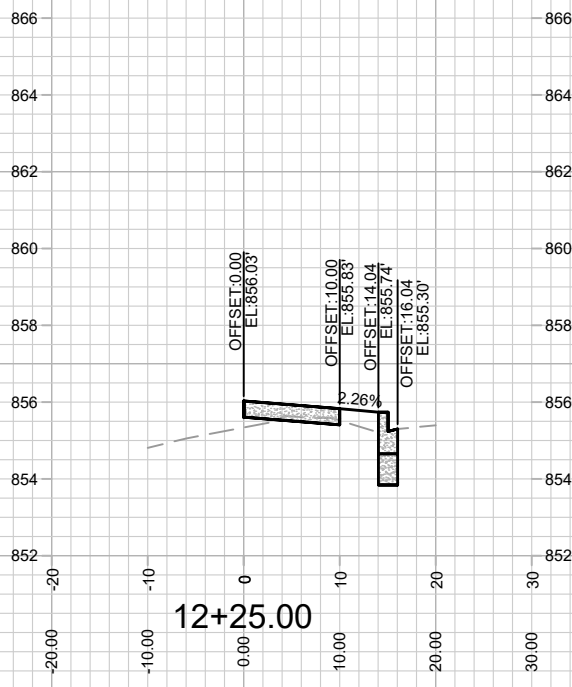
MARK	REVISION	DATE	BY

Designed By: ID  
Date: 06/20/22 1:15 PM  
Scale: 1" = 20'  
13771 X-2

13771  
MADISON, WI  
CONTRACT NO: 9073

CROSS SECTIONS  
1874 E WASHINGTON AVENUE  
M:\DESIGN\Projects\13771\CAD\Streets\13771EN-AIProf&Corridor.dwg





MARK	REVISION	DATE	BY

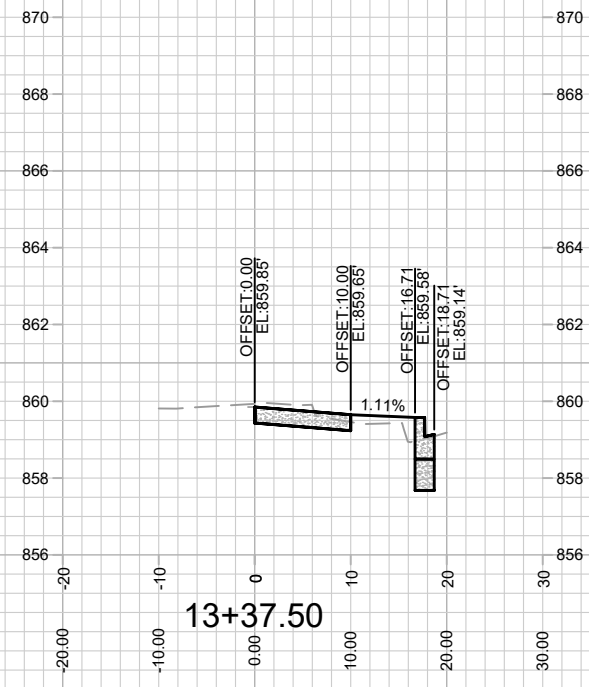
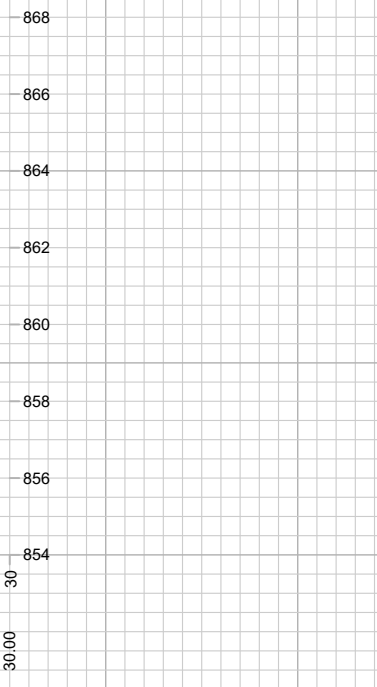
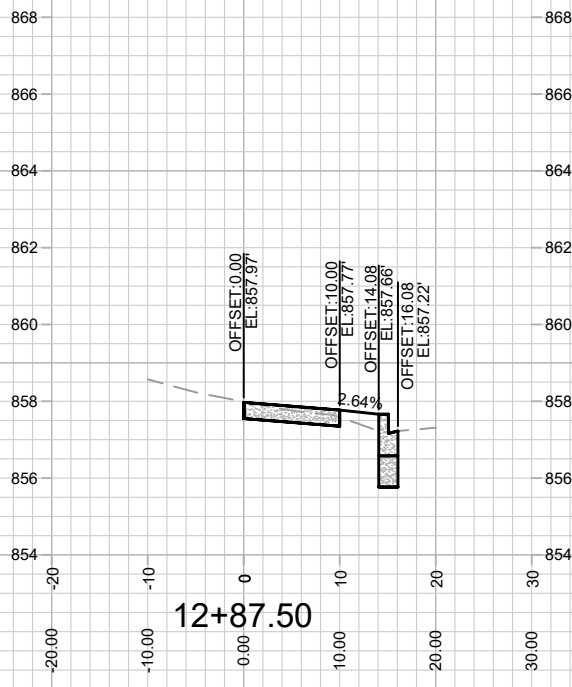
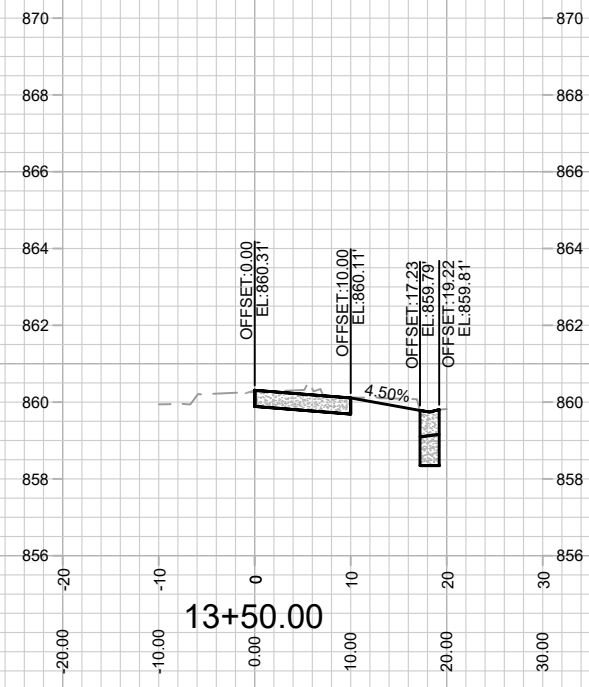
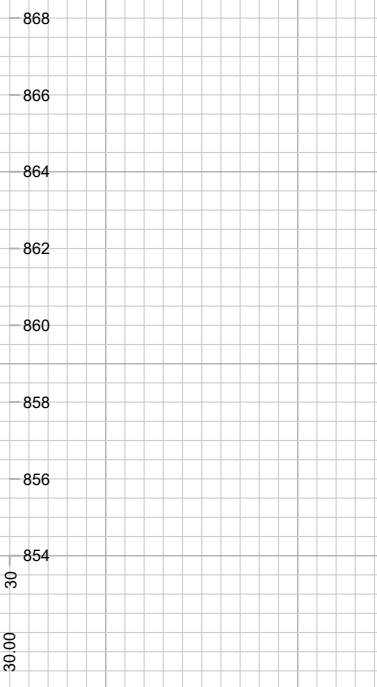
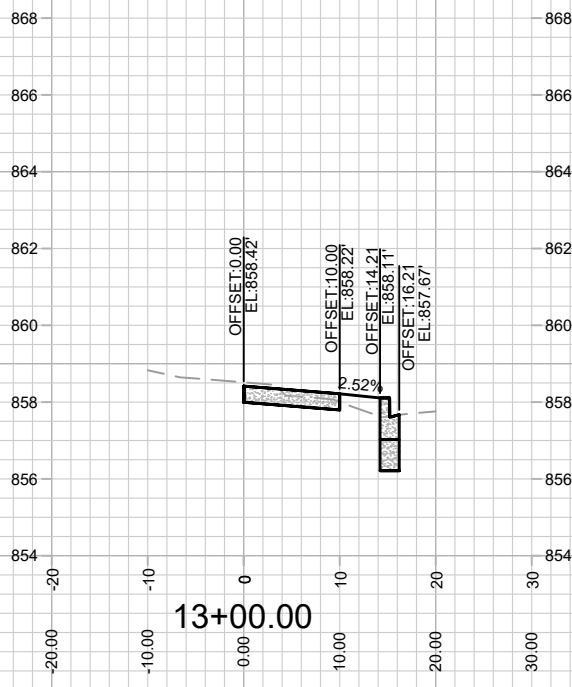
13771  
 MADISON, WI  
 CONTRACT NO: 9073

CROSS SECTIONS  
 1874 E WASHINGTON AVENUE  
 M:\DESIGN\Projects\13771\CAD\Streets\13771EN-AIIProf&Corridor.dwg



13771  
 X-3

Designed By: ID  
 Date: 06/20/22 1:15 PM  
 Scale: 1" = 20'  
 X-3

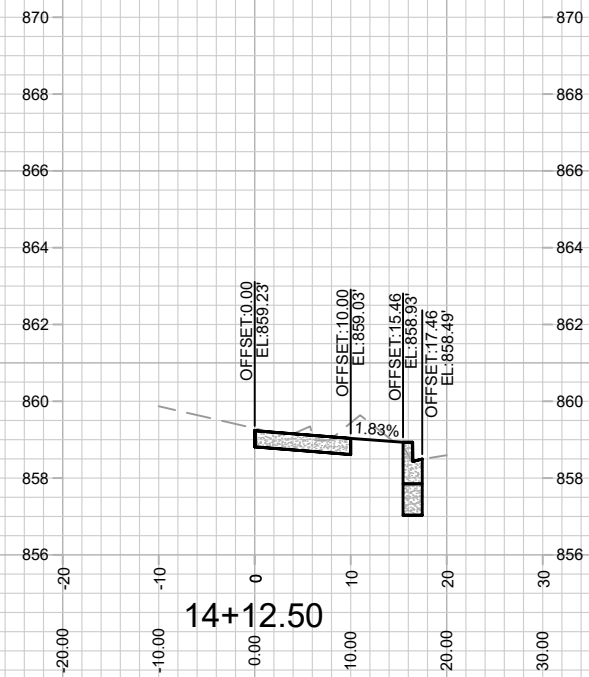
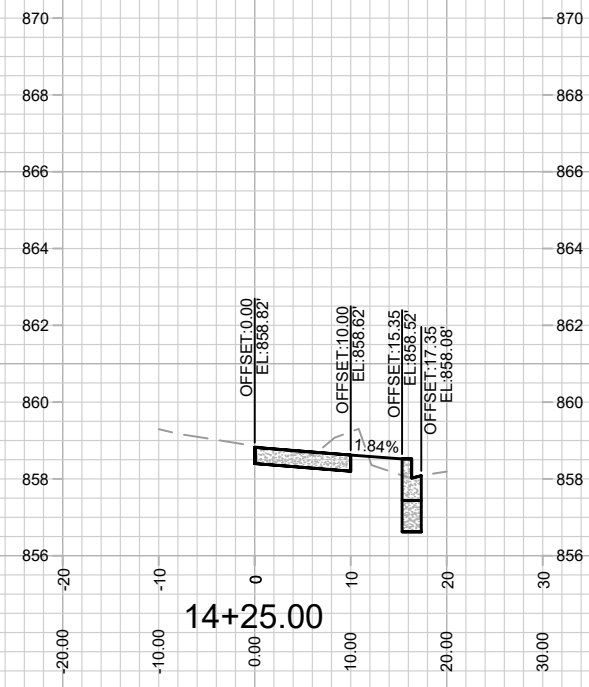
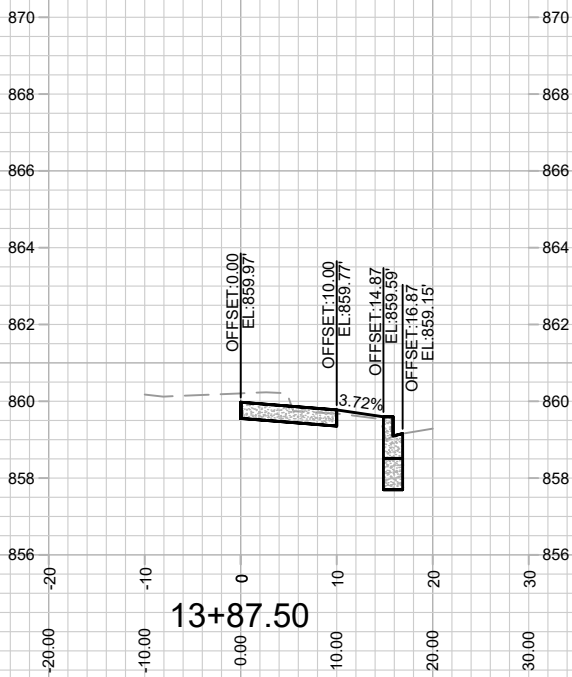
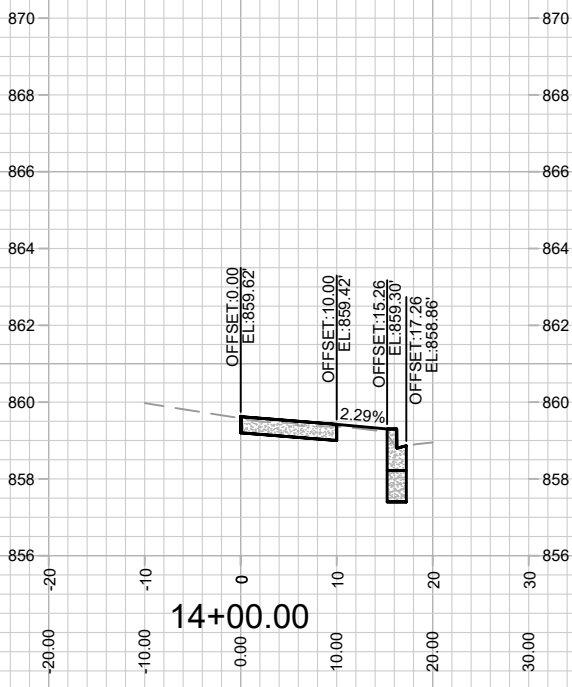
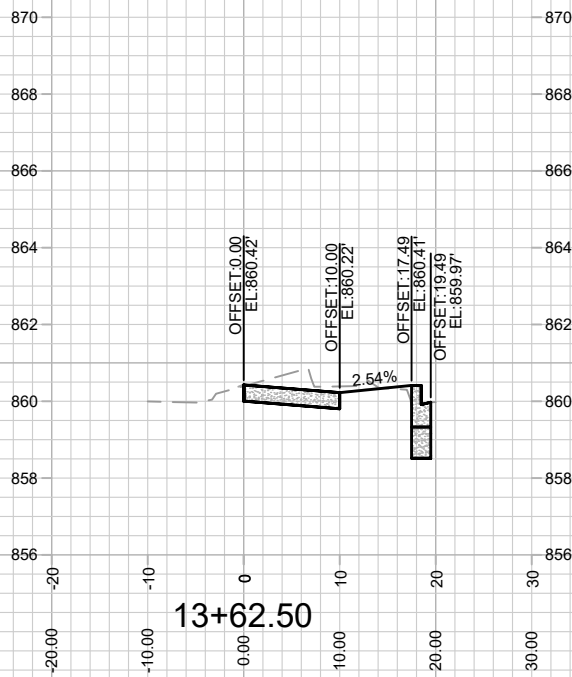
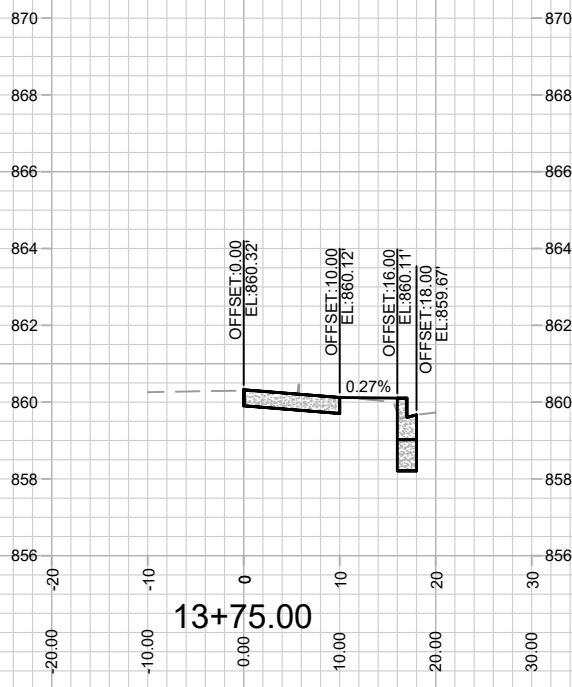


MARK	REVISION	DATE	BY

Designed By: ID  
Date: 06/20/22 1:15 PM  
Scale: 1" = 20'  
13771  
X-4

13771  
MADISON, WI  
CONTRACT NO: 9073

CROSS SECTIONS  
1874 E WASHINGTON AVENUE  
M:\DESIGN\Projects\13771\CAD\Streets\13771EN-A\Prof&Corridor.dwg



MARK	REVISION	DATE	BY

13771  
MADISON, WI  
9073

13771  
MADISON, WI  
9073

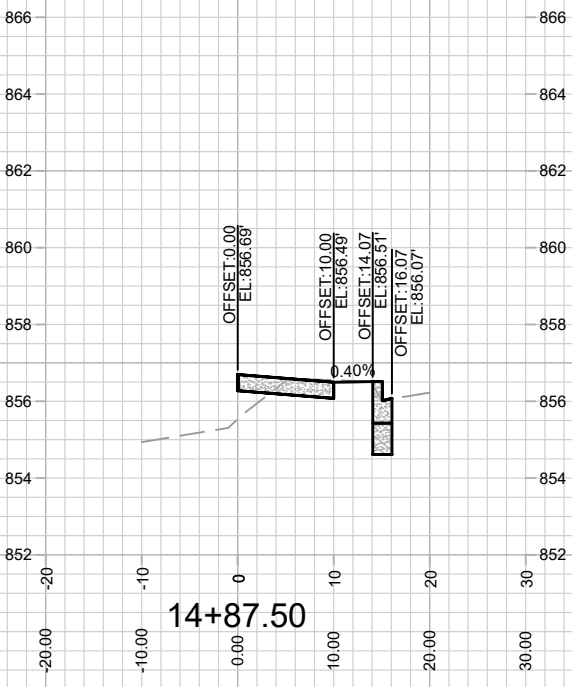
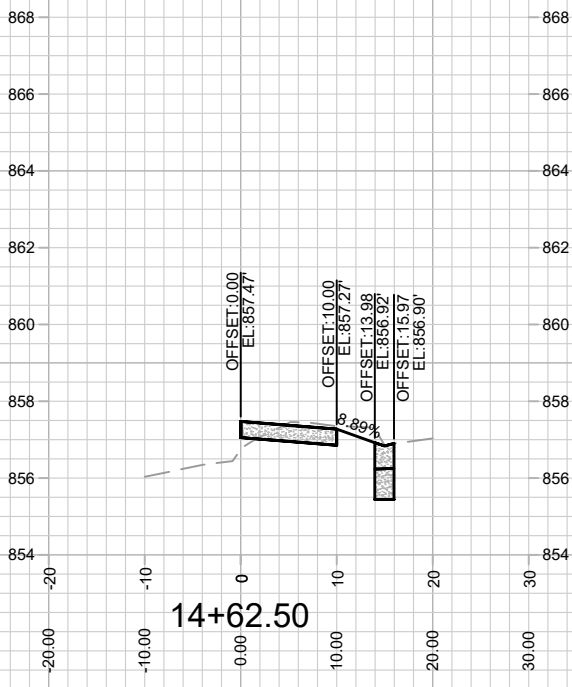
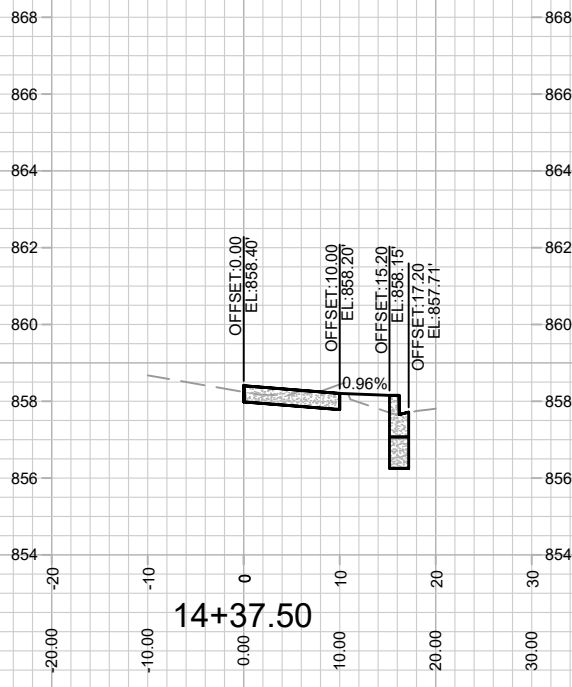
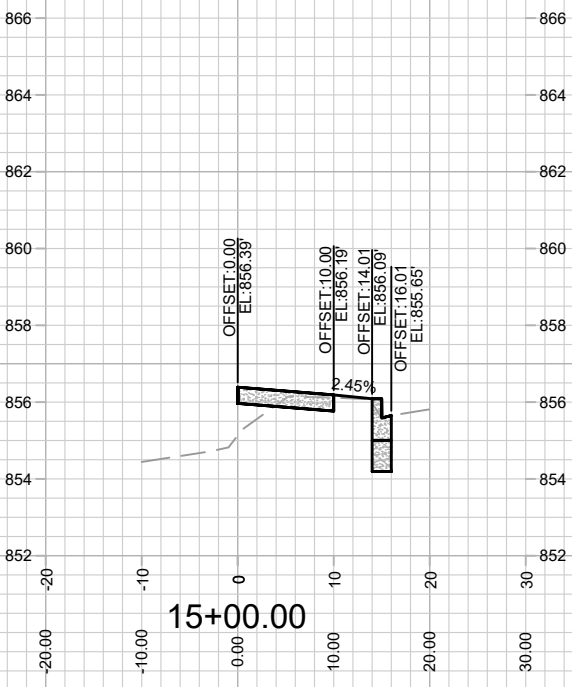
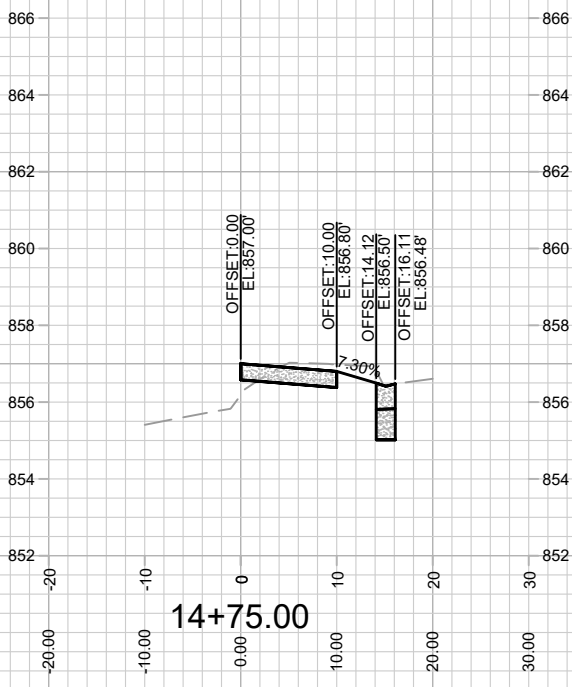
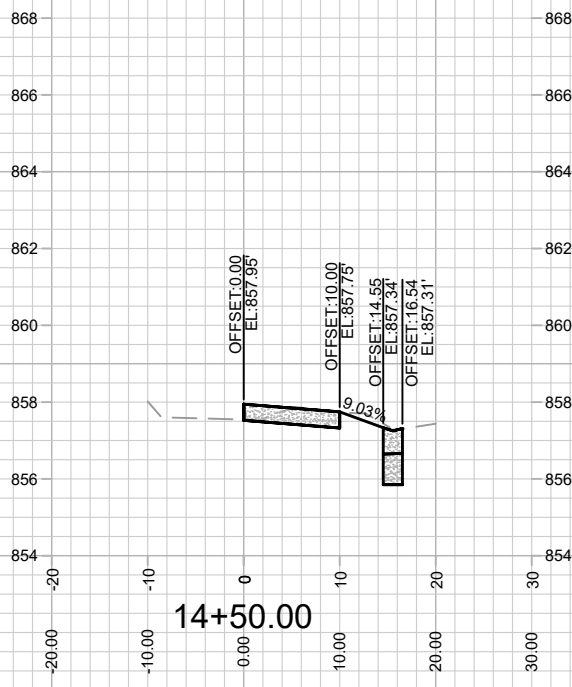


13771  
X-5

CONTRACT NO: 13771

M:\DESIGN\Projects\13771\CAD\Streets\13771EN-AIIPof&Corridor.dwg

Scale: 1" = 20'

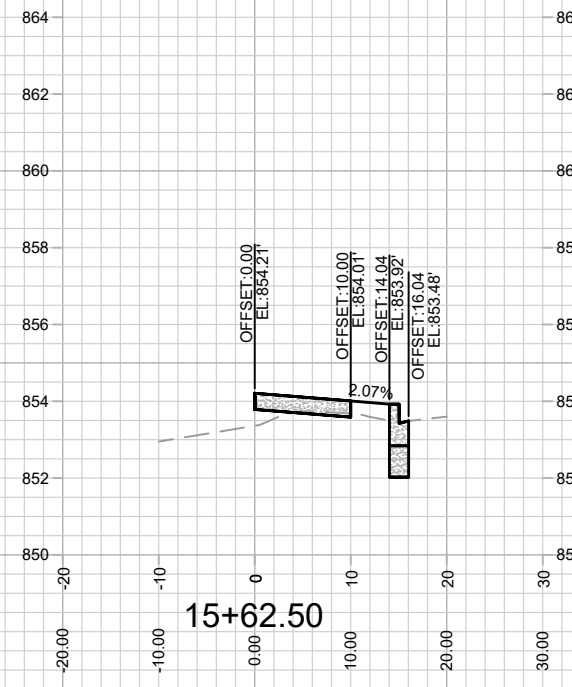
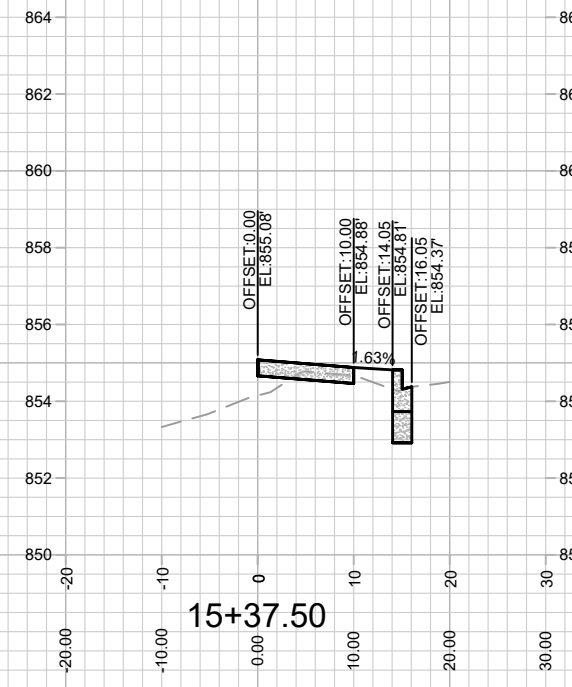
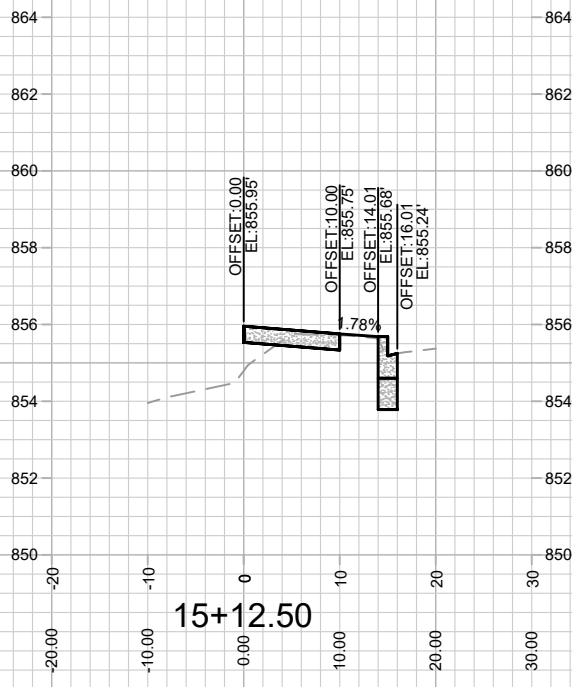
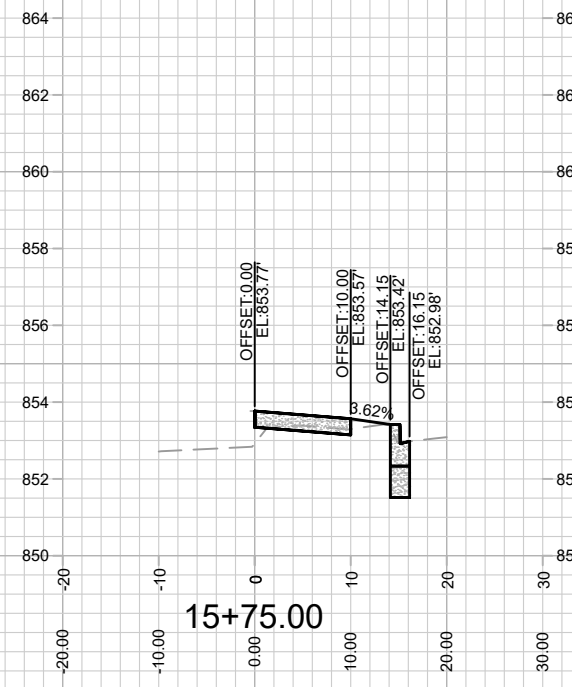
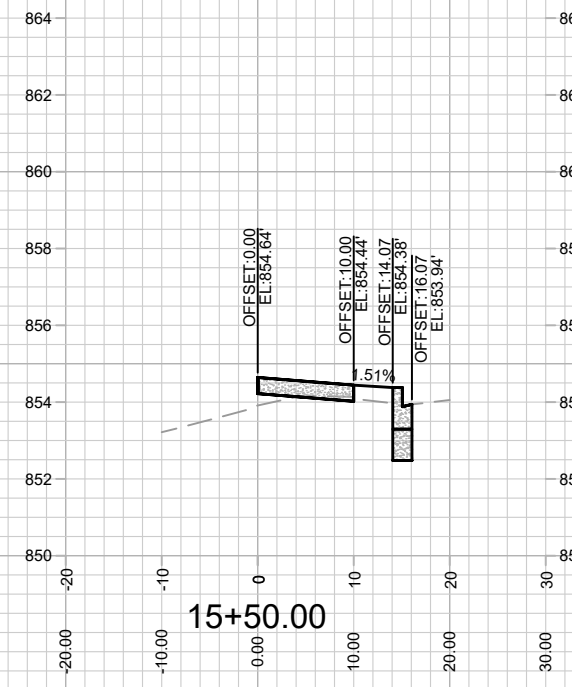
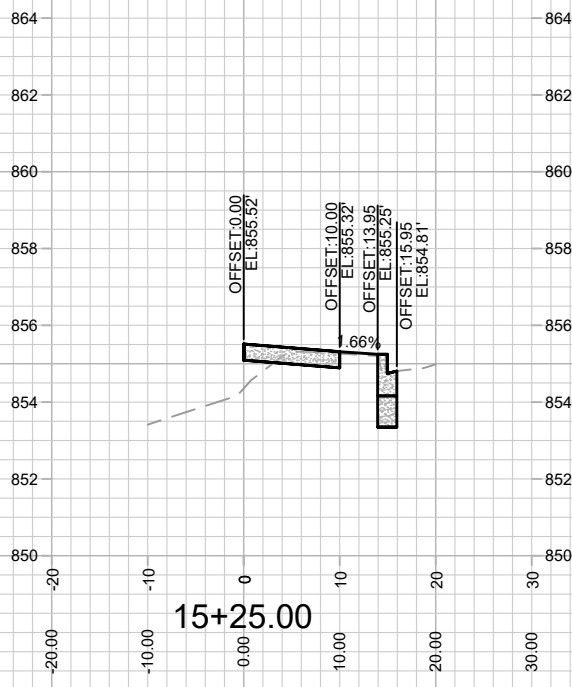


MARK	REVISION	DATE	BY

Designed By: ID  
Date: 06/20/22 1:15 PM  
Scale: 1" = 20'  
13771  
X-6

13771  
MADISON, WI  
9073  
CONTRACT NO:

CROSS SECTIONS  
1874 E WASHINGTON AVENUE  
M:\DESIGN\Projects\13771\CAD\Streets\13771EN-AIIPof&Corridor.dwg



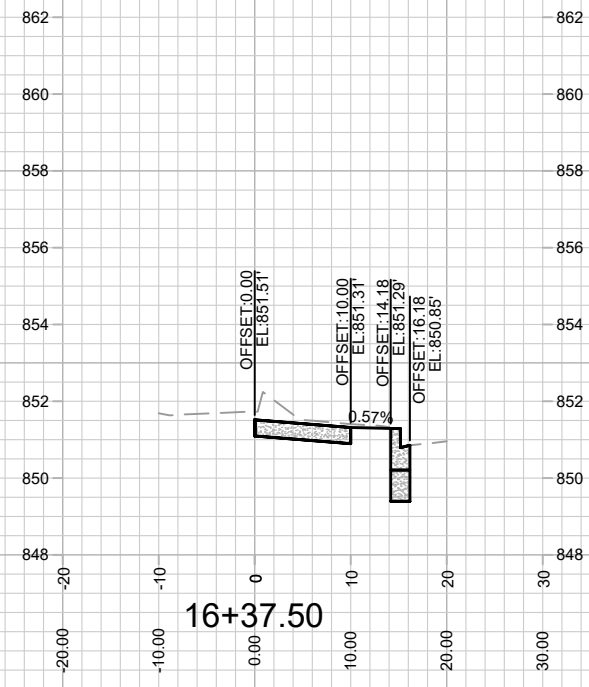
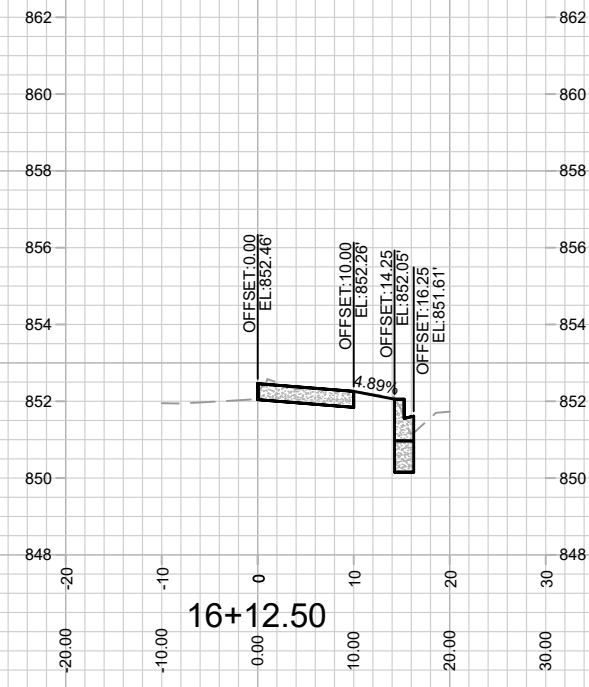
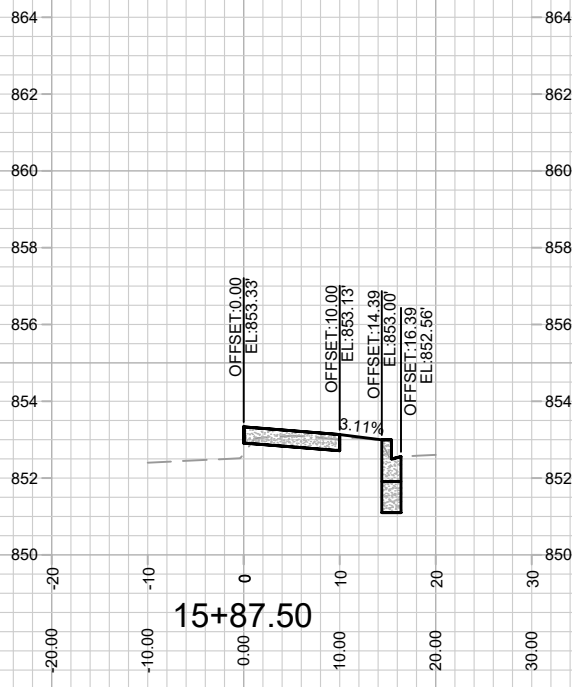
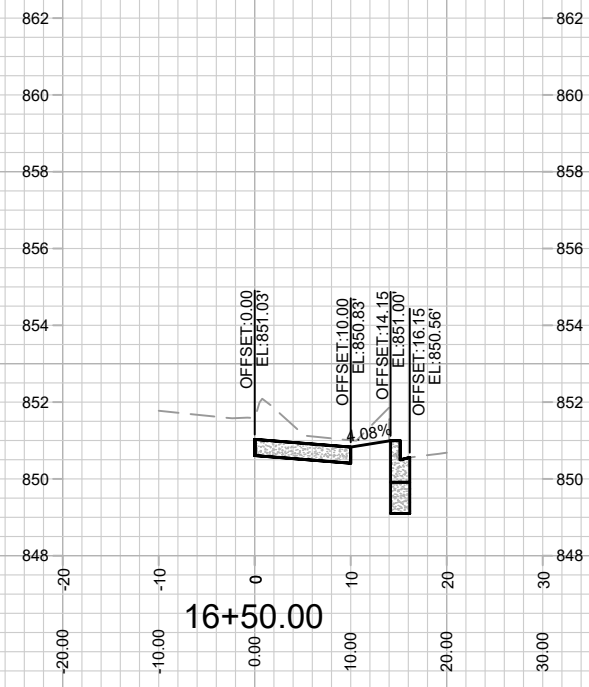
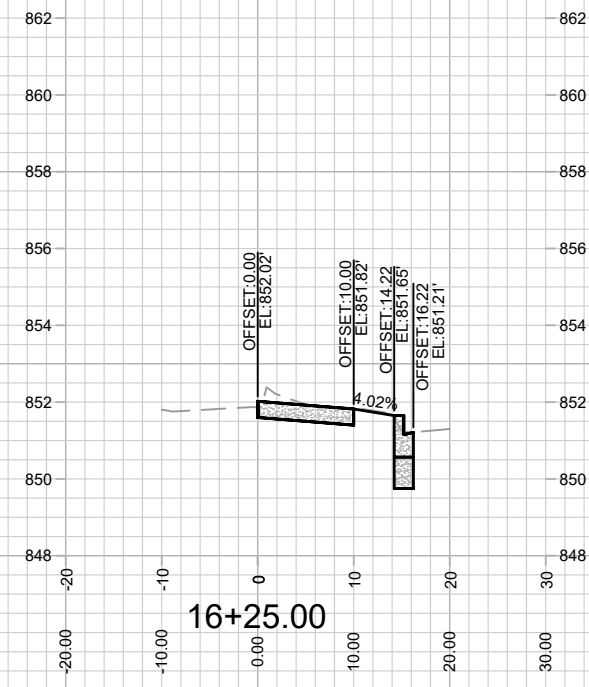
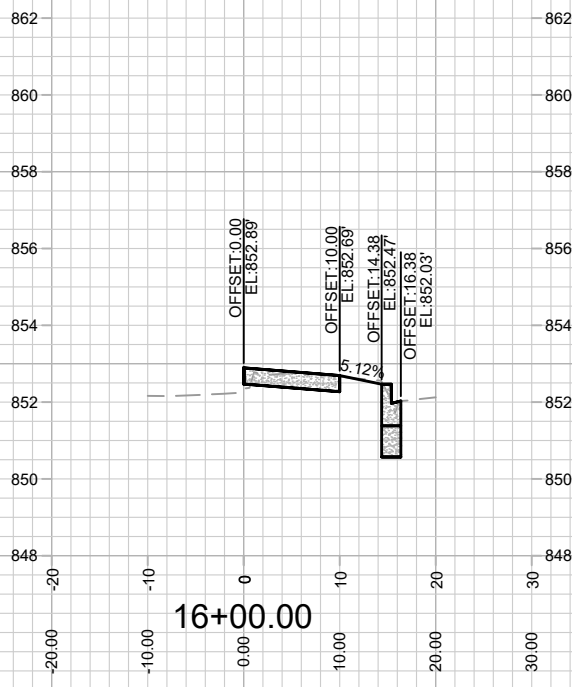
MARK	REVISION	DATE	BY

13771  
 MADISON, WI  
 9073  
 CONTRACT NO:

CROSS SECTIONS  
 1874 E WASHINGTON AVENUE  
 M:\DESIGN\Projects\13771\CAD\Streets\13771EN-AIIPof&Corridor.dwg



13771  
 X-7



MARK	REVISION	DATE	BY

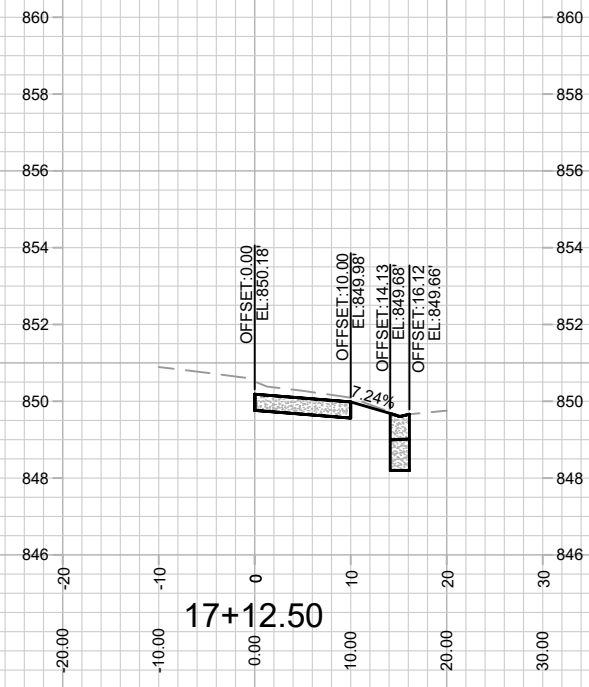
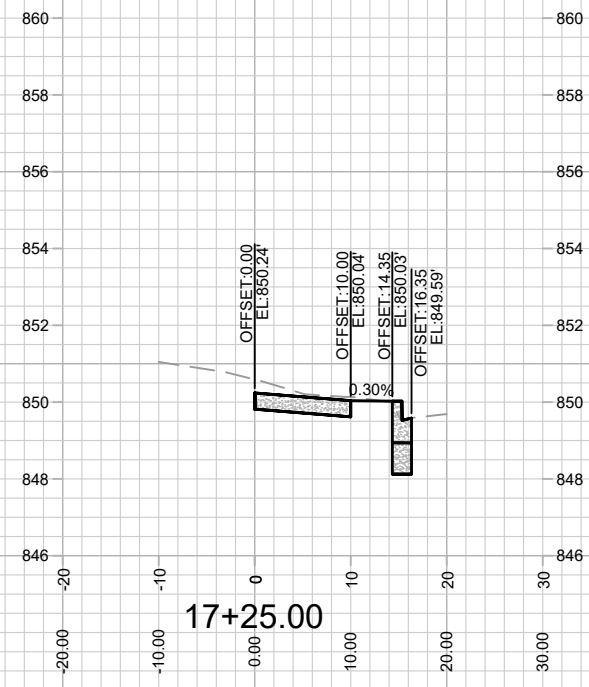
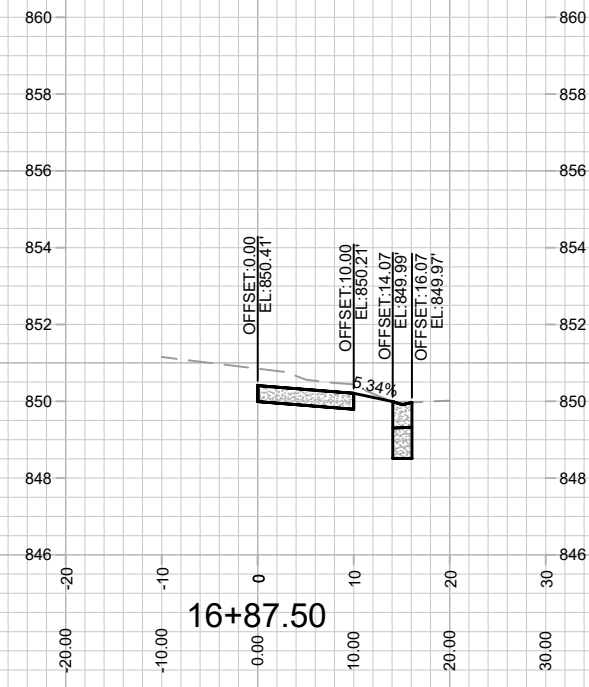
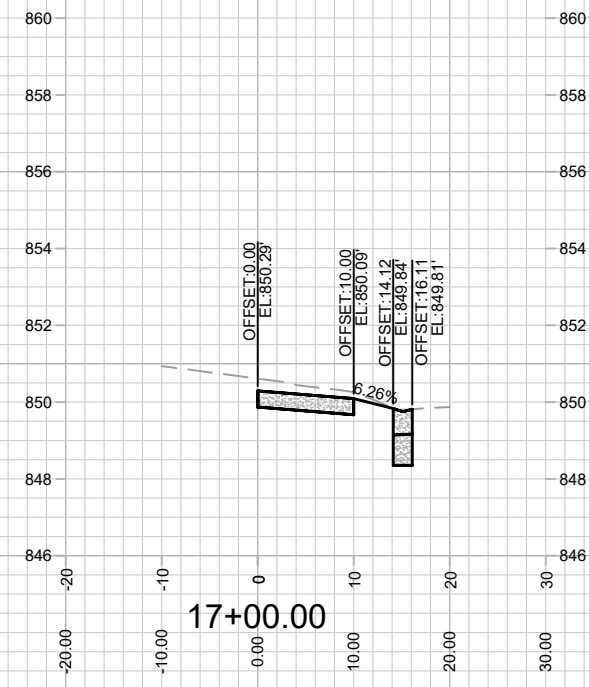
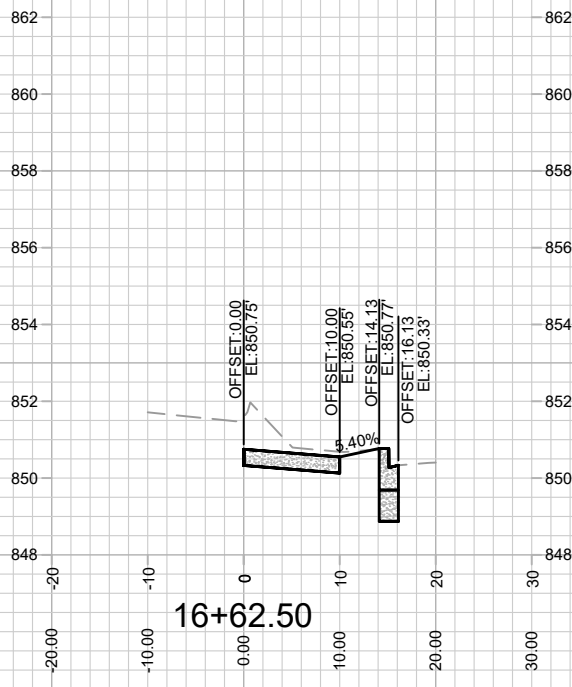
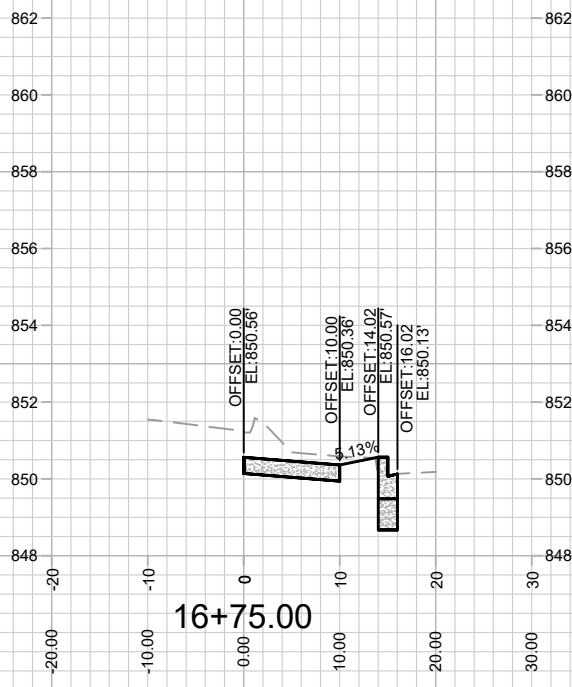
13771  
MADISON, WI  
CONTRACT NO: 9073

CROSS SECTIONS  
1874 E WASHINGTON AVENUE  
M:\DESIGN\Projects\13771\CAD\Streets\13771EN-AIIPof&Corridor.dwg



13771  
X-8





MARK	REVISION	DATE	BY

13771  
 MADISON, WI  
 9073  
 CONTRACT NO:

CROSS SECTIONS  
 1874 E WASHINGTON AVENUE  
 M:\DESIGN\Projects\13771\CAD\Streets\13771EN-A\Prof&Corridor.dwg

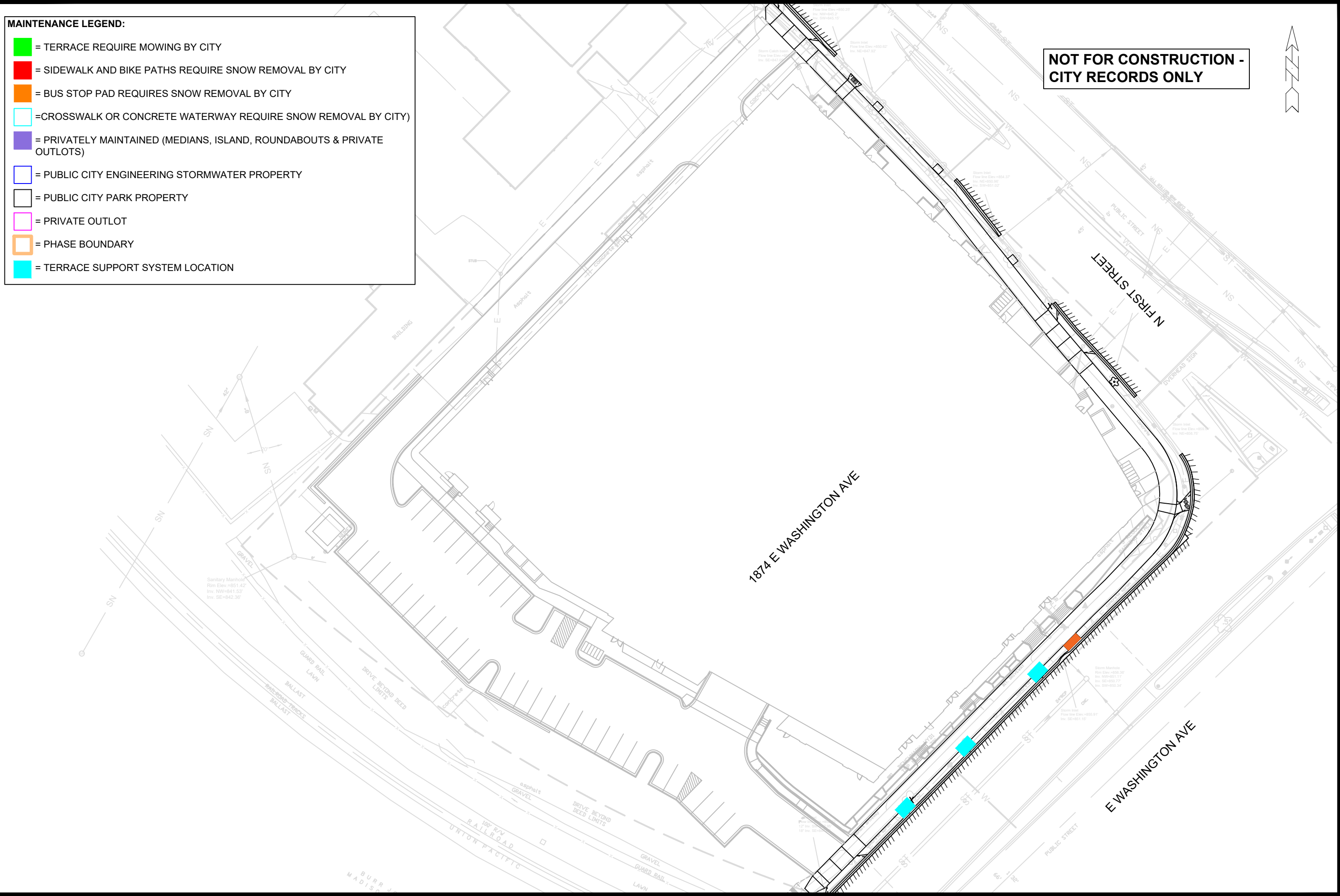
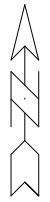


13771  
 X-9

**MAINTENANCE LEGEND:**

- = TERRACE REQUIRE MOWING BY CITY
- = SIDEWALK AND BIKE PATHS REQUIRE SNOW REMOVAL BY CITY
- = BUS STOP PAD REQUIRES SNOW REMOVAL BY CITY
- =CROSSWALK OR CONCRETE WATERWAY REQUIRE SNOW REMOVAL BY CITY)
- = PRIVATELY MAINTAINED (MEDIANS, ISLAND, ROUNDABOUTS & PRIVATE OUTLOTS)
- = PUBLIC CITY ENGINEERING STORMWATER PROPERTY
- = PUBLIC CITY PARK PROPERTY
- = PRIVATE OUTLOT
- = PHASE BOUNDARY
- = TERRACE SUPPORT SYSTEM LOCATION

**NOT FOR CONSTRUCTION -  
CITY RECORDS ONLY**



MARK	REVISION	DATE	BY

13771  
MADISON, WI  
9073

CONTRACT NO:

13771  
1874 E WASHINGTON AVENUE  
M:\DESIGN\Projects\13771\CAD\Streets\13771EN-Maintenance.dwg



13771  
MN-1