

Madison, Wisconsin

CITY OF MADISON

CITY ENGINEERING DIVISION

DEPARTMENT OF PUBLIC WORKS

PLAN OF PROPOSED IMPROVEMENT

INDEX OF SHEETS

SHEET NO.	D1	GENERAL NOTES
SHEET NO.	D2-D3	TYPICAL SECTIONS
SHEET NO.	P1	HIGHLAND AVE MEDIAN DETAIL
SHEET NO.	P2-P5	SIDEWALK PLAN & PROFILES
SHEET NO.	U1	UTILITY PLAN
SHEET NO.	X1-X9	CROSS SECTION
SHEET NO.	MN1	MAINTENANCE PLAN

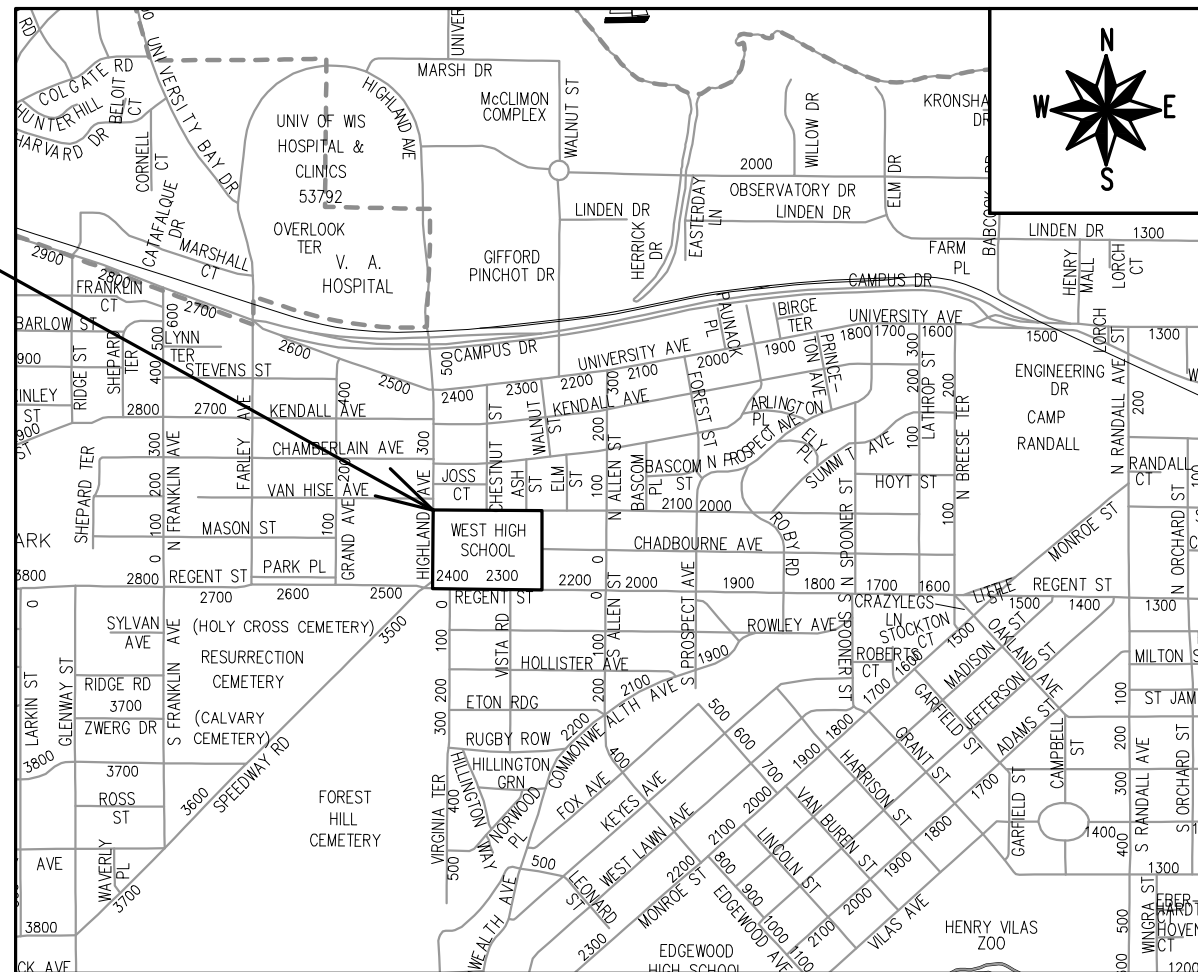
REVISED 7/10/23 BY IO
See sheet P-5

30 ASH STREET-WEST HIGH SCHOOL

CITY PROJECT NO. 13880

CONTRACT NO. 9111

PROJECT
LOCATION



PUBLIC IMPROVEMENT PROJECT
APPROVED

JANUARY 4, 2022

BY THE COMMON COUNCIL
OF MADISON, WISCONSIN

PUBLIC IMPROVEMENT DESIGN
APPROVED BY:

Jun 26, 2023

City Engineer

Date

STREET
DESIGNED BY:



Jun 26, 2023

STORM SEWER
DESIGNED BY:

LATERAL
ONLY

WATER
DESIGNED BY:

LATERAL
ONLY

PLOT SCALE: 1:1_XREF

REV. DATE: 2/28/2023 10:50 AM




ORIGINATOR: CITY_OF_MADISON

ALL PROPOSED STREET TREE REMOVALS WITHIN THE RIGHT OF WAY SHALL BE REVIEWED BY CITY FORESTRY BEFORE THE PLAN COMMISSION MEETING. STREET TREE REMOVALS REQUIRE APPROVAL AND A TREE REMOVAL PERMIT ISSUED BY CITY FORESTRY. ANY STREET TREE REMOVALS REQUESTED AFTER THE DEVELOPMENT PLAN IS APPROVED BY THE PLAN COMMISSION OR THE BOARD OF PUBLIC WORKS AND CITY FORESTRY WILL REQUIRE A MINIMUM OF A 72-HOUR REVIEW PERIOD WHICH SHALL INCLUDE THE NOTIFICATION OF THE ALDERPERSON WITHIN WHO'S DISTRICT IS AFFECTED BY THE STREET TREE REMOVAL(S) PRIOR TO A TREE REMOVAL PERMIT BEING ISSUED.

AS DEFINED BY THE SECTION 107.13 OF CITY OF MADISON STANDARD SPECIFICATIONS FOR PUBLIC WORKS CONSTRUCTION: NO EXCAVATION IS PERMITTED WITHIN 5 FEET OF THE TRUNK OF THE STREET TREE OR WHEN CUTTING ROOTS OVER 3 INCHES IN DIAMETER. IF EXCAVATION IS NECESSARY, THE CONTRACTOR SHALL CONTACT MADISON CITY FORESTRY (266-4816) PRIOR TO EXCAVATION. CITY OF MADISON FORESTRY PERSONNEL SHALL ASSESS THE IMPACT TO THE TREE AND TO ITS ROOT SYSTEM PRIOR TO WORK COMMENCING. TREE PROTECTION SPECIFICATIONS CAN BE FOUND ON THE FOLLOWING WEBSITE: [HTTPS://WWW.CITYOFMADISON.COM/BUSINESS/PW/SPECS.CFM](https://www.cityofmadison.com/business/pw/specs.cfm)

DEVELOPER MUST SUBMIT A TRAFFIC CONTROL PLAN TO CITY TRAFFIC ENGINEERING AT LEAST 14 DAYS PRIOR TO THE START OF WORK. WORK SHALL NOT PROCEED UNTIL AN APPROVED TRAFFIC CONTROL PLAN IS IN PLACE.

CONTACT PROJECT ENGINEER AND STREET DESIGNER IKE OKAFOR AT IOKAFOR@CITYOFMADISON.COM FOR CAD AND ALIGNMENT DATA PRIOR TO STAKING.

CONVENTIONAL SIGNS	
FIELD VERIFY ALL UTILITY LOCATIONS	
GAS	—— G ——
STORM SEWER	—— ST ——
SANITARY SEWER	—— SN ——
WATER	—— W ——
BURIED ELECTRIC	—— E ——
OVERHEAD ELECTRIC	—— OH ——
POWER POLE	
ADA COMPLIANT RAMP W/ DETECTABLE WARNING FIELD	
COMBUSTIBLE FLUIDS	

UNDERDRAINS SHALL BE INSTALLED PER STANDARD DETAIL DRAWING 4.05 FOR 75' ON EACH SIDE OF THE LOW POINT, OR TO THE NEAREST CURB HIGH POINT. ALL UNDERDRAIN SHALL BE WRAPPED.

ALL GUTTERS SHALL DRAIN WITH A MINIMUM GRADE OF 0.5% TOWARD STORM SEWER INLETS.

ALL DITCHES SHALL DRAIN WITH A MINIMUM GRADE OF 0.5%

THE CROSS SLOPE OF SIDEWALKS AND BARRIER FREE SIDEWALK CURB RAMPS SHALL TYPICALLY BE 1.5%. THE LONGITUDINAL GRADE OF BARRIER FREE SIDEWALK CURB RAMPS SHALL NOT EXCEED 8.33%. ALL SIDEWALK RAMPS SHALL BE CONSTRUCTED ACCORDING TO S.D.D. 3.04. AT ALL OTHER LOCATIONS THE LONGITUDINAL GRADE OF SIDEWALKS SHALL NOT BE LESS THAN 0.5% AND SHALL DRAIN TOWARD STORM SEWER INLETS. ALL SIDEWALK AND SIDEWALK RAMP ELEVATIONS AND GRADES SHALL BE FIELD VERIFIED AND SET TO COMPLY WITH THE CITY OF MADISON STANDARD SPECIFICATIONS AND THE A.D.A. GUIDELINES.

CURB STATION AND OFFSETS SHALL BE TO THE **EDGE OF PAVEMENT** UNLESS OTHERWISE INDICATED. CURB ELEVATIONS SHALL BE TO THE **EDGE OF PAVEMENT** UNLESS OTHERWISE INDICATED.

POWER POLES AND OTHER OBSTRUCTIONS SHALL BE MOVED TO PROVIDE 2 FEET MINIMUM OF CLEAR DISTANCE FROM ANY FACE OF CURB OR EDGE OF SIDEWALK.

ANY INFORMATION SHOWN ON THIS PLAN, WHICH IS NOT PART OF THIS RIGHT-OF-WAY PROJECT, IS PRELIMINARY AND NOT FOR CONSTRUCTION.

THERE MAY BE EXISTING UTILITIES OR OTHER FEATURES WHICH ARE EITHER NOT SHOWN OR SHOWN INCORRECTLY ON THIS PLAN. IT IS THE RESPONSIBILITY OF THE DEVELOPER TO LOCATE AND IDENTIFY ALL UTILITIES AND TOPOGRAPHY WHICH MAY AFFECT THE CONSTRUCTION OF THESE IMPROVEMENTS.

ALL PERMANENT SIGNING AND POSTING WILL BE DETERMINED AND PROVIDED BY THE TRAFFIC ENGINEERING DIVISION, FOLLOWING CONSTRUCTION OF THESE IMPROVEMENTS.

THE DEVELOPER SHALL PROVIDE, INSTALL AND MAINTAIN ALL STREET END BARRICADES, SIGNING AND TRAFFIC CONTROL, AS REQUIRED BY THE CITY TRAFFIC ENGINEER.

PAVEMENT SAWCUTS SHALL BE AS DIRECTED BY THE CITY CONSTRUCTION ENGINEER. SAWCUTS SHOWN ON THE PLAN ARE APPROXIMATE.

ALL WORK IN THE RIGHT OF WAY AND PUBLIC EASEMENTS SHALL BE IN ACCORDANCE WITH THE CITY OF MADISON STANDARD SPECIFICATIONS FOR PUBLIC WORKS CONSTRUCTION

ALL UTILITY VERIFICATIONS AND ACCURACY OF THE DRAWINGS ARE THE RESPONSIBILITY OF THE DEVELOPER. ANY CONFLICTS THAT ARISE FROM MISSING OR ERRONEOUS INFORMATION WILL BE AT THE EXPENSE OF THE DEVELOPER. NO PRECAST WILL BE APPROVED FOR STORM SEWER OR SANITARY SEWER UNTIL ALL POTENTIAL UTILITY CONFLICTS ARE RESOLVED.

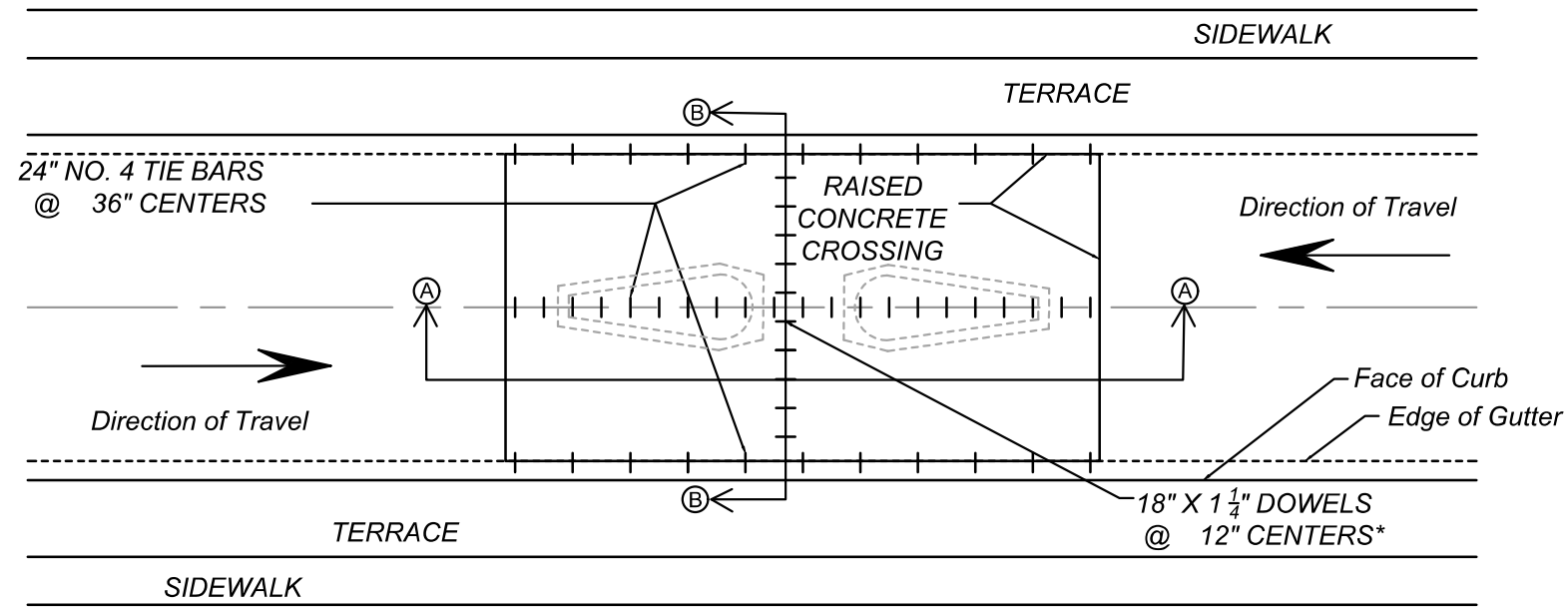
MARK	REVISION	DATE	BY
13880		2/28/2023 12:32 PM	
Designed By: LMC	Scale: #####		D-1

13880
MADISON, WI
9111
CONTRACT NO:

GENERAL NOTES
30 ASH STREET - WEST HIGH SCHOOL
M:\DESIGN\Projects\13880\CAD\Streets\13880EN-Details.dwg



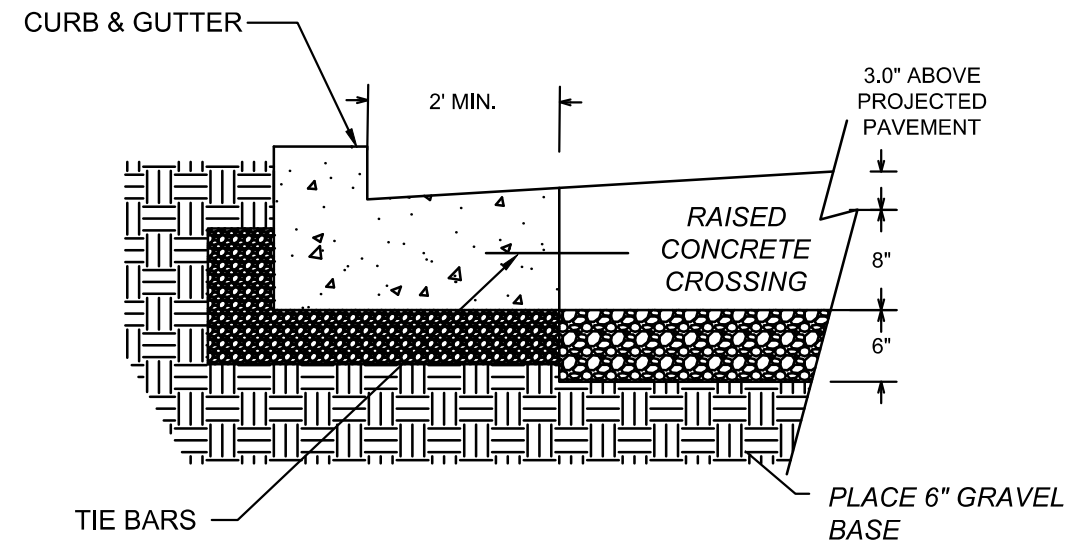
13880
D-1



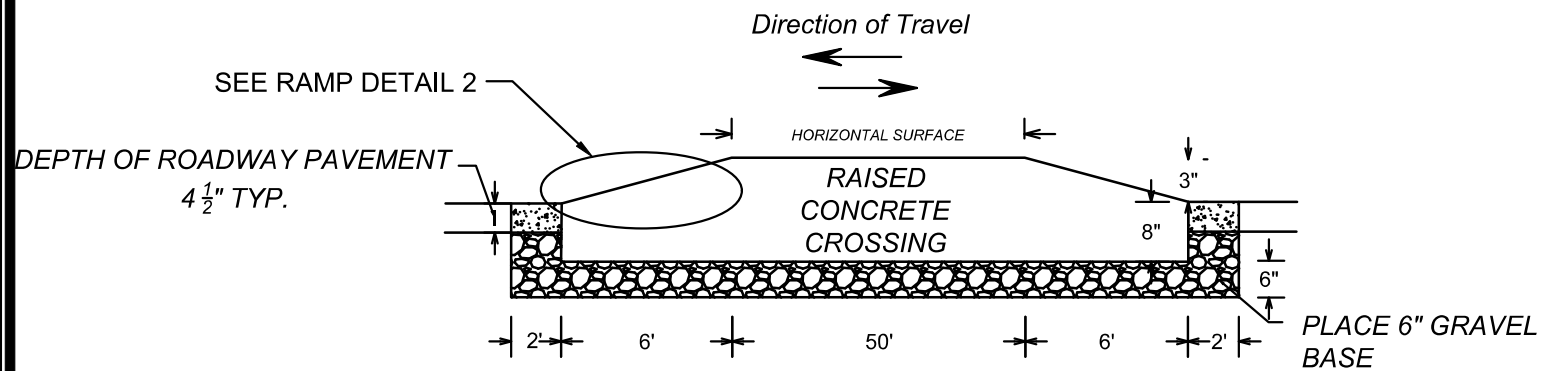
PLAN VIEW

EX. RAISED CONCRETE PEDESTRIAN CROSSING
HIGHLAND AVENUE
(NOT TO SCALE)

*NOTE: JOINT SPACING AND REINFORCING SHALL COMPLY WITH S.D.D. 3.11.

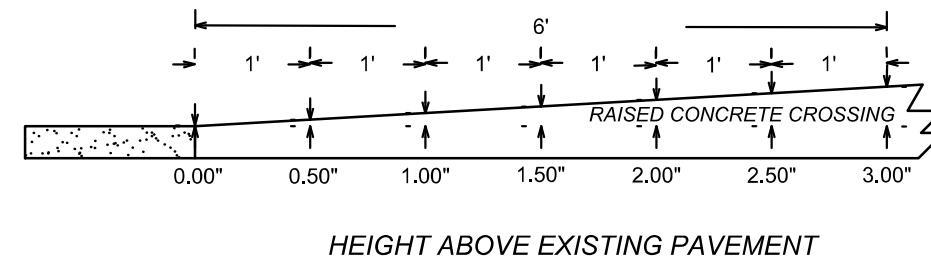


DETAIL 1
GUTTER EDGE
(NOT TO SCALE)

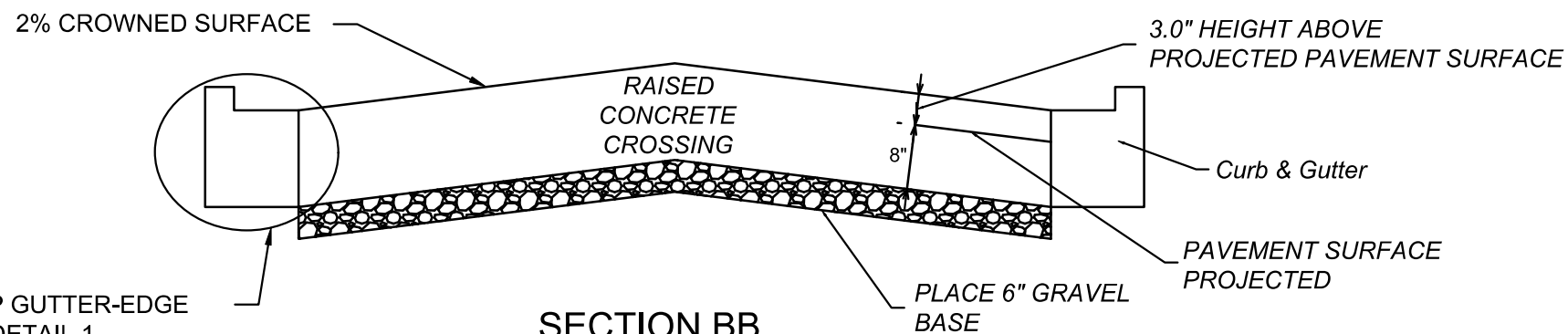


SECTION AA

NOT TO SCALE
(VERTICAL SCALE IS EXAGGERATED)



DETAIL 2
RAMP
(NOT TO SCALE)



SECTION BB

NOT TO SCALE
(VERTICAL SCALE IS EXAGGERATED)

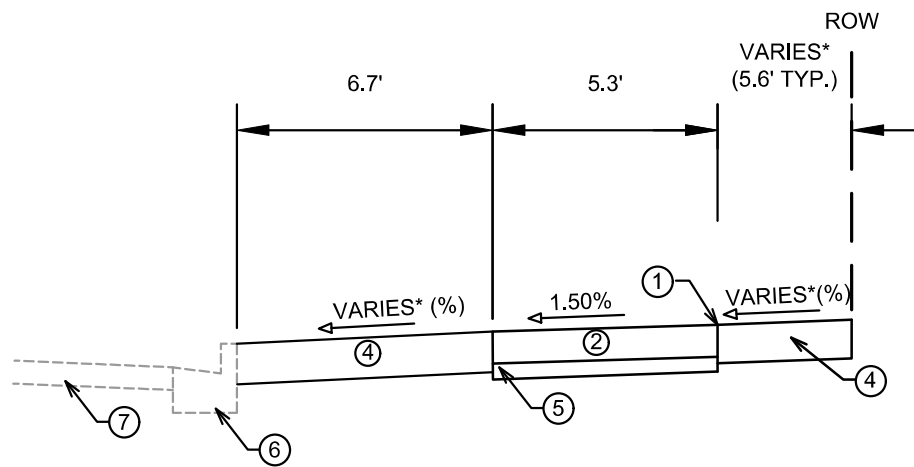
DATE	BY
REVISION	
MARK	
Designed By: LMC	Date: 2/28/2023 12:32 PM
Scale: 1:5	
13880	D-2

13880
MADISON, WI
9111
CONTRACT NO:

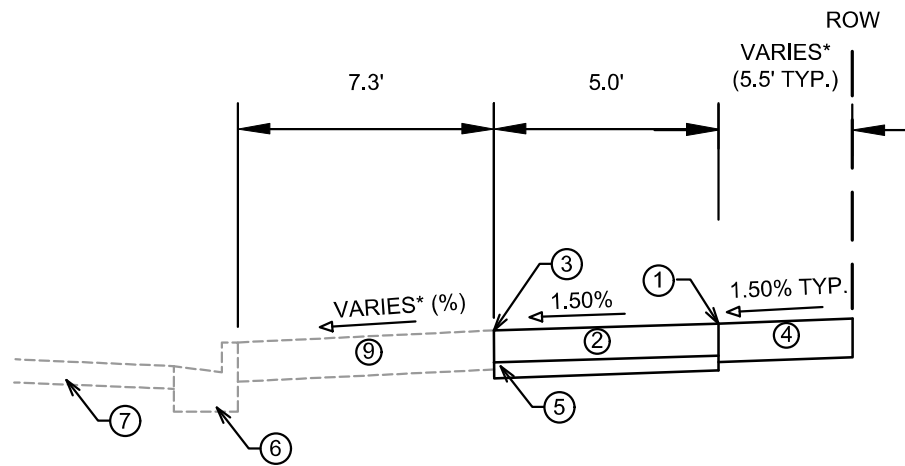
TYPICAL SECTIONS
30 ASH STREET - WEST HIGH SCHOOL
M:\DESIGN\Projects\13880\CAD\Streets\13880EN-Details.dwg



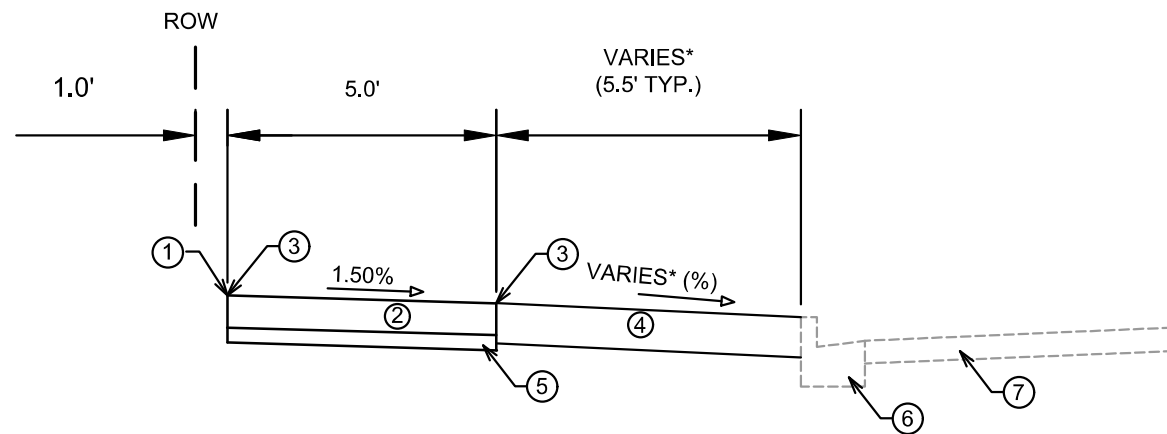
13880
D-2



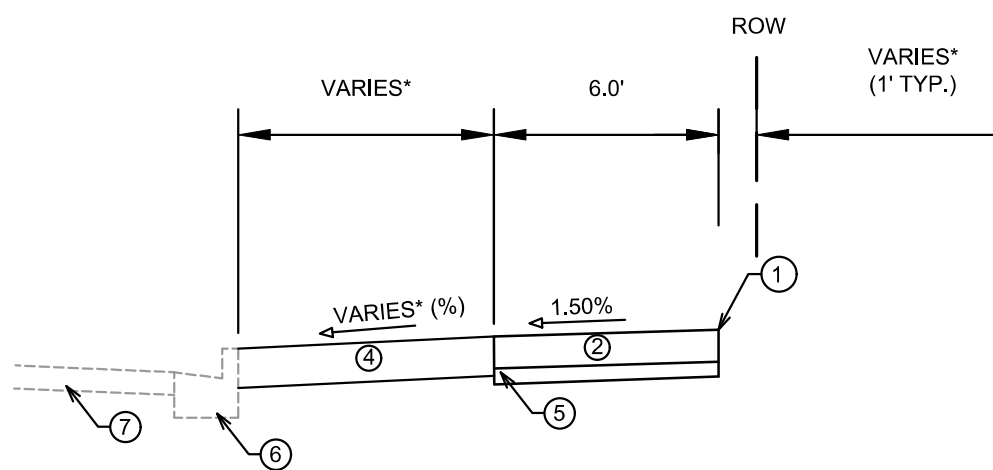
TYPICAL SECTION
VAN HISE AVENUE
STA 10+00 TO STA 12+58
(NOT TO SCALE)



TYPICAL SECTION
VAN HISE AVENUE
STA 7+36 TO STA 9+63
(NOT TO SCALE)



TYPICAL SECTION
REGENT STREET
STA 30+73 TO STA 33+93
(NOT TO SCALE)




TYPICAL SECTION
HIGHLAND AVENUE
STA 40+75 TO STA 42+16
(NOT TO SCALE)

- ① POINT REFERRED TO ON PROFILE.
- ② 5" CONCRETE SIDEWALK
- ③ PLACE JOINT FILLER & JOINT SEALER.
- ④ 6" TOPSOIL, SEED & MAT OR 5" CONCRETE AS SPECIFIED ON P-SHEETS.
- ⑤ 3" SELECT FILL SIDEWALK BASE.
- ⑥ EX. TYPE 'A' CONCRETE CURB & GUTTER TO REMAIN
- ⑦ EX. PAVEMENT TO REMAIN.
- ⑧ PROPOSED RETAINING WALL. SEE APPROVED SITE PLAN FOR DETAILS.
- ⑨ EX. 5" CONCRETE TERRACE, REMOVE & REPLACE AS SPECIFIED ON P SHEET.

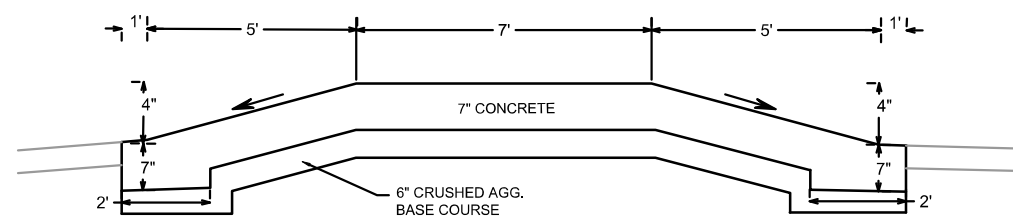
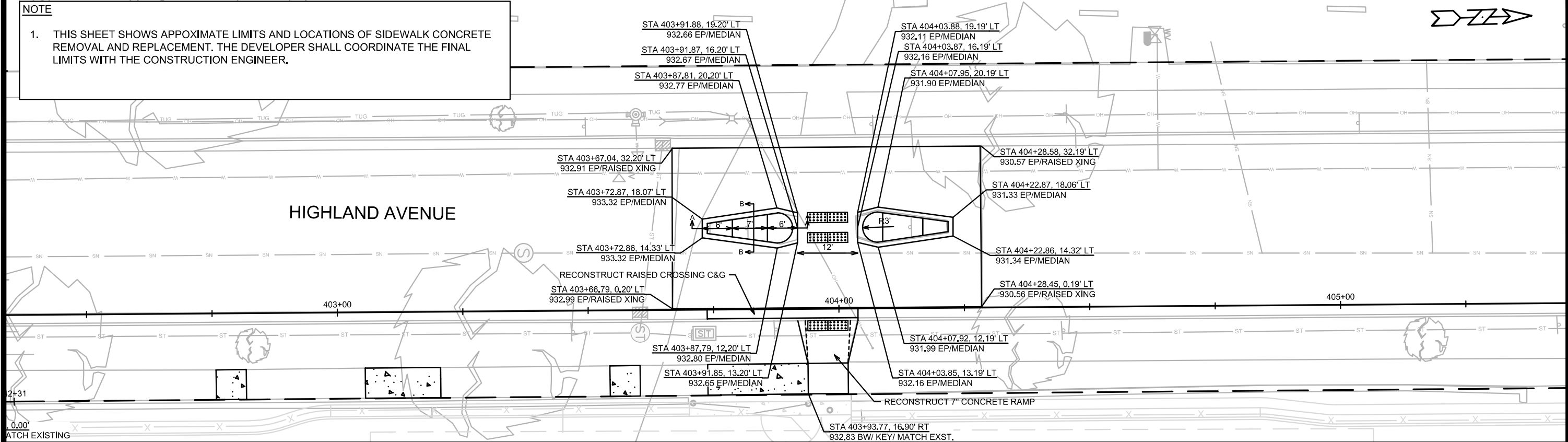
SPECIAL NOTES

* SEE P-SHEETS FOR SLOPES AND DIMENSIONS.

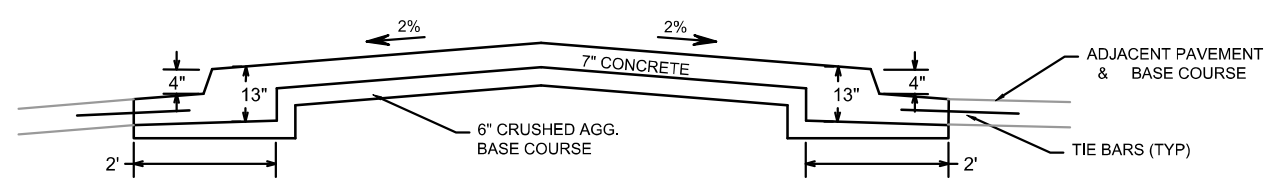
13880	MADISON, WI	9111
30 ASH STREET - WEST HIGH SCHOOL		
M:\DESIGN\Projects\13880\CAD\Streets\13880EN-Details.dwg		
13880	D-3	

LEGEND
 - REMOVE & REPLACE 5" CONCRETE SIDEWALK OR TERRACE.

NOTE
 1. THIS SHEET SHOWS APPROXIMATE LIMITS AND LOCATIONS OF SIDEWALK CONCRETE REMOVAL AND REPLACEMENT. THE DEVELOPER SHALL COORDINATE THE FINAL LIMITS WITH THE CONSTRUCTION ENGINEER.



**CONCRETE TRAFFIC ISLAND DETAIL
 SECTION A-A
 (NOT TO SCALE)**



**CONCRETE TRAFFIC ISLAND DETAIL
 SECTION B-B
 (NOT TO SCALE)**

NOTE: CONCRETE TRAFFIC ISLANDS SHALL BE TIED TO ADJACENT CONCRETE PAVEMENT WITH 24" NO. 4 TIE BARS @ 36" CENTERS.

DATE	BY
REVISION	
MARK	
Designed By: LMC	Date: 4/24/2023 1:05 PM
13880	P-1

13880
 MADISON, WI
 CONTRACT NO: 9111

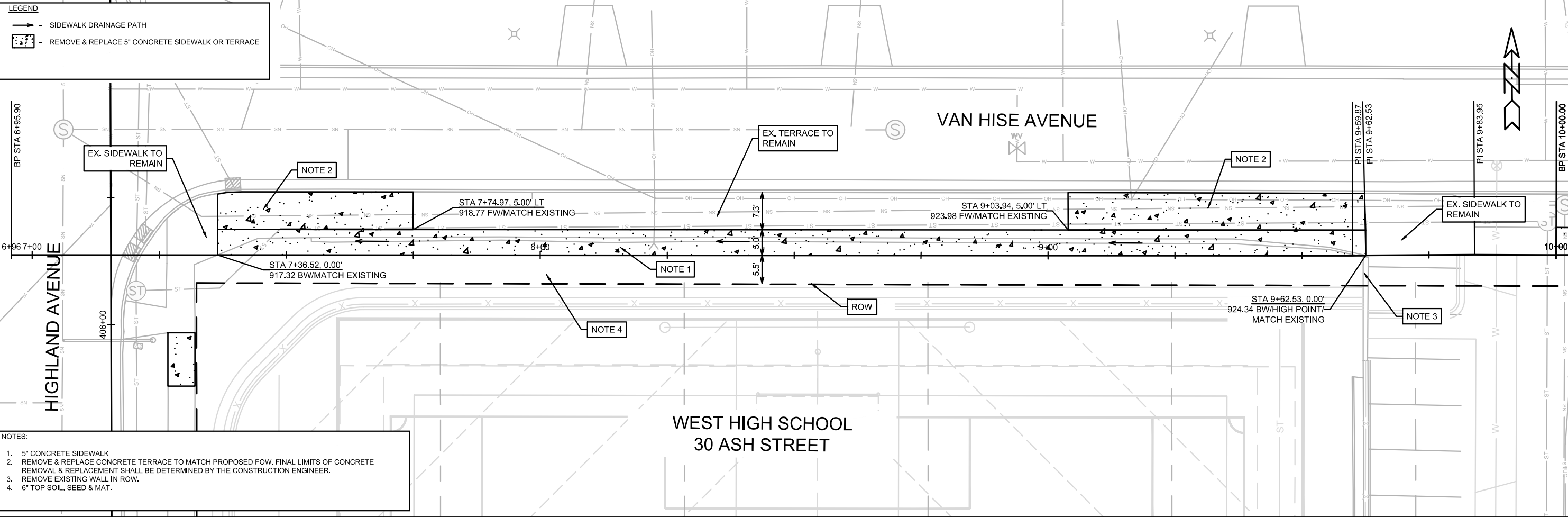
HIGHLAND AVENUE MEDIAN DETAIL
 30 ASH STREET - WEST HIGH SCHOOL
 M:\DESIGN\Projects\13880\CAD\Streets\13880EN-P-IP.dwg



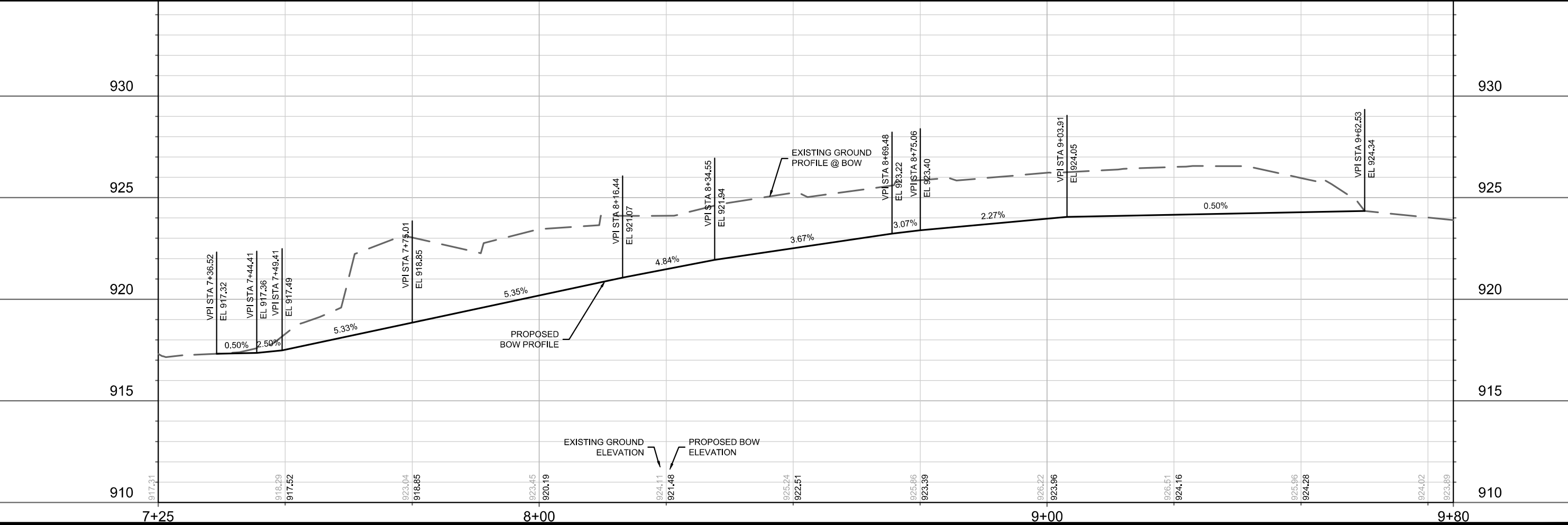
LEGEND

→ - SIDEWALK DRAINAGE PATH

- REMOVE & REPLACE 5" CONCRETE SIDEWALK OR TERRACE



- NOTES:**
- 5" CONCRETE SIDEWALK
 - REMOVE & REPLACE CONCRETE TERRACE TO MATCH PROPOSED FOW. FINAL LIMITS OF CONCRETE REMOVAL & REPLACEMENT SHALL BE DETERMINED BY THE CONSTRUCTION ENGINEER.
 - REMOVE EXISTING WALL IN ROW.
 - 6" TOP SOIL, SEED & MAT.



CITY OF MADISON WISCONSIN

13880

P-2

CONTRACT NO: 9111

13880

MADISON, WI

13880

SIDEWALK PLAN & PROFILE - VAN HISE AVENUE

30 ASH STREET - WEST HIGH SCHOOL

M:\DESIGN\Projects\13880\CAD\Streets\13880EN-PnP.dwg

Scale: 1" = 20'

Date: 5/22/2023 9:22 AM

Designed By: IO

MARK

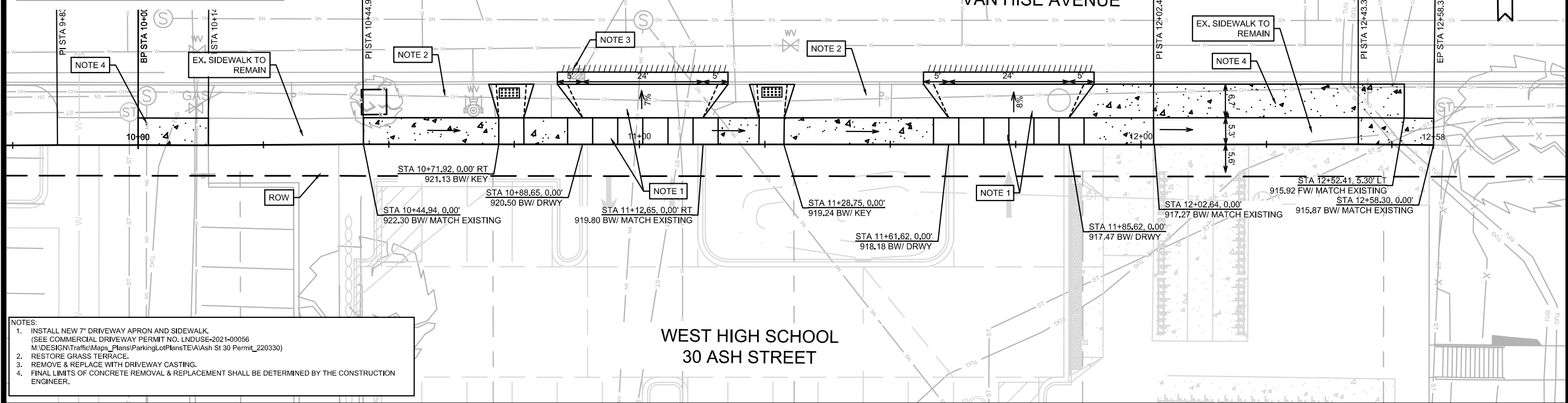
REVISION

DATE

BY

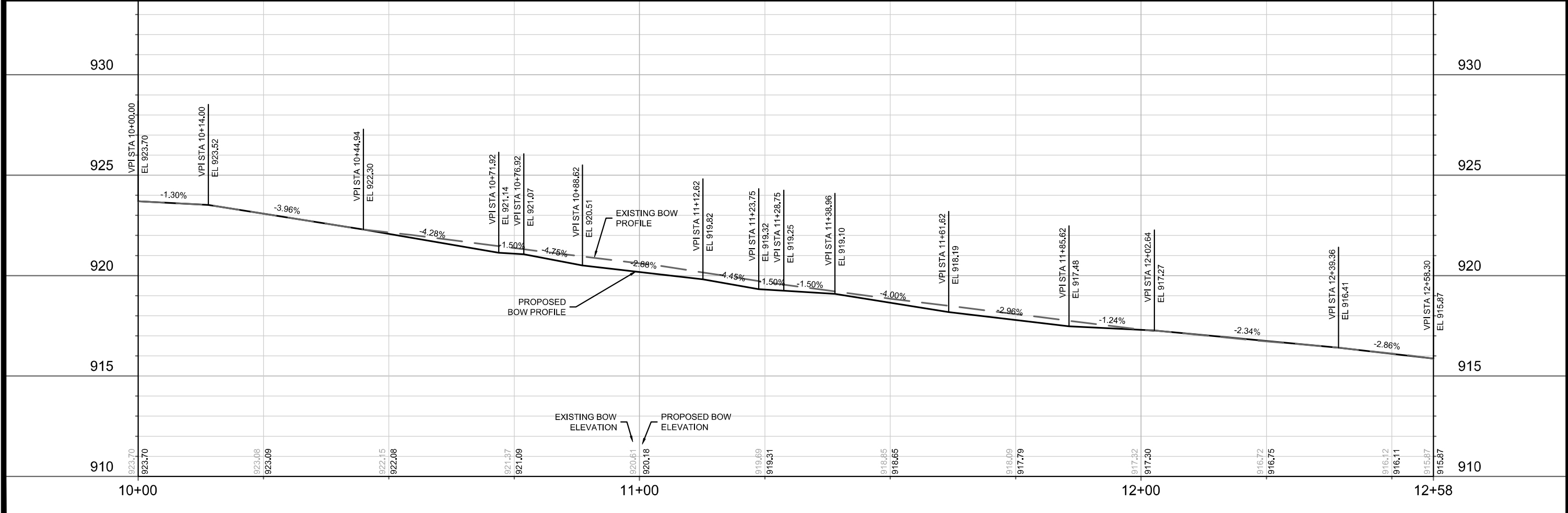
LEGEND

- X - CLEAR AND GRUB
- - SIDEWALK DRAINAGE PATH
- [Pattern] - NEW 5" CONCRETE SIDEWALK OR TERRACE
- [Box] - TREE PROTECTION FENCING
- /// - SAWCUT



NOTES:

1. INSTALL NEW 7" DRIVEWAY APRON AND SIDEWALK. (SEE COMMERCIAL DRIVEWAY PERMIT NO. LNDUSE-2021-00056 M:\DESIGN\Traffic\Maps_Plans\ParkingLotPlans\TEVA\Ash St 30 Permit_220330)
2. RESTORE GRASS TERRACE.
3. REMOVE & REPLACE WITH DRIVEWAY CASTING.
4. FINAL LIMITS OF CONCRETE REMOVAL & REPLACEMENT SHALL BE DETERMINED BY THE CONSTRUCTION ENGINEER.



MARK	REVISION	DATE	BY

13880
MADISON, WI
9111
CONTRACT NO:

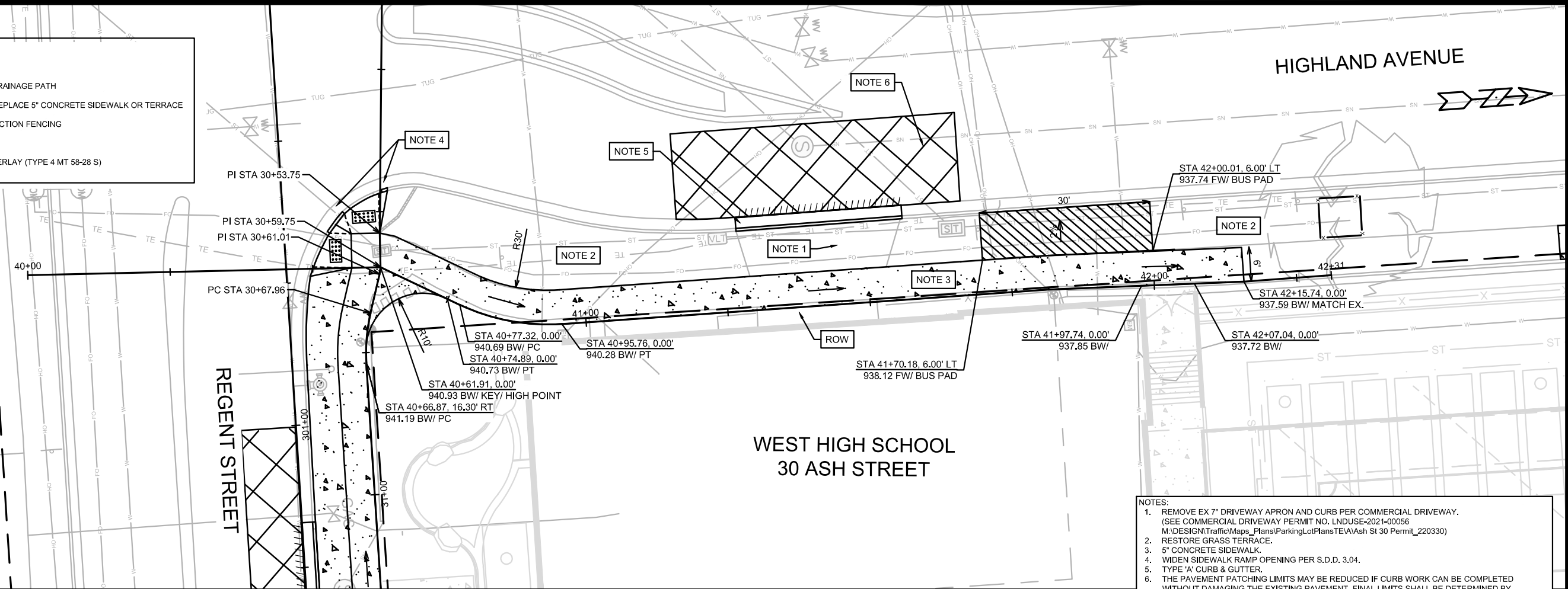
SIDEWALK PLAN & PROFILE - VAN HISE AVENUE
30 ASH STREET - WEST HIGH SCHOOL
M:\DESIGN\Projects\13880\CAD\Streets\13880EN-P\IP.dwg

13880
P-3

OWNER: 2405 REGENT STREET LLC
2405 REGENT STREET

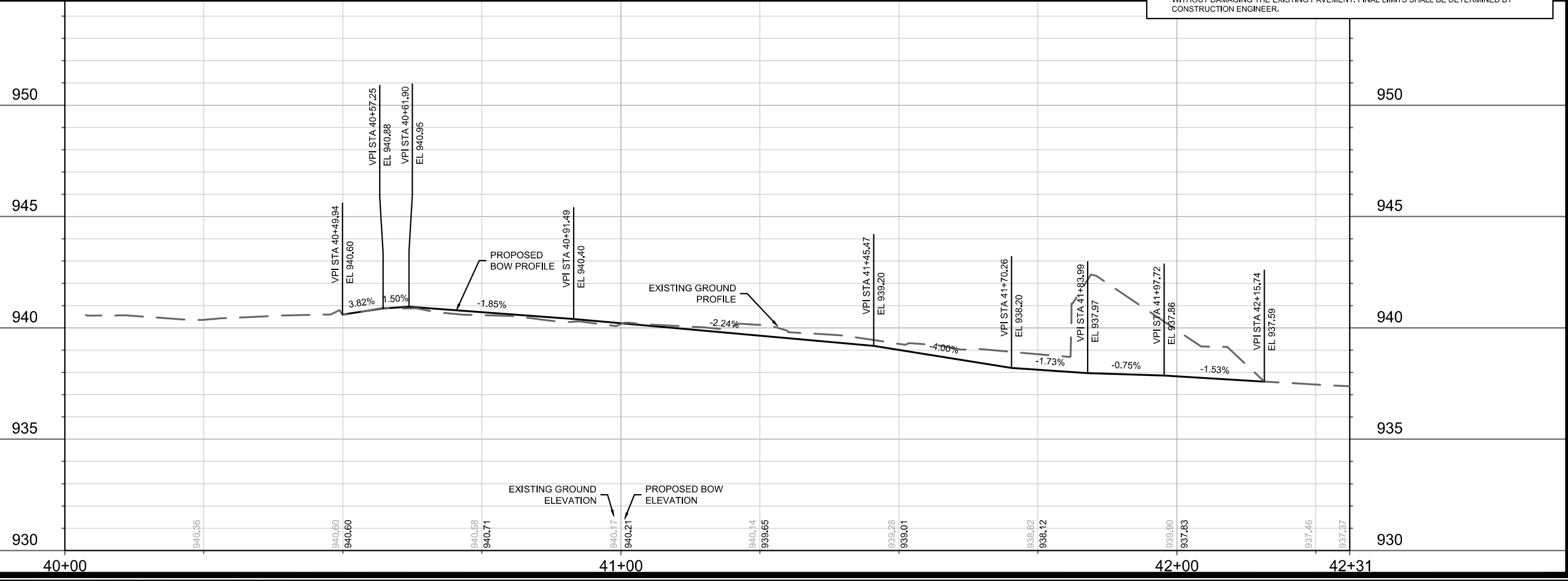
LEGEND

- 5" BUS PAD
- SIDEWALK DRAINAGE PATH
- REMOVE & REPLACE 5" CONCRETE SIDEWALK OR TERRACE
- TREE PROTECTION FENCING
- SAWCUT
- 2" MILL & OVERLAY (TYPE 4 MT 58-28 S)



NOTES:

1. REMOVE EX 7" DRIVEWAY APRON AND CURB PER COMMERCIAL DRIVEWAY. (SEE COMMERCIAL DRIVEWAY PERMIT NO. LNDUSE-2021-00056 M:\DESIGN\Traffic\Maps_Plans\ParkingLotPlans\TEVA\Ash St 30 Permit_220330)
2. RESTORE GRASS TERRACE.
3. 5" CONCRETE SIDEWALK.
4. WIDEN SIDEWALK RAMP OPENING PER S.D.D. 3.04.
5. TYPE 'A' CURB & GUTTER.
6. THE PAVEMENT PATCHING LIMITS MAY BE REDUCED IF CURB WORK CAN BE COMPLETED WITHOUT DAMAGING THE EXISTING PAVEMENT. FINAL LIMITS SHALL BE DETERMINED BY CONSTRUCTION ENGINEER.

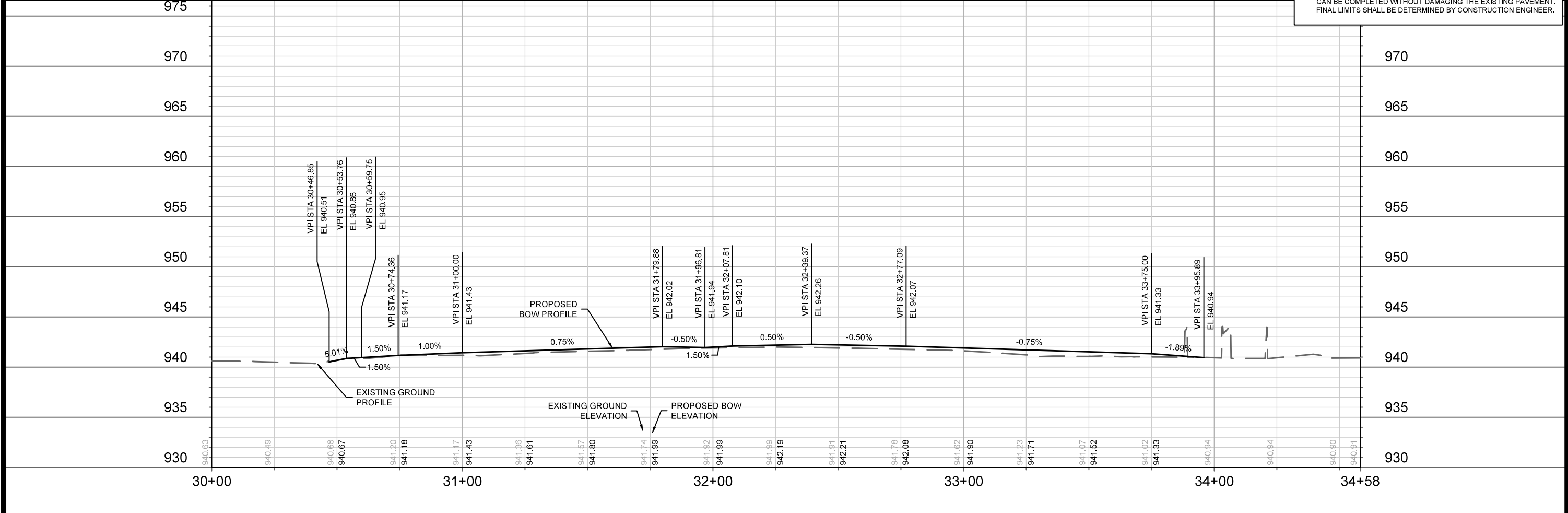
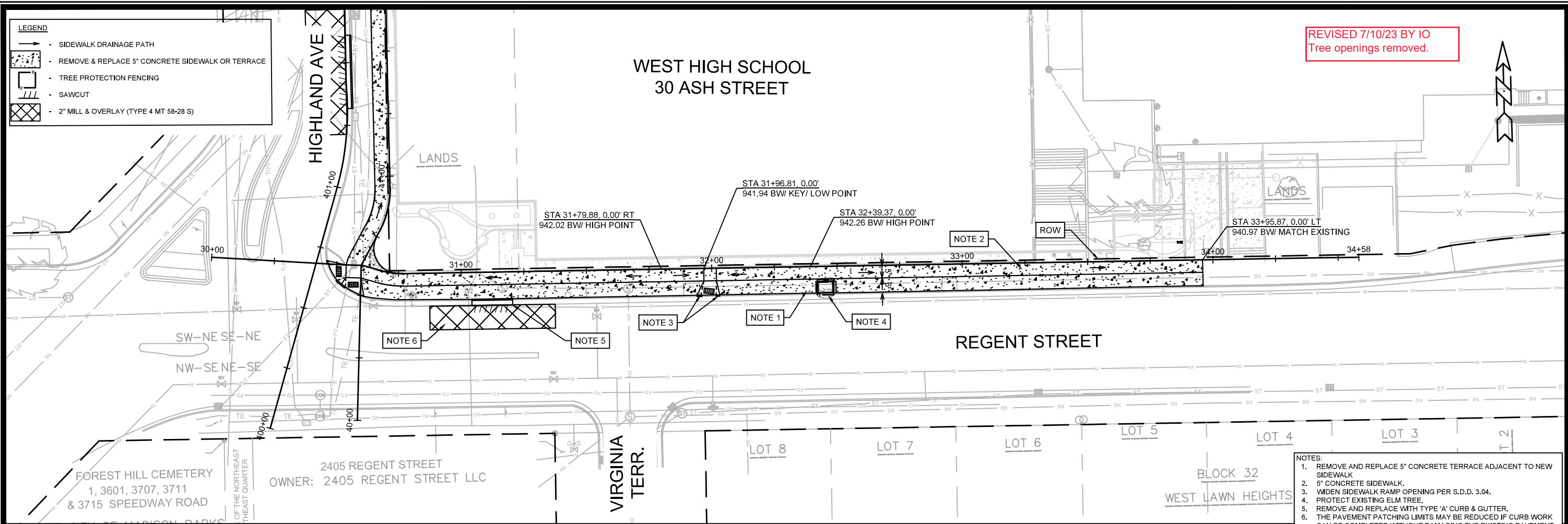


13880	MADISON, WI	9111	CONTRACT NO:
SIDEWALK PLAN & PROFILE - HIGHLAND AVENUE 30 ASH STREET - WEST HIGH SCHOOL			
<small>M:\DESIGN\Projects\13880\CAD\Streets\13880EN-PnP.dwg</small>			
13880		P-4	

LEGEND

- SIDEWALK DRAINAGE PATH
- REMOVE & REPLACE 5" CONCRETE SIDEWALK OR TERRACE
- TREE PROTECTION FENCING
- SAWCUT
- 2" MILL & OVERLAY (TYPE 4 MT 58-28 S)

REVISED 7/10/23 BY IO
Tree openings removed.



- NOTES:**
1. REMOVE AND REPLACE 5" CONCRETE TERRACE ADJACENT TO NEW SIDEWALK.
 2. 5" CONCRETE SIDEWALK.
 3. WIDEN SIDEWALK RAMP OPENING PER S.D.D. 3.04.
 4. PROTECT EXISTING ELM TREE.
 5. REMOVE AND REPLACE WITH TYPE 'A' CURB & GUTTER.
 6. THE PAVEMENT PATCHING LIMITS MAY BE REDUCED IF CURB WORK CAN BE COMPLETED WITHOUT DAMAGING THE EXISTING PAVEMENT. FINAL LIMITS SHALL BE DETERMINED BY CONSTRUCTION ENGINEER.

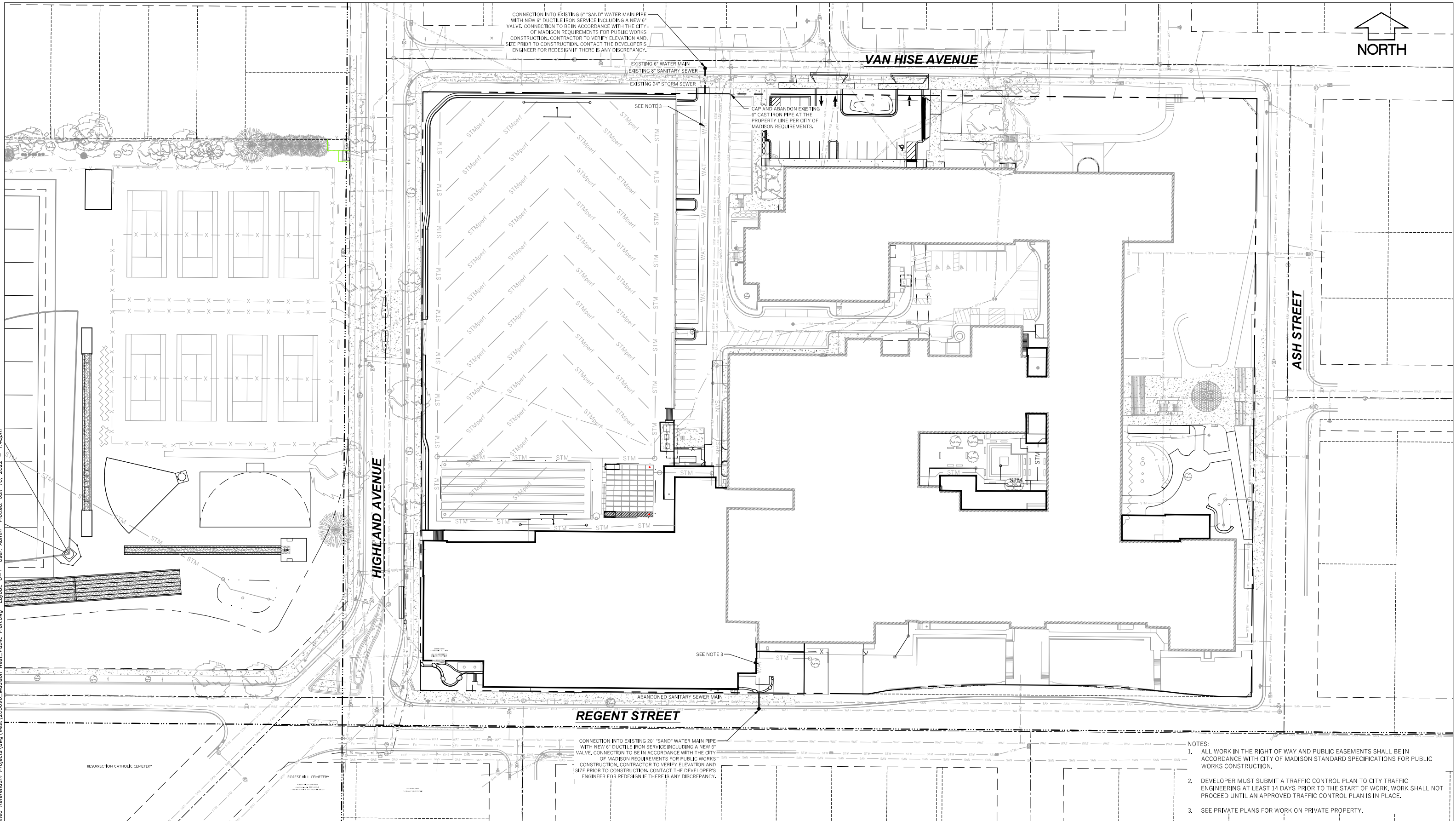
DATE	BY
REVISION	
MARK	
Designed By: IO	Date: 7/10/2023 9:31 AM
13880	

13880
MADISON, WI
CONTRACT NO: 9111

SIDEWALK PLAN & PROFILE - REGENT STREET
30 ASH STREET - WEST HIGH SCHOOL
M:\DESIGN\Projects\13880\CAD\Streets\13880EN-PrP.dwg

13880
P-5

File: W:\2020\200696_MKSD - Planned Referendum Projects\Wg\West\200696_Madison_West_Public_Plans.dwg Layout: U-1 User: Admin PlotDate: Jun 10, 2022 1:48pm



REGENT STREET

VAN HISE AVENUE

ASH STREET

HIGHLAND AVENUE

30 ASH STREET
MADISON WEST HIGH SCHOOL IMPROVEMENTS
CITY OF MADISON, DANE COUNTY, WI

Sheet Title:
UTILITY PLAN
30 ASH STREET
CITY OF MADISON PROJECT NO.

30 ASH STREET
MADISON, WI 53726

DIGGERS HOTLINE
Toll Free (800) 242-8511 or 811
Hearing Impaired TDD (800) 542-2289
www.DiggersHotline.com

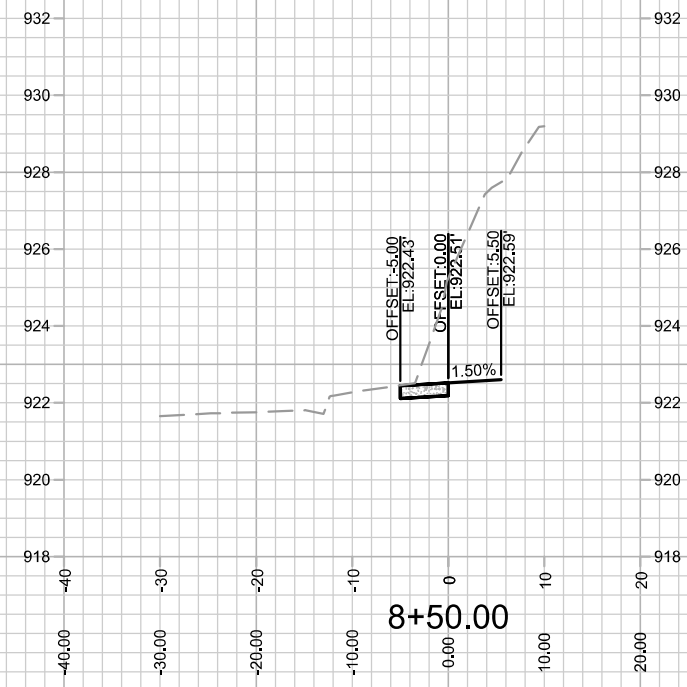
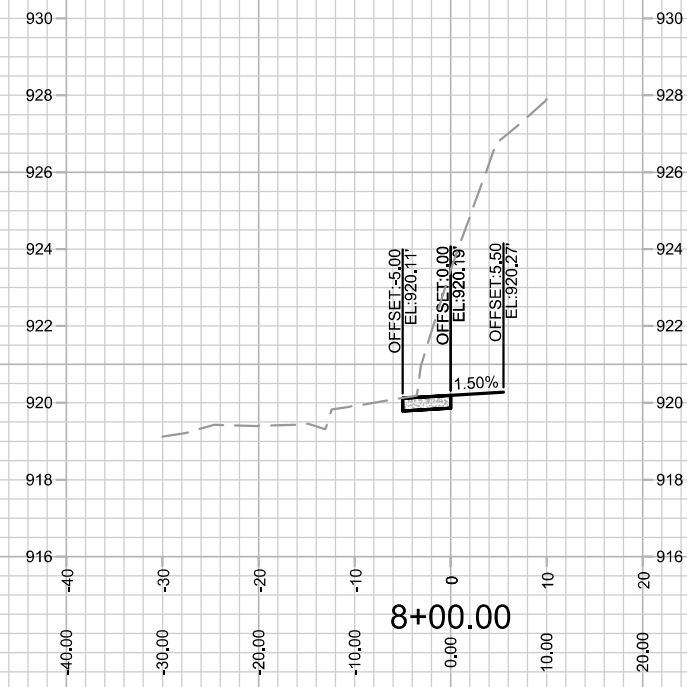
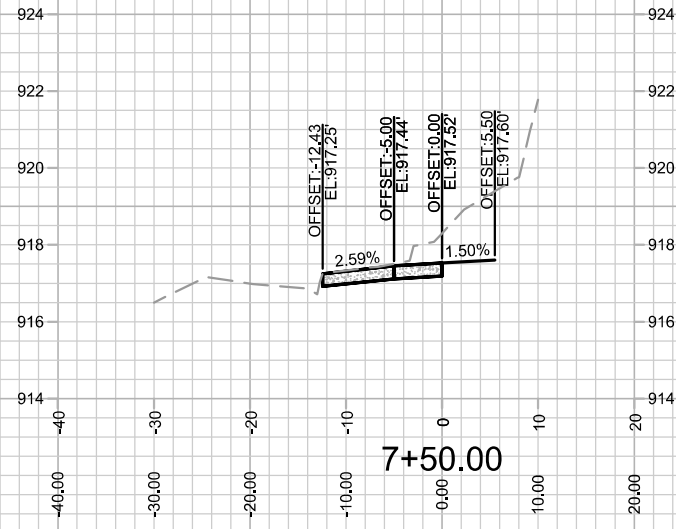
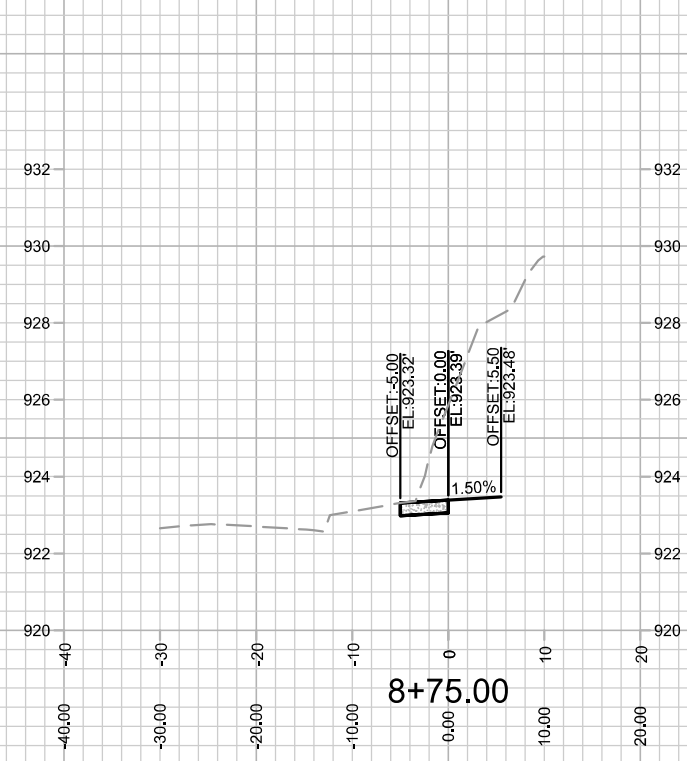
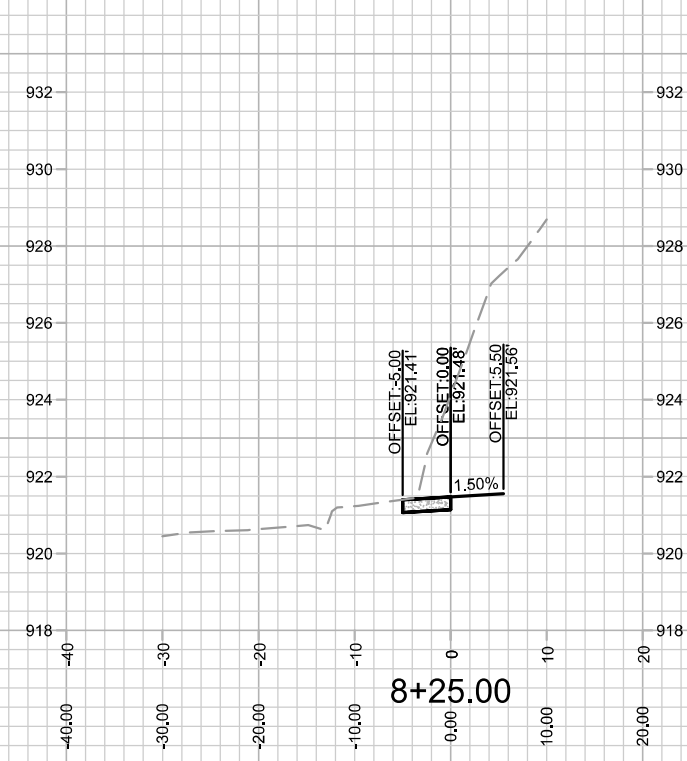
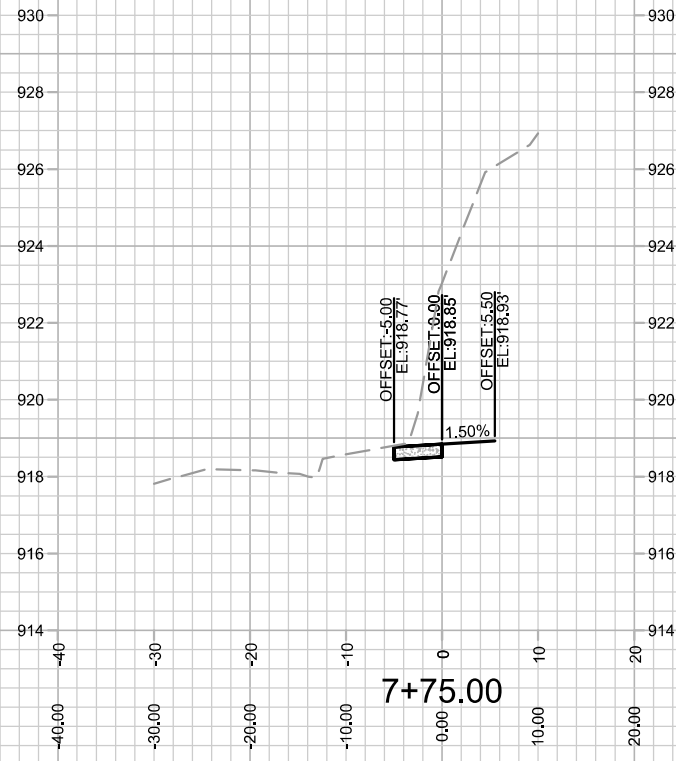
Graphic Scale
0' 10' 20' 40' 60'
1" = 80'

Revisions:	No.	Date:	Description:

- NOTES:
1. ALL WORK IN THE RIGHT OF WAY AND PUBLIC EASEMENTS SHALL BE IN ACCORDANCE WITH CITY OF MADISON STANDARD SPECIFICATIONS FOR PUBLIC WORKS CONSTRUCTION.
 2. DEVELOPER MUST SUBMIT A TRAFFIC CONTROL PLAN TO CITY TRAFFIC ENGINEERING AT LEAST 14 DAYS PRIOR TO THE START OF WORK. WORK SHALL NOT PROCEED UNTIL AN APPROVED TRAFFIC CONTROL PLAN IS IN PLACE.
 3. SEE PRIVATE PLANS FOR WORK ON PRIVATE PROPERTY.

Wyser Number	20-0696
Set Type	CONSTRUCTION DOCUMENTS
Date Issued	06/10/2022
Sheet Number	U-1





MARK	REVISION	DATE	BY

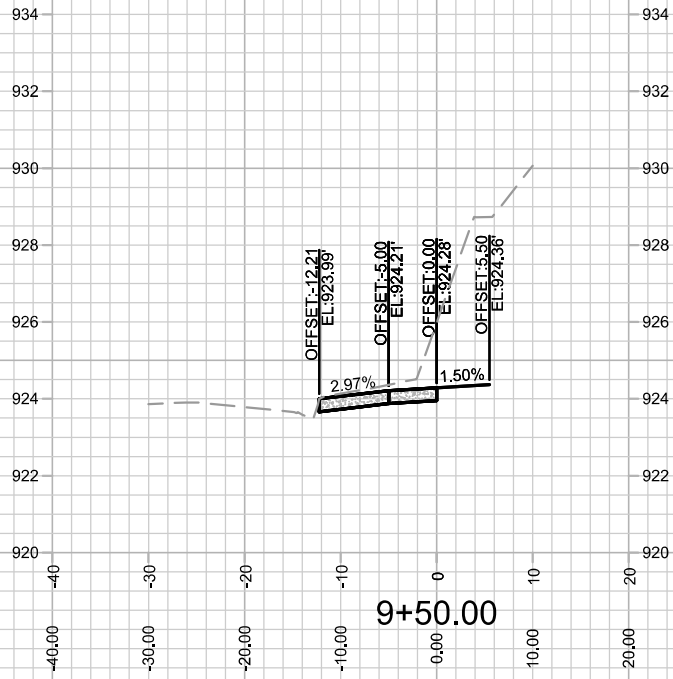
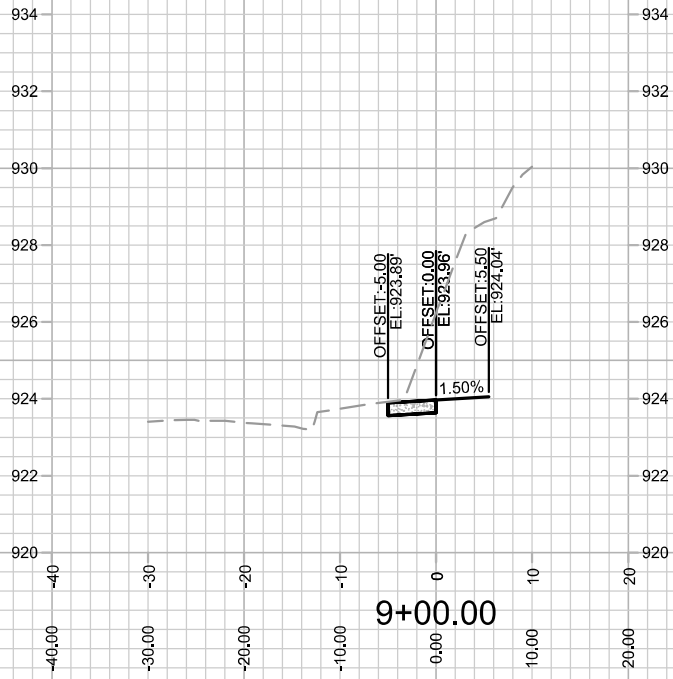
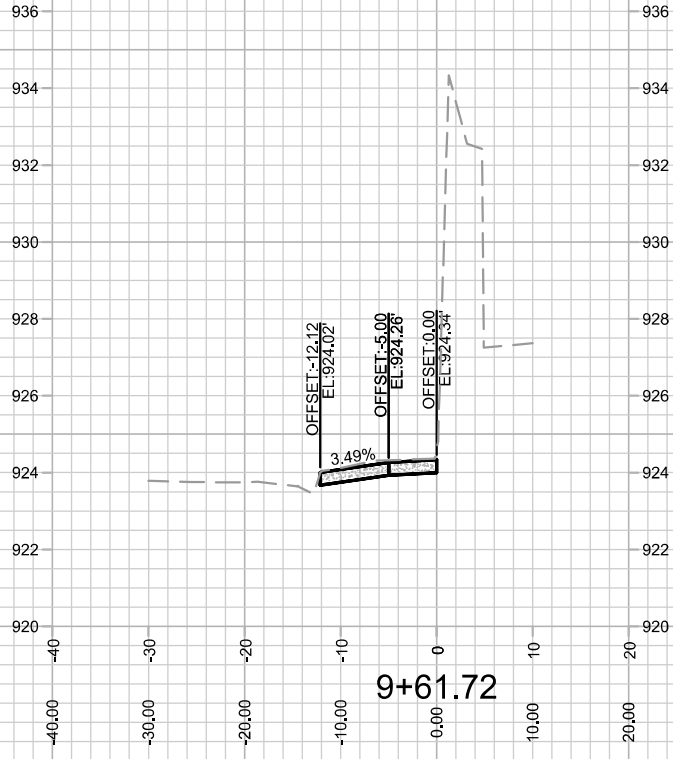
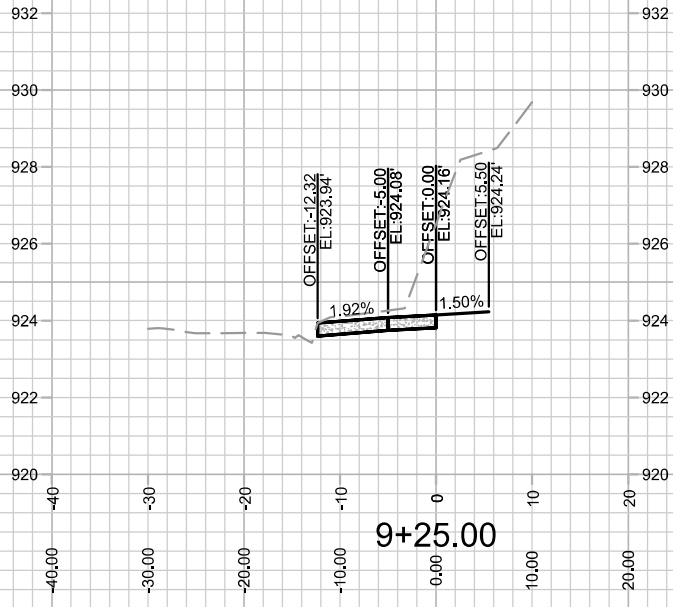
13880
 MADISON, WI
 CONTRACT NO: 9111

CROSS SECTION - VAN HISE AVENUE
 30 ASH STREET - WEST HIGH SCHOOL
 M:\DESIGN\Projects\13880\CAD\Streets\13880EN-Corridor.dwg



13880
 X-1

Designed By: IO
 Date: 5/2/2023 9:12 AM
 Scale: 1" = 20'
 X-1

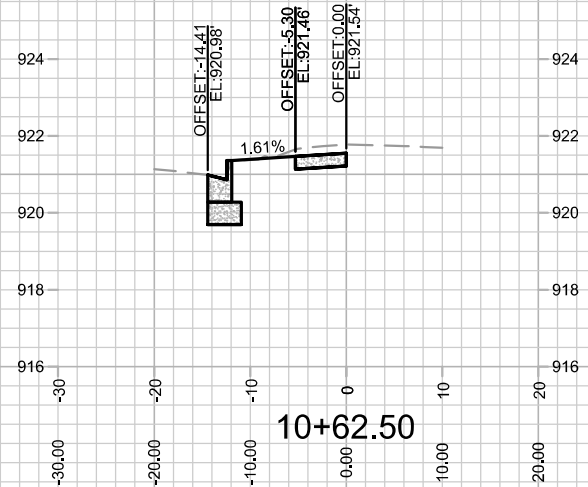
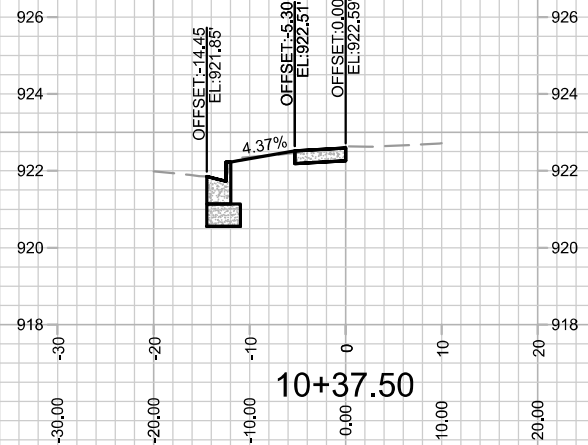
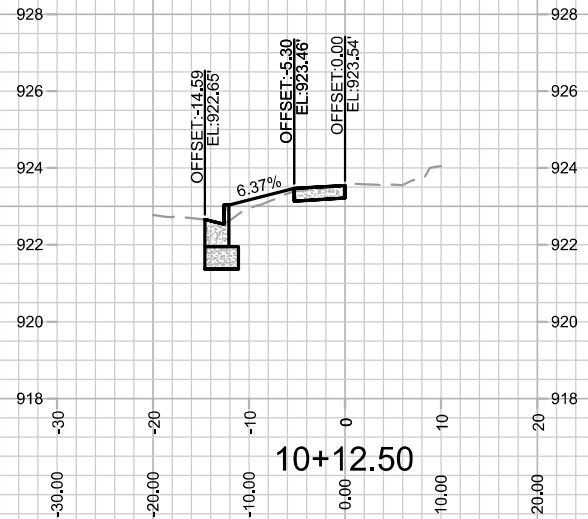
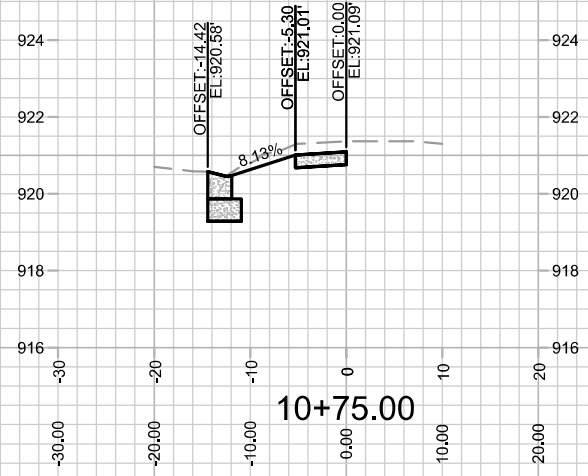
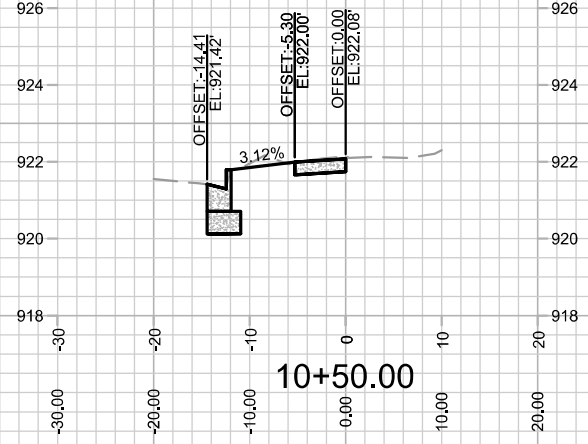
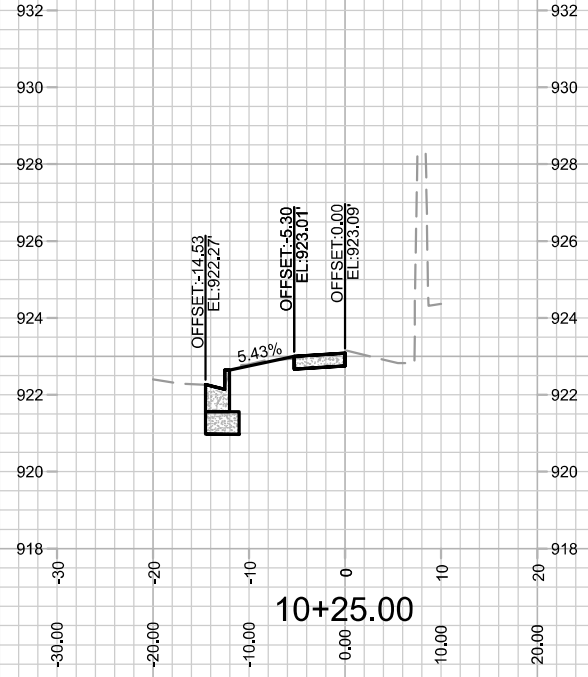


13880
X-2

CROSS SECTION - VAN HISE AVENUE
30 ASH STREET - WEST HIGH SCHOOL
M:\DESIGN\Projects\13880\CAD\Streets\13880EN-Corridor.dwg

13880
MADISON, WI
CONTRACT NO: 9111

MARK	REVISION	DATE	BY
13880	Designed By: IO	Date: 5/2/2023 9:13 AM	Scale: 1" = 20'
			X-2



MARK	REVISION	DATE	BY

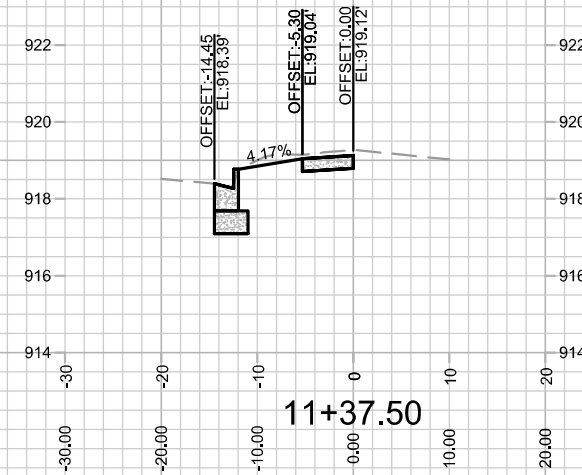
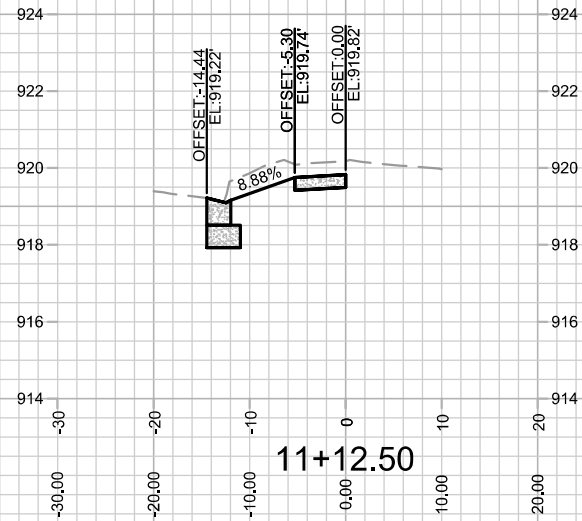
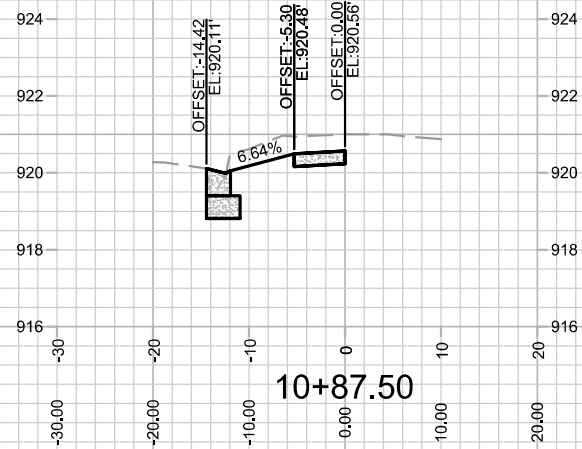
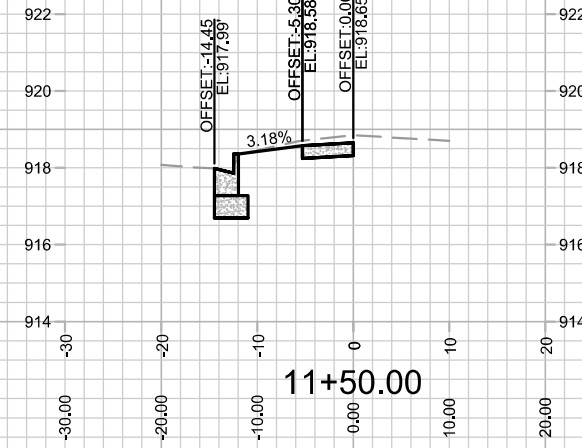
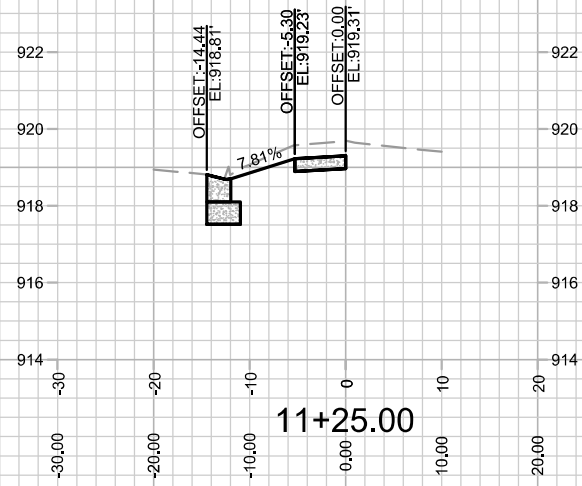
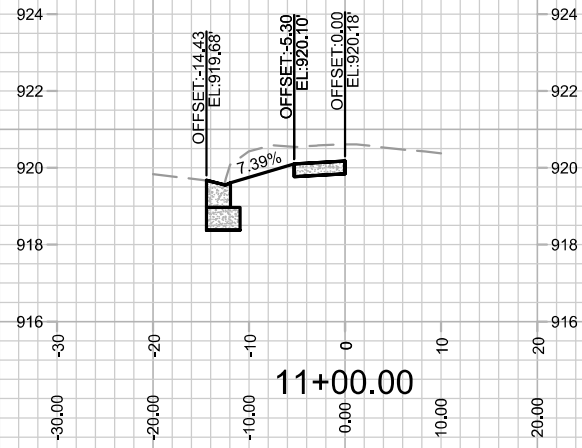
Designed By: IO
13880

Date: 5/2/2023 9:16 AM
Scale: 1" = 20'
X-3

13880
MADISON, WI
9111
CONTRACT NO:

CROSS SECTION - VAN HISE AVENUE
30 ASH STREET - WEST HIGH SCHOOL
M:\DESIGN\Projects\13880\CAD\Streets\13880EN-Corridor.dwg





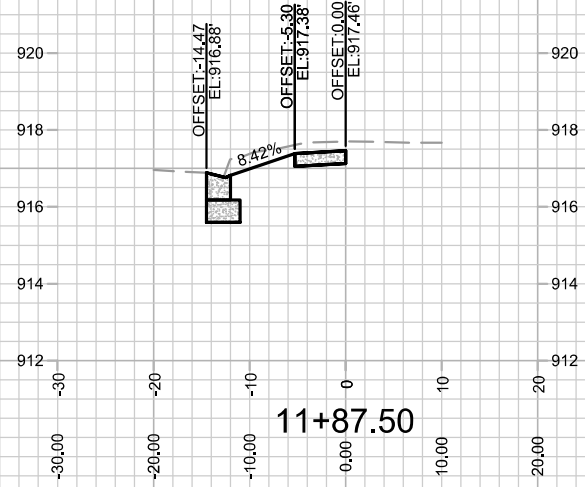
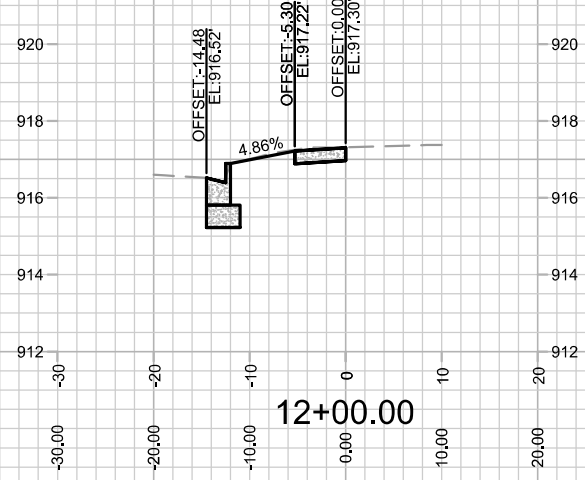
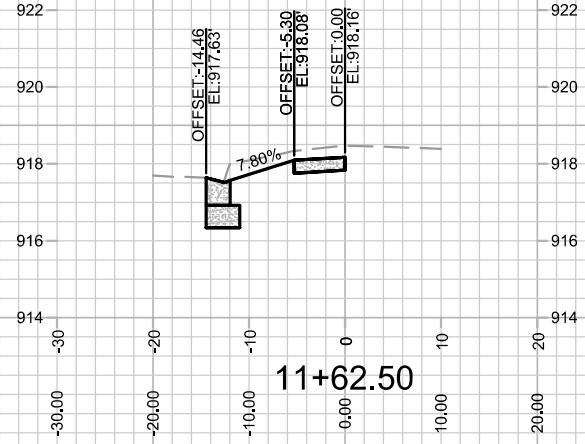
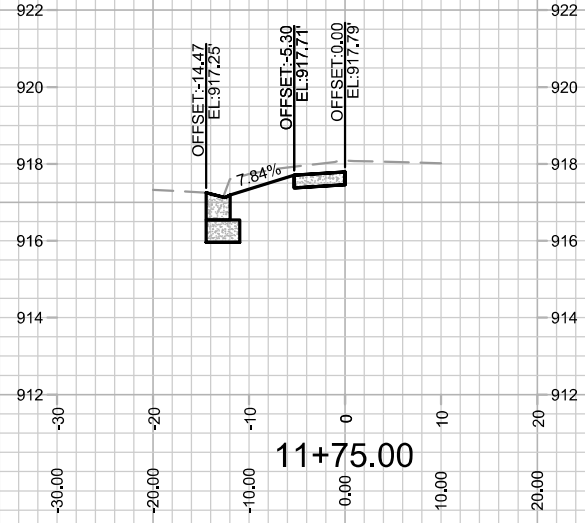
MARK	REVISION	DATE	BY

13880
 MADISON, WI
 CONTRACT NO: 9111
 Scale: 1" = 20'
 X-4

CROSS SECTION - VAN HISE AVENUE
 30 ASH STREET - WEST HIGH SCHOOL
 M:\DESIGN\Projects\13880\CAD\Streets\13880EN-Corridor.dwg



13880
 X-4

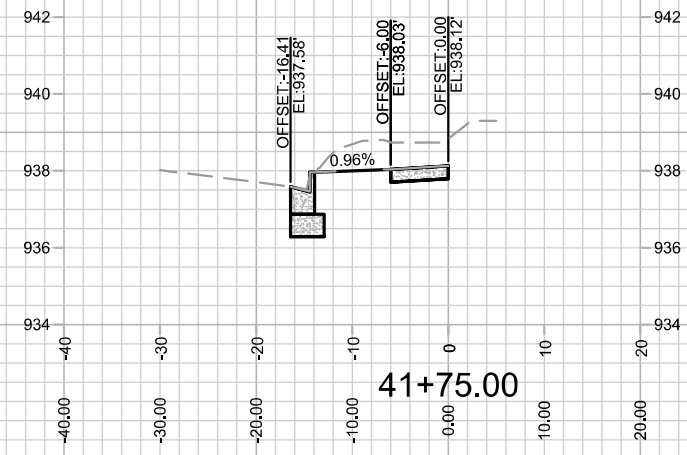
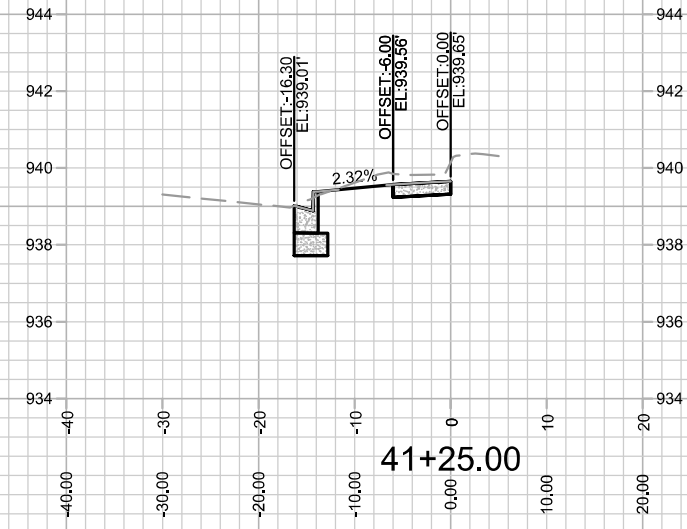
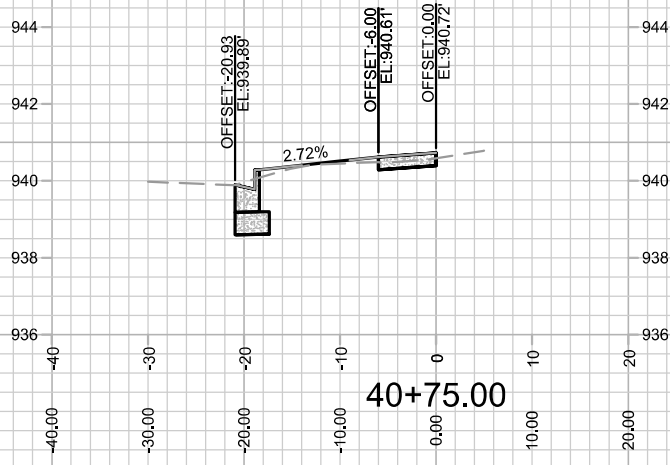
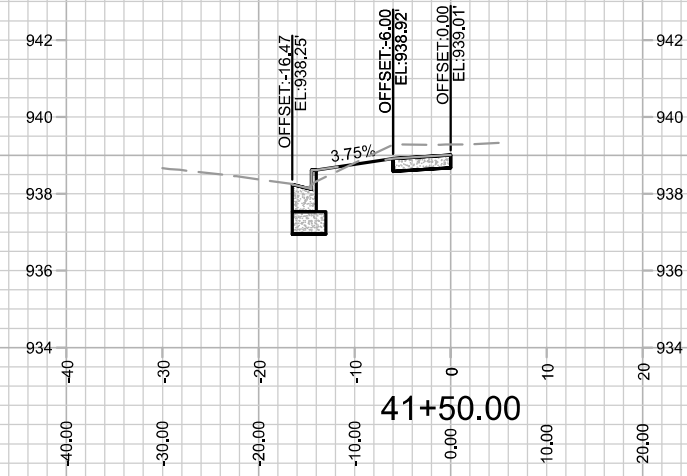
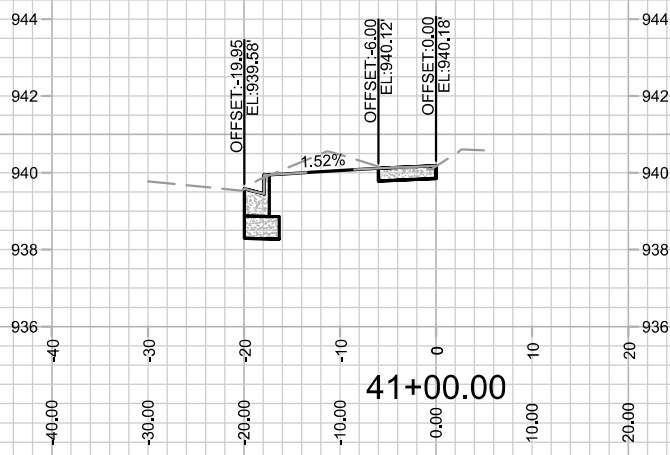


MARK	REVISION	DATE	BY

Designed By: IO
13880
Date: 5/2/2023 9:17 AM
Scale: 1" = 20'
X-5

13880
MADISON, WI
CONTRACT NO: 9111
M:\DESIGN\Projects\13880\CAD\Streets\13880EN-Corridor.dwg

13880
X-5

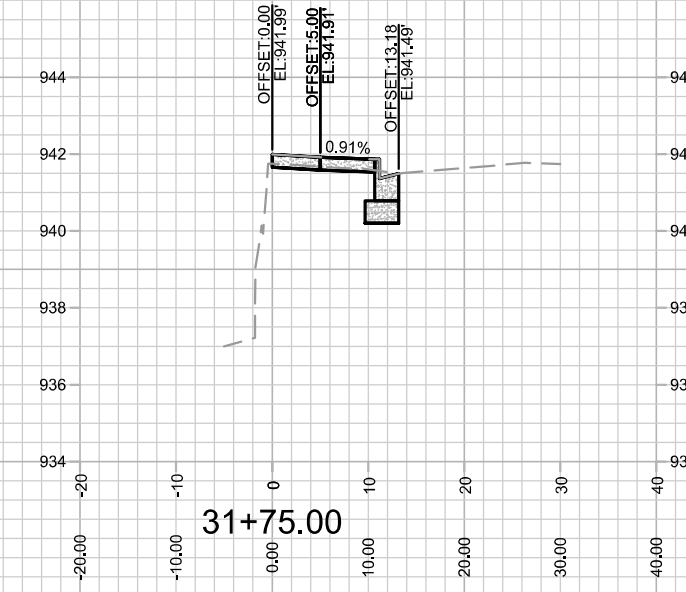
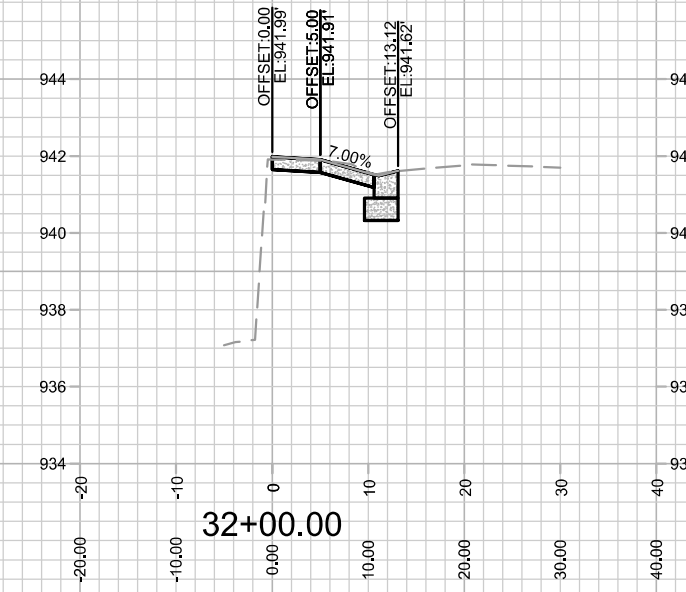
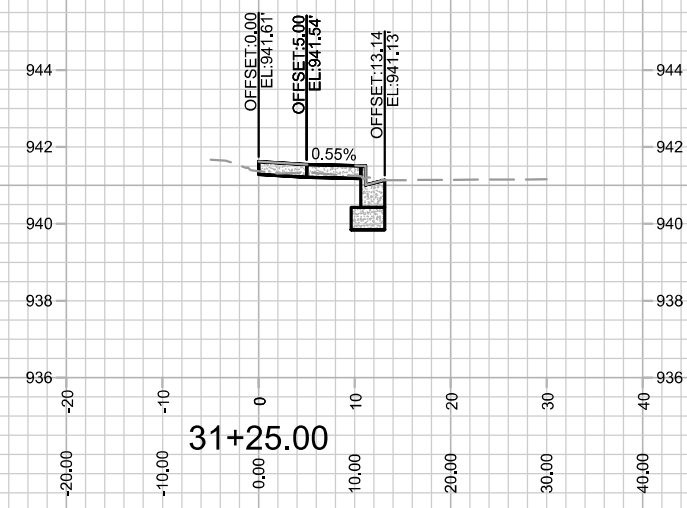
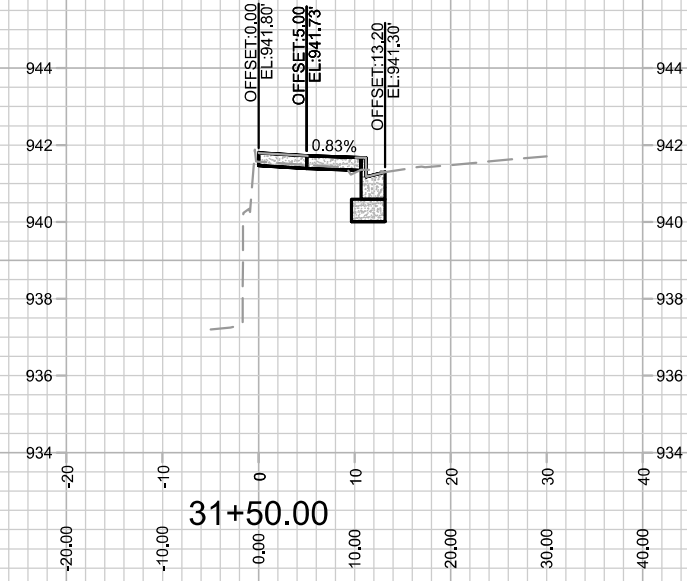
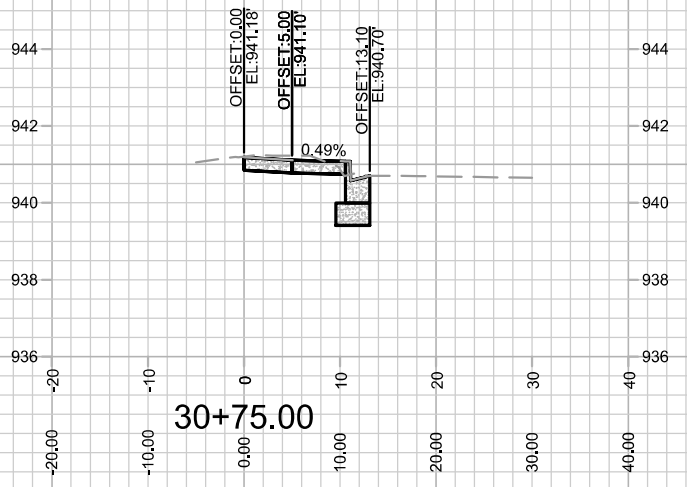
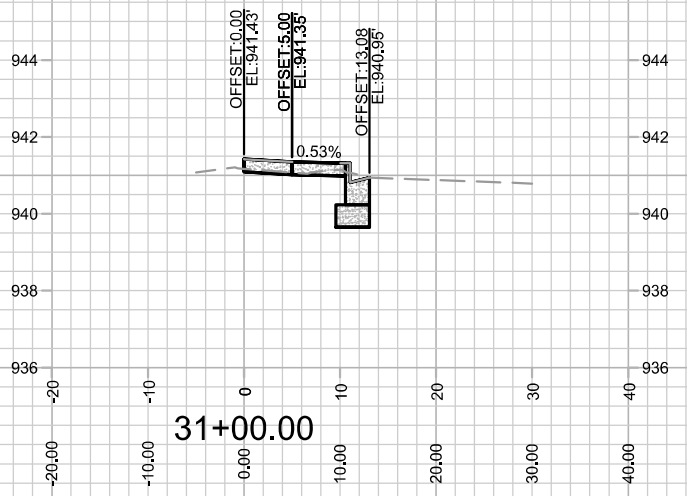


MARK	REVISION	DATE	BY

Designed By: IO
13880
Date: 5/2/2023 9:35 AM
Scale: 1" = 20'
X-6

13880
MADISON, WI
9111
CONTRACT NO:

CROSS SECTION - HIGHLAND AVENUE
30 ASH STREET - WEST HIGH SCHOOL
M:\DESIGN\Projects\13880\CAD\Streets\13880EN-Corridor.dwg

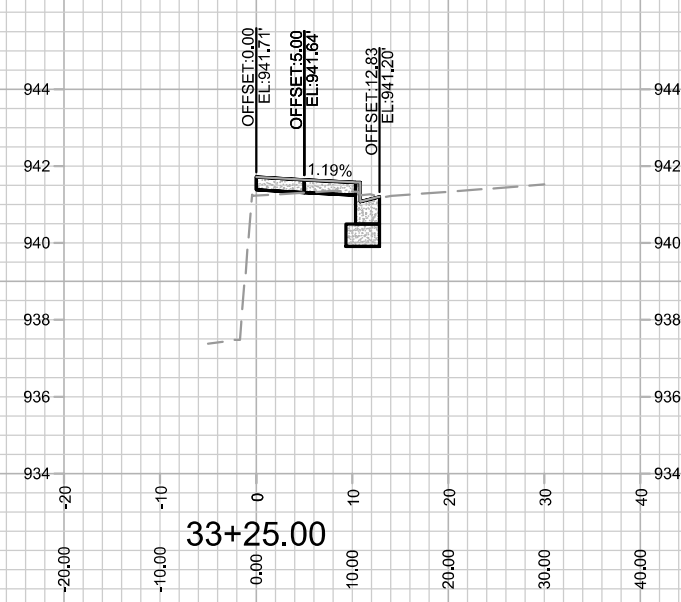
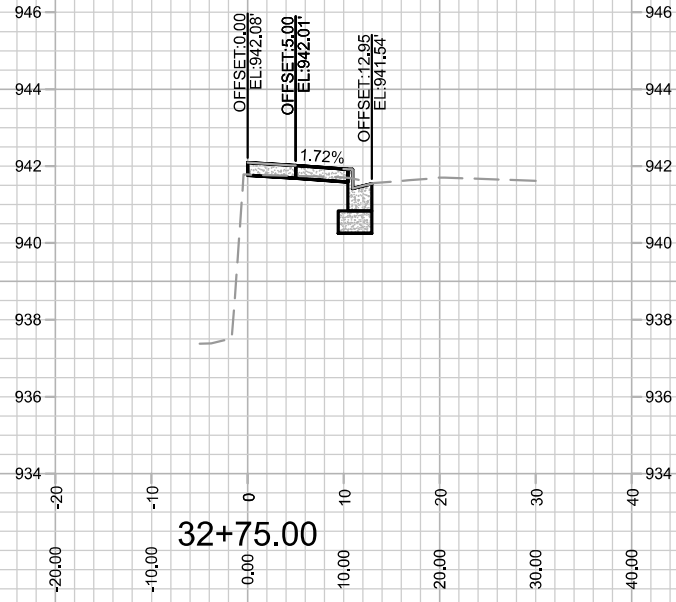
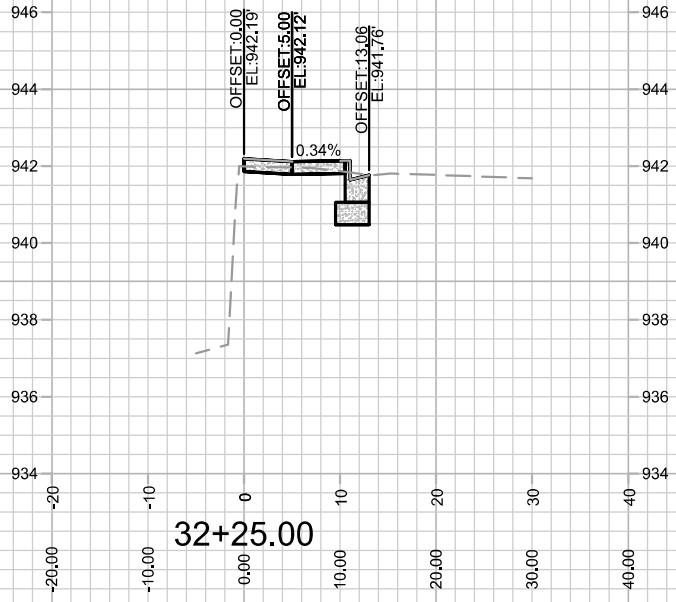
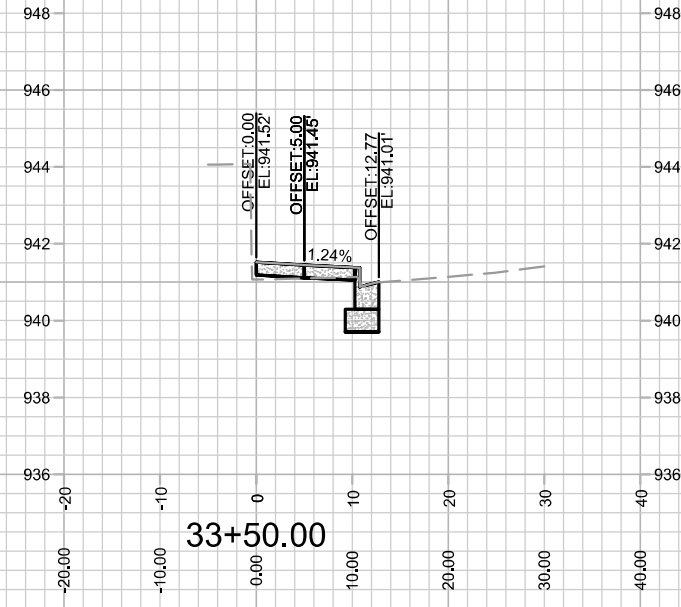
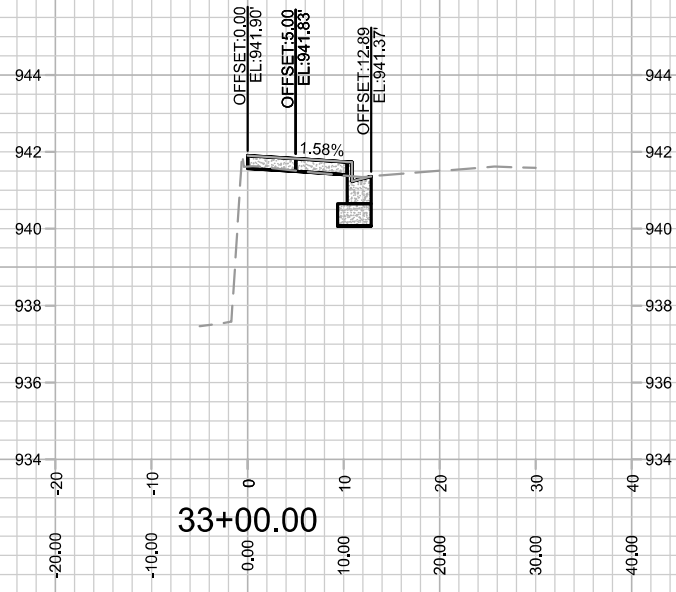
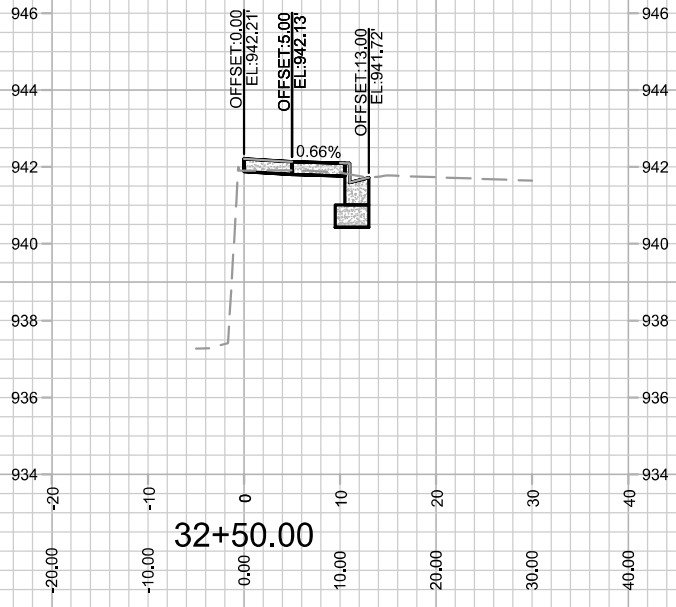


13880
X-7

CROSS SECTION - REGENT STREET
30 ASH STREET - WEST HIGH SCHOOL
M:\DESIGN\Projects\13880\CAD\Streets\13880EN-Corridor.dwg

13880
MADISON, WI
9111
CONTRACT NO:

MARK	REVISION	DATE	BY
13880 <td>6/15/2023 10:04 AM <td></td> <td>X-7</td> </td>	6/15/2023 10:04 AM <td></td> <td>X-7</td>		X-7



13880

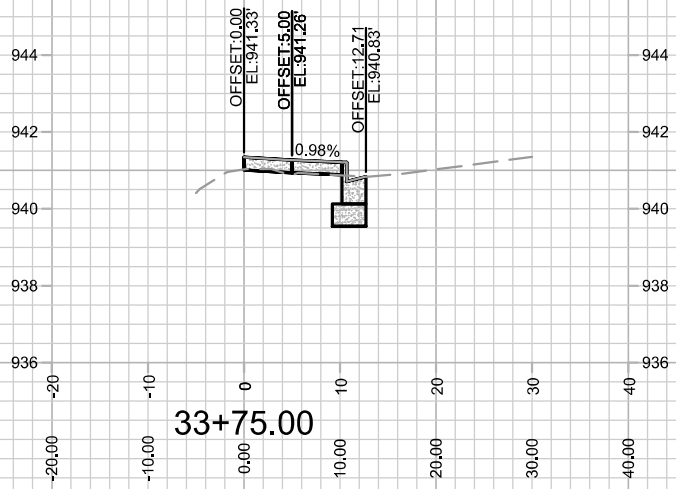
X-8

CROSS SECTION - REGENT STREET
30 ASH STREET - WEST HIGH SCHOOL

M:\DESIGN\Projects\13880\CAD\Streets\13880EN-Corridor.dwg

13880
MADISON, WI
9111
CONTRACT NO:

MARK	REVISION	DATE	BY
13880 <td></td> <td>6/15/2023 10:01 AM <td>X-8</td> </td>		6/15/2023 10:01 AM <td>X-8</td>	X-8



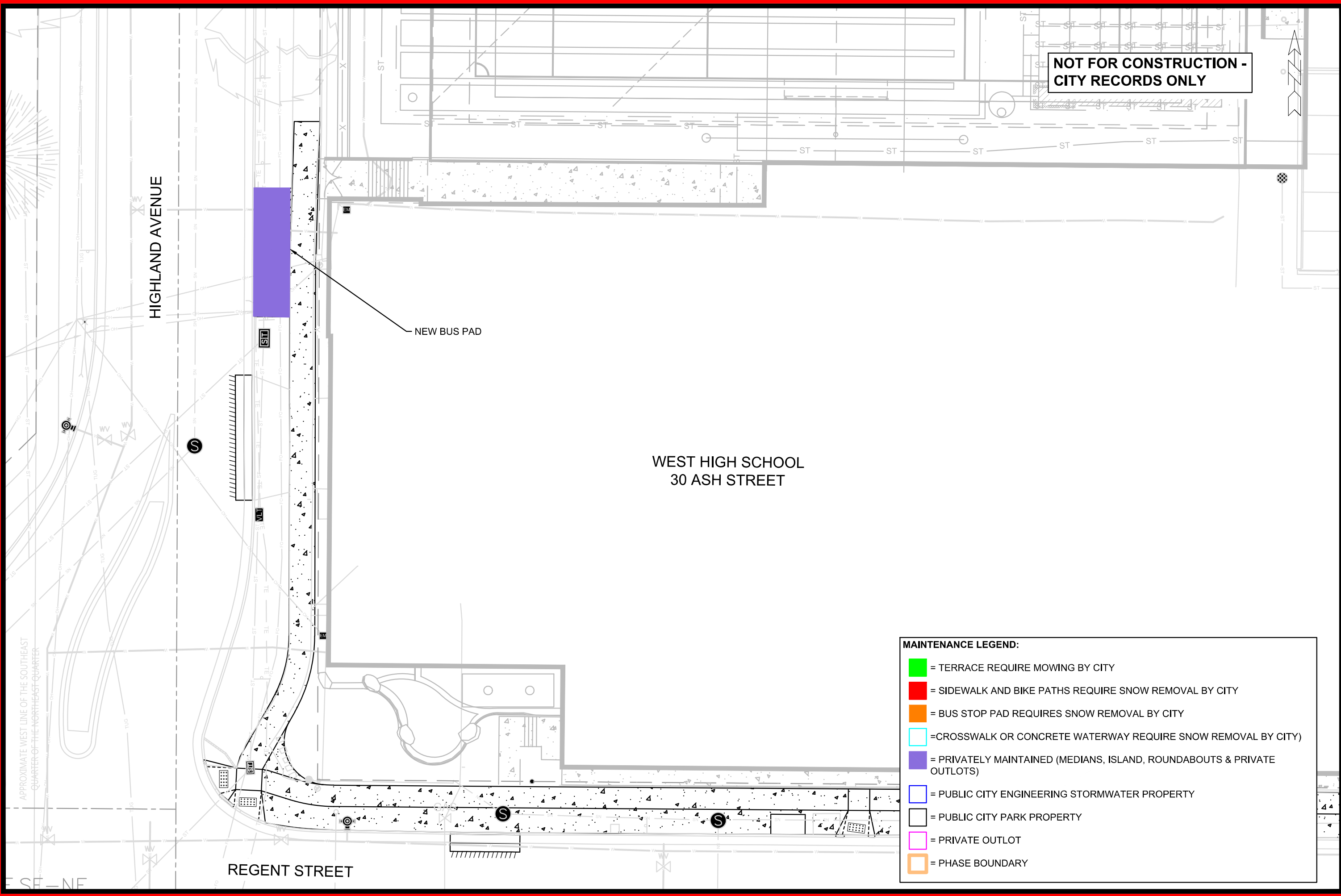
13880

X-9

CROSS SECTION - REGENT STREET
30 ASH STREET - WEST HIGH SCHOOL
M:\DESIGN\Projects\13880\CAD\Streets\13880EN-Corridor.dwg

13880
MADISON, WI
CONTRACT NO: 9111

MARK	REVISION	DATE	BY
13880	Designed By: IO	Date: 6/15/2023 10:01 AM	Scale: 1" = 20'



**NOT FOR CONSTRUCTION -
CITY RECORDS ONLY**


NEW BUS PAD

WEST HIGH SCHOOL
30 ASH STREET

HIGHLAND AVENUE

REGENT STREET

- MAINTENANCE LEGEND:**
- = TERRACE REQUIRE MOWING BY CITY
 - = SIDEWALK AND BIKE PATHS REQUIRE SNOW REMOVAL BY CITY
 - = BUS STOP PAD REQUIRES SNOW REMOVAL BY CITY
 - = CROSSWALK OR CONCRETE WATERWAY REQUIRE SNOW REMOVAL BY CITY)
 - = PRIVATELY MAINTAINED (MEDIANS, ISLAND, ROUNDABOUTS & PRIVATE OUTLOTS)
 - = PUBLIC CITY ENGINEERING STORMWATER PROPERTY
 - = PUBLIC CITY PARK PROPERTY
 - = PRIVATE OUTLOT
 - = PHASE BOUNDARY

<p>MAINTENANCE PLAN</p> <p>30 ASH STREET - WEST HIGH SCHOOL</p> <p>M:\DESIGN\Projects\13880\CAD\Streets\13880EN-Maintenance.dwg</p>	<p>13880</p> <p>MADISON, WI</p> <p>9111</p> <p>CONTRACT NO:</p>								
	<p>13880</p> <p>MN-1</p>								
<table border="1" style="width: 100%; border-collapse: collapse;"> <thead> <tr> <th>MARK</th> <th>REVISION</th> <th>DATE</th> <th>BY</th> </tr> </thead> <tbody> <tr> <td> </td> <td> </td> <td> </td> <td> </td> </tr> </tbody> </table> <p>Designed By: LD Date: 5/1/2023 12:29 PM Scale: 1/20</p>	MARK	REVISION	DATE	BY					<p>MN-1</p>
MARK	REVISION	DATE	BY						