

Madison, Wisconsin

CITY OF MADISON

CITY ENGINEERING DIVISION

DEPARTMENT OF PUBLIC WORKS

PLAN OF PROPOSED IMPROVEMENT

INDEX OF SHEETS

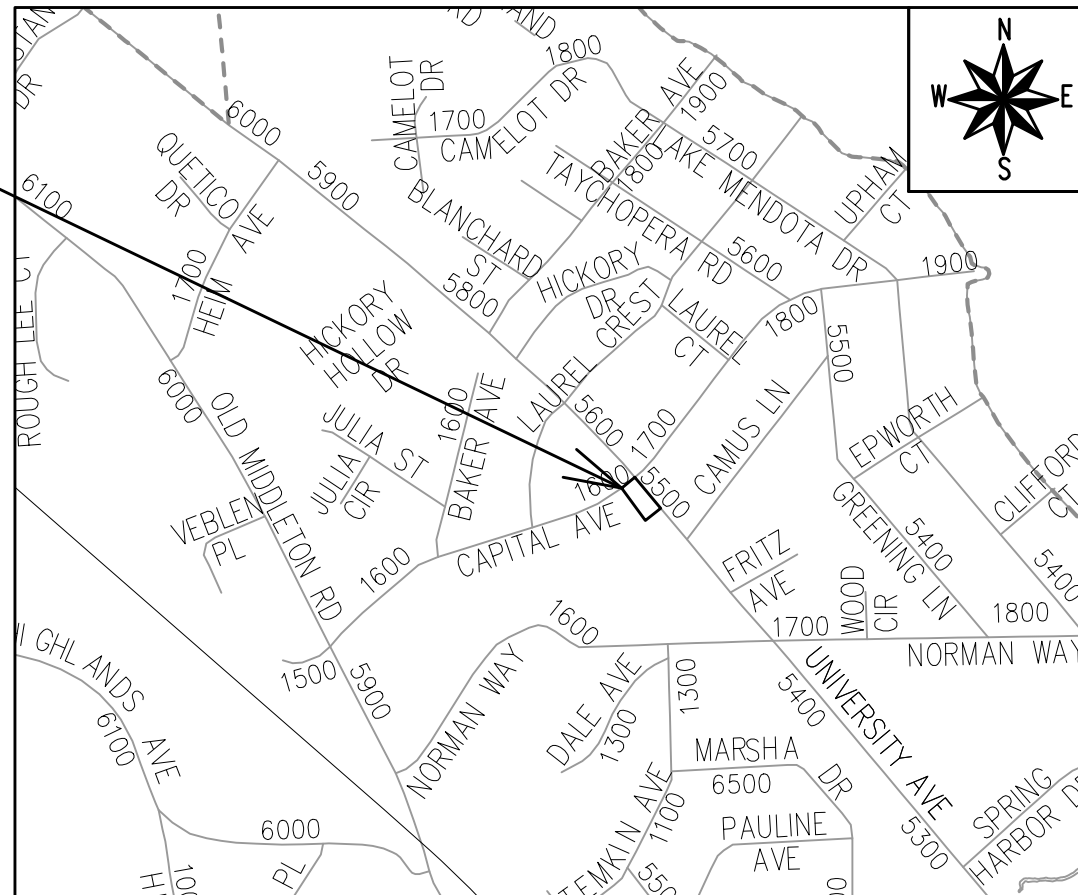
SHEET NO. D1	GENERAL NOTES
SHEET NO. D2	TYPICAL SECTIONS
SHEET NO. P1 - P2	SIDEWALK PLAN & PROFILE
SHEET NO. X1 - X2	CROSS SECTIONS
SHEET NO. U1	UTILITY PLAN
SHEET NO. MN1	MAINTENANCE PLAN

REVISION
3/2/23 - SEE SHEET U1.

5535 UNIVERSITY AVENUE

CITY PROJECT NO. 13888
CONTRACT NO. 8112

PROJECT
LOCATION



PUBLIC IMPROVEMENT PROJECT
APPROVED

JANUARY 18, 2022

BY THE COMMON COUNCIL
OF MADISON, WISCONSIN

PUBLIC IMPROVEMENT DESIGN
APPROVED BY:

Greg Fries

Dec 5, 2022

City Engineer

Date

STREET GRADES
DESIGNED BY:



Dec 6, 2022

STORM SEWER
DESIGNED BY:

LATERALS ONLY

WATER
DESIGNED BY:

LATERALS ONLY

SANITARY SEWER
DESIGNED BY:

LATERALS ONLY

PLOT SCALE: 1:1_XREF

PLOT NAME: ---

REV. DATE: 11/22/2022 9:29 AM




ORIGINATOR: CITY_OF_MADISON

ALL PROPOSED STREET TREE REMOVALS WITHIN THE RIGHT OF WAY SHALL BE REVIEWED BY CITY FORESTRY BEFORE THE PLAN COMMISSION MEETING. STREET TREE REMOVALS REQUIRE APPROVAL AND A TREE REMOVAL PERMIT ISSUED BY CITY FORESTRY. ANY STREET TREE REMOVALS REQUESTED AFTER THE DEVELOPMENT PLAN IS APPROVED BY THE PLAN COMMISSION OR THE BOARD OF PUBLIC WORKS AND CITY FORESTRY WILL REQUIRE A MINIMUM OF A 72-HOUR REVIEW PERIOD WHICH SHALL INCLUDE THE NOTIFICATION OF THE ALDERPERSON WITHIN WHO'S DISTRICT IS AFFECTED BY THE STREET TREE REMOVAL(S) PRIOR TO A TREE REMOVAL PERMIT BEING ISSUED.

AS DEFINED BY THE SECTION 107.13 OF CITY OF MADISON STANDARD SPECIFICATIONS FOR PUBLIC WORKS CONSTRUCTION: NO EXCAVATION IS PERMITTED WITHIN 5 FEET OF THE TRUNK OF THE STREET TREE OR WHEN CUTTING ROOTS OVER 3 INCHES IN DIAMETER. IF EXCAVATION IS NECESSARY, THE CONTRACTOR SHALL CONTACT MADISON CITY FORESTRY (266-4816) PRIOR TO EXCAVATION. CITY OF MADISON FORESTRY PERSONNEL SHALL ASSESS THE IMPACT TO THE TREE AND TO ITS ROOT SYSTEM PRIOR TO WORK COMMENCING. TREE PROTECTION SPECIFICATIONS CAN BE FOUND ON THE FOLLOWING WEBSITE: [HTTPS://WWW.CITYOFMADISON.COM/BUSINESS/PW/SPECS.CFM](https://www.cityofmadison.com/business/pw/specs.cfm)

DEVELOPER MUST SUBMIT A TRAFFIC CONTROL PLAN TO CITY TRAFFIC ENGINEERING AT LEAST 14 DAYS PRIOR TO THE START OF WORK. WORK SHALL NOT PROCEED UNTIL AN APPROVED TRAFFIC CONTROL PLAN IS IN PLACE.

CONTACT PROJECT ENGINEER AND STREET DESIGNER IKE OKAFOR AT IOKAFOR@CITYOFMADISON.COM FOR CAD AND ALIGNMENT DATA PRIOR TO STAKING.

CONVENTIONAL SIGNS	
FIELD VERIFY ALL UTILITY LOCATIONS	
GAS	—— G ——
STORM SEWER	—— ST ——
SANITARY SEWER	—— SN ——
WATER	—— W ——
BURIED ELECTRIC	—— E ——
OVERHEAD ELECTRIC	—— OH ——
POWER POLE	
ADA COMPLIANT RAMP W/ DETECTABLE WARNING FIELD	
COMBUSTIBLE FLUIDS	

UNDERDRAINS SHALL BE INSTALLED PER STANDARD DETAIL DRAWING 4.05 FOR 75' ON EACH SIDE OF THE LOW POINT, OR TO THE NEAREST CURB HIGH POINT. ALL UNDERDRAIN SHALL BE WRAPPED.

ALL GUTTERS SHALL DRAIN WITH A MINIMUM GRADE OF 0.5% TOWARD STORM SEWER INLETS.

ALL DITCHES SHALL DRAIN WITH A MINIMUM GRADE OF 0.5%

THE CROSS SLOPE OF SIDEWALKS AND BARRIER FREE SIDEWALK CURB RAMPS SHALL TYPICALLY BE 1.5%. THE LONGITUDINAL GRADE OF BARRIER FREE SIDEWALK CURB RAMPS SHALL NOT EXCEED 8.33%. ALL SIDEWALK RAMPS SHALL BE CONSTRUCTED ACCORDING TO S.D.D. 3.04. AT ALL OTHER LOCATIONS THE LONGITUDINAL GRADE OF SIDEWALKS SHALL NOT BE LESS THAN 0.5% AND SHALL DRAIN TOWARD STORM SEWER INLETS. ALL SIDEWALK AND SIDEWALK RAMP ELEVATIONS AND GRADES SHALL BE FIELD VERIFIED AND SET TO COMPLY WITH THE CITY OF MADISON STANDARD SPECIFICATIONS AND THE A.D.A. GUIDELINES.

CURB STATION AND OFFSETS SHALL BE TO THE EDGE OF PAVEMENT UNLESS OTHERWISE INDICATED. CURB ELEVATIONS SHALL BE TO THE EDGE OF PAVEMENT UNLESS OTHERWISE INDICATED.

POWER POLES AND OTHER OBSTRUCTIONS SHALL BE MOVED TO PROVIDE 2 FEET MINIMUM OF CLEAR DISTANCE FROM ANY FACE OF CURB OR EDGE OF SIDEWALK.

ANY INFORMATION SHOWN ON THIS PLAN, WHICH IS NOT PART OF THIS RIGHT-OF-WAY PROJECT, IS PRELIMINARY AND NOT FOR CONSTRUCTION.

THERE MAY BE EXISTING UTILITIES OR OTHER FEATURES WHICH ARE EITHER NOT SHOWN OR SHOWN INCORRECTLY ON THIS PLAN. IT IS THE RESPONSIBILITY OF THE DEVELOPER TO LOCATE AND IDENTIFY ALL UTILITIES AND TOPOGRAPHY WHICH MAY AFFECT THE CONSTRUCTION OF THESE IMPROVEMENTS.

ALL PERMANENT SIGNING AND POSTING WILL BE DETERMINED AND PROVIDED BY THE TRAFFIC ENGINEERING DIVISION, FOLLOWING CONSTRUCTION OF THESE IMPROVEMENTS.

THE DEVELOPER SHALL PROVIDE, INSTALL AND MAINTAIN ALL STREET END BARRICADES, SIGNING AND TRAFFIC CONTROL, AS REQUIRED BY THE CITY TRAFFIC ENGINEER.

PAVEMENT SAWCUTS SHALL BE AS DIRECTED BY THE CITY CONSTRUCTION ENGINEER. SAWCUTS SHOWN ON THE PLAN ARE APPROXIMATE.

ALL WORK IN THE RIGHT OF WAY AND PUBLIC EASEMENTS SHALL BE IN ACCORDANCE WITH THE CITY OF MADISON STANDARD SPECIFICATIONS FOR PUBLIC WORKS CONSTRUCTION

ALL UTILITY VERIFICATIONS AND ACCURACY OF THE DRAWINGS ARE THE RESPONSIBILITY OF THE DEVELOPER. ANY CONFLICTS THAT ARISE FROM MISSING OR ERRONEOUS INFORMATION WILL BE AT THE EXPENSE OF THE DEVELOPER. NO PRECAST WILL BE APPROVED FOR STORM SEWER OR SANITARY SEWER UNTIL ALL POTENTIAL UTILITY CONFLICTS ARE RESOLVED.

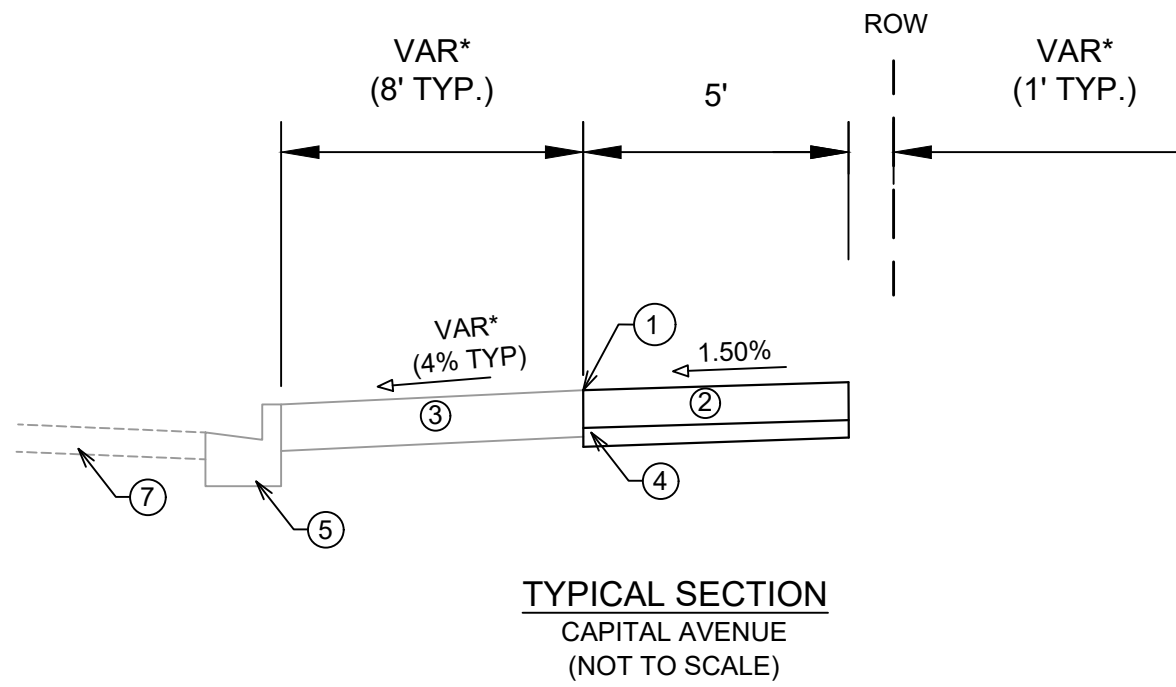
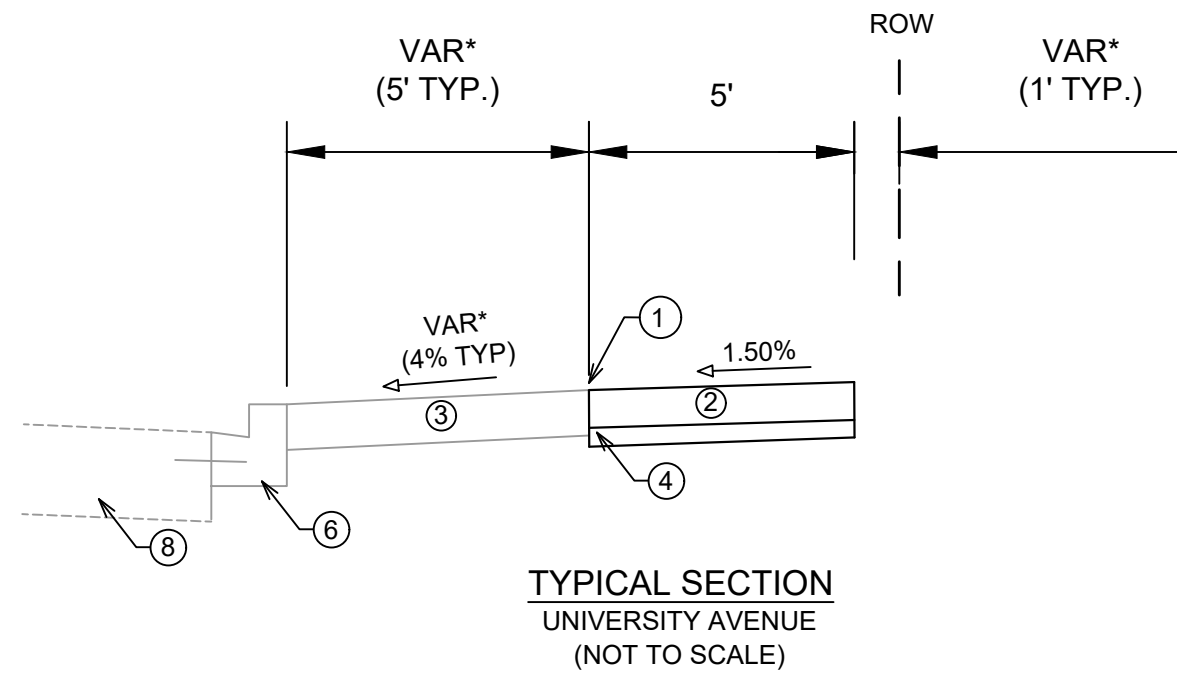
MARK	REVISION	DATE	BY
13888		10/19/2022 12:52 PM	
Designed By: ID	Scale: #####		D-1

13888
MADISON, WI
8112
CONTRACT NO:

GENERAL NOTES
5535 UNIVERSITY AVENUE
M:\DESIGN\Projects\13888\CAD\Streets\13888EN-Details.dwg



13888
D-1



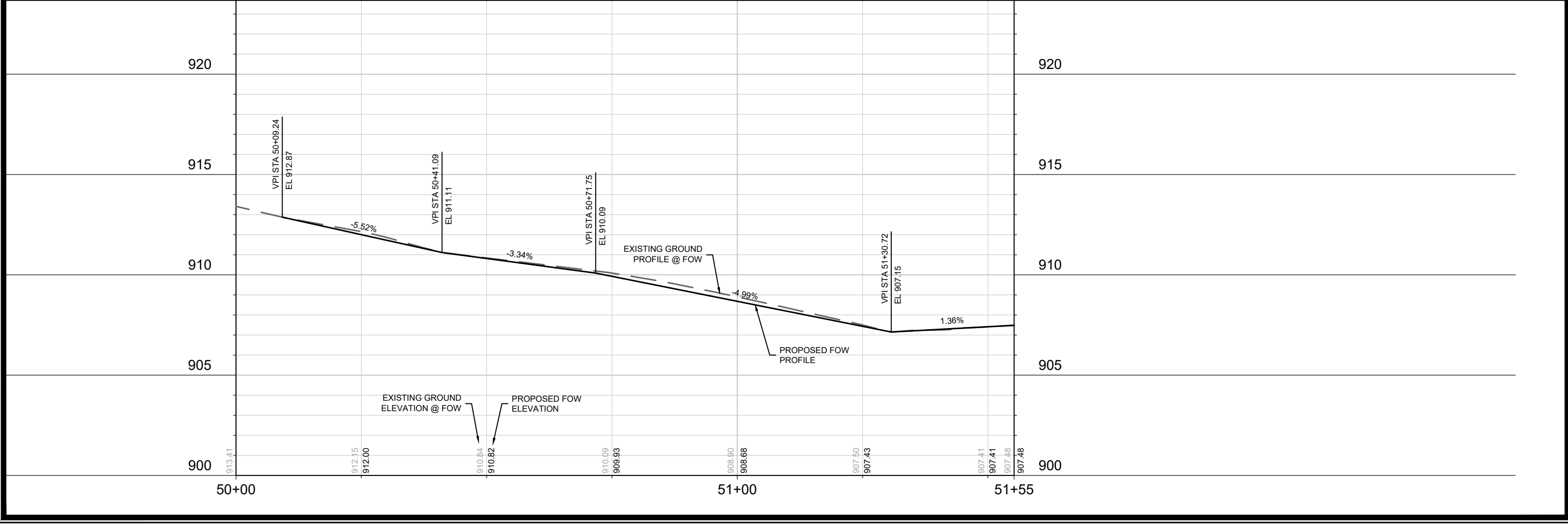
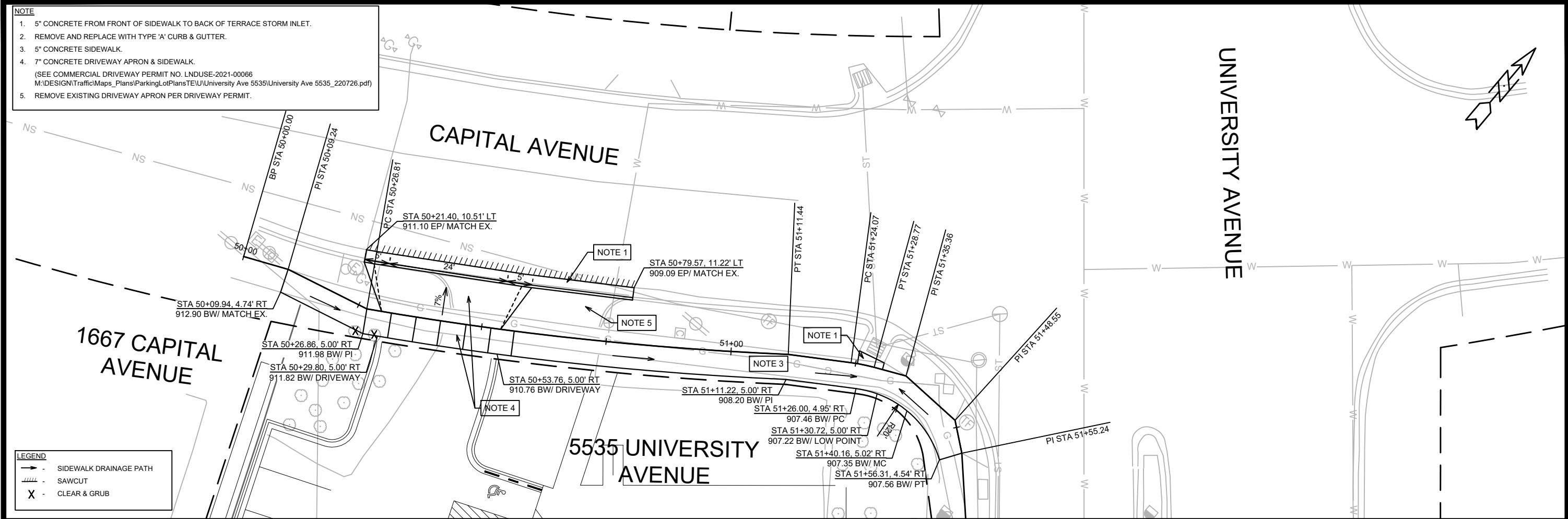
- ① POINT REFERRED TO ON PROFILE.
- ② 5" CONCRETE SIDEWALK.
- ③ 6" TOP SOIL, SEED & MAT.
- ④ 3" SELECT FILL SIDEWALK BASE.
- ⑤ EX. TYPE 'A' CONCRETE CURB & GUTTER TO REMAIN.
- ⑥ EX. TYPE 'H' CONCRETE CURB & GUTTER TO REMAIN.
- ⑦ EX. ASPHALT PAVEMENT TO REMAIN.
- ⑧ EX. CONCRETE PAVEMENT TO REMAIN.


SPECIAL NOTES
 * SEE P & X SHEETS FOR SLOPES AND DIMENSIONS.

13888	MADISON, WI	8112	CONTRACT NO:	D-2
TYPICAL SECTIONS				
5535 UNIVERSITY AVENUE				
M:\DESIGN\Projects\13888\CAD\Streets\13888EN-Details.dwg				
13888				
D-2				

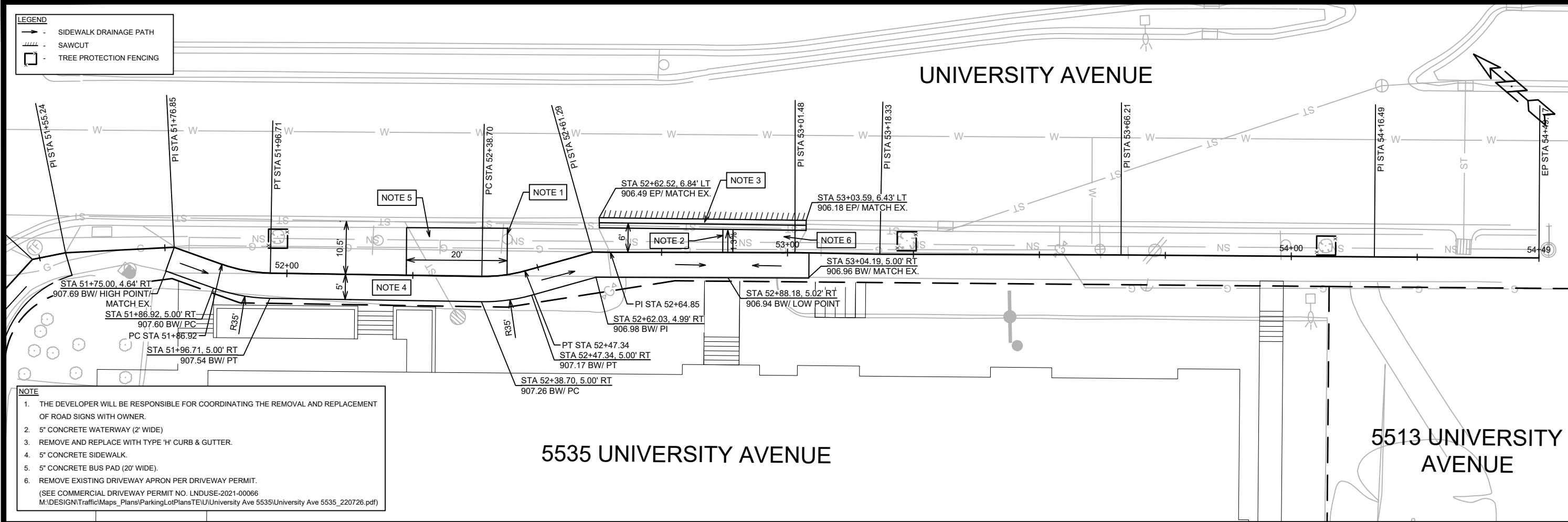
- NOTE**
- 5" CONCRETE FROM FRONT OF SIDEWALK TO BACK OF TERRACE STORM INLET.
 - REMOVE AND REPLACE WITH TYPE 'A' CURB & GUTTER.
 - 5" CONCRETE SIDEWALK.
 - 7" CONCRETE DRIVEWAY APRON & SIDEWALK.
(SEE COMMERCIAL DRIVEWAY PERMIT NO. LNDUSE-2021-00066
M:\DESIGN\Traffic\Maps_Plans\ParkingLotPlans\TEU\University Ave 5535\University Ave 5535_220726.dwg)
 - REMOVE EXISTING DRIVEWAY APRON PER DRIVEWAY PERMIT.

- LEGEND**
- - - SIDEWALK DRAINAGE PATH
 - /// SAWCUT
 - X CLEAR & GRUB

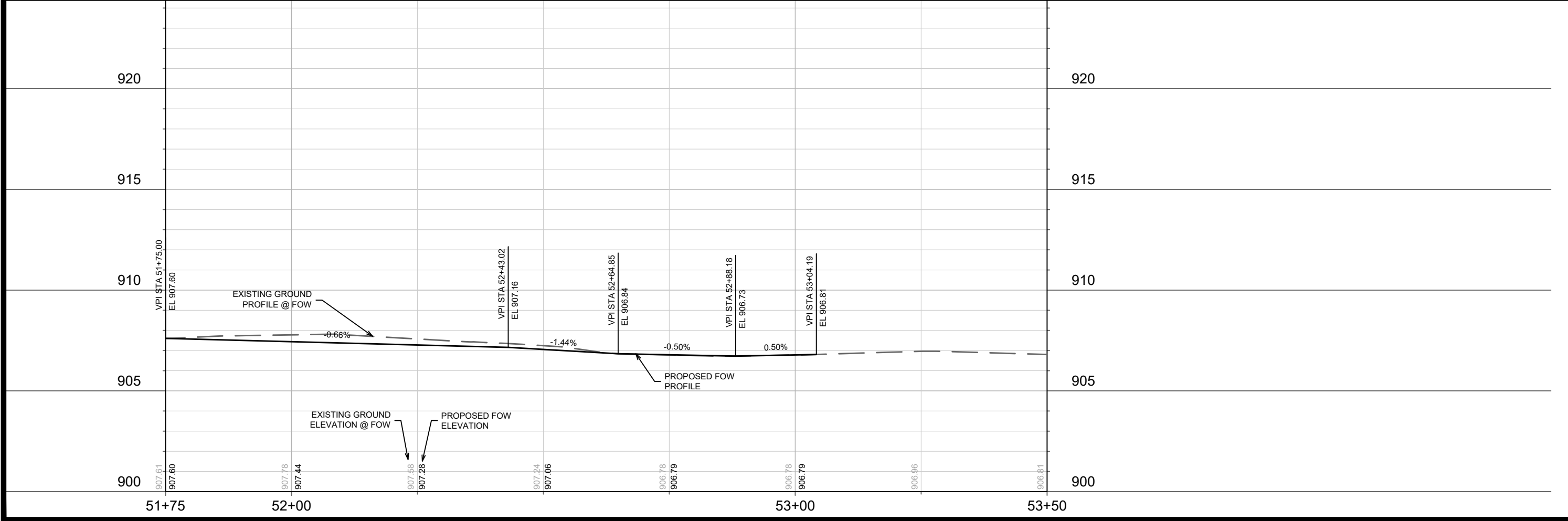


	13888 P-1	13888 MADISON, WI 8112 CONTRACT NO:
M:\DESIGN\Projects\13888\CAD\Streets\13888EN-PnP.dwg		

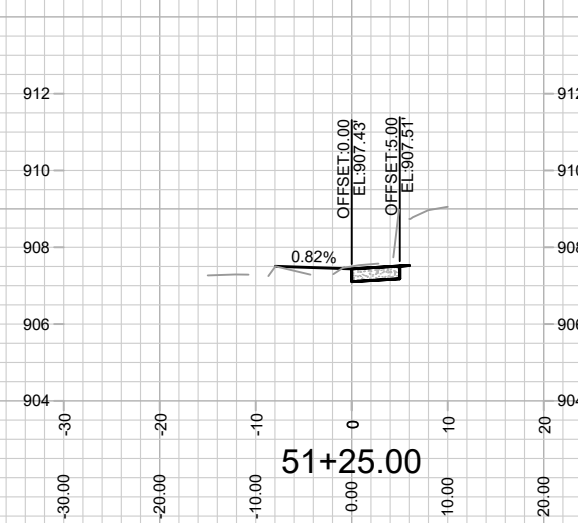
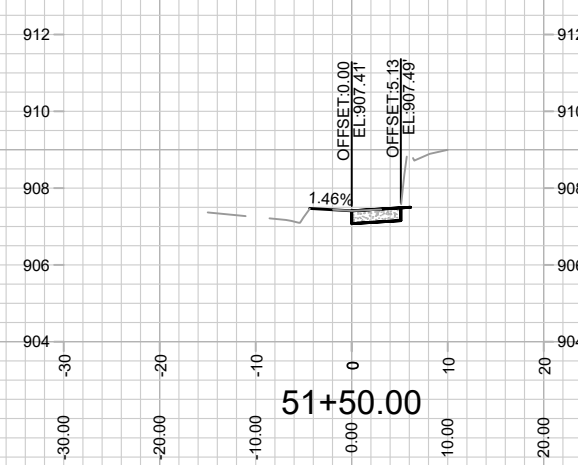
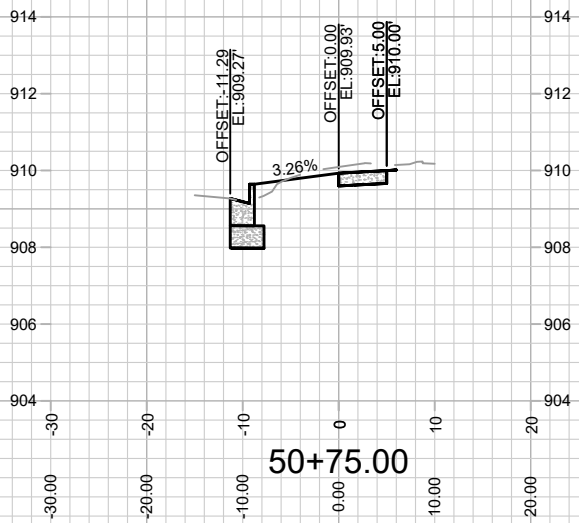
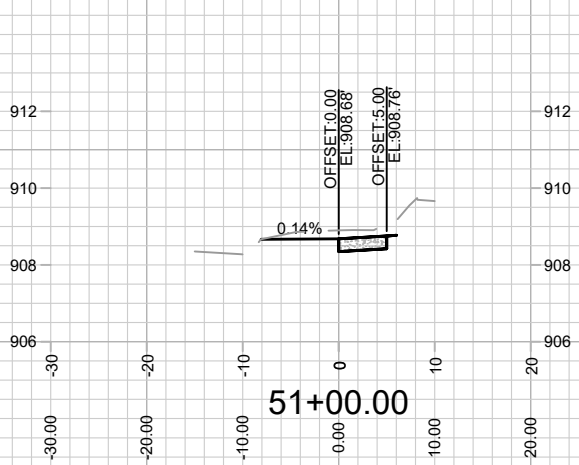
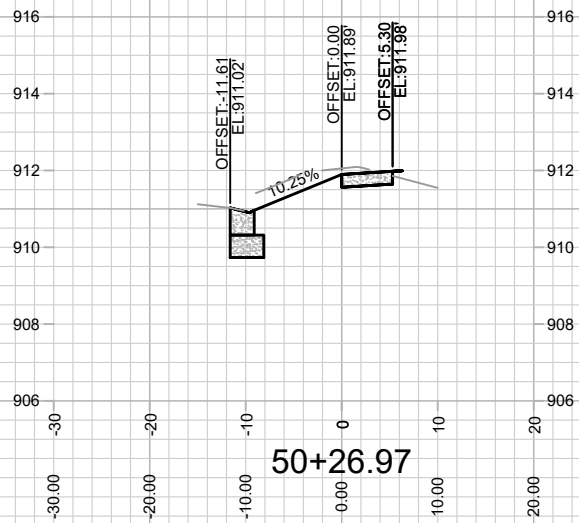
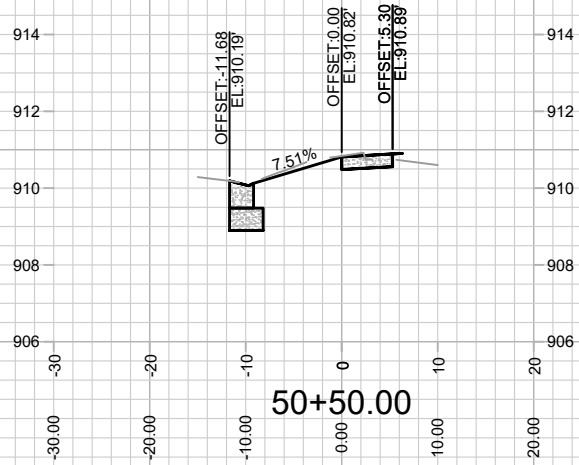
	SIDEWALK DRAINAGE PATH
	SAWCUT
	TREE PROTECTION FENCING



- NOTE**
1. THE DEVELOPER WILL BE RESPONSIBLE FOR COORDINATING THE REMOVAL AND REPLACEMENT OF ROAD SIGNS WITH OWNER.
 2. 5" CONCRETE WATERWAY (2' WIDE)
 3. REMOVE AND REPLACE WITH TYPE 'H' CURB & GUTTER.
 4. 5" CONCRETE SIDEWALK.
 5. 5" CONCRETE BUS PAD (20' WIDE).
 6. REMOVE EXISTING DRIVEWAY APRON PER DRIVEWAY PERMIT.
(SEE COMMERCIAL DRIVEWAY PERMIT NO. LNDUSE-2021-00066
M:\DESIGN\Traffic\Plans\ParkingLotPlans\TE\U\University Ave 5535\University Ave 5535_220726.pdf)



MARK	REVISION	DATE	BY
Designated By: ID	Date: 11/27/2022 9:16 AM	Scale: 1/20	P-2
13888	8112	CONTRACT NO:	
13888	MADISON, WI	SIDEWALK PLAN & PROFILE - UNIVERSITY AVENUE	
5535 UNIVERSITY AVENUE	M:\DESIGN\Projects\13888\CAD\Streets\13888EN-PnP.dwg		
13888	CITY OF MADISON WISCONSIN		
P-2			



MARK	REVISION	DATE	BY
13888			

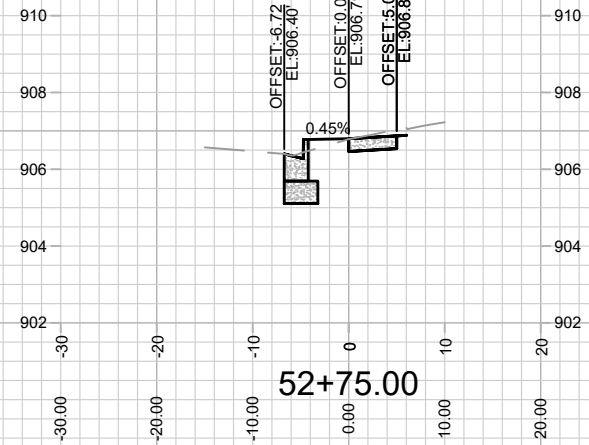
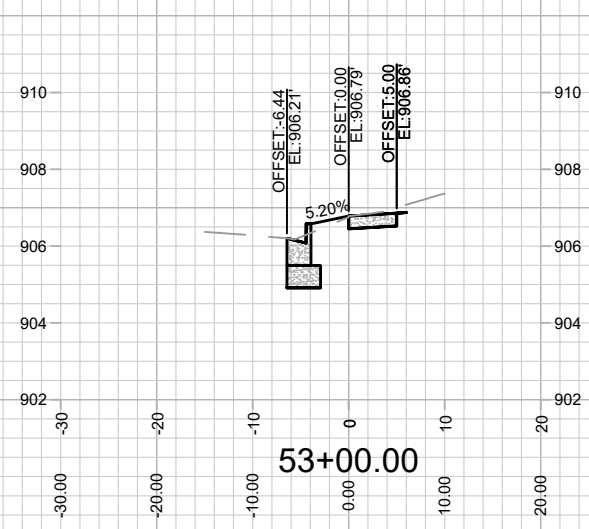
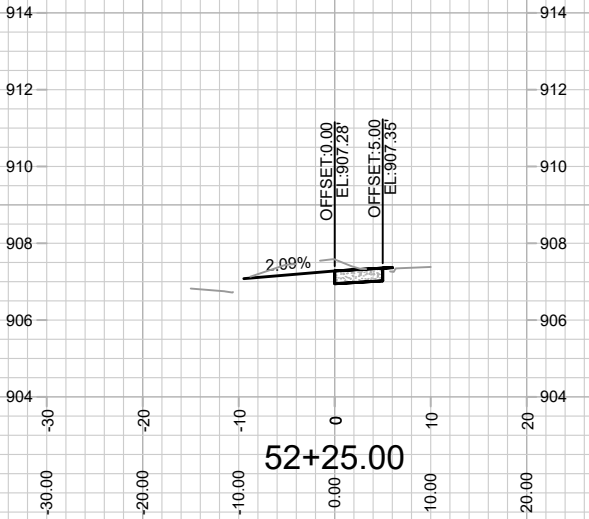
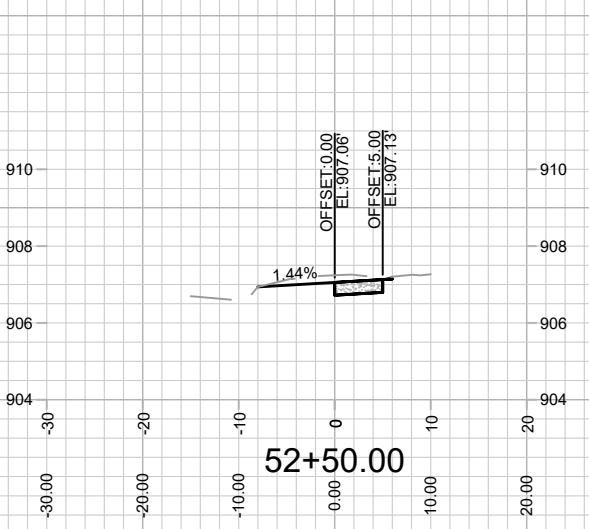
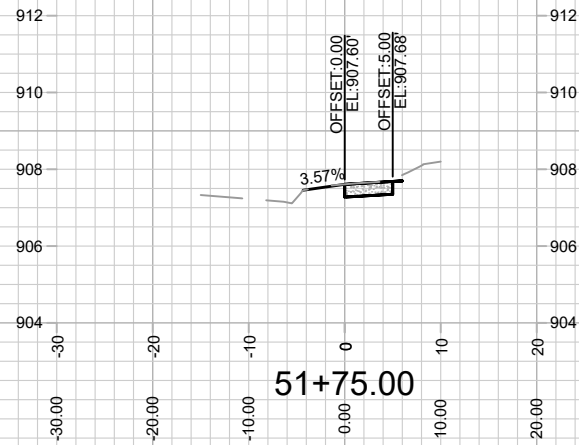
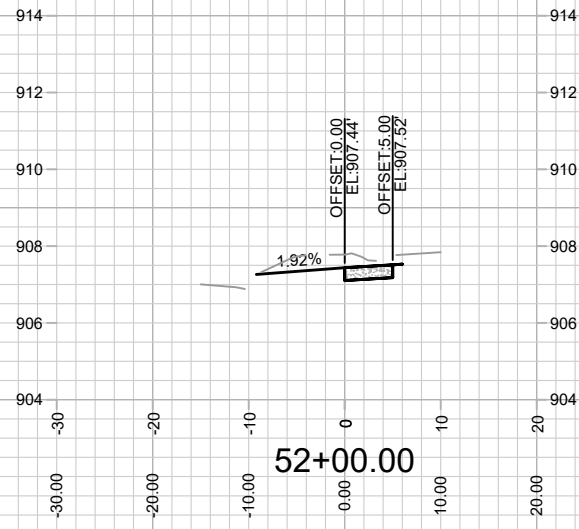
13888
MADISON, WI
CONTRACT NO: **8112**

CROSS SECTIONS - CAPITAL AVENUE
5535 UNIVERSITY AVENUE
M:\DESIGN\Projects\13888\CAD\Streets\13888EN-A\IP\Prof&Corridor_Setup.dwg



13888

X-1



MARK	REVISION	DATE	BY

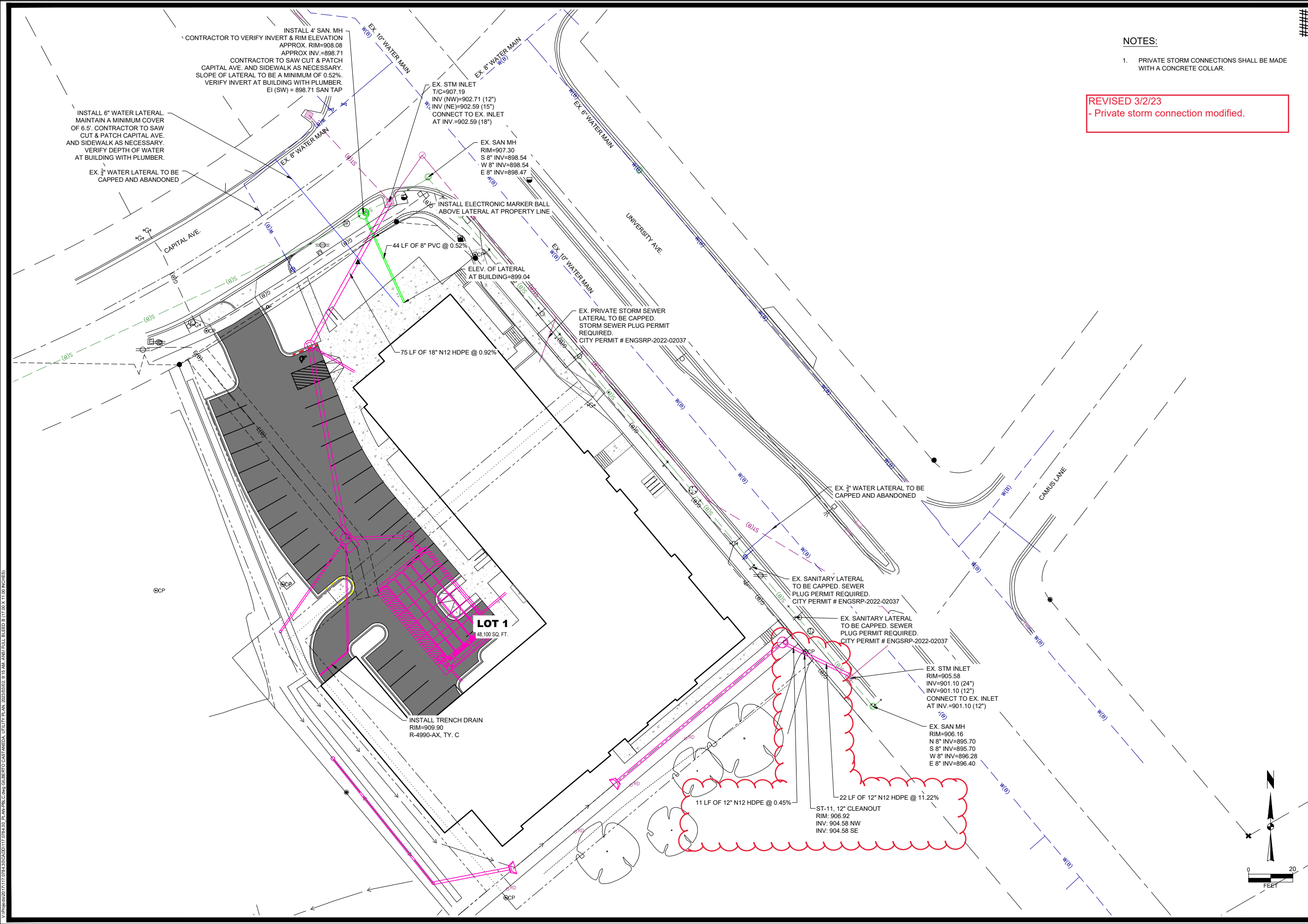
13888
MADISON, WI
8112
CONTRACT NO:

CROSS SECTIONS - UNIVERSITY AVENUE
5535 UNIVERSITY AVENUE
M:\DESIGN\Projects\13888\CAD\Streets\13888EN-AI\Prof&Corridor_Setup.dwg



13888
X-2

Scale: 1" = 20'



NOTES:

- PRIVATE STORM CONNECTIONS SHALL BE MADE WITH A CONCRETE COLLAR.

REVISED 3/2/23
 - Private storm connection modified.

####

STORM SEWER MODIFICATIONS	03-02-23	BCA	BY
CITY COMMENTS	11-29-22	BCA	DATE
CITY COMMENTS	11-17-22	BCA	DATE
CITY COMMENTS	06-13-22	BCA	DATE
REVISION	Scale: 1" = 20'		
Checked By: MLC	Date: 03-15-2022		
Engineer: BCA	Technician: TECH		
T-R-S:			Sheet U-1
Project No: 117.0784.30			

5535 UNIVERSITY AVENUE
 CONTRACT NO.: 8112
 PROJECT NO.: 13888

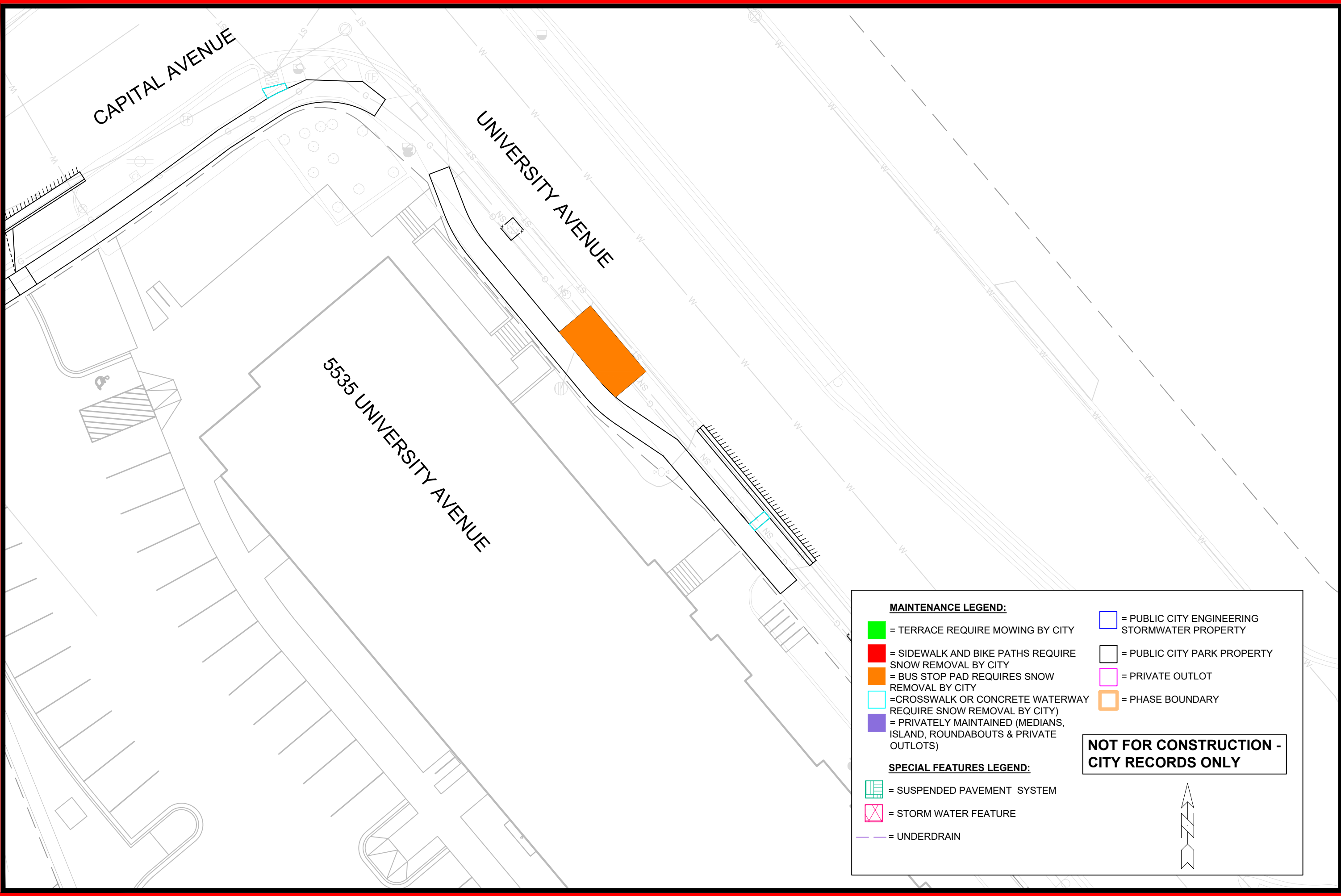
UTILITY PLAN

CITY OF MADISON, DANE COUNTY, WI

SNYDER & ASSOCIATES, INC.
 5010 VOGES ROAD
 MADISON, WISCONSIN 53718
 608-835-0444 | www.snyder-associates.com



V:\projects\1170784\30\DWG\1170784_30_UTILITY_PLAN.dwg 2/22/2022 9:15 AM ANSI FULL PLOT 8 1/2 X 11 1/2 INCHES



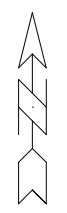
MAINTENANCE LEGEND:

- = TERRACE REQUIRE MOWING BY CITY
- = SIDEWALK AND BIKE PATHS REQUIRE SNOW REMOVAL BY CITY
- = BUS STOP PAD REQUIRES SNOW REMOVAL BY CITY
- = CROSSWALK OR CONCRETE WATERWAY REQUIRE SNOW REMOVAL BY CITY)
- = PRIVATELY MAINTAINED (MEDIANS, ISLAND, ROUNDABOUTS & PRIVATE OUTLOTS)
- = PUBLIC CITY ENGINEERING STORMWATER PROPERTY
- = PUBLIC CITY PARK PROPERTY
- = PRIVATE OUTLOT
- = PHASE BOUNDARY

SPECIAL FEATURES LEGEND:

- = SUSPENDED PAVEMENT SYSTEM
- = STORM WATER FEATURE
- = UNDERDRAIN

NOT FOR CONSTRUCTION - CITY RECORDS ONLY



MAINTENANCE PLAN
 13888
 MADISON, WI
 5535 UNIVERSITY AVENUE
 CONTRACT NO: 8112

MARK	REVISION	DATE	BY
13888			
Designed By: ID	Date: 10/19/2022 2:11 PM	Scale: 1/20	MN-1


 13888
 MN-1

M:\DESIGN\Projects\13888\CAD\Streets\13888EN-Maintenance.dwg