

Madison, Wisconsin

CITY OF MADISON

CITY ENGINEERING DIVISION

DEPARTMENT OF PUBLIC WORKS

PLAN OF PROPOSED IMPROVEMENT

2222 E. WASHINGTON AVE - EAST HIGH SCHOOL

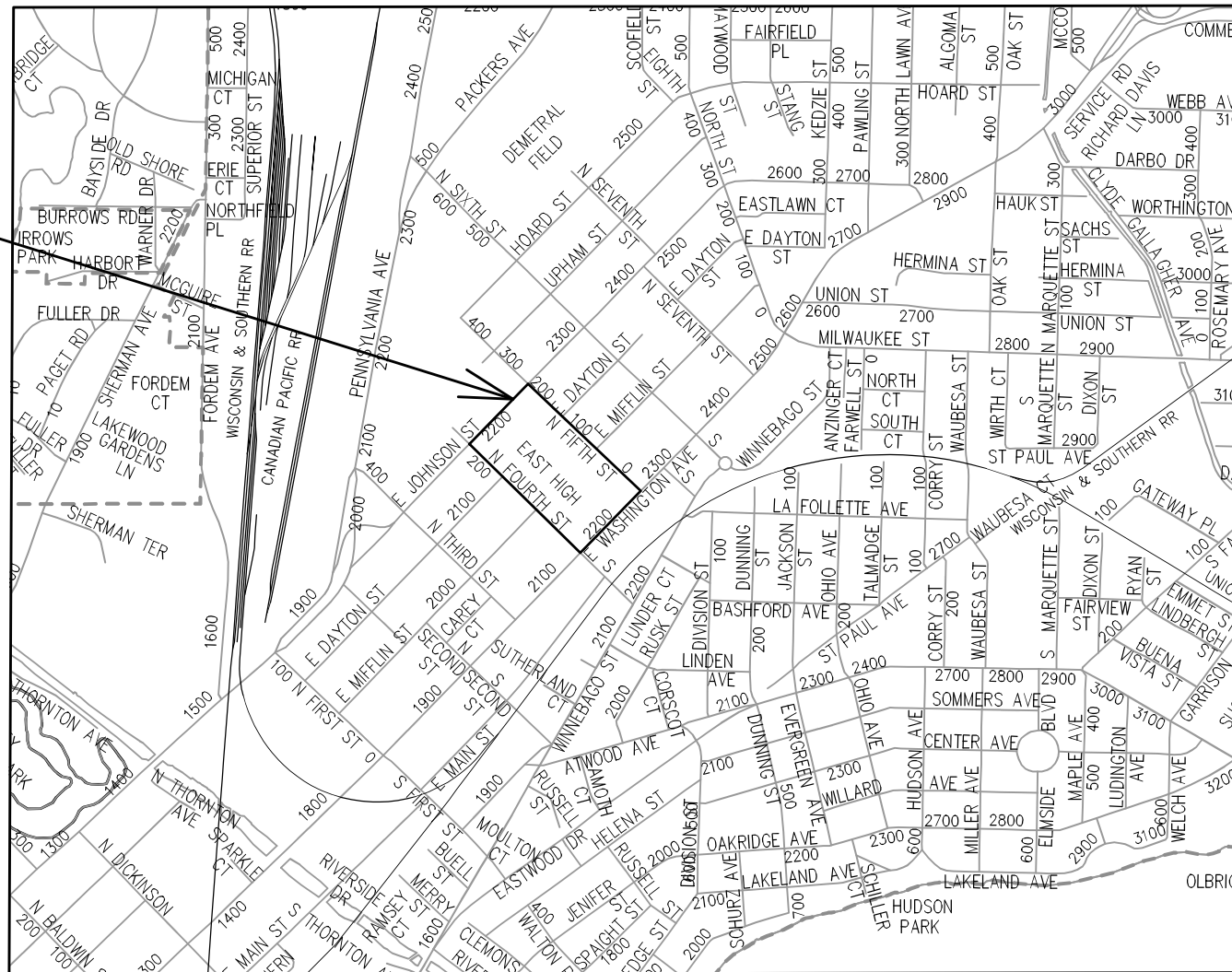
CITY PROJECT NO. 13892
CONTRACT NO. 9116

INDEX OF SHEETS

SHEET NO. D1	NOTES AND DETAILS
SHEET NO. P1	STREET PLAN & PROFILES
SHEET NO. U1	UTILITY PLAN & PROFILES
NO MAINTENANCE PLAN	

REVISED 3/9/23

PROJECT LOCATION



PUBLIC IMPROVEMENT PROJECT
APPROVED

JANUARY 4, 2022

BY THE COMMON COUNCIL
OF MADISON, WISCONSIN

PUBLIC IMPROVEMENT DESIGN
APPROVED BY:

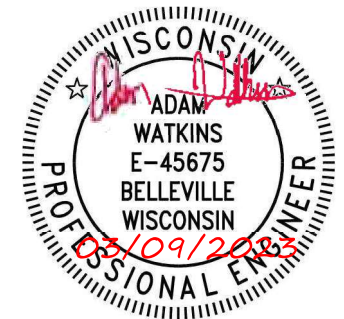
Greg Fries

Jul 15, 2022

City Engineer

Date

STREET GRADES
DESIGNED BY:



STORM SEWER
DESIGNED BY:

LATERAL
ONLY

SANITARY SEWER
DESIGNED BY:

LATERAL
ONLY

WATER
DESIGNED BY:

LATERAL
ONLY

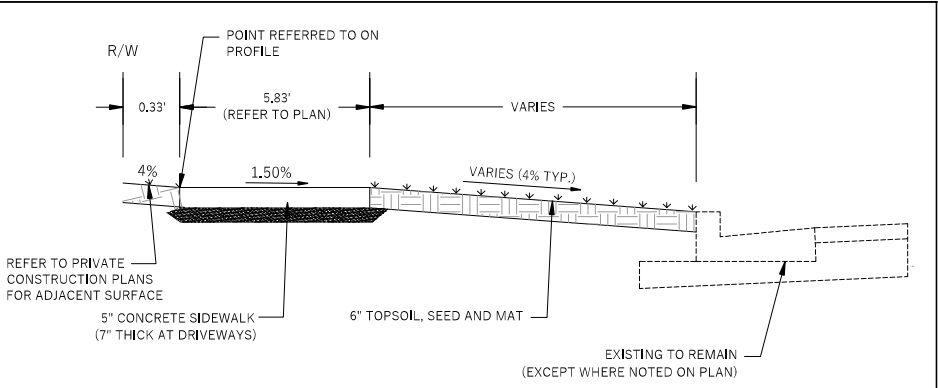
PLOT SCALE: 1"=X'REF

PLOT NAME: ---

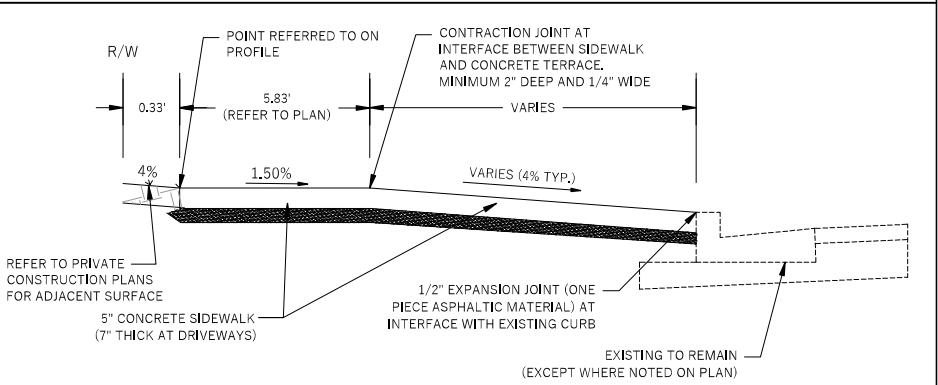
REV. DATE: 1/19/2022 11:38 AM

ORIGINATOR: CITY_OF_MADISON

File: W:\2020\200696_MMSD - Planned Referendum Projects\dwg\Est\200696_Madison_East_Public_Plan.dwg Layout: D-1 User: Adm Plot: Jul 06, 2022 - 2:22pm



NORTH FOURTH STREET TYPICAL SIDEWALK SECTION



NORTH FOURTH STREET TYPICAL SIDEWALK SECTION
(STA 10+64.83-10+96.51, STA 11+96.17-12+81.67)

General:

THE DEVELOPER SHALL REPLACE ALL CURB & GUTTER AND SIDEWALK THAT IS DAMAGED OR DETERMINED TO BE IN UNSATISFACTORY CONDITION, REGARDLESS OF WHETHER THE DAMAGE EXISTED PRIOR TO CONSTRUCTION.

PAVEMENT SAWCUTS AND FINAL PAVEMENT PATCHING LIMITS SHALL BE AS DIRECTED BY THE CITY CONSTRUCTION ENGINEER. SAWCUTS AND LIMITS SHOWN ON THE PLAN ARE BASED ON ANTICIPATED DISTURBANCE AND THE PATCHING CRITERIA BUT SHALL BE CONSIDERED APPROXIMATE. ALL PAVEMENT PATCHING SHALL BE PER THE CITY'S PATCHING CRITERIA.

ANY INFORMATION SHOWN ON THIS PLAN, WHICH IS NOT PART OF THIS RIGHT-OF-WAY PROJECT, IS PRELIMINARY AND NOT FOR CONSTRUCTION.

OBTAIN A PRINT OUT OF THE ALIGNMENT FROM THE CITY ENGINEER PRIOR TO STAKING THIS PROJECT.

THE CONTRACTOR SHALL SUBMIT A TRAFFIC CONTROL PLAN FOR REVIEW TO THE CITY TRAFFIC ENGINEERING DIVISION AT LEAST 10 WORKING DAYS PRIOR TO WORK BEGINNING. THE TRAFFIC CONTROL PLAN SHALL COMPLY WITH ALL MUTCD REQUIREMENTS. WORK SHALL NOT PROCEED UNTIL THE TRAFFIC CONTROL PLAN HAS BEEN APPROVED. THE TRAFFIC CONTROL PLAN MAY INCLUDE BUT IS NOT LIMITED TO: LANE CLOSURE RESTRICTIONS, PEAK HOUR WORKING RESTRICTIONS, ACCESS REQUIREMENTS, ETC. THE CONTRACTOR SHALL BE RESPONSIBLE FOR PHASING WORK AS NECESSARY TO MEET THE REQUIREMENTS OF THE APPROVED TRAFFIC CONTROL PLAN.

Street Design:

ALL DISTURBED TERRACE AREAS SHALL BE RESTORED WITH 6-INCHES OF TOP SOIL AND SEED UNLESS DIRECTED OTHERWISE ON THE PLAN OR BY THE CITY CONSTRUCTION ENGINEER.

TYPICAL PAVEMENT CROSS SLOPES SHALL BE 2% AND TERRACES SHALL SLOPE AT A 4% GRADE TOWARD THE GUTTER.

THE CROSS SLOPE OF SIDEWALKS AND BARRIER FREE SIDEWALK CURB RAMPS SHALL BE 1.5%. THE LONGITUDINAL GRADE OF BARRIER FREE SIDEWALK CURB RAMPS SHALL NOT EXCEED 8.33%. ALL SIDEWALK RAMPS SHALL BE CONSTRUCTED ACCORDING TO S.D.D. 3.03. AT ALL OTHER LOCATIONS THE LONGITUDINAL GRADE OF SIDEWALKS SHALL NOT EXCEED 5.0% OR THE ADJACENT STREET GRADE WHICHEVER IS GREATER NOR BE LESS THAN 0.5% AND SHALL DRAIN TOWARD STORM SEWER INLETS. CONCRETE TERRACE SHALL BE INSTALLED BETWEEN THE SIDEWALK AND THE BACK OF CURB AT SIDEWALK LOW POINTS WHICH CANNOT OTHERWISE BE DRAINED DIRECTLY TO THE GUTTER. SIDE SLOPES WITHIN TEN FEET OF A PUBLIC SIDEWALK SHALL NOT EXCEED 4:00:1. ALL SIDEWALK AND SIDEWALK RAMP ELEVATIONS AND GRADES SHALL BE FIELD VERIFIED AND SET TO COMPLY WITH THE CITY OF MADISON STANDARD SPECIFICATIONS AND THE A.D.A. GUIDELINES. CURB STATION AND OFFSETS SHALL BE TO THE EDGE OF PAVEMENT UNLESS OTHERWISE INDICATED. CURB ELEVATIONS SHALL BE TO THE EDGE OF PAVEMENT UNLESS OTHERWISE INDICATED.

Utilities:

POWER POLES AND OTHER OBSTRUCTIONS SHALL BE MOVED TO PROVIDE 2 FEET MINIMUM OF CLEAR DISTANCE FROM ANY FACE OF CURB OR EDGE OF SIDEWALK.

THERE MAY BE EXISTING UTILITIES OR OTHER FEATURES WHICH ARE EITHER NOT SHOWN OR SHOWN INCORRECTLY ON THIS PLAN. IT IS THE RESPONSIBILITY OF THE DEVELOPER TO LOCATE AND IDENTIFY ALL UTILITIES AND TOPOGRAPHY WHICH MAY AFFECT THE CONSTRUCTION OF THESE IMPROVEMENTS.

RELOCATION OR ADJUSTING OF PRIVATE UTILITY FACILITIES, SUCH AS POLES, PEDESTALS, BOXES, STRUCTURES, CASTINGS OR HANDHOLES, WITH PRIVATE UTILITY COMPANIES.

Forestry:

ALL PROPOSED STREET TREE REMOVALS WITHIN THE RIGHT OF WAY SHALL BE REVIEWED BY CITY FORESTRY BEFORE THE PLAN COMMISSION MEETING. STREET TREE REMOVALS REQUIRE APPROVAL AND A TREE REMOVAL PERMIT ISSUED BY CITY FORESTRY. ANY STREET TREE REMOVALS REQUESTED AFTER THE DEVELOPMENT PLAN IS APPROVED BY THE PLAN COMMISSION OR THE BOARD OF PUBLIC WORKS AND CITY FORESTRY WILL REQUIRE A MINIMUM OF A 72-HOUR REVIEW PERIOD WHICH SHALL INCLUDE THE NOTIFICATION OF THE ALDERPERSON WITHIN WHO'S DISTRICT IS AFFECTED BY THE STREET TREE REMOVAL(S) PRIOR TO A TREE REMOVAL PERMIT BEING ISSUED.

AS DEFINED BY THE SECTION 107.13 OF CITY OF MADISON STANDARD SPECIFICATIONS FOR PUBLIC WORKS CONSTRUCTION: NO EXCAVATION IS PERMITTED WITHIN 5 FEET OF THE TRUNK OF THE STREET TREE OR WHEN CUTTING ROOTS OVER 3 INCHES IN DIAMETER. IF EXCAVATION IS NECESSARY, THE CONTRACTOR SHALL CONTACT MADISON CITY FORESTRY (266-4816) PRIOR TO EXCAVATION. CITY OF MADISON FORESTRY PERSONNEL SHALL ASSESS THE IMPACT TO THE TREE AND TO ITS ROOT SYSTEM PRIOR TO WORK COMMENCING. TREE PROTECTION SPECIFICATIONS CAN BE FOUND ON THE FOLLOWING WEBSITE:
[HTTPS://WWW.CITYOFMADISON.COM/BUSINESS/PW/SPECS.CFM](https://www.cityofmadison.com/business/pw/specs.cfm)

CONTRACTOR SHALL TAKE PRECAUTIONS DURING CONSTRUCTION TO NOT DISFIGURE, SCAR, OR IMPAIR THE HEALTH OF ANY STREET TREE. CONTRACTOR SHALL OPERATE EQUIPMENT IN A MANNER AS TO NOT DAMAGE THE BRANCHES OF THE STREET TREE(S). THIS MAY REQUIRE USING SMALLER EQUIPMENT AND LOADING AND UNLOADING MATERIALS IN A DESIGNATED SPACE AWAY FROM TREES ON THE CONSTRUCTION SITE. ANY DAMAGE OR INJURY TO EXISTING STREET TREES (EITHER ABOVE OR BELOW GROUND) SHALL BE REPORTED IMMEDIATELY TO CITY FORESTRY AT 266-4816. PENALTIES AND REMEDIATION SHALL BE REQUIRED.

SECTION 107.13(G) OF CITY OF MADISON STANDARD SPECIFICATIONS FOR PUBLIC WORKS CONSTRUCTION ADDRESSES SOIL COMPACTION NEAR STREET TREES AND SHALL BE FOLLOWED BY CONTRACTOR. THE STORAGE OF PARKED VEHICLES, CONSTRUCTION EQUIPMENT, BUILDING MATERIALS, REFUSE, EXCAVATED SPOILS OR DUMPING OF POISONOUS MATERIALS ON OR AROUND TREES AND ROOTS WITHIN FIVE (5) FEET OF THE TREE OR WITHIN THE PROTECTION ZONE IS PROHIBITED.

ON THIS PROJECT, STREET TREE PROTECTION ZONE FENCING IS REQUIRED. THE FENCING SHALL BE ERECTED BEFORE THE DEMOLITION, GRADING OR CONSTRUCTION BEGINS. THE FENCE SHALL INCLUDE THE ENTIRE WIDTH OF TERRACE AND, EXTEND AT LEAST 5 FEET ON BOTH SIDES OF THE OUTSIDE EDGE OF THE TREE TRUNK. DO NOT REMOVE THE FENCING TO ALLOW FOR DELIVERIES OR EQUIPMENT ACCESS THROUGH THE TREE PROTECTION ZONE.

STREET TREE PRUNING SHALL BE COORDINATED WITH MADISON FORESTRY AT A MINIMUM OF TWO WEEKS PRIOR TO THE START OF CONSTRUCTION FOR THIS PROJECT. ALL PRUNING SHALL FOLLOW THE AMERICAN NATIONAL STANDARDS INSTITUTE (ANSI) A300 - PART 1 STANDARDS FOR PRUNING.

CONTRACTOR SHALL CONTACT CITY FORESTRY AT (608) 266-4816 TO SCHEDULE INSPECTION AND APPROVAL OF NURSERY TREE STOCK AND REVIEW PLANTING SPECIFICATIONS WITH THE LANDSCAPER AT LEAST ONE WEEK PRIOR TO STREET TREE PLANTING.

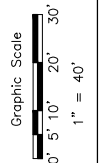
CONTRACTOR SHALL CONTACT CITY FORESTRY AT 266-4816 AT LEAST ONE WEEK PRIOR TO PLANTING AND ALSO PRIOR TO INSTALLATION OF TREE GRATES. TREE GRATES WILL REQUIRE EXCAVATION TO CONFIRM THAT THERE ARE NO CONFLICTS THAT WOULD PREVENT TREE PLANTINGS. NOTICE PRIOR TO OTHER PLANTINGS IS NECESSARY TO SCHEDULE INSPECTION OF THE NURSERY STOCK AND REVIEW PLANTING SPECIFICATIONS WITH THE LANDSCAPER.

CALL CITY FORESTRY 608-266-4816 BEFORE EXCAVATION FOR SIDEWALK INSTALLATION.

Sheet Title:

STANDARD NOTES AND TYPICAL SECTIONS
CITY OF MADISON PROJECT NO. 13892 CONTRACT NO. 9116

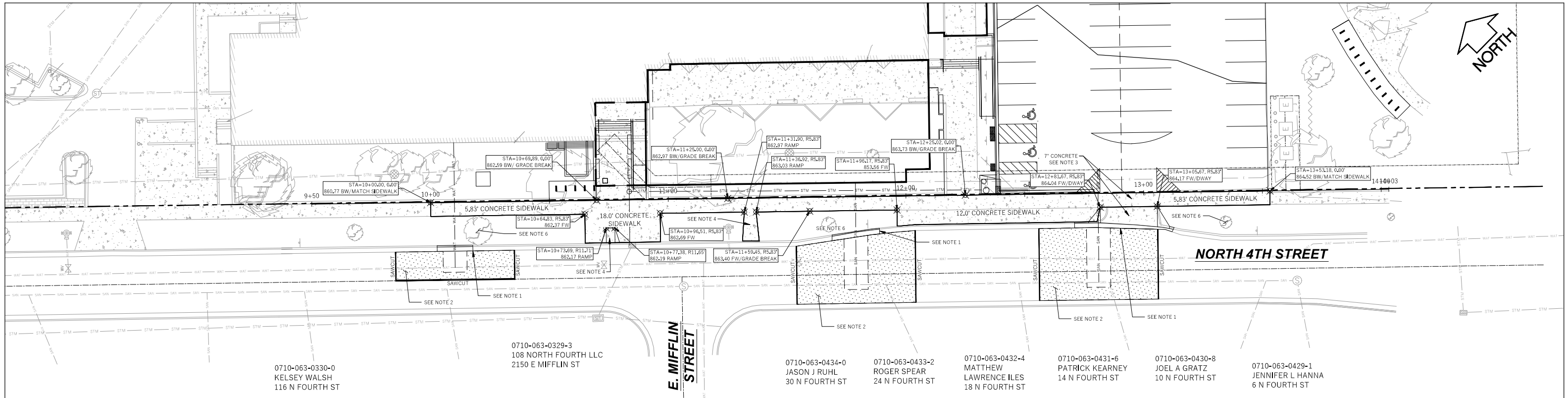
NORTH FOURTH STREET
MADISON, WI 53704



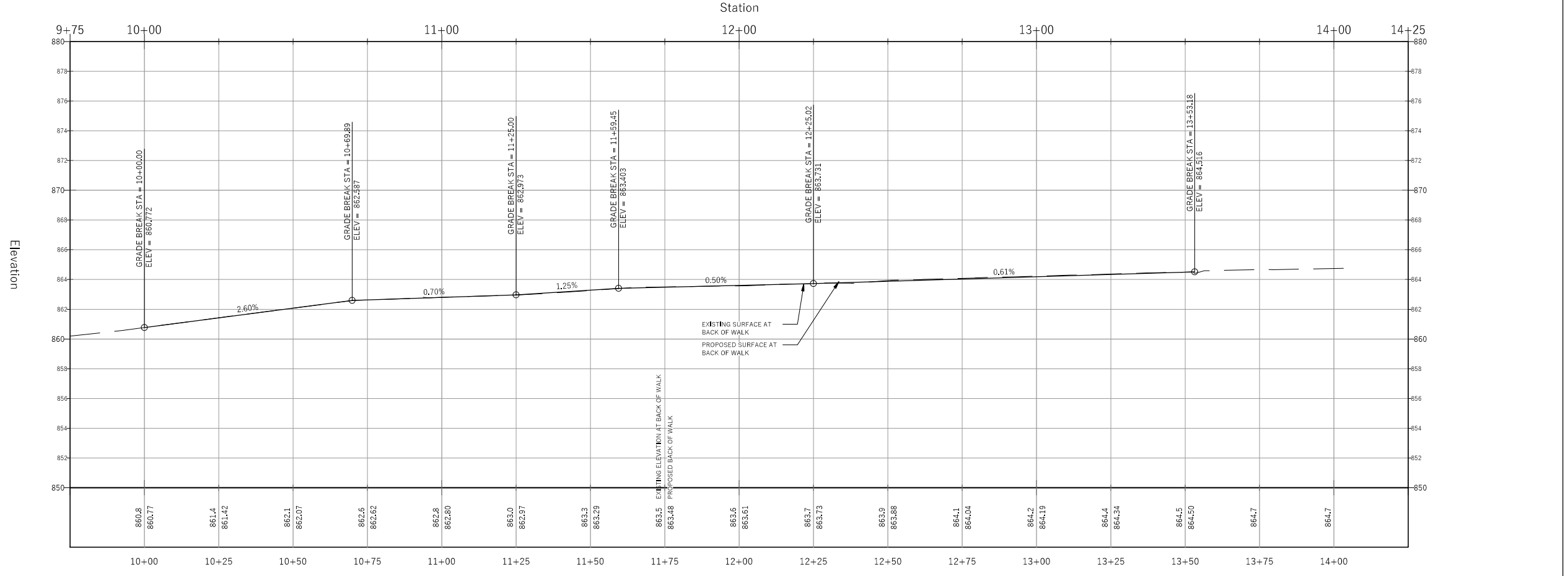
No.	Date	Description

Wyser Number	20-0696
Set Type	CONSTRUCTION DOCUMENTS
Date Issued	01/11/2022
Sheet Number	D-1

2222 E. WASHINGTON AVENUE
MADISON EAST HIGH SCHOOL IMPROVEMENTS
CITY OF MADISON, DANE COUNTY, WI



- NOTES:
1. REPLACE CURB AND GUTTER, POTENTIAL 2" MILL AND OVERLAY, TAKE CARE TO NOT DAMAGE PAVEMENT EDGE TO AVOID MILL AND OVERLAY, FINAL LIMITS TO BE DETERMINED BY CONSTRUCTION ENGINEER.
 2. 2" MILL AND OVERLAY ONLY, OR AS DIRECTED BY THE CONSTRUCTION ENGINEER, IN HATCHED AREA.
 3. REFER TO CITY OF MADISON STANDARD DETAIL DRAWING 3.02 - "MADISON STANDARD CURB CUT DETAILS."
 4. REFER TO CITY OF MADISON STANDARD DETAIL DRAWING 3.03 - "STANDARD CURB RAMPS 1 AND 2" & 3.04 - "CURB RAMPS GENERAL AND CURB RAMP 2-A."
 5. CONTRACTOR SHALL CONTACT CITY FORESTRY AT 608-266-4816 BEFORE EXCAVATION FOR SIDEWALK INSTALLATION.
 6. CONTRACTOR SHALL TAKE PRECAUTIONS DURING CONSTRUCTION TO NOT DISFIGURE, SCAR, OR IMPAIR THE HEALTH OF ANY STREET TREE. CONTRACTOR SHALL OPERATE EQUIPMENT IN A MANNER AS TO NOT DAMAGE THE BRANCHES OF THE STREET TREE(S). THIS MAY REQUIRE USING SMALLER EQUIPMENT AND LOADING AND UNLOADING MATERIALS IN A DESIGNATED SPACE AWAY FROM TREES ON THE CONSTRUCTION SITE. ANY DAMAGE OR INJURY TO EXISTING STREET TREES (EITHER ABOVE OR BELOW GROUND) SHALL BE REPORTED IMMEDIATELY TO CITY FORESTRY AT 608-266-4816. PENALTIES AND REMEDIATION SHALL BE REQUIRED. SECTION 107.13(G) OF CITY OF MADISON STANDARD SPECIFICATIONS FOR PUBLIC WORKS CONSTRUCTION ADDRESSES SOIL COMPACTION NEAR STREET TREES AND SHALL BE FOLLOWED BY CONTRACTOR. THE STORAGE OF PARKED VEHICLES, CONSTRUCTION EQUIPMENT, BUILDING MATERIALS, REFUSE, EXCAVATED SPOILS OR DUMPING OF POISONOUS MATERIALS ON OR AROUND TREES AND ROOTS WITHIN FIVE (5) FEET OF THE TREE OR WITHIN THE PROTECTION ZONE IS PROHIBITED.



2222 E. WASHINGTON AVENUE
MADISON EAST HIGH SCHOOL IMPROVEMENTS
CITY OF MADISON, DANE COUNTY, WI

Sheet Title:
PLAN AND PROFILE
NORTH FOURTH STREET SIDEWALK
CITY OF MADISON PROJECT NO. 13892 CONTRACT NO. 9116

NORTH FOURTH STREET
MADISON, WI 53704

DIGGERS HOTLINE
Toll Free (800) 242-8511 or-811
Hearing Impaired TDD (800) 542-2289
www.DiggersHotline.com

Graphic Scale	0' 5' 10' 20' 30'	
1" = 40'		
Revisions:		
No.	Date:	Description:
	07/09/23	Sanitary Revisions

Wyser Number	20-0696
Set Type	CONSTRUCTION DOCUMENTS
Date Issued	01/11/2022
Sheet Number	P-1

File: W:\2020\200696_MMSD - Planned Referendum Projects\dwg\Est\200696_Madison_East_Public_Plan.dwg Layout: P-1 User: Adam Plotter: Mar_09_2023 - 12:08pm

