

Madison, Wisconsin

# CITY OF MADISON

## CITY ENGINEERING DIVISION

### DEPARTMENT OF PUBLIC WORKS

# PLAN OF PROPOSED IMPROVEMENT

#### INDEX OF SHEETS

SHEET NO. D1-D2	NOTES AND DETAILS
SHEET NO. P1-P2	STREET PLAN & PROFILES
SHEET NO. U1	UTILITY PLAN & PROFILE
SHEET NO. U2	STORM SEWER SCHEDULE
SHEET NO. U3	GANSER WAY UTILITY PLAN

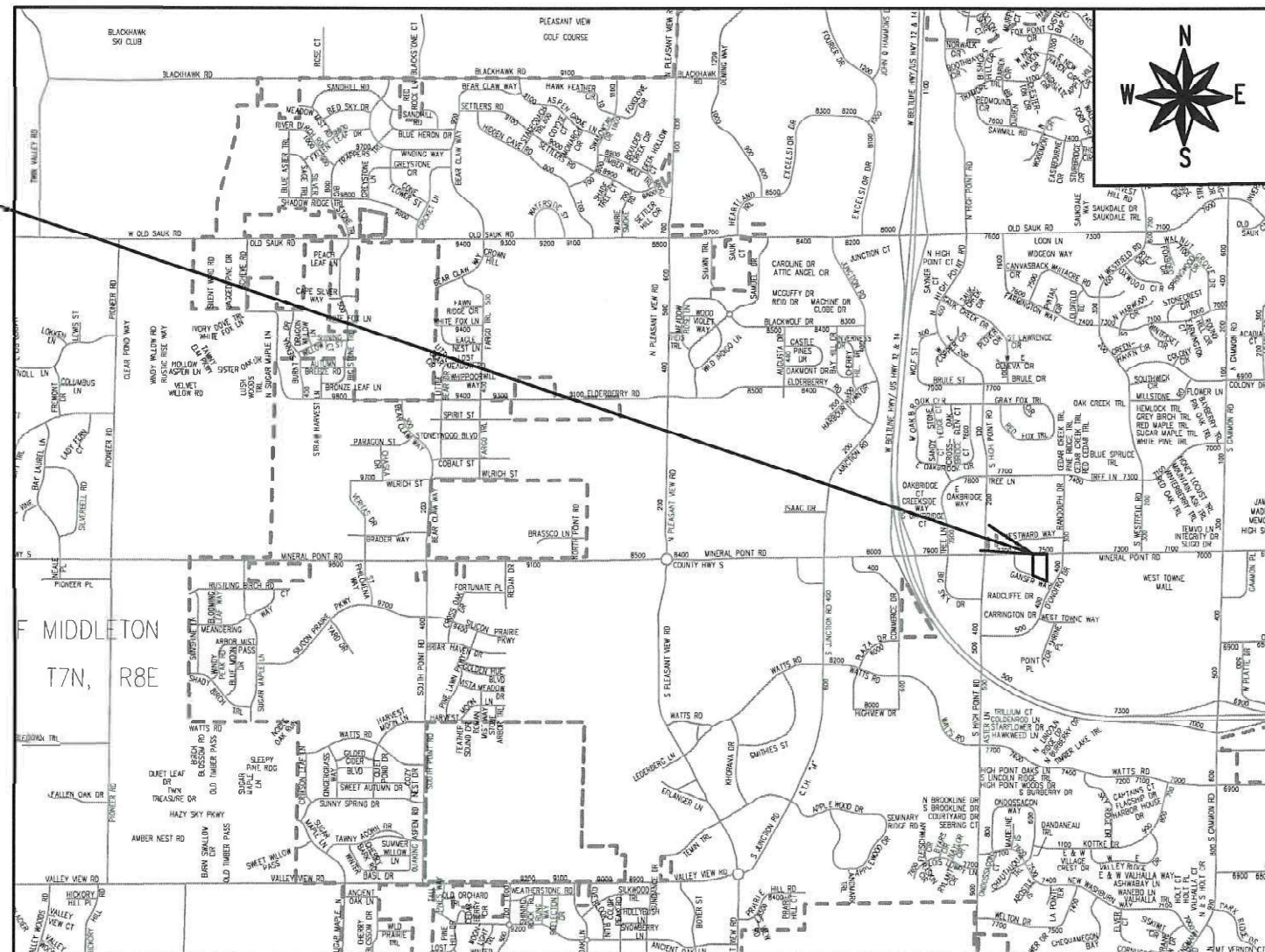
NO MAINTENANCE PLAN

**REVISION HISTORY**  
 6/1/22 - D1 UPDATED, U3 ADDED  
 7/26/23- P1 & P2 UPDATED

## 7603 MINERAL POINT ROAD

CITY PROJECT NO. 13894  
CONTRACT NO. 9117

### PROJECT LOCATION



PUBLIC IMPROVEMENT PROJECT APPROVED

DECEMBER 7, 2021

BY THE COMMON COUNCIL OF MADISON, WISCONSIN

PUBLIC IMPROVEMENT DESIGN APPROVED BY:

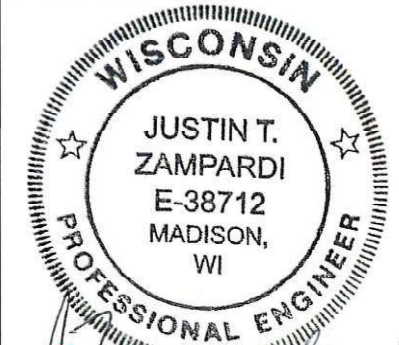
*Greg Fries*

Apr 14, 2022

City Engineer

Date

STREET DESIGNED BY:



STORM SEWER DESIGNED BY:



PLOT SCALE: 1:1 XREF

PLOT NAME: —

REV. DATE: 4/1/2022 9:35 AM

ORIGINATOR: CITY\_OF\_MADISON

UTILITY NOTES:

- 1. THERE MAY BE EXISTING UTILITIES OR OTHER FEATURES WHICH ARE EITHER NOT SHOWN OR SHOWN INCORRECTLY ON THIS PLAN. IT IS THE RESPONSIBILITY OF THE DEVELOPER TO LOCATE AND IDENTIFY ALL UTILITIES AND TOPOGRAPHY WHICH MAY AFFECT THE CONSTRUCTION OF THESE IMPROVEMENTS.
2. COORDINATE RELOCATION OR ADJUSTING OF PRIVATE UTILITY FACILITIES, SUCH AS POLES, PEDESTALS, BOXES, STRUCTURES, CASTINGS OR HANDHOLES, WITH PRIVATE UTILITY COMPANIES.
3. STORM SEWER LENGTHS SHOWN ARE FROM CENTER OF STRUCTURE TO CENTER OF STRUCTURE. STORM SEWER END SECTIONS ARE INCLUDED IN THE LENGTH AND SLOPE OF THE PIPE.
4. CONTRACTOR SHALL INVESTIGATE ALL UTILITY CROSSINGS PRIOR TO CONSTRUCTION AND NOTIFY ENGINEER OF ANY CONFLICTS.
5. CONTRACTOR SHALL BE RESPONSIBLE FOR ADJUSTING ALL UTILITY STRUCTURES (MANHOLE RIMS, WATER VALVES, AND CURB STOPS), IF NECESSARY.
6. CONTRACTOR SHALL OBTAIN ANY NECESSARY WORK IN RIGHT-OF WAY, EXCAVATION, UTILITY CONNECTION, PLUGGING, ABANDONMENT, AND DRIVEWAY CONNECTION PERMITS PRIOR TO CONSTRUCTION.
7. FOR ALL SEWER AND WATER MAIN CROSSINGS: PROVIDE MINIMUM 18" SEPARATION WHEN WATER MAIN CROSSES BELOW SEWER AND MINIMUM 6" SEPARATION WHEN WATER MAIN CROSSES ABOVE SEWER.
8. IF DEWATERING OPERATIONS EXCEED 70 GALLONS PER MINUTE OF PUMPING CAPACITY, A DEWATERING WELL PERMIT SHALL BE OBTAINED FROM THE DEPARTMENT PRIOR TO STARTING ANY DEWATERING ACTIVITIES.
9. A COPY OF THE APPROVED UTILITY PLANS, SPECIFICATIONS AND PLUMBING PERMIT APPROVAL LETTER SHALL BE ON-SITE DURING CONSTRUCTION AND OPEN TO INSPECTION BY AUTHORIZED REPRESENTATIVES OF THE DEPARTMENT OF SAFETY AND PROFESSIONAL SERVICES AND OTHER LOCAL INSPECTORS.
10. ALL STORM SEWER SHALL BE CONSTRUCTED IN ACCORDANCE WITH THE CITY OF MADISON STANDARD SPECIFICATIONS FOR PUBLIC WORKS CONSTRUCTION.
11. NO PERSON MAY ENGAGE IN PLUMBING WORK IN THE STATE UNLESS LICENSED TO DO SO BY THE DEPARTMENT OF SAFETY AND PROFESSIONAL SERVICES PER S.145.06.
12. CONTRACTOR SHALL FIELD VERIFY THE SIZE, TYPE, LOCATION, AND ELEVATION OF EXISTING UTILITIES PRIOR TO INSTALLING ANY ON-SITE UTILITIES OR STRUCTURES. CONTACT ENGINEER PRIOR TO INSTALLATION IF DISCREPANCY EXISTS WITHIN THESE PLANS.
13. CONTRACTOR SHALL BE RESPONSIBLE FOR COORDINATING THE RELOCATION OF ANY UTILITIES ENCOUNTERED AND REPLACEMENT OF ANY UTILITIES DAMAGED WITHIN INFLUENCE ZONE OF NEW CONSTRUCTION. CONTACT ENGINEER IF THE EXISTING UTILITIES VARY APPRECIABLY FROM THE PLANS.
14. CLEAN OUT ALL EXISTING AND PROPOSED STORM INLETS AND CATCH BASINS AT THE COMPLETION OF CONSTRUCTION.
15. PRIVATE SANITARY SEWER AND LATERALS SHALL BE POLYVINYL CHLORIDE (PVC) ASTM D3034 - SDR 35 OR APPROVED EQUAL MATERIAL THAT CONFORMS TO ONE OF THE STANDARDS LISTED IN TABLE 384.30-3 OF SPS 384.30(2)(C).
16. A MEANS TO LOCATE BURIED UNDERGROUND EXTERIOR NON METALLIC SEWERS/MAINS AND WATER SERVICES/MAINS MUST BE PROVIDED WITH TRACER WIRE OR OTHER METHODS IN ORDER TO BE LOCATED PER SPS 382.10(11)(H) AND SPS 382.40(8)(K).
17. SITE CONTRACTOR SHALL LEAVE SANITARY AND WATER LATERALS FIVE (5) FEET SHORT (HORIZONTALLY) FROM THE BUILDING. BUILDING PLUMBER SHALL VERIFY SIZE, LOCATION, AND INVERT ELEVATION OF PROPOSED SANITARY AND WATER LATERALS.

RIGHT-OF-WAY WORK:

- 1. ALL PUBLIC IMPROVEMENTS OR RESTORATION WITHIN THE PUBLIC RIGHT-OF-WAY SHALL BE COMPLETED PER THE PLANS APPROVED AND ISSUED BY THE CITY ENGINEERING (CONTRACT 9117, CITY PROJECT 13894)
2. THE RIGHT-OF-WAY IS THE SOLE JURISDICTION OF THE CITY OF MADISON AND IS SUBJECT TO CHANGE AT ANYTIME PER THE RECOMMENDATION/PLAN OF TRAFFIC ENGINEERING AND CITY ENGINEERING DEPTS.

FORESTRY NOTES:

- 1. ALL PROPOSED STREET TREE REMOVALS WITHIN THE RIGHT OF WAY SHALL BE REVIEWED BY CITY FORESTRY BEFORE THE PLAN COMMISSION MEETING. STREET TREE REMOVALS REQUIRE APPROVAL AND A TREE REMOVAL PERMIT ISSUED BY CITY FORESTRY. ANY STREET TREE REMOVALS REQUESTED AFTER THE DEVELOPMENT PLAN IS APPROVED BY THE PLAN COMMISSION OR THE BOARD OF PUBLIC WORKS AND CITY FORESTRY WILL REQUIRE A MINIMUM OF A 72-HOUR REVIEW PERIOD WHICH SHALL INCLUDE THE NOTIFICATION OF THE ALDERPERSON WITHIN WHO'S DISTRICT IS AFFECTED BY THE STREET TREE REMOVAL(S) PRIOR TO A TREE REMOVAL PERMIT BEING ISSUED.
2. AS DEFINED BY THE SECTION 107.13 OF CITY OF MADISON STANDARD SPECIFICATIONS FOR PUBLIC WORKS CONSTRUCTION: NO EXCAVATION IS PERMITTED WITHIN 5 FEET OF THE TRUNK OF THE STREET TREE OR WHEN CUTTING ROOTS OVER 3 INCHES IN DIAMETER. IF EXCAVATION IS NECESSARY, THE CONTRACTOR SHALL CONTACT MADISON CITY FORESTRY (266-4816) PRIOR TO EXCAVATION. CITY OF MADISON FORESTRY PERSONNEL SHALL ASSESS THE IMPACT TO THE TREE AND TO ITS ROOT SYSTEM PRIOR TO WORK COMMENCING. TREE PROTECTION SPECIFICATIONS CAN BE FOUND ON THE FOLLOWING WEBSITE: HTTPS://WWW.CITYOFMADISON.COM/BUSINESS/PW/SPECS.CFM
3. CONTRACTOR SHALL TAKE PRECAUTIONS DURING CONSTRUCTION TO NOT DISFIGURE, SCAR, OR IMPAIR THE HEALTH OF ANY STREET TREE. CONTRACTOR SHALL OPERATE EQUIPMENT IN A MANNER AS TO NOT DAMAGE THE BRANCHES OF THE STREET TREE(S). THIS MAY REQUIRE USING SMALLER EQUIPMENT AND LOADING AND UNLOADING MATERIALS IN A DESIGNATED SPACE AWAY FROM TREES ON THE CONSTRUCTION SITE. ANY DAMAGE OR INJURY TO EXISTING STREET TREES (EITHER ABOVE OR BELOW GROUND) SHALL BE REPORTED IMMEDIATELY TO CITY FORESTRY AT 266-4816. PENALTIES AND REMEDIATION SHALL BE REQUIRED.
4. SECTION 107.13(G) OF CITY OF MADISON STANDARD SPECIFICATIONS FOR PUBLIC WORKS CONSTRUCTION ADDRESSES SOIL COMPACTION NEAR STREET TREES AND SHALL BE FOLLOWED BY CONTRACTOR. THE STORAGE OF PARKED VEHICLES, CONSTRUCTION EQUIPMENT, BUILDING MATERIALS, REFUSE, EXCAVATED SPOILS OR DUMPING OF POISONOUS MATERIALS ON OR AROUND TREES AND ROOTS WITHIN FIVE (5) FEET OF THE TREE OR WITHIN THE PROTECTION ZONE IS PROHIBITED.
5. ON THIS PROJECT, STREET TREE PROTECTION ZONE FENCING IS REQUIRED. THE FENCING SHALL BE ERECTED BEFORE THE DEMOLITION, GRADING OR CONSTRUCTION BEGINS. THE FENCE SHALL INCLUDE THE ENTIRE WIDTH OF TERRACE AND, EXTEND AT LEAST 5 FEET ON BOTH SIDES OF THE OUTSIDE EDGE OF THE TREE TRUNK. DO NOT REMOVE THE FENCING TO ALLOW FOR DELIVERIES OR EQUIPMENT ACCESS THROUGH THE TREE PROTECTION ZONE.
6. STREET TREE PRUNING SHALL BE COORDINATED WITH MADISON FORESTRY AT A MINIMUM OF TWO WEEKS PRIOR TO THE START OF CONSTRUCTION FOR THIS PROJECT. ALL PRUNING SHALL FOLLOW THE AMERICAN NATIONAL STANDARDS INSTITUTE (ANSI) A300 - PART 1 STANDARDS FOR PRUNING.

GENERAL NOTES:

- 1. THE DEVELOPER SHALL REPLACE ALL CURB & GUTTER AND SIDEWALK THAT IS DAMAGED OR DETERMINED TO BE IN UNSATISFACTORY CONDITION, REGARDLESS OF WHETHER THE DAMAGE EXISTED PRIOR TO CONSTRUCTION.
2. PAVEMENT SAWCUTS AND FINAL PAVEMENT PATCHING LIMITS SHALL BE AS DIRECTED BY THE CITY CONSTRUCTION ENGINEER. SAWCUTS AND LIMITS SHOWN ON THE PLAN ARE BASED ON ANTICIPATED DISTURBANCE AND THE PATCHING CRITERIA BUT SHALL BE CONSIDERED APPROXIMATE. ALL PAVEMENT PATCHING SHALL BE PER THE CITY'S PATCHING CRITERIA.
3. ANY INFORMATION SHOWN ON THIS PLAN, WHICH IS NOT PART OF THIS RIGHT-OF-WAY PROJECT, IS PRELIMINARY AND NOT FOR CONSTRUCTION.
4. ALL WORK IN THE RIGHT OF WAY AND PUBLIC EASEMENTS SHALL BE IN ACCORDANCE WITH THE CITY OF MADISON STANDARD SPECIFICATIONS FOR PUBLIC WORKS CONSTRUCTION.

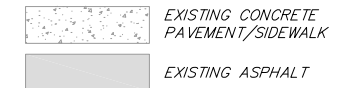
STREET DESIGN NOTES:

- 1. ALL DISTURBED TERRACE AREAS SHALL BE RESTORED WITH 6-INCHES OF TOP SOIL AND SEED UNLESS DIRECTED OTHERWISE ON THE PLAN OR BY THE CITY CONSTRUCTION ENGINEER.

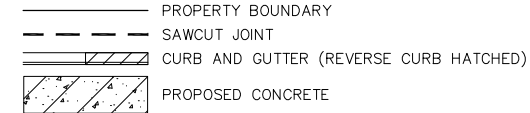
TRAFFIC CONTROL NOTES:

- 1. THE DEVELOPER SHALL PROVIDE, INSTALL AND MAINTAIN ALL STREET END BARRICADES, SIGNING AND TRAFFIC CONTROL, AS REQUIRED BY THE CITY TRAFFIC ENGINEER.
2. THE CONTRACTOR SHALL SUBMIT A TRAFFIC CONTROL PLAN FOR REVIEW TO THE CITY TRAFFIC ENGINEERING DIVISION AT LEAST 10 WORKING DAYS PRIOR TO WORK BEGINNING. THE TRAFFIC CONTROL PLAN SHALL COMPLY WITH ALL MUTCD REQUIREMENTS. WORK SHALL NOT PROCEED UNTIL THE TRAFFIC CONTROL PLAN HAS BEEN APPROVED. THE TRAFFIC CONTROL PLAN MAY INCLUDE BUT IS NOT LIMITED TO: LANE CLOSURE RESTRICTIONS, PEAK HOUR WORKING RESTRICTIONS, ACCESS REQUIREMENTS, ETC. THE CONTRACTOR SHALL BE RESPONSIBLE FOR PHASING WORK AS NECESSARY TO MEET THE REQUIREMENTS OF THE APPROVED TRAFFIC CONTROL PLAN.

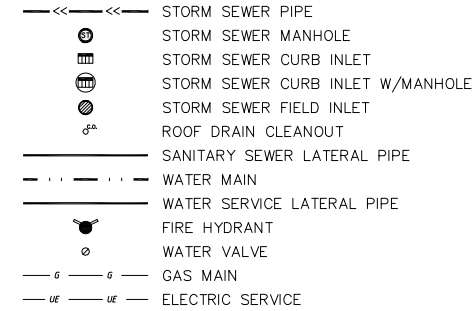
HATCHING LEGEND



SITE PLAN LEGEND



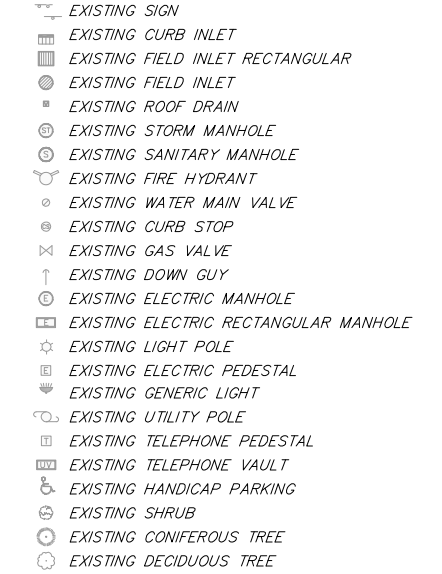
PROPOSED UTILITY LEGEND



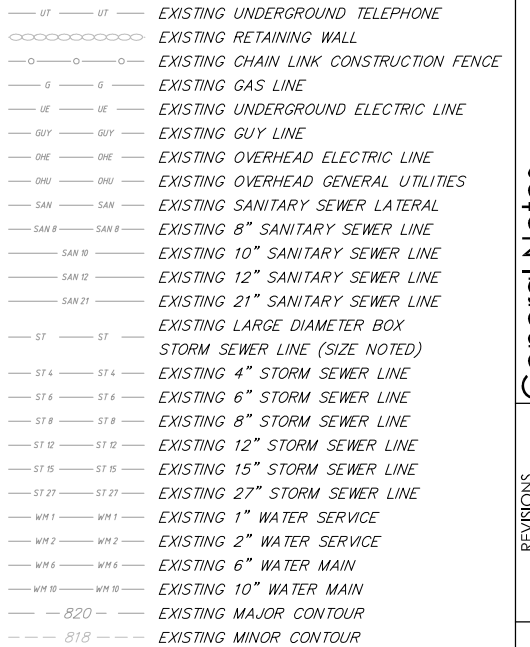
ABBREVIATIONS

Table with 2 columns: Abbreviation and Description. Includes STMH - Storm Manhole, FI - Field Inlet, CI - Curb Inlet, CB - Catch Basin, EW - Endwall, SMH - Sanitary Manhole.

SYMBOL LEGEND



LINWORK LEGEND



THE LOCATION OF EXISTING UTILITIES, BOTH UNDERGROUND AND OVERHEAD ARE APPROXIMATE ONLY AND HAVE NOT BEEN INDEPENDENTLY VERIFIED BY THE OWNER OR ITS REPRESENTATIVE. THE CONTRACTOR SHALL BE RESPONSIBLE FOR DETERMINING THE EXACT LOCATION OF ALL EXISTING UTILITIES WHETHER SHOWN ON THESE PLANS OR NOT, BEFORE COMMENCING WORK, AND SHALL BE FULLY RESPONSIBLE FOR ANY AND ALL DAMAGES WHICH MIGHT BE CAUSED BY THE CONTRACTOR'S FAILURE TO EXACTLY LOCATE AND PRESERVE ANY AND ALL UTILITIES.

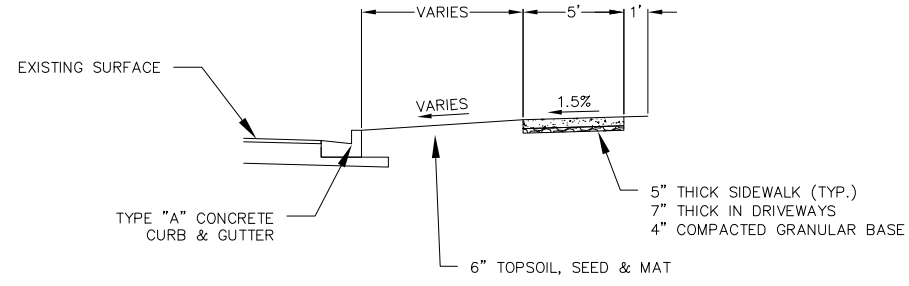
CALL DIGGER'S HOTLINE 1-800-242-8511



General Notes 7601 Mineral Point Road Madison Dane County, WI

Table with 4 columns: REVISIONS, NO., DATE, REMARKS. Includes revision #1 dated 05/23/22.

Table with 2 columns: SCALE AS SHOWN, DATE 03/31/2022, DRAFTER ZDRE, CHECKED JZAM, PROJECT NO. 200260.



1  
1 TYPICAL SECTION – GANSER WAY  
NOT TO SCALE



**vierbicher**  
planners | engineers | advisors  
Phone: (800) 261-3898

Typical Sections  
7601 Mineral Point Road  
Madison  
Dane County, WI

REVISIONS		REVISIONS	
NO.	DATE	NO.	DATE

REMARKS

SCALE  
AS SHOWN

DATE  
03/31/2022

DRAFTER  
ZDRE

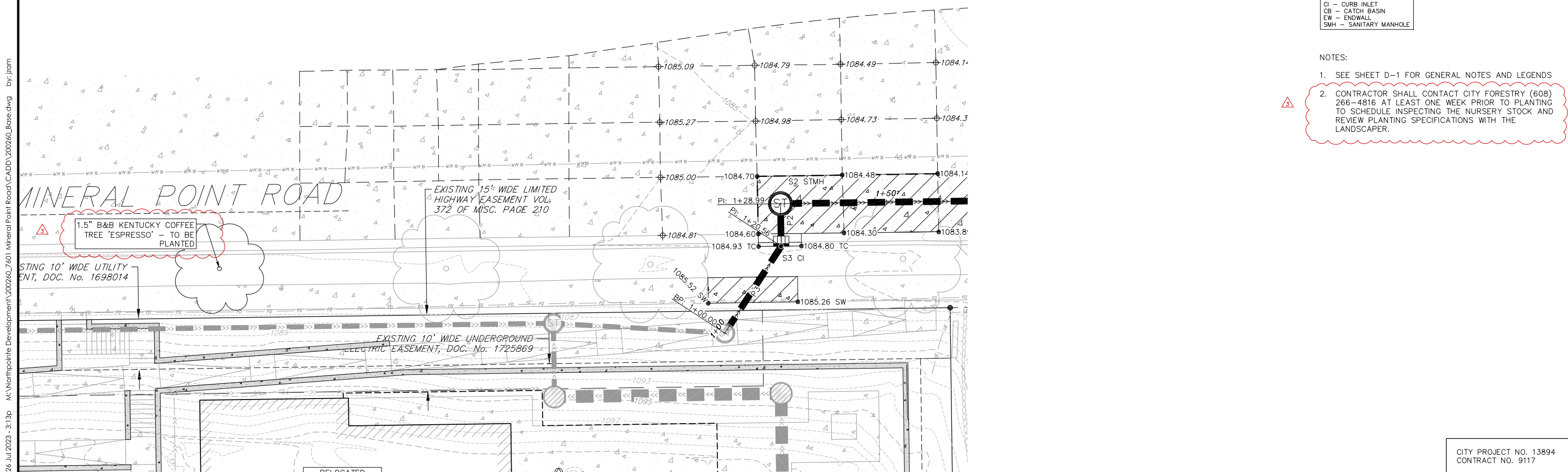
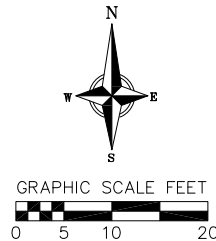
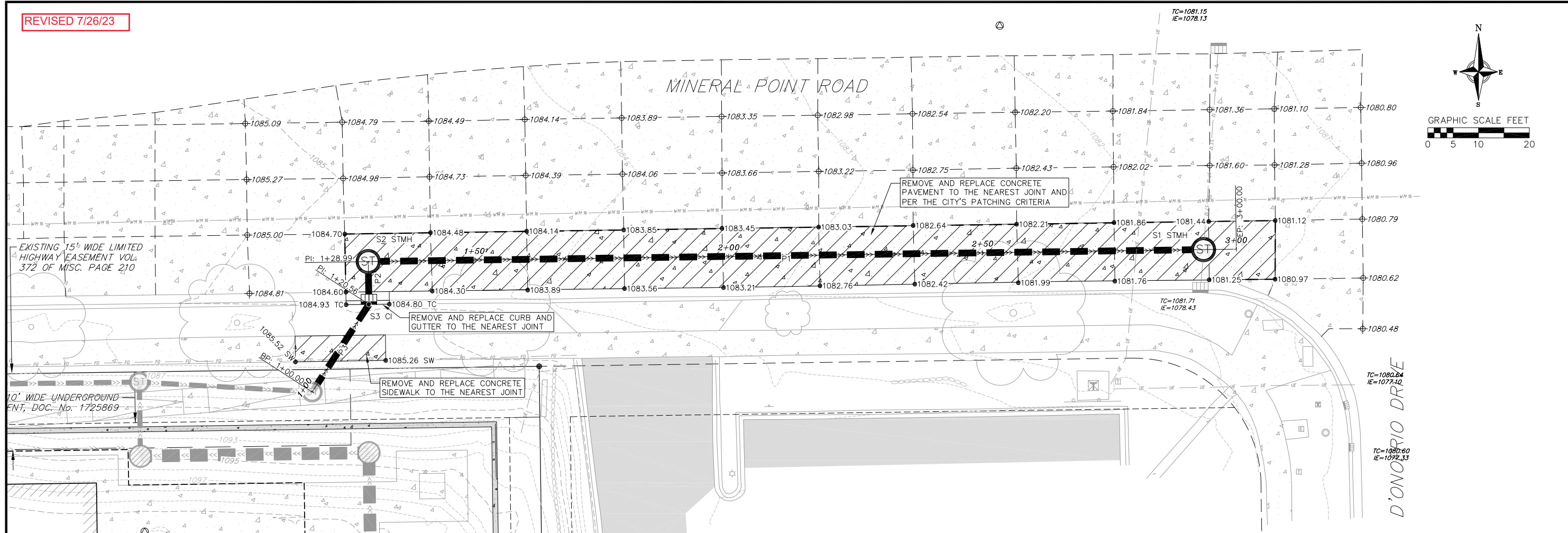
CHECKED  
JZAM

PROJECT NO.  
200260

CITY PROJECT NO. 13894  
CONTRACT NO. 9117

REVISED 7/26/23

©2018 Vierbicher Associates, Inc.



**ABBREVIATIONS**

STMH	—	STORM MANHOLE
FI	—	FIELD INLET
CI	—	CURB INLET
CB	—	CATCH BASIN
EW	—	ENDWALL
SMH	—	SANITARY MANHOLE

- NOTES:**
- SEE SHEET D-1 FOR GENERAL NOTES AND LEGENDS
  - CONTRACTOR SHALL CONTACT CITY FORESTRY (608) 266-4816 AT LEAST ONE WEEK PRIOR TO PLANTING TO SCHEDULE INSPECTING THE NURSERY STOCK AND REVIEW PLANTING SPECIFICATIONS WITH THE LANDSCAPER.

26 Jul 2023 - 3:13p M:\Northpointe Development\200260.7401 Mineral Point Road\CADD\200260\_Base.dwg by:jzam

**Mineral Point Road Street Plan**  
7601 Mineral Point Road  
Madison  
Dane County, WI

REVISIONS	NO.	DATE	REMARKS
	1	07/26/23	REVISION #3

SCALE: AS SHOWN

DATE: 03/31/2022

DRAFTER: ZDRE

CHECKED: JZAM

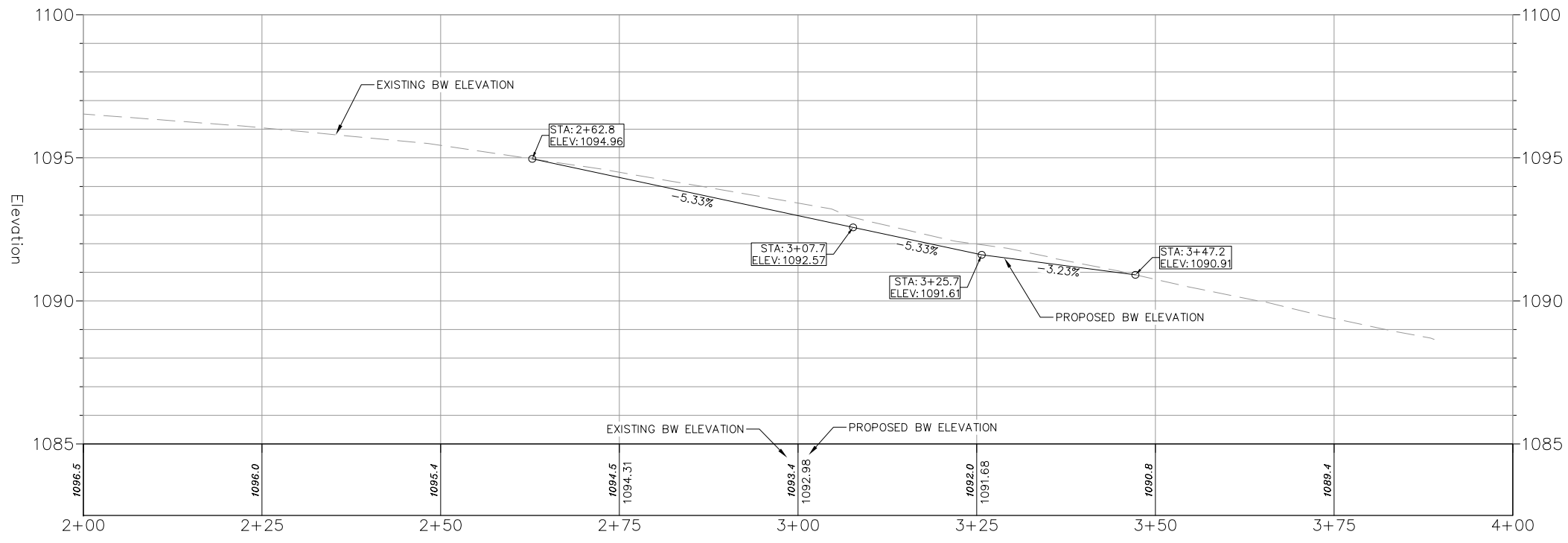
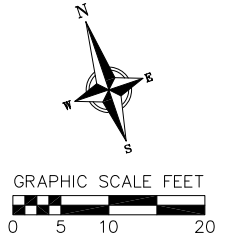
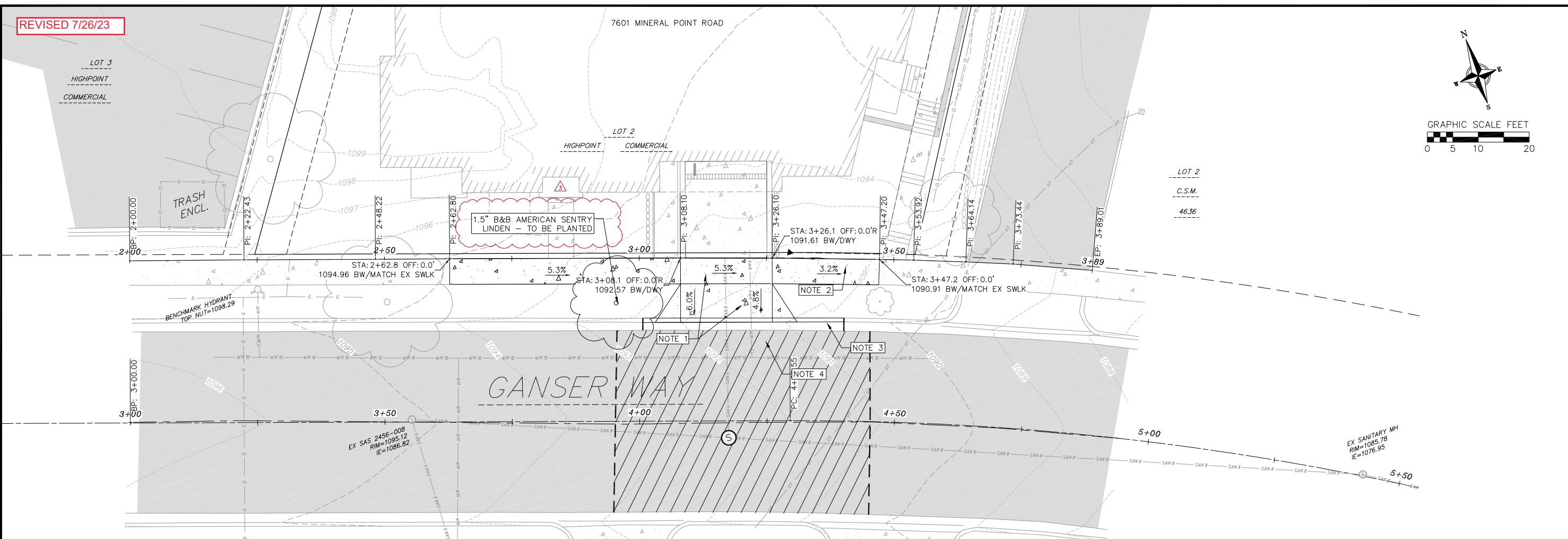
PROJECT NO.: 200260

CITY PROJECT NO. 13894  
CONTRACT NO. 9117

**P-1**

© 2018 Vierbicher Associates, Inc. M:\Northpointe Development\200260\_7401 Mineral Point Road\CADD\200260\_Base.dwg by:jzam 26 Jul 2023 - 3:15p

REVISED 7/26/23



**ABBREVIATIONS**

- STMH - STORM MANHOLE
- FI - FIELD INLET
- CI - CURB INLET
- CB - CATCH BASIN
- EW - ENDWALL
- SMH - SANITARY MANHOLE

- NOTES:**
- 7" CONCRETE DRIVEWAY & SIDEWALK. SEE COMMERCIAL DRIVEWAY PERMIT NO. LNDUSE
  - 5" CONCRETE SIDEWALK
  - REMOVE AND REPLACE CURB & GUTTER TO NEAREST JOINT AND TO MATCH EXISTING GRADES
  - MILL AND OVERLAY TYPE A ASPHALT PAVEMENT PER THE CITY'S PATCHING CRITERIA AND S.D.D 4.02. MILL AND OVERLAY SHALL BE 2" THICK, FROM CURB TO THE CENTERLINE OF THE ROAD, AND 50' LONG.
  - SEE SHEET D-1 FOR GENERAL NOTES AND LEGENDS
  - CONTRACTOR SHALL CONTACT CITY FORESTRY (608) 266-4816 AT LEAST ONE WEEK PRIOR TO PLANTING TO SCHEDULE INSPECTING THE NURSERY STOCK AND REVIEW PLANTING SPECIFICATIONS WITH THE LANDSCAPER.

**Ganser Way Street Plan**  
7601 Mineral Point Road  
Madison  
Dane County, WI

NO.	DATE	REVISIONS	REMARKS
1	05/23/22		
2	07/26/23		

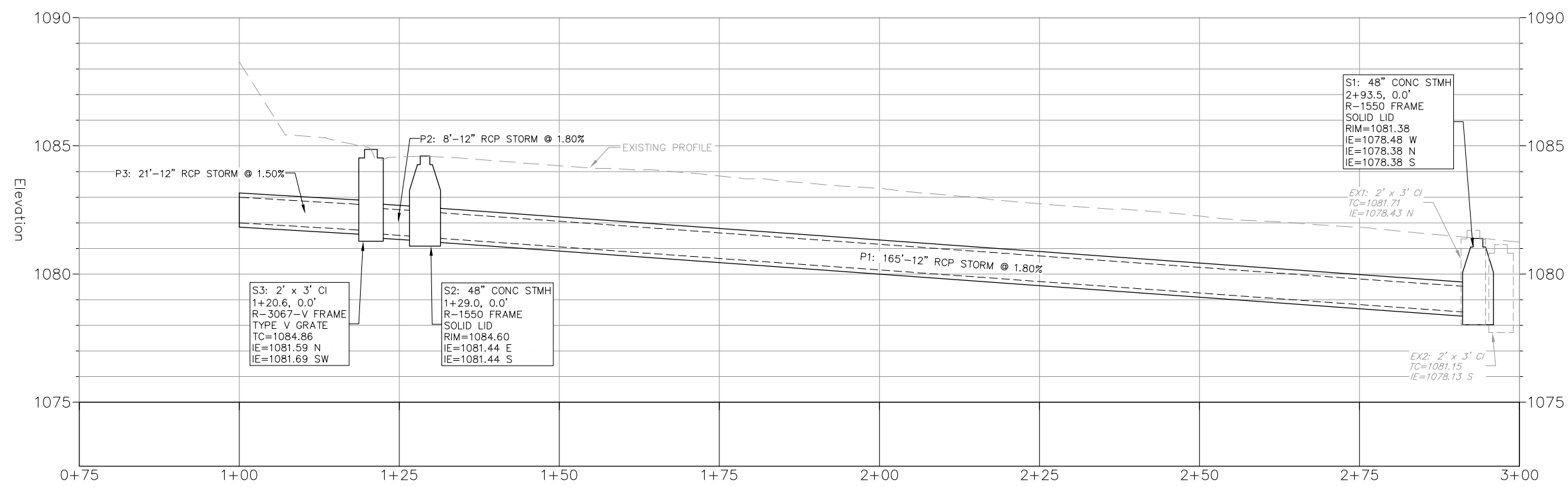
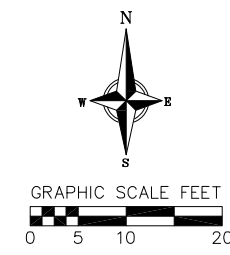
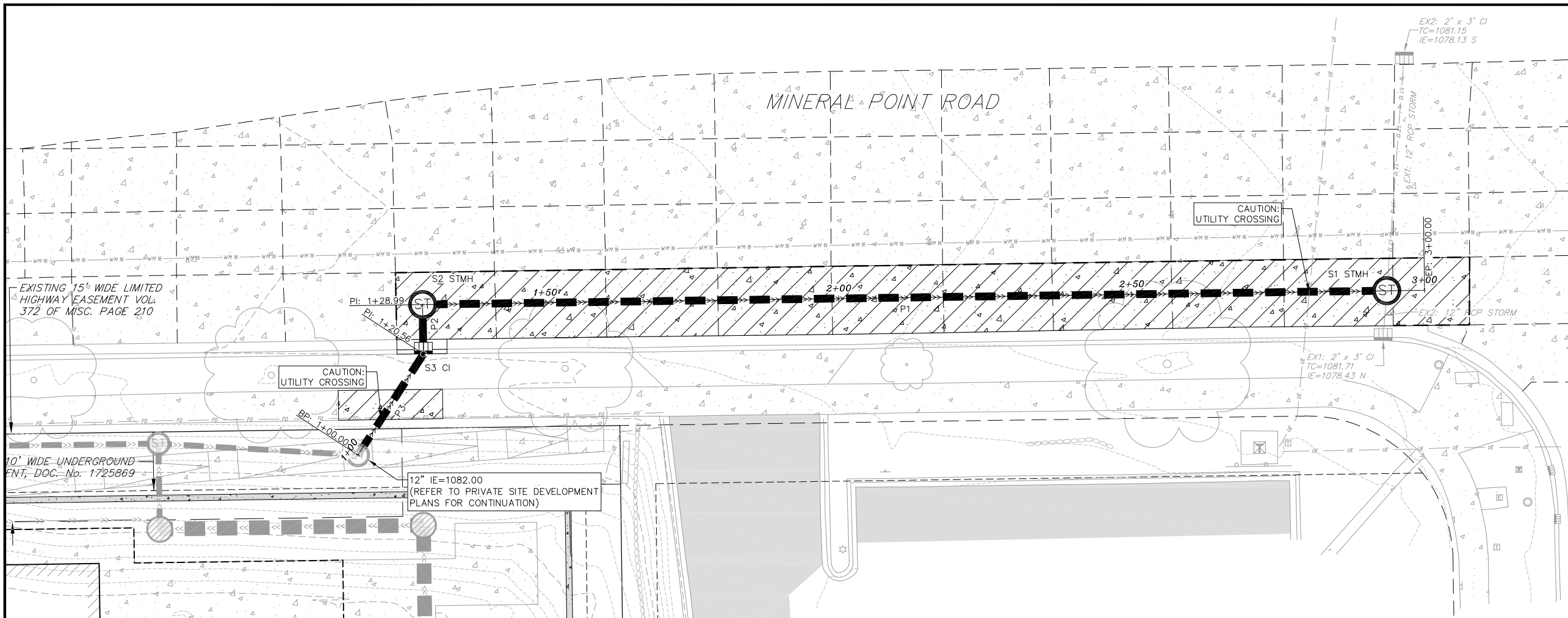
SCALE: AS SHOWN

DATE: 03/31/2022

DRAFTER: ZDRE

CHECKED: JZAM

PROJECT NO.: 200260



**ABBREVIATIONS**

STMH - STORM MANHOLE  
FI - FIELD INLET  
CI - CURB INLET  
CB - CATCH BASIN  
EW - ENDWALL  
SMH - SANITARY MANHOLE

NOTES:  
1. SEE SHEET D-1 FOR GENERAL NOTES AND LEGENDS

**DIGGERS HOTLINE**  
Dial 811 or (800) 242-8511  
www.DiggersHotline.com

THE LOCATION OF EXISTING UTILITIES, BOTH UNDERGROUND AND OVERHEAD ARE APPROXIMATE ONLY AND HAVE NOT BEEN INDEPENDENTLY VERIFIED BY THE OWNER OR ITS REPRESENTATIVE. THE CONTRACTOR SHALL BE RESPONSIBLE FOR DETERMINING THE EXACT LOCATION OF ALL EXISTING UTILITIES WHETHER SHOWN ON THESE PLANS OR NOT, BEFORE COMMENCING WORK, AND SHALL BE FULLY RESPONSIBLE FOR ANY AND ALL DAMAGES WHICH MIGHT BE CAUSED BY THE CONTRACTOR'S FAILURE TO EXACTLY LOCATE AND PRESERVE ANY AND ALL UTILITIES.

CALL DIGGER'S HOTLINE  
1-800-242-8511

REVISIONS	NO.	DATE	REMARKS

SCALE AS SHOWN

DATE 03/31/2022

DRAFTER ZDRE

CHECKED JZAM

PROJECT NO. 200260

STORM STRUCTURE TABLE								
STRUCTURE NAME	STRUCTURE TYPE	STATION	OFFSET	FRAME	COVER	RIM/TC	INVERT	DEPTH
EX1	2' x 3' CI	2+92.8	8.5 R	R-3067	TYPE R GRATE	1081.71	1078.43	3.28
EX2	2' x 3' CI	2+97.1	40.6 L	R-3067	TYPE R GRATE	1081.15	1078.13	3.02
S1	48" CONC STMH	2+93.5	0.0	R-1550	SOLID LID	1081.38	1078.38	3.01
S2	48" CONC STMH	1+29.0	0.0	R-1550	SOLID LID	1084.60	1081.44	3.16
S3	2' x 3' CI	1+20.6	0.0	R-3067	TYPE V GRATE	1084.86	1081.69	3.17

ABBREVIATIONS
STMH - STORM MANHOLE
FI - FIELD INLET
CI - CURB INLET
CB - CATCH BASIN
EW - ENDWALL
SMH - SANITARY MANHOLE

- NOTES:  
 1. SEE SHEET D-1 FOR GENERAL NOTES AND LEGENDS

STORM PIPE TABLE								
PIPE NAME	PIPE TYPE	SIZE (IN.)	FROM	TO	LENGTH (FT)	START INV	END INV	SLOPE
P1	RCP	12	S1	S2	165	1078.48	1081.44	1.80%
P2	RCP	12	S2	S3	8	1081.44	1081.59	1.80%
P3	RCP	12	S3		21	1081.69	1082.00	1.50%
EX1	RCP	12	EX2	S1	41	1078.13	1078.38	0.61%
EX2	RCP	12	S1	EX1	8	1078.38	1078.43	0.61%

REVISIONS	REVISIONS	REVISIONS
NO.	DATE	REMARKS

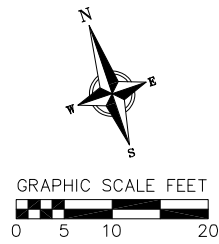
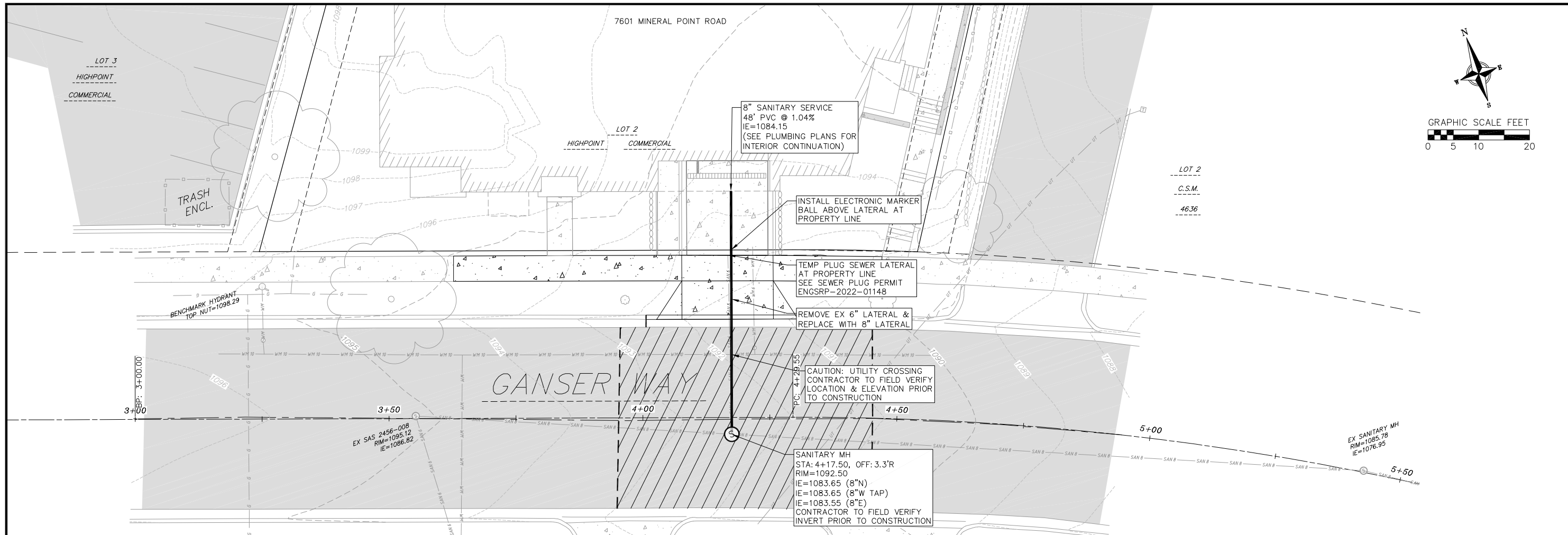
SCALE AS SHOWN

DATE 03/31/2022

DRAFTER ZDRE

CHECKED JZAM

PROJECT NO. 200260



ABBREVIATIONS	
STMH	STORM MANHOLE
FI	FIELD INLET
CI	CURB INLET
CB	CATCH BASIN
EW	ENDWALL
SMH	SANITARY MANHOLE

- NOTES:
- SEE SHEET D-1 FOR GENERAL NOTES AND LEGENDS

REVISIONS		REVISIONS	
NO.	DATE	NO.	DATE
1	05/23/22		

SCALE	AS SHOWN
DATE	05/23/2022
DRAFTER	ZDRE
CHECKED	JZAM
PROJECT NO.	200260