

Madison, Wisconsin

CITY OF MADISON

CITY ENGINEERING DIVISION

DEPARTMENT OF PUBLIC WORKS

PLAN OF PROPOSED IMPROVEMENT

PUBLIC IMPROVEMENT PROJECT APPROVED

MARCH 1, 2022

BY THE COMMON COUNCIL OF MADISON, WISCONSIN

PUBLIC IMPROVEMENT DESIGN APPROVED BY:

Greg Fries

Sep 8, 2022

City Engineer

Date

INDEX OF SHEETS

| | | |
|-----------|-------|-----------------------------------|
| SHEET NO. | D1 | STANDARD NOTES & TYPICAL SECTIONS |
| SHEET NO. | P1-P2 | PLAN & PROFILE |
| SHEET NO. | U1 | UTILITY PLAN |

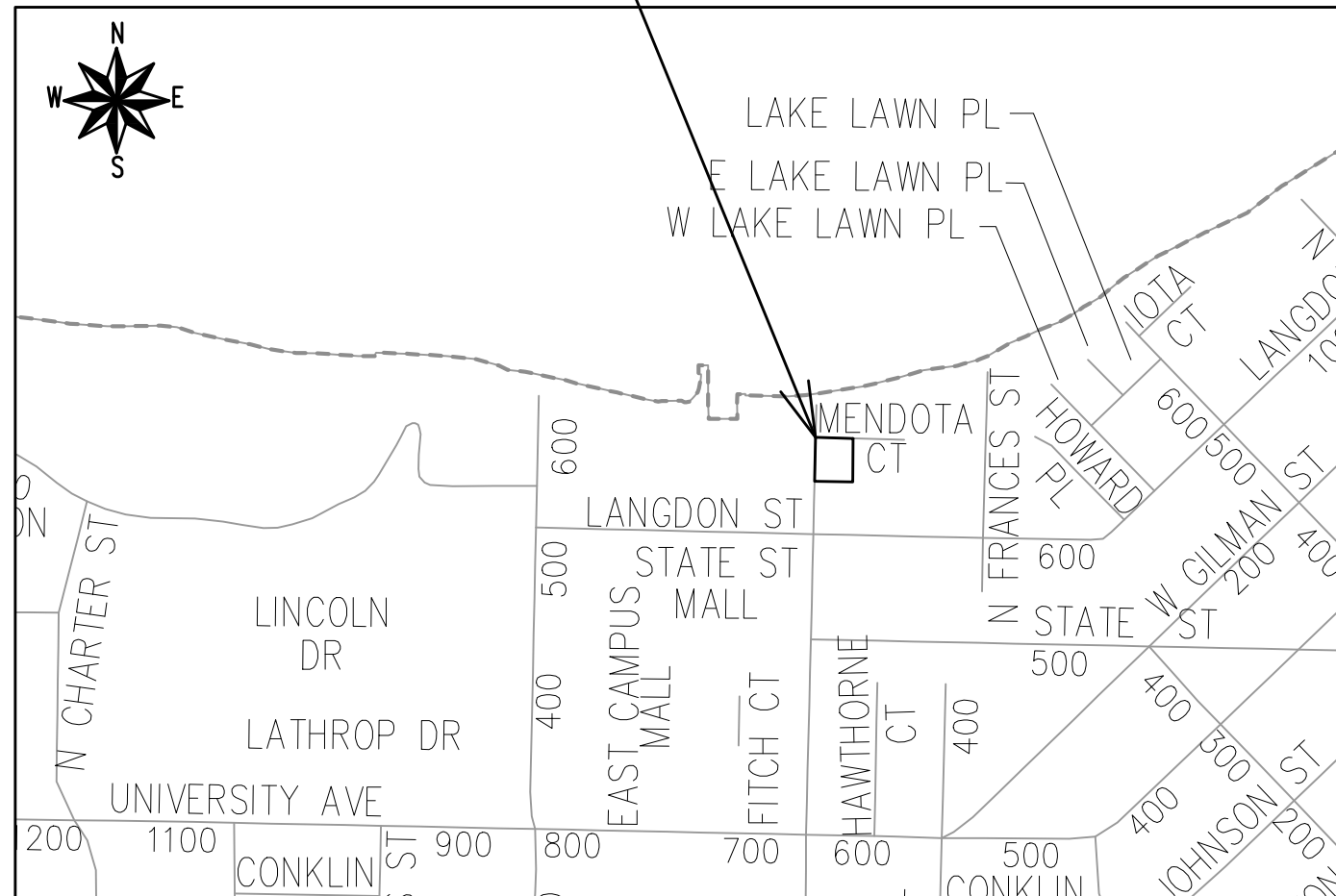
619 - 621 N LAKE STREET

NO MAINTENANCE PLAN REQUIRED

REVISION HISTORY
 REVISION 1 - 4/26/23
 REVISION 2 - 7/10/23

CITY PROJECT NO. 13990
CONTRACT NO. 9133

PROJECT LOCATION



STREET DESIGNED BY:

SEE INDIVIDUAL SHEET

SANITARY SEWER DESIGNED BY:

SEE INDIVIDUAL SHEET

STORM SEWER DESIGNED BY:

SEE INDIVIDUAL SHEET

WATER DESIGNED BY:

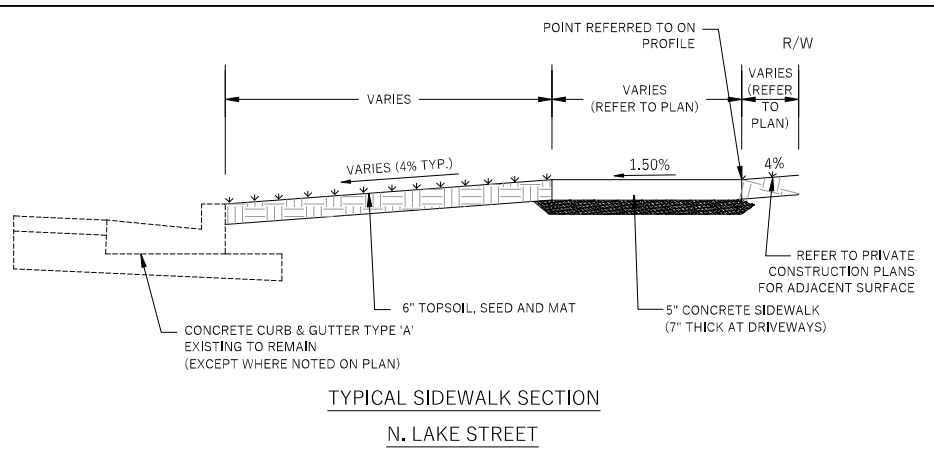
SEE INDIVIDUAL SHEET

PLOT SCALE: 1:1_XREF

PLOT NAME: ---

REV. DATE: 8/24/2022 7:22 AM

ORIGINATOR: CITY_OF_MADISON



General:
 THE DEVELOPER SHALL REPLACE ALL CURB & GUTTER AND SIDEWALK THAT IS DAMAGED OR DETERMINED TO BE IN UNSATISFACTORY CONDITION, REGARDLESS OF WHETHER THE DAMAGE EXISTED PRIOR TO CONSTRUCTION.

PAVEMENT SAWCUTS AND FINAL PAVEMENT PATCHING LIMITS SHALL BE AS DIRECTED BY THE CITY CONSTRUCTION ENGINEER. SAWCUTS AND LIMITS SHOWN ON THE PLAN ARE BASED ON ANTICIPATED DISTURBANCE AND THE PATCHING CRITERIA BUT SHALL BE CONSIDERED APPROXIMATE. ALL PAVEMENT PATCHING SHALL BE PER THE CITY'S PATCHING CRITERIA.

ANY INFORMATION SHOWN ON THIS PLAN, WHICH IS NOT PART OF THIS RIGHT-OF-WAY PROJECT, IS PRELIMINARY AND NOT FOR CONSTRUCTION.

OBTAIN A PRINT OUT OF THE ALIGNMENT FROM WYSER ENGINEERING (adam.watkins@wyserengineering.com) PRIOR TO STAKING THIS PROJECT.

THE CONTRACTOR SHALL SUBMIT A TRAFFIC CONTROL PLAN FOR REVIEW TO THE CITY TRAFFIC ENGINEERING DIVISION AT LEAST 14 WORKING DAYS PRIOR TO WORK BEGINNING. THE TRAFFIC CONTROL PLAN SHALL COMPLY WITH ALL MUTCD REQUIREMENTS. WORK SHALL NOT PROCEED UNTIL THE TRAFFIC CONTROL PLAN HAS BEEN APPROVED. THE TRAFFIC CONTROL PLAN MAY INCLUDE BUT IS NOT LIMITED TO: LANE CLOSURE RESTRICTIONS, PEAK HOUR WORKING RESTRICTIONS, ACCESS REQUIREMENTS, ETC. THE CONTRACTOR SHALL BE RESPONSIBLE FOR PHASING WORK AS NECESSARY TO MEET THE REQUIREMENTS OF THE APPROVED TRAFFIC CONTROL PLAN.

Street Design:
 ALL DISTURBED TERRACE AREAS SHALL BE RESTORED WITH 6-INCHES OF TOP SOIL, SEED AND MAT UNLESS DIRECTED OTHERWISE ON THE PLAN OR BY THE CITY CONSTRUCTION ENGINEER.

TYPICAL PAVEMENT CROSS SLOPES SHALL BE 2% AND TERRACES SHALL SLOPE AT A 4% GRADE TOWARD THE GUTTER.

THE CROSS SLOPE OF SIDEWALKS AND BARRIER FREE SIDEWALK CURB RAMPS SHALL BE 1.5%. THE LONGITUDINAL GRADE OF BARRIER FREE SIDEWALK CURB RAMPS SHALL NOT EXCEED 8.33%. ALL SIDEWALK RAMPS SHALL BE CONSTRUCTED ACCORDING TO S.D.D. 3.04. AT ALL OTHER LOCATIONS THE LONGITUDINAL GRADE OF SIDEWALKS SHALL NOT EXCEED 5.0% OR THE ADJACENT STREET GRADE WHICHEVER IS GREATER NOR BE LESS THAN 0.5% AND SHALL DRAIN TOWARD STORM SEWER INLETS. CONCRETE TERRACE SHALL BE INSTALLED BETWEEN THE SIDEWALK AND THE BACK OF CURB AT SIDEWALK LOW POINTS WHICH CANNOT OTHERWISE BE DRAINED DIRECTLY TO THE GUTTER. SIDE SLOPES WITHIN TEN FEET OF A PUBLIC SIDEWALK SHALL NOT EXCEED 4:00:1. ALL SIDEWALK AND SIDEWALK RAMP ELEVATIONS AND GRADES SHALL BE FIELD VERIFIED AND SET TO COMPLY WITH THE CITY OF MADISON STANDARD SPECIFICATIONS AND THE A.D.A. GUIDELINES. CURB STATION AND OFFSETS SHALL BE TO THE EDGE OF PAVEMENT UNLESS OTHERWISE INDICATED. CURB ELEVATIONS SHALL BE TO THE EDGE OF PAVEMENT UNLESS OTHERWISE INDICATED.

Utilities:
 POWER POLES AND OTHER OBSTRUCTIONS SHALL BE MOVED TO PROVIDE 2 FEET MINIMUM OF CLEAR DISTANCE FROM ANY FACE OF CURB OR EDGE OF SIDEWALK.

THERE MAY BE EXISTING UTILITIES OR OTHER FEATURES WHICH ARE EITHER NOT SHOWN OR SHOWN INCORRECTLY ON THIS PLAN. IT IS THE RESPONSIBILITY OF THE DEVELOPER TO LOCATE AND IDENTIFY ALL UTILITIES AND TOPOGRAPHY WHICH MAY AFFECT THE CONSTRUCTION OF THESE IMPROVEMENTS.

IT IS THE RESPONSIBILITY OF THE DEVELOPER FOR THE COORDINATION OF RELOCATION OR ADJUSTING OF PRIVATE UTILITY FACILITIES, SUCH AS POLES, PEDESTALS, BOXES, STRUCTURES, CASTINGS OR HANDHOLES, WITH PRIVATE

UTILITY COMPANIES.

Forestry:
 ALL PROPOSED STREET TREE REMOVALS WITHIN THE RIGHT OF WAY SHALL BE REVIEWED BY CITY FORESTRY BEFORE THE PLAN COMMISSION MEETING. STREET TREE REMOVALS REQUIRE APPROVAL AND A TREE REMOVAL PERMIT ISSUED BY CITY FORESTRY. ANY STREET TREE REMOVALS REQUESTED AFTER THE DEVELOPMENT PLAN IS APPROVED BY THE PLAN COMMISSION OR THE BOARD OF PUBLIC WORKS AND CITY FORESTRY WILL REQUIRE A MINIMUM OF A 72-HOUR REVIEW PERIOD WHICH SHALL INCLUDE THE NOTIFICATION OF THE ALDERPERSON WITHIN WHO'S DISTRICT IS AFFECTED BY THE STREET TREE REMOVAL(S) PRIOR TO A TREE REMOVAL PERMIT BEING ISSUED.

AS DEFINED BY THE SECTION 107.13 OF CITY OF MADISON STANDARD SPECIFICATIONS FOR PUBLIC WORKS CONSTRUCTION: NO EXCAVATION IS PERMITTED WITHIN 5 FEET OF THE TRUNK OF THE STREET TREE OR WHEN CUTTING ROOTS OVER 3 INCHES IN DIAMETER. IF EXCAVATION IS NECESSARY, THE CONTRACTOR SHALL CONTACT MADISON CITY FORESTRY (266-4816) PRIOR TO EXCAVATION. CITY OF MADISON FORESTRY PERSONNEL SHALL ASSESS THE IMPACT TO THE TREE AND TO ITS ROOT SYSTEM PRIOR TO WORK COMMENCING. TREE PROTECTION SPECIFICATIONS CAN BE FOUND ON THE FOLLOWING WEBSITE: [HTTPS://WWW.CITYOFMADISON.COM/BUSINESS/PW/SPECS.CFM](https://www.cityofmadison.com/business/pw/specs.cfm)

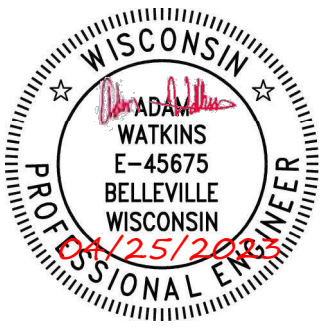
ON THIS PROJECT, STREET TREE PROTECTION ZONE FENCING IS REQUIRED. THE FENCING SHALL BE ERECTED BEFORE THE DEMOLITION, GRADING OR CONSTRUCTION BEGINS. THE FENCE SHALL INCLUDE THE ENTIRE WIDTH OF TERRACE AND, EXTEND AT LEAST 5 FEET ON BOTH SIDES OF THE OUTSIDE EDGE OF THE TREE TRUNK. DO NOT REMOVE THE FENCING TO ALLOW FOR DELIVERIES OR EQUIPMENT ACCESS THROUGH THE TREE PROTECTION ZONE.

CONTRACTOR SHALL TAKE PRECAUTIONS DURING CONSTRUCTION TO NOT DISFIGURE, SCAR, OR IMPAIR THE HEALTH OF ANY STREET TREE. CONTRACTOR SHALL OPERATE EQUIPMENT IN A MANNER AS TO NOT DAMAGE THE BRANCHES OF THE STREET TREE(S). THIS MAY REQUIRE USING SMALLER EQUIPMENT AND LOADING AND UNLOADING MATERIALS IN A DESIGNATED SPACE AWAY FROM TREES ON THE CONSTRUCTION SITE. ANY DAMAGE OR INJURY TO EXISTING STREET TREES (EITHER ABOVE OR BELOW GROUND) SHALL BE REPORTED IMMEDIATELY TO CITY FORESTRY AT 266-4816. PENALTIES AND REMEDIATION SHALL BE REQUIRED.

SECTION 107.13(G) OF CITY OF MADISON STANDARD SPECIFICATIONS FOR PUBLIC WORKS CONSTRUCTION ADDRESSES SOIL COMPACTION NEAR STREET TREES AND SHALL BE FOLLOWED BY CONTRACTOR. THE STORAGE OF PARKED VEHICLES, CONSTRUCTION EQUIPMENT, BUILDING MATERIALS, REFUSE, EXCAVATED SPOILS OR DUMPING OF POISONOUS MATERIALS ON OR AROUND TREES AND ROOTS WITHIN FIVE (5) FEET OF THE TREE OR WITHIN THE PROTECTION ZONE IS PROHIBITED.

CONTRACTOR SHALL CONTACT CITY FORESTRY AT (608) 266-4816 TO SCHEDULE INSPECTION AND APPROVAL OF NURSERY TREE STOCK AND REVIEW PLANTING SPECIFICATIONS WITH THE LANDSCAPER AT LEAST ONE WEEK PRIOR TO STREET TREE PLANTING.

CALL CITY FORESTRY 608-266-4816 BEFORE EXCAVATION FOR SIDEWALK INSTALLATION.



File: W:\2019\190661_GSA - 619 N. Lake Street.dwg 19-0661_Civil Design_Public Plans.dwg Layout: D-1 User: Adam Plotted: Aug 30, 2022 - 2:58pm

623 N LAKE STREET
 ALCHEMY APARTMENTS IMPROVEMENTS
 CITY OF MADISON, DANE COUNTY, WI

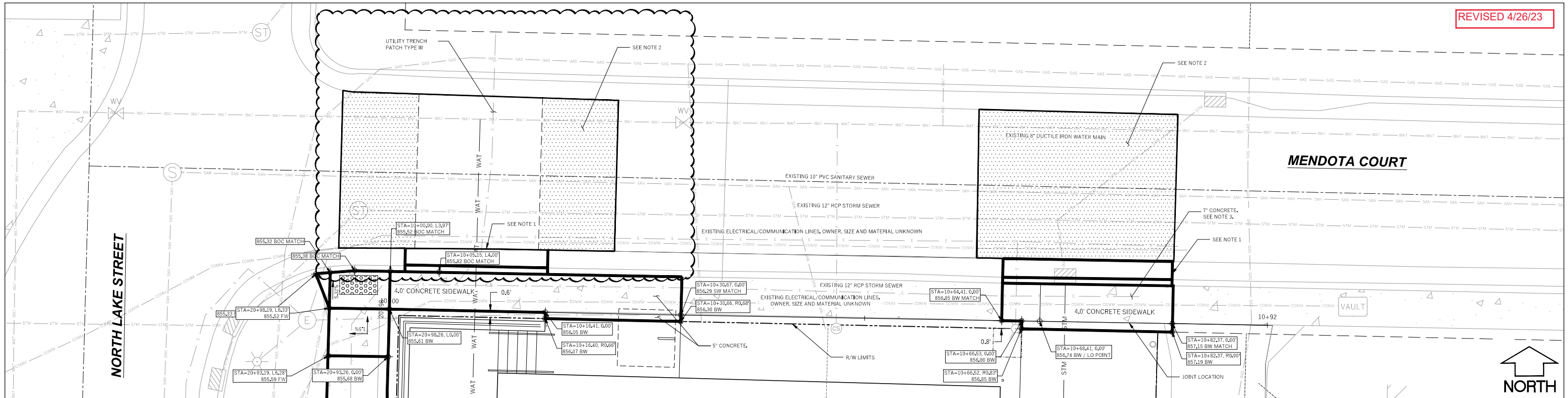


| | |
|--|--|
| Sheet Title: | STANDARD NOTES AND TYPICAL SECTION CITY OF MADISON PROJECT NO. 13990, CONTRACT NO. 9133 |
| 623 NORTH LAKE STREET MADISON, WI 53703 | |



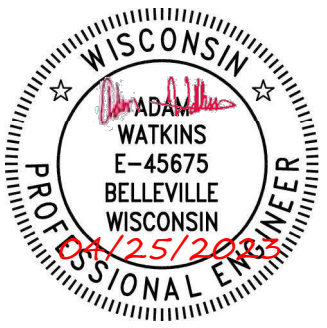
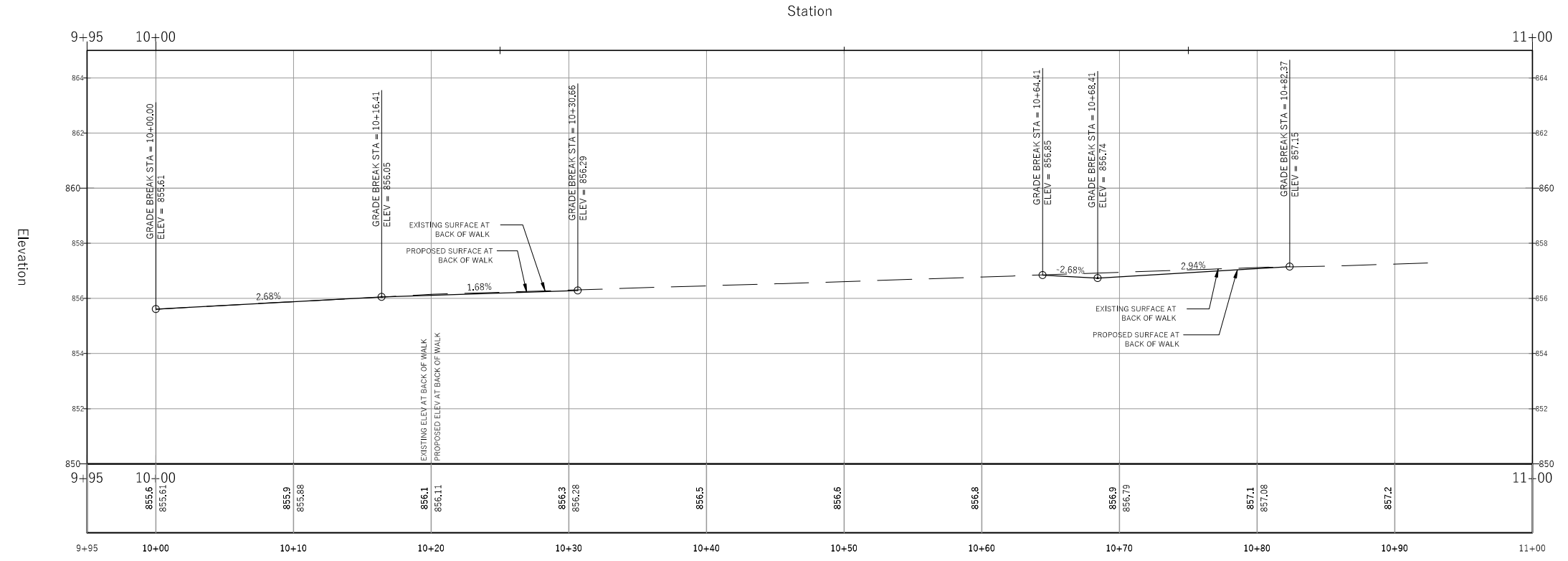
| | |
|---------------|---------------------|
| Graphic Scale | 0' 2.5' 5' 7.5' 10' |
| Revisions: | |
| No. | |
| Date: | |
| Description: | |

| | |
|--------------|--------------|
| Wyser Number | 19-0661 |
| Set Type | CONSTRUCTION |
| Date Issued | 08/15/2022 |
| Sheet Number | D-1 |



- NOTES:
1. REPLACE CURB AND GUTTER, POTENTIAL 2" MILL AND OVERLAY. TAKE CARE TO NOT DAMAGE PAVEMENT EDGE TO AVOID MILL AND OVERLAY. FINAL LIMITS TO BE DETERMINED BY CONSTRUCTION ENGINEER.
 2. 2" MILL AND OVERLAY ONLY, OR AS DIRECTED BY THE CONSTRUCTION ENGINEER, IN HATCHED AREA.
 3. REFER TO CITY OF MADISON STANDARD DETAIL DRAWING 3.02 - "MADISON STANDARD CURB CUT DETAILS."
 4. CONTRACTOR SHALL TAKE PRECAUTIONS DURING CONSTRUCTION TO NOT DISFIGURE, SCAR, OR IMPAIR THE HEALTH OF ANY STREET TREE. CONTRACTOR SHALL OPERATE EQUIPMENT IN A MANNER AS TO NOT DAMAGE THE BRANCHES OF THE STREET TREE(S). THIS MAY REQUIRE USING SMALLER EQUIPMENT AND LOADING AND UNLOADING MATERIALS IN A DESIGNATED SPACE AWAY FROM TREES ON THE CONSTRUCTION SITE. ANY DAMAGE OR INJURY TO EXISTING STREET TREES (EITHER ABOVE OR BELOW GROUND) SHALL BE REPORTED IMMEDIATELY TO CITY FORESTRY AT 608-266-4816. PENALTIES AND REMEDIATION SHALL BE REQUIRED. SECTION 107.13(G) OF CITY OF MADISON STANDARD SPECIFICATIONS FOR PUBLIC WORKS CONSTRUCTION ADDRESSES SOIL COMPACTION NEAR STREET TREES AND SHALL BE FOLLOWED BY CONTRACTOR. THE STORAGE OF PARKED VEHICLES, CONSTRUCTION EQUIPMENT, BUILDING MATERIALS, REFUSE, EXCAVATED SPOILS OR DUMPING OF POISONOUS MATERIALS ON OR AROUND TREES AND ROOTS WITHIN FIVE (5) FEET OF THE TREE OR WITHIN THE PROTECTION ZONE IS PROHIBITED.

Mendota Court Sidewalk PROFILE



623 N LAKE STREET
 ALCHEMY APARTMENTS IMPROVEMENTS
 CITY OF MADISON, DANE COUNTY, WI

WYSER ENGINEERING

Sheet Title:
 PLAN AND PROFILE
 MENDOTA COURT SIDEWALK
 CITY OF MADISON PROJECT NO. 13990, CONTRACT NO. 9133

623 NORTH LAKE STREET
 MADISON, WI 53703

DIGGERS HOTLINE
 Toll Free (800) 242-8511 or- 811
 Hearing Impaired TDD (800) 542-2289
 www.DiggersHotline.com

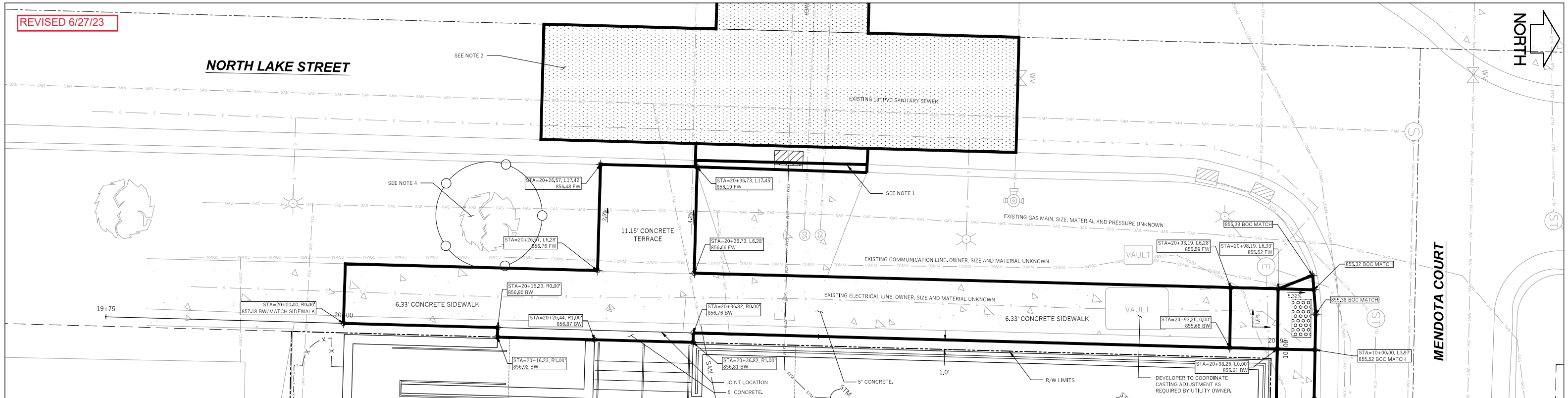
Graphic Scale: 0' 2.5' 5' 7.5' 10'

| No. | Date | Description |
|-----|------------|-----------------|
| 1 | 04/25/2023 | Utility Updates |

| | |
|--------------|--------------|
| Wyser Number | 19-0661 |
| Set Type | CONSTRUCTION |
| Date Issued | 08/15/2022 |
| Sheet Number | P-1 |

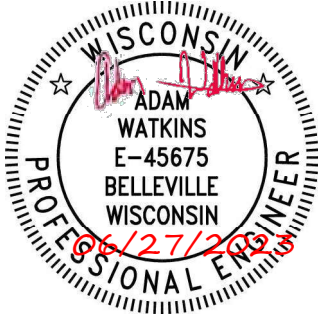
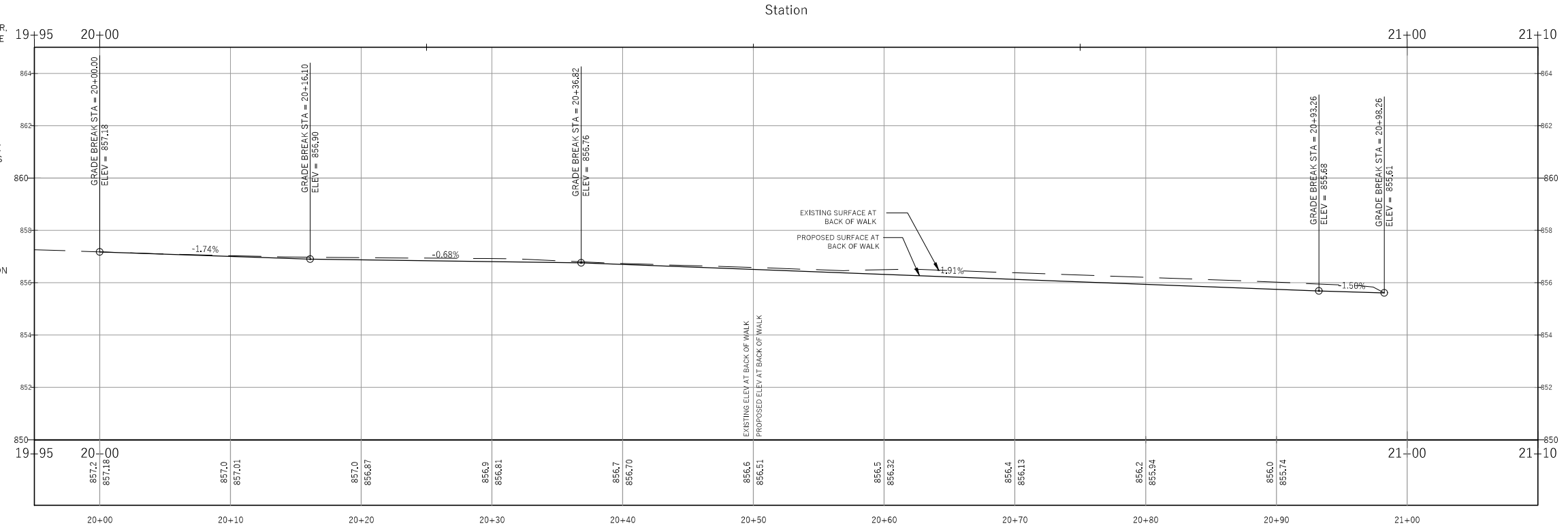
REVISED 6/27/23

NORTH LAKE STREET



- NOTES:
1. REPLACE CURB AND GUTTER, POTENTIAL 2" MILL AND OVERLAY. TAKE CARE TO NOT DAMAGE PAVEMENT EDGE TO AVOID MILL AND OVERLAY. FINAL LIMITS TO BE DETERMINED BY CONSTRUCTION ENGINEER.
 2. 2" MILL AND OVERLAY ONLY, OR AS DIRECTED BY THE CONSTRUCTION ENGINEER. IN HATCHED AREA, THE PAVEMENT PATCHING LIMITS SHOWN ARE APPROXIMATE AND THE FINAL LIMITS SHALL BE DETERMINED BY THE CONSTRUCTION ENGINEER.
 3. CONTRACTOR SHALL CONTACT CITY FORESTRY AT 608-266-4816 BEFORE EXCAVATION FOR SIDEWALK INSTALLATION.
 4. ON THIS PROJECT, STREET TREE PROTECTION ZONE FENCING IS REQUIRED. THE FENCING SHALL BE ERECTED BEFORE THE DEMOLITION, GRADING OR CONSTRUCTION BEGINS. THE FENCE SHALL INCLUDE THE ENTIRE WIDTH OF TERRACE AND, EXTEND AT LEAST 5 FEET ON BOTH SIDES OF THE OUTSIDE EDGE OF THE TREE TRUNK. DO NOT REMOVE THE FENCING TO ALLOW FOR DELIVERIES OR EQUIPMENT ACCESS THROUGH THE TREE PROTECTION ZONE.
 5. CONTRACTOR SHALL TAKE PRECAUTIONS DURING CONSTRUCTION TO NOT DISFIGURE, SCAR, OR IMPAIR THE HEALTH OF ANY STREET TREE. CONTRACTOR SHALL OPERATE EQUIPMENT IN A MANNER AS TO NOT DAMAGE THE BRANCHES OF THE STREET TREE(S). THIS MAY REQUIRE USING SMALLER EQUIPMENT AND LOADING AND UNLOADING MATERIALS IN A DESIGNATED SPACE AWAY FROM TREES ON THE CONSTRUCTION SITE. ANY DAMAGE OR INJURY TO EXISTING STREET TREES (EITHER ABOVE OR BELOW GROUND) SHALL BE REPORTED IMMEDIATELY TO CITY FORESTRY AT 608-266-4816. PENALTIES AND REMEDIATION SHALL BE REQUIRED. SECTION 107.13(G) OF CITY OF MADISON STANDARD SPECIFICATIONS FOR PUBLIC WORKS CONSTRUCTION ADDRESSES SOIL COMPACTION NEAR STREET TREES AND SHALL BE FOLLOWED BY CONTRACTOR. THE STORAGE OF PARKED VEHICLES, CONSTRUCTION EQUIPMENT, BUILDING MATERIALS, REFUSE, EXCAVATED SPOILS OR DUMPING OF POISONOUS MATERIALS ON OR AROUND TREES AND ROOTS WITHIN FIVE (5) FEET OF THE TREE OR WITHIN THE PROTECTION ZONE IS PROHIBITED.

Lake St Sidewalk PROFILE



623 N LAKE STREET
 ALCHEMY APARTMENTS IMPROVEMENTS
 CITY OF MADISON, DANE COUNTY, WI

Sheet Title:
 PLAN AND PROFILE
 NORTH LAKE STREET SIDEWALK
 CITY OF MADISON PROJECT NO. 13990, CONTRACT NO. 9133

623 NORTH LAKE STREET
 MADISON, WI 53703

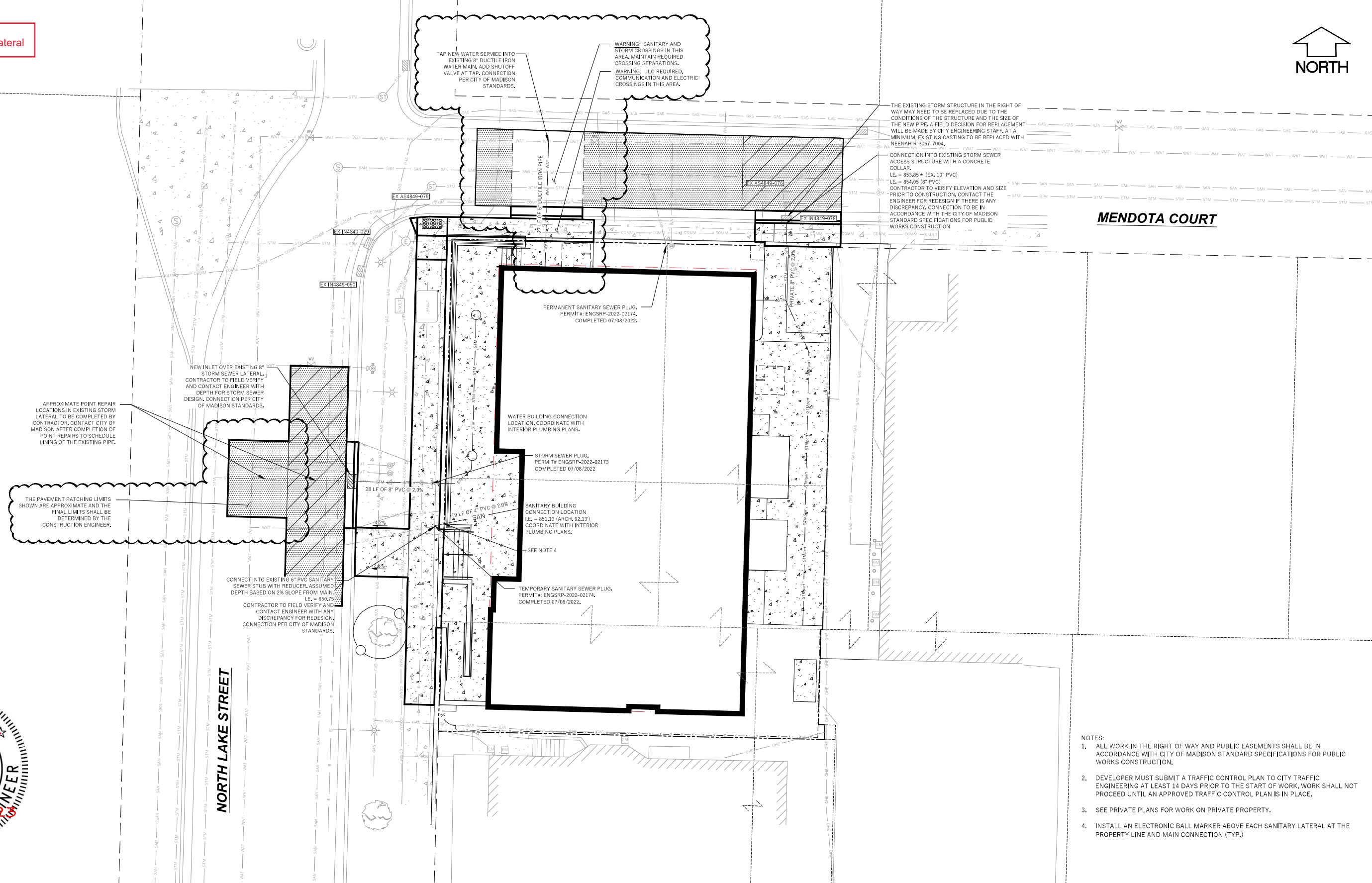


| | |
|---|----------------------------|
| Graphic Scale 0' 2.5' 5' 7.5' 1" = 10' | |
| Revisions: | |
| No. | Description: |
| 1 | 04/25/2023 Utility Updates |
| 2 | 06/27/2023 Utility Updates |

| | |
|--------------|--------------|
| Wyser Number | 19-0661 |
| Set Type | CONSTRUCTION |
| Date Issued | 08/15/2022 |
| Sheet Number | P-2 |

File: W:\2019\190661_GSA - 619 N. Lake Street.dwg 19-0661_Civil Design_Public Plans.dwg Layout: P-2 User: Adam Plotted: Jul 11, 2023 - 9:20am

REVISED 6/27/23
Added point repairs to ex. storm lateral



APPROXIMATE POINT REPAIR LOCATIONS IN EXISTING STORM LATERAL TO BE COMPLETED BY CONTRACTOR, CONTACT CITY OF MADISON AFTER COMPLETION OF POINT REPAIRS TO SCHEDULE LINING OF THE EXISTING PIPE.

THE PAVEMENT PATCHING LIMITS SHOWN ARE APPROXIMATE AND THE FINAL LIMITS SHALL BE DETERMINED BY THE CONSTRUCTION ENGINEER.

TAP NEW WATER SERVICE INTO EXISTING 8" DUCTILE IRON WATER MAIN, ADD SHUTOFF VALVE AT TAP, CONNECTION PER CITY OF MADISON STANDARDS.

WARNING: SANITARY AND STORM CROSSINGS IN THIS AREA, MAINTAIN REQUIRED CROSSING SEPARATIONS.

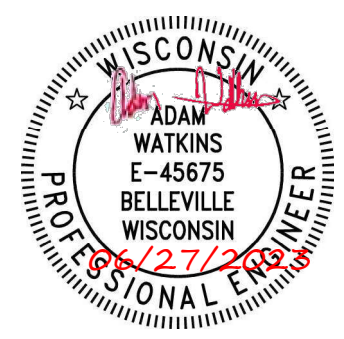
WARNING: ULO REQUIRED, COMMUNICATION AND ELECTRIC CROSSINGS IN THIS AREA.

THE EXISTING STORM STRUCTURE IN THE RIGHT OF WAY MAY NEED TO BE REPLACED DUE TO THE CONDITIONS OF THE STRUCTURE AND THE SIZE OF THE NEW PIPE, A FIELD DECISION FOR REPLACEMENT WILL BE MADE BY CITY ENGINEERING STAFF, AT A MINIMUM, EXISTING CASTING TO BE REPLACED WITH NEENAH R-3067-7004.

CONNECTION INTO EXISTING STORM SEWER ACCESS STRUCTURE WITH A CONCRETE COLLAR, I.E. = 853.85 ± (EX. 10" PVC) I.E. = 854.05 (8" PVC) CONTRACTOR TO VERIFY ELEVATION AND SIZE PRIOR TO CONSTRUCTION, CONTACT THE ENGINEER FOR REDESIGN IF THERE IS ANY DISCREPANCY, CONNECTION TO BE IN ACCORDANCE WITH THE CITY OF MADISON STANDARD SPECIFICATIONS FOR PUBLIC WORKS CONSTRUCTION.

NORTH LAKE STREET

MENDOTA COURT

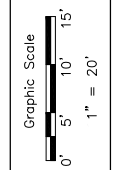


- NOTES:
1. ALL WORK IN THE RIGHT OF WAY AND PUBLIC EASEMENTS SHALL BE IN ACCORDANCE WITH CITY OF MADISON STANDARD SPECIFICATIONS FOR PUBLIC WORKS CONSTRUCTION.
 2. DEVELOPER MUST SUBMIT A TRAFFIC CONTROL PLAN TO CITY TRAFFIC ENGINEERING AT LEAST 14 DAYS PRIOR TO THE START OF WORK. WORK SHALL NOT PROCEED UNTIL AN APPROVED TRAFFIC CONTROL PLAN IS IN PLACE.
 3. SEE PRIVATE PLANS FOR WORK ON PRIVATE PROPERTY.
 4. INSTALL AN ELECTRONIC BALL MARKER ABOVE EACH SANITARY LATERAL AT THE PROPERTY LINE AND MAIN CONNECTION (TYP.)

623 N LAKE STREET
ALCHEMY APARTMENTS IMPROVEMENTS
CITY OF MADISON, DANE COUNTY, WI

Sheet Title:
UTILITY PLAN
CITY OF MADISON PROJECT NO. 13990, CONTRACT NO. 9133

623 NORTH LAKE STREET
MADISON, WI 53703



| No. | Date | Description |
|-----|------------|-----------------|
| 1 | 04/25/2023 | Utility Updates |
| 2 | 06/27/2023 | Utility Updates |

| | |
|--------------|--------------|
| Wyser Number | 19-0661 |
| Set Type | CONSTRUCTION |
| Date Issued | 08/15/2022 |
| Sheet Number | U-1 |