



Madison, Wisconsin

CITY OF MADISON

CITY ENGINEERING DIVISION

DEPARTMENT OF PUBLIC WORKS

PLAN OF PROPOSED IMPROVEMENT

302 N BASSETT STREET

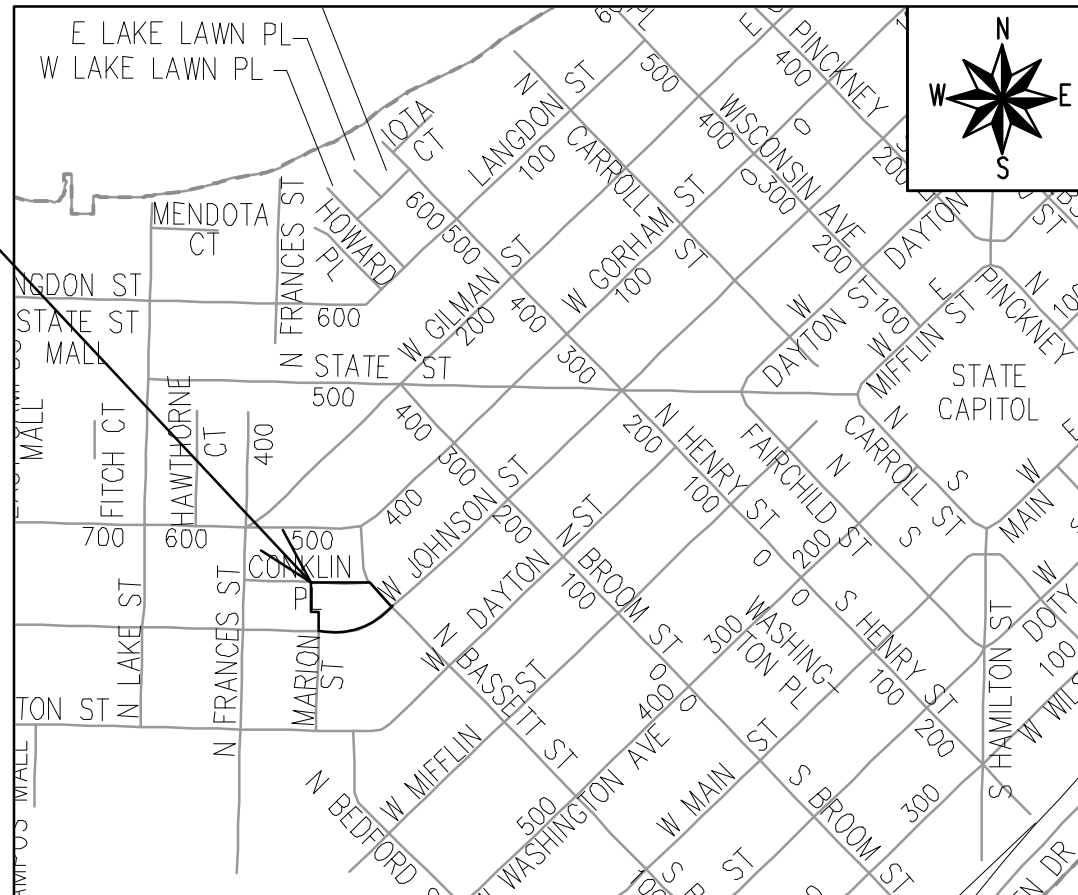
CITY PROJECT NO. 14038
CONTRACT NO. 9150

INDEX OF SHEETS

SHEET NO.	STANDARD NOTES
D1	STANDARD NOTES
D2-D3	TYPICAL SECTIONS
D-4	LANDSCAPE DETAILS
E1	ELECTRICAL PLAN
P1-P3	PLAN & PROFILES
U1	SANITARY PLAN & PROFILES
C5.1	UTILITY PLAN-PUBLIC
L1	LANDSCAPING PLAN
X1-X3	CROSS SECTIONS

NO MAINTENANCE PLAN REQUIRED

PROJECT LOCATION



PUBLIC IMPROVEMENT PROJECT APPROVED

MARCH 29, 2022

BY THE COMMON COUNCIL OF MADISON, WISCONSIN

PUBLIC IMPROVEMENT DESIGN APPROVED BY:

[Signature] Sep 8, 2023

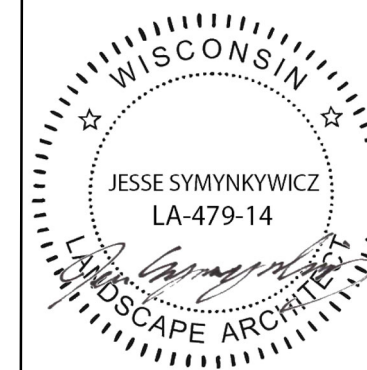
City Engineer Date

STREET GRADES DESIGNED BY:



Sep 8, 2023

PLANTERS DESIGNED BY:



Sep 8, 2023

ELECTRICAL DESIGNED BY:



Sep 8, 2023

SANITARY & STORM SEWER DESIGNED BY:

LATERAL ONLY

WATER DESIGNED BY:

LATERAL ONLY

PLOT SCALE: 1:1 XREF

PLOT NAME: --

REV. DATE: 8/18/2023 12:38 PM

ORIGINATOR: CITY OF MADISON

ALL PROPOSED STREET TREE REMOVALS WITHIN THE RIGHT OF WAY SHALL BE REVIEWED BY CITY FORESTRY BEFORE THE PLAN COMMISSION MEETING. STREET TREE REMOVALS REQUIRE APPROVAL AND A TREE REMOVAL PERMIT ISSUED BY CITY FORESTRY. ANY STREET TREE REMOVALS REQUESTED AFTER THE DEVELOPMENT PLANS ARE APPROVED BY THE PLAN COMMISSION OR THE BOARD OF PUBLIC WORKS AND CITY FORESTRY WILL REQUIRE A MINIMUM OF A 72-HOUR REVIEW PERIOD WHICH SHALL INCLUDE THE NOTIFICATION OF THE ALDERPERSON WITHIN WHO'S DISTRICT IS AFFECTED BY THE STREET TREE REMOVAL(S) PRIOR TO A TREE REMOVAL PERMIT BEING ISSUED.

AS DEFINED BY SECTION 107.13 OF THE CITY OF MADISON STANDARD SPECIFICATIONS FOR PUBLIC WORKS CONSTRUCTION, LATEST EDITION: NO EXCAVATION IS PERMITTED WITHIN 5 FEET OF THE TRUNK OF THE STREET TREE OR WHEN CUTTING ROOTS OVER 3 INCHES IN DIAMETER. IF EXCAVATION IS NECESSARY, THE CONTRACTOR SHALL CONTACT MADISON CITY FORESTRY (266-4816) PRIOR TO EXCAVATION. CITY OF MADISON FORESTRY PERSONNEL SHALL ASSESS THE IMPACT TO THE TREE AND TO ITS ROOT SYSTEM PRIOR TO WORK COMMENCING. TREE PROTECTION SPECIFICATIONS CAN BE FOUND ON THE FOLLOWING WEBSITE: www.cityofmadison.com/engineering/developers-contractors/standard-specifications

THE LOCATION AND INFORMATION FOR PROPOSED NEW TREES, IN THE PUBLIC RIGHT OF WAY OR ON PUBLIC LANDS ARE APPROXIMATE AND ARE SHOWN FOR REFERENCE ONLY. THE LOCATIONS, SPECIFICATIONS AND PLANTING METHODS OF ALL PROPOSED NEW OR REPLACEMENT TREES IN THE PUBLIC RIGHT OF WAY OR ON PUBLIC LANDS SHALL BE APPROVED BY THE CITY FORESTER PRIOR TO INSTALLATION.

NO TREES IN THE RIGHT OF WAY OR ON PUBLIC LANDS SHALL BE TRIMMED, PRUNED, REMOVED OR ADVERSELY AFFECTED IN ANY WAY UNTIL THE DEVELOPER HAS RECEIVED WRITTEN PERMISSION FROM THE CITY ENGINEER OR CITY FORESTER. SAID WRITTEN PERMISSION SHALL INCLUDE LANGUAGE INDICATING THAT SECTION 10.101 OF THE MADISON GENERAL ORDINANCES AND ADMINISTRATIVE PROCEDURE MEMORANDUM NO. 6-2, REFERRING TO NOTIFICATION OF PROPERTY OCCUPANTS AND/OR OWNERS, HAS BEEN COMPLIED WITH.

DEVELOPER MUST SUBMIT A TRAFFIC CONTROL PLAN TO CITY TRAFFIC ENGINEERING AT LEAST 14 DAYS PRIOR TO THE START OF WORK. WORK SHALL NOT PROCEED UNTIL AN APPROVED TRAFFIC CONTROL PLAN IS IN PLACE.

CONTACT THE PROJECT ENGINEER AND DESIGNER, FADI EL MUSA GONZALEZ, AT FELMUSAGONZALEZ@CITYOFMADISON.COM FOR CAD FILES AND ALIGNMENT DATA PRIOR TO STAKING.

UNDERDRAINS SHALL BE INSTALLED PER STANDARD DETAIL DRAWING 4.05 FOR 75' ON EACH SIDE OF THE LOW POINT, OR TO THE NEAREST CURB HIGH POINT. ALL UNDERDRAIN SHALL BE WRAPPED.

ALL GUTTERS SHALL DRAIN WITH A MINIMUM GRADE OF 0.5% TOWARD STORM SEWER INLETS.

ALL DITCHES SHALL DRAIN WITH A MINIMUM GRADE OF 0.5%

THE CROSS SLOPE OF SIDEWALKS AND BARRIER FREE SIDEWALK CURB RAMPS SHALL TYPICALLY BE 1.5%. THE LONGITUDINAL GRADE OF BARRIER FREE SIDEWALK CURB RAMPS SHALL NOT EXCEED 8.33%. ALL SIDEWALK RAMPS SHALL BE CONSTRUCTED ACCORDING TO S.D.D. 3.04. AT ALL OTHER LOCATIONS THE LONGITUDINAL GRADE OF SIDEWALKS SHALL NOT EXCEED 5.0 % OR THE ADJACENT STREET GRADE WHICHEVER IS GREATER NOR BE LESS THAN 0.5% AND SHALL DRAIN TOWARD STORM SEWER INLETS. SIDE SLOPES WITHIN TEN FEET OF A PUBLIC SIDEWALK SHALL NOT EXCEED 4:1. ALL SIDEWALK AND SIDEWALK RAMP ELEVATIONS AND GRADES SHALL BE FIELD VERIFIED AND SET TO COMPLY WITH THE CITY OF MADISON STANDARD SPECIFICATIONS AND THE A.D.A. GUIDELINES.

CURB STATION AND OFFSETS SHALL BE TO THE EDGE OF PAVEMENT UNLESS OTHERWISE INDICATED. CURB ELEVATIONS SHALL BE TO THE EDGE OF PAVEMENT UNLESS OTHERWISE INDICATED.

POWER POLES AND OTHER OBSTRUCTIONS SHALL BE MOVED TO PROVIDE 2 FEET MINIMUM OF CLEAR DISTANCE FROM ANY FACE OF CURB OR EDGE OF SIDEWALK UNLESS OTHERWISE INDICATED ON THE PLANS.

ANY INFORMATION SHOWN ON THIS PLAN, WHICH IS NOT PART OF THIS RIGHT-OF-WAY PROJECT, IS PRELIMINARY AND NOT FOR CONSTRUCTION.

THERE MAY BE EXISTING UTILITIES OR OTHER FEATURES WHICH ARE EITHER NOT SHOWN OR SHOWN INCORRECTLY ON THIS PLAN. IT IS THE RESPONSIBILITY OF THE DEVELOPER TO LOCATE AND IDENTIFY ALL UTILITIES AND TOPOGRAPHY WHICH MAY AFFECT THE CONSTRUCTION OF THESE IMPROVEMENTS.

ALL PERMANENT SIGNING AND POSTING WILL BE DETERMINED AND PROVIDED BY THE TRAFFIC ENGINEERING DIVISION, FOLLOWING CONSTRUCTION OF THESE IMPROVEMENTS.

THE DEVELOPER SHALL PROVIDE, INSTALL AND MAINTAIN ALL STREET END BARRICADES, SIGNING AND TRAFFIC CONTROL, AS REQUIRED BY THE CITY TRAFFIC ENGINEER.

PAVEMENT SAWCUTS SHALL BE AS DIRECTED BY THE CITY CONSTRUCTION ENGINEER. SAWCUTS SHOWN ON THE PLAN ARE APPROXIMATE.

CURB ON CUL DE SACS SHALL BE INSTALLED ACCORDING TO S.D.D 3.05.




ALL WORK IN THE RIGHT OF WAY AND PUBLIC EASEMENTS SHALL BE IN ACCORDANCE WITH THE CITY OF MADISON STANDARD SPECIFICATIONS FOR PUBLIC WORKS CONSTRUCTION, LATEST EDITION.

ALL PROPOSED IMPROVEMENTS IN THE RIGHT-OF-WAY ARE BASED ON SURVEY DATA PROVIDED BY THE DEVELOPER OR ITS CONSULTANT. IN THE CASE THAT THE PROPOSED IMPROVEMENTS CAN NOT BE INSTALLED PER THESE PLANS OR THE CITY OF MADISON STANDARD SPECIFICATION FOR PUBLIC WORKS CONSTRUCTION, LATEST EDITION, THE DEVELOPER SHALL BE RESPONSIBLE FOR THE COST OF EXTRA WORK DUE TO INACCURACIES OF THE SURVEY.


ALL UTILITY VERIFICATIONS AND ACCURACY OF THE DRAWINGS ARE THE RESPONSIBILITY OF THE DEVELOPER. ANY CONFLICTS THAT ARISE FROM MISSING OR ERRONEOUS INFORMATION WILL BE AT THE EXPENSE OF THE DEVELOPER. NO PRECAST STRUCTURES WILL BE APPROVED FOR STORM OR SANITARY SEWER UNTIL ALL POTENTIAL UTILITY CONFLICTS ARE RESOLVED.

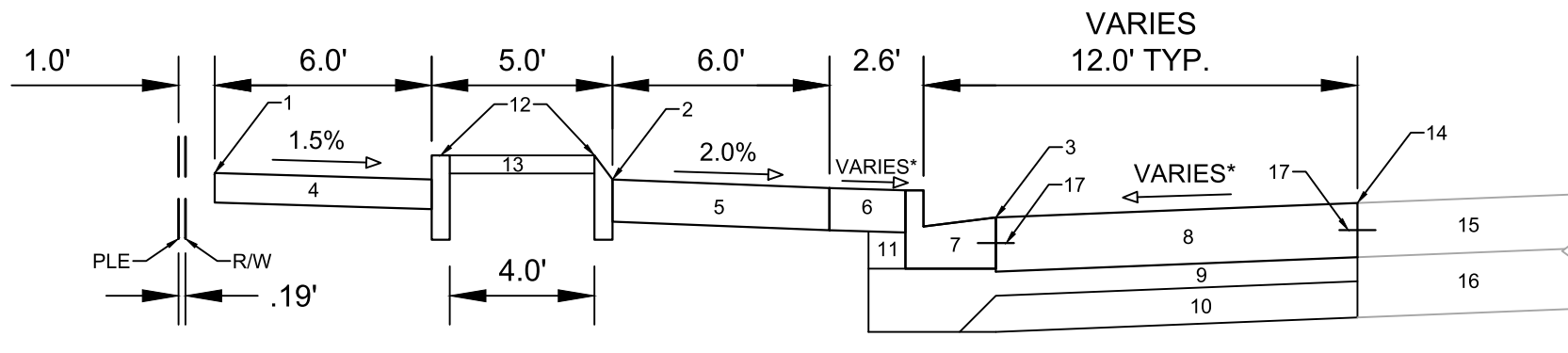
IN LOCATIONS WHERE PAVEMENT RESTORATION IS NOT IDENTIFIED ADJACENT TO CURB AND GUTTER REPLACEMENT, IT IS ASSUMED THAT CURB AND GUTTER WILL BE REPLACED WITHOUT DAMAGING ADJACENT PAVEMENT. IF DAMAGED, THE MILL AND OVERLAY LIMITS SHALL BE EXTENDED BY THE CITY CONSTRUCTION ENGINEER AS NECESSARY TO MEET THE STANDARD PATCHING CRITERIA.

CONVENTIONAL SIGNS
FIELD VERIFY ALL UTILITY LOCATIONS

<i>GAS</i>	—— G ——
<i>STORM SEWER</i>	—— ST ——
<i>SANITARY SEWER</i>	—— SAN ——
<i>WATER</i>	—— W ——
<i>BURIED ELECTRIC</i>	—— E ——
<i>OVERHEAD ELECTRIC</i>	—— OH ——
<i>POWER POLE</i>	
<i>ADA COMPLIANT RAMP W/ DETECTABLE WARNING FIELD</i>	
<i>COMBUSTIBLE FLUIDS</i>	

REVISION #1 - 9/6/2023 - FBEG
 1. SHEET ADDED.

STANDARD NOTES	14038	MADISON, WI	9150	D-1
302 N BASSETT ST				
M:\DESIGN\Projects\14038\CAD\Streets\14038EN-Details.dwg				
				
14038				
D-1				



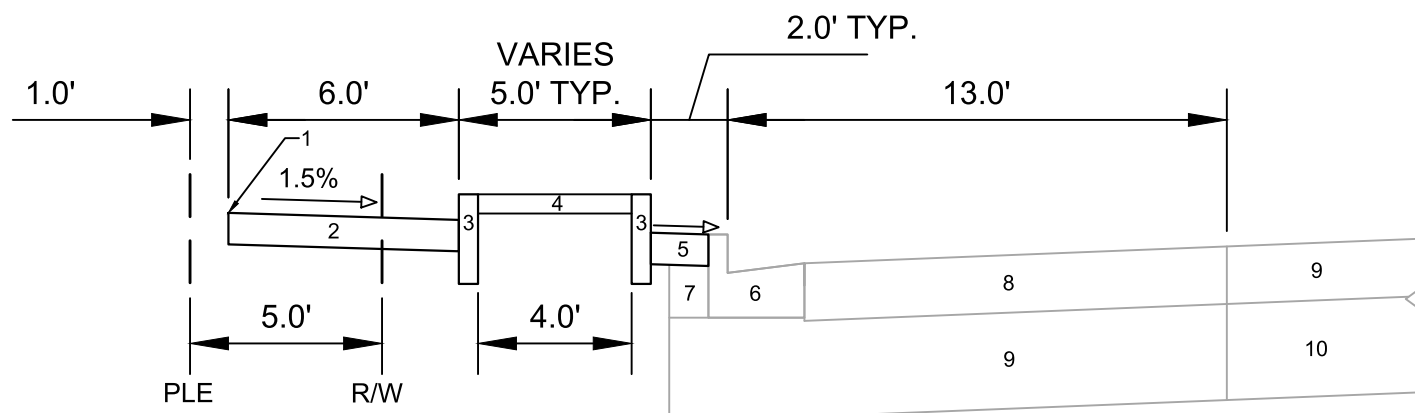
REVISION #1 - 9/6/2023 - FBEG
 1. SHEET ADDED.

SPECIAL NOTES:

- * SEE X-SHEET FOR CROSS SLOPES
- ** SEE SHEET P-2B FOR LOCATION & ELEVATION AT JOINT INTERSECTIONS
- *** TRANSVERSE JOINTS FOR BIKE LANE SHALL BE SAWED, AND SPACE APPROXIMATELY 8 FT. THE CONTRACTOR SHALL PROVIDE AND INSTALL THE BIKE LANE AS DESCRIBED BY BID ITEM 90003 - '7" COLORED CONCRETE' FOUND IN THIS LINK: www.cityofmadison.com/business/pw/contracts/documents/7847%20signed.pdf WITH EXCEPTION OF THE COLOR WHICH SHALL BE BASF MIDNIGHT MC7001 OR APPROVED EQUAL.
- **** PLANTERS IN THE RIGHT OF WAY TO BE MAINTAINED BY THE SITE DEVELOPER UNDER ENCROACHMENT AGREEMENT NO. 5892006

**TYPICAL SECTION
 N BASSETT ST**

- 1 - POINT REFERRED TO ON PROFILE FOR SIDEWALK
- 2 - POINT REFERRED TO ON PROFILE FOR BIKE LANE
- 3 - POINT REFERRED TO ON PROFILE FOR EDGE OF PAVEMENT
- 4 - 5" CONCRETE SIDEWALK
- 5 - 7" COLORED CONCRETE BIKE LANE***
- 6 - 5" CONCRETE TERRACE
- 7 - CONCRETE CURB & GUTTER TYPE 'A'
- 8 - 9" CONCRETE PAVEMENT
- 9 - 4" CRUSHED AGGREGATE BASE COURSE GRADATION 2
- 10 - 6" CRUSHED AGGREGATE BASE COURSE GRADATION 1
- 11 - FILL
- 12 - CONCRETE PLANTER, SEE SHEET D-4 FOR DETAILS****
- 13 - 3" HARDWOOD MULCH, SEE SHEET D-4 FOR DETAILS****
- 14 - EX. CONCRETE LONGITUDINAL JOINTS**
- 15 - EX. CONCRETE PAVEMENT TO REMAIN, SECTIONS TO BE REPLACED ARE IDENTIFIED ON SHEETS P-2A & P-2B
- 16 - EX. BASE COURSE TO REMAIN
- 17 - TIE BARS PER S.D.D. 3.10



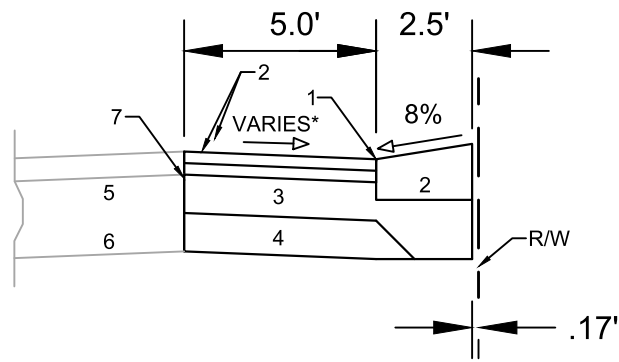
SPECIAL NOTES:

- * SEE X-SHEET FOR CROSS SLOPES
- ** PLANTERS IN THE RIGHT OF WAY TO BE MAINTAINED BY THE SITE DEVELOPER UNDER ENCROACHMENT AGREEMENT NO. 5892006

**TYPICAL SECTION
 W JOHNSON ST**

- 1 - POINT REFERRED TO ON PROFILE FOR SIDEWALK
- 2 - 5" CONCRETE SIDEWALK
- 3 - CONCRETE PLANTER, SEE SHEET D-4 FOR DETAILS**
- 4 - 3" HARDWOOD MULCH, SEE SHEET D-4 FOR DETAILS**
- 5 - 5" CONCRETE TERRACE
- 6 - EX. CONCRETE CURB & GUTTER TYPE 'A' TO REMAIN, REPLACEMENT LOCATIONS ARE IDENTIFIED ON SHEET P-1
- 7 - EX. FILL TO REMAIN
- 8 - EX. CONCRETE PAVEMENT TO REMAIN
- 9 - EX. BASE COURSE TO REMAIN

14038	MADISON, WI	9150	14038	D-2
TYPICAL SECTIONS		CONTRACT NO:		
302 N BASSETT ST				
M:\DESIGN\Projects\14038\CAD\Streets\14038EN-Details.dwg				
CITY OF MADISON WISCONSIN				
14038				
D-2				

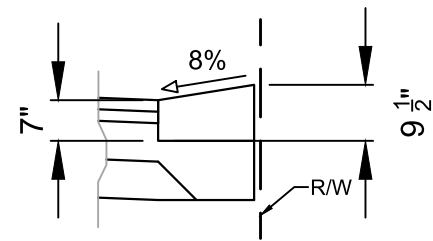


**TYPICAL SECTION
CONKLIN PL
(CURB CUT SECTION)**

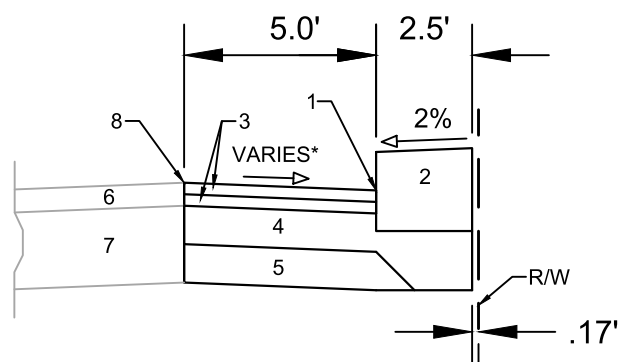
- 1 - POINT REFERRED TO ON PROFILE
- 2 - SPECIAL CONCRETE CURB & GUTTER**
- 3 - 1.75" ASPHALTIC PAVEMENT TYPE 4 LT 58-28 S
- 4 - 6" CRUSHED AGGREGATE BASE COURSE GRADATION 2
- 5 - 6" CRUSHED AGGREGATE BASE COURSE GRADATION 1
- 6 - EX. ASPHALTIC PAVEMENT TO REMAIN
- 7 - EX. BASE COURSE TO REMAIN
- 8 - SAWCUT LINE

SPECIAL NOTES:

- * SEE X-SHEET FOR CROSS SLOPES.
- ** SEE SPECIAL CUB CUT GEOMETRY DETAIL



**TYPICAL SECTION
SPECIAL CURB CUT
GEOMETRY DETAIL**

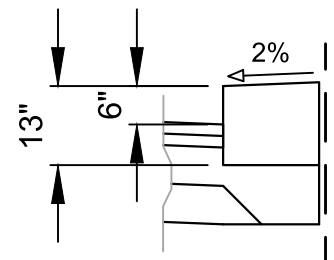


**TYPICAL SECTION
CONKLIN PL
(FULL CURB SECTION)**

- 1 - POINT REFERRED TO ON PROFILE
- 2 - SPECIAL CONCRETE CURB & GUTTER**
- 3 - 1.75" ASPHALTIC PAVEMENT TYPE 4 LT 58-28 S
- 4 - 6" CRUSHED AGGREGATE BASE COURSE GRADATION 2
- 5 - 6" CRUSHED AGGREGATE BASE COURSE GRADATION 1
- 6 - EX. ASPHALTIC PAVEMENT TO REMAIN
- 7 - EX. BASE COURSE TO REMAIN
- 8 - SAWCUT LINE

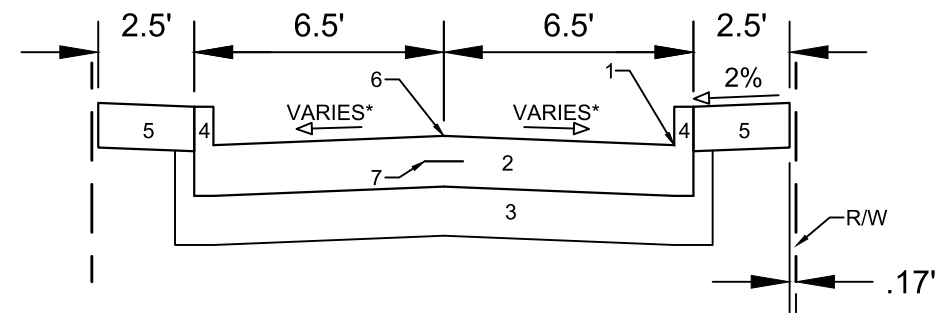
SPECIAL NOTES:

- * SEE X-SHEET FOR CROSS SLOPES.
- ** SEE SPECIAL CUB CUT GEOMETRY DETAIL



**TYPICAL SECTION
SPECIAL FULL CURB
GEOMETRY DETAIL**

REVISION #1 - 9/6/2023 - FBEG
1. SHEET ADDED.



**TYPICAL SECTION
CONKLIN PL
(CONCRETE PAVEMENT SECTION)**

SPECIAL NOTES:

- * SEE X-SHEET FOR CROSS SLOPES.
- ** CURB GEOMETRY SHALL MATCH TYPE 'A' CURB & GUTTER.
- *** SEE SHEET P-3 FOR LOCATION & ELEVATION AT JOINT INTERSECTIONS

- 1 - POINT REFERRED TO ON PROFILE
- 2 - 8" CONCRETE PAVEMENT
- 3 - 8" CRUSHED AGGREGATE BASE COURSE GRADATION 2
- 4 - 6" INTEGRAL CONCRETE CURB & GUTTER**
- 5 - 7" CONCRETE TERRACE
- 6 - LONGITUDINAL JOINT PER STANDARD SPECS.***
- 7 - TIE BARS PER S.D.D. 3.10

DATE	BY
REVISION	
Date: 9/6/2023 2:43 PM	Scale: 1:5
Designed By: D.S	14038
MARK	D-3

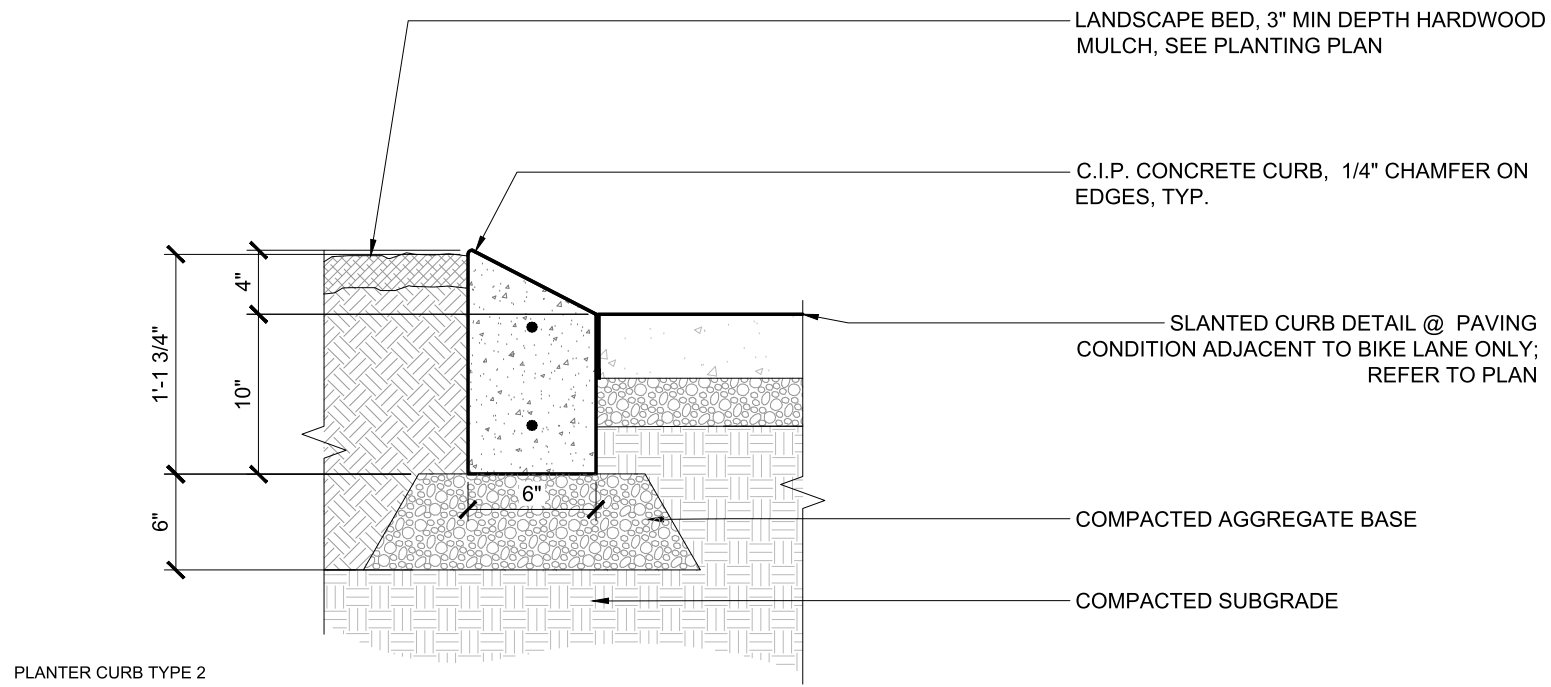
14038
MADISON, WI
9150
CONTRACT NO:

TYPICAL SECTIONS
302 N BASSETT ST
M:\DESIGN\Projects\14038\CAD\Streets\14038EN-Details.dwg

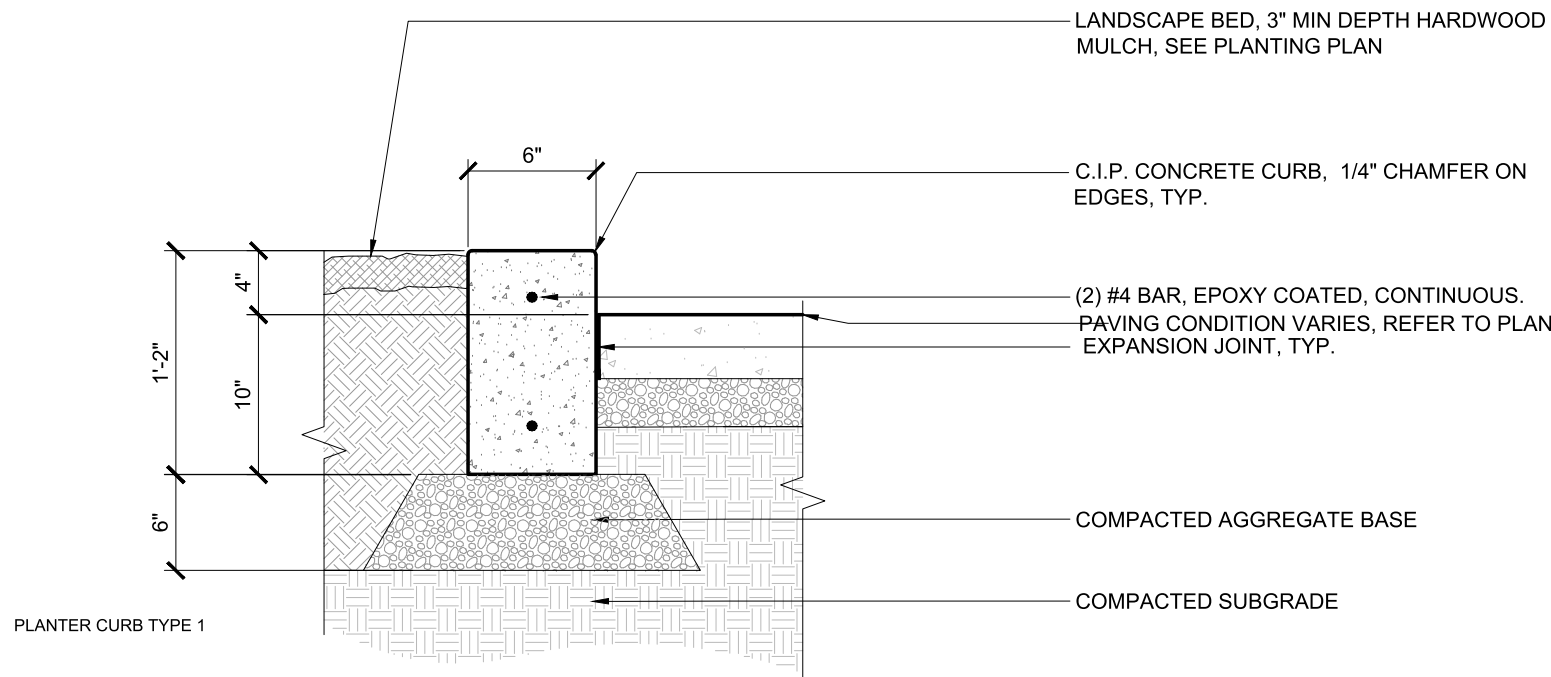


14038
D-3

REVISION #1 - 9/6/2023 - FBEG
 1. ADDED SHEET



PLANTER CURB TYPE 2



PLANTER CURB TYPE 1

○ CONCRETE PLANTER CURBS ALONG JOHNSON AND BASSETT
 1" = 1'-0"



I hereby certify that this plan, specification, or report was prepared by me or under my direct supervision and that I am a duly licensed landscape architect under the laws of the

State of Wisconsin
Jesse Symynkywicz
 Signature
 Jesse Symynkywicz
 Typed or Printed Name
 479-14 08/15/2023
 License # Date

GENERAL ELECTRICAL NOTES

1. ALL LOCATIONS ARE APPROXIMATE, THE TRAFFIC ENGINEER SHALL APPROVE FINAL LOCATIONS, INCLUDING SETBACK IN THE FIELD, AFTER CONTRACTOR SURVEYS STAKING. THE CONTRACTOR SHALL NOTIFY GRETCHEN AVILES PINEIRO (GAVILESPINEIRO@CITYOFMADISON.COM), AT LEAST 24HOURS IN ADVANCE OF NEEDING BASE LOCATIONS MARKED.
2. BASES INSTALLED IN TERRACE SHALL BE 4' FROM FACE OF CURB UNLESS OTHERWISE NOTED, SUBJECT TO NOTE 1 ABOVE.
3. THE CONTRACTOR SHALL DO ALL WORK IN ACCORDANCE WITH "CITY OF MADISON STANDARD SPECIFICATIONS FOR PUBLIC WORKS CONSTRUCTION, LATEST EDITION" AND ADDENDUMS THERETO.
cityofmadison.com/engineering/documents/standard-specifications/CompleteSpecBook.pdf
4. THE CONTRACTOR SHALL CALL TROY VANT (395-1975) AT THE TRAFFIC ENGINEERING SHOP AT LEAST 24-HOURS IN ADVANCE OF POURING BASES OR BURYING CONDUIT TO ARRANGE FOR INSPECTION. ANY WORK COMPLETED WITHOUT INSPECTION IS SUBJECT TO REJECTION.
5. THE CONTRACTOR SHALL CALL TROY VANT (395-1975) PRIOR TO REMOVING OR CONNECTING TO EXISTING CONDUITS OR HANDHOLES. ANY CONDUITS OR HANDHOLES REMOVED OR DAMAGED SHALL BE REPLACED WITH SIZE/TYPE SPECIFIED BY ENGINEER (GAVILESPINEIRO@CITYOFMADISON.COM).
6. PROVIDE TEMPORARY LIGHTING WHEN REMOVING SL 8545 AND SL 8246 UNTIL NEW PERMANENT LIGHTING IS INSTALLED AND OPERATIONAL. TEMPORARY FIXTURE SHALL BE 400W HPS EQUIVALENT.
7. THE CONTRACTOR SHALL ARRANGE FOR PICKUP OF THE FOLLOWING CITY MATERIALS:

3/4" X 24" ANCHOR BOLTS:	1 SET OF 4 FOR LB-1 BASE
1" X 40" ANCHOR BOLTS:	2 SET OF 4 FOR LB-3R BASE

SL8245
INSTALL LB-3R BASE
CONNECT TO EXISTING 2" SL CONDUIT
STA: 10+80 OFF: 7.15 R

REMOVE EXISTING BASE
CONNECT 2" SL CONDUIT

SL8246
INSTALL LB-3R BASE
CONNECT TO EXISTING 2" SL CONDUIT
STA: 11+64 OFF: 8.23 R

REMOVE EXISTING BASE
CONNECT 2" SL CONDUIT

P 864
INSTALL LB-1 BASE
2" CONDUIT TO EXISTING HH
STA: 12+94 OFF: 15.86 L

MAINTAIN FIBER OPTIC CONDUIT &
CABLE DURING CONSTRUCTION

REVISED 9/6/2023 - GMA
1. SHEET ADDED.

ADJUST EXISTING TE HANDHOLE WITH
LOOP CONDUITS AND WIRE IF
NECESSARY.

W JOHNSON ST

N BASSETT ST

MARK	REVISION	DATE	BY
	SHEET ADDED	8-8-2023	GMA
Designed By: GMA			Date: 8/18/2023 12:41 PM
Scale: 1" = 30'			14038

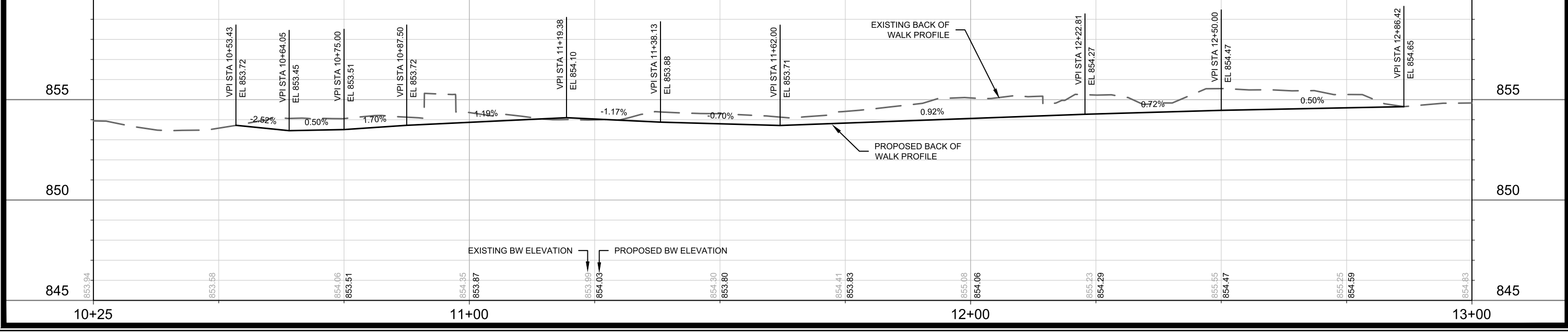
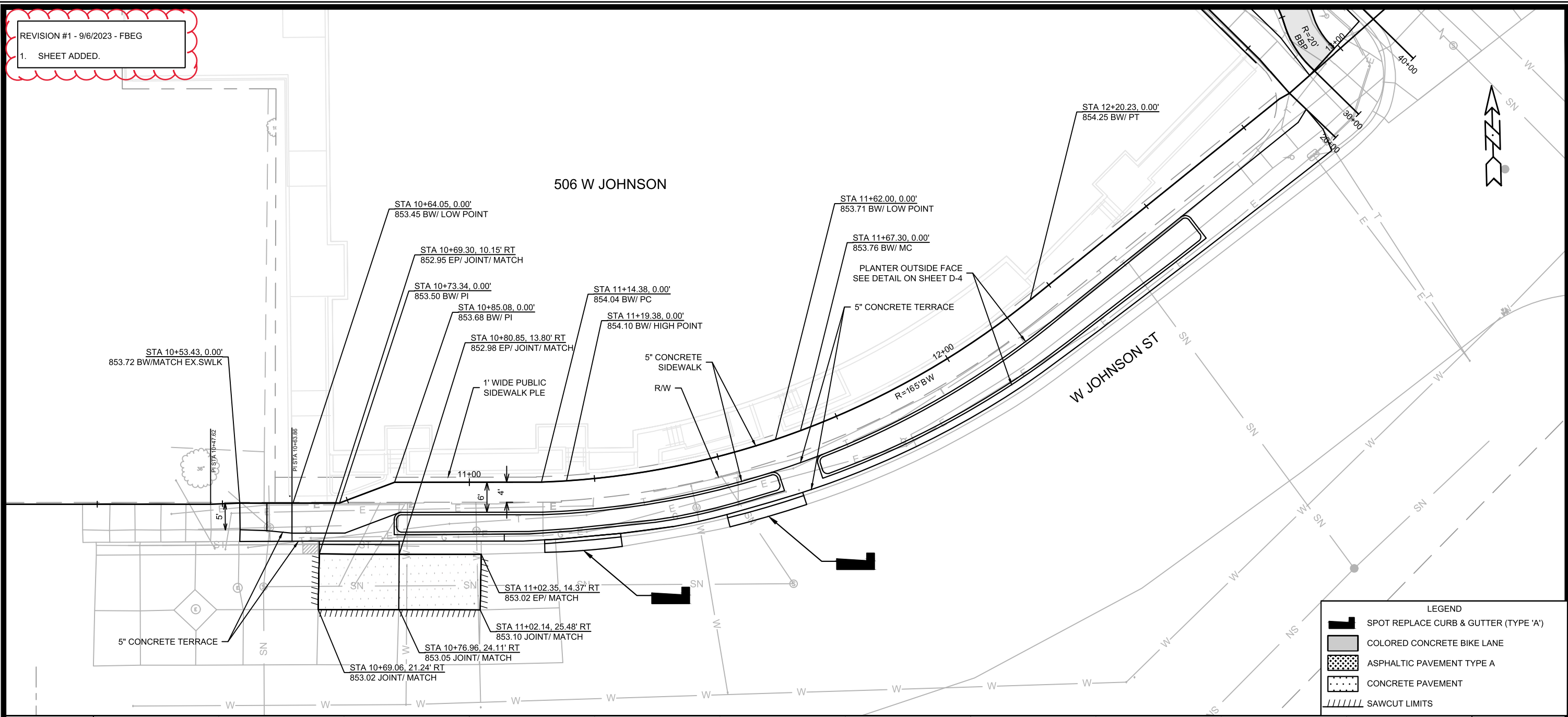
14038
MADISON, WI
9150
CONTRACT NO:

ELECTRICAL PLAN
302 N BASSETT ST
M:\DESIGN\Projects\14038\CAD\Traffic\14038TE-Electrical.dwg



14038
E-1

REVISION #1 - 9/6/2023 - FBEG
 1. SHEET ADDED.



LEGEND

- SPOT REPLACE CURB & GUTTER (TYPE 'A')
- COLORED CONCRETE BIKE LANE
- ASPHALTIC PAVEMENT TYPE A
- CONCRETE PAVEMENT
- SAWCUT LIMITS

14038	MADISON, WI	9150
CONTRACT NO:		
PLAN & PROFILE- W JOHNSON ST		
302 N BASSETT ST		
M:\DESIGN\Projects\14038\CAD\Streets\14038EN-PnP.dwg		
14038		
P-1		

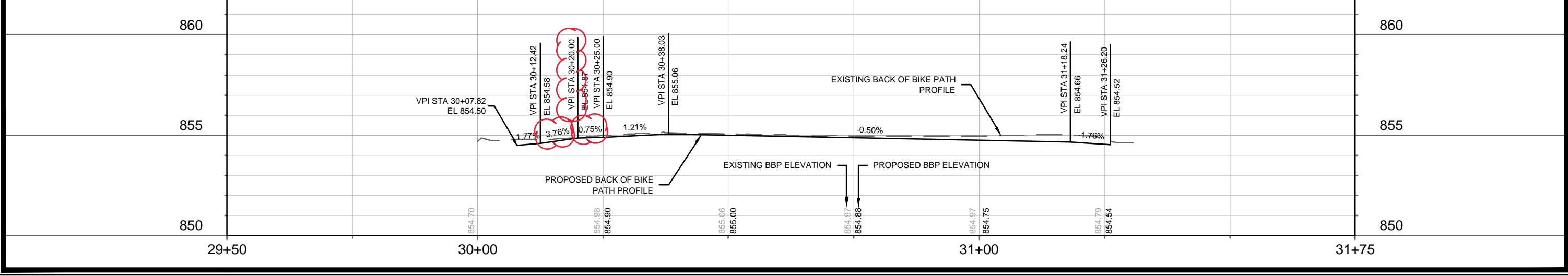
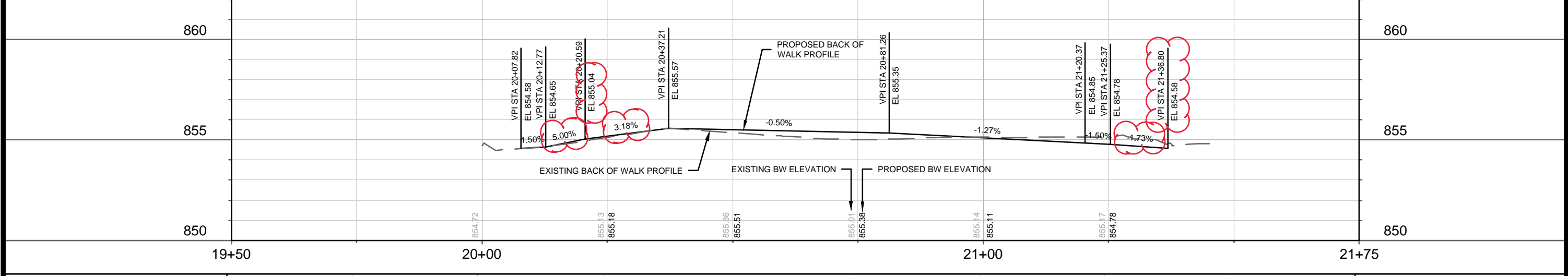
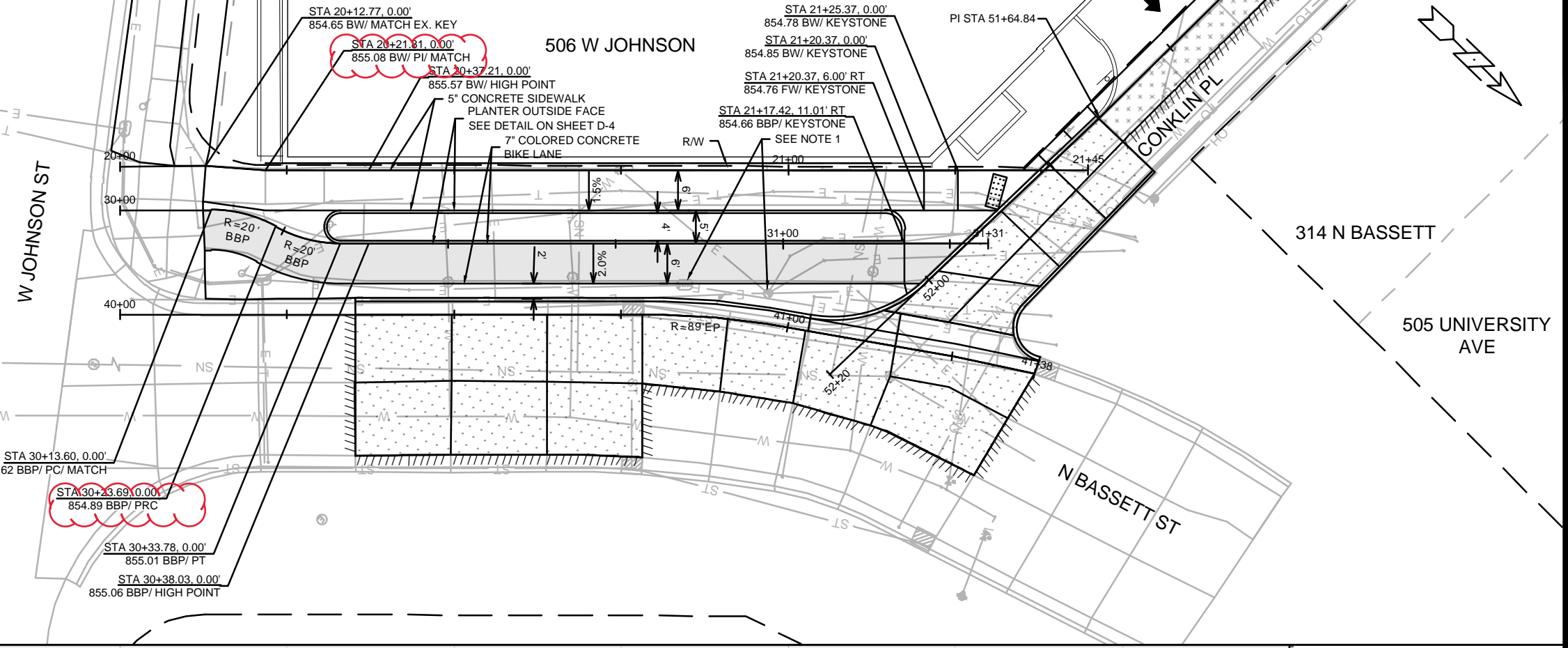
REVISION #1 - 9/6/2023 - FBEG
1. SHEET ADDED.

REVISION #3 - 12/15/2023 - FBEG
1. ADJUSTED SIDEWALK AND PATH GRADES

NOTES
1. ADJUSTMENT OF MANHOLE AND HANDHOLE LIDS SHALL BE COORDINATED BY THE DEVELOPER WITH THE UTILITY OWNER.

LEGEND

- SPOT REPLACE CURB & GUTTER (TYPE 'A')
- COLORED CONCRETE BIKE LANE
- ASPHALTIC PAVEMENT TYPE A
- CONCRETE PAVEMENT
- SAWCUT LIMITS



MARK	REVISION	DATE	BY

14038
MADISON, WI
9150
CONTRACT NO:





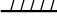
PLAN & PROFILE- N BASSETT ST (SIDEWALK & BIKE LANE)
302 N BASSETT ST
M:\DESIGN\Projects\14038\CAD\Streets\14038EN-PnP.dwg

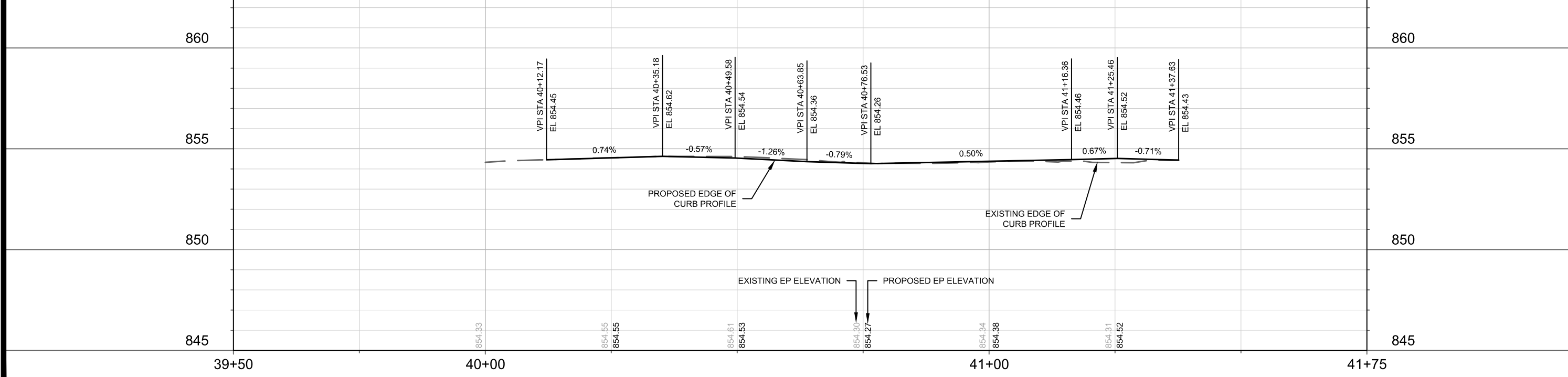
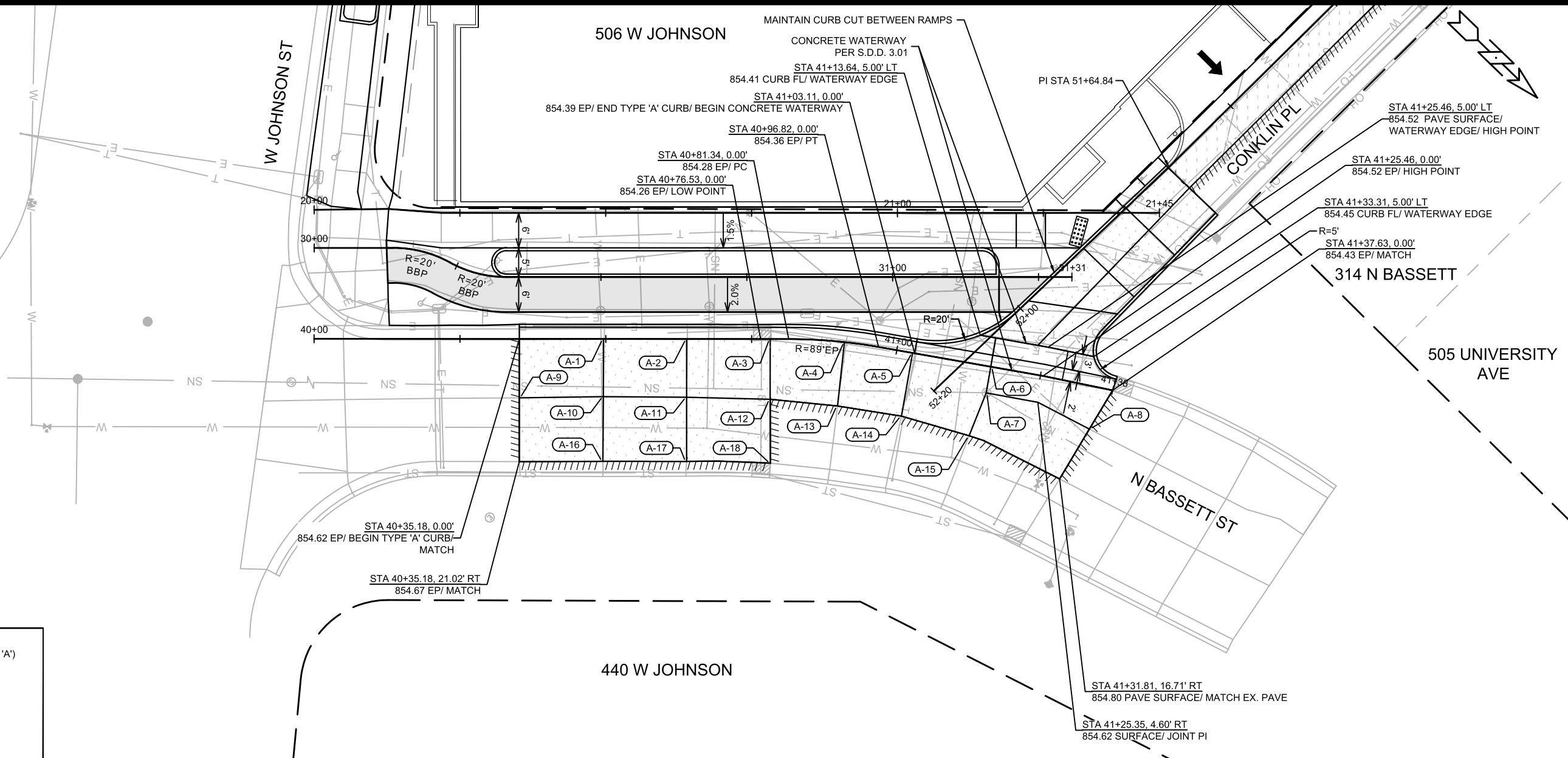
14038
P-2A

CONCRETE JOINTS TABLE		
POINT	STATION AND OFFSET	ELEVATION
A-1	40+49.58, 0.00	854.54
A-2	40+63.85, 0.00	854.37
A-3	40+78.17, 0.00	854.27
A-4	40+90.91, 0.00	854.33
A-5	41+02.74, 0.00	854.39
A-6	41+16.36, 0.00	854.46
A-7	41+16.36, 4.55RT	854.56
A-8	41+35.06, 7.30RT	854.62
A-9	40+35.18, 10.10RT	854.79
A-10	40+49.58, 9.88RT	854.79
A-11	40+63.85, 9.98RT	854.67
A-12	40+78.17, 10.32RT	854.59
A-13	40+90.91, 11.01RT	854.64
A-14	41+02.74, 11.00RT	854.69
A-15	41+14.74, 12.30RT	854.72
A-16	40+49.50, 20.97RT	854.66
A-17	40+63.85, 20.97RT	854.53
A-18	40+78.23, 21.27RT	854.50

REVISION #1 - 9/6/2023 - FBEG
 1. SHEET ADDED.

LEGEND

-  SPOT REPLACE CURB & GUTTER (TYPE 'A')
-  COLORED CONCRETE BIKE LANE
-  ASPHALTIC PAVEMENT TYPE A
-  CONCRETE PAVEMENT
-  SAWCUT LIMITS



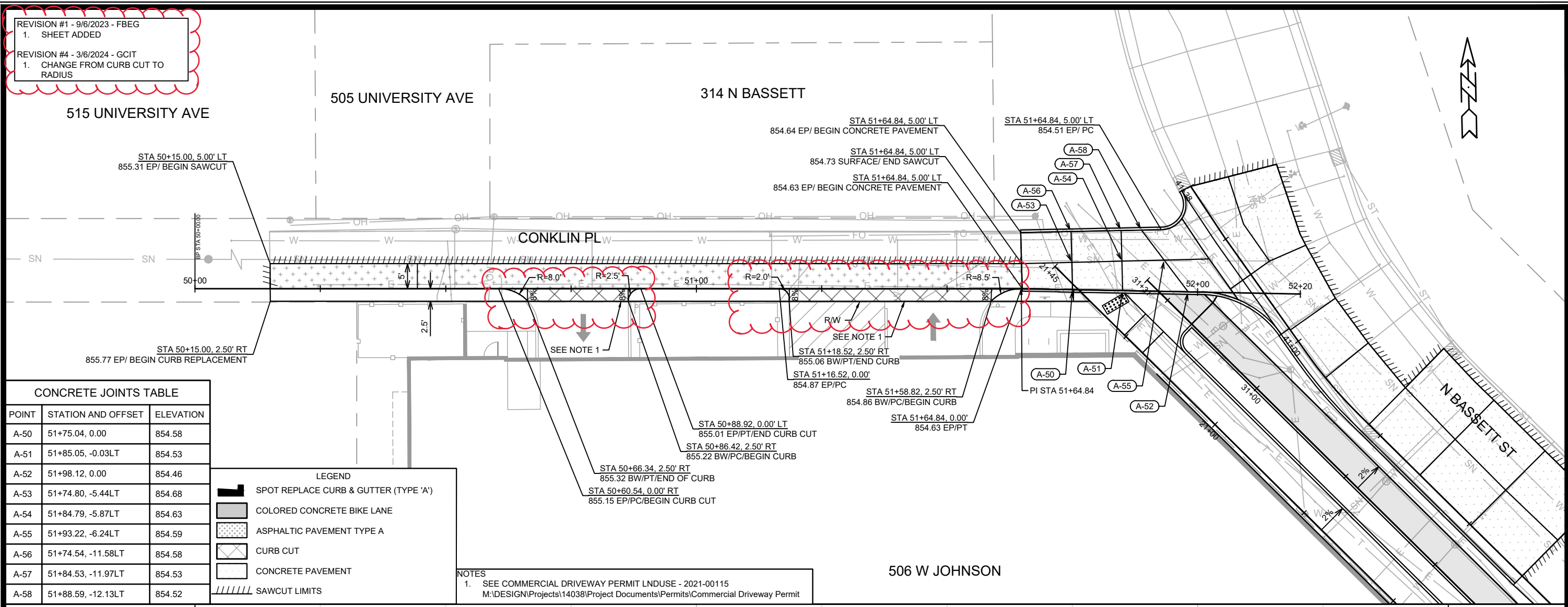
14038
 MADISON, WI
 CONTRACT NO: 9150
 PLAN & PROFILE- N BASSETT ST (CURB)
 302 N BASSETT ST
 M:\DESIGN\Projects\14038\CAD\Streets\14038EN-PnP.dwg
 14038
 P-2B

MARK	REVISION	DATE	BY

Scale: 1"=20'
 Designed By: FBEG Date: 9/6/2023 2:40 PM
 14038

REVISION #1 - 9/6/2023 - FBEG
 1. SHEET ADDED

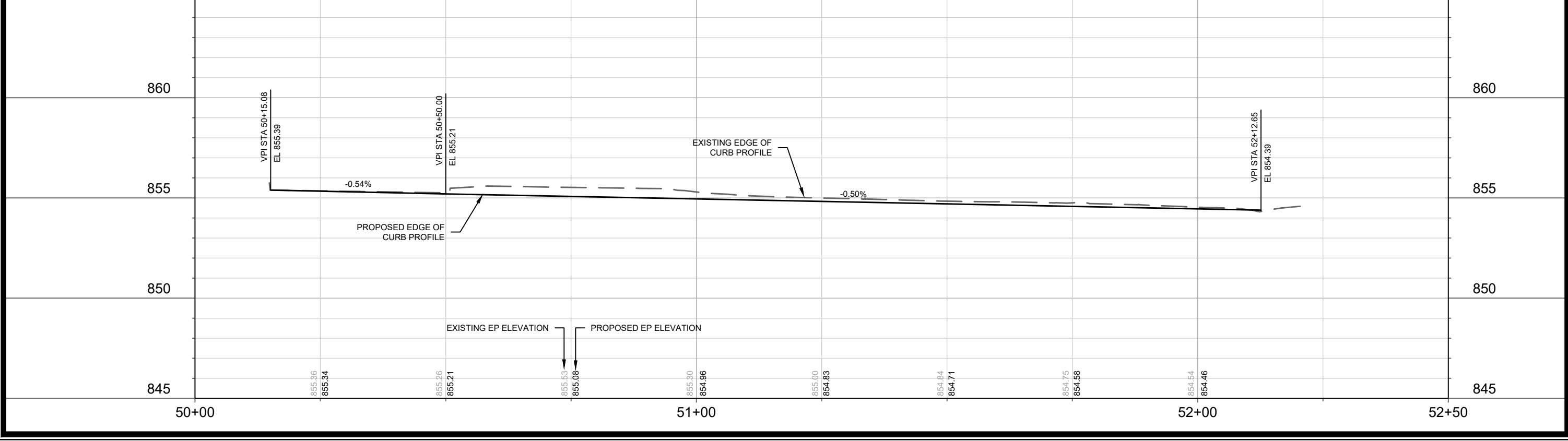
REVISION #4 - 3/6/2024 - GCIT
 1. CHANGE FROM CURB CUT TO RADIUS



POINT	STATION AND OFFSET	ELEVATION
A-50	51+75.04, 0.00	854.58
A-51	51+85.05, -0.03LT	854.53
A-52	51+98.12, 0.00	854.46
A-53	51+74.80, -5.44LT	854.68
A-54	51+84.79, -5.87LT	854.63
A-55	51+93.22, -6.24LT	854.59
A-56	51+74.54, -11.58LT	854.58
A-57	51+84.53, -11.97LT	854.53
A-58	51+88.59, -12.13LT	854.52

LEGEND	
	SPOT REPLACE CURB & GUTTER (TYPE 'A')
	COLORED CONCRETE BIKE LANE
	ASPHALTIC PAVEMENT TYPE A
	CURB CUT
	CONCRETE PAVEMENT
	SAWCUT LIMITS

NOTES
 1. SEE COMMERCIAL DRIVEWAY PERMIT LNDUSE - 2021-00115
 M:\DESIGN\Projects\14038\Project Documents\Permits\Commercial Driveway Permit



DATE	BY
REVISION	BY
DESIGNED BY: D.S	DATE: 3/6/2024 3:36 PM
SCALE: 1"=20'	
MARK	14038

14038
 MADISON, WI
 9150
 CONTRACT NO:

PLAN & PROFILE - CONKLIN PL
 302 N BASSETT ST

M:\DESIGN\Projects\14038\CAD\Streets\14038EN-PrP - 02 22 24.dwg

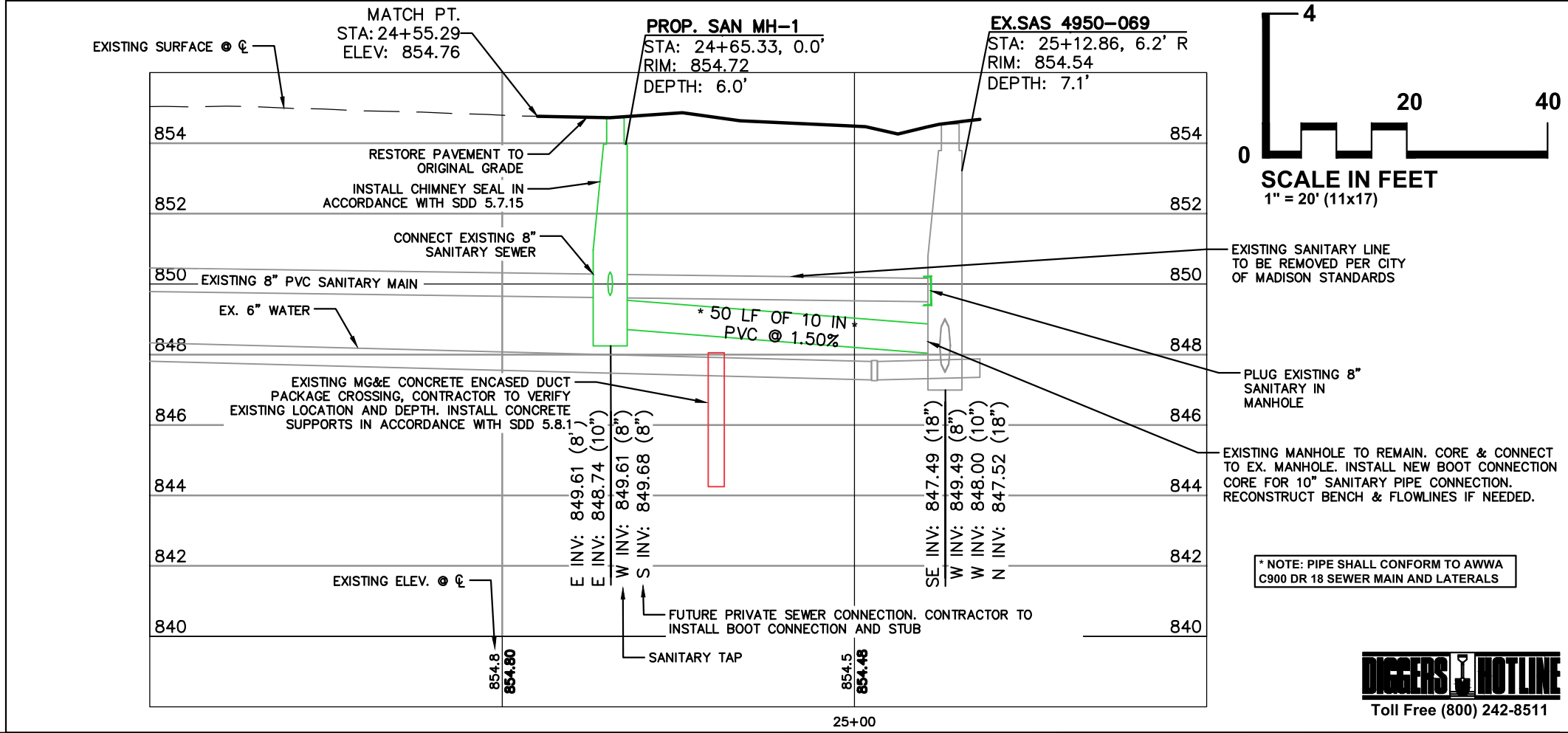
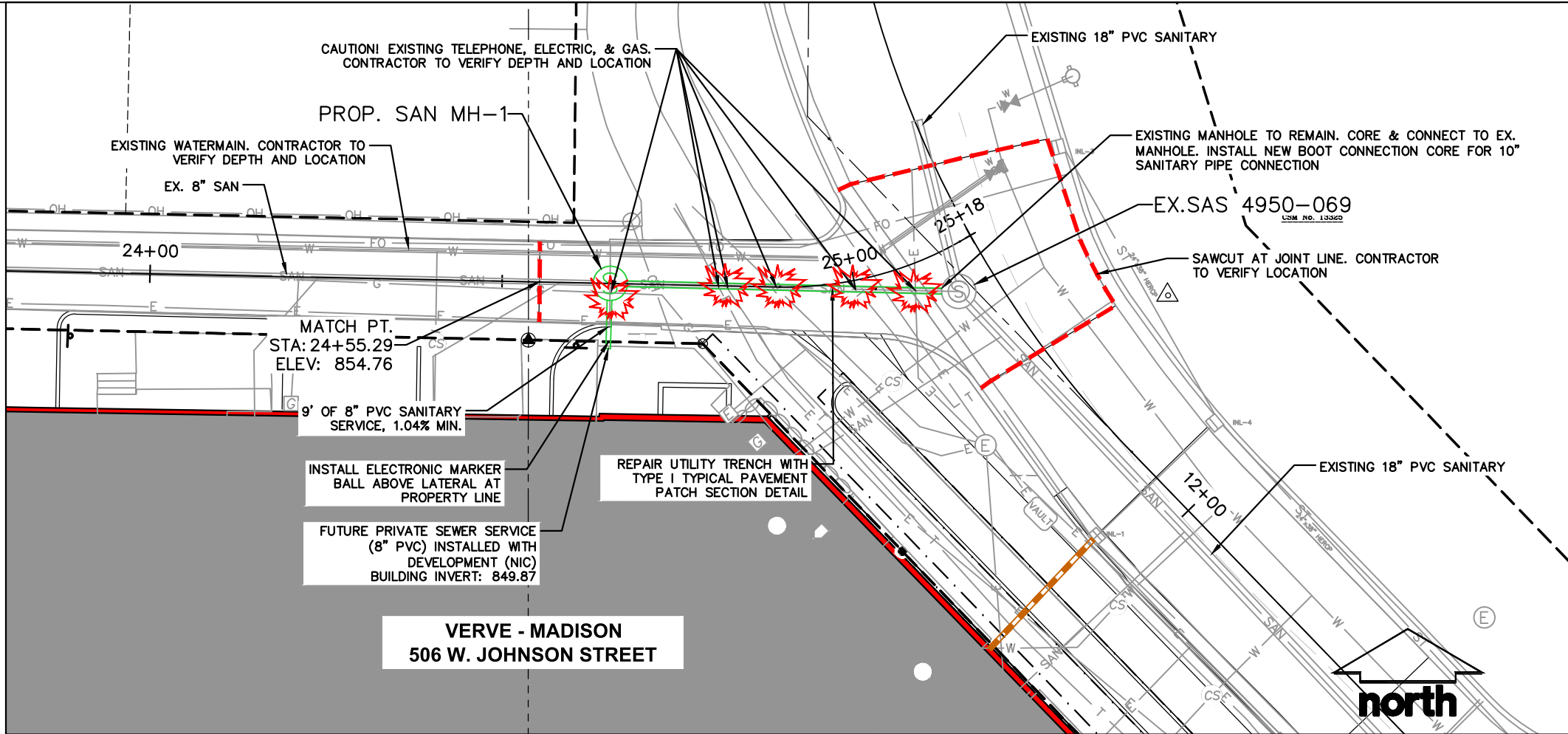
14038
 P-3

LEGEND

	PROPERTY LINE
	EDGE OF PAVEMENT
	STANDARD CURB AND GUTTER
	ASPHALT PAVEMENT
	CONCRETE PAVEMENT
	SANITARY SEWER
	WATERMAIN
	STORM SEWER
	INSULATION
	SAWCUT EXISTING PAVEMENT

- GENERAL NOTES**
1. THE DEVELOPER SHALL REPLACE ALL CURB & GUTTER AND SIDEWALK THAT IS DAMAGED OR DETERMINED TO BE IN UNSATISFACTORY CONDITION, REGARDLESS OF WHETHER THE DAMAGE EXISTED PRIOR TO CONSTRUCTION.
 2. PAVEMENT SAWCUTS AND FINAL PAVEMENT PATCHING LIMITS SHALL BE AS DIRECTED BY THE CITY CONSTRUCTION ENGINEER. SAWCUTS AND LIMITS SHOWN ON THE PLAN ARE BASED ON ANTICIPATED DISTURBANCE AND THE PATCHING CRITERIA BUT SHALL BE CONSIDERED APPROXIMATE. ALL PAVEMENT PATCHING SHALL BE PER THE CITY'S PATCHING CRITERIA.
 3. OBTAIN A PRINT OUT OF THE ALIGNMENT FROM THE CITY ENGINEER PRIOR TO STAKING THIS PROJECT.

- UTILITY NOTES**
1. POWER POLES AND OTHER OBSTRUCTIONS SHALL BE MOVED TO PROVIDE 2 FEET MINIMUM OF CLEAR DISTANCE FROM ANY FACE OF CURB OR EDGE OF SIDEWALK.
 2. THERE MAY BE EXISTING UTILITIES OR OTHER FEATURES WHICH ARE EITHER NOT SHOWN OR SHOWN INCORRECTLY ON THIS PLAN. IT IS THE RESPONSIBILITY OF THE DEVELOPER TO LOCATE AND IDENTIFY ALL UTILITIES AND TOPOGRAPHY WHICH MAY AFFECT THE CONSTRUCTION OF THESE IMPROVEMENTS.
 3. RELOCATION OR ADJUSTING OF PRIVATE UTILITY FACILITIES, SUCH AS POLES, PEDESTALS, BOXES, STRUCTURES, CASTINGS OR HANDHOLES, SHALL BE COORDINATED WITH PRIVATE UTILITY COMPANIES.
 4. DEVELOPER MUST SUBMIT TRAFFIC CONTROL PLAN TO CITY TRAFFIC ENGINEER AT LEAST 14 DAYS PRIOR TO THE START OF WORK. WORK SHALL NOT PROCEED UNTIL AN APPROVED TRAFFIC CONTROL PLAN IS IN PLACE.



NOTE: BYPASS PUMPING SHALL BE PROVIDED BY THE CONTRACTOR PER CITY OF MADISON STANDARD SPECIFICATIONS & REQUIREMENTS.

* NOTE: PIPE SHALL CONFORM TO AWWA C900 DR 18 SEWER MAIN AND LATERALS

DIGGERS HOTLINE
Toll Free (800) 242-8511



CREATE THE VISION TELL THE STORY

jsdinc.com

MADISON REGIONAL OFFICE
161 HORIZON DRIVE, SUITE 101
VERONA, WISCONSIN 53593
P. 608.848.5060

CLIENT:
SUBTEXT LIVING

CLIENT ADDRESS:
3000 LOCUST STREET
ST. LOUIS, MO 63103

PROJECT:
**VERVE - MADISON
PUBLIC SANITARY
SEWER IMPROVEMENTS**
PROJECT NO. 14038
CONTRACT NO. 9150

PROJECT LOCATION:
506 W. JOHNSON ST.
MADISON, WISCONSIN
DANE COUNTY

PLAN MODIFICATIONS:

#	Date	Description
1	04.04.22	CITY REVIEW SET
2	05.05.22	PERMIT SET
3	11.15.22	ISSUED FOR CONSTRUCTION
4		
5		
6		
7		
8		
9		
10		
11		
12		
13		
14		
15		

Designed By:
Reviewed By:
Approved By:
**SHEET TITLE:
SANITARY PLAN AND
PROFILE**

SHEET NUMBER:
U-1

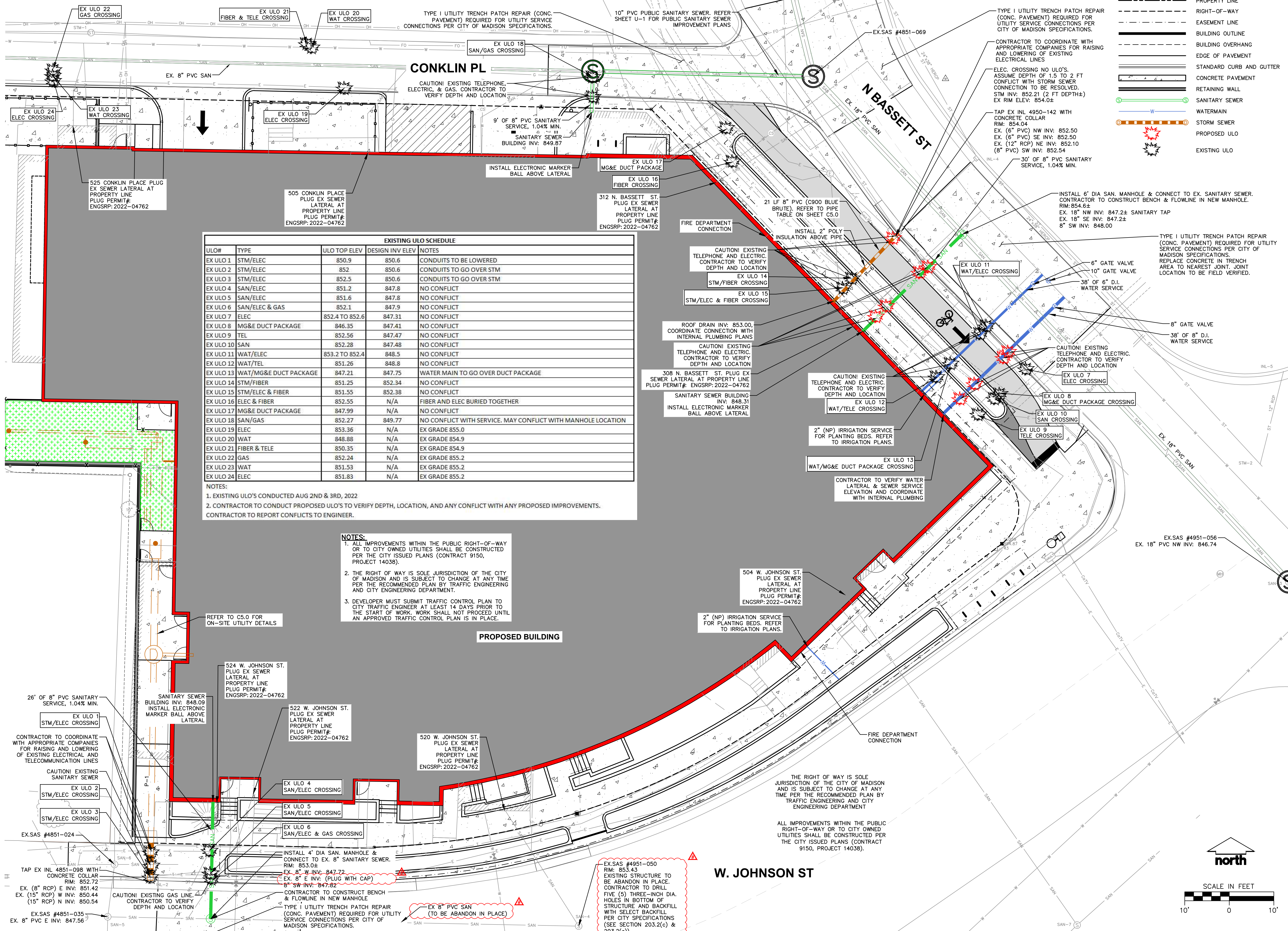
File: I:\2020\0102\0102\DWG\Civil Sheets\Public Plans\2010219 Public Con Desc.dwg Layout: U-1 User: mhaase Plotted: Nov 15, 2022 8:43am Xref:

THESE PLANS AND DESIGNS ARE COPYRIGHT PROTECTED AND MAY NOT BE USED IN WHOLE OR IN PART WITHOUT THE WRITTEN CONSENT OF JSD PROFESSIONAL SERVICES, INC.



LEGEND

	PROPERTY LINE
	RIGHT-OF-WAY
	EASEMENT LINE
	BUILDING OUTLINE
	BUILDING OVERHANG
	EDGE OF PAVEMENT
	STANDARD CURB AND GUTTER
	CONCRETE PAVEMENT
	RETAINING WALL
	SANITARY SEWER
	WATERMAIN
	STORM SEWER
	PROPOSED ULO
	EXISTING ULO



EXISTING ULO SCHEDULE

ULO#	TYPE	ULO TOP ELEV	DESIGN INV ELEV	NOTES
EX ULO 1	STM/ELEC	850.9	850.6	CONDUITS TO BE LOWERED
EX ULO 2	STM/ELEC	852	850.6	CONDUITS TO GO OVER STM
EX ULO 3	STM/ELEC	852.5	850.6	CONDUITS TO GO OVER STM
EX ULO 4	SAN/ELEC	851.2	847.8	NO CONFLICT
EX ULO 5	SAN/ELEC	851.6	847.8	NO CONFLICT
EX ULO 6	SAN/ELEC & GAS	852.1	847.9	NO CONFLICT
EX ULO 7	ELEC	852.4 TO 852.6	847.31	NO CONFLICT
EX ULO 8	MG&E DUCT PACKAGE	846.35	847.41	NO CONFLICT
EX ULO 9	TEL	852.56	847.47	NO CONFLICT
EX ULO 10	SAN	852.28	847.48	NO CONFLICT
EX ULO 11	WAT/ELEC	853.2 TO 852.4	848.5	NO CONFLICT
EX ULO 12	WAT/TEL	851.26	848.8	NO CONFLICT
EX ULO 13	WAT/MG&E DUCT PACKAGE	847.21	847.75	WATER MAIN TO GO OVER DUCT PACKAGE
EX ULO 14	STM/FIBER	851.25	852.34	NO CONFLICT
EX ULO 15	STM/ELEC & FIBER	851.55	852.38	NO CONFLICT
EX ULO 16	ELEC & FIBER	852.55	N/A	FIBER AND ELEC BURIED TOGETHER
EX ULO 17	MG&E DUCT PACKAGE	847.99	N/A	NO CONFLICT
EX ULO 18	SAN/GAS	852.27	849.77	NO CONFLICT WITH SERVICE. MAY CONFLICT WITH MANHOLE LOCATION
EX ULO 19	ELEC	853.36	N/A	EX GRADE 855.0
EX ULO 20	WAT	848.88	N/A	EX GRADE 854.9
EX ULO 21	FIBER & TELE	850.35	N/A	EX GRADE 854.9
EX ULO 22	GAS	852.24	N/A	EX GRADE 855.2
EX ULO 23	WAT	851.53	N/A	EX GRADE 855.2
EX ULO 24	ELEC	851.83	N/A	EX GRADE 855.2

NOTES:
 1. EXISTING ULO'S CONDUCTED AUG 2ND & 3RD, 2022
 2. CONTRACTOR TO CONDUCT PROPOSED ULO'S TO VERIFY DEPTH, LOCATION, AND ANY CONFLICT WITH ANY PROPOSED IMPROVEMENTS. CONTRACTOR TO REPORT CONFLICTS TO ENGINEER.

NOTES:
 1. ALL IMPROVEMENTS WITHIN THE PUBLIC RIGHT-OF-WAY OR TO CITY OWNED UTILITIES SHALL BE CONSTRUCTED PER THE CITY ISSUED PLANS (CONTRACT 9150, PROJECT 14038).
 2. THE RIGHT OF WAY IS SOLE JURISDICTION OF THE CITY OF MADISON AND IS SUBJECT TO CHANGE AT ANY TIME PER THE RECOMMENDED PLAN BY TRAFFIC ENGINEERING AND CITY ENGINEERING DEPARTMENT.
 3. DEVELOPER MUST SUBMIT TRAFFIC CONTROL PLAN TO CITY TRAFFIC ENGINEER AT LEAST 14 DAYS PRIOR TO THE START OF WORK. WORK SHALL NOT PROCEED UNTIL AN APPROVED TRAFFIC CONTROL PLAN IS IN PLACE.

PROPOSED BUILDING

CONSTRUCTION DOCUMENT SET
 11/11/2022

ORIGINAL ISSUE: 9/9/22

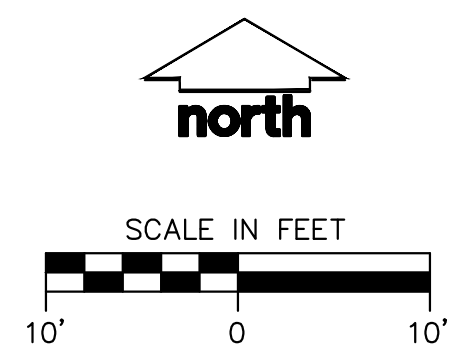
REVISIONS

No.	Description	Date
1	CD SET	11/11/2022
2	ASI #1	3/10/2023
3	ASI #2	6/30/2023

221532
 PROJECT NUMBER
 CAC MRH
 DRAWN BY CHECKED BY

Verve Madison
 UTILITY PLAN - PUBLIC

C5.1



2/10/2022 4:34:30 PM

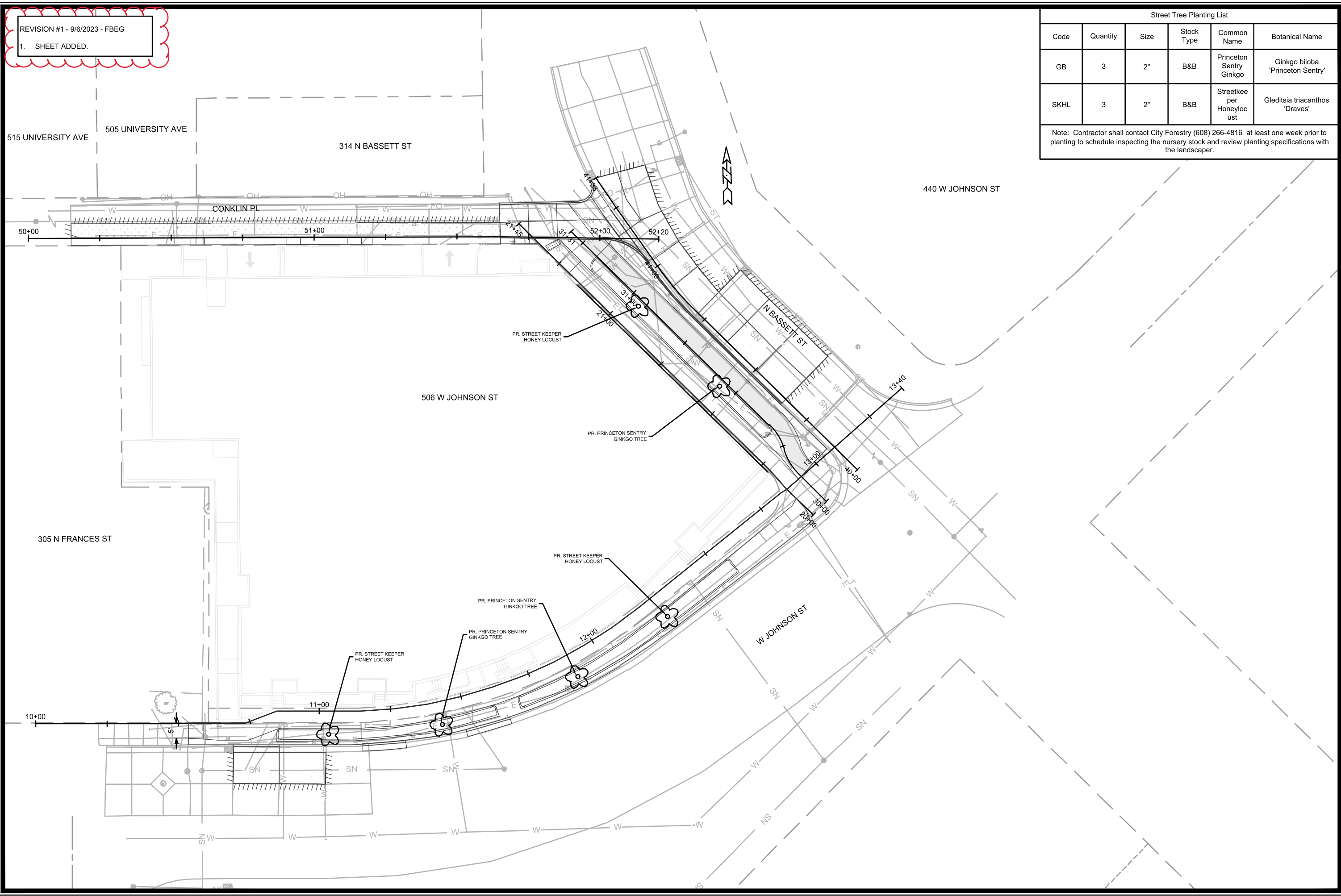
REVISION #1 - 9/6/2023 - FBEG

1. SHEET ADDED.

Street Tree Planting List

Code	Quantity	Size	Stock Type	Common Name	Botanical Name
GB	3	2"	B&B	Princeton Sentry Ginkgo	Ginkgo biloba 'Princeton Sentry'
SKHL	3	2"	B&B	Streetkee per Honeylocust	Gleditsia triacanthos 'Draves'

Note: Contractor shall contact City Forestry (608) 266-4816 at least one week prior to planting to schedule inspecting the nursery stock and review planting specifications with the landscaper.



MARK	REVISION	DATE	BY
14038	FBEG	9/6/2023 2:36 PM	L-1

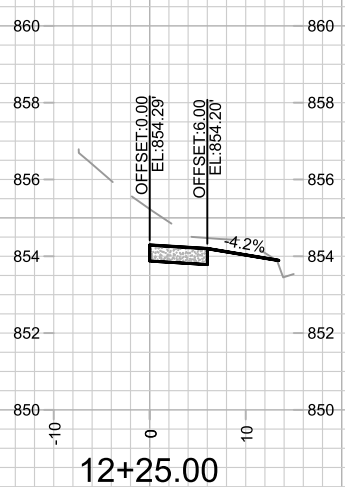
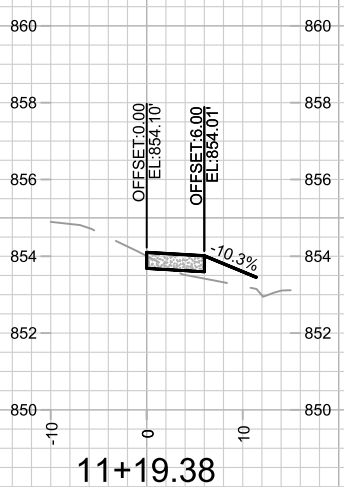
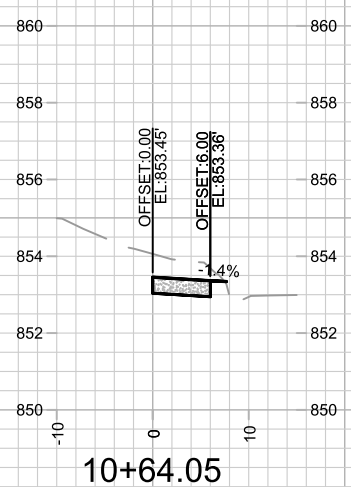
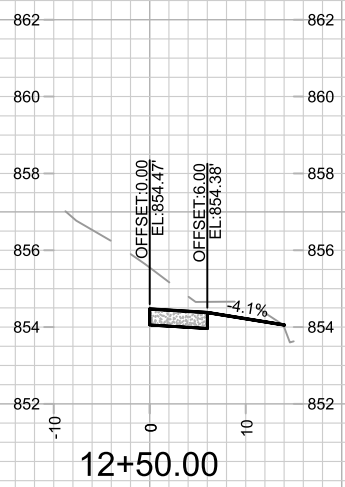
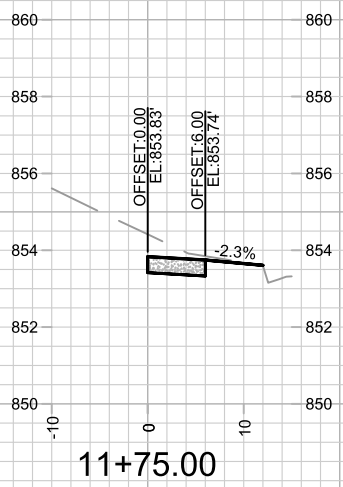
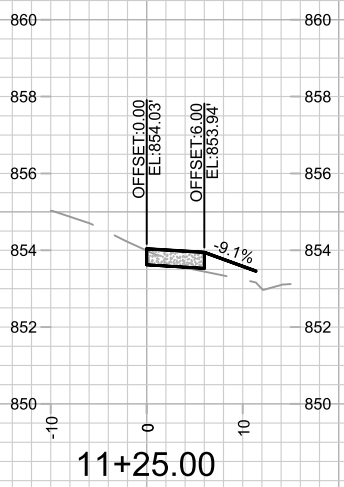
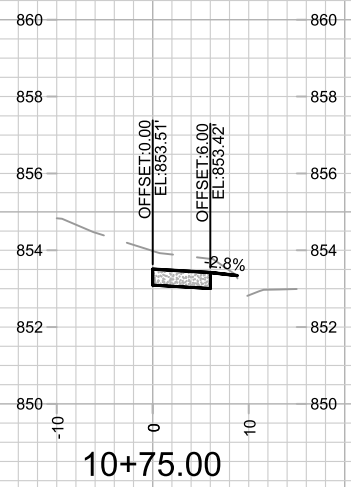
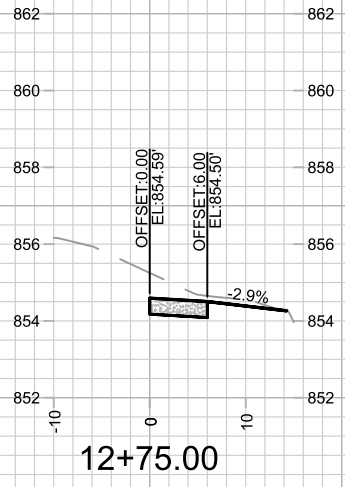
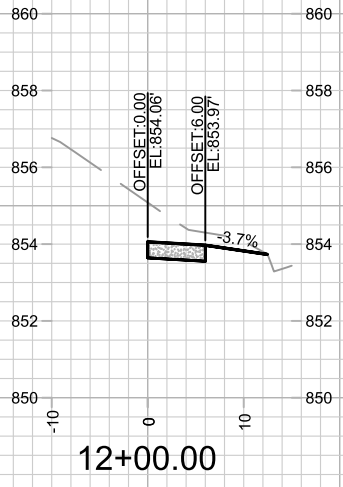
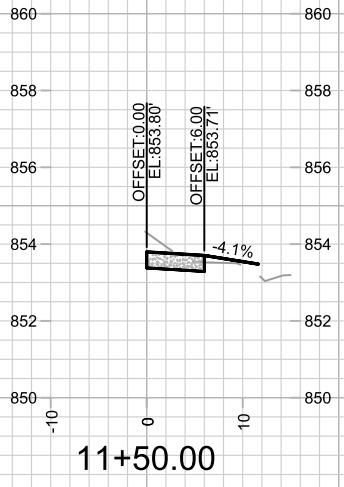
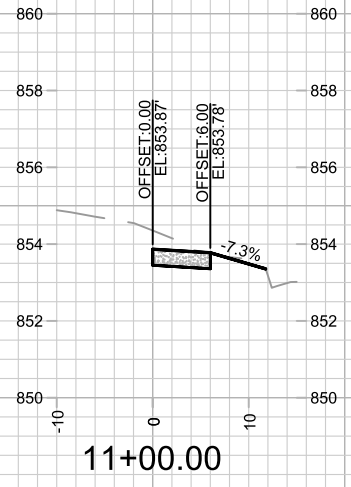
14038
 MADISON, WI
 CONTRACT NO: 9150

LANDSCAPING PLAN
 302 N BASSETT ST
 M:\DESIGN\Projects\14038\CAD\Streets\14038EN-LandscapingPlan.dwg



14038
 L-1

REVISION #1 - 9/6/2023 - FBEG
 1. SHEET ADDED.



MARK	REVISION	DATE	BY

14038
 MADISON, WI
 9150
 CONTRACT NO:

CROSS SECTIONS - W JOHNSON ST
 302 N BASSETT ST
 M:\DESIGN\Projects\14038\CAD\Streets\14038EN-Xsections.dwg



14038
 X-1

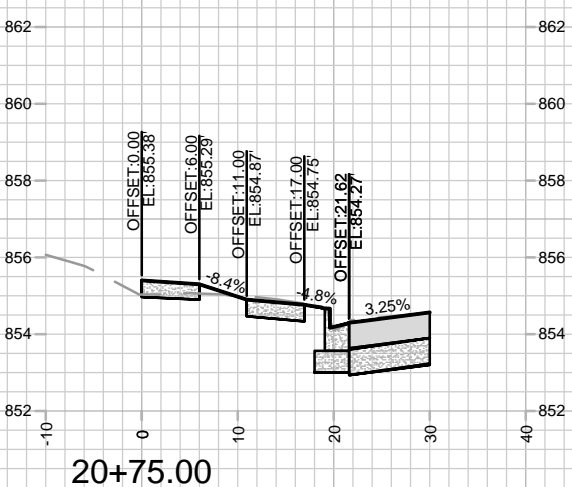
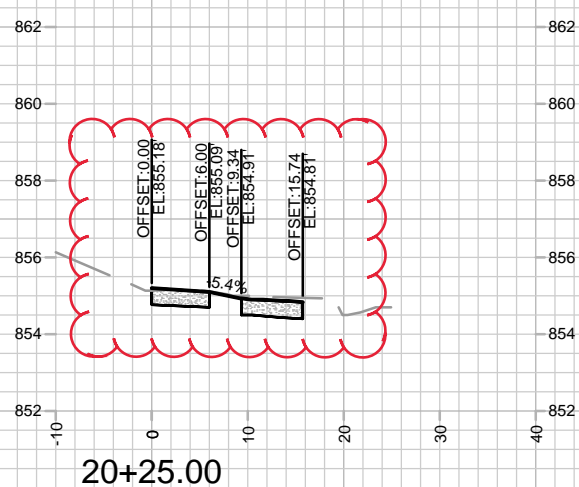
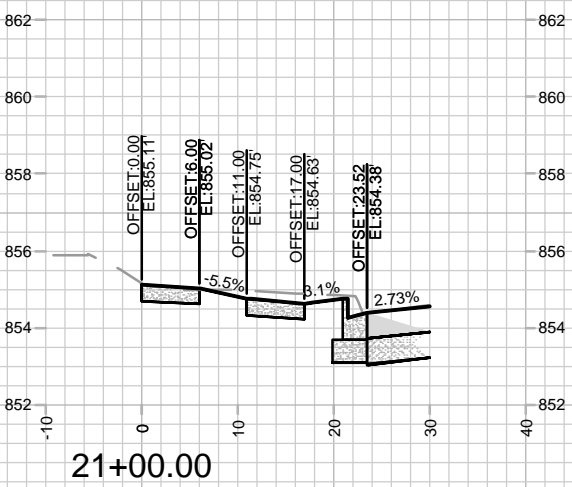
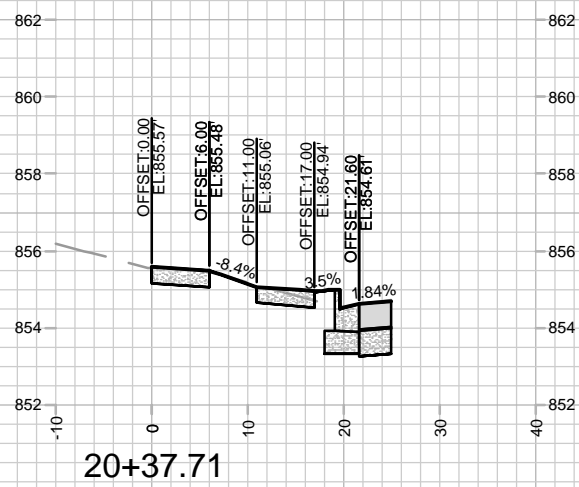
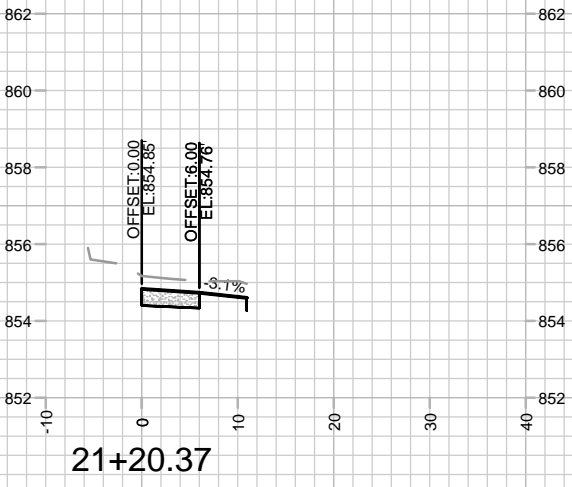
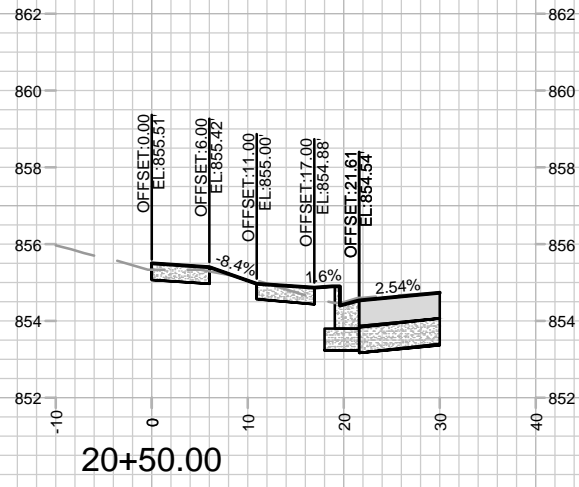
Scale: #####
 14038
 X-1

REVISION #1 - 9/6/2023 - FBEG

1. SHEET ADDED.

REVISION #3 - 12/15/2023 - FBEG

1. ADJUSTED SIDEWALK AND PATH GRADES



MARK	REVISION	DATE	BY
14038			
Designed By: FBEG	Date: 12/15/2023	3:34 PM	Scale: #####
			X-2

14038
MADISON, WI
9150
CONTRACT NO:

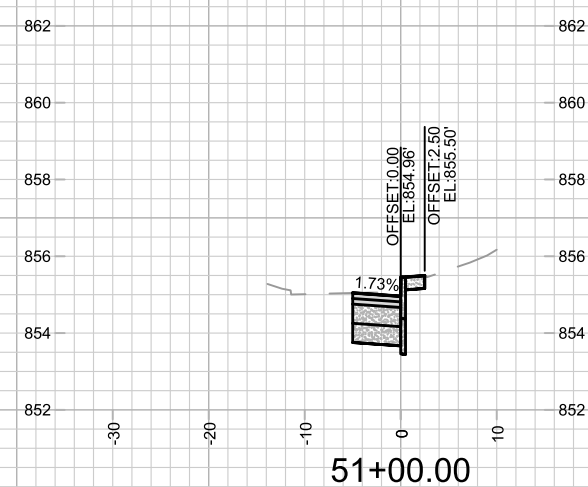
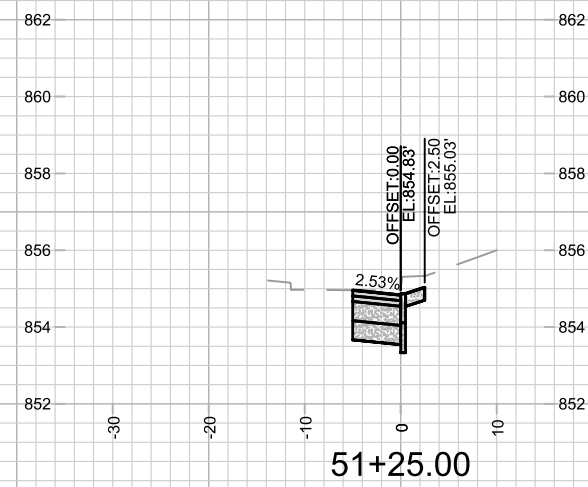
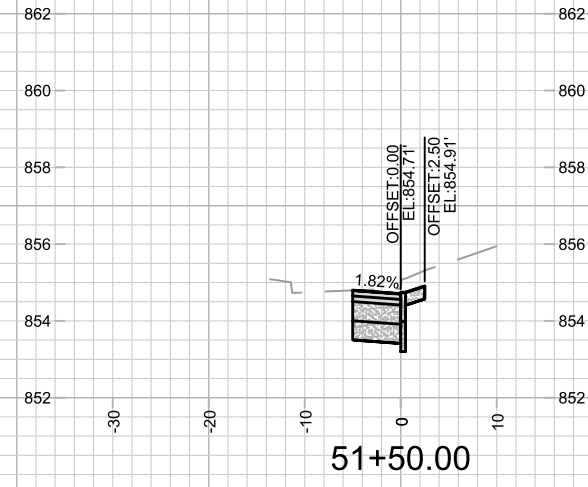
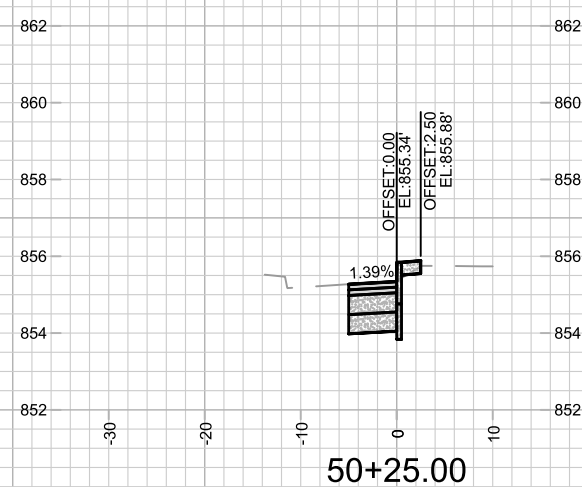
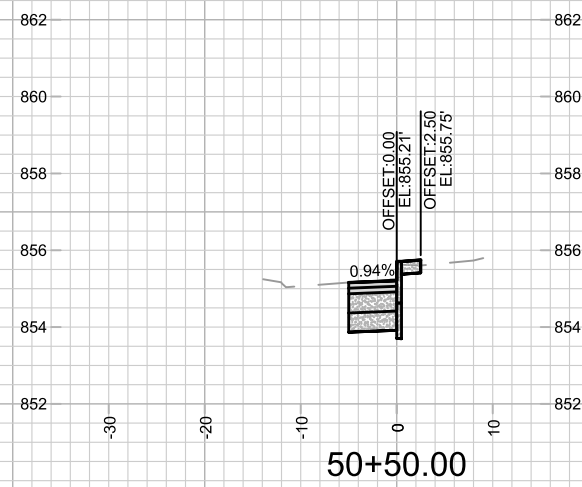
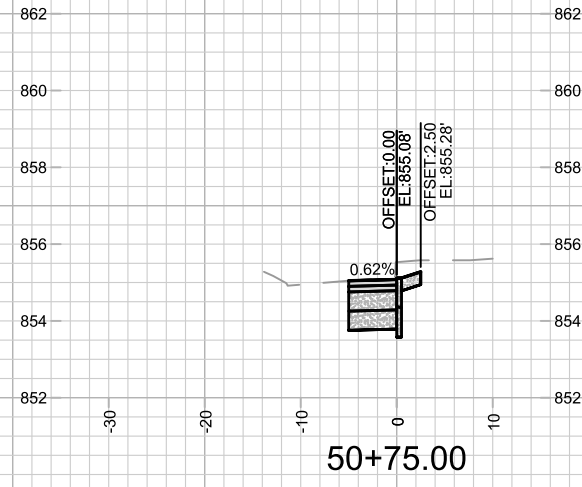
CROSS SECTIONS - N BASSETT ST
302 N BASSETT ST
M:\DESIGN\Projects\14038\CAD\Streets\14038EN-Xsections.dwg



14038
X-2

REVISION #1 - 9/6/2023 - FBEG

1. SHEET ADDED.



MARK	REVISION	DATE	BY
14038		9/6/2023 2:46 PM	

14038
MADISON, WI
9150
CONTRACT NO:

CROSS SECTIONS - CONKLIN PL
302 N BASSETT ST
M:\DESIGN\Projects\14038\CAD\Streets\14038EN-Xsections.dwg



14038
X-3