

Madison, Wisconsin

CITY OF MADISON

CITY ENGINEERING DIVISION

DEPARTMENT OF PUBLIC WORKS

PLAN OF PROPOSED IMPROVEMENT

3824 JOHN WALL DRIVE

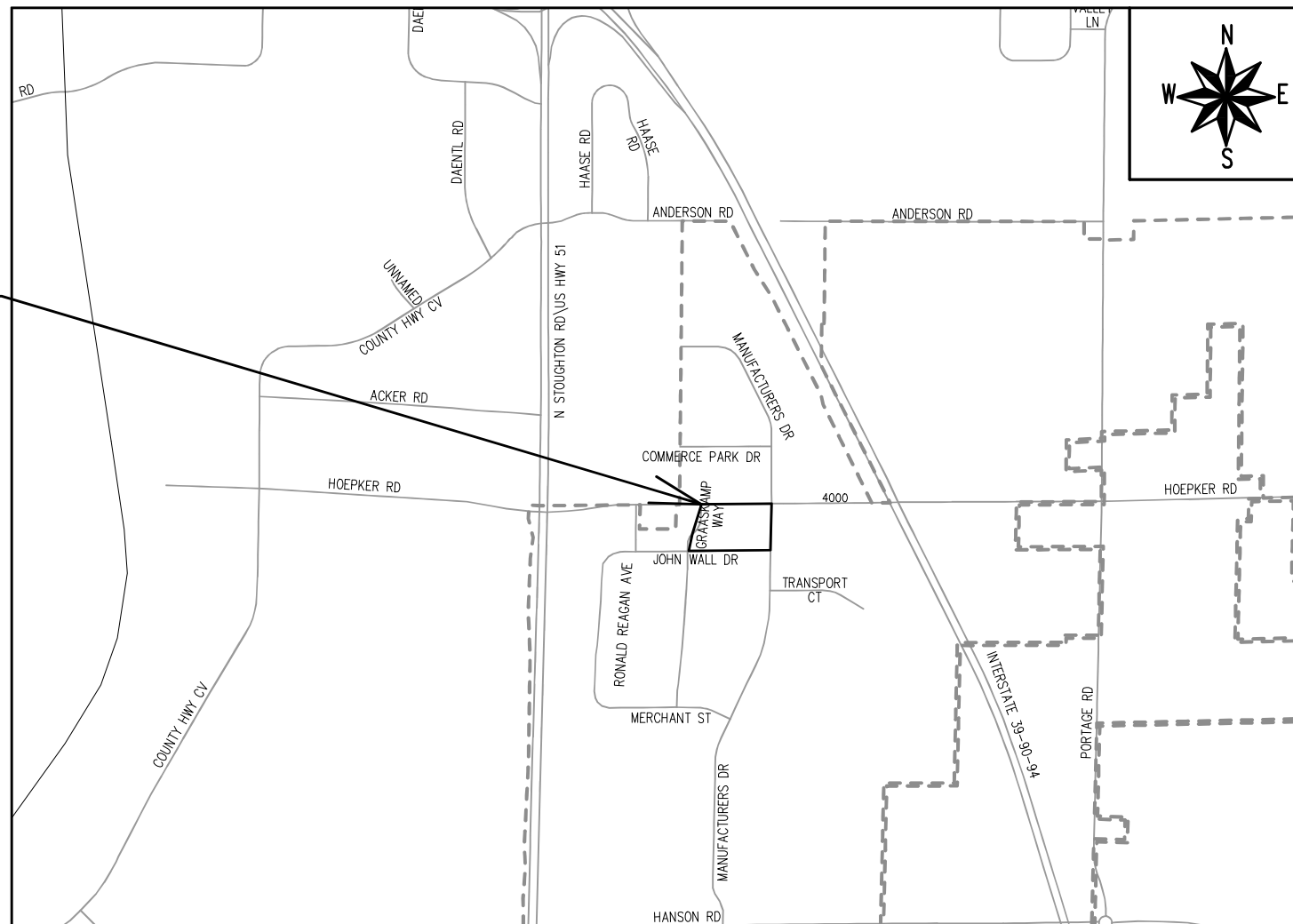
CITY PROJECT NO. 14106
CONTRACT NO. 9177

INDEX OF SHEETS

SHEET NO.	D1	NOTES AND TYPICAL SECTION
SHEET NO.	P1-P2	STREET PLAN & PROFILES
SHEET NO.	U1	UTILITY PLAN
SHEET NO.	XS1-XS2	CROSS SECTION

NO MAINTENANCE PLAN REQUIRED

PROJECT LOCATION



PUBLIC IMPROVEMENT PROJECT APPROVED

MAY 10, 2022

BY THE COMMON COUNCIL OF MADISON, WISCONSIN

PUBLIC IMPROVEMENT DESIGN APPROVED BY:

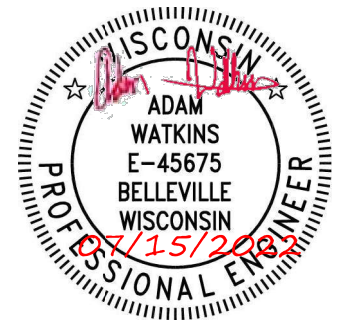
Greg Fries

Jul 18, 2022

City Engineer

Date

STREET DESIGNED BY:



SANITARY SEWER DESIGNED BY:

LATERAL ONLY

STORM SEWER DESIGNED BY:

LATERAL ONLY

WATER DESIGNED BY:

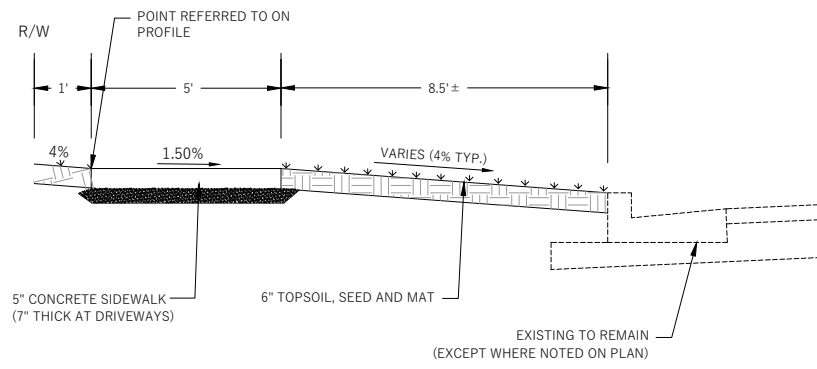
LATERAL ONLY

PLOT SCALE: 1:1_XREF

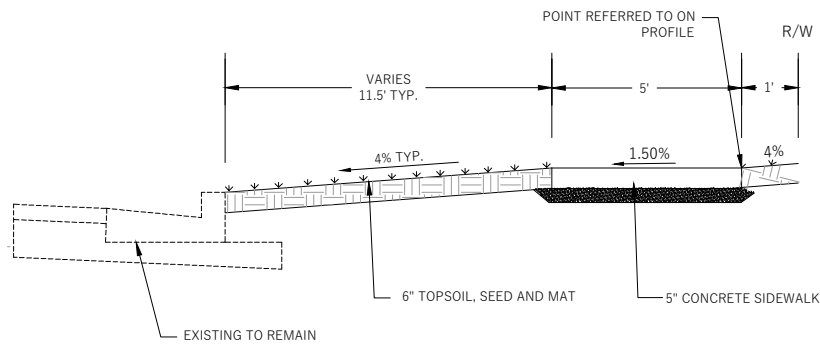
PLOT NAME: ---

REV. DATE: 6/24/2022 8:22 AM

ORIGINATOR: CITY_OF_MADISON



JOHN WALL DRIVE TYPICAL SIDEWALK SECTION



HOEPKER ROAD TYPICAL SIDEWALK SECTION

GENERAL:

THE DEVELOPER SHALL REPLACE ALL CURB & GUTTER AND SIDEWALK THAT IS DAMAGED OR DETERMINED TO BE IN UNSATISFACTORY CONDITION, REGARDLESS OF WHETHER THE DAMAGE EXISTED PRIOR TO CONSTRUCTION.

PAVEMENT SAWCUTS AND FINAL PAVEMENT PATCHING LIMITS SHALL BE AS DIRECTED BY THE CITY CONSTRUCTION ENGINEER. SAWCUTS AND LIMITS SHOWN ON THE PLAN ARE BASED ON ANTICIPATED DISTURBANCE AND THE PATCHING CRITERIA BUT SHALL BE CONSIDERED APPROXIMATE. ALL PAVEMENT PATCHING SHALL BE PER THE CITY'S PATCHING CRITERIA.

ANY INFORMATION SHOWN ON THIS PLAN, WHICH IS NOT PART OF THIS RIGHT-OF-WAY PROJECT, IS PRELIMINARY AND NOT FOR CONSTRUCTION.

OBTAIN A PRINT OUT OF THE ALIGNMENT FROM THE CITY ENGINEER PRIOR TO STAKING THIS PROJECT.

THE CONTRACTOR SHALL SUBMIT A TRAFFIC CONTROL PLAN FOR REVIEW TO THE CITY TRAFFIC ENGINEERING DIVISION AT LEAST 10 WORKING DAYS PRIOR TO WORK BEGINNING. THE TRAFFIC CONTROL PLAN SHALL COMPLY WITH ALL MUTCD REQUIREMENTS. WORK SHALL NOT PROCEED UNTIL THE TRAFFIC CONTROL PLAN HAS BEEN APPROVED. THE TRAFFIC CONTROL PLAN MAY INCLUDE BUT IS NOT LIMITED TO: LANE CLOSURE RESTRICTIONS, PEAK HOUR WORKING RESTRICTIONS, ACCESS REQUIREMENTS, ETC. THE CONTRACTOR SHALL BE RESPONSIBLE FOR PHASING WORK AS NECESSARY TO MEET THE REQUIREMENTS OF THE APPROVED TRAFFIC CONTROL PLAN.

STREET DESIGN:

ALL DISTURBED TERRACE AREAS SHALL BE RESTORED WITH 6-INCHES OF TOP SOIL AND SEED UNLESS DIRECTED OTHERWISE ON THE PLAN OR BY THE CITY CONSTRUCTION ENGINEER.

THE CROSS SLOPE OF SIDEWALKS AND BARRIER FREE SIDEWALK CURB RAMPS SHALL BE 1.5%. THE LONGITUDINAL GRADE OF BARRIER FREE SIDEWALK CURB RAMPS SHALL NOT EXCEED 8.33%. ALL SIDEWALK RAMPS SHALL BE CONSTRUCTED ACCORDING TO S.D.D. 3.03. AT ALL OTHER LOCATIONS THE LONGITUDINAL GRADE OF SIDEWALKS SHALL NOT EXCEED 5.0% OR THE ADJACENT STREET GRADE WHICHEVER IS GREATER NOR BE LESS THAN 0.5% AND SHALL DRAIN TOWARD STORM SEWER INLETS. CONCRETE TERRACE SHALL BE INSTALLED BETWEEN THE SIDEWALK AND THE BACK OF CURB AT SIDEWALK LOW POINTS WHICH CANNOT OTHERWISE BE DRAINED DIRECTLY TO THE GUTTER. SIDE SLOPES WITHIN TEN FEET OF A PUBLIC SIDEWALK SHALL NOT EXCEED 4.00:1. ALL SIDEWALK AND SIDEWALK RAMP ELEVATIONS AND GRADES SHALL BE FIELD VERIFIED AND SET TO COMPLY WITH THE CITY OF MADISON STANDARD SPECIFICATIONS AND THE A.D.A. GUIDELINES. CURB STATION AND OFFSETS SHALL BE TO THE EDGE OF PAVEMENT UNLESS OTHERWISE INDICATED. CURB ELEVATIONS SHALL BE TO THE EDGE OF PAVEMENT UNLESS OTHERWISE INDICATED.

UTILITIES:

POWER POLES AND OTHER OBSTRUCTIONS SHALL BE MOVED TO PROVIDE 2 FEET MINIMUM OF CLEAR DISTANCE FROM ANY FACE OF CURB OR EDGE OF SIDEWALK.

THERE MAY BE EXISTING UTILITIES OR OTHER FEATURES WHICH ARE EITHER NOT SHOWN OR SHOWN INCORRECTLY ON THIS PLAN. IT IS THE RESPONSIBILITY OF THE DEVELOPER TO LOCATE AND IDENTIFY ALL UTILITIES AND TOPOGRAPHY WHICH MAY AFFECT THE CONSTRUCTION OF THESE IMPROVEMENTS.

RELOCATION OR ADJUSTING OF PRIVATE UTILITY FACILITIES, SUCH AS POLES, PEDESTALS, BOXES, STRUCTURES, CASTINGS OR HANDHOLES, WITH PRIVATE UTILITY COMPANIES.

3824 JOHN WALL DRIVE IMPROVEMENTS

CITY OF MADISON, DANE COUNTY, WI

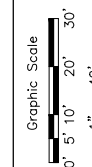


Sheet Title:
STANDARD NOTES AND TYPICAL SECTION
JOHN WALL DRIVE SIDEWALK
CITY OF MADISON PROJECT NO. 14106

3824 JOHN WALL DRIVE
MADISON, WI 53704

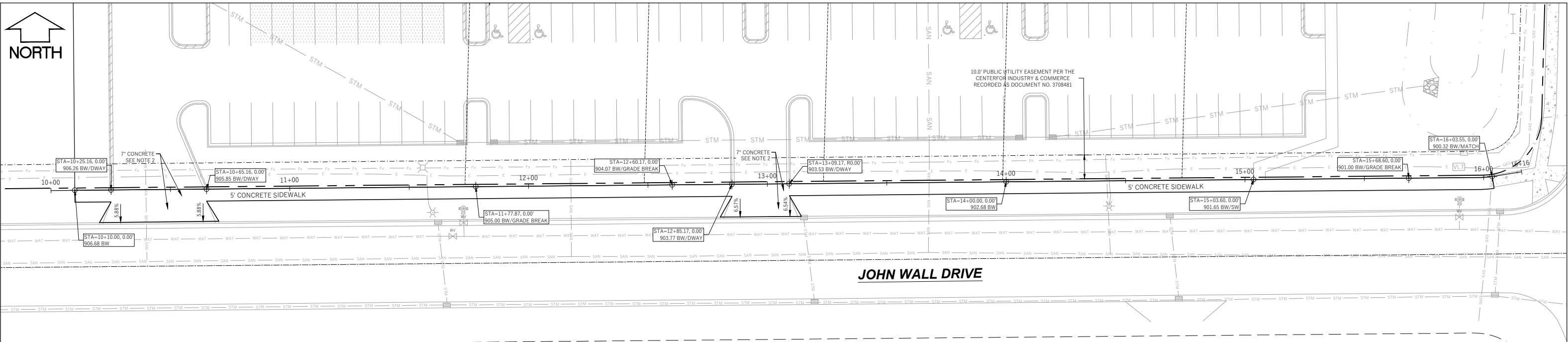


Toll Free (800) 242-8511 -or- 811
Hearing Impaired TDD (800) 542-2289
www.DiggersHotline.com



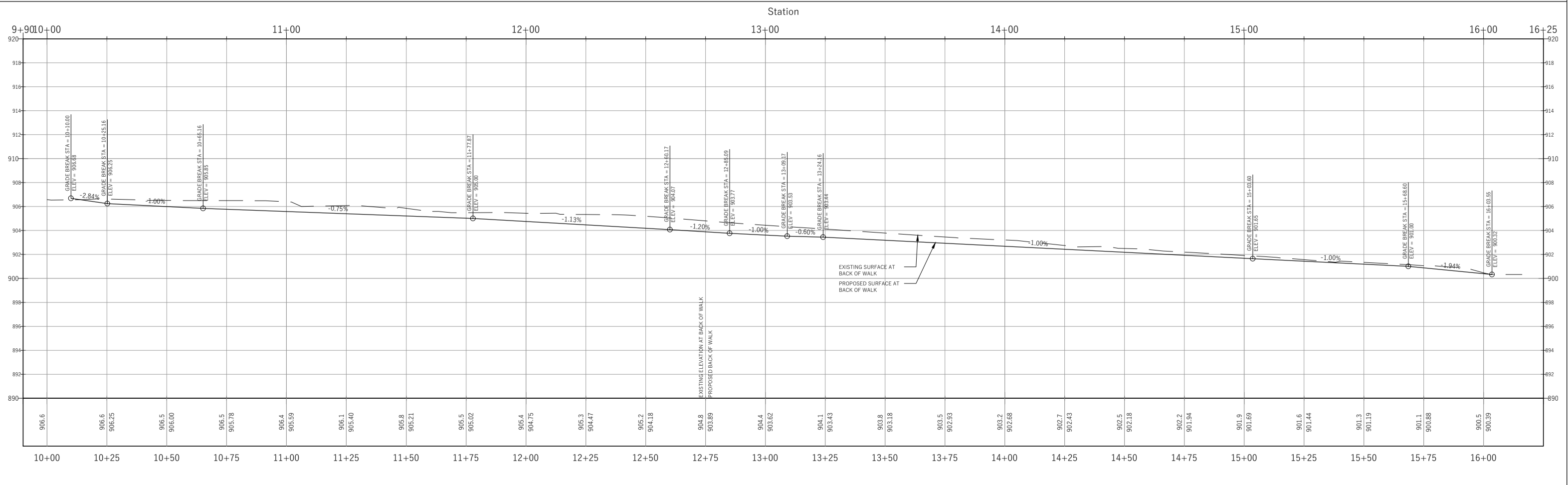
Revisions:	No.	Date:	Description:

Wyser Number	21-0868
Set Type	REVIEW
Date Issued	06/22/2022
Sheet Number	D-1



NOTES:
 1. DEVELOPER SHALL BE RESPONSIBLE FOR COORDINATING AND SCHEDULING ANY REQUIRED RELOCATION OR ADJUSTING OF PRIVATE UTILITY FACILITIES, SUCH AS POLES, PEDESTALS, BOXES, STRUCTURES, CASTINGS OR MANHOLES, WITH PRIVATE UTILITY COMPANIES.
 2. SEE COMMERCIAL DRIVEWAY PERMIT LNDUSE-2022-00012

0810-162-0216-1
 MADISON UWMS LLC
 3819 JOHN WALL DRIVE



File: W:\2021\210868_Newscomb - CIC Flex Building, Madison\DWG\210868_Civil_Design_Public_Planning_Layout_P-1 User: Adm. Plotter: Jun 22, 2022 - 9:22am

3824 JOHN WALL DRIVE IMPROVEMENTS



CITY OF MADISON, DANE COUNTY, WI

Sheet Title:
 PLAN AND PROFILE
 JOHN WALL DRIVE SIDEWALK
 CITY OF MADISON PROJECT NO. 14106

3824 JOHN WALL DRIVE
 MADISON, WI 53704

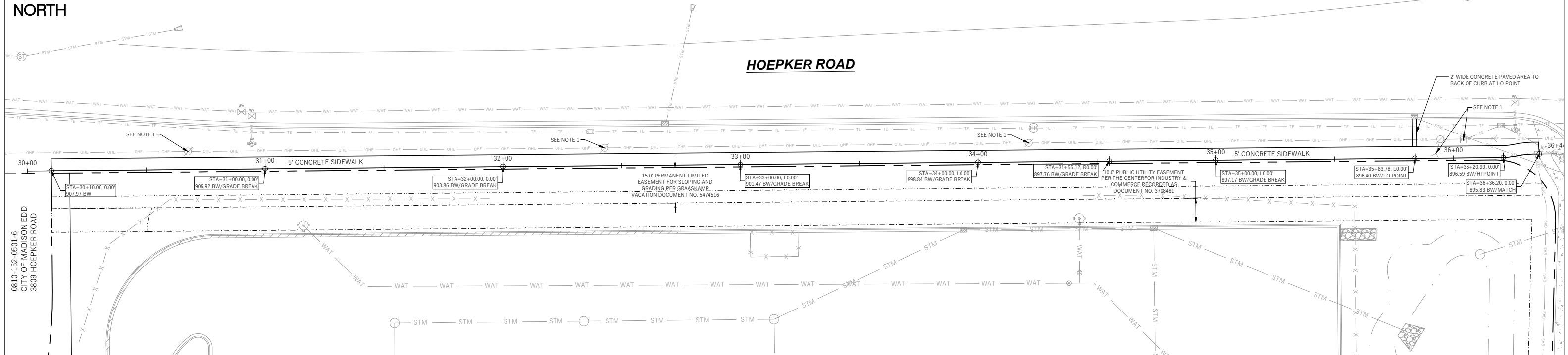
DIGGERS HOTLINE
 Toll Free (800) 242-8511 or- 811
 Hearing Impaired TDD (800) 542-2289
 www.DiggersHotline.com

Graphic Scale 0" = 5' 10" = 20' = 30' 1" = 40'	
Revisions:	
No.	Date: Description:

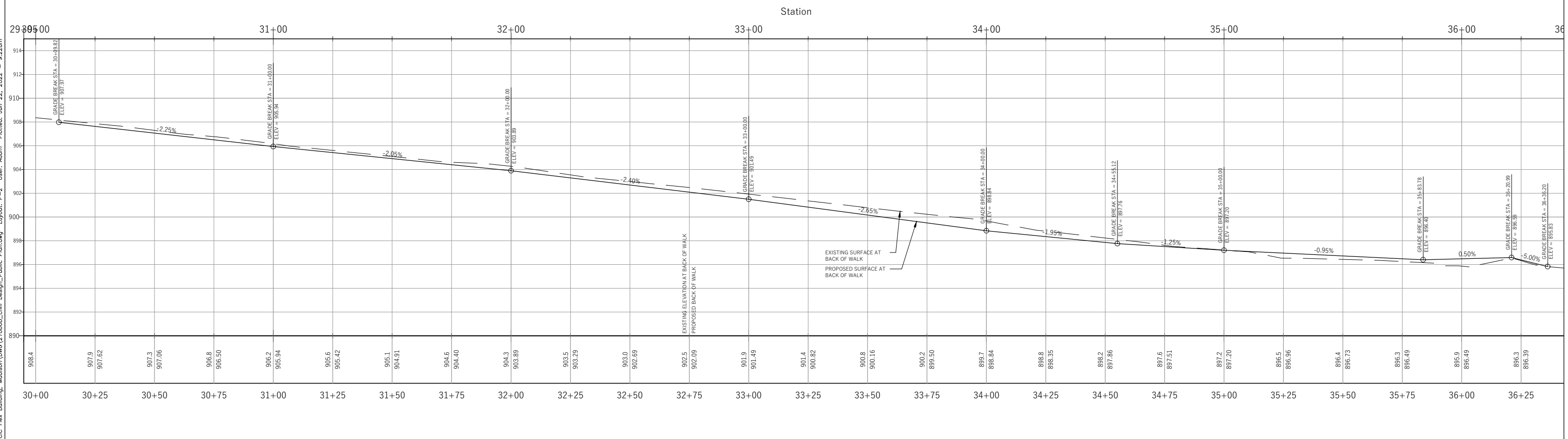
Wyser Number	21-0868
Set Type	REVIEW
Date Issued	06/22/2022
Sheet Number	P-1



NOTES:
 1. DEVELOPER SHALL BE RESPONSIBLE FOR COORDINATING AND SCHEDULING ANY REQUIRED RELOCATION OR ADJUSTING OF PRIVATE UTILITY FACILITIES, SUCH AS POLES, PEDESTALS, BOXES, STRUCTURES, CASTINGS OR MANHOLES, WITH PRIVATE UTILITY COMPANIES.



Hoepker Sidewalk PROFILE



File: W:\2021\210868_Newscomb - CIC Flex Building, Madison\DWG\210868_Civil_Design_Public_Plan.dwg Layout: P-2 User: Adm Plotter: Jun 22, 2022 - 9:22am

3824 JOHN WALL DRIVE IMPROVEMENTS



CITY OF MADISON, DANE COUNTY, WI

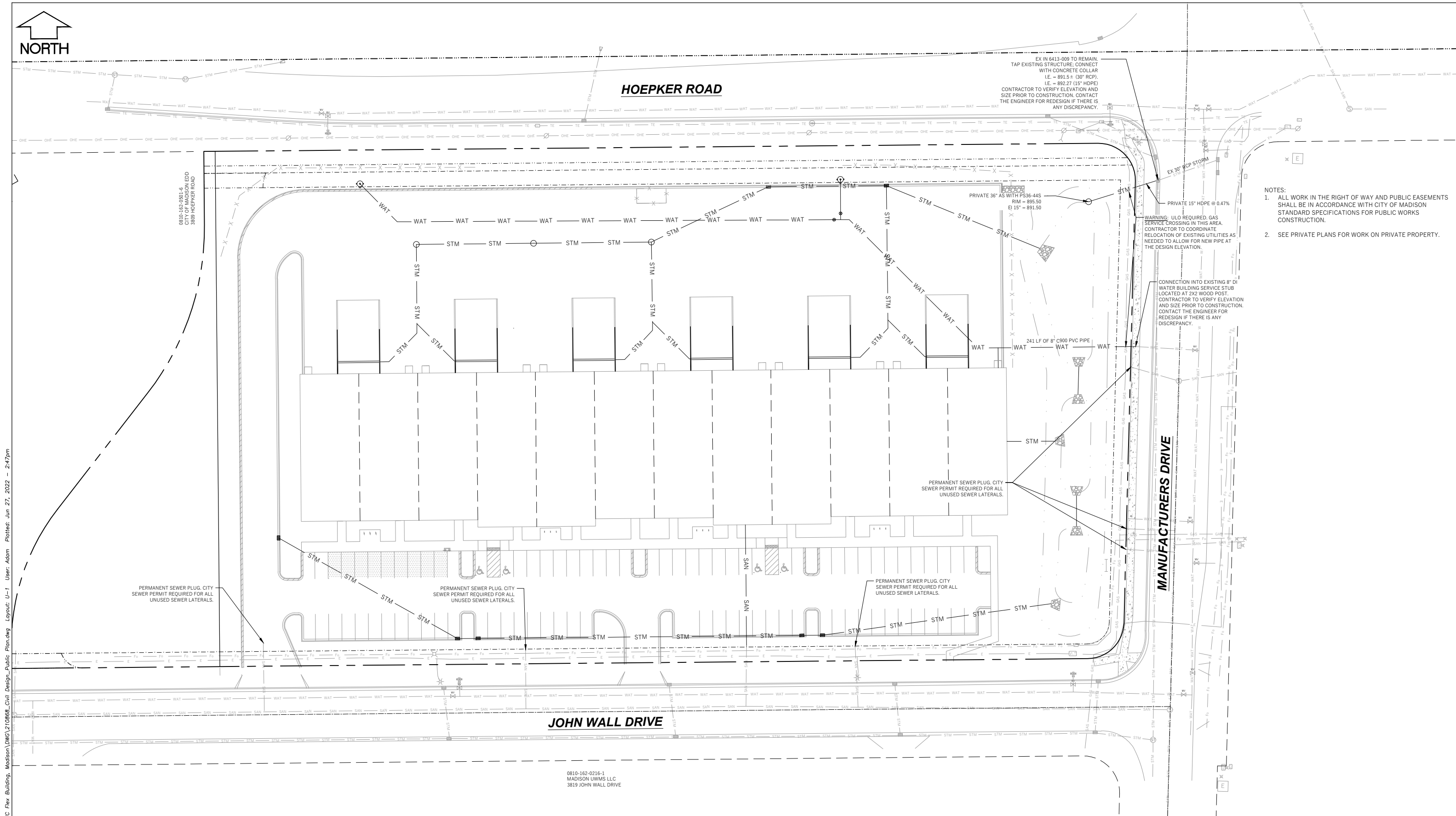
Sheet Title:
 PLAN AND PROFILE
 HOEPKER ROAD SIDEWALK
 CITY OF MADISON PROJECT NO. 14106

3824 JOHN WALL DRIVE
 MADISON, WI 53704

DIGGERS HOTLINE
 Toll Free (800) 242-8511 or- 811
 Hearing Impaired TDD (800) 542-2289
 www.DiggersHotline.com

Graphic Scale	
0'	5' 10' 20' 30'
1" = 40'	
Revisions:	Description:
No.	Date:

Wyser Number	21-0868
Set Type	REVIEW
Date Issued	06/22/2022
Sheet Number	P-2



- NOTES:
1. ALL WORK IN THE RIGHT OF WAY AND PUBLIC EASEMENTS SHALL BE IN ACCORDANCE WITH CITY OF MADISON STANDARD SPECIFICATIONS FOR PUBLIC WORKS CONSTRUCTION.
 2. SEE PRIVATE PLANS FOR WORK ON PRIVATE PROPERTY.

File: W:\2021\210868_Newscomb - CIC Flex Building - Madison\DWG\210868_Civil_Design_Public_Plan.dwg Layout: U-1 User: Adom Plotter: Jun 27, 2022 - 2:47pm

3824 JOHN WALL DRIVE IMPROVEMENTS



CITY OF MADISON, DANE COUNTY, WI

Sheet Title:
 UTILITY PLAN
 CITY OF MADISON PROJECT NO. 14106

3824 JOHN WALL DRIVE
 MADISON, WI 53704

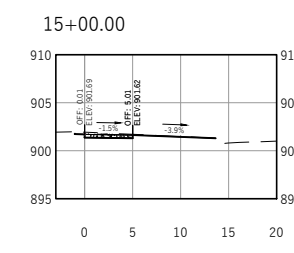
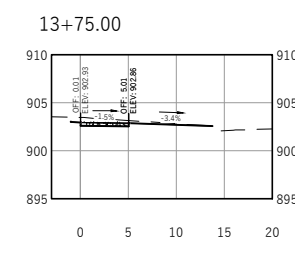
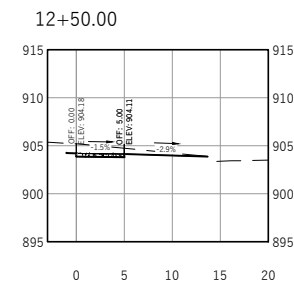
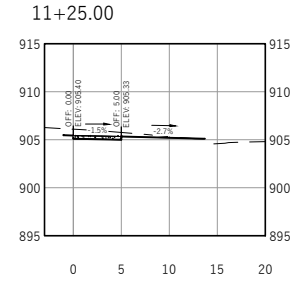
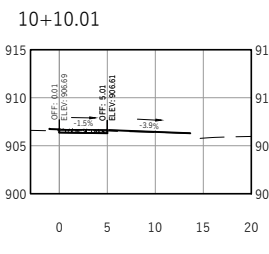
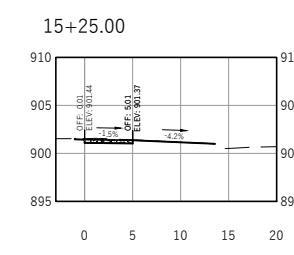
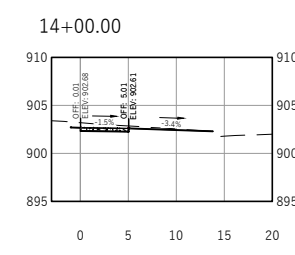
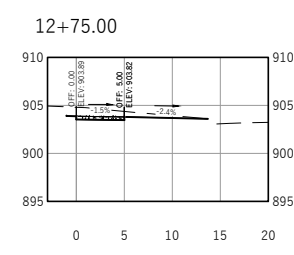
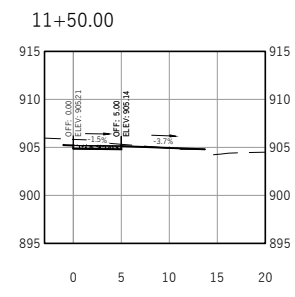
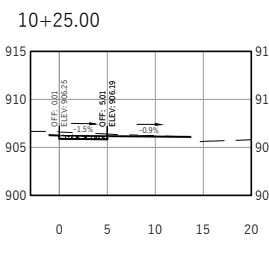
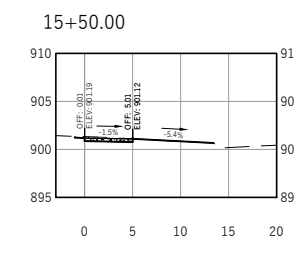
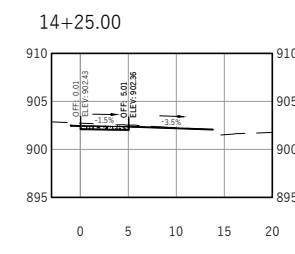
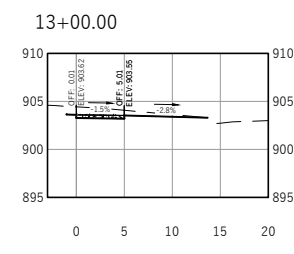
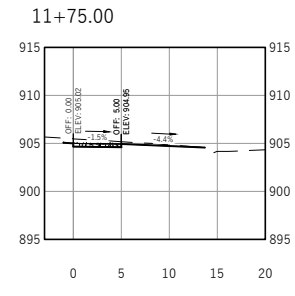
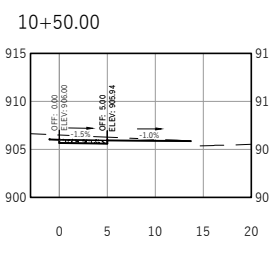
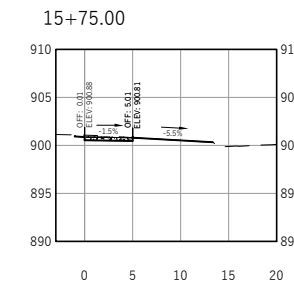
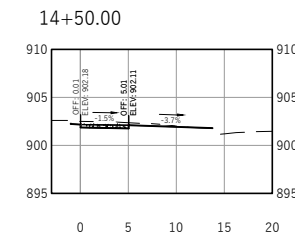
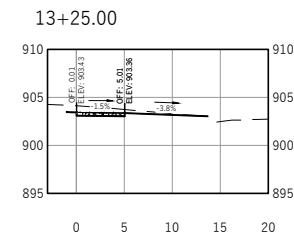
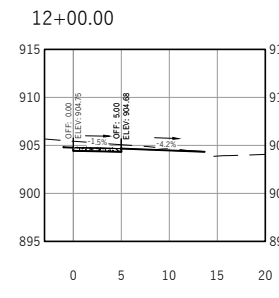
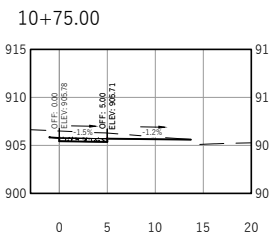
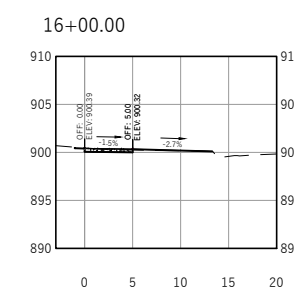
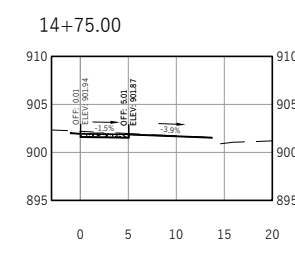
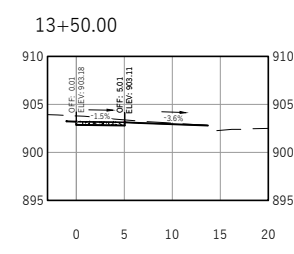
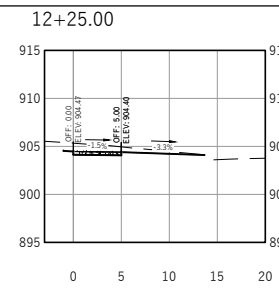
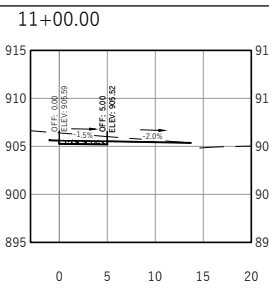


Graphic Scale
 0' 15' 30' 45'
 1" = 60'

No.	Date	Description

Wyser Number	21-0868
Set Type	REVIEW
Date Issued	06/27/2022
Sheet Number	U-1

File: W:\2021\210668_Newscomb - CIC Flex Building - Madison\DWG\210668_Civil_Design_Public_Plan.dwg Layout: XS-1 User: Adm Plotted: Jun 27, 2022 - 3:49pm



3826 JOHN WALL DRIVE IMPROVEMENTS

CITY OF MADISON, DANE COUNTY, WI

Sheet Title:
JOHN WALL DRIVE SIDEWALK CROSS SECTIONS
CITY OF MADISON PROJECT NO. 14106

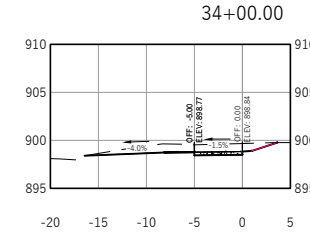
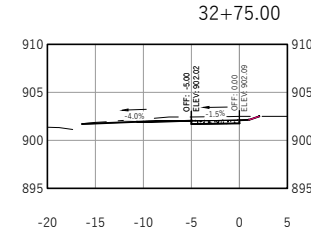
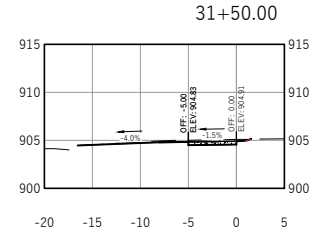
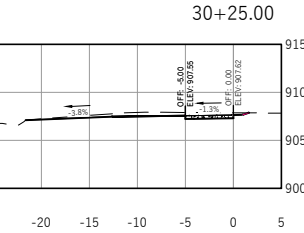
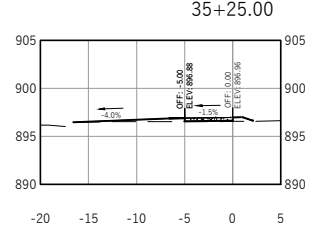
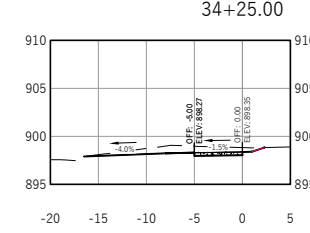
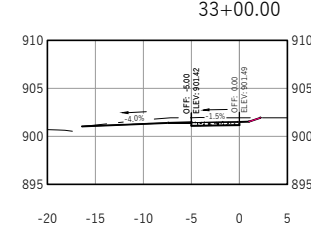
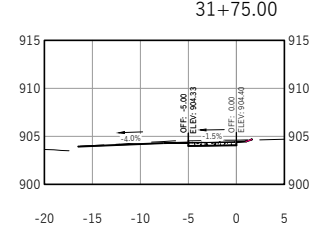
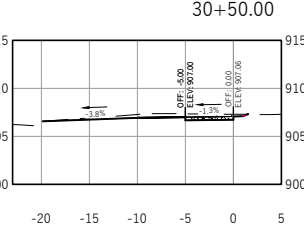
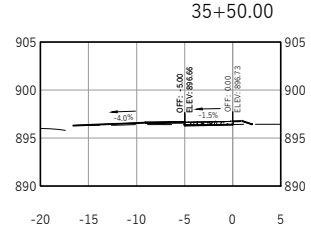
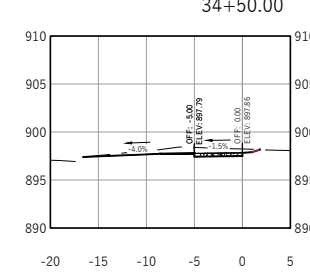
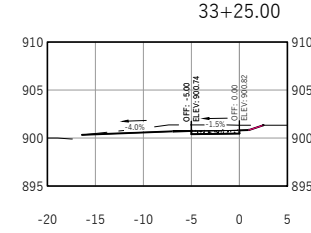
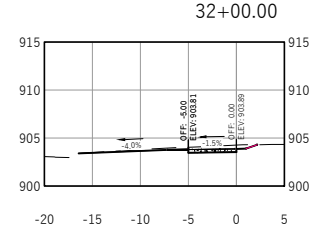
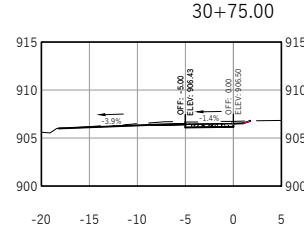
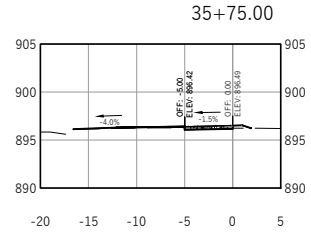
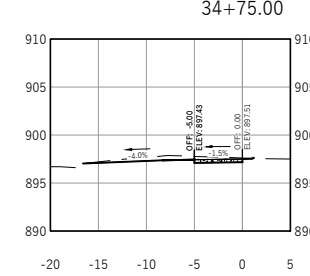
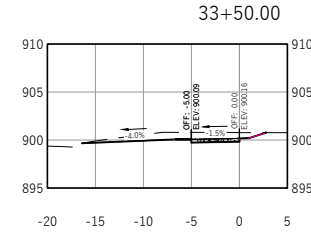
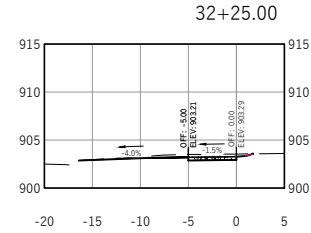
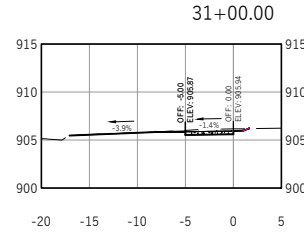
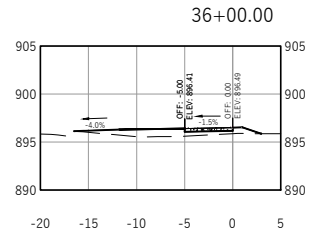
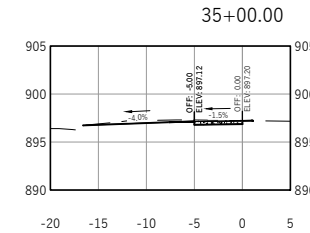
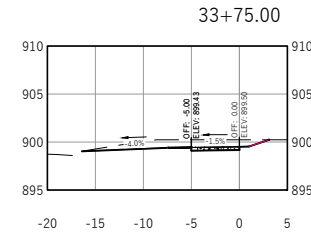
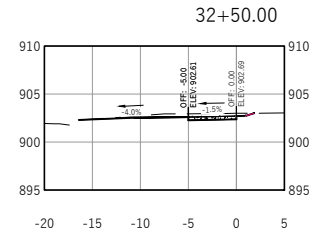
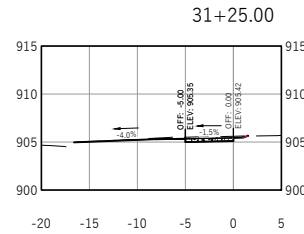
3826 JOHN WALL DRIVE
MADISON, WI 53704

DIGGERS HOTLINE
Toll Free (800) 242-8511 or 811
Hearing Impaired TDD (800) 542-2289
www.DiggersHotline.com

Graphic Scale
0' 5' 10' 15'
1" = 20'

Revisions:	No.	Date:	Description:

Wyser Number	21-0868
Set Type	REVIEW
Date Issued	06/27/2022
Sheet Number	XS-1



3826 JOHN WALL DRIVE IMPROVEMENTS

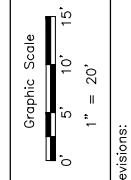
CITY OF MADISON, DANE COUNTY, WI



Sheet Title:
HOEPKER ROAD SIDEWALK CROSS SECTIONS
CITY OF MADISON PROJECT NO. 14106

3826 JOHN WALL DRIVE
MADISON, WI 53704

DIGGERS HOTLINE
Toll Free (800) 242-8511 or- 811
Hearing Impaired TDD (800) 542-2289
www.DiggersHotline.com



No.	Date	Description

Wyser Number	21-0868
Set Type	REVIEW
Date Issued	06/27/2022
Sheet Number	XS-2