



Madison, Wisconsin

CITY OF MADISON

CITY ENGINEERING DIVISION

DEPARTMENT OF PUBLIC WORKS

PLAN OF PROPOSED IMPROVEMENT

INDEX OF SHEETS

SHEET NO. C1.2	SWMP BASIN DETAILS
SHEET NO. C2.0	SITE GRADING PLAN
SHEET NO. C2.1	WEST POND GRADING PLAN
SHEET NO. C2.2	EAST POND GRADING PLAN

FOX KNOLL: STORMWATER MANAGEMENT PLAN

CITY PROJECT NO. 14193
CONTRACT NO. 9185

PUBLIC IMPROVEMENT PROJECT
APPROVED

JULY 12, 2022

BY THE COMMON COUNCIL
OF MADISON, WISCONSIN

PUBLIC IMPROVEMENT DESIGN
APPROVED BY:

May 21, 2024

City Engineer

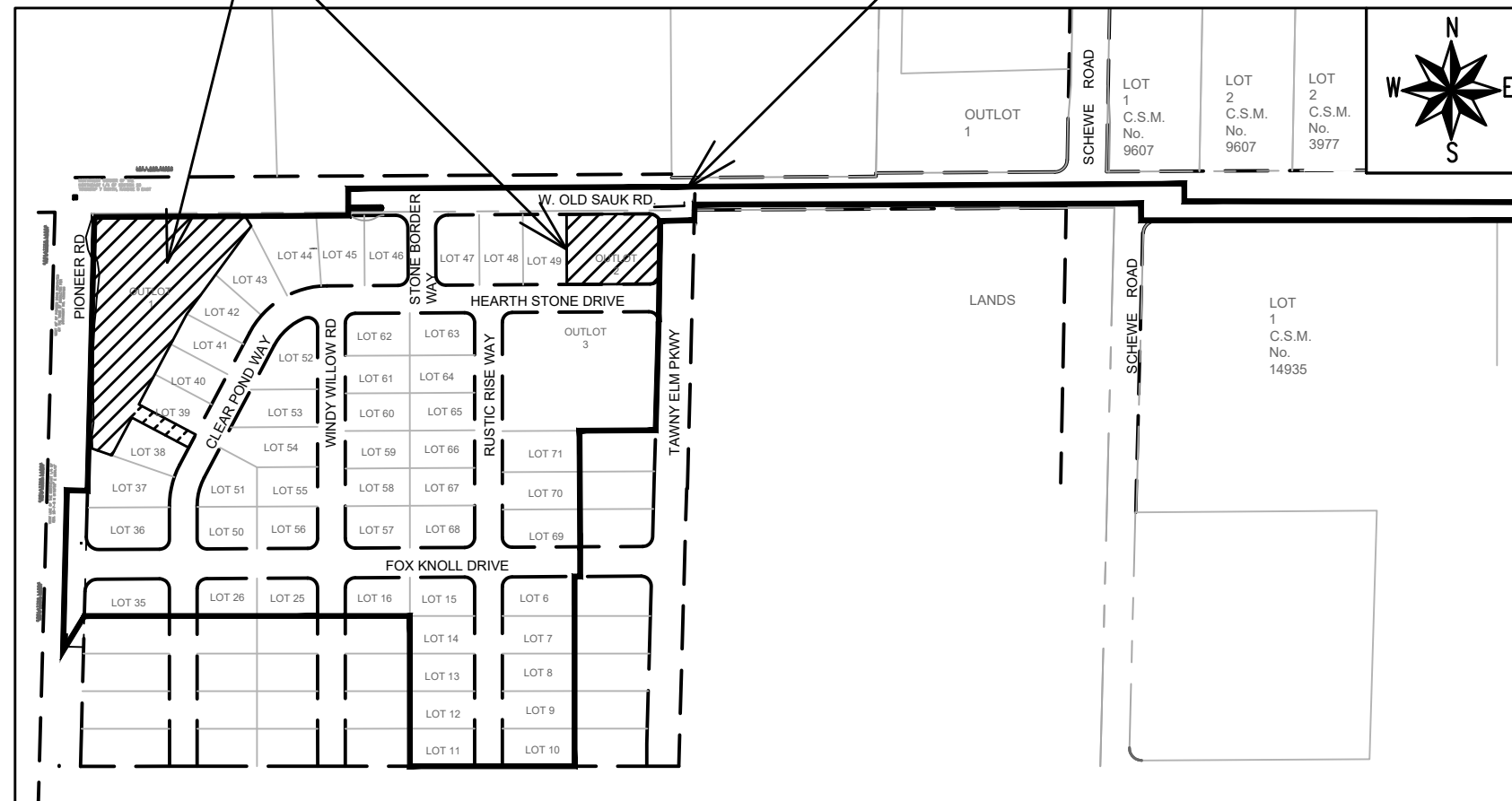
Date

STORM WATER MANAGEMENT
PLAN DESIGNED BY:

May 22, 2024

PROJECT
LOCATION

SEE PROJECT NO. 14192
FOX KNOLL PHASE 1

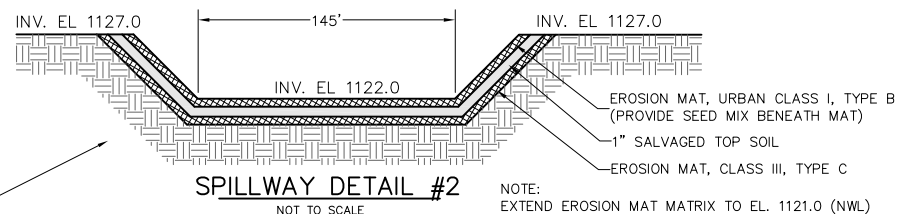
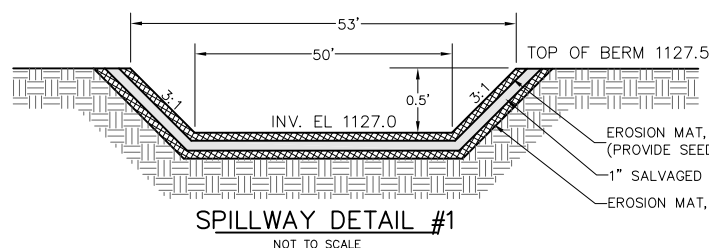


PLOT SCALE: 1" = 1'

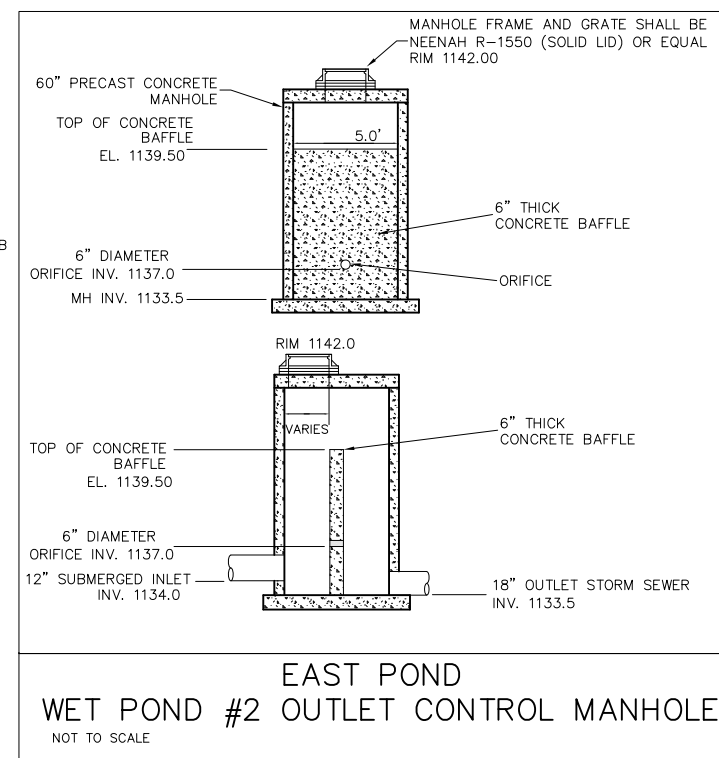
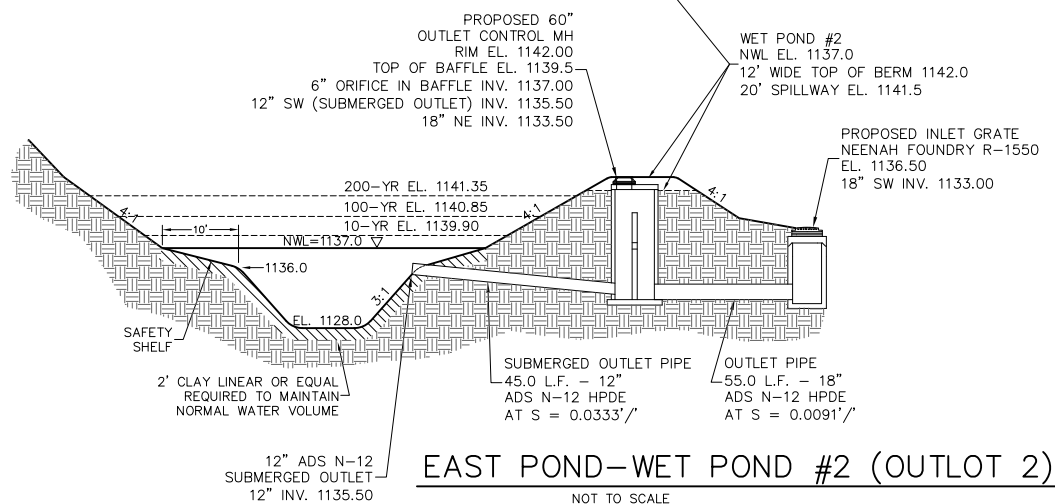
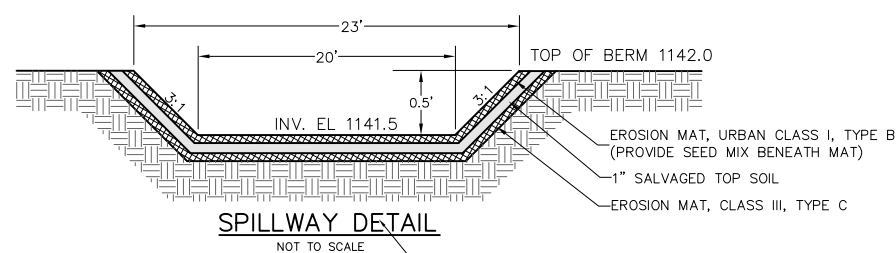
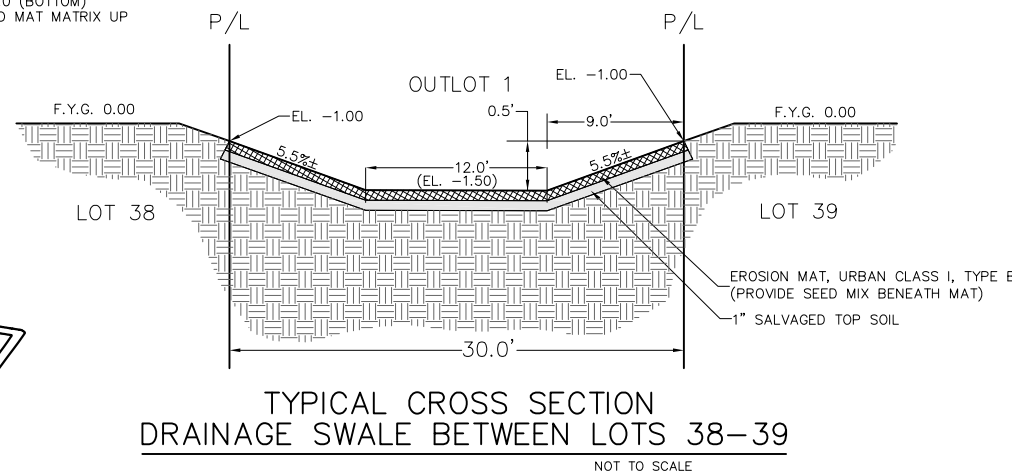
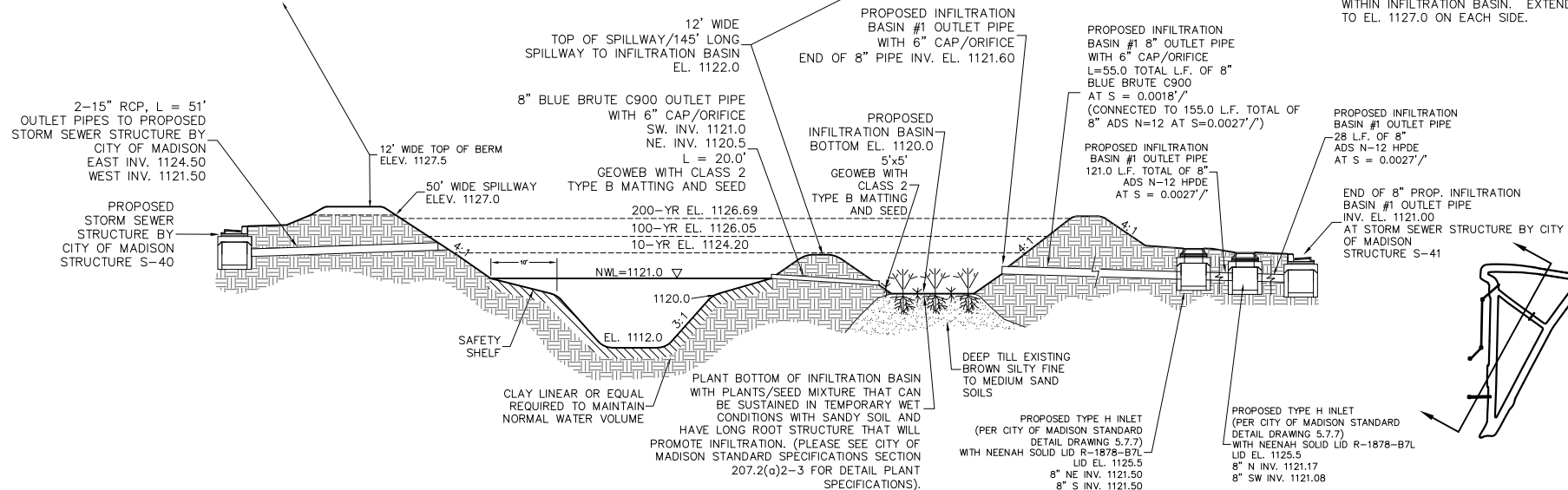
PLOT NAME: ---

REV. DATE: 4/12/2024 2:41 PM

ORIGINATOR: CITY_OF_MADISON

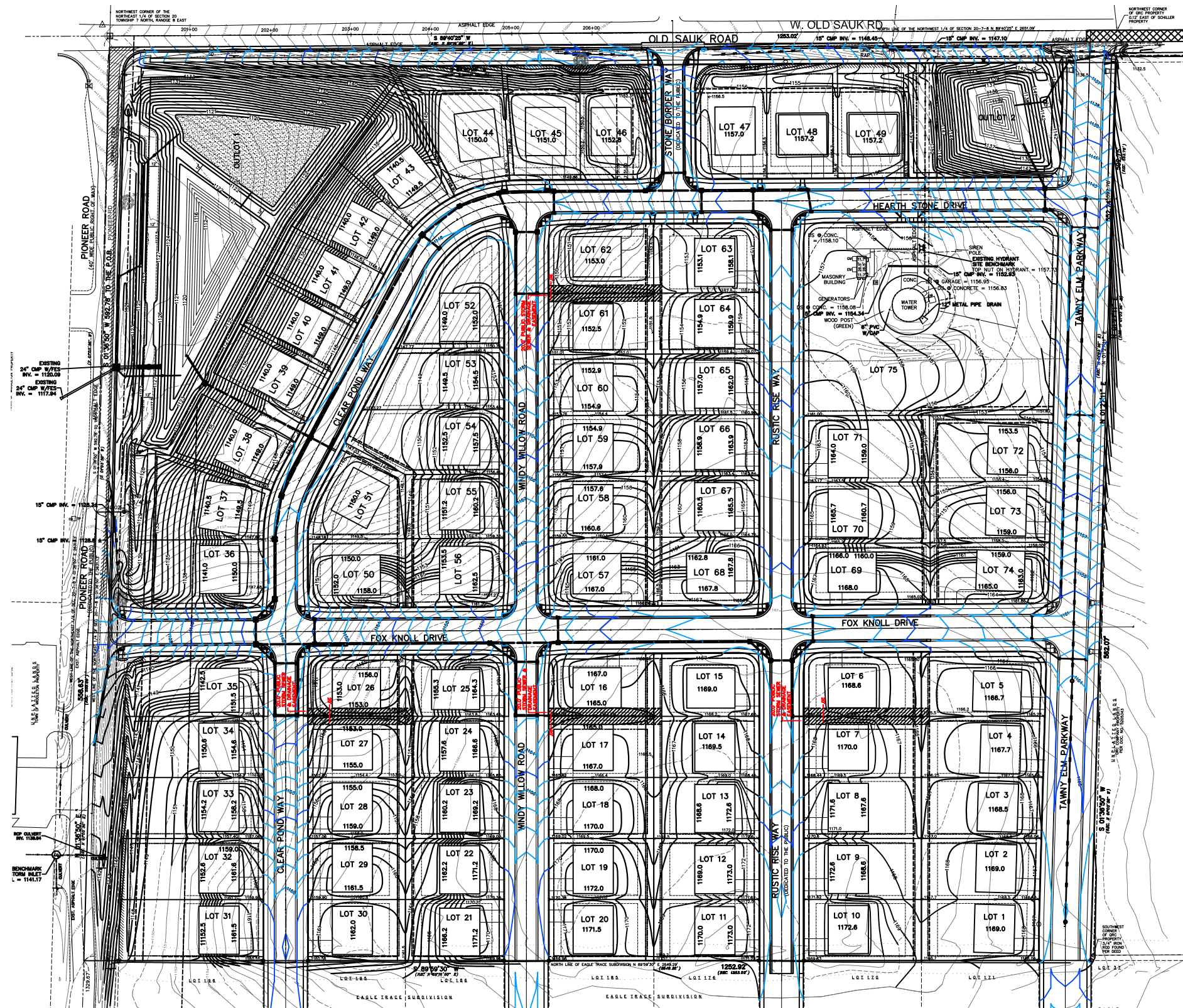


NOTE:
 EXTEND EROSION MAT MATRIX TO EL. 1121.0 (NWL)
 WITHIN WET FOREBAY AND EL. 1120.0 (BOTTOM)
 WITHIN INFILTRATION BASIN. EXTEND MAT MATRIX UP
 TO EL. 1127.0 ON EACH SIDE.



- g. The Developer shall maintain the newly seeded area with a goal of native plant establishment. Maintenance shall be completed by an ecological restoration landscaping firm, prequalified by the City, with knowledge and experience in maintaining native plantings.
- i. This will include a requirement of provision of a proposed course of action for establishment of the native planting at the time of pond/greenway approval, aka a "Vegetation Maintenance Plan."
- ii. This will include an annual report of actions completed (mowing, burning, pesticide application, etc.) to City Engineering annually until the pond/greenway is accepted.
- h. Prior to final acceptance of the pond/greenway, the site must meet the following conditions:
1. 80% or greater herbaceous native plant cover
 2. 0% cover by City of Madison listed noxious weeds
 3. <10% cover by select invasive plants:
 - a. WDNR NR40 "Prohibited" and "Restricted" species (or 0% cover if species on this list also appear on City of Madison Noxious weed ordinance)
 - b. Common burdock (*Arctium minus*)
 - c. Yellow or white sweet clover (*Mellilotus officinalis*, *M. alba*)
 - d. Bird's foot trefoil (*Lotus corniculatus*)
 - e. Crown vetch (*Securigera varia*)
 - f. Curly dock (*Rumex crispus*)
 - g. Giant ragweed (*Ambrosia trifida*)
 - h. Reed canary grass (*Phalaris arundinacea*)
 - i. Pampas grass (*Cortaderia selloana*)
 - j. Chinese silver grass (*Miscanthus sinensis*)
 - k. Golden creeper (*Thalassiantha dubia*)

FOX KNOLL SUBDIVISION
 MADISON, WISCONSIN



NOTES:

1. THE PUBLIC OUTLOT SHALL BE SEEDDED PER THE REQUIREMENTS SET FORTH IN THE CITY OF MADISON STANDARD SPECIFICATIONS. THE INFILTRATION BASIN BOTTOM SHALL BE SEEDDED WITH DETENTION BASIN AND INFILTRATION BASIN BOTTOM SEED MIX. THE REMAINING PUBLIC OUTLOT SHOULD BE SEEDDED WITH INFILTRATION BASIN SIDE SLOPED AND TALLGRASS PRAIRIE SEED MIX.
2. SEE NOTES G-H ON SHEET C1.2 & C1.3 FOR ADDITIONAL LANDSCAPE REQUIREMENTS

EROSION MATTING

AFTER FINISH GRADING AND TOPSOILING AND FOR FINAL STABILIZATION, PROVIDE URBAN CLASS I, TYPE B EROSION MAT PER 'WISDOT EROSION CONTROL PAL' (OR EQUAL) IN ALL ROADSIDE DITCHES, DEFINED SWALES, SIDE SLOPES, BERMS AND ALL OTHER SLOPES 4:1 OR GREATER. INSTALL PER MANUFACTURERS SPECIFICATIONS.

FOR THE THREE SITE SPILLWAYS, PROVIDE URBAN CLASS I, TYPE B EROSION MAT OVER CLASS III, TYPE C PER 'WISDOT EROSION CONTROL PAL' (OR EQUAL). SEE SITE DETAIL SHEET.

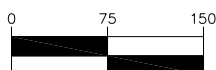
ALL EROSION MATTING SHALL MEET THE CITY OF MADISON STANDARD SPECIFICATIONS



Toll Free (800) 242-8511
 Milwaukee Area (414) 259-1181
 Hearing Impaired TDD (800) 542-2289
 www.DiggersHotline.com

LEGEND	
	EXISTING CONTOUR
	PROPOSED CONTOUR
	PROPOSED ELEVATION
	PROPOSED STORM SEWER
	PROPOSED ROAD CONTOURS BY CITY OF MADISON
	PROPOSED BUILDING PAD W/FINISHED YARD GRADES

GRAPHIC SCALE

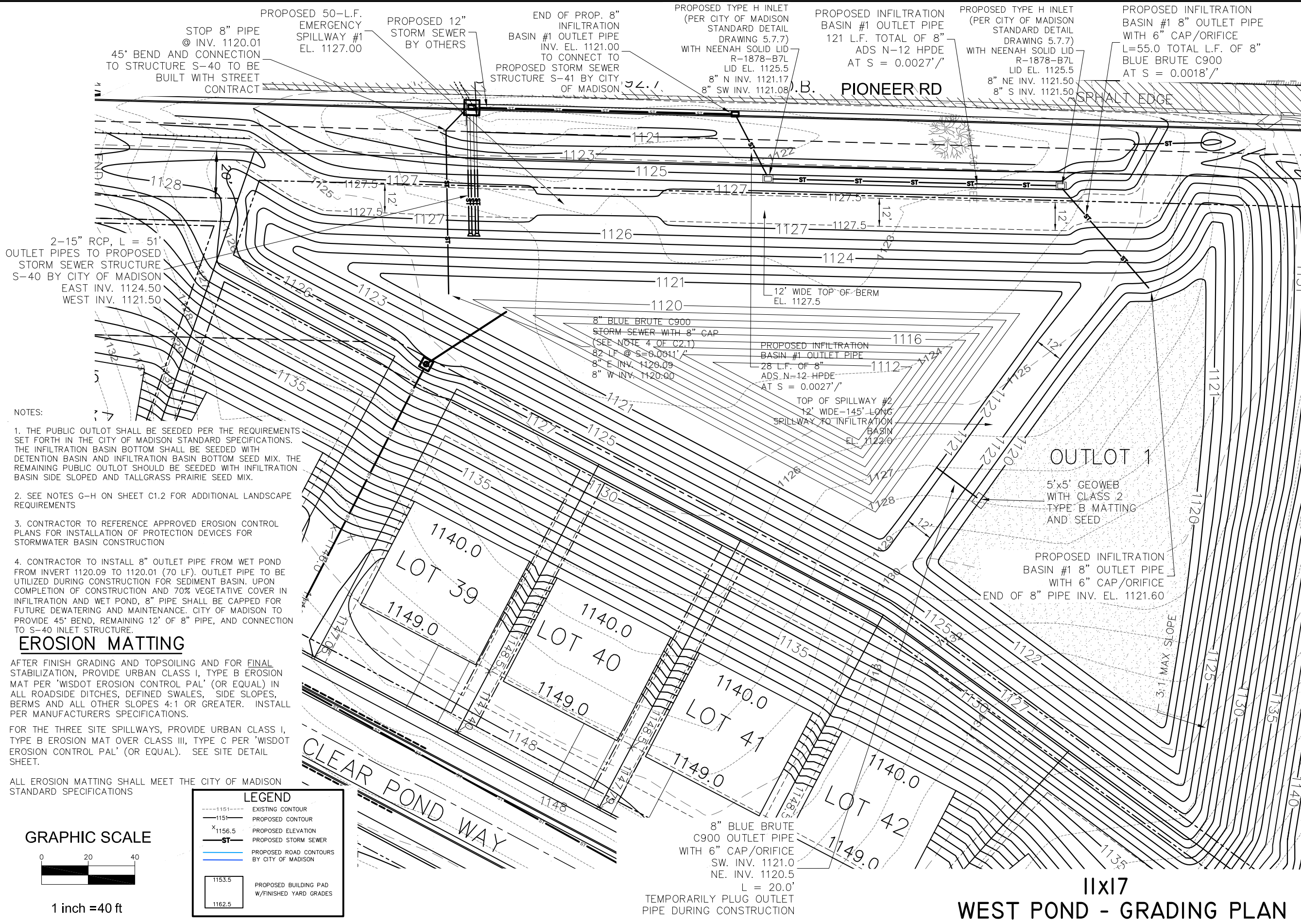


1 inch = 150ft

FOX KNOLL SUBDIVISION
 MADISON, WISCONSIN

CJE NO.: 2019R6-02
 NOVEMBER 27, 2023
 REV.: 02/13/2024
 REV.: 04/23/2024

C2.1



- NOTES:
1. THE PUBLIC OUTLOT SHALL BE SEEDED PER THE REQUIREMENTS SET FORTH IN THE CITY OF MADISON STANDARD SPECIFICATIONS. THE INFILTRATION BASIN BOTTOM SHALL BE SEEDED WITH DETENTION BASIN AND INFILTRATION BASIN BOTTOM SEED MIX. THE REMAINING PUBLIC OUTLOT SHOULD BE SEEDED WITH INFILTRATION BASIN SIDE SLOPED AND TALLGRASS PRAIRIE SEED MIX.
 2. SEE NOTES G-H ON SHEET C1.2 FOR ADDITIONAL LANDSCAPE REQUIREMENTS
 3. CONTRACTOR TO REFERENCE APPROVED EROSION CONTROL PLANS FOR INSTALLATION OF PROTECTION DEVICES FOR STORMWATER BASIN CONSTRUCTION
 4. CONTRACTOR TO INSTALL 8" OUTLET PIPE FROM WET POND FROM INVERT 1120.09 TO 1120.01 (70 LF). OUTLET PIPE TO BE UTILIZED DURING CONSTRUCTION FOR SEDIMENT BASIN. UPON COMPLETION OF CONSTRUCTION AND 70% VEGETATIVE COVER IN INFILTRATION AND WET POND, 8" PIPE SHALL BE CAPPED FOR FUTURE DEWATERING AND MAINTENANCE. CITY OF MADISON TO PROVIDE 45' BEND, REMAINING 12' OF 8" PIPE, AND CONNECTION TO S-40 INLET STRUCTURE.

EROSION MATTING

AFTER FINISH GRADING AND TOPSOILING AND FOR FINAL STABILIZATION, PROVIDE URBAN CLASS I, TYPE B EROSION MAT PER 'WISDOT EROSION CONTROL PAL' (OR EQUAL) IN ALL ROADSIDE DITCHES, DEFINED SWALES, SIDE SLOPES, BERMS AND ALL OTHER SLOPES 4:1 OR GREATER. INSTALL PER MANUFACTURERS SPECIFICATIONS.

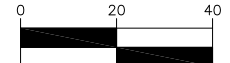
FOR THE THREE SITE SPILLWAYS, PROVIDE URBAN CLASS I, TYPE B EROSION MAT OVER CLASS III, TYPE C PER 'WISDOT EROSION CONTROL PAL' (OR EQUAL). SEE SITE DETAIL SHEET.

ALL EROSION MATTING SHALL MEET THE CITY OF MADISON STANDARD SPECIFICATIONS

LEGEND

---1151---	EXISTING CONTOUR
-1151-	PROPOSED CONTOUR
x 1156.5	PROPOSED ELEVATION
ST	PROPOSED STORM SEWER
---	PROPOSED ROAD CONTOURS BY CITY OF MADISON
1153.5	PROPOSED BUILDING PAD W/ FINISHED YARD GRADES
1162.5	

GRAPHIC SCALE

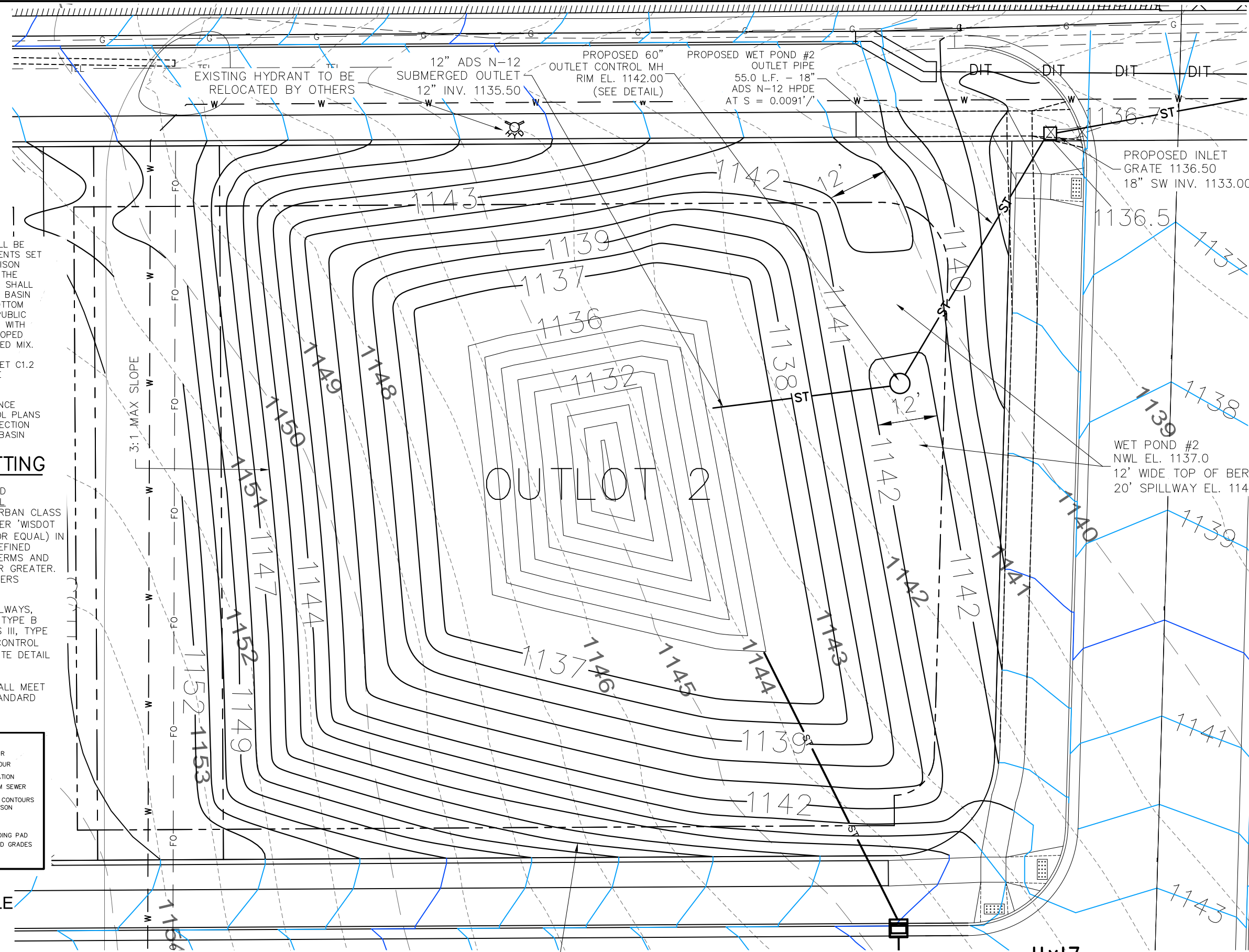


1 inch = 40 ft

11x17
WEST POND - GRADING PLAN



FOX KNOLL SUBDIVISION
 MADISON, WISCONSIN



- NOTES:
1. THE PUBLIC OUTLOT SHALL BE SEEDED PER THE REQUIREMENTS SET FORTH IN THE CITY OF MADISON STANDARD SPECIFICATIONS. THE INFILTRATION BASIN BOTTOM SHALL BE SEEDED WITH DETENTION BASIN AND INFILTRATION BASIN BOTTOM SEED MIX. THE REMAINING PUBLIC OUTLOT SHOULD BE SEEDED WITH INFILTRATION BASIN SIDE SLOPED AND TALLGRASS PRAIRIE SEED MIX.
 2. SEE NOTES G-H ON SHEET C1.2 FOR ADDITIONAL LANDSCAPE REQUIREMENTS
 3. CONTRACTOR TO REFERENCE APPROVED EROSION CONTROL PLANS FOR INSTALLATION OF PROTECTION DEVICES FOR STORMWATER BASIN CONSTRUCTION

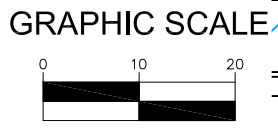
EROSION MATTING

AFTER FINISH GRADING AND TOPSOILING AND FOR FINAL STABILIZATION, PROVIDE URBAN CLASS I, TYPE B EROSION MAT PER 'WISDOT EROSION CONTROL PAL' (OR EQUAL) IN ALL ROADSIDE DITCHES, DEFINED SWALES, SIDE SLOPES, BERMS AND ALL OTHER SLOPES 4:1 OR GREATER. INSTALL PER MANUFACTURERS SPECIFICATIONS.

FOR THE THREE SITE SPILLWAYS, PROVIDE URBAN CLASS I, TYPE B EROSION MAT OVER CLASS III, TYPE C PER 'WISDOT EROSION CONTROL PAL' (OR EQUAL). SEE SITE DETAIL SHEET.

ALL EROSION MATTING SHALL MEET THE CITY OF MADISON STANDARD SPECIFICATIONS

LEGEND	
---1151---	EXISTING CONTOUR
—1151—	PROPOSED CONTOUR
X1156.5	PROPOSED ELEVATION
—ST—	PROPOSED STORM SEWER
—	PROPOSED ROAD CONTOURS BY CITY OF MADISON
1153.5	PROPOSED BUILDING PAD W/FINISHED YARD GRADES
1162.5	



CJE NO.: 2019R6-02
 NOVEMBER 27, 2023
 REV.:02/13/2024
 REV.:04/23/2024

EAST POND - GRADING PLAN

C2.2