

Madison, Wisconsin

CITY OF MADISON

CITY ENGINEERING DIVISION

DEPARTMENT OF PUBLIC WORKS

PLAN OF PROPOSED IMPROVEMENT

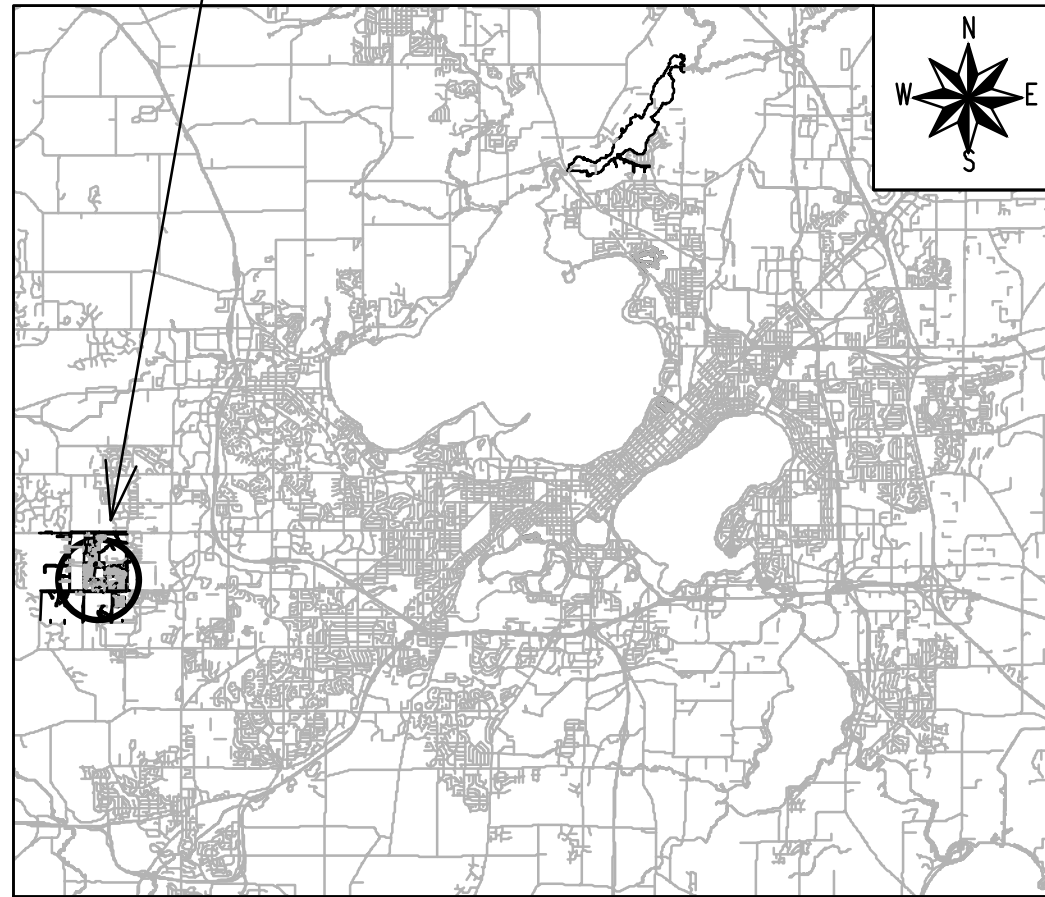
INDEX OF SHEETS

SHEET NO.	TITLE
1	
D1	STANDARD NOTES
D2	TYPICAL SECTIONS
O-1	OVERVIEW PLAN
P1-P2	PLAN & PROFILES
U1-U2	UTILITIES PLAN & PROFILES
USAN	SANITARY SEWER SCHEDULE
USTM	STORM SEWER SCHEDULE
W1-W2	WATER PLAN & PROFILES
W3	WATER IMPACT PLAN
W4	WATER ESTIMATE OF MATERIALS
X1-X5	CROSS SECTIONS
PBM-1	PROP. BOUNDARY MARKERS PLAN
MN-1	MAINTENANCE PLAN

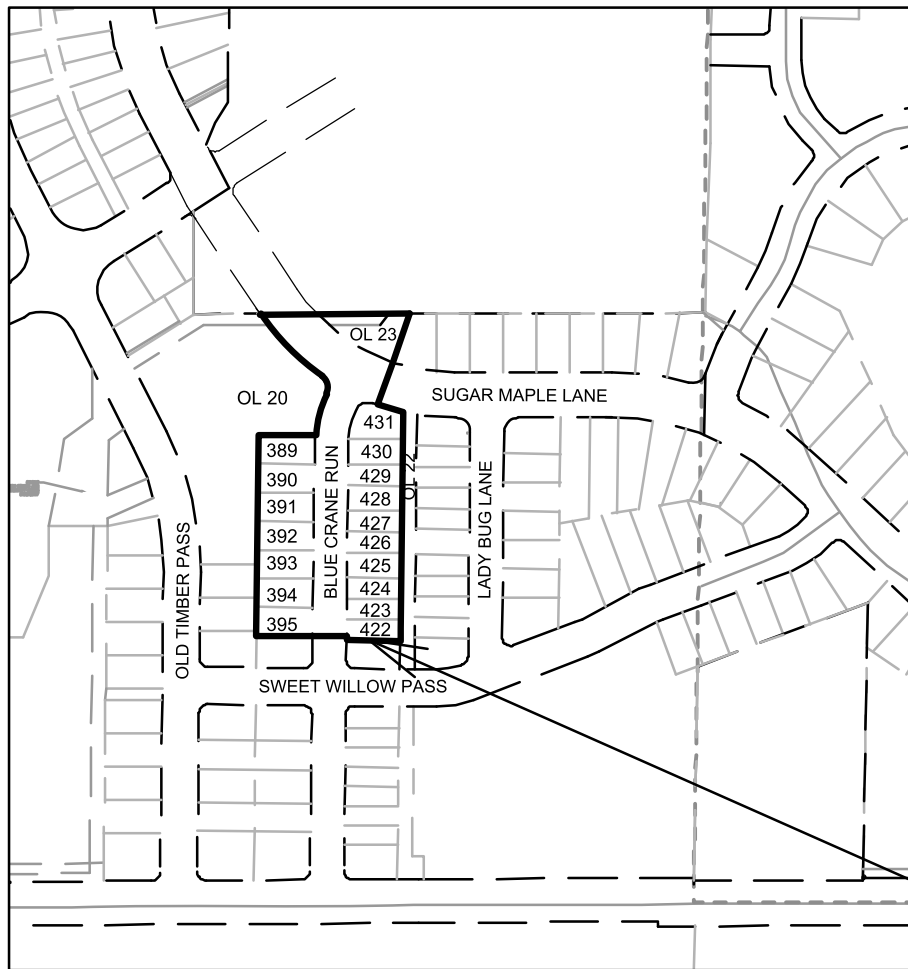
WESTERN ADDITION TO 1000 OAKS PHASE 4

CITY PROJECT NO. 14345
CONTRACT NO. 9221

PROJECT LOCATION



PHASE LIMITS



PUBLIC IMPROVEMENT PROJECT
APPROVED

APPROVED DATE: FEBRUARY 7, 2023

BY THE COMMON COUNCIL
OF MADISON, WISCONSIN

PUBLIC IMPROVEMENT DESIGN
APPROVED BY:

J. Mulla

Oct 20, 2023

City Engineer

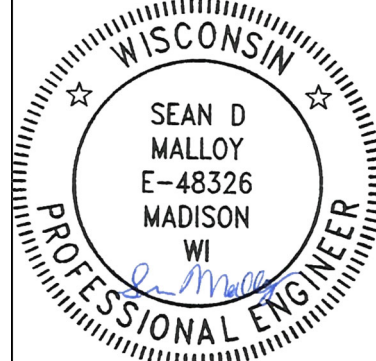
Date

STREET
DESIGNED BY:



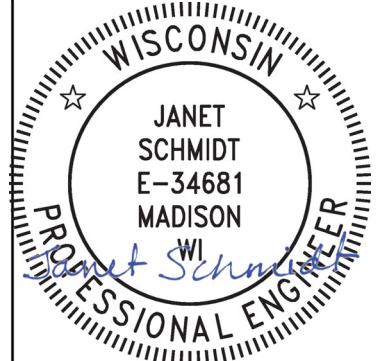
Oct 20, 2023

STREET GEOMETRY
DESIGNED BY:



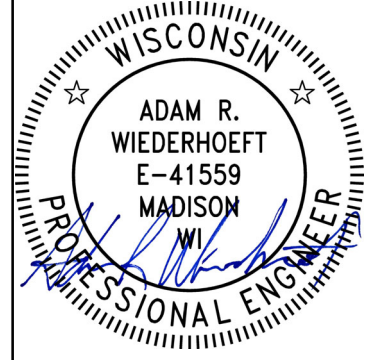
Oct 23, 2023

STORM SEWER
DESIGNED BY:



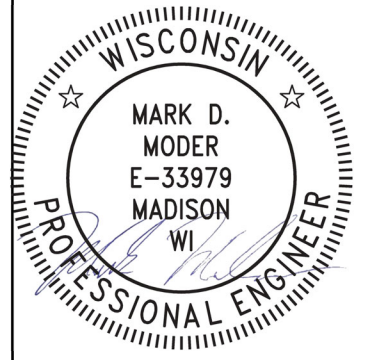
Oct 23, 2023

WATER
DESIGNED BY:



Oct 23, 2023

SANITARY SEWER
DESIGNED BY:



Oct 20, 2023

PLOT SCALE: 1 IN=1 FT_XREF

PLOT NAME: ----

REV. DATE: 9/22/2023 10:05 AM

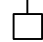


ORIGINATOR: CITY_OF_MADISON

ALL PROPOSED STREET TREE REMOVALS WITHIN THE RIGHT OF WAY SHALL BE REVIEWED BY CITY FORESTRY BEFORE THE PLAN COMMISSION MEETING. STREET TREE REMOVALS REQUIRE APPROVAL AND A TREE REMOVAL PERMIT ISSUED BY CITY FORESTRY. ANY STREET TREE REMOVALS REQUESTED AFTER THE DEVELOPMENT PLAN IS APPROVED BY THE PLAN COMMISSION OR THE BOARD OF PUBLIC WORKS AND CITY FORESTRY WILL REQUIRE A MINIMUM OF A 72-HOUR REVIEW PERIOD WHICH SHALL INCLUDE THE NOTIFICATION OF THE ALDERPERSON WITHIN WHO'S DISTRICT IS AFFECTED BY THE STREET TREE REMOVAL(S) PRIOR TO A TREE REMOVAL PERMIT BEING ISSUED.

AS DEFINED BY THE SECTION 107.13 OF CITY OF MADISON STANDARD SPECIFICATIONS FOR PUBLIC WORKS CONSTRUCTION: NO EXCAVATION IS PERMITTED WITHIN 5 FEET OF THE TRUNK OF THE STREET TREE OR WHEN CUTTING ROOTS OVER 3 INCHES IN DIAMETER. IF EXCAVATION IS NECESSARY, THE CONTRACTOR SHALL CONTACT MADISON CITY FORESTRY (266-4816) PRIOR TO EXCAVATION. CITY OF MADISON FORESTRY PERSONNEL SHALL ASSESS THE IMPACT TO THE TREE AND TO ITS ROOT SYSTEM PRIOR TO WORK COMMENCING. TREE PROTECTION SPECIFICATIONS CAN BE FOUND ON THE FOLLOWING WEBSITE: [HTTPS://WWW.CITYOFMADISON.COM/BUSINESS/PW/SPECS.CFM](https://www.cityofmadison.com/business/pw/specs.cfm)

DEVELOPER MUST SUBMIT A TRAFFIC CONTROL PLAN TO CITY TRAFFIC ENGINEERING AT LEAST 14 DAYS PRIOR TO THE START OF WORK. WORK SHALL NOT PROCEED UNTIL AN APPROVED TRAFFIC CONTROL PLAN IS IN PLACE.

CONTACT PROJECT ENGINEER AND STREET DESIGNER EMMA ALMY AT EALMY@CITYOFMADISON.COM FOR CAD AND ALIGNMENT DATA PRIOR TO STAKING.

CONVENTIONAL SIGNS	
FIELD VERIFY ALL UTILITY LOCATIONS	
GAS	—— G ——
STORM SEWER	—— ST ——
SANITARY SEWER	—— SAN ——
WATER	—— W ——
BURIED ELECTRIC	—— E ——
OVERHEAD ELECTRIC	—— OH ——
POWER POLE	
ADA COMPLIANT RAMP W/ DETECTABLE WARNING FIELD	
COMBUSTIBLE FLUIDS	

ALL PAVEMENT IN THE BLUE CRANE RUN RIGHTS-OF-WAY SHALL BE TYPE A PAVEMENT PER STANDARD DETAIL DRAWING 4.02.

ALL PAVEMENT IN THE SUGAR MAPLE LANE RIGHTS-OF-WAY SHALL BE TYPE C PAVEMENT PER STANDARD DETAIL DRAWING 4.02.

UNDERDRAINS SHALL BE INSTALLED PER STANDARD DETAIL DRAWING 4.05 FOR 75' ON EACH SIDE OF THE LOW POINT, OR TO THE NEAREST CURB HIGH POINT. ALL UNDERDRAIN SHALL BE WRAPPED.

ALL GUTTERS SHALL DRAIN WITH A MINIMUM GRADE OF 0.5% TOWARD STORM SEWER INLETS.

ALL DITCHES SHALL DRAIN WITH A MINIMUM GRADE OF 0.5%

THE CROSS SLOPE OF SIDEWALKS AND BARRIER FREE SIDEWALK CURB RAMPS SHALL TYPICALLY BE 1.5%. THE LONGITUDINAL GRADE OF BARRIER FREE SIDEWALK CURB RAMPS SHALL NOT EXCEED 8.33%. ALL SIDEWALK RAMPS SHALL BE CONSTRUCTED ACCORDING TO S.D.D. 3.04. AT ALL OTHER LOCATIONS THE LONGITUDINAL GRADE OF SIDEWALKS SHALL NOT EXCEED 5.0 % OR THE ADJACENT STREET GRADE WHICHEVER IS GREATER NOR BE LESS THAN 0.5% AND SHALL DRAIN TOWARD STORM SEWER INLETS. SIDE SLOPES WITHIN TEN FEET OF A PUBLIC SIDEWALK SHALL NOT EXCEED 4:1. ALL SIDEWALK AND SIDEWALK RAMP ELEVATIONS AND GRADES SHALL BE FIELD VERIFIED AND SET TO COMPLY WITH THE CITY OF MADISON STANDARD SPECIFICATIONS AND THE A.D.A. GUIDELINES.

CURB STATION AND OFFSETS SHALL BE TO THE EDGE OF PAVEMENT UNLESS OTHERWISE INDICATED. CURB ELEVATIONS SHALL BE TO THE EDGE OF PAVEMENT UNLESS OTHERWISE INDICATED.

POWER POLES AND OTHER OBSTRUCTIONS SHALL BE MOVED TO PROVIDE 2 FEET MINIMUM OF CLEAR DISTANCE FROM ANY FACE OF CURB OR EDGE OF SIDEWALK.

ANY INFORMATION SHOWN ON THIS PLAN, WHICH IS NOT PART OF THIS RIGHT-OF-WAY PROJECT, IS PRELIMINARY AND NOT FOR CONSTRUCTION.

THERE MAY BE EXISTING UTILITIES OR OTHER FEATURES WHICH ARE EITHER NOT SHOWN OR SHOWN INCORRECTLY ON THIS PLAN. IT IS THE RESPONSIBILITY OF THE DEVELOPER TO LOCATE AND IDENTIFY ALL UTILITIES AND TOPOGRAPHY WHICH MAY AFFECT THE CONSTRUCTION OF THESE IMPROVEMENTS.

ALL PERMANENT SIGNING AND POSTING WILL BE DETERMINED AND PROVIDED BY THE TRAFFIC ENGINEERING DIVISION, FOLLOWING CONSTRUCTION OF THESE IMPROVEMENTS.

THE DEVELOPER SHALL PROVIDE, INSTALL AND MAINTAIN ALL STREET END BARRICADES, SIGNING AND TRAFFIC CONTROL, AS REQUIRED BY THE CITY TRAFFIC ENGINEER.

PAVEMENT SAWCUTS SHALL BE AS DIRECTED BY THE CITY CONSTRUCTION ENGINEER. SAWCUTS SHOWN ON THE PLAN ARE APPROXIMATE.

CURB ON CUL DE SACS SHALL BE INSTALLED ACCORDING TO S.D.D 3.05.

ALL WORK IN THE RIGHT OF WAY AND PUBLIC EASEMENTS SHALL BE IN ACCORDANCE WITH THE CITY OF MADISON STANDARD SPECIFICATIONS FOR PUBLIC WORKS CONSTRUCTION LATEST EDITION.

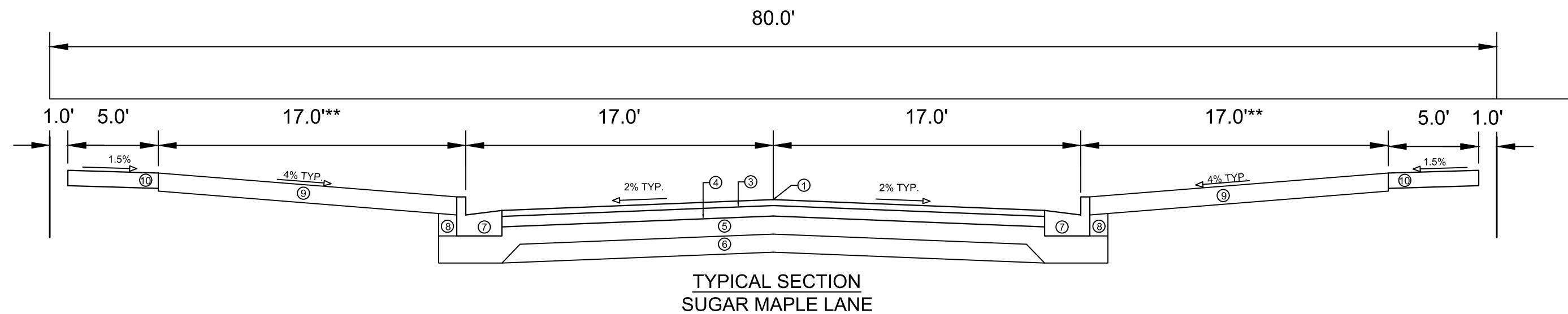
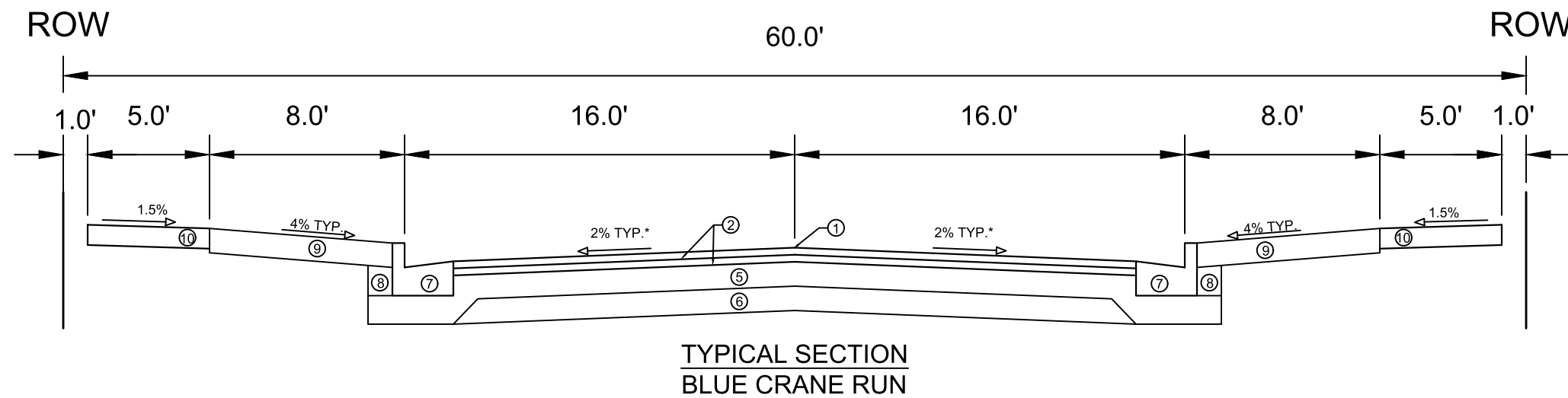
BY	DATE
MARK	14345
REVISION	10/7/2022 10:01 AM
Scale:	D-1

14345
MADISON, WI
9221
CONTRACT NO:

STANDARD NOTES
WESTERN ADDITION TO 1000 OAKS PHASE 4
M:\DESIGN\Projects\14345\CAD\Streets\14345EN-D\Streets.dwg



14345
D-1



SPECIAL NOTES:

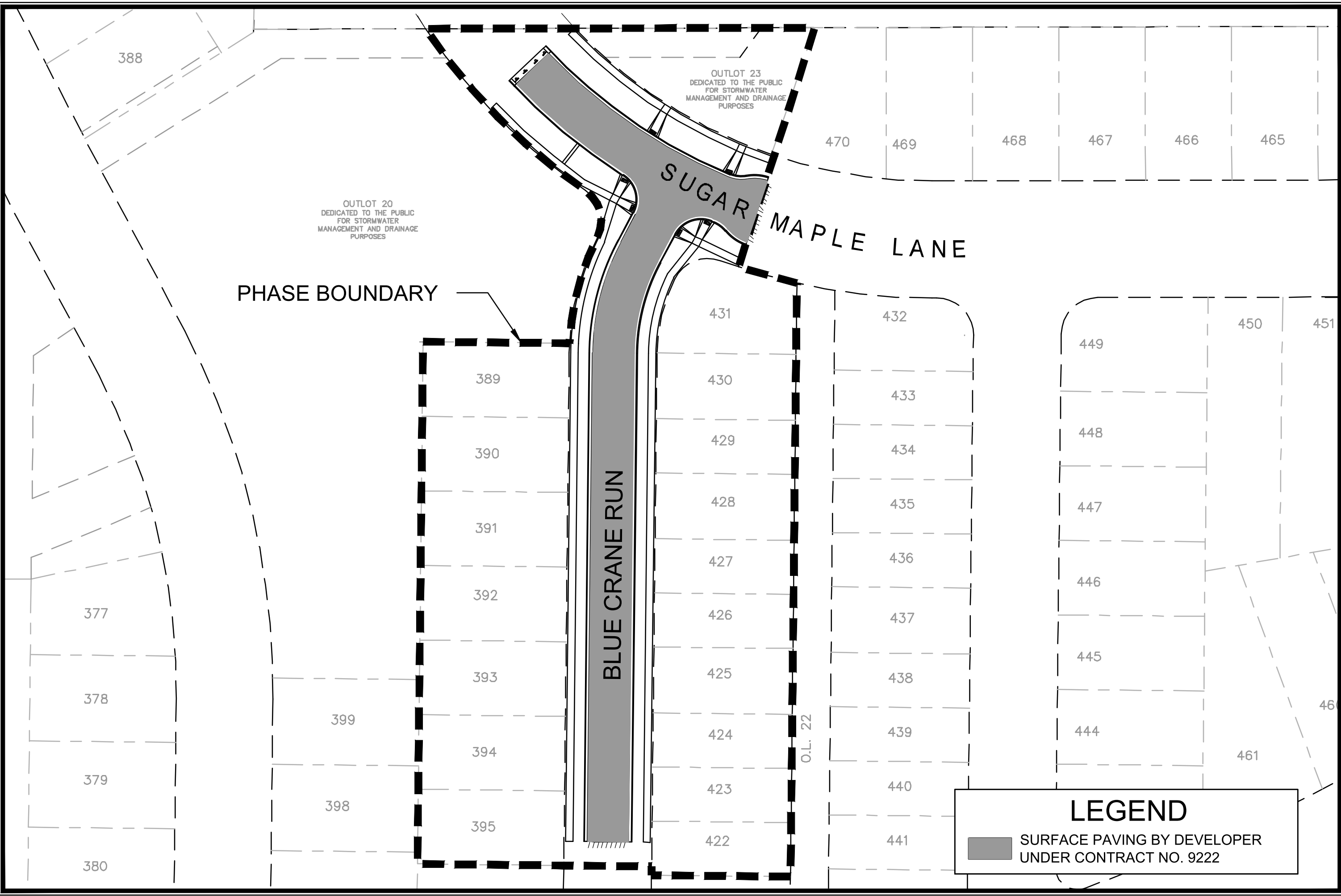
- * SEE X-SHEETS FOR CROSS SLOPES
- ** SEE P-SHEETS FOR TERRACE WIDTH
- *** THE DEVELOPER SHALL BE RESPONSIBLE FOR SURFACE PAVING.
SEE CONTRACT NO. 9222

- ① POINT REFERRED TO ON PROFILE
- ② 1.75" H.M.A. PAVEMENT- TYPE 4 LT 58-28 S
- ③ 2.0" H.M.A. PAVEMENT- TYPE 4 MT 58-28 S
- ④ 3.5" H.M.A. PAVEMENT- TYPE 3 MT 58-28 S
- ⑤ 6" CRUSHED AGGREGATE BASE COURSE GRADATION 2
- ⑥ 6" CRUSHED AGGREGATE BASE COURSE GRADATION 1
- ⑦ CONCRETE CURB AND GUTTER TYPE 'A'.
- ⑧ FILL
- ⑨ 6" TOPSOIL, SEED AND MATTING
- ⑩ 5" CONCRETE SIDEWALK

14345
 MADISON, WI
 CONTRACT NO: 9221
 WESTERN ADDITION TO 1000 OAKS PHASE 4
 M:\DESIGN\Projects\14345\CAD\Streets\14345EN-D\Streets.dwg




REVISION	DATE
MARK	BY
14345	10/11/11 AM
14345	Scale:
D-2	



MARK	REVISION	DATE	BY
14345	Design: EEA	Date: 2/6/2023 3:15 PM	Scale: O-1

14345
 MADISON, WI
 CONTRACT NO: 9221
 WESTERN ADDITION TO 1000 OAKS - PHASE 4
 M:\DESIGN\Projects\14345\CAD\Survey\14345SVY-Ownership.dwg

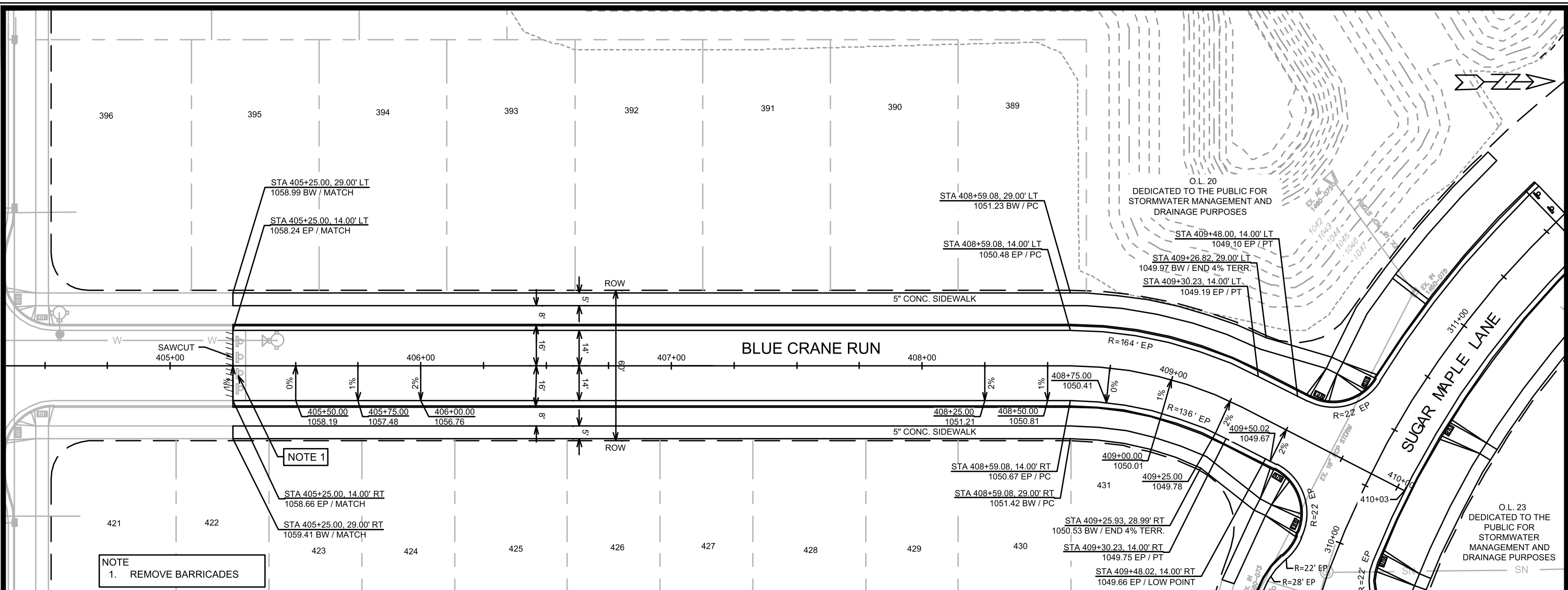
OVERVIEW PLAN



14345
 O-1

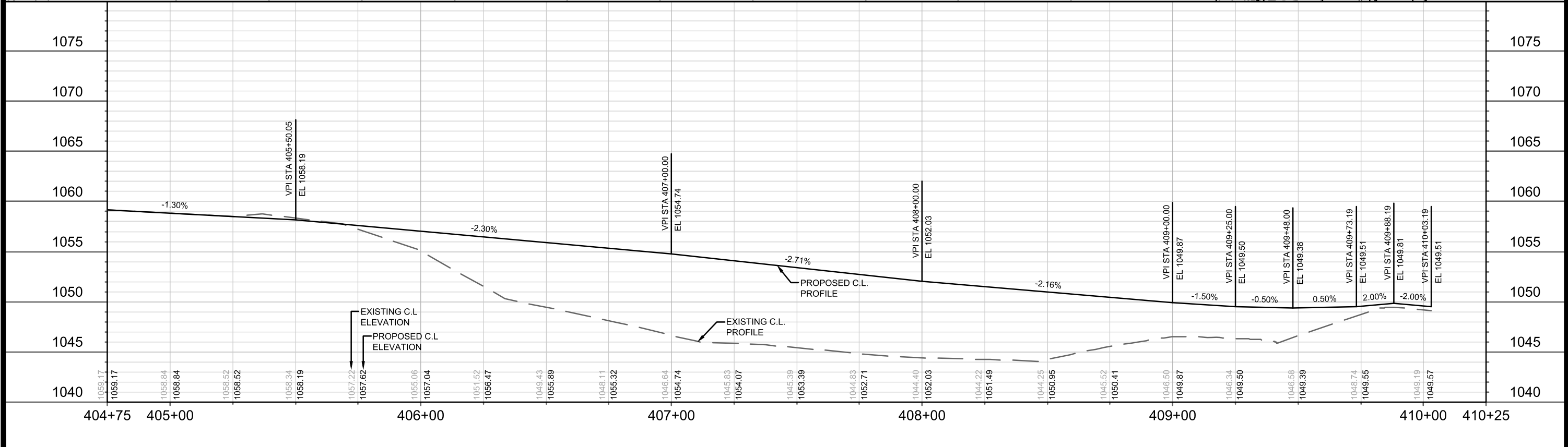
LEGEND

 SURFACE PAVING BY DEVELOPER UNDER CONTRACT NO. 9222



NOTE
1. REMOVE BARRICADES

NOTE 1



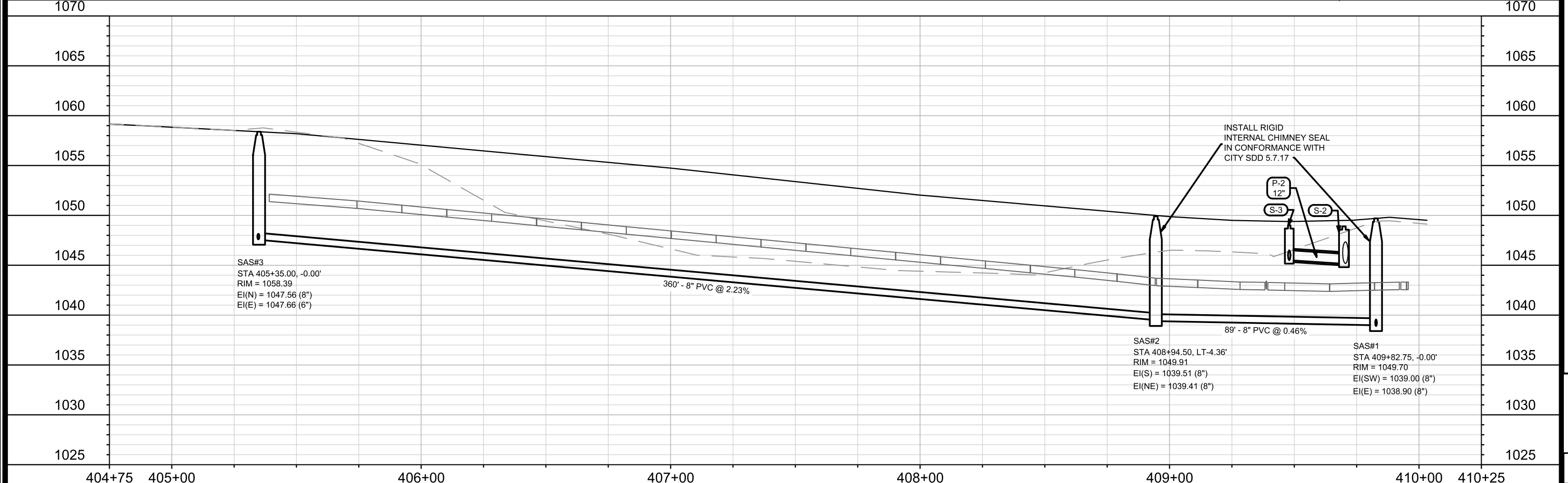
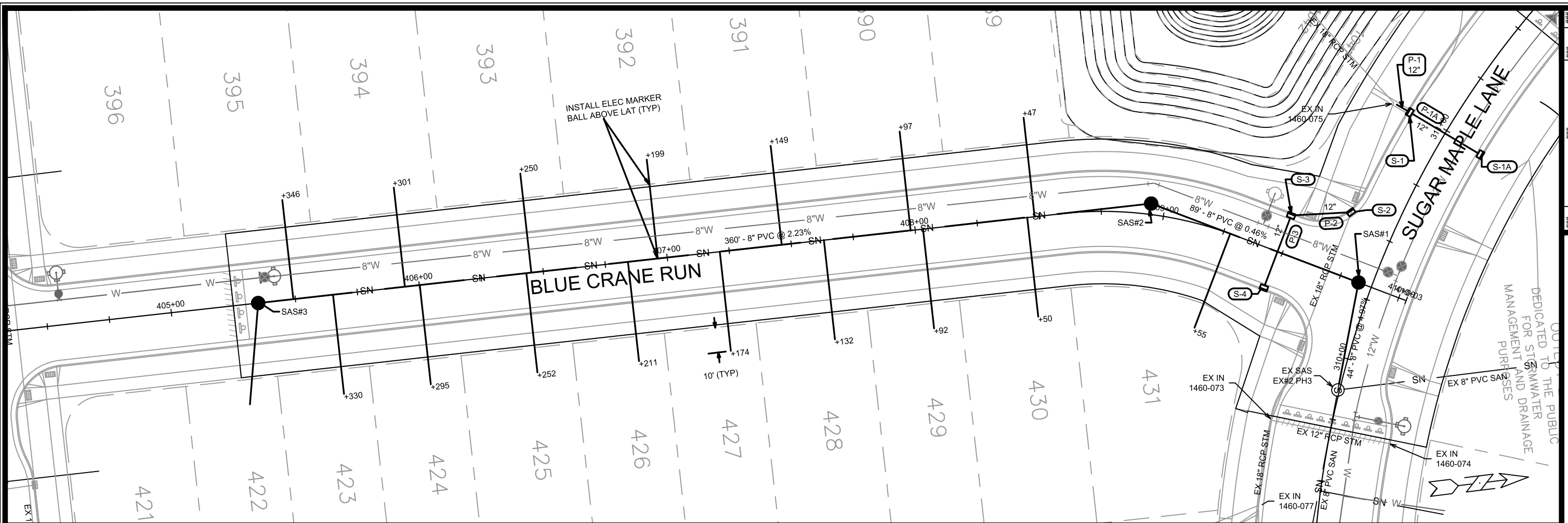
DATE	BY
###	###
REVISION	###
MARK	###
Designated By: EEA	Date: 12/22/2022 9:28 AM
14345	14345

14345
MADISON, WI
9221
CONTRACT NO:

PLAN & PROFILE - BLUE CRANE RUN
WESTERN ADDITION TO 1000 OAKS - PHASE 4

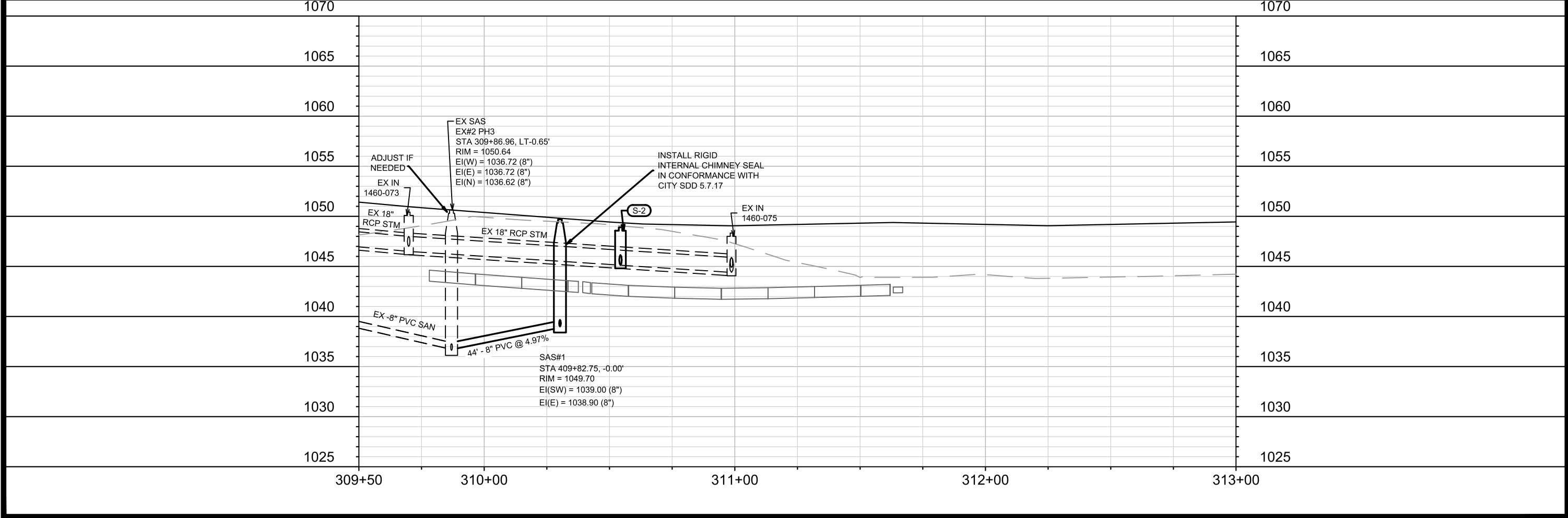
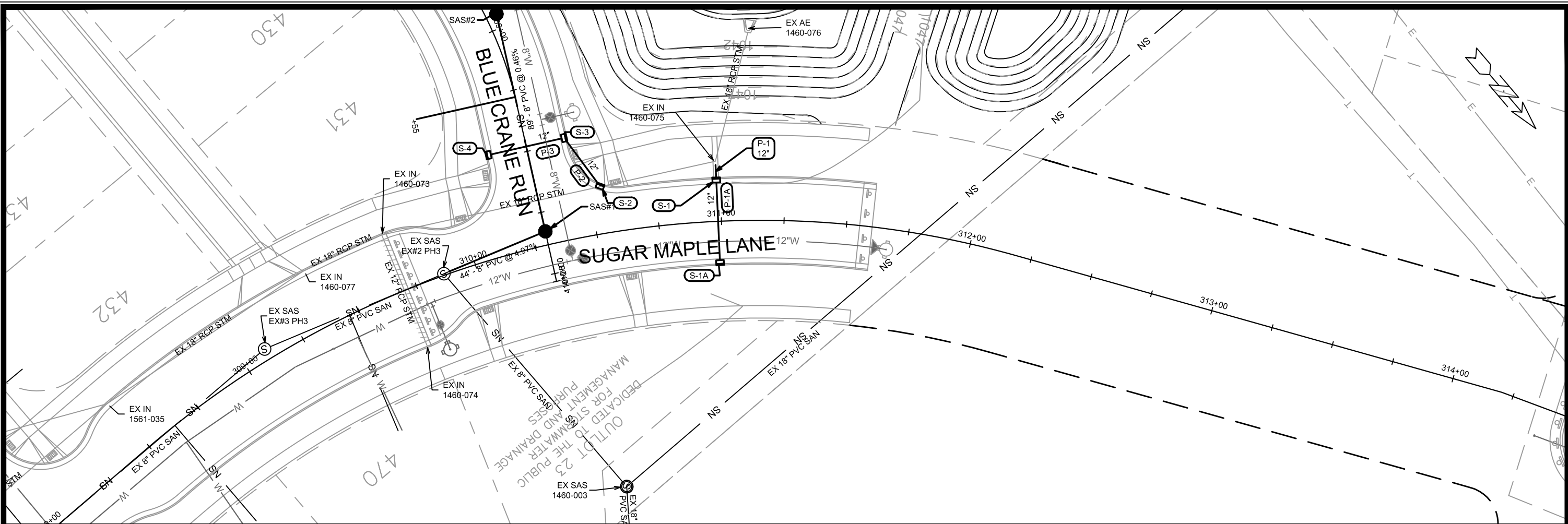
M:\DESIGN\Projects\14345\CAD\Streets\14345EN-PnP.dwg

14345
P-2



14345	9221	U-1
BLUE CRANE RUN - SANITARY SEWER PLAN & PROFILE WESTERN ADDITION TO 1000 OAKS PHASE 4		
M:\DESIGN\Projects\14345\CAD\Sewers\14345SWR-PipeNetwork.dwg		
14345 U-1		
###	###	###
###	###	###
###	###	###
###	###	###
###	###	###
###	###	###
###	###	###
###	###	###
###	###	###
###	###	###
###	###	###
###	###	###





MARK	REVISION	DATE	BY
###	###	###	###
###	###	###	###
###	###	###	###
###	###	###	###
###	###	###	###

Scale: 1"=40'

Designed By: EEA
Date: 12/2/2022

14345

14345

MADISON, WI

9221

CONTRACT NO:

14345

WESTERN ADDITION TO 1000 OAKS PHASE 4

M:\DESIGN\Projects\14345\CAD\Sewers\14345SWR-PipeNetwork.dwg

SUGAR MAPLE LANE- SANITARY SEWER PLAN & PROFILE

U-2

SANITARY SEWER SCHEDULE

WESTERN ADD TO THOUSAND OAKS PH 4 PROJECT NO. 14345	SHEET NO. U-SAN
SANITARY SEWER SCHEDULE	
CITY OF MADISON	

PROPOSED SANITARY STRUCTURES

SAS NO.	STATION	LOCATION (OFFSET)	TOP OF CASTING	E.I.	DEPTH (FT)	NOTES
BLUE CRANE RUN						
SAS#1	409+82.75	CL	1049.70	1038.90	10.80	(1)
SAS#2	408+94.50	LT-4.36	1049.91	1039.41	10.50	(1)
SAS#3	405+35.00	CL	1058.39	1047.56	10.83	-

PROPOSED SANITARY PIPES

FROM (DNSTM)	TO (UPSTM)	DWNSTRM E.I.	UPSTRM E.I.	PLAN LGTH (FT)	SLOPE (%)	PIPE SIZE	PVC TYPE	NOTES
BLUE CRANE RUN								
EX SAS#2 PH 3	SAS#1	1036.72	1038.90	44	4.97%	8"		-
SAS#1	SAS#2	1039.00	1039.41	89	0.46%	8"		-
SAS#2	SAS#3	1039.51	1047.56	360	2.23%	8"		-

NOTES:

- ALL STRUCTURES SHALL BE SUBMITTED TO CITY ENGINEERING FOR APPROVAL. CONTACT ELIA E ACOSTA OF CITY ENGINEERING AT (608) 266-4096 FOR PRECAST APPROVALS, FAX SHOP DRAWINGS TO (608)264-9275, OR EMAIL SHOP DRAWINGS TO EACOSTA@CITYOFMADISON.COM.

(1) INSTALL RIGID INTERNAL CHIMNEY SEAL IN CONFORMANCE WITH CITY SDD 5.7.17

STORM SEWER SCHEDULE

WESTERN ADD TO THOUSAND OAKS PH 4	SHEET NO.
PROJECT NO. 14345	U-STM
STORM SEWER SCHEDULE	
CITY OF MADISON	

PROPOSED STORM STRUCTURES

STRUC. NO.	STATION	LOCATION (OFFSET)	TYPE	TOP OF CASTING	E.I.	DEPTH	NOTES
SUGAR MAPLE LANE							
S-1	310+98.69	LT-16.50	H INLET	1,049.13	1,045.16	3.97	LP; W/ R-3067-7004-VB
S-1A	310+98.69	RT-16.50	H INLET	1,049.13	1,045.36	3.77	LP; W/ R-3067-7004-VB
S-2	310+53.75	LT-19.00	SADDLED H INLET	1,049.38			W/ R-3067-7004-V
BLUE CRANE RUN							
S-3	409+47.98	LT-15.50	H INLET	1,049.48	1,045.50	3.98	LP; W/ R-3067-7004-VB
S-4	409+48.02	RT-15.50	H INLET	1,050.04	1,046.06	3.98	LP; W/ R-3067-7004-VB

PROPOSED STORM PIPES

PIPE NO.	FROM (DNSTM)	TO (UPSTM)	DISCH. E.I.	INLET E.I.	PLAN (PAY) LGTH (FT)	PIPE LGTH (FT)	SLOPE (%)	PIPE SIZE	TYPE	NOTES
SUGAR MAPLE LANE										
P-1	EX IN 1460-075	S-1	1044.90	1045.16	7	7	3.71%	12"	TYPE II	-
P-1A	S-1	S-1A	1045.16	1045.36	33	33	0.61%	12"	TYPE I	-
BLUE CRANE RUN										
P-2	S-2	S-3	1045.14	1045.50	25	26	1.38%	12"	TYPE II	-
P-3	S-3	S-4	1045.50	1046.06	31	32	1.75%	12"	TYPE I	-

SPECIFIC NOTES:

STANDARD NOTES:

-PLAN LENGTH (PAY LENGTH) IS FROM CENTER OF STRUCTURE TO CENTER OF STRUCTURE. PIPE LENGTH IS ACTUAL LENGTH OF PIPE FROM STRUCTURE WALL TO STRUCTURE WALL. SLOPE CALCULATED USING PIPE LENGTH.

- ABBREVIATIONS: AE = APRON ENDWALL; RCP = REINFORCED CONCRETE PIPE; HERCP = HORIZONTAL ELLIPTICAL REINFORCED CONCRETE PIPE; DNA = DOES NOT APPLY; SAS = SEWER ACCESS STRUCTURE; LP = LOW POINT INLET STRUCTURE; FP = FIELD Poured STRUCTURE; TR = TOP OF CONCRETE ROOF; NCM = NO CROWN MATCH FOR PIPES; UD = UNDERDRAIN

- APPROXIMATE DISCHARGE E.I. GIVEN, ADJUST E.I. AND PIPE SLOPE IN THE FIELD.

- TOP OF CASTING GRADE GIVEN IS THE TOP OF CURB FOR INLET STRUCTURES AND THE FLOWLINE OF THE CLOSED CASTING FOR SAS's.

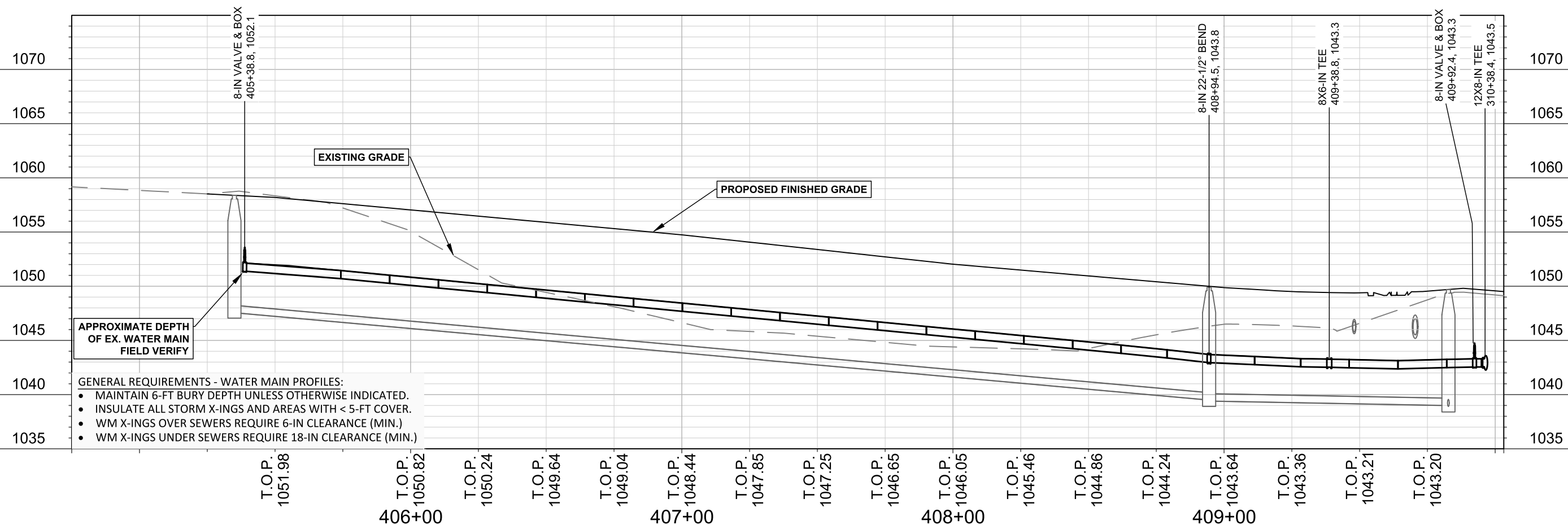
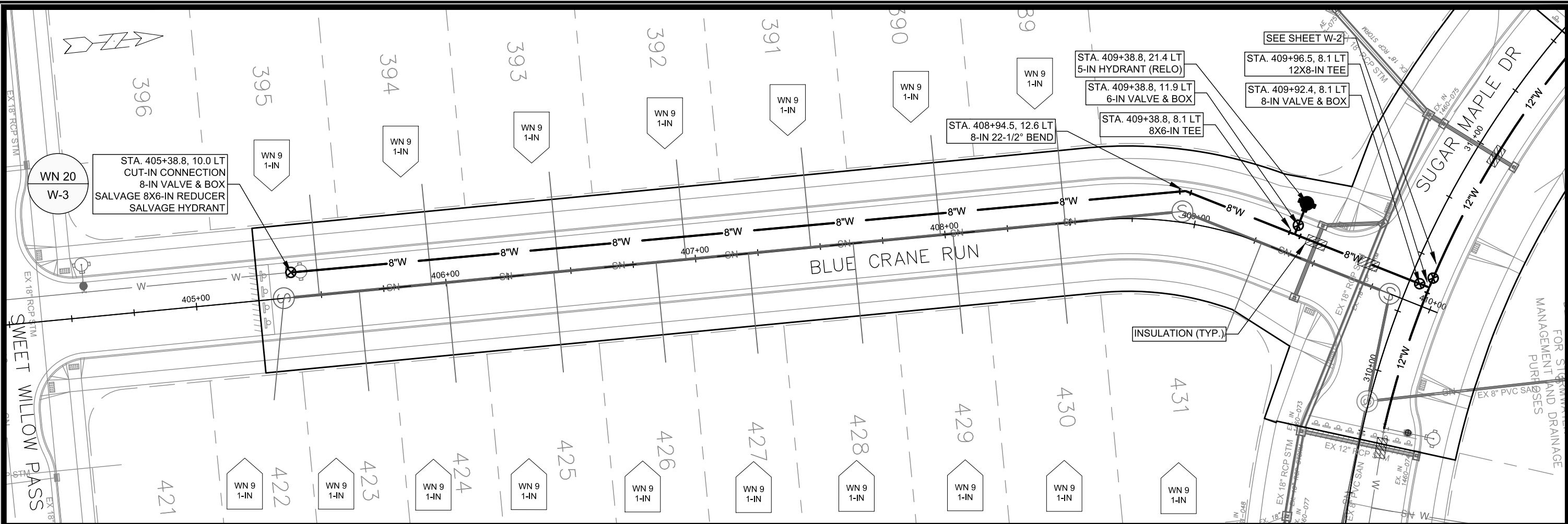
- ALL REINFORCED CONCRETE PIPES TO BE CLASS III UNLESS OTHERWISE NOTED.

- SURVEYOR TO CONFIRM THAT ALL INLET STATION / OFFSETS LINE UP WITH PROPOSED CURB AND GUTTER.

-ALL FIELD Poured SAS STORM STRUCTURES SHALL BE CONSTRUCTED IN ACCORDANCE WITH STANDARD DETAIL DRAWING 5.7.3. ALL PRECAST SAS STORM STRUCTURES SHALL BE CONSTRUCTED IN ACCORDANCE WITH STANDARD DETAIL DRAWING 5.7.5.

- ALL STRUCTURES CALLED OUT AS FIELD Poured SHALL BE FIELD Poured. ALL OTHER STRUCTURES (NOT INDICATED AS FIELD Poured) SHALL BE SUBMITTED TO CITY ENGINEERING FOR APPROVAL IF PRECAST STRUCTURES ARE PREFERRED. CONTACT ELIA E ACOSTA OF CITY ENGINEERING AT (608) 266-4096 FOR STORM SEWER PRECAST APPROVALS, FAX SHOP DRAWINGS TO (608)264-9275, OR EMAIL SHOP DRAWINGS TO EACOSTA@CITYOFMADISON.COM.

-FOR SWM PRECAST APPROVALS CONTACT PHIL GAEBLER AT (608) 266-4059 OR EMAIL SWM SHOP DRAWINGS TO PGAEBLER@CITYOFMADISON.COM



- GENERAL REQUIREMENTS - WATER MAIN PROFILES:
- MAINTAIN 6-FT BURY DEPTH UNLESS OTHERWISE INDICATED.
 - INSULATE ALL STORM X-INGS AND AREAS WITH < 5-FT COVER.
 - WM X-INGS OVER SEWERS REQUIRE 6-IN CLEARANCE (MIN.)
 - WM X-INGS UNDER SEWERS REQUIRE 18-IN CLEARANCE (MIN.)

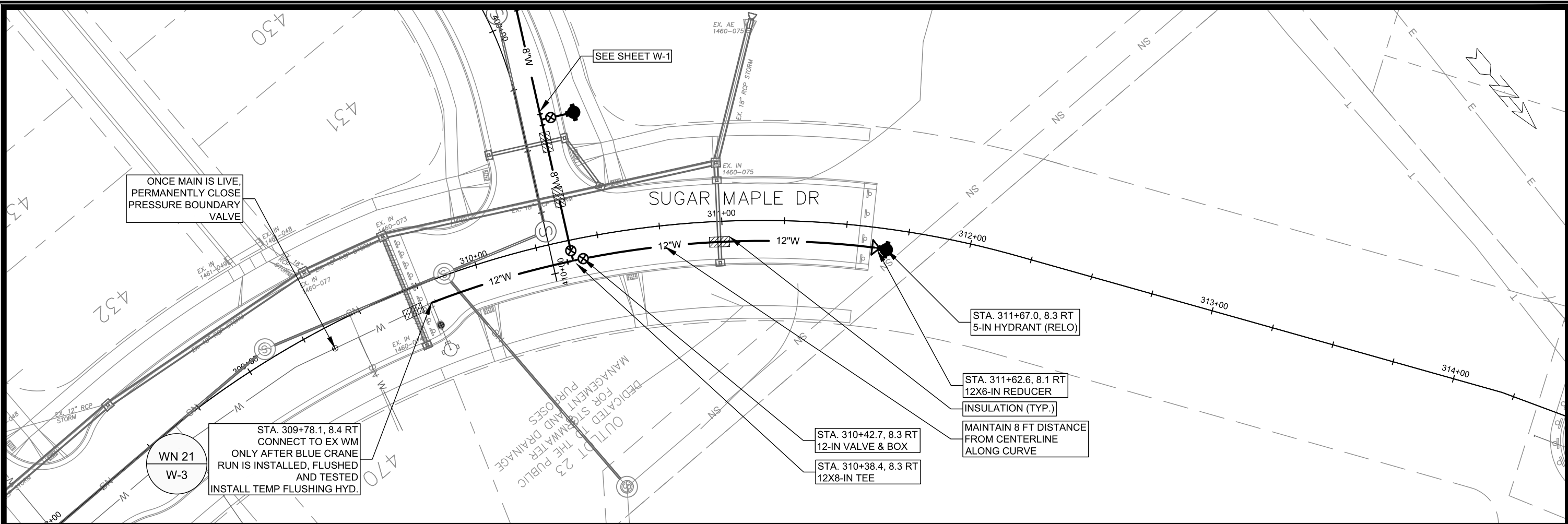
SCALE: 1" = 40'
 DESIGNED BY: RJN
 MADISON WATER UTILITY
 119 E OLIN AVE, MADISON, WI 53713
 PRINTING DATE: 9/25/23

CONTRACT NO: 9221

WESTERN ADDITION TO THOUSAND OAKS PHASE 4
 WATER PLAN & PROFILE BLUE CRANE RUN
 CITY OF MADISON, WISCONSIN



14345
 W-1



ONCE MAIN IS LIVE,
PERMANENTLY CLOSE
PRESSURE BOUNDARY
VALVE

STA. 309+78.1, 8.4 RT
CONNECT TO EX WM
ONLY AFTER BLUE CRANE
RUN IS INSTALLED, FLUSHED
AND TESTED
INSTALL TEMP FLUSHING HYD.

OUTLET TO THE PUBLIC
DEDICATED FOR STORMWATER
MANAGEMENT PURPOSES

STA. 311+67.0, 8.3 RT
5-IN HYDRANT (RELO)

STA. 311+62.6, 8.1 RT
12X6-IN REDUCER

INSULATION (TYP.)

MAINTAIN 8 FT DISTANCE
FROM CENTERLINE
ALONG CURVE

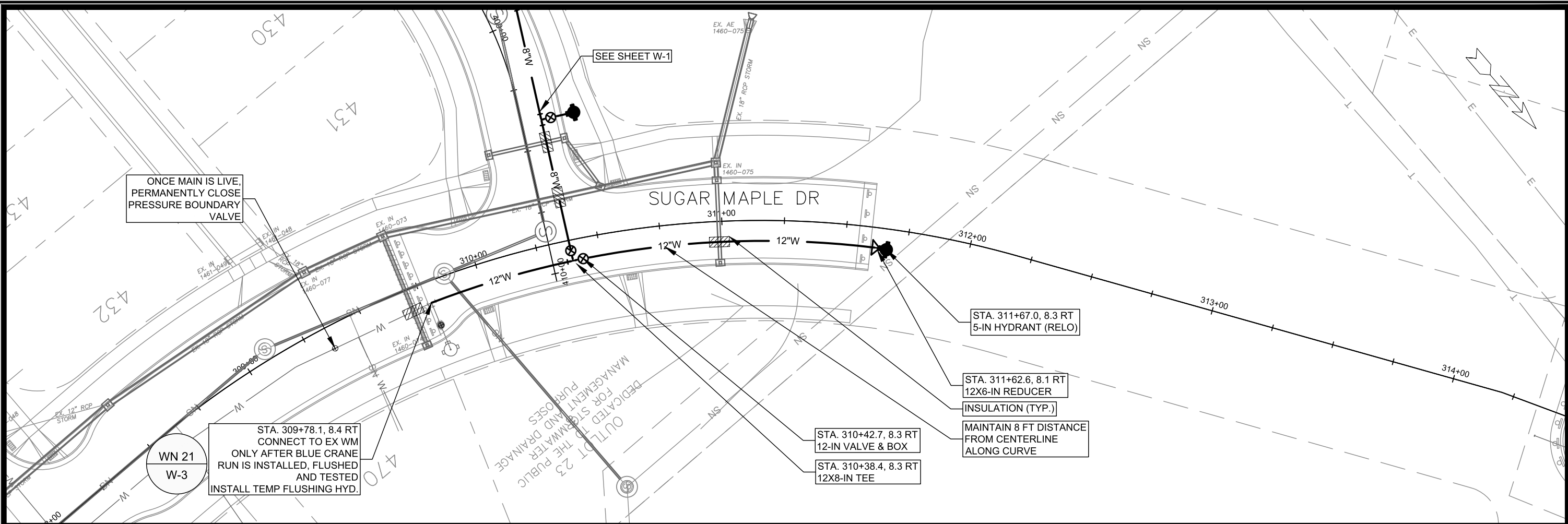
STA. 310+42.7, 8.3 RT
12-IN VALVE & BOX

STA. 310+38.4, 8.3 RT
12X8-IN TEE

WN 21
W-3

SEE SHEET W-1

SUGAR MAPLE DR



APPROXIMATE DEPTH
OF EX. WATER MAIN
FIELD VERIFY

- GENERAL REQUIREMENTS - WATER MAIN PROFILES:
- MAINTAIN 6-FT BURY DEPTH UNLESS OTHERWISE INDICATED.
 - INSULATE ALL STORM X-INGS AND AREAS WITH < 5-FT COVER.
 - WM X-INGS OVER SEWERS REQUIRE 6-IN CLEARANCE (MIN.)
 - WM X-INGS UNDER SEWERS REQUIRE 18-IN CLEARANCE (MIN.)

T.O.P. 1044.19
310+00
T.O.P. 1043.73
T.O.P. 1043.26
T.O.P. 1042.93
T.O.P. 1042.83
T.O.P. 1042.95
T.O.P. 1043.12

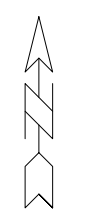
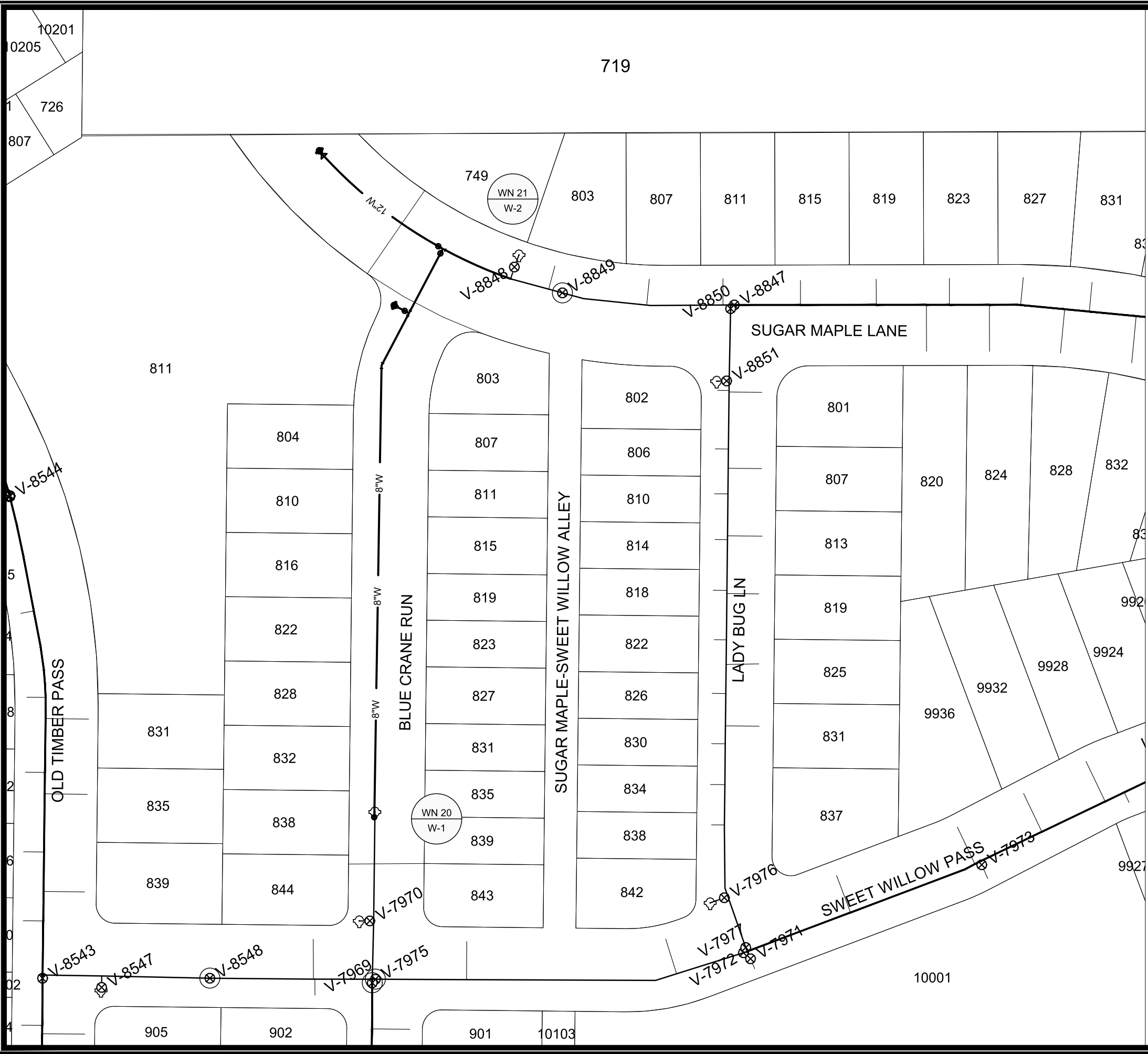
WESTERN ADDITION TO THOUSAND OKAS PHASE 4
WATER PLAN & PROFILE SUGAR MAPLE LANE
CITY OF MADISON, WISCONSIN

SCALE: 1" = 40'
DESIGNED BY: RJN
MADISON WATER UTILITY
119 E OLIN AVE, MADISON, WI 53713
PRINTING DATE: 9/25/23

CONTRACT NO: 9221



14345
W-2



1" = 80'



WN 20: CUT-IN CONNECTION; BLUE CRANE RUN AT SWEET WILLOW PASS.

- ISOLATION VALVES:
- V-7969 (SWEET WILLOW AT BLUE CRANE)
 - V-7975 (SWEET WILLOW AT BLUE CRANE.)
 - V-8548 (SWEET WILLOW PASS)

PROVIDE NOTICE:

- 844, 902 BLUE CRANE RUN

WN 21: CUT-IN CONNECTION; SUGAR MAPLE AT BLUE CRANE RUN.

- ISOLATION VALVES:
- V-8849 (803 SUGAR MAPLE LN)
- PROVIDE NOTICE:
- 803 SUGAR MAPLE LN.

DISCLAIMER NOTE:
 THE WATER IMPACT PLAN IS PROVIDED FOR REFERENCE PURPOSES TO AID PLANNING CONNECTION POINT ISOLATION AND PREPARING NOTIFICATION LISTS DURING PLANNED OUTAGES. REQUEST ANY ALTERNATIVE CONNECTION METHODS IN WRITING, PER SPECS.

SCALE: 1" = 80'
 DESIGNED BY: RJN
 MADISON WATER UTILITY
 119 E OLIN AVE, MADISON, WI 53713
 PRINTING DATE: 9/25/23

WESTERN ADDITION TO 1000 OAKS - PHASE 4
 WATER IMPACT PLAN
 CITY OF MADISON, WISCONSIN
 CONTRACT NO: 9221



14345
 W-3

M:\DESIGN\PROJECTS\114345\CAD\WATER\114345 WU-IMPACT\PLAN.DWG



CONSTRUCTION NOTES:

- | | |
|--------------------------------------------------------------------------------------------------------------------------------------------------------------------------------------------------------------------------------------------------------------------------------------------------------------------------------------------------------------------------------------------------------------------------------------------------------------------|-------------------------------------------------------------------------------------------------------------------------------------------------------------------------------------------------------------------------------------------------------------------------------------------------------------------------------------------------------------------------------------------------------------------------------------------------------------------------------------------------------------------------------------------------------------------------------------------------------------------------------------------------------------------------------------------------------------------------------------------------------------------------------------------------------------------------------------------------------------------------------------------------------------------------------------------------------------|
| <ol style="list-style-type: none"> CONSTRUCT NEW WATER MAIN 6.0' BELOW FINISHED GRADE, UNLESS OTHERWISE NOTED. INSULATE MAIN WITH POLYSTYRENE BOARD AT UTILITY CROSSINGS OR OTHER AREAS IDENTIFIED BY ENGINEER AS HAVING INADEQUATE COVER. VERIFY SIZE OF EXISTING WATER SERVICES AND RECONNECT SERVICES AS INDICATED. MINIMIZE DISRUPTION OF SERVICE TO CUSTOMERS. NOTIFY PER CONTRACT REQUIREMENTS OF ANY PLANNED WATER OUTAGE. | <p>WN1 REPLACE THE EXISTING LEAD SERVICE WITH A NEW COPPER SERVICE.</p> <p>WN-2 EXTEND AND RECONNECT THE EXISTING COPPER SERVICE TO THE NEW WATER MAIN.</p> <p>WN-3 EXISTING SERVICE TO BE ABANDONED WHEN THE WATER MAIN IS CUT OFF.</p> <p>WN-4 DISCONNECT FROM THE OLD WATER MAIN AND RECONNECT THE EXISTING COPPER WATER SERVICE LATERAL TO THE NEW WATER MAIN.</p> <p>WN-5 RELOCATE THE EXISTING FIRE HYDRANT.</p> <p>WN-6 ABANDON WATER VALVE ACCESS STRUCTURE.</p> <p>WN-7 FURNISH AND INSTALL THE NEW TOP SECTION FOR THE WATER ACCESS STRUCTURE.</p> <p>WN-8 ABANDON THE VALVE BOX.</p> <p>WN-9 FURNISH THE DITCH, COMPACTION, AND ALL MATERIALS AND LABOR FOR THE INSTALLATION OF NEW SERVICE LATERAL.</p> <p>WN-10 REMOVE AND SALVAGE EXISTING HYDRANT</p> <p>WN-11 REPLACE THE EXISTING COPPER SERVICE WITH A COPPER SERVICE</p> <p>WN-20+ SEE WATER IMPACT PLAN FOR CONNECTION POINT ISOLATION AND WATER SHUT-OFF NOTIFICATION INFORMATION.</p> |
|--------------------------------------------------------------------------------------------------------------------------------------------------------------------------------------------------------------------------------------------------------------------------------------------------------------------------------------------------------------------------------------------------------------------------------------------------------------------|-------------------------------------------------------------------------------------------------------------------------------------------------------------------------------------------------------------------------------------------------------------------------------------------------------------------------------------------------------------------------------------------------------------------------------------------------------------------------------------------------------------------------------------------------------------------------------------------------------------------------------------------------------------------------------------------------------------------------------------------------------------------------------------------------------------------------------------------------------------------------------------------------------------------------------------------------------------|

***ESTIMATE OF MATERIALS SUPPLIED BY CONTRACTOR:**

PAY ITEM	DESCRIPTION	QUANTITY	UNIT
70002	FURNISH AND INSTALL 6-INCH PIPE & FITTINGS	20	LNFT
70003	FURNISH AND INSTALL 8-INCH PIPE & FITTINGS	500	LNFT
70005	FURNISH AND INSTALL 12-INCH PIPE & FITTINGS	200	LNFT
70031	FURNISH AND INSTALL 6-INCH WATER VALVE	1	EACH
70032	FURNISH AND INSTALL 8-INCH WATER VALVE	2	EACH
70034	FURNISH AND INSTALL 12-INCH WATER VALVE	1	EACH
70040	FURNISH AND INSTALL AND SALVAGE HYDRANT	1	EACH
70050	FURNISH AND INSTALL 1-INCH SERVICE LATERALS	17	EACH
70101	FURNISH AND INSTALL STYROFOAM	5	EACH
71135	8-IN 22-1/2° BEND	1	EACH
71164	12X6-IN REDUCER	1	EACH
71218	12X8-IN TEE	1	EACH

***ESTIMATE OF MATERIALS SUPPLIED BY WATER UTILITY:**

NONE

***ESTIMATE OF MATERIALS SALVAGED & REUSED:**

5-IN HYDRANT	2	EACH
8X6-IN REDUCER	1	EACH

* ESTIMATE OF MATERIALS IS FOR INFORMATION ONLY. ENGINEER DOES NOT GUARANTEE ACCURACY OF MATERIAL TAKE-OFF.

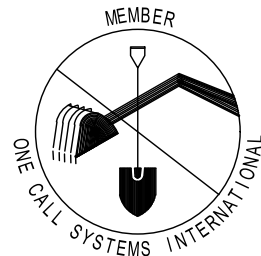
TO OBTAIN LOCATION OF PARTICIPANTS' UNDERGROUND FACILITIES BEFORE YOU DIG IN WISCONSIN

CALL DIGGERS HOTLINE TOLL FREE 811 OR 1-800-242-8511

FAX-A-LOCATE 1-800-338-3860

TDD (FOR HEARING IMPAIRED) 1-800-542-2289

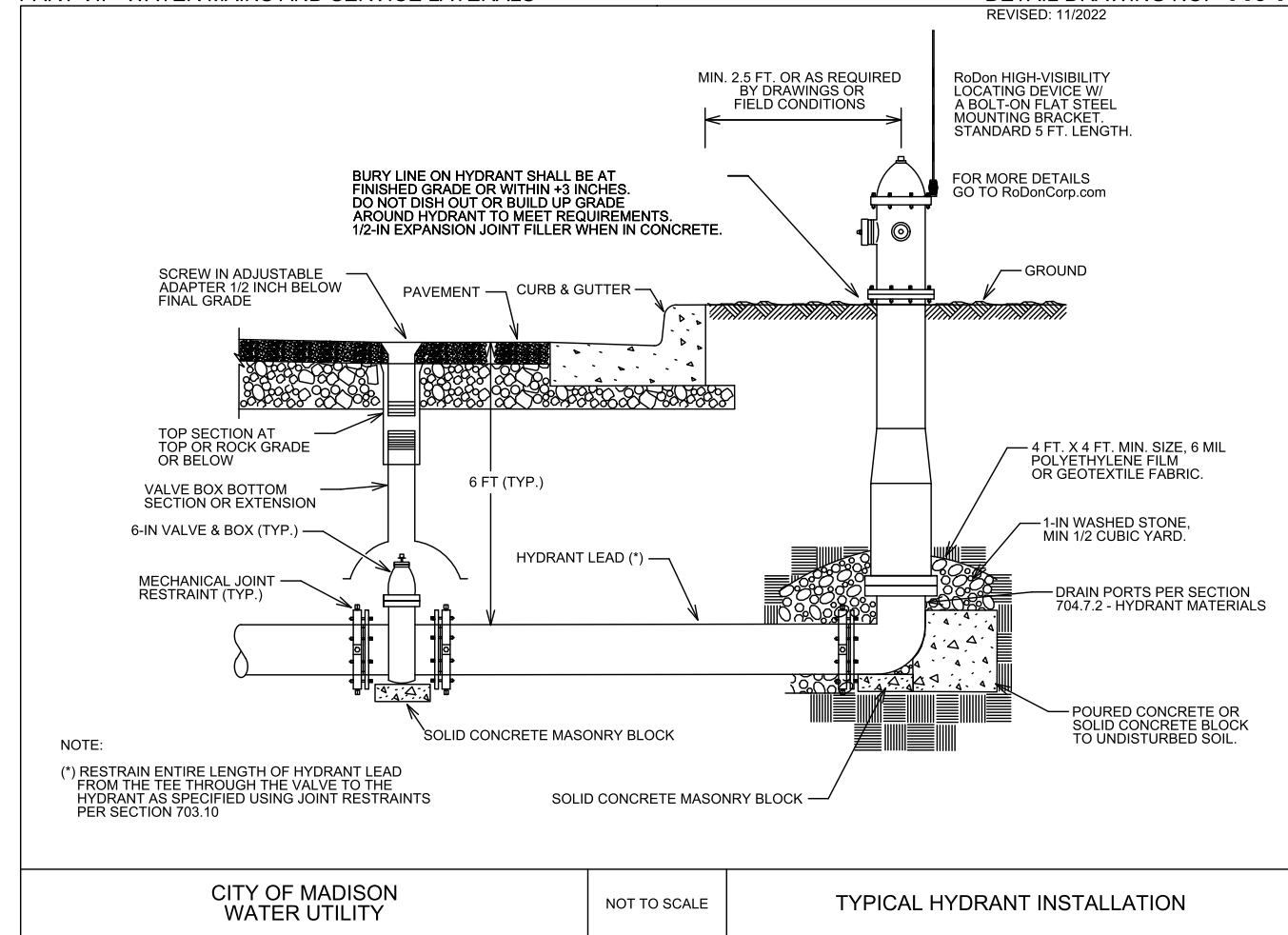
WIS. STATUTE 182.0175 (1974) REQUIRES MIN. OF 3 WORK DAYS NOTICE BEFORE YOU EXCAVATE.



DISCLAIMER NOTE: UTILITY LOCATIONS SHOWN ARE APPROXIMATE ONLY. IT SHALL BE THE CONTRACTOR'S RESPONSIBILITY TO DETERMINE THE EXACT HORIZONTAL AND VERTICAL LOCATION OF ALL EXISTING UNDERGROUND AND OVERHEAD UTILITIES PRIOR TO COMMENCING WORK.

PART VII - WATER MAINS AND SERVICE LATERALS

DETAIL DRAWING NO. 7.04
REVISED: 11/2022



WESTERN ADDITION TO THOUSAND OAKS PHASE 4

WATER ESTIMATE OF MATERIALS

CITY OF MADISON, WISCONSIN

SCALE: N/A

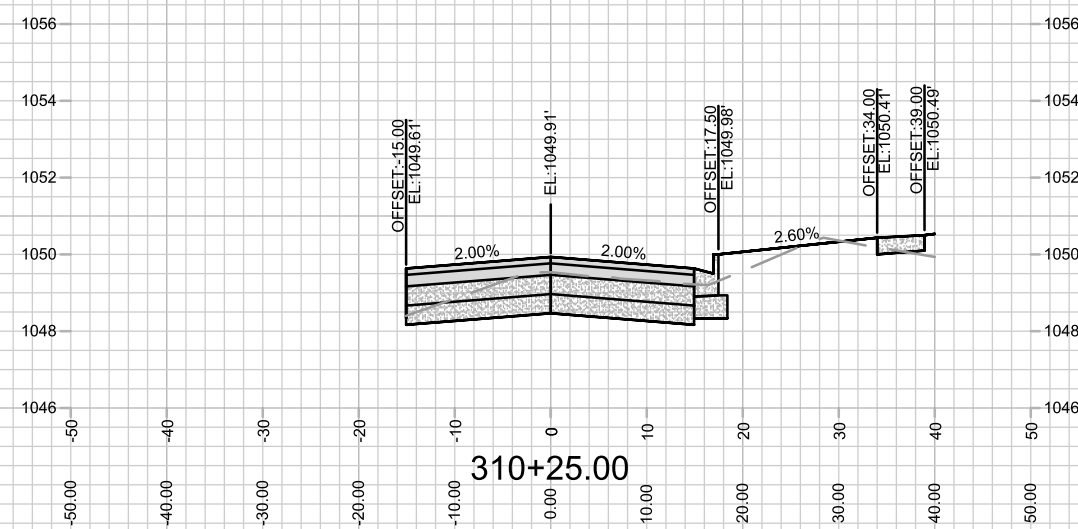
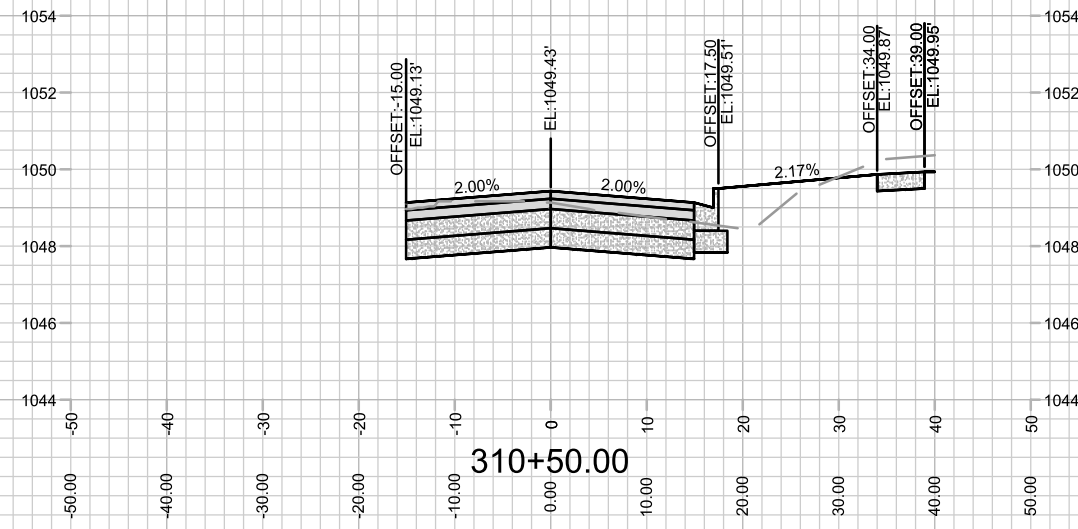
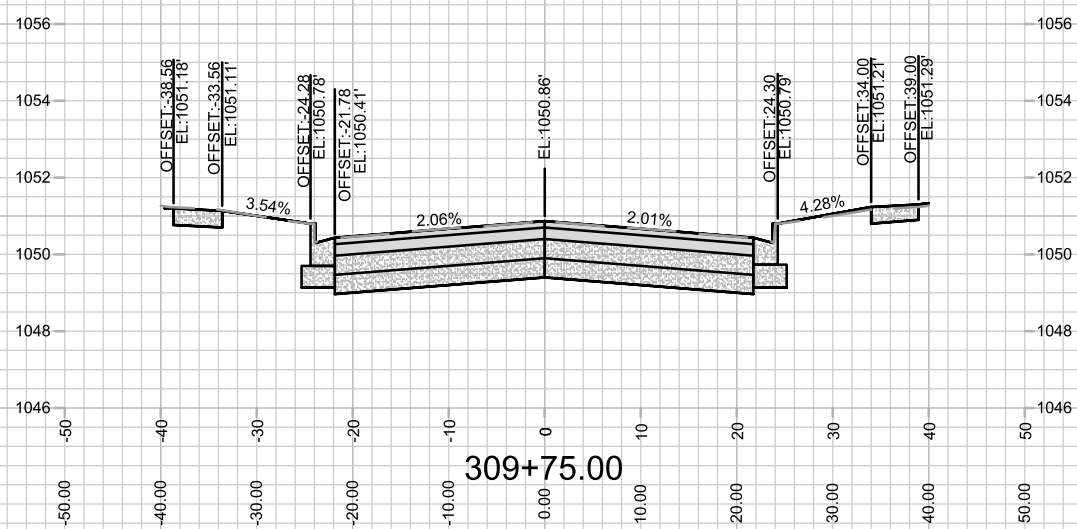
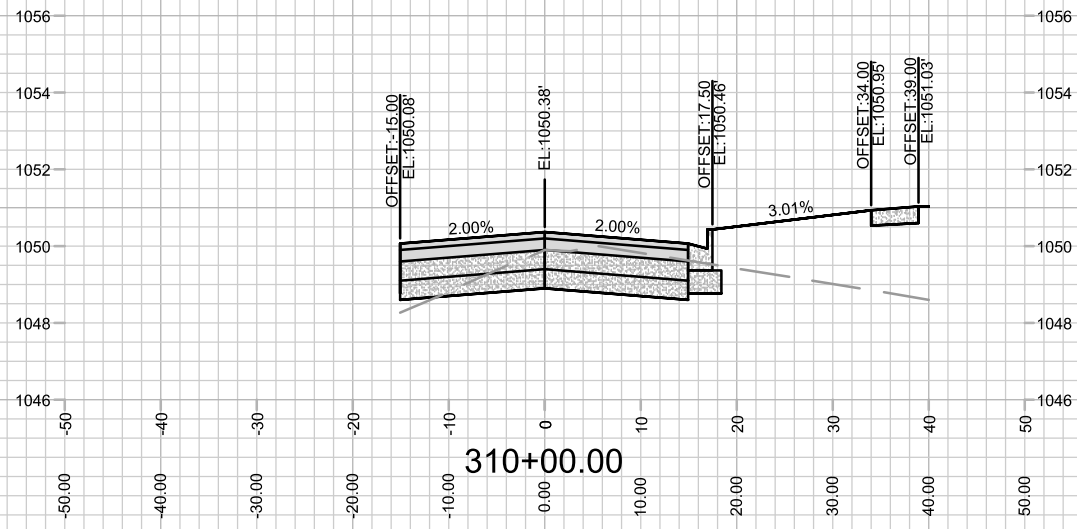
DESIGNED BY: RJN
MADISON WATER UTILITY
119 E OLIN AVE, MADISON, WI 53713
PRINTING DATE: 9/25/23

CONTRACT NO: 9221



14345

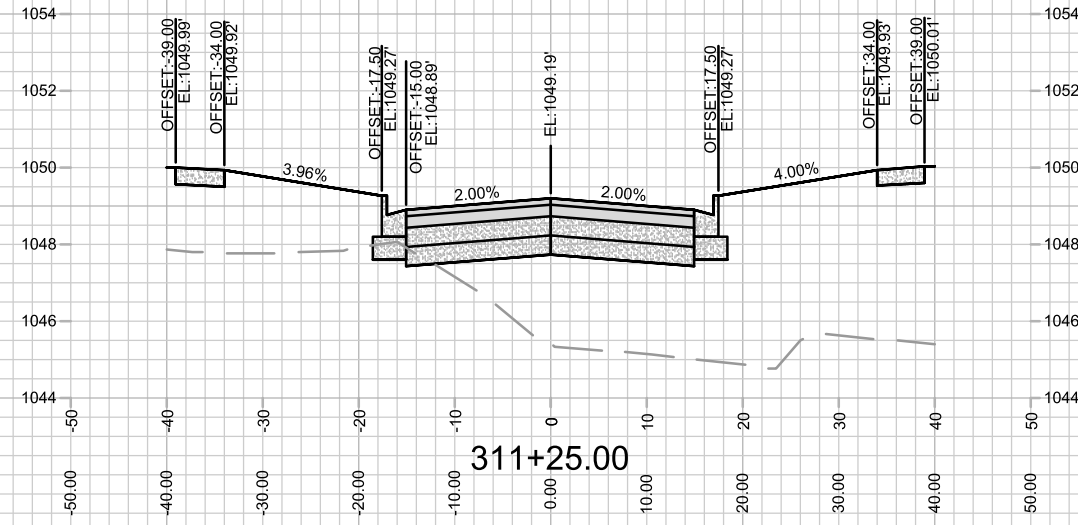
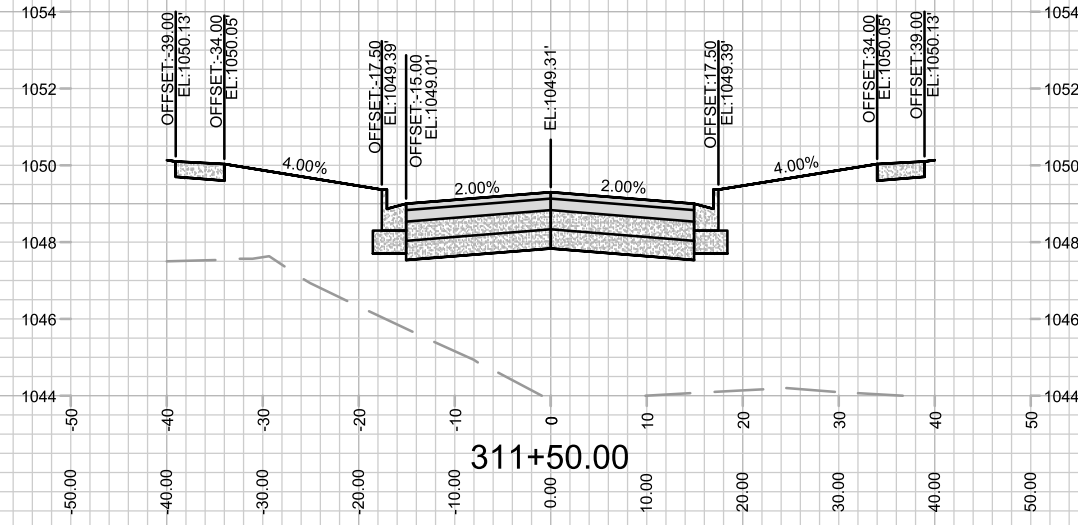
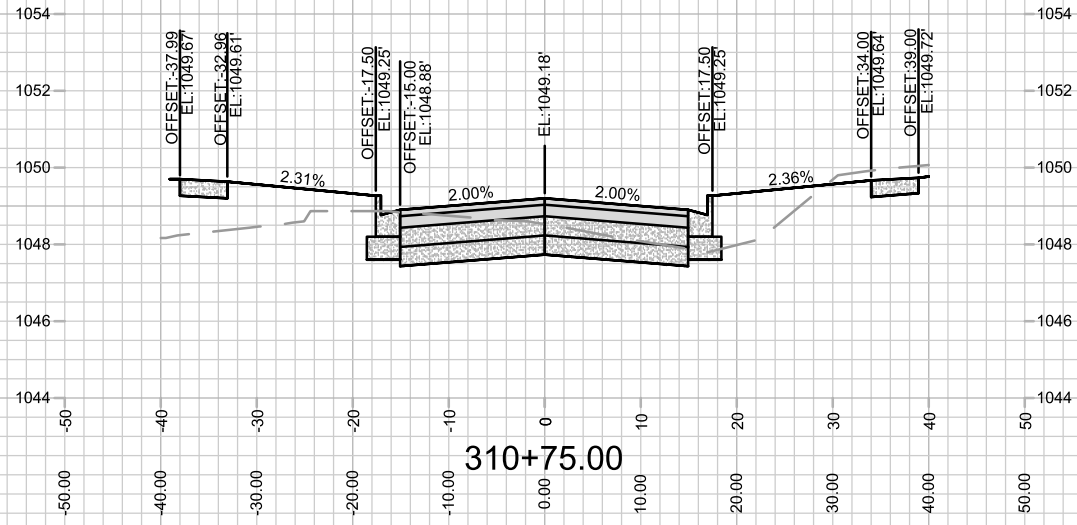
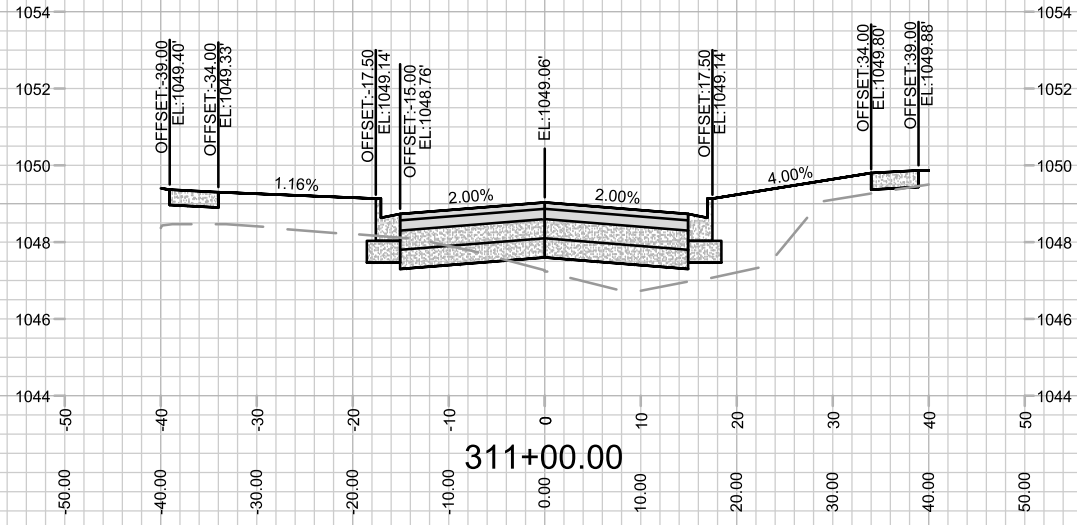
W-4



MARK	REVISION	DATE	BY
###	###	###	###
###	###	###	###
###	###	###	###
###	###	###	###

Designed By: EEA Date: 09/01/2023 4:00 PM Scale: 1" = 20'
 14345 X-1

14345
 MADISON, WI
 CONTRACT NO: 9221
 CROSS SECTIONS - SUGAR MAPLE LANE
 WESTERN ADDITION TO 1000 OAKS - PHASE 4
 M:\DESIGN\Projects\14345\CAD\Streets\14345EN-Corridor.dwg



MARK	REVISION	DATE	BY
###	###	###	###
###	###	###	###
###	###	###	###
###	###	###	###
###	###	###	###
###	###	###	###
###	###	###	###

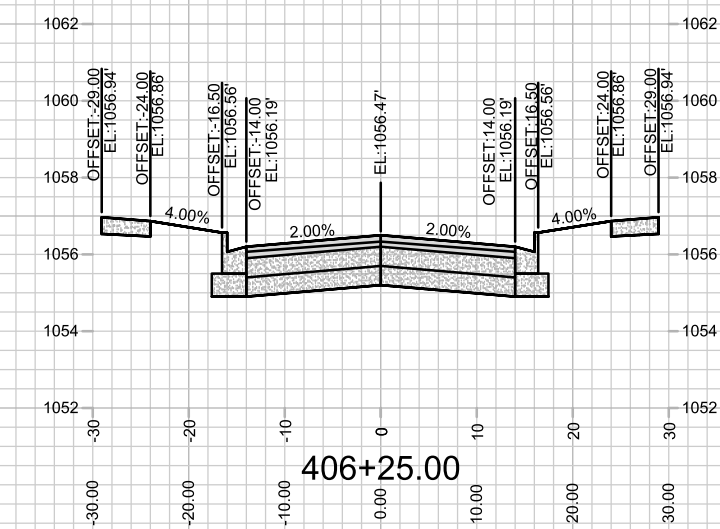
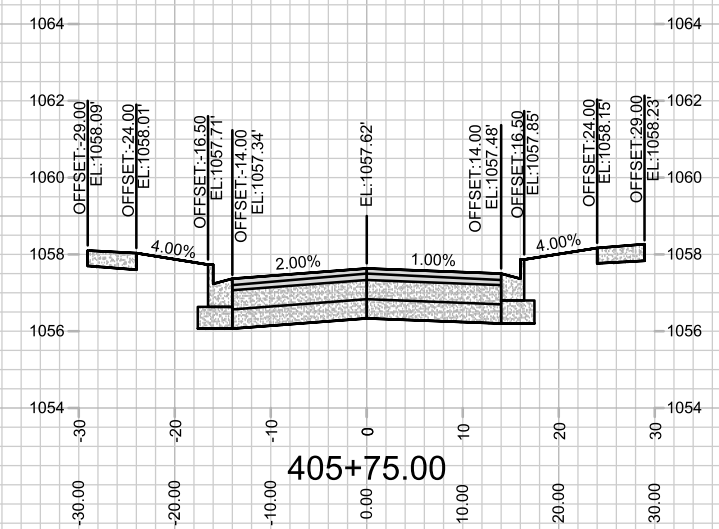
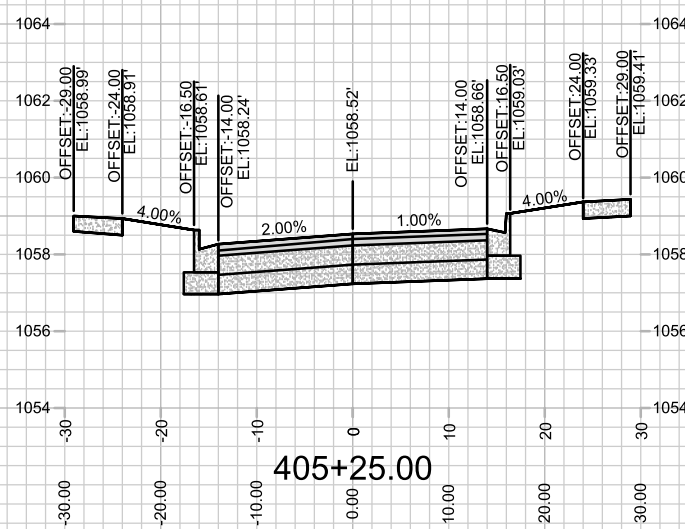
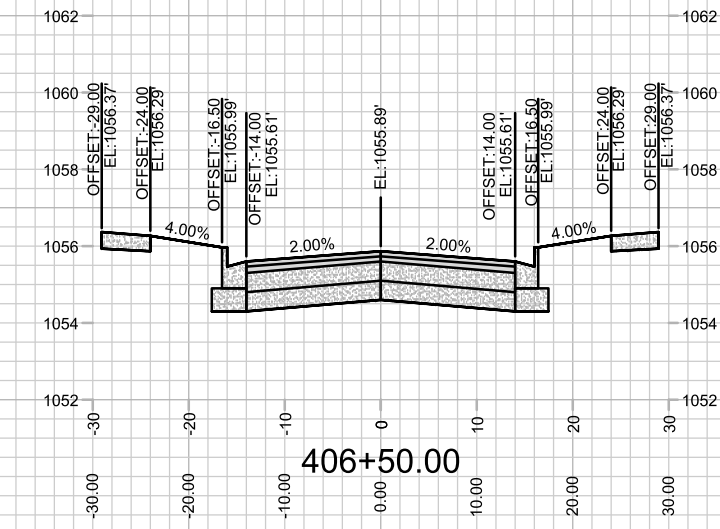
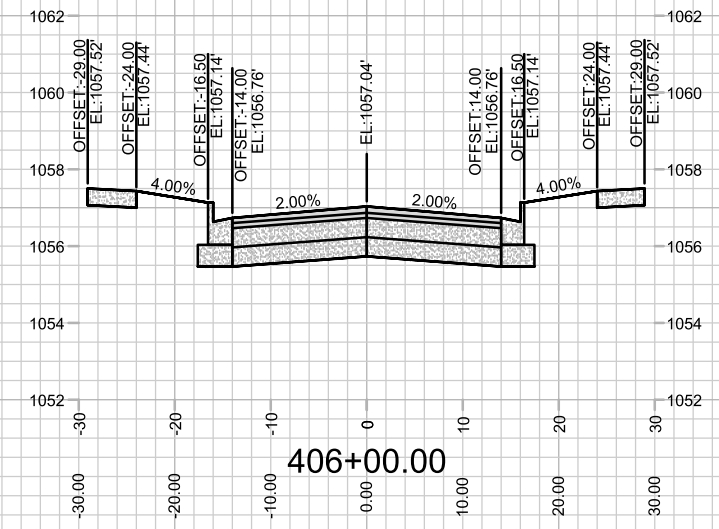
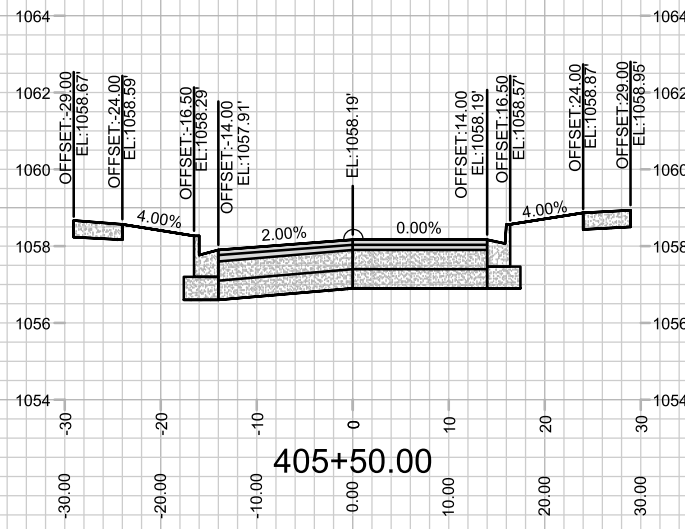
Design: By: EEA Date: 09/01/2023 4:00 PM Scale: 1" = 20'

14345

14345
MADISON, WI
9221
CONTRACT NO:

CROSS SECTIONS - SUGAR MAPLE LANE
WESTERN ADDITION TO 1000 OAKS - PHASE 4
M:\DESIGN\Projects\14345\CAD\Streets\14345EN-Corridor.dwg



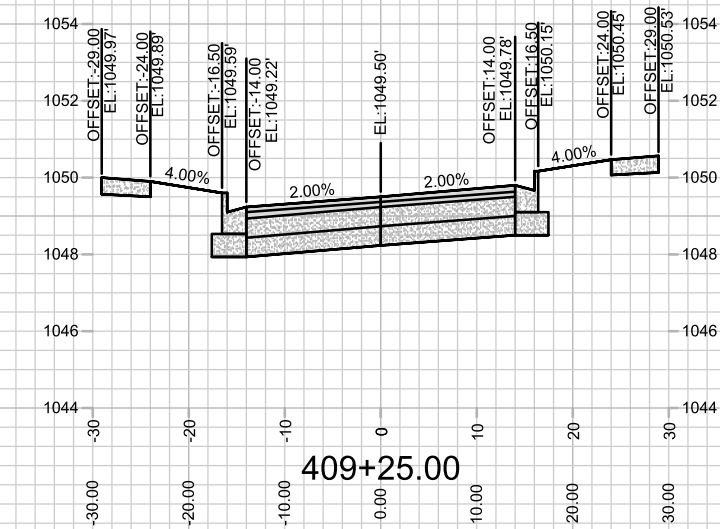
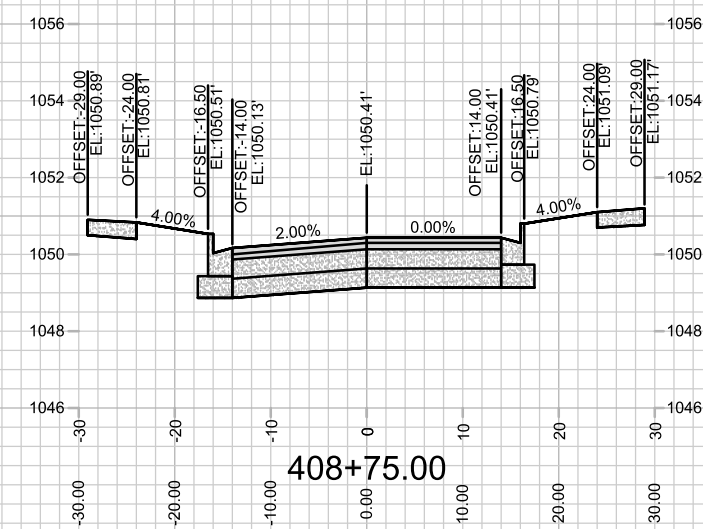
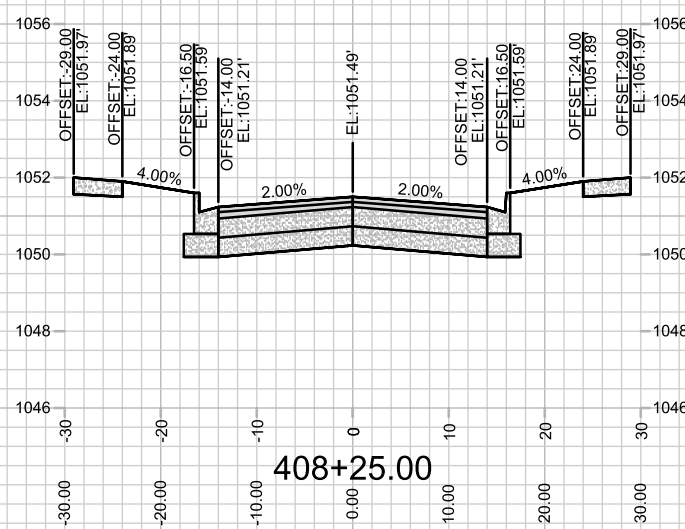
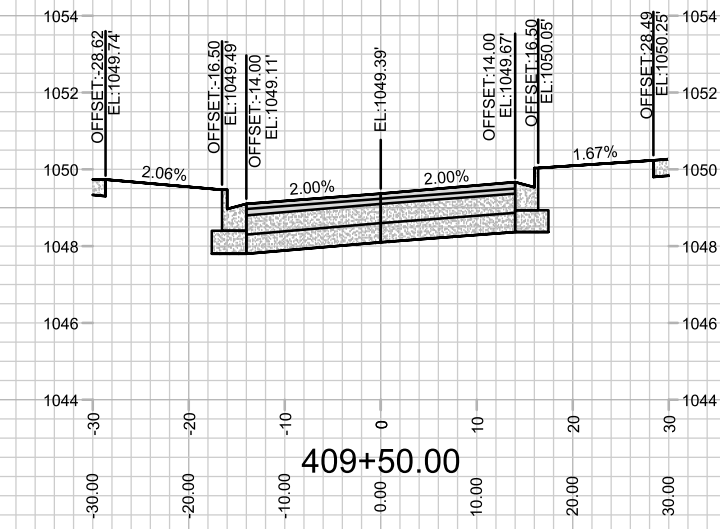
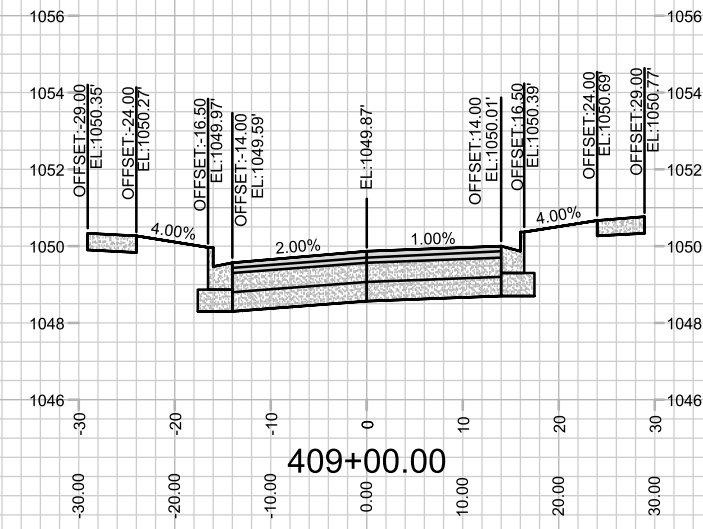
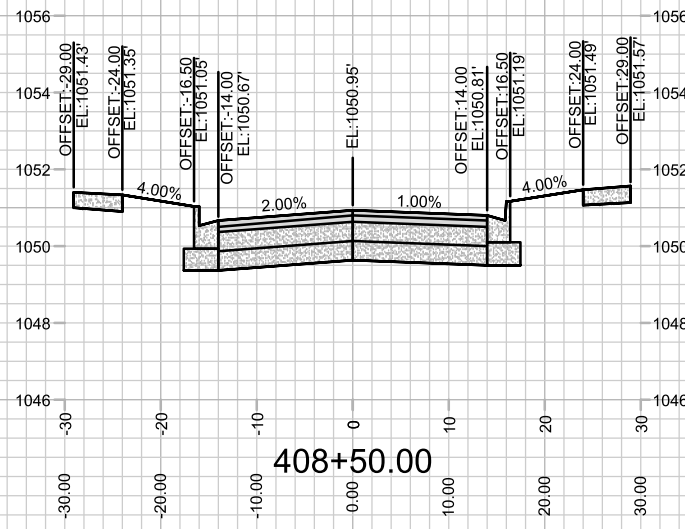


MARK	REVISION	DATE	BY
###	###	###	###
###	###	###	###
###	###	###	###
###	###	###	###

Design: EEA Date: 12/21/2022 3:56 PM Scale: ##### X-3

14345
MADISON, WI
9221
CONTRACT NO:

CROSS SECTIONS - BLUE CRANE RUN
WESTERN ADDITION TO 1000 OAKS - PHASE 4
M:\DESIGN\Projects\14345\CAD\Streets\14345EN-Corridor.dwg



MARK	REVISION	DATE	BY
###	###	###	###
###	###	###	###
###	###	###	###
###	###	###	###

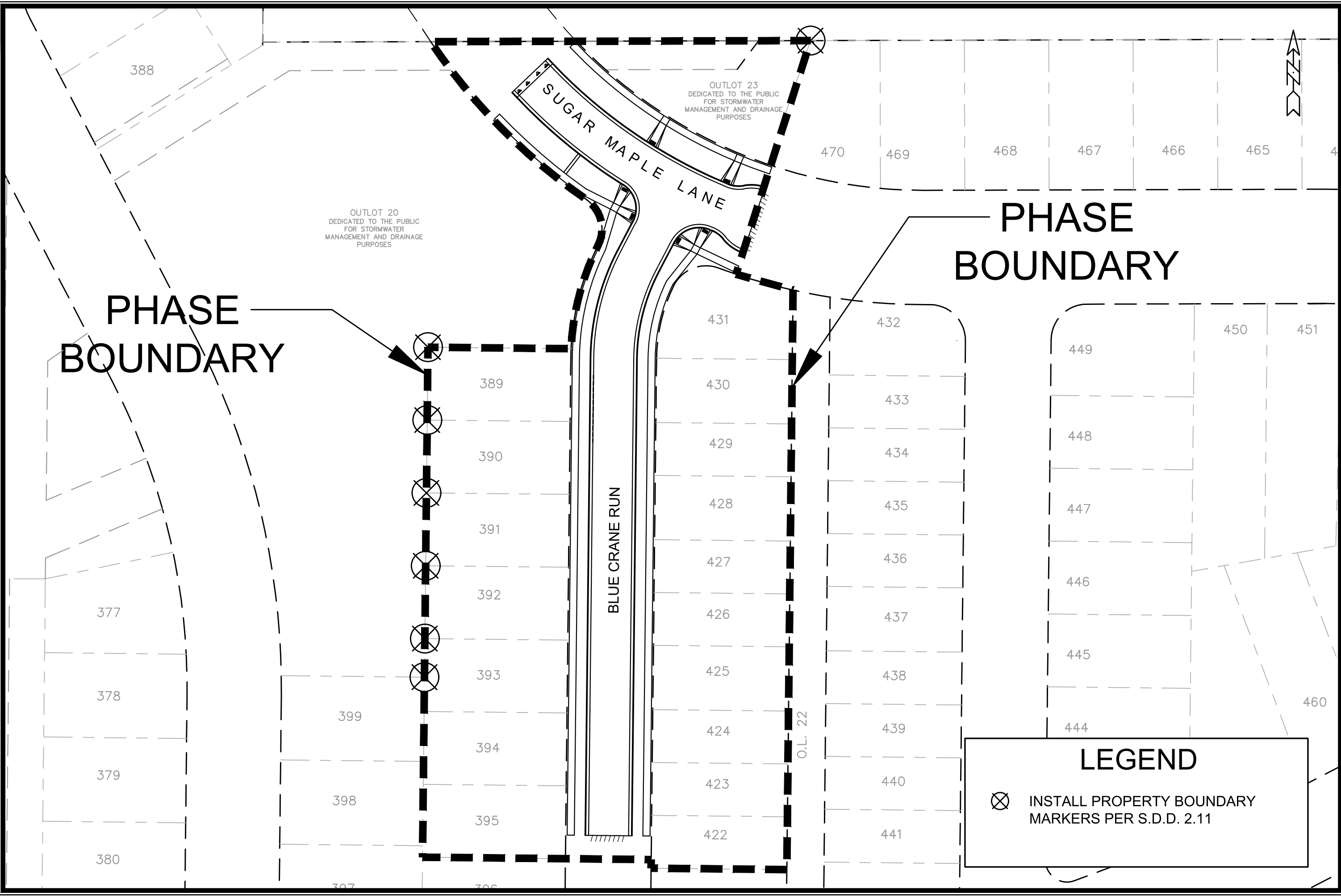
Design: By: EEA Date: 12/22/2022 3:56 PM Scale: #####

14345

14345
 MADISON, WI
 9221
 CONTRACT NO:

CROSS SECTIONS - BLUE CRANE RUN
 WESTERN ADDITION TO 1000 OAKS - PHASE 4
 M:\DESIGN\Projects\14345\CAD\Streets\14345EN-Corridor.dwg

14345
 X-5



**PHASE
BOUNDARY**

**PHASE
BOUNDARY**

LEGEND

⊗ INSTALL PROPERTY BOUNDARY MARKERS PER S.D.D. 2.11

OUTLOT 20
DEDICATED TO THE PUBLIC
FOR STORMWATER
MANAGEMENT AND DRAINAGE
PURPOSES

OUTLOT 23
DEDICATED TO THE PUBLIC
FOR STORMWATER
MANAGEMENT AND DRAINAGE
PURPOSES

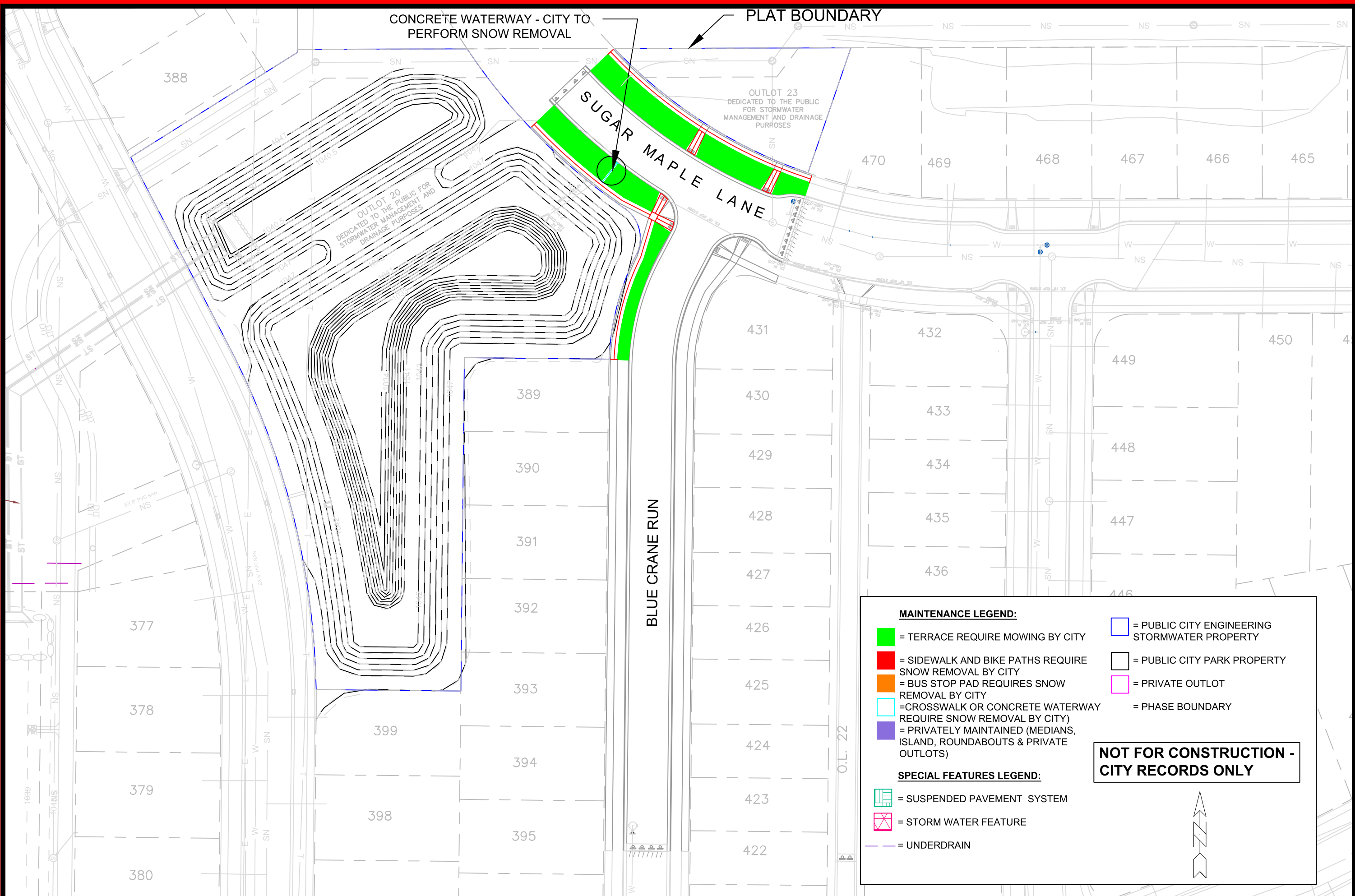
MARK	REVISION	DATE	BY
###	###	###	###
###	###	###	###
###	###	###	###

14345
MADISON, WI
CONTRACT NO: 9221

PROP. BOUNDARY MARKERS PLAN
WESTERN ADDITION TO 1000 OAKS - PHASE 4
M:\DESIGN\Projects\14345\CAD\Streets\14345EN-BoundaryMarkers.dwg



14345
PBM-1



CONCRETE WATERWAY - CITY TO PERFORM SNOW REMOVAL

PLAT BOUNDARY

SUGAR MAPLE LANE


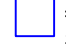

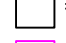

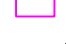



OUTLOT 23
DEDICATED TO THE PUBLIC
FOR STORMWATER
MANAGEMENT AND DRAINAGE
PURPOSES

OUTLOT 20
DEDICATED TO THE PUBLIC FOR
STORMWATER MANAGEMENT AND
DRAINAGE PURPOSES




BLUE CRANE RUN

O.L. 22

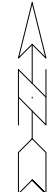
MAINTENANCE LEGEND:

	= TERRACE REQUIRE MOWING BY CITY		= PUBLIC CITY ENGINEERING STORMWATER PROPERTY
	= SIDEWALK AND BIKE PATHS REQUIRE SNOW REMOVAL BY CITY		= PUBLIC CITY PARK PROPERTY
	= BUS STOP PAD REQUIRES SNOW REMOVAL BY CITY		= PRIVATE OUTLOT
	= CROSSWALK OR CONCRETE WATERWAY REQUIRE SNOW REMOVAL BY CITY		= PHASE BOUNDARY
	= PRIVATELY MAINTAINED (MEDIANS, ISLAND, ROUNDABOUTS & PRIVATE OUTLOTS)		

SPECIAL FEATURES LEGEND:

	= SUSPENDED PAVEMENT SYSTEM
	= STORM WATER FEATURE
	= UNDERDRAIN

NOT FOR CONSTRUCTION - CITY RECORDS ONLY



MARK	REVISION	DATE	BY
###	###	###	###
###	###	###	###
###	###	###	###

Designed By: EEA Date: 9/22/2023 10:32 AM Scale: 1" = 60'
 14345
 MN-1

MN-1
 MADISON, WI
 CONTRACT NO.: 9221

MAINTENANCE PLAN
 WESTERN ADDITION TO 1000 OAKS - PHASE 4
 M:\DESIGN\Projects\14345\CAD\Streets\14345EN-Maintenance.dwg



14345
 MN-1