



Madison, Wisconsin

CITY OF MADISON

CITY ENGINEERING DIVISION

DEPARTMENT OF PUBLIC WORKS

PLAN OF PROPOSED IMPROVEMENT

925 APPLGATE ROAD

INDEX OF SHEETS

SHEET NO. 1	TITLE SHEET
SHEET NO. D 1	STANDARD NOTES
SHEET NO. D 2	TYPICAL SECTIONS
SHEET NO. D 3	TERRACE EXCAVATION FOR TREE PLANTING
SHEET NO. L 1	LANDSCAPING PLAN
SHEET NO. P 1	PLAN & PROFILE
SHEET NO. U 1	UTILITY PLAN & PROFILE
SHEET NO. X 1	CROSS SECTIONS
	NO MAINTENANCE PLAN REQUIRED

CITY PROJECT NO. 14990
CONTRACT NO. 9492

PROJECT
LOCATION



PUBLIC IMPROVEMENT PROJECT
APPROVED

APPROVED DATE: JANUARY 23, 2024

BY THE COMMON COUNCIL
OF MADISON, WISCONSIN

PUBLIC IMPROVEMENT DESIGN
APPROVED BY:

Chris Petykowiak Apr 17, 2024

City Engineer Date

STREET
DESIGNED BY:



Apr 17, 2024

STORM & SANITARY SEWER
DESIGNED BY:

LATERAL ONLY

WATER
DESIGNED BY:

LATERAL ONLY

PLOT SCALE: 1 IN = 100 FT

PLOT NAME: ---

REV. DATE: 4/8/2024 3:17 PM

ORIGINATOR: CITY OF MADISON

THE LOCATION AND INFORMATION FOR PROPOSED NEW TREES, IN THE PUBLIC RIGHT OF WAY OR ON PUBLIC LANDS ARE APPROXIMATE AND ARE SHOWN FOR REFERENCE ONLY. THE LOCATIONS, SPECIFICATIONS AND PLANTING METHODS OF ALL PROPOSED NEW OR REPLACEMENT TREES IN THE PUBLIC RIGHT OF WAY OR ON PUBLIC LANDS SHALL BE APPROVED BY THE CITY FORESTER PRIOR TO INSTALLATION.

NO TREES IN THE RIGHT OF WAY OR ON PUBLIC LANDS SHALL BE TRIMMED, PRUNED, REMOVED OR ADVERSELY AFFECTED IN ANY WAY UNTIL THE DEVELOPER HAS RECEIVED WRITTEN PERMISSION FROM THE CITY ENGINEER OR CITY FORESTER. SAID WRITTEN PERMISSION SHALL INCLUDE LANGUAGE INDICATING THAT SECTION 10.101 OF THE MADISON GENERAL ORDINANCES AND ADMINISTRATIVE PROCEDURE MEMORANDUM NO. 6-2, REFERRING TO NOTIFICATION OF PROPERTY OCCUPANTS AND/OR OWNERS, HAS BEEN COMPLIED WITH.

DEVELOPER MUST SUBMIT A TRAFFIC CONTROL PLAN TO CITY TRAFFIC ENGINEERING AT LEAST 14 DAYS PRIOR TO THE START OF WORK. WORK SHALL NOT PROCEED UNTIL AN APPROVED TRAFFIC CONTROL PLAN IS IN PLACE.

CONTACT THE PROJECT ENGINEER AND DESIGNER, NASHALY GUTIERREZ, AT NGUTIERREZ@CITYOFMADISON.COM FOR CAD FILES AND ALIGNMENT DATA PRIOR TO STAKING.

ALL PAVEMENT IN THE APPLGATE ROAD RIGHTS-OF-WAY SHALL BE TYPE C PAVEMENT PER STANDARD DETAIL DRAWING 4.02.

UNDERDRAINS SHALL BE INSTALLED PER STANDARD DETAIL DRAWING 4.05 FOR 75' ON EACH SIDE OF THE LOW POINT, OR TO THE NEAREST CURB HIGH POINT. ALL UNDERDRAIN SHALL BE WRAPPED.

ALL GUTTERS SHALL DRAIN WITH A MINIMUM GRADE OF 0.5% TOWARD STORM SEWER INLETS.

ALL DITCHES SHALL DRAIN WITH A MINIMUM GRADE OF 0.5%

THE CROSS SLOPE OF SIDEWALKS AND BARRIER FREE SIDEWALK CURB RAMPS SHALL TYPICALLY BE 1.5%. THE LONGITUDINAL GRADE OF BARRIER FREE SIDEWALK CURB RAMPS SHALL NOT EXCEED 8.33%. ALL SIDEWALK RAMPS SHALL BE CONSTRUCTED ACCORDING TO S.D.D. 3.04. AT ALL OTHER LOCATIONS THE LONGITUDINAL GRADE OF SIDEWALKS SHALL NOT EXCEED 5.0 % OR THE ADJACENT STREET GRADE WHICHEVER IS GREATER NOR BE LESS THAN 0.5% AND SHALL DRAIN TOWARD STORM SEWER INLETS. SIDE SLOPES WITHIN TEN FEET OF A PUBLIC SIDEWALK SHALL NOT EXCEED 4:1. ALL SIDEWALK AND SIDEWALK RAMP ELEVATIONS AND GRADES SHALL BE FIELD VERIFIED AND SET TO COMPLY WITH THE CITY OF MADISON STANDARD SPECIFICATIONS AND THE A.D.A. GUIDELINES.

CURB STATION AND OFFSETS SHALL BE TO THE EDGE OF PAVEMENT UNLESS OTHERWISE INDICATED. CURB ELEVATIONS SHALL BE TO THE EDGE OF PAVEMENT UNLESS OTHERWISE INDICATED.

POWER POLES AND OTHER OBSTRUCTIONS SHALL BE MOVED TO PROVIDE 2 FEET MINIMUM OF CLEAR DISTANCE FROM ANY FACE OF CURB OR EDGE OF SIDEWALK UNLESS OTHERWISE INDICATED ON THE PLANS.

ANY INFORMATION SHOWN ON THIS PLAN, WHICH IS NOT PART OF THIS RIGHT-OF-WAY PROJECT, IS PRELIMINARY AND NOT FOR CONSTRUCTION.

THERE MAY BE EXISTING UTILITIES OR OTHER FEATURES WHICH ARE EITHER NOT SHOWN OR SHOWN INCORRECTLY ON THIS PLAN. IT IS THE RESPONSIBILITY OF THE DEVELOPER TO LOCATE AND IDENTIFY ALL UTILITIES AND TOPOGRAPHY WHICH MAY AFFECT THE CONSTRUCTION OF THESE IMPROVEMENTS.

ALL PERMANENT SIGNING AND POSTING WILL BE DETERMINED AND PROVIDED BY THE TRAFFIC ENGINEERING DIVISION, FOLLOWING CONSTRUCTION OF THESE IMPROVEMENTS.

THE DEVELOPER SHALL PROVIDE, INSTALL AND MAINTAIN ALL STREET END BARRICADES, SIGNING AND TRAFFIC CONTROL, AS REQUIRED BY THE CITY TRAFFIC ENGINEER.

PAVEMENT SAWCUTS SHALL BE AS DIRECTED BY THE CITY CONSTRUCTION ENGINEER. SAWCUTS SHOWN ON THE PLAN ARE APPROXIMATE.

CURB ON CUL DE SACS SHALL BE INSTALLED ACCORDING TO S.D.D 3.05.

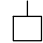


ALL WORK IN THE RIGHT OF WAY AND PUBLIC EASEMENTS SHALL BE IN ACCORDANCE WITH THE CITY OF MADISON STANDARD SPECIFICATIONS FOR PUBLIC WORKS CONSTRUCTION LATEST EDITION.


ALL PROPOSED IMPROVEMENTS IN THE RIGHT-OF-WAY ARE BASED ON SURVEY DATA PROVIDED BY THE DEVELOPER OR ITS CONSULTANT. IN THE CASE THAT THE PROPOSED IMPROVEMENTS CAN NOT BE INSTALLED PER THESE PLANS OR THE CITY OF MADISON STANDARD SPECIFICATION FOR PUBLIC WORKS CONSTRUCTION, LATEST EDITION, THE DEVELOPER SHALL BE RESPONSIBLE FOR THE COST OF EXTRA WORK DUE TO INACCURACIES OF THE SURVEY.

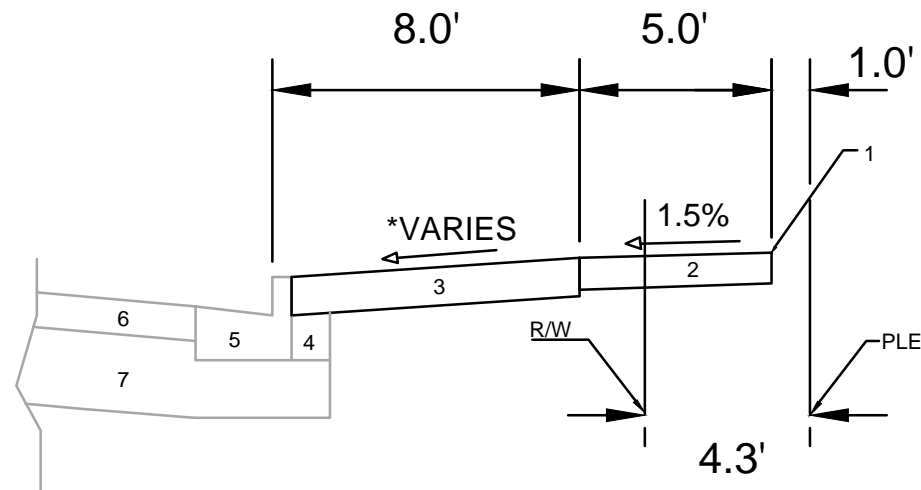
ALL UTILITY VERIFICATIONS AND ACCURACY OF THE DRAWINGS ARE THE RESPONSIBILITY OF THE DEVELOPER. ANY CONFLICTS THAT ARISE FROM MISSING OR ERRONEOUS INFORMATION WILL BE AT THE EXPENSE OF THE DEVELOPER. NO PRECAST STRUCTURES WILL BE APPROVED FOR STORM OR SANITARY SEWER UNTIL ALL POTENTIAL UTILITY CONFLICTS ARE RESOLVED.

CONVENTIONAL SIGNS

FIELD VERIFY ALL UTILITY LOCATIONS

GAS	—— G ——
STORM SEWER	—— ST ——
SANITARY SEWER	—— SAN ——
WATER	—— W ——
BURIED ELECTRIC	—— E ——
OVERHEAD ELECTRIC	—— OH ——
POWER POLE	
ADA COMPLIANT RAMP W/ DETECTABLE WARNING FIELD	
COMBUSTIBLE FLUIDS	

STANDARD NOTES	14990	MADISON, WI	9492	D-1
925 APPLGATE ROAD				
M:\DESIGN\Projects\14990\CAD\Streets\14990EN-Details.dwg				
				
14990				
D-1				



**TYPICAL SECTION
APPLEGATE RD**

SPECIAL NOTES:

*SEE X-SHEETS FOR CROSS SLOPES

- 1 POINT REFERRED TO ON PROFILE FOR B.W.
- 2 5" CONCRETE SIDEWALK , 7" AT DRIVEWAYS
- 3 6" TOPSOIL, SEED & MAT
- 4 EX. FILL TO REMAIN, INSTALL AT CURB REPLACEMENT LOCATIONS
- 5 EX. TYPE "A" CONCRETE CURB & GUTTER, REPLACE AT LOCATIONS IDENTIFIED ON P-SHEETS OR AS DIRECTED BY THE CONSTRUCTION ENGINEER
- 6 EX. PAVEMENT TO REMAIN
- 7 EX. ROAD BASE TO REMAIN

MARK	REVISION	DATE	BY

14990
MADISON, WI
9492
CONTRACT NO:

TYPICAL SECTION
925 APPLGATE ROAD
M:\DESIGN\Projects\14990\CAD\Streets\14990EN-Details.dwg



14990
D-2

TERRACE EXCAVATION FOR TREE PLANTING:

THIS INCLUDES ALL WORK NECESSARY TO EXCAVATE AREAS WITHIN GRASS TERRACES TO AN APPROPRIATE DEPTH SUITABLE FOR NEW TREE PLANTINGS. ALL WORK SHALL BE IN ACCORDANCE WITH ARTICLE 201 OF THE STANDARD SPECIFICATIONS. THE CONTRACTOR SHALL COORDINATE WITH THE ENGINEER AND FORESTRY REPRESENTATIVE TO SELECT THE APPROPRIATE LOCATIONS FOR TREE PLANTINGS TO BE COMPLETED. ONCE THE LOCATIONS MARKED, THE CONTRACTOR SHALL EXCAVATE THE TERRACE AREA TO A SUITABLE DEPTH FOR NEW TREE PLANTINGS, APPROXIMATELY TWENTY (20) INCHES TO TWENTY-FOUR (24) INCHES. THE TERRACE SHALL BE EXCAVATED TO A MINIMUM LENGTH OF TWENTY (20) FEET, BUT THAT MAY BE REDUCED BY THE CONSTRUCTION ENGINEER TO FIT SITE CONSTRAINTS AS NECESSARY. THE WIDTH OF THE TERRACE SHALL ALSO BE EXCAVATED TO AS CLOSE TO THE SIDEWALK/PATH AND CURB AS IS REASONABLE. WHILE PERFORMING THE EXCAVATION, THE CONTRACTOR SHALL TAKE CARE TO NOT UNDERMINE OR DAMAGE THE ADJACENT CURB OR SIDEWALK. IF DAMAGED DURING THE EXCAVATION PROCESS, THE DEVELOPER SHALL REPLACE CURB OR SIDEWALK/PATH AT THEIR COST. ONCE THE AREA IS EXCAVATED, THE CONTRACTOR SHALL BACKFILL THE EXCAVATED AREA WITH REGULAR TOPSOIL, AND THE SURFACE SHALL BE RESTORED WITH SEED AND EROSION MAT.

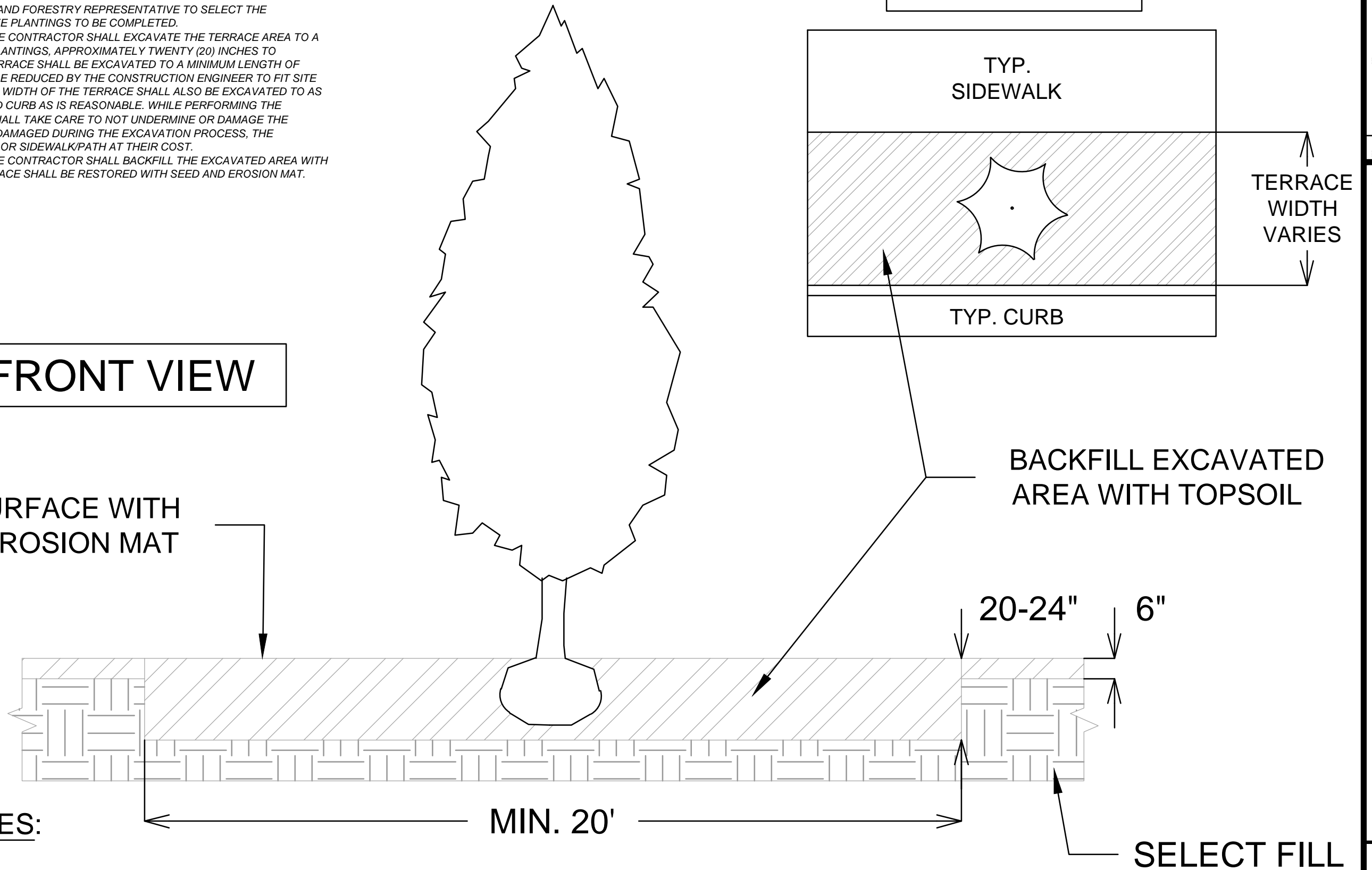
FRONT VIEW

TOP VIEW

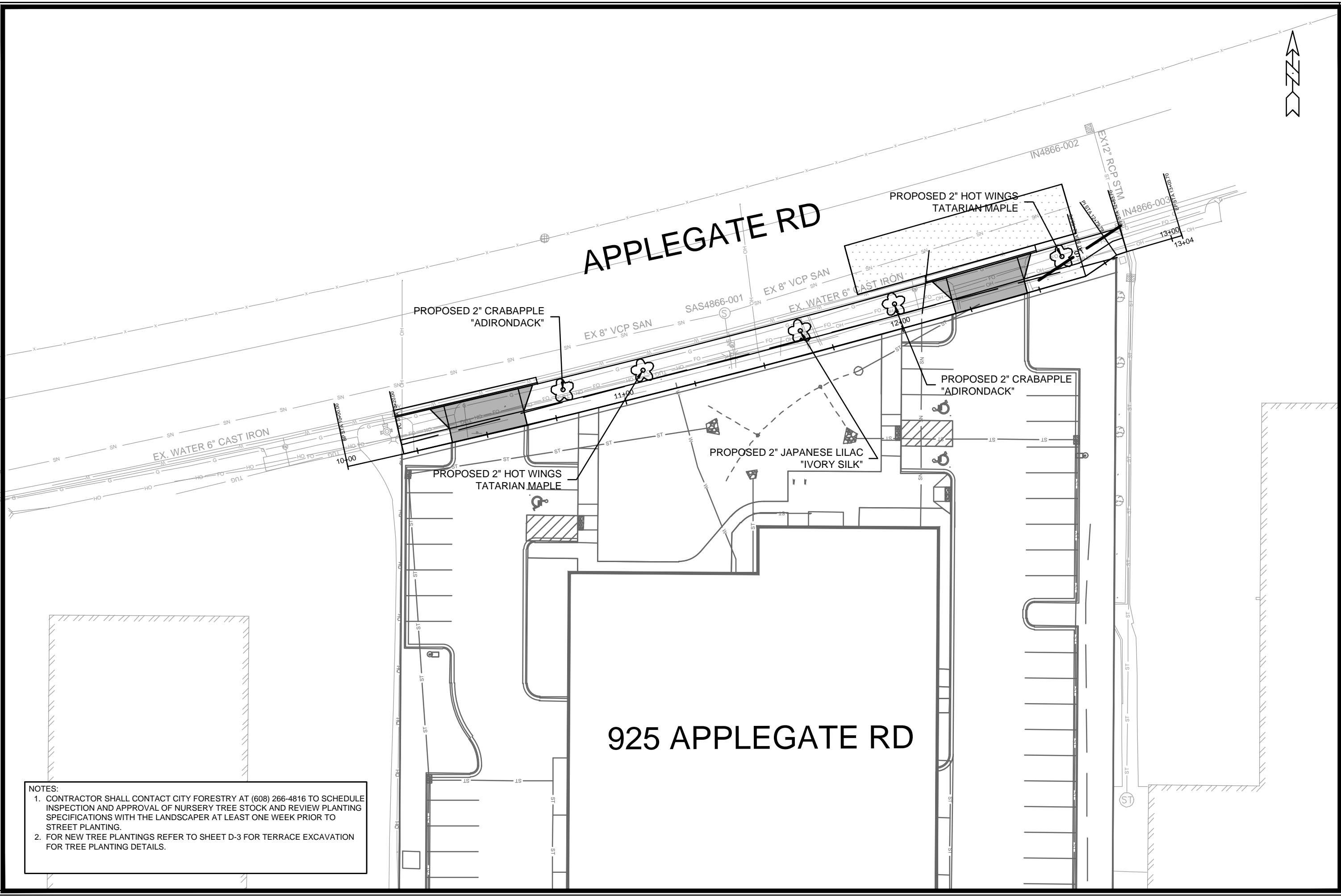
RESTORE SURFACE WITH SEED AND EROSION MAT

SPECIAL NOTES:

REFER TO S.D.D. 2.01 FOR STANDARD PLANTING TECHNIQUE FOR TREES IN TURF AREAS.



14990	14990	MARK	REVISION	DATE	BY
TEERACE EXCAVATION TREE PLANTING	MADISON, WI	14990	9492	4/22/2024	4:23 PM
925 APPLGATE ROAD					
M:\DESIGN\Projects\14990\CAD\Streets\14990EN-Details.dwg			CONTRACT NO:		D-3
			14990		
			D-3		



NOTES:
 1. CONTRACTOR SHALL CONTACT CITY FORESTRY AT (608) 266-4816 TO SCHEDULE INSPECTION AND APPROVAL OF NURSERY TREE STOCK AND REVIEW PLANTING SPECIFICATIONS WITH THE LANDSCAPER AT LEAST ONE WEEK PRIOR TO STREET PLANTING.
 2. FOR NEW TREE PLANTINGS REFER TO SHEET D-3 FOR TERRACE EXCAVATION FOR TREE PLANTING DETAILS.

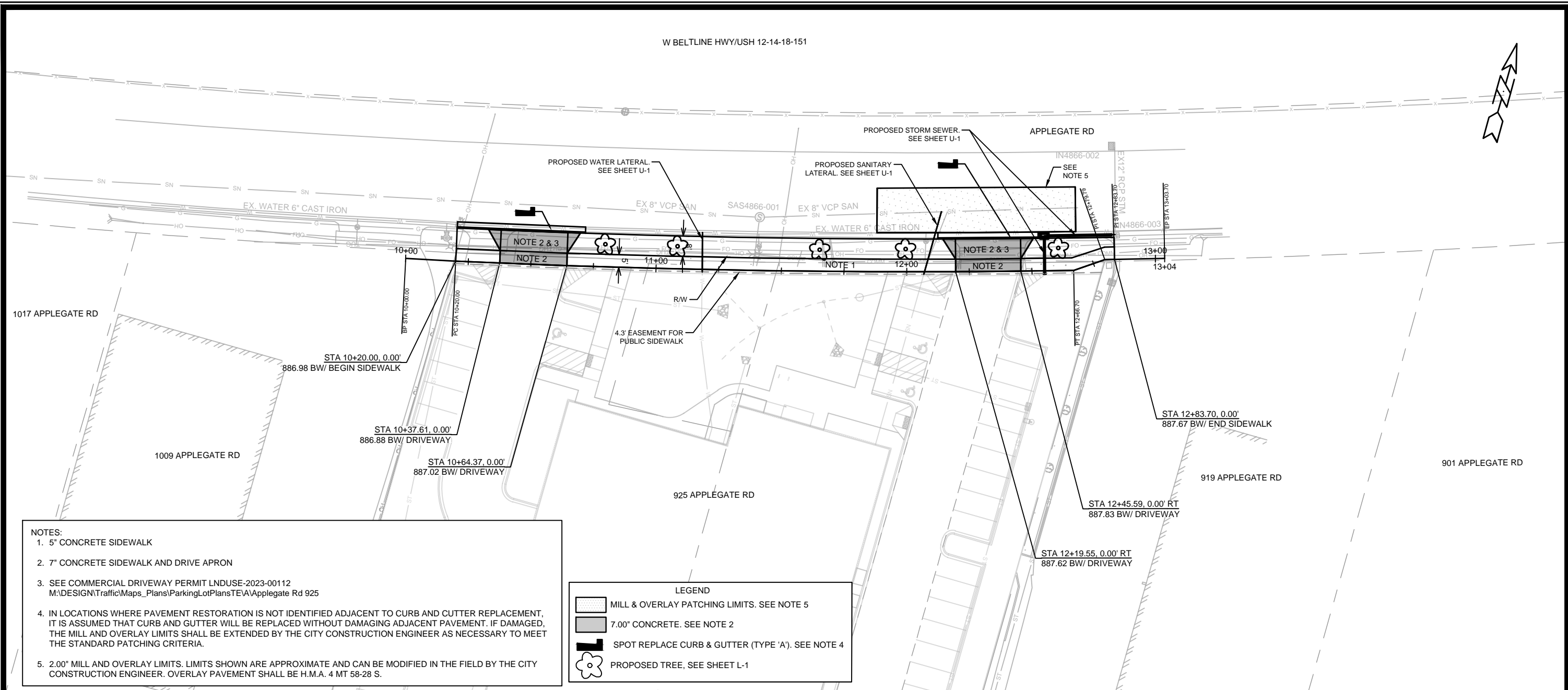
MARK	REVISION	DATE	BY

14990
 MADISON, WI
 CONTRACT NO: 9492

LANDSCAPING PLAN
 925 APPLGATE ROAD
 M:\DESIGN\Projects\14990\CAD\Streets\14990EN-Landscaping.dwg



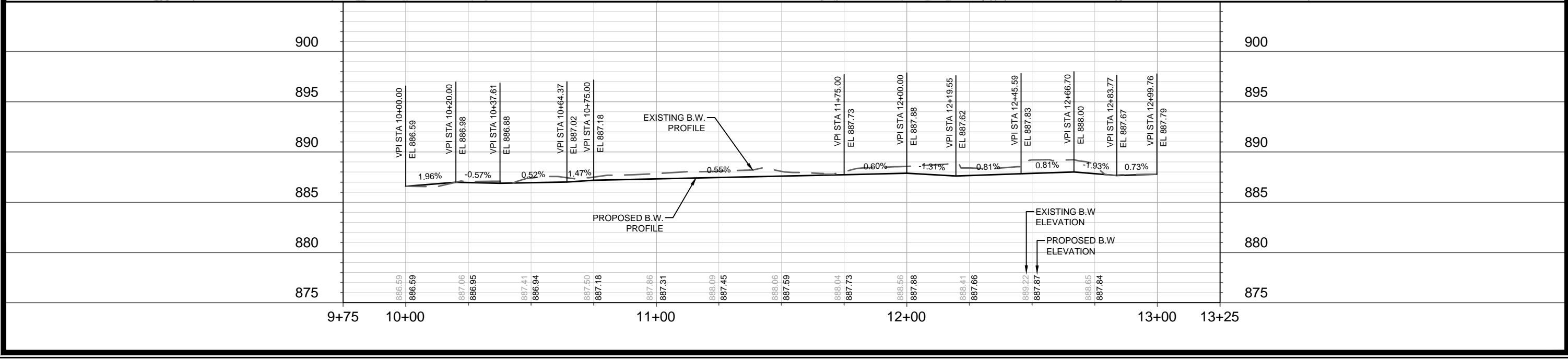
14990
 L-1



- NOTES:**
- 5" CONCRETE SIDEWALK
 - 7" CONCRETE SIDEWALK AND DRIVE APRON
 - SEE COMMERCIAL DRIVEWAY PERMIT LNDUSE-2023-00112
M:\DESIGN\Traffic\Maps_Plans\ParkingLotPlans\TEVA\AppleGate Rd 925
 - IN LOCATIONS WHERE PAVEMENT RESTORATION IS NOT IDENTIFIED ADJACENT TO CURB AND CUTTER REPLACEMENT, IT IS ASSUMED THAT CURB AND GUTTER WILL BE REPLACED WITHOUT DAMAGING ADJACENT PAVEMENT. IF DAMAGED, THE MILL AND OVERLAY LIMITS SHALL BE EXTENDED BY THE CITY CONSTRUCTION ENGINEER AS NECESSARY TO MEET THE STANDARD PATCHING CRITERIA.
 - 2.00" MILL AND OVERLAY LIMITS. LIMITS SHOWN ARE APPROXIMATE AND CAN BE MODIFIED IN THE FIELD BY THE CITY CONSTRUCTION ENGINEER. OVERLAY PAVEMENT SHALL BE H.M.A. 4 MT 58-28 S.

LEGEND

- MILL & OVERLAY PATCHING LIMITS. SEE NOTE 5
- 7.00" CONCRETE. SEE NOTE 2
- SPOT REPLACE CURB & GUTTER (TYPE 'A'). SEE NOTE 4
- PROPOSED TREE, SEE SHEET L-1



14990	14990	14990	14990	14990	14990	14990	14990	14990	14990
MADISON, WI	MADISON, WI	MADISON, WI	MADISON, WI	MADISON, WI	MADISON, WI	MADISON, WI	MADISON, WI	MADISON, WI	MADISON, WI
CONTRACT NO: 9492	CONTRACT NO: 9492	CONTRACT NO: 9492	CONTRACT NO: 9492	CONTRACT NO: 9492	CONTRACT NO: 9492	CONTRACT NO: 9492	CONTRACT NO: 9492	CONTRACT NO: 9492	CONTRACT NO: 9492
14990	14990	14990	14990	14990	14990	14990	14990	14990	14990
P-1	P-1	P-1	P-1	P-1	P-1	P-1	P-1	P-1	P-1

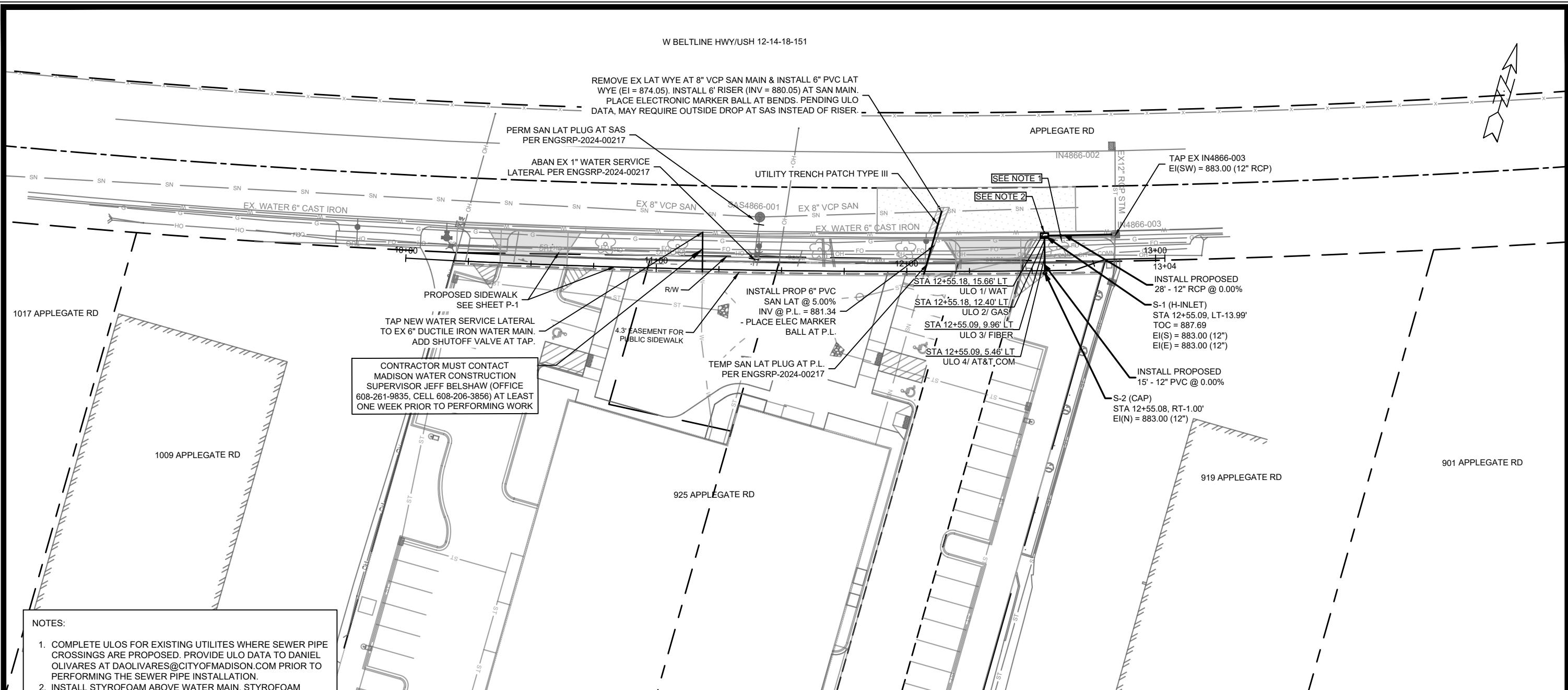
PLAN & PROFILE - APPLEGATE ROAD

925 APPLEGATE ROAD

M:\DESIGN\Projects\14990\CAD\Streets\14990EN-PnP.dwg

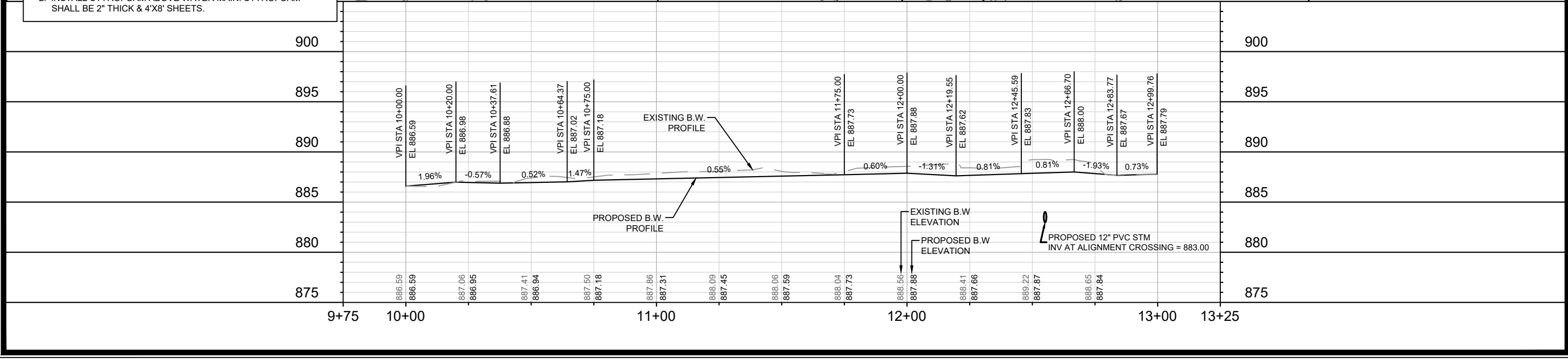
14990

P-1



CONTRACTOR MUST CONTACT MADISON WATER CONSTRUCTION SUPERVISOR JEFF BELSHAW (OFFICE 608-261-9835, CELL 608-206-3856) AT LEAST ONE WEEK PRIOR TO PERFORMING WORK

- NOTES:
- COMPLETE ULOS FOR EXISTING UTILITES WHERE SEWER PIPE CROSSINGS ARE PROPOSED. PROVIDE ULO DATA TO DANIEL OLIVARES AT DAOLIVARES@CITYOFMADISON.COM PRIOR TO PERFORMING THE SEWER PIPE INSTALLATION.
 - INSTALL STYROFOAM ABOVE WATER MAIN. STYROFOAM SHALL BE 2" THICK & 4'X8' SHEETS.

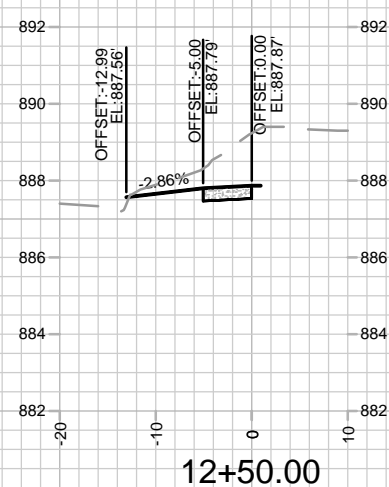
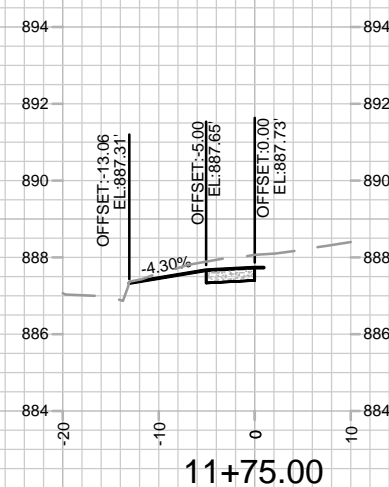
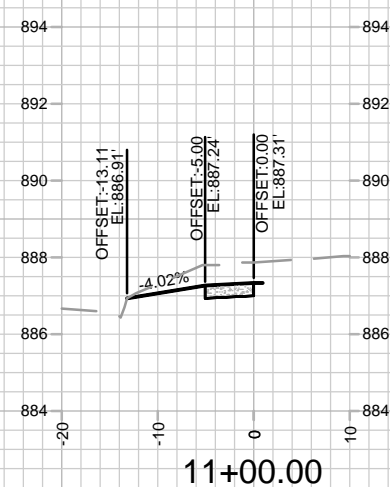
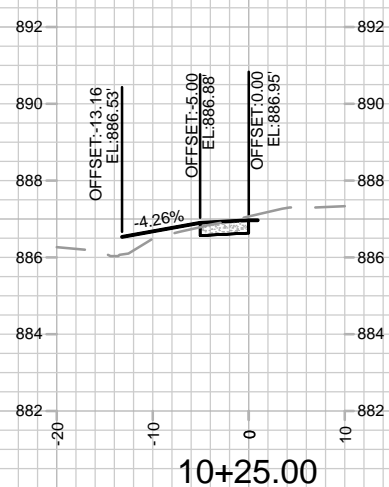
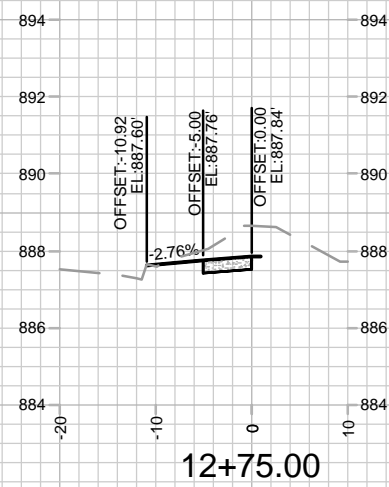
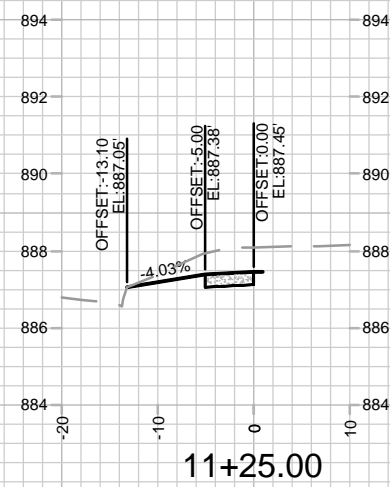
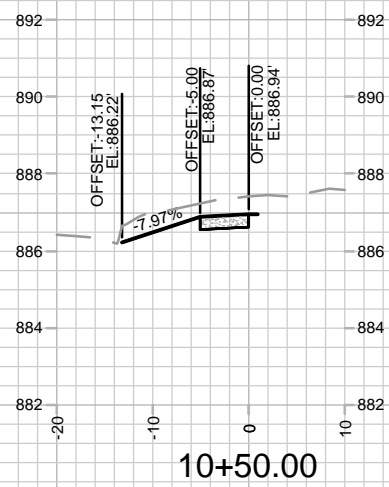
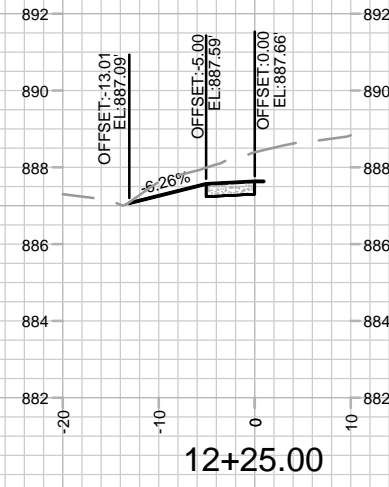
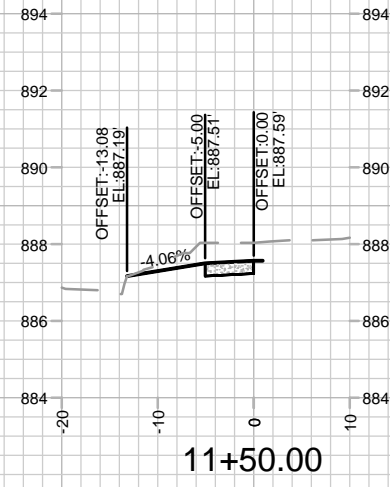
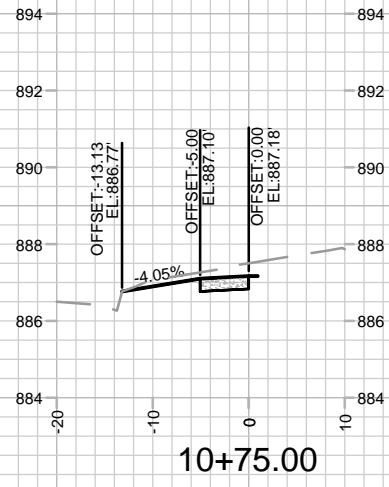


DATE	BY
REVISION	BY
MARK	DATE
14990	U-1

14990
MADISON, WI
9492
CONTRACT NO:

UTILITY PLAN & PROFILE
925 APPLGATE ROAD
M:\DESIGN\Projects\14990\CAD\sewers\14990SWR-PnP.dwg

14990
U-1



MARK	REVISION	DATE	BY

14990
MADISON, WI
9492
CONTRACT NO:

CROSS SECTION - APPEGATE ROAD
925 APPEGATE ROAD
M:\DESIGN\Projects\14990\CAD\Streets\14990EN-Xsections.dwg



14990
X-1