



Madison, Wisconsin

CITY OF MADISON

CITY ENGINEERING DIVISION

DEPARTMENT OF PUBLIC WORKS

PLAN OF PROPOSED IMPROVEMENT

INDEX OF SHEETS

SHEET NO. C14-C18 UTILITY PLAN & PROFILES

3030 OHMEDA DRIVE CSM

CITY PROJECT NO. 13825
CONTRACT NO. 9802

Rev4 - 07-19-23 - AJZ
Revise contract #

PUBLIC IMPROVEMENT PROJECT APPROVED

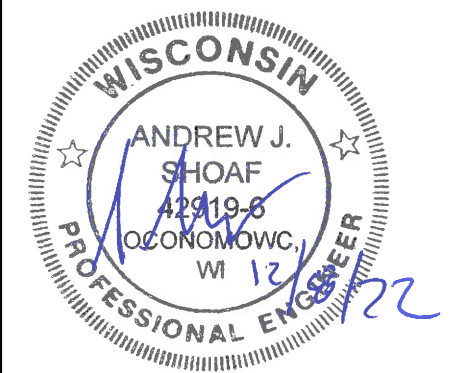
APPROVED DATE November 16, 2021

BY THE COMMON COUNCIL OF MADISON, WISCONSIN

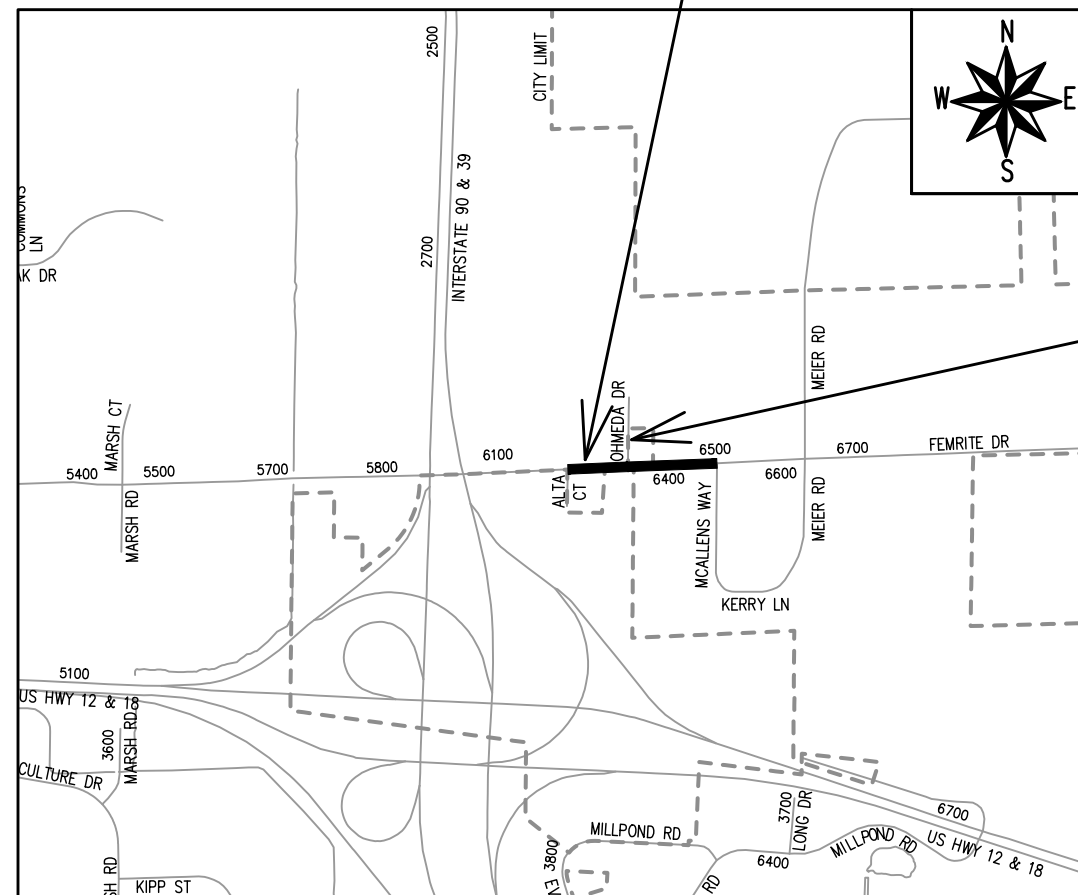
PUBLIC IMPROVEMENT DESIGN APPROVED BY:

City Engineer _____ Date _____

SANITARY SEWER DESIGNED BY:



PROJECT LOCATION



OHMEDA DRIVE STREET PLANS
(SEE PROJECT NO. 13810, CONTRACT NO. 8631)

CONVENTIONAL SIGNS	
FIELD VERIFY ALL UTILITY LOCATIONS	
GAS	— G —
STORM SEWER	— ST —
SANITARY SEWER	— SN —
WATER	— W —
BURIED ELECTRIC	— E —
OVERHEAD ELECTRIC	— OH —
POWER POLE	
ADA COMPLIANT RAMP W/ DETECTABLE WARNING FIELD	
COMBUSTIBLE FLUIDS	

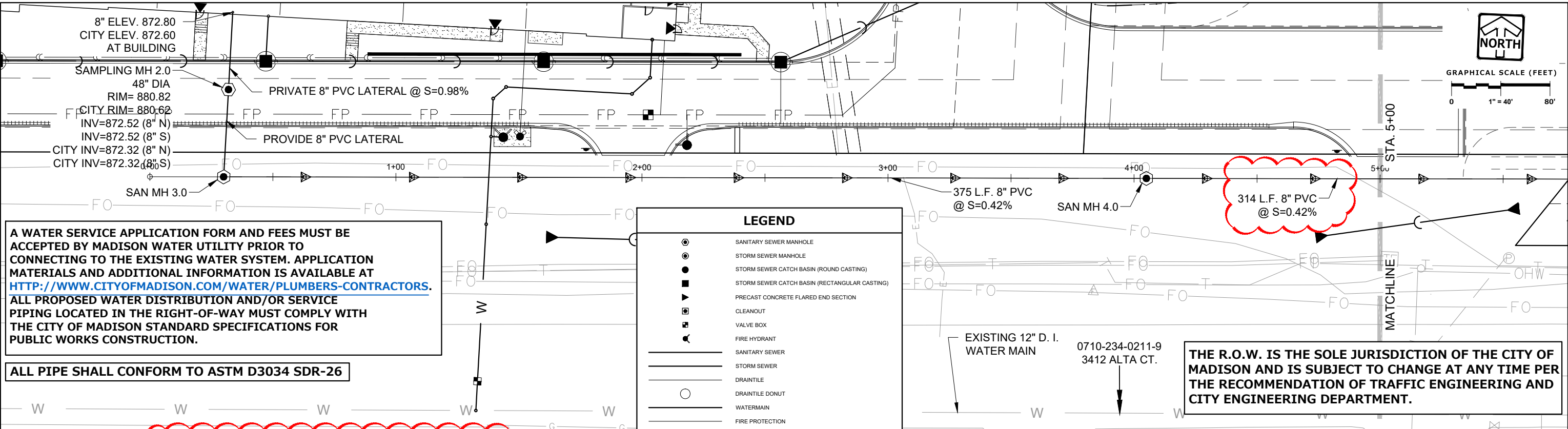
PLOT SCALE: 1 IN. = 1 FT. XREF

PLOT NAME: ---

REV. DATE: 9/1/2022 11:14 AM

ORIGINATOR: CITY_OF_MADISON

DRAFTED: MRC DESIGNED: TOM REVIEWED: TOM THESE PLANS AND DESIGNS ARE COPYRIGHT PROTECTED AND MAY NOT BE USED IN WHOLE OR IN PART WITHOUT THE WRITTEN CONSENT OF PINNACLE ENGINEERING GROUP, LLC



A WATER SERVICE APPLICATION FORM AND FEES MUST BE ACCEPTED BY MADISON WATER UTILITY PRIOR TO CONNECTING TO THE EXISTING WATER SYSTEM. APPLICATION MATERIALS AND ADDITIONAL INFORMATION IS AVAILABLE AT [HTTP://WWW.CITYOFMADISON.COM/WATER/PLUMBERS-CONTRACTORS](http://www.cityofmadison.com/water/plumbers-contractors). ALL PROPOSED WATER DISTRIBUTION AND/OR SERVICE PIPING LOCATED IN THE RIGHT-OF-WAY MUST COMPLY WITH THE CITY OF MADISON STANDARD SPECIFICATIONS FOR PUBLIC WORKS CONSTRUCTION.

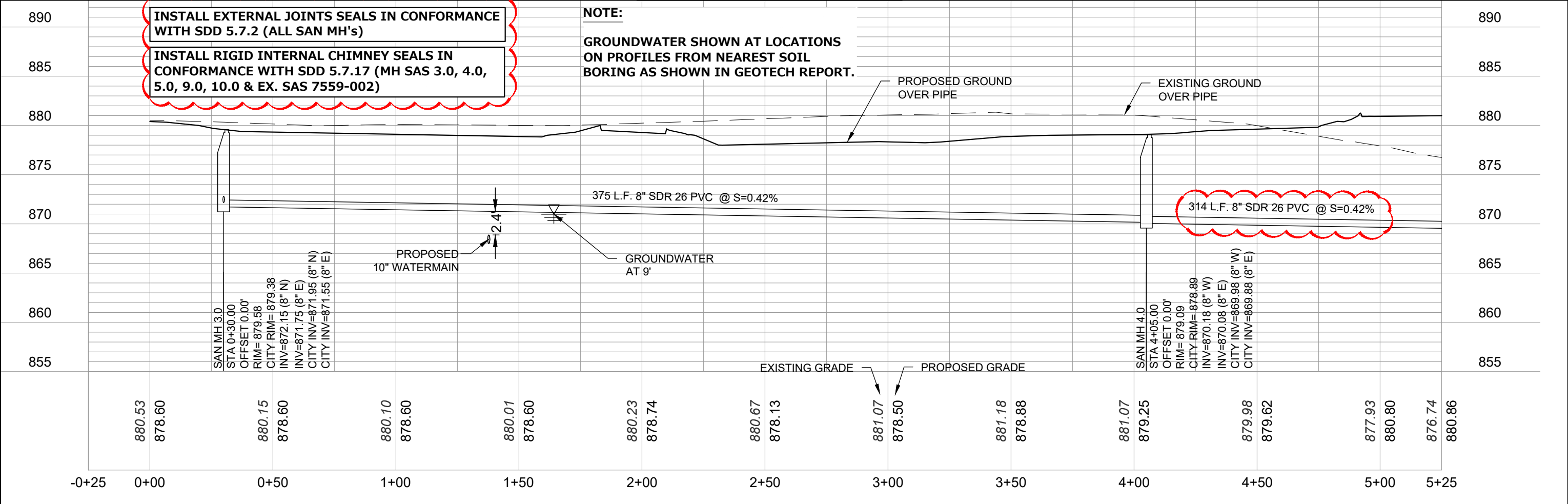
ALL PIPE SHALL CONFORM TO ASTM D3034 SDR-26

LEGEND	
	SANITARY SEWER MANHOLE
	STORM SEWER MANHOLE
	STORM SEWER CATCH BASIN (ROUND CASTING)
	STORM SEWER CATCH BASIN (RECTANGULAR CASTING)
	PRECAST CONCRETE FLARED END SECTION
	CLEANOUT
	VALVE BOX
	FIRE HYDRANT
	SANITARY SEWER
	STORM SEWER
	DRAIN TILE
	DRAIN TILE DONUT
	WATERMAIN
	FIRE PROTECTION

THE R.O.W. IS THE SOLE JURISDICTION OF THE CITY OF MADISON AND IS SUBJECT TO CHANGE AT ANY TIME PER THE RECOMMENDATION OF TRAFFIC ENGINEERING AND CITY ENGINEERING DEPARTMENT.

INSTALL EXTERNAL JOINTS SEALS IN CONFORMANCE WITH SDD 5.7.2 (ALL SAN MH's)
INSTALL RIGID INTERNAL CHIMNEY SEALS IN CONFORMANCE WITH SDD 5.7.17 (MH SAS 3.0, 4.0, 5.0, 9.0, 10.0 & EX. SAS 7559-002)

NOTE:
GROUNDWATER SHOWN AT LOCATIONS ON PROFILES FROM NEAREST SOIL BORING AS SHOWN IN GEOTECH REPORT.



PINNACLE ENGINEERING GROUP
 ENGINEERING | NATURAL RESOURCES | SURVEYING
 WISCONSIN OFFICE:
 20725 WATERTOWN ROAD, SUITE 100
 BROOKFIELD, WI 53186
 (262) 754-8888
 CHICAGO | MILWAUKEE | NATIONWIDE

3030 OHMEDA DRIVE CSM
MADISON, WISCONSIN

UTILITY PLAN

REVISIONS	
1	CITY REVISIONS 12/08/22
2	ADD CITY DATUM INVERTS 01/20/23
3	SANITARY REALIGNMENT 05/09/23
4	MOVE SANITARY MH 5.0 07/19/23

SHEET
C-14
C-29

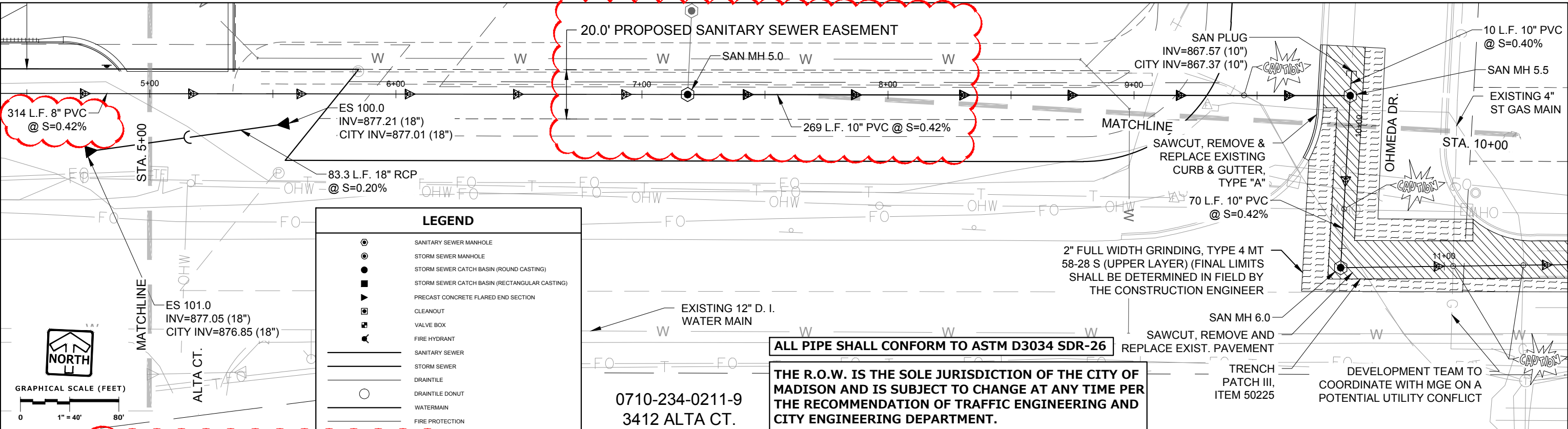
www.pinnacle-engr.com
FOR CONSTRUCTION
UTILITY PLAN
 © COPYRIGHT 2019

THESE PLANS AND DESIGNS ARE COPYRIGHT PROTECTED AND MAY NOT BE USED IN WHOLE OR IN PART WITHOUT THE WRITTEN CONSENT OF PINNACLE ENGINEERING GROUP, LLC

REVIEWED: TOM

DESIGNED: TOM

DRAWN: MRC



LEGEND

- SANITARY SEWER MANHOLE
- STORM SEWER MANHOLE
- STORM SEWER CATCH BASIN (ROUND CASTING)
- STORM SEWER CATCH BASIN (RECTANGULAR CASTING)
- ▴ PRECAST CONCRETE FLARED END SECTION
- CLEANOUT
- VALVE BOX
- FIRE HYDRANT
- SANITARY SEWER
- STORM SEWER
- DRAINTILE
- DRAINTILE DONUT
- WATERMAIN
- FIRE PROTECTION

0710-234-0211-9
3412 ALTA CT.

ALL PIPE SHALL CONFORM TO ASTM D3034 SDR-26

THE R.O.W. IS THE SOLE JURISDICTION OF THE CITY OF MADISON AND IS SUBJECT TO CHANGE AT ANY TIME PER THE RECOMMENDATION OF TRAFFIC ENGINEERING AND CITY ENGINEERING DEPARTMENT.

INSTALL EXTERNAL JOINTS SEALS IN CONFORMANCE WITH SDD 5.7.2 (ALL SAN MH'S)

INSTALL RIGID INTERNAL CHIMNEY SEALS IN CONFORMANCE WITH SDD 5.7.17 (MH SAS 3.0, 4.0, 5.0, 9.0, 10.0 & EX. SAS 7559-002)

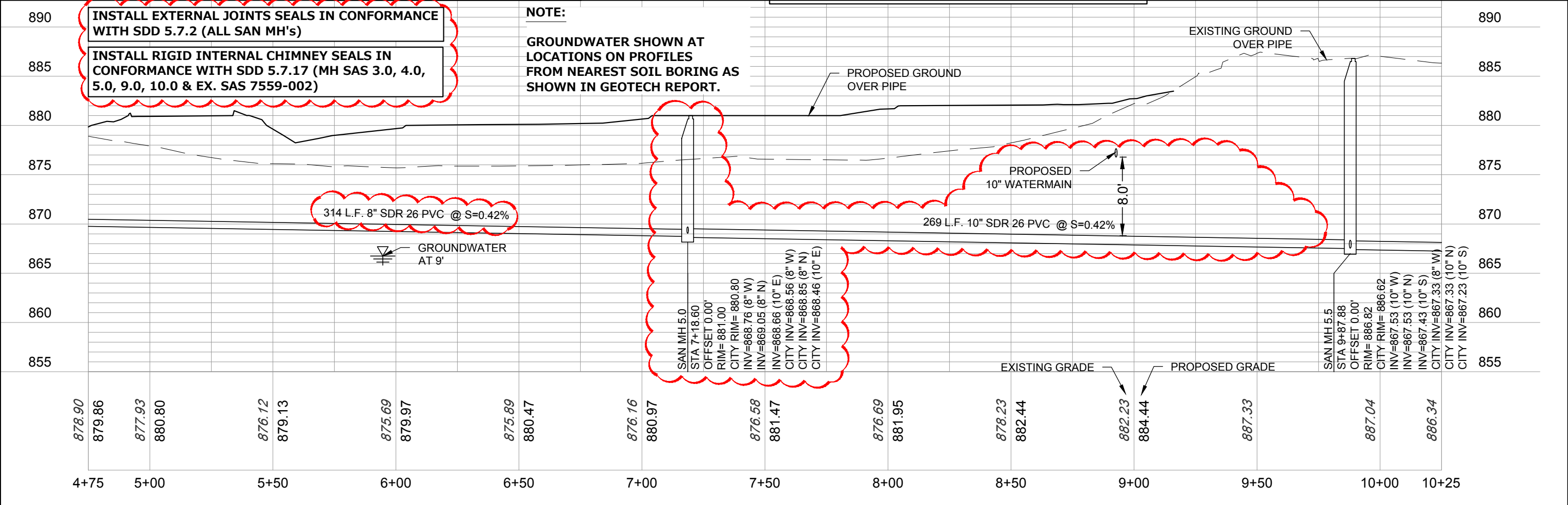
NOTE:

GROUNDWATER SHOWN AT LOCATIONS ON PROFILES FROM NEAREST SOIL BORING AS SHOWN IN GEOTECH REPORT.

314 L.F. 8" SDR 26 PVC @ S=0.42%

SAN MH 5.0
STA 7+18.60
OFFSET 0.00'
RIM=881.00
CITY RIM=880.80
INV=868.76 (8" W)
INV=869.05 (8" N)
INV=868.66 (10" E)
CITY INV=868.56 (8" W)
CITY INV=868.85 (8" N)
CITY INV=868.46 (10" E)

SAN MH 5.5
STA 9+87.88
OFFSET 0.00'
RIM=886.82
CITY RIM=886.62
INV=867.53 (10" W)
INV=867.53 (10" N)
INV=867.43 (10" S)
CITY INV=867.33 (8" W)
CITY INV=867.33 (10" N)
CITY INV=867.23 (10" S)



PLAN | DESIGN | DELIVER
www.pinnacle-engr.com

PINNACLE ENGINEERING GROUP
ENGINEERING | NATURAL RESOURCES | SURVEYING

WISCONSIN OFFICE:
20725 WATERTOWN ROAD, SUITE 100
BROOKFIELD, WI 53186
(262) 754-8888
CHICAGO | MILWAUKEE | NATIONWIDE

3030 OHMEDA DRIVE CSM

MADISON, WISCONSIN

UTILITY PLAN

REVISIONS

1	CITY REVISIONS	12/08/22
2	ADD CITY DATUM INVERTS	01/20/23
3	SANITARY REALIGNMENT	05/09/23
4	MOVE SANITARY MH 5.0	07/19/23

PEG JOB No. 1933.00
PEG PIN ABA
START DATE 08/05/20
SCALE 1" = 40'

SHEET
C-15
C-29

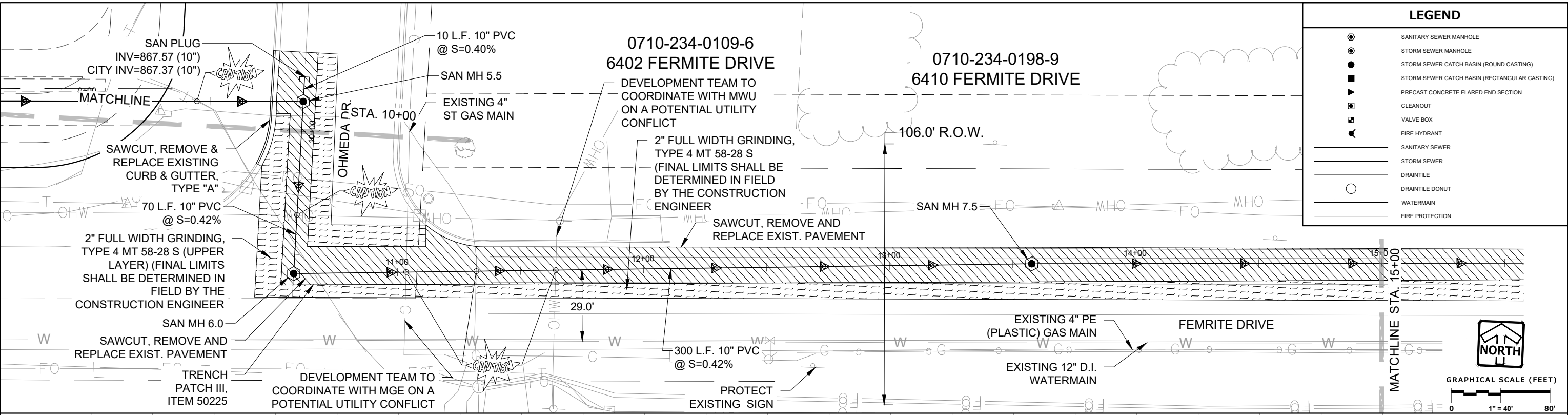
© COPYRIGHT 2019

THESE PLANS AND DESIGNS ARE COPYRIGHT PROTECTED AND MAY NOT BE USED IN WHOLE OR IN PART WITHOUT THE WRITTEN CONSENT OF PINNACLE ENGINEERING GROUP, LLC

REVIEWED: TOM

DESIGNED: TOM

DRAFTED: MRC

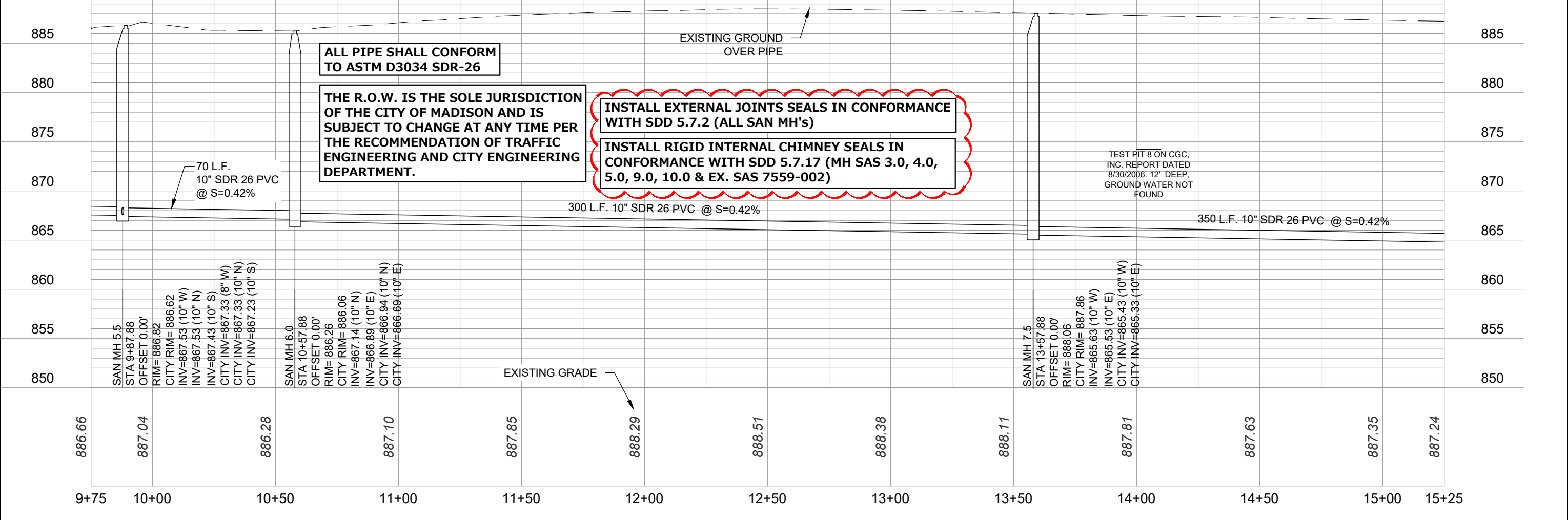


LEGEND	
	SANITARY SEWER MANHOLE
	STORM SEWER MANHOLE
	STORM SEWER CATCH BASIN (ROUND CASTING)
	STORM SEWER CATCH BASIN (RECTANGULAR CASTING)
	PRECAST CONCRETE FLARED END SECTION
	CLEANOUT
	VALVE BOX
	FIRE HYDRANT
	SANITARY SEWER
	STORM SEWER
	DRAINTILE
	DRAINTILE DONUT
	WATERMAIN
	FIRE PROTECTION

www.pinnacle-engr.com

FOR CONSTRUCTION

UTILITY PLAN



PINNACLE ENGINEERING GROUP
 ENGINEERING | NATURAL RESOURCES | SURVEYING
 WISCONSIN OFFICE: 20725 WATERTOWN ROAD, SUITE 100, BROOKFIELD, WI 53186 (262) 754-8888
 CHICAGO | MILWAUKEE | NATIONWIDE

3030 OHMEDA DRIVE CSM
MADISON, WISCONSIN

UTILITY PLAN

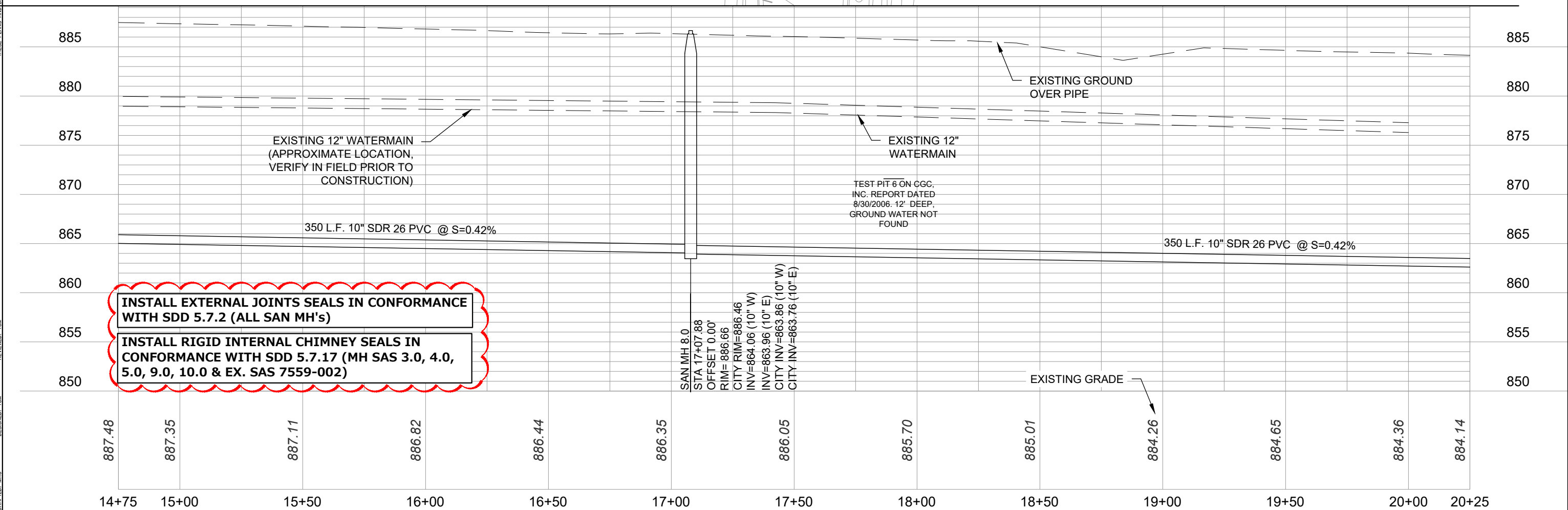
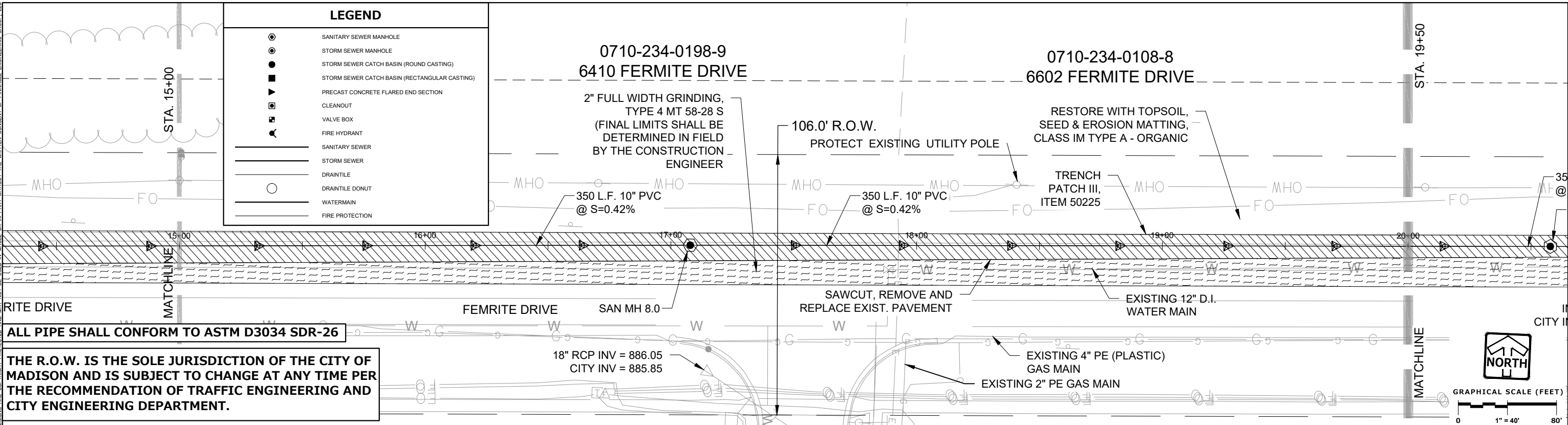
REVISIONS	
1	CITY REVISIONS 12/08/22
2	ADD CITY DATUM INVERTS 01/20/23
3	SANITARY REALIGNMENT 05/09/23
4	MOVE SANITARY MH 5.0 07/19/23

SHEET
C-16
C-29

THESE PLANS AND DESIGNS ARE COPYRIGHT PROTECTED AND MAY NOT BE USED IN WHOLE OR IN PART WITHOUT THE WRITTEN CONSENT OF PINNACLE ENGINEERING GROUP, LLC

DESIGNED: MRC
REVIEWED: TOM

© COPYRIGHT 2019



INSTALL EXTERNAL JOINTS SEALS IN CONFORMANCE WITH SDD 5.7.2 (ALL SAN MH'S)

INSTALL RIGID INTERNAL CHIMNEY SEALS IN CONFORMANCE WITH SDD 5.7.17 (MH SAS 3.0, 4.0, 5.0, 9.0, 10.0 & EX. SAS 7559-002)

PINNACLE ENGINEERING GROUP
ENGINEERING | NATURAL RESOURCES | SURVEYING

WISCONSIN OFFICE:
20725 WATERTOWN ROAD, SUITE 100
BROOKFIELD, WI 53186
(262) 754-8888
CHICAGO | MILWAUKEE | NATIONWIDE

PLAN | DESIGN | DELIVER
www.pinnacle-engr.com

3030 OHMEDA DRIVE CSM

MADISON, WISCONSIN

UTILITY PLAN

REVISIONS	
1	CITY REVISIONS 12/08/22
2	ADD CITY DATUM INVERTS 01/20/23
3	SANITARY REALIGNMENT 05/09/23
4	MOVE SANITARY MH 5.0 07/19/23

REG. JOB No. 1933.00
REG. PH. AREA
START DATE 08/05/20
SCALE 1" = 40'

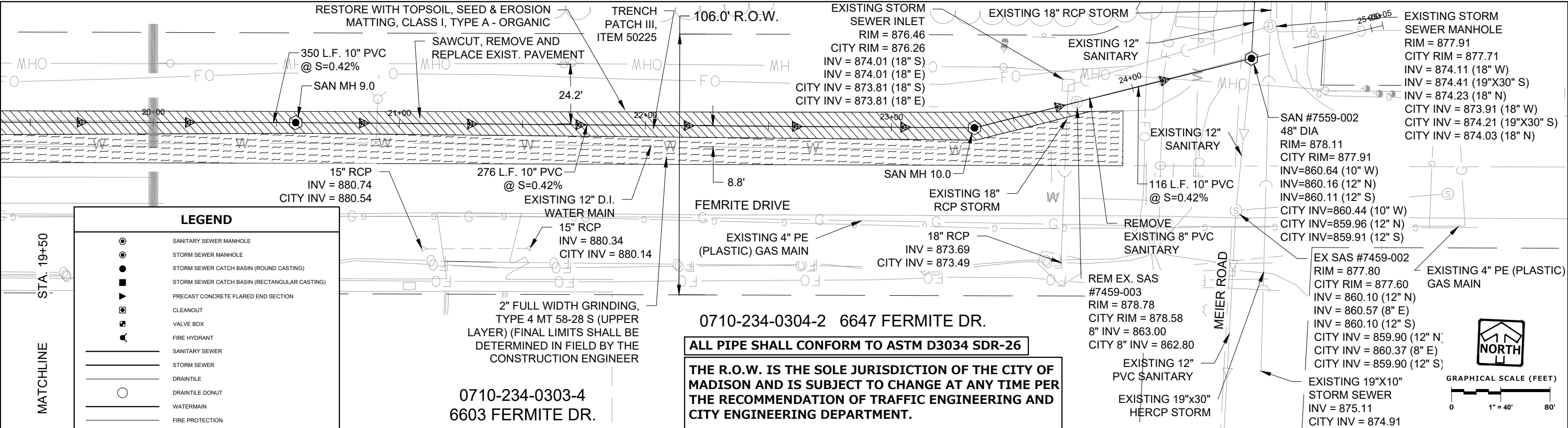
SHEET
C-17
C-29

www.pinnacle-engr.com
FOR CONSTRUCTION
UTILITY PLAN

THESE PLANS AND DESIGNS ARE COPYRIGHT PROTECTED AND MAY NOT BE USED IN WHOLE OR IN PART WITHOUT THE WRITTEN CONSENT OF PINNACLE ENGINEERING GROUP, LLC

DESIGNED: MRC
REVIEWED: TOM

DATE: 08/05/20

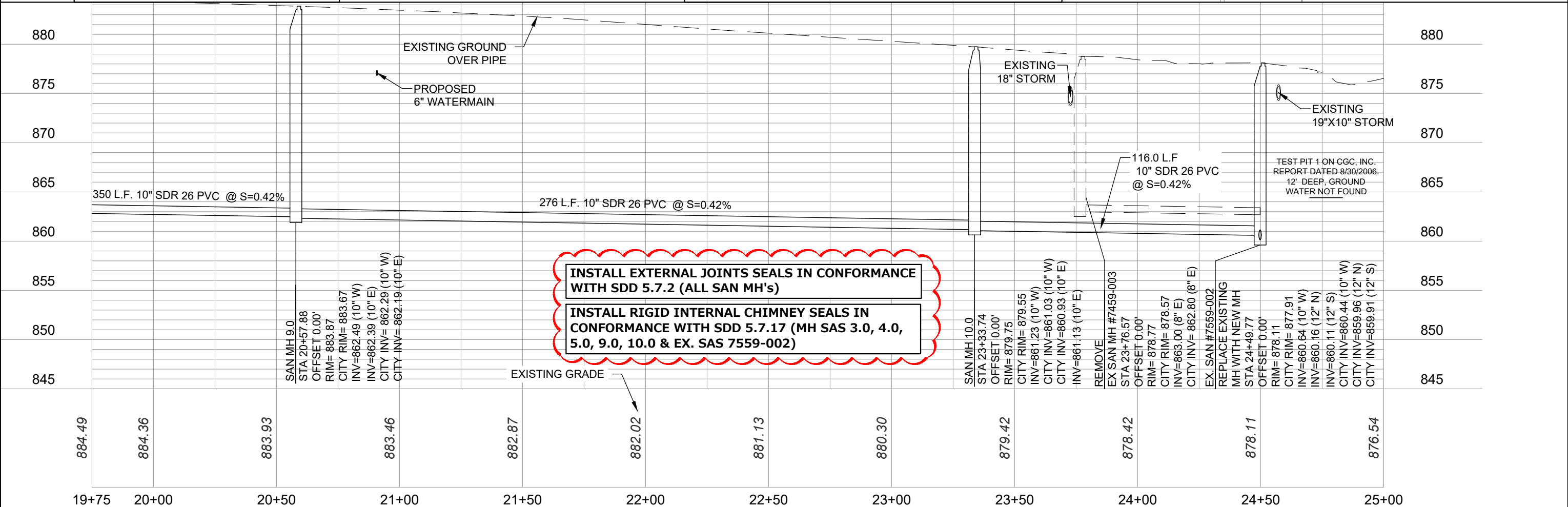
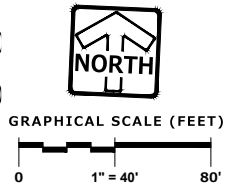


LEGEND

- SANITARY SEWER MANHOLE
- STORM SEWER MANHOLE
- STORM SEWER CATCH BASIN (ROUND CASTING)
- STORM SEWER CATCH BASIN (RECTANGULAR CASTING)
- PRECAST CONCRETE FLARED END SECTION
- CLEANOUT
- VALVE BOX
- FIRE HYDRANT
- SANITARY SEWER
- STORM SEWER
- DRANTILE
- DRANTILE DONUT
- WATERMAIN
- FIRE PROTECTION

0710-234-0304-2 6647 FERMITE DR.
ALL PIPE SHALL CONFORM TO ASTM D3034 SDR-26
THE R.O.W. IS THE SOLE JURISDICTION OF THE CITY OF MADISON AND IS SUBJECT TO CHANGE AT ANY TIME PER THE RECOMMENDATION OF TRAFFIC ENGINEERING AND CITY ENGINEERING DEPARTMENT.

0710-234-0303-4 6603 FERMITE DR.



INSTALL EXTERNAL JOINTS SEALS IN CONFORMANCE WITH SDD 5.7.2 (ALL SAN MH'S)
INSTALL RIGID INTERNAL CHIMNEY SEALS IN CONFORMANCE WITH SDD 5.7.17 (MH SAS 3.0, 4.0, 5.0, 9.0, 10.0 & EX. SAS 7559-002)

PLAN | DESIGN | DELIVER
 www.pinnacle-engr.com

PINNACLE ENGINEERING GROUP
 ENGINEERING | NATURAL RESOURCES | SURVEYING

WISCONSIN OFFICE:
 20725 WATERTOWN ROAD, SUITE 100
 BROOKFIELD, WI 53186
 (262) 754-8888
 CHICAGO | MILWAUKEE | NATIONWIDE

3030 OHMEDA DRIVE CSM
MADISON, WISCONSIN

UTILITY PLAN

REVISIONS

1	CITY REVISIONS	12/08/22
2	ADD CITY DATUM INVERTS	01/20/23
3	SANITARY REALIGNMENT	05/09/23
4	MOVE SANITARY MH 5.0	07/19/23

REG. JOB No. 1933.00
 REG. No. ABA
 START DATE 08/05/20
 SCALE 1" = 40'

SHEET C-18 C-29

www.pinnacle-engr.com

FOR CONSTRUCTION

UTILITY PLAN © COPYRIGHT 2019