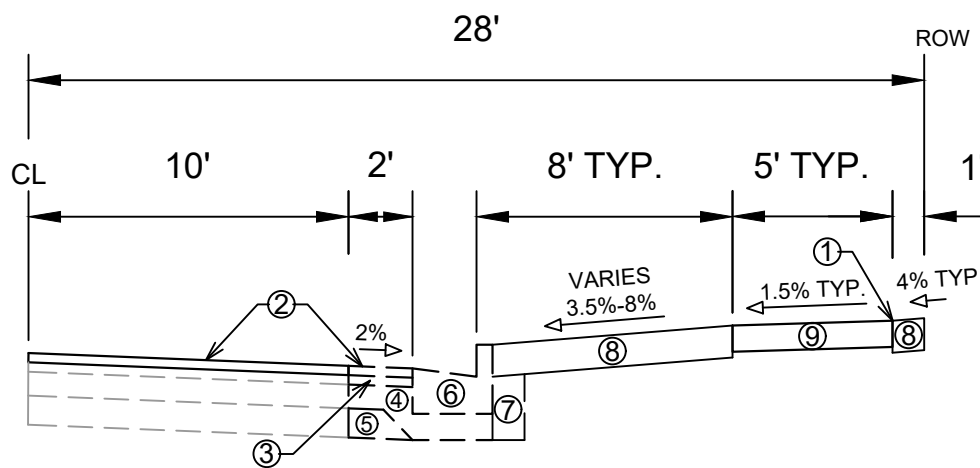


TYPICAL SECTION
FISH HATCHERY ROAD SIDEWALK RIGHT
 STA 100+98.49 TO STA 108+35.07

- ① POINT REFERRED TO ON PLAN
- ⑦ FILL INCIDENTAL TO CURB AND GUTTER INSTALLATION
- ⑧ RESTORE DISTURBED AREAS W/ 6" TOPSOIL, SEED, AND EROSION MATTING
- ⑨ 5" CONCRETE SIDEWALK

SPECIAL NOTES:

- TYPICAL SECTION NOT TO SCALE



TYPICAL SECTION
MIDLAND STREET SIDEWALK RIGHT
 STA 200+37.66 TO STA 203+50.00

- ① POINT REFERRED TO ON PLAN
- ② 2.00" HMA PAVEMENT, TYPE 4 LT 58-28 S (UPPER LAYER)
- ③ 2.50" HMA PAVEMENT, TYPE 3 LT 58-28 S (LOWER LAYER)
- ④ 6" GRADATION 2 CRUSHED AGGREGATE BASE COURSE (UPPER LAYER)
- ⑤ 6" GRADATION 1 CRUSHED AGGREGATE BASE COURSE (LOWER LAYER)
- ⑥ CONCRETE CURB AND GUTTER TYPE 'A', SEE P-SHEETS FOR LOCATIONS
- ⑦ FILL INCIDENTAL TO CURB AND GUTTER INSTALLATION
- ⑧ RESTORE DISTURBED AREAS W/ 6" TOPSOIL, SEED, AND EROSION MATTING
- ⑨ 5" CONCRETE SIDEWALK

SPECIAL NOTES:

- TYPICAL SECTION NOT TO SCALE



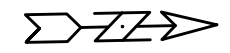
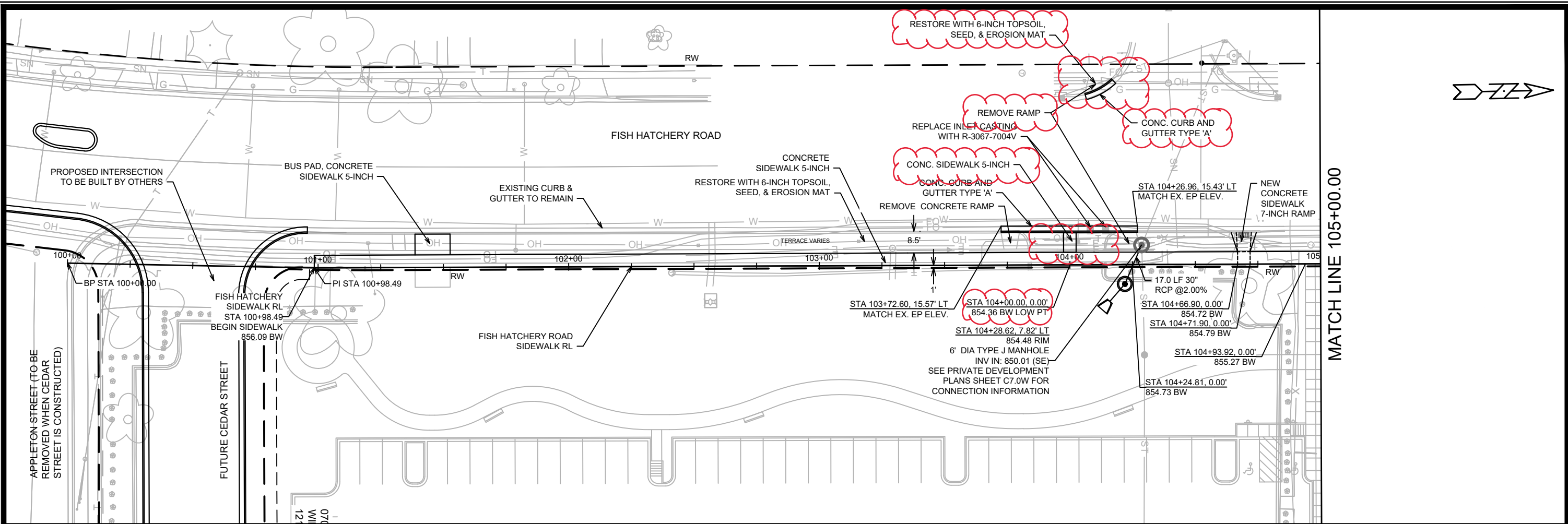
REVISED	DATE	BY
SIDEWALK UPDATES	05/13/22	AJZ
REVISION	DATE	NTS
Designed By: AJZ	Date: 5/11/2022 11:08 AM	Scale: NTS
12948	12948	D-2

12948
 MADISON, WI
 8894
 CONTRACT NO:

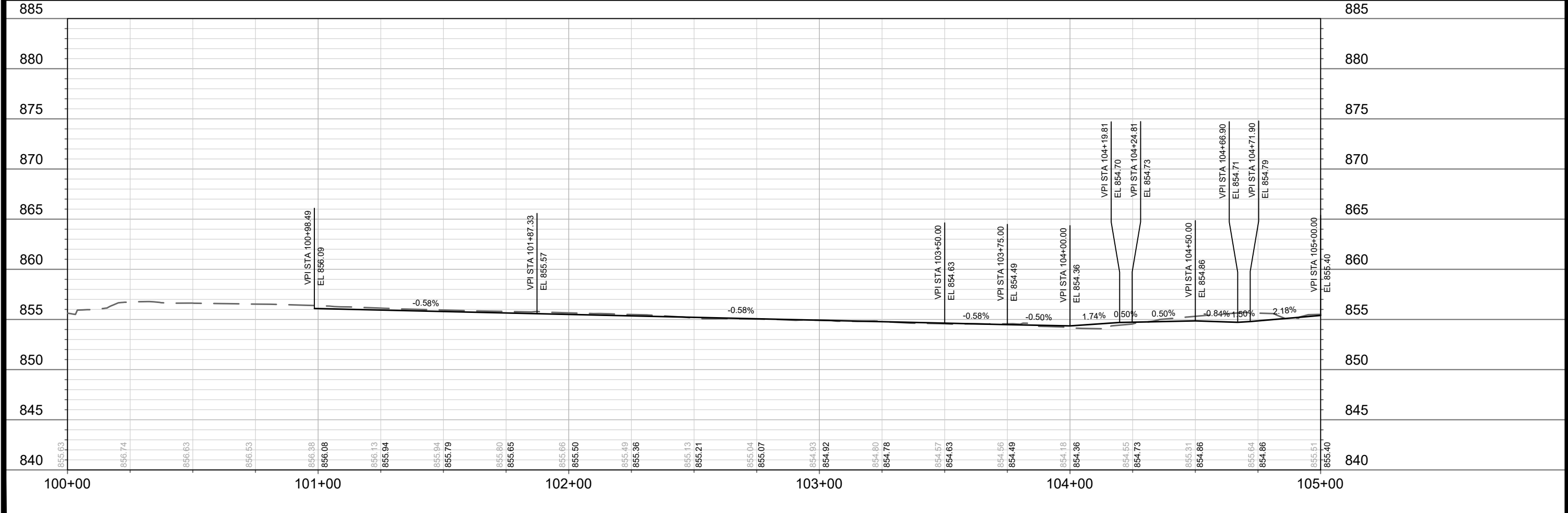
TYPICAL SECTIONS
 SSM FISH HATCHERY RIAD CLINIC & CSM
 M:\DESIGN\Projects\12948\CAD\Plan Sheets\12948EN-Typicals.dwg



12948
 D-2



MATCH LINE 105+00.00



REV 4	CURB RAMP REMOVAL	08/17/22	AJZ
REV 3	CURB RAMP UPDATE	08/04/22	AJZ
MARK	REVISION	DATE	BY
Designed By: AJZ Date: 8/17/2022 3:43 PM Scale: 1" = 40'			
12948			P-1

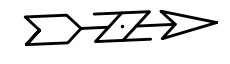
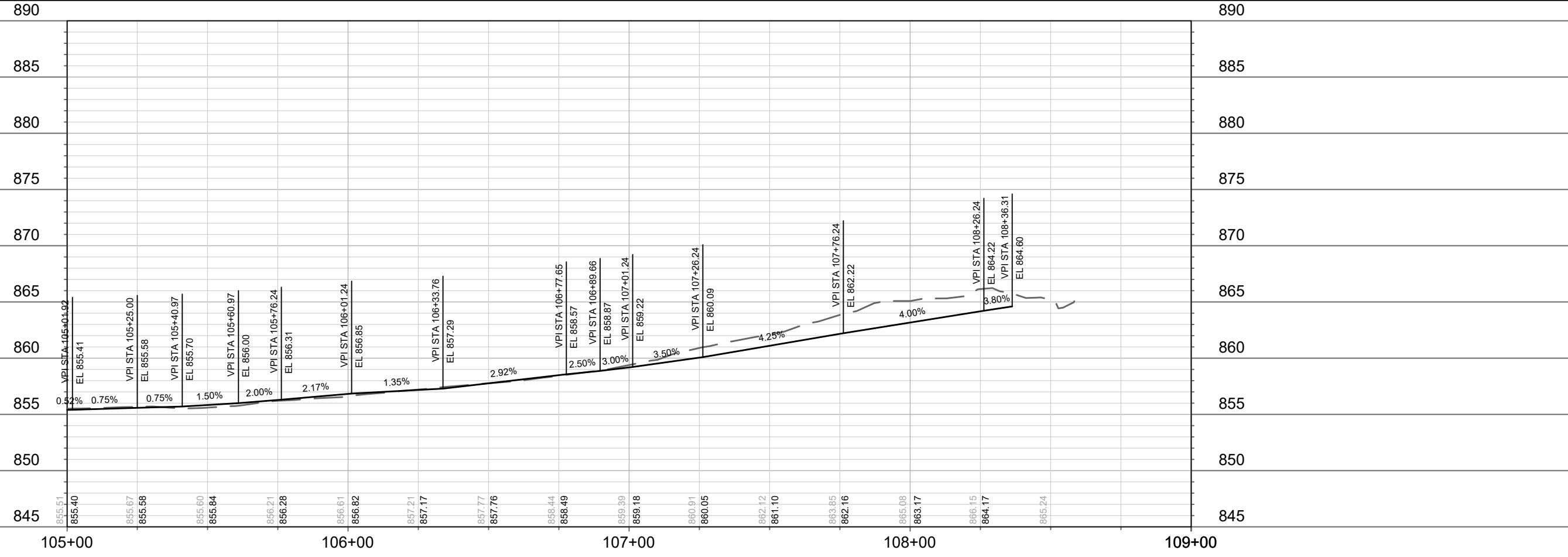
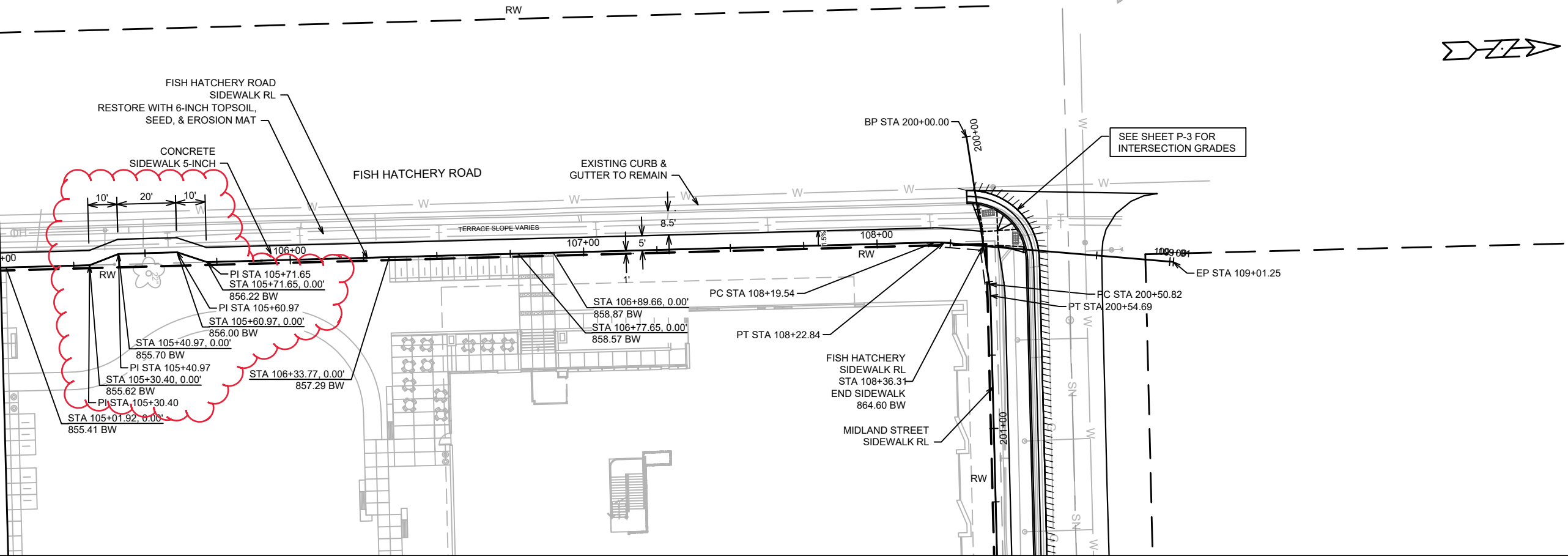
12948
MADISON, WI
CONTRACT NO: 8894

FISH HATCHERY ROAD SIDEWALK PLAN & PROFILE
SSM FISH HATCHERY RIAD CLINIC & CSM
M:\DESIGN\Projects\12948\CAD\Plan Sheets\12948EN-PnP SW Fish Hatch&Midland.dwg



12948
P-1

MATCH LINE 105+00.00



SEE SHEET P-3 FOR INTERSECTION GRADES

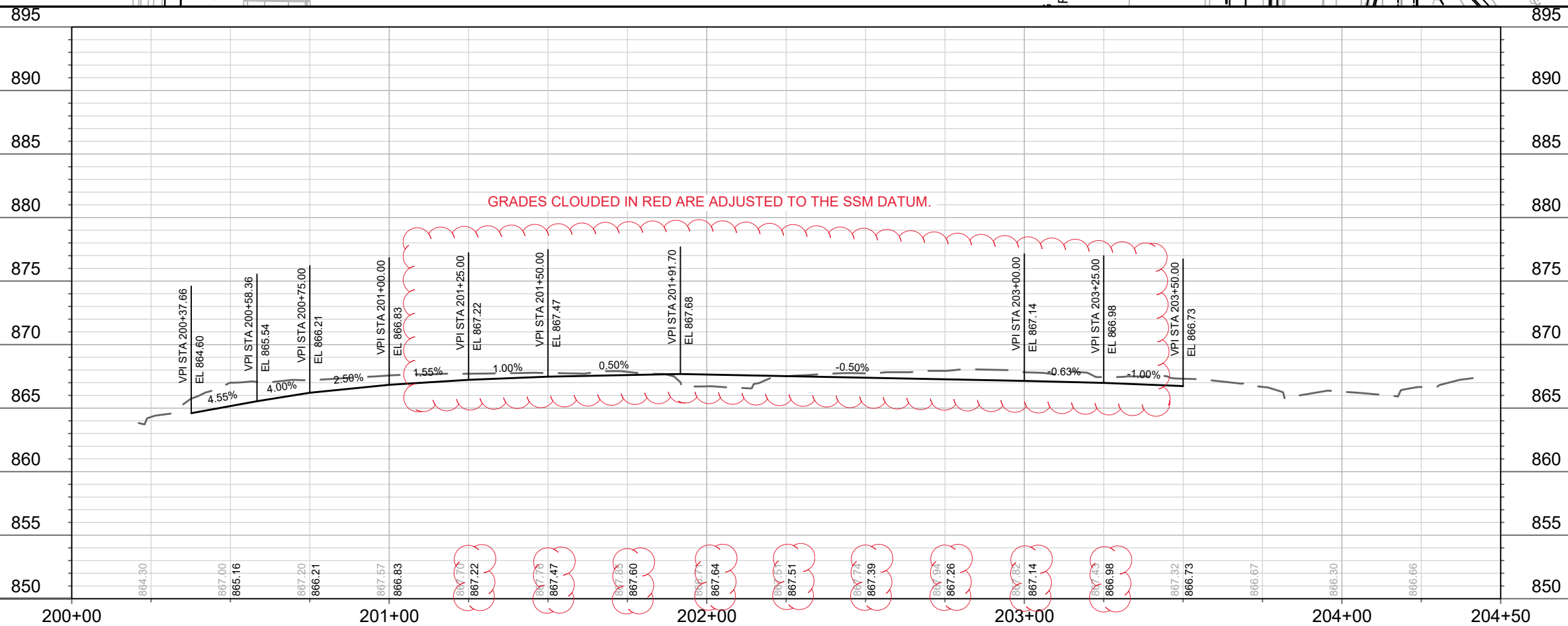
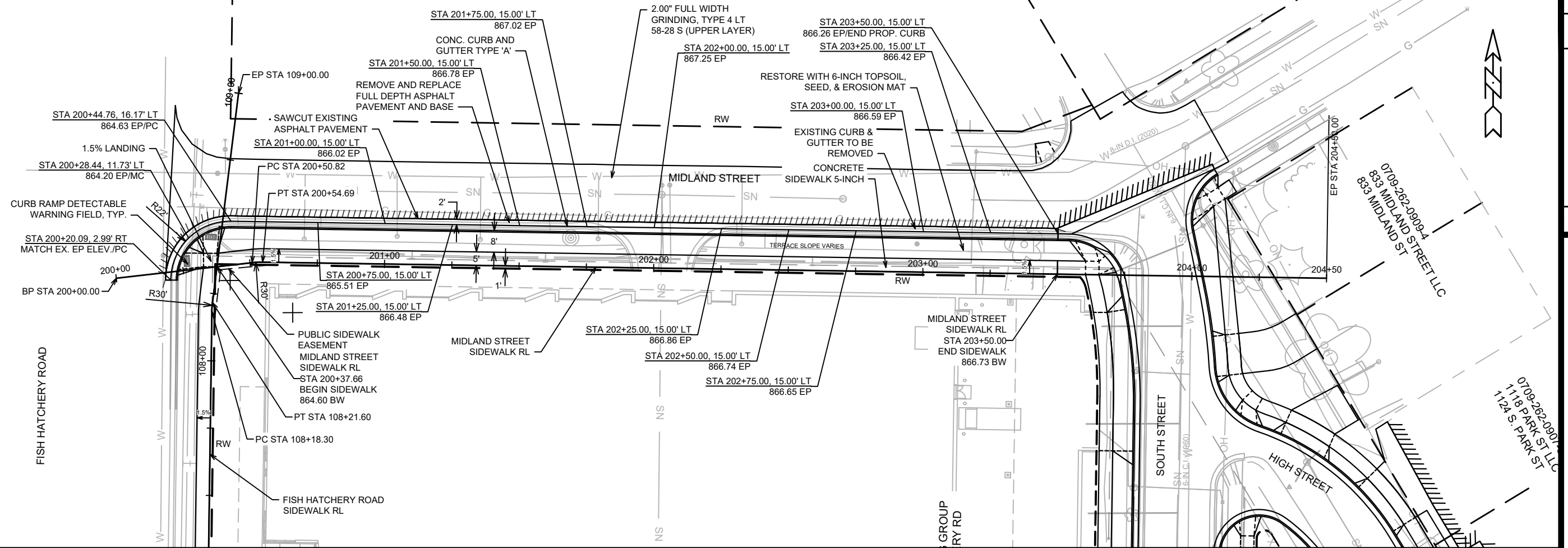
REV	DATE	BY
1	05/13/22	AJZ
SIDEWALK UPDATE		
REVISION	DATE	BY
1	5/11/2022	10:54 AM
DESIGNED BY	SCALE	
AJZ	1" = 40'	
12948		
P-2		

12948
MADISON, WI
CONTRACT NO: 8894

FISH HATCHERY ROAD SIDEWALK PLAN & PROFILE
SSM FISH HATCHERY RIAD CLINIC & CSM
M:\DESIGN\Projects\12948\CAD\Plan Sheets\12948EN-PnP SW Fish Hatch&Midland.dwg



12948
P-2



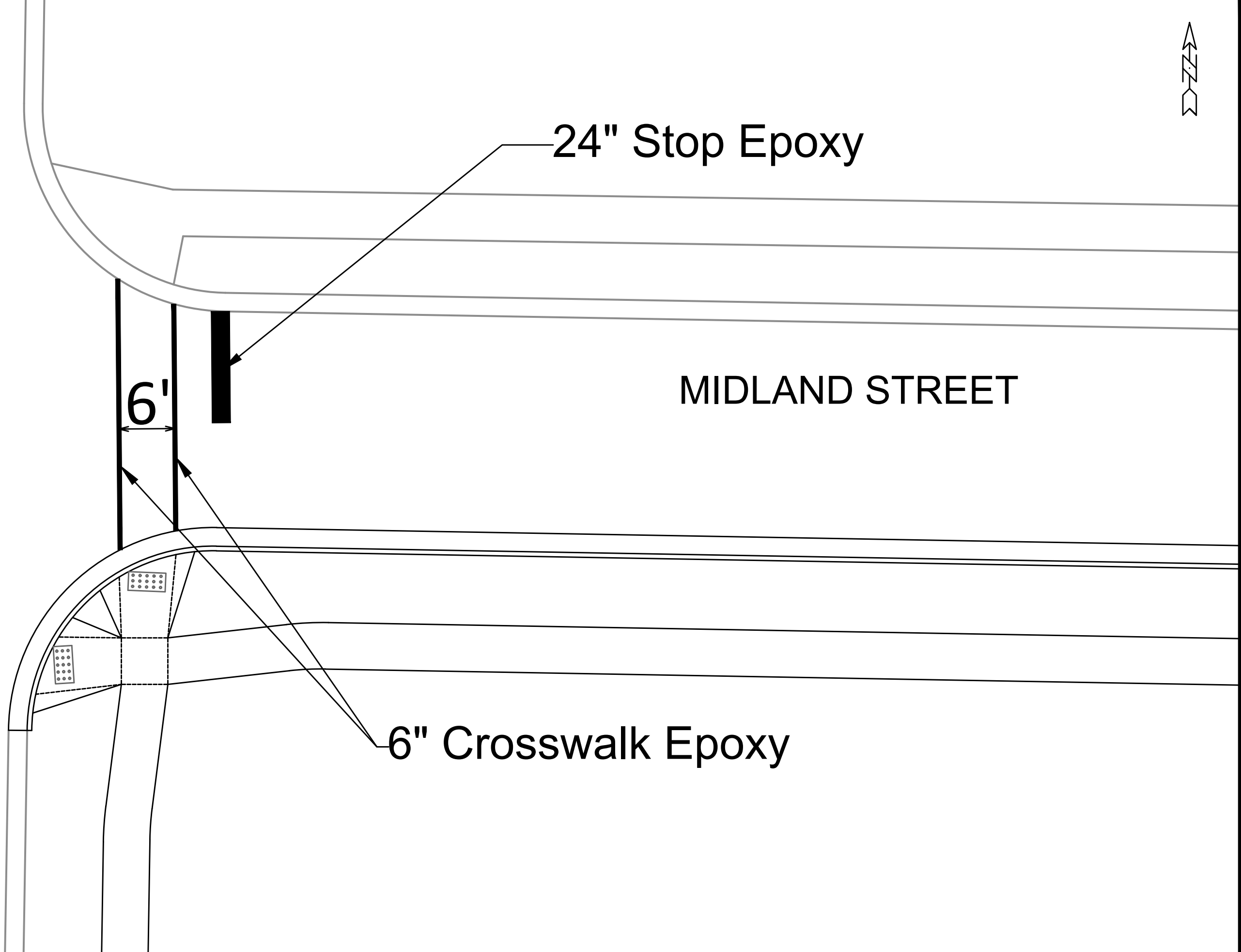
DATE	BY
REVISION	
MARK	
Designed By: ALZ	Date: 10/11/2021 3:46 PM
Scale: 1" = 40'	
12948	P-3

12948
MADISON, WI
8894
CONTRACT NO:

MIDLAND STREET SIDEWALK PLAN & PROFILE
SSM FISH HATCHERY RIAD CLINIC & CSM
M:\DESIGN\Projects\12948\CAD\Plan Sheets\12948EN-PnP SW Fish Hatch&Midland.dwg



FISH HATCHERY ROAD




6'

24" Stop Epoxy

6" Crosswalk Epoxy

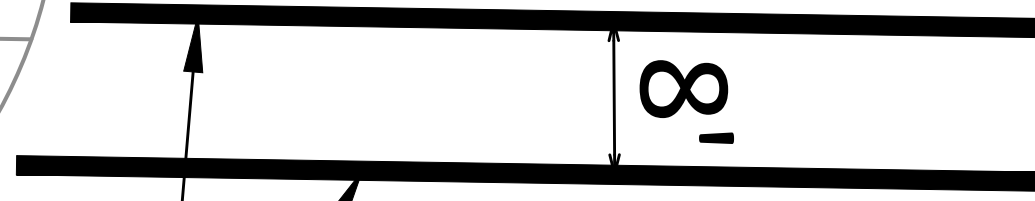
MIDLAND STREET



	12948	12948
	M-1	M-1
PAVEMENT MARKING PLAN	12948	MARK
SOUTH STREET	MADISON.WI	REVISION
M:\DESIGN\Projects\12948\CAD\Traffic\12948TE-P.vmt-Mrk.dwg	8559	DATE
	CONTRACT NO:	Scale: 1:40

SPRUCE STREET

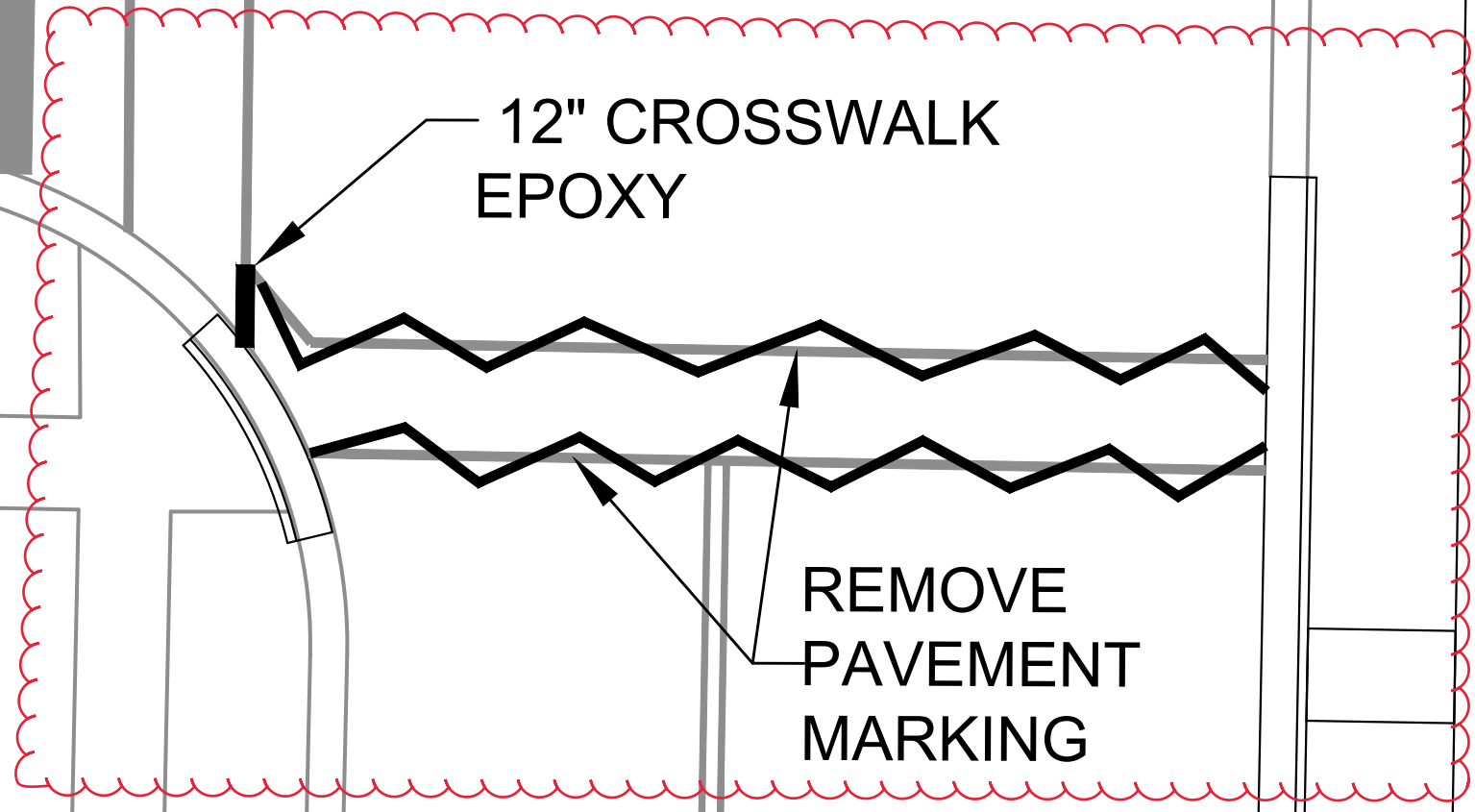
FISH HATCHERY ROAD



12" CROSSWALK
EPOXY

12" CROSSWALK
EPOXY

REMOVE
PAVEMENT
MARKING



REV4	CROSS WALK REMOVAL	08/17/22	AJZ
REV3	CURB RAMP UPDATE	08/04/22	AJZ
MARK	REVISION	DATE	BY
12948	Designed By: SDM	Date: 8/16/2022 3:43 PM	Scale: 1:10
M-2			

12948
MADISON.WI
8559
CONTRACT NO:

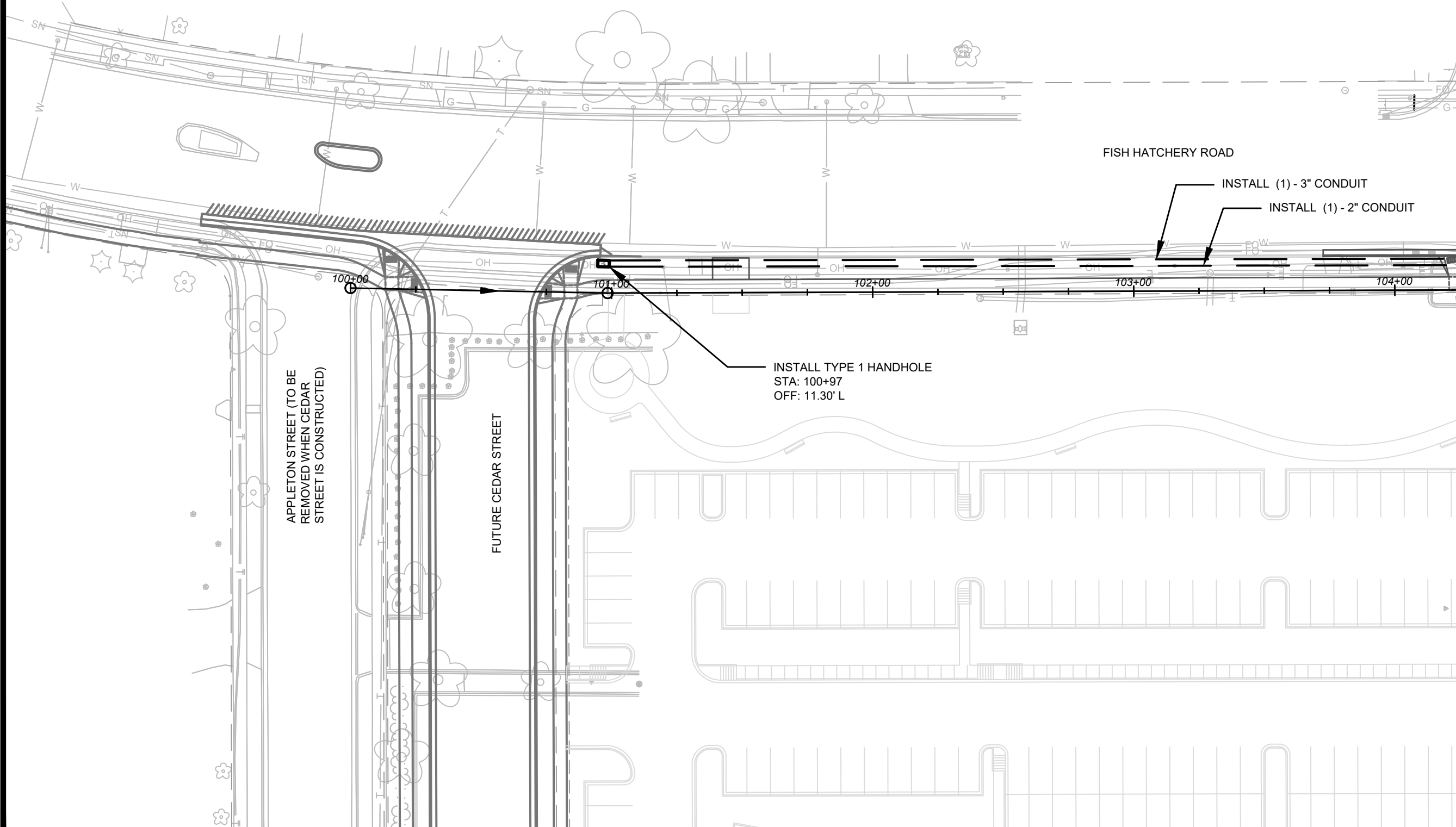
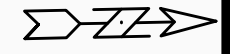
PAVEMENT MARKING PLAN
SOUTH STREET
M:\DESIGN\Projects\12948\CAD\Traffic\12948TE-Pvmt-Mrk.dwg



12948
M-2

GENERAL ELECTRICAL NOTES:

1. ALL LOCATIONS ARE APPROXIMATE. TRAFFIC ENGINEER SHALL APPROVE FINAL LOCATIONS INCLUDING SETBACK IN THE FIELD. AFTER CONTRACTOR SURVEYS STAKING, THE CONTRACTOR SHALL NOTIFY GRETCHEN AVILES PINEIRO (266-4899), AT LEAST 24-HOURS IN ADVANCE OF NEEDING BASE LOCATION MARKED.
2. THE CONTRACTOR SHALL DO ALL WORK IN ACCORDANCE WITH CITY OF MADISON STANDARD SPECIFICATIONS FOR PUBLIC WORKS CONSTRUCTION 2020 EDITION AND ALL ADDENDUMS THERETO.
3. ALL CONDUIT SHALL BE PVC SCHEDULE 80 UNDER PAVEMENT OR SCHEDULE 40 OTHERWISE. PULL WIRE REQUIRED AS PER STANDARD SPECIFICATIONS.
4. THE CONTRACTOR SHALL CALL TROY VANT (395-1975) AT THE TRAFFIC ENGINEERING SHOP AT LEAST 24-HOURS IN ADVANCE OF BURYING CONDUIT TO ARRANGE FOR INSPECTION.



MARK	REVISION	DATE	BY
Designed By: GMA	Date: 8/24/2020 3:46 PM		
12948			

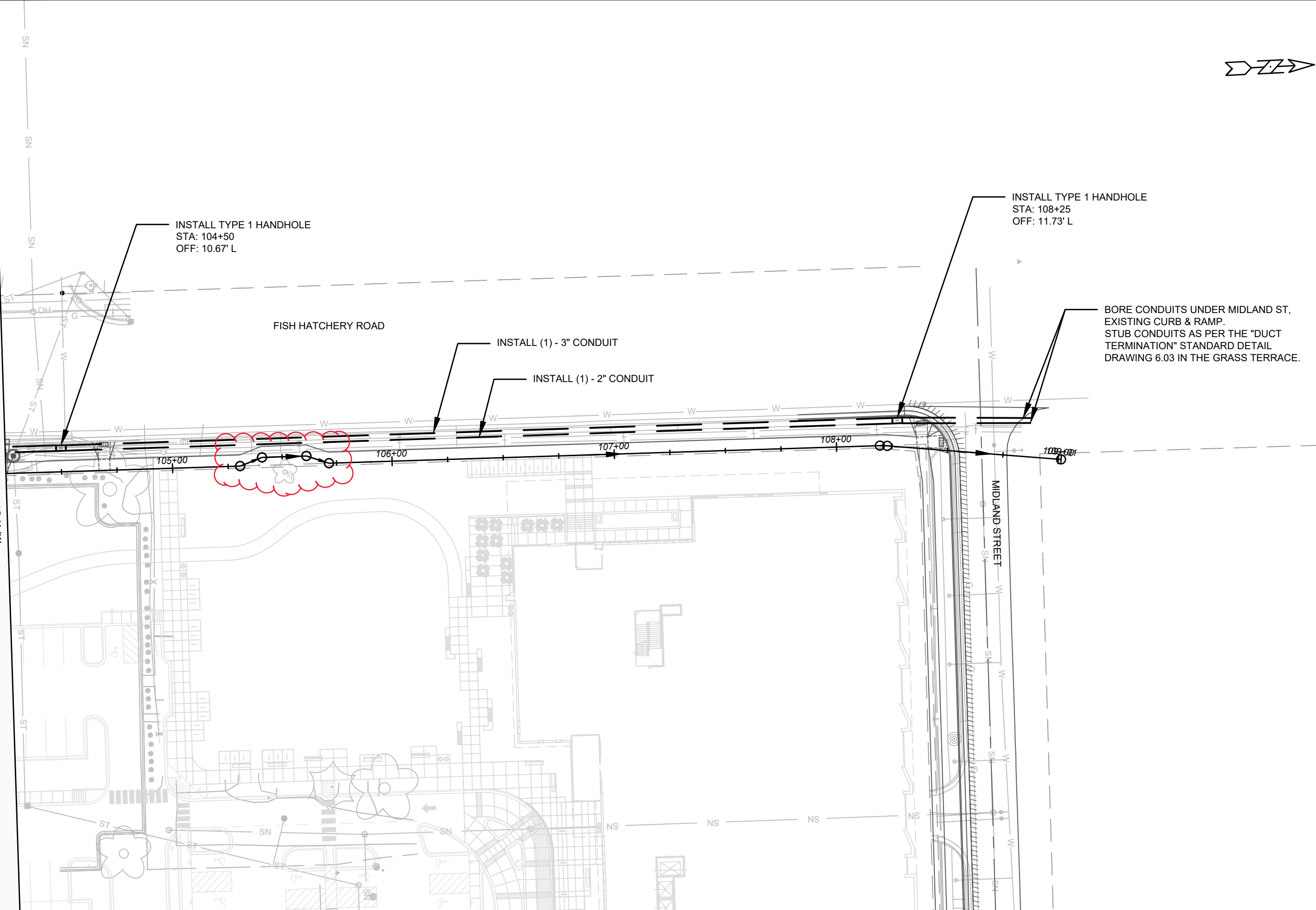
12948
MADISON, WI
CONTRACT NO: 8894

ELECTRICAL PLANS
SSM FISH HATCHERY RIAD CLINIC & CSM
M:\DESIGN\Projects\12948\CAD\Traffic\12948TE-Electrical.dwg



12948
E-1

MATCHLINE STA 104+25



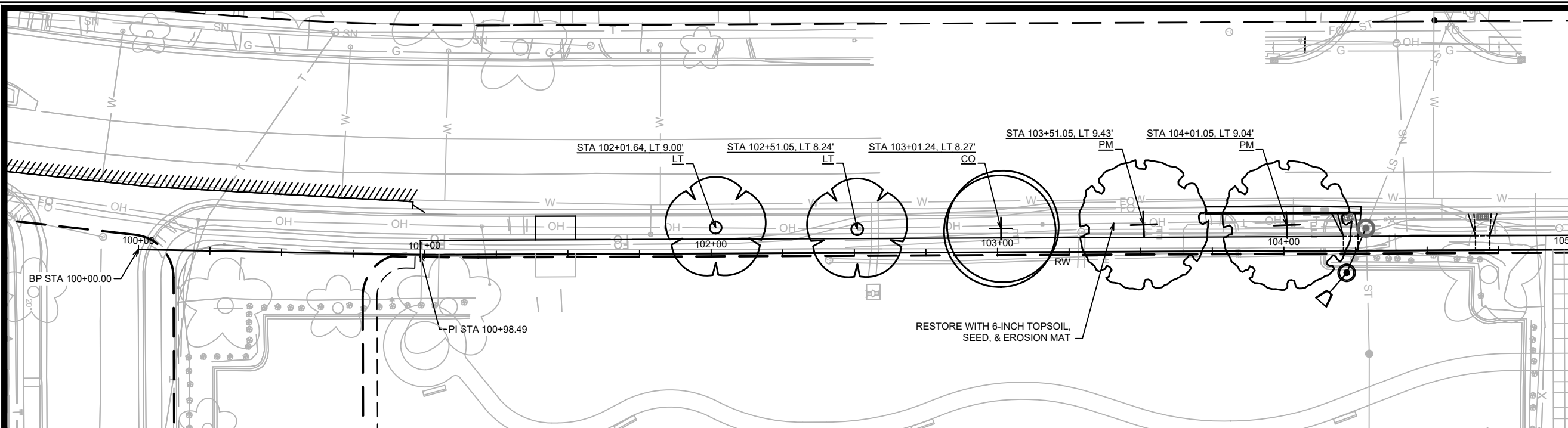
MARK	REVISION	DATE	BY
	SIDEWALK UPDATE	05/13/22	AJZ
Designed By:	GMA	Date:	5/11/2022 10:54 AM
12948		Scale:	1" = 40'

12948
 MADISON, WI
 CONTRACT NO: 8894

ELECTRICAL PLANS
 SSM FISH HATCHERY RIAD CLINIC & CSM
 M:\DESIGN\Projects\12948\CAD\Traffic\12948TE-Electrical.dwg



12948
 E-2



MATCH LINE 105+00.00

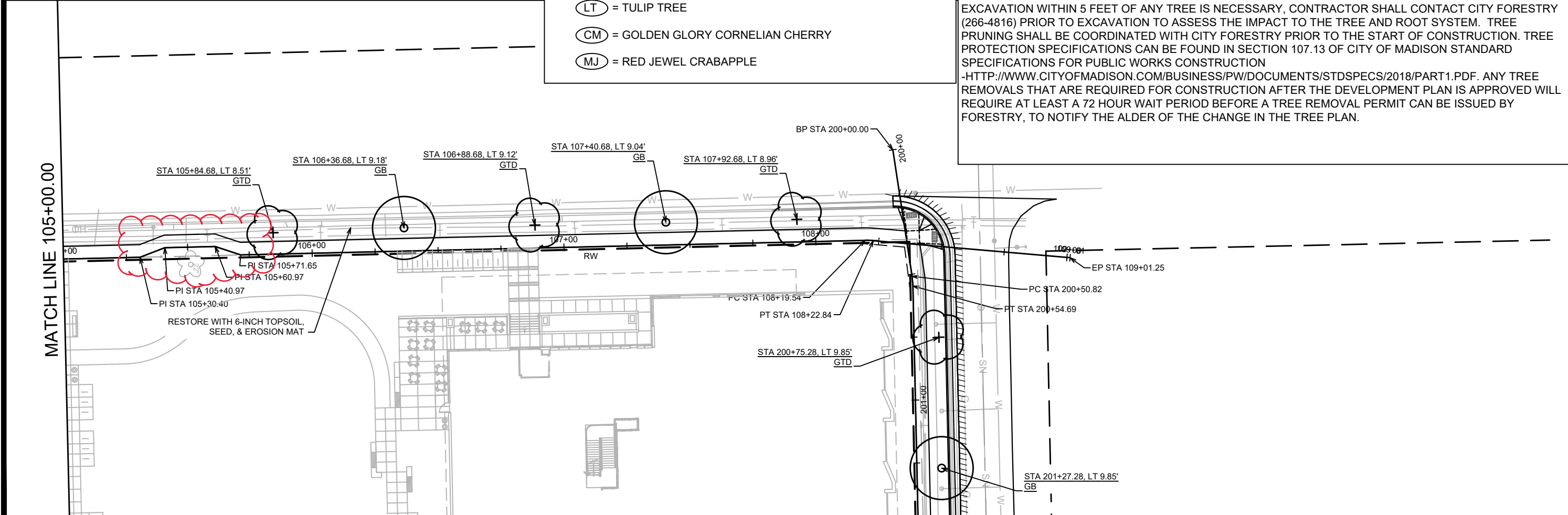
TREE KEY:

- (GB) = AUTUMN GOLD GINKGO
- (GTD) = STREET KEEPER HONEY LOCUST
- (PM) = EXCLAMATION LONDON PLANE TREE
- (CO) = COMMON HACKBERRY
- (LT) = TULIP TREE
- (CM) = GOLDEN GLORY CORNELIAN CHERRY
- (MJ) = RED JEWEL CRABAPPLE

NOTES:

- CONTRACTOR SHALL CONTACT CITY FORESTRY AT (608) 266-4816 TO SCHEDULE INSPECTION AND APPROVAL OF NURSERY TREE STOCK AND REVIEW PLANTING SPECIFICATIONS WITH THE LANDSCAPER AT LEAST ONE WEEK PRIOR TO STREET TREE PLANTING.

- EXISTING STREET TREES SHALL BE PROTECTED. PLEASE INCLUDE THE FOLLOWING NOTE ON THE SITE PLAN: CONTRACTOR SHALL INSTALL TREE PROTECTION FENCING IN THE AREA BETWEEN THE CURB AND SIDEWALK AND EXTEND IT AT LEAST 5 FEET FROM BOTH SIDES OF THE TREE ALONG THE LENGTH OF THE TERRACE. NO EXCAVATION IS PERMITTED WITHIN 5 FEET OF THE OUTSIDE EDGE OF A TREE TRUNK. IF EXCAVATION WITHIN 5 FEET OF ANY TREE IS NECESSARY, CONTRACTOR SHALL CONTACT CITY FORESTRY (266-4816) PRIOR TO EXCAVATION TO ASSESS THE IMPACT TO THE TREE AND ROOT SYSTEM. TREE PRUNING SHALL BE COORDINATED WITH CITY FORESTRY PRIOR TO THE START OF CONSTRUCTION. TREE PROTECTION SPECIFICATIONS CAN BE FOUND IN SECTION 107.13 OF CITY OF MADISON STANDARD SPECIFICATIONS FOR PUBLIC WORKS CONSTRUCTION -[HTTP://WWW.CITYOFMADISON.COM/BUSINESS/PW/DOCUMENTS/STDSPECS/2018/PART1.PDF](http://www.cityofmadison.com/business/pw/documents/stdspecs/2018/part1.pdf). ANY TREE REMOVALS THAT ARE REQUIRED FOR CONSTRUCTION AFTER THE DEVELOPMENT PLAN IS APPROVED WILL REQUIRE AT LEAST A 72 HOUR WAIT PERIOD BEFORE A TREE REMOVAL PERMIT CAN BE ISSUED BY FORESTRY, TO NOTIFY THE ALDER OF THE CHANGE IN THE TREE PLAN.



MATCH LINE 105+00.00

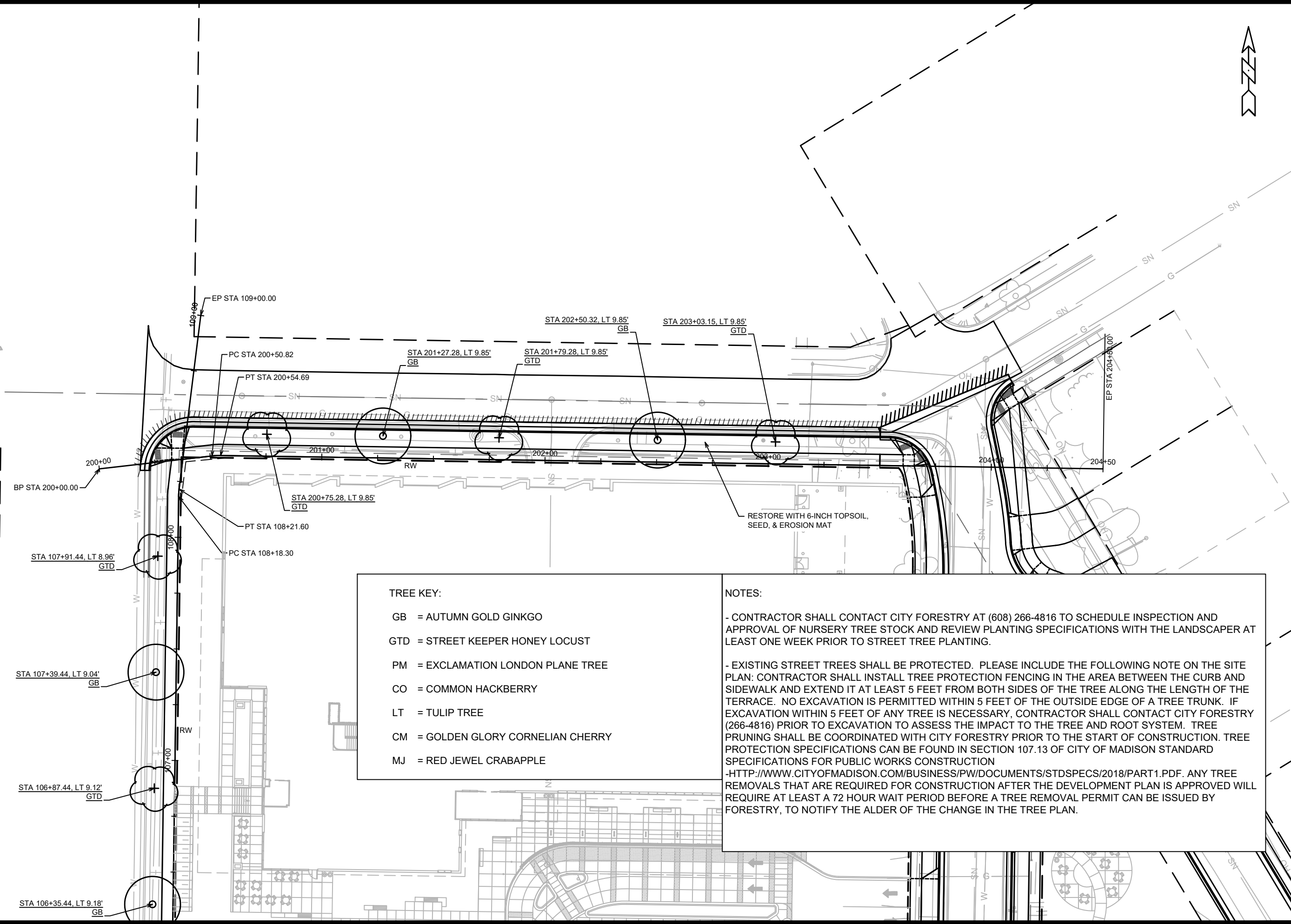
REV	DATE	BY
05/13/22	AJZ	
SIDEWALK UPDATES		
REVISION	DATE	SCALE
12948	5/11/2022 11:02 AM	1" = 40'

12948
 MADISON, WI
 CONTRACT NO.: 8894

FISH HATCHERY ROAD LANDSCAPE PLAN
 SSM FISH HATCHERY RIAD CLINIC & CSM
 M:\DESIGN\Projects\12948\CAD\Plan_Sheets\12948EN-LandscapePlan.dwg



12948
 L-1



TREE KEY:

- GB = AUTUMN GOLD GINKGO
- GTD = STREET KEEPER HONEY LOCUST
- PM = EXCLAMATION LONDON PLANE TREE
- CO = COMMON HACKBERRY
- LT = TULIP TREE
- CM = GOLDEN GLORY CORNELIAN CHERRY
- MJ = RED JEWEL CRABAPPLE

NOTES:

- CONTRACTOR SHALL CONTACT CITY FORESTRY AT (608) 266-4816 TO SCHEDULE INSPECTION AND APPROVAL OF NURSERY TREE STOCK AND REVIEW PLANTING SPECIFICATIONS WITH THE LANDSCAPER AT LEAST ONE WEEK PRIOR TO STREET TREE PLANTING.
- EXISTING STREET TREES SHALL BE PROTECTED. PLEASE INCLUDE THE FOLLOWING NOTE ON THE SITE PLAN: CONTRACTOR SHALL INSTALL TREE PROTECTION FENCING IN THE AREA BETWEEN THE CURB AND SIDEWALK AND EXTEND IT AT LEAST 5 FEET FROM BOTH SIDES OF THE TREE ALONG THE LENGTH OF THE TERRACE. NO EXCAVATION IS PERMITTED WITHIN 5 FEET OF THE OUTSIDE EDGE OF A TREE TRUNK. IF EXCAVATION WITHIN 5 FEET OF ANY TREE IS NECESSARY, CONTRACTOR SHALL CONTACT CITY FORESTRY (266-4816) PRIOR TO EXCAVATION TO ASSESS THE IMPACT TO THE TREE AND ROOT SYSTEM. TREE PRUNING SHALL BE COORDINATED WITH CITY FORESTRY PRIOR TO THE START OF CONSTRUCTION. TREE PROTECTION SPECIFICATIONS CAN BE FOUND IN SECTION 107.13 OF CITY OF MADISON STANDARD SPECIFICATIONS FOR PUBLIC WORKS CONSTRUCTION
- [HTTP://WWW.CITYOFMADISON.COM/BUSINESS/PW/DOCUMENTS/STDSPECS/2018/PART1.PDF](http://www.cityofmadison.com/business/pw/documents/stdspecs/2018/part1.pdf). ANY TREE REMOVALS THAT ARE REQUIRED FOR CONSTRUCTION AFTER THE DEVELOPMENT PLAN IS APPROVED WILL REQUIRE AT LEAST A 72 HOUR WAIT PERIOD BEFORE A TREE REMOVAL PERMIT CAN BE ISSUED BY FORESTRY, TO NOTIFY THE ALDER OF THE CHANGE IN THE TREE PLAN.

MARK	REVISION	DATE	BY

12948
MADISON, WI
8894
CONTRACT NO:

MIDLAND STREET LANDSCAPE PLAN
SSM FISH HATCHERY RIAD CLINIC & CSM
M:\DESIGN\Projects\12948\CAD\Plan Sheets\12948EN-LandscapePlan.dwg

12948
L-2