



Madison, Wisconsin

CITY OF MADISON

CITY ENGINEERING DIVISION

DEPARTMENT OF PUBLIC WORKS

PLAN OF PROPOSED IMPROVEMENT

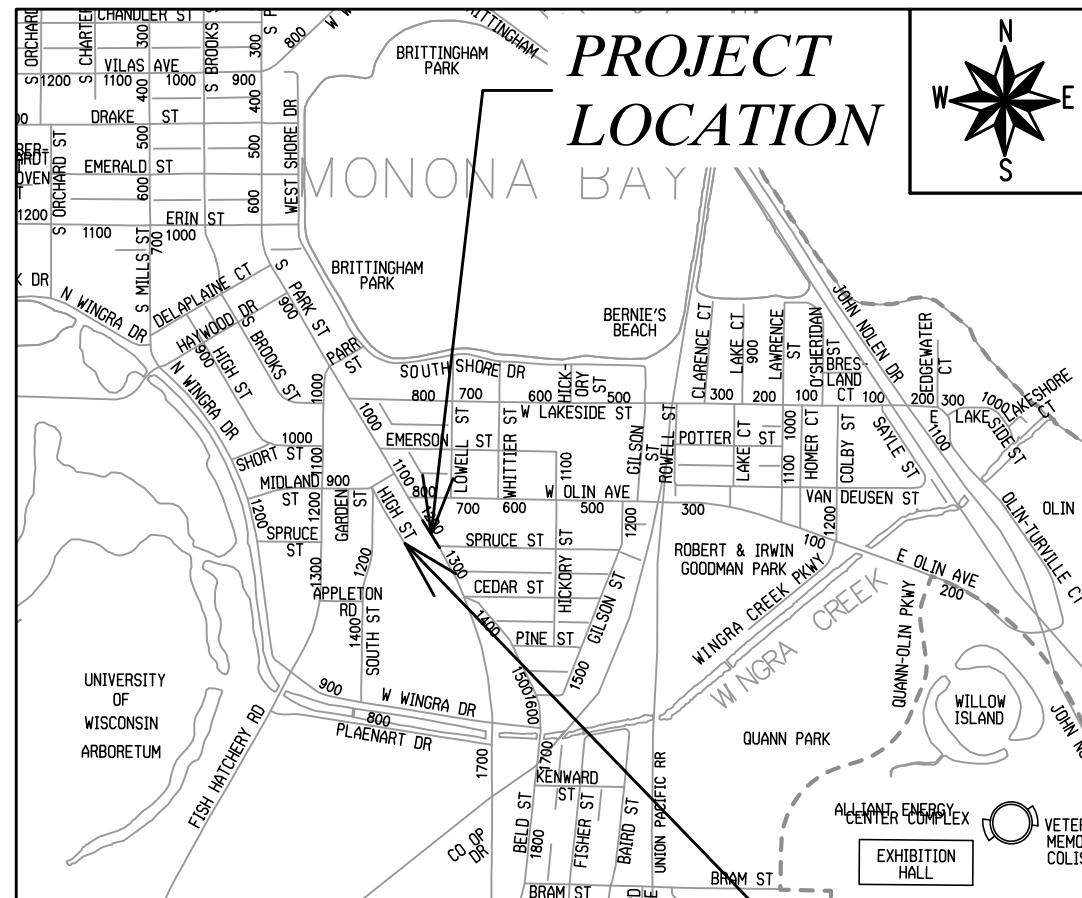
INDEX OF SHEETS

SHEET NO.	TITLE
1	GENERAL NOTES
D1	TYPICAL SECTION
D2	SIDEWALK PLAN
PL1	SANITARY & WATER PLAN
U1	LANDSCAPE PLAN
L1	CITY MAINTENANCE PLAN NOT REQUIRED

1222 S PARK ST

UTILITY AND TERRACE RESTORATION PLANS

CITY PROJECT NO. 13415
CONTRACT NO. 9010



CEDAR STREET, SOUTH STREET, HIGH STREET, WEST WINGRA DRIVE PLANS (SEE PROJECT NO. 11866 & 12956, CONTRACT NO. 8504 & 8559)

PUBLIC IMPROVEMENT PROJECT APPROVED

APPROVED DATE: February 23, 2021

BY THE COMMON COUNCIL OF MADISON, WISCONSIN

PUBLIC IMPROVEMENT DESIGN APPROVED BY:

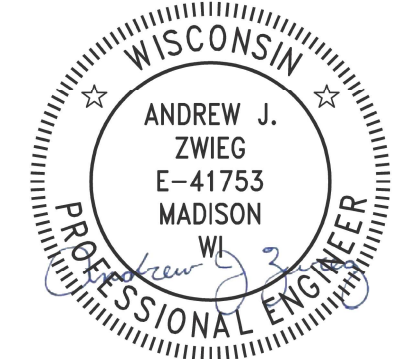
Greg Frise

May 10, 2021

City Engineer

Date

STREET DESIGNED BY:



May 10, 2021

CONVENTIONAL SIGNS

FIELD VERIFY ALL UTILITY LOCATIONS

GAS	— G —
STORM SEWER	— ST —
SANITARY SEWER	— SN —
WATER	— W —
BURIED ELECTRIC	— E —
OVERHEAD ELECTRIC	— OH —
POWER POLE	
ADA COMPLIANT RAMP W/ DETECTABLE WARNING FIELD	
COMBUSTIBLE FLUIDS	

NOTES:

ALL GUTTERS SHALL DRAIN WITH A MINIMUM GRADE OF 0.50% TOWARD STORM SEWER INLETS.

SIDEWALK RAMPS SHALL HAVE A MAXIMUM SLOPE OF 1" PER 12". SIDEWALK AND CURB RAMPS SHALL BE CONSTRUCTED WITH A SIDE SLOPE OF 2.00%. SIDEWALK SHALL HAVE A MINIMUM LONGITUDINAL SLOPE OF 0.50% AND A MAXIMUM LONGITUDINAL SLOPE OF 5.00% EXCEPT WHERE STREET GRADES EXCEED 5.00%.

THE LOCATION AND INFORMATION FOR PROPOSED NEW TREES, IN THE PUBLIC RIGHT OF WAY OR ON PUBLIC LANDS ARE APPROXIMATE AND ARE SHOWN FOR REFERENCE ONLY. THE LOCATIONS, SPECIFICATIONS AND PLANTING METHODS OF ALL PROPOSED NEW OR REPLACEMENT TREES IN THE PUBLIC RIGHT OF WAY OR ON PUBLIC LANDS SHALL BE APPROVED BY THE CITY FORESTER PRIOR TO INSTALLATION.

NO TREES IN THE RIGHT OF WAY OR ON PUBLIC LANDS SHALL BE TRIMMED, PRUNED, REMOVED OR ADVERSELY AFFECTED IN ANY WAY UNTIL THE DEVELOPER HAS RECEIVED WRITTEN PERMISSION FROM THE CITY ENGINEER OR CITY FORESTER. SAID WRITTEN PERMISSION SHALL INCLUDE LANGUAGE INDICATING THAT SECTION 10.101 OF THE MADISON GENERAL ORDINANCES AND ADMINISTRATIVE PROCEDURE MEMORANDUM NO. 6-2, REFERING TO NOTIFICATION OF PROPERTY OCCUPANTS AND/OR OWNERS, HAS BEEN COMPLIED WITH.

DEVELOPER MUST SUBMIT A TRAFFIC CONTROL PLAN TO CITY TRAFFIC ENGINEERING AT LEAST 14 DAYS PRIOR TO THE START OF WORK. WORK SHALL NOT PROCEED UNTIL AN APPROVED TRAFFIC CONTROL PLAN IS IN PLACE.

ALL PAVEMENT IN THE SOUTH PARK STREET RIGHT-OF-WAY SHALL BE TYPE C PAVEMENT PER STANDARD DETAIL DRAWING 4.02.
2.00" HMA PAVEMENT - TYPE 4 MT 58-28 S (UPPER LAYER)
3.50" HMA PAVEMENT - TYPE 3 MT 58-28 S (LOWER LAYER)

UNDERDRAINS SHALL BE INSTALLED PER STANDARD DETAIL DRAWING 4.05 FOR 75' ON EACH SIDE OF THE LOW POINT, OR TO THE NEAREST CURB HIGH POINT. ALL UNDERDRAIN SHALL BE WRAPPED.

ALL GUTTERS SHALL DRAIN WITH A MINIMUM GRADE OF 0.5% TOWARD STORM SEWER INLETS.

ALL DITCHES SHALL DRAIN WITH A MINIMUM GRADE OF 0.5%

THE CROSS SLOPE OF SIDEWALKS AND BARRIER FREE SIDEWALK CURB RAMPS SHALL TYPICALLY BE 1.5%. THE LONGITUDINAL GRADE OF BARRIER FREE SIDEWALK CURB RAMPS SHALL NOT EXCEED 8.33%. ALL SIDEWALK RAMPS SHALL BE CONSTRUCTED ACCORDING TO S.D.D. 3.04. AT ALL OTHER LOCATIONS THE LONGITUDINAL GRADE OF SIDEWALKS SHALL NOT EXCEED 5.0 % OR THE ADJACENT STREET GRADE WHICHEVER IS GREATER NOR BE LESS THAN 0.5% AND SHALL DRAIN TOWARD STORM SEWER INLETS. SIDE SLOPES WITHIN TEN FEET OF A PUBLIC SIDEWALK SHALL NOT EXCEED 4:1. ALL SIDEWALK AND SIDEWALK RAMP ELEVATIONS AND GRADES SHALL BE FIELD VERIFIED AND SET TO COMPLY WITH THE CITY OF MADISON STANDARD SPECIFICATIONS AND THE A.D.A. GUIDELINES.

OBTAIN A PRINT OUT OF THE ALIGNMENTS FROM THE CITY PROJECT ENGINEER PRIOR TO STAKING THIS PROJECT.

CURB STATION AND OFFSETS SHALL BE TO THE **EDGE OF PAVEMENT** UNLESS OTHERWISE INDICATED. CURB ELEVATIONS SHALL BE TO THE **EDGE OF PAVEMENT** UNLESS OTHERWISE INDICATED.

POWER POLES AND OTHER OBSTRUCTIONS SHALL BE MOVED TO PROVIDE 2 FEET MINIMUM OF CLEAR DISTANCE FROM ANY FACE OF CURB OR EDGE OF SIDEWALK.

ANY INFORMATION SHOWN ON THIS PLAN, WHICH IS NOT PART OF THIS RIGHT-OF-WAY PROJECT, IS PRELIMINARY AND NOT FOR CONSTRUCTION.

THERE MAY BE EXISTING UTILITIES OR OTHER FEATURES WHICH ARE EITHER NOT SHOWN OR SHOWN INCORRECTLY ON THIS PLAN. IT IS THE RESPONSIBILITY OF THE DEVELOPER TO LOCATE AND IDENTIFY ALL UTILITIES AND TOPOGRAPHY WHICH MAY AFFECT THE CONSTRUCTION OF THESE IMPROVEMENTS.

ALL PERMANENT SIGNING AND POSTING WILL BE DETERMINED AND PROVIDED BY THE TRAFFIC ENGINEERING DIVISION, FOLLOWING CONSTRUCTION OF THESE IMPROVEMENTS.

THE DEVELOPER SHALL PROVIDE, INSTALL AND MAINTAIN ALL STREET END BARRICADES, SIGNING AND TRAFFIC CONTROL, AS REQUIRED BY THE CITY TRAFFIC ENGINEER.

PAVEMENT SAWCUTS SHALL BE AS DIRECTED BY THE CITY CONSTRUCTION ENGINEER. SAWCUTS SHOWN ON THE PLAN ARE APPROXIMATE.

ALL WORK IN THE RIGHT OF WAY AND PUBLIC EASEMENTS SHALL BE IN ACCORDANCE WITH THE CITY OF MADISON STANDARD SPECIFICATIONS FOR PUBLIC WORKS CONSTRUCTION



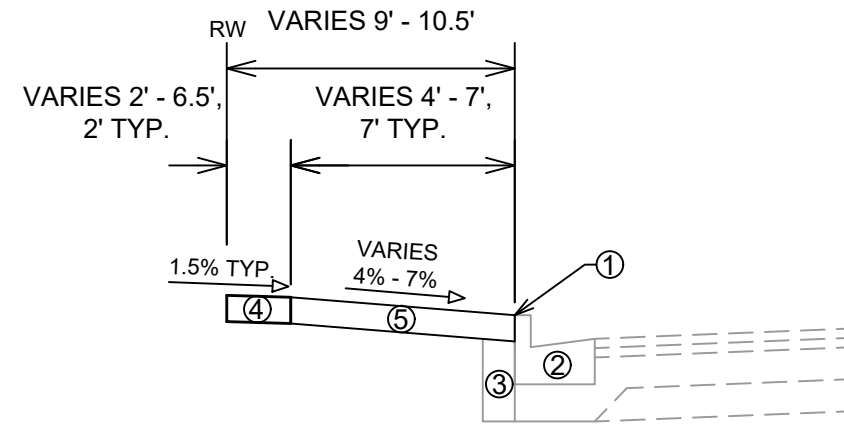
MARK	REVISION	DATE	BY

13415
MADISON, WI
9010
CONTRACT NO:

GENERAL NOTES
1222 S PARK ST
M:\DESIGN\Projects\12697\CAD\Streets\12697\EN\Notes.dwg



13415
D-1



TYPICAL SECTION
SOUTH PARK STREET SIDEWALK LEFT
STA 100+26.92 TO STA 102+15.34

SPECIAL NOTES:

- SEE PLAN SHEET FOR FACE OF WALK (FOW) ELEVATIONS
- TYPICAL SECTION NOT TO SCALE.
- EXISTING SOUTH PARK STREET PAVEMENT STRUCTURE IS ASPHALT OVER CONCRETE.

- ① POINT REFERRED TO ON PROFILE
- ② CONCRETE CURB AND GUTTER TYPE 'A', SEE PLAN SHEET FOR LOCATIONS, (SPOT REPLACE)
- ③ FILL INCIDENTAL TO CURB AND GUTTER INSTALLATION
- ④ CONCRETE SIDEWALK 5-INCH
- ⑤ RESTORE DISTURBED AREAS WITH 6-INCHES TOPSOIL, SEED, & EROSION MAT

MARK	REVISION	DATE	BY
13415	4/29/2021 9:30 AM	###	###
Designed By: ALZ		Scale: #####	

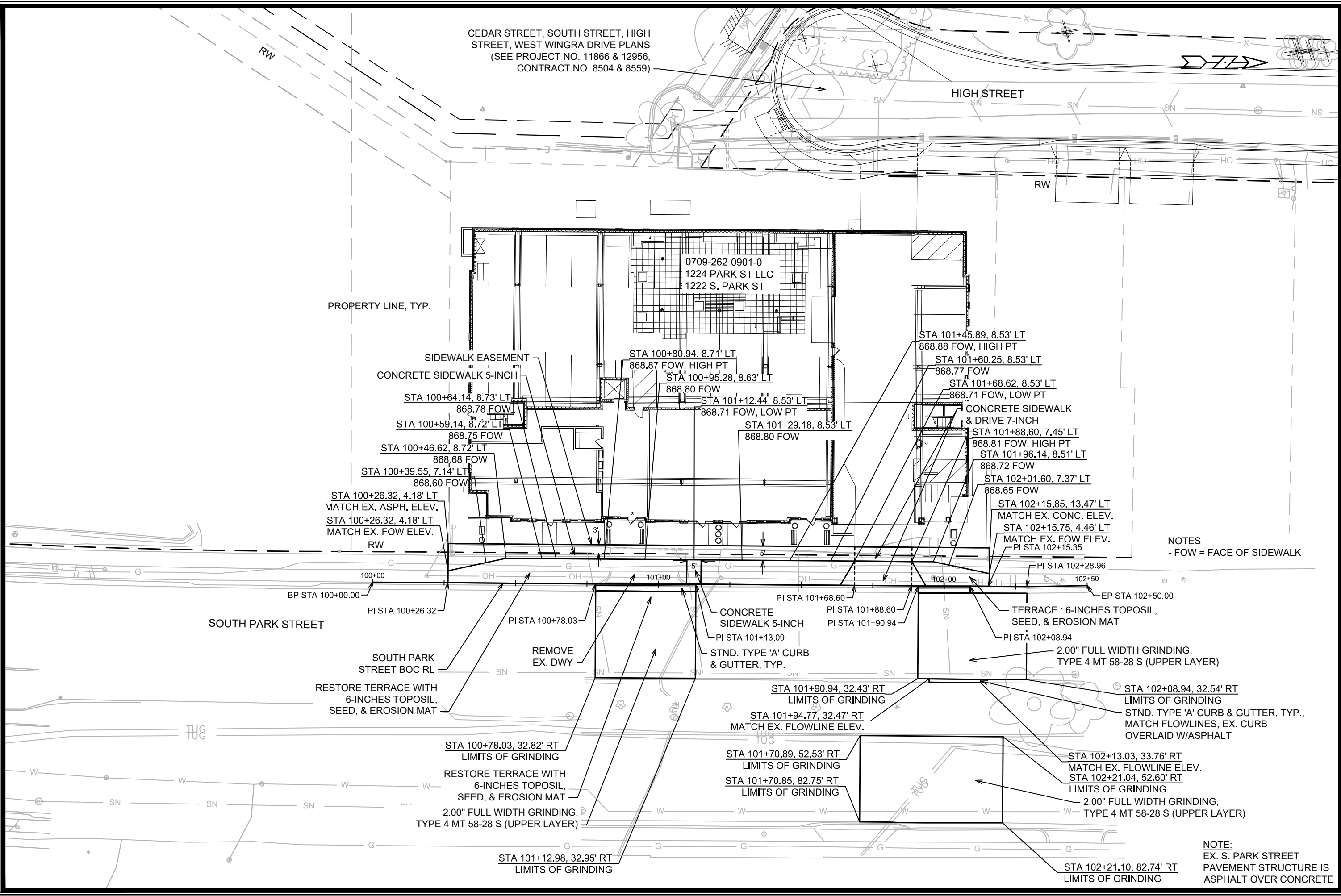
13415
MADISON, WI
9010
CONTRACT NO:

TYPICAL SECTION
1222 S PARK ST
M:\DESIGN\Projects\12697\CAD\Streets\12697EN-Typicals.dwg



13415
D-2

CEDAR STREET, SOUTH STREET, HIGH STREET, WEST WINGRA DRIVE PLANS
(SEE PROJECT NO. 11866 & 12956,
CONTRACT NO. 8504 & 8559)



PROPERTY LINE, TYP.

STA 100+26.32, 4.18' LT
MATCH EX. ASPH. ELEV.
STA 100+26.32, 4.18' LT
MATCH EX. FOW ELEV.
RW

SIDEWALK EASEMENT
CONCRETE SIDEWALK 5-INCH
STA 100+64.14, 8.73' LT
868.78 FOW
STA 100+59.14, 8.72' LT
868.75 FOW
STA 100+46.62, 8.72' LT
868.68 FOW
STA 100+39.55, 7.14' LT
868.60 FOW

0709-262-0901-0
1224 PARK ST LLC
1222 S. PARK ST
STA 100+80.94, 8.71' LT
868.87 FOW, HIGH PT
STA 100+95.28, 8.63' LT
868.80 FOW
STA 101+12.44, 8.53' LT
868.71 FOW, LOW PT
STA 101+29.18, 8.53' LT
868.80 FOW

STA 101+45.89, 8.53' LT
868.88 FOW, HIGH PT
STA 101+60.25, 8.53' LT
868.77 FOW
STA 101+68.62, 8.53' LT
868.71 FOW, LOW PT

CONCRETE SIDEWALK
& DRIVE 7-INCH
STA 101+88.60, 7.45' LT
868.81 FOW, HIGH PT
STA 101+96.14, 8.51' LT
868.72 FOW
STA 102+01.60, 7.37' LT
868.65 FOW

STA 102+15.85, 13.47' LT
MATCH EX. CONC. ELEV.
STA 102+15.75, 4.46' LT
MATCH EX. FOW ELEV.
PI STA 102+15.35

NOTES
- FOW = FACE OF SIDEWALK

SOUTH PARK STREET

SOUTH PARK STREET BOC RL
RESTORE TERRACE WITH
6-INCHES TOPO SIL,
SEED, & EROSION MAT

STA 100+78.03, 32.82' RT
LIMITS OF GRINDING
RESTORE TERRACE WITH
6-INCHES TOPO SIL,
SEED, & EROSION MAT
2.00" FULL WIDTH GRINDING,
TYPE 4 MT 58-28 S (UPPER LAYER)

STA 101+12.98, 32.95' RT
LIMITS OF GRINDING

REMOVE
EX. DWY

CONCRETE
SIDEWALK 5-INCH
PI STA 101+13.09
STND. TYPE 'A' CURB
& GUTTER, TYP.

STA 101+90.94, 32.43' RT
LIMITS OF GRINDING
STA 101+94.77, 32.47' RT
MATCH EX. FLOWLINE ELEV.

STA 101+70.89, 52.53' RT
LIMITS OF GRINDING
STA 101+70.85, 82.75' RT
LIMITS OF GRINDING

PI STA 101+68.60
PI STA 101+88.60
PI STA 101+90.94
TERRACE : 6-INCHES TOPO SIL,
SEED, & EROSION MAT
PI STA 102+08.94

2.00" FULL WIDTH GRINDING,
TYPE 4 MT 58-28 S (UPPER LAYER)

STA 102+08.94, 32.54' RT
LIMITS OF GRINDING
STND. TYPE 'A' CURB & GUTTER, TYP.,
MATCH FLOWLINES, EX. CURB
OVERLAID W/ASPHALT

STA 102+13.03, 33.76' RT
MATCH EX. FLOWLINE ELEV.
STA 102+21.04, 52.60' RT
LIMITS OF GRINDING
2.00" FULL WIDTH GRINDING,
TYPE 4 MT 58-28 S (UPPER LAYER)

STA 102+21.10, 82.74' RT
LIMITS OF GRINDING

NOTE:
EX. S. PARK STREET
PAVEMENT STRUCTURE IS
ASPHALT OVER CONCRETE

MARK	REVISION	DATE	BY
13415	4/29/2021 9:31 AM		PL-1

13415
MADISON, WI
CONTRACT NO: 9010

S. PARK ST SIDEWALK PLAN DETAIL
1222 S PARK ST
M:\DESIGN\Projects\12697\CAD\Streets\12697\EN-SParkPlan.dwg



13415
PL-1

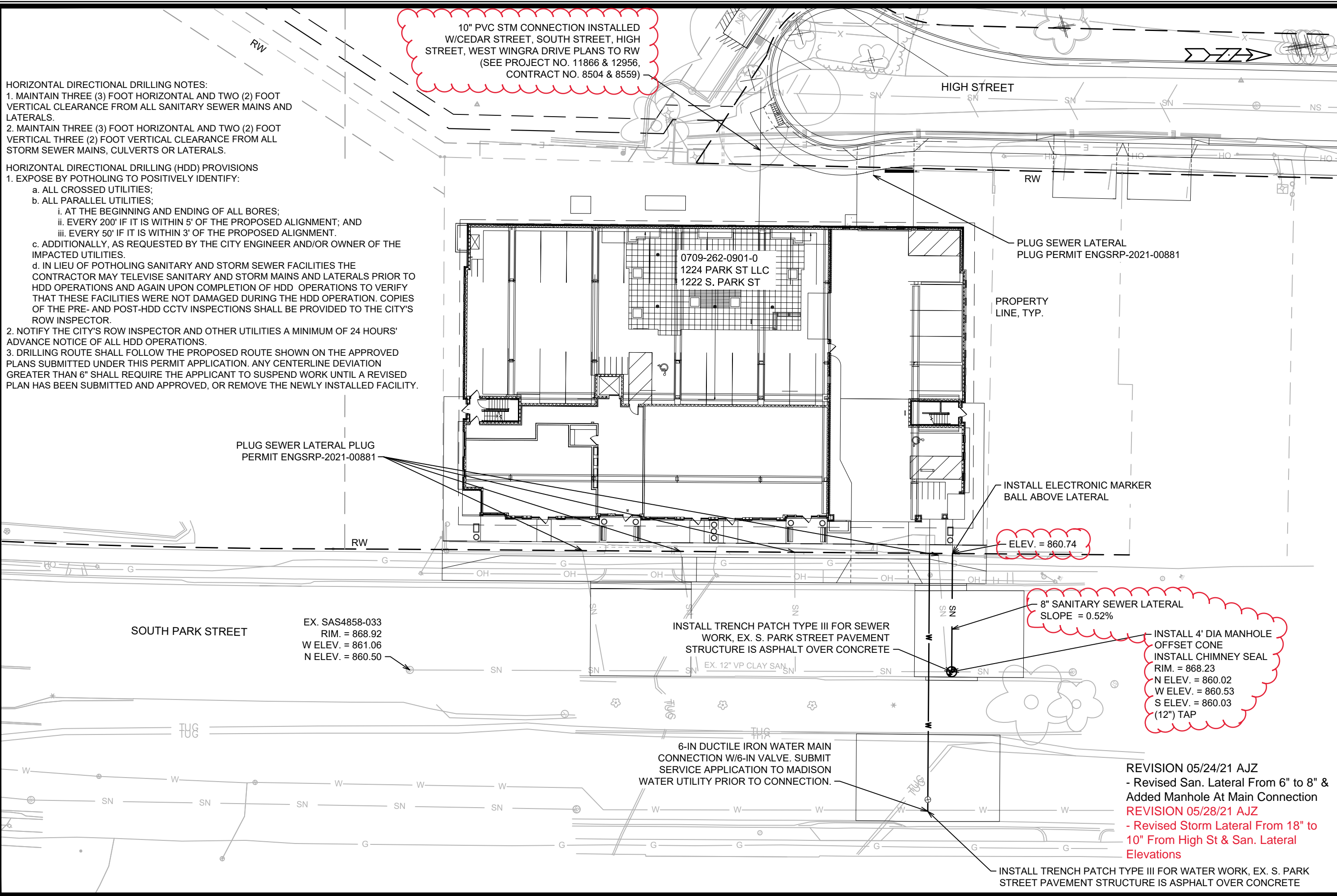
HORIZONTAL DIRECTIONAL DRILLING NOTES:

1. MAINTAIN THREE (3) FOOT HORIZONTAL AND TWO (2) FOOT VERTICAL CLEARANCE FROM ALL SANITARY SEWER MAINS AND LATERALS.
2. MAINTAIN THREE (3) FOOT HORIZONTAL AND TWO (2) FOOT VERTICAL CLEARANCE FROM ALL STORM SEWER MAINS, CULVERTS OR LATERALS.

HORIZONTAL DIRECTIONAL DRILLING (HDD) PROVISIONS

1. EXPOSE BY POTHOLING TO POSITIVELY IDENTIFY:
 - a. ALL CROSSED UTILITIES;
 - b. ALL PARALLEL UTILITIES;
 - i. AT THE BEGINNING AND ENDING OF ALL BORES;
 - ii. EVERY 200' IF IT IS WITHIN 5' OF THE PROPOSED ALIGNMENT; AND
 - iii. EVERY 50' IF IT IS WITHIN 3' OF THE PROPOSED ALIGNMENT.
 - c. ADDITIONALLY, AS REQUESTED BY THE CITY ENGINEER AND/OR OWNER OF THE IMPACTED UTILITIES.
 - d. IN LIEU OF POTHOLING SANITARY AND STORM SEWER FACILITIES THE CONTRACTOR MAY TELEWISE SANITARY AND STORM MAINS AND LATERALS PRIOR TO HDD OPERATIONS AND AGAIN UPON COMPLETION OF HDD OPERATIONS TO VERIFY THAT THESE FACILITIES WERE NOT DAMAGED DURING THE HDD OPERATION. COPIES OF THE PRE- AND POST-HDD CCTV INSPECTIONS SHALL BE PROVIDED TO THE CITY'S ROW INSPECTOR.
2. NOTIFY THE CITY'S ROW INSPECTOR AND OTHER UTILITIES A MINIMUM OF 24 HOURS' ADVANCE NOTICE OF ALL HDD OPERATIONS.
3. DRILLING ROUTE SHALL FOLLOW THE PROPOSED ROUTE SHOWN ON THE APPROVED PLANS SUBMITTED UNDER THIS PERMIT APPLICATION. ANY CENTERLINE DEVIATION GREATER THAN 6" SHALL REQUIRE THE APPLICANT TO SUSPEND WORK UNTIL A REVISED PLAN HAS BEEN SUBMITTED AND APPROVED, OR REMOVE THE NEWLY INSTALLED FACILITY.

10" PVC STM CONNECTION INSTALLED W/CEDAR STREET, SOUTH STREET, HIGH STREET, WEST WINGRA DRIVE PLANS TO RW (SEE PROJECT NO. 11866 & 12956, CONTRACT NO. 8504 & 8559)



PLUG SEWER LATERAL PLUG PERMIT ENGSRP-2021-00881

PLUG SEWER LATERAL PLUG PERMIT ENGSRP-2021-00881

PROPERTY LINE, TYP.

INSTALL ELECTRONIC MARKER BALL ABOVE LATERAL

ELEV. = 860.74

8" SANITARY SEWER LATERAL SLOPE = 0.52%

INSTALL 4' DIA MANHOLE OFFSET CONE
INSTALL CHIMNEY SEAL
RIM. = 868.23
N ELEV. = 860.02
W ELEV. = 860.53
S ELEV. = 860.03
(12") TAP

EX. SAS4858-033
RIM. = 868.92
W ELEV. = 861.06
N ELEV. = 860.50

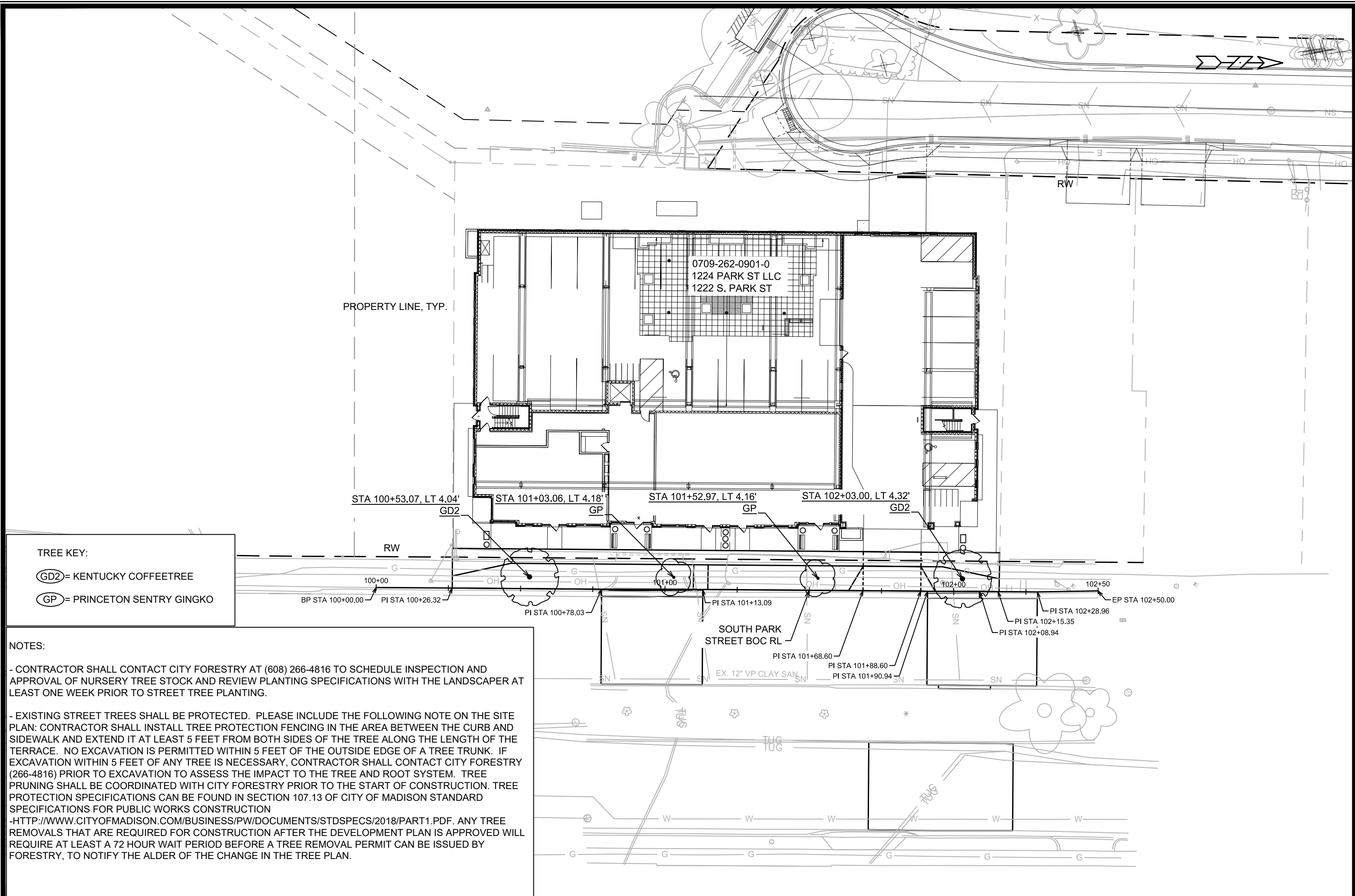
INSTALL TRENCH PATCH TYPE III FOR SEWER WORK, EX. S. PARK STREET PAVEMENT STRUCTURE IS ASPHALT OVER CONCRETE

6-IN DUCTILE IRON WATER MAIN CONNECTION W/6-IN VALVE. SUBMIT SERVICE APPLICATION TO MADISON WATER UTILITY PRIOR TO CONNECTION.

REVISION 05/24/21 AJZ
- Revised San. Lateral From 6" to 8" & Added Manhole At Main Connection
REVISION 05/28/21 AJZ
- Revised Storm Lateral From 18" to 10" From High St & San. Lateral Elevations

INSTALL TRENCH PATCH TYPE III FOR WATER WORK, EX. S. PARK STREET PAVEMENT STRUCTURE IS ASPHALT OVER CONCRETE

13415	MADISON, WI	9010	U-1
SANITARY LATERAL & WATER SERVICE CONNECTION PLAN		CONTRACT NO.:	
1222 S PARK ST		13415	
M:\DESIGN\Projects\12697\CAD\Streets\12697\EN-SParkUtilityPlan.dwg			
13415		U-1	



TREE KEY:
 (GD2) = KENTUCKY COFFEETREE
 (GP) = PRINCETON SENTRY GINGKO

NOTES:

- CONTRACTOR SHALL CONTACT CITY FORESTRY AT (608) 266-4816 TO SCHEDULE INSPECTION AND APPROVAL OF NURSERY TREE STOCK AND REVIEW PLANTING SPECIFICATIONS WITH THE LANDSCAPER AT LEAST ONE WEEK PRIOR TO STREET TREE PLANTING.
- EXISTING STREET TREES SHALL BE PROTECTED. PLEASE INCLUDE THE FOLLOWING NOTE ON THE SITE PLAN: CONTRACTOR SHALL INSTALL TREE PROTECTION FENCING IN THE AREA BETWEEN THE CURB AND SIDEWALK AND EXTEND IT AT LEAST 5 FEET FROM BOTH SIDES OF THE TREE ALONG THE LENGTH OF THE TERRACE. NO EXCAVATION IS PERMITTED WITHIN 5 FEET OF THE OUTSIDE EDGE OF A TREE TRUNK. IF EXCAVATION WITHIN 5 FEET OF ANY TREE IS NECESSARY, CONTRACTOR SHALL CONTACT CITY FORESTRY (266-4816) PRIOR TO EXCAVATION TO ASSESS THE IMPACT TO THE TREE AND ROOT SYSTEM. TREE PRUNING SHALL BE COORDINATED WITH CITY FORESTRY PRIOR TO THE START OF CONSTRUCTION. TREE PROTECTION SPECIFICATIONS CAN BE FOUND IN SECTION 107.13 OF CITY OF MADISON STANDARD SPECIFICATIONS FOR PUBLIC WORKS CONSTRUCTION
- [HTTP://WWW.CITYOFMADISON.COM/BUSINESS/PW/DOCUMENTS/STDSPECS/2018/PART1.PDF](http://www.cityofmadison.com/BUSINESS/PW/DOCUMENTS/STDSPECS/2018/PART1.PDF). ANY TREE REMOVALS THAT ARE REQUIRED FOR CONSTRUCTION AFTER THE DEVELOPMENT PLAN IS APPROVED WILL REQUIRE AT LEAST A 72 HOUR WAIT PERIOD BEFORE A TREE REMOVAL PERMIT CAN BE ISSUED BY FORESTRY, TO NOTIFY THE ALDER OF THE CHANGE IN THE TREE PLAN.

MARK	REVISION	DATE	BY
13415	Designed By: ALZ	Date: 4/29/2021 9:31 AM	
		Scale: 1" = 30'	L-1

13415
 MADISON, WI
 CONTRACT NO: 9010

S. PARK ST LANDSCAPING PLAN DETAIL
 1222 S PARK ST
 M:\DESIGN\Projects\12697\CAD\Streets\12697EN-SParkLandscapingPlan.dwg



13415
 L-1