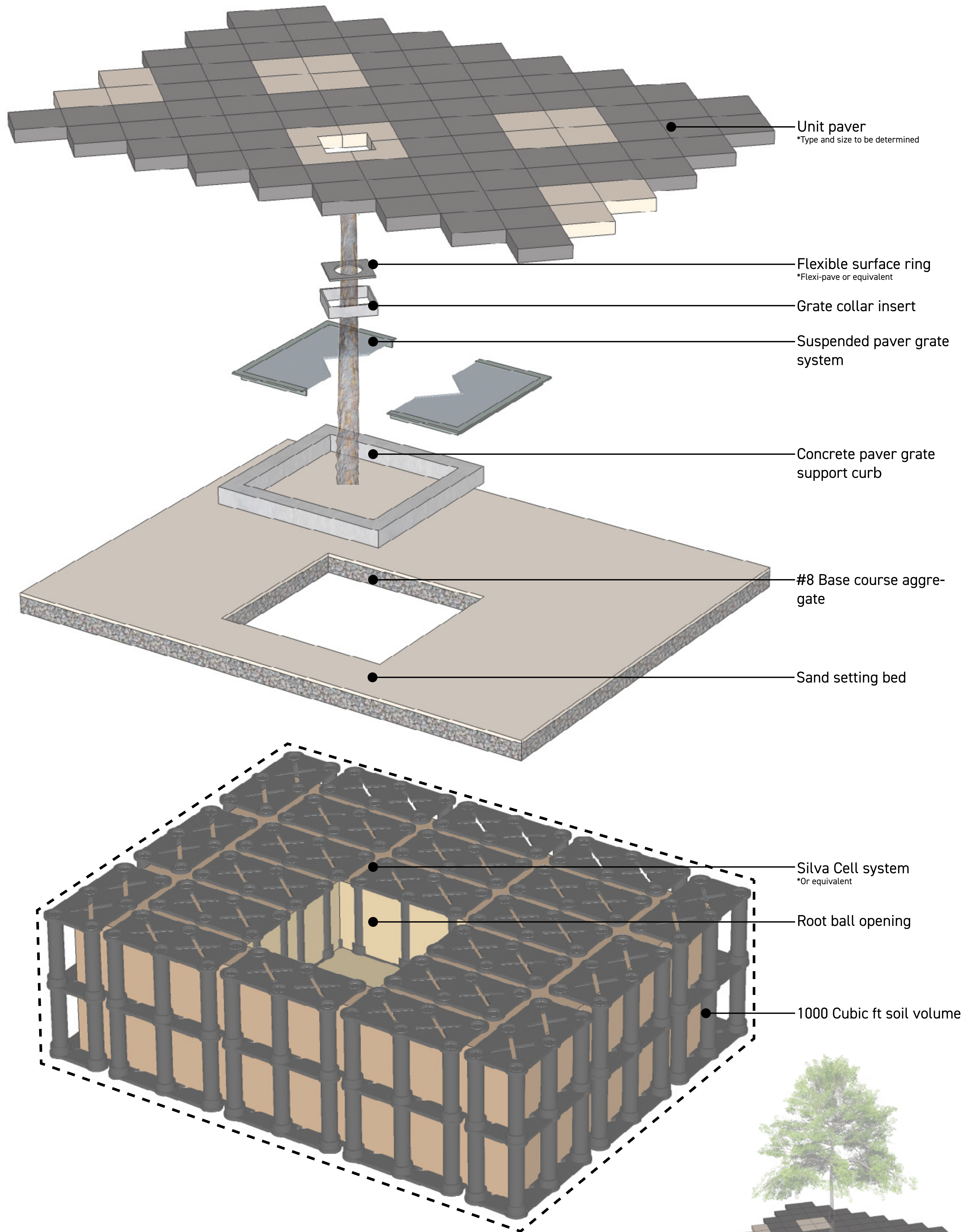
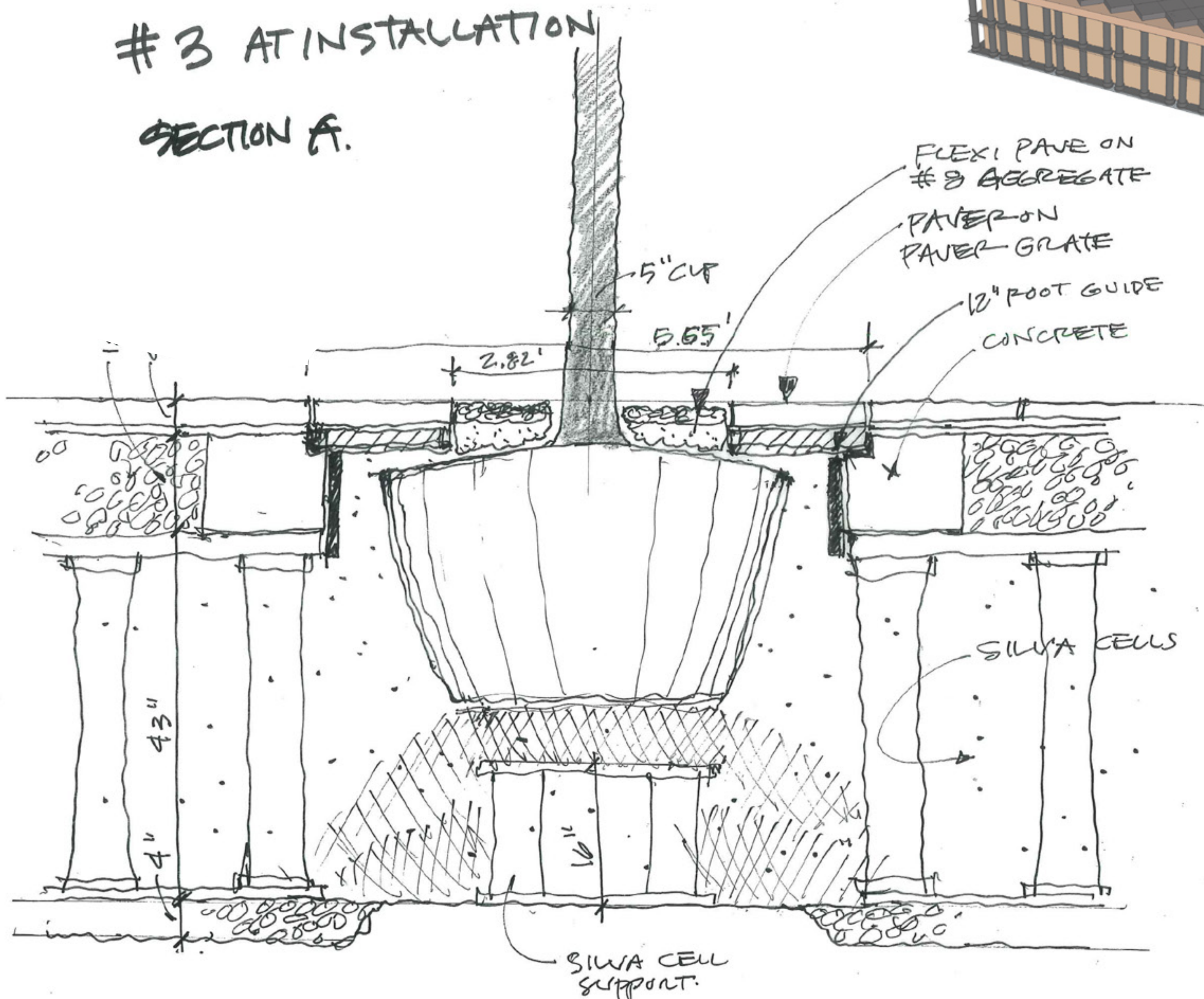


# Tree Planting Detail

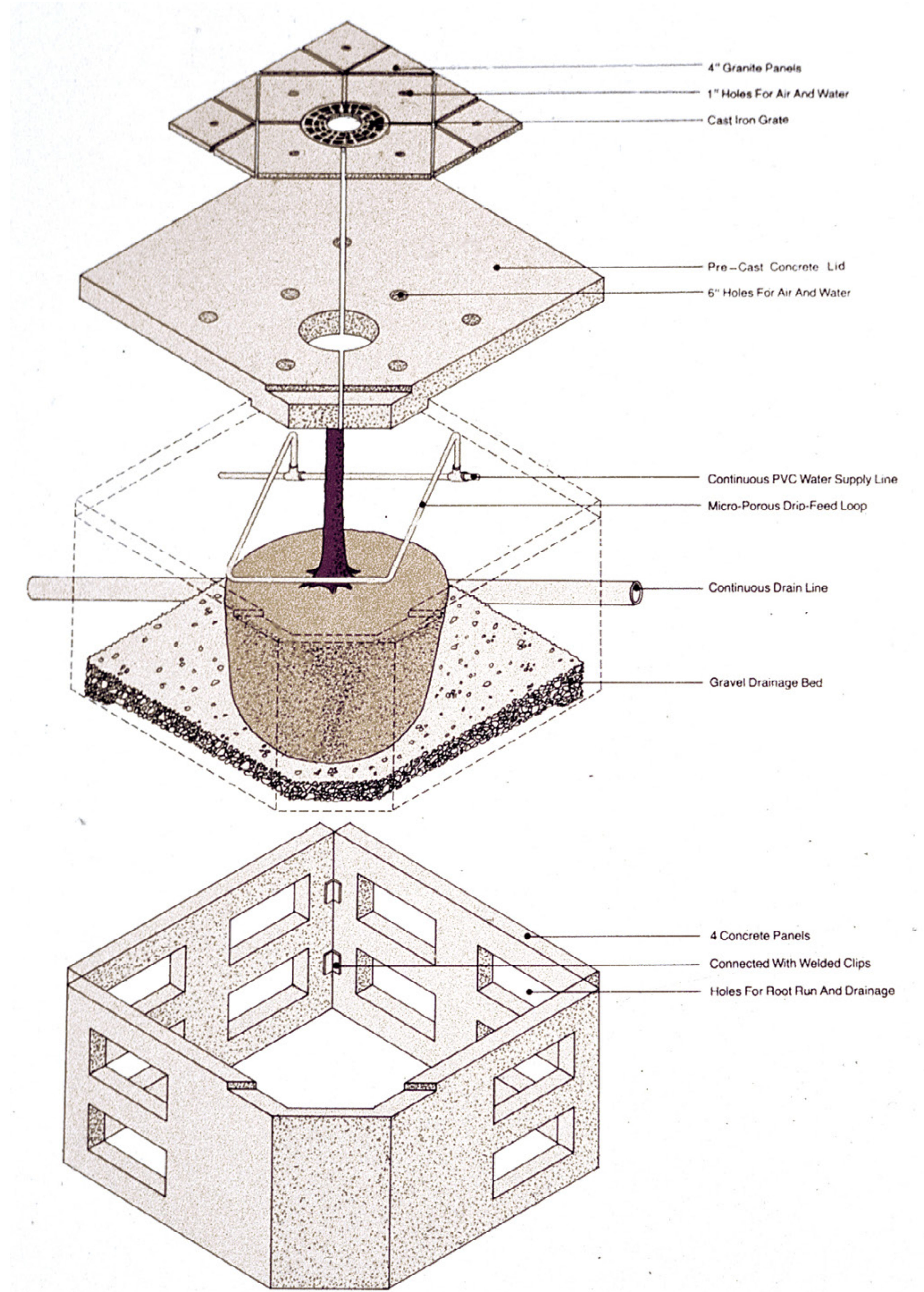
## Proposed Tree Well Detail



#3 AT INSTALLATION  
 SECTION A.



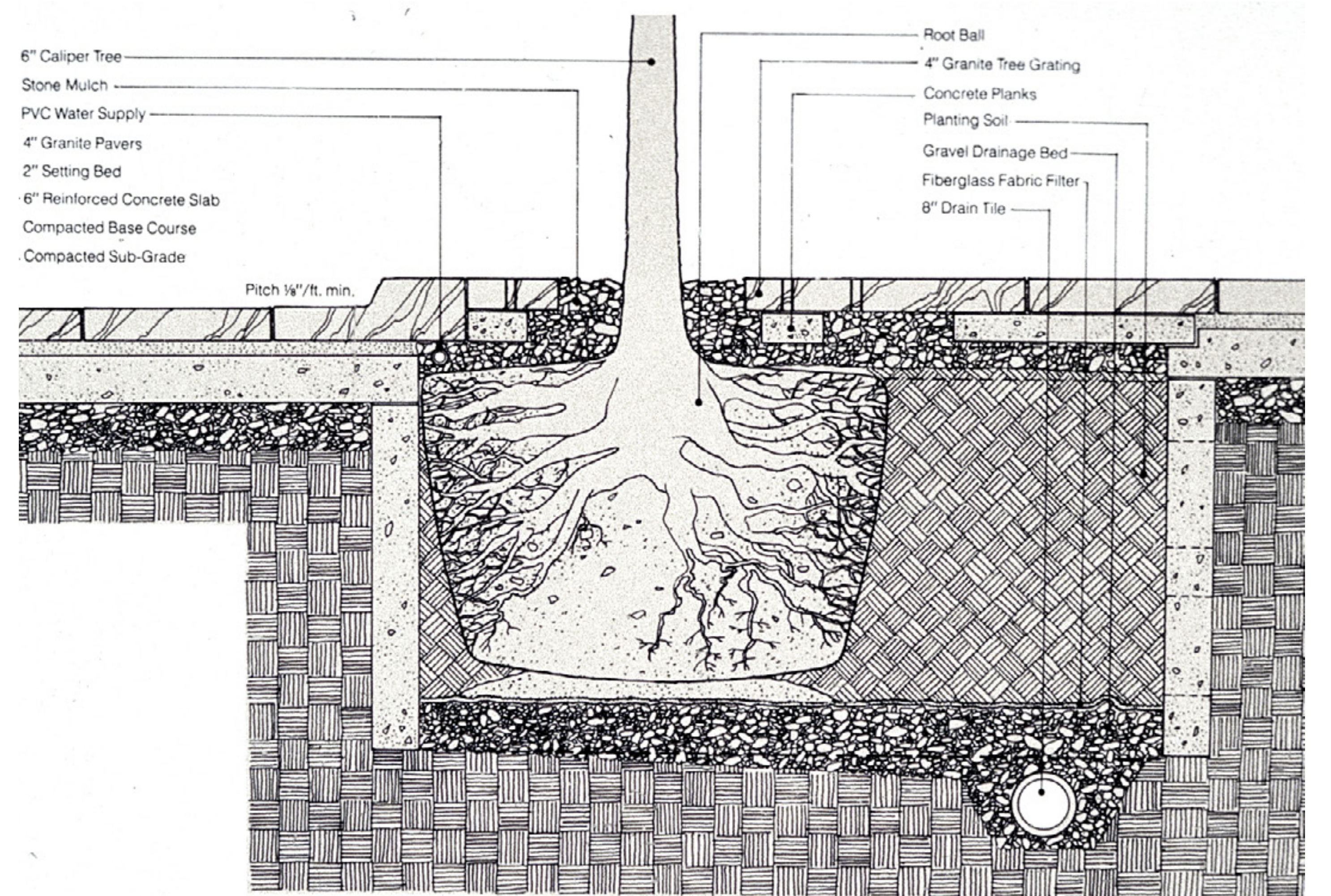
## Existing Tree Well Detail



Tree Pit Construction

### THE TRANSITWAY MALL Typical Details

Regional Transportation District, Denver, Colorado  
 I.M. Pei & Partners, Architects and Planners  
 Hanna/Olin, Environmental Design and Planning  
 July 1979



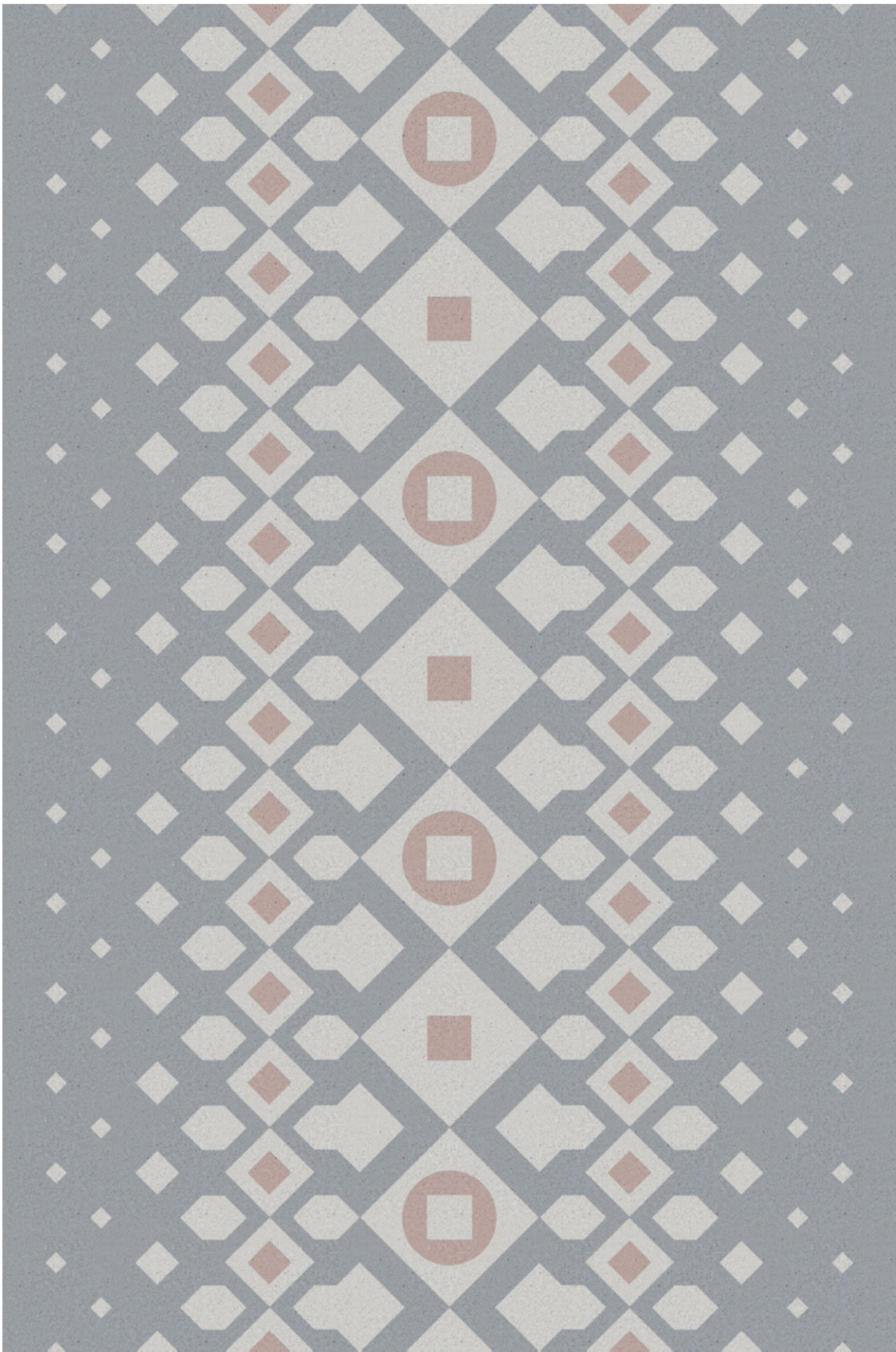
Typical Planting Pit 1"=1'0"



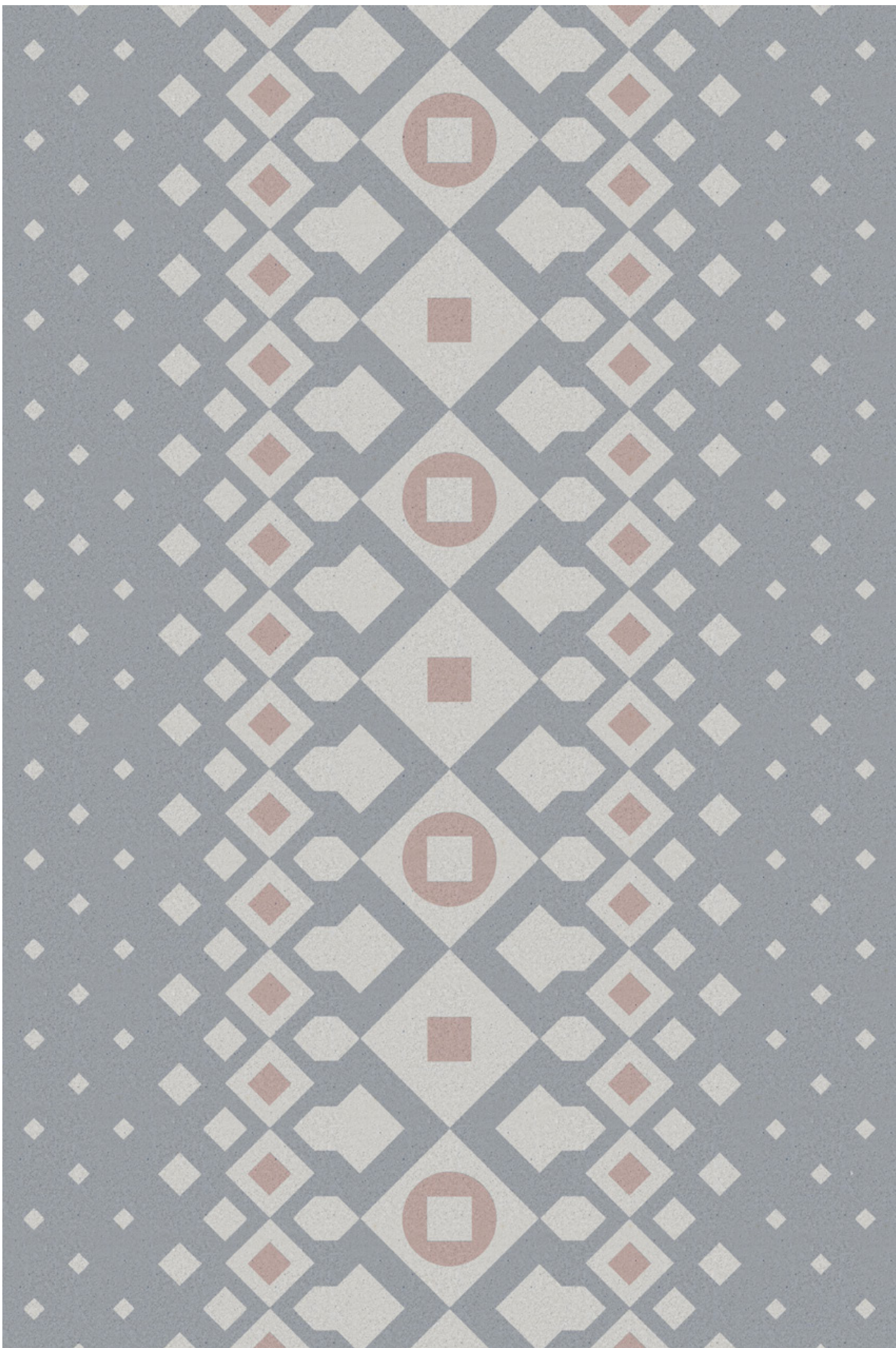
# Pattern & Geometry Studies

## Paving Pattern

Existing



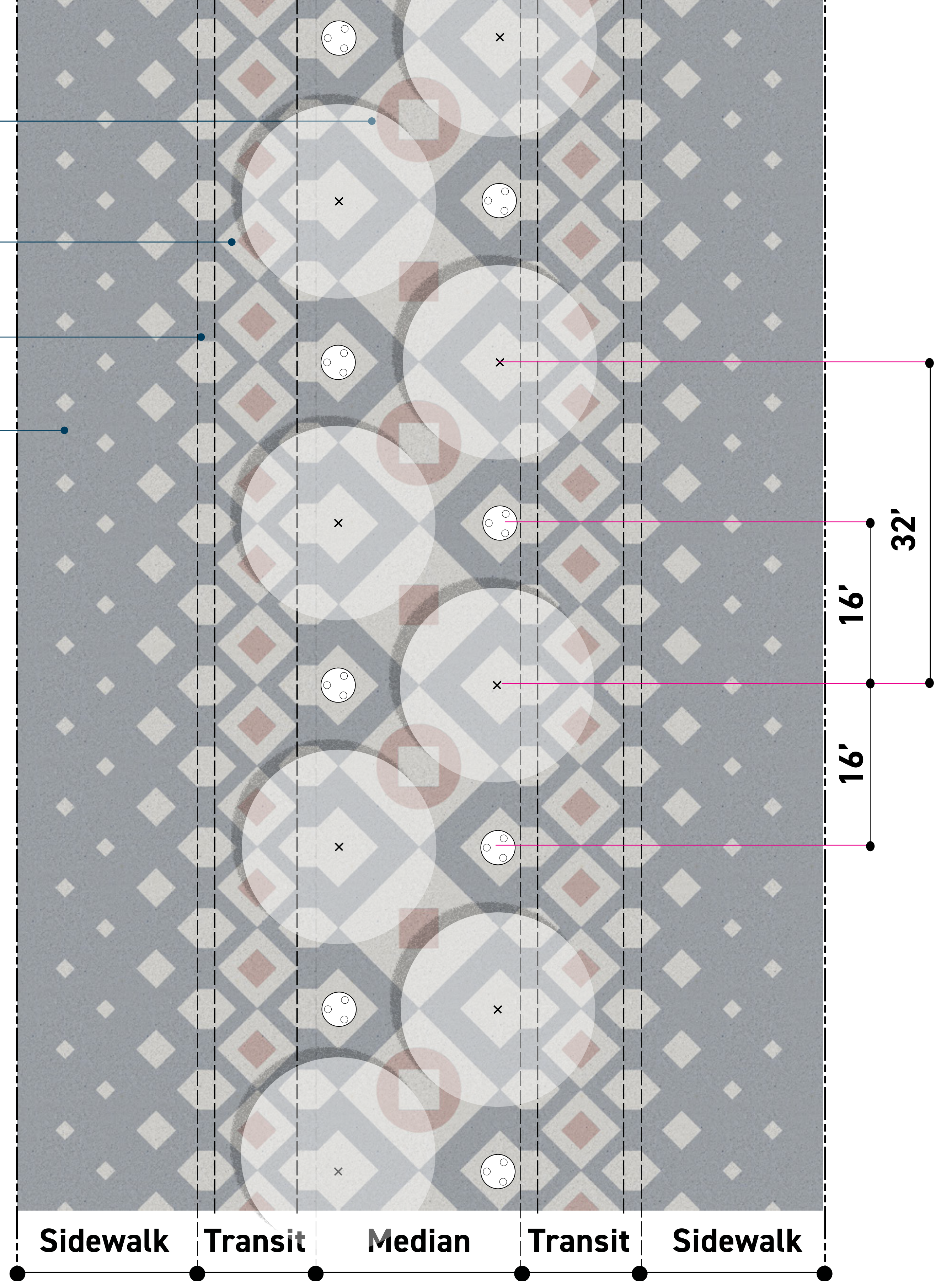
Proposed Center Running



## Pattern & Use

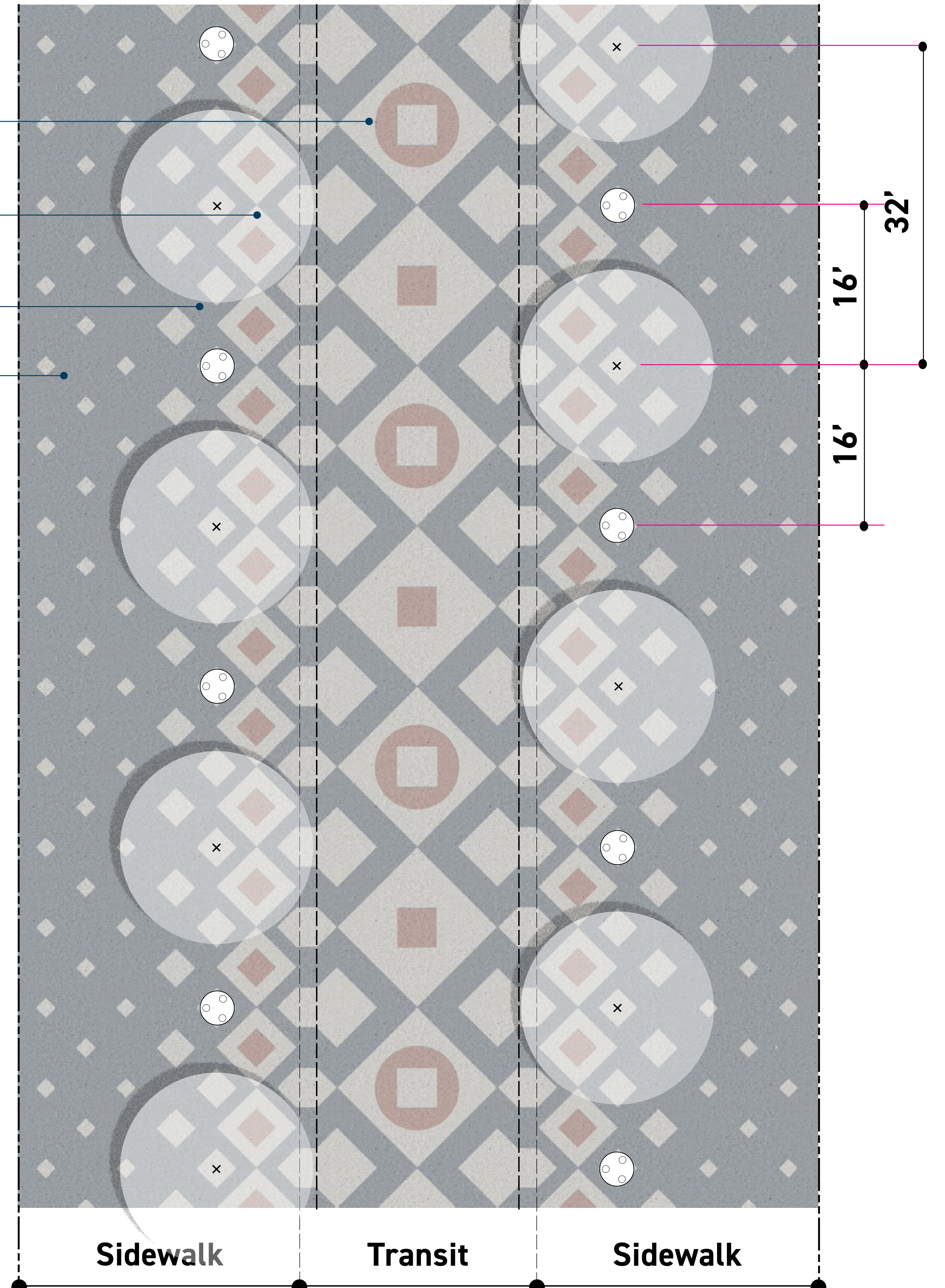
Existing

- Large diamonds and trees define pedestrian promenade
- Medium diamonds define the transit way
- 2' wide bands visually define transit way
- Pattern dissipates at edges



Proposed Center Running

- Large diamonds and trees define transit way
- Medium diamonds define the edge of the sidewalk
- Outside 2' wide bands removed
- Pattern dissipates at edges

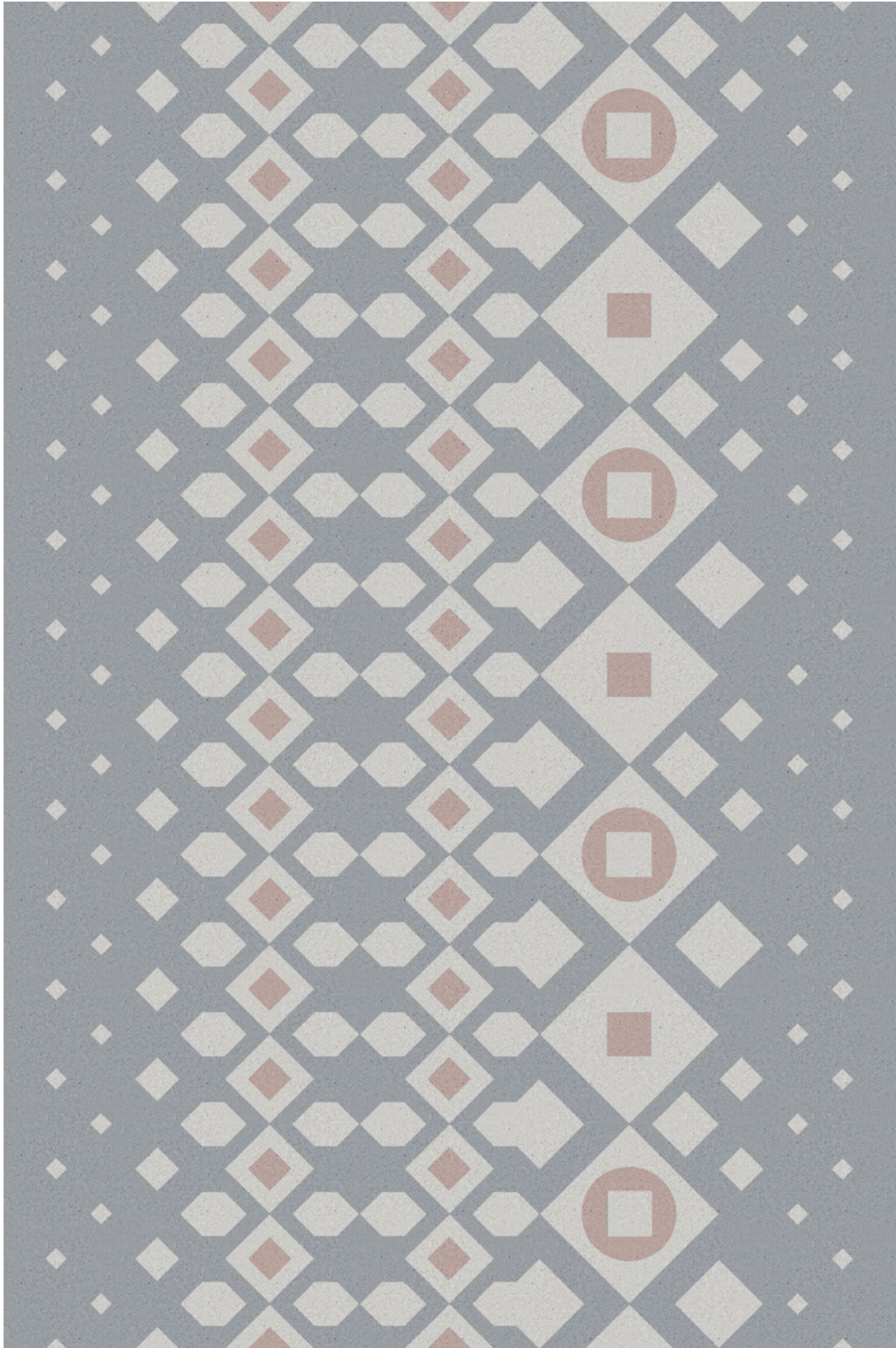




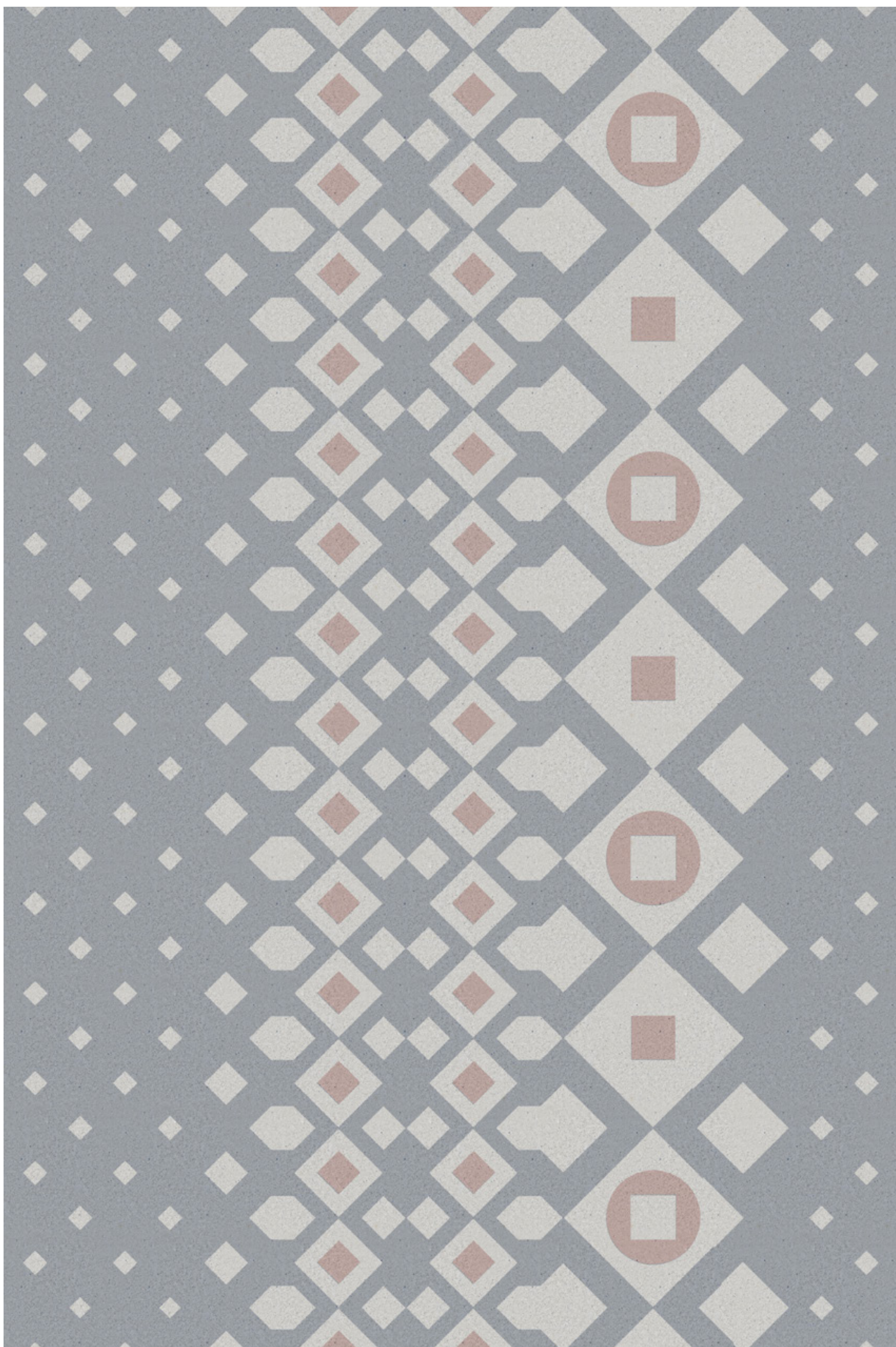
# Pattern & Geometry Studies

## Paving Pattern

Existing

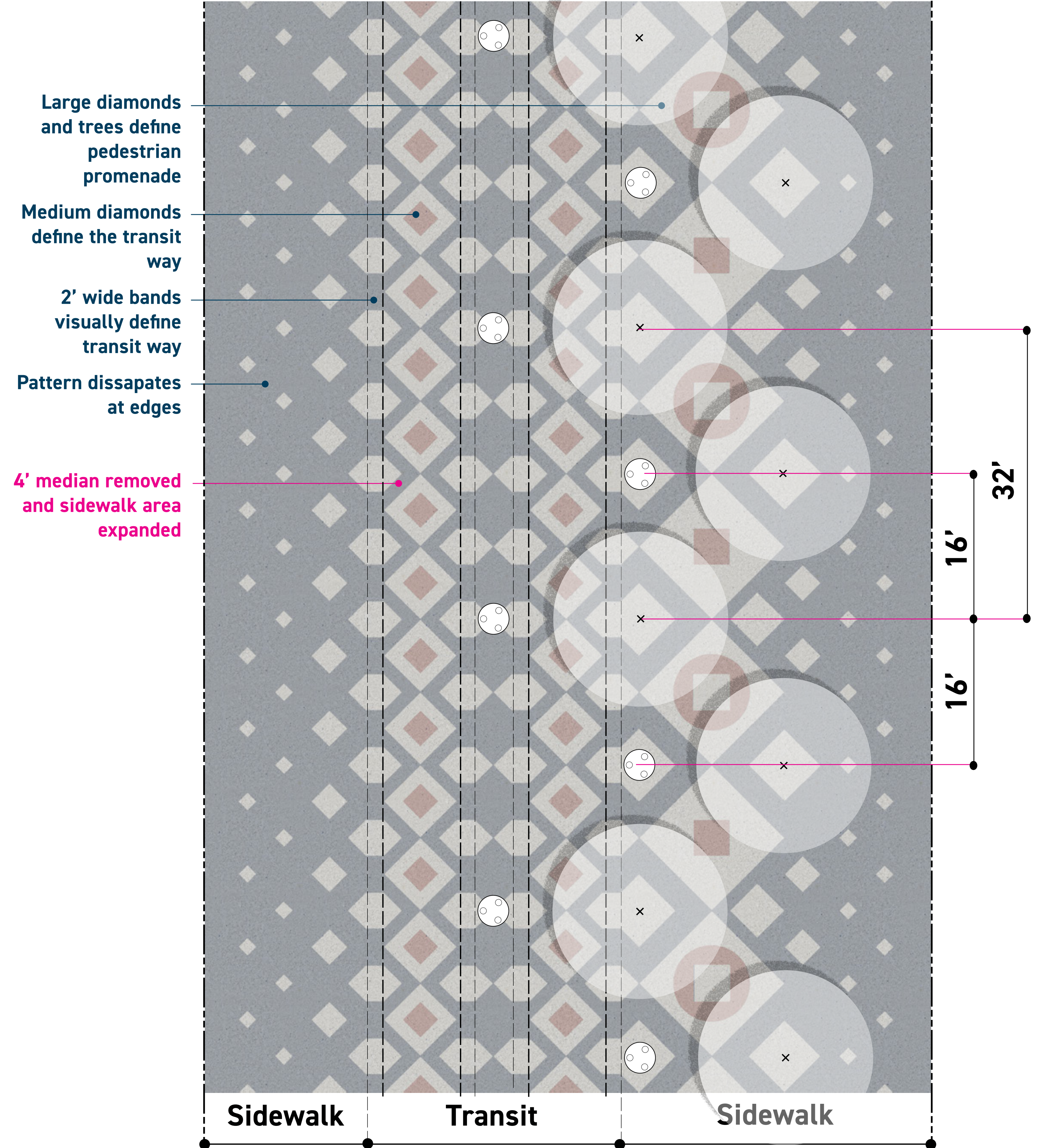


New Asymmetrical



## Pattern & Use

Existing



New Asymmetrical

