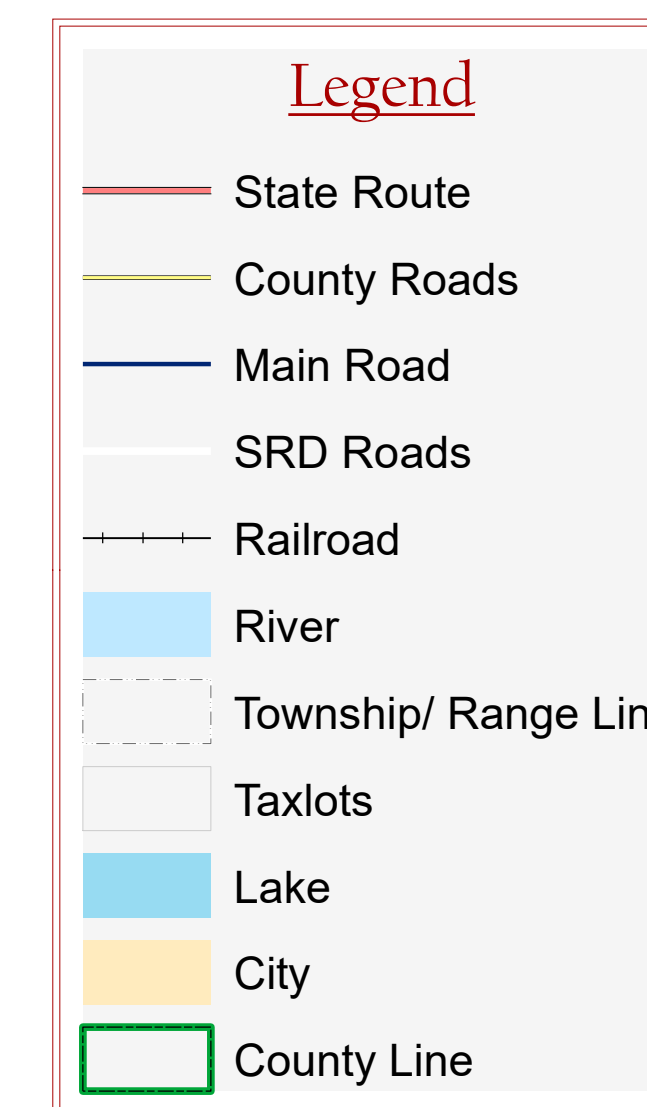
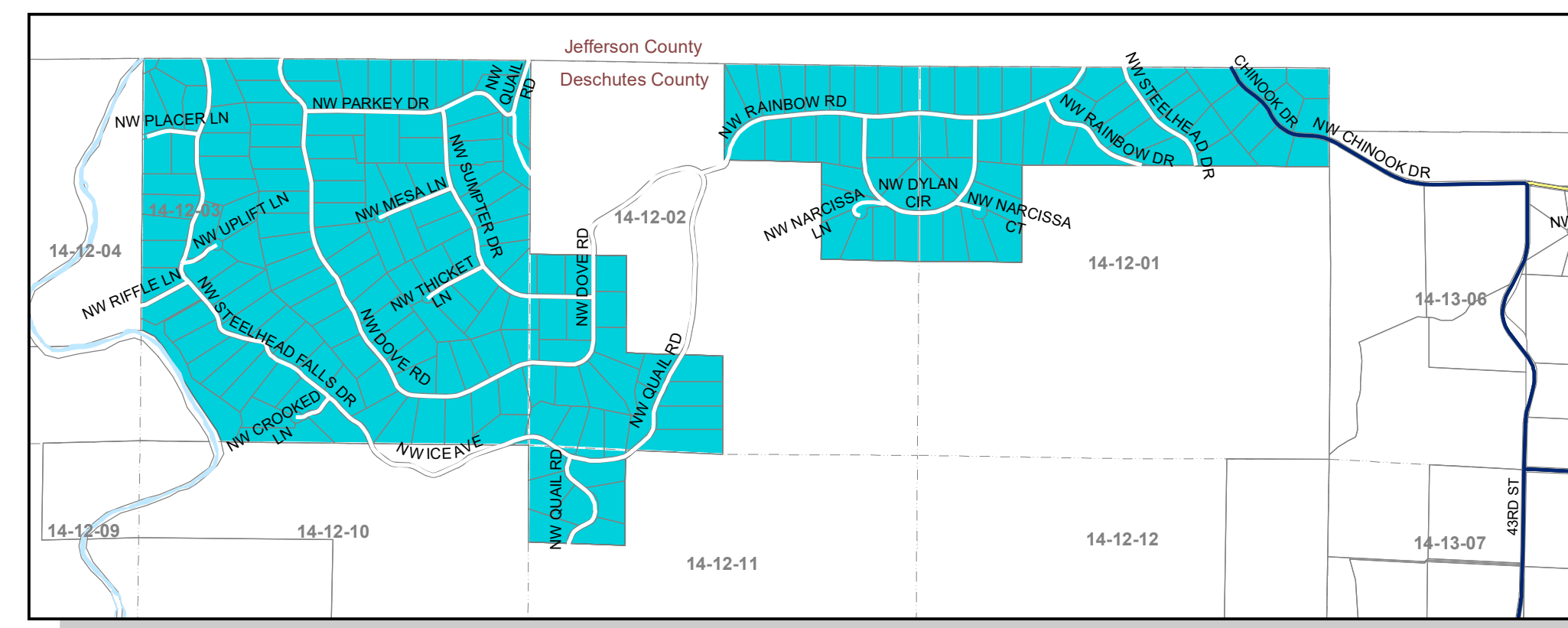
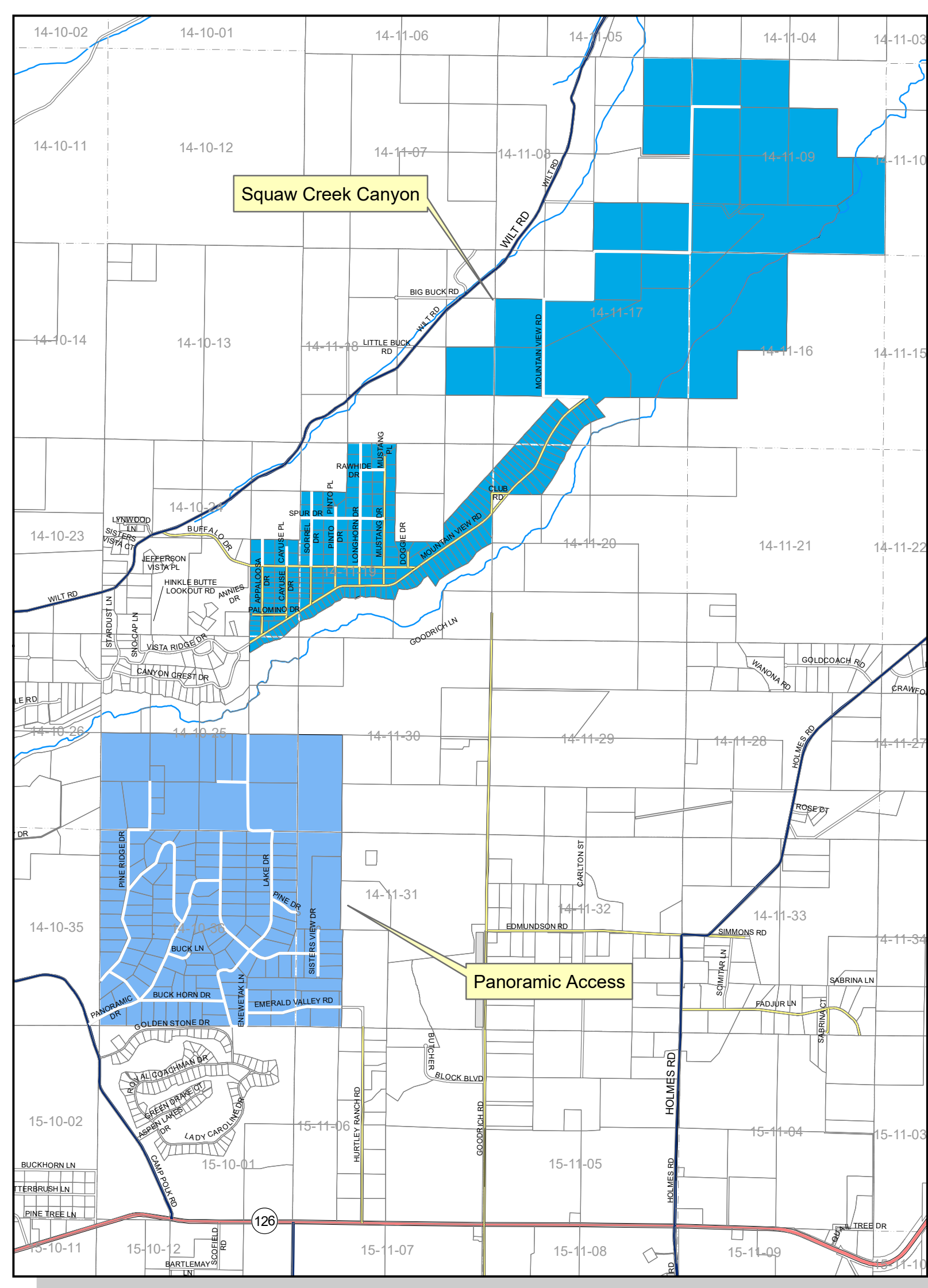
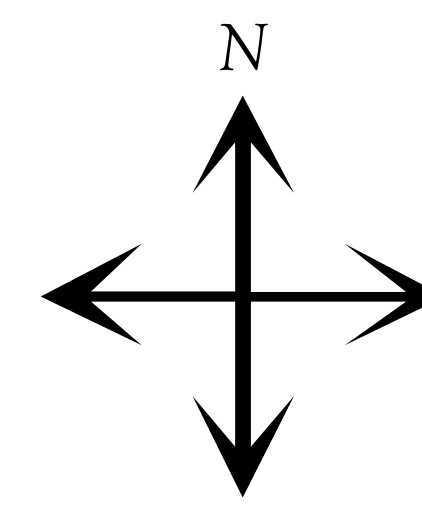


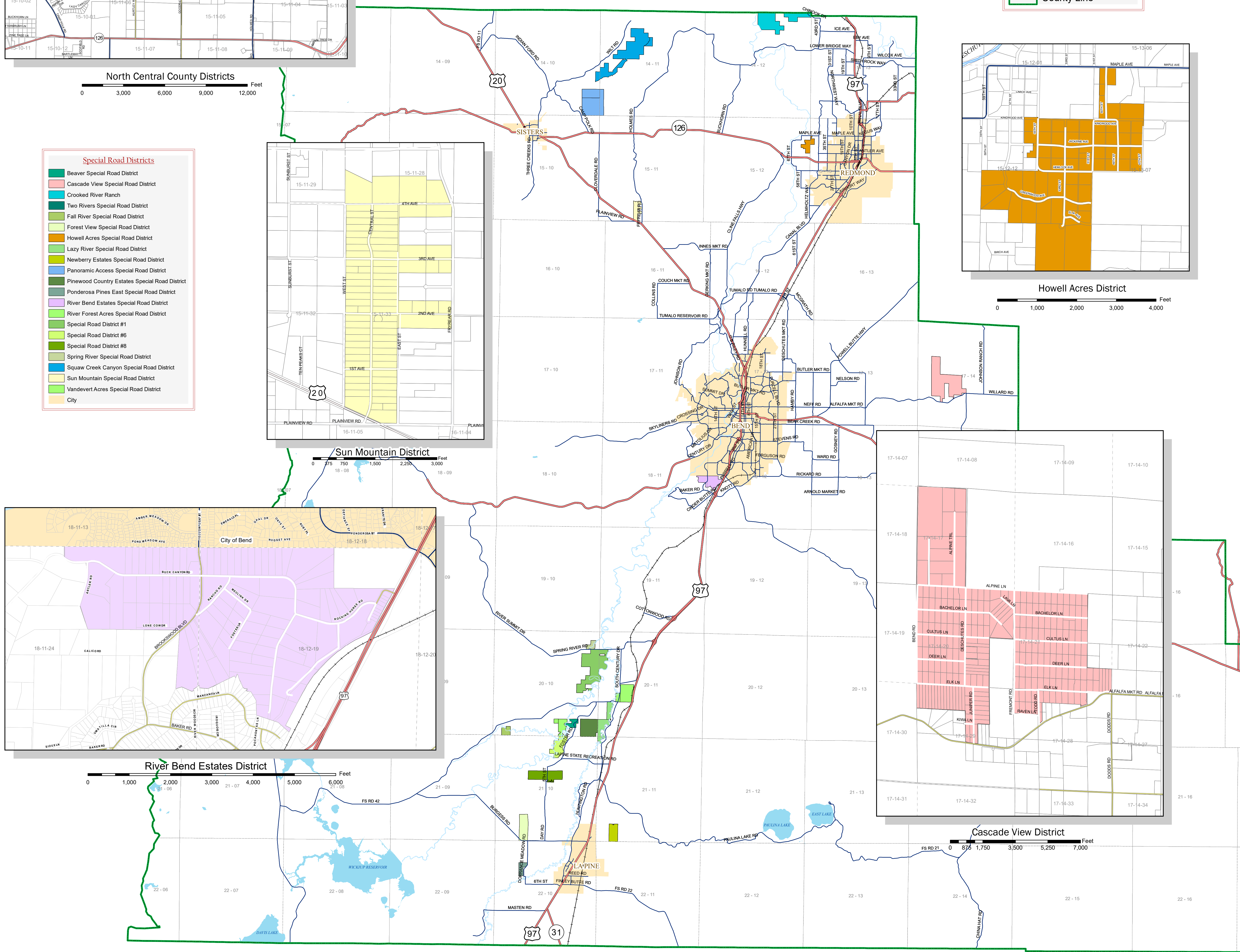
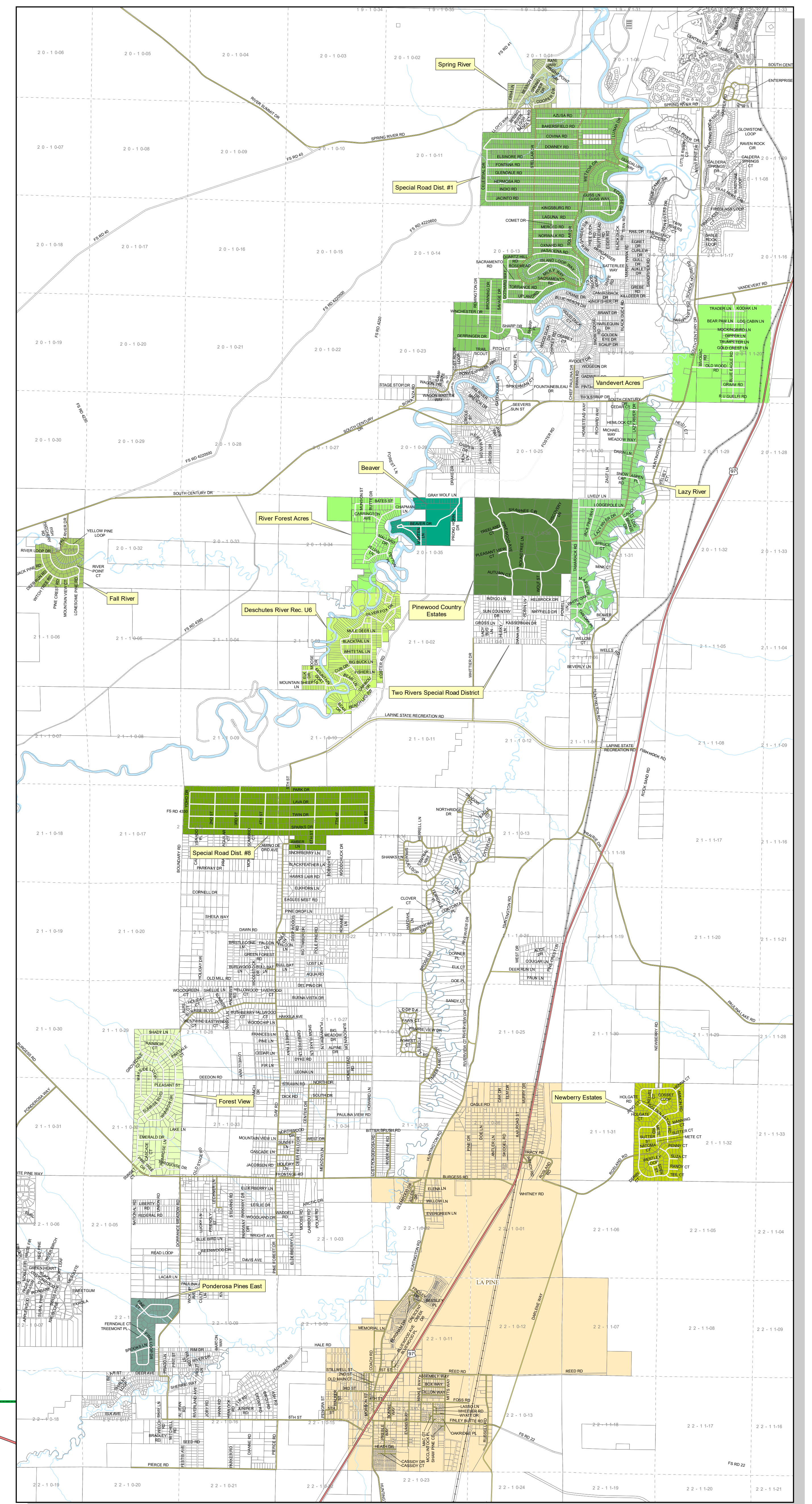
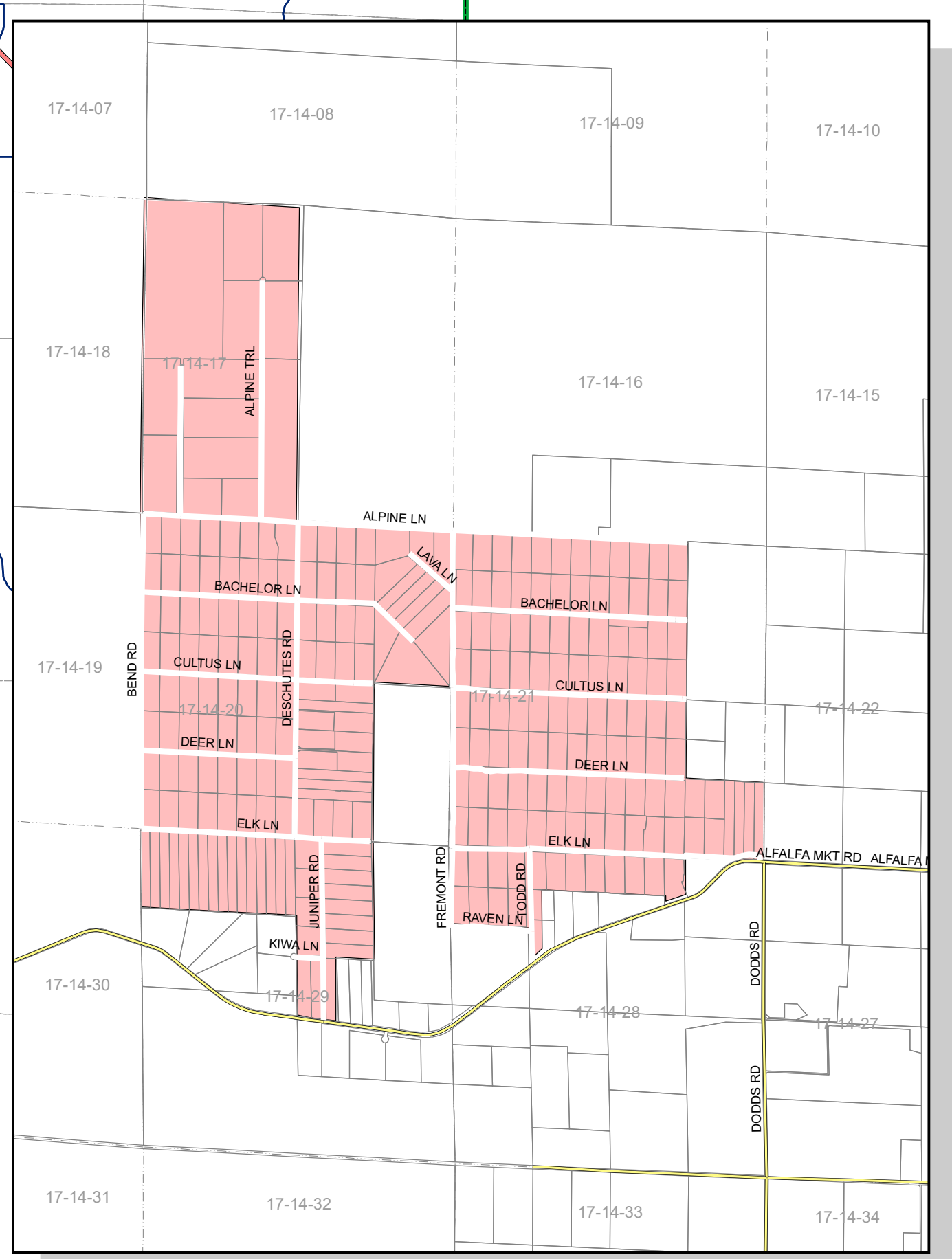
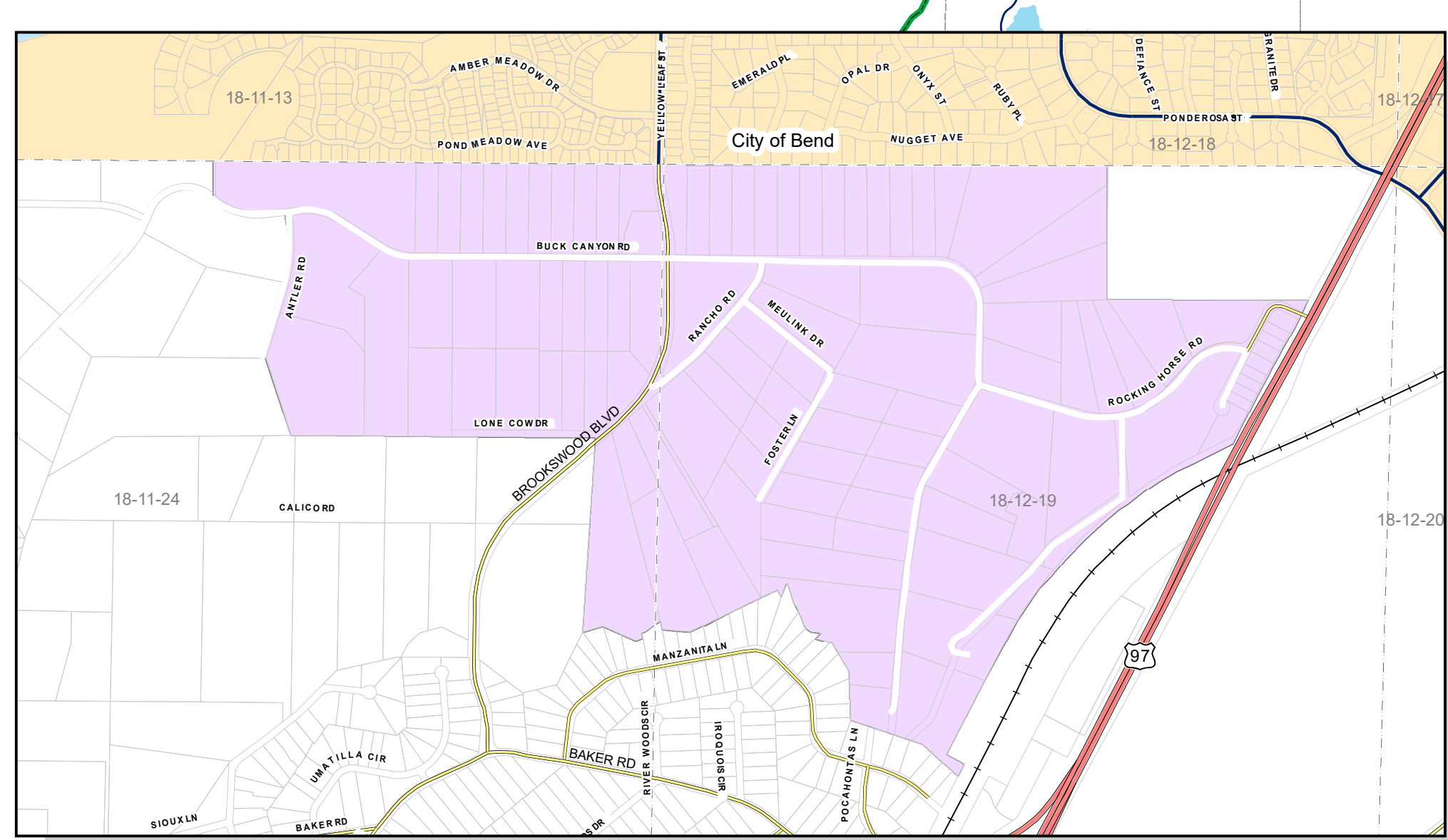
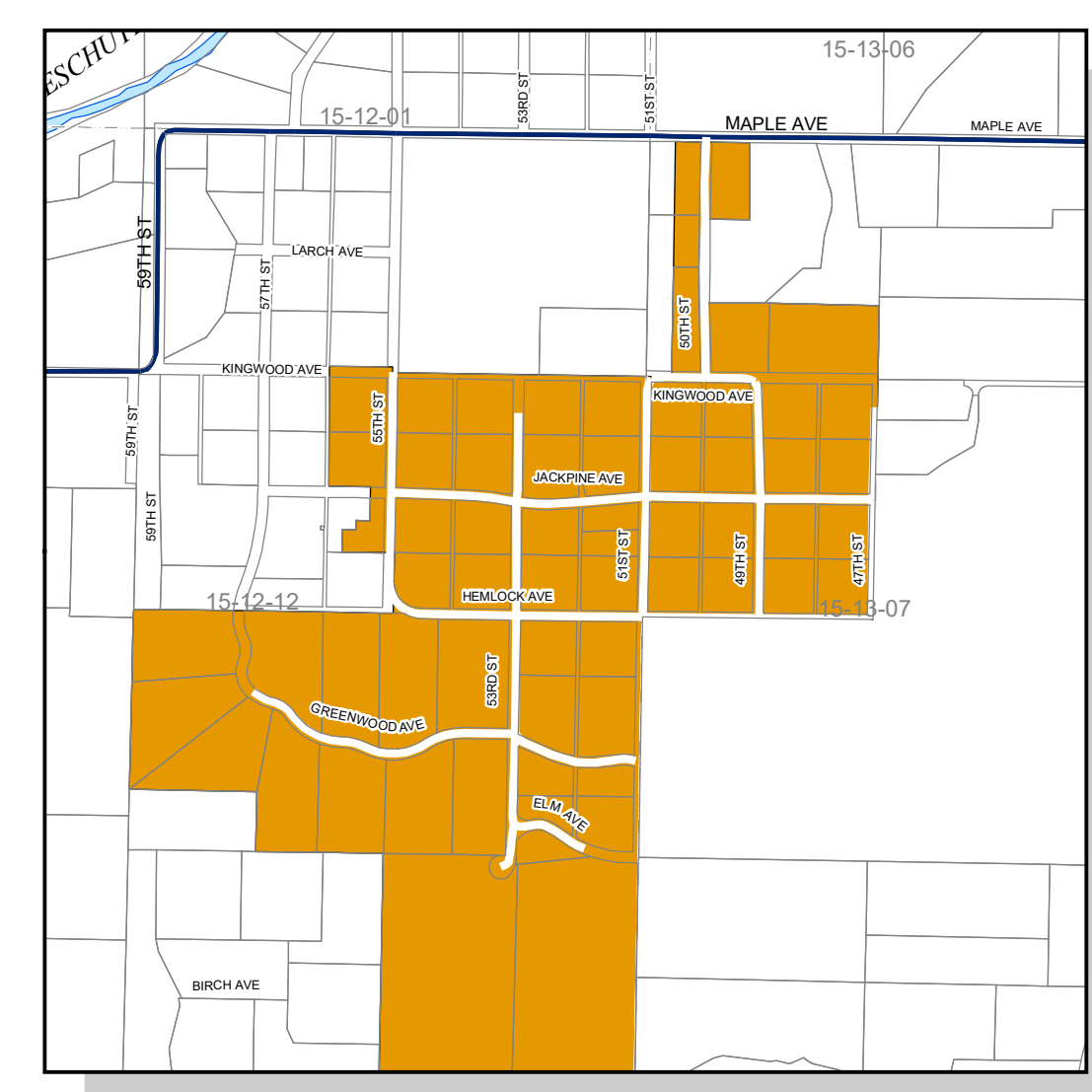
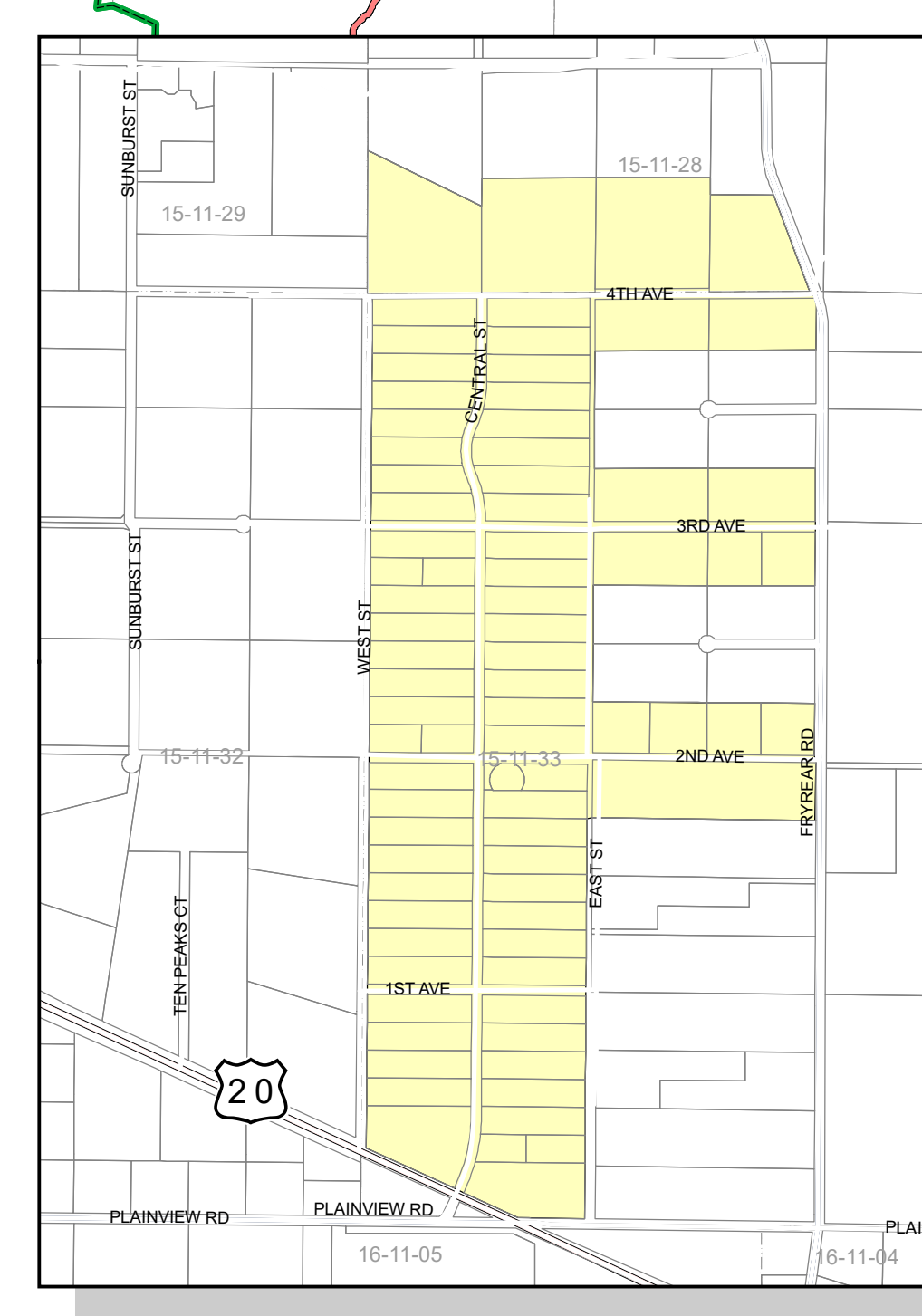
DESCHUTES COUNTY SPECIAL ROAD DISTRICTS

Map detailing all the special road districts for the entire Deschutes County. Each district has a corresponding inset map showing the area in greater detail.

Printed: January 03, 2022



- Special Road Districts**
- Beaver Special Road District
 - Cascade View Special Road District
 - Crooked River Ranch
 - Two Rivers Special Road District
 - Fall River Special Road District
 - Forest View Special Road District
 - Howell Acres Special Road District
 - Lazy River Special Road District
 - Newberry Estates Special Road District
 - Panoramic Access Special Road District
 - Pinewood Country Estates Special Road District
 - Ponderosa Pines East Special Road District
 - River Bend Estates Special Road District
 - River Forest Acres Special Road District
 - Special Road District #1
 - Special Road District #6
 - Special Road District #8
 - Spring River Special Road District
 - Squaw Creek Canyon Special Road District
 - Sun Mountain Special Road District
 - Vandevent Acres Special Road District
 - City



The information on this map was derived from digital databases on Deschutes County's G.I.S. Care was taken in the creation of this map, but it is provided "as is". Deschutes County cannot accept any responsibility for errors, omissions, or positional accuracy in the digital data or the underlying records. There are no warranties, express or implied, including the warranty of merchantability or fitness for a particular purpose, accompanying this product. However, notification of any errors will be appreciated.

DESCHUTES COUNTY ROAD DEPARTMENT
Road Department
GIS DIVISION
 61150 SE 27th St, Bend, OR 97702
 O:(541)322-7123 F:(541)383-2719
 rachel.pinkston@deschutes.org