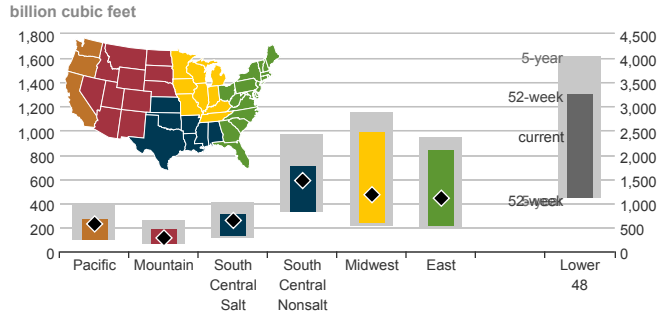
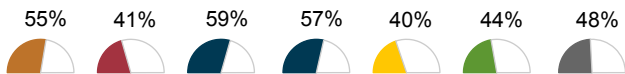


Lower 48 working gas in underground storage as of June 7, 2019: 2,088 Bcf | Weekly net change: ▲ 102 Bcf

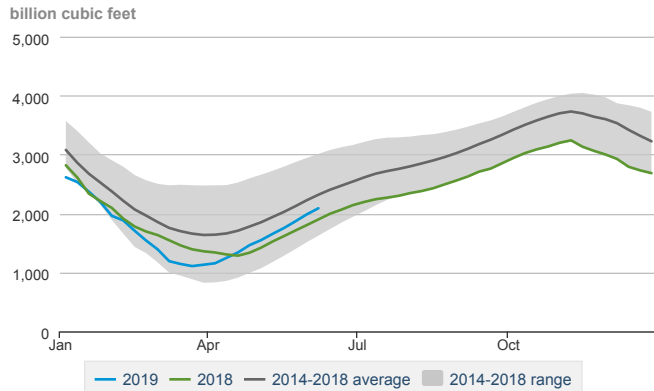
Underground working natural gas storage summary as of June 7, 2019



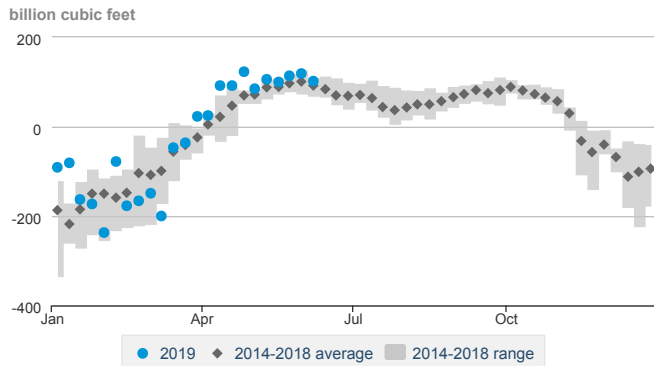
Underground storage capacity utilization



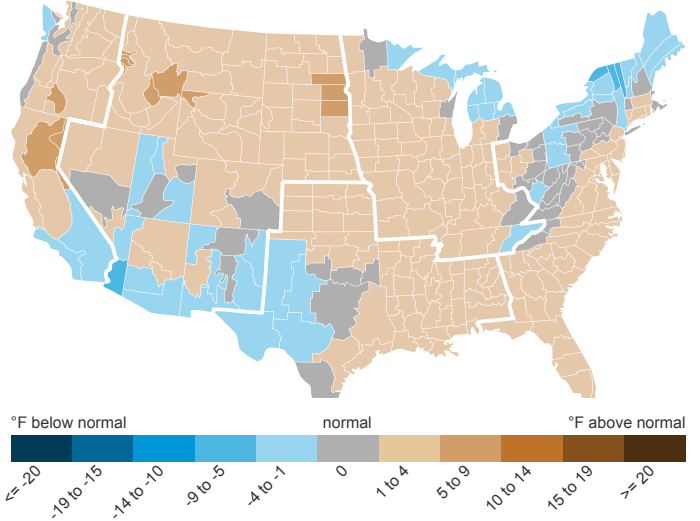
Lower 48 weekly working gas in underground storage



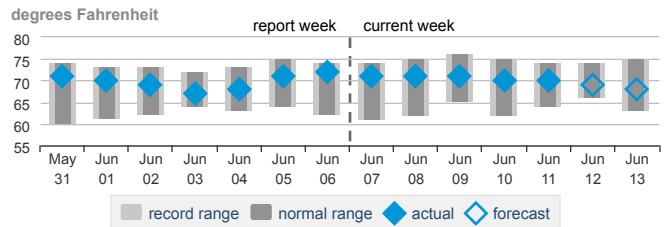
Lower 48 weekly net change in working gas in underground storage



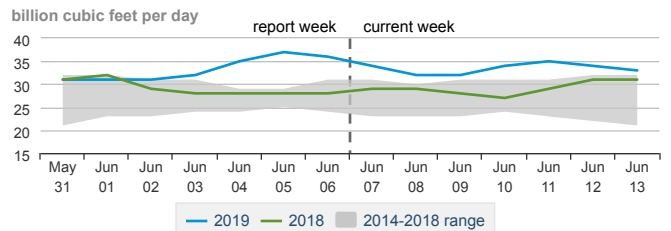
Weekly average departure from normal temperatures as of June 6, 2019



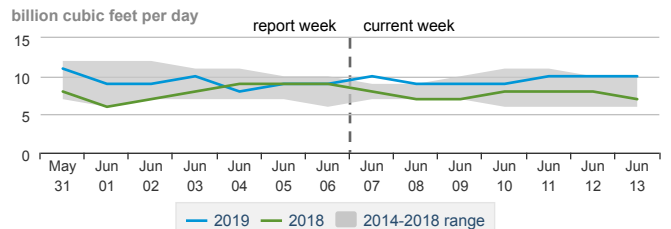
Daily Lower 48 average temperatures



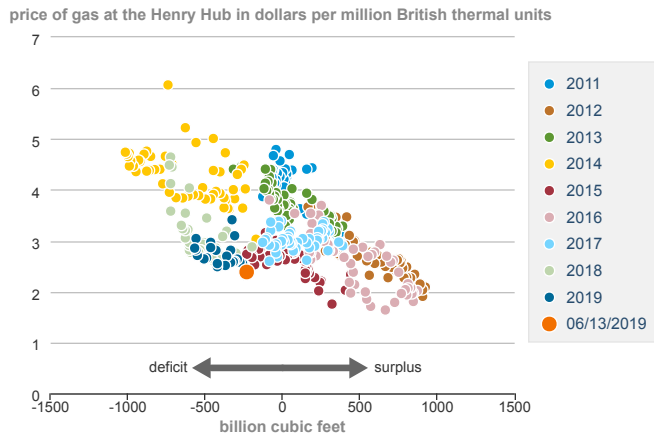
Daily Lower 48 natural gas consumption for electricity generation



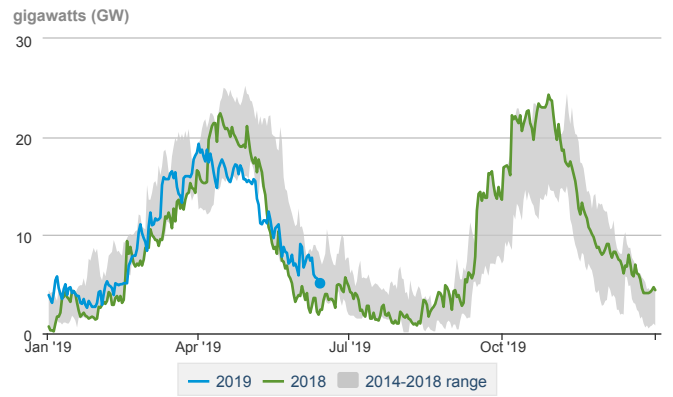
Daily Lower 48 natural gas consumption for residential/commercial use



Lower 48 weekly working gas stocks, minus five-year average, and near-month futures prices

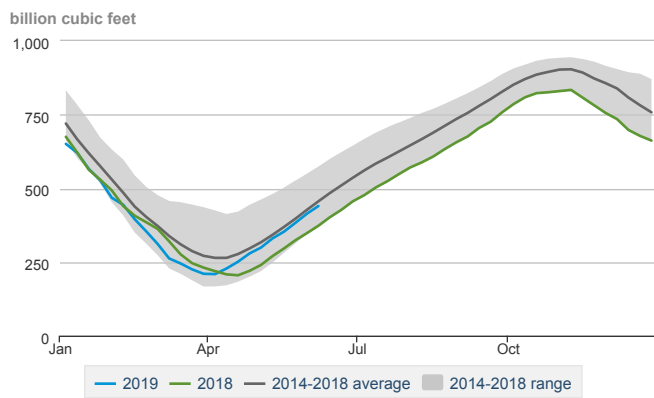


Daily U.S. nuclear outages

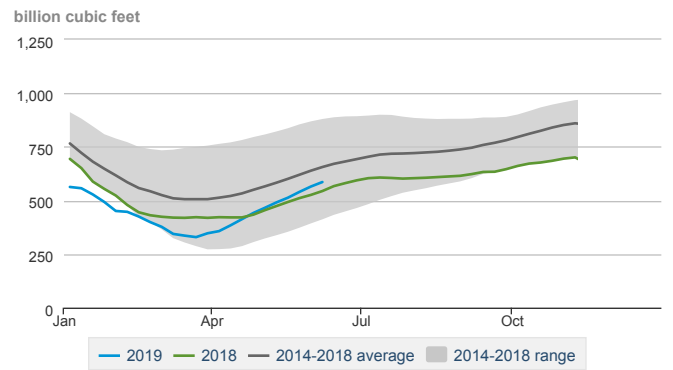


Regional Natural Gas Storage Stocks

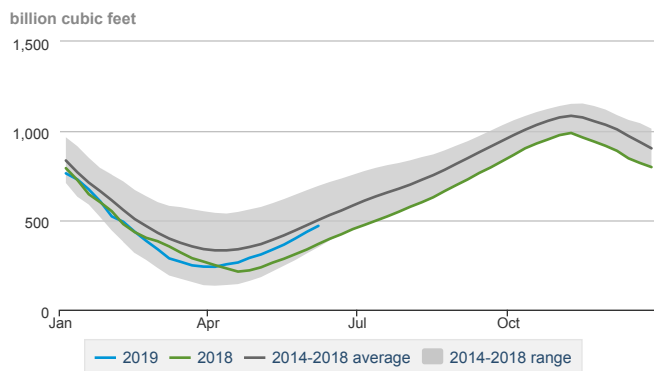
East region weekly working gas in underground storage



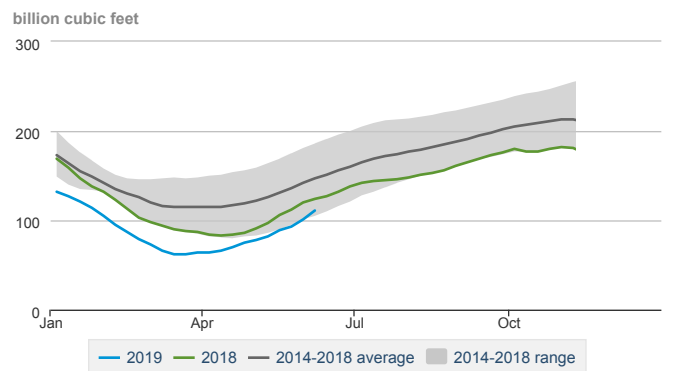
South Central Nonsalt region weekly working gas in underground storage



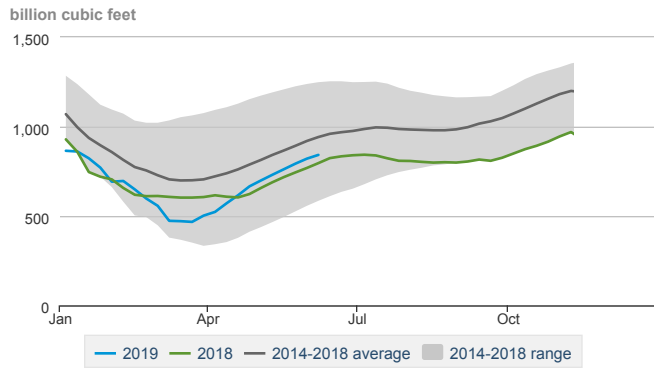
Midwest region weekly working gas in underground storage



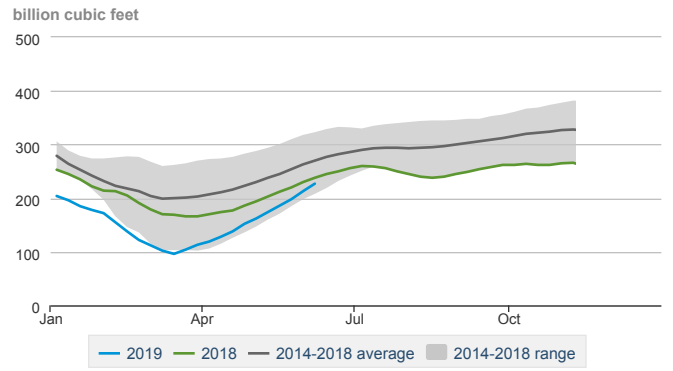
Mountain region weekly working gas in underground storage



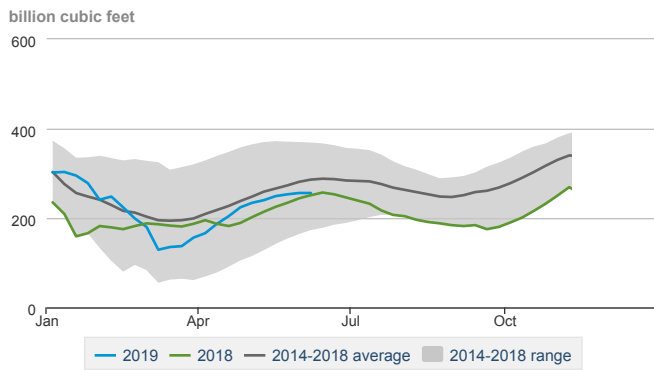
South Central region weekly working gas in underground storage



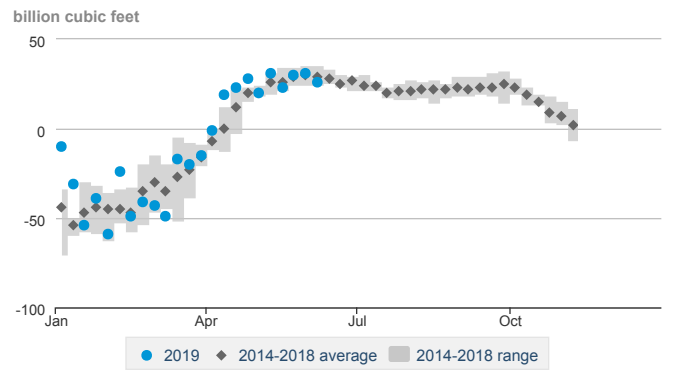
Pacific region weekly working gas in underground storage



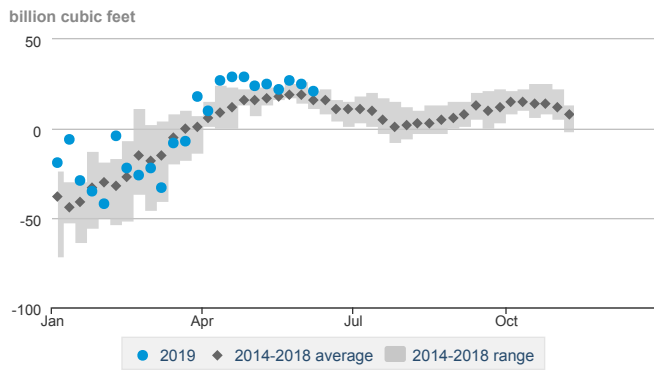
South Central Salt region weekly working gas in underground storage



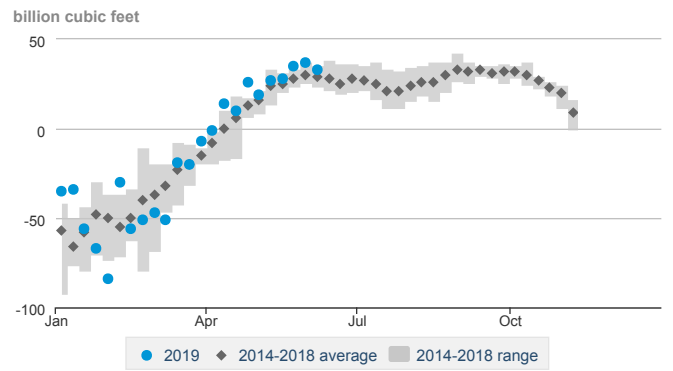
East region weekly net change in working gas in underground storage



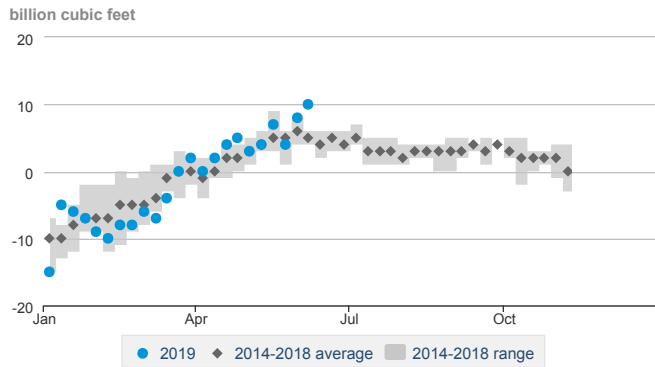
South Central Nonsalt region weekly net change in working gas in underground storage



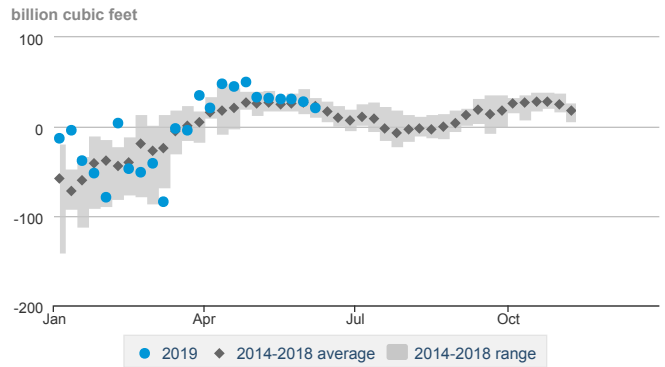
Midwest region weekly net change in working gas in underground storage



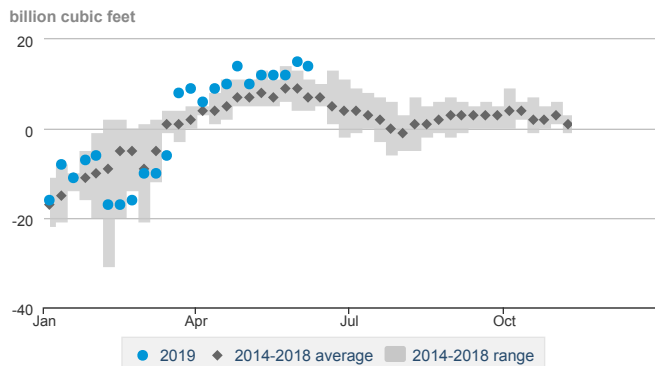
Mountain region weekly net change in working gas in underground storage



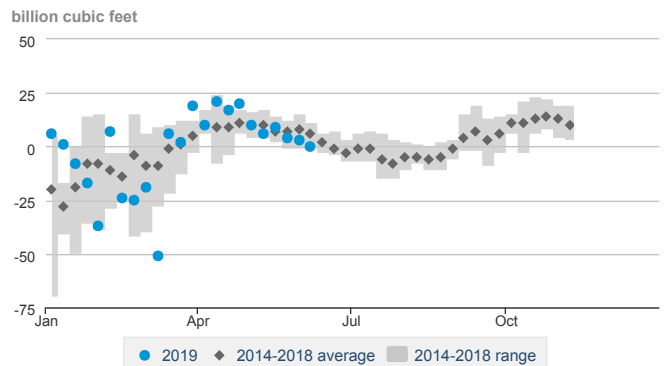
South Central region weekly net change in working gas in underground storage



Pacific region weekly net change in working gas in underground storage



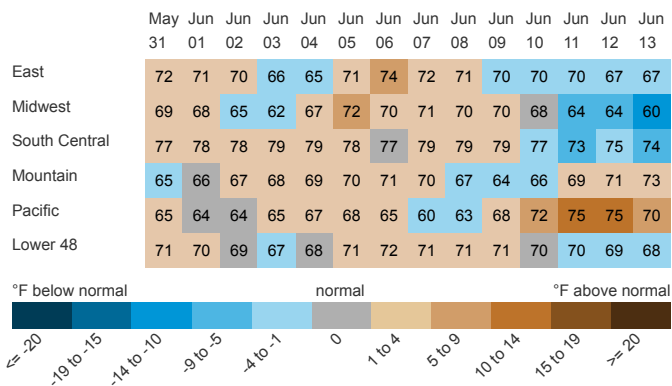
South Central Salt region weekly net change in working gas in underground storage



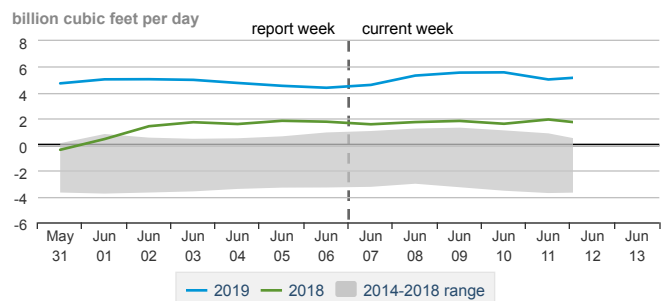
Prices and Other Indicators

Daily regional average temperatures and departure from normal

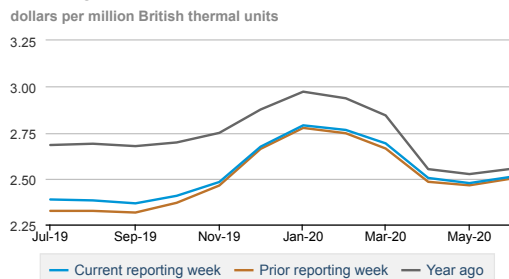
degrees Fahrenheit



Daily Lower 48 net natural gas exports (includes pipeline gas and LNG feedstock/sendout changes)



Natural gas futures price (twelve-month strip)



Have a question, comment, or suggestion? Send your feedback to natgasstoragedashboard@eia.gov