

Environmental Justice Webinar Series for Tribes and Indigenous Peoples

EJ Grants for Tribal Public Participation & Other EPA EJ Financial Assistance Programs Available to Tribes & Indigenous Peoples

April 14, 2022

*Please note that this webinar will be recorded
and posted on EPA's webpage for public access.

Panelists

- Sarah Frederick, EJSG for Tribes Competition Lead, American Indian Environmental Office, U.S. EPA
- Jacob Burney, Grants Manager, Office of Environmental Justice, U.S. EPA
- Michael Opheim, Environmental Coordinator, Seldovia Village Tribe
- Stephen Payton, Environmental Assistant, Seldovia Village Tribe
- Jane Kahkonen, Air Quality Specialist, Environmental Health Section, Keweenaw Bay Indian Community
- Aubrey Arain, Industrial Hygiene Program Specialist, Cal Poly State University, Lecturer, Oakland University
- Marilyn Yang, Intern, Office of Environmental Justice, U.S. EPA
- Danny Gogal, Tribal and Indigenous Peoples Program Manager, Office of Environmental Justice, U.S. EPA (Facilitator)



New EJ Small Grants Opportunity for Tribes

Sarah Frederick

American Indian Environmental Office, U.S. EPA

Frederick.Sarah@epa.gov | (206) 553 1601



American Rescue Plan (ARP)

\$1.6 million in ARP resources are available to fund EJ Small Grants to federally recognized tribal governments to establish or modify public participation programs where fair treatment and meaningful participation priorities have been impacted by the COVID-19 pandemic.

Funding

FOR THIS SINGLE EJ SMALL GRANT FUNDING ANNOUNCEMENT ONLY:

- Up to \$1.6 million in ARP funding
- Approximately 16-20 grants will be awarded
 - Applicants may request up to \$100,000
- One time funding opportunity

Eligibility

FOR THIS SINGLE EJ SMALL GRANT FUNDING ANNOUNCEMENT ONLY:

- Eligible applicants are limited to federally recognized tribal governments.
- Projects must support tribal governments efforts to establish or modify public participation programs where fair treatment and meaningful participation priorities have been impacted by the COVID-19 pandemic.
- Projects must include activities related to at least one of the following federal environmental statutes:
 1. Clean Air Act, Section 103(b)(3)
 2. Safe Drinking Water Act, Section 1442(c)(3)
- ❖ Public participation programs may address other environmental programs or a broad spectrum of programs, as long as at least one of the required statutes is included.

Meaningful Participation

Meaningful participation or involvement means that:

1. potentially affected community residents have an appropriate opportunity to participate in decisions about a proposed activity that will affect their environment and/or health;
2. the public's contribution can influence the regulatory agency's decision;
3. the concerns of all participants involved will be considered in the decision-making process; and
4. the decision-makers seek out and facilitate the involvement of those potentially affected.

COVID-19 Impacts

As a result of the COVID-19 pandemic, many tribal, state, local, and federal government public participation processes have been disrupted by the inability to convene community meetings in public forums.

Public Participation

Public participation can be any process that directly engages the public in decision-making and gives full consideration to public input in making that decision.

Helpful Resources:

<https://www.epa.gov/international-cooperation/public-participation-guide-introduction-public-participation>

<https://www.epa.gov/system/files/documents/2021-08/powerpoint-meaningful-public-part-web-final.pdf>

<https://www.epa.gov/sites/default/files/2015-02/documents/ips-final-report.pdf>

Forms of Public Participation

Forms public participation might take include:

1. Informing the public by providing information to help them understand the issues, options, and solutions;
2. Consulting with the public to obtain their feedback on alternatives or decisions;
3. Involving the public to ensure their concerns are considered throughout the decision process, particularly in the development of decision criteria and options;
4. Collaborating with the public to develop decision criteria and alternatives and identify the preferred solution; and
5. Empowering the public by placing final decision-making authority in their hands.

Public Participation

Environmental functions with community involvement requirements typically include:

- National Environmental Policy Act (NEPA),
- permitting actions
- rulemaking
- cleanup and redevelopment
- compliance and enforcement activities

Examples
of Eligible
Activities
related to
the Federal
Statutes

Clean Air Act, Section 103(b)(3):

conduct research, investigations, experiments, demonstration projects, surveys, and studies (including monitoring) related to the causes, effects (including health and welfare effects), extent, prevention, and control of air pollution.

Safe Drinking Water Act, Section 1442(c)(3):

develop and expand the capability to carry out a program (that may combine training, education, and employment) for occupations relating to the public health aspects of providing safe drinking water.

Up to \$1.6 million available to fund grants nationwide

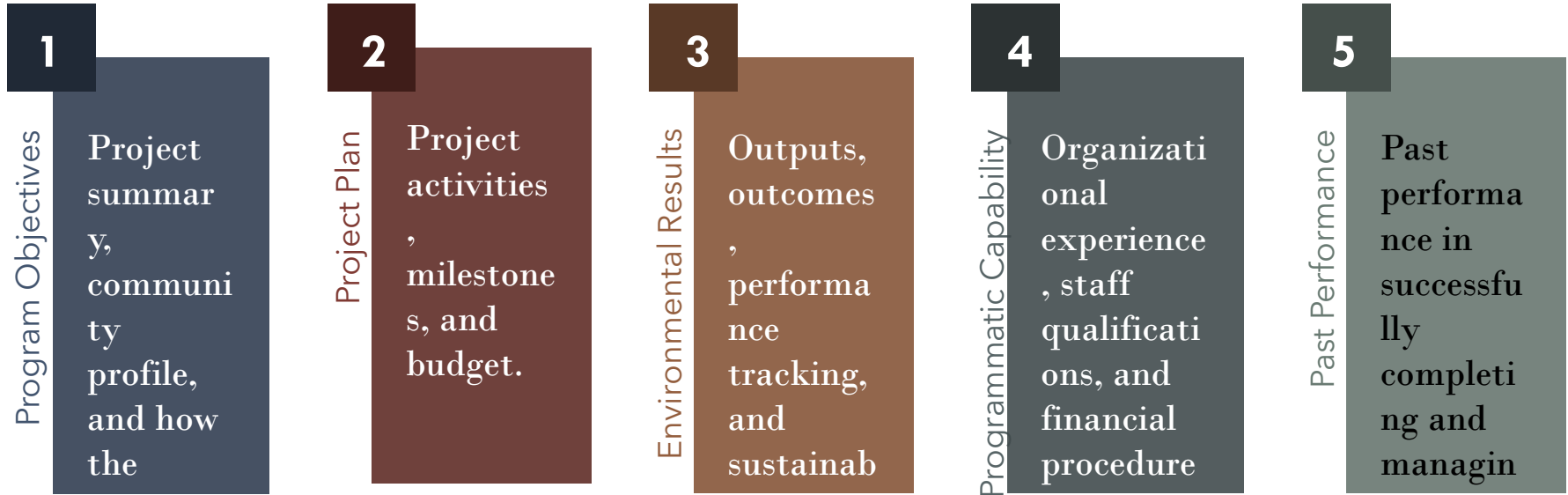
Applicants may request up to \$100,000 (approximately 16-20 grants will be awarded)

1 Application per Applicant

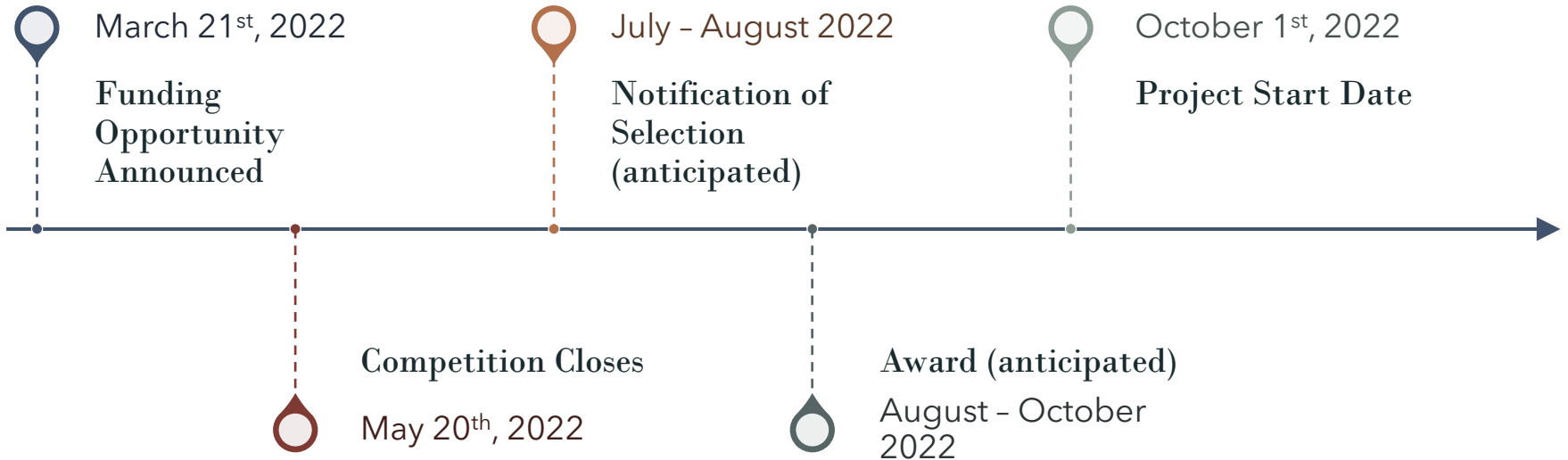
Proposed projects should be scoped for completion in 1 year (i.e., 10/1/22 – 9/30/23)

Other Key Points

Applicants will be evaluated on:



Timeline



Events &
Opportunities
to Learn
More

April 14th, 2:30-4pm ET
EJSG Webinar

May 3rd, 2:30-4pm ET
EJ Screen Live Demo

Environmental Justice Small Grants

epa.gov/environmentaljustice/environmental-justice-small-grants-program

An official website of the United States government [Here's how you know](#)

 **EPA** United States Environmental Protection Agency

Search EPA.gov

[Environmental Topics](#) [Laws & Regulations](#) [Report a Violation](#) [About EPA](#)

Environmental Justice

[CONTACT US](#)

- [Environmental Justice \(EJ\) Home](#)
- [Learn About Environmental Justice](#)
- [EJ 2020 Action Agenda](#)
- [National Environmental Justice Advisory Council](#)
- [Grants and Resources](#)
- [EJ in Your Community](#)
- [Federal Interagency Working Group on EJ](#)

Environmental Justice Small Grants Program

Since its inception in 1994, the Environmental Justice Small Grants (EJSG) Program has awarded more than \$37 million in funding to over 1500 community-based organizations, tribal governments, and Native American organizations working with communities facing environmental justice issues.

The Environmental Justice Small Grants Program supports and empowers communities working on solutions to local environmental and public health issues. The program is designed to help communities understand and address exposure to multiple environmental harms and risks. Environmental Justice Small Grants fund projects up to \$100,000, depending on the availability of funds in a given year. All projects are associated with at least one qualified environmental

Environmental Justice Small Grants Program

Request for Applications (RFA)



EPA Environmental Justice Grants Program:

- ✓ Identifying Issues
- ✓ Building Capacity
- ✓ Generating Solutions

Jacob Burney, EPA EJ Grants
April 6, 2022

Purpose and Goals

- The EJ grants program provides funding **directly** to community-based organizations (i.e., local non-profits, grassroots orgs, and tribes), as well as to states and local governments for projects that help residents of underserved communities understand and address local environmental / public health issues that have a **disproportionate** impact on the local population.
- Communities **Drive** the Projects
- The immediate goals of the EJ grants program:
 - **Accessibility** – The EJ grants program is designed to be one of the most accessible federal grant programs
 - **Gaining Familiarity with Federal Grants**
 - **Building Sustainable Coalitions and Partnerships**

Recent EJ Funding Opportunities

- Three different EJ grant opportunities were open from 2020 - 2021:
 - 1) **EJ Small Grants Program (EJSG)**
 - 2) **EJ Collaborative Problem-Solving Program (EJCPS)**
 - 3) **State EJ Cooperative Agreement Program (SEJCA)**
- **Focus Areas:** 1) COVID-19 impacts, 2) Climate Disaster Resiliency, 3) Ports and Railyards, 4) Small non-profits, and 5) new grantees and applicants
- Available funding between the three opportunities was ~ **\$18.4 million**
- **154** EJ grants were selected nationwide
 - 99 EJ Small Grants
 - 34 EJCPS awards
 - 21 SEJCA awards

Environmental Justice Small Grants (\$75K)

- Who is eligible to apply?
 - incorporated non-profit organizations
 - tribal governments and tribal organizations
 - US Territories
 - Freely Associated States (FAS) – Micronesia, Palau, and the Marshall Islands

- Project Length: One-year

- 99 projects nationwide
 - Designed for smaller community orgs
 - Small Funds are catalytic and can act as “seed” money for organizations and communities

EJ Collaborative Problem-Solving (\$200K)

- Who is eligible to apply?
 - incorporated non-profit organizations
 - tribal governments and tribal organizations
 - US Territories
 - Freely Associated States (FAS) – Micronesia, Palau, and the Marshall Islands

- Project Length – Two Years

- Required use of the EJPCS Model during the project
 - This is a tool that helps grantees build sustainable partnerships

- 34 projects awarded nationwide
 - Designed for larger, more well-established organizations
 - Cooperative Agreements (substantial involvement with EPA)

State EJ Cooperative Agreements (\$200K)

- Who is eligible to apply?
 - State governments
 - Local governments (cities, towns, municipalities, school districts, etc.)
 - Federally recognized tribal governments
 - State recognized tribal governments
 - US Territories
 - Freely Associated States (FAS) – Micronesia, Palau, and the Marshall Islands

- Project Length – Two Years

- Required use of the EJPCS Model during the project
 - This is a tool that helps grantees build sustainable partnerships

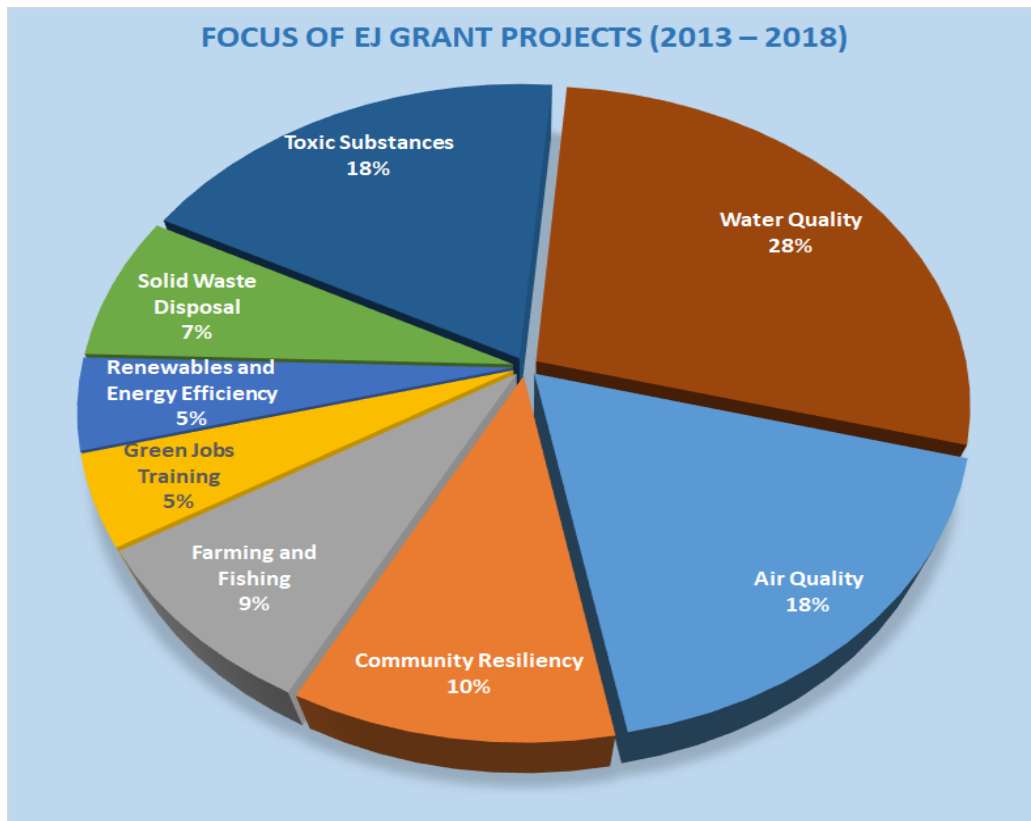
- 21 projects awarded nationwide
 - Designed for governmental organizations to develop and promote their own local EJ programs and EJ analysis tools in partnership with local communities
 - Cooperative Agreements (substantial involvement with EPA)

Flexibility in Project Type

- Projects can incorporate activities allowable under SEVEN different environmental statutes (must include at least one)
 - Clean Air Act; Clean Water Act; Fed Insecticide, Fungicide, & Rodenticide Act; Marine Protection, Research, and Sanctuaries Act; Safe Drinking Water Act; Solid Waste Disposal Act; Toxic Substances Control Act
- Eligible project types:
 - Air Quality and Asthma
 - Water Quality, Sampling, and Stormwater Issues
 - Lead, Pesticide, and Toxic Substances
 - Agriculture and Fishing
 - Green Infrastructure
 - Environmental Job Training and Youth Development
 - ...and more!!!



Project Type Breakdown



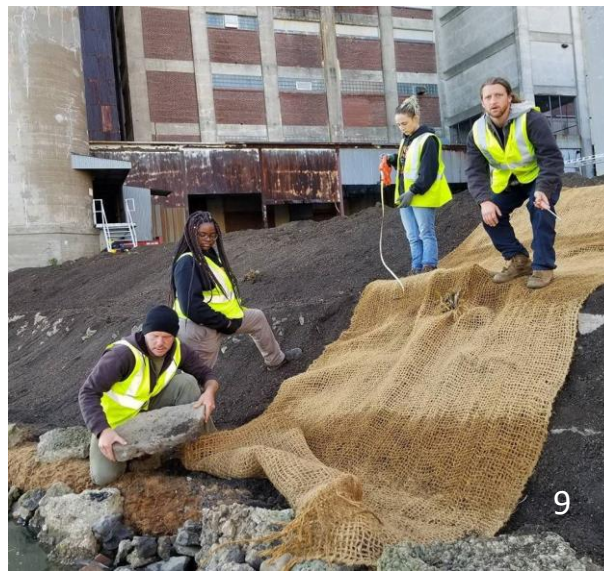
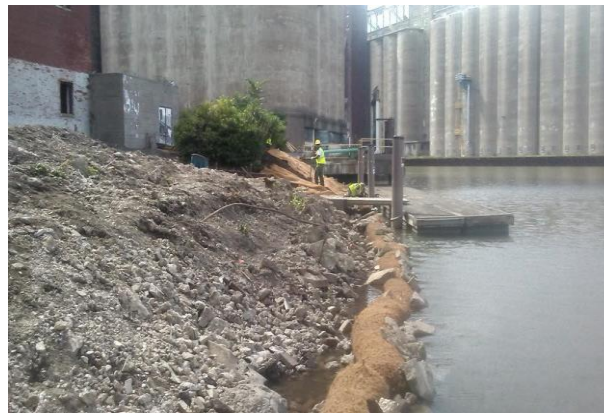
EJ Grant Projects and Stories

People for Sustainable Housing (PUSH Buffalo) (Buffalo New York)

- 2016 EJCPS project
- Environmental Workforce Development and GI Installation
- Objectives: Create a pipeline of qualified workers to address Buffalo River Watershed issues



BEFORE:





AFTER

More EJ Grant Projects and Stories

Friends of the Kaw (Wyandotte County, KS)

- 2015 EJ Small Grant project
- Project focused on providing local students with hands-on experiences and opportunities to learn how water quality impacts their community



Project Details:

- Classes and instruction provided to over 625 students at county schools
- Curriculum included introductions and instruction on watersheds and water cycles, data collecting and analysis, field experiences, and environmental planning meetings.



Guidance for Writing Strong EJ Grant Applications

- 1) The project idea should be developed from within the community
- 2) Work to ensure there is broad-based community support for the project
- 3) The project should build on existing projects or programs
- 4) Clearly identify and describe the population to be served
 - a. Include demographic and geographic data, and community history.
 - b. Applicants are strongly encouraged to use EPA's [EJSCREEN](#) tool and/or data from studies, census, and other sources to describe the target community.
 - c. If data is limited for a particular community, then applicants can include first-person accounts and/or a community's impressions of the environmental and/or public health issues impacting their communities.

Guidance for Writing Strong EJ Grant Applications cont.

- 4) Convey the Story of Your Community / Strategic Storytelling
 - a. Don't just simply plug in data, facts & figures
 - b. Use data to effectively convey the story of your community. Remember that those of us who will review your applications are people too. And people relate to stories.
 - c. In addition to including data and metrics in your project narrative, weave in information and experiences from the community. Personalize it!
 - d. For example, quotes from community members, as well as short stories/testimonials from residents about living in the community and/or successes working with your organization are great supplements to the data and metrics you provide.

Guidance for Writing Strong EJ Grant Applications cont.

- 5) Develop strong partnerships with local institutions and community groups
- 6) Proposal should identify specific outputs, target accomplishments, estimated budgets for each goal, and target dates for completion
- 7) Pay attention to the point allocations in the Eval Criteria
 - a. In general, you should spend more time and effort in the sections that are worth more points.
 - b. Don't spend hours on something worth two points and only spend 30 minutes on something worth 10 points.

Guidance for Writing Strong EJ Grant Applications cont.

- 8) Find ways to save space in your workplan
 - a. 11 – 14 pages goes faster than you think
 - b. Be concise where possible
 - c. Include attachments and use in-text references specifically referring readers of your application to view those attachments
 - d. Using footnotes may also save space

Guidance for Writing Strong EJ Grant Applications cont.

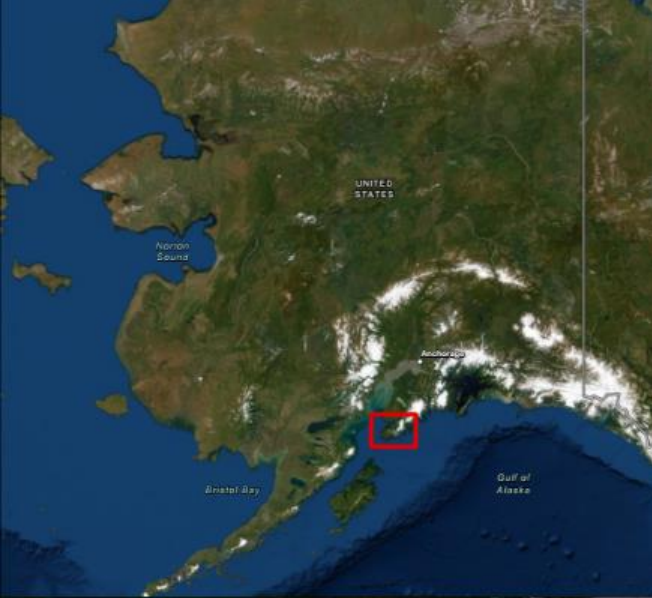
- 9) Work to make your application easy-to-read
 - a. Don't cram in absolutely everything with no white space
 - b. Strategically use graphs, charts, pictures, and hyperlinks to help organize your workplan and break-up the white space
 - c. Remember, the people reviewing your application are people too. They have a lot of applications to review, so if you make it easy on them or even fun to read your application, that may work in your favor.

EJ Grant Writing Pitfalls

- 1) Applicant applies for a grant they are **not** eligible for
- 2) Applicant submits an ineligible project for a grant their organization **is** eligible for
 - a. E.g., Construction, human trafficking, routine program implementation
 - b. During the solicitation open period, interested applicants should contact the program to run their project idea by the funder
- 3) Community (and community members) did not appear to be an integral part of the planning process
- 4) Lack of strong partnerships and/or letters of commitment

EJ Grant Writing Pitfalls cont.

- 5) Applicant provides little detail, data, or figures on the disproportionate environmental/public health issues plaguing the community
- 6) Budget is not detailed and/or calculations are incorrect
- 7) Project activities, steps, and milestones are not clear
 - a. It is difficult to understand exactly what the applicant is doing or how the project activities will lead to environmental/health improvements for the community
- 8) Methods for evaluating the scope and size of the project are unclear (e.g., broad / generic metrics, few specific outputs/outcomes listed in the logic model)



SELDOVIA VILLAGE TRIBE

YOU SURVIVED A NATURAL DISASTER, NOW GRAB YOUR EPB

Providing the community with knowledge of potential disasters and how to prepare for them, react during, and what to expect after.

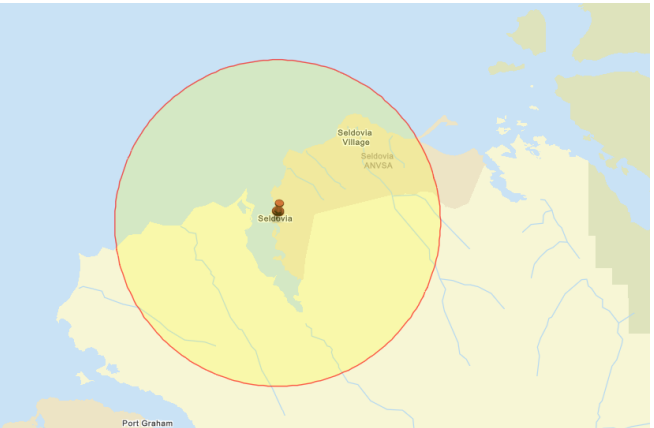
Supplement this knowledge with resources including emergency preparedness buckets.

This will result in a more prepared and resilient community.

Seldovia

| Selected Variables | Value | State Avg. | %ile in State | EPA Region Avg. | %ile in EPA Region | USA Avg. | %ile in USA |
|---|---------|------------|---------------|-----------------|--------------------|----------|-------------|
| Environmental Indicators | | | | | | | |
| Particulate Matter (PM 2.5 in $\mu\text{g}/\text{m}^3$) | N/A | N/A | N/A | 7.54 | N/A | 9.53 | N/A |
| Ozone (ppb) | N/A | N/A | N/A | 38.1 | N/A | 42.5 | N/A |
| NATA* Diesel PM ($\mu\text{g}/\text{m}^3$) | 0.00175 | 0.418 | 11 | 1.08 | <50th | 0.938 | <50th |
| NATA* Cancer Risk (lifetime risk per million) | 25 | 39 | 18 | 39 | <50th | 40 | <50th |
| NATA* Respiratory Hazard Index | 0.71 | 1.8 | 31 | 2.8 | <50th | 1.8 | <50th |
| Traffic Proximity and Volume (daily traffic count/distance to road) | 0 | 220 | 17 | 380 | 2 | 800 | 2 |
| Lead Paint Indicator (% Pre-1960 Housing) | 0.095 | 0.083 | 77 | 0.23 | 40 | 0.29 | 36 |
| Superfund Proximity (site count/km distance) | 0.0033 | 0.088 | 18 | 0.12 | 3 | 0.12 | 1 |
| RMP Proximity (facility count/km distance) | 0.0089 | 0.49 | 9 | 0.83 | 2 | 0.72 | 0 |
| Hazardous Waste Proximity (facility count/km distance) | 0.0074 | 0.41 | 10 | 1.5 | 0 | 4.3 | 0 |
| Wastewater Discharge Indicator (toxicity-weighted concentration/m distance) | N/A | N/A | N/A | 0.038 | N/A | 30 | N/A |
| Demographic Indicators | | | | | | | |
| Demographic Index | 51% | 32% | 84 | 29% | 89 | 36% | 74 |
| Minority Population | 56% | 38% | 78 | 27% | 90 | 38% | 71 |
| Low Income Population | 46% | 25% | 88 | 32% | 77 | 34% | 73 |
| Linguistically Isolated Population | 1% | 2% | 58 | 3% | 51 | 4% | 48 |
| Population With Less Than High School Education | 4% | 8% | 34 | 10% | 29 | 13% | 23 |
| Population Under 5 years of age | 8% | 7% | 56 | 6% | 68 | 6% | 69 |
| Population over 64 years of age | 15% | 9% | 86 | 14% | 62 | 14% | 61 |

* The National-Scale Air Toxics Assessment (NATA) is EPA's ongoing, comprehensive evaluation of air toxics in the United States. EPA developed the NATA to prioritize air toxics, emission sources, and locations of interest for further study. It is important to remember that NATA provides broad estimates of health risks over geographic areas of the country, not definitive risks to specific individuals or locations. More information on the NATA analysis can be found at: <https://www.epa.gov/national-air-toxics-assessment>.



ENVIRONMENTAL STATUTE

CLEAN WATER ACT, SECTION 104(B) (3); SAFE DRINKING WATER ACT, SECTION 1442(B) (3); SOLID WASTE DISPOSAL ACT, SECTION 8001(A)

List of Other Factors to qualify for Special Considerations:
 Projects addressing Disaster Resiliency and Emergency Preparedness

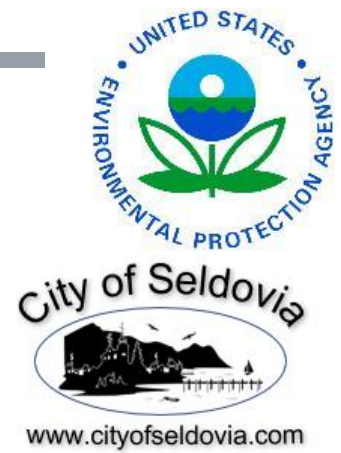


Anchorage Museum of History & Art. Library & Archives.



Projects addressing Disaster Resiliency and Emergency Preparedness

During an emergency the majority of Seldovias residence evacuate to the school. In the event of a natural disaster Seldovias remote location and aged infrastructure could mean long wait times for help with no drinking water, limited shelter, and no way to dispose of waste.



ALASKA NATIVE
TRIBAL HEALTH
CONSORTIUM

Originally had three partners in the project (Ground Truth Trekking, SVT Health and Wellness, and Seldovia Volunteer Fire and EMS.) Thanks to other departments in SVT partners grew, allowing the project to grow.

CHALLENGES

- The only real challenge faced during the life of the project was the appearance of COVID-19.
- At the beginning of the project covid-19 arose and health mandates quickly escalated. Community meetings could no longer be held in person with distance requirements met.
- The Seldovia Village Tribe adapted quickly to online video applications and was able to continue the meetings virtually. There was no drop in attendance when meetings went virtual.



SUCCESSSES

- Partners
- Meetings
- Community growth
- Agency growth



Meeting List

- Epidemics/Pandemics
- Household Emergency Plan
- Geologic Hazards
- Fire Hazards
- Emergency Responses
- Emergency Power/ Generators
- Disaster Planning
- Emergency Food
- Safe Drinking Water





EPA Environmental Justice Small Grant Funding



“Understanding Environmental Pollution in the Keweenaw Bay Indian Community” EJ Project

Presented by Jane Kahkonen, Air Quality Specialist, Keweenaw Bay Indian Community
&
Aubrey Arain, Industrial Hygiene Program Specialist, Oakland University

Who We Are

The Keweenaw Bay Ojibwe were signatories to the 1842 Treaty of La Pointe

The Keweenaw Bay Indian Community (KBIC) was federally recognized in 1934

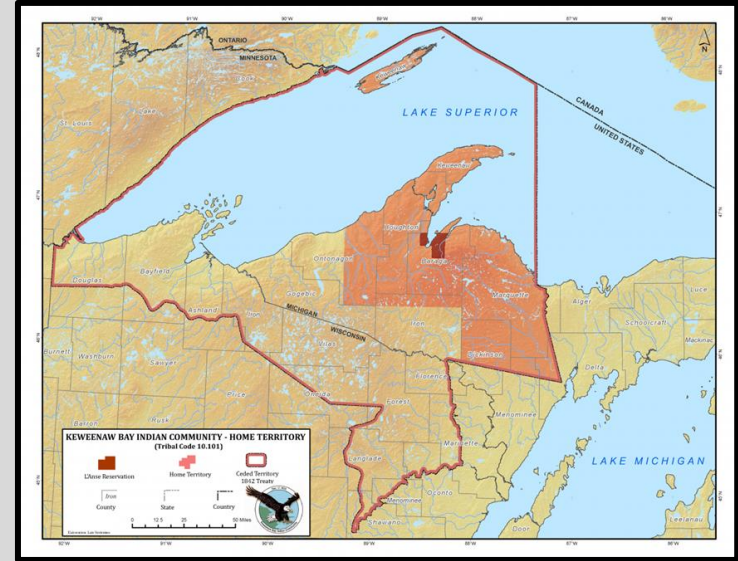
Over 4,000 enrolled members

Obligation to care for the community in which we live

Protection of the land, air, water and more - than-human – relatives that share our environment

Dependence on fish, plants, and animals for sustenance and cultural practices

Sustainability for the next 7 Generations



Developing Statement of Need for Our Concerns

#1 Electric Generating Biomass Plant

Located ½ mile from reservation boundary

Toxic Air Emissions

Plastic Pellets, Tires, & Treated Railroad Ties used as supplemental fuel

Deposition of air contaminants on land and water

Bio-accumulation of toxins

Respiratory problems, cancer, and other health issues



#2 Legacy Pollution From Copper Mining

Mercury and heavy metals

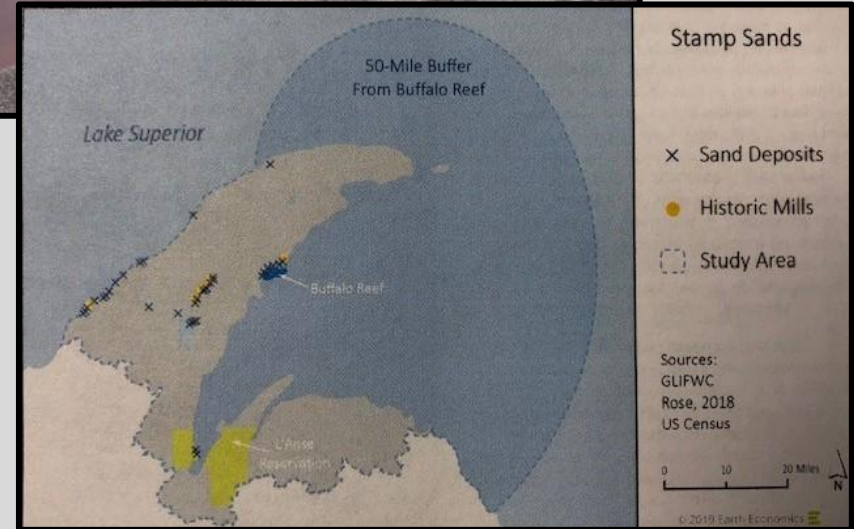
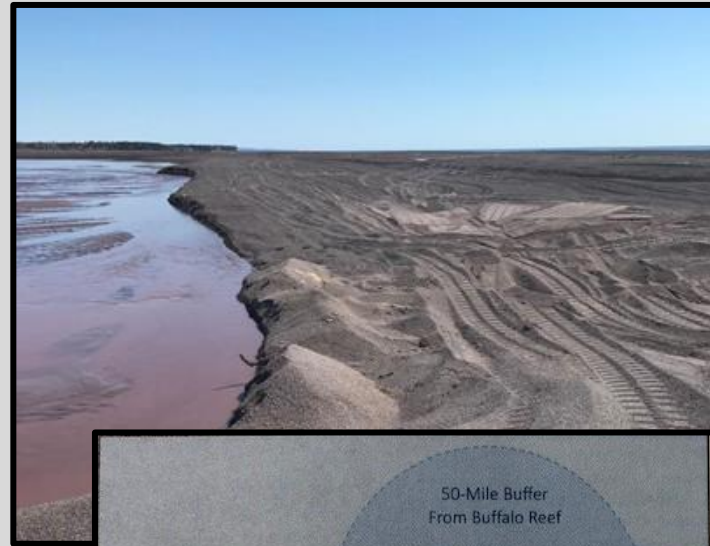
Bio-magnification of toxins

Need for Fish Consumption Advisories

Loss of fish spawning habitat

Ability of stamp sand and dust to travel great distances

Respiratory problems, cancer, and other health issues



Outcomes and Results

Assemble data to oppose the current methodologies used for setting maximum toxic exposure risks

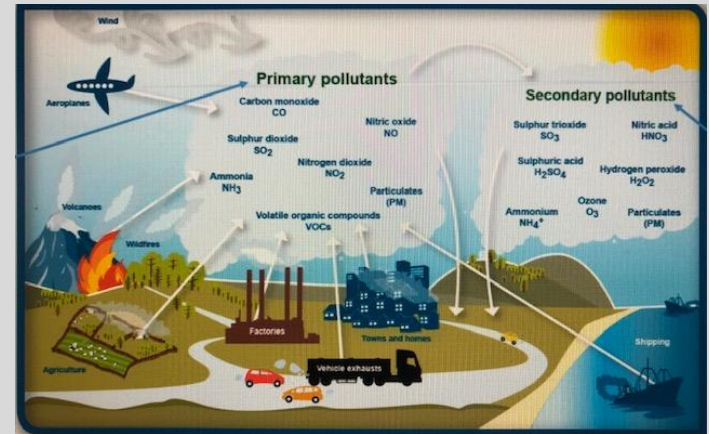
Analyze minimum risk level estimates based on tribal consumption rates of local fish, game, and plants

Create toxic risk equations indicative of KBIC population and their reliance on natural resources

Develop Health Risk Assessment that reflects KBIC tribal community - NOT general population

Deliverables include

- *A scientific report summarizing literature and risk assessment findings.
- *Educational resources targeted for community members.
- *An educational summit for community members to discuss findings.



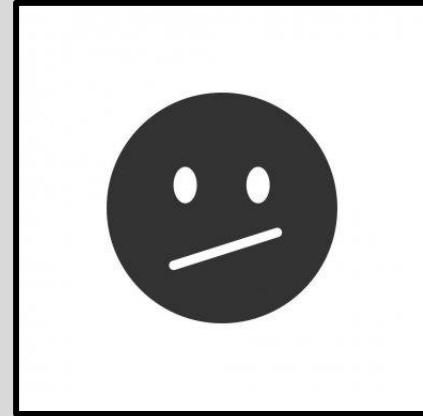
Lessons Learned & Problems to Date

Be prepared for extended wait time for award notification

Expect delayed processing of actual award funding

Anticipate delays of work plan start dates

Develop good communications with project partners and contractors



Miigwech and Thank You





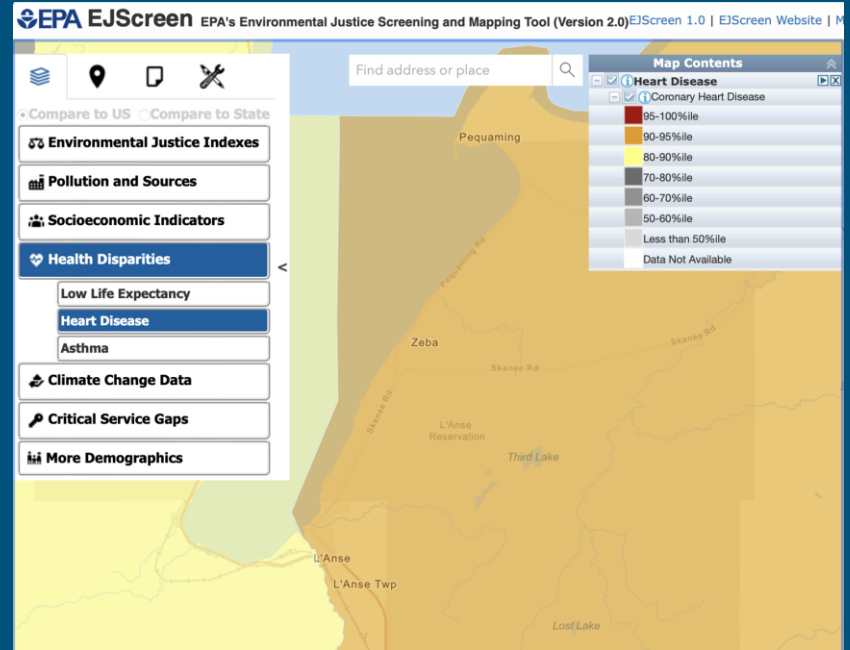
EPA EJSCREEN – DEMONSTRATION

EJ Webinar Series for Tribes and
Indigenous Peoples



EJSCREEN – EPA'S EJ SCREENING & MAPPING TOOL

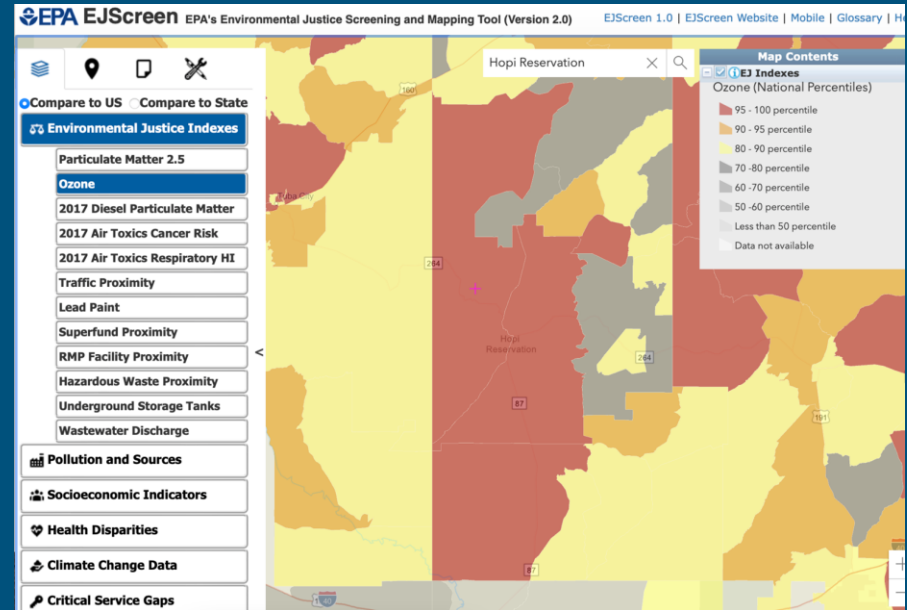
- EJSCREEN combines environmental and demographic data to highlight areas with potential EJ concerns
- Accessible to anyone on the internet, including a new mobile version of the tool
- Updated version, EJSCREEN 2.0, provides further insight into EJ concerns with improved features and additional data



EJSCREEN's Health Disparities, Heart Disease Data for the L'Anse Reservation

EJSCREEN – INDICATORS & INDEXES

- EJSCREEN includes:
 - 12 environmental indicators
 - 7 demographic indicators
 - 12 EJ indexes
- Each EJ Index combines the demographic factors with a single environmental factor



EJSCREEN's Ozone EJ Indicator for the Hopi Reservation

EJ INDEXES - ENVIRONMENTAL & DEMOGRAPHIC INDICATORS

● 12 Environmental Indicators

- Particulate Matter 2.5
- Ozone
- Diesel Particulate Matter
- Air Toxics Cancer Risk
- Air Toxics Respiratory Hazard Index
- Traffic Proximity
- Lead Paint
- Risk Management Plan (RMP) Facility Proximity
- Hazardous Waste Proximity
- Superfund Proximity
- Underground Storage Tanks (UST)
- Leaking UST (LUST)
- Wastewater Discharge

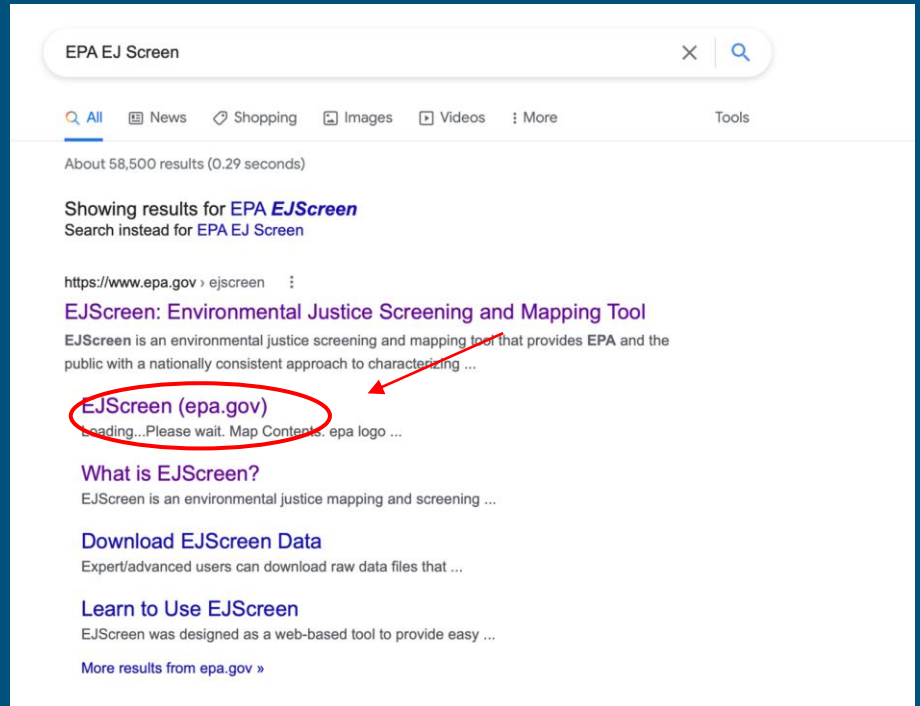
● 7 Demographic Indicators

- People of color:
- Low income:
- Unemployment rate
- Linguistic isolation
- Less than high school education
- Under age 5
- Over age 64

EJSCREEN includes a “Demographic Index” based on the average of the low income and people of color indicators

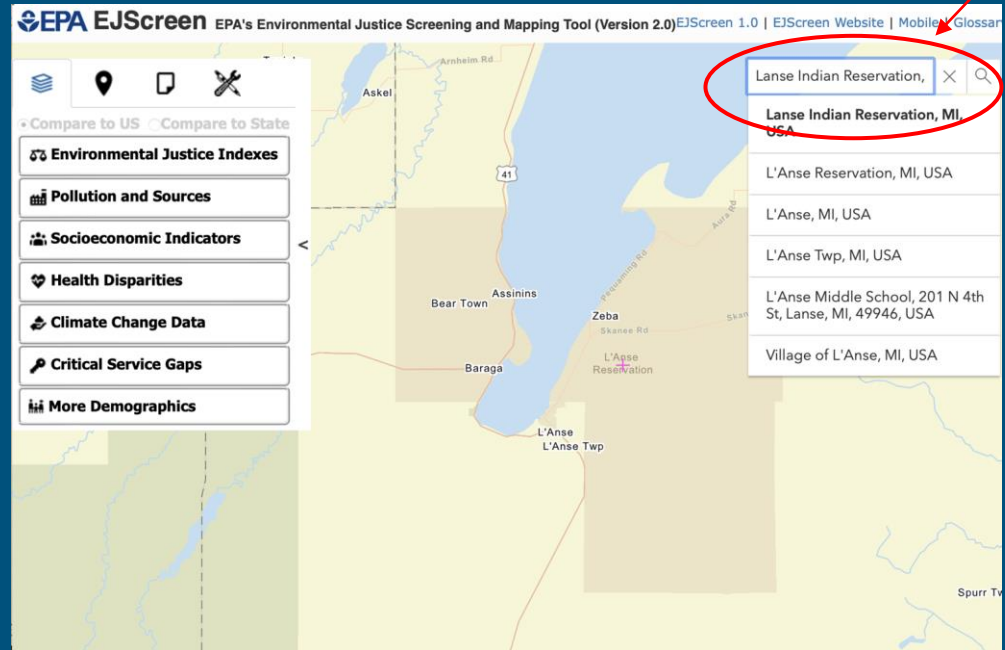
EJSCREEN DEMO – KEWEENAW BAY INDIAN COMMUNITY

1. On your web browser, look up:
“EPA EJScreen”
2. Click on: “EJScreen (epa.gov)”



EJSCREEN DEMO – KEWEENAW BAY INDIAN COMMUNITY

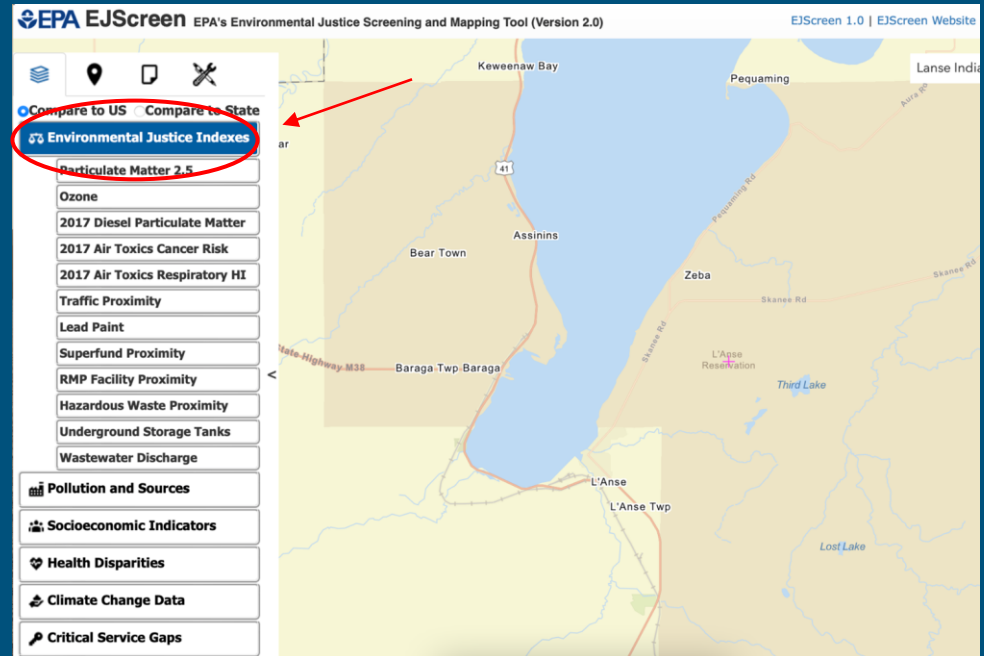
3. At the top right of the page,
locate the search bar
4. Type in the search bar:
“L'Anse Indian Reservation, MI”



The screenshot displays the EPA EJScreen interface. At the top right, there is a search bar containing the text "Lanse Indian Reservation,". A red circle highlights this search bar and the first dropdown result, "Lanse Indian Reservation, MI, USA". The dropdown menu also lists other results: "L'Anse Reservation, MI, USA", "L'Anse, MI, USA", "L'Anse Twp, MI, USA", "L'Anse Middle School, 201 N 4th St, Lanse, MI, 49946, USA", and "Village of L'Anse, MI, USA". On the left side of the interface, there is a sidebar with various data categories: Environmental Justice Indexes, Pollution and Sources, Socioeconomic Indicators, Health Disparities, Climate Change Data, Critical Service Gaps, and More Demographics. The main area shows a map of the L'Anse Indian Reservation area, with labels for "L'Anse Reservation" and "L'Anse Twp".

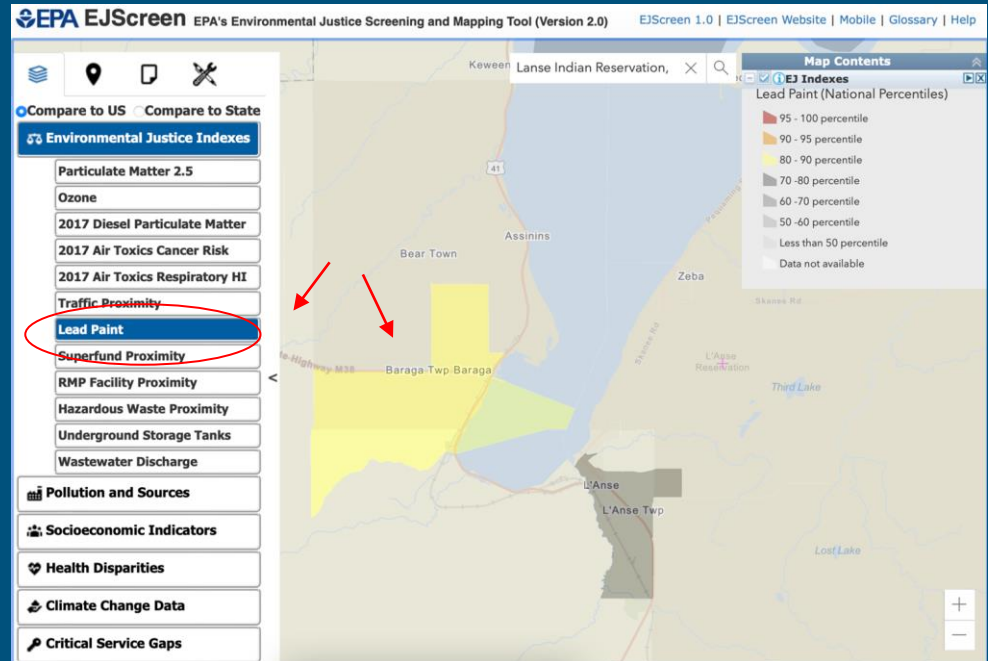
EJSCREEN DEMO – KEWEENAW BAY INDIAN COMMUNITY

5. At the top left, locate and click on the “Environmental Justice Indexes” tab
6. A drop down menu will expand, listing the 12 EJ indexes



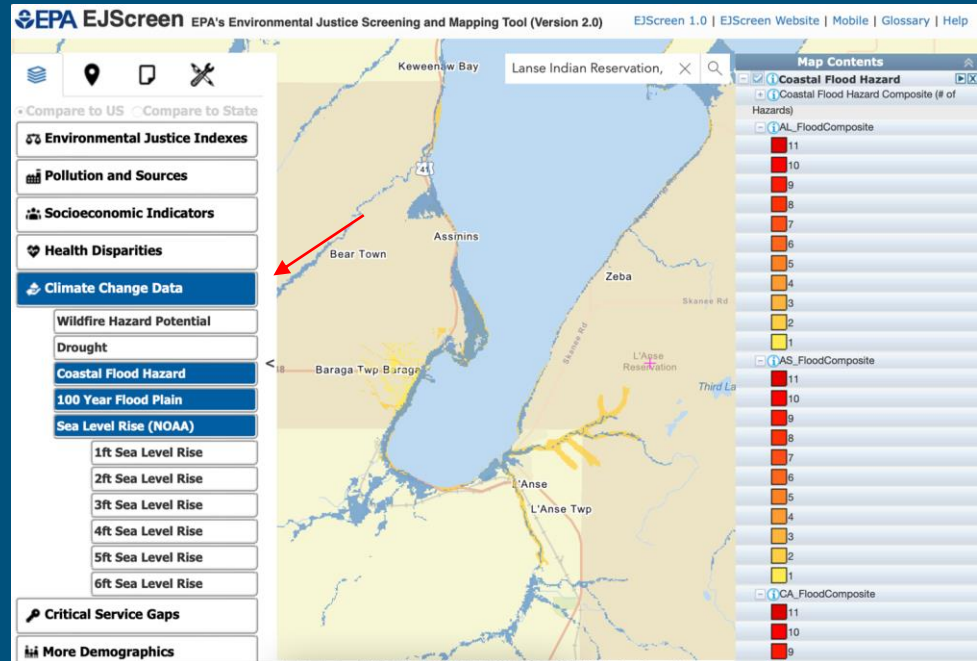
EJSCREEN DEMO – KEWEENAW BAY INDIAN COMMUNITY

7. Click on any of the EJ indexes
(such as “Lead Paint” which is
shown in the picture to the right”)



EJSCREEN DEMO – KEWEENAW BAY INDIAN COMMUNITY

8. To examine additional data within the area, explore the other tabs such as “Health Disparities”, “Climate Change Data”, “Critical Service Gaps”, “Climate Change Disparities”, “Climate Change Data”, and “Critical Service Gaps”



EJScreen Reports

- American Community Survey (ACS) Report provides a report with US Census Bureau data in PDF format
- Explore Reports EJ Indexes, Pollution and Sources, and Socioeconomic Indicators.



EJSCREEN ACS Summary Report

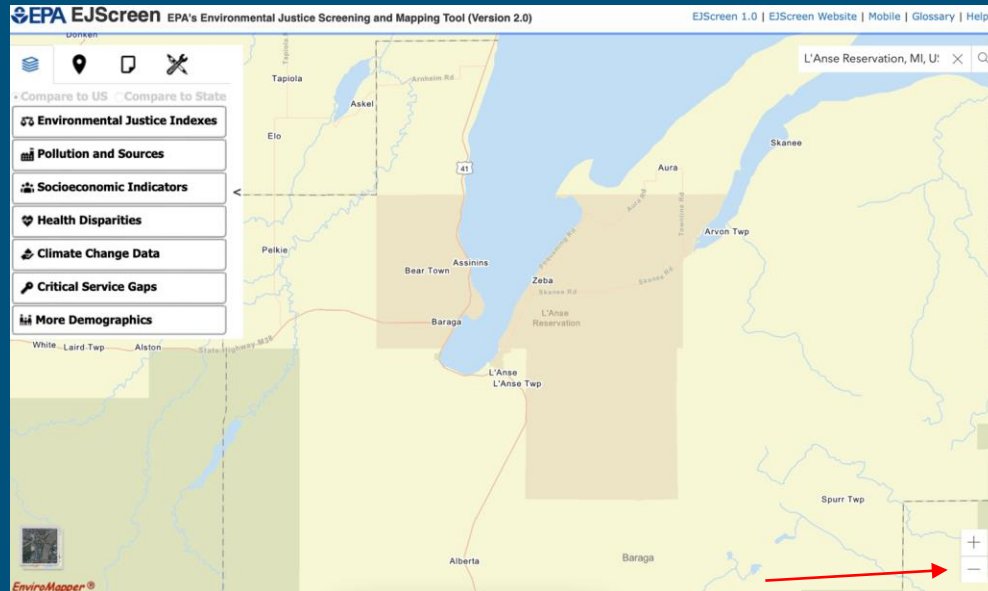
Location: User-specified polygon location
 Ring (buffer): 0-miles radius
 Description:

| Summary of ACS Estimates | 2015 - 2019 |
|--------------------------------------|-------------|
| Population | 5,214 |
| Population Density (per sq. mile) | 56 |
| People of Color Population | 1,948 |
| % People of Color Population | 37% |
| Households | 1,611 |
| Housing Units | 2,217 |
| Housing Units Built Before 1950 | 586 |
| Per Capita Income | 25,294 |
| Land Area (sq. miles) (Source: SF1) | 93.89 |
| % Land Area | 84% |
| Water Area (sq. miles) (Source: SF1) | 18.38 |
| % Water Area | 16% |

| | 2015 - 2019 ACS Estimates | Percent | MOE (±) |
|--|---------------------------|---------|---------|
| Population by Race | | | |
| Total | 5,214 | 100% | 187 |
| Population Reporting One Race | 4,819 | 92% | 474 |
| White | 3,310 | 63% | 148 |
| Black | 751 | 14% | 195 |
| American Indian | 694 | 13% | 89 |
| Asian | 30 | 1% | 13 |
| Pacific Islander | 5 | 0% | 10 |
| Some Other Race | 29 | 1% | 19 |
| Population Reporting Two or More Races | 394 | 8% | 64 |
| Total Hispanic Population | 96 | 2% | 29 |
| Total Non-Hispanic Population | 5,118 | | |
| White Alone | 3,266 | 63% | 148 |
| Black Alone | 751 | 14% | 195 |

EJSCREEN DEMO – KEWEENAW BAY INDIAN COMMUNITY

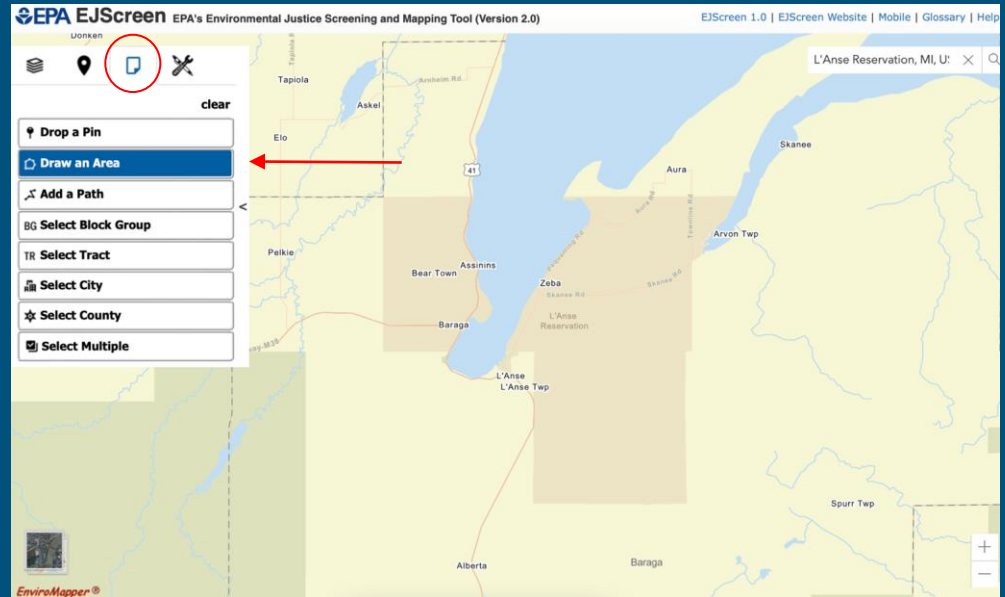
- To create a **Standard Report**, first, look at the bottom right of the page and locate the + and – signs
- Click on the – sign to zoom out, until you can view the entire L’Anse Reservation area



EJSCREEN DEMO – KEWEENAW BAY INDIAN COMMUNITY

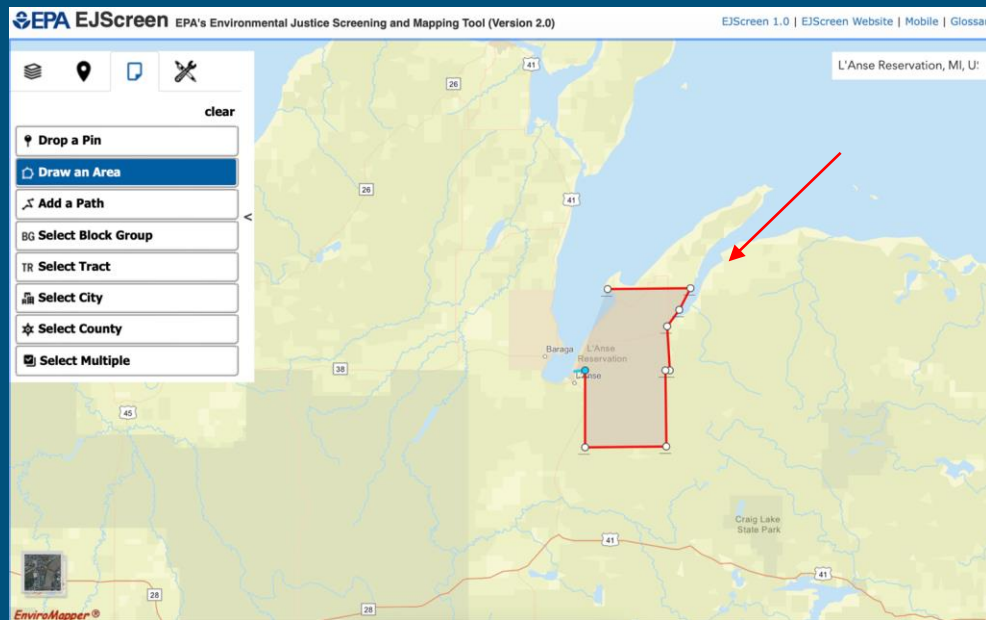
11. At the top left of the screen, locate the icons above the tabs. Click on the third icon from the left that looks like a paper with a fold.

12. Click on **Draw an Area**.



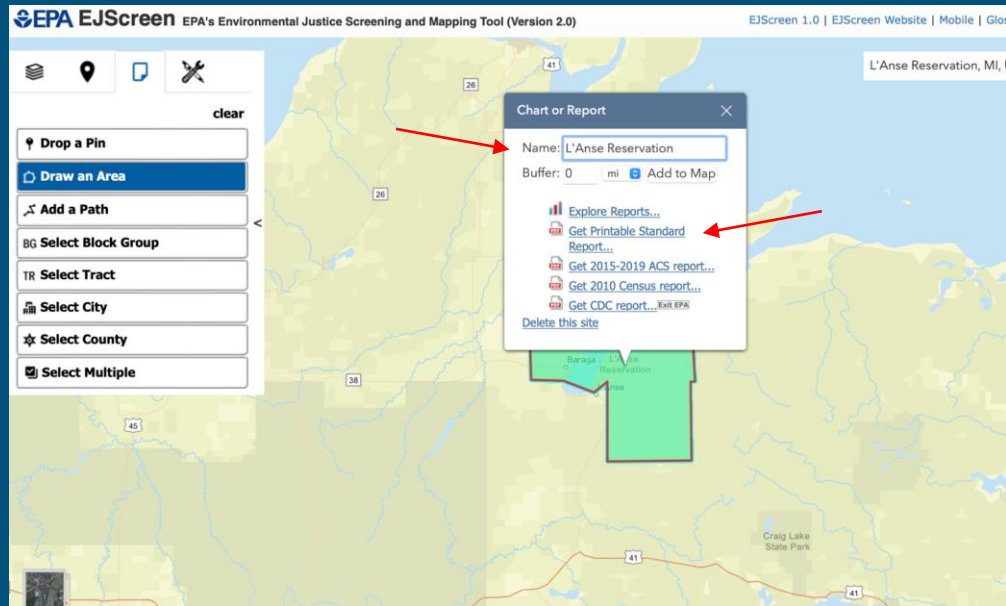
EJSCREEN DEMO – KEWEENAW BAY INDIAN COMMUNITY

13. Click on an edge of the L'Anse Reservation and continuously click around the edges until the entire area is selected.



EJSCREEN DEMO – KEWEENAW BAY INDIAN COMMUNITY

14. After completing the drawing, a pop up box will appear. In the Name box type “L’Anse Reservation”.
15. Generate a report by clicking on [Get Printable Report](#).



EJSCREEN DEMO – KEWEENAW BAY INDIAN COMMUNITY

16. After clicking on **Get Printable Report**. A separate tab will open with a 3 page Standard Report.

EPA EJSCREEN Report (Version 2.0) for the User Selected Area, MICHIGAN, EPA Region 5
Approximate Population: 4,793
Input Area (sq. miles): 109.67

| Selected Variable | Value | Rate | Rate to State | Rate to Region | Rate to Nation | USA Avg. | USA Percentile |
|---|-------|------|---------------|----------------|----------------|----------|----------------|
| Pollution and Sources | | | | | | | |
| Perennial Surface (2 Days) | 6.42 | 8.71 | 0.26 | 0.1 | 0.1 | 6.24 | 11 |
| Ground Water | 26.2 | 43.3 | 3 | 20.5 | 1 | 43.4 | 11 |
| 2002 Lead (Total Area Weighted) | 0.079 | 0.09 | 0 | 0.073 | 0.086 | 0.086 | 40 |
| 2002 Air Toxics Cancer Risk (Population-Weighted) | 12 | 29 | 3 | 24 | 0.089 | 18 | 40 |
| 2002 10+ Toxics Populations Q1* | 0.7 | 1.01 | 0.6 | 0.7 | 0.68 | 0.6 | 40 |
| Health Proximity (Low to High Concentration in Land) | 38 | 89 | 18 | 60 | 18 | 74 | 40 |
| Land Use (Low to High Concentration in Land) | 3.38 | 5.01 | 0.6 | 3.07 | 0.6 | 5.04 | 41 |
| Superfund Proximity (Low to High Concentration) | 0.029 | 0.10 | 7 | 0.10 | 10 | 0.10 | 50 |
| MSW Facility Proximity (Low to High Concentration) | 0.009 | 0.03 | 4 | 0.03 | 0 | 0.03 | 50 |
| Healthcare Waste Proximity (Low to High Concentration) | 0.049 | 1.1 | 3 | 1.0 | 1 | 1.0 | 7 |
| Landfills (Low to High Concentration) | 0.12 | 2.4 | 4 | 1.6 | 1.6 | 1.6 | 53 |
| Wastewater Treatment Facility Proximity (Low to High Concentration) | 7.007 | 0.47 | 7 | 0 | 0 | 1.0 | 5 |
| Demographic Indicators | | | | | | | |
| Demographic Index | 95% | 98% | 19 | 98% | 74 | 98% | 98 |
| Percent of Land | 31% | 30% | 10 | 30% | 70 | 30% | 44 |
| Low Income | 30% | 30% | 47 | 30% | 71 | 30% | 47 |
| Unemployment Rate | 4% | 4% | 60 | 4% | 47 | 4% | 44 |
| Linguistically Isolated | 0% | 2% | 44 | 2% | 46 | 0% | 40 |
| Low Test Year School Enrollment | 11% | 1% | 75 | 1% | 87 | 1% | 51 |
| Other Pop. | 0% | 0% | 41 | 0% | 36 | 0% | 36 |
| Other Pop. | 0% | 0% | 75 | 0% | 70 | 0% | 37 |

For additional information, see: www.epa.gov/ejscreen/faq.html

EPA EJSCREEN Report (Version 2.0) for the User Selected Area, MICHIGAN, EPA Region 5
Approximate Population: 4,793
Input Area (sq. miles): 109.67

Map showing the location of the User Selected Area (Keweenaw Bay Indian Community) in Michigan, EPA Region 5. The map displays the reservation boundary in green, surrounded by the surrounding county and state boundaries.

Site(s) Operating in EPA Region 5:

| | |
|---|---|
| Healthcare Waste Treatment, Storage, and Disposal Facilities (TSDF) | 0 |
|---|---|

EPA EJSCREEN Report (Version 2.0) for the User Selected Area, MICHIGAN, EPA Region 5
Approximate Population: 4,793
Input Area (sq. miles): 109.67

| Selected Variable | Rate | Rate to State | EPA Region Percentile | USA Percentile |
|--|------|---------------|-----------------------|----------------|
| Environmental Justice Indicators | | | | |
| EJ Index for Chronic | 77 | 77 | 77 | 41 |
| EJ Index for Particulate Matter (2.5) | 76 | 76 | 76 | 41 |
| EJ Index for Chronic | 77 | 77 | 77 | 41 |
| EJ Index for 2012 Diesel Particulate Matter* | 76 | 76 | 76 | 40 |
| EJ Index for 2012 Air Toxics Cancer Risk** | 76 | 76 | 76 | 40 |
| EJ Index for 2012 Air Toxics Populations Q1* | 77 | 76 | 77 | 40 |
| EJ Index for Traffic Proximity | 74 | 75 | 74 | 40 |
| EJ Index for Land Use | 71 | 71 | 71 | 41 |
| EJ Index for Superfund Proximity | 75 | 75 | 75 | 40 |
| EJ Index for MSW Facility Proximity | 74 | 74 | 74 | 40 |
| EJ Index for Healthcare Waste Proximity | 74 | 74 | 74 | 38 |
| EJ Index for Landfills Proximity | 76 | 76 | 76 | 40 |
| EJ Index for Wastewater Discharge | 73 | 69 | 73 | 40 |

EJ Index for the Selected Area Compared to All People's Backgrounds in the State/Region/Q1

Legend: EJ Index, State Percentile, Regional Percentile, Q1 Percentile

Visual example of an EJScreen Standard Report, not meant to represent the actual Standard Report for the L'Anse Reservation.

Questions and Answers Period & Evaluation

- Please type your questions in the chat box.
- We would appreciate your feedback on the webinar and ask that you complete the short online survey. Link posted in chat box: <https://forms.gle/F8urKrCqvbXeVWzj7>

Contacts

Michael Opheim, Environmental Coordinator, Seldovia Village Tribe
mopheim@svt.org

Stephen Payton, Environmental Assistant, Seldovia Village Tribe
spayton@svt.org

Jane Kahkonen, Air Quality Specialist, Environmental Health Section, Keweenaw Bay Indian Community
jkahkonen@kbic-nsn.gov

Aubrey Arain, Aubrey Arain
Industrial Hygiene Program Specialist, Cal Poly State University, Lecturer, Oakland University
aubrey.arain@gmail.com

Sarah Frederick, EJSG for Tribes Competition Lead, American Indian Environmental Office, U.S. EPA,
frederick.sarah@epa.gov

Jacob Burney, Grants Manager, Office of Environmental Justice, U.S. EPA, burney.jacob@epa.gov

Marilyn Yang, EPA Intern
Office of Environmental Justice
marilyn1@terpmail.umd.edu

Danny Gogal, Tribal and Indigenous Peoples Program Manager, Office of Environmental Justice, U.S. EPA,
Gogal.Danny@epa.gov