



FOR IMMEDIATE RELEASE

Thursday, March 17, 2022

Media Contacts:

German Vigil – (202) 306-1668, german.vigil@dc.gov

Temporary Closures on Southbound South Capitol Street SW Eastbound Suitland Parkway, and Firth Sterling Ave. SE March 21 to March 28, 2022

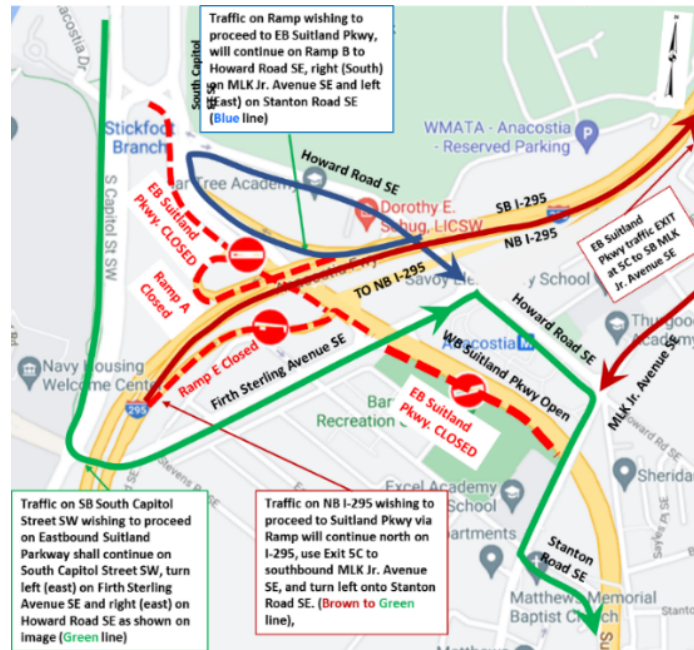
(Washington, D.C.) - The District Department of Transportation (DDOT) will temporarily close southbound South Capitol Street SW between Suitland Parkway and Firth Sterling Avenue SE nightly from 9:00 p.m. to 5:00 a.m. the following morning for roadway construction. When southbound South Capitol Street is closed, eastbound Suitland Parkway and southbound Firth Sterling Avenue will remain open to traffic. A marked detour will be in place during these closures.

Southbound South Capitol St SE Closure & Detour



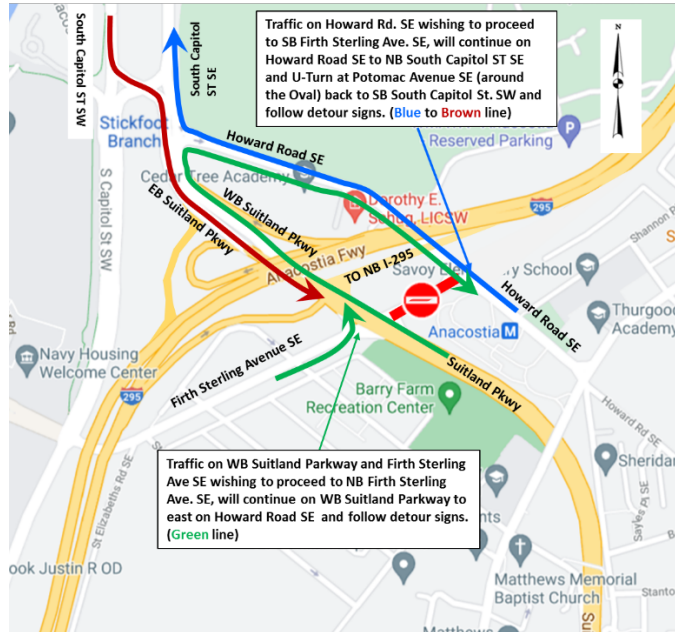
Eastbound Suitland Parkway from South Capitol Street SE to Martin Luther King Jr. Avenue SE will be closed on Saturday, March 26 from 4:00 a.m. to 8:00 p.m. for re-construction. This will include the closure of (1) Exit 4A from southbound I-295 to outbound Suitland Parkway and (2) Exit 4 from northbound I-295 to Suitland Parkway. When eastbound Suitland Parkway is closed, Firth Sterling Avenue SE and South Capitol Street SE will remain open to all traffic. In the event of weather or other unforeseen issues the Suitland Parkway closure will occur on Sunday, March 27. Marked detours will be in place during these closures.

Eastbound Suitland Parkway Closure & Detour



Firth Sterling Avenue SE between Suitland Parkway and Howard Road SE will be closed on Saturday, March 26 and Sunday, March 27 from 7:00 a.m. to 7:00 p.m. for re-construction. When Firth Sterling Avenue SE is closed, Suitland Parkway and South Capitol Street will remain open to traffic. Marked detour will be in place during these closures.

Firth Sterling Avenue SE Closure & Detour



These closures are necessary for construction activities associated with the South Capitol Street Corridor Project, which includes construction of the New Frederick Douglass Memorial Bridge and the reconstruction of the I-295/Suitland Parkway interchange.

Please observe the posted speed limit and proceed through the construction area with caution. Pedestrians and cyclists are advised to stay alert and follow signage when traveling through this area.

For more information about DDOT’s ongoing efforts to improve the 295 corridors, visit www.improving295dc.com.

###

The District Department of Transportation's mission is to equitably deliver a safe, sustainable, and reliable multimodal transportation network for all residents and visitors of the District of Columbia.

Follow us on [Twitter](#) for transportation-related updates and more, like us on [Facebook](#), and follow us on [Instagram](#). Visit the website at www.ddot.dc.gov. Visit goDCgo.com for more information on transportation options in the District.