

ISC CENSUS AND ANNUAL REPORT 2024

ISC SCHOOLS: LOCATION, TYPE, STRUCTURE AND SIZE

PUPIL NUMBERS

REGIONAL DIFFERENCES

SINGLE-SEX AND CO-EDUCATION

BOARDING

NEW PUPILS

SEND

ETHNICITY

INTERNATIONAL FOOTPRINT: NON-BRITISH PUPILS AND OVERSEAS CAMPUSES

SCHOOL FEES

BURSARIES AND SCHOLARSHIPS

PUBLIC BENEFIT

SCHOOL GROUPINGS

TEACHING STAFF

UNIVERSITY ENTRANCE

ISC EXAM RESULTS



1974

50th anniversary

2024

This report is based on a survey carried out in January 2024. All 1,411 schools in UK membership of the constituent associations of ISC ("ISC schools") completed the survey.

Appendix One gives a snapshot of ISC schools as they were in January 2024. Appendix Two shows comparative figures for the schools that completed the Census in both 2023 and 2024 and is therefore the best guide for annual change.

ISC's constituent associations are: the Association of Governing Bodies of Independent Schools (AGBIS), the Girls' Schools Association (GSA), the Heads' Conference (HMC), the Independent Association of Prep Schools (IAPS), the Independent Schools Association (ISA), the Independent Schools' Bursars Association (ISBA) and the Society of Heads (SofH).

Four associations are affiliate members of ISC: the Council of British International Schools (COBIS), the Boarding Schools' Association (BSA), the Scottish Council of Independent Schools (SCIS) and the Welsh Independent Schools Council (WISC).

The ISC Research and Data Team would like to thank all participating schools for the considerable time taken to complete the Census and to check returns, particularly during the busy start of the spring term and when other Census completions are required.

ISC Research and Data Team

Jonathan Parkes (Head of Research and Data)

Danny Chan

Shun-Yue Chan

William Enobun

Design and layout: Tom Forge tom@designforge.ink

www.DesignForge.ink

Printing: Lazervision Ltd, Kent, TN8 6EL

Foreword

The ISC's first Census, published in 1974, was a brief document. Five pages long, it captured data in just four areas. As we mark the fiftieth anniversary of ISC and therefore of the Census, you need only look at the size of this booklet – more than 10 times the length of its earliest predecessor – to see how far the Census, and indeed independent education, has come.

There is much to celebrate about independent schools over the past half-century. They are some of the best schools in the world and, over the past twenty years, this fact has encouraged hundreds of thousands of excellent pupils to come to Britain to experience this for themselves. Some of our schools are quite old, outdating state education in some cases by centuries. With age has come knowledge of what works and, sometimes, the development of the distinctive traditions and personality of each school. Of course, our schools have evolved with changing demands, not least in terms of their academic excellence (not a priority in the early days). Britain's independent schools are one of the best things about this country.

2024 brings a watershed moment for independent education. As we look back on 50 years of ISC, we recognise various times when schools needed to be fleet of foot to adapt to growing political and economic headwinds. This is another such time: the effects of the latest policy threat are already being felt and are reflected throughout the Census.

Two significant economic factors have impacted the sector recently. Firstly, the UK has been passing through a period of historically high inflation. In April 2023, when most fee increases would have been decided, inflation stood at 8.7%. Secondly, schools were expecting employer contributions in the Teachers' Pension Scheme to increase significantly; though they did not then know by how much, they later discovered costs would increase by a fifth for participating schools. An average fee increase of 8.0% reflects these difficult circumstances, along with schools' persistence in keeping fee increases as low as they can.

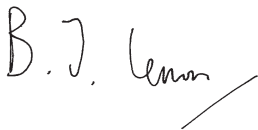
In the political forum, schools' main concern will be what Labour's VAT policy might mean for pupil recruitment and retention. A like-for-like analysis demonstrates a fall in new pupil recruitment of 2.7% since last year, and headteachers report that the spectre of VAT is looming large in parents' minds. This fall in new pupil numbers should not be a surprise to those who have kept a keen eye on the trends. A pupil bulge has made its way through the school system, but independent school numbers have not been rising to the same extent, leading to a decline in the proportion of

children educated in independent schools from 7% to 6%. It is possible that a sharp increase in fees caused by VAT, when combined with the economic factors above, will provide a far more acute shock to the system.

However, amid the gloom, there are also statistics to celebrate. Despite the tough circumstances, fee assistance is now at a record high for the sector, and once again the rise in the amount of fee assistance available across the sector has outpaced average fee rises. And the number of partnerships between state and independent schools has once again increased. This clearly demonstrates that bursaries, scholarships and partnership working are not a nice-to-have for our schools, but are fundamental to their core purpose.

Schools have also been providing a record amount of support for students with SEND. The number of students receiving SEND support has increased by 8% since last year, and over 100,000 students in ISC schools now receive some kind of additional support despite not being in receipt of an EHCP. This speaks to independent schools' dedication to not just providing generally excellent education and academic standards, but the right education and support for every child.

Although much has changed between the first ISC Census in 1974 and today, what remains the same is the potential for independent schools to innovate, to take risks and to develop new approaches that can go on to benefit children in all schools. We would be foolish indeed to risk the health of any part of education. The sector is an ecosystem: we need to encourage all to thrive. Only then will we move closer to our shared goal of a truly great education for every child.



Barnaby Lenon, Chairman
Independent Schools Council

Executive Summary

1. STABLE PUPIL NUMBERS AT INDEPENDENT SCHOOLS

- There are now 556,551 pupils at 1,411 ISC member schools. There has been an increase in the number of schools from last year when there were 554,243 pupils at 1,395 schools.
- At the 1,356 schools completing the Census in both 2023 and 2024, pupil numbers have decreased slightly by 0.1%.
- 107,259 pupils are new to their school in the current academic year, a decrease from 110,211 in 2023. Looking just at schools who completed the Census in both 2023 and 2024, the number of new pupils has decreased by 2,939 or 2.7%.
- Most ISC schools are small – half of schools have fewer than 285 pupils and one quarter of schools have fewer than 153 pupils. Only 97 ISC schools (7%) have 1,000 pupils or more.
- 681 schools stated that they had a religious affiliation or ethos. While most of these have a Christian character, the sector also provides for a range of faiths, including Muslim and Jewish schools.
- Over 4 out of 10 pupils in ISC schools are from a minority ethnic background. The proportion of pupils who are from a UK minority ethnic background continues to increase, showing that ISC schools reflect the overall diversity of the UK school population. In 2022, 39.6% of pupils identified as UK minority ethnic, whereas in 2023, the proportion has risen to 41.7%.
- 111,154 pupils are identified as having SEND, equating to 1 in 5 of all pupils, an increase of 8% from last year.
- 62,708 non-British pupils attend ISC schools this year, comprising 11.3% of all ISC pupils.
- 2,055 pupils in ISC schools are from Ukraine. 750 of these pupils have both parents remaining in Ukraine, and a quarter are new to ISC schools this academic year.

2. FEE INCREASES REFLECT AN INFLATIONARY ECONOMIC ENVIRONMENT AND ADDITIONAL COSTS

- ISC schools set fees during a period of historically high inflation and with the cost of the Teachers' Pension Scheme expected to increase. This year, the average fee increase is 8.0%, similar to government figures of inflation at the time schools made fee decisions for the coming year.
- The average day school fee has increased 8.0%, with the majority of day schools charging between £3,000 and £6,000 per term.
- Fee assistance worth over £1.4bn was provided this year, an increase of 10.2%.
- Of this fee assistance, £1.1bn was provided directly by schools, of which over £500m was means-tested.
- Over a third of all ISC pupils receive some type of fee assistance.
- The average means-tested bursary was worth £12,909 per annum, an increase of 9.3% compared with last year, showing a continuing trend in schools to support more disadvantaged families in accessing high-quality education.
- 9,328 pupils paid no fees at all, either via a full bursary or a combination of a bursary and scholarship(s).

3. STABILITY IN THE BOARDING SECTOR

- There were 65,649 pupils boarding on the day of the Census – 18th January 2024. This represents 11.8% of all pupils in ISC schools and a small decrease of 676 boarders compared with 2023.
- If we consider pupils registered to board at any point during the academic year 2023/24, there were 69,981 boarders.

4. ISC SCHOOLS ARE INCREASING THEIR STATE SCHOOL PARTNERSHIP ACTIVITIES

- ISC schools reported 9,248 partnerships in the calendar year 2023, an increase from 8,793 last year. These activities include helping sixth-form pupils from state schools apply to university, sharing facilities, serving as a state school governor, and seconding teaching staff to state schools.
- 1,068 ISC schools reported operating at least one partnership with a local state school, an increase from 1,043 last year.
- Beyond partnerships with state schools, between £9.9 and £16.0m was raised for charities at ISC schools this year and 935 ISC schools organised volunteering opportunities for their staff and / or pupils.

5. MOST SIXTH FORM LEAVERS FROM ISC SCHOOLS STUDY AT HIGHLY RANKED UNIVERSITIES

- 90% of Year 13 ISC pupils continue to higher education in the UK or overseas.
- 51% of ISC pupils who enter UK higher education attend one of the “Top 25” group of universities as defined by the Sunday Times Good University Guide.
- 4% of ISC pupils entering UK higher education attend either Oxford or Cambridge.
- 7% of ISC pupils who enter higher education choose to attend an overseas university. Universities in the USA are the most popular, attracting 48% of this set of pupils. Last year, pupils went on to 616 different overseas universities in 58 different countries.

6. UK INDEPENDENT SCHOOLS ARE INCREASING THEIR INTERNATIONAL PRESENCE

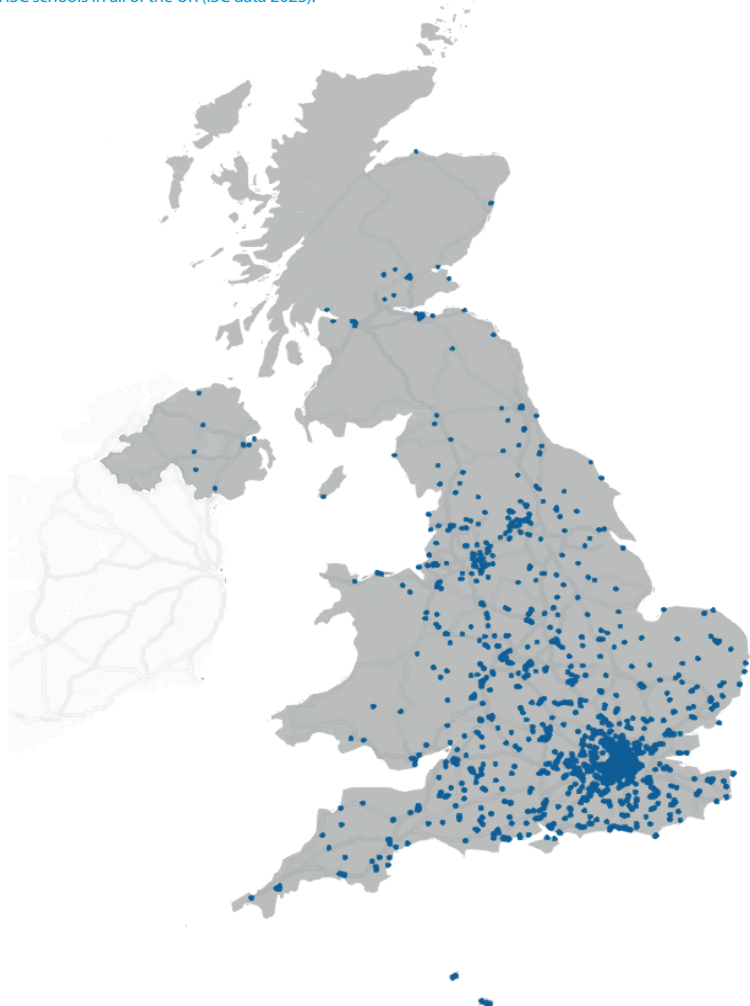
- ISC schools operate 129 campuses overseas, educating over 93,257 pupils. This is an increase from 107 campuses and over 71,500 pupils in 2023.
- There are 26,195 non-British pupils at ISC schools whose parents live overseas, an increase of 2.9% on 2023. Pupils from mainland China and Hong Kong comprise the largest groups with 5,824 and 5,075 pupils respectively.
- 36,513 non-British pupils have one or both parents living in the UK. 12,547 of these come from countries in the European Economic Area (EEA).
- This year, 429 teachers from outside the UK came to teach in ISC schools.

ISC Schools: Location, School Type, Structure and Size

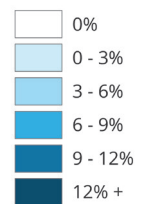
Fig 1. School location and pupil density

Map 1 relates to ISC schools only and covers all of the UK (ISC data 2023). Map 2 illustrates pupil density¹ for all independent schools, but is confined to England and Wales only (DfE and Welsh Government data 2023). Map 3 shows a detailed breakdown of pupil density¹ in London.

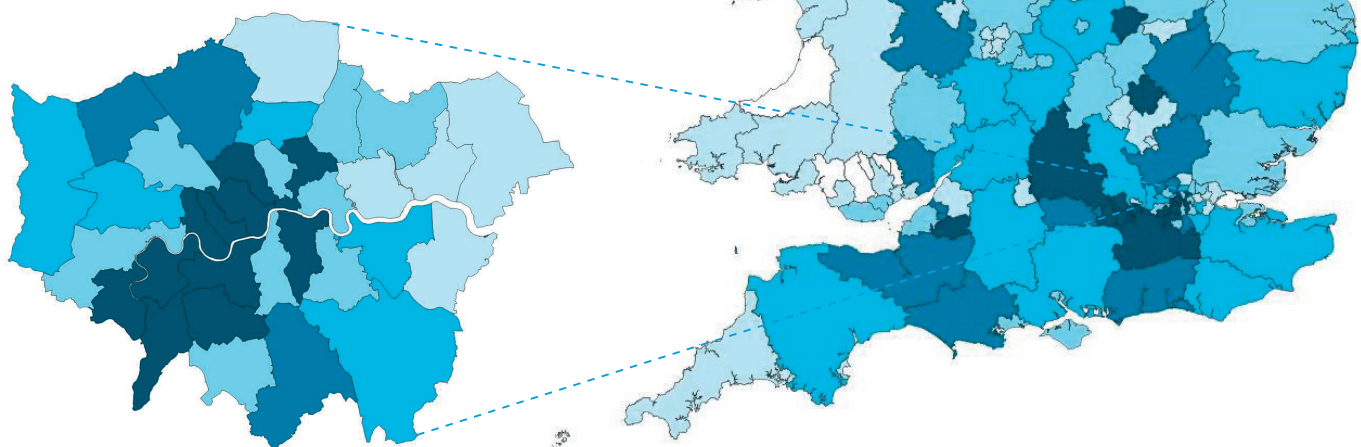
Map 1. ISC schools in all of the UK (ISC data 2023).



Map 2. This map shows the pupil density¹ in England and Wales broken down by local authority. Equivalent figures are not available for other parts of the UK.



Map 3. A detailed breakdown of pupil density¹ in London.



¹ Proportion of school-age children that are educated independently.

Fig 2. ISC school membership

This page illustrates the number of schools in ISC membership by school type. We have categorised the schools by their pupils' age, gender and whether they have day or boarding pupils. Each school is counted in one (and only one) category for each type. There is also a note at the bottom of this page explaining changes in membership between 2023 and 2024.

Age

1,411 total number of schools

272 Senior schools

Schools where all pupils are in Year 7 and above



509 Mixed-age schools

All other schools with mixed age ranges



630 Junior schools

Schools where all pupils are in Year 8 and below



630

Junior schools

272

Senior schools

509

Mixed-age schools

Gender

1,155 Co-ed schools

Schools that do not fall into either the category of boys' or girls' schools

155 Girls' schools

Schools with no boys in year groups above nursery

101 Boys' schools

Schools with no girls in year groups above nursery

1,155

Co-ed schools

101

Boys' schools

155

Girls' schools

Day/Boarding

973 Day schools

Schools that have no boarders

438 Schools with boarders

Schools that have at least one boarding pupil

973

Day schools

438

Boarding schools

Changing Membership

Since last year's Census, when 1,395 schools were in membership of the constituent associations: 30 schools left, 52 schools joined, 14 schools consolidated records with other ISC member schools to form 7 schools, and 1 school split to form 2 schools for census reporting. There are therefore 1,411 schools in membership this year, 1,356 of which participated in both the 2023 and 2024 Census. The figures from these 1,356 schools make up the tables in Appendix Two for an accurate comparison of the sector.

ISC Schools: Location, School Type, Structure and Size

The 1,411 schools in ISC membership can be categorised in several ways – location, age range, gender, day/boarding, and size. Examining these categories demonstrates the considerable variety of schools found in the independent schools sector.

Firstly, the maps in Figure 1 on page 6 show the geographical spread of ISC schools and the proportion of pupils educated in an independent school by local authority. Map 1 shows that the majority (52%) of ISC schools are located in the London, South Central, and South East ISC regions, educating 50% of all ISC pupils. Looking at all independent schools in England – including non-ISC member schools – 46% are located in these regions educating, 54% of all independent pupils¹. Map 2 illustrates that while local authorities with higher proportions of pupils in independent education tend to be found in these same regions, local authorities such as Newcastle upon Tyne, Salford, and Stockport also have at least 9% of pupils independently educated.

Figure 2 on page 7 categorises ISC schools in three different ways – by age range, by gender, and by day/boarding. It shows that nearly half (45%) of schools are junior schools; over four in five (82%) are co-educational schools; and over two thirds (69%) are day schools.

Figure 3 shows the most common school structures in terms of the range of year groups for senior, mixed-age and junior schools. While this diagram illustrates that many schools offer education to a common range of year groups, the fact that 138 schools cannot be shown as their structure is shared by fewer than 10 schools demonstrates that there is considerable variation within the sector.

Fig 3. ISC school structures

Figure 2 illustrates the numbers of ISC schools according to whether they are senior, mixed-age or junior. ISC schools cover a range of different year groups, sometimes making categorisation difficult. For completeness, Figure 3 shows the most common sets of year group ranges found within ISC schools. The blue bars show year group structure for each subcategory. The numbers in white indicate the number of schools that share that particular year group structure.

Senior¹

N/R	Y1	Y2	Y3	Y4	Y5	Y6	Y7	Y8	Y9	Y10	Y11	Y12	Y13
							154						
								45					
							23						
									14				
										11			

Other senior schools: 25⁴

Mixed-age²

N/R	Y1	Y2	Y3	Y4	Y5	Y6	Y7	Y8	Y9	Y10	Y11	Y12	Y13
	291												
	72												
		29											
		24											
			12										

Other mixed-age schools: 81⁴

Junior³

N/R	Y1	Y2	Y3	Y4	Y5	Y6	Y7	Y8	Y9	Y10	Y11	Y12	Y13
	375												
	192												
	19												
			12										

¹ Senior schools are defined as having all pupils in year 7 and above.

² Mixed-age schools are defined as all other ISC schools.

³ Junior schools are defined as having all pupils in year 8 or below.

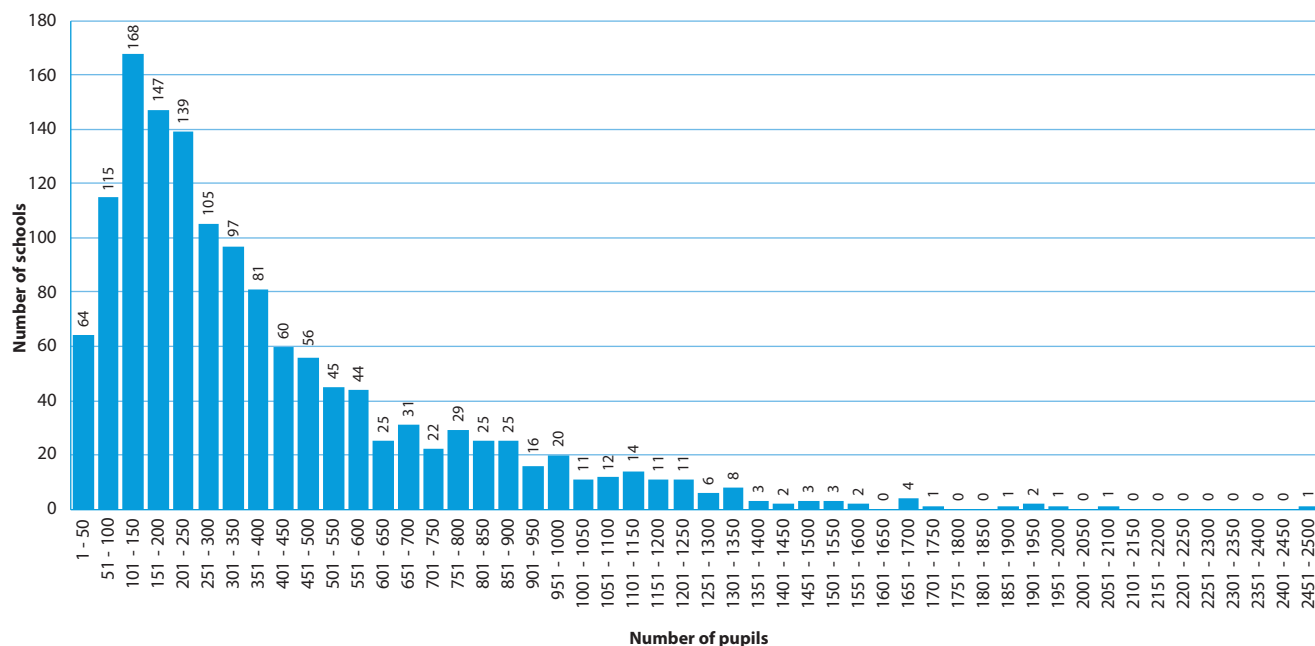
⁴ Some school structures are excluded from this illustration because their structure is shared by fewer than 10 schools: 138 schools are excluded – 25 senior schools, 81 mixed-age schools and 32 junior schools.

Finally, Figures 4 and 5 show the range of sizes of schools within the sector. Figure 4 shows that the mean school size is 394 and the median school size is 284. Breaking down school size by category, junior schools are likely to be significantly smaller than senior and mixed-range schools, boarding schools tend to be larger than day schools, and single-sex schools are likely to be larger than co-educational schools. Figure 5 illustrates that the majority of schools are small. One quarter of schools have fewer than 153 pupils, half of schools have fewer than 285 pupils, and three quarters of schools have fewer than 530 pupils. Only 7% of schools have 1,000 pupils or more.

Fig 4. Average school size by type of school

Type of school	Mean size	Median size
Senior	468	421
Mixed	550	470
Junior	237	214
Day schools	351	233
Schools with boarding pupils	492	408
Co-ed schools	377	267
Single-sex schools	474	374
Overall	394	284

Fig 5. Size of school

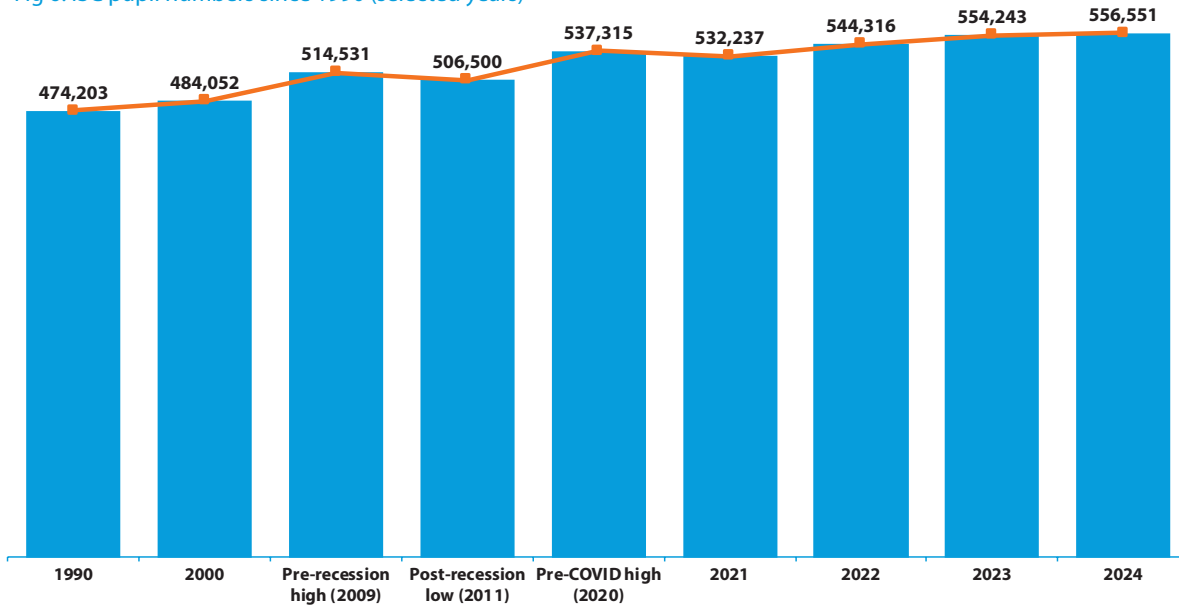


Pupil Numbers

There are now 556,551 pupils at ISC schools (as illustrated by Figure 6), as more schools are in membership this year.

If we consider only those schools in membership this year and last year, pupil numbers have decreased 0.1% since 2023.

Fig 6. ISC pupil numbers since 1990 (selected years)

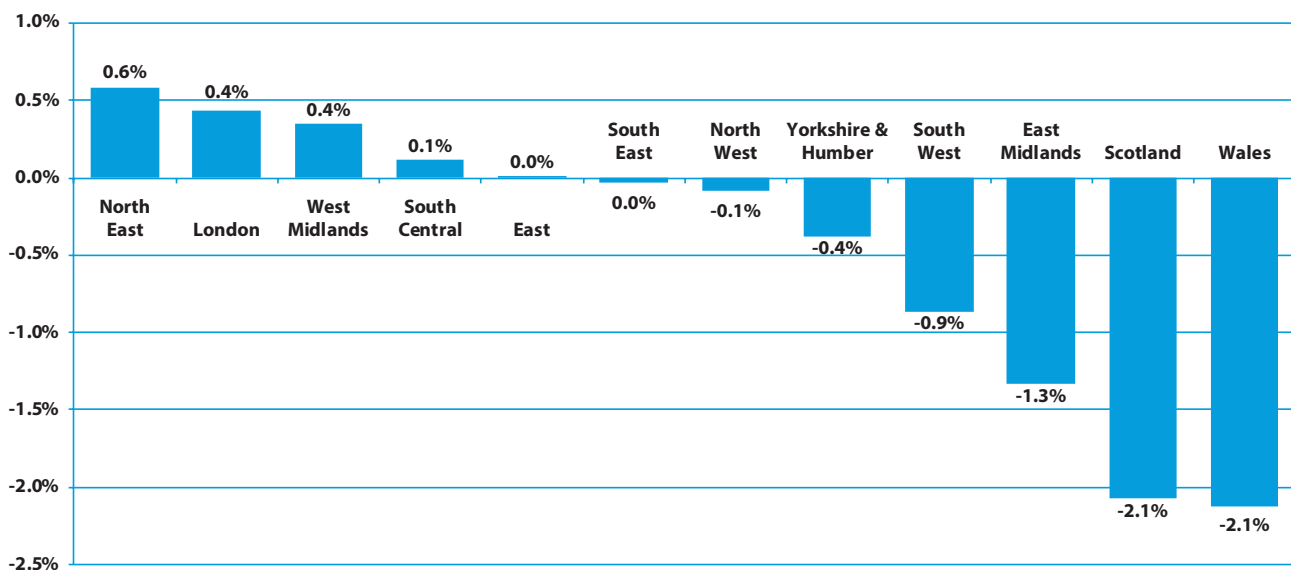


Pupil Numbers: By Region

Whilst overall pupil numbers have decreased on a like-for-like basis, the rate of change varies by region as illustrated by Figure 7. For example, pupil numbers in London have risen 0.4% whereas in Scotland there is a decrease of 2.1%. It is important to note, however, that smaller regions (in terms of prevalence of

ISC schools) are more susceptible to fluctuations in percentage change. For example, there are only 18 ISC schools in Wales and 17 schools in the North East that completed the Census in both 2023 and 2024. This year, these two regions have recorded the largest percentage increase and decrease respectively.

Fig 7. Annual change in pupil numbers by region (like-for-like)



Pupil Numbers: Single-sex and Co-education

The majority of ISC schools are co-educational: only 16% are single-sex in all year groups. A further 32 ISC schools are single-sex but have a co-educational nursery. This accounts for over a third of single-sex schools with a nursery. Therefore, the definition of a single-sex school in this Census is a school which is single-sex in all year groups above nursery. Using this definition, 18% of schools are single-sex, educating 121,467 pupils collectively.

Further, Figure 8 illustrates that there are many other schools that are predominately single-sex. Over 66% more girls are educated in single-sex schools than boys. However, co-educational schools have a higher proportion of boys, with 54% of pupils being male in these schools.

Fig 8. Girls as a percentage of all pupils

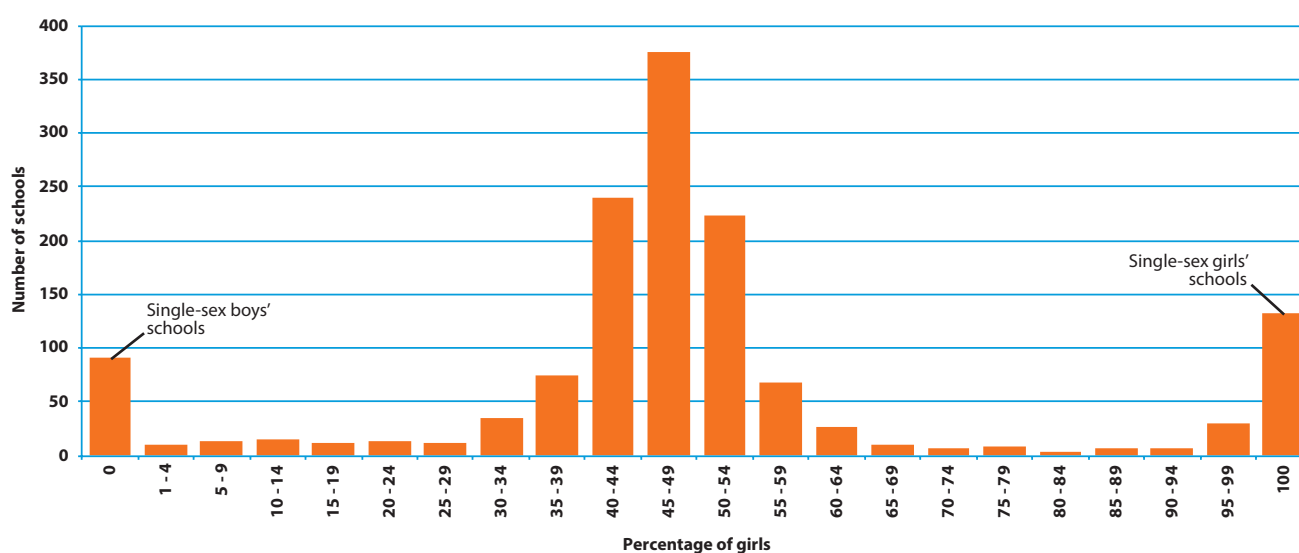
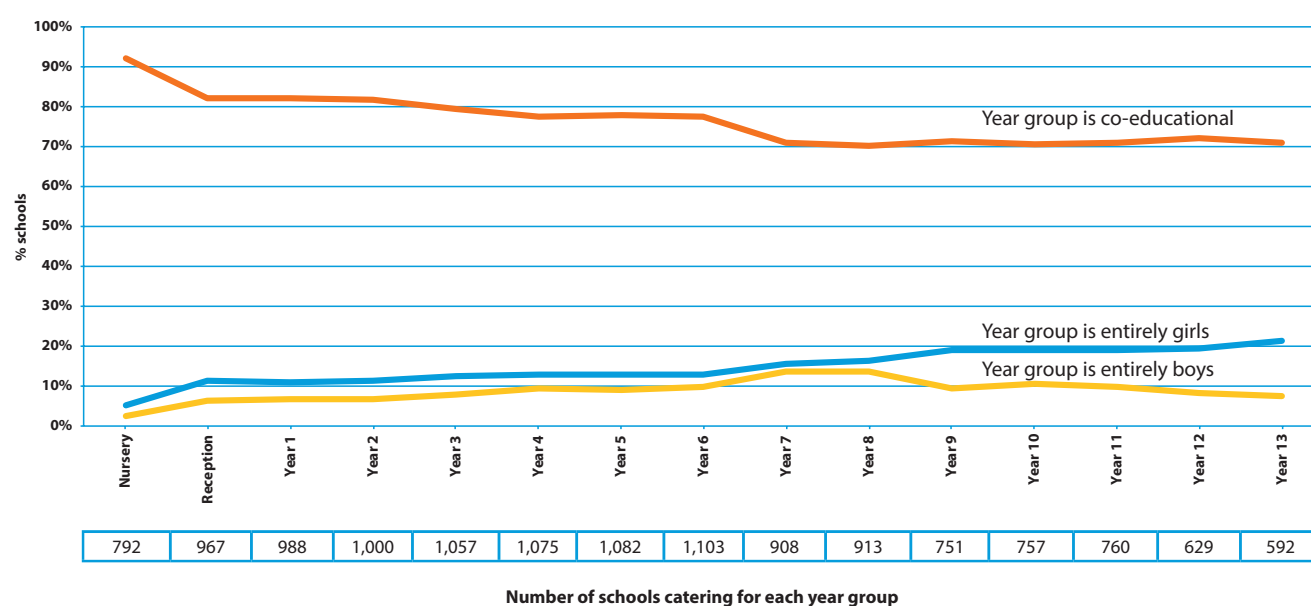


Figure 9 shows the proportion of single-sex schools compared with co-education at each of the different year groups. Co-education is very common at nursery level where over 92% of ISC schools have both boys and girls. As children get older, single-sex education becomes more common, reaching

a peak between years 7 and 10 where around 30% of ISC schools have year groups of either all boys or all girls. Above Year 10, there is a slight shift back to co-education. Finally, it is interesting to see that from Year 12 there are more than twice as many schools with single-sex girls' year groups than single-sex boys'.

Fig 9. Proportion of year groups that are entirely boys, entirely girls, or are co-educational



Pupil Numbers: Boarders

Boarding numbers were 65,649 (based on the day the Census was taken), making up 11.8% of total pupil numbers and a small decrease on the 66,325 boarding pupils reported in 2023. Boarding numbers based on pupils who boarded or will board

at any point during the academic year 2023/24 were 69,981, a decrease of 142 compared with 2023. Figure 10 shows the number of boarders at ISC schools since 2000 and also the percentage of all pupils that they accounted for.

Fig 10. Boarders at ISC schools: 2000-2024¹

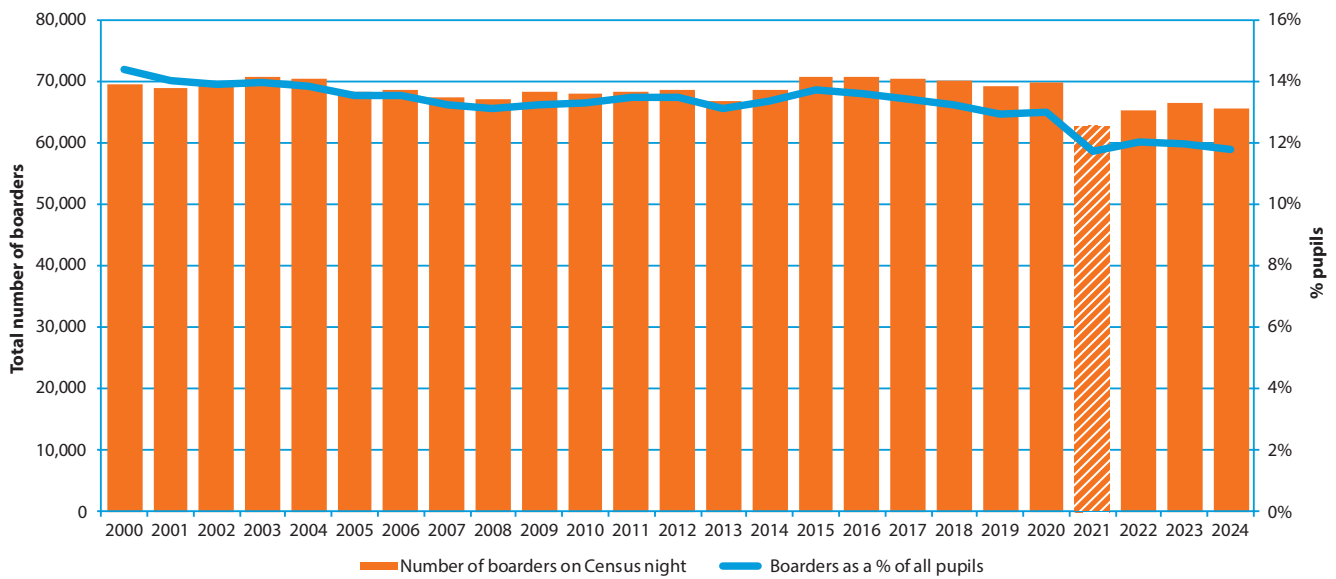
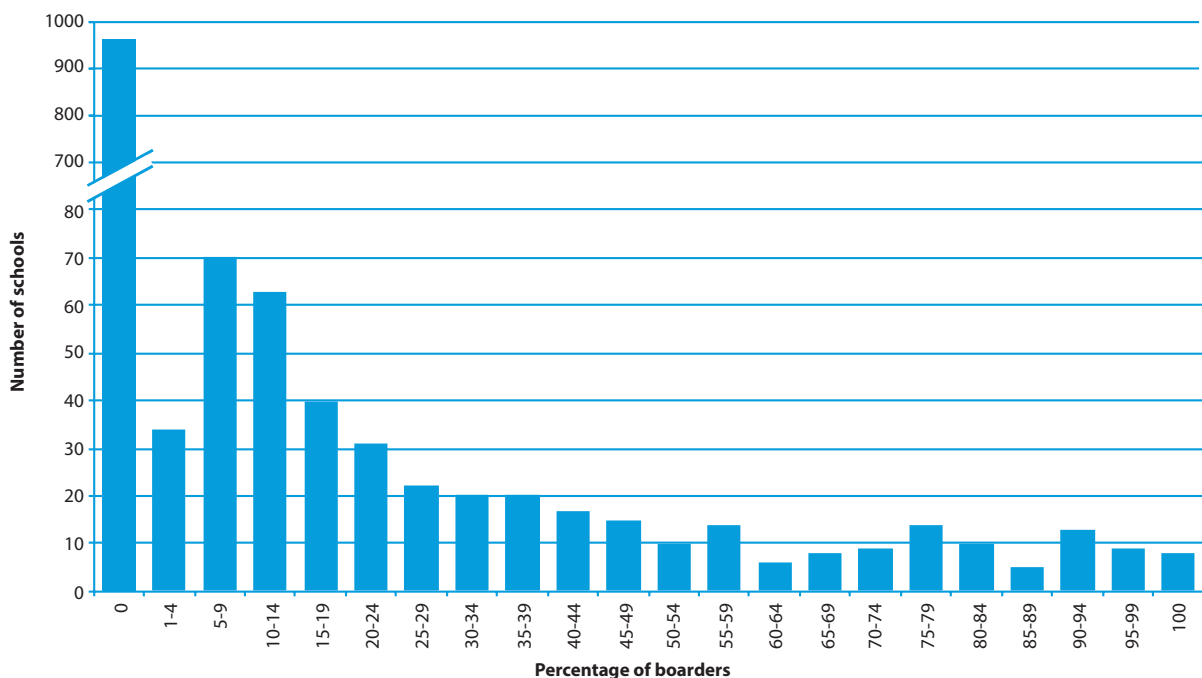


Figure 11 illustrates the proportions of boarding pupils at ISC schools – 438 schools, representing 31% of all ISC schools, cater for boarding pupils. Note, however, that in the large majority

(76%) of ISC boarding schools fewer than half of the pupils board. Only 1.8% (or 8 schools) are exclusively boarding schools.

Fig 11. Boarders as a percentage of all pupils



¹ 2021 value shows estimated boarders as the Census was conducted during a period of remote learning due to Covid restrictions for most schools.

Figure 12 illustrates regional variations in boarding. At schools located in the South Central region, 23% of pupils board, while at schools in London, just 2% of pupils board.

Figure 13 illustrates boarding patterns for ISC schools as a whole and by year group. While overall, 13% of pupils are registered boarders, in sixth forms this proportion more than doubles to over three in ten pupils. For junior pupils, this proportion is significantly lower, with only 2% of pupils boarding.

In addition to boarding being far more prevalent at sixth form than at junior level, sixth form pupils are far more likely to board on a full-time basis: 86% of sixth form boarding pupils are full boarders, 9% are weekly boarders and 5% are flexi boarders. In contrast, more than half of junior boarding pupils are flexi boarders. Whilst full boarding remains most popular overall, the pattern appears to be changing with weekly and flexi boarding becoming more popular. The proportion of weekly and flexi boarders has increased in recent years. In 2016, 15.7% of boarders were weekly or

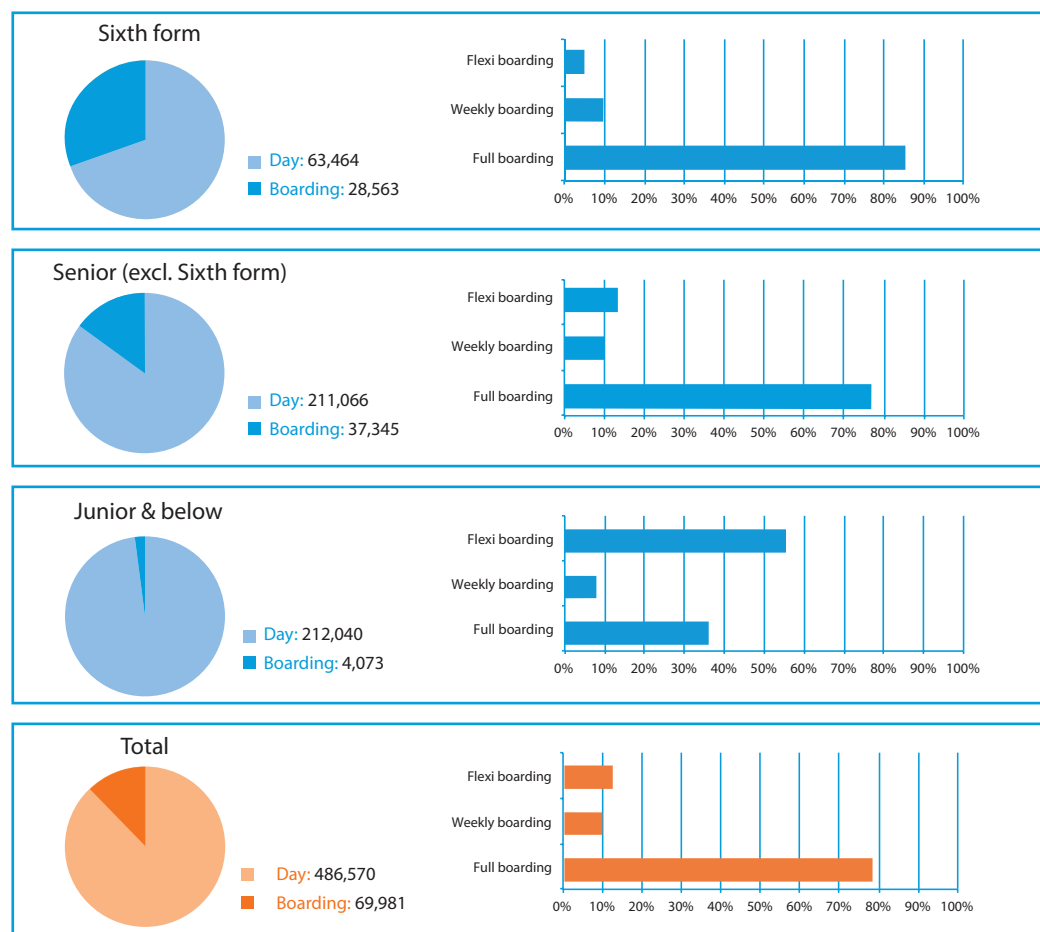
flexi boarders; last year the figure was 21.2%, but this year the figure is 22.0%. Many working parents value the flexibility of weekly and flexi boarding.

Fig 12. Boarders as a percentage of all pupils by region

Region	Number of ISC schools	Number of ISC schools with one or more boarder	Total number of pupils	Total number of boarders	Boarders as % of pupils
South Central	225	103	80,993	18,275	22.6%
South West	95	47	36,733	7,897	21.5%
Wales	19	9	7,304	1,215	16.6%
South East	196	84	80,450	13,154	16.4%
East Midlands	71	23	24,821	3,599	14.5%
West Midlands	104	30	36,980	4,646	12.6%
Yorkshire & Humber	67	25	27,084	3,131	11.6%
East	152	56	64,934	6,043	9.3%
Scotland	34	17	25,033	2,265	9.0%
North West	94	14	37,040	2,184	5.9%
North East	17	4	7,420	291	3.9%
London	318	21	116,133	2,578	2.2%
Total	1,411	438	556,551	65,649	11.8%

Note: Northern Ireland, the Channel Islands and the Isle of Man are excluded due to the small numbers of schools in these regions but are included in the total.

Fig 13. Full, weekly and flexi boarding by year group



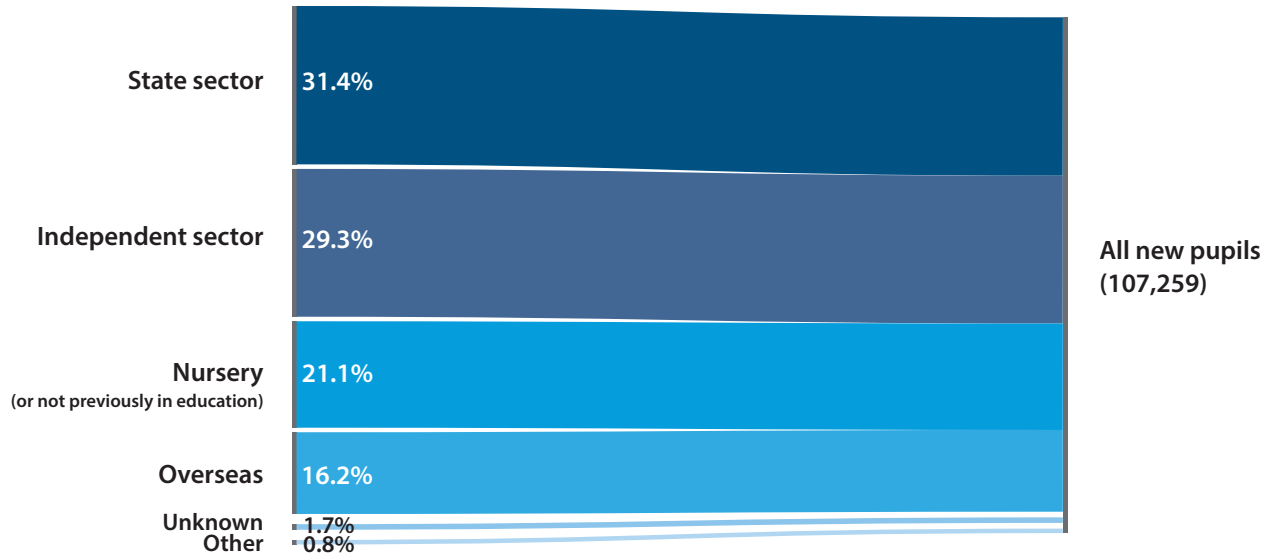
Note: For Figure 13, pupils are classed as boarders if they boarded at some point during the academic year 2023/24. In previous tables and charts, pupils are counted as a boarder if they boarded on Census Day (18th January 2024). A larger number of boarders are, therefore, included in Figure 13.

Pupil Numbers: New pupils

Approximately 6% of school children are educated at independent schools. Figure 14 illustrates where pupils were educated before joining an ISC school this academic year. Nearly three in ten pupils new to the independent sector

came from state-funded establishments. Looking at changes in new pupils at schools that completed the census in 2023 and 2024, there are 2,939 or 2.7% fewer new pupils in 2024 than in 2023.

Fig 14. New pupils breakdown



Pupil Numbers: Special Educational Needs and Disabilities (SEND)¹

ISC schools provide SEND support for 111,154 pupils with SEND (20.0% of all pupils). Of these, 95,332 pupils have been identified with one or more specific SEND. This compares with 87,698 in 2023. 46 ISC schools in England are registered as special needs schools. 7,646 pupils at 876 ISC schools have an

Educational Health and Care (EHC) Plan (6.9% of all ISC SEND pupils). The most common SEND is Specific Learning Difficulty (SpLD), which includes conditions such as dyslexia and dyspraxia and represents 50.2% of all SEND pupils in ISC schools.

Fig 15. SEND pupils

Type of SEND	Total pupils	% of all SEND pupils
Specific Learning Difficulty (SpLD)	55,832	50.2%
Moderate Learning Difficulty (MLD)	3,983	3.6%
Severe Learning Difficulty (SLD)	325	0.3%
Profound & Multiple Learning Difficulty (PMLD)	155	0.1%
Social, Emotional and Mental Health (SEMH)	22,144	19.9%
Speech, Language and Communication Needs (SLCN)	8,970	8.1%
Hearing Impairment (HI)	2,003	1.8%
Visual Impairment (VI)	2,171	2.0%
Multi-Sensory Impairment (MSI)	665	0.6%
Physical Difficulty (PD)	2,843	2.6%
Autistic Spectrum Disorder (ASD)	12,727	11.4%
Other Difficulty/Disability	6,907	6.2%
SEN support but no specialist assessment of type of need	15,822	14.2%
Total	111,154	

Note: Some pupils have more than one SEND: they are counted under each individual category of SEND but are counted only once in the total.

¹ SEND is also referred to as Additional Support Needs, particularly in Scotland.

Pupil Numbers: Ethnicity

Figure 16 shows that 58.3% of all ISC pupils are from a White British background, while 41.7% are from a UK minority ethnic background. Figures for the state-funded sector only cover schools in England and the latest data available are from 2023.

Fig 16. Ethnicity of ISC pupils (2024)

	No. of pupils	% share
White British	234,349	58.3%
UK minority ethnic	167,373	41.7%
Total	401,722	

In order to make a fair comparison, Figure 17 shows ethnicity data for both ISC schools and state-funded schools in England in 2023. This shows that the ethnic make-up at ISC schools broadly mirrors that of all state schools.

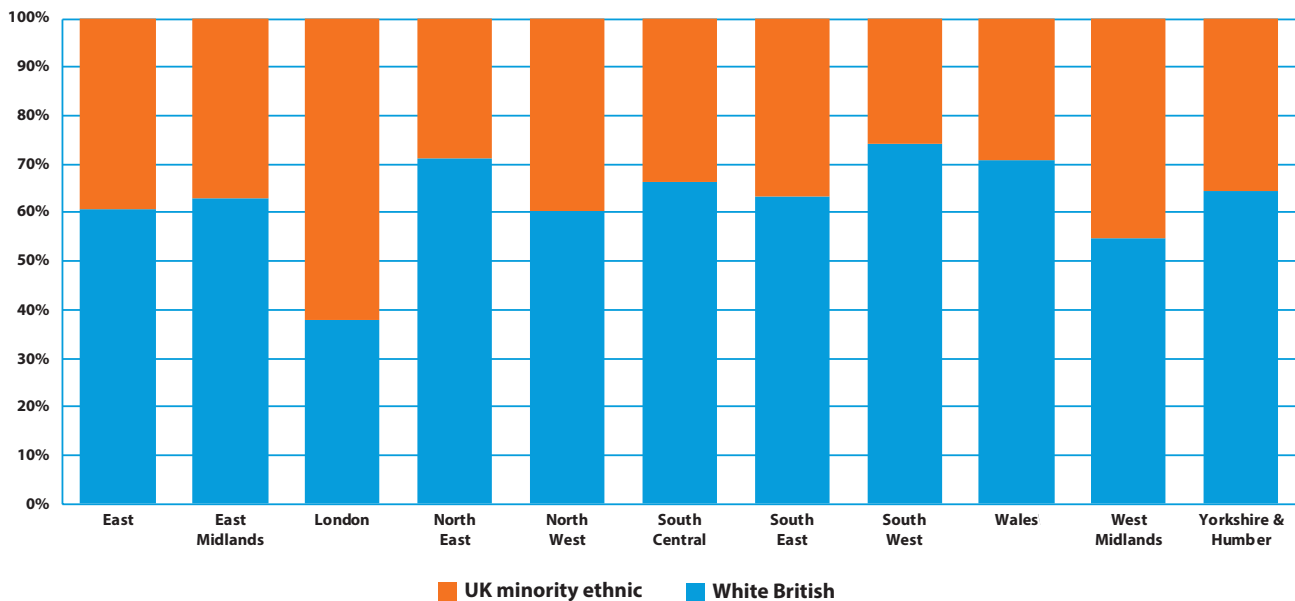
Fig 17. Ethnicity comparisons for schools in England: number of pupils and % share (2023)

	ISC schools	% share	State-funded schools	% share
White British	225,624	59.6%	5,309,428	63.7%
UK minority ethnic	152,959	40.4%	3,031,486	36.3%
Total	378,583		8,340,914	

As in the UK as a whole, ethnicity in ISC schools varies by region as shown by Figure 18. Finally, as with the trends experienced among pupils in the state-funded sector, the proportion of

pupils from a UK minority ethnic background at ISC schools has increased in recent years; 23% of ISC pupils were identified as UK minority ethnic in 2009¹, compared with 42% now.

Fig 18. Ethnicity of ISC pupils by region (2024)



Note: Some schools do not record ethnicity data; 85% of ISC schools were able to submit ethnicity data, equating to 72% of all ISC pupils. Last year we recorded ethnicity for 71% of ISC pupils. Scotland is not included in the above chart because ethnicity was only known for 26% of pupils in Scotland.

¹ Ethnicity data was first collected in 2009.

International Footprint: Non-British Pupils

There are two categories of non-British pupils at ISC schools: those whose parents live overseas and those whose parents live in the UK. Figure 20 shows the relative number of pupils at ISC schools from different overseas countries and regions. For each country or region, it also shows the split between those pupils who have parents living in the UK and those whose parents live overseas.

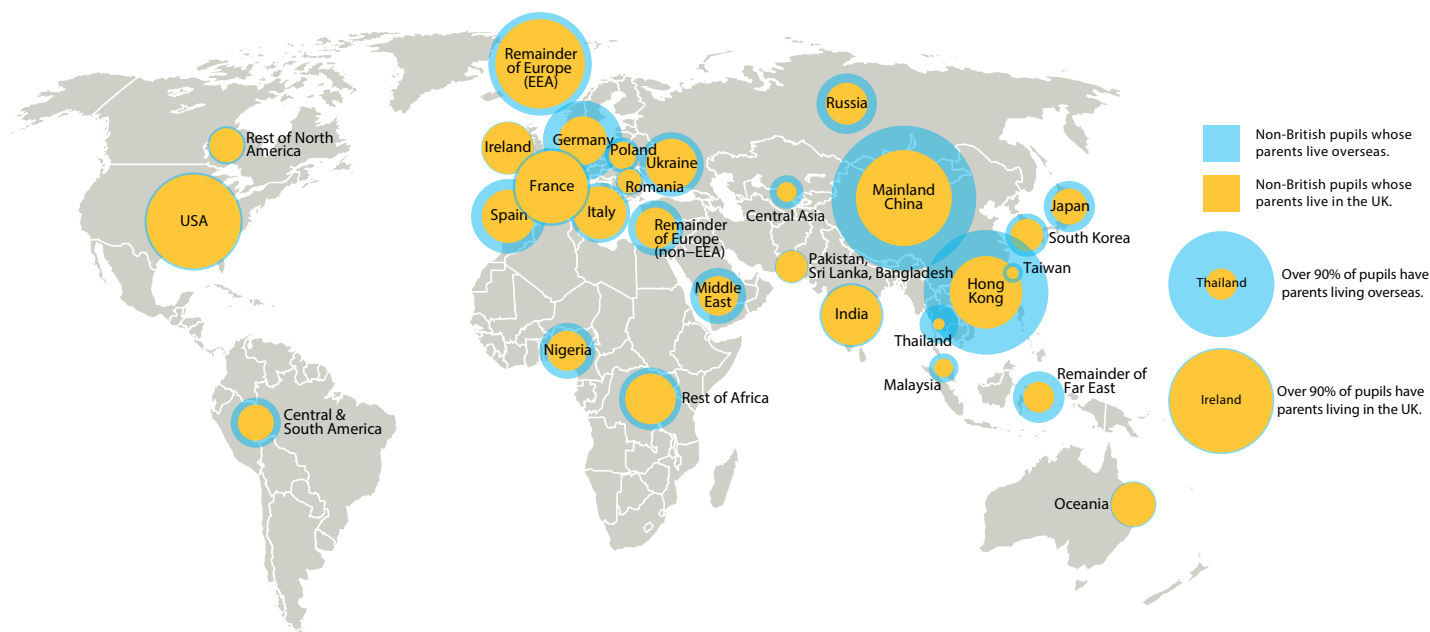
Figure 19 provides the numerical breakdown. In total, 58% of non-British pupils have parents living in the UK.

2024 is the second year in which data on pupils from Ukraine have been collected separately. A total of 2,055 Ukrainian pupils are attending ISC schools, 37% of which have both parents living overseas. 506 (25%) of these pupils are new to ISC schools this academic year.

Fig 19. Non-British pupils at ISC schools

	Total non-British pupils	Parents overseas	Parents in UK	% with parents overseas	% with parents in the UK
Ireland	1,395	77	1,318	5.5%	94.5%
USA	4,759	392	4,367	8.2%	91.8%
Oceania	1,050	97	953	9.2%	90.8%
Pakistan, Sri Lanka & Bangladesh	556	62	494	11.2%	88.8%
India	2,028	244	1,784	12.0%	88.0%
France	2,980	383	2,597	12.9%	87.1%
Rest of North America	721	145	576	20.1%	79.9%
Italy	1,793	421	1,372	23.5%	76.5%
Poland	611	152	459	24.9%	75.1%
Remainder of Europe (EEA)	5,297	1,345	3,952	25.4%	74.6%
Romania	387	103	284	26.6%	73.4%
Rest of Africa	1,953	687	1,266	35.2%	64.8%
Ukraine	2,055	750	1,305	36.5%	63.5%
South Korea	926	400	526	43.2%	56.8%
Remainder of Europe (non-EEA)	1,518	685	833	45.1%	54.9%
Central & South America	1,246	604	642	48.5%	51.5%
Nigeria	1,553	758	795	48.8%	51.2%
Spain	2,765	1,363	1,402	49.3%	50.7%
Middle East	1,555	776	779	49.9%	50.1%
Japan	1,303	659	644	50.6%	49.4%
Russia	1,812	940	872	51.9%	48.1%
Mainland China	10,375	5,824	4,551	56.1%	43.9%
Malaysia	428	254	174	59.3%	40.7%
Germany	3,139	1,976	1,163	62.9%	37.1%
Remainder of Far East	1,318	847	471	64.3%	35.7%
Taiwan	204	132	72	64.7%	35.3%
Central Asia	560	365	195	65.2%	34.8%
Hong Kong	7,677	5,075	2,602	66.1%	33.9%
Thailand	744	679	65	91.3%	8.7%
Total	62,708	26,195	36,513	41.8%	58.2%

Fig 20. Origin of non-British pupils at ISC schools



International Footprint: Non-British pupils whose parents live overseas

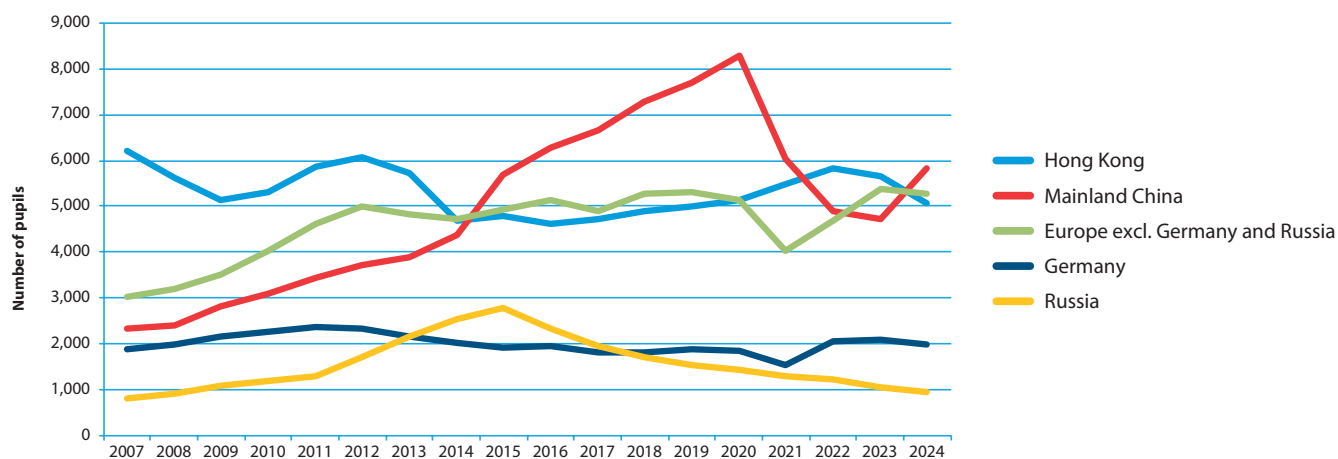
In ISC schools, there are currently 26,195 non-British pupils whose parents live overseas, which represents 4.7% of the total ISC pupil population in 2024. In 2023, there were 25,469 such pupils, also 4.6% of all ISC pupils. If we exclude “international schools” (where more than 90% of the pupils are from overseas), the number drops to 4.4%. This year, the largest number of overseas pupils come from Mainland China. For the past two years, Hong Kong has been the origin of the largest number of pupils, but this year China has returned to being the source of the largest number of pupils.

Non-British pupils whose parents live overseas are more likely to come to ISC schools in the sixth form and senior year groups than junior year groups: 51% of such pupils are in years 12 and 13, 46% in years 7 to 11, with only 2% in years 6 and below. Not surprisingly, these pupils are much more likely to board: 92% of non-British pupils whose parents live overseas choose to board.

Figure 21 shows trends in non-British pupils whose parents live overseas since 2007 (when the Census first started collecting these data), in non-British pupils whose parents live overseas. The number of pupils coming from Mainland China has risen by nearly a quarter this year after three years of decreases. There are now 5,824 pupils from China compared with 4,706 last year. For the second year in succession, there has been a decrease in pupils from Hong Kong in this category. However, there has been an increase in Hong Kong pupils with parents living in the UK from 2,357 in 2023 to 2,602 this year.

Overall, numbers of pupils from European countries with parents living overseas have continued to fall. A total of 8,195 pupils come from European countries. However, there have been increases in the number of pupils coming from some European countries, most notably Poland. In 2023, 108 Polish pupils had both parents overseas – in 2024 this has increased 41% to 152.

Fig 21. Number of non-British pupils whose parents live overseas from selected countries at ISC schools: 2007-2024



Since 2009, schools wishing to recruit pupils from overseas have been required to hold a Student Visa (previously Tier 4) sponsor licence issued by UK Visas and Immigration (UKVI).

With the exception of Ireland, any school recruiting overseas pupils must be on UKVI's register of licensed sponsors. Our Census shows that 639 ISC schools are Student Visa sponsors.

International Footprint: Non-British pupils whose parents live in the UK

In ISC schools there are currently 36,513 non-British pupils whose parents live in the UK, representing 6.6% of all pupils. In 2023 there were 36,334, equating to 6.6% of all pupils.

Among these pupils, 12,547 come from EEA countries, comprising 2.3% of all pupils. The next largest source of

non-British pupils with parents in the UK is the USA with 4,367 pupils. The number of pupils from both Hong Kong and Mainland China in this category continues to grow. Hong Kong pupil numbers have increased 10% to 2,602 and pupil numbers from China have increased 13% to 4,551.

International Footprint: British pupils whose parents live overseas

As well as non-British pupils, there are 4,487 British pupils at ISC schools whose parents serve in HM Forces. In addition, there

are 3,102 other British pupils whose parents live overseas (see Appendix One: Table 13, p37 for more details).

International Footprint: Overseas Schools

A growing number of ISC schools are operating overseas campuses. Figure 22 shows that there are currently 129 such campuses educating a total of 93,257 pupils. This has increased from 107 campuses and 71,660 pupils in 2023. Pupils in overseas campuses are not included elsewhere in this Census. Furthermore, there are approximately 112 ISC affiliated schools, i.e., overseas schools in membership of ISC associations. Figure 23 shows where these schools are located. Data from these schools are not included elsewhere in this Census.

Furthermore, there are approximately 116 ISC affiliated schools, i.e., overseas schools in membership of ISC associations. Figure 23 shows where these schools are located. Data from these schools are not included elsewhere in this Census.

Overseas campuses of ISC schools are only a small part of the landscape of UK-orientated schools¹ overseas. We estimate there to be over 6,000 such schools worldwide.

Fig 22. Location of overseas campuses of ISC schools

Location	Schools	Pupils
Mainland China	53	32,487
United Arab Emirates	13	17,948
Thailand	9	10,344
Other Asia	9	7,023
Africa	6	4,665
Hong Kong	5	3,413
Saudi Arabia	5	3,139
Malaysia	5	2,654
Qatar	4	4,891
Oman	4	1,737
Europe	4	1,294
India	4	636
Japan	3	523
South Korea	2	2,062
Singapore	2	383
Australia	1	58
Total	129	93,257

Fig 23. Overseas schools in membership of ISC associations

Location	GSA	HMC	IAPS	ISA	SofH
Africa	0	4	13	0	3
Americas	1	6	2	1	0
Asia	0	12	6	0	2
Australasia	1	3	0	0	0
Europe	2	14	10	1	5
Middle East	2	11	14	0	3
Total	6	50	45	2	13

Note: ISC does not perform a detailed audit of overseas schools. Therefore, it is possible that some schools could be counted twice if the school is a member of more than one association.

¹ A school that offers a UK curriculum and/or UK examinations and the curriculum is delivered wholly or partly in English (if English is not one of the country's official languages) or has an English-medium curriculum separate from the country's national curriculum (if English is one of the country's official languages).

School Fees

The fees reported here are for the 2023/2024 academic year, with schools having taken decisions on these fee levels in spring 2023. This was when the UK was coming through a period of double digit inflation and all organisations were facing inflationary pressures. The DfE report that state school costs increased by almost 7% in 2023/24.

Looking at the fees of all schools who completed the Census in both 2023 and 2024, the overall average fee increase is 8.0% (excluding nursery fees). This fee increase should be viewed in the context of two significant factors that have impacted the sector. Firstly, the UK has been passing through a period of historically high inflation. Most schools usually make fee decisions for the following academic year in March or April. In April 2023, figures from the ONS show that CPI (the government's key inflation measure) stood at 8.7%¹ (food price inflation was 19% in March 2023 and energy price inflation 40%²). Both are core components of school spending. Wage inflation stood at 7.8%³. Secondly, schools were expecting

employer contributions in the Teachers' Pension Scheme to increase significantly; though they did not then know by how much, they later discovered costs would increase by a fifth for participating schools. From April 2024, employer contributions increased from 23.6% to 28.6% - a relative increase of 21%. Employer contributions for the equivalent scheme in Scotland have risen from 23% to 26%.

Fee levels by age group and fee type for UK pupils are displayed in Figure 24. The majority of pupils attend day schools, meaning the typical fee level is £6,021 per term or £18,064 per annum, a rise of 8.0% on 2023.

Day school fees vary by region, with average termly fees of £4,312 in the North West, rising to £7,334 per term for day schools in London (see Table 6 of Appendix One, p32 for more details). While the majority of day schools charge between £3,000 and £6,000 per term, 60 schools charge under £2,000.

Fig 24. School fees (excluding nursery fees)

Figures represent average weighted fees per term. Average fee figures are based on fees at schools completing the Census in 2024; percentage change is calculated from the change among 1,353 schools completing the Census in both 2023 and 2024.

Age group	Boarding fee	Day fee (boarding schools)	Day fee (day schools)
Sixth Form	£14,791	£8,831	£6,573
Senior	£13,954	£8,287	£6,363
Junior	£10,215	£6,362	£5,501
Overall	£14,153	£7,975	£6,021
% change	9.0%	8.8%	8.0%

¹ Office for National Statistics - Consumer price inflation.

² Office for National Statistics - Food and energy price inflation.

³ Office for National Statistics - Average weekly earnings.

Bursaries and Scholarships

A total of 182,675 pupils currently receive help with their fees, representing 33.5% of all pupils⁵; the value of this help totals nearly £1.4bn, an increase of 10.2% on last year. A significant majority (78%) of total fee assistance is provided directly from the schools themselves: ISC schools currently provide

fee assistance worth almost £1.1bn annually, an increase of 6.8% on the previous year. £539m of this fee assistance was means-tested, meaning that 50% of all fee assistance from schools falls in this category.

Fig 25. Contributions to fees ranked by total value of assistance (annual)

	Total (pupils) ⁴	Average help received by a pupil (£)	% of all pupils	Total (value £m)
The school	158,371	6,780	28.5	1,074
The school: means-tested: bursaries	38,547	12,909	6.9	498
The school: means-tested: scholarships	1,961	9,783	0.4	19
The school: means-tested: eligible families ¹	2,910	7,621	0.5	22
The school: non-means-tested: scholarships	58,913	3,451	10.6	203
The school: non-means-tested: eligible families ¹	76,352	4,337	13.7	331
The school: itrust ²	44	7,382	0.0	0.32
Early Years Funding	22,975	3,303	4.1	76
Local Authorities ³	5,759	30,634	1.1	176
Government Music and Dance Scheme	1,459	24,196	0.3	35
All other sources	1,542	9,524	0.3	15
Total number of pupils helped	182,675	7,533	33.5	1,376

¹ Includes HM Forces discounts, staff discounts, sibling discounts and clergy discounts.

² itrust is an IAPS charity supporting low-income families and families with short-term financial difficulties.

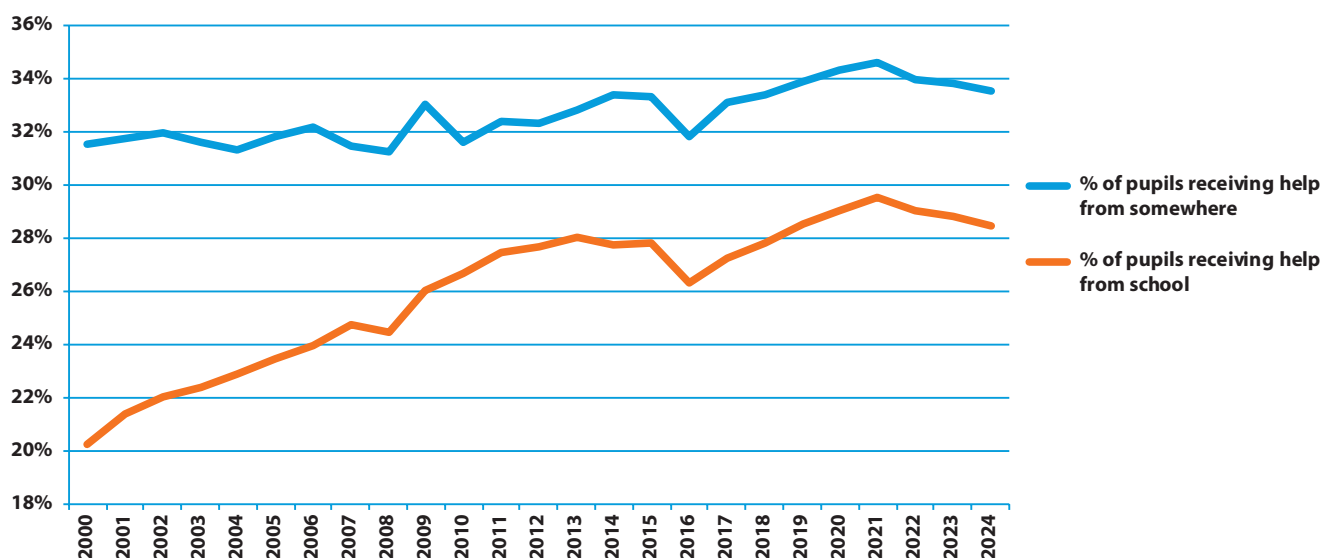
³ Excludes data for schools in Northern Ireland, the Channel Islands and the Isle of Man.

⁴ Some pupils receive help from more than one source: they are counted under each category, but are counted only once in the total.

Figure 26 shows that since 2000 there has been a general upward trend of schools providing fee assistance to an increasing number of pupils. While there has been a downward trend since 2021, this reflects both that there was a need to support more parents financially during the Covid lockdowns and also a continuing move by schools to focus on granting transformational bursaries.

Schools provided more than twice as much assistance in the form of means-tested scholarships and bursaries as they did non-means-tested scholarships. The total value of means-tested scholarships and bursaries was £517m, an increase of 7.1% on last year. Bursaries and means-tested scholarships were awarded to 7% of pupils.

Fig 26. Proportion of pupils receiving fee assistance: 2000-2024



⁵ Excludes data for schools in Northern Ireland, the Channel Islands and the Isle of Man.

Figure 27 shows a breakdown of the 38,547 means-tested bursaries and the 1,961 means-tested scholarships provided by ISC schools. Nearly half of all pupils on means-tested bursaries have more than half of their fees remitted and 7,590 pay no fees at all. In contrast, means-tested scholarships tend to be smaller and over half are for less than 25% of fees. 242 pupils pay no fees as they receive a 100% means-tested scholarship and a further 1,738 pay no fees as a result of a combination of school sources, e.g., a scholarship and means-tested bursary, meaning a total of 9,328 pay no fees, either via a single school source or a combination of school sources.

Note that schools were asked to provide data on greater than 100% bursaries and scholarships. These contribute to costs additional to the basic fee (such as school uniform). 1,048 pupils

benefit from these bursaries, an increase of 7% from last year, and representing 2.6% of all means-tested bursaries and scholarships. This demonstrates an increasing commitment by ISC schools to providing transformational bursaries.

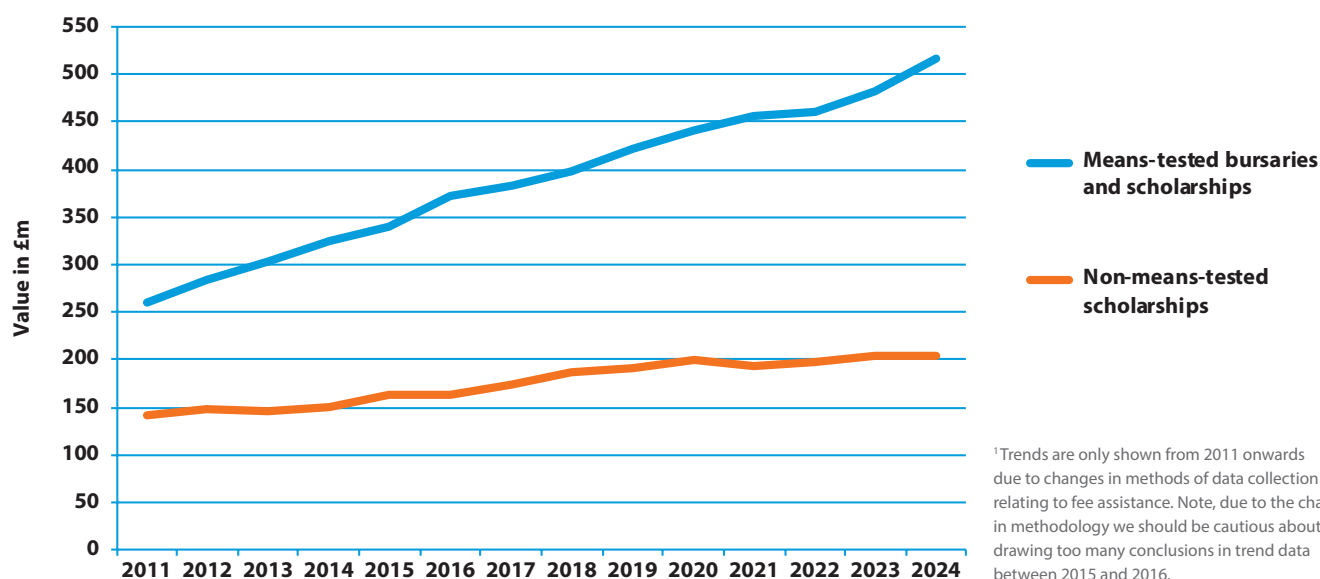
Over the past decade, there has been a continuing shift from non-means-tested scholarships to means-tested bursaries and scholarships, as illustrated in Figure 28. The total value of means-tested bursaries and scholarships provided by schools has increased by £256m since 2011, a rise of 98%; the total value of non-means-tested scholarships has risen by £62m or 44% over the same period. Focusing on the past five years, means-tested bursaries and scholarships have risen 22%, while non-means-tested scholarships have risen only 7%.

Fig 27. Distribution of means-tested bursaries and means-tested scholarships

Size of means-tested bursary	Number of pupils	% of means-tested bursary pupils	Size of means-tested scholarship	Number of pupils	% of means-tested scholarship pupils
1-25%	8,323	21.6%	1-25%	1,137	58.0%
26-50%	11,078	28.7%	26-50%	312	15.9%
51-75%	6,228	16.2%	51-75%	138	7.0%
76-100%	12,918	33.5%	76-100%	374	19.1%
100%	6,378	16.5%	100%	164	8.4%
>100%	970	2.5%	>100%	78	4.0%
Total	38,547		Total	1,961	

Note: 76-100% category includes >100% means-tested bursaries and scholarships.

Fig 28. Trends in means-tested bursaries and scholarships versus non-means-tested scholarships at ISC schools (2011-2024)¹



¹Trends are only shown from 2011 onwards due to changes in methods of data collection relating to fee assistance. Note, due to the change in methodology we should be cautious about drawing too many conclusions in trend data between 2015 and 2016.

Public Benefit

Schools have increased their partnership activities from 8,793 in the calendar year 2022 to 9,248 in 2023. The number of schools with at least one partnership with a local state school has risen from 1,043 last year to 1,068 this year, meaning three quarters (76%) of all ISC schools are involved in partnership activities, despite only 69% of schools holding charitable status.

Figure 30 on page 23 shows a summary of the variety of partnerships undertaken by ISC schools. It shows that partnerships include seconding staff to state schools, sharing facilities, helping state sixth formers prepare their university application, serving as a state school governor, and inviting state pupils to participate in joint classes or events.

The number of state-funded schools and state-funded pupils benefiting from partnership activities is summarised in Figure 29.

On average, each of the 1,068 schools work with approximately 11 state-funded schools and 403 state-funded pupils.

Finally, beyond partnership work, 96% of ISC schools reported that they have raised money for charities over the last year. Not all schools were able to report the amount raised, but for the 59% of schools that reported an amount, the total raised for charity in the calendar year 2023 was £9.9m. We estimate that the true amount could be as high as £16.0m¹ if we include the 37% of schools that did not report totals. In addition, 935 ISC schools organise volunteering opportunities for their staff and / or pupils, which involves 191,128 pupils.

Fig 29. Number of state schools and state pupils benefiting from partnership activities

Number of state-funded schools benefiting from partnership activities

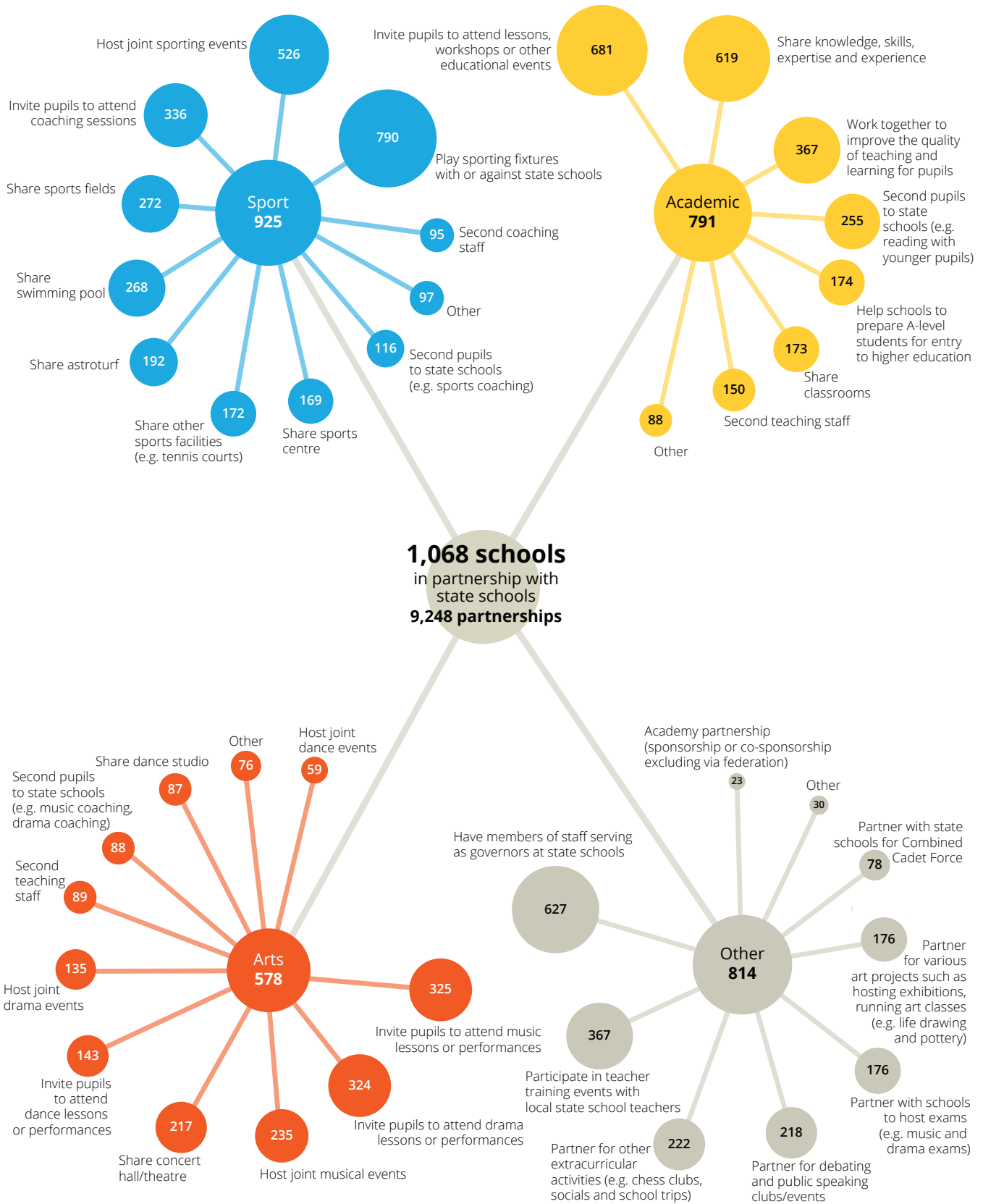
Number of state schools	Number of ISC schools	% of ISC schools
1-10	727	68.1%
11-20	177	16.6%
21-30	74	6.9%
31-40	34	3.2%
41-50	13	1.2%
51+	43	4.0%
Total	1,068	

Number of state-funded pupils benefiting from partnership activities

Number of state pupils	Number of ISC schools	% of ISC schools
20 or fewer	96	9.0%
21 to 50	151	14.1%
51 to 100	177	16.6%
101 to 200	192	18.0%
201 to 500	234	21.9%
501 to 1,000	107	10.0%
1,001 to 2,000	58	5.4%
2,001+	53	5.0%
Total	1,068	

¹ Upper estimate assumes the remainder schools (37%) raised funds in line with the average of £11,770 per school.

Fig 30. Partnerships with local state schools
Number of schools with at least one of a partnership type



School Groupings

Earlier sections of this report have already demonstrated the wide variety of types of school in membership of ISC. Our schools range from large schools offering education from nursery through to sixth form to small community schools for narrower age ranges.

This section outlines another aspect of that diversity: schools that are members of school companies, religious groups, livery companies, partnership groups or other groupings. Figure 31 shows 696 schools – 49% of all ISC schools – stated that they were a member of at least one group. Schools were also asked what the benefits were of belonging to such groups. These are summarised in Figure 32.

There are distinct differences between the categories. Some relate to the ownership structure of the school while others are voluntary groupings based on shared interests and partnerships.

School companies

The Census recorded 146 schools confirming they were owned by a company, jointly with other schools. This is not necessarily a homogeneous model since some may be groups of different types of school, some groups of charitable schools, others privately owned.

Religious groups

218 schools stated they are part of religious groups with a shared faith. These groups will represent the common interests of schools of that faith, with opportunities to share resources, guidance and common themes.

Overall, the Census recorded 681 schools declaring a religious affiliation or ethos. While the majority are schools of Christian denominations, such as Catholic, Church of England and Quaker, the sector also provides for a range of faiths, including Muslim and Jewish schools.

Partnership groups

The large range of partnership activities in which independent schools participate has already been covered in the public benefit section. While some of these partnerships are developed individually, in other cases, independent-state school partnerships (ISSPs) are established to enable partnerships to be supported on

Fig 31. School membership of school groupings

Type of group	Number of schools
Religious Groups	218
School Companies	146
State School Partnership Groups	76
Livery Companies	43
Miscellaneous	359
Total	696

Fig 32. Benefits of membership

Benefit	Number of schools
Sharing best practice	621
Reputation of group	464
Economies of scale	318
Ability to employ specialist advisors	271
Other	52

a more formal basis. These groups often involve multiple independent and multiple state schools, enabling new partnerships to be developed and existing partnerships to grow and evolve to the mutual benefit of the schools and pupils involved.

Livery companies

Livery companies have a long history of supporting education as part of their charitable aims. Some ISC schools can trace their foundation back to either a livery company or an individual benefactor or benefactors who were members of a livery company. Over time, the relationship between schools and livery companies has developed. While some livery companies still play a significant role in the governance of schools, others maintain a less formal relationship. This may involve sponsoring students from disadvantaged backgrounds and providing support for the teaching of subjects related to their original trade. 43 ISC member schools have relationships with livery companies.

Miscellaneous

The remaining groups to which schools belong are not easily categorised. Some have a geographical basis and others offer mutual support across schools with shared values or who offer education to a particular age range.

Teaching Staff

A total of 60,193 full-time equivalent teachers are employed at ISC schools. The teaching profession (across the education sector as a whole) has a far greater proportion of female teachers, but this imbalance is much less pronounced at ISC schools. 37% of full-time equivalent teachers at ISC schools are men. This compares with 24% in state-funded schools¹.

Fig 33. Teacher numbers and pupil-teacher ratio

Full-time	
Men	20,049
Women	29,060
Total	49,109
Part-time	
Men	3,569
Women	14,933
Total	18,502
Part-time hours	
Men	63,995
Women	296,246
Total	360,241
Overall full-time equivalent (32.5 hours = 1 full-time)	
Men	22,018
Women	38,175
Total	60,193
Pupil-teacher ratio	8.8:1

For more detail see Appendix One, Tables 19 and 21, p41 and Appendix Two, Tables 12 and 14, p54 and p55.

A total of 11,282 full-time equivalent teaching assistants are employed at ISC schools, making up 16% of classroom staff. The equivalent proportion at state-funded schools is 38%, over twice as high. The pupil-teacher ratio at ISC schools is 8.8:1. This compares with an average of 18.0:1 across all state-funded schools in 2023.

Fig 34. Teaching assistant numbers

Full-time	
Men	1,007
Women	6,598
Total	7,605
Part-time	
Men	361
Women	5,440
Total	5,801
Part-time hours	
Men	6,787
Women	112,718
Total	119,505
Overall full-time equivalent (32.5 hours = 1 full-time)	
Men	1,216
Women	10,066
Total	11,282

For more detail on teaching assistants, see Appendix One, Table 20, p41 and Appendix Two, Table 13, p55.

¹ Based on Department for Education (DfE) data 2022/23 (and hence England only), the most recent year for which figures are available. <https://explore-education-statistics.service.gov.uk/find-statistics/school-workforce-in-england>

Entrance to Higher Education

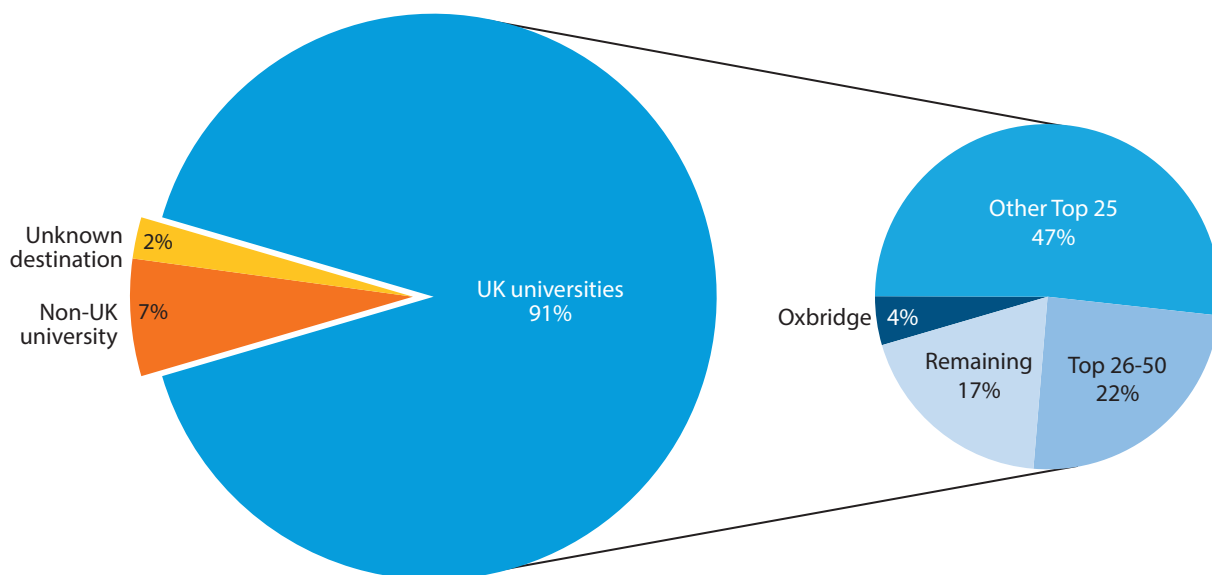
The vast majority of ISC school leavers continue to higher education. Only small numbers take alternative routes such as apprenticeships and employment. This year 2.6% of school leavers went straight to employment in 2023¹, and a further 1.8% entered further education and training, including apprenticeships.

Of those continuing to higher education, 91% do so within the UK. The majority (51%) continue to a Top 25 university², including 4% who continue to either Oxford or Cambridge.

A further 22% take up places at universities ranked 26-50. Figure 36 shows the top 25 UK universities attended by ISC pupils.

Schools were asked to break down the university destinations of pupils applying for a deferred entry to university. Of those continuing to university, 5,542 pupils (14.0%) chose to defer entry. The universities with the highest proportions of deferred entries were Oxford Brookes (23.9%), Cardiff Metropolitan (21.1%), Exeter (17.8%), Bristol UWE (16.7%), and Newcastle (15.7%)³.

Fig 35. Higher education destination summary



Note: This chart excludes deferred entries.

For the 7% of pupils who chose to study outside of the UK, the USA remains by far the most popular destination attracting 48% of ISC pupils going to overseas universities, as illustrated in Figure 37 on page 27. This is a decrease compared with last year when 54% chose to study in the USA. ISC pupils go on to a wide range of overseas universities and this range has been expanding year on year. In 2012, fewer than 400 overseas institutions attracted

ISC pupils; now there are 616, 257 of which are located in the USA. The top 10 overseas universities are illustrated in Figure 38 on page 27.

Finally, pupils choosing to study overseas are not confined to a small number of ISC schools. Pupils from 60% of ISC schools with Year 13 leavers go on to higher education overseas.

¹ The year given reflects the year pupils left their school, rather than the year that the figure was published in the Census, meaning that the most recent figure is for 2023.

² Top 25/50 universities determined by Sunday Times Good University Guide 2024: <https://www.thetimes.co.uk/article/good-university-guide-in-full-tp6dzs7wn>.

³ Only universities which are the stated destination of at least 100 students.

Fig 36. Destination of ISC pupils attending UK universities: Top 25

Number of pupils as a proportion of all ISC pupils attending UK universities.

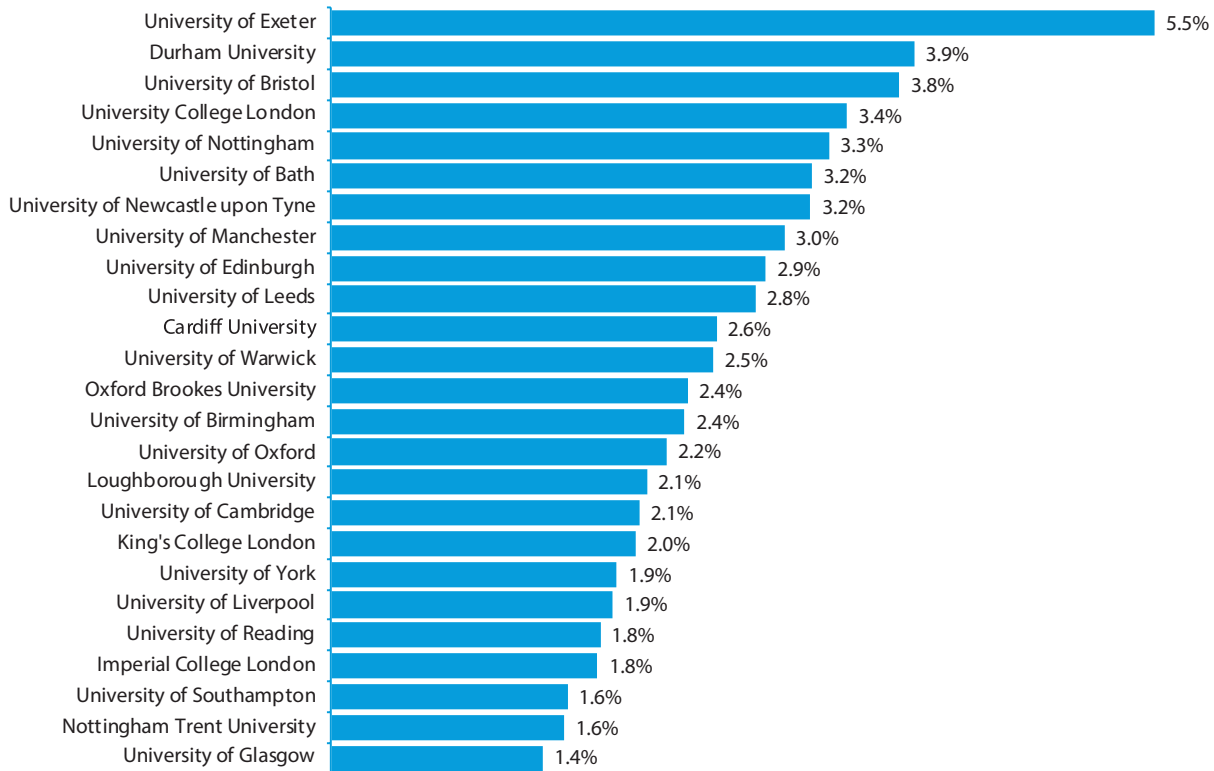


Fig 37. Destination of ISC pupils going to non-UK universities: Countries

Proportion of all ISC pupils attending non-UK universities.

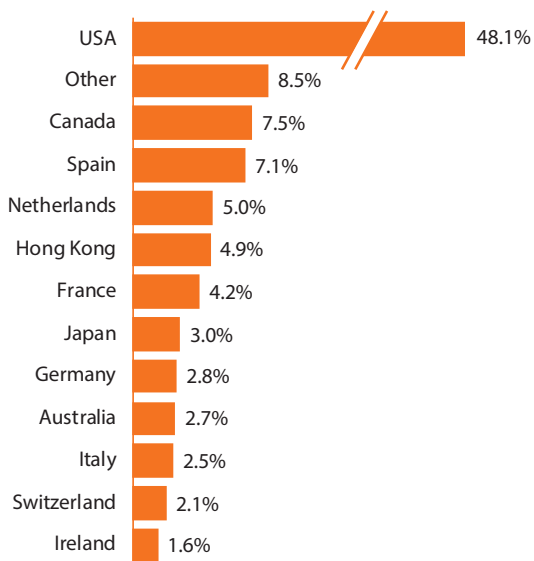
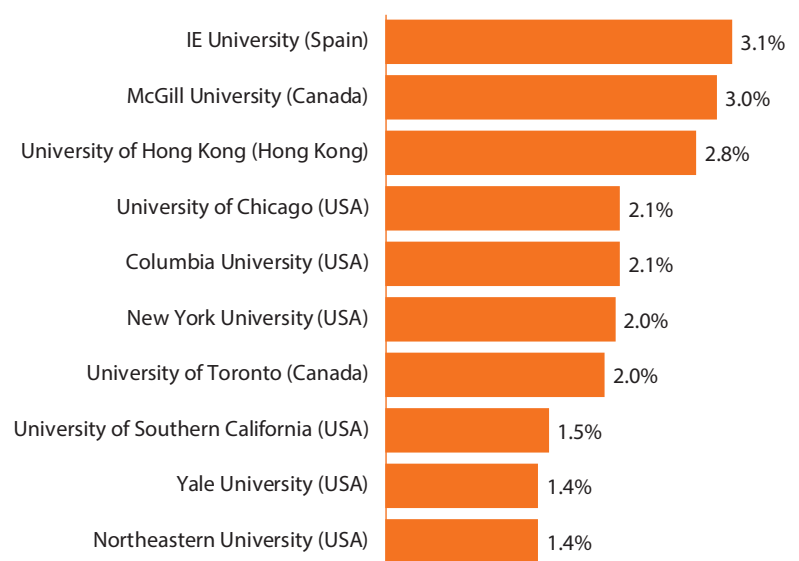


Fig 38. Destination of ISC pupils attending non-UK universities: Top 10

Proportion of all ISC pupils attending non-UK universities.



Exam Results¹

In summer 2023, grades were determined by external examination for the second year since the Covid pandemic. Therefore, detailed examination result data released by the DfE are analysed below. It should be noted that 2023 was the first year after the pandemic where grade boundaries returned to pre-Covid standards in England, so comparisons with last year’s data should not be made.

As pupils at ISC member schools often take a mixture of GCSEs and International GCSEs, the analysis below will focus on A-level results. This is because the DfE only releases data about GCSEs, meaning an analysis of these data would not be a true reflection of our pupils’ performance.

Fig 39. A-level entries as a proportion of all entries

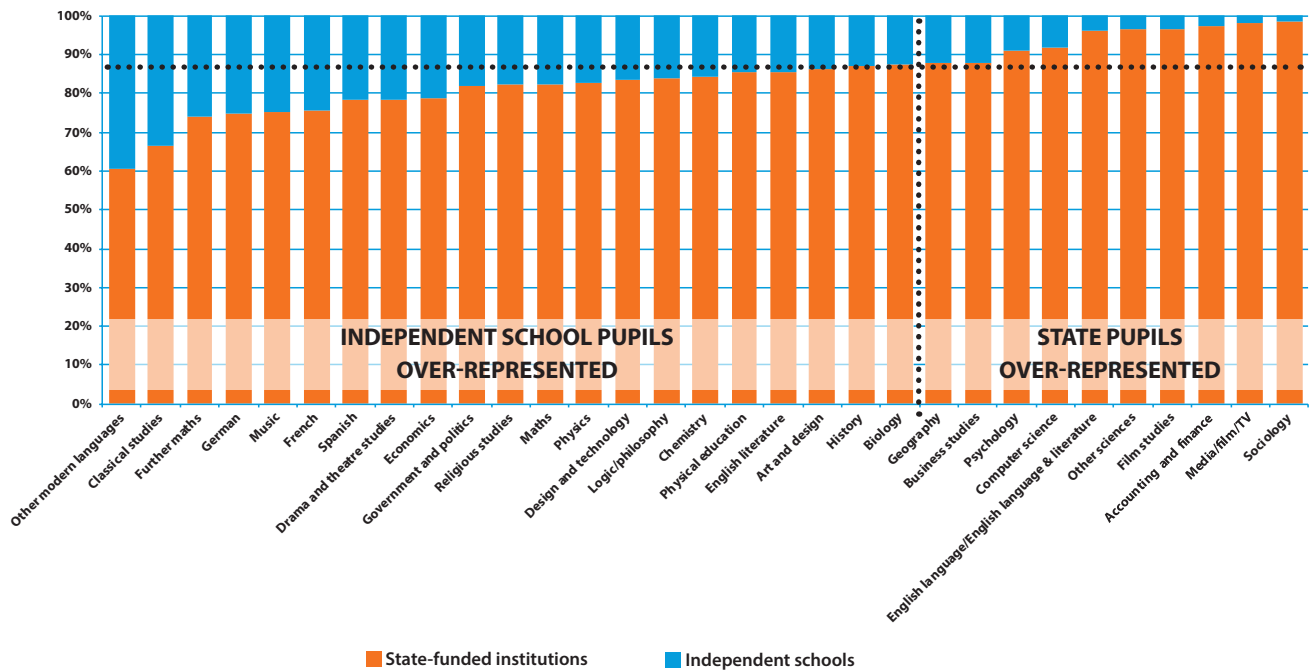


Figure 39 shows the proportion of A-level entries for each subject broken down by independent schools and state-funded institutions. Despite only 12.4% of A-level students coming from independent schools, the data illustrate that independent pupils are overrepresented in many key subjects, including economics, modern foreign languages

(MFL) and STEM (science, technology, engineering, and mathematics). For example, over a quarter (26%) of further mathematics entries, 3 in 10 (30%) MFL entries and over 1 in 6 (17%) physics entries are from independent school pupils. In contrast, 92% of computer science entries are from state-funded institutions.

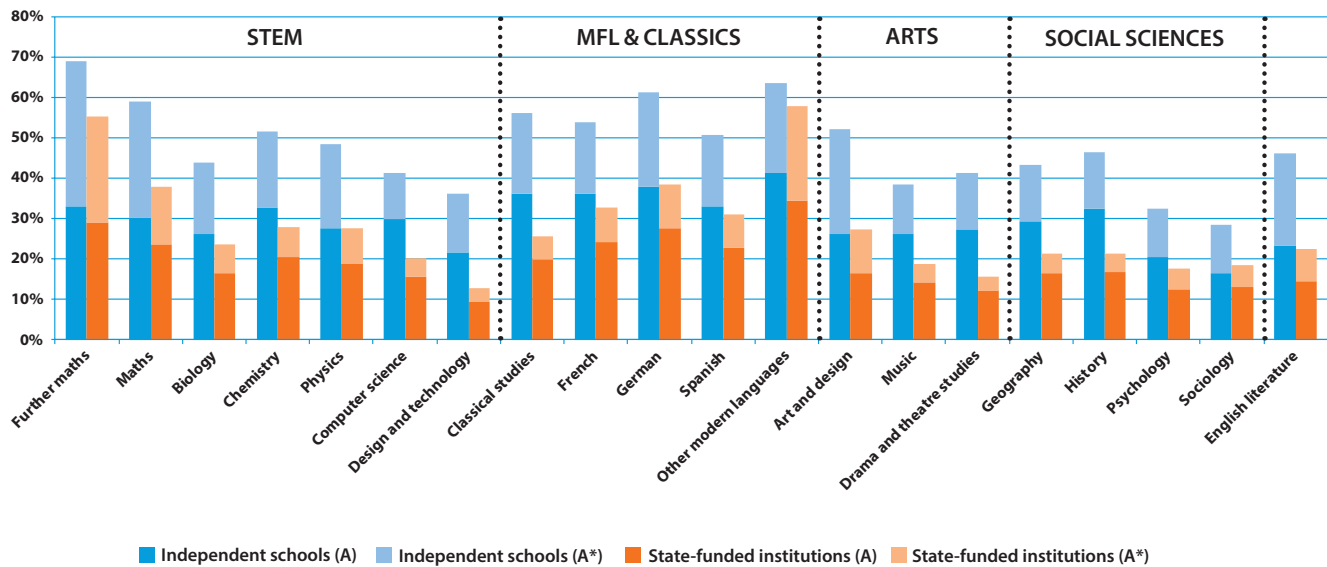
¹ DfE: Student counts and results – A-level by institution type and gender.

Figure 40 illustrates the proportion of entries awarded the two top A-level grades of A* and A in independent and state-funded institutions. It shows that independent school candidates outperform state-funded entrants in many key subjects. For example, in chemistry and maths over half (51% and 59% respectively) of independent school entries are graded A* or A, compared with state-funded institution candidates where 28% and 38% received the top two grades in these subjects. Looking at the modern foreign language subjects, over 50% of independent school candidates received an A* or A grade in all languages, with over 60% awarded an A* or A in German. In contrast, less than 40% of state-funded candidates gained an A* or A in the three most popular MFL subjects. In social science subjects,

independent school candidates also recorded strong performances. In geography, 43% of independent school candidates gained an A* or A compared with 21% in state-funded institutions, and in history, 47% of independent school entries received an A* or A, whereas 21% of state-funded candidates gained the same grades.

Overall, nearly half (47%) of A-level entries from independent schools were awarded an A* or A grade. This contrasts with state-funded institutions where fewer than one in four (24%) entries gained an A* or A grade. DfE data¹ also show that three quarters (75%) of the top 100 schools and colleges and nearly 4 in 5 (78%) of the top 50 schools ranked by average A-level points score are independent schools.

Fig 40. Proportion of A*/A (A-level) grades in England



¹ DfE: school performance data – 16 to 18 results (revised).

Appendix One

Non-Comparative Tables

The tables in Appendix One show figures for all 1,411 schools completing the Census this year and therefore cannot be compared to previous years on a like-for-like basis. These tables follow the same format as last year.

Table 1. School and pupil numbers by category of school

This table shows total school and pupil numbers, including a breakdown by category of school. The girls at "single-sex: boys" schools and the boys at "single-sex: girls" schools are all in the nursery.

Schools	Senior	Mixed-age	Junior	Single-sex: boys'	Single-sex: girls'	Co-ed	Schools with boarders	Day schools	Total
Charities	194	384	399	80	142	755	352	625	977
Other	78	125	231	21	13	400	86	348	434
Total	272	509	630	101	155	1,155	438	973	1,411
Not-for-profit	203	413	419	86	146	803	360	675	1,035
For-profit	69	96	211	15	9	352	78	298	376
Total	272	509	630	101	155	1,155	438	973	1,411
Pupils									
Boarders (boys)	22,258	9,264	3,565	6,411	0	28,676	35,087	0	35,087
Boarders (girls)	20,161	8,390	2,011	0	7,031	23,531	30,562	0	30,562
Day pupils (boys)	44,502	123,700	79,023	39,036	214	207,975	79,891	167,334	247,225
Day pupils (girls)	40,378	138,590	64,709	157	68,618	174,902	69,872	173,805	243,677
Total (boys)	66,760	132,964	82,588	45,447	214	236,651	114,978	167,334	282,312
Total (girls)	60,539	146,980	66,720	157	75,649	198,433	100,434	173,805	274,239
Total	127,299	279,944	149,308	45,604	75,863	435,084	215,412	341,139	556,551

Table 2. Pupil numbers by age

This table shows the number of pupils in all ISC schools by age, gender and day/boarding.

Age on 31st August 2023	Boarders (boys)	Day pupils (boys)	Boarders (girls)	Day pupils (girls)	Total
0-2	0	6,042	0	6,229	12,271
3	0	8,226	0	8,382	16,608
4	0	10,282	0	10,234	20,516
5	0	11,123	0	10,713	21,836
6	3	11,781	2	11,616	23,402
7	51	13,565	50	13,195	26,861
8	209	14,244	139	14,253	28,845
9	436	15,489	306	14,872	31,103
10	747	16,737	451	16,044	33,979
11	1,505	21,349	1,475	20,769	45,098
12	2,004	22,269	1,805	21,620	47,698
13	4,041	21,228	3,266	21,341	49,876
14	4,905	20,898	4,159	20,772	50,734
15	5,925	21,251	5,047	21,318	53,541
16	7,152	16,421	6,582	15,814	45,969
17	6,739	14,987	6,071	15,206	43,003
18	1,224	1,112	1,080	1,037	4,453
19	146	225	129	258	758
Total	35,087	247,229	30,562	243,673	556,551

Table 3. Pupil numbers by year group

This table shows the number of pupils in all ISC schools by year group, gender and day/boarding.

Year group	Boarders (boys)	Day pupils (boys)	Boarders (girls)	Day pupils (girls)	Total
Nursery	0	14,567	0	14,737	29,304
Reception	0	10,238	0	10,232	20,470
Year 1	0	11,185	0	10,733	21,918
Year 2	1	11,784	2	11,651	23,438
Year 3	49	13,587	50	13,224	26,910
Year 4	238	14,254	143	14,228	28,863
Year 5	445	15,544	307	14,898	31,194
Year 6	778	16,738	453	16,047	34,016
Year 7	1,534	21,462	1,492	20,768	45,256
Year 8	2,055	22,233	1,826	21,598	47,712
Year 9	4,174	21,198	3,401	21,313	50,086
Year 10	5,362	21,062	4,419	20,957	51,800
Year 11	5,883	21,340	5,000	21,334	53,557
Year 12	7,621	16,242	7,064	15,808	46,735
Year 13	6,947	15,795	6,405	16,145	45,292
Total	35,087	247,229	30,562	243,673	556,551

Table 4. New pupil numbers by year group

This table shows the number of pupils new to their school this academic year by year group, gender and day/boarding.

Year group	Boarders (boys)	Day pupils (boys)	Boarders (girls)	Day pupils (girls)	Total
Nursery	0	7,327	0	7,307	14,634
Reception	0	4,600	0	4,602	9,202
Year 1	0	1,112	0	1,115	2,227
Year 2	1	1,210	0	1,267	2,478
Year 3	29	2,939	21	2,704	5,693
Year 4	115	1,801	52	1,623	3,591
Year 5	124	1,739	100	1,890	3,853
Year 6	208	1,695	128	1,500	3,531
Year 7	715	11,513	974	11,831	25,033
Year 8	391	1,400	403	1,437	3,631
Year 9	3,463	4,034	2,231	2,925	12,653
Year 10	1,383	977	1,360	1,277	4,997
Year 11	853	368	922	356	2,499
Year 12	3,071	2,357	3,768	3,518	12,714
Year 13	223	452	229	482	1,386
Total	10,576	43,524	10,188	43,834	108,122

Table 5. Pupil numbers by region

This table shows the number of pupils by region. Please see Appendix Three Figure 1 for definitions of regions.

Region ¹	No. of schools	Boarders (boys)	Day pupils (boys)	Boarders (girls)	Day pupils (girls)	Total boarders	Total day pupils	Total pupils
London	318	1,899	55,438	679	58,117	2,578	113,555	116,133
South Central	225	9,660	31,015	8,615	31,703	18,275	62,718	80,993
South East	196	6,691	34,629	6,463	32,667	13,154	67,296	80,450
East	152	3,057	30,381	2,986	28,510	6,043	58,891	64,934
West Midlands	104	2,443	16,295	2,203	16,039	4,646	32,334	36,980
South West	95	4,138	14,374	3,759	14,462	7,897	28,836	36,733
North West	94	1,254	17,655	930	17,201	2,184	34,856	37,040
East Midlands	71	2,103	10,600	1,496	10,622	3,599	21,222	24,821
Yorkshire and Humber	66	1,450	11,551	1,681	11,235	3,131	22,786	25,917
Scotland	34	1,275	11,315	990	11,453	2,265	22,768	25,033
Wales	19	685	3,014	530	3,075	1,215	6,089	7,304
North East	18	180	4,070	111	4,226	291	8,296	8,587
All²	1,411	35,087	247,229	30,562	243,673	65,649	490,902	556,551

¹ Northern Ireland, the Channel Islands and the Isle of Man are not listed due to the small number of schools in these regions.

² The total includes data for schools in Northern Ireland, the Channel Islands and the Isle of Man.

Table 6. Fees by region (including nursery fees)¹

This table shows average termly fees by region and type of school. Please see Appendix Three, Figure 1, for definitions of regions.

Region ¹	Boarding fee	Day fee (boarding schools)	Day fee (day schools)
London	£15,862	£10,857	£7,243
South Central	£14,804	£8,248	£6,007
South East	£14,443	£8,648	£6,415
East	£13,338	£7,746	£6,206
West Midlands	£14,346	£6,951	£4,988
South West	£14,264	£7,615	£5,357
North West	£12,235	£5,974	£4,312
East Midlands	£14,127	£8,265	£5,179
Yorkshire and Humber	£9,160	£5,539	£4,978
Scotland	£14,006	£7,800	£5,131
Wales	£14,639	£6,014	£4,800
North East	£10,979	£5,559	£4,999
All²	£14,153	£7,841	£5,919

¹ Northern Ireland, the Channel Islands and the Isle of Man are not listed due to the small number of schools in these regions.

² The total includes data for schools in Northern Ireland, the Channel Islands and the Isle of Man.

Table 7. Fees by age group (including nursery fees)

This table shows average termly fees for different age groups in ISC schools.

Age group	Boarding fee	Day fee (boarding schools)	Day fee (day schools)
Sixth form	£14,791	£8,831	£6,573
Senior	£13,954	£8,287	£6,363
Junior	£10,215	£6,362	£5,501
Nursery		£3,690	£4,419
Overall including nursery	£14,153	£7,841	£5,919

Table 8a. Contributions to fees: senior, mixed-age and junior schools (termly values)

For ISC schools categorised by pupil age, this table shows the breakdown of contributions to fees by type of contribution.

	Senior (pupils)	Senior (value £m)	Mixed-age (pupils)	Mixed-age (value £m)	Junior (pupils)	Junior (value £m)	Total (pupils)	Total (value £m)	% of all pupils
The school	42,838	138.98	84,141	174.78	31,392	44.17	158,371	357.92	28.5
The school: means-tested: bursaries	12,369	72.76	20,995	79.02	5,183	14.09	38,547	165.87	6.9
The school: means-tested: scholarships	870	4.38	872	1.54	219	0.48	1,961	6.39	0.4
The school: means-tested: eligible families ¹	997	2.20	1,304	4.36	609	0.84	2,910	7.39	0.5
The school: non-means-tested: scholarships	21,990	28.10	34,315	36.96	2,608	2.71	58,913	67.77	10.6
The school: non-means-tested: eligible families ¹	12,473	31.55	39,509	52.85	24,370	25.99	76,352	110.39	13.7
The school: itrust ²	0	0.00	16	0.05	28	0.06	44	0.11	0.0
Early Years Funding	0	0.00	6,833	7.88	16,142	17.41	22,975	25.29	4.1
Local Authorities ³	1,188	14.63	4,290	42.04	281	2.14	5,759	58.81	1.1
Government Music and Dance Scheme	778	6.13	633	5.42	48	.22	1,459	11.77	0.3
All other sources	605	1.97	657	1.55	280	1.38	1,542	4.90	0.3
Total	44,390	161.71	93,480	231.66	44,805	65.31	182,675	458.69	33.5
Number of pupils helped as a % of all pupils	35.8		34.3		30.2		33.5		

¹ Includes HM Forces discounts, staff discounts, sibling discounts and clergy discounts.

² itrust is an IAPS charity supporting low-income families and families with short-term financial difficulties.

³ Excludes data for schools in Northern Ireland, the Channel Islands and the Isle of Man.

Table 8b. Contributions to fees: single-sex and co-educational schools (termly values)

For ISC schools categorised by pupil gender, this table shows the breakdown of contributions to fees by type of contribution.

	Single-sex: boys' (pupils)	Single-sex: boys' (value £m)	Single-sex: girls' (pupils)	Single-sex: girls' (value £m)	Co-ed (pupils)	Co-ed (value £m)	Total (pupils)	Total (value £m)	% of all pupils
The school	7,826	26.92	18,657	44.85	131,888	286.16	158,371	357.92	28.5
The school: means-tested: bursaries	2,938	17.11	5,526	26.71	30,083	122.05	38,547	165.87	6.9
The school: means-tested: scholarships	165	1.11	54	.21	1,742	05.07	1,961	6.39	0.4
The school: means-tested: eligible families ¹	162	.28	607	.95	2,141	06.17	2,910	7.39	0.5
The school: non-means-tested: scholarships	3,155	4.00	9,351	8.83	46,407	54.93	58,913	67.77	10.6
The school: non-means-tested: eligible families ¹	2,060	4.42	5,851	8.10	68,441	97.87	76,352	110.39	13.7
The school: itrust ²	0	0.00	12	0.04	32	0.07	44	0.11	0.0
Early Years Funding	561	0.58	1,342	1.41	21,072	23.30	22,975	25.29	4.1
Local Authorities ³	493	3.54	52	0.31	5,214	54.96	5,759	58.81	1.1
Government Music and Dance Scheme	16	0.01	0	0.00	1,443	11.75	1,459	11.77	0.3
All other sources	114	0.85	168	0.50	1,260	3.54	1,542	4.90	0.3
Total	8,454	31.91	19,780	47.06	154,441	379.71	182,675	458.69	33.5
Number of pupils helped as a % of all pupils	20.0		26.5		36.1		33.5		

¹ Includes HM Forces discounts, staff discounts, sibling discounts and clergy discounts.

² itrust is an IAPS charity supporting low-income families and families with short-term financial difficulties.

³ Excludes data for schools in Northern Ireland, the Channel Islands and the Isle of Man.

Table 8c. Contributions to fees: day and boarding schools (termly values)

For ISC schools categorised by day and boarding, this table shows the breakdown of contributions to fees by type of contribution.

	Schools with boarders (pupils)	Schools with boarders (value £m)	Day schools (pupils)	Day schools (value £m)	Total (pupils)	Total (value £m)	% of all pupils
The school	78,005	217.80	80,366	140.13	158,371	357.92	28
The school: means-tested: bursaries	19,479	96.13	19,068	69.75	38,547	165.87	6.9
The school: means-tested: scholarships	1,067	4.70	894	1.69	1,961	06.39	0.4
The school: means-tested: eligible families ¹	1,737	5.79	1,173	1.61	2,910	07.39	0.5
The school: non-means-tested: scholarships	33,371	44.12	25,542	23.65	58,913	67.77	10.6
The school: non-means-tested: eligible families ¹	35,099	67.03	41,253	43.36	76,352	110.39	13.7
The school: itrust ²	19	40879.00	25	0.07	44	0.11	0.01
Early Years Funding	4,166	04.25	18,809	21.05	22,975	25.29	4.1
Local Authorities ³	1,342	9.88	4,417	048.93	5,759	58.81	1.1
Government Music and Dance Scheme	1,458	011.76	1	0.01	1,459	11.77	0.3
All other sources	885	03.12	657	01.77	1,542	4.90	0.3
Total	83,357	246.80	99,318	211.88	182,675	458.69	33.5
Number of pupils helped as a % of all pupils	39.3		29.8		33.5		

¹ Includes HM Forces discounts, staff discounts, sibling discounts and clergy discounts.

² itrust is an IAPS charity supporting low-income families and families with short-term financial difficulties.

³ Excludes data for schools in Northern Ireland, the Channel Islands and the Isle of Man.

Table 9. Non-British pupils whose parents live overseas

This table shows the number of non-British pupils whose parents live overseas by country/area of residence.

	Senior	Mixed-age	Junior	Single-sex: boys'	Single-sex: girls'	Co-ed	Schools with boarders	Day schools	Total
France	194	139	50	19	17	347	375	8	383
Germany	938	1,027	11	30	51	1,895	1,964	12	1,976
Russia	657	247	36	17	22	901	910	30	940
Spain	516	542	305	80	123	1,160	1,309	54	1,363
Ireland	27	46	4	19	2	56	76	1	77
Italy	285	126	10	1	11	409	411	10	421
Poland	62	84	6	1	12	139	149	3	152
Romania	74	26	3	1	4	98	101	2	103
Ukraine	455	265	30	16	20	714	697	53	750
Remainder of Europe (EEA)	776	522	47	42	66	1,237	1,316	29	1,345
Remainder of Europe (non-EEA)	484	191	10	22	13	650	663	22	685
Nigeria	511	203	44	26	71	661	717	41	758
Rest of Africa	405	256	26	14	42	631	660	27	687
USA	208	154	30	15	55	322	378	14	392
Rest of North America	92	48	5	8	16	121	140	5	145
Central and South America	356	237	11	9	44	551	593	11	604
Middle East	564	200	12	15	25	736	738	38	776
Hong Kong	3,105	1,855	115	369	855	3,851	4,997	78	5,075
Mainland China	3,561	1,926	337	290	777	4,757	5,595	229	5,824
Taiwan	87	43	2	5	14	113	128	4	132
Japan	298	295	66	40	25	594	651	8	659
South Korea	285	97	18	24	48	328	382	18	400
Malaysia	218	33	3	14	32	208	247	7	254
Thailand	465	160	54	48	65	566	671	8	679
India	164	72	8	19	16	209	231	13	244
Pakistan, Sri Lanka and Bangladesh	35	22	5	1	5	56	55	7	62
Central Asia	301	60	4	5	6	354	350	15	365
Remainder of Far East	649	165	33	47	70	730	812	35	847
Oceania	66	25	6	5	16	76	95	2	97
Total	15,838	9,066	1,291	1,202	2,523	22,470	25,411	784	26,195
As a % of all pupils	12.4%	3.2%	0.9%	2.6%	3.3%	5.2%	11.8%	0.2%	4.7%

Table 10. Non-British pupils whose parents live in the UK

This table shows the number of non-British pupils whose parents live in the UK by country/area of nationality.

	Senior	Mixed-age	Junior	Single-sex: boys'	Single-sex: girls'	Co-ed	Schools with boarders	Day schools	Total
France	409	1,582	606	181	290	2,126	594	2,003	2,597
Germany	274	577	312	136	221	806	448	715	1,163
Russia	217	340	315	82	142	648	347	525	872
Spain	233	823	346	109	178	1,115	333	1,069	1,402
Ireland	431	633	254	129	271	918	568	750	1,318
Italy	377	649	346	159	274	939	402	970	1,372
Poland	112	255	92	24	68	367	153	306	459
Romania	71	142	71	13	26	245	113	171	284
Ukraine	369	611	325	69	182	1,054	660	645	1,305
Remainder of Europe (EEA)	1,052	1,834	1,066	387	663	2,902	1,417	2,535	3,952
Remainder of Europe (non-EEA)	205	367	261	66	120	647	304	529	833
Nigeria	191	464	140	47	84	664	372	423	795
Rest of Africa	218	728	320	74	202	990	532	734	1,266
USA	615	2,391	1,361	300	485	3,582	1,637	2,730	4,367
Rest of North America	105	310	161	32	91	453	209	367	576
Central and South America	106	377	159	26	66	550	234	408	642
Middle East	156	380	243	48	100	631	156	623	779
Hong Kong	814	1,475	313	294	524	1,784	1,525	1,077	2,602
Mainland China	1,108	2,127	1,316	598	1,011	2,942	2,176	2,375	4,551
Taiwan	4	39	29	5	5	62	31	41	72
Japan	130	281	233	45	111	488	216	428	644
South Korea	115	228	183	71	132	323	185	341	526
Malaysia	47	81	46	23	47	104	55	119	174
Thailand	20	33	12	5	6	54	48	17	65
India	242	1,072	470	182	417	1,185	359	1,425	1,784
Pakistan, Sri Lanka and Bangladesh	92	305	97	53	105	336	112	382	494
Central Asia	71	69	55	22	21	152	81	114	195
Remainder of Far East	93	226	152	22	79	370	181	290	471
Oceania	235	428	290	70	161	722	393	560	953
Total	8,112	18,827	9,574	3,272	6,082	27,159	13,841	22,672	36,513
As a % of all pupils	6.4%	6.7%	6.4%	7.2%	8.0%	6.2%	6.4%	6.6%	6.6%

Table 11. New non-British pupils whose parents live overseas

This table shows the number of new non-British pupils whose parents live overseas by country/area of residence.

	Senior	Mixed-age	Junior	Single-sex: boys'	Single-sex: girls'	Co-ed	Schools with boarders	Day schools	Total
France	79	74	38	6	5	180	188	3	191
Germany	629	726	5	16	35	1,309	1,355	5	1,360
Russia	276	90	13	2	4	373	365	14	379
Spain	322	415	269	66	90	850	967	39	1,006
Ireland	7	14	1	7	1	14	22	0	22
Italy	133	70	7	1	4	205	202	8	210
Poland	25	53	4	0	2	80	81	1	82
Romania	30	8	0	0	0	38	38	0	38
Ukraine	178	84	8	3	6	261	260	10	270
Remainder of Europe (EEA)	332	249	25	12	24	570	595	11	606
Remainder of Europe (non-EEA)	252	94	5	6	5	340	338	13	351
Nigeria	172	69	15	8	18	230	236	20	256
Rest of Africa	174	95	7	3	15	258	268	8	276
USA	83	82	12	3	19	155	168	9	177
Rest of North America	62	22	3	3	7	77	84	3	87
Central and South America	255	178	5	4	24	410	434	4	438
Middle East	311	82	4	3	7	387	381	16	397
Hong Kong	1,027	515	40	95	202	1,285	1,550	32	1,582
Mainland China	1,807	959	193	84	348	2,527	2,862	97	2,959
Taiwan	45	19	0	2	5	57	61	3	64
Japan	105	63	26	11	8	175	188	6	194
South Korea	127	42	12	8	14	159	175	6	181
Malaysia	87	13	0	2	12	86	95	5	100
Thailand	187	60	22	14	11	244	263	6	269
India	62	25	2	9	10	70	86	3	89
Pakistan, Sri Lanka and Bangladesh	17	6	3	0	1	25	22	4	26
Central Asia	170	28	0	2	3	193	193	5	198
Remainder of Far East	305	74	10	14	25	350	377	12	389
Oceania	21	17	2	0	5	35	40	0	40
Total	7,280	4,226	731	384	910	10,943	11,894	343	12,237
As a % of all new pupils	23.2%	8.8%	2.6%	4.7%	6.9%	12.6%	24.7%	0.6%	11.3%

Table 12. New non-British pupils whose parents live in the UK

This table shows the number of new non-British pupils whose parents live in the UK by country/area of nationality.

	Senior	Mixed-age	Junior	Single-sex: boys'	Single-sex: girls'	Co-ed	Schools with boarders	Day schools	Total
France	88	266	122	34	34	408	118	358	476
Germany	55	115	52	18	26	178	102	120	222
Russia	49	54	64	14	15	138	59	108	167
Spain	70	168	60	14	36	248	99	199	298
Ireland	89	109	38	27	43	166	110	126	236
Italy	99	110	60	28	45	196	88	181	269
Poland	28	35	18	2	10	69	24	57	81
Romania	19	33	12	3	9	52	30	34	64
Ukraine	75	81	80	14	19	203	120	116	236
Remainder of Europe (EEA)	247	304	238	63	101	625	287	502	789
Remainder of Europe (non-EEA)	54	84	59	13	23	161	75	122	197
Nigeria	57	130	47	13	26	195	92	142	234
Rest of Africa	66	185	93	24	49	271	151	193	344
USA	176	613	457	60	92	1,094	447	799	1,246
Rest of North America	32	71	40	7	20	116	43	100	143
Central and South America	41	103	45	13	15	161	72	117	189
Middle East	58	105	96	16	33	210	48	211	259
Hong Kong	212	363	94	85	136	448	348	321	669
Mainland China	319	519	395	150	234	849	582	651	1,233
Taiwan	2	15	11	1	3	24	16	12	28
Japan	45	80	63	9	36	143	61	127	188
South Korea	29	64	54	18	36	93	52	95	147
Malaysia	14	9	10	5	6	22	11	22	33
Thailand	6	8	0	1	1	12	12	2	14
India	65	271	114	37	104	309	94	356	450
Pakistan, Sri Lanka and Bangladesh	30	79	23	16	32	84	33	99	132
Central Asia	20	21	18	8	1	50	18	41	59
Remainder of Far East	33	56	57	6	20	120	43	103	146
Oceania	63	107	83	14	40	199	118	135	253
Total	2,141	4,158	2,503	713	1,245	6,844	3,353	5,449	8,802
As a % of all new pupils	6.8%	8.7%	8.7%	8.7%	9.4%	7.9%	7.0%	9.1%	8.1%

Table 13. British pupils with parents living overseas

This table shows the number of British pupils whose parents live abroad or serve in HM Forces, as well as the number who are new to their school this year.

British pupils whose parents:	Senior	Mixed-age	Junior	Single-sex: boys'	Single-sex: girls'	Co-ed	Schools with boarders	Day schools	Total
Live abroad	2,075	882	145	290	378	2,434	2,975	127	3,102
Serve in HM Forces	1,398	1,801	1,288	88	236	4,163	3,935	552	4,487
New British pupils whose parents:									
Live abroad	592	310	43	63	87	795	906	39	945
Serve in HM Forces	240	236	267	13	36	694	651	92	743

Table 14. Destination of post-18 school leavers

This table shows the percentage of school leavers in all ISC schools arriving at various destinations post-18.

	Senior	Mixed-age	Single-sex: boys'	Single-sex: girls'	Co-ed	Schools with boarders	Day schools	Total
Non-deferred university entries								
% to UK universities	66.5	71.0	69.6	76.1	67.4	64.4	74.8	68.8
% to overseas universities	5.7	4.4	5.3	4.0	5.2	6.6	3.0	5.0
% to unknown university	2.0	1.6	1.3	0.8	2.0	2.6	0.7	1.8
Deferred university entries								
% to UK universities	8.6	5.0	6.6	5.4	7.0	8.4	4.5	6.7
% to overseas universities	0.2	0.2	0.1	0.1	0.2	0.2	0.1	0.2
% to unknown university (incl. planning post-qualification application)	5.9	4.9	4.1	6.4	5.3	5.4	5.3	5.4
Other								
% to other higher education courses	1.5	1.6	1.2	1.2	1.7	1.7	1.4	1.6
% to further education or training	1.3	2.1	1.4	1.1	1.9	1.6	2.0	1.8
% to re-take A-levels	1.3	0.9	2.6	1.0	0.9	1.0	1.2	1.1
% to employment	1.7	3.5	1.6	1.2	3.0	2.1	3.3	2.6
% to other	2.9	2.2	4.8	1.3	2.5	2.7	2.4	2.6
% to unknown	2.5	2.6	1.5	1.3	2.9	3.3	1.5	2.5
Total number recorded	21,733	23,399	4,032	6,464	34,636	25,672	19,460	45,132

Table 15. Destination of pupils going to non-UK universities

This table shows the destination of post-18 school leavers going to non-UK universities from ISC schools.

	Senior	Mixed-age	Single-sex: boys'	Single-sex: girls'	Co-ed	Schools with boarders	Day schools	Total
USA	612	485	147	144	806	755	342	1,097
Canada	87	84	17	21	133	105	66	171
Spain	89	72	2	16	143	124	37	161
Netherlands	54	61	5	12	98	93	22	115
Hong Kong	78	33	6	14	91	110	1	111
France	34	62	2	3	91	54	42	96
Japan	23	45	1	3	64	64	4	68
Germany	39	24	3	4	56	60	3	63
Australia	31	30	3	3	55	58	3	61
Italy	34	24	8	5	45	44	14	58
Switzerland	31	17	3	3	42	47	1	48
Ireland	26	10	7	5	24	29	7	36
Bulgaria	10	11	2	2	17	4	17	21
Cyprus	6	10	1	4	11	10	6	16
UAE	9	5	0	0	14	13	1	14
Hungary	10	2	1	4	7	9	3	12
Poland	4	8	0	1	11	9	3	12
Thailand	10	2	1	0	11	12	0	12
Czechia	5	5	0	0	10	9	1	10
Belgium	5	4	0	3	6	7	2	9
Austria	1	7	0	1	7	8	0	8
Mexico	1	5	1	0	5	5	1	6
Israel	2	4	0	0	6	2	4	6
China	2	3	1	0	4	5	0	5
Other countries	35	28	0	13	50	45	18	63
Total	1,238	1,041	211	261	1,807	1,681	598	2,279
% of all pupils going to higher education	6.3%	5.0%	5.9%	4.3%	5.9%	7.3%	3.4%	5.6%

Table 16. Size of schools

This table shows all ISC schools by type and various size brackets.

School size	Senior	Mixed-age	Junior	Single-sex: boys'	Single-sex: girls'	Co-ed	Schools with boarders	Day schools	Total
1 - 50	25	22	17	2	2	60	4	60	64
51 - 100	18	31	66	7	6	102	15	100	115
101 - 150	21	26	121	10	9	149	24	144	168
151 - 200	15	44	88	13	11	123	34	113	147
201 - 250	17	35	87	8	16	115	47	92	139
251 - 300	9	21	75	11	8	86	22	83	105
301 - 350	7	28	62	10	11	76	29	68	97
351 - 400	20	22	39	9	9	63	38	43	81
401 - 450	9	21	30	3	10	47	29	31	60
451 - 500	12	26	18	2	8	46	21	35	56
501 - 550	12	24	9	1	8	36	21	24	45
551 - 600	19	18	7	1	7	36	23	21	44
601 - 650	8	14	3	0	6	19	16	9	25
651 - 700	10	17	4	1	5	25	18	13	31
701 - 750	3	18	1	0	4	18	9	13	22
751 - 800	11	18	0	2	8	19	12	17	29
801 - 850	11	12	2	5	3	17	16	9	25
851 - 900	11	14	0	0	4	21	14	11	25
901 - 950	8	8	0	1	3	12	7	9	16
951 - 1000	6	14	0	1	5	14	5	15	20
1001 - 1050	4	7	0	0	3	8	3	8	11
1051 - 1100	2	10	0	2	3	7	6	6	12
1101 - 1150	7	6	1	1	3	10	4	10	14
1151 - 1200	0	11	0	2	1	8	0	11	11
1201 - 1250	4	7	0	2	2	7	7	4	11
1251 - 1300	0	6	0	0	0	6	3	3	6
1301 - 1350	2	6	0	3	0	5	3	5	8
1351 - 1400	1	2	0	0	0	3	2	1	3
1401 - 1450	0	2	0	0	0	2	0	2	2
1451 - 1500	0	3	0	1	0	2	0	3	3
1501 - 1550	0	3	0	1	0	2	1	2	3
1551 - 1600	0	2	0	1	0	1	1	1	2
1601 - 1650	0	0	0	0	0	0	0	0	0
1651 - 1700	0	4	0	1	0	3	1	3	4
1701+	0	7	0	0	0	7	3	4	7
Total	272	509	630	101	155	1,155	438	973	1,411
Mean size	468	550	237	452	489	377	492	351	394
Median size	421	470	214	286	428	267	408	233	284

Table 17. Boarders as a percentage of all pupils

This table shows all ISC schools grouped by type and percentage of boarders.

% boarders	Senior	Mixed-age	Junior	Single-sex: boys'	Single-sex: girls'	Co-ed	Schools with boarders	Day schools	Total
0	114	346	513	68	118	787	0	973	973
1 - 4	4	15	15	2	2	30	34	0	34
5 - 9	10	30	30	5	2	63	70	0	70
10 - 14	6	38	19	4	5	54	63	0	63
15 - 19	6	20	14	2	3	35	40	0	40
20 - 24	7	16	8	1	1	29	31	0	31
25 - 29	7	9	6	0	2	20	22	0	22
30 - 34	8	6	6	1	4	15	20	0	20
35 - 39	8	6	6	2	0	18	20	0	20
40 - 44	10	4	3	1	3	13	17	0	17
45 - 49	11	3	1	0	3	12	15	0	15
50 - 54	6	2	2	2	1	7	10	0	10
55 - 59	8	4	2	2	0	12	14	0	14
60 - 64	4	2	0	0	1	5	6	0	6
65 - 69	4	4	0	1	0	7	8	0	8
70 - 74	7	1	1	1	1	7	9	0	9
75 - 79	13	1	0	0	2	12	14	0	14
80 - 84	9	0	1	1	1	8	10	0	10
85 - 89	5	0	0	0	2	3	5	0	5
90 - 94	13	0	0	1	3	9	13	0	13
95 - 99	8	0	1	2	0	7	9	0	9
100	4	2	2	5	1	2	8	0	8
Total	272	509	630	101	155	1,155	438	973	1,411
% boarders	33.3%	6.3%	3.7%	14.1%	9.3%	12.0%	30.5%	0.0%	11.8%

Table 18. Boys as a percentage of all pupils

This table shows all ISC schools grouped by type and percentage of boys.

% boys	Senior	Mixed-age	Junior	Single-sex: boys'	Single-sex: girls'	Co-ed	Schools with boarders	Day schools	Total
0	46	64	23	0	133	0	35	98	133
1 - 4	0	18	7	0	15	10	9	16	25
5 - 9	2	4	1	0	3	4	2	5	7
10 - 14	0	2	5	0	3	4	1	6	7
15 - 19	1	2	2	0	1	4	2	3	5
20 - 24	4	4	0	0	0	8	3	5	8
25 - 29	1	2	3	0	0	6	0	6	6
30 - 34	2	2	4	0	0	8	3	5	8
35 - 39	4	8	12	0	0	24	6	18	24
40 - 44	8	11	31	0	0	50	11	39	50
45 - 49	18	59	101	0	0	178	40	138	178
50 - 54	50	142	187	0	0	379	124	255	379
55 - 59	52	91	131	0	0	274	108	166	274
60 - 64	23	38	36	0	0	97	39	58	97
65 - 69	12	14	15	0	0	41	10	31	41
70 - 74	3	9	2	0	0	14	2	12	14
75 - 79	6	4	3	0	0	13	1	12	13
80 - 84	3	4	4	0	0	11	2	9	11
85 - 89	5	4	6	1	0	14	2	13	15
90 - 94	3	5	3	2	0	9	1	10	11
95 - 99	3	2	9	7	0	7	6	8	14
100	26	20	45	91	0	0	31	60	91
Total	272	509	630	101	155	1,155	438	973	1,411
% Boys	52.4%	47.5%	55.3%	99.7%	0.3%	54.4%	53.4%	49.1%	50.7%

Table 19. Teacher numbers¹

This table shows the number of teachers in all ISC schools by type of school.

Full-time	Senior	Mixed-age	Junior	Single-sex: boys'	Single-sex: girls'	Co-ed	Schools with boarders	Day schools	Total
Men	7,054	9,602	3,393	2,567	1,737	15,745	10,371	9,678	20,049
Women	6,573	14,471	8,016	1,702	4,760	22,598	11,663	17,397	29,060
Total	13,627	24,073	11,409	4,269	6,497	38,343	22,034	27,075	49,109
Part-time									
Men	1,285	1,702	582	404	437	2,728	1,628	1,941	3,569
Women	3,548	7,602	3,783	736	3,067	11,130	5,625	9,308	14,933
Total	4,833	9,304	4,365	1,140	3,504	13,858	7,253	11,249	18,502
Part-time hours									
Men	21,962	31,412	10,621	6,753	7,779	49,463	28,928	35,067	63,995
Women	66,583	153,159	76,504	15,124	58,803	222,319	109,096	187,150	296,246
Total	88,545	184,571	87,125	21,877	66,582	271,782	138,024	222,217	360,241
Overall full-time equivalent (32.5 hours = 1 full-time)									
Men	7,730	10,569	3,720	2,775	1,976	17,267	11,261	10,757	22,018
Women	8,622	19,184	10,370	2,167	6,569	29,439	15,020	23,155	38,175
Total	16,351	29,752	14,090	4,942	8,546	46,706	26,281	33,912	60,193

¹ Excludes nursery staff.

Table 20. Teaching assistant numbers¹

This table shows the number of teaching assistants in all ISC schools by type of school.

Full-time	Senior	Mixed-age	Junior	Single-sex: boys'	Single-sex: girls'	Co-ed	Schools with boarders	Day schools	Total
Men	148	451	408	125	52	830	320	687	1,007
Women	438	2,775	3,385	400	578	5,620	1,588	5,010	6,598
Total	586	3,226	3,793	525	630	6,450	1,908	5,697	7,605
Part-time									
Men	57	191	113	31	26	304	135	226	361
Women	470	2,484	2,486	271	622	4,547	1,604	3,836	5,440
Total	527	2,675	2,599	302	648	4,851	1,739	4,062	5,801
Part-time hours									
Men	906	3,726	2,155	534	464	5,790	2,488	4,299	6,787
Women	8,237	52,209	52,273	5,839	12,031	94,848	32,394	80,324	112,718
Total	9,143	55,934	54,428	6,373	12,495	100,638	34,883	84,623	119,505
Overall full-time equivalent (32.5 hours = 1 full-time)									
Men	176	566	474	141	66	1,008	397	819	1,216
Women	691	4,381	4,993	580	948	8,538	2,585	7,481	10,066
Total	867	4,947	5,468	721	1,014	9,547	2,981	8,301	11,282

¹ Excludes nursery staff.

Table 21. Pupil-teacher ratios

This table shows the pupil and teacher gender ratios, along with the overall pupil-teacher ratio in ISC schools.

Pupils	Senior	Mixed-age	Junior	Single-sex: boys'	Single-sex: girls'	Co-ed	Schools with boarders	Day schools	Total
Boys	66,760	132,964	82,588	45,447	214	236,651	114,978	167,334	282,312
Girls	60,539	146,980	66,720	157	75,649	198,433	100,434	173,805	274,239
Total	127,299	279,944	149,308	45,604	75,863	435,084	215,412	341,139	556,551
Gender ratios									
Boys:girls (pupils)	1.1:1	0.9:1	1.2:1	289.5:1	0.0:1	1.2:1	1.1:1	1.0:1	1.0:1
Men:women (teachers) ¹	0.9:1	0.6:1	0.4:1	1.3:1	0.3:1	0.6:1	0.8:1	0.5:1	0.6:1
Men:women (teaching assistants) ¹	0.3:1	0.1:1	0.1:1	0.2:1	0.1:1	0.1:1	0.2:1	0.1:1	0.1:1
Pupil-teacher ratio²	7.8:1	9.1:1	9.2:1	9.1:1	8.7:1	8.7:1	7.9:1	9.4:1	8.8:1

¹ Excludes nursery staff.

² Pupil-teacher ratios exclude nursery teachers and nursery pupils.

Table 22. Changes to full-time teachers

This table shows the number of full-time teachers coming into ISC schools (broken down by previous occupation) and leaving ISC schools (broken down by destination).

Arriving from	Senior	Mixed-age	Junior	Single-sex: boys'	Single-sex: girls'	Co-ed	Schools with boarders	Day schools	Total
Independent schools	734	1,128	668	188	406	1,936	1,121	1,409	2,530
State-funded schools	597	1,450	557	174	344	2,086	979	1,625	2,604
ITT at university or training college	85	159	57	21	42	238	131	170	301
New graduates	130	118	57	27	56	222	126	179	305
Industry	86	120	25	13	42	176	119	112	231
Outside the UK	112	235	82	35	41	353	189	240	429
Retirement	16	22	6	1	8	35	19	25	44
Maternity leave	109	275	119	29	98	376	168	335	503
Part-time	198	319	140	44	98	515	267	390	657
Other	318	429	159	40	113	753	506	400	906
Total	2,385	4,255	1,870	572	1,248	6,690	3,625	4,885	8,510
Going to									
Independent schools	564	818	465	147	248	1,452	806	1,041	1,847
State-funded schools	233	551	226	49	86	875	393	617	1,010
Industry	92	187	89	25	39	304	148	220	368
Outside the UK	136	244	126	39	71	396	227	279	506
Retirement	179	338	186	69	87	547	323	380	703
Maternity leave	196	400	264	68	154	638	281	579	860
Part-time	256	444	235	83	153	699	406	529	935
Other	552	1,000	437	166	309	1,514	946	1,043	1,989
Total	2,208	3,982	2,028	646	1,147	6,425	3,530	4,688	8,218
Net gain									
Independent schools	170	310	203	41	158	484	315	368	683
State-funded schools	364	899	331	125	258	1,211	586	1,008	1,594
Industry	-6	-67	-64	-12	3	-128	-29	-108	-137
Outside the UK	-24	-9	-44	-4	-30	-43	-38	-39	-77
Retirement	-163	-316	-180	-68	-79	-512	-304	-355	-659
Maternity leave	-87	-125	-145	-39	-56	-262	-113	-244	-357
Part-time	-58	-125	-95	-39	-55	-184	-139	-139	-278
Other	-234	-571	-278	-126	-196	-761	-440	-643	-1,083
Total	177	273	-158	-74	101	265	95	197	292
Full-time teachers									
Turnover as % of full-time teachers	16.2	16.5	17.8	15.1	17.7	16.8	16.0	17.3	16.7
Gain as % of full-time teachers	1.3	1.1	-1.4	-1.7	1.6	0.7	0.4	0.7	0.6
Total	13,627	24,073	11,409	4,269	6,497	38,343	22,034	27,075	49,109

Table 23. SEND pupils¹

This table shows the number of pupils who have been identified with SEND.

Types of SEND	Senior	Mixed-age	Junior	Single-sex: boys'	Single-sex: girls'	Co-ed	Schools with boarders	Day schools	Total
Specific learning difficulty (SpLD)	17,619	28,338	9,875	3,693	7,117	45,022	26,710	29,122	55,832
Moderate learning difficulty (MLD)	1,184	1,640	1,159	576	322	3,085	1,382	2,601	3,983
Severe learning difficulty (SLD)	81	142	102	11	21	293	132	193	325
Profound and multiple learning difficulty (PMLD)	38	87	30	1	28	126	59	96	155
Social, emotional and mental health (SEMH)	6,613	12,014	3,517	1,614	3,256	17,274	8,457	13,687	22,144
Speech, language and communication needs (SLCN)	1,002	4,362	3,606	683	662	7,625	2,595	6,375	8,970
Hearing impairment (HI)	434	1,114	455	152	294	1,557	706	1,297	2,003
Visual impairment (VI)	609	1,178	384	278	225	1,668	849	1,322	2,171
Multi-Sensory impairment (MSI)	132	339	194	30	58	577	221	444	665
Physical difficulty (PD)	781	1,603	459	271	410	2,162	1,084	1,759	2,843
Autistic spectrum disorder (ASD)	3,008	7,375	2,344	982	1,267	10,478	4,378	8,349	12,727
Other difficulty/disability	1,680	3,905	1,322	673	999	5,235	3,082	3,825	6,907
SEN support but no specialist assessment of type of need	2,591	7,445	5,786	1,513	1,693	12,616	5,699	10,123	15,822
Total	30,171	56,490	24,493	8,822	13,539	88,793	47,038	64,116	111,154
% pupils with SEND	23.7%	20.2%	16.4%	19.3%	17.8%	20.4%	21.8%	18.8%	20.0%

¹ Some pupils have more than one SEND; they are counted under each individual category of SEND, but are counted only once in the total.

Appendix Two Comparative Tables

Tables in Appendix Two show comparative figures for the 1,356 schools that participated in the Census in both 2023 and 2024. In each table the 2024 figures are printed in bold and the 2023 figures are printed in italics. Figures highlighted in yellow show the percentage change between the two years. Where schools are categorised by age, gender and by day and boarding, the categorisation is based on the school as it is in 2024; in a small number of cases this will differ from how the school would have been categorised in 2023.

Table 1. Changes to pupil numbers by category of school

This table shows total school and pupil numbers for schools that participated in the Census in both 2023 and 2024, including a breakdown by category of school. The girls at "single-sex: boys" schools and the boys at "single-sex: girls" schools are all in the nursery.

Schools	Senior	Mixed-age	Junior	Single-sex: boys'	Single-sex: girls'	Co-ed	Schools with boarders	Day schools	Total
Number of schools	253	491	612	95	150	1,111	429	927	1,356
Pupils									
Boarders (boys)	21,935	9,069	3,529	6,411	0	28,122	34,533	0	34,533
	<i>22,294</i>	<i>9,303</i>	<i>3,732</i>	<i>6,458</i>	<i>0</i>	<i>28,871</i>	<i>35,273</i>	<i>56</i>	<i>35,329</i>
	-1.6%	-2.5%	-5.4%	-0.7%	0.0%	-2.6%	-2.1%	-100.0%	-2.3%
Boarders (girls)	19,907	8,266	1,980	0	7,031	23,122	30,153	0	30,153
	<i>20,091</i>	<i>8,514</i>	<i>2,181</i>	<i>0</i>	<i>7,278</i>	<i>23,508</i>	<i>30,728</i>	<i>58</i>	<i>30,786</i>
	-0.9%	-2.9%	-9.2%	0.0%	-3.4%	-1.6%	-1.9%	-100.0%	-2.1%
Day pupils (boys)	43,450	122,675	77,846	37,250	214	206,507	79,075	164,896	243,971
	<i>42,961</i>	<i>122,265</i>	<i>78,565</i>	<i>37,427</i>	<i>218</i>	<i>206,146</i>	<i>78,615</i>	<i>165,176</i>	<i>243,791</i>
	1.1%	0.3%	-0.9%	-0.5%	-1.8%	0.2%	0.6%	-0.2%	0.1%
Day pupils (girls)	38,807	138,910	63,660	157	67,292	173,928	69,175	172,202	241,377
	<i>38,391</i>	<i>139,098</i>	<i>63,437</i>	<i>154</i>	<i>67,675</i>	<i>173,097</i>	<i>69,064</i>	<i>171,862</i>	<i>240,926</i>
	1.1%	-0.1%	0.4%	1.9%	-0.6%	0.5%	0.2%	0.2%	0.2%
Total (boys)	65,385	131,744	81,375	43,661	214	234,629	113,608	164,896	278,504
	<i>65,255</i>	<i>131,568</i>	<i>82,297</i>	<i>43,885</i>	<i>218</i>	<i>235,017</i>	<i>113,888</i>	<i>165,232</i>	<i>279,120</i>
	0.2%	0.1%	-1.1%	-0.5%	-1.8%	-0.2%	-0.2%	-0.2%	-0.2%
Total (girls)	58,714	147,176	65,640	157	74,323	197,050	99,328	172,202	271,530
	<i>58,482</i>	<i>147,612</i>	<i>65,618</i>	<i>154</i>	<i>74,953</i>	<i>196,605</i>	<i>99,792</i>	<i>171,920</i>	<i>271,712</i>
	0.4%	-0.3%	0.0%	1.9%	-0.8%	0.2%	-0.5%	0.2%	-0.1%
Total	124,099	278,920	147,015	43,818	74,537	431,679	212,936	337,098	550,034
	<i>123,737</i>	<i>279,180</i>	<i>147,915</i>	<i>44,039</i>	<i>75,171</i>	<i>431,622</i>	<i>213,680</i>	<i>337,152</i>	<i>550,832</i>
	0.3%	-0.1%	-0.6%	-0.5%	-0.8%	0.0%	-0.3%	0.0%	-0.1%

Table 2. Changes to pupil numbers by age

This table shows the number of pupils in ISC schools that participated in the Census in both 2023 and 2024 by age, gender and day/boarding.

Age	Boarders (boys)	Day pupils (boys)	Boarders (girls)	Day pupils (girls)	Total
0-2	0	6,002	0	6,186	12,188
	0	5,804	0	5,924	11,728
		3.4%		4.4%	3.9%
3	0	8,130	0	8,304	16,434
	0	8,138	0	8,245	16,383
		-0.1%		0.7%	0.3%
4	0	10,149	0	10,091	20,240
	0	10,498	0	10,108	20,606
		-3.3%		-0.2%	-1.8%
5	0	10,949	0	10,579	21,528
	0	10,964	1	10,883	21,848
		-0.1%	-100.0%	-2.8%	-1.5%
6	3	11,609	2	11,485	23,099
	1	11,883	1	11,536	23,421
	200.0%	-2.3%	100.0%	-0.4%	-1.4%
7	51	13,354	50	13,038	26,493
	48	13,160	58	13,223	26,489
	6.3%	1.5%	-13.8%	-1.4%	0.0%
8	206	14,032	139	14,094	28,471
	255	14,360	195	13,556	28,366
	-19.2%	-2.3%	-28.7%	4.0%	0.4%
9	435	15,256	303	14,663	30,657
	506	15,443	295	14,992	31,236
	-14.0%	-1.2%	2.7%	-2.2%	-1.9%
10	737	16,448	442	15,844	33,471
	764	16,852	530	16,349	34,495
	-3.5%	-2.4%	-16.6%	-3.1%	-3.0%
11	1,488	21,103	1,458	20,628	44,677
	1,669	21,219	1,486	21,003	45,377
	-10.8%	-0.5%	-1.9%	-1.8%	-1.5%
12	1,982	21,989	1,790	21,475	47,236
	2,021	21,482	1,977	21,191	46,671
	-1.9%	2.4%	-9.5%	1.3%	1.2%
13	3,988	20,951	3,232	21,170	49,341
	4,140	20,409	3,373	20,374	48,296
	-3.7%	2.7%	-4.2%	3.9%	2.2%
14	4,826	20,602	4,105	20,608	50,141
	5,118	21,000	4,300	21,175	51,593
	-5.7%	-1.9%	-4.5%	-2.7%	-2.8%
15	5,822	20,972	4,953	21,146	52,893
	5,870	20,607	4,891	20,503	51,871
	-0.8%	1.8%	1.3%	3.1%	2.0%
16	7,024	16,305	6,484	15,742	45,555
	6,809	15,919	6,261	16,032	45,021
	3.2%	2.4%	3.6%	-1.8%	1.2%
17	6,626	14,897	6,002	15,132	42,657
	6,772	14,621	6,213	14,668	42,274
	-2.2%	1.9%	-3.4%	3.2%	0.9%
18	1,202	1,038	1,065	972	4,277
	1,203	1,049	1,083	902	4,237
	-0.1%	-1.0%	-1.7%	7.8%	0.9%
19	143	185	128	220	676
	153	185	122	232	692
	-6.5%	0.0%	4.9%	-5.2%	-2.3%
Total	34,533	243,971	30,153	241,377	550,034
	35,329	243,593	30,786	240,896	550,604
	-2.3%	0.2%	-2.1%	0.2%	-0.1%

Table 3. Changes to pupil numbers by year group

This table shows the number of pupils in ISC schools that participated in the Census in both 2023 and 2024 by year group, gender and day/boarding.

Year group	Boarders (boys)	Day pupils (boys)	Boarders (girls)	Day pupils (girls)	Total
Nursery	0	14,425	0	14,598	29,023
	0	14,092	0	14,214	28,306
		2.4%		2.7%	2.5%
Reception	0	10,108	0	10,100	20,208
	0	10,483	0	10,093	20,576
		-3.6%		0.1%	-1.8%
Year 1	0	11,004	0	10,593	21,597
	0	10,975	1	10,871	21,847
		0.3%	-100.0%	-2.6%	-1.1%
Year 2	1	11,620	2	11,516	23,139
	0	11,922	1	11,592	23,515
		-2.5%	100.0%	-0.7%	-1.6%
Year 3	49	13,369	50	13,059	26,527
	47	13,158	57	13,222	26,484
	4.3%	1.6%	-12.3%	-1.2%	0.2%
Year 4	235	14,038	143	14,073	28,489
	264	14,365	198	13,537	28,364
	-11.0%	-2.3%	-27.8%	4.0%	0.4%
Year 5	444	15,298	304	14,692	30,738
	511	15,480	297	14,998	31,286
	-13.1%	-1.2%	2.4%	-2.0%	-1.8%
Year 6	769	16,453	442	15,846	33,510
	750	16,779	507	16,288	34,324
	2.5%	-1.9%	-12.8%	-2.7%	-2.4%
Year 7	1,515	21,214	1,474	20,639	44,842
	1,721	21,368	1,512	20,965	45,566
	-12.0%	-0.7%	-2.5%	-1.6%	-1.6%
Year 8	2,025	21,950	1,808	21,443	47,226
	2,051	21,439	2,003	21,172	46,665
	-1.3%	2.4%	-9.7%	1.3%	1.2%
Year 9	4,120	20,917	3,370	21,136	49,543
	4,342	20,540	3,464	20,416	48,762
	-5.1%	1.8%	-2.7%	3.5%	1.6%
Year 10	5,273	20,755	4,352	20,781	51,161
	5,457	21,148	4,616	21,361	52,582
	-3.4%	-1.9%	-5.7%	-2.7%	-2.7%
Year 11	5,774	21,068	4,905	21,175	52,922
	5,864	20,632	4,701	20,489	51,686
	-1.5%	2.1%	4.3%	3.3%	2.4%
Year 12	7,475	16,143	6,964	15,744	46,326
	7,371	15,859	6,934	16,068	46,232
	1.4%	1.8%	0.4%	-2.0%	0.2%
Year 13	6,853	15,613	6,339	15,978	44,783
	6,951	15,353	6,495	15,610	44,409
	-1.4%	1.7%	-2.4%	2.4%	0.8%
Total	34,533	243,975	30,153	241,373	550,034
	35,329	243,593	30,786	240,896	550,604
	-2.3%	0.2%	-2.1%	0.2%	-0.1%

Table 4. Changes to new pupil numbers by year group

This table shows the number of new pupils in ISC schools that participated in the Census in both 2023 and 2024 by year group, gender and day/boarding.

Year group	Boarders (boys)	Day pupils (boys)	Boarders (girls)	Day pupils (girls)	Total
Nursery	0	7,243	0	7,237	14,480
	0	7,152	0	7,168	14,320
		1.3%		1.0%	1.1%
Reception	0	4,524	0	4,524	9,048
	0	4,774	0	4,561	9,335
		-5.2%		-0.8%	-3.1%
Year 1	0	1,079	0	1,094	2,173
	0	1,307	0	1,245	2,552
		-17.4%		-12.1%	-14.9%
Year 2	1	1,186	0	1,253	2,440
	0	1,352	0	1,323	2,675
		-12.3%		-5.3%	-8.8%
Year 3	29	2,904	21	2,680	5,634
	27	3,046	28	2,784	5,885
	7.4%	-4.7%	-25.0%	-3.7%	-4.3%
Year 4	115	1,773	52	1,607	3,547
	131	1,947	68	1,542	3,688
	-12.2%	-8.9%	-23.5%	4.2%	-3.8%
Year 5	124	1,706	99	1,865	3,794
	148	1,891	82	1,904	4,025
	-16.2%	-9.8%	20.7%	-2.0%	-5.7%
Year 6	207	1,666	127	1,475	3,475
	193	1,802	126	1,660	3,781
	7.3%	-7.5%	0.8%	-11.1%	-8.1%
Year 7	708	11,364	965	11,759	24,796
	734	11,532	965	12,036	25,267
	-3.5%	-1.5%	0.0%	-2.3%	-1.9%
Year 8	387	1,358	401	1,415	3,561
	346	1,373	429	1,587	3,735
	11.9%	-1.1%	-6.5%	-10.8%	-4.7%
Year 9	3,427	3,982	2,211	2,879	12,499
	3,603	4,099	2,289	2,886	12,877
	-4.9%	-2.9%	-3.4%	-0.2%	-2.9%
Year 10	1,335	938	1,322	1,247	4,842
	1,338	1,078	1,415	1,416	5,247
	-0.2%	-13.0%	-6.6%	-11.9%	-7.7%
Year 11	820	346	882	336	2,384
	866	343	865	369	2,443
	-5.3%	0.9%	2.0%	-8.9%	-2.4%
Year 12	2,992	2,326	3,711	3,483	12,512
	2,928	2,147	3,464	3,688	12,227
	2.2%	8.3%	7.1%	-5.6%	2.3%
Year 13	211	365	221	405	1,202
	230	353	269	417	1,269
	-8.3%	3.4%	-17.8%	-2.9%	-5.3%
Total	10,356	42,760	10,012	43,259	106,387
	10,544	44,196	10,000	44,586	109,326
	-1.8%	-3.2%	0.1%	-3.0%	-2.7%

Table 5. Changes to pupil numbers by region

For ISC schools that participated in the Census in both 2023 and 2024, this table shows the number of pupils by region. Please see Appendix Three, Figure 1 for definitions of regions.

Region ¹	No. of schools	Boarders (boys)	Day pupils (boys)	Boarders (girls)	Day pupils (girls)	Total boarders	Total day pupils	Total pupils
London	298	1,842	53,986	635	57,127	2,477	111,113	113,590
	298	1,820	53,932	626	56,721	2,446	110,653	113,099
		1.2%	0.1%	1.4%	0.7%	1.3%	0.4%	0.4%
South Central	220	9,624	30,597	8,584	31,496	18,208	62,093	80,301
	220	9,810	30,388	8,761	31,250	18,571	61,638	80,209
		-1.9%	0.7%	-2.0%	0.8%	-2.0%	0.7%	0.1%
South East	191	6,432	34,330	6,283	32,405	12,715	66,735	79,450
	191	6,600	34,181	6,385	32,311	12,985	66,492	79,477
		-2.5%	0.4%	-1.6%	0.3%	-2.1%	0.4%	0.0%
East	149	3,049	30,152	2,982	28,392	6,031	58,544	64,575
	149	3,074	30,068	3,041	28,391	6,115	58,459	64,574
		-0.8%	0.3%	-1.9%	0.0%	-1.4%	0.1%	0.0%
West Midlands	102	2,443	16,285	2,203	16,036	4,646	32,321	36,967
	102	2,463	16,233	2,189	15,952	4,652	32,185	36,837
		-0.8%	0.3%	0.6%	0.5%	-0.1%	0.4%	0.4%
South West	92	4,138	14,214	3,759	14,314	7,897	28,528	36,425
	92	4,231	14,245	3,872	14,395	8,103	28,640	36,743
		-2.2%	-0.2%	-2.9%	-0.6%	-2.5%	-0.4%	-0.9%
North West	87	1,231	17,419	917	16,941	2,148	34,360	36,508
	87	1,290	17,503	944	16,802	2,234	34,305	36,539
		-4.6%	-0.5%	-2.9%	0.8%	-3.8%	0.2%	-0.1%
East Midlands	68	2,103	10,461	1,496	10,551	3,599	21,012	24,611
	68	2,323	10,484	1,550	10,587	3,873	21,071	24,944
		-9.5%	-0.2%	-3.5%	-0.3%	-7.1%	-0.3%	-1.3%
Yorkshire and Humber	61	1,279	11,855	1,544	11,598	2,823	23,453	26,276
	61	1,199	11,974	1,536	11,667	2,735	23,641	26,376
		6.7%	-1.0%	0.5%	-0.6%	3.2%	-0.8%	-0.4%
Scotland	34	1,275	11,315	990	11,453	2,265	22,768	25,033
	34	1,326	11,461	1,061	11,714	2,387	23,175	25,562
		-3.8%	-1.3%	-6.7%	-2.2%	-5.1%	-1.8%	-2.1%
Wales	18	685	2,984	530	3,053	1,215	6,037	7,252
	18	724	2,999	542	3,144	1,266	6,143	7,409
		-5.4%	-0.5%	-2.2%	-2.9%	-4.0%	-1.7%	-2.1%
North East	17	180	3,481	111	3,648	291	7,129	7,420
	17	195	3,437	131	3,614	326	7,051	7,377
		-7.7%	1.3%	-15.3%	0.9%	-10.7%	1.1%	0.6%
AIP²	1,356	34,533	243,971	30,153	241,377	64,686	485,348	550,034
	1,356	35,329	243,791	30,786	240,926	66,115	484,717	550,832
		-2.3%	0.1%	-2.1%	0.2%	-2.2%	0.1%	-0.1%

¹ Northern Ireland, the Channel Islands and the Isle of Man are not listed due to the small number of schools in these regions.

² The total includes data for schools in Northern Ireland, the Channel Islands and the Isle of Man.

Table 6. Changes to fees by region

For ISC schools that participated in the census in both 2023 and 2024, this table shows the average termly fees by region. Please see Appendix Three, Figure 1 for definitions of regions.

Region ¹	Boarding fee	Day fee (boarding schools)	Day fee (day schools)
London	£15,901	£10,893	£7,244
	£14,692	£10,145	£6,711
	8.2%	7.4%	7.9%
South Central	£14,822	£8,274	£5,986
	£13,602	£7,685	£5,561
	9.0%	7.7%	7.6%
South East	£14,469	£8,648	£6,412
	£13,318	£7,987	£5,982
	8.6%	8.3%	7.2%
East	£13,342	£7,750	£6,211
	£12,273	£7,179	£5,715
	8.7%	8.0%	8.7%
West Midlands	£14,346	£6,951	£4,977
	£13,259	£6,442	£4,600
	8.2%	7.9%	8.2%
South West	£14,264	£7,615	£5,335
	£12,970	£6,760	£4,872
	10.0%	12.7%	9.5%
North West	£12,261	£6,053	£4,343
	£11,329	£5,647	£4,033
	8.2%	7.2%	7.7%
East Midlands	£14,127	£8,265	£5,152
	£13,012	£7,602	£4,792
	8.6%	8.7%	7.5%
Yorkshire and Humber	£8,659	£5,467	£4,894
	£8,125	£5,078	£4,569
	6.6%	7.7%	7.1%
Scotland	£14,006	£7,800	£5,131
	£12,659	£7,076	£4,676
	10.6%	10.2%	9.7%
Wales	£14,639	£6,014	£4,821
	£13,399	£5,449	£4,503
	9.3%	10.4%	7.1%
North East	£10,979	£5,559	£4,999
	£9,524	£5,009	£4,660
	15.3%	11.0%	7.3%
All²	£14,175	£7,848	£5,908
	£13,002	£7,215	£5,470
	9.0%	8.8%	8.0%

¹ Northern Ireland, the Channel Islands and the Isle of Man are not listed due to the small number of schools in these regions.

² The total includes data for schools in Northern Ireland, the Channel Islands and the Isle of Man.

Table 7. Changes to fees by school type and age group

For ISC schools that participated in the census in both 2023 and 2024, this table shows average termly fees for different age groups.

	Boarding fee	Day fee (boarding schools)	Day fee (day schools)
Sixth form	£14,805	£8,823	£6,564
	£13,667	£8,198	£6,036
	8.3%	7.6%	8.8%
Senior	£13,983	£8,298	£6,340
	£12,790	£7,651	£5,868
	9.3%	8.4%	8.0%
Junior	£10,219	£6,353	£5,499
	£9,338	£5,781	£5,114
	9.4%	9.9%	7.5%
Nursery		£3,677	£4,421
		£3,585	£4,047
		2.6%	9.2%
Overall including nursery	£14,175	£7,848	£5,908
	£13,002	£7,215	£5,470
	9.0%	8.8%	8.0%

Table 8a. Changes to contributions to fees: senior, mixed-age and junior schools (termly values)

For ISC schools that participated in the Census in both 2023 and 2024, this table shows the breakdown of contributions to fees by type of contribution.

	Senior (pupils)	Senior (value £m)	Mixed-age (pupils)	Mixed-age (value £m)	Junior (pupils)	Junior (value £m)	Total (pupils)	Total (value £m)	% of all pupils
The school									
	41,899	136.2	83,025	172.7	30,992	43.8	156,614	354.4	28.5
	41,778	126.6	84,086	161.3	30,971	41.3	159,103	334.2	28.9
	0.3%	7.6%	-1.3%	7.1%	0.1%	5.9%	-1.6%	6.0%	-1.4%
The school: means-tested: bursaries									
	12,101	71.5	20,727	78.1	5,166	14.0	38,244	165.0	7.0
	11,947	64.6	21,198	73.3	5,295	13.4	39,226	154.6	7.1
	1.3%	10.6%	-2.2%	6.6%	-2.4%	4.9%	-2.5%	6.7%	-2.4%
The school: means-tested: scholarships									
	843	4.3	802	1.4	218	0.5	1,863	6.3	0.3
	834	3.4	1,047	2.1	157	0.3	2,120	5.9	0.4
	1.1%	26.4%	-23.4%	-30.9%	38.9%	74.9%	-12.1%	5.8%	-12.0%
The school: means-tested: eligible families¹									
	824	1.5	1,226	4.3	606	0.8	2,656	6.6	0.5
	327	0.9	1,551	2.2	639	0.9	2,526	4.0	0.5
	152.0%	72.7%	-21.0%	94.6%	-5.2%	-3.8%	5.1%	67.7%	5.3%
The school: non-means-tested: scholarships									
	21,765	27.8	33,983	36.6	2,590	2.7	58,518	67.2	10.6
	22,935	29.2	34,117	35.5	2,707	2.8	60,622	68.1	11.0
	-5.1%	-4.7%	-0.4%	3.0%	-4.3%	-4.1%	-3.5%	-1.4%	-3.3%
The school: non-means-tested: eligible families¹									
	12,205	31.1	38,822	52.2	24,005	25.7	75,324	109.2	13.7
	12,067	28.5	38,581	48.2	23,663	23.6	74,985	101.2	13.6
	1.1%	9.1%	0.6%	8.3%	1.4%	8.9%	0.5%	7.9%	0.6%
The school: itrust²									
	0	0.00	16	0.05	28	0.06	44	0.11	0.01
	0	0.00	5	0.01	55	0.40	61	0.42	0.01
			220.0%	316.8%	-49.1%	-85.8%	-27.9%	-74.0%	-27.8%
Early Years Funding									
	0	0.0	6,740	7.8	15,950	17.2	22,690	25.0	4.1
	0	0.0	6,772	7.0	15,348	13.8	22,235	20.9	4.0
			-0.5%	10.7%	3.9%	25.1%	2.0%	19.6%	2.2%
Local Authorities³									
	1,078	12.5	3,843	35.0	244	1.6	5,165	49.1	1.0
	933	10.4	3,523	27.9	217	1.2	4,673	39.5	0.9
	15.5%	20.8%	9.1%	25.6%	12.4%	29.2%	10.5%	24.4%	10.7%
Government Music and Dance Scheme									
	778	6.1	633	5.4	48	0.2	1,459	11.8	0.3
	811	5.8	692	5.6	49	0.2	1,552	11.6	0.3
	-4.1%	6.2%	-8.5%	-3.3%	-2.0%	-3.1%	-6.0%	1.4%	-5.9%
All other sources									
	604	2.0	657	1.5	280	1.4	1,541	4.9	0.3
	671	2.5	760	2.2	389	1.1	1,821	5.8	0.3
	-10.0%	-22.6%	-13.6%	-28.2%	-28.0%	20.5%	-15.4%	-16.3%	-15.3%
Total									
	43,340	156.8	92,531	222.5	44,224	64.2	180,095	445.2	33.4
	44,439	145.3	94,571	204.0	44,125	57.7	182,331	412.0	33.8
	-2.5%	7.9%	-2.2%	9.1%	0.2%	11.3%	-1.2%	8.0%	-1.1%
Number of pupils as a % of all pupils									
	35.9		34.1		30.2		33.4		
	36.1		34.8		30.0		33.8		
	-0.4%		-2.1%		0.8%		-1.1%		

¹ Includes HM Forces discounts, staff discounts, sibling discounts and clergy discounts.

² itrust is an IAPS charity supporting low-income families and families with short-term financial difficulties.

³ Excludes data for schools in Northern Ireland, the Channel Islands and the Isle of Man.

Table 8b. Changes to contributions to fees: single-sex and co-educational schools (termly values)

For ISC schools that participated in the Census in both 2023 and 2024, this table shows the breakdown of contributions to fees by type of contribution.

	Single-sex: boys' (pupils)	Single-sex: boys' (value £m)	Single-sex: girls' (pupils)	Single-sex: girls' (value £m)	Co-ed (pupils)	Co-ed (value £m)	Total (pupils)	Total (value £m)	% of all pupils
The school									
	7,505	26.0	18,366	44.0	130,743	284.4	156,614	354.4	28.5
	7,614	24.1	18,973	42.9	132,516	267.2	159,103	334.2	28.9
	-1.4%	7.7%	-3.2%	2.7%	-1.3%	6.4%	-1.6%	6.0%	-1.4%
The school: means-tested: bursaries									
	2,801	16.3	5,404	26.1	30,039	122.5	38,244	165.0	7.0
	2,755	15.0	5,568	25.1	30,903	114.5	39,226	154.6	7.1
	1.7%	8.9%	-2.9%	4.2%	-2.8%	7.0%	-2.5%	6.7%	-2.4%
The school: means-tested: scholarships									
	165	1.1	54	0.2	1,644	4.9	1,863	6.3	0.3
	161	1.0	183	0.6	1,776	4.3	2,120	5.9	0.4
	2.5%	16.3%	-70.5%	-65.0%	-7.4%	13.5%	-12.1%	5.8%	-12.0%
The school: means-tested: eligible families¹									
	162	0.3	607	0.9	1,887	5.4	2,656	6.6	0.5
	30	0.1	409	0.6	2,087	3.3	2,526	4.0	0.5
	440.0%	126.6%	48.4%	69.8%	-9.6%	65.1%	5.1%	67.7%	5.3%
The school: non-means-tested: scholarships									
	3,071	3.9	9,253	8.7	46,194	54.5	58,518	67.2	10.6
	3,296	3.6	9,826	9.0	47,500	55.5	60,622	68.1	11.0
	-6.8%	9.4%	-5.8%	-3.2%	-2.7%	-1.8%	-3.5%	-1.4%	-3.3%
The school: non-means-tested: eligible families¹									
	1,954	4.3	5,762	8.0	67,608	96.9	75,324	109.2	13.7
	1,909	4.1	5,513	7.6	67,563	89.5	74,985	101.2	13.6
	2.4%	5.4%	4.5%	4.8%	0.1%	8.3%	0.5%	7.9%	0.6%
The school: itrust²									
	0	0.00	12	0.04	32	0.07	44	0.11	0.01
	28	0.36	1	0.00	32	0.06	61	0.42	0.01
	-100.0%	-100.0%	1100.0%	1410.5%	0.0%	18.0%	-27.9%	-74.0%	-27.8%
Early Years Funding									
	561	0.6	1,332	1.4	20,797	23.0	22,690	25.0	4.1
	420	0.4	1,309	1.2	20,506	19.3	22,235	20.9	4.0
	33.6%	59.2%	1.8%	18.0%	1.4%	19.0%	2.0%	19.6%	2.2%
Local Authorities³									
	468	3.2	51	0.3	4,646	45.6	5,165	49.1	1.0
	417	2.7	43	0.2	4,213	36.6	4,673	39.5	0.9
	12.2%	20.1%	18.6%	38.5%	10.3%	24.7%	10.5%	24.4%	10.7%
Government Music and Dance Scheme									
	16	0.0	0	0.0	1,443	11.8	1,459	11.8	0.3
	10	0.0	3	0.0	1,539	11.6	1,552	11.6	0.3
	60.0%	90.4%	-100.0%	-100.0%	-6.2%	1.4%	-6.0%	1.4%	-5.9%
All other sources									
	114	0.9	168	0.5	1,259	3.5	1,541	4.9	0.3
	189	0.8	194	0.5	1,438	4.5	1,821	5.8	0.3
	-39.7%	4.0%	-13.4%	-7.4%	-12.4%	-21.1%	-15.4%	-16.3%	-15.3%
Total									
	8,108	30.6	19,478	46.2	152,509	368.3	180,095	445.2	33.4
	8,066	28.0	20,106	44.8	154,159	339.2	182,331	412.0	33.8
	0.5%	9.4%	-3.1%	3.1%	-1.1%	8.6%	-1.2%	8.0%	-1.1%
Number of pupils as a % of all pupils									
	20.0		26.6		35.9		33.4		
	19.8		27.2		36.3		33.8		
	1.1%		-2.3%		-1.1%		-1.1%		

¹ Includes HM Forces discounts, staff discounts, sibling discounts and clergy discounts.

² itrust is an IAPS charity supporting low-income families and families with short-term financial difficulties.

³ Excludes data for schools in Northern Ireland, the Channel Islands and the Isle of Man.

Table 8c. Changes to contributions to fees: day and boarding schools (termly values)

For ISC schools that participated in the Census in both 2023 and 2024, this table shows the breakdown of contributions to fees by type of contribution.

	Schools with boarders (pupils)	Schools with boarders (value £m)	Day schools (pupils)	Day schools (value £m)	Total (pupils)	Total (value £m)	% of all pupils
The school	77,011	215.4	79,603	139.1	156,614	354.4	28.5
	78,492	202.9	80,611	131.4	159,103	334.2	28.9
	-1.9%	6.2%	-1.3%	5.9%	-1.6%	6.0%	-1.4%
The school: means-tested: bursaries	19,322	95.6	18,922	69.4	38,244	165.0	7.0
	19,962	89.9	19,264	64.7	39,226	154.6	7.1
	-3.2%	6.3%	-1.8%	7.3%	-2.5%	6.7%	-2.4%
The school: means-tested: scholarships	971	4.6	892	1.7	1,863	6.3	0.3
	1,162	4.3	958	1.6	2,120	5.9	0.4
	-16.4%	6.0%	-6.9%	5.1%	-12.1%	5.8%	-12.0%
The school: means-tested: eligible families¹	1,564	5.1	1,092	1.6	2,656	6.6	0.5
	1,096	2.2	1,430	1.7	2,526	4.0	0.5
	42.7%	127.0%	-23.6%	-9.5%	5.1%	67.7%	5.3%
The school: non-means-tested: scholarships	33,049	43.7	25,469	23.5	58,518	67.2	10.6
	34,697	45.0	25,925	23.1	60,622	68.1	11.0
	-4.7%	-2.9%	-1.8%	1.6%	-3.5%	-1.4%	-3.3%
The school: non-means-tested: eligible families¹	34,567	66.3	40,757	42.9	75,324	109.2	13.7
	34,307	61.0	40,678	40.2	74,985	101.2	13.6
	0.8%	8.7%	0.2%	6.8%	0.5%	7.9%	0.6%
The school: itrust²	19	0.04	25	0.07	44	0.11	0.01
	44	0.38	17	0.04	61	0.42	0.01
	-56.8%	-89.2%	47.1%	84.1%	-27.9%	-74.0%	-27.8%
Early Years Funding	4,091	4.2	18,599	20.8	22,690	25.0	4.1
	4,082	3.5	18,153	17.4	22,235	20.9	4.0
	0.2%	19.6%	2.5%	19.7%	2.0%	19.6%	2.2%
Local Authorities³	1,334	9.8	3,831	39.3	5,165	49.1	1.0
	1,224	8.8	3,449	30.7	4,673	39.5	0.9
	9.0%	12.3%	11.1%	27.9%	10.5%	24.4%	10.7%
Government Music and Dance Scheme	1,458	11.8	1	0.0	1,459	11.8	0.3
	1,552	11.6	0	0.0	1,552	11.6	0.3
	-6.1%	1.4%			-6.0%	1.4%	-5.9%
All other sources	885	3.1	656	1.8	1,541	4.9	0.3
	884	3.6	937	2.2	1,821	5.8	0.3
	0.1%	-13.2%	-30.0%	-21.2%	-15.4%	-16.3%	-15.3%
Total	82,280	244.3	97,815	200.9	180,095	445.2	33.4
	83,727	230.3	98,604	181.7	182,331	412.0	33.8
	-1.7%	6.0%	-0.8%	10.6%	-1.2%	8.0%	-1.1%
Number of pupils as a % of all pupils	39.3		29.7		33.4		
	39.8		30.0		33.8		
	-1.4%		-0.8%		-1.1%		

¹ Includes HM Forces discounts, staff discounts, sibling discounts and clergy discounts.

² itrust is an IAPS charity supporting low-income families and families with short-term financial difficulties.

³ Excludes data for schools in Northern Ireland, the Channel Islands and the Isle of Man.

Table 9. Changes to non-British pupils whose parents live overseas
For ISC schools that participated in the census in both 2023 and 2024, this table shows the number of non-British pupils whose parents live overseas broken down by country/area of residence.

	Senior	Mixed-age	Junior	Single-sex: boys'	Single-sex: girls'	Co-ed	Schools with boarders	Day schools	Total
France	187	137	50	19	17	338	366	8	374
	194	159	42	20	19	356	387	8	395
	-3.6%	-13.8%	19.0%	-5.0%	-10.5%	-5.1%	-5.4%	0.0%	-5.3%
Germany	925	1,018	11	30	51	1,873	1,944	10	1,954
	974	1,101	11	37	59	1,990	2,077	9	2,086
	-5.0%	-7.5%	0.0%	-18.9%	-13.6%	-5.9%	-6.4%	11.1%	-6.3%
Russia	636	244	36	17	22	877	887	29	916
	729	281	36	25	30	991	1,020	26	1,046
	-12.8%	-13.2%	0.0%	-32.0%	-26.7%	-11.5%	-13.0%	11.5%	-12.4%
Spain	506	537	305	80	122	1,146	1,295	53	1,348
	552	607	300	92	141	1,226	1,417	42	1,459
	-8.3%	-11.5%	1.7%	-13.0%	-13.5%	-6.5%	-8.6%	26.2%	-7.6%
Ireland	26	46	4	19	2	55	75	1	76
	30	33	1	7	3	54	58	6	64
	-13.3%	39.4%	300.0%	171.4%	-33.3%	1.9%	29.3%	-83.3%	18.8%
Italy	281	125	10	1	11	404	406	10	416
	279	123	6	2	12	394	403	5	408
	0.7%	1.6%	66.7%	-50.0%	-8.3%	2.5%	0.7%	100.0%	2.0%
Poland	59	83	6	1	12	135	145	3	148
	57	47	4	2	8	98	107	1	108
	3.5%	76.6%	50.0%	-50.0%	50.0%	37.8%	35.5%	200.0%	37.0%
Romania	74	25	3	1	4	97	100	2	102
	82	25	3	1	6	103	109	1	110
	-9.8%	0.0%	0.0%	0.0%	-33.3%	-5.8%	-8.3%	100.0%	-7.3%
Ukraine	434	288	30	16	20	716	676	76	752
	436	301	39	11	27	738	718	58	776
	-0.5%	-4.3%	-23.1%	45.5%	-25.9%	-3.0%	-5.8%	31.0%	-3.1%
Remainder of Europe (EEA)	757	521	46	42	66	1,216	1,295	29	1,324
	768	526	30	46	88	1,190	1,297	27	1,324
	-1.4%	-1.0%	53.3%	-8.7%	-25.0%	2.2%	-0.2%	7.4%	0.0%
Remainder of Europe (non-EEA)	480	191	10	22	13	646	659	22	681
	466	199	11	18	17	641	659	17	676
	3.0%	-4.0%	-9.1%	22.2%	-23.5%	0.8%	0.0%	29.4%	0.7%
Nigeria	499	196	44	26	71	642	698	41	739
	547	245	34	21	86	719	768	58	826
	-8.8%	-20.0%	29.4%	23.8%	-17.4%	-10.7%	-9.1%	-29.3%	-10.5%
Rest of Africa	383	237	26	14	42	590	620	26	646
	367	274	14	14	46	595	623	32	655
	4.4%	-13.5%	85.7%	0.0%	-8.7%	-0.8%	-0.5%	-18.8%	-1.4%
USA	201	151	30	15	55	312	368	14	382
	190	134	30	22	45	287	347	7	354
	5.8%	12.7%	0.0%	-31.8%	22.2%	8.7%	6.1%	100.0%	7.9%
Rest of North America	90	47	5	8	16	118	137	5	142
	100	47	4	4	8	139	148	3	151
	-10.0%	0.0%	25.0%	100.0%	100.0%	-15.1%	-7.4%	66.7%	-6.0%
Central and South America	342	232	11	9	44	532	574	11	585
	264	223	7	12	45	437	488	6	494
	29.5%	4.0%	57.1%	-25.0%	-2.2%	21.7%	17.6%	83.3%	18.4%
Middle East	484	199	12	15	25	655	658	37	695
	424	165	13	18	30	554	571	31	602
	14.2%	20.6%	-7.7%	-16.7%	-16.7%	18.2%	15.2%	19.4%	15.4%
Hong Kong	3,052	1,850	115	369	855	3,793	4,939	78	5,017
	3,310	2,207	132	410	963	4,276	5,543	106	5,649
	-7.8%	-16.2%	-12.9%	-10.0%	-11.2%	-11.3%	-10.9%	-26.4%	-11.2%
Mainland China	3,469	1,914	337	289	774	4,657	5,492	228	5,720
	2,911	1,576	208	260	624	3,811	4,510	185	4,695
	19.2%	21.4%	62.0%	11.2%	24.0%	22.2%	21.8%	23.2%	21.8%
Taiwan	83	43	2	5	14	109	124	4	128
	67	43	5	3	9	103	110	5	115
	23.9%	0.0%	-60.0%	66.7%	55.6%	5.8%	12.7%	-20.0%	11.3%
Japan	297	129	66	40	25	427	484	8	492
	284	133	56	39	25	409	467	6	473
	4.6%	-3.0%	17.9%	2.6%	0.0%	4.4%	3.6%	33.3%	4.0%
South Korea	283	97	18	24	48	326	380	18	398
	272	82	24	25	43	310	355	23	378
	4.0%	18.3%	-25.0%	-4.0%	11.6%	5.2%	7.0%	-21.7%	5.3%
Malaysia	210	33	3	14	32	200	239	7	246
	237	39	1	16	20	241	270	7	277
	-11.4%	-15.4%	200.0%	-12.5%	60.0%	-17.0%	-11.5%	0.0%	-11.2%
Thailand	452	160	53	48	65	552	657	8	665
	469	198	39	43	85	578	698	8	706
	-3.6%	-19.2%	35.9%	11.6%	-23.5%	-4.5%	-5.9%	0.0%	-5.8%
India	160	64	8	19	16	197	220	12	232
	147	71	12	13	14	203	218	12	230
	8.8%	-9.9%	-33.3%	46.2%	14.3%	-3.0%	0.9%	0.0%	0.9%
Pakistan, Sri Lanka and Bangladesh	24	21	5	1	5	44	44	6	50
	43	27	5	1	9	65	69	6	75
	-44.2%	-22.2%	0.0%	0.0%	-44.4%	-32.3%	-36.2%	0.0%	-33.3%
Central Asia	273	60	4	5	6	326	322	15	337
	236	63	4	1	9	293	290	13	303
	15.7%	-4.8%	0.0%	400.0%	-33.3%	11.3%	11.0%	15.4%	11.2%
Remainder of Far East	623	155	33	47	70	694	776	35	811
	593	193	22	39	74	695	732	76	808
	5.1%	-19.7%	50.0%	20.5%	-5.4%	-0.1%	6.0%	-53.9%	0.4%
Oceania	63	24	6	5	16	72	91	2	93
	65	23	6	9	12	73	91	3	94
	-3.1%	4.3%	0.0%	-44.4%	33.3%	-1.4%	0.0%	-33.3%	-1.1%
Total	15,353	8,827	1,289	1,201	2,519	21,749	24,671	798	25,469
	15,093	9,145	1,099	1,211	2,557	21,569	24,550	787	25,337
	1.7%	-3.5%	17.3%	-0.8%	-1.5%	0.8%	0.5%	1.4%	0.5%

Table 10. Changes to non-British pupils whose parents live in the UK
For ISC schools that participated in the Census in both 2023 and 2024, this table shows the number of non-British pupils whose parents live in the UK broken down by country/area of nationality.

	Senior	Mixed-age	Junior	Single-sex: boys'	Single-sex: girls'	Co-ed	Schools with boarders	Day schools	Total
France	389	1,582	551	169	277	2,076	589	1,933	2,522
	404	1,822	682	203	316	2,389	594	2,314	2,908
	-3.7%	-13.2%	-19.2%	-16.7%	-12.3%	-13.1%	-0.8%	-16.5%	-13.3%
Germany	263	585	312	128	214	818	447	713	1,160
	281	591	327	146	230	823	475	724	1,199
	-6.4%	-1.0%	-4.6%	-12.3%	-7.0%	-0.6%	-5.9%	-1.5%	-3.3%
Russia	208	329	309	82	136	628	341	505	846
	252	331	336	109	137	673	407	512	919
	-17.5%	-0.6%	-8.0%	-24.8%	-0.7%	-6.7%	-16.2%	-1.4%	-7.9%
Spain	227	809	346	106	176	1,100	330	1,052	1,382
	219	803	267	110	197	982	341	948	1,289
	3.7%	0.7%	29.6%	-3.6%	-10.7%	12.0%	-3.2%	11.0%	7.2%
Ireland	418	635	251	127	261	916	564	740	1,304
	408	654	265	130	301	896	539	788	1,327
	2.5%	-2.9%	-5.3%	-2.3%	-13.3%	2.2%	4.6%	-6.1%	-1.7%
Italy	363	645	343	144	266	941	396	955	1,351
	367	647	371	181	265	939	418	967	1,385
	-1.1%	-0.3%	-7.5%	-20.4%	0.4%	0.2%	-5.3%	-1.2%	-2.5%
Poland	107	253	91	23	66	362	153	298	451
	106	226	80	25	67	320	158	254	412
	0.9%	11.9%	13.8%	-8.0%	-1.5%	13.1%	-3.2%	17.3%	9.5%
Romania	71	142	71	13	26	245	113	171	284
	78	135	86	14	28	257	109	190	299
	-9.0%	5.2%	-17.4%	-7.1%	-7.1%	-4.7%	3.7%	-10.0%	-5.0%
Ukraine	348	613	321	67	180	1,035	644	638	1,282
	328	605	345	63	186	1,029	662	616	1,278
	6.1%	1.3%	-7.0%	6.3%	-3.2%	0.6%	-2.7%	3.6%	0.3%
Remainder of Europe (EEA)	1,016	1,831	1,055	366	640	2,896	1,397	2,505	3,902
	1,054	1,958	1,064	420	691	2,965	1,499	2,577	4,076
	-3.6%	-6.5%	-0.8%	-12.9%	-7.4%	-2.3%	-6.8%	-2.8%	-4.3%
Remainder of Europe (non-EEA)	202	357	255	62	117	635	298	516	814
	235	381	228	70	136	638	295	549	844
	-14.0%	-6.3%	11.8%	-11.4%	-14.0%	-0.5%	1.0%	-6.0%	-3.6%
Nigeria	187	456	138	45	84	652	364	417	781
	164	384	131	48	104	527	339	340	679
	14.0%	18.8%	5.3%	-6.3%	-19.2%	23.7%	7.4%	22.6%	15.0%
Rest of Africa	203	725	313	70	199	972	519	722	1,241
	232	668	309	61	188	960	519	690	1,209
	-12.5%	8.5%	1.3%	14.8%	5.9%	1.3%	0.0%	4.6%	2.6%
USA	603	2,369	1,352	287	475	3,562	1,632	2,692	4,324
	612	2,556	1,242	299	485	3,626	1,695	2,715	4,410
	-1.5%	-7.3%	8.9%	-4.0%	-2.1%	-1.8%	-3.7%	-0.8%	-2.0%
Rest of North America	103	306	159	30	87	451	209	359	568
	104	312	160	40	85	451	221	355	576
	-1.0%	-1.9%	-0.6%	-25.0%	2.4%	0.0%	-5.4%	1.1%	-1.4%
Central and South America	105	360	156	26	63	532	228	393	621
	102	289	170	24	63	474	215	346	561
	2.9%	24.6%	-8.2%	8.3%	0.0%	12.2%	6.0%	13.6%	10.7%
Middle East	151	371	242	48	96	620	151	613	764
	154	420	260	51	97	686	185	649	834
	-1.9%	-11.7%	-6.9%	-5.9%	-1.0%	-9.6%	-18.4%	-5.5%	-8.4%
Hong Kong	807	1,474	306	286	523	1,778	1,516	1,071	2,587
	757	1,306	282	226	480	1,639	1,428	917	2,345
	6.6%	12.9%	8.5%	26.5%	9.0%	8.5%	6.2%	16.8%	10.3%
Mainland China	1,065	2,132	1,282	569	980	2,930	2,142	2,337	4,479
	919	1,920	1,181	571	873	2,576	1,922	2,098	4,020
	15.9%	11.0%	8.6%	-0.4%	12.3%	13.7%	11.4%	11.4%	11.4%
Taiwan	4	37	29	5	5	60	31	39	70
	8	18	15	5	7	29	15	26	41
	-50.0%	105.6%	93.3%	0.0%	-28.6%	106.9%	106.7%	50.0%	70.7%
Japan	128	253	228	43	108	458	191	418	609
	108	266	253	41	109	477	169	458	627
	18.5%	-4.9%	-9.9%	4.9%	-0.9%	-4.0%	13.0%	-8.7%	-2.9%
South Korea	114	227	183	69	131	324	185	339	524
	131	209	138	45	134	299	170	308	478
	-13.0%	8.6%	32.6%	53.3%	-2.2%	8.4%	8.8%	10.1%	9.6%
Malaysia	45	82	44	22	45	104	55	116	171
	38	86	47	23	41	107	61	110	171
	18.4%	-4.7%	-6.4%	-4.3%	9.8%	-2.8%	-9.8%	5.5%	0.0%
Thailand	19	32	12	5	6	52	47	16	63
	25	34	16	3	10	62	50	25	75
	-24.0%	-5.9%	-25.0%	66.7%	-40.0%	-16.1%	-6.0%	-36.0%	-16.0%
India	222	1,090	461	167	400	1,206	356	1,417	1,773
	189	1,056	439	187	412	1,085	336	1,348	1,684
	17.5%	3.2%	5.0%	-10.7%	-2.9%	11.2%	6.0%	5.1%	5.3%
Pakistan, Sri Lanka and Bangladesh	87	300	97	49	103	332	107	377	484
	89	278	65	50	117	265	80	352	432
	-2.2%	7.9%	49.2%	-2.0%	-12.0%	25.3%	33.8%	7.1%	12.0%
Central Asia	67	71	55	21	19	153	80	113	193
	62	87	50	6	27	166	93	106	199
	8.1%	-18.4%	10.0%	250.0%	-29.6%	-7.8%	-14.0%	6.6%	-3.0%
Remainder of Far East	88	179	151	21	75	322	135	283	418
	78	137	91	28	57	221	127	179	306
	12.8%	30.7%	65.9%	-25.0%	31.6%	45.7%	6.3%	58.1%	36.6%
Oceania	229	419	286	67	157	710	388	546	934
	215	414	309	72	154	712	397	541	938
	6.5%	1.2%	-7.4%	-6.9%	1.9%	-0.3%	-2.3%	0.9%	-0.4%
Total	7,839	18,664	9,399	3,117	5,915	26,870	13,608	22,294	35,902
	7,719	18,593	9,209	3,251	5,997	26,273	13,519	22,002	35,521
	1.6%	0.4%	2.1%	-4.1%	-1.4%	2.3%	0.7%	1.3%	1.1%

Table 11. Changes to British pupils whose parents live overseas

For ISC schools that participated in the Census in both 2023 and 2024, this table shows the number of British pupils whose parents live overseas and the number of British pupils whose parents serve in HM Forces and those who are new to their school this year.

British pupils whose parents:	Senior	Mixed-age	Junior	Single-sex: boys'	Single-sex: girls'	Co-ed	Schools with boarders	Day schools	Total
Live abroad	2,047	876	143	290	377	2,399	2,940	3,066	3,066
	2,259	1,007	170	305	470	2,661	3,292	3,436	3,436
	-9.4%	-13.0%	-15.9%	-4.9%	-19.8%	-9.8%	-10.7%	-10.8%	-10.8%
Serve in HM Forces	1,389	1,785	1,283	88	236	4,133	3,907	4,457	4,457
	1,414	1,865	1,269	127	228	4,193	3,989	4,548	4,548
	-1.8%	-4.3%	1.1%	-30.7%	3.5%	-1.4%	-2.1%	-2.0%	-2.0%
New British pupils whose parents:									
Live abroad	587	306	43	63	87	786	897	936	936
	661	318	75	53	119	882	1,015	1,054	1,054
	-11.2%	-3.8%	-42.7%	18.9%	-26.9%	-10.9%	-11.6%	-11.2%	-11.2%
Serve in HM Forces	237	234	267	13	36	689	646	738	738
	235	245	273	21	29	703	654	753	753
	0.9%	-4.5%	-2.2%	-38.1%	24.1%	-2.0%	-1.2%	-2.0%	-2.0%

Table 12. Changes to teacher numbers¹

This table shows the number of teachers in ISC schools that participated in the Census in 2023 and 2024.

Full-time	Senior	Mixed-age	Junior	Single-sex: boys'	Single-sex: girls'	Co-ed	Schools with boarders	Day schools	Total
Men	6,909	9,526	3,355	2,461	1,705	15,624	10,272	9,518	19,790
	6,805	9,583	3,417	2,531	1,647	15,627	10,334	9,471	19,805
	1.5%	-0.6%	-1.8%	-2.8%	3.5%	0.0%	-0.6%	0.5%	-0.1%
Women	6,431	14,372	7,857	1,652	4,688	22,320	11,559	17,101	28,660
	6,347	14,124	8,006	1,664	4,654	22,159	11,413	17,064	28,477
	1.3%	1.8%	-1.9%	-0.7%	0.7%	0.7%	1.3%	0.2%	0.6%
Total	13,340	23,898	11,212	4,113	6,393	37,944	21,831	26,619	48,450
	13,152	23,707	11,423	4,195	6,301	37,786	21,747	26,535	48,282
	1.4%	0.8%	-1.8%	-2.0%	1.5%	0.4%	0.4%	0.3%	0.3%
Part-time									
Men	1,189	1,669	574	372	426	2,634	1,567	1,865	3,432
	1,177	1,573	541	377	422	2,492	1,505	1,786	3,291
	1.0%	6.1%	6.1%	-1.3%	0.9%	5.7%	4.1%	4.4%	4.3%
Women	3,408	7,544	3,724	698	3,014	10,964	5,515	9,161	14,676
	3,225	7,347	3,670	649	3,002	10,591	5,311	8,931	14,242
	5.7%	2.7%	1.5%	7.6%	0.4%	3.5%	3.8%	2.6%	3.0%
Total	4,597	9,213	4,298	1,070	3,440	13,598	7,082	11,026	18,108
	4,402	8,920	4,211	1,026	3,424	13,083	6,816	10,717	17,533
	4.4%	3.3%	2.1%	4.3%	0.5%	3.9%	3.9%	2.9%	3.3%
Part-time (hours)									
Men	20,600	30,968	10,472	6,355	7,604	48,082	27,984	34,056	62,040
	20,328	28,662	9,759	6,056	7,750	44,942	26,715	32,033	58,749
	1.3%	8.0%	7.3%	4.9%	-1.9%	7.0%	4.7%	6.3%	5.6%
Women	64,254	152,077	75,353	14,328	57,687	219,668	107,175	184,509	291,684
	60,310	148,851	73,063	12,783	56,990	212,450	103,645	178,578	282,223
	6.5%	2.2%	3.1%	12.1%	1.2%	3.4%	3.4%	3.3%	3.4%
Total	84,854	183,045	85,825	20,683	65,291	267,750	135,158	218,565	353,724
	80,638	177,512	82,822	18,839	64,741	257,392	130,360	210,612	340,972
	5.2%	3.1%	3.6%	9.8%	0.9%	4.0%	3.7%	3.8%	3.7%
Overall full-time equivalent (32.5 hours = 1 full-time)									
Men	7,543	10,479	3,677	2,657	1,939	17,103	11,133	10,566	21,699
	7,430	10,465	3,717	2,717	1,885	17,010	11,156	10,457	21,613
	1.5%	0.1%	-1.1%	-2.2%	2.8%	0.6%	-0.2%	1.0%	0.4%
Women	8,408	19,051	10,176	2,093	6,463	29,079	14,857	22,778	37,635
	8,203	18,704	10,254	2,057	6,408	28,696	14,602	22,559	37,161
	2.5%	1.9%	-0.8%	1.7%	0.9%	1.3%	1.7%	1.0%	1.3%
Total	15,951	29,530	13,853	4,749	8,402	46,182	25,990	33,344	59,334
	15,633	29,169	13,971	4,775	8,293	45,706	25,758	33,015	58,773
	2.0%	1.2%	-0.8%	-0.5%	1.3%	1.0%	0.9%	1.0%	1.0%

¹ Excludes nursery staff.

Table 13. Changes to teaching assistant numbers¹

This table shows the number of teaching assistants in ISC schools that participated in the Census in 2023 and 2024.

Full-time	Senior	Mixed-age	Junior	Single-sex: boys'	Single-sex: girls'	Co-ed	Schools with boarders	Day schools	Total
Men	137	429	404	117	52	801	319	651	970
	133	427	372	106	39	787	310	622	932
	3.0%	0.5%	8.6%	10.4%	33.3%	1.8%	2.9%	4.7%	4.1%
Women	412	2,677	3,340	389	572	5,468	1,575	4,854	6,429
	374	2,591	3,443	400	566	5,442	1,489	4,919	6,408
	10.2%	3.3%	-3.0%	-2.8%	1.1%	0.5%	5.8%	-1.3%	0.3%
Total	549	3,106	3,744	506	624	6,269	1,894	5,505	7,399
	507	3,018	3,815	506	605	6,229	1,799	5,541	7,340
	8.3%	2.9%	-1.9%	0.0%	3.1%	0.6%	5.3%	-0.6%	0.8%
Part-time									
Men	49	191	112	28	24	300	132	220	352
	62	170	114	28	23	295	115	231	346
	-21.0%	12.4%	-1.8%	0.0%	4.3%	1.7%	14.8%	-4.8%	1.7%
Women	450	2,460	2,441	265	616	4,470	1,586	3,765	5,351
	383	2,336	2,473	227	579	4,386	1,544	3,648	5,192
	17.5%	5.3%	-1.3%	16.7%	6.4%	1.9%	2.7%	3.2%	3.1%
Total	499	2,651	2,553	293	640	4,770	1,718	3,985	5,703
	445	2,506	2,587	255	602	4,681	1,659	3,879	5,538
	12.1%	5.8%	-1.3%	14.9%	6.3%	1.9%	3.6%	2.7%	3.0%
Part-time hours									
Men	731	3,721	2,143	470	430	5,695	2,411	4,183	6,594
	905	3,216	2,197	597	351	5,370	2,118	4,200	6,318
	-19.2%	15.7%	-2.5%	-21.3%	22.3%	6.1%	13.9%	-0.4%	4.4%
Women	7,913	51,666	51,388	5,739	11,937	93,292	32,024	78,943	110,967
	6,122	49,386	51,697	4,857	10,976	91,372	31,162	76,044	107,206
	29.2%	4.6%	-0.6%	18.1%	8.7%	2.1%	2.8%	3.8%	3.5%
Total	8,643	55,387	53,531	6,209	12,366	98,986	34,435	83,126	117,561
	7,027	52,602	53,894	5,454	11,328	96,742	33,280	80,244	113,523
	23.0%	5.3%	-0.7%	13.8%	9.2%	2.3%	3.5%	3.6%	3.6%
Overall full-time equivalent (32.5 hours = 1 full-time)									
Men	159	543	470	131	65	976	393	780	1,173
	161	526	440	124	50	952	375	751	1,126
	-0.8%	3.3%	6.9%	5.7%	30.9%	2.5%	4.8%	3.8%	4.1%
Women	655	4,267	4,921	566	939	8,339	2,560	7,283	9,843
	562	4,111	5,034	549	904	8,253	2,448	7,259	9,707
	16.6%	3.8%	-2.2%	2.9%	3.9%	1.0%	4.6%	0.3%	1.4%
Total	815	4,810	5,391	697	1,004	9,315	2,954	8,063	11,016
	723	4,637	5,473	674	954	9,206	2,823	8,010	10,833
	12.7%	3.7%	-1.5%	3.4%	5.3%	1.2%	4.6%	0.7%	1.7%

¹ Excludes nursery staff.

Table 14. Changes to pupil-teacher ratios

This table shows the pupil and teacher gender ratios along with pupil-teacher ratio in ISC schools that participated in the Census in 2023 and 2024.

Full-time	Senior	Mixed-age	Junior	Single-sex: boys'	Single-sex: girls'	Co-ed	Schools with boarders	Day schools	Total
Boys	65,385	131,744	81,375	43,661	214	234,629	113,608	164,896	278,504
	65,255	131,568	82,297	43,885	218	235,017	113,888	165,232	279,120
	0.2%	0.1%	-1.1%	-0.5%	-1.8%	-0.2%	-0.2%	-0.2%	-0.2%
Girls	58,714	147,176	65,640	157	74,323	197,050	99,328	172,202	271,530
	58,482	147,612	65,618	154	74,953	196,605	99,792	171,920	271,712
	0.4%	-0.3%	0.0%	1.9%	-0.8%	0.2%	-0.5%	0.2%	-0.1%
Total	124,099	278,920	147,015	43,818	74,537	431,679	212,936	337,098	550,034
	123,737	279,180	147,915	44,039	75,171	431,622	213,680	337,152	550,832
	0.3%	-0.1%	-0.6%	-0.5%	-0.8%	0.0%	-0.3%	0.0%	-0.1%
Ratios									
Pupil-teacher¹	7.8:1	9.1:1	9.2:1	9.1:1	8.7:1	8.8:1	7.9:1	9.4:1	8.8:1
	7.9:1	9.2:1	9.3:1	9.1:1	8.9:1	8.9:1	8.0:1	9.6:1	8.9:1
	-1.7%	-1.3%	-0.4%	0.0%	-2.3%	-1.2%	-1.3%	-1.2%	-1.2%
Boys:girls (pupils)	1.1:1	0.9:1	1.2:1	278.1:1	0.0:1	1.2:1	1.1:1	1.0:1	1.0:1
	1.1:1	0.9:1	1.3:1	285.0:1	0.0:1	1.2:1	1.1:1	1.0:1	1.0:1
	-0.2%	0.4%	-1.2%	-2.4%	-1.0%	-0.4%	0.2%	-0.4%	-0.2%
Men:women (teachers)²	0.9:1	0.6:1	0.4:1	1.3:1	0.3:1	0.6:1	0.7:1	0.5:1	0.6:1
	0.9:1	0.6:1	0.4:1	1.3:1	0.3:1	0.6:1	0.8:1	0.5:1	0.6:1
	-1.0%	-1.7%	-0.3%	-3.9%	2.0%	-0.8%	-1.9%	0.1%	-0.9%
Men:women (teaching assistants)²	0.2:1	0.1:1	0.1:1	0.2:1	0.1:1	0.1:1	0.2:1	0.1:1	0.1:1
	0.3:1	0.1:1	0.1:1	0.2:1	0.1:1	0.1:1	0.2:1	0.1:1	0.1:1
	-14.9%	-0.4%	9.3%	2.7%	26.0%	1.5%	0.2%	3.4%	2.7%

¹ Pupil-teacher ratio excludes nursery teachers and nursery pupils.

² Excludes nursery staff.

Table 15. Changes to full-time teachers

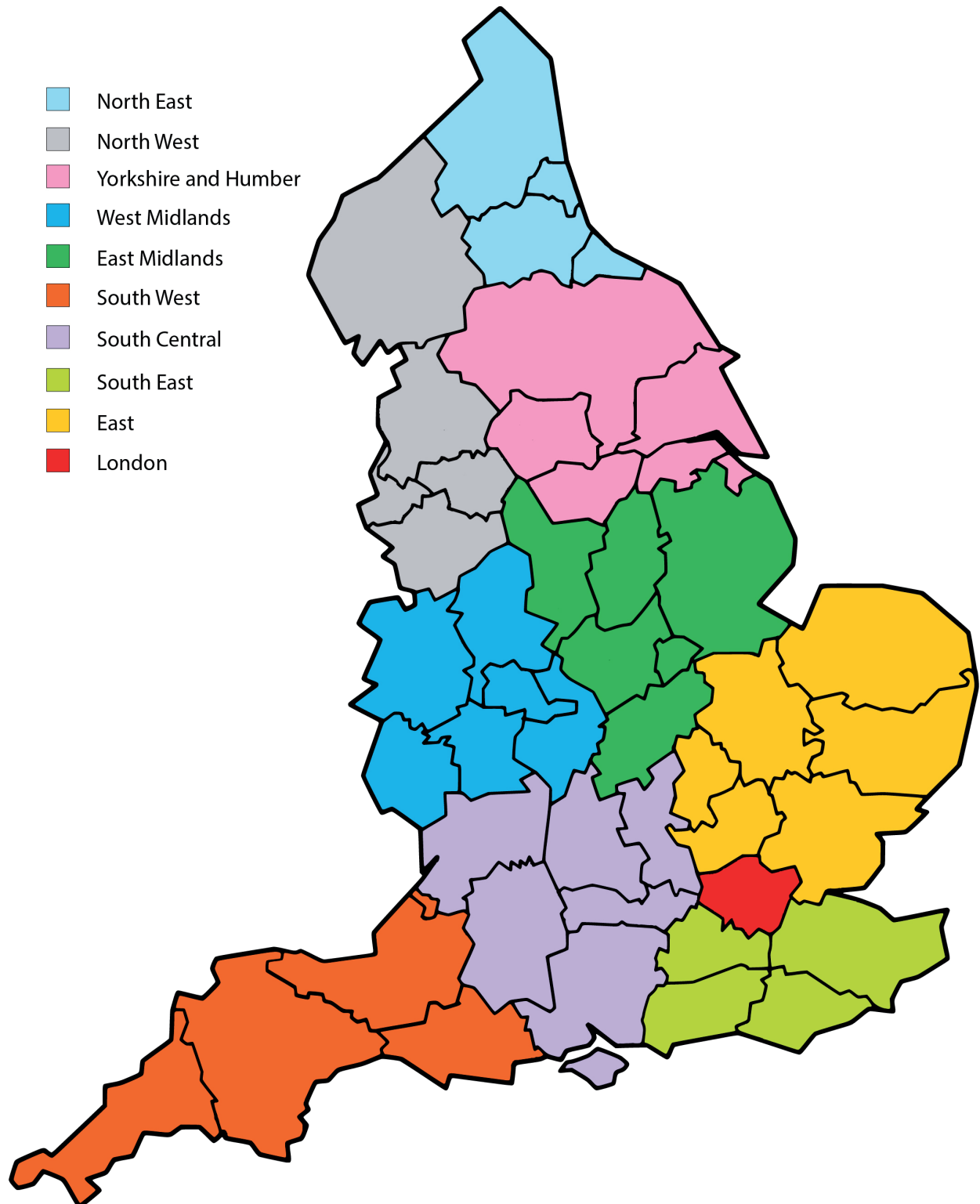
This table shows the number of full-time teaching staff coming into ISC schools (broken down by previous occupation) and leaving schools (broken down by destination). This table comprises those schools that participated in the Census in both 2023 and 2024.

Arriving from	Senior	Mixed-age	Junior	Single-sex: boys'	Single-sex: girls'	Co-ed	Schools with boarders	Day schools	Total
Independent schools	710	1,115	643	183	398	1,887	1,105	1,363	2,468
	713	1,050	696	223	378	1,858	1,191	1,268	2,459
	-0.4%	6.2%	-7.6%	-17.9%	5.3%	1.6%	-7.2%	7.5%	0.4%
State-funded schools	585	1,441	548	169	339	2,066	968	1,606	2,574
	535	1,561	638	159	386	2,189	1,029	1,705	2,734
	9.3%	-7.7%	-14.1%	6.3%	-12.2%	-5.6%	-5.9%	-5.8%	-5.9%
ITT at university or training college	83	158	57	20	41	237	129	169	298
	123	226	73	18	61	343	163	259	422
	-32.5%	-30.1%	-21.9%	11.1%	-32.8%	-30.9%	-20.9%	-34.7%	-29.4%
New graduates	122	126	56	19	56	229	126	178	304
	106	152	78	28	35	273	155	181	336
	15.1%	-17.1%	-28.2%	-32.1%	60.0%	-16.1%	-18.7%	-1.7%	-9.5%
Industry	85	118	25	12	42	174	118	110	228
	47	127	31	19	20	166	104	101	205
	80.9%	-7.1%	-19.4%	-36.8%	110.0%	4.8%	13.5%	8.9%	11.2%
Outside the UK	111	222	80	33	40	340	175	238	413
	162	318	155	53	68	514	310	325	635
	-31.5%	-30.2%	-48.4%	-37.7%	-41.2%	-33.9%	-43.5%	-26.8%	-35.0%
Other	623	1,020	419	113	313	1,636	948	1,114	2,062
	499	1,008	475	94	363	1,525	798	1,184	1,982
	24.8%	1.2%	-11.8%	20.2%	-13.8%	7.3%	18.8%	-5.9%	4.0%
Total	2,319	4,200	1,828	549	1,229	6,569	3,569	4,778	8,347
	2,185	4,442	2,146	594	1,311	6,868	3,750	5,023	8,773
	6.1%	-5.4%	-14.8%	-7.6%	-6.3%	-4.4%	-4.8%	-4.9%	-4.9%
Going to									
Independent schools	549	816	458	140	243	1,440	795	1,028	1,823
	513	726	558	203	241	1,353	807	990	1,797
	7.0%	12.4%	-17.9%	-31.0%	0.8%	6.4%	-1.5%	3.8%	1.4%
State-funded schools	223	555	220	45	81	872	389	609	998
	198	506	221	48	110	767	391	534	925
	12.6%	9.7%	-0.5%	-6.3%	-26.4%	13.7%	-0.5%	14.0%	7.9%
Industry	135	236	126	39	70	388	219	278	497
	101	212	103	31	49	336	164	252	416
	33.7%	11.3%	22.3%	25.8%	42.9%	15.5%	33.5%	10.3%	19.5%
Outside the UK	87	186	86	23	36	300	144	215	359
	124	208	79	29	57	325	203	208	411
	-29.8%	-10.6%	8.9%	-20.7%	-36.8%	-7.7%	-29.1%	3.4%	-12.7%
Other (incl. retirement)	1,146	2,162	1,107	372	691	3,352	1,945	2,470	4,415
	1,019	2,264	1,113	253	735	3,408	1,766	2,630	4,396
	12.5%	-4.5%	-0.5%	47.0%	-6.0%	-1.6%	10.1%	-6.1%	0.4%
Total	13,340	23,898	11,212	4,113	6,393	37,944	21,831	26,619	48,450
	13,152	23,707	11,423	4,195	6,301	37,786	21,747	26,535	48,282
	1.4%	0.8%	-1.8%	-2.0%	1.5%	0.4%	0.4%	0.3%	0.3%
Net gain									
Independent schools	161	299	185	43	155	447	310	335	645
	200	324	138	20	137	505	384	278	662
	-19.5%	-7.7%	34.1%	115.0%	13.1%	-11.5%	-19.3%	20.5%	-2.6%
State-funded schools	362	886	328	124	258	1,194	579	997	1,576
	337	1,055	417	111	276	1,422	638	1,171	1,809
	7.4%	-16.0%	-21.3%	11.7%	-6.5%	-16.0%	-9.2%	-14.9%	-12.9%
Industry	-50	-118	-101	-27	-28	-214	-101	-168	-269
	-54	-85	-72	-12	-29	-170	-60	-151	-211
	7.4%	-38.8%	-40.3%	-125.0%	3.4%	-25.9%	-68.3%	-11.3%	-27.5%
Outside the UK	24	36	-6	10	4	40	31	23	54
	38	110	76	24	11	189	107	117	224
	-36.8%	-67.3%	-107.9%	-58.3%	-63.6%	-78.8%	-71.0%	-80.3%	-75.9%
Other	-523	-1,142	-688	-259	-378	-1,716	-997	-1,356	-2,353
	-520	-1,256	-638	-159	-372	-1,883	-968	-1,446	-2,414
	-0.6%	9.1%	-7.8%	-62.9%	-1.6%	8.9%	-3.0%	6.2%	2.5%
Total	179	245	-169	-70	108	217	77	178	255
	230	526	72	30	119	679	419	409	828
	-22.2%	-53.4%	-334.7%	-333.3%	-9.2%	-68.0%	-81.6%	-56.5%	-69.2%
Full-time teachers									
Turnover as % of full-time teachers	16.0	16.5	17.8	15.0	17.5	16.7	16.0	17.3	16.7
	14.9	16.5	18.2	13.4	18.9	16.4	15.3	17.4	16.5
	7.9%	0.2%	-1.9%	11.9%	-7.3%	2.2%	4.4%	-0.6%	1.5%
Gain as % of full-time teachers	1.3	1.0	-1.5	-1.7	1.7	0.6	0.4	0.7	0.5
	1.7	2.2	0.6	0.7	1.9	1.8	1.9	1.5	1.7
	-23.3%	-53.8%	-339.1%	-338.0%	-10.5%	-68.2%	-81.7%	-56.6%	-69.3%

Appendix Three

ISC Regions

Fig 1. ISC English Regions



Constituent Associations:

Association of Governing Bodies of
Independent Schools

Girls' Schools Association

HMC (The Heads' Conference)

Independent Association of Prep Schools

Independent Schools Association

The Independent Schools' Bursars Association

The Society of Heads



† 020 7766 7070

First Floor
27 Queen Anne's Gate
London
SW1H 9BU

www.isc.co.uk

A Company Limited by Guarantee.
Registered in England and Wales
No. 1103760