

*User groups*

**Healthcare service providers**

Primary care organizations  
Hospital districts  
Private healthcare providers

**Providers of social services**

**Pharmacies**

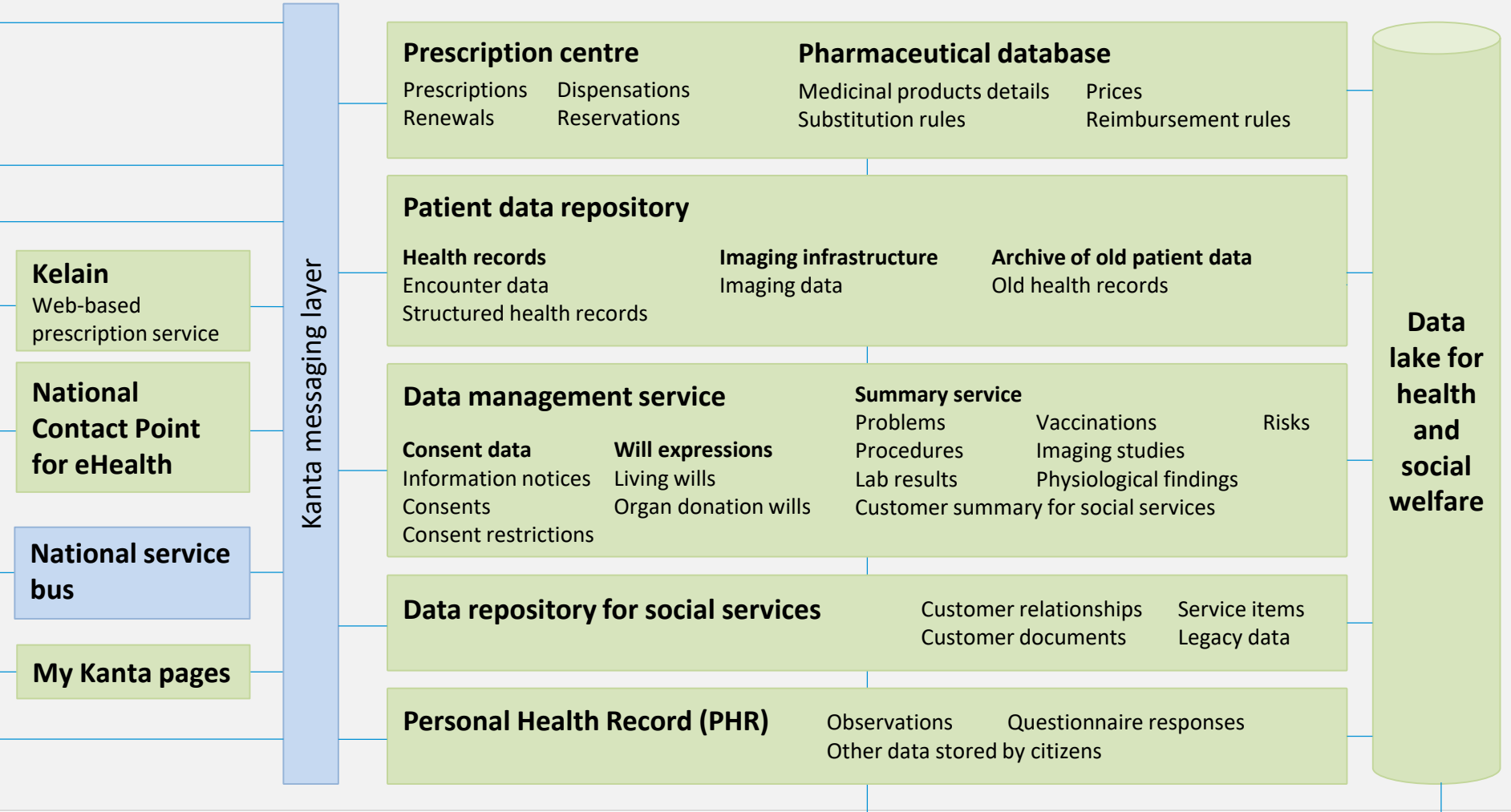
**Healthcare professionals**

**eHealth Digital Service Infrastructure**

**Receivers of medical certificates**

**Citizens**  
and apps used by them

*Kanta services*



**Main standards**

- HL7 V3: CDA R2 L3 and Medical Records
- HL7 FHIR (Kanta Personal Health Record)
- JSON, XHTML (PHR and social services)
- PDF/A (old patient data and social services)
- IHE IT-I Profiles (imaging and eHDSI)
- W3C XML DSig
- WS Addressing, WS-I
- TLS, X.509

*Other national services*

