



CITY OF LAKE FOREST

Community Safety Forum

October 9, 2023



CITY OF LAKE FOREST

Orange County Sheriff's Department

Cpt. Christine Berryman
Chief of Police Services
cberryman@ocsheriff.gov
(949) 461-3541

Brittney Oldham
Crime Prevention Specialist
boldham@ocsheriff.gov
(949) 461-3546

OCSD Resources



Home Safety

- Increase lighting
- Install surveillance cameras
- Secure doors and windows
- Pick up flyers and newspapers
- Acknowledge you're home



Vehicle Safety

If possible, park in garage, driveway or well-lit areas

Thefts/Burglaries

- ▶ Hide or remove valuables
- ▶ Close windows
- ▶ Lock doors



Catalytic Converters

- ▶ Etch license plate number on catalytic converter
- ▶ Install clamp/anti theft device



Stolen Vehicles

- ▶ Turn off and lock vehicle
- ▶ Utilize alarm system
- ▶ Never leave keys in vehicle



Personal Safety

- Be alert and aware of your surroundings
- Keep a safe distance from strangers who approach for conversation or ask directions
- Drive to the nearest police station if you suspect someone is following you or call 9-1-1



Mail and Package Theft

- Check for mail and packages daily
- Register for Informed Delivery through USPS
- Track packages and sign up for delivery alerts
- Have a neighbor pick up your mail and packages when you're away or on vacation



Mail theft tends to increase around tax season and the holidays



Reporting

Emergency



911

Crimes in progress
Life threatening situations
Medical emergency
Physical altercation
Injury vehicle collision
Fire

Non-emergency



949-770-6011

Crimes not in progress (reports)
Suspicious persons/activity
Parking complaint
Noise disturbance
Neighborhood issue
Welfare check
Reckless drivers/riders



Neighborhood Watch

- Get to know your neighbors
- Learn effective crime prevention strategies
- Recognize and report suspicious activity
- Work collaboratively on neighborhood concerns





CITY OF LAKE FOREST

Traffic Engineering Division

Tran Tran, P.E.
Traffic Engineering Manager
ttran@lakeforestca.gov
(949) 461-3485

The Meadows



CVC Enforcement – Private Property

Consideration of CVC Enforcement within Private Property:

- Traffic Control Devices/Signs
- Speeding
- Parking

Process (HOA Responsibility):

- Formal Petition
- Traffic Study/Report
 - CA MUTCD compliance
 - Engineering and Traffic Survey – Establishing Speed Limits
 - Parking
- City Review
- Public Hearing – City Council Meeting



Parking



E-Bikes: Classifications

- Class 1
 - Low speed, pedal-assisted e-bike, equipped with a motor that provides assistance when the rider is pedaling up to 20 MPH



750 Watts or
Less!



E-Bikes: Classifications

- Class 2
 - Low speed, throttle-assisted or pedal-assisted e-bike, equipped with a motor that can propel the e-bike without the rider pedaling up to 20 MPH



750 Watts or
Less!



E-Bikes: Classifications

- Class 3
 - Speed pedal-assisted e-bike, equipped with a motor that provides assistance when the rider is pedaling up to speeds of 28 MPH

750 Watts or
Less!

750 Watts or
above = DMV
Requirements



Restricted on
Sidewalks and
Bike Trails

Public Safety – E-Bikes

City Regulations:

- Regulates the speed of E-Bikes and other motorized transportation devices
 - *5 MPH or less along public sidewalks*
 - *10 MPH or less along trails, pathways, or roads (unless posted otherwise)*
- Prohibiting unsafe behavior that could endanger persons or animals while using e-bikes and other motorized transportation devices
- Prohibiting the use of E-Bikes and other motorized transportation devices at the Etnies Skatepark
- Codifying State law requiring users under 18 years of age to wear a helmet



Class I - Aliso Creek Trail



Class II - Glenn Ranch Road On-Street Bike Lane



Class III - Serrano Road (by Serrano Creek Park)



E-Bikes: Guidelines

- Bicyclists and e-bike riders are subject to all the same rules of the road as motorists
- Riders can follow guidelines from OCTA that cover:
 - Rules of the Road
 - Passengers

OCTA Website:

<https://www.octa.net/getting-around/active/oc-bike/e-bikes/>



Rules of the Road



• Under must v
ment is 18 years

• and signals a
and e-bike ri

• bikes, eve

• ow of traffic



• r a
S,



Passengers

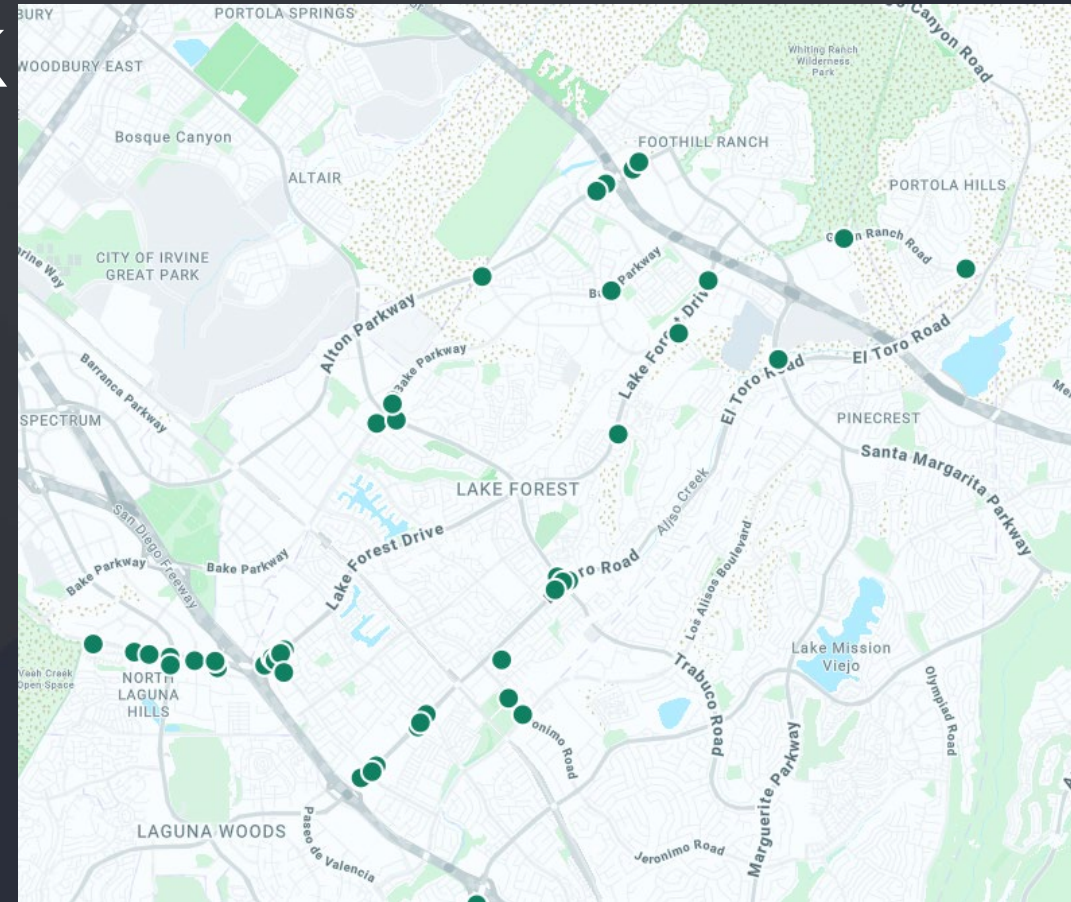
- Many e-bike designs can be converted to carry passengers.
- Passengers can be seated or standing.
- Classified as mopeds.



• E-bikes can be converted to carry passengers.



Public Safety - Flock



Flock Safety Website:

<https://www.flocksafety.com/industries/hoa-board-member>



Overview of the Public Review Process

3 Proposed Industrial Buildings on Enterprise Way

Gayle Ackerman, AICP
Director of Community Development
(949) 461-3463



The Planning Process

- Application Received
- Staff Planner Assigned
- Review of Project Plans
 - General Plan
 - Zoning
 - Development Standards (setbacks, parking, height, etc.)
 - Environmental Determination
 - Meetings with applicants, interested parties, technical experts
 - Develop conditions of approval
 - Prepare staff report with recommendation
 - Public Notice
- Planning Commission Public Hearing/Appeal to City Council



3 Industrial Projects Proposed on Enterprise Way

- Project 1: Under Review
- Project 2: Draft MND released for public comment Sept. 2023
- Project 3: Under Review

Planning Process

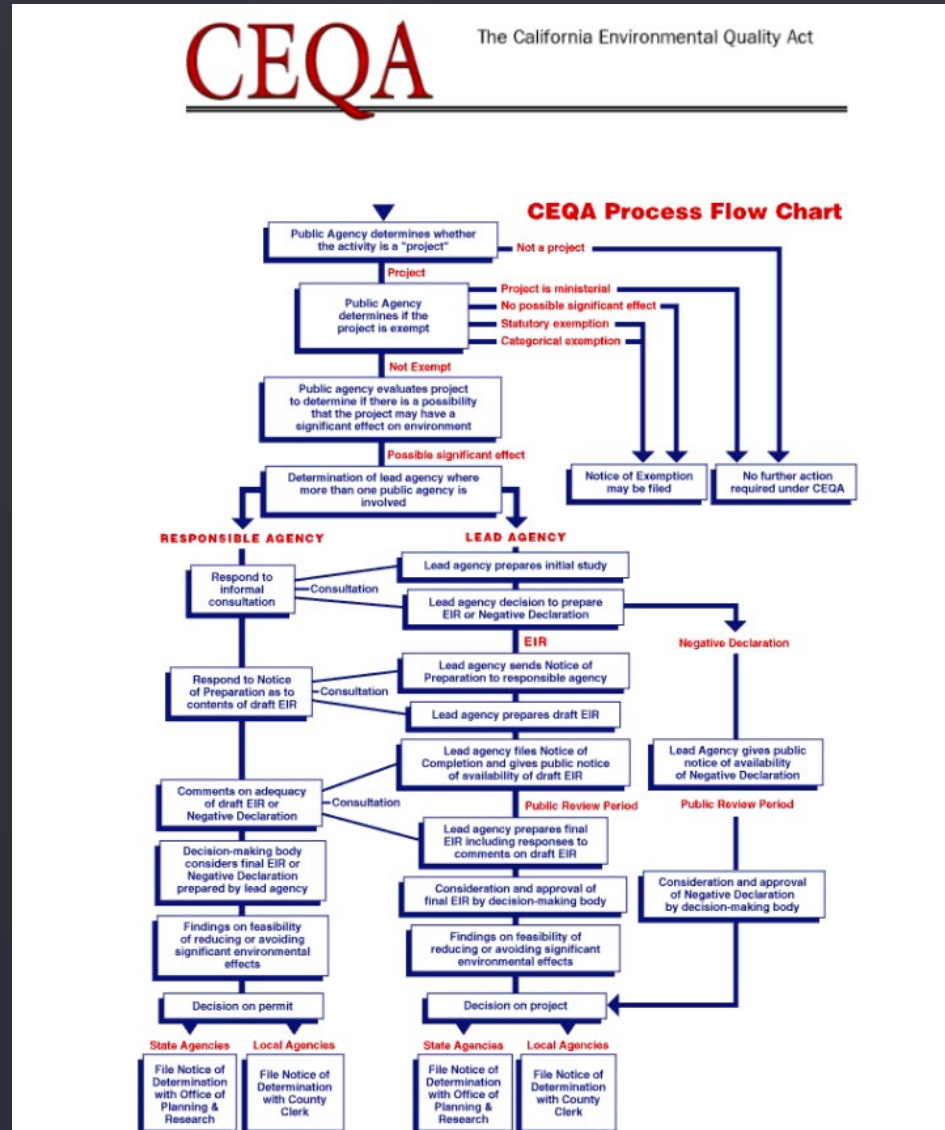
1. Review of Plans
2. General Plan: Industrial
3. Zoning: Pacific Commercentre Planned Community Light Industrial

Environmental Process

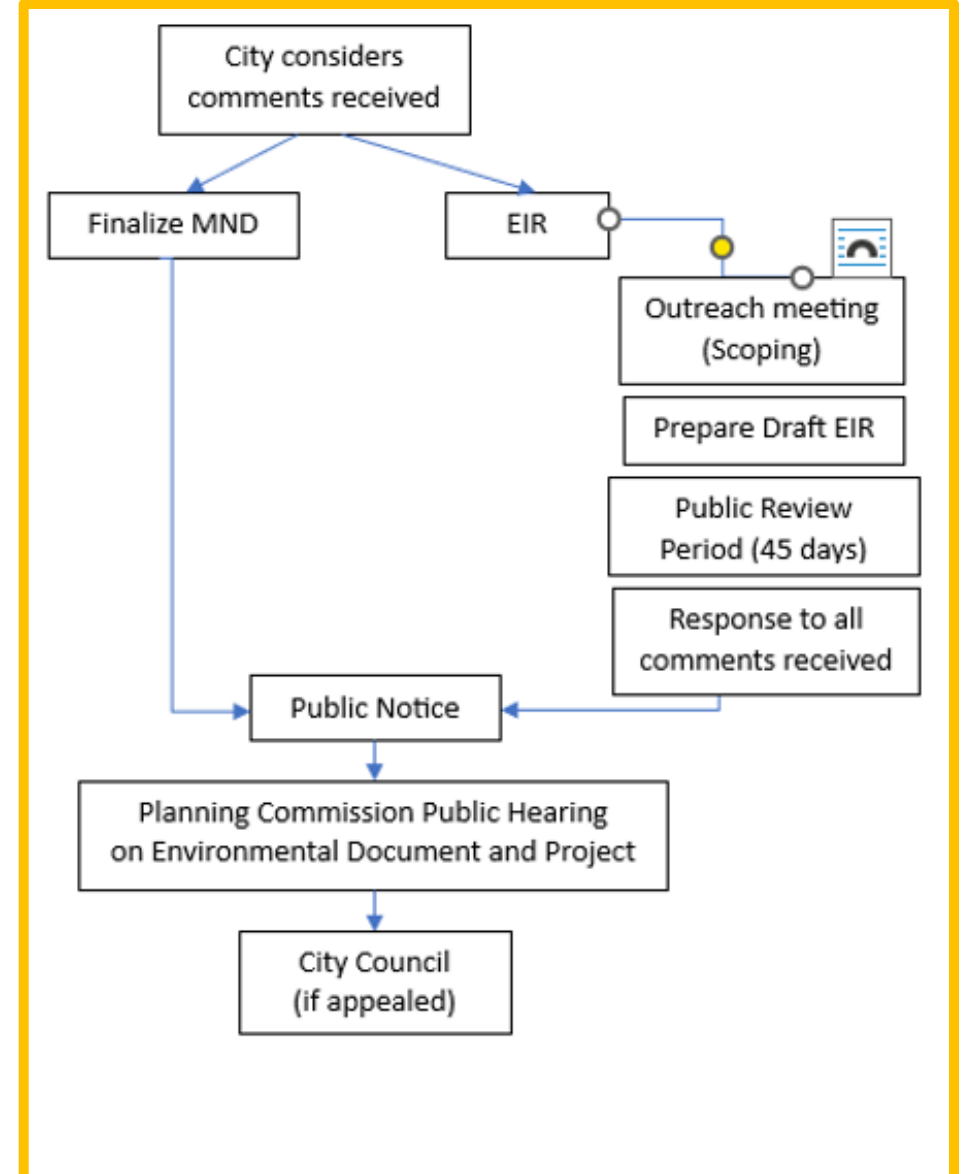
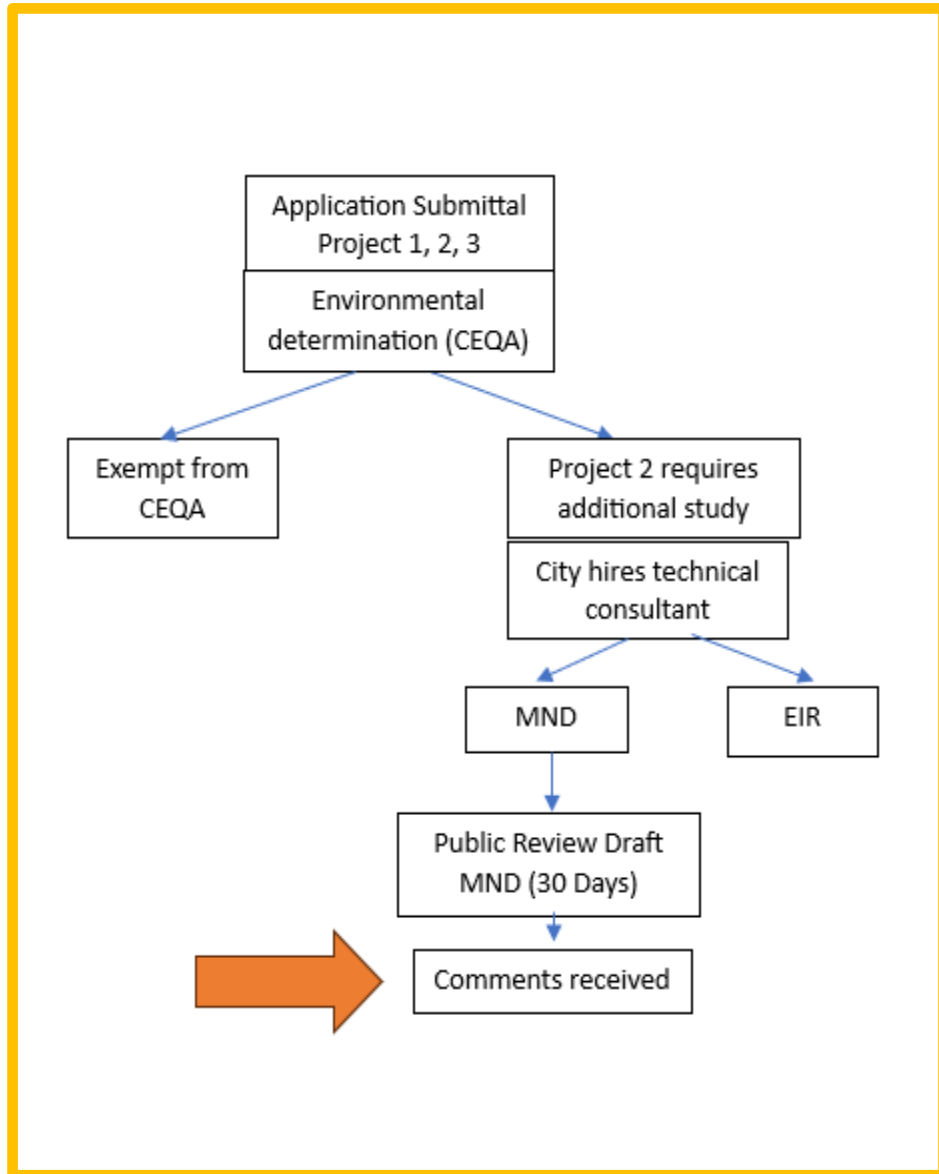
4. Review of Technical Studies, including:
 - Traffic
 - Greenhouse Gases (GHG)
 - Noise
 - Air Quality
 - Hydrology and Water Quality
 - Geology and Soils



California Environmental Quality Act (CEQA)



Where are we in the process today?



MND Process vs. EIR Process

ACTION	MITIGATE NEGATIVE DECLARATION (MND)	ENVIRONMENTAL IMPACT REPORT (EIR)
Scoping Meeting		X
Technical Experts Hired	X	X
Mitigation Measures Identified for Any Impacts	X	X
Public Review of Document – 30 Days	X	
Public Review of Document: 45 Days		X
Response to Comments	X	X
Public Hearing	X	X

Role of City/Community Development Department

- We are not an advocate for the development.
- We prepare information for public/decision makers
- We hire technical consultants to study complex issues and develop mitigation measures to address any potential impacts.
- We develop conditions of approval to ensure compatibility with adjacent land uses
- We provide information available
- We are always available to meet with the public

- Project 1: Marie Luna 949/461-3466
- Project 2: Jennifer Mansur 949/461-3472
- Project 3: Ron Santos 949/461-3449

Thank you!

Questions?

