



Lenovo Packaging Specification 45J5387

Packaging Cosmetic Requirements

Written by:	Benson Li	29JUN2023	WW Packaging Engineer
Reviewed by:	Yuhji Takizawa	29JUN2023	WW Packaging Engineer
	KK Chen	29JUN2023	WW Packaging Engineer
	Jiale Liu	29JUN2023	WW Packaging Engineer
	Yansong Chi	29JUN2023	WW Packaging Engineer
Approved by:	Royal Bai	05JUL2023	Sr. Manager, Packaging Engineering

PN 45J5387 Page 1 of 10	REV: A4	Release Date: 05JUL2023				
----------------------------	---------	----------------------------	--	--	--	--

This document is property of Lenovo. Its use is authorized only for responding to a request for quotation or for the performance of work for Lenovo. All questions must be referred to Lenovo purchasing department.



REVISION HISTORY

Rev	Revision Description	Date	Approved by
A0	Creation	30OCT2009	Speed Liu
A1	"Appendix- JP packaging requirement"	11JAN2010	Sarah Yu
A2	Update the picture of wrinkle carton box	26JAN2010	Sarah Yu
A3	Update Lenovo logo with new format	03APR2018	Royal Bai
A4	Update typical pictures of Cosmetic Damage (Examples) carton box	30JUN2023	Royal Bai

PN 45J5387 Page 2 of 10	REV: A4	Release Date: 05JUL2023				
----------------------------	---------	----------------------------	--	--	--	--

This document is property of Lenovo. Its use is authorized only for responding to a request for quotation or for the performance of work for Lenovo. All questions must be referred to Lenovo purchasing department.



Table of Contents

1.0 Introduction..... 4

 1.1 Purpose..... 4

 1.2 Scope..... 4

 1.3 Compliance 4

2.0 Packaging Cosmetic Requirements 4

 2.1 General Cosmetic Requirements..... 4

 2.2 Packaging Cosmetic Damage (Examples)..... 5

Appendix 8

Japan packaging requirement supplement 8

 A. Japan Primary packaging Cosmetic Requirement..... 8

 B. Japan overpack packaging Cosmetic Requirement..... 9

PN 45J5387 Page 3 of 10	REV: A4	Release Date: 05JUL2023				
----------------------------	---------	----------------------------	--	--	--	--

This document is property of Lenovo. Its use is authorized only for responding to a request for quotation or for the performance of work for Lenovo. All questions must be referred to Lenovo purchasing department.

1.0 Introduction

1.1 Purpose

The purpose of this document is to establish baseline criteria for cosmetic packaging requirements. Lenovo packaging is a key component for a successful customer experience and delivering pristine packaging materials to Lenovo customers is a global requirement.

- Document and communicate packaging cosmetic requirements for Lenovo product
- Provide examples of non-compliant cosmetic packaging damage
- Outline expectations for inspection criteria

1.2 Scope

This specification applies to all Lenovo packaged product. The requirements in this document extend from packaging vendors to in-house Lenovo manufacturing and ODM partners.

1.3 Compliance

Compliance with the requirements herein will be enforced as a condition of purchase per Lenovo purchase contracts, either for the supply of parts or subcomponents or for the purchase of packaging materials for the shipment and distribution of Lenovo products and integrated hardware solutions. When the requirements of this specification conflict with applicable governmental regulations or legislation the more stringent requirements shall take precedence.

2.0 Packaging Cosmetic Requirements

2.1 General Cosmetic Requirements

- Quality checkpoints throughout the supply chain are required to ensure packaging material adheres to the requirements of this document. It is required that a detailed Inspection process review all product packaging prior to leaving manufacturing. The quality inspection applies to all packaging vendors as well as manufacturing facilities that package Lenovo product.
- All packaging material with cosmetic damage as defined in this specification is to be rejected. Shipping Lenovo product with cosmetic damage is not acceptable. In the event that repeated damage occurs; the supplier / ODM is responsible for corrective actions that will support a long-term process that adheres to this document.
- Spare (replenishment) packaging for re-boxing product may be required at the request of Lenovo procurement.

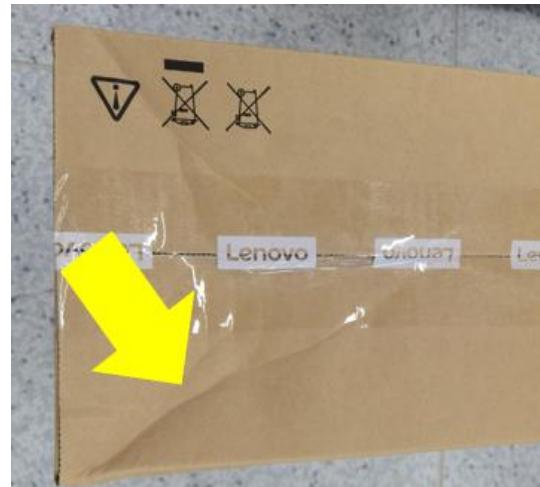
PN 45J5387 Page 4 of 10	REV: A4	Release Date: 05JUL2023				
----------------------------	---------	----------------------------	--	--	--	--

This document is property of Lenovo. Its use is authorized only for responding to a request for quotation or for the performance of work for Lenovo. All questions must be referred to Lenovo purchasing department.

2.2 Packaging Cosmetic Damage (Examples)

Packaging cosmetic damage as classified and shown below is **not** acceptable. The images referenced are for visual representation of **non-compliant packaging**. If similar damage is present; the package is to be rejected and/or re-boxed.

2.2.1 Wrinkle



2.2.2 Crush / Dent



PN 45J5387 Page 5 of 10	REV: A4	Release Date: 05JUL2023				
----------------------------	---------	----------------------------	--	--	--	--

This document is property of Lenovo. Its use is authorized only for responding to a request for quotation or for the performance of work for Lenovo. All questions must be referred to Lenovo purchasing department.



2.2.3 Bloat



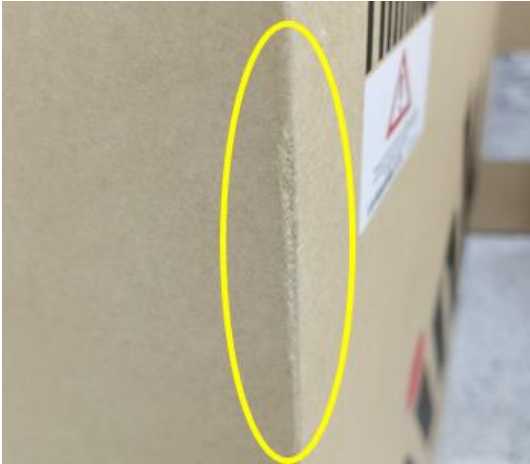
2.2.4 Puncture



PN 45J5387 Page 6 of 10	REV: A4	Release Date: 05JUL2023				
----------------------------	---------	----------------------------	--	--	--	--

This document is property of Lenovo. Its use is authorized only for responding to a request for quotation or for the performance of work for Lenovo. All questions must be referred to Lenovo purchasing department.

2.2.5 Abrasion



PN 45J5387 Page 7 of 10	REV: A4	Release Date: 05JUL2023				
----------------------------	---------	----------------------------	--	--	--	--

This document is property of Lenovo. Its use is authorized only for responding to a request for quotation or for the performance of work for Lenovo. All questions must be referred to Lenovo purchasing department.

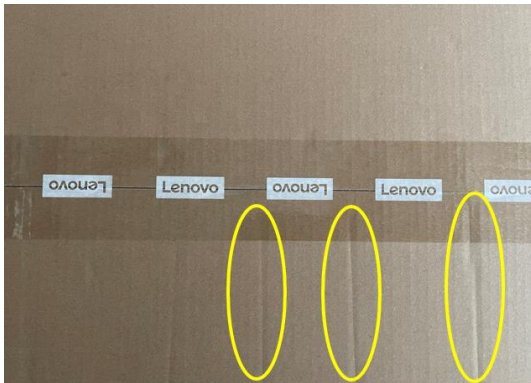
Appendix

Japan packaging requirement supplement

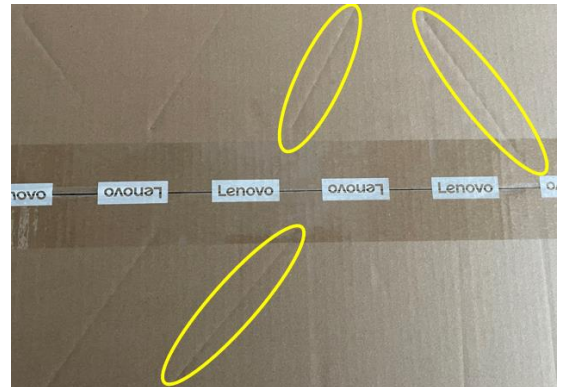
A. Japan Primary packaging Cosmetic Requirement

Except for compliance of Section 2.0, the stricter Japan packaging requirements are:

- Primary packaging material with **wrinkle** depends on the wrinkle directions.
If the wrinkle is formed originally along corrugated flute direction, it's acceptable (refer to picture 1)
If the wrinkle is formed by the outside force and not along the corrugated flute direction, it's **not** acceptable (refer to picture 2).

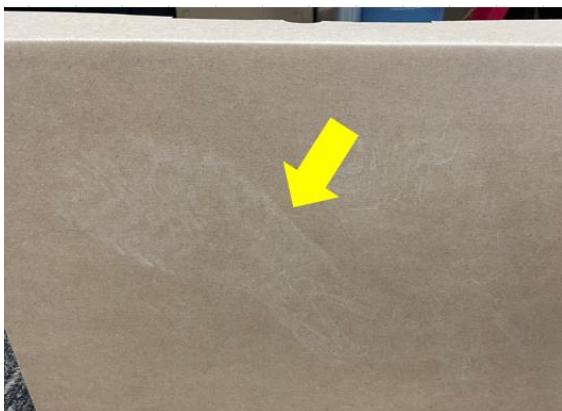


Picture 1: Wrinkle along corrugated flute direction

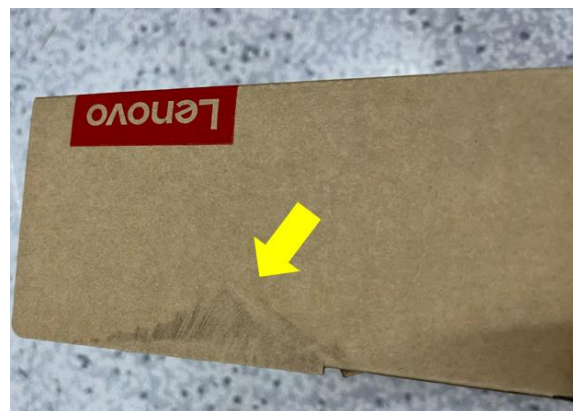


Picture2: Wrinkle formed by Outside force

- Primary packaging material with cosmetic damage is unacceptable even if the crush/dent, bloat, puncture or abrasion is small or inconspicuous.
- Shipment with footprint can't be acceptable at all. (See picture 3)
- Primary box with such blot (as shown in picture 4) is not acceptable.



Picture3: Shipment with footprint



Picture4: Shipment with blot

PN 45J5387 Page 8 of 10	REV: A4	Release Date: 05JUL2023				
----------------------------	---------	----------------------------	--	--	--	--

This document is property of Lenovo. Its use is authorized only for responding to a request for quotation or for the performance of work for Lenovo. All questions must be referred to Lenovo purchasing department.

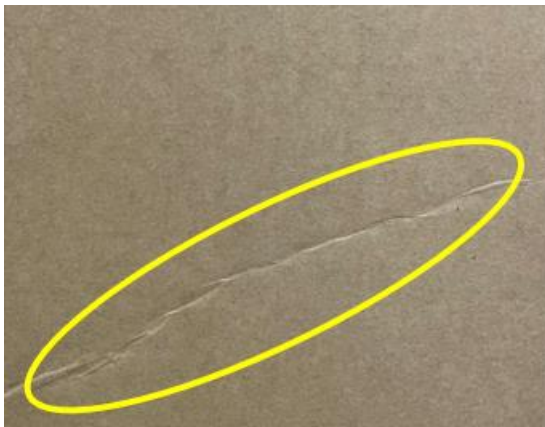
B. Japan overpack packaging Cosmetic Requirement

1.2.1 General Cosmetic Requirements

Detailed JP over package cosmetic requirements are defined as below. In the event that repeated/ unacceptable damage occurs; the supplier / ODM is responsible for corrective actions that will support a long-term process that adheres to this document.

1.2.2 over package Cosmetic Damage (Examples)

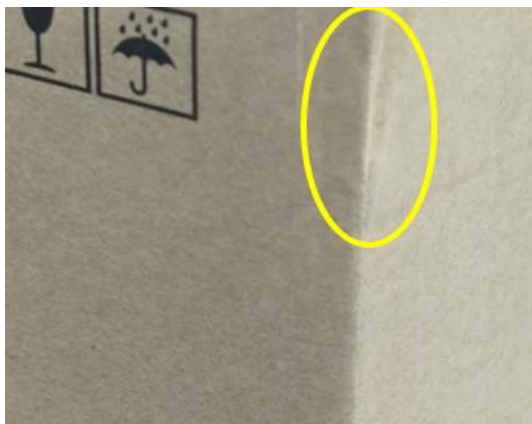
- Cosmetic damages on overpack as classified and shown in picture 5-10 are acceptable if primary package is acceptable (comply with section 2.0 and Appendix 1.1).



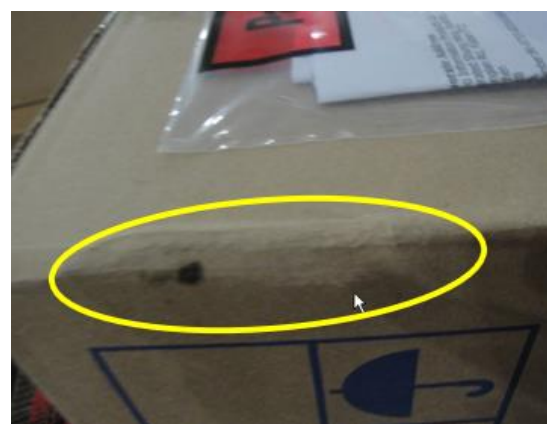
Picture5: Wrinkle



Picture6: Crush



Picture7: Dent



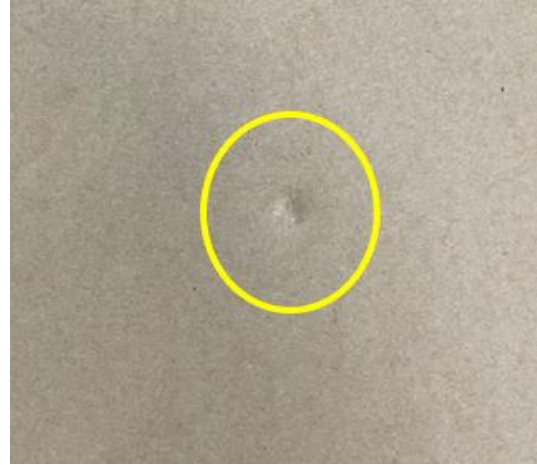
Picture8: Blot

PN 45J5387 Page 9 of 10	REV: A4	Release Date: 05JUL2023				
----------------------------	---------	----------------------------	--	--	--	--

This document is property of Lenovo. Its use is authorized only for responding to a request for quotation or for the performance of work for Lenovo. All questions must be referred to Lenovo purchasing department.



Picture 9: Abrasion on over package



Picture10: Punctures not through and diameter less than 2cm

- Unacceptable cosmetic damages on overpack
 - 1) Less than 2 cm diameter puncture is acceptable (see picture 10). Overpack with more than two punctures is **not** acceptable if it is punctured through.

*****END OF DODUMENT*****

PN 45J5387 Page 10 of 10	REV: A4	Release Date: 05JUL2023				
--------------------------------	---------	----------------------------	--	--	--	--

This document is property of Lenovo. Its use is authorized only for responding to a request for quotation or for the performance of work for Lenovo. All questions must be referred to Lenovo purchasing department.