

FOCUS online

NCSU LIBRARIES

VOLUME 22 NO. 2

2002

PART IV LIBRARY DEVELOPMENT

A LASTING LEGACY

LIBRARY FRIENDS INDUCTED INTO
PULLEN SOCIETY

VOLUME 22 NO. 2, PART I
LIBRARY NEWS

VOLUME 22 NO. 2, PART II
LIBRARY SEMINARS AND EVENTS

VOLUME 22 NO. 2, PART III
NEW LIBRARY PERSONNEL
May–September 2001

VOLUME 22 NO. 2, PART V
FRIENDS OF THE LIBRARY



TERRY CROW, NCSU LIBRARIES.

OTHER LINKS OF INTEREST

[FRIENDS OF THE LIBRARY](#)

[LIBRARY DEVELOPMENT](#)

[SCHOLARLY](#)

[COMMUNICATION CENTER](#)

Photographs by Sheri Thomas, NCSU, unless otherwise noted.

Please direct queries or feedback about this issue to terry_crow@ncsu.edu.

© NCSU Libraries 2002
CB 7111
Raleigh, N.C. 27695-7111

A Lasting Legacy

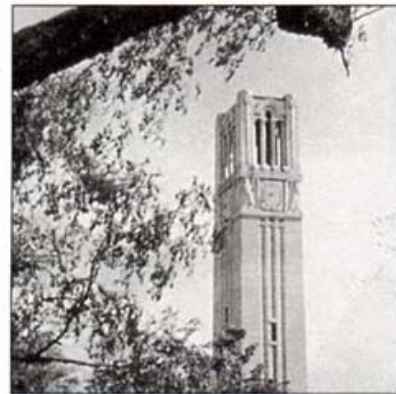
BY TRACY PROCTOR, DEVELOPMENT

The heart of a library is its collections.

The NCSU Libraries' collection of books, journals, and electronic resources provides the materials necessary for teaching and research. The need for faculty and students to engage in serious scholarship consistently requires the Libraries to add to, update, and preserve its collection. Yet, the skyrocketing costs of print and electronic materials threaten to limit the resources the library can offer. State support alone will not provide the funds necessary to maintain the quality of the collection. To protect the gains the Libraries has made and to continue providing scholars with the research materials they need, the library must supplement its budget with private funding.

Donors like you can help the NCSU Libraries remain the gateway to knowledge at NC State by establishing a library endowment for collections. Collection endowments are designed to support the Libraries' collections in all formats, whether paper or electronic. They can be set up to provide support for collections in general or for an area of university concentration such as genomics, world literature, or mechanical engineering. A library endowment can be established with a minimum contribution of \$15,000, which can be paid over five years with a pledge agreement.

The NCSU Libraries' established an Incubator Endowment to provide an alternative for donors who want to support the library's collections but who need more than five years to achieve full endowment status. These accounts are named funds created with an initial gift of \$1,000 or more and are administered within an endowment held by the Libraries. Just like full library endowments, a donor can name an Incubator Endow-



*J. Lawrence
and Ella H. Apple
Library Endowment*

NCSU LIBRARIES

*The J. Lawrence and Ella H. Apple Library Endowment, founded by current Friends of the Library board president Lawrence Apple and his wife Ella, supports the NCSU Libraries' collection in all subjects. Recently, income from this fund made it possible for the Libraries to purchase *Evolution Equations in Thermoelasticity* by Song Jiang and Reinhard Racke.*

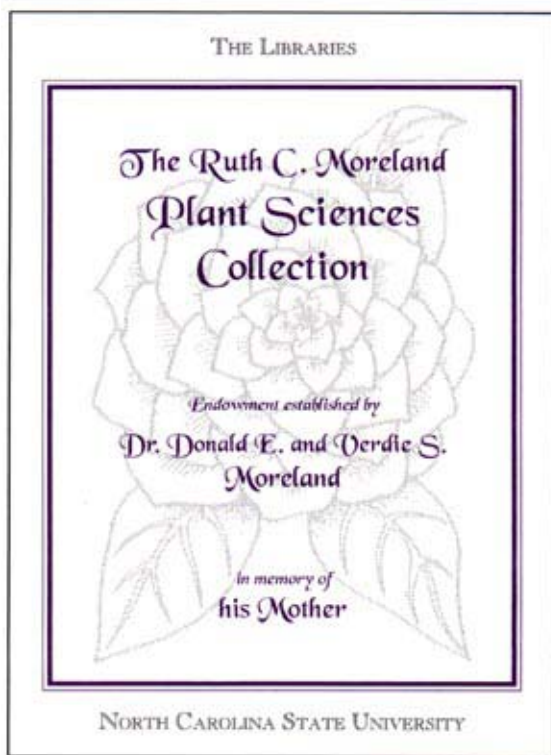
ment and select a preference for a collection area.

Once an endowment is fully funded, the library designs a customized bookplate. A donor may choose to provide family photographs or art work that can be used as a design element for the bookplate, which is printed on preservation quality, acid-free paper and mounted inside all the materials purchased with income from the endowment.

By establishing collection endowments, donors ensure that the heart of the library remains strong. Tomorrow, next year, or even decades from now, students and faculty will use the materials made available by these gifts. Each time scholars open a book and see a bookplate bearing the name of an endowment, they will realize that library donors believed enough in education

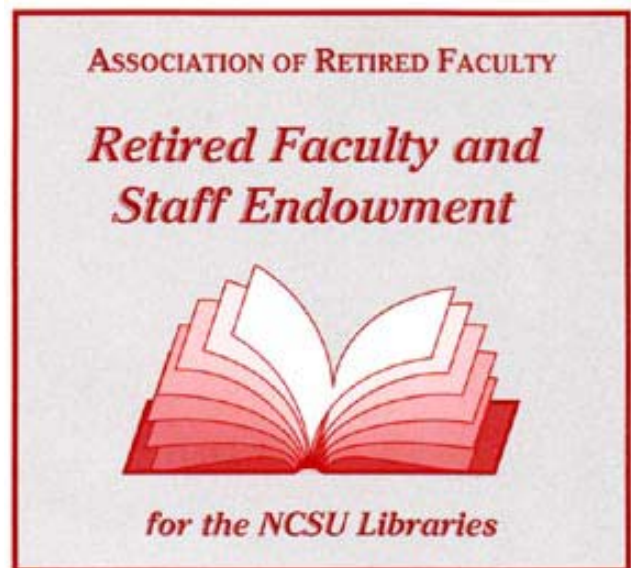
and research to provide them with the necessary materials.

Your generosity and that of other donors provides a lasting legacy. For more information about full library endowments or the Incubator Endowment, please call Tracy Proctor, director of Development, at (919) 515-3339, or send an electronic-mail message to tracy_proctor@ncsu.edu. ❖



Longtime library supporters Donald and Verdie Moreland established the Ruth C. Moreland Plant Sciences Collection Endowment to honor Donald Moreland's mother. This year, income from the endowment allowed the NCSU Libraries to add Membrane Biophysics: As Viewed from Experimental Bilayer Lipid Membranes, edited by H. Ti Tien and Angelica Ottova-Leitmannova, to its collection.

Retired NC State faculty and staff created the Retired Faculty and Staff Library Endowment to support the general development and enhancement of the NCSU Libraries, including its collection. Materials purchased with income from the endowment cross many disciplines, such as the recent addition of City Literacies: Learning to Read Across Generations and Cultures by Eve Gregory and Ann Williams.



Library Friends Inducted into Pullen Society

BY TRACY PROCTOR, DEVELOPMENT

North Carolina State's R. Stanhope Pullen Society, named for the benefactor who donated the sixty-two acres of land that became the original campus, recognizes alumni and friends who invest in the future of the university through deferred gifts. The NCSU Libraries is pleased to announce that the following library supporters have been inducted into the Pullen Society:

A. J. and Thelma Bartley
Donald and Verdie Moreland
Porter Williams, Jr.

Deferred gifts such as bequests, charitable remainder trusts, retained life estates, or gift annuities represent a deep commitment to the Libraries and help to provide a secure financial future. Properly planned deferred gifts can do more than help the Libraries—they can supplement income; reduce estate, income, or capital gains taxes; and provide for a donor's family.

The NCSU Libraries is deeply grateful for the generosity and vision of these friends. More information about the Pullen Society or deferred giving is available from NC State Director of Gift Planning Joan DeBruin at (919) 515-9076. ❖



*Does your estate plan already include the NCSU Libraries?
If so, you are eligible for membership in the Pullen Society.
Call Joan DeBruin at (919) 515-9076 or Tracy Proctor at
(919) 515-3339 to let them know. ❖*





Focus, a newsletter published three times a year, seeks to promote the services, activities, needs, and interests of the NCSU Libraries to the university, the Friends of the Library, and beyond.

Editor: Terrell Armistead Crow.

NCSU Libraries Homepage: <http://www.lib.ncsu.edu/>