

FOCUS online

NCSU LIBRARIES

VOLUME 23 NO. 2

2003

PART IV LIBRARY DEVELOPMENT

REMEMBERING THE
NCSU LIBRARIES

LIBRARY FRIENDS HONORED AT
THE PULLEN SOCIETY RECEPTION

VOLUME 23 NO. 2, PART I
LIBRARY NEWS

VOLUME 23 NO. 2, PART II
LIBRARY SEMINARS AND EVENTS

VOLUME 23 NO. 2, PART III
NEW LIBRARY PERSONNEL
JULY–AUGUST 2002

VOLUME 23 NO. 2, PART V
FRIENDS OF THE LIBRARY



TERRY CROW, NCSU LIBRARIES.

OTHER LINKS OF INTEREST

[FRIENDS OF THE LIBRARY](#)

[LIBRARY DEVELOPMENT](#)

[SCHOLARLY](#)

[COMMUNICATION CENTER](#)

Photographs by Sheri D. Thomas, NCSU, unless otherwise noted.

Please direct queries or feedback about this issue to terry_crow@ncsu.edu.

© NCSU Libraries 2003
CB 7111
Raleigh, N.C. 27695-7111

DEVELOPMENT UPDATES

BY TRACY PROCTOR, LIBRARY DEVELOPMENT

Remembering the NCSU Libraries

Over the past year, the NCSU Libraries has been saddened by the loss of two of its most enthusiastic supporters, Micou F. Browne and Paul Harvey. These men demonstrated their love of the Libraries in countless ways during their lifetimes and reaffirmed their commitment by leaving a bequest in their wills.

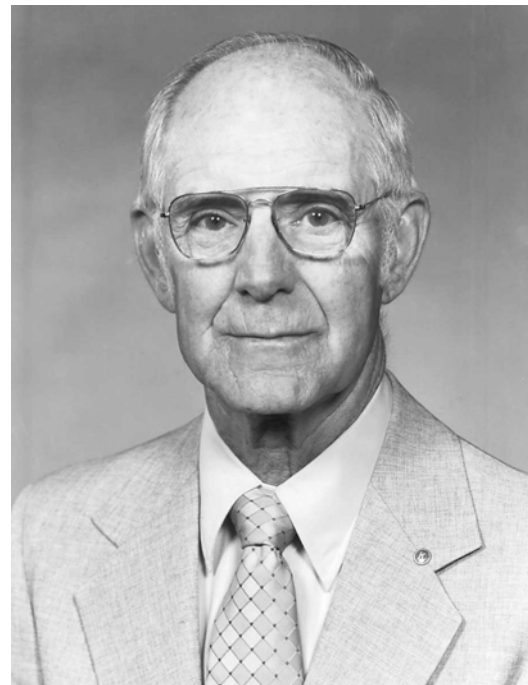
Micou F. Browne graduated from NC State in 1936 and began a career in life insurance, working at Occidental Life Insurance Company of North Carolina and at Durham Life Insurance Company where he retired as executive vice president. He actively participated in the Raleigh community as a member of the Jaycees, Kiwanis Club, and as a trustee for Peace College. When planning his estate, he decided to support the NCSU Libraries and left a bequest that established an endowment. The Micou and Katherine Browne Library Endowment supports the NCSU Libraries' management collection and entomological special collections in all formats.

Paul Harvey, a plant geneticist and pioneer in the field of corn breeding, taught at NC State for more than fifty years. He was appointed the William Neal Reynolds Distinguished Professor and became the founding head of the Department of Crop Science in the College of Agriculture and Life Science. He established a library incubator endowment to honor the memory of his first wife, Ethel, which later grew into a full library endowment. His bequest significantly added to the Paul H. and Ethel M. Harvey Library Endowment, which provides income supporting the NCSU Libraries' collections in all subjects and formats.

Through their estate plans, these men and their families made important gifts to the library. Their endowments provide a lasting legacy by



[Left to right] Micou F. Browne and his son, Micou M. Browne.



Paul Harvey. From Special Collections, NCSU Libraries.

ensuring that the library will be able to provide faculty and students with much-needed resources. The Browne and Harvey names will be forever associated with an organization they cared deeply about.

If you are interested in learning more about supporting the NCSU Libraries through an estate plan, please call or send an electronic-mail message to either Tracy Proctor, director of library development (919-515-3339 or tracy_proctor@ncsu.edu), or to Joan DeBruin, director of gift planning for NCSU (919-515-9076 or joan_debruin@ncsu.edu). ❖

Library Friends Honored at the Pullen Society Reception

NC State's Stanhope Pullen Society, named for the benefactor who donated the sixty-two acres of land that became the original campus, recognizes alumni and friends of NC State who invest in the future of the university through deferred gifts. Current Pullen Society members and new inductees were recognized at an elegant reception on October 11, 2002. Jack and Gloria Norwood, two library supporters, were inducted into the Pullen Society this year.

Deferred gifts such as bequests, charitable remainder trusts, retained life estates, or gift annuities represent a deep commitment to the NCSU Libraries and help to provide a secure financial future. Properly planned deferred gifts can do more than help the Libraries—they can supplement income; reduce estate, income, or capital gains taxes; and provide for a family.

The NCSU Libraries is deeply grateful for the generosity and vision of its friends. More information about the Pullen Society or deferred giving is available from NC State Director of Gift Planning Joan DeBruin at (919) 515-9076. ❖

*Have you already
included the
NCSU Libraries in
an estate plan?*

*If so, you are
eligible for membership
in the Pullen Society.*

*Call Joan DeBruin at
(919) 515-9076 or
Tracy Proctor at
(919) 515-3339
to let them know. ❖*



Focus, a newsletter published three times a year, seeks to promote the services, activities, needs, and interests of the NCSU Libraries to the university, the Friends of the Library, and beyond.

Editor: Terrell Armistead Crow.

NCSU Libraries Homepage: <http://www.lib.ncsu.edu/>