

FOCUS online

NCSU LIBRARIES

VOLUME 25 NO. 3

2005

PART III LIBRARY DEVELOPMENT

ACHIEVE: A TRULY GREAT
LIBRARY IS WITHIN OUR GRASP;
NAMING OPPORTUNITIES

ARMSTRONG INCUBATOR REACHES
ENDOWMENT STATUS

WOODALL ENDOWMENT CREATED

VOLUME 25 NO. 3, PART I
LIBRARY NEWS

VOLUME 25 NO. 3, PART II
LIBRARY SEMINARS AND AWARDS

VOLUME 25 NO. 3, PART IV
FRIENDS OF THE LIBRARY



OTHER LINKS OF INTEREST

[FRIENDS OF THE LIBRARY](#)

[LIBRARY DEVELOPMENT](#)

[SCHOLARLY](#)

[COMMUNICATION CENTER](#)

Photographs by Becky Kirkland and Daniel Kim, NCSU, unless otherwise noted.

Please direct queries or feedback about this issue to terry_crow@ncsu.edu.

ACHIEVE: A Truly Great Library Is Within Our Grasp

BY SUZANNE WEINER, LIBRARY DEVELOPMENT

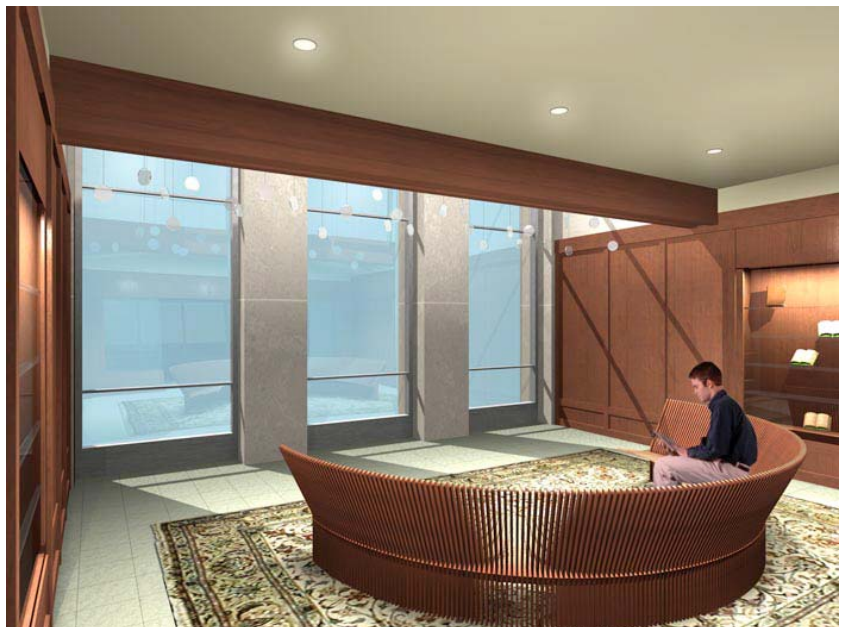
Late in 2004 the Board of Directors of the Friends of the Library and NC State's University Library Committee launched a campaign to raise additional funding to make the renovated spaces in the D. H. Hill Library more functional and attractive for library users. These funds will supplement the current bond-funded renovation in the East Wing that addresses the facet of the D. H. Hill Library that most frustrates students and faculty—the gross inadequacy of the facility. The renovated space will feature a new Special Collections Research Center with a spectacular exhibit gallery and an attractive reading room. The current reference reading room will be transformed into a technology-equipped “learning commons” where students can study, collaborate, and use the library’s rapidly expanding digital collections.

The campaign provides naming opportunities for areas and items in the renovated space. Donors have the opportunity to support the library while honoring or memorializing loved ones, mentors, or themselves. Several items have already been reserved, including the “Astral Bench,” an elegant cherry bench that will serve

as a focal point in the Conservatory. Faculty research studies, tables, and chairs have also been popular selections among individuals seeking to honor a family member. Bricks are one of the icons of this great university, and many donors have chosen to honor a friend or relative with an engraved brick that will be placed on the walkway overlooking the Brickyard at the entrance of the library.

This is an exciting time to be a part of the NC State community and the Libraries. Improvements made through these gifts will have a huge impact on the quality of the library environment and the teaching, learning, and research activities that take place there. The Wolfpack Club has made available a \$100,000 gift to match the first cash donation of \$150,000 or more. The donor will receive campaign credit for the total amount, in addition to the naming rights. Opportunities abound for NC State and library supporters! For more information about these naming opportunities, please call Director of Library Development Jim Mulvey at (919) 515-3339 or send an electronic-mail message to jim_mulvey@ncsu.edu. ❖

The astral bench shown to the right will be a focal point in the new Conservatory after renovations are completed in the D. H. Hill Library. For other naming opportunities, please review the list on page 3.



Naming Opportunities

Special Collections Research Center	\$3 million
Special Collections Reading Room	\$1 million
Reference Reading Room	\$750,000
Gallery (\$500,000) and Conservatory (\$250,000)	\$750,000
Learning and Research Center for the Digital Age	\$500,000
Theater	\$350,000
Digital Media Laboratory	\$250,000
Preservation Laboratory	\$250,000
Multimedia Seminar Center	\$150,000
Assembly Room	\$100,000
Special Collections Seminar Room	\$50,000
Collaboratory	\$25,000
Conference Room (Second Floor)	\$25,000
Graduate Study Collaboration Rooms (4)	\$25,000 ea.
Reference Services Desk	\$25,000
Student Group Study Rooms (8)	\$20,000 ea.
Interlibrary Services Center	\$20,000
Astral Bench for the Conservatory	\$15,000
Faculty Research Studies (60); 4 reserved to date	\$15,000 ea.
Special Collections Service Desk	\$15,000
Gallery Exhibit Cases (22)	\$10,000 ea.
Conservatory Light Sculpture	\$5,000
Tables in Special Collections Reading Room (8)	\$5,000 ea.
Tables in Reference Reading Room	\$3,500 ea.
Gallery Chairs (3)	\$1,500 ea.
Study Carrels/Workstations; 3 reserved to date	\$1,000 ea.
Special Collections Reading Room Chairs (64)	\$750 each
Reference Reading Room Chairs; 2 reserved to date	\$500 each
Bricks	\$250 (white), \$150 (red)

*Items in red have been reserved by donors.

DEVELOPMENT UPDATES

BY JIM MULVEY, LIBRARY DEVELOPMENT

Armstrong Incubator Reaches Endowment Status

The Friends of the Library is pleased to announce the establishment of the **Armstrong Endowment**, created by Professor Emeritus of Biochemistry Frank Armstrong and his wife Bev. The endowment will provide support of the NCSU Libraries' biological sciences collections in all formats.

Frank Armstrong retired as a professor of biochemistry in 1990 but remains extremely active with the university. He devotes many hours each week as a volunteer for the Friends of the Library Book Sale and as an adviser to students interested in medical and health-related fields.

Any library staff member who knows Armstrong would agree that he is one of the nicest and friendliest people around. Much of the success of the annual Friends of the Library Book Sale can be credited to Armstrong, who for the past ten years has sorted well over 100,000 books. He has handled some interesting and strange materials and dealt with a lot of dust, mold, and bugs. He could very reliably be found every Tuesday downstairs in the ground floor "cage" sorting through boxes and boxes of old books. Both of the Armstrongs are extremely well read on a diverse number of topics, and this has served them well in their work with the Book Sale. Bev Armstrong worked side by side with her husband for many years in sorting books until moving on to other volunteer activities.

As the library plans for its renovation of the ground and first floors of the D. H. Hill Library's East Wing, storage of Book Sale material has moved offsite to the Satellite Storage Facility. Nevertheless, Armstrong still finds time to stop and visit his numerous friends among the library staff. He also remains very

PHOTO COURTESY OF FRANK AND BEV ARMSTRONG.



Frank and Bev Armstrong, two dedicated and generous library supporters.

active by serving as part of the team forming the Emeritus Advisers Program in the College of Agriculture and Life Sciences. This program is widely known for its great success in working with preprofessional students interested in pursuing careers in health-related fields. This year, he is advising close to 100 students, many of whom will go on to graduate schools in medicine, dentistry, or optometry.

Armstrong's love of reading and his experience as the author of a widely used and extremely

successful textbook on biochemistry led to his interest in the NCSU Libraries. He believes that a library is the heart of a university, that universities are often judged by their libraries, and that a topnotch library is a powerful incentive for attracting the best faculty members. This love of the library led the Armstrongs to establish an Incubator

Endowment in 1996 supporting the Libraries' collections. Through their thoughtful and ongoing contributions, the fund has reached full endowment level, giving the NCSU Libraries a permanent source of income in support of the collections in biological sciences. A luncheon was recently held to honor the Armstrongs for their support, and the first

book purchased with income from their endowment was marked with a specially designed bookplate.

For information on this or other library endowments, please call the library's development officer, Jim Mulvey, at (919) 515-3339 or send an electronic-mail message to jim_mulvey@ncsu.edu. ❖

PHOTO COURTESY OF STEPHEN WOODALL.

Woodall Endowment Created

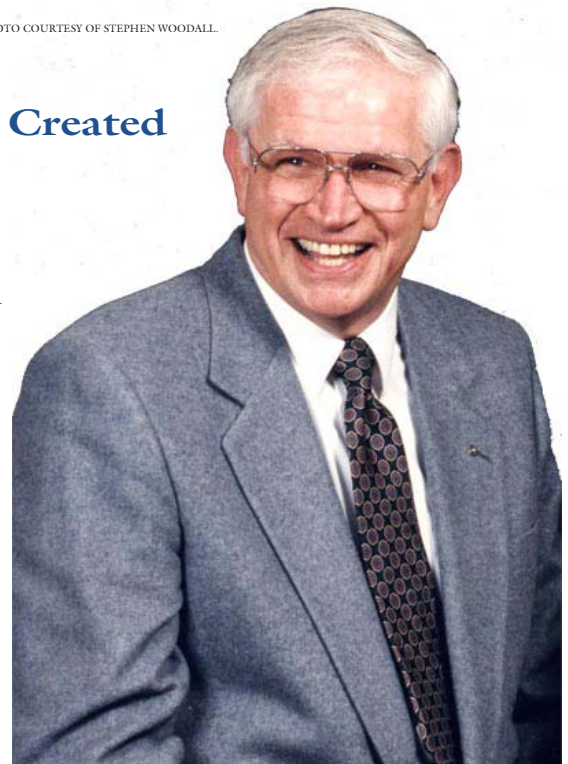
In April 2004 the NCSU Libraries lost one of its most ardent supporters with the passing of W. Lester "Woody" Woodall. Woodall embodied a spirit of volunteerism and philanthropy through his support of the Libraries and his years of service in the Raleigh Rotary Club.

After Woodall's death, the Libraries received a generous gift he had planned years before by designating the NCSU Libraries as the beneficiary of an insurance annuity. With this gift, the new **W. Lester Woodall Library Excellence Endowment** was created. This permanent fund in the NCSU Foundation will provide unrestricted support for the Libraries to use in its ongoing pursuit of excellence in all areas.

After serving in the United States Navy during World War II, Woodall graduated from NC State in 1947 with a B.S. in mechanical engineering.

Although he was not a professor, he became an authority on the use of steam and taught many classes on the subject at NC State. He spent thirty years as a manufacturer's representative and Raleigh office manager for Hoffman and Hoffman, a heating and air-conditioning equipment business.

In 1997 his class designated its golden anniversary gift to the Libraries, which inspired Woodall to consider how he might make a significant contribution of his own. In return for his generosity, the university welcomed Woodall as a member of the R. Stanhope Pullen Society, which comprises NC State supporters who have made a planned or deferred gift to benefit any area of the university. His work and charitable interests underscore why he and



others of his generation have come to be known as the "Greatest Generation."

He was a long-time member of the Raleigh Rotary Club and served as its president from 1969 to 1970. He also recruited former NC State Chancellor Marye Anne Fox to join the Rotary Club. His son Stephen credits his father's lifetime commitment to giving



Focus, a newsletter published three times a year, seeks to promote the services, activities, needs, and interests of the NCSU Libraries to the university, the Friends of the Library, and beyond.

Editor: Terrell Armistead Crow.

NCSU Libraries homepage: <http://www.lib.ncsu.edu/>

and volunteering to an experience he had as a student at NC State in the 1940s. He organized a successful student fundraising campaign to have chimes placed in the Bell Tower. Stephen Woodall believes the success of this

project led to his father's philanthropic spirit and interest in "giving back."

Memorial contributions may be made to the W. Lester Woodall Library Excellence Endowment and sent to the Friends of the Library, Campus

Box 7111, Raleigh, N.C. 27695. For information on this or other library endowments, call Jim Mulvey at (919) 515-3339 or send an electronic-mail message to jim_mulvey@ncsu.edu. ❖