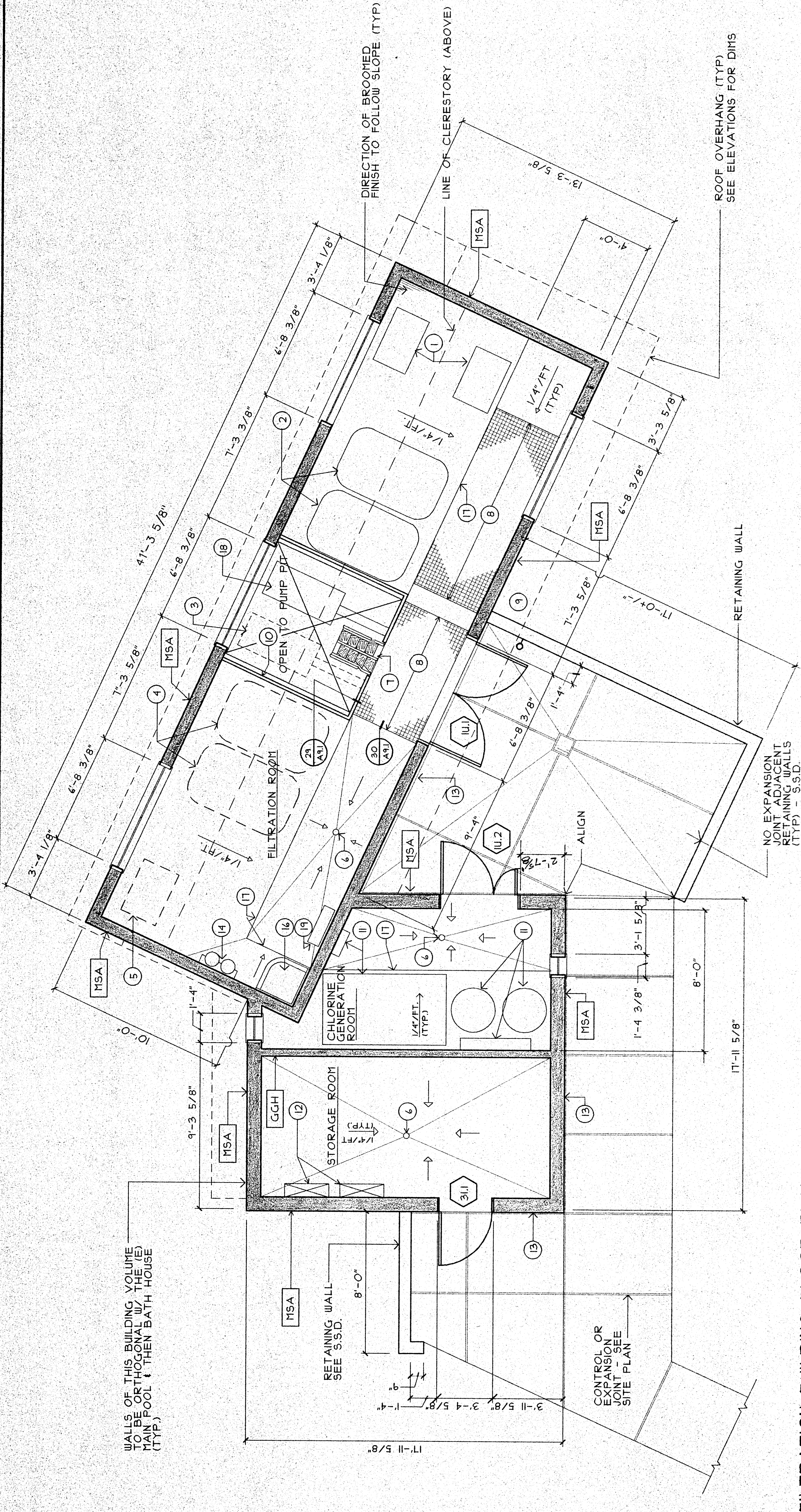
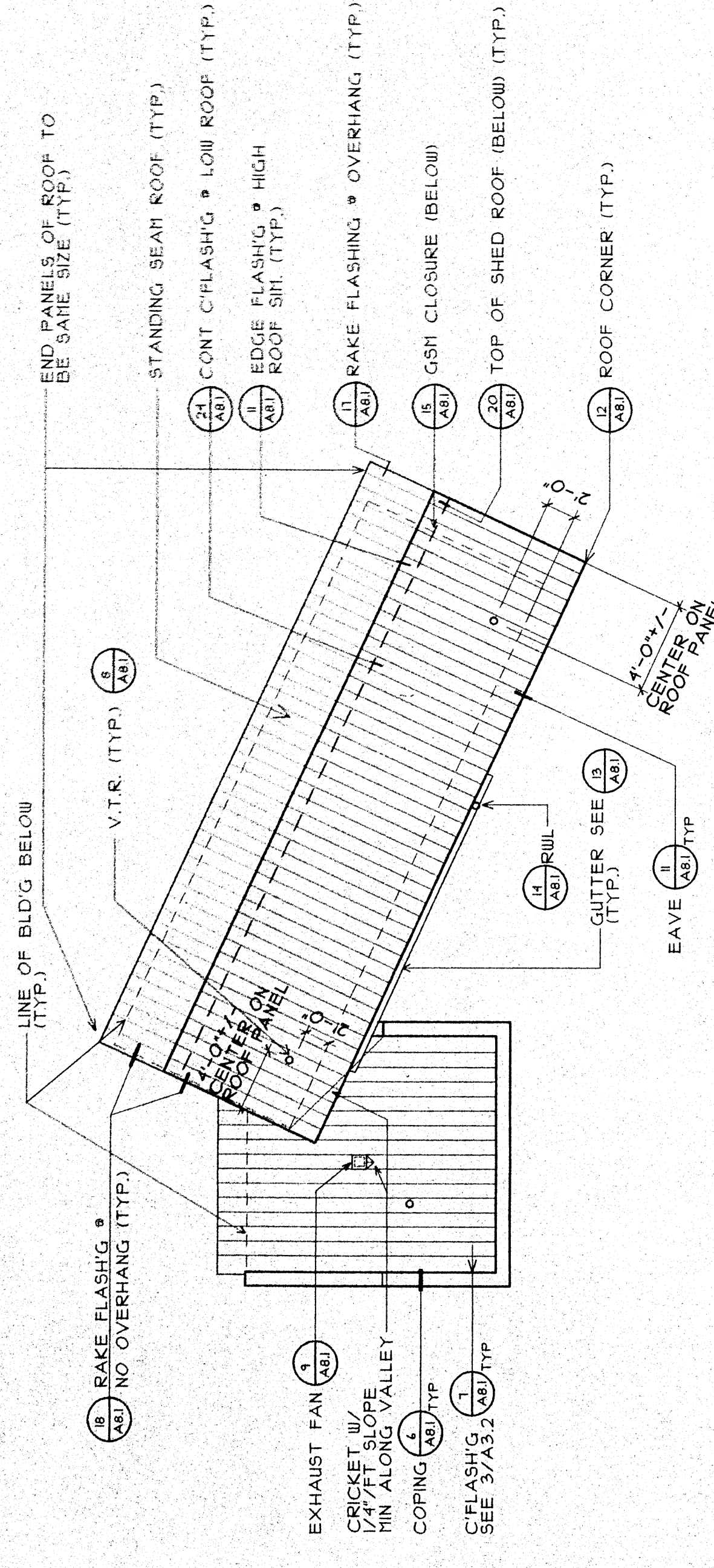


**PLAN NOTES**

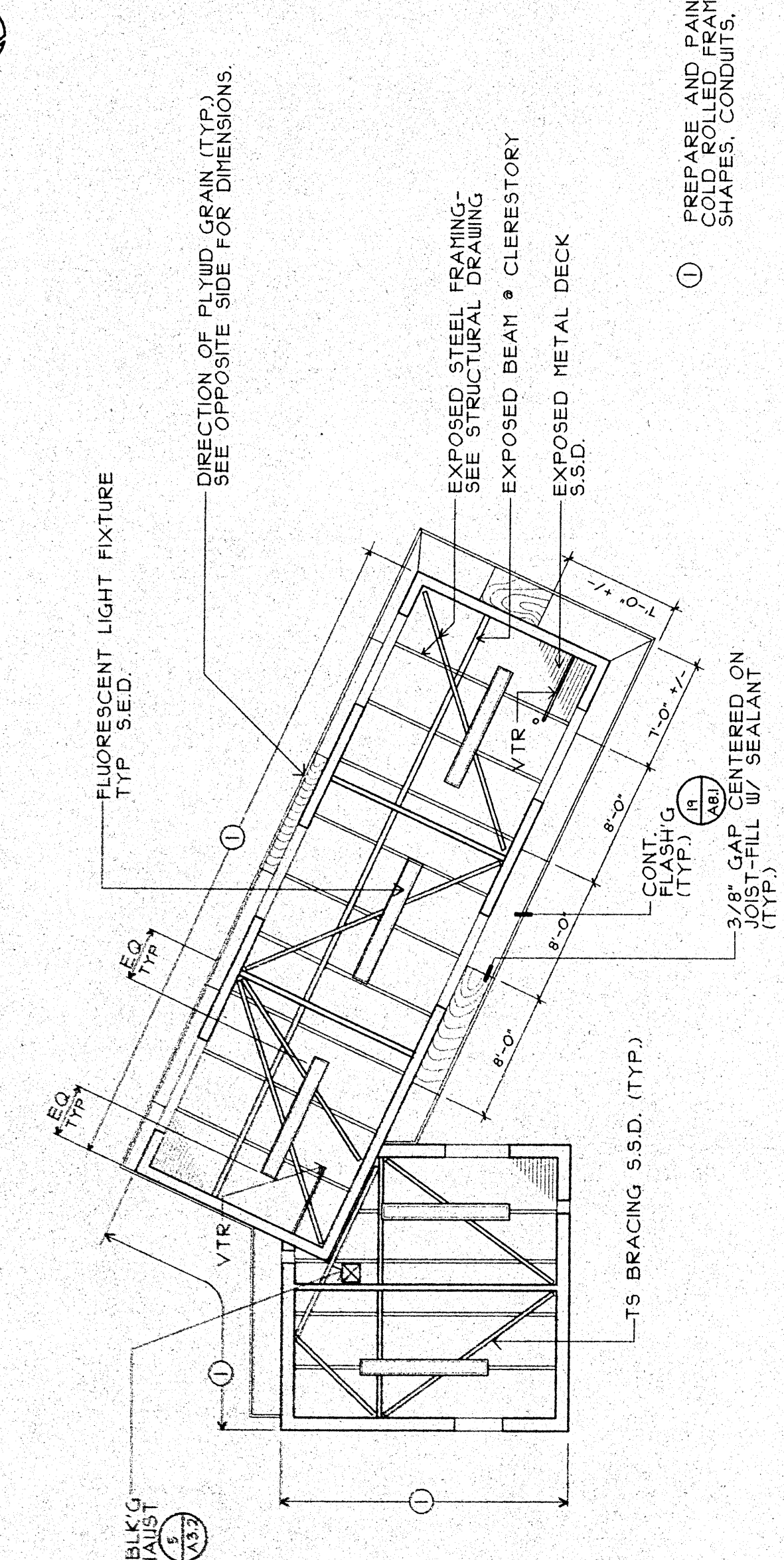
- 1 INSTALL OWNER-PROVIDED BOILER (TYP OF 2) SEE "SP" DRAWINGS FOR ADDITIONAL INFO.
- 2 RE-INSTALL (E) FILTERS - SEE "SP" DRAWINGS
- 3 FUTURE PUMP (N.I.C.)
- 4 FUTURE FILTERS (N.I.C.)
- 5 FUTURE BOILER (N.I.C.)
- 6 INSTALL FLOOR DRAIN SEE (A3)
- 7 INSTALL LAPEYRE 48 DEG. ALUMINUM STANDARD PARAPET STAIR WITH TOP TREAD LEVEL WITH FLOOR SURFACE. CENTER STAIR ON PUMP PIT.
- 8 INSTALL FRP GRATE OVER PIT - SEE DET. 30/A3.1
- 9 INSTALL RUII. PER DETAIL (A4)
- 10 INSTALL CONTINUOUS GUARD RAIL PER DET. (A7) (TYP)
- 11 OWNER PROVIDED AND INSTALLED CHLORINE GENERATION SYSTEM (N.I.C.)
- 12 INSTALL ELECTRICAL PANELS - S.E.D. FOR ADDITIONAL INFORMATION
- 13 INSTALL EXPANSION JOINT ALONG ALL BUILDING WALLS (TYP)
- 14 INSTALL CO. STORAGE RACK SEE DETAIL (A5)
- 15 COAT INSIDE OF BACKWASH AND PUMP PIT W/ 2 COATS XYPEX
- 16 INSTALL MOP SINK - SEE 3/A3.2
- 17 INSTALL 3 1/2" HIGH CONCRETE HOUSEKEEPING PAD
- 18 INSTALL OWNER-PROVIDED PUMP SEE "SP" DRAWINGS FOR ADDITIONAL INFO.
- 19 INSTALL OWNER-PROVIDED CHEMICAL CONTROLLER SEE "SP" DRAWINGS FOR ADDITIONAL INFO.



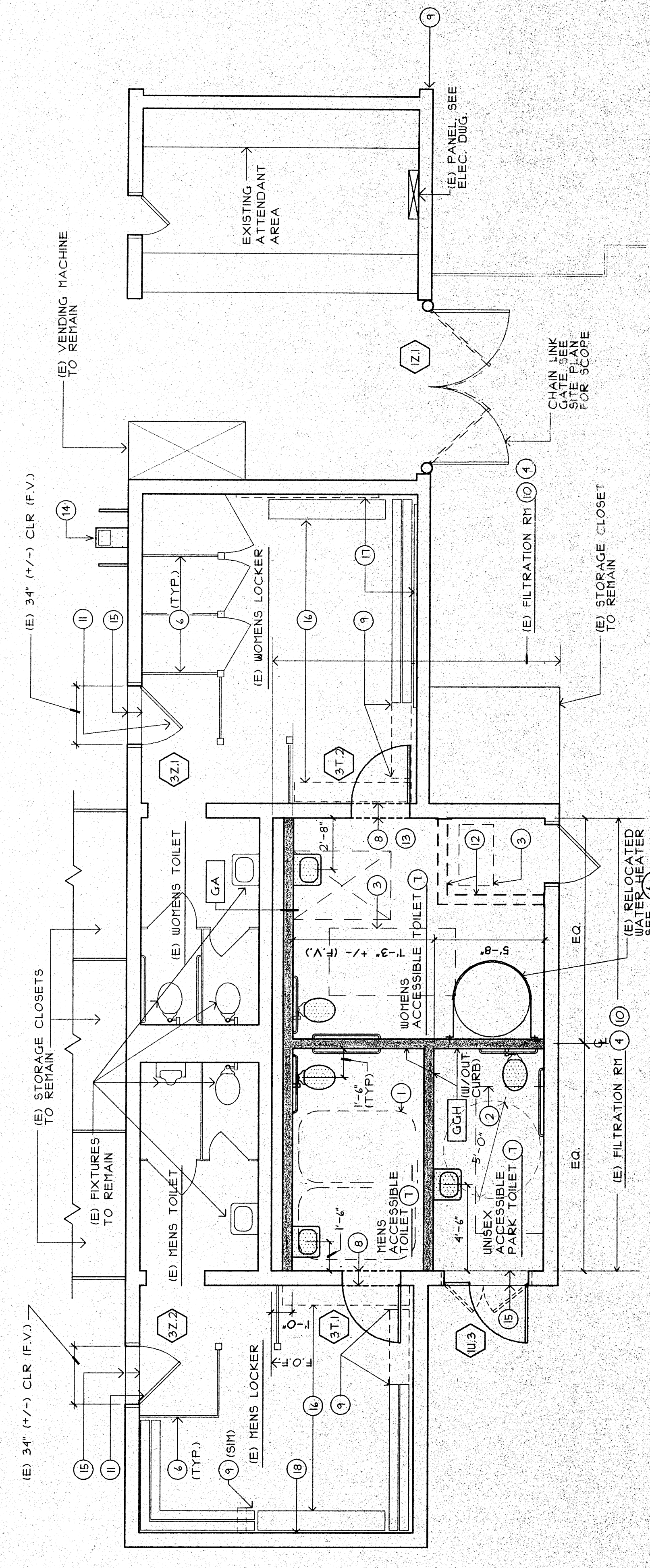
**1** FILTRATION BUILDING FLOOR PLAN  
SCALE: 1/4" = 1'-0"



**2** FILTRATION BUILDING ROOF PLAN  
SCALE: 1/8" = 1'-0"



**3** FILTRATION + STORAGE/CHLORINE BUILDING CEILING PLAN  
SCALE: 1/8" = 1'-0"



**5** BATHHOUSE FLOOR PLAN  
SCALE: 1/4" = 1'-0"

- 1 REMOVE EXISTING FILTRATION EQUIPMENT AND RE-INSTALL AT LOCATION SHOWN IN NEW FILTRATION ROOM. SEE "SP" DRAWINGS FOR ADDITIONAL INFORMATION (TYP. ALL REUSED EQUIP.)
- 2 REMOVE EXISTING BACKWASH STORAGE TANK
- 3 INFILL EXISTING PIPE CHASES PRIOR TO POURING NEW SLAB.
- 4 REMOVE EXISTING CONC. FLOOR SLAB. INSTALL FILTER MATERIAL AS SHOWN TO MATCH THE FINISHED F.L. ELEVATION FLUSH WITH THE ADJACENT LOCKER ROOMS (+RT/-) INSTALL NEW CONC. SLAB NOT USED
- 5 EXISTING PRIVACY SCREENS TO REMAIN.
- 6 INSTALL NEW ACCESSIBLE GRAB BARS AND METAL TOILET ACCESSORIES. SEE (A7) (ADDITIVE BID (C))
- 7 SAW-CUT A NEW OPENING IN THE EXISTING CHU WALL AND INSTALL 4" DIA. CHU. IN THE DOOR FRAME (SIP) - USE 3/8" X 4" POST. NOT ANCHORS IN LIEU OF MASONRY TEE ANCHORS (ADDITIVE BID (C))
- 8 SAW-CUT (E) BENCH SEAT TO ALLOW 5'-0" CLR. TO THE FACE OF THE NEW OPENING IN THE CHU WALL. REMOVE & REINSTALL THE (E) BLOCK BENCH
- 9 REMOVE ALL (E) MASONRY BRICKS, CONCRETE BLOCKERS, ELECTRICAL DISTRIBUTION PANELS, DISCONNECTS, SURFACES, ETC. PATCH AND REPAIR ALL FINISHES TO MATCH THE (E) ADJ.
- 10 INSTALL HARDWARE (E) DOOR. SEE DOOR SCHEDULE A51 (ADDITIVE BID (C))
- 11 REMOVE (E) CHU WALL, PATCH AND REPAIR ALL FINISHES TO MATCH THE (E) ADJACENT
- 12 REMOVE (E) BOILER
- 13 REMOVE (E) DRINKING FOUNTAIN & INSTALL (N) D.F. 1 PIPE RAIL C.T.E., C.U. WASTE. 1 VENT (OFFSET ROUGH AS RECD. SEE (A3) (ADDITIVE BID (C))
- 14 SAUCUT (E) REMOVE (E) SLOPED OR RAISED CONC. THRESHOLD TO ALLOW FOR 4" OF (N) CONC. TO FLUSH W/ (E) INTERIOR DOOR (ADDITIVE BID (C))
- 15 RELOCATE (E) ID. LOCKERS TO OPPOSITE WALL (ADDITIVE BID (C))
- 16 RELOCATE (E) WIPERS & BENCH TO ADJACENT WALL (ADDITIVE BID (C))
- 17 REMOVE TOWEL PEGS BEHIND RELOCATED LOCKER TO ALLOW LOCKERS TO BE FLAT AGAINST THE WALL

**PLAN NOTES**