



# MISSISSIPPI FORESTRY COMMISSION

3139 Highway 468 West • Pearl, MS 39209  
Phone: (601) 359-1386 • Fax: (601) 359-1349 • [www.mfc.ms.gov](http://www.mfc.ms.gov)

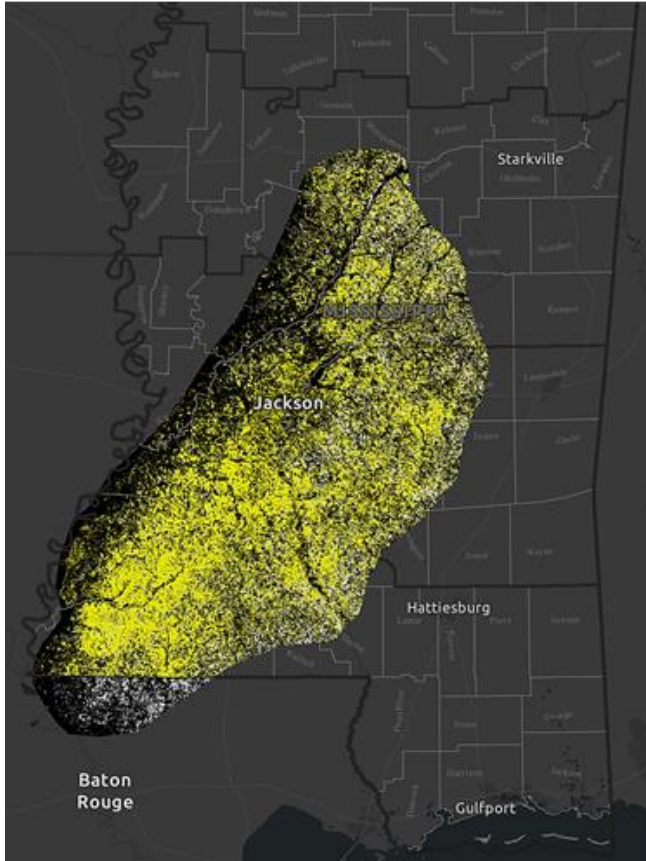
## 2024 PINE MORTALITY FACT SHEET

The following information is a preliminary report on the severity of observed pine mortality in MS as a result of the 2023 drought. Thanks to our federal partners, USDA Forest Service Southern Research Station, for providing this information. Please feel free to contact the MFC office at 601-359-1386 with any questions.

### Accuracy Assessment (By USDA Forest Service – Southern Research Station)

- Completed using 150 random points on polys sized 0.22 acres and greater, error 0.04%;
- Accuracy adjusted total pine mortality acres - 78,988.3
- at 159 trees per acre (3.5 pine trees per 10m grid cell) – over 12,500,000 dead trees

*Source: EFETAC response to R8 FHP request to assess and map the late-season 2023-24 beetle outbreak in MS 01/08/2023*



Pine Spots (Areas)	Number of Spots	Total Acreage	Average Acres Per Spot
Public BOE	31,042	3,168.33	0.1
Federal/Tribal	125,154	12,331	0.1
Private/Other Public	654,915	64,916	0.1
Total	811,111	80,415.33	0.1

Total acreage in this study area: 13,010,098 acres

Total acreage of pine included in this study: Approximately 2,500,000 acres

See the following link for the USDA Forest Service interactive map for the analysis area in Mississippi. Zoom in and out to get a better view of the pine mortality areas. <https://bit.ly/3Uu195I>

\*Source: USDA Forest Service