

# Neon Orange 1



## LEGO NAME & ID

Neon Orange 133

## BRICKLINK NAME & ID

## UUID

8CFA91BD-3813-4251-8F24-FD6410EDB4BC

## YEAR

1997 - 2001

## AVAILABILITY

Few

## COMMENT

Only used in Cyclone Master watch.

## COLOR DEFINITIONS

LAB	73	77	41	
sRGB	255	109	107	
CMYK	0	70	90	0
Pantone	805 C			

## SIMILAR COLORS

95

Vibrant Coral

10

Bright Reddish Orange

5

Medium Red

3

Fabuland Red

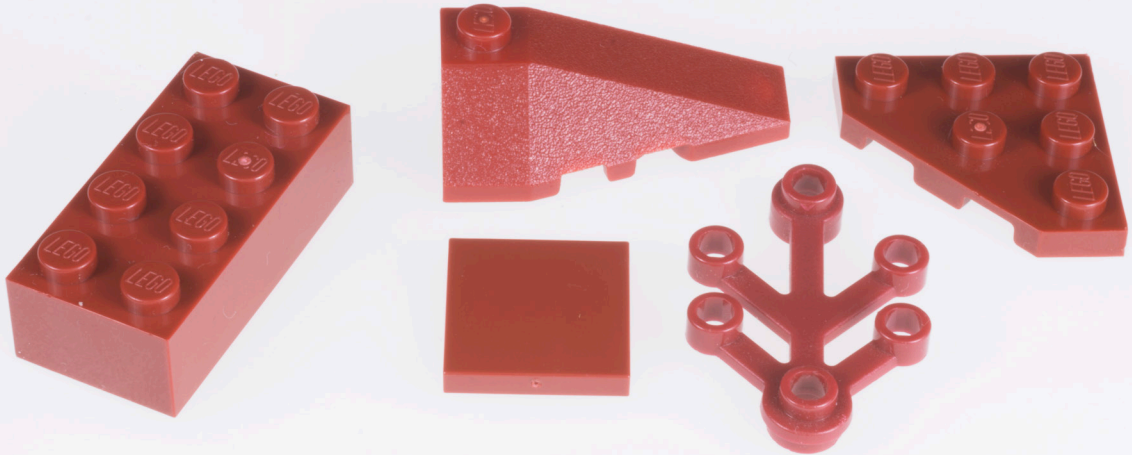
7

Bright Red

9

Red Orange

# 2 New Dark Red



## SIMILAR COLORS

Rust	6
Reddish Brown	13
Rust	12
Red Orange	9
Earth Orange	19
Brick Red	15

## LEGO NAME & ID

New Dark Red 154

## BRICKLINK NAME & ID

Dark Red 59

## UUID

06A6F972-99A1-429C-8DC7-8554DE6F9E56

## YEAR

2001 - current

## AVAILABILITY

Many

## COMMENT

In current color palette.

## COLOR DEFINITIONS

LAB	28	43	31	
sRGB	119	28	23	
CMYK	21	93	88	50
Pantone	181 C			

# Fabuland Red 3



## LEGO NAME & ID

## BRICKLINK NAME & ID

## UUID

FD02333A-E187-41D5-A851-B5EB0266E233

## YEAR

1979 - 1987

## AVAILABILITY

Rare

## COMMENT

Red of the hat and the arms of the figures.

## COLOR DEFINITIONS

LAB	42	62	50	
sRGB	180	36	22	
CMYK	2	97	85	7
Pantone	1797 C			

## SIMILAR COLORS

7

Bright Red

9

Red Orange

10

Bright Reddish Orange

6

Rust

23

Dark Orange

2

New Dark Red

# 4 Light Red



## SIMILAR COLORS

Rose	96
Light Nougat	20
Light Reddish Violet	93
Light Brick Yellow	31
Brick Yellow	32
Light Purple	88

## LEGO NAME & ID

Light Red 100

## BRICKLINK NAME & ID

Light Salmon 26

## UUID

648FDF75-697C-45E7-B138-08AE6C8CD306

## YEAR

1997 - 1999

## AVAILABILITY

Some

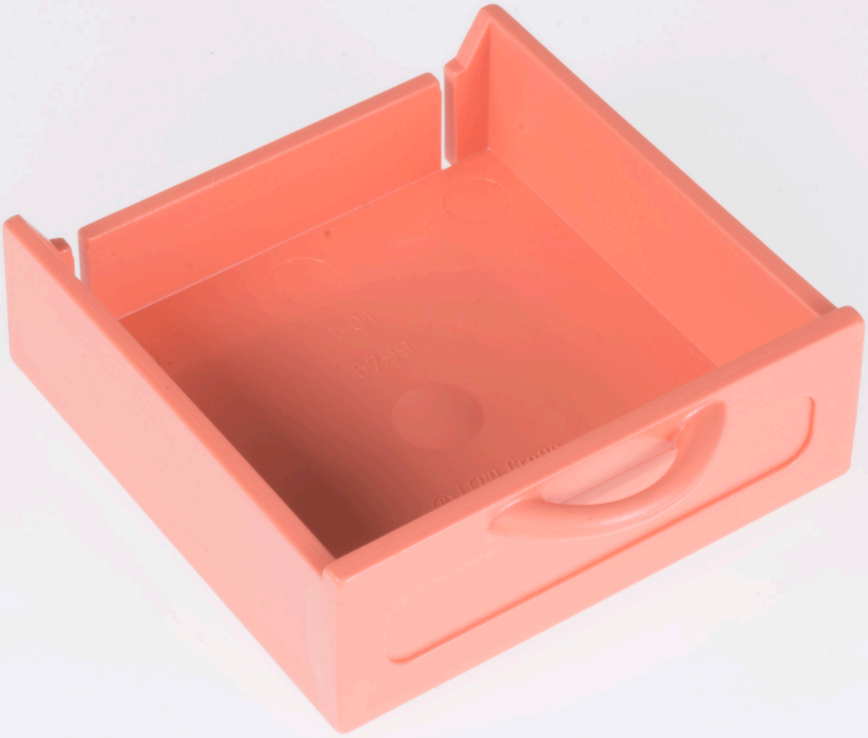
## COMMENT

Popular Scala color.

## COLOR DEFINITIONS

LAB	80	23	14	
sRGB	242	182	176	
CMYK	0	30	26	0
Pantone	169 C			

# Medium Red 5



## LEGO NAME & ID

Medium Red 101

## BRICKLINK NAME & ID

Salmon 25

## UUID

BA2E3889-45C4-4961-9900-09963843E7AE

## YEAR

1997 - 1999

## AVAILABILITY

Some

## COMMENT

A popular Scala color.

## COLOR DEFINITIONS

LAB	65	48	33	
sRGB	233	117	105	
CMYK	0	70	58	0
Pantone	178 C			

## SIMILAR COLORS

18

Nougat

9

Red Orange

10

Bright Reddish Orange

95

Vibrant Coral

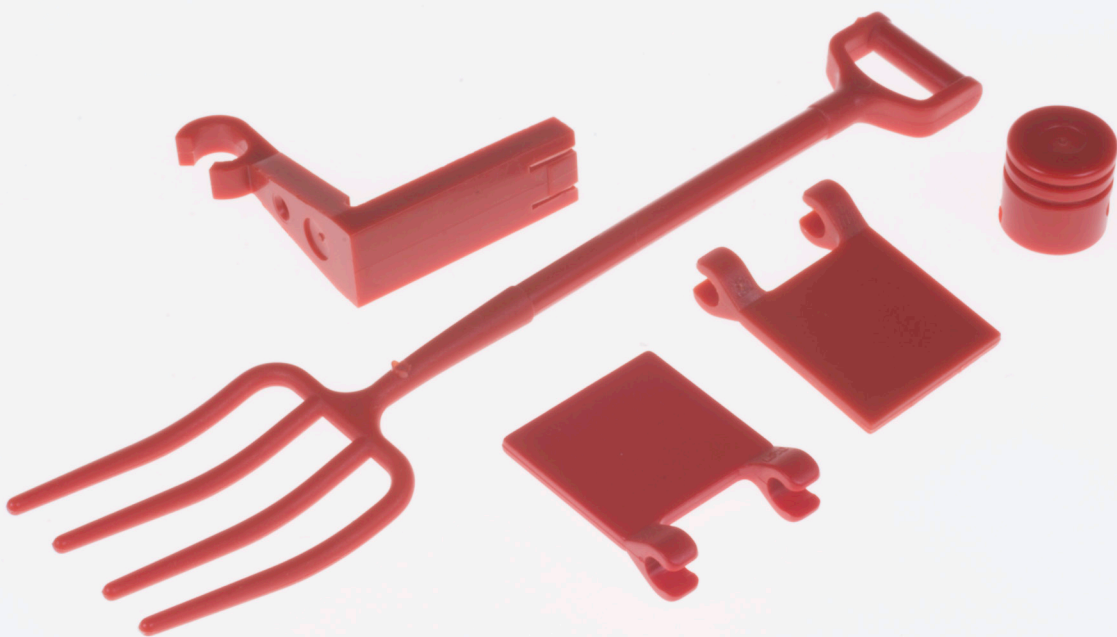
16

Dark Nougat

15

Brick Red

# 6 Rust



## SIMILAR COLORS

New Dark Red

2

Red Orange

9

Fabuland Red

3

Rust

12

Dark Orange

23

Brick Red

15

## LEGO NAME & ID

### BRICKLINK NAME & ID

Rust 27

### UUID

B571E539-0878-4763-ABDA-314266DF96AB

### YEAR

1977 - 1999

### AVAILABILITY

Few

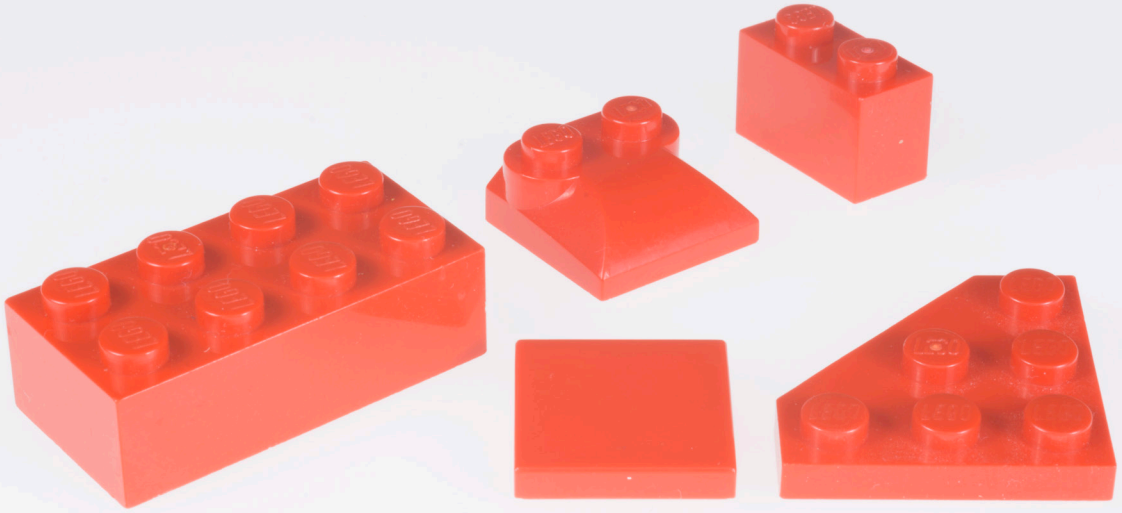
### COMMENT

One of the rust colors.

## COLOR DEFINITIONS

LAB	37	47	36	
sRGB	151	46	35	
CMYK	8	92	100	33
Pantone	484 C			

# Bright Red 7



## LEGO NAME & ID

Bright Red 21

## BRICKLINK NAME & ID

Red 5

## UUID

58E11C64-2642-4FAA-BBAE-B049E34E65BF

## YEAR

1950 - current

## AVAILABILITY

Many

## COMMENT

In current color palette

## COLOR DEFINITIONS

LAB	41	65	56	
sRGB	180	23	5	
CMYK	2	97	85	7
Pantone	1797 C			

## SIMILAR COLORS

3

Fabuland Red

10

Bright Reddish Orange

9

Red Orange

6

Rust

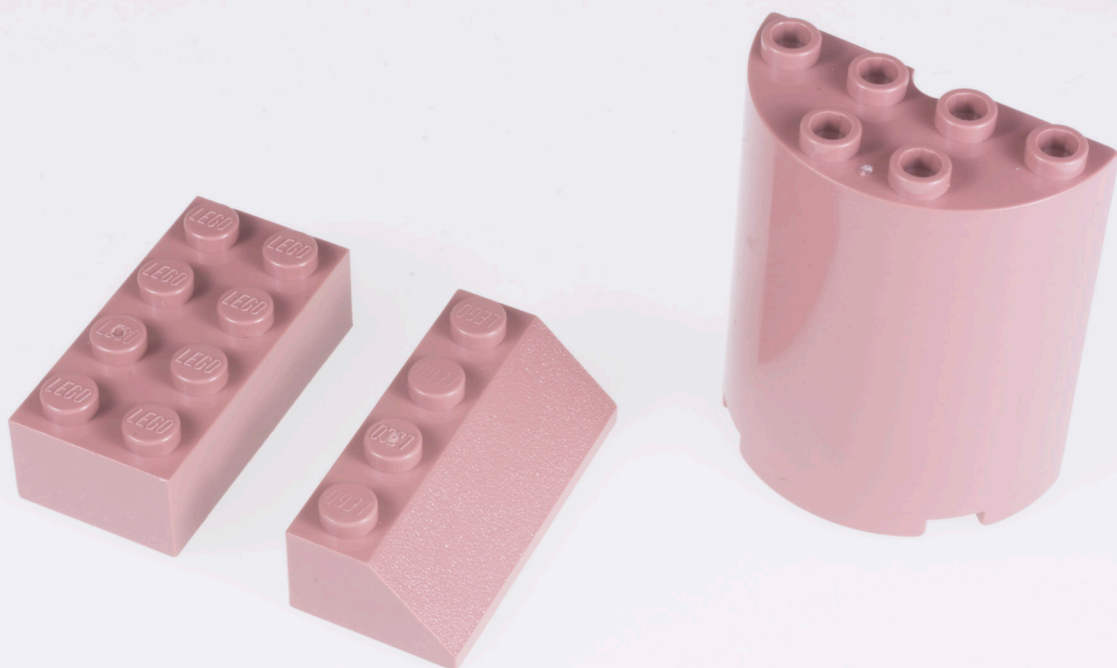
23

Dark Orange

21

Bright Orange

# 8 Sand Red



## SIMILAR COLORS

Pink

94

Sand Yellow

30

Brown

17

Sand Violet

85

Rust

12

Brick Red

15

## LEGO NAME & ID

Sand Red 153

## BRICKLINK NAME & ID

Sand Red 58

## UUID

A085EA77-7AE9-4E4A-BA26-708A7283286D

## YEAR

2001 - 2004

## AVAILABILITY

Several

## COMMENT

Only lasted for four years.

## COLOR DEFINITIONS

LAB	53	18	11	
sRGB	158	115	110	
CMYK	17	59	60	45
Pantone	4715 C			



# Red Orange 9



## LEGO NAME & ID

Red Orange 13

## BRICKLINK NAME & ID

## UUID

08481AB0-5375-4621-A9ED-6E01BF580BB6

## YEAR

1979 - unspecified

## AVAILABILITY

Few

## COMMENT

Another rust color used in only a few Fabuland parts.

## COLOR DEFINITIONS

LAB	48	48	43	
sRGB	185	72	48	
CMYK	3	91	86	12
Pantone	180 C			

## SIMILAR COLORS

6

Rust

3

Fabuland Red

10

Bright Reddish Orange

23

Dark Orange

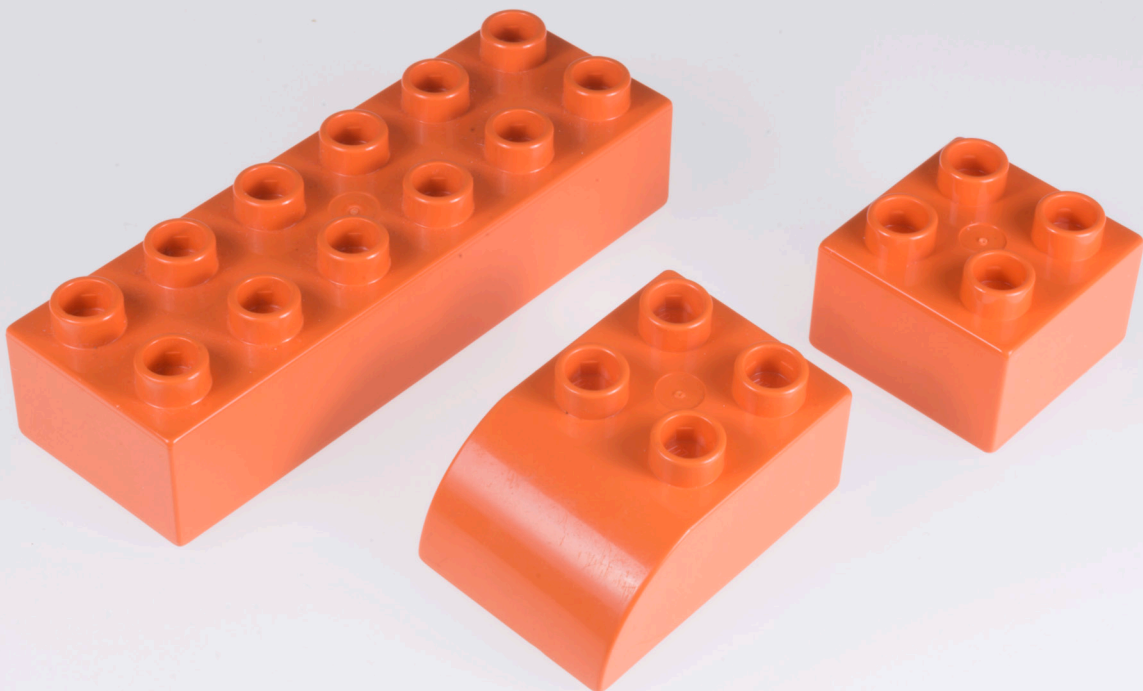
5

Medium Red

7

Bright Red

# 10 Bright Reddish Orange



## SIMILAR COLORS

Red Orange

9

Fabuland Red

3

Bright Red

7

Medium Red

5

Bright Orange

21

Dark Orange

23

## LEGO NAME & ID

Bright Reddish Orange 123

## BRICKLINK NAME & ID

## UUID

618C8401-96C3-4550-A05B-4A90CD3D7F82

## YEAR

2003 - 2004

## AVAILABILITY

Few

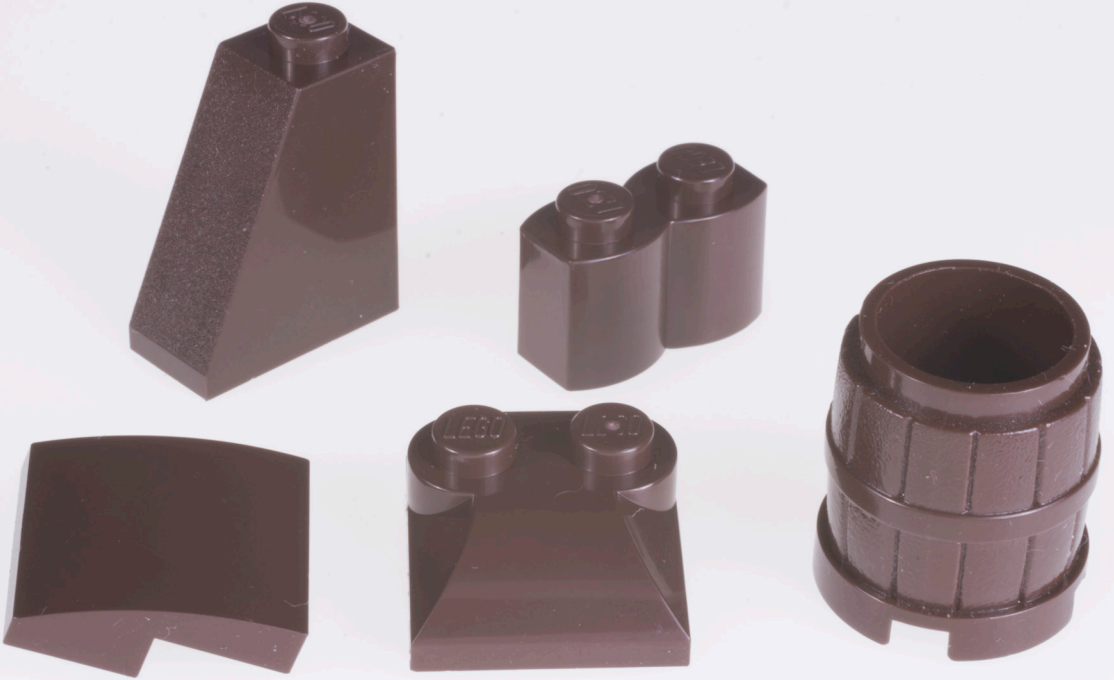
## COMMENT

Only appeared in one DUPLO set (3513).

## COLOR DEFINITIONS

LAB	59	56	54	
sRGB	227	90	52	
CMYK	0	73	87	0
Pantone	172 C			

# Dark Brown 11



## LEGO NAME & ID

Dark Brown 308

## BRICKLINK NAME & ID

Dark Brown 120

## UUID

CDD164EF-0837-4E37-B1FA-458222AD1CAA

## YEAR

2008 - current

## AVAILABILITY

Many

## COMMENT

In current color palette.

## COLOR DEFINITIONS

LAB	21	10	10	
sRGB	67	44	37	
CMYK	30	71	75	81
Pantone	476 C			

## SIMILAR COLORS

19

Earth Orange

13

Reddish Brown

104

Black

99

Dark Grey

17

Brown

87

Light Pink