



National
Research
Foundation

VISION 2030

NRF VISION 2030:
Research for a better society



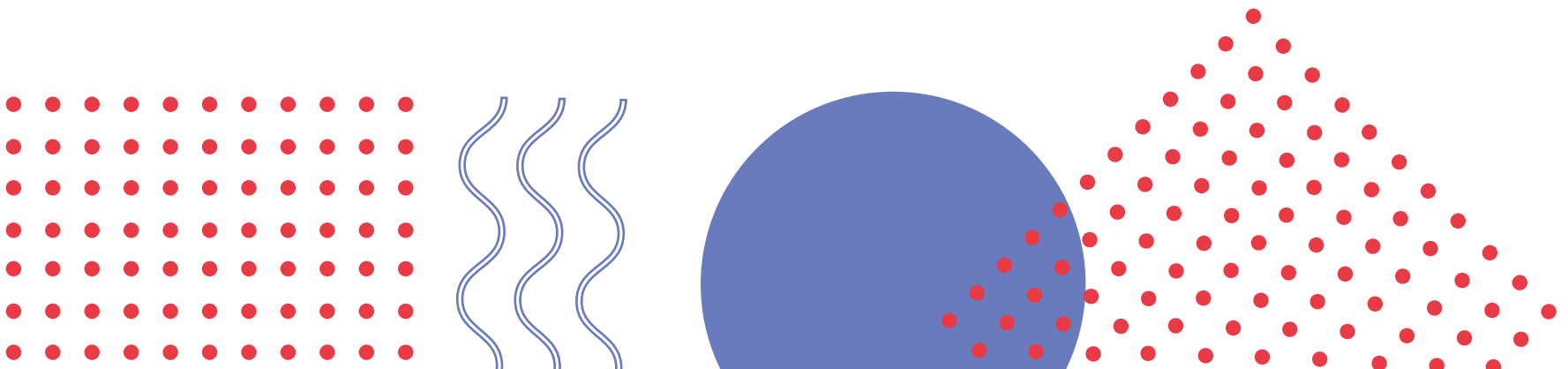
NRF VISION 2030: Reimagining the Future

It is in our nature as human beings, even as we occupy ourselves with the demands of day-to-day life, to cast our eyes to the horizon and wonder what the future holds in store.

In the realm of the sciences, curiosity and wonder are the points of origin for our journey towards knowledge, through science and research. The journey is where the process really begins, through the dedication and expertise of the individuals and teams who dare to breach the barriers of what we know and understand about our world and the way it works.

More than 20 years after our founding, and more than 25 years after the advent of democracy in South Africa, the National Research Foundation (NRF) has taken the time to reflect on the road ahead, and to reimagine our role and purpose in the next decade.

Here is our vision that puts science and research into service for a better society, and a better South Africa for us all.



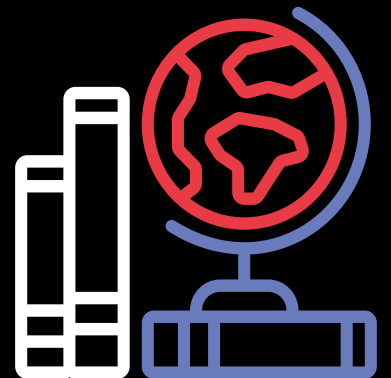
Let Knowledge Light the Way



At the NRF, knowledge is our gold. It is the precious commodity that we mine and refine, through our support and advancement of scientific enquiry.

Entrusted and empowered to transform knowledge into the working capital of a better society, we seek to become an even more transformed and agile organisation in the decade ahead.

The more we learn, the more we know, the more we understand, the more we can contribute to advancing society's ideals and aspirations. Knowledge belongs to all of us. Through our vision, through our work, we stand ready to let that knowledge light the way to 2030.





Our Vision

Research for a better society



Our Mission

To enable and facilitate the contribution of knowledge and scientific research to national development.



Our Values

■ **People-centred**

We believe in our people and in creating a working environment that is conducive to good health, well-being, and happiness.

■ **Respect**

We embrace diversity and treat people with dignity and respect.

■ **Accountability**

We are consistent, fair and transparent in our actions and decisions and are responsible for the public resources we spend.

We make commitments, stand for evaluation and accept that our actions have consequences.

■ **Ethics and integrity**

We act with honesty and decency.

■ **World-class service**

We provide exceptional service to society and our stakeholders.

■ **Passion for excellence**

We honour our obligation to society and the knowledge enterprise and deliver excellence and positive impact in all areas of our work.

Four Beacons of a Brighter Future

Our pathway to Vision 2030 is illuminated by four inseparable and inter-dependent guiding lights, shining the way to the future:



Transformation



Excellence



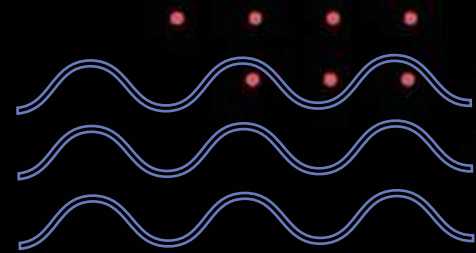
Impact



Sustainability



Transformation: The imperative for a better future



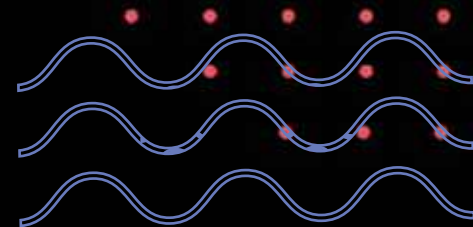
Our national transformation agenda calls for the urgency of transition from the legacies of apartheid, towards a new and inclusive democratic society.

Knowledge gained from scientific enquiry has a vital role to play in societal transformation, by encouraging critical discourse and developing responsible and critically engaged citizens. Scientific discovery and invention also advance a knowledge economy where the generation of new knowledge enhances and facilitates the development of society. This is a key part of our transformation agenda.

Over the next decade we will work harder to transform the equity profiles of the South African research workforce; the knowledge enterprise; and the relationship between science and society while building a diverse and fully inclusive learning organisation.



Impact: A better society through knowledge

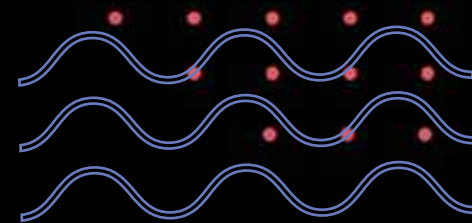


As an agent of change and an engineer of progress, the NRF aims to make a positive, meaningful, and lasting impact. We define impact in two ways: 'Knowledge impact' is the contribution that excellent research makes within academia. 'Research or societal impact' is the contribution that excellent research makes to society, the economy, and the environment.

The NRF will enable, facilitate and perform excellent research with direct and indirect impact, whether immediate or long-term, that extends the frontiers of knowledge and addresses national challenges.



Excellence: The foundation that sets the standard

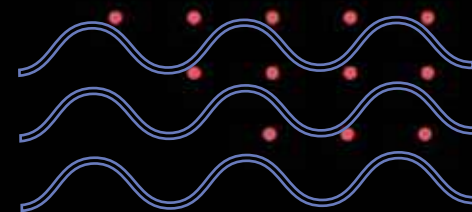


More than a benchmark, more than a goal, more than a distant destination, excellence is the foundation of rigour in scientific research. With this in mind, we use excellence as a principle to enhance the global competitiveness of the South African science system. We uphold excellence through investing in quality research, capable researchers and postgraduate students.

Excellence will continue to serve as one of our leading lights, defined by the criteria of scientific merit, ethics, originality, relevance, purpose, methodological rigour, and impact.



Sustainability: Building a better tomorrow today



Sustainability means meeting current needs without compromising the future. For us, this is about ensuring the sustainability of internal operations, the external knowledge enterprise, and the national and global environment.

Internally, the NRF will ensure financial and operational sustainability. Without a sustainable and well-resourced knowledge enterprise, the sector will not be able to grow and benefit society, the economy and the environment. As we strive to meet our needs today, so do we strive to sustain a brighter future for all.

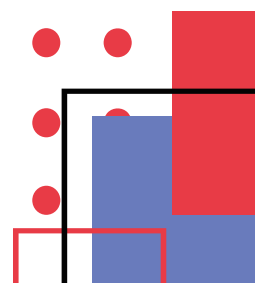
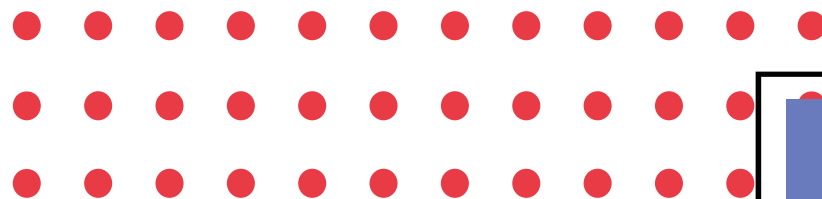
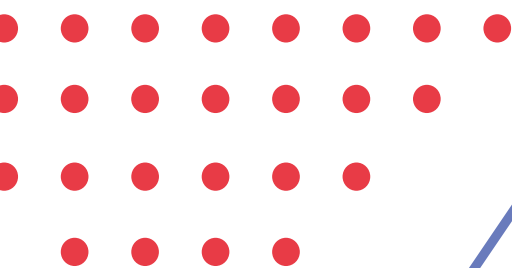


Six Pillars of the Knowledge Enterprise



Vision alone cannot build an organisation. These are the six pillars that will take us into the future, as our Vision leads us towards 2030 .

- People
- The research enterprise
- Research infrastructure
- The relationship between science and society
- The organisation we want to be
- Resourcing for impact



People: Our greatest asset

Just as science is designed to serve people, so must science itself be served by people who have the best interests of society and science at heart. A transformed and excellent knowledge workforce is critical to the success and sustainability of the knowledge enterprise.

The NRF's ambition over the next decade is to ensure an excellent, transformed, and sustainable South African cohort of researchers and technical expertise.

The research enterprise: Impacting society

For South Africa to thrive, knowledge creation and sharing must be at the heart of our efforts to transform and respond to the challenges facing our society.

We take responsibility for shaping the national research enterprise across all domains of science, and enabling knowledge generation that responds to areas of national priority or advantage.

We are also committed to the democratisation of knowledge for the benefit of society.

Research infrastructure: Enabling excellent science

Researchers need access to unique research equipment, infrastructure, capabilities, materials, locations, and information to conduct their research, whether in South Africa or through global partnerships. The NRF has a central role to play in ensuring that these needs are met.

The relationship between science and society: Building a better society

Imagine a society in which knowledge is created, used, challenged, valued and shared by all. The NRF's Vision 2030 seeks to turn that imagining into everyday reality, in the interest of addressing the needs and demands of all South Africans.

We see society participating in knowledge production by identifying challenges or policy needs, evaluating impact case studies, or gathering data for research projects.

The organisation we want to be

Our organisational strategy, however well crafted, cannot be delivered to true effect without employees who understand it, own it, believe in it, and are motivated and capacitated to deliver on it. A supportive organisational culture, that is appropriate for a premier science organisation, is essential.

To continue to operate efficiently and optimally and deliver excellent service, we will continue to refine our fit-for-purpose structure, business processes, and technology systems.

Resourcing for impact

To achieve our Vision for 2030, the NRF needs more than commitment, more than determination, more than a united effort by our knowledge workforce. The knowledge enterprise needs resources.

The NRF will continue to practice good governance and efficiency, report on and show accountability for the utilisation of resources, and demonstrate the societal and knowledge effect of its investments.



science & innovation

Department:
Science and Innovation
REPUBLIC OF SOUTH AFRICA



National
Research
Foundation



Physical Address

NRF Building
South Gate
CSIR Complex
Meiring Naudé Road
Brummeria
Pretoria
South Africa



Postal Address

Box 2600
Pretoria
0001
South Africa



info@nrf.ac.za



+27 (0)12 481 4000

Advancing Knowledge. Transforming Lives. Inspiring a Nation.