

Memo

To: Grant "Link" Smith, Western Lane District Forester

From: Ole Buch, Management Unit Forester

CC: Dave Lorenz, Southern Oregon Area Director
Brian Pew, Deputy Chief, State Forests Division

Date: June 30, 2014

Re: Information Item - Approved Annual Operations Plan for 2015

The 2015 State Forests Annual Operations Plan for the Western Lane District is attached for your review and approval. During my review of this plan, I have found that it is consistent with the *Northwest Oregon State Forests Management Plan*, the 2003 Western Lane District Implementation Plan, and the 2015 Annual Operations Planning Standards and Guidance memorandum.

This annual operations plan covers proposed forest management activities for fiscal year 2015.

During its preparation, this plan was reviewed by technical specialists from within the department and biologists from the Oregon Department of Fish and Wildlife and US FWS. Their comments were received verbally and in writing (written comments are on file in the district office). The draft annual operations plan also underwent a 45-day public comment period. No public comments were received specific to this Annual Operations Plan.

Approval of this plan does not constitute final approval of individual project details. Individual timber sales are subject to additional review processes at the district and program staff level before approval for auction. The operations described in this plan may be modified during the final preparation and/or implementation. Modifications to these operations will conform to the process included in the Annual Operations Planning policy.

The official copy of this Annual Operations Plan will be on file at the district office. Additional copies are available at the State Forests Division office in Salem.

The plan is also available on the ODF web site at:

http://www.oregon.gov/odf/pages/state_forests/annual_operations_plans.aspx

APPROVED:



Grant "Link" Smith, Western Lane District Forester

6/30/14

Date

**WESTERN LANE
DISTRICT
2015 ANNUAL
OPERATIONS PLAN**

TABLES OF CONTENTS

INTRODUCTION	4
INTEGRATED FOREST MANAGEMENT OPERATIONS	5
Timber Harvest Operations	5
Overview of Timber Harvest Operations.....	5
Minor Landscape Design Modifications	6
Summary of Timber Harvest Operations	7
Forest Roads Management	8
Overview	8
Road Construction	8
Road Improvement	9
Road Access Management	9
Road Maintenance	9
Land Surveying	10
Young Stand Management	10
Site Preparation	10
Planting	10
Vegetation Management	11
Tree Protection	11
Pre-commercial Thinning.....	11
Fertilization.....	11
Recreation Management.....	11
Overview of Recreation Management	11
Facilities (Campgrounds, View Points, Trail Heads, etc.)	12
Trails.....	12
Land Exchange.....	12

Other Integrated Forest Management Operations.....	12
Planning (and Information Systems).....	13
Stand Level Inventory and Other Vegetation Inventories	13
Fish and Wildlife Surveys.....	13
Other Planning Operations	14
Public Information and Education	14
Administration	15
Appendixes.....	16
A. Forest Land Management Classification Update	
B. Summary Tables.....	
C. AOP Maps.....	
D. Consultation with Other State Agencies.....	
E. Public Involvement.....	
F. Pre-Operations Reports.....	

WESTERN LANE DISTRICT

2015 ANNUAL OPERATIONS PLAN

INTRODUCTION

This operations plan covers all state-owned forest land managed by the Oregon Department of Forestry in Lane County.

The *NW Oregon State Forests Management Plan* calls for active forest management to produce a desired array of stand structure types across the landscape. In Lane County, long-range desired future condition targets are to eventually produce and maintain approximately 40 percent of the forest in complex layered and older forest structure stands that include large trees, a multi-layered canopy, diverse understory vegetation, snags, down wood, and other key habitat features.

The activities and projects described will be designed to achieve the goals, strategies, and objectives of the *NW Oregon State Forests Management Plan* and the *Western Lane District Implementation Plan*. This Annual Operations Plan is divided into five major categories: Integrated Forest Management, Planning Activities, Information Systems, Public Information and Education, Administration, and Appendices.

A 45-day public comment period occurred between March 17, 2014 and May, 2014. State Forests received several hundred comments that were generally supportive of the implementation of the High Value Conservation Areas in the Forest Land Management Classification System. There were no comments specific to any activities on Western Lane District. The State Forester approved the Forest Land Management Classification System on June 25, 2014; his approval memo and the final summary of acres can be found in Appendix A.

The management activities planned for FY 2015 are based on the range of objectives established in the *Western Lane District Implementation Plan* (Table 1), as well as the assumption that budget allotments will be similar to FY2014. The Western Lane District Implementation Plan, which was approved in 2003 and was intended to be in effect until June 30, 2011, will remain in effect until revisions to the plan are completed and approved by the State Forester. The extension of the 2003 Implementation Plan is documented in a February 15, 2011 memorandum from the State Forester.

Accomplishments of forest management activities described in previous AOP reports can be found in several documents including; the "Council of Forest Trust Land Counties Annual Report", the "Common School Forest Land Annual Report", and the "Western Lane District Annual Report" which includes accomplishments of the Fire Protection and Private Forest Divisions on the district. These reports are located on the internet at http://www.oregon.gov/odf/Pages/state_forests/state_forests.aspx#Annual_Reports, and <http://www.oregon.gov/odf/Pages/pubs/publications.aspx>

Harvest Levels: The district has included 6.5 MMBF of timber harvest in this Annual Operations Plan.

The timber sales listed will be auctioned any time between July 2014 and June 2015. Harvest may not be completed until 2017. The other activities listed in the AOP are planned to be accomplished between July 1, 2014 and June 30, 2015.

Table 1. Annual Operations Plan objectives compared to annual objectives identified in the Western Lane District Implementation Plan. All values are acres, except for Volume.

Silvicultural Activity	IP Annual Objective		2015 AOP Objective
	Low	High	
Partial Cut Harvest	0	500	0
Regeneration Harvest	0	280	266

INTEGRATED FOREST MANAGEMENT OPERATIONS

Timber Harvest Operations

Overview of Timber Harvest Operations

The following planned commercial forest management activities meet the requirements of the *Western Lane District Implementation Plan*.

This AOP has 100% regeneration harvest and 0% partial cuts. The harvest prescriptions are within the District Implementation Plan annual ranges for regeneration and partial cut.

Refer to Summary Table A - 1 for Timber Harvest Operations, Table A – 2 for Forest Resource Summary and A - 3 for the Forest Structure Summary for the 2014 AOP. Harvest type definitions for Table A-1 are located at [State Forests website](#)

All of the Primary and Alternate harvest operations and many of the other forest management activities have been review by ODF’s wildlife biologists, aquatic specialist, geotechnical engineers, road engineer, and operations coordinator, as well as fish and wildlife biologists from the Oregon Department of Fish and Wildlife. Information on operations that occur within the provincial circle of a northern spotted owl has been provided to the US Fish and Wildlife Service. Occasionally, operations may contain a resource or activity where review with another state agency, such as the Department of Agriculture or the Department of State Lands, is warranted. Written comments from the external resource specialists and the resolution of those comments can be found in Appendix D.

Be aware that only limited reconnaissance has been conducted on the proposed FY 2015 sales and that boundaries, volumes, and prescriptions may be modified as field work progresses. Plus, winter storms may cause blowdown that will need to be salvaged in lieu of preparing some of the operations listed.

Structural habitat components such as green trees, snags and down woody debris (DWD) are described in Chapter 4 of the NW FMP and may be considered for all harvest prescriptions; however, the emphasis will be placed on regeneration harvest.

The green tree retention target for regeneration harvest units is five trees per acre. Green tree arrangements for this AOP include; scattered individual trees, clumps of trees, and trees concentrated in and adjacent to riparian management areas.

The FMP strategy for hard snags is to manage for at least two per acre on average across the landscape. The need for snag creation for regeneration sales is evaluated on a sale by sale basis.

The FMP strategy for Down Woody Debris is to retain an average of 600 to 900 cubic feet of hard conifer logs (class 1 & 2) per acre during regeneration harvest.

Opportunities for natural recruitment of snags and DWD is created by laminated root rot disease (*Phellinus weirii*). In severe cases of root rot, we attempt to retard the spread of the disease by cutting out the infected trees. In other cases we do not cut out the infected trees. This allows the disease to spread at a rate of approximately one foot per year, slowly adding snags and DWD to the stand. Whether laminated root rot is treated or untreated, we know from experience that additional trees will be infected by the disease, creating snags and eventually DWD.

Within a given annual operations plan, snags and DWD may be retained at higher levels in some units and at lower levels in other units, with the intent of achieving the landscape targets outlined in the Forest Management Plan strategies. Post harvest DWD results can be attributed to natural recruitment from green tree retention, residual logging slash, and tree topping.

In order to protect water quality during active operations, a variety of methods will be used to prevent sediment from entering live streams. These methods include (but are not limited to) maintaining culverts and other road drainage structures, using sediment control devices in road ditches when necessary, and seasonal restrictions on logging and hauling operations. Culvert installment and replacement in live streams will be conducted between July 1 and Aug. 31. Operations outside of this period will be reviewed with ODFW. Riparian management areas result in leave trees adjacent to the stream which protect stream temperature, provide nutrients, protect stream banks, and eventually provide wood to improve fish habitat.

Minor Landscape Design Modifications

This AOP proposes the following minor modification to the landscape design:

Table 2. Minor Landscape Design Modifications

Operation/Unit	Modification	Acres Added	Acres Removed
Tilden Top	Change acres from DFC Layered to DFC General	7	7
Total Change		7	7

Summary of Timber Harvest Operations

Please note that the Western Lane district is considered one basin.

Table 2. Summary of Timber Harvest Operations. All values are in net acres.

District	2014 AOP	
	Partial Cut	Regeneration
Western Lane (all land managed by the Western Lane district is considered one basin)	0	269

- Green 10:** One unit totaling 88 net acres of modified clearcut in 70 year old and Douglas-fir and western hemlock. Six trees per acre will be retained to provide future snags, downed wood, and structure. Trees will be left in green tree retention areas, riparian areas and scattered in the unit. Two rocked spurs will be built for a total of 1.1 miles of new construction to access the sale area. Entire sale is designated as desired future condition 'General'.
- Tilden Top:** Three units totaling 131 net acres of modified clearcut and 7 acres of group selection in 64 year old mixed conifer and hardwood stands. In areas 1 and 2, six trees per acre will be retained to provide future snags and structure. Majority of leave trees will be left in, or adjacent to, the riparian areas and there will be some scattered trees left in the unit. In Area 3, no leave trees will be left within the group selection. The purpose of the group selection in Area 3 is to open up helicopter access to an existing fire pond. The re-establishment of this fire pond will greatly improve our fire suppression efforts. One spur about 0.04 miles will be constructed and 3.5 miles of road will be improved to access the sale area. All areas are in locations designated as desired future condition 'General'.
- Speed Walker:** One unit totaling 41 net acres of modified clearcut in 76 year old conifer stand. Six trees per acre will be retained to provide future snags and structure. Majority of leave trees will be left in, or adjacent to, the riparian areas and in a green tree retention area. 0.2 miles rocked spur will be constructed and 0.2 miles of existing road will be improved to access the sale area. The new construction will connect the Walker Point road system with the Tilden Ridge road system. Connecting these road systems will create a more efficient transportation network. All areas are in locations designated as desired future condition 'General'.
- Skinny Bear (Alternate Sale):** Four units totaling 124 net acres. Two of the four units (24 acres) are proposed modified clearcuts located in 79 year old timber. The other two units (100 acres) are moderate thinnings located in 42 year old timber. In the modified clearcut units, six trees per acre will be retained to provide for future snags and structure. Said trees will be left scattered across the unit and/or left in green tree retention areas. In the moderate thinning, trees will be thinned from below with an objective to capture mortality and increase future stand growth. Approximately 0.1 miles of road will constructed and 1.7 miles of road will be improved to access the sale area.

- Barber North (Alternate Sale): One unit totaling 31 net acres of modified clearcut in 71 year old mixed conifer and hardwood stand. Six trees per acre will be retained to provide future snags, downed wood, and structure. Trees will be left in retention areas, in the riparian areas, and scattered in the unit. About 0.4 miles of rocked spur will be constructed to better access the sale area. Entire sale is designated as desired future condition 'General'.
- Good Barber (Alternate Sale): One unit totaling 74 net acres of modified clearcut in 76 year old mixed conifer and hardwood stand. Six trees per acre will be retained to provide future snags, downed wood, and structure. Trees will be left in the riparian areas and scattered in the unit. About 0.1 miles of rocked spur will be constructed and 0.4 miles of road will be improved to better access the sale area. Entire sale is designated as desired future condition 'General'.
- Aha Pataha (Alternate Sale): One unit totaling 79 net acres of modified clearcut in 76 year old Douglas-fir. Six trees per acre will be retained to provide future snags, downed wood, and structure. Trees will be left in green tree areas, riparian areas and scattered in the unit. About 0.5 miles of rocked spur will be constructed and 0.8 miles improved to better access the sale area. In addition, an approximate 50 year old culvert located in Cattle Creek will be removed. The removal of this legacy culvert will potentially increase fish passage opportunities for species such as Coho salmon, steelhead and cutthroat trout. The entire sale is designated as desired future condition 'General'.
- GM Thin (Alternate Sale): One unit totaling 146 net acres of a moderate thinning in 43 year old Douglas-fir. Thinning will be "from below" where the objective is to capture mortality and improve future stand growth. Approximately 0.4 miles of road will be constructed and 0.3 miles will be improved to better access the sale area.

Forest Roads Management

Overview

The *Forest Roads Manual 2000* describes the vision, guiding principles and practices for road construction and maintenance on ODF managed forest land. This AOP describes five categories of road management activities: Construction, improvement, closure/vacation, maintenance, and rock pit development.

Western Lane roads are designed and used to conduct forest management activities. The public should exercise care when driving these roads for other purposes.

Refer to Summary Table A – 4 for the Forest Roads Summary for the 2015 AOP.

Road Construction

Only limited reconnaissance has been conducted on the proposed FY 2015 sales. Locations and costs may change as field work progresses.

Approximately 1.34 miles of road will be constructed. These spurs will be located primarily on ridge tops in stable locations away from streams.

- Tilden Top: 0.04 miles for 1 rocked spur
- Green 10: 1.1 miles for 2 rocked spurs
- Speed Walker: 0.2 miles for 1 rocked spur

Road Improvement

This AOP proposed to improve approximately 6.4 miles of road. Improvement activities will consist mostly of re-surfacing and drainage improvement. All of these roads are rocked.

- Tilden Top: 3.5 miles for 1 rocked spur
- Green 10: 2.7 miles for 1 rocked spur
- Speed Walker: 0.2 miles for 1 rocked spur

Road Access Management

Rocked roads are not normally vacated since we want to keep these roads open for forest management purposes, fire protection, and public recreation. Most ODF-controlled roads are ridgetop with little potential for sediment to enter streams.

ODF possesses permanent easements on the access routes for the Tilden Top and Speed Walker operations. Some permanent easements may require separate License Agreements that identify maintenance responsibilities and their associated costs.

The proposed access to the Green Light operation is controlled by private landowners and BLM. A temporary road use agreement will be required for hauling over the roads owned by these private landowners. A license agreement will be required for portions of access road located on BLM.

ODF controlled roads are usually kept open for public use. However, we retain the option of gating if vandalism, neighbor concerns, or excessive road damage from public use becomes a problem in particular areas.

Road Maintenance

Roads will be maintained as necessary to protect water quality and the road system asset value. Road maintenance is accomplished by timber sale purchasers, through R/W agreements, and by contracting road maintenance. In addition, small amounts of roadside herbicide applications are done by District personnel or private contractors. The District does not own heavy equipment such as graders, dozers, or backhoes.

On roads not being actively used for timber hauling, the District practices a low level of maintenance by maintaining drainage and keeping encroaching vegetation in check. This keeps roads open in order to conduct forest management activities and maintains access for

fire protection. No attempt is made to maintain smooth running surfaces. In some instances, rather than incurring the expense of continuously pulling ditches, drive-thru waterbars are combined with outsloping to minimize surface erosion caused by water running down wheel tracks caused by public use.

During periodic road inspections and in the course of normal forestry work we look for areas with potential sidecast failures. If found, fixing these areas will be done as part of timber sale contracts or more immediately as separate road maintenance contracts, depending upon the recommendation of the Area geotechnical engineer.

Land Surveying

Approximately 1.5 miles of surveys are anticipated during this planning cycle. Said property lines are for proposed operations identified in this AOP.

Young Stand Management

Refer to Summary Table A – 5 to review the Reforestation and Young Stand Management Summary for the 2015 AOP.

Site Preparation

Site preparation is the activity to create planting spots and/or reduce brush cover to allow planted seedlings and natural seedlings to become established. Site preparation may include slash burning, slash and brush piling, or herbicide treatment. Vine maple, bigleaf maple, salal, and salmonberry are the primary competing species in most areas. Each completed unit will be evaluated for site preparation needs. At this time we are proposing the following site preparation activities:

Approximately 416 acres may be ground sprayed. These acres are located in the Another Nelson, East Salt, Green Light, Gall, Penn Tie and Fish Ridge timber sales. Slash burning or piling may also occur in areas where feasible.

Planting

Tree planting operations are conducted for various reasons. These include meeting Forest Practices Laws, quickly establishing a new stand of trees after timber harvesting, and increasing species diversity in the area and across the landscape. All clearcut units are planted with a mix of conifer with Douglas-fir the primary species. Approximately 415 trees per acre will be planted. About 416 acres of initial planting is anticipated.

Interplanting is used to raise stocking in young plantations that are below acceptable levels, to a minimum of 300 trees per acre. Surveys are conducted one and two years after initial planting to determine interplanting needs. Where necessary, interplanting is done the following winter. During the spring and fall of 2014 surveys will be conducted to determine

interplanting needs for the 2015 planting season. 98 acres are currently planned, but it is likely that we will conduct interplant operations based on stocking survey results.

Vegetation Management

In some cases, a few years after plantation establishment, competing vegetation threatens the survival of planted seedlings. Competing vegetation is usually salmonberry and vine maple. Excess red alder and/or bigleaf maple may also need to be controlled.

About 156 acres of modified clearcuts in western Lane County may be release sprayed in order to reduce the amount of competition between the existing brush and the seedlings.

Tree Protection

Planted conifer is sometimes clipped off by mountain beavers. In other areas deer or elk may bite off the tips. Occasionally the District may encase seedlings in plastic mesh tubes for protection. The district has not trapped mountain beavers, but may consider doing so in heavily populated areas.

No tree protection or trapping is planned. However, examination this summer may show that seedling protection is necessary in some areas.

Pre-commercial Thinning

The district is not planning to precommercially thin (PCT) this fiscal year. There may be limited opportunities for PCT operations if funding became available through increased revenue or grant funds. A detailed review of PCT candidates will take place if funding becomes available. It is estimated that even if there was adequate funding, the Western Lane District would PCT less than 100 acres.

Fertilization

No fertilization activities are planned for this AOP.

Recreation Management

Overview of Recreation Management

ODF-managed land in Lane County is scattered and not adjacent to areas of high recreational interest. However, State land has a low level of hunting and backroad driving. Our timber sale activities increase forage for big game and grouse, and our road building improves recreational access.

Facilities (Campgrounds, View Points, Trail Heads, etc.)

No recreation facilities exist on ODF managed land in Lane County.

Trails

No recognized trails exist on ODF managed land in Lane County.

Land Exchange

There are no land exchanges planned at this time. In addition, there are no known Department of State Lands (aka Common School Land) parcel sales or desertification of lands managed in the Western Lane District. It should be known though, that DSL land sales are decisions made by DSL, not ODF and said parcel sales may occur within the planning timeline of this AOP. Therefore, a DSL parcel sale may occur within FY 2015 without being identified in this AOP.

At this time the district does not have an approved land exchange plan. District personnel may commence the preparation of a land exchange plan should time allow.

Other Integrated Forest Management Operations

District Firewood Cutting Program

Purpose:

The primary objective of the District Firewood Cutting Program is to provide a source of firewood from State Forests to the public for personal use and secondarily to reduce fuel hazards, protect crop trees, improve visibility along roads, and provide a recreational opportunity. The District's Firewood Cutting Program is tied to the completion of timber sales. Timber sale contracts require any non-merchantable wood or cull material that has been yarded to the landing and is suitable for firewood to be placed in a pile. Purchasers of BOF lands timber sales are using more of the branches and materials left after trees are harvested, so opportunities for personal firewood cutting may be limited. In addition, many of the completed timber sales are located in areas that do not have public access, which also reduces firewood availability.

State Forests are managed for multiple benefits, and snags, downed wood and stumps are important habitat components under our Forest Management Plan. Any individual gathering firewood on State Forests land should follow the permit instructions, consult the permit maps and personnel at their local ODF office to ensure they remain on State Forests land. Property lines are frequently unmarked and any permission obtained from ODF to gather firewood is only valid on State Forests land. Harvesting firewood without the landowner's permission is trespass.

Firewood is a high-risk vector for wood-boring insects, such as emerald ash borer and Asian longhorned beetle, two species responsible for widespread defoliation of forests in Midwest and Eastern states. The Oregon Invasive Weed Council and ODF encourage people to

obtain their firewood in a place as close as possible to the place where it will be burned. Recreationists have a role in protecting the forests by not moving firewood great distances.

The district rules for firewood cutting and the process for obtaining firewood cutting permits is described below.

When:

The public will be notified of firewood cutting permits by posting notices at the district office, in the field and/or at nearby public areas such as bulletin boards at local markets. Notices may also be posted on the district's external website (<http://www.oregon.gov/ODF/westernlane/>). Permits will only be issued during the months outside the fire season. Fire season is generally from July 1st through October 15th. The availability and duration of each permit will be determined by the State Forest Unit Forester on a case by case basis. Items considered may include, but are not limited to: access, quantity of firewood, management goals, resource and infrastructure protection, and workload management.

Who:

A limited number of personal firewood cutting permits will be issued to the public, on a first come-first served basis. The permit is valid for two chords and shall not be transferred to another party and shall not be used to sell firewood to another party. Oregon Department of Forestry does not guarantee the quality or availability of wood when issuing firewood cutting permits. Exceptions to the two cord limit may be made for non-profit organizations, with prior district authorization.

Where:

Designated firewood cutting areas will be marked on the permit map, which excludes active and sold timber sales, recreation sites, and planned operations. There is no guarantee that units or travel routes will be posted in the field.

How:

Enforcement of firewood cutting permits will be accomplished by law enforcement officers and following the Firewood Cutting Guidance described in 12.2.G1.2.2. Additional firewood cutting permit requirements and guidelines may be provided with the permit.

Planning (and Information Systems)

Below are the significant district-level planning projects currently scheduled for FY 2015.

Stand Level Inventory and Other Vegetation Inventories

Stand level inventory (SLI) efforts may take place on the district during the 2015 fiscal year. These efforts may be accomplished using the combined efforts of contracts administered by Salem staff and in-house work conducted by district personnel.

Fish and Wildlife Surveys

Western Lane District has a very active spotted owl and marbled murrelet survey program.

We typically survey 5 to 10 current and potential sale areas each year for spotted owls under ODF contracts or in cooperation with federal agencies. In addition, Northern Spotted Owl activity centers that affect State land are monitored.

Marbled murrelet surveys are conducted annually on about 5 potential sale areas.

The District will conduct physical surveys for unknown streams. Forest Practices data and personal knowledge are also used for sale planning.

Table 3. Summary of Surveys for Threatened and Endangered Species

Operation	Species ¹ (NSO/MM)	Survey Years ²	BA ³ Required	Special Considerations
Barber North	NSO	12 & 14	No	
Barber North	MM	12 & 13	No	
Good Barber	NSO	12 & 14	No	
Good Barber	MM	12 & 13	No	
Aha Pataha	NSO	11 - 14	No	
Aha Pataha	MM	11 & 12	No	
Green 10	NSO	10 - 13	Yes	
Green 10	MM	10 & 11	No	
Tilden Top	NSO	10 - 14	Yes	
Tilden Top	MM	10 & 11	No	
Speed Walker	NSO	13 - 14	Yes	
Skinny Bear	NSO	12 - 14	No	
Skinny Bear	MM	12 & 13	No	
GM Thin	NSO	13 - 14	No	
GM Thin	MM	13 & 14	No	

¹ Surveys are conducted according to accepted protocols when habitat for the specific species is determined to be present. NSO – northern spotted owl, MM – marbled murrelet.

² Years that surveys have been completed or are planned.

³ A Biologic Assessment is required for this operation due to the presence of NSO or MM in the vicinity of the operation.

Other Planning Operations

Preparing the 2016 Annual Operations Report. Preparation efforts include reconnoitering operations, developing pre-operation reports, and preparing T&E surveys.

The district may commence the preparation of a land exchange plan. The development of a land exchange plan will be determined by the availability of staff.

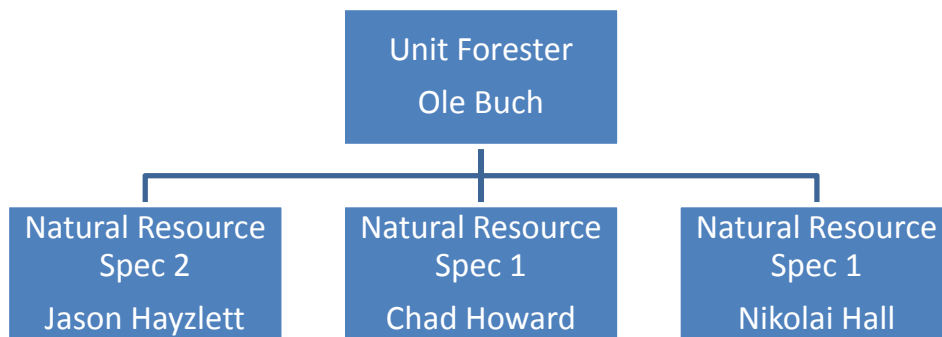
Public Information and Education

Public information and involvement will include public review and comments on the 2015 AOP. In addition, informal public review and comment on all district State Forests management activities on an ongoing basis is expected and welcomed.

Administration

There are currently four full time foresters (State Forests Unit Manager, Natural Resources Specialist 2, and two Natural Resource Specialist 1's) in the Western Lane District State Forests program. The NRS 2 also acts as the computer systems and GIS specialist for all District programs. The four foresters perform all the tasks normally handled by engineering, marketing, reforestation/young stand management, GIS, T&E, and planning specialists in the larger districts.

The State Forests budget partially funds the District Forester, Office Manager and Receptionist/Dispatcher. Since there is no Assistant District Forester, the State Forests Unit Manager is responsible for the State Forests portion of that position.



APPENDIXES

A. Forest Land Management Classification Update

B. Summary Tables

C. AOP Maps

D. Consultation with Other State Agencies

E. Public Involvement

F. Pre-Operations Reports

Pre-operations reports available upon request.



Oregon

John A. Kitzhaber, MD, Governor

Department of Forestry

State Forester's Office
2600 State Street
Salem, OR 97310-1336
503-945-7200
FAX 503-945-7212
www.oregon.gov/ODF



"STEWARDSHIP IN FORESTRY"

To: Liz Dent, State Forest Division Chief
From: Doug Decker, State Forester
Date: June 25, 2014

Subject: Implementation of the Revised Forest Land Management Classification Rule on State Forests

This memo addresses approval of the implementation of the revised Forest Land Management Classification System (FLMCS) rule, including the new High Value Conservation Areas and Special Use classifications, on State Forest lands managed by the following districts: Astoria, Coos, Forest Grove, North Cascade, Southwest Oregon, Tillamook, West Oregon, and Western Lane.

On June 5, 2013, the Oregon Board of Forestry adopted a revision to the FLMCS rule (OAR 629-035-0055) that added the classifications of High Value Conservation Area and Special Use while removing the Special Stewardship Classification. The purpose of this rule revision was to increase the visibility of the important conservation strategies that were already occurring on State Forests.

It was clear that implementation of this rule revision would result in a major change to the FLMCS maps/data and would be required to be available for public comment for 30-days (OAR 629-035-0060). Upon approval of the rule revision, the districts were directed to begin the task of updating the FLMCS data with the goal of having draft maps available for a public comment process that would occur concurrently with the normal 45-day public comment period for the Annual Operations Plans.


The public comment period occurred between March 17 and May 2, 2014 and included three open houses that focused on the implementation of the revised FLMCS rules, especially the location and purpose of High Value Conservation Areas. The open house were held early in the public comment period at the Forest Grove, Astoria, and Tillamook district offices. In response to the public comment period, the Division received:

- Eight letters/emails
- Approximately 1,700 form letter type emails
- Fifteen comments generated through an on-line survey

Almost all of the comments were generally supportive of the implementation of the FLMCS. Many of the comments included a request that the Department improve the durability of the High Value Conservation Areas; this issue is currently being addressed through the Alternative Forest Management Plan Project.

Several individuals indicated that old growth should be classified as High Value Conservation Areas. After reviewing the management strategies for old growth in the Northwest Oregon, Southwest Oregon, and Elliott State Forest Management Plans, I have found that old growth stands (as defined in those plans) qualifies for classification as High Value Conservation Areas under the Unique, Threatened, or Endangered Plants subclass. I have directed the districts to include existing old growth stands as High Value Conservation Areas in their final FLMCS designations.

After reviewing the draft FLMC maps/data, the public input, the recommendations from the District Foresters and Area Directors, and consistent with OAR 629-035-0060 (2), I am approving the revised FLMCS for Astoria, Coos, Forest Grove, North Cascade, Southwest Oregon, Tillamook, West Oregon, and Western Lane Districts.



Doug Decker
State Forester

6.25.14

Date

Appendix A

Changes to Forest Land Management Classification

The Forest Land Management Classification (FLMC) is a method of describing the management emphasis of parcels of state forest land. The management emphasis identifies the extent to which a parcel of land can be managed for a variety of forest resources. It also identifies when a particular forest resource may need a more focused approach in its management, or possibly an exclusive priority in its management.

The framework of the FLMC places all state forest land within one of four land management classifications. The classifications are: 1 - General Stewardship, 2 – Focused Stewardship, 3 – Special Stewardship, and 4 – High Value Conservation Area. Subclasses are assigned for the specific forest resources that require a Focused Stewardship, Special Use, or High Value Conservation Area Classification.

This Appendix is an update to the Western Lane District FLMC. The updates meet the definition of a major modification. A major modification is defined as one that cumulatively exceeds 500 acres within one year. Major modifications require a 30 day public comment period which will be held in conjunction with the District’s 2015 AOP comment period. At the close of the public comment period, the Department will consider the public comments and make final decisions on the proposed changes. The District Forester will forward the draft final changes along with any public comments to the Southern Oregon Area Director and the State Forester for review and final approval.

The Western Lane District FLMC has not been updated since the original approval date of March 2003. Since that time, the Board of Forestry approved changes to the FLMC Administrative Rule that renamed the Special Stewardship classification to Special Use Area as well as added a new classification called High Value Conservation Area. This FLMC update incorporates these new classifications and provides updated acres for each classification and subclass listed in the tables below.

Tables 2 and 3, originating in the District Implementation Plan have been updated to reflect these changes.

Table 2. Western Lane District Acres, by Stewardship Class and Fund*

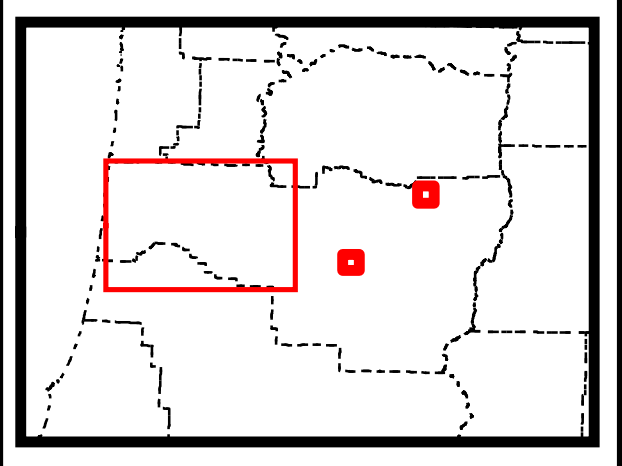
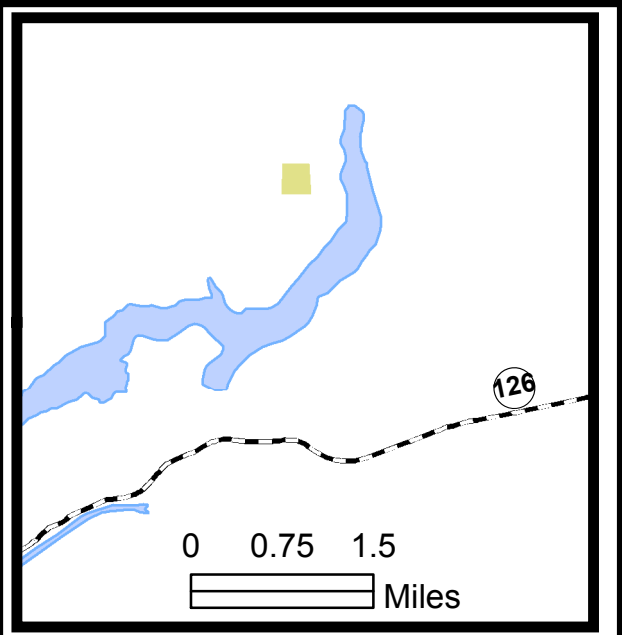
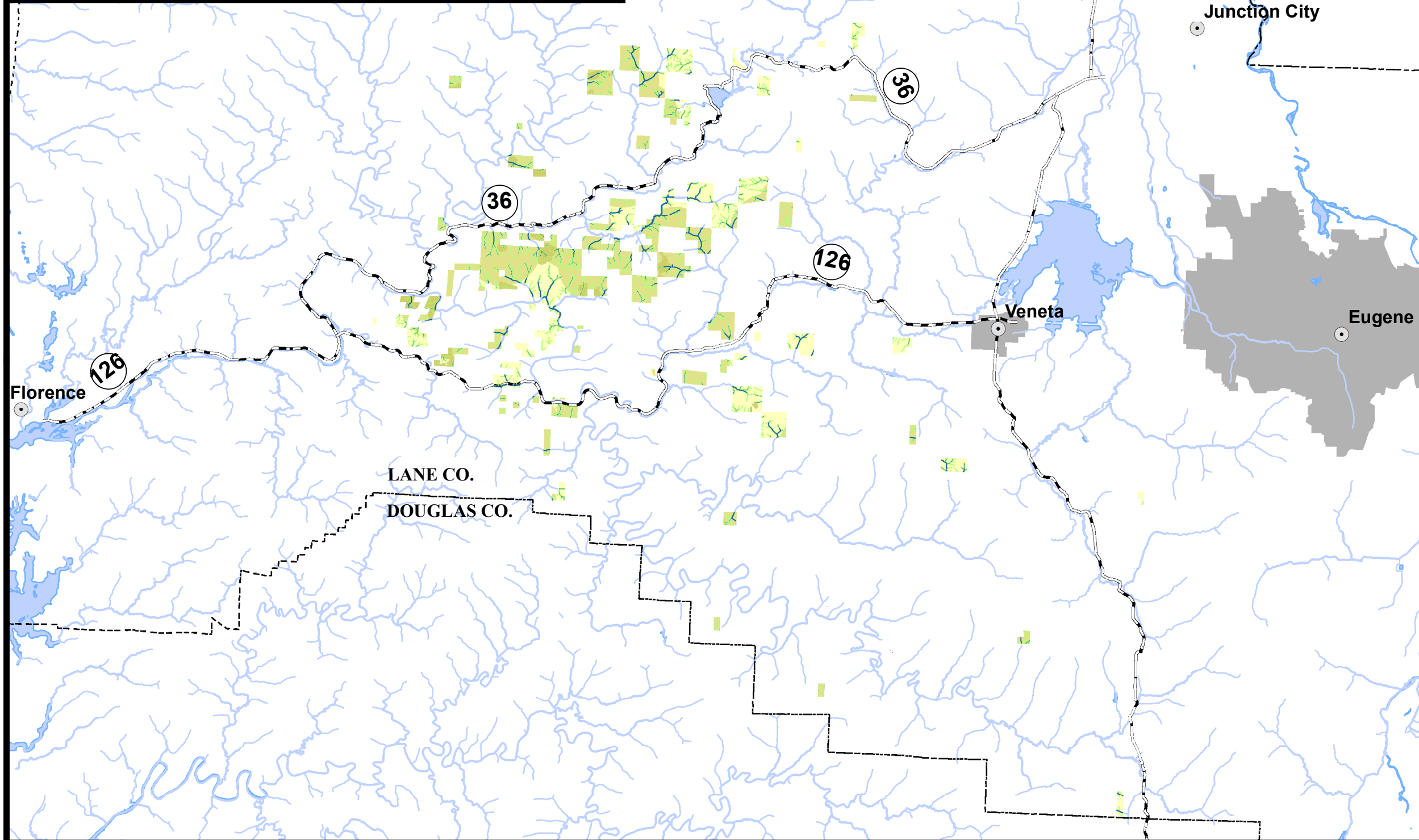
Classification	BOF	CSL	Total Acres
Focused Stewardship	19740	483	20223
Special Use	398	3	401
High Value Conservation Area	3081	31	3112
General Stewardship	7549	526	8075

Table 3. Forest Land Management Classifications for
Western Lane District – Focused and Special Subclasses (Acres)

	Focused Stewardship	Special Use	High Value Conservation Area
Administrative Sites	0	4	0
Agriculture, Grazing	0	0	0
Aquatic & Riparian	4961	0	1318
Cultural Resource	0	0	0
Domestic Water Use	4	0	0
Energy & Minerals	2	0	0
Operationally Limited	0	305	0
Plants	0	0	0
Recreation	0	0	0
Research/Monitoring	10	0	0
Transmission	0	54	0
Visual	108	39	0
Wildlife Habitat	15140	0	1794

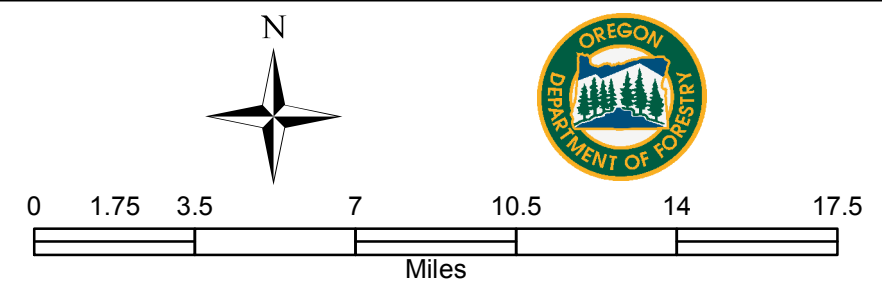
*Acres in Table 2 and Table 3 include overlapping classifications.

Western Lane District Biological Subclasses



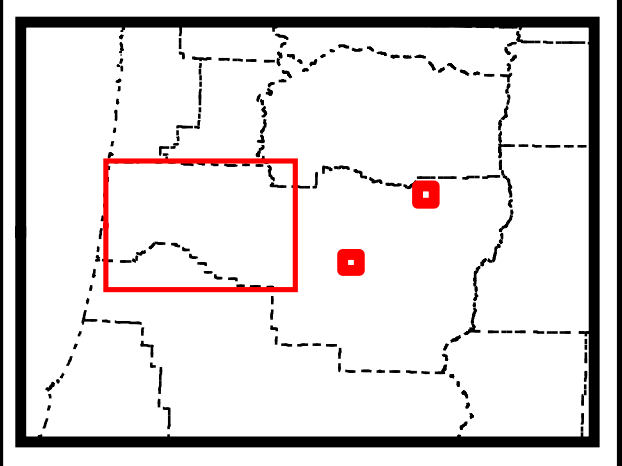
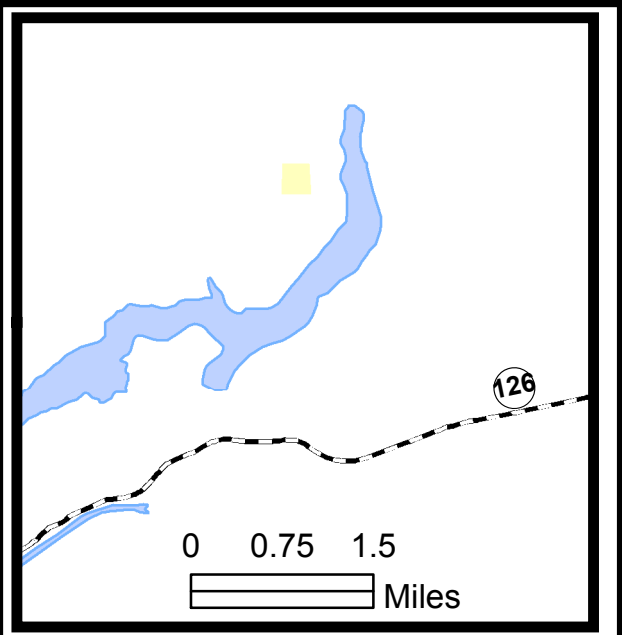
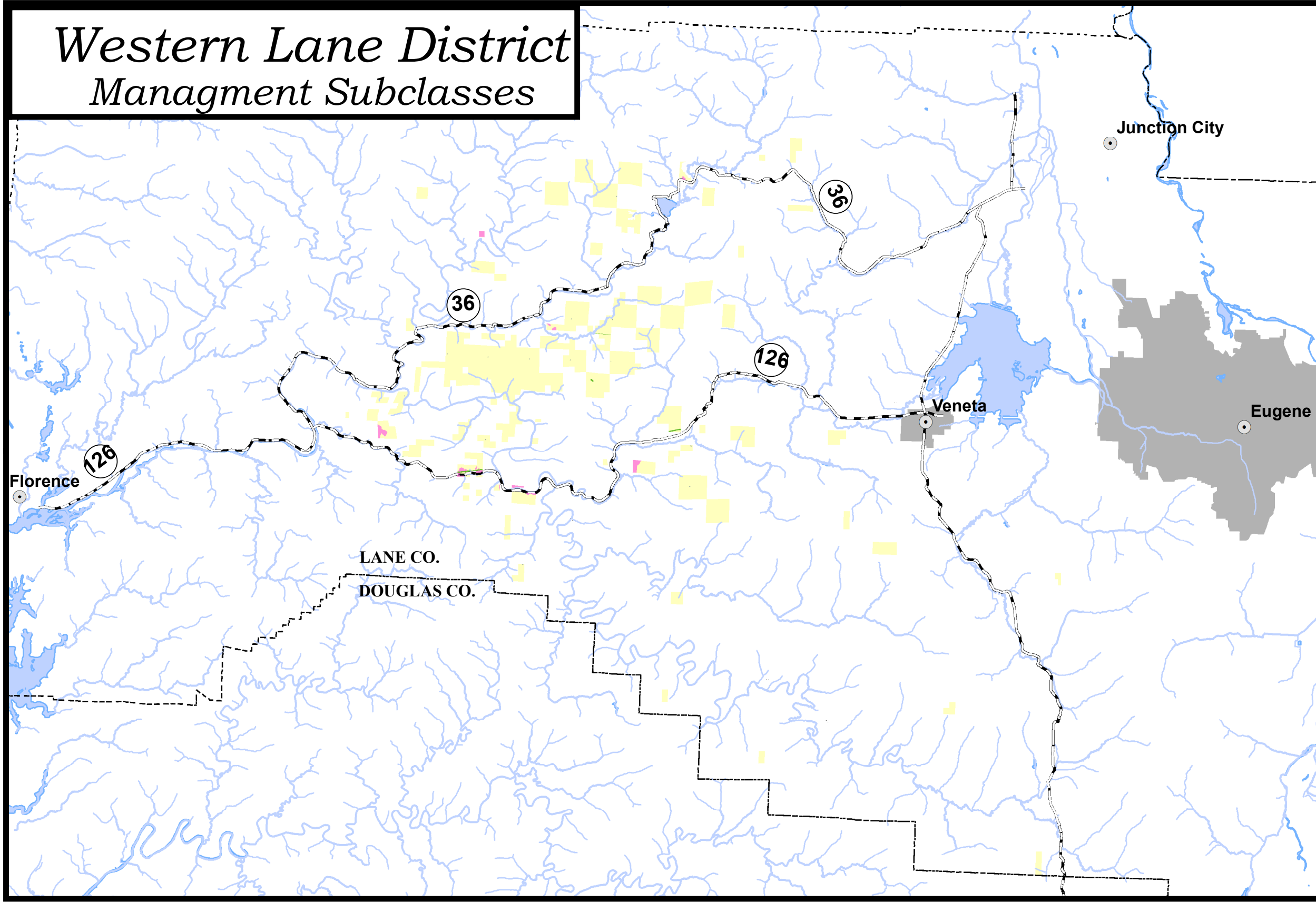
- | | | |
|------------------------------|--|------------------------------|
| Focused SUBCLAS | High Value Conservation Areas SUBCLAS | Focused SUBCLAS |
| Plants | Aquatic and Riparian Habitat | Plants |
| Aquatic and Riparian Habitat | Wildlife Habitat | Aquatic and Riparian Habitat |
| | | Wildlife Habitat |

- | | | |
|-------|-----------------|-----------------------|
| Towns | Roads | Managed Lands by Type |
| | Streams, Large | |
| | Streams, Medium | |

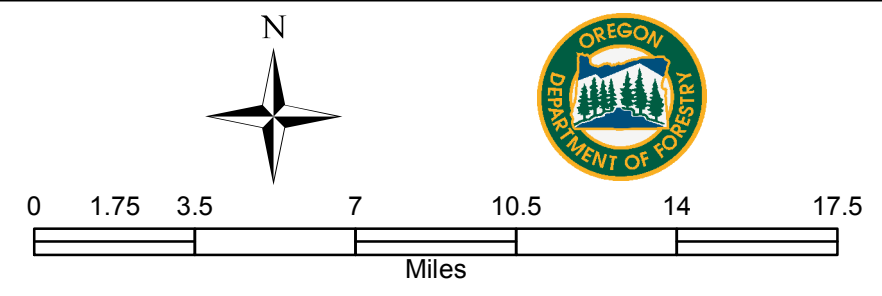


This product is for informational purposes, and may not be suitable for legal, engineering or surveying purposes. This information or data is provided with the understanding that conclusions drawn from such information are the responsibility of the user.
OB 3/14/2014

Western Lane District Management Subclasses

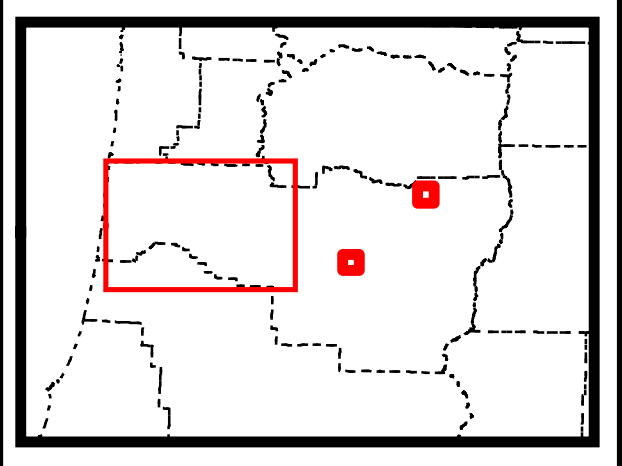
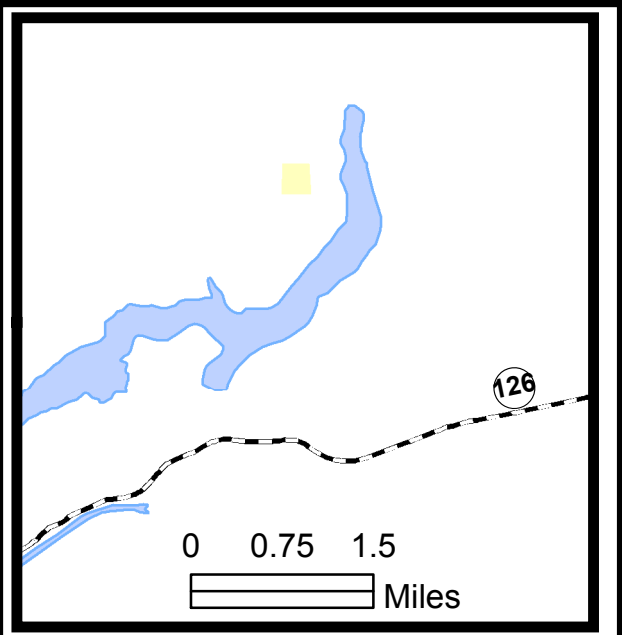
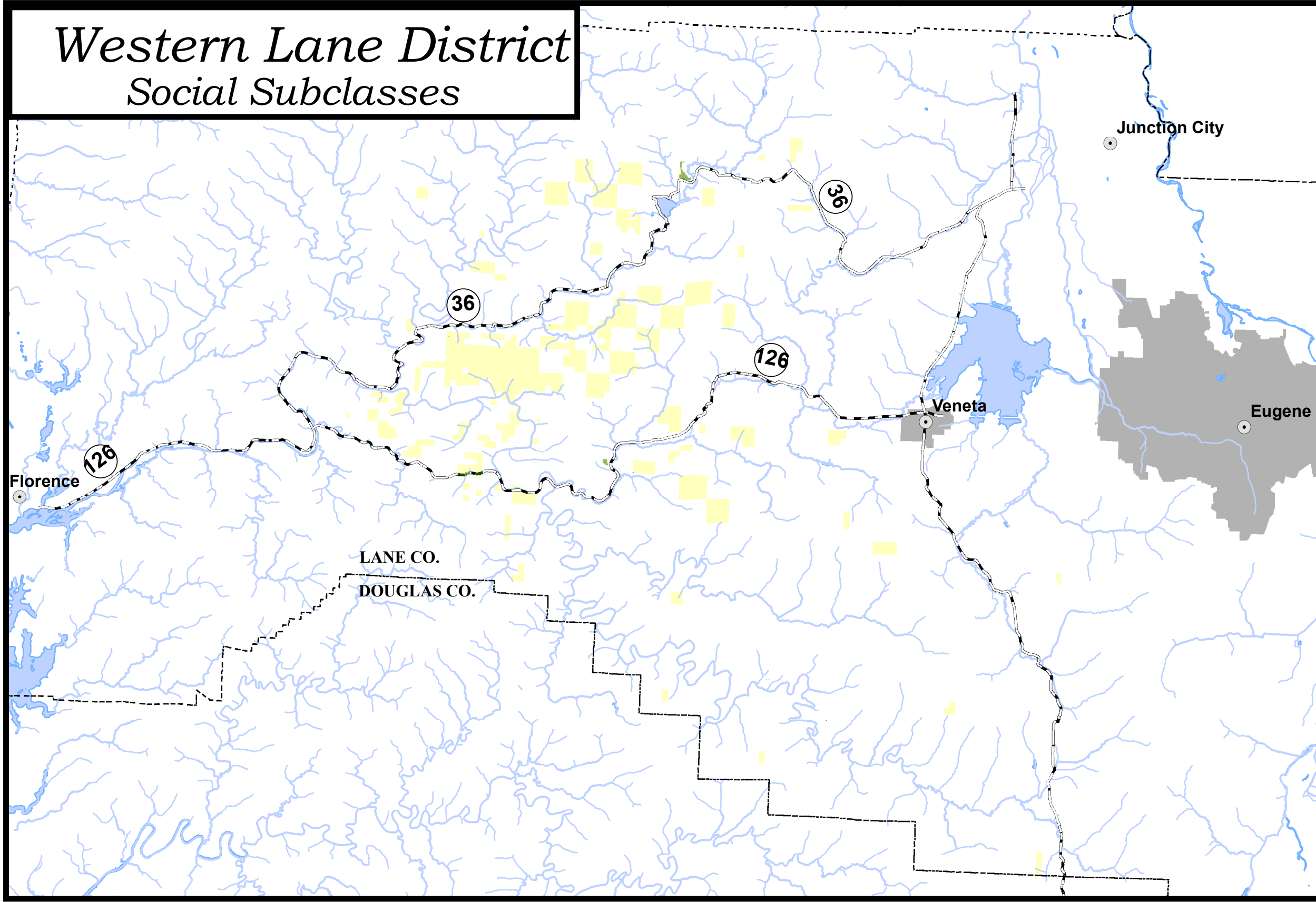


- | | | | | |
|----------------------------|------------------------|----------------|-----------------|------------------------------|
| Special Use SUBCLAS | Focused SUBCLAS | Towns | Roads | Managed Lands by Type |
| Administrative Sites | Easements | Towns | Roads | Managed Lands by Type |
| Easements | Research/Monitoring | Streams, Large | Streams, Medium | |
| Research/Monitoring | Transmission | | | |
| Transmission | | | | |
| Operationally Limited | | | | |



This product is for informational purposes, and may not be suitable for legal, engineering or surveying purposes. This information or data is provided with the understanding that conclusions drawn from such information are the responsibility of the user.
OB 3/14/2014

Western Lane District Social Subclasses



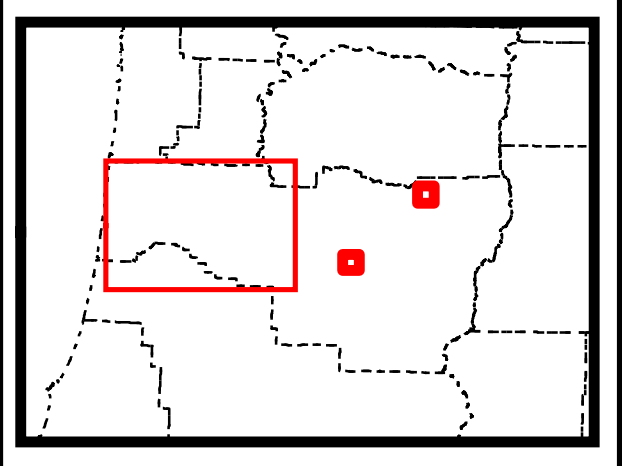
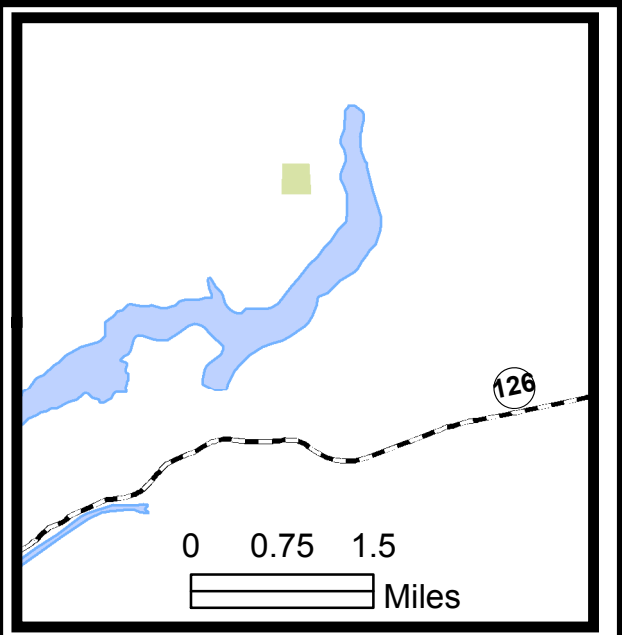
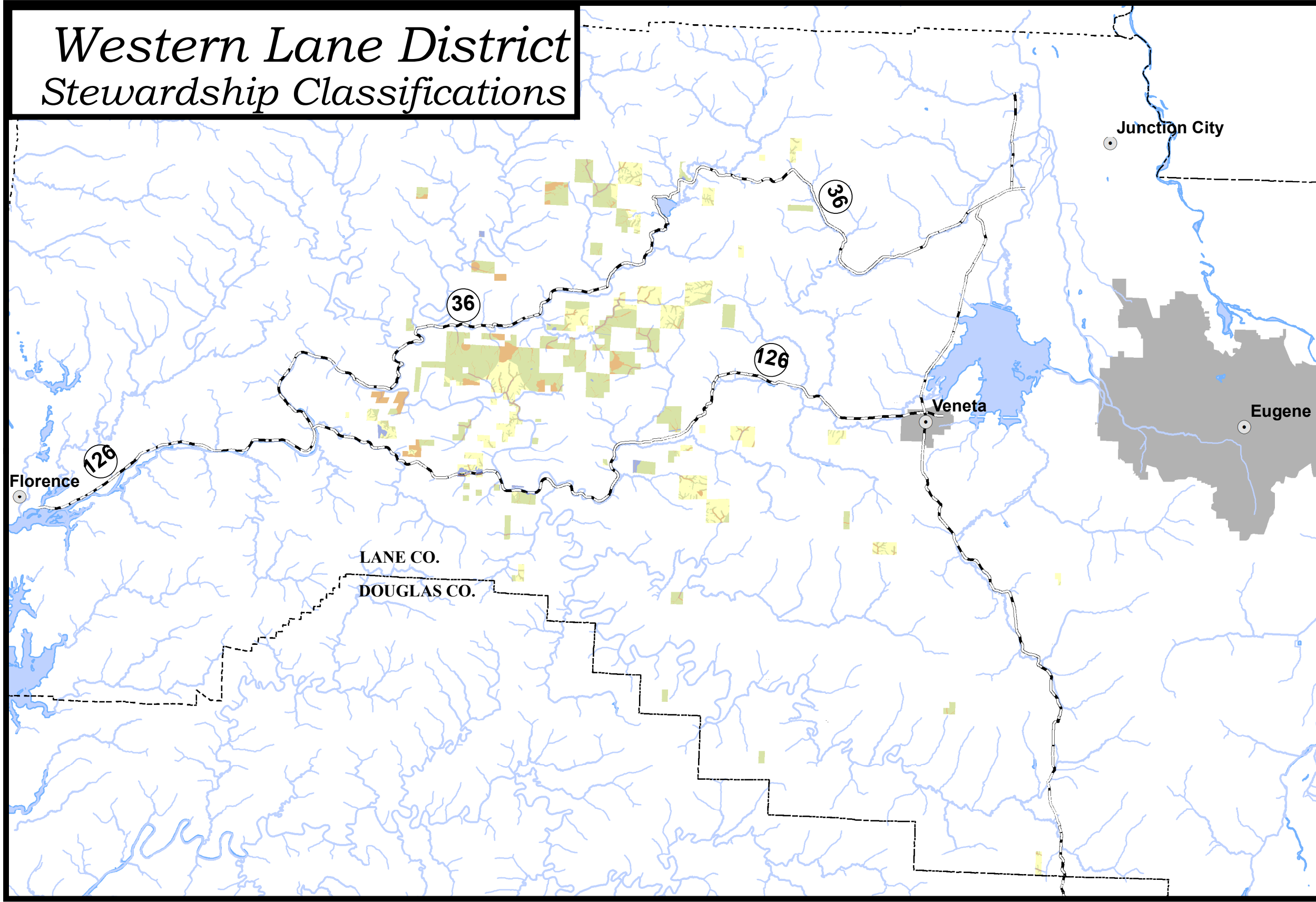
Special Use SUBCLAS	Focused SUBCLAS	Towns	Roads	Managed Lands by Type
Recreation	Cultural Resources	Towns	Roads	Managed Lands by Type
Visual	Domestic Water Use		Streams, Large	
	Visual		Streams, Medium	
	Recreation			



This product is for informational purposes, and may not be suitable for legal, engineering or surveying purposes. This information or data is provided with the understanding that conclusions drawn from such information are the responsibility of the user.

OB 3/14/2014

Western Lane District Stewardship Classifications



Stewardship Classifications

- STEWARDSHP**
- High Value Conservation Area
 - Special Use
 - Focused
 - Other

Towns

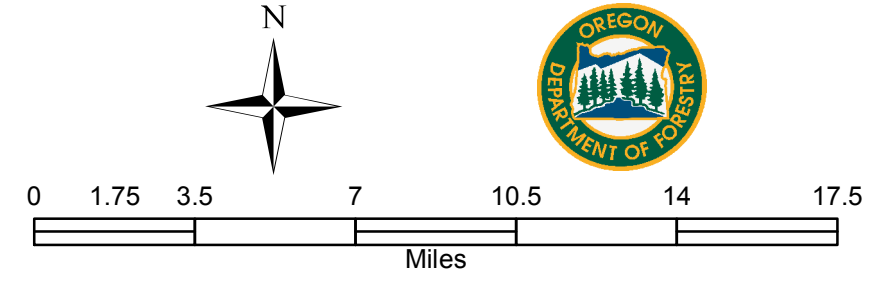
- Towns

Roads

- Roads
- Streams, Large
- Streams, Medium

Managed Lands by Type

- Managed Lands by Type



This product is for informational purposes, and may not be suitable for legal, engineering or surveying purposes. This information or data is provided with the understanding that conclusions drawn from such information are the responsibility of the user.

OB 3/14/2014

PRIMARY HARVEST OPERATIONS - FOREST RESOURCE SUMMARY

District:

Western Lane

Fiscal Year 2015

Date: 02/14/2014

This table lists Forest Resources and other issues addressed within Pre-Operations Report due to their presence within or near harvest operations

Primary Harvest Operations	Unit (Optional)	Forest Health Issues ¹	Invasive Species	LYR/OFS Structures ²	Landcape Design LYR/OFS ³	Install/Replace Culverts on Fish Bearing / Perennial Streams	Harvesting within 100' of Fish Bearing Stream	Domestic Water Source	Potential Stream Habitat Improvement ⁴	Within Aquatic Anchor	Within Terrestrial Anchor	Operating within a NSO Provincial Circle	Within 1/4 mile of MMMA	T&E Fish Adjacent to Harvest Unit / Haul Route ⁵	T&E Plants	Geotechnical Issues Needing Field Review	Recreation Sites	Cultural Resources	Scenic Resources	Other Resources or Issues	
Green 10	1		x									x									
Tilden Top	1,2,3		x									x				x					
Speed Walker	1		x									x	x								

¹ A 'x' (in any column) indicates yes the resource or other issue occurs within or near the harvest operation and is addressed by the Pre-Operations Report

² A 'x' indicates the harvest operation contains stands that are currently in a Layered or Older Forest Stand Structure

³ A 'x' indicate that the operation contains areas that have been designated for the development of complex forest stands

⁴ The final decision on these projects will occur during sale preparation and inconsultation with ODFW.

⁵ This table lists harvest operations (units or log haul routes) that are adjacent to streams that are known to contain T&E fish. The Pre-Operation Report identifies whether T&E fish are present in the basin.

TIMBER HARVEST OPERATIONS - FOREST STRUCTURE SUMMARY

District: Western Lane

Fiscal Year 2015

Date: 06/24/2014

Current Structure	
	Total
REG	
CSC	
UDS	266
LYR	
OFS	
Total	266

Post Harvest Structure				
REG	CSC	UDS	LYR	OFS
266				
266	0	0	0	0

Desired Future Condition		
GEN	LYR	OFS
266	0	
266	0	0

FOREST ROADS SUMMARY

District: Western Lane

2015

Date:

06/24/2014

Operation	Construction		Improvement		Other Projects	Total Project Costs	Gross Value of Operation	Total Cost as a percent of Gross Value	Comments
	Miles	Cost	Miles	Cost					
Green 10	1.1	\$121,000	2.7	\$2,000	\$0	\$123,000	\$913,000	13.5%	
Tilden Top	0.1	\$10,000	3.5	\$35,000	\$20,000	\$65,000	\$745,000	8.7%	
Speed Walker	0.2	\$58,500	0.2	\$8,000	\$10,500	\$77,000	\$523,000	14.7%	
Total	1.4	\$189,500	6.4	\$45,000	\$30,500	\$265,000	\$2,181,000	12.2%	

Alternate Operations

Aha Pataha	0.5	\$49,000	1.9	\$92,000	\$7,000	\$148,000	\$1,453,000	10.2%	
Barber North	0.4	\$61,000	0.0	\$0	\$6,000	\$67,000	\$314,000	21.3%	
GM Thin	0.9	\$44,000	0.3	\$9,000	\$2,000	\$55,000	\$350,000	15.7%	
Good Barber	0.1	\$18,000	0.4	\$38,000	\$14,000	\$70,000	\$699,000	10.0%	
Skinny Bear	0.1	\$8,000	2.0	\$82,000	\$1,000	\$91,000	\$448,000	20.3%	

Road Projects Not Funded by Harvest Operations

Operation	Construction		Improvement		Other Projects	Total Project Costs	Funding	Comments
	Miles	Cost	Miles	Cost				
Road Maintenance						\$10,000	FDF	
						\$0	FDF	
						\$0		
						\$0		
						\$0		
						\$0		

REFORESTATION AND YOUNG STAND MANAGEMENT SUMMARY

District: Western Lane

Fiscal Year: 2014

Date: 02/14/2014

ODF Funded Activities Management Activity	Board of Forestry			Common School Forest Lands			District	
	Acres Planned	Average Cost*/Acre	BOF Cost	Acres Planned	Average Cost*/Acre	CSL Cost	Total Acres	Total Cost
Initial Planting	352	\$280.00	\$98,560.00	64	\$280.00	\$17,920.00	416	\$116,480.00
Interplanting	98	\$150.00	\$14,700.00			\$0.00	98	\$14,700.00
Underplanting	0	\$0.00	\$0.00			\$0.00	0	\$0.00
Tree Protection-Barriers	0		\$0.00			\$0.00	0	\$0.00
Tree Protection-Direct Control	0		\$0.00			\$0.00	0	\$0.00
Site Prep-Chemical- Aerial	0	\$60.00	\$0.00			\$0.00	0	\$0.00
Site Prep-Chemical- Hand	352	\$100.00	\$35,200.00	64	\$280.00	\$17,920.00	416	\$53,120.00
Site Prep -Slash Burning	80	\$25.00	\$2,000.00			\$0.00	80	\$2,000.00
Site Prep -Mechanical	0		\$0.00			\$0.00	0	\$0.00
Fertilization	0		\$0.00			\$0.00	0	\$0.00
Noxious weeds	0		\$0.00			\$0.00	0	\$0.00
Release-Chemical- Aerial	0		\$0.00			\$0.00	0	\$0.00
Release,-Chemical-Hand	156	\$110.00	\$17,160.00			\$0.00	156	\$17,160.00
Release-Mechanical-Hand	0		\$0.00			\$0.00	0	\$0.00
Precommercial Thinning	0		\$0.00			\$0.00	0	\$0.00
Pruning	0		\$0.00			\$0.00	0	\$0.00
Other			\$0.00			\$0.00	0	\$0.00
Totals	1,038	--	\$167,620.00	128	--	\$35,840.00	1,166	\$203,460.00

*Planting costs include all costs including seedlings

Grant Funded Activities Management Activity	Board of Forestry			Common School Forest Lands			District		Funding
	Acres Planned	Average Cost*/Acre	Cost	Acres Planned	Average Cost*/Acre	Cost	Total Acres	Total Cost	
			\$0.00			\$0.00	0	\$0.00	
			\$0.00			\$0.00	0	\$0.00	
			\$0.00			\$0.00	0	\$0.00	
			\$0.00			\$0.00	0	\$0.00	

RECREATION MANAGEMENT SUMMARY

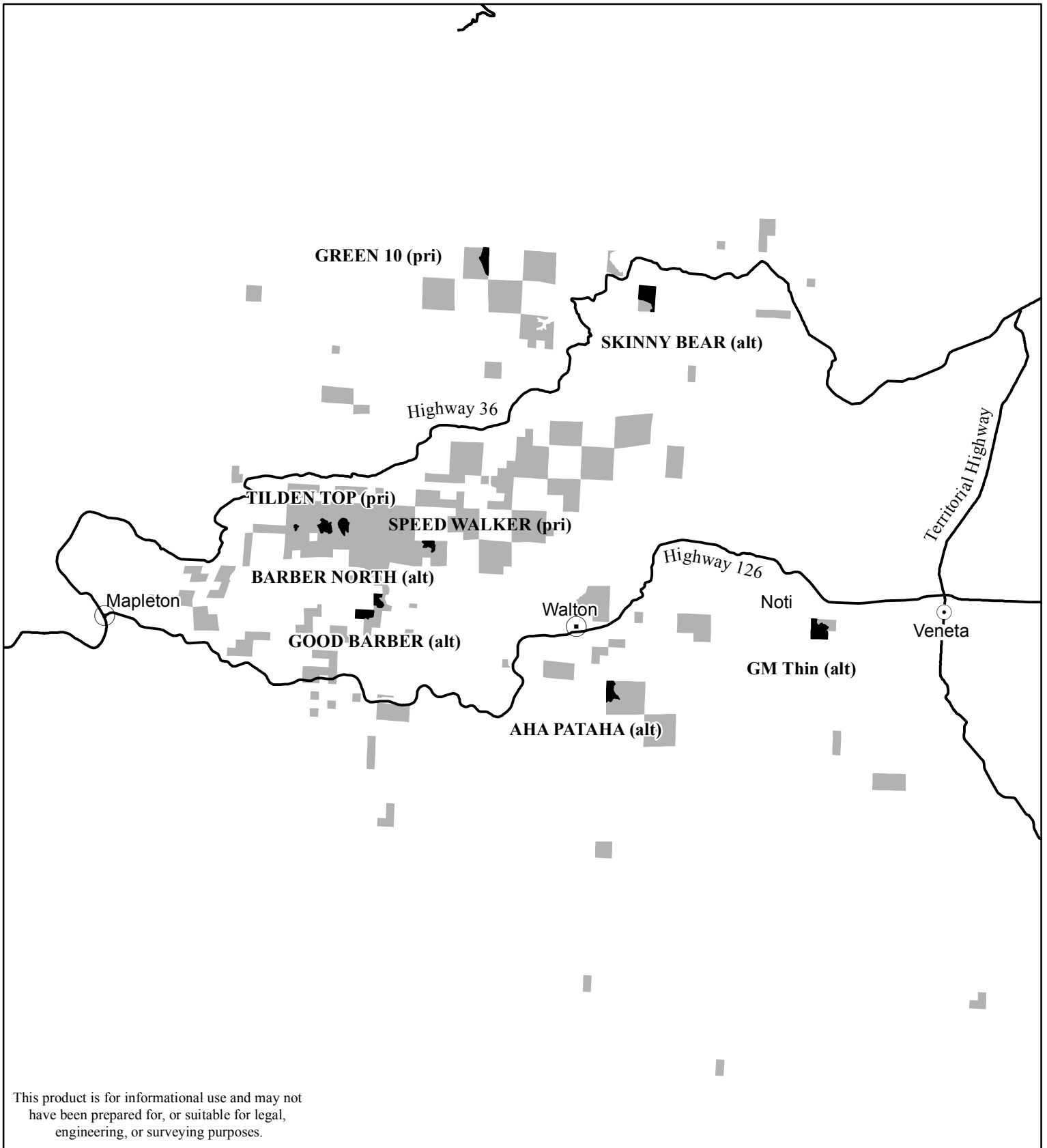
District: Western Lane

Fiscal Year: 2015

02/14/2014

Operation	Unit of Measure	Current	Construction Project	Construction Cost (Funding)		Improvement Projects	Improvement Cost (Funding)		Total Cost	Comments
				ODF	Other		ODF	Other		
Facilities										
Campsites	Sites								\$0	None on District
Day Use Areas									\$0	
Trailheads									\$0	
Interpretive Sites									\$0	
(Other)	Sites								\$0	
Trails										
Non-Motorized	Miles								\$0	
Motorized	Miles								\$0	





Total: \$0



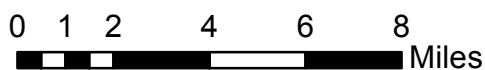
VICINITY MAP

FY 2015 AOP
WESTERN LANE DISTRICT

Legend

-  Towns
-  Highways
-  2015 Sales
-  ODF Ownership

Approximate Scale
1 inch = 4 miles



"STEWARDSHIP IN FORESTRY"



- Appendix D -

CONSULTATION WITH OTHER AGENCIES

During the course of the planning process Oregon Department of Forestry foresters and planners have coordinated their efforts with specialists within other areas of expertise such as biologists and geologists within ODF and in other organizations such as Oregon Department of Fish and Wildlife and the US Fish and Wildlife Service.

Each year the Western Lane District consults with a group of peers on the individual timber sales in a pre-operations meeting where the annual operations plan (AOP) is presented. This year, the meeting consisted of the area biologist, ODF aquatic specialist, two division biologists, operations coordinator, division engineer, district planner/T&E coordinator, and management unit forester. The area geotechnical specialist, whom was not present at the meeting, also reviewed the proposed AOP.

An Oregon Department of Fish and Wildlife biologist also attended the AOP review meeting. No specific comments were provided by the ODFW biologist.

The AOP was reviewed by the US FWS. ODF received comments from US FWS on one of the sales in this plan (Speed Walker). ODF biologists rated this timber sale as low risk to northern spotted owls and US FWS concurred. In a report dated April 29, 2014, US FWS commented on their review of sales Statewide and concluded that the sales in the Western Lane District were low risk to owls in the area.

- Appendix E -

**PUBLIC COMMENT PROCESS FOR
THE 2015 ANNUAL OPERATIONS PLAN**

The Oregon Department of Forestry issued a Press Release on March 17, 2014, announcing a formal public comment period for the 2015 Annual Operations Plans from March 17 through May 2, 2014.

The purpose of the Public Comment Period was to provide an opportunity for the public to review the AOPs, ask questions, make recommendations, and offer comments. As a public agency, ODF operates in the best interest of Oregonians, conducting business in an open way with opportunities for scrutiny to foster and maintain public confidence that ODF operations are benefiting Oregonians.

Past experience has shown that public comments have the potential to improve plans, so the objective was not only to inform the public, but to receive feedback that would help to clarify the AOPs, improve their consistency with the long range FMPs and IPs, and to become aware of any new information that could affect a planned operation or improve its efficiency or effectiveness.

The State Forest Advisory Committee (SFAC) reviewed the Western Lane District FY15 AOP and had no specific comments.

At the end of the public comment period, the Western Lane District received no specific comments regarding the 2015 AOP.

Note: A complete letters of all public comments and the responses for other districts related to the district FY2015 AOP can be found on our web site:

http://www.oregon.gov/odf/pages/state_forests/annual_operations_plans.aspx