

**KLAMATH-LAKE  
DISTRICT  
2016 ANNUAL  
OPERATIONS PLAN**

# TABLES OF CONTENTS

<b>INTRODUCTION .....</b>	<b>4</b>
<b>INTEGRATED FOREST MANAGEMENT OPERATIONS .....</b>	<b>5</b>
<b>Timber Harvest Operations .....</b>	<b>5</b>
Overview of Timber Harvest Operations.....	5
Minor Landscape Design Modifications ...	<b>Error! Bookmark not defined.</b>
Summary of Timber Harvest Operations by Basin	<b>Error! Bookmark not defined.</b>
<b>Forest Roads Management .....</b>	<b>6</b>
Overview .....	6
Road Construction .....	6
Road Improvement .....	6
Road Access Management .....	7
Road Maintenance .....	7
Land Surveying .....	7
<b>Young Stand Management .....</b>	<b>7</b>
Site Preparation .....	7
Planting .....	7
Vegetation Management .....	7
Tree Protection .....	7
Pre-commercial Thinning.....	8
Fertilization.....	8
<b>Recreation Management.....</b>	<b>8</b>
Overview of Recreation Management .....	8
Facilities (Campgrounds, View Points, Trail Heads, etc.) .....	9
Trails.....	9
Management Activities.....	<b>Error! Bookmark not defined.</b>

Land Exchange.....	9
Other Integrated Forest Management Operations.....	9
<b>Planning (and Information Systems).....</b>	<b>10</b>
Stand Level Inventory and Other Vegetation Inventories .....	10
Fish and Wildlife Surveys.....	10
Watershed Assessments.....	11
Research and Monitoring.....	11
Other Planning Operations .....	11
<b>Public Information and Education .....</b>	<b>11</b>
<b>Administration .....</b>	<b>12</b>
<b>Appendixes.....</b>	<b>13</b>
<b>A. Summary Tables.....</b>	13
<b>B. Maps.....</b>	19
<b>C. Consultation with Other Agencies.....</b>	25
<b>D. Public Involvement.....</b>	
<b>E. Pre-Operations Reports.....</b>	

---

# KLAMATH-LAKE DISTRICT

## 2016 ANNUAL OPERATIONS PLAN

### INTRODUCTION

This document describes activities planned on the Eastern Region state forest lands during Fiscal Year 2016 (July 1, 2015 to June 30, 2016). All the eastern region state forest lands are located on the Klamath-Lake District in Klamath County. With the establishment of Gilchrist State Forest, the district manages approximately 82,292 acres of forest land, 75,465 acres of Board of Forestry lands and 6,827 acres of Common School Forest lands. Management of these lands is guided by the Eastern Region Long- Range Forest Management Plan (LRFMP), which was approved in October, 1995.

This Annual Operations Plan (AOP) describes how the Long-Range Plan will be implemented during the 2016 fiscal year. The AOP includes this summary document with sections on commercial forest management operations, roads and engineering, cultural resources surveys, wildlife surveys, etc. It also includes summary tables. Pre-operations reports that describe the individual timber sales being proposed are available upon request. Reevaluation of stands to be entered in 2016 resulted in more acres being treated than were identified in the Long Range Plan. This additional acreage helps to offset those years that in which more acres than the annual objective were treated. The final plan will contain a public involvement summary that describes the results of the public involvement activities related to this AOP.

Keep in mind as you read the AOP summary, the document describes management activities for contracts which will be prepared during the fiscal year (commercial forest management operations and roads) as well as activities that will occur on the ground during the fiscal year (site prep, tree planting, pre-commercial thinning, fuels reduction).

Table 1. Annual Operations Plan objectives compared to annual objectives identified in the Klamath-Lake District Implementation Plan. All values are acres, except for Volume.

Silvicultural Activity	IP Annual Objective		2016 AOP Objective
	Low	High	
Partial Cut Harvest	1197		1588
Regeneration Harvest			0
Rehabilitation			0
Reforestation (Initial Planting)			303
Pre-commercial Thinning			1500
Fertilization			0
Pruning			0

# INTEGRATED FOREST MANAGEMENT

## OPERATIONS

### Timber Harvest Operations

#### **Overview of Timber Harvest Operations**

This plan proposes six sales; two in the North Block, one in Sun Pass State Forest (Alter Eagle) and a scattered tract (Rough Diamond). Two in the Southwest Block, one in the Bear Valley Tract (Bad Ham) and a scattered tract (Blurred Lines). Two in the East Block both scattered tracts (Buckeye and Livin' on a Prayer). All sales will be partial cut harvests with a combined acreage of 1,588. The long-range plan calls for an average of 1,190 acres to be harvested each year. The increased acreage is due to the need to treat some relatively low value scattered parcels in danger from insect damage.

The Alter Eagle Timber Sale, located in Sun Pass State Forest, contains 162 acres of partial cut harvest. Previous entries in this stand focused on reducing stocking levels primarily by removing the white fir component. This sale is intended to be a routine maintenance entry in order to maintain stand health and uneven aged characteristic. Removal specifications will include trees across all species and age classes in order to create growth space for the remaining stems. Approximately 10 percent of the sale area will be cleared in a series of patch cuts in order to create planting sites ensuring a new cohort of ponderosa pine.

Rough Diamond is located on a scattered tract adjacent to Highway 138 and is a pure lodgepole pine stand encompassing 642 acres. The last entry in this location was a salvage sale removing beetle killed trees leaving the survivors and a new cohort to grow. The area is currently experiencing another period of high bark beetle activity with abundant tree mortality. The intent of this sale is to reduce stocking and increase vigor allowing the stand to become more resistant to beetle depredation. Timber will be removed in a mosaic of large patch cuts and thinning areas across the across the sale area providing a new cohort of seedlings while maintaining a level of stand structure.

The Bad Ham Timber Sale combines portions of a previous timber sale with some previously non-entered stands located within the Bear Valley Tract. It is a 281 acre partial cut sale mostly mixed conifer with some ponderosa pine sites on the eastern perimeter. The intent of this entry is to reduce stocking while maintaining the uneven aged character. This sale will be thinned from below favoring ponderosa pine and Douglas-fir as leave trees while removing most merchantable white fir. Clumps of sub merchantable white fir will be retained in order to maintain species diversity. Dominant trees will be selected for removal where necessary to stimulate growth of the next cohort of trees. Approximately 10 percent of the sale area will be patch cut to provide planting sites for ponderosa pine and Douglas-fir.

Blurred lines is a 147 acre partial cut harvest located on a scattered parcel near Keno. This is intended to be a maintenance entry, reducing stand stocking, increasing vigor, and keeping the uneven aged stand structure. Trees across all species and age classes will be selected for removal. Patch cuts may be incorporated into the harvest prescription, if so, patch acres will not exceed 10 percent of the sale area.

The Buckeye Timber Sale is a 158 acre scattered parcel east of our Yainax Butte tract. This partial cut harvest is intended to be a maintenance entry, reducing stand stocking, increasing vigor, and keeping the uneven aged stand structure. Trees across all species and age classes will be selected for removal but ponderosa pine and incense cedar will be favored leave species. Patch cuts may be incorporated into the harvest prescription, if so, patch acres will not exceed 10 percent of the sale area.

The Livin' on a Prayer Timber Sale is a 198 acre partial cut harvest located on two scattered tracts on the east side of the district. Both stands are pure ponderosa pine existing on low quality sites, at or near the treeline, and in areas with significant bark beetle activity. The intent of this harvest is to reduce stocking and increase vigor setting the stands up to better withstand outbreaks. This will be a primarily from below thinning removing suppressed individuals from the understory, but dominant trees showing signs of poor health or significantly impeding the growth of desirable regeneration will be removed. Patch cuts may be incorporated into the harvest prescription, if so, patch acres will not exceed 10 percent of the sale area.

## Forest Roads Management

### **Overview**

All of the road management activities are associated with the proposed sales and will be limited to road improvement in order access the sale area and facilitate harvest. Where feasible we are closing roads that are no longer needed, or will not be utilized until the next sale entry in approximately 20 years.

### **Road Construction**

No new road construction is anticipated.

### **Road Improvement**

All timber sales will require road improvement either to access the sale area or to open interior roads to facilitate logging. Road improvement will primarily consist of removing encroaching brush, some minor reshaping of the roads surface, and reopening previously closed roads.

## **Road Access Management**

Whenever possible, existing roads are utilized to provide access the sale area. Emphasis is placed on closing or vacating roads; whether or not they are constructed for a particular sale.

## **Road Maintenance**

Almost all of the road maintenance is accomplished through timber sale contracts as project work. Most of this involves brushing roads along the haul route as well as spot rocking, reshaping, and maintaining drainage on portions of our main road systems to keep it in good condition for seasonal traffic. During the summer months, road watering is utilized to keep the road surface intact as well as providing good visibility for any traffic using the roads during active hauling.

## **Land Surveying**

No land surveys are anticipated.

## **Young Stand Management**

Due to budget constraints only those activities that are required by the Forest Practices Act, identified in the Eastern Oregon Long-Range Forest Management Plan, or are essential for establishment of a new stand will be undertaken.

## **Site Preparation**

No site prep is planned other than what is indirectly accomplished through timber harvest activities.

## **Planting**

Approximately 71,500 seedlings will be planted on Board of Forestry ownership in Sun Pass State Forest and scattered tracts. No planting is anticipated on Common School Forest Land.

## **Vegetation Management**

None

## **Tree Protection**

None

## **Pre-commercial Thinning**

Approximately 1500 acres in the Sun Pass State Forest are in need of pre-commercial thinning and would be scheduled if funds were to become available.

## **Fertilization**

None

## **Gilchrist Activities**

The recently acquired Gilchrist State Forest is comprised of high stocking levels of young Ponderosa pine and Lodgepole pine. This material ranges in size from seedlings to sawlog, with the current appraisal showing 1500 board feet of sawlog material per acre, most of which will be left in the residual stand. The current density levels put the Gilchrist State Forest at a high risk for pest-caused damage. The district has implemented a thinning program that will help reduce stand density to acceptable levels. Diseased and overstocked material from 5.0 inches to 12.0 inches DBH will be removed. Ponderosa pine will be the preferred species to leave. The removed material will be sold as sawlog and pulp volume. It is expected that this project will result in a break-even cash flow. The district will identify the highest priorities on the forest and take advantage of specific market conditions to make this program successful. The ensuing stand will be a Fire, Insect and Disease resistant stand. This project is supported by the management strategies from the 1995 Eastern Region Long-Range Forest Management Plan and policy direction as stated during the February, 2010 Board of Forestry meeting that approved the initial acquisition of the 43,235 acres of the Gilchrist State Forest:

“It is proposed that the lands acquired shall be designated as approximately 42,535 acres Silviculturally Capable and 700 acres Non-Silviculturally Capable. The Gilchrist tract forestlands will be managed consistent with the approved Eastern Oregon Region Forest Management Plan, which calls for uneven-aged management to provide a range of forest values. Following a post-acquisition study and planning phase, specific plans for managing the Gilchrist lands will be incorporated into the implementation plan and annual operations plans for the Klamath-Lake District.”

## **Recreation Management**

### **Overview of Recreation Management**

The primary recreation strategy in the Eastern Oregon Long-Range Forest Management Plan is to make District forests available for informal dispersed recreation. During development of the FMP, it was determined that current users value this type of opportunity because surrounding agencies and private landowners are providing a full spectrum of more developed as well as more primitive recreation opportunities.



## **Facilities (Campgrounds, View Points, Trail Heads, etc.)**

The Klamath Outdoor Science School (KOSS) will continue to develop facilities at the site as funding becomes available.

## **Trails**

The KOSS nature trail will continue to be maintained by seasonal staff as well as KOSS volunteers.

In Gilchrist maintenance will continue on the footpath connecting the high school to the bike path.

A new trail will be constructed in the Gilchrist State Forest east of the town of Gilchrist. This trail will start at the parking area south of the football field and end at the top of Crescent Butte. The construction will be performed in partnership with the Gilchrist High School.

## **Management Activities**

ODF is working with the “Klamath Trail Alliance” on a trail head, located off of a scattered Board of Forestry tract off Highway 140 w. KTA will level and gravel the parking area and construct a Kiosk on site.

## Land Exchange

District personnel will work on developing the Land Acquisition and Exchange Plan as time and workload allow.

5,360 were purchased from The Conservation Fund in FY 15. Funds have been secured and the remaining 23,000 are scheduled for acquisition from The Conservation Fund late FY15 or early FY16.

## Other Integrated Forest Management Operations

The Klamath-Lake District will continue to issue personal firewood cutting permits for areas where sufficient amounts of wood are available. The public may call our office to inquire about the availability of wood cutting areas. Permits will be issued only during the months outside of fire season.

A limited number of personal firewood permits will be issued, on a first come-first served basis with a limit of one per individual or household within a 12 month period. At this time, there is no fee for the permit which allows removal of 4 cords of firewood. The Oregon Department of Forestry does not guarantee the quality of availability of wood when issuing firewood cutting permits.

Designated firewood cutting areas will be marked on the permit map, which excludes active and sold timber sales, recreation sites, and planned operations. Active sales will be posted with “No Firewood Cutting” signs.

## **Sun Creek Bull Trout Restoration Project**

The Klamath-Lake District in partnership with ODF&W, Crater Lake National Park, and USF&W has implemented a project to expand bull trout distribution downstream from Crater Lake National Park (Park) onto the State Forest portion of Sun Creek. This effort supports a USFW Draft Recovery Plan for Bull Trout in the Klamath Basin.

Reestablishing headwater populations and increasing downstream distributions of bull trout have been presented by USFWS and ODFW as the most important recovery actions for bull trout in the Klamath Basin.

The first action completed for this restoration project was installing two temporary barriers that will prevent upstream migration of non-native fish into the bull trout recovery reach, but allow for downstream migration of bull trout. This was completed in the fall of 2010. The barriers can eventually be removed when bull trout have been established throughout Sun Creek and the threat from non-native fish has been mitigated.

The removal of the non-native fish through a chemical treatment was planned to take place above these barriers during the summer of 2011. This was delayed due to the need to reinforce the lower barrier to the high flow regime following the melting snow pack. The reinforcements were completed during the summer and fall of 2011 and chemical treatment was carried out during the summer of 2012. An additional treatment took place in August of 2013. Additional barrier reinforcement was completed October 2014. This consisted of clearing the channel below the barrier to avoid any ice dams, and reinforcing the sides of both barriers with large boulders.

All partners are continuing work on channel restoration below the barriers, with the end result being Sun Creek flowing directly into the head of the Wood River.

This approach (installation of barriers and removal of non-native fish with chemical treatment) was used in the upstream portion of Sun Creek flowing through the Park. The Park project has been declared a success with large increases in bull trout population and distribution within the park. Crater Lake National Park will continue to monitor the Sun Creek barriers and bull trout populations in Sun Pass.

## Planning (and Information Systems)

### **Stand Level Inventory and Other Vegetation Inventories**

District personnel will work on SLI as time and workload allow.

### **Fish and Wildlife Surveys**

Monitoring for Northern Goshawks will be conducted prior to auction if suitable habitat is present and if surveys are recommended by Salem staff.

Crater Lake National Park staff will monitor Bull Trout migration above the barriers that were installed on Sun Creek.

### **Watershed Assessments**

None

### **Research and Monitoring**

None

### **Other Planning Operations**

None

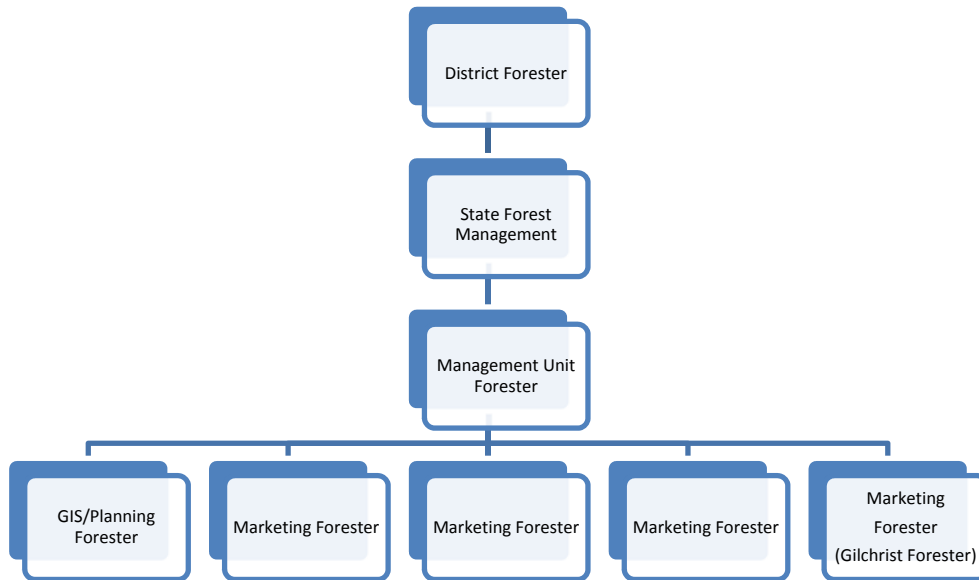
## Public Information and Education

The District will conduct public involvement activities related to the Annual Operations Plan. In addition to a general public comment period, the district will continue to work with the Klamath-Lake Forest Health Partnership as a focus group for the AOP process.

The Klamath Outdoor Science School (KOSS) has been operating since 2006. This site is a resident outdoor science school that serves primarily grade school students, in Sun Pass State Forest. This program provides an opportunity to provide youth, teachers, and parents with education about the working forest. ODF renewed the Special Use Permit that allows KOSS to develop a site near Kimball State Park. Over 350 students, teachers, and parent chaperones attended the camps in 2014. The permit requires review and approval of annual development plans. The program will continue to have day and overnight camps.

KOSS is currently in the process of construction of a pavilion and bathhouse. Two concrete pads were poured during the summer of 2013. The organization is still working on securing funds to develop the infrastructure.

# Administration



State Forests on the Klamath-Lake District are managed by the Management Unit under the direction of the District Forester. The unit is supervised by the Management Unit Forester. Four Marketing Foresters plan, prepare, and administer timber sales. A GIS/Planning Forester manages the forest geographic information.

---

## APPENDIXES

### **A. Summary Tables**

### **B. Maps**

### **C. Consultation with Other Agencies**

### **D. Public Involvement**

### **E. Pre-Operations Reports**





## PRIMARY HARVEST OPERATIONS - FOREST RESOURCE SUMMARY

District:

Klamath-Lake

Fiscal Year 2016

Date: 01/15/2015

This table lists Forest Resources and other issues addressed within Pre-Operations Report due to their presence within or near harvest operations

Primary Harvest Operations	Unit (Optional)	Forest Health Issues <sup>1</sup>	Invasive Species	LYR/OFS Structures <sup>2</sup>	Landcape Design LYR/OFS <sup>3</sup>	Install/Replace Culverts on Fish Bearing / Perennial Streams	Harvesting within 100' of Fish Bearing Stream	Domestic Water Source	Potential Stream Habitat Improvement <sup>4</sup>	Within Aquatic Anchor	Within Terrestrial Anchor	Operating within a NSO Provincial Circle	Within 1/4 mile of MMMA T&E Fish Adjacent to Harvest Unit / Haul Route <sup>5</sup>	T&E Plants	Geotechnical Issues Needing Field Review	Recreation Sites	Cultural Resources	Scenic Resources	Other Resources or Issues
Buckeye	1																x		
Alter Eagle	1																		Bald Eagle nest sites
Bad Ham	5																x		
Rough Diamond	1																		Powerline
Livin' on a Prayer	1,2																		
Blurred Lines	1																x		Keno

<sup>1</sup> A 'x' (in any column) indicates yes the resource or other issue occurs within or near the harvest operation and is addressed by the Pre-Operations Report  
<sup>2</sup> A 'x' indicates the harvest operation contains stands that are currently in a Layered or Older Forest Stand Structure  
<sup>3</sup> A 'x' indicate that the operation contains areas that have been designated for the development of complex forest stands  
<sup>4</sup> The final decision on these projects will occur during sale preparation and inconsultation with ODFW.  
<sup>5</sup> This table lists harvest operations (units or log haul routes) that are adjacent to streams that are known to contain T&E fish. The Pre-Operation Report identifies whether T&E fish are present in the basin.

## ALTERNATE HARVEST OPERATIONS - FOREST RESOURCE SUMMARY

This table lists Forest Resources and other issues addressed within Pre-Operations Report due to their presence within or near harvest operations

Alternate Harvest Operations	Unit (Optional)	Forest Health Issues <sup>1</sup>	Invasive Species	LYR/OFS Structures <sup>2</sup>	Landscape Design LYR/OFS <sup>3</sup>	Install/Replace Culverts on Fish Bearing / Perennial Streams	Harvesting within 100' of Fish Bearing Stream	Domestic Water Source	Potential Stream Habitat Improvement <sup>4</sup>	Within Aquatic Anchor	Within Terrestrial Anchor	Operating within a NSO Provincial Circle	Within 1/4 mile of MMMA	T&E Fish Adjacent to Harvest Unit / Haul Route <sup>5</sup>	T&E Plants	Geotechnical Issues Needing Field Review	Recreation Sites	Cultural Resources	Scenic Resources	Other Resources or Issues	

<sup>1</sup> A 'x' (in any column) indicates yes the resource or other issue occurs within or near the harvest operation and is addressed by the Pre-Operations Report

<sup>2</sup> A 'x' indicates the harvest operation contains stands that are currently in a Layered or Older Forest Stand Structure

<sup>3</sup> A 'x' indicate that the operation contains areas that have been designated for the development of complex forest stands

<sup>4</sup> The final decision on these projects will occur during sale preparation and in consultation with ODFW.

<sup>5</sup> This table lists harvest operations (units or log haul routes) that are adjacent to streams that are known to contain T&E fish. The Pre-Operation Report identifies whether T&E fish are present in the basin.



## TIMBER HARVEST OPERATIONS - FOREST STRUCTURE SUMMARY

District: Klamath-Lake

Fiscal Year 2016

Date: 01/15/2015

Current Structure	
	Total
REG	
CSC	
UDS	
LYR	
OFS	
Total	0

Post Harvest Structure				
REG	CSC	UDS	LYR	OFS
0	0	0	0	0

Desired Future Condition		
GEN	LYR	OFS
0	0	0



## REFORESTATION AND YOUNG STAND MANAGEMENT SUMMARY

District: Klamath-Lake

Fiscal Year: 2016

Date: 01/15/2015

ODF Funded Activities Management Activity	Board of Forestry			Common School Forest Lands			District	
	Acres Planned	Average Cost*/Acre	BOF Cost	Acres Planned	Average Cost*/Acre	CSL Cost	Total Acres	Total Cost
Initial Planting	137	\$66.44	\$9,102.28			\$0.00	137	\$9,102.28
Interplanting	166	\$13.00	\$2,158.00			\$0.00	166	\$2,158.00
Underplanting			\$0.00			\$0.00	0	\$0.00
Tree Protection-Barriers			\$0.00			\$0.00	0	\$0.00
Tree Protection-Direct Control			\$0.00			\$0.00	0	\$0.00
Site Prep-Chemical- Aerial			\$0.00			\$0.00	0	\$0.00
Site Prep-Chemical- Hand			\$0.00			\$0.00	0	\$0.00
Site Prep -Slash Burning			\$0.00			\$0.00	0	\$0.00
Site Prep -Mechanical			\$0.00			\$0.00	0	\$0.00
Fertilization			\$0.00			\$0.00	0	\$0.00
Noxious weeds			\$0.00			\$0.00	0	\$0.00
Release-Chemical- Aerial			\$0.00			\$0.00	0	\$0.00
Release,-Chemical-Hand			\$0.00			\$0.00	0	\$0.00
Release-Mechanical-Hand			\$0.00			\$0.00	0	\$0.00
Precommercial Thinning			\$0.00			\$0.00	0	\$0.00
Pruning			\$0.00			\$0.00	0	\$0.00
Other			\$0.00			\$0.00	0	\$0.00
<b>Totals</b>	<b>303</b>	<b>--</b>	<b>\$11,260.28</b>	<b>0</b>	<b>--</b>	<b>\$0.00</b>	<b>303</b>	<b>\$11,260.28</b>

\*Planting costs include all costs including seedlings

Grant Funded Activities Management Activity	Board of Forestry			Common School Forest Lands			District		Funding
	Acres Planned	Average Cost*/Acre	Cost	Acres Planned	Average Cost*/Acre	Cost	Total Acres	Total Cost	
			\$0.00			\$0.00	0	\$0.00	
			\$0.00			\$0.00	0	\$0.00	
			\$0.00			\$0.00	0	\$0.00	
			\$0.00			\$0.00	0	\$0.00	

## RECREATION MANAGEMENT SUMMARY

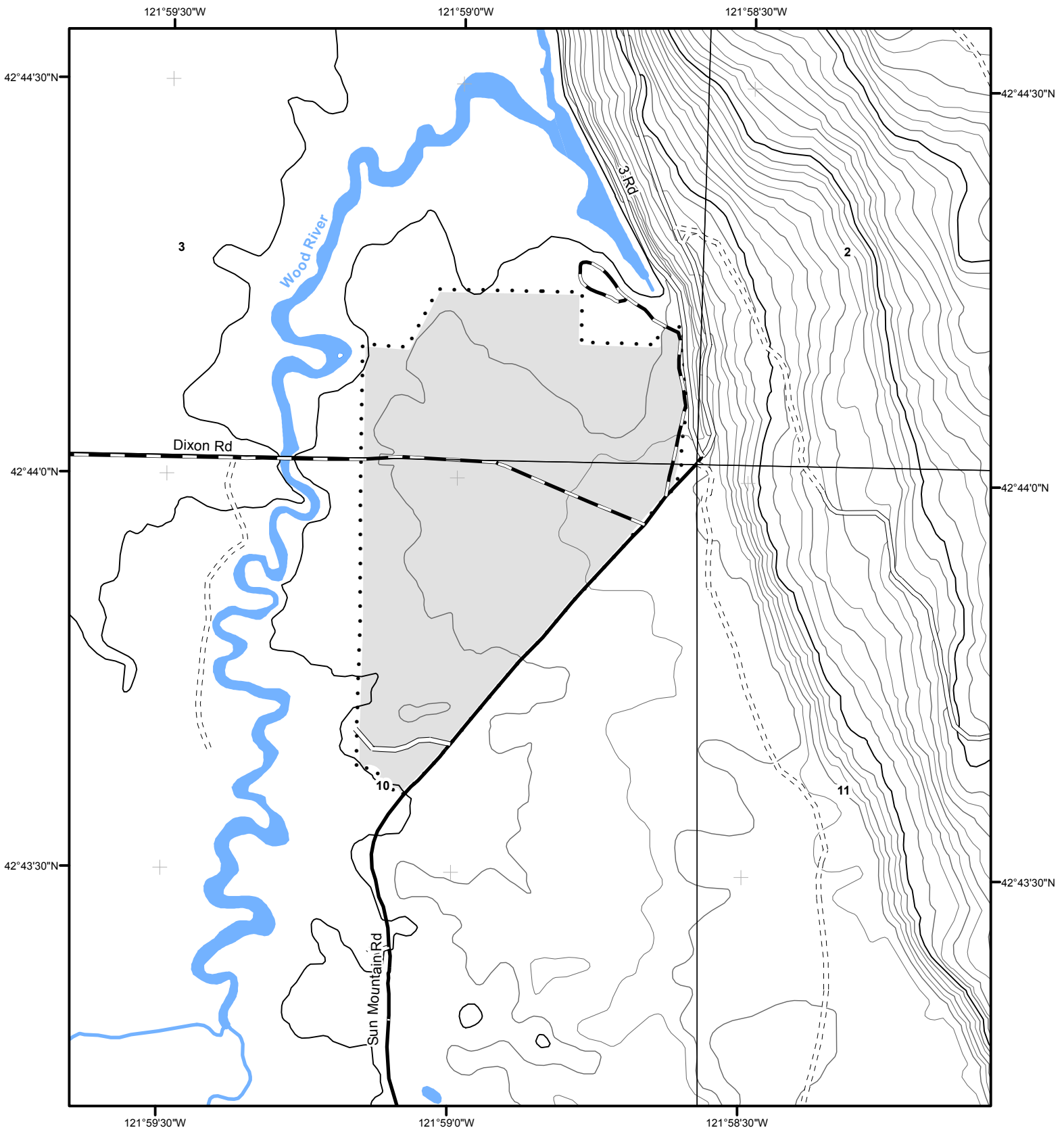
District: Klamath-lake

Fiscal Year: 2016

Date: 01/15/2015

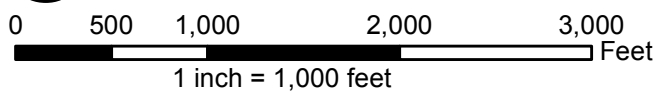
Operation	Unit of Measure	Current	Construction Projects	Construction Cost (Funding)		Improvement Projects	Improvement Cost (Funding)		Total Cost	Comments
				ODF	Other		ODF	Other		
<b>Facilities</b>										
Campsites	Sites								\$0	
Day Use Areas									\$0	
Trailheads									\$0	
Interpretive Sites									\$0	
(Other)	Sites								\$0	
<b>Trails</b>										
Non-Motorized	Miles								\$0	
Motorized	Miles								\$0	

**Total: \$0**

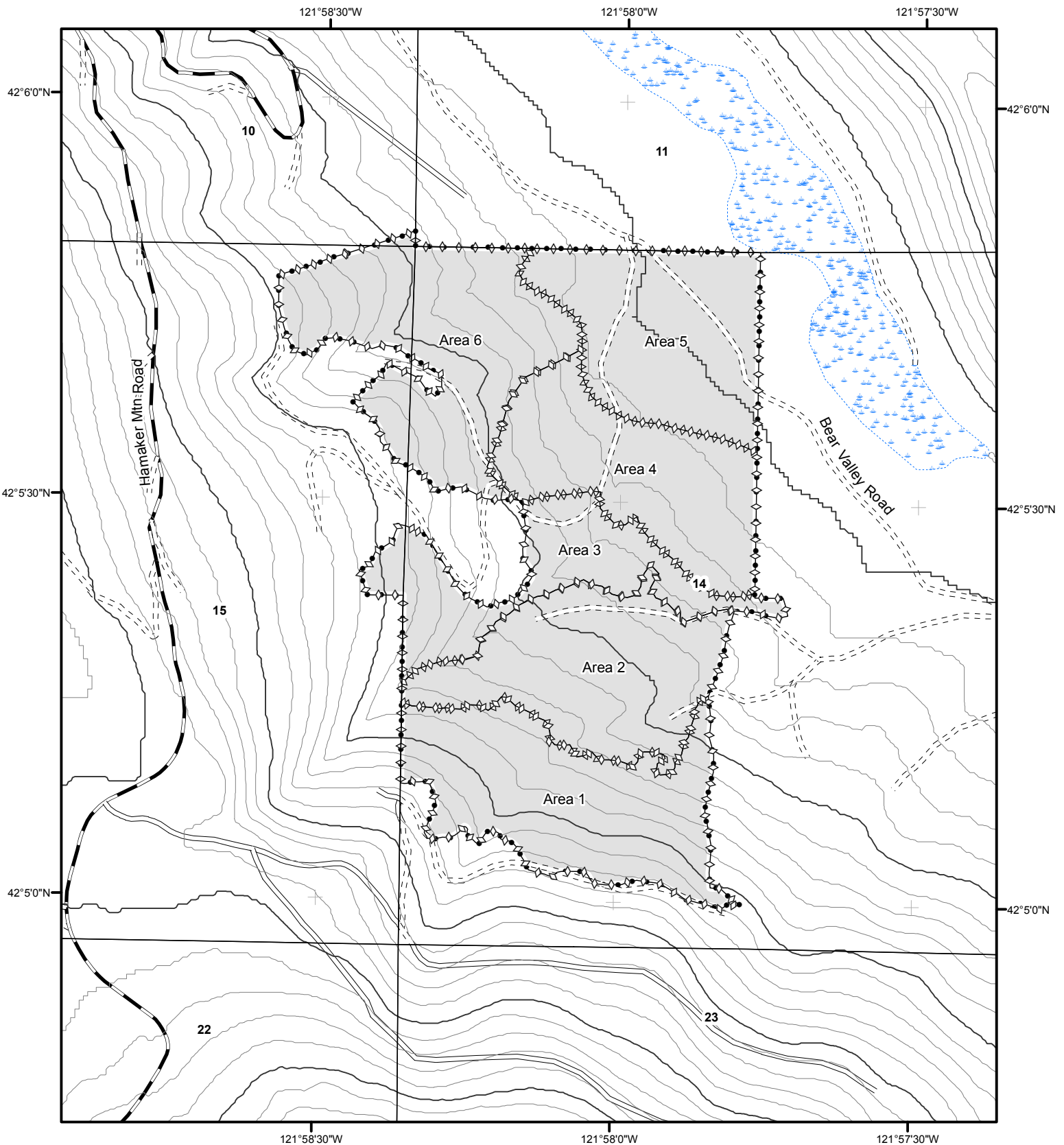


**FY 16**

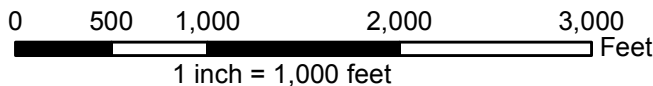
Klamath-Lake District  
 Alter Eagle Timber Sale  
 T32S, R7.5E, Portions of  
 Sections 3 and 10, W.M.  
 Klamath County, Oregon  
 Approximately 221 acres








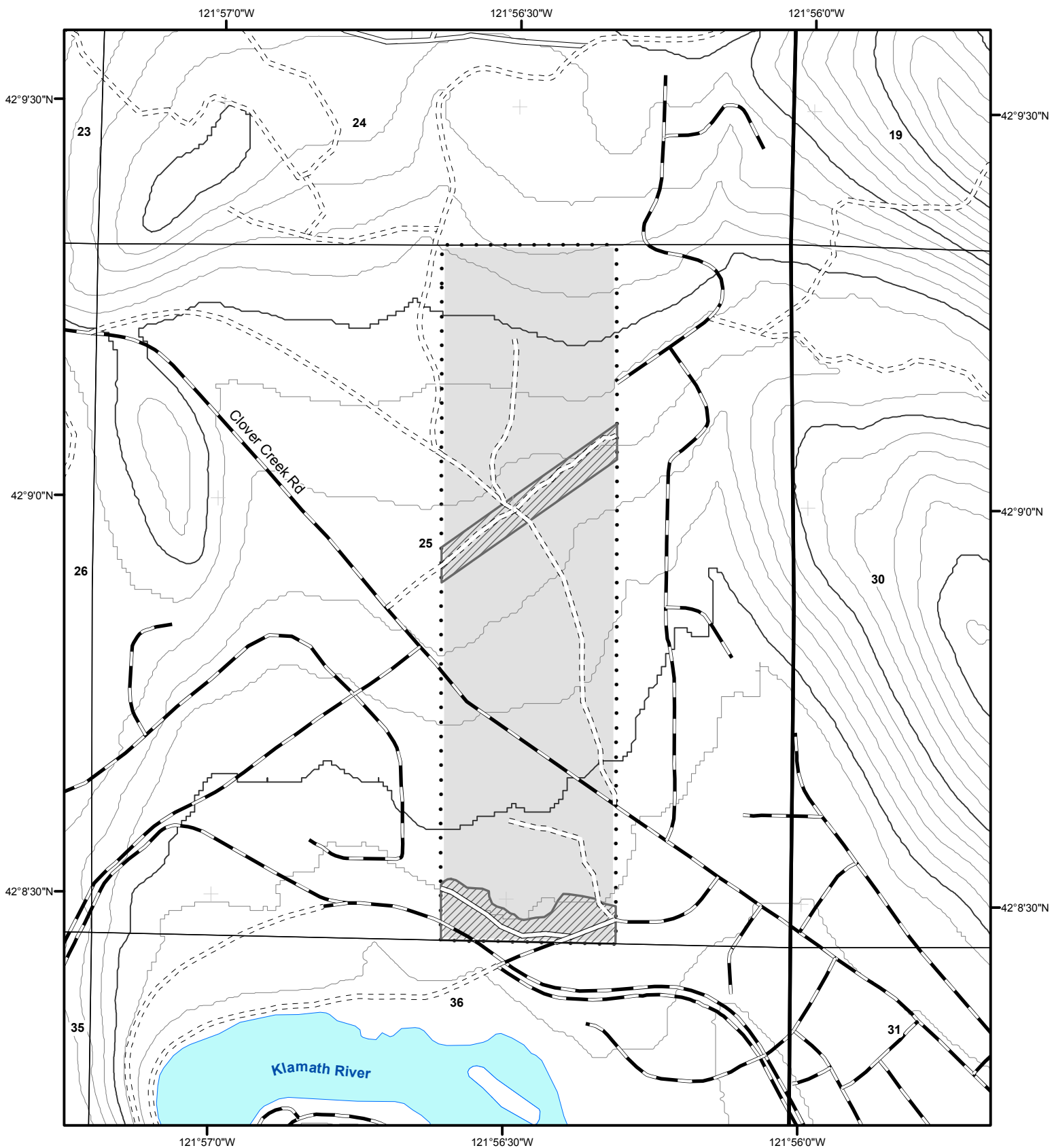
- Alter Eagle Timber Sale
- State highway
- Paved Road
- Surfaced Road
- Unsurfaced Road



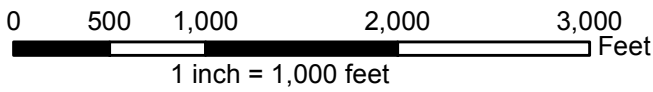
**FY 16**  
 Klamath-Lake District  
 Bad Ham Timber Sale  
 T40S, R7E, Portions of  
 Sections 14 and 15, W.M.  
 Klamath County, Oregon  
 Approximately 281 acres





-  Bad Ham Timber Sale
-  Wetlands
-  Paved Road
-  All weather Road
-  Unsurfaced Road

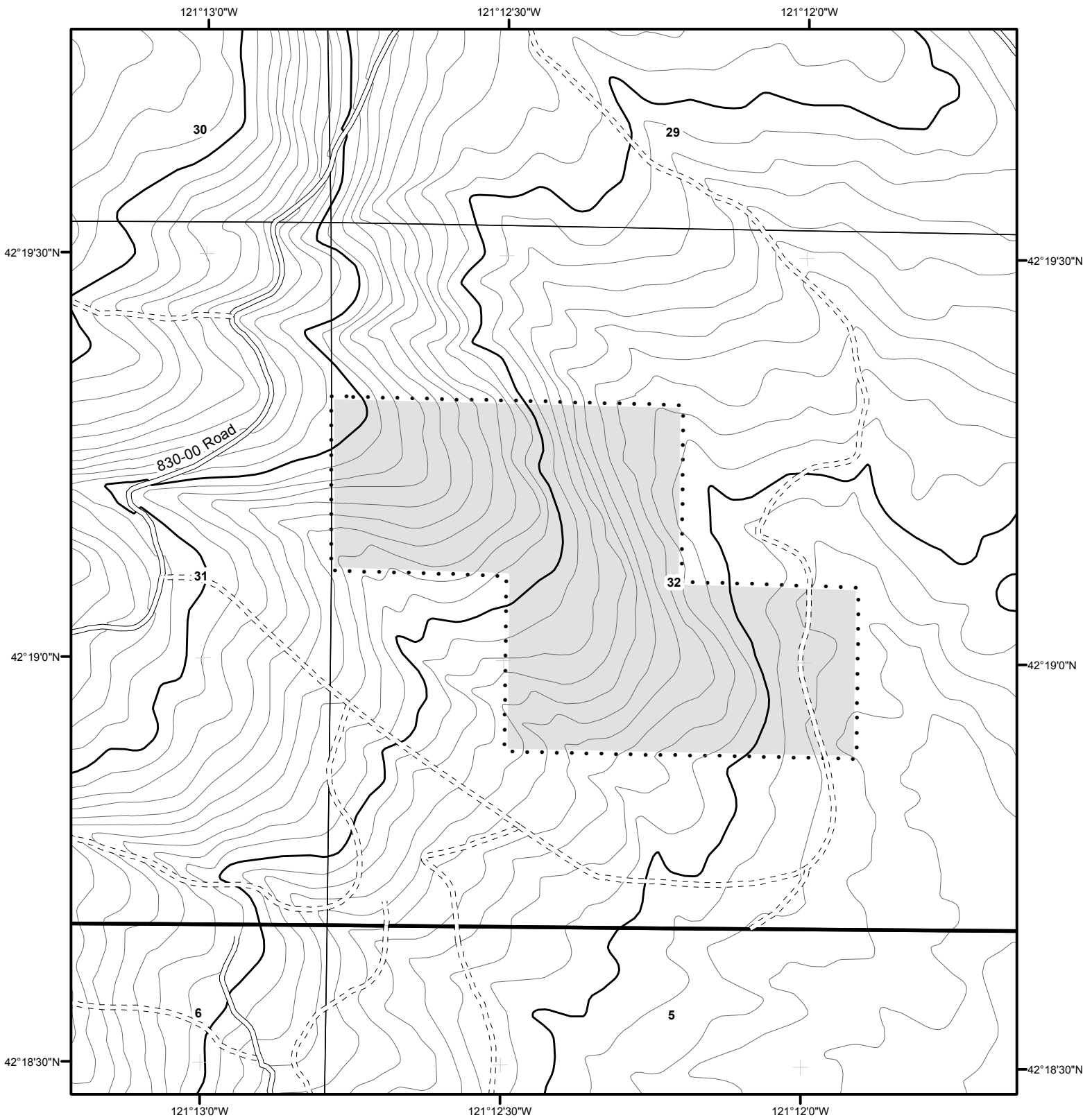


**FY 16**  
 Klamath-Lake District  
 Blurred Lines Timber Sale  
 T39S, R7E, Portions of  
 Section 25, W.M.  
 Klamath County, Oregon  
 Approximately 165 acres

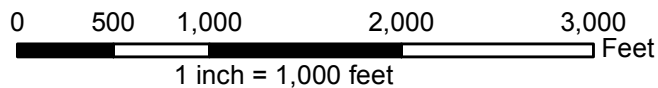
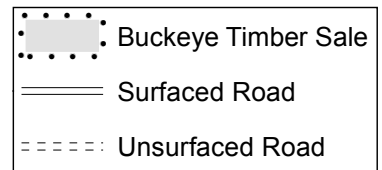


	Blurred Lines Timber Sale
	Exclusion

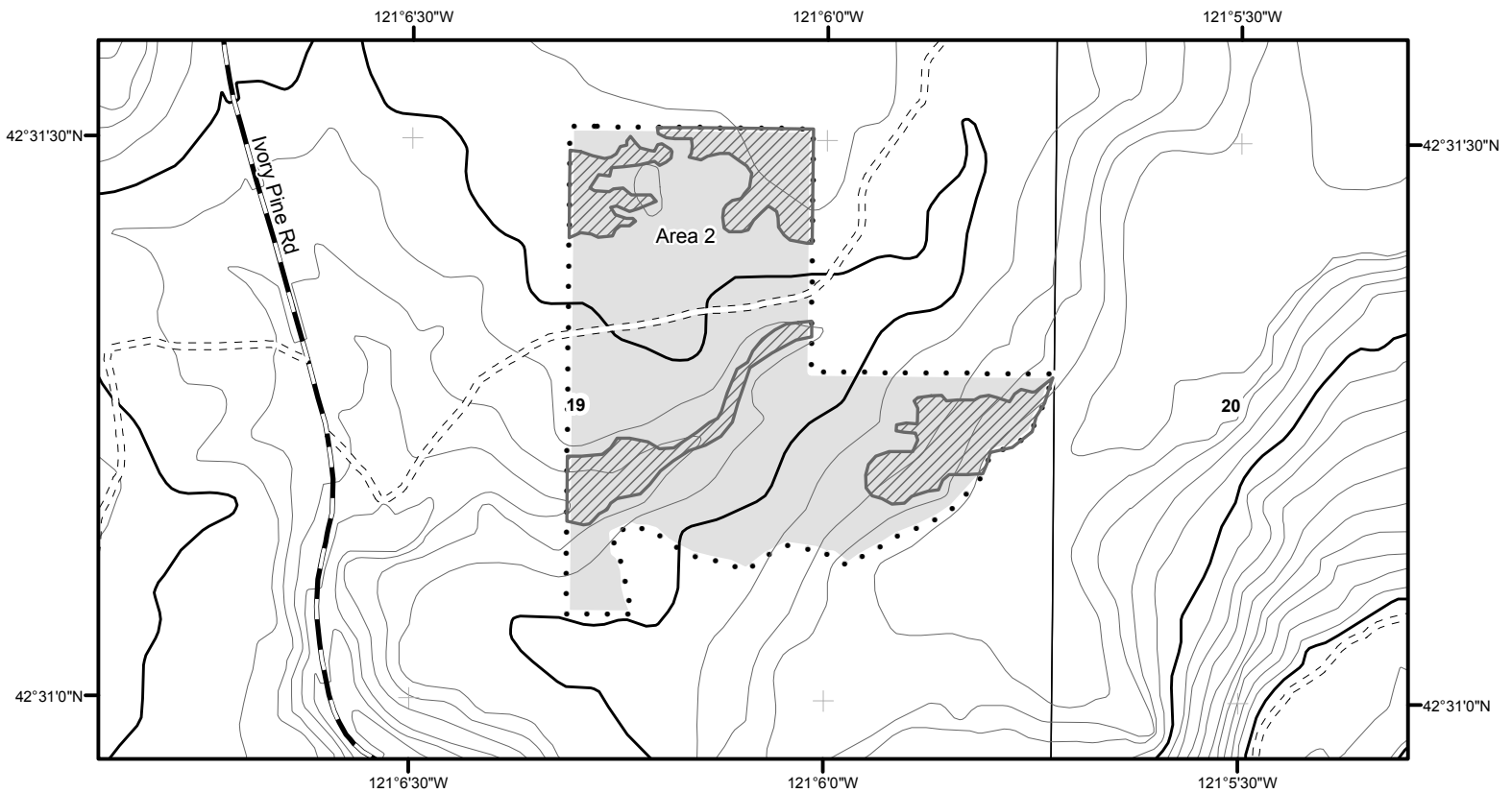
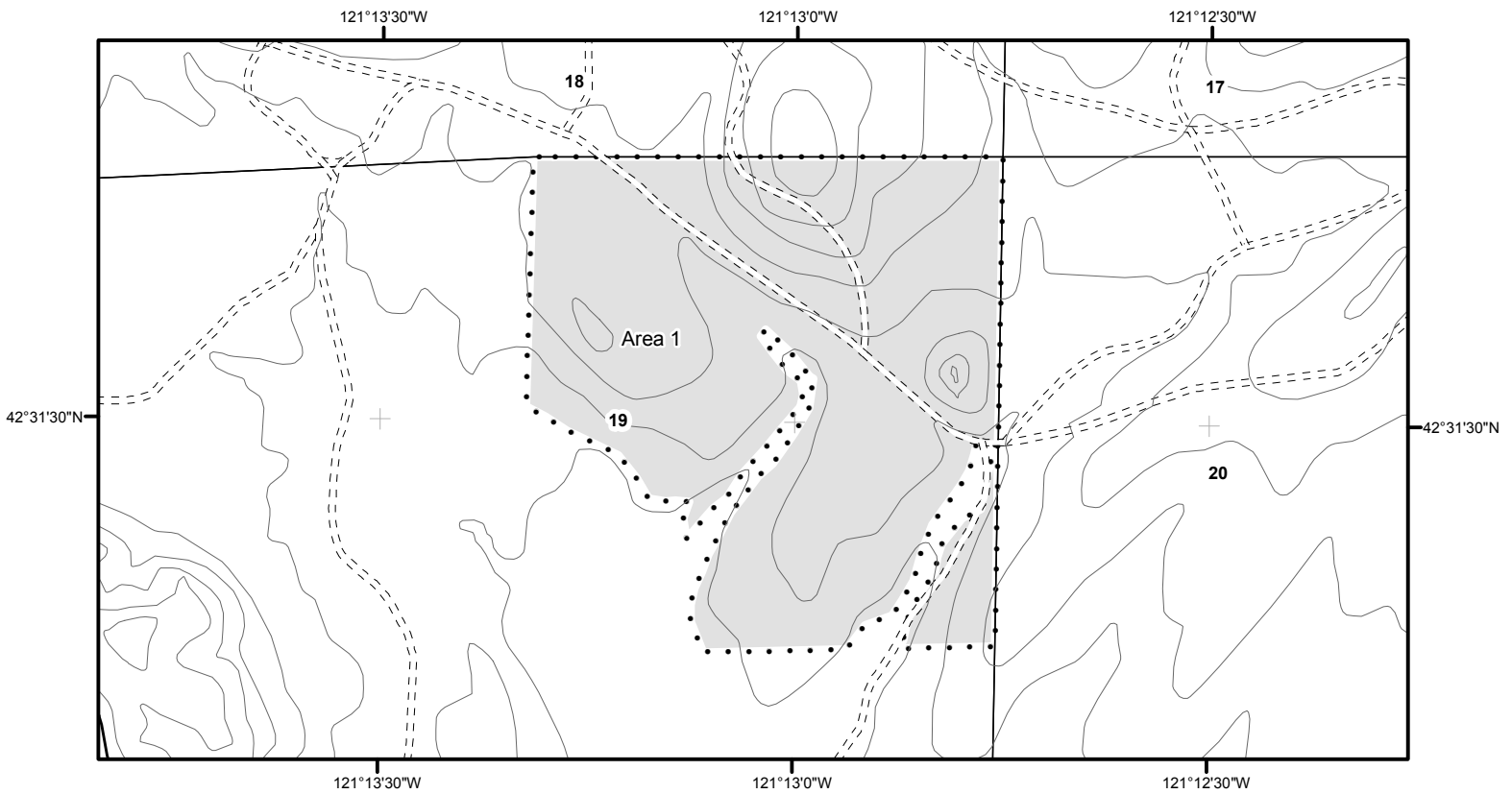
This product is for informational purposes and may not have been prepared for, or suitable for, legal, engineering, or surveying purposes.  
 Created: January 15, 2015, KLD GIS



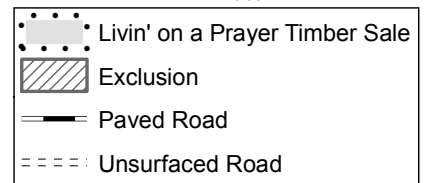
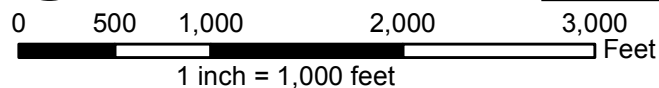
**FY 16**  
 Klamath-Lake District  
 Buckeye Timber Sale  
 T28S, R7E, Section 3, W.M.  
 Klamath County, Oregon  
 Approximately 158 acres

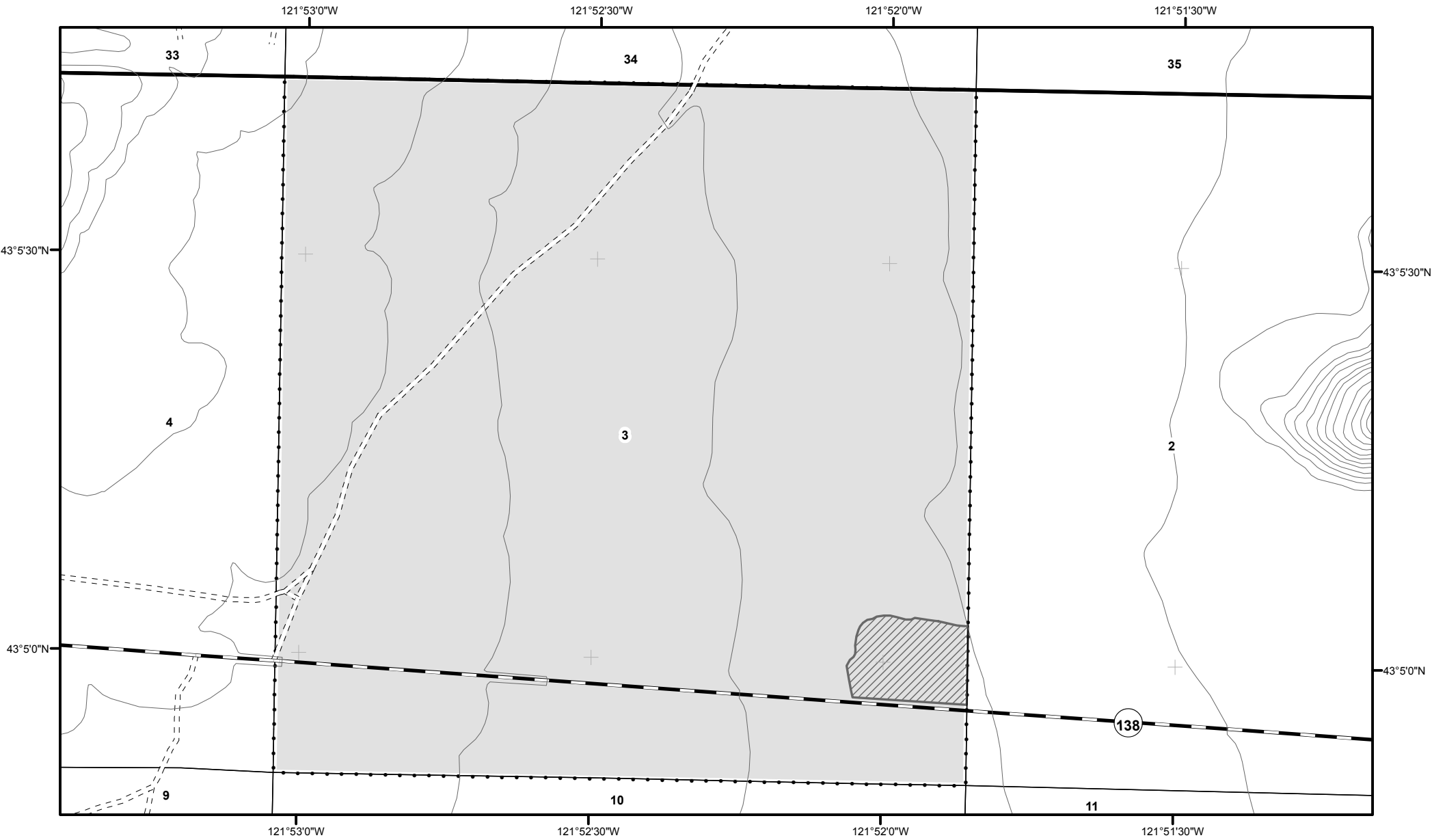




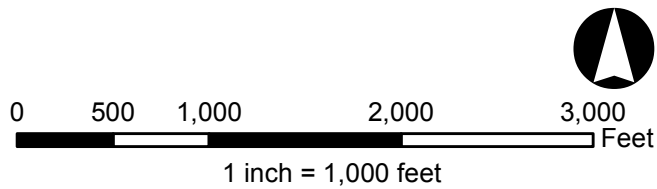





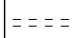
**FY 16**  
 Klamath-Lake District  
 Livin' on a Prayer Timber Sale  
 T35S, R13E, Portions of  
 Section 19, T35S, R14E, Portions  
 of Section 19, W.M.  
 Klamath County, Oregon  
 Approximately 221 acres





**FY 16**  
 Klamath-Lake District  
 Rough Diamond Timber Sale  
 T28S, R7E, Section 3, W.M.  
 Klamath County, Oregon  
 Approximately 642 acres



-  Rough Diamond Timber Sale
-  Exclusion
-  State Highway
-  Unsurfaced Road

# Appendix C

---

## **Consultations with Other State Agencies**

This appendix summarizes the results of consultations with the Oregon Department Of Fish and Wildlife and the Oregon Department of Transportation.

- No written comments from ODFW have been received.
- Archaeologists from the Oregon Department of Transportation (ODOT) have reviewed the proposed timber harvests, road construction and recreation projects to review potential impacts to cultural resources. ODOT identified cultural resources on the Buckeye, Bad Ham and Alter Eagle Timber Sales. All sites had been previously documented in the Cultural Resource Inventory of the Oregon Department of Forestry Eastern Region (2008). All sites will be reviewed on the ground during project layout.

# Appendix D

---

## **Public Involvement**

# Appendix E

---

## **Pre-Operations Reports**

Pre-Operations reports are available from the district upon request.