



Oregon

Kate Brown, Governor

Department of Forestry

Forest Grove District
801 Gales Creek Road
Forest Grove, OR 97116
(503) 357-2191
Fax (503) 357-4548

June 30, 2023



"STEWARDSHIP IN FORESTRY"

To: Don Everingham, Area Director
From: Mike Cafferata, Forest Grove District Forester
CC: Michael Wilson, State Forests Division Chief
Ron Zilli, State Forests Deputy Division Chief
Colleen Kiser, State Forests Planning Manager

Re: Information Item – Approved Annual Operations Plan for FY 2024

The FY 2024 State Forests Annual Operations Plan (AOP) for the Forest Grove District has been completed. During my review of this plan, I have found that it conforms to the Oregon Forest Practices Act and is consistent with the 2010 Northwest Oregon State Forest Management Plan, the 2023 Forest Grove District Implementation Plan (IP), and the FY 2024 State Forests budget instructions.

During its preparation, this plan was reviewed by technical specialists from within the department and biologists from the Oregon Department of Fish and Wildlife. Information on the consultations with other agencies can be found in Appendix C. The draft AOP also underwent a 45-day public comment period. All comments were carefully considered and incorporated where appropriate. All changes that have occurred since the public comment period ended are summarized in Appendix D of the AOP.

As prepared, this AOP consists of 46.9 MMBF of harvest volume. This volume will be achieved through 374 acres of partial cut harvest and 1,120 acres of regeneration harvest. There are 10 primary operations and 5 alternate operations within this plan. The operations are estimated to generate gross revenues of approximately \$21,842,945 and net revenues of \$18,897,885 (\$4,144,750 in Clatsop County, \$1,915,440 in Columbia County, \$7,654,845 in Tillamook County, and \$5,182,850 in Washington County). The volume is in alignment with the IP range of 43-47 MMBF.

Reforestation and young stand management activities and investments are aligned with FMP objectives and budget considerations. Recreation facilities and trails are managed and maintained for safety, positive experiences and protecting other resources like water quality and are consistent with the FY 2024 budget level.

Approval of this plan does not constitute final approval of individual project details. Individual operations are subject to additional review processes at the district and division staff level before implementation. The planned amount and location of all management activities are based on the latest site-specific assessments and estimates of operational, T&E surveys, and market variables. Management activity levels may be adjusted and modified to account for any significant changes to these variables. The alternate sales in this Annual Operations Plan may be used to replace the primary sales that cannot be completed as planned. Actual revenue realized from this AOP could change due to market fluctuations. Harvest operations and the associated project work provide an accurate picture of what will be designed and prepared for contract in FY 2024. Due to the time lag with contract duration, most of the actual harvest operations with associated revenues will not occur for a period of one to two years beyond the end of the fiscal year. Forest management activities such as reforestation and recreation projects will occur in FY 2024.

The official copy of this AOP will be on file at the district office. Additional copies are available at the State Forests Program office in Salem, and are also available on the ODF web site at:

<http://www.oregon.gov/ODF/Pages/Reports.aspx>

Approved:

A handwritten signature in black ink, appearing to read "Mike Cafferata", written over a horizontal line.

Mike Cafferata
Forest Grove District Forester

Forest Grove District 2024 ANNUAL OPERATIONS PLAN



FOREST GROVE DISTRICT

FISCAL YEAR 2024 ANNUAL

OPERATIONS PLAN

OVERVIEW

This plan describes the activities and outcomes that Oregonians can expect to see on the eastern side of the Tillamook State Forest for Fiscal Year 2024 (July 1, 2023 – June 30, 2024). The Tillamook State Forest is an actively managed forest, valued by many Oregonians for its mixture of environmental, economic, and social benefits. This plan supports this mixture and provides a balance of these benefits as required by Oregon Administrative Rule (OAR 629-035-0020). The agency strives to manage the forest sustainably, so that the benefits from the forest can be delivered into perpetuity. The forest harvesting is planned at a sustainable level; a level that our computer models suggest can be harvested year after year without reduction.

Forest habitat is expected to develop so the forest has a mixture of habitat types for all of Oregon's native wildlife. Recreational opportunities are diverse and high quality, allowing for off-highway vehicles, bicycling, hiking, hunting, horseback riding, and more, striving to minimize user and environmental conflicts in the context of a working forest.

Managing a public forest has its challenges. In addition to the challenges of providing the opportunities described above, the forest is expected to be financially self-supporting. About two-thirds of the revenues from state forest timber sales go to local counties and other taxing districts, including schools. Oregon Department of Forestry (ODF) uses the remaining third of the revenue to manage the forests and keep them healthy, through activities including fire protection, tree planting, thinning, research and monitoring, recreation services, road maintenance and stream habitat improvement. ODF is striving to continue to provide the current opportunities and are considering a few opportunities for change.

Every year in the Forest, agency staff learn new things and find new challenges and opportunities. In preparing this plan, the agency has consulted with ODF's wildlife biologists, aquatic specialist, archaeologist, geotechnical engineer, road engineers well as fish and wildlife biologists from the Oregon Department of Fish and Wildlife. The plan has undergone a 45-day public comment period. The operations were shared with the nine federally recognized Tribes in Oregon.

This annual operations plan has been reviewed by the Forest Trust Land Advisory Committee (representing the counties that deeded land to ODF), the State Forests Advisory Committee (composed of Oregonians representing many interests), a variety of interest groups, as well as Oregonians in general.

The activities shown in the Summary Document and appendixes are estimates based on plans, information, and conditions as known at this point in time. The type, amount, and specific activities will be further adjusted based on field work conducted and on updated assessments that occur during the 2024 fiscal year.

A short summary of activities planned for the coming year:

- Planting approximately 665,000 trees on 1,673 acres. Conducting vegetation management activities on 2,423 acres and animal management activities on an additional 1,884 acres to ensure the survival and growth of these plantations.
- Conducting surveys for northern spotted owls and marbled murrelets covering the majority of the district and surveying approximately 5 miles of streams for the presence of fish habitat.
- Protecting streams and water resources through a series of buffers and seasonal restrictions.
- Habitat development projects such as creating snags by removing the tops, retaining green trees in clearcut areas, and leaving down wood, all for wildlife benefits in harvest areas and future forests.
- Maintaining approximately 38 miles of road and improving approximately 26 miles of road to ensure ditch water is dispersed and filtered as much as possible, keeping runoff from entering streams. Constructing approximately 3.5 miles of new roads. These roads provide access to timber harvest as well as various recreational opportunities.
- Reviewing District roads to develop plans to block or vacate roads to help manage trash dumping and target shooting.
- Proposing to harvest approximately 46.9 million board feet of timber volume, through modified clearcuts, and partial cuts generating revenue of an estimated \$18,897,885 million net value.
- Operating and maintaining developed facilities in a safe, clean, and responsible manner.

- Providing a safe and clean environment for the myriad of dispersed activities that occur across the forest – hunting, camping, angling, sight-seeing, target shooting, swimming, mushroom picking, etc.
- Improving, maintaining, managing, and patrolling the 104 miles of motorized and 78 miles of non-motorized trails, striving to protect the trail investments, provide for visitor safety, address developing trail issues, and protect water quality.
- Facilitating the important volunteer network that supports Recreation management through the following volunteer programs:
 - Camp Hosts
 - Adopt a Trail
 - Forest Clean-ups
 - Trail Maintenance and Construction Work Parties
- Facilitating the pre-planned 12 to 16 organized motorized trail use events and writing and administering 2 to 4 special use permits for motorized and non-motorized trail use events.
- Evaluating new event proposals for fit with Recreation program and forest management goals and objectives.
- Providing a firewood cutting program and miscellaneous forest products permits (salal, mushrooms, etc.) as done in previous years.
- Supporting ongoing research on the district, in partnership with research cooperatives and universities.
- Managing public access during fire season to prevent catastrophic fires through the use of red emergency fire gates.
- Managing waste dumping, vandalism, and community safety through the use of yellow gates and temporary farm gates.

TABLES OF CONTENTS

Summary	3
INTRODUCTION	8
INTEGRATED FOREST MANAGEMENT OPERATIONS	9
Timber Harvest Operations	9
Overview of Timber Harvest Operations	9
Harvest Operations within Terrestrial Anchor Sites and Aquatic Anchors	11
Summary of Timber Harvest Operations by Basin	13
Forest Roads Management	17
Overview	17
Road Construction	18
Road Improvement	18
Work Order Contracts.....	18
Road Access Management.....	19
Hydrologic Connectivity	19
Road Maintenance.....	19
Management of Rock Source/Supply	20
Land Surveying	20
Young Stand Management	20
Site Preparation	21
Planting.....	22
Tree Protection.....	22
Vegetation Management – Release Treatments	22
Pre-Commercial Thinning.....	23
Pruning	23
Stocking Surveys	23

Invasive Species	24
Roadside Vegetation Management	24
Recreation Management	24
Overview of Recreation Management	24
Facilities (Campgrounds, Viewpoints, Trailheads, etc.).....	25
Motorized (Off-Highway Vehicle) Trails	26
Non-motorized Trails	26
Trail Maintenance (Off-Highway Vehicle and Non-motorized).....	28
Timber Sale and Recreation Resource Interactions.....	28
Volunteer Program and Partnerships	29
Event Management	29
Grants	30
Target Shooting	30
Other Integrated Forest Management Projects	30
Aquatic & Riparian Management	30
Land Exchange	31
Law Enforcement and Public Safety.....	32
Firewood Cutting Program	32
Non-Timber Forest Products.....	32
Planning.....	32
Archaeological, Historical and Cultural Resources	32
Forest Inventory	33
Wildlife Surveys.....	33
Research and Monitoring	34
Recreation, Education, and Interpretation Program Planning – Program Wide	34
Other Planning Operations.....	34
Public Information and Education	35

Administration 35

APPENDICES 38

Appendix A – Summary Tables 39

Appendix B – Vicinity Maps 48

Appendix C – Consultations with Other State Agencies 51

Appendix D – Public Comment Process 52

Appendix E – Pre-Operations Reports 54

Appendix F – Forest Land Management Classification 55

Appendix G – Landscape Design..... 56

INTRODUCTION

This annual operations plan outlines planned activities for state-owned forestland managed by the Forest Grove District for Fiscal Year 2024, which begins July 1, 2023 and ends June 30, 2024. This document describes how the activities and projects undertaken by the district will achieve the goals, strategies, and objectives of the NW Oregon State Forests Management Plan, draft Habitat Conservation Plan, Tillamook State Forest Recreation Action Plan, and the Forest Grove District 2023 Implementation Plan. Please refer to the district Implementation Plan for more specific information on physical characteristics and other district resource information.

The Annual Operations Plan document is divided into five major categories: Integrated Forest Management, Planning and Information Systems, Public Information and Education, Administration, and Appendices. A short summary of proposed activities is listed within this introduction. In addition to describing forest management activities for Fiscal Year 2024, Appendix F describes any modifications to the Forest Land Management Classification System. Appendix G describes any modifications to the Forest Grove District Landscape Design. *

The proposed harvest operations and activities are planned to be designed, engineered, and submitted for processing during the Fiscal Year 2024 time period. Actual on-the-ground operations will likely not occur during Fiscal Year 2024 due to the time-lag associated with contract duration, which could be one to three years after auction. In contrast, reforestation, young stand management, recreation management, and planning activities will be carried out during Fiscal Year 2024.

A 45-day public comment period was held from April 25, 2023 through June 8, 2023. The District Forester has reviewed all comments received before approving this plan.

Accomplishments of forest management activities which occurred under previous Annual Operations Plans can be found in several reports, including the *State Forester's Annual Report for the Association of Oregon Counties* and the *Common School Forest Lands Annual Report*. These reports are available through the local district office or online.**

*Minor/major modifications and the procedures for making these changes are described in Forest Grove District Implementation Plan.

**The State Forests' individual district annual reports are available on the Oregon Department of Forestry website under "Reports." You can access here: <http://www.oregon.gov/ODF/Pages/Reports.aspx>

INTEGRATED FOREST MANAGEMENT OPERATIONS

Timber Harvest Operations

Overview of Timber Harvest Operations

All of the Primary and Alternate harvest operations and many of the other forest management activities have been reviewed by ODF’s wildlife biologists, aquatic specialist, archaeologist, geotechnical engineer, road engineer, and planning manager, as well as fish and wildlife biologists from the Oregon Department of Fish and Wildlife. All of the operations will be reviewed against the State Historic Preservation Office and General Land Office databases for potential impact to cultural resources. Occasionally, operations may contain a resource or activity where review with another state agency, such as the Department of Agriculture is warranted. Written comments from the external resource specialists and the resolution of those comments can be found in Appendix C.

The Fiscal Year 2024 Annual Operations Plan is estimated to produce 46.9 million board feet in volume, generate gross revenues of approximately \$21,842,945 and net revenues of \$18,897,885. The volume objective is within the 43-47 million board feet range outlined in the Forest Grove District’s 2023 Implementation Plan. However, some events may result in an Annual Operations Plan volume that is outside the Annual Harvest Objective range. These events may consist of, but are not limited to, storm damage, insect and/or disease outbreaks, prepared timber cruise results versus Annual Operations Plan volume estimates, timber market conditions or other significant events. Alternate timber sales included in the Annual Operations Plan may be sold as primary operations in response to any of these circumstances.

Additional operations may produce timber volume for the district during the 2024 fiscal year but are not included in this annual operations plan. These are generally small areas, produce little volume, and/or are time sensitive in nature. These sales do not require significant effort to develop and execute and will comply with all policies, the district Implementation Plan, and the NW Oregon State Forests Management Plan. Examples of these sales include salvage, pulp sales, removal of hazard trees, pole sales, etc.

Table 1. Volume Harvest Objective of Annual Operations Plan Harvest Compared to Implementation Plan Annual Objective. Volume is Million Board Feet.

Harvest Objectives	2023 Implementation Plan Harvest Ranges		Fiscal Year 2024 Annual Operations Plan
	Low	High	
Forest Grove	43	47	46.9

Table 2. Summary of Primary Timber Harvest Operations Inside and Outside of Habitat Conservation Areas. All values are in net acres.

2024 Annual Operations Plan				
	Harvest Outside of Habitat Conservation Areas		Harvest Inside of Habitat Conservation Areas	
	Partial Cut	Modified Clearcut	Partial Cut	Modified Clearcut
Forest Grove	374	1,120	39	0

Harvest Outside of Habitat Conservation Areas

The 1,120 acres of regeneration harvest planned for Fiscal Year 2024 represents approximately one percent of the district. All of the regeneration harvest acres will be designed as modified clearcuts. There is one first entry moderate partial cut in young stands to help improve the growing conditions within the sale.

Harvest Inside of Habitat Conservation Areas

The 39 acres of partial cut harvest is designed with the goal to thin out the dense trees allowing more light to reach the forest floor. This will allow increased understory development and improve the layering of structure within the stand. Prescriptions may incorporate a mix of gap-cuts, areas of untreated stands, and variable density thinning prescriptions. Minor species will be evaluated to reserve based on the composition of the stand and the amount of diversity present. Residual tree selection will emphasize preserving the trees of good form and vigor with the largest diameter and height. These prescriptions will be developed in consultation with ODF biologists.

Refer to the attached Forest Grove District Financial Summary Table (Appendix A, Table A-1) and vicinity map (Appendix B) for more detail on expected outputs from planned timber sales.

Overview of Structural Components

The guidelines for managing structural habitat components listed under Landscape Management Strategy 3 in the NW Oregon State Forests Management Plan (pg. 4-52), will be followed for the Fiscal Year 2024 Annual Operations Plan. Structural components may be retained at higher levels in some units and at lower levels in other units. The intent is to achieve the targets outlined in the NW Oregon State Forests Management Plan strategies in a given annual operations plan.

The green tree retention target for regeneration harvest units is an average of five trees per acre in the NW Oregon State Forests Management Plan. Green tree arrangements for this Annual Operations Plan may include scattered individual trees, clumps of trees, and trees concentrated in and adjacent to riparian management areas, inner gorge areas or headwalls. The final decision on the location and arrangement of the green trees is made while the sale is being laid out to incorporate information on potential minor tree species, unique stand features, steep slopes, visual considerations, reforestation considerations, etc. To promote diversity on the landscape a variety of green tree placement strategies will be used.

The NW Oregon State Forests Management Plan strategy for hard snags is to manage for at least two per acre on average across the landscape. The NW Oregon State Forests Management Plan strategy for Down Woody Debris is to retain an average of 600 to 900 cubic feet of hard conifer logs (class 1 & 2) per acre during regeneration harvest. Strategies for retaining snags and down wood are determined using a current condition assessment from forest inventory data or timber cruising data. The need for snag creation in each unit is evaluated based on cruise or inventory information that documents snags in decay class 1 and 2 in the sale and surrounding landscape. Units with less than 2 hard snags per acre will be evaluated and an appropriate snag prescription will be developed as needed. Down Wood will continue to be created through bucking practices, leaving felled snags in the unit and tops on ground yarding areas.

The wind events of December 2006, November 2007, December 2007, and the snow/ice event of January 2017 made significant contributions to snag and down woody debris levels despite the salvage of some large concentrations of blow down. This in turn led to scattered bark beetle outbreaks resulting in additional tree mortality during 2009. The majority of beetle caused mortality is located within the McGregor, Wheeler, and Upper Salmonberry Basins. Minor amounts were observed in Larch Mtn., Gales Creek, and Roger's Basins. Based on these observations, snag creation may only be required on planned sales in the Sunday Creek Basin, Wilark Basin, Scoggins Basin, and portions of Gales Creek and Roger's Basins.

In addition to the leave tree strategies within the NW Oregon State Forests Management Plan all timber sales within Fiscal Year 2024 will also abide by the green tree retention strategies of the Draft Habitat Conservation Plan. Two trees per acre will be retained within any forest stand harvested using regeneration harvest techniques. Trees selected for retention will be outside of Riparian Conservation Areas and will be assessed during each final harvest so that selected trees will not be removed in subsequent rotations and will contribute to long-term recruitment of large diameter snags and downed wood. Overlaps may occur with the green tree retention strategies of the NW Oregon State Forests Management Plan. Leave tree configuration will be determined during sale layout to ensure compliance with NW Oregon State Forests Management Plan and Habitat Conservation Plan strategies.

Harvest Operations within Terrestrial Anchor Sites and Aquatic Anchors

The District's 2023 Implementation Plan applied the State Forests' Species of Concern Strategies that specifically identifies fish and wildlife species of concern on the Tillamook State Forest. Two of these strategies are Terrestrial Anchor Sites and Aquatic Anchor sites.

- Terrestrial Anchor Sites areas are intended to benefit terrestrial wildlife species of concern, especially those associated with older forest or interior habitat conditions, sensitive to forest fragmentation, or do not readily disperse across younger forest conditions. Management within Terrestrial Anchor Sites is intended to be limited, to emulate natural small-scale disturbance patterns, and to minimize short-term negative impacts to habitat. All areas that were designated as Terrestrial Anchor Sites were designated for the development of complex structure in the Landscape Design.
- Aquatic Anchor sites are watersheds where salmon and aquatic amphibian conservation is of concern. Riparian management strategies beyond those described in the NW Oregon State Forests Management Plan will be applied within Aquatic Anchors. In addition, areas designated for the development of complex structure in the

Landscape Design are clustered around streams important to fish in the Aquatic Anchors.

The Species of Concern Strategies provide long term goals for Terrestrial Anchor Sites and Aquatic Anchors. The management activities within those areas are designed to achieve those goals. These strategies have not identified specific limits to the total area that can be harvested within these areas; however, the district and resource specialist will be tracking the harvest trends within these areas to ensure the harvest prescriptions and rate is consistent with the goals of these strategies.

Terrestrial Anchor Sites

Since the adoption of the Terrestrial Anchor Sites in the July 2011, the district has been proceeding with operations in these areas. Great care has been given in selecting stands for harvest and developing prescriptions in these areas to ensure that these harvest activities achieve the goals of the Terrestrial Anchor Sites. These sales were reviewed with ODF and Oregon Department of Fish and Wildlife Resource Specialists. Table 3 shows there are no harvest planned within the Terrestrial Anchor Sites proposed in the 2024 Annual Operations Plan and also shows the cumulative operations in Terrestrial Anchor Sites since the strategy was adopted (Annual Operations Plans 2012 through 2024).

Table 3. Summary of Harvest Operations within Terrestrial Anchor Sites (Acres and Percent)

Acres within Terrestrial Anchor Sites	Current Annual Operations Plan (Fiscal Year 2024)		Cumulative Harvest (Since Fiscal Year 2012)	
	Modified Clearcut	Partial Cut	Modified Clearcut	Partial Cut
Terrestrial Anchor Site Basin				
South Fork Wilson (2,081 acres)	0	0	0	0
% of Acres	0%	0%	0%	0%
Upper Salmonberry (3,097 acres)	0	0	0	674
% of Acres	0%	0%	0%	21.8%
Wolf Creek (4,199 acres)	0	0	0	861
% of Acres	0%	0%	0%	20.5%
All Terrestrial Anchor Sites (9,377 acres)	0	0	0	1,535
% of Acres	0%	0%	0%	16.4%

Aquatic Anchors

The Aquatic Anchors became effective July 1, 2013 and replaced the Salmon Anchor Habitat Strategy that expired June 30, 2013. Increased water protection measures will be implemented on regeneration harvest operations planned within the Aquatic Anchors as specified in the Species of Concern strategy. Table 4 shows the current harvest and the cumulative total from Fiscal Year 2014.

Table 4. Summary of Harvest Operations within Aquatic Anchors (acres and percent)

Acreages	Current Annual Operations Plan (Fiscal Year 2024)		Cumulative Harvest (Since Fiscal Year 2014)	
	Modified Clearcut	Partial Cut	Modified Clearcut	Partial Cut
Aquatic Anchor Basins				
Ben Smith Creek (2,410 acres)	0	0	0	0
% of Acres	0%	0%	0%	0%
Devils Lake Fork Wilson River (6,132 acres)	0	0	792	118
% of Acres	0%	0%	12.9%	1.9%
Elkhorn Creek (1,049 acres)	0	0	187	0
% of Acres	0%	0%	17.8%	0%
Lousignont Creek/Upper Nehalem River (12,355 acres)	145	0	2,356	1,516
% of Acres	1.2%	0%	19.1%	12.3%
S. Fork Salmonberry River (5,659 acres)	0	0	103	579
% of Acres	0%	0%	1.8%	10.2%
Upper Rock Creek (3,295 acres)	0	0	144	84
% of Acres	0%	0%	4.4%	2.5%
All Aquatic Anchors (30,900 acres)	145	0	3,582	2,297
% of Acres	<0.1%	0%	11.0%	7.4%

Summary of Timber Harvest Operations by Basin

In the following section, the harvest operations planned for Fiscal Year 2024 will be summarized in the context of the eleven management basins on the Forest Grove District. Since the NW Oregon State Forests Management Plan strategies provide standards for structural components such as green trees, snags, down wood as well as riparian protection, these are not discussed in the summary. Road strategies and standards are discussed in the Forest Roads Management section. Additional information regarding the harvest operations may be found within Table A-2, the Forest Resources Summary in Appendix A.

Table 5. Summary of Timber Harvest Operations in each basin. All values are in net acres.

Basin	2024 Annual Operations Plan	
	Partial Cut	Modified Clearcut
Bell Mountain	238	0
Isolated Tracts	0	0
Gales Creek	136	0
Larch Mountain	0	0
McGregor	0	328
Rogers	0	206
Scoggins Creek	0	106
Sunday Creek	0	221
Upper Salmonberry	0	114
Wheeler	0	145
Wilark	0	0
Totals	374	1,120

Bell Mountain Basin

Bible Creek: This is a 4 unit first entry partial cut sale totaling 238 acres. The Douglas-fir and red alder stands within this sale are between 40 and 51 years old. The stands within the sale have a current condition of Understory with a Desired Future Condition of non-complex.

No new road construction is expected for harvest. Approximately 4.74 miles of road will be improved in conjunction with this sale.

Isolated Tracts Basin

No harvest operation is planned for this basin.

Gales Creek Basin

Skinny Kitty: This is a 3 unit first entry partial cut sale totaling 136 acres. The Douglas-fir and red alder stands within this sale are between 36 and 40 years old. The stands within the sale have a current condition of Understory with a Desired Future Condition of non-complex.

Approximately 0.71 miles of spur road will be constructed and 0.65 miles of spur road will be reconstructed to help facilitate the harvest of this sale. No road improvement is expected for harvest.

Unit 2 is within a Draft Habitat Conservation Area. The thinning prescription for this stand will be developed to create more complex structure and improve habitat.

Larch Mountain Basin

No harvest operation is planned for this basin.

McGregor Basin

Clear Connection: This is a 1 unit modified clearcut sale totaling 120 acres. The Douglas-fir and red alder stands within this sale are between 76 and 84 years old. The stands within the sale have a current condition of Understory with a Desired Future Condition of non-complex.

Approximately 0.27 miles of spur road will be constructed to help facilitate the harvest of this sale. Approximately 1.87 miles of road will be improved in conjunction with this sale.

Cry Wolf: This is a 2 unit modified clearcut sale totaling 110 acres. The mixed conifer within this sale are 65 and 85 years old. The stands within the sale have a current condition of Understory with a Desired Future Condition of non-complex.

Approximately 0.31 miles of spur road will be constructed to help facilitate the harvest of this sale. Approximately 1.64 miles of road will be improved in conjunction with this sale. Approximately 0.1 miles of existing spur road will be vacated in conjunction with this sale.

Rock Music (Alternate): This is a 1 unit modified clearcut sale totaling 111 acres. The mixed conifer stands within this sale are between 58 and 76 years old. The stands within the sale have a current condition of Understory with a Desired Future Condition of non-complex.

Approximately 0.69 miles of spur road will be constructed to help facilitate the harvest of this sale. Approximately 0.65 miles of road will be improved in conjunction with this sale.

Run Duo: This is a 2 unit modified clearcut sale totaling 98 acres. The mixed conifer stands within this sale are between 80 and 86 years old. The stands within the sale have a current condition of Understory and Closed Single Canopy with a Desired Future Condition of non-complex.

Approximately 0.09 miles of spur road will be constructed to help facilitate the harvest of this sale. Approximately 1.97 miles of road will be improved in conjunction with this sale.

Rogers Basin

NW Slope: This is a 3 unit modified clearcut sale totaling 206 acres. The Douglas-fir and red alder stands within this sale are between 63 and 76 years old. The stands within the sale have a current condition of Understory with a Desired Future Condition of non-complex.

Approximately 1.18 miles of spur road will be constructed to help facilitate the harvest of this sale. Approximately 7.47 miles of road will be improved in conjunction with this sale. Approximately 0.4 miles of existing spur roads will be blocked in conjunction with this sale.

Motorized trails exist within the sale boundary. The Marketing Unit and Roads Unit will work closely with the Recreation Unit to put provisions in place to minimize impact to the recreation trails and to mitigate public use related safety concerns.

Portions of this sale may be visible from Highway 6. This will be taken into account while determining green tree retention strategies.

Rodger Dodger (Alternate): This is a 1 unit modified clearcut sale totaling 106 acres. The Douglas-fir and red alder stands within this sale are between 65 and 68 years old. The majority of the stand has a current condition of Understory with 3 acres having a current condition of Layered. The Layered portion is included to create a logical operational timber sale boundary. The Desired Future Condition of the entire sale is non-complex.

No new road construction is expected for harvest. Approximately 1.58 miles of road will be improved in conjunction with this sale. Approximately 0.58 miles of existing in-sale spur roads will be blocked upon completion of harvest operations.

Motorized trails exist along the sale boundary. The Marketing Unit and Roads Unit will work closely with the Recreation Unit to put provisions in place to minimize impact to the recreation trails and to mitigate public use related safety concerns.

Portions of this sale may be visible from Highway 6. This will be taken into account while determining green tree retention strategies.

Saddle Time (Alternate): This is a 1 unit modified clearcut sale totaling 113 acres. The mixed conifer stands within this sale are between 66 and 73 years old. The majority of the stand has a current condition of Understory with 10 acres having a current condition of Layered. The Layered portion is included to create a logical operational timber sale boundary. The Desired Future Condition of the entire sale is non-complex.

Approximately 0.43 miles of spur road will be constructed to help facilitate the harvest of this sale. Approximately 1.47 miles of road will be improved in conjunction with this sale.

Motorized trails exist along the sale boundary. The Marketing Unit and Roads Unit will work closely with the Recreation Unit to put provisions in place to minimize impact to the recreation trails and to mitigate public use related safety concerns.

Scoggins Creek Basin

Trifecta: This is a 3 unit modified clearcut sale totaling 106 acres. The Douglas-fir and red alder stands within this sale are between 73 and 96 years old. The stands within the sale have a current condition of Understory with a Desired Future Condition of non-complex.

Approximately 0.26 miles of spur road will be constructed to help facilitate the harvest of this sale. Approximately 3.32 miles of road will be improved in conjunction with this sale.

Sunday Creek Basin

Sunday Best: This is a 3 unit modified clearcut sale totaling 221 acres. The Douglas-fir stands within this sale are between 61 and 73 years old. The stands within the sale have a current condition of Understory with a Desired Future Condition of non-complex.

Approximately 0.14 miles of new road construction is needed to help facilitate the harvest of this sale. In order to save on move-in costs, this road work will be completed with another timber sale prior to Sunday Best.

Sunday Prime (Alternate): This is a 1 unit modified clearcut sale totaling 105 acres. The mixed conifer stands within this sale are 68 years old. The stands within the sale have a current condition of Understory with a Desired Future Condition of non-complex.

No new road construction is expected for harvest. Approximately 6.33 miles of road will be improved in conjunction with this sale.

Upper Salmonberry Basin

CE Junction: This is a 1 unit modified clearcut sale totaling 114 acres. The Douglas-fir and red alder stands within this sale are 82 years old. The stands within the sale have a current condition of Understory with a Desired Future Condition of non-complex.

No new road construction is expected for harvest. Approximately 1.39 miles of road will be improved in conjunction with this sale.

Nine Iron (Alternate): This is a 1 unit modified clearcut sale totaling 85 acres. The Douglas-fir and red alder stands within this sale are 65 and 85 years old. The stands within the sale have a current condition of Understory with a Desired Future Condition of non-complex.

Approximately 0.15 miles of new road construction is needed to help facilitate the harvest of this sale. Approximately 1.28 miles of existing road requires improvement. In order to save on move-in costs, this road work will be completed with another timber sale prior to Nine Iron.

Wheeler Basin

Triple Crown: This is a 3 unit modified clearcut totaling 145 acres. The mixed conifer and red alder stands in Units 1 and 2 (totaling 136 acres) are 70 and 86 years old and the 9 acre stand in Unit 3 is 94 years old. The stands within Units 1 and 3 have a current condition of Understory. The majority of Unit 2 has a current condition of Understory with 4 acres having a current condition of Layered. The Layered portion is included to create a logical operational timber sale boundary. The Desired Future Condition of the entire sale is non-complex.

Approximately 0.06 miles of spur road will be constructed to help facilitate the harvest. Approximately 3.76 miles of road will be improved in conjunction with this sale.

This sale is located within the Lousignont Creek/ Upper Nehalem River Aquatic Anchor.

Wilark Basin

No harvest operation is planned for this basin.

Forest Roads Management

Overview

The State Forest Road network provides access for forest management activities, fire suppression, and recreation. Visions, guiding principles, and goals for managing the road

network are discussed in the Northwest Oregon State Forests Management Plan (April 2010) and the State Forest Roads Manual (September 2006). The State Forest Roads Manual also provides standards and guidance for all road management activities and definitions, road classifications and other terms.

Almost all of the roadwork in this Annual Operations Plan is related to constructing spur roads and for improving haul routes for the Fiscal Year 2024 timber sales. This section describes the types of road management activities that will occur in Fiscal Year 2024 and the attached Forest Roads Summary Table (Appendix A, Table A-3) describes the anticipated total amounts.

Road Construction

The District evaluates each timber sale and strives to build the minimum number of roads required, except where the District has identified road systems that can be moved away from existing streams to mitigate hydrological issues. This may result in more road miles, but relocating roads away from the stream network is beneficial for watershed processes. The District tries to limit the number of stream crossings where possible when building new roads. Where stream crossings are unavoidable, new and replacement stream crossings will be designed to meet National Oceanic and Atmospheric Administration Fisheries (2022) passage criteria to maintain passage for covered fish species where applicable and follow best management practices outlined in the State Forest Roads Manual. All planned road construction is reviewed by the geotechnical specialist to ensure that new roads are located in stable locations to provide the best protection to natural resources while meeting the objective of the road. Discussions are held regarding the long-term use of the road by district staff for reforestation and future management, and whether a road needs to be surfaced or if it can be left unsurfaced. Financial costs of the construction and long-term maintenance are considered as well as potential impact to sale operations, anticipated closures related to weather, and long-term impact to wildlife and recreation.

Road Improvement

Road improvement projects will use ODF road inventory protocols to assess existing road drainage, stability, surfacing and vegetation conditions, and to aid in the development of transportation system improvement plans. The majority of this improvement work will be performed on collector and spur roads and will consist of installing new cross drains and disconnect culverts, replacing culverts, ditchline improvements, and new surfacing.

Work Order Contracts

Road maintenance and improvement projects not associated with a timber sale will be primarily facilitated through Work Order Contracts. This process uses the same protocols and guidance outlined in the road improvement and maintenance sections but allows the department to be efficient in accomplishing this work and prepare for future projects. The work associated with these contracts can include bridge design, fish culvert installation, road brushing, road maintenance and repair, or repairing/replacing gates.

Other Planned Road Projects to be completed by Work Order Contract in the Fiscal Year 2024 Annual Operations Plan:

- Bridge Installation - Wildcatfish Crossing – Replace an existing fish culvert with a modular bridge.
- Construction Administration of the Wildcatfish Crossing – Engineer oversight, inspections and approval of the installation of the Wildcatfish Crossing.
- Rock Crushing Contract – Rock crushing and stockpile construction for Fiscal Year 2025 timber sales.
- Bridge Design - U-Falls Bridge Design – Design a replacement bridge due to aging infrastructure.
- Fish Passage Design - C-Line Fish Pipe Design – Design to replace two fish culverts with full fish passable structures.

Road Access Management

State Forests are managed to support public access while providing for community safety, environmental benefits, protection of state and private assets, and wildfire prevention. Following timber harvest, roads are evaluated for their public access benefits and costs. Some roads are closed and vacated to reduce the maintenance costs and to minimize impacts to the environment. These areas remain open for walk-in use. The Department retains the option of gating roads if vandalism, neighbor concerns, or excessive road damage from public use becomes a problem in particular areas. The public may still access these areas on foot, bicycle or horseback.

Hydrologic Connectivity

Hydrological connectivity surveys are performed on haul routes during sale layout. ODF prioritizes road improvement projects that address hydrologic connectivity and culvert replacements that are barriers to fish migration on active or planned haul routes and sites of opportunity near active or planned haul routes. Road maintenance investments are made to support forest operations, protect existing road infrastructure and water quality, and provide for safety improvements. ODF also closely monitors road conditions on active haul routes and performs additional patrols and assessments during and after inclement weather events. The District will continue conducting hydrologic connectivity surveys and mitigating items discovered during this process.

Road Maintenance

Roads will be maintained as necessary to protect water quality and the road system asset value. Road maintenance activities will follow the maintenance guidance in Chapter 7 of the Forest Roads Manual, Forest Practices rules, and Chapter 4 of the Draft Habitat Conservation Plan. Road maintenance is accomplished under timber sale contracts for roads used for hauling forest products, using the State Forests Road crew or work order contracts. Maintenance is focused on ensuring proper drainage to prevent sediment entering streams. Collector roads and roads in active sale areas need and get the most maintenance. District personnel respond to heavy storms and thaw periods by performing road inspections, additional maintenance, and where necessary, stopping heavy truck use during periods when roads cannot handle traffic without damage to water quality or the road asset.

Management of Rock Source/Supply

The District provides durable rock for in-sale spurs and haul routes, which allows for year-round harvest opportunities. Rock quarry development, rock crushing, and/or purchasing rock is necessary to provide sufficient quantities of the road rock for planned road construction, road improvement, and road maintenance activities.

Quarry developments are planned for the following operations; however, these plans are subject to change as timber sale project work is laid out:

- West Mac Quarry
- Wildcat Quarry
- Seven Cedars Quarry
- Backwoods Quarry
- Rock Creek Ridge Quarry

Annually, the District requires between 2,000 to 4,000 cubic yards of crushed rock stockpiles for appraised road maintenance work. The District will continue to explore new rock sources and further development of existing rock quarries in Fiscal Year 2024.

Land Surveying

Every year surveying needs are analyzed and planned to be kept at a minimum level while ensuring property lines and corners are clearly marked. Survey work may be accomplished through service contracts with licensed professional land surveyors, cost sharing with adjacent landowners or utilizing the licensed surveyor on staff with ODF. Land surveying may be necessary on the following sales:

- No surveys are needed.

Young Stand Management

The State Forest strategy is to use a range of silvicultural tools to establish and maintain diverse stands of well-adapted natural species throughout the landscape to meet the objectives and goals in the NW Oregon State Forests Management Plan and District Implementation Plan. These tools include site preparation, planting, tree protection, vegetation management, pre-commercial thinning, early commercial thinning and interplanting or replanting. Each practice must be considered and prescribed for individual stands on a site-specific basis.

This section describes the types of reforestation and young stand management activities that will occur in Fiscal Year 2024 and the attached Young Stand Management Table (Appendix A, Table A-4) describes the anticipated total amounts. The location and amount (acres) of these activities are estimates based on plans, information and conditions as known at this point in time. The type, amount and specific stand management prescriptions will be further adjusted based on when existing harvest units are completed and on updated assessments and surveys that will occur during and after the 2023 growing season.

Reforestation activities will be completed by using experienced contractors. A portion of the activities will be completed by utilizing crews from South Fork Camp. These crews work on activities such as tree protection, mechanical hand release, and noxious weed control.

The reorganization of the State Forest Districts leveling the workforce between districts created an opportunity for Forest Grove to take on an additional workload. The Forest Grove reforestation staff will be assisting with the management of 1,059 acres in the Tillamook District.

Seedlings / Nurseries: In order to meet the goals of the NW Oregon State Forests Management Plan, the State Forests Program requires tree seedlings that are physiologically healthy and best suited for the planting sites. A wide variety of seedlings are grown at forest nurseries throughout the Pacific Northwest to meet the reforestation needs. Seedlings are grown in three different stock types: 1) plug seedlings or one-year-old container grown seedlings, 2) plug ones which are grown one year in a container followed by a second year in a bare root bed, and 3) straight bare root seedlings grown from seed in a bare root bed and then transplanted to a lower stocking bare root bed. The budget accounts for a string of growing costs over several years rather than just those costs of the trees being grown and planted in the winter. The budget for seedlings includes portions of the costs for growing seedlings for three planting years. Additionally, there are costs associated with the seed that is used for growing the seedlings, estimated transportation costs and various costs associated with packaging and freezer and/or cooler storage. The individual species mixture and stock type used for a particular reforestation unit is determined after the final inventory from the forest nursery and varies by District.

Site Preparation

Site preparation is any planned measure to prepare a site to allow for favorable growing conditions for newly planted seedlings. More than one of these techniques may be used for any given site based on the attributes and reforestation prescription for the site. The three main site preparation techniques are mechanical, chemical and slash burning.

- 1) **Slash Burning:** Slash burning can be accomplished by broadcast burning the entire unit or burning piles that result from mechanical site preparation.
- 2) **Mechanical:** Mechanical site preparation is the use of mechanized equipment to rearrange or alter forest slash and/or disturb the forest surface layer and vegetation to create seedbeds or planting spots. Planting spots are created in a fairly even distribution. Dense slash concentrations created during timber harvest may be mechanically piled as part of the timber sale contract.
- 3) **Chemical:** Chemical site preparation involves the application of herbicides to control competing vegetation before planting or natural regeneration and during the early stages of seedling establishment. Applications occur by two primary methods: aerially by helicopter or ground based with the use of backpack application equipment. The objective is to control brush species to allow stand establishment and maintain 2-3 years free of significant competing vegetation. The actual site preparation plan will be prepared in late spring when harvest unit availability and brush development is better known.

Planting

Tree planting operations are conducted for various reasons. These include meeting Forest Practices Laws, quickly establishing a new stand of trees after timber harvesting, and increasing species diversity in the area and across the landscape. Planting is comprised of matching the appropriate species and stock type to the planting site. Forest health strategies are addressed on a site specific basis when the planting plan is developed. Site specific prescriptions consider target species, aspect, elevation, soil types, Swiss Needle Cast risk where applicable, *Phellinus weirii* (laminated root rot) presence, required stocking guidelines, natural advanced regeneration, and the desired future condition of the stand. To accomplish this, a mixture of species is planted to provide for a healthy, productive, and sustainable forest ecosystem over time and to be more resilient to climate change. The following are different types of planting.

- 1) Initial Planting (Regeneration harvest units): Planting activities establish the desired species and stocking levels to meet the goals in the NW Oregon State Forests Management Plan and Forest Practices Laws. Planted seedlings will be well suited and adapted to the reforestation site and where appropriate, a mixture of species may be planted to increase diversity on the landscape.
- 2) Interplanting: Interplanting may occur when stocking levels fall below or are at risk of falling below Forest Practices Act minimums. In certain instances, interplanting will occur to increase stocking on high quality sites to fully capture the site. In other areas, lower stocking will be acceptable, as it will provide high quality early seral habitat while still meeting Forest Practices Act requirements.
- 3) Underplanting: This type of planting is occasionally conducted after thinning in order to introduce both species diversity and an additional future layer of structure into a stand.
- 4) Natural Regeneration: Units or portions of units are assessed prior to planting. Natural regeneration is considered primarily in western hemlock stands that have been salvaged from wind storms, where small gaps and holes less than 2 acres have been created in partial cut units, and in unit rock outcrops or cliffs. Natural regeneration of red alder and other minor species is used to provide diversity in all harvest units.

Tree Protection

Animal damage on newly planted seedlings reduces their overall size, health and vigor. Extensive damage can lead to interplanting, may extend the time to achieve free to grow status as defined by the Forest Practices Act and prevent meeting NW Oregon State Forests Management Plan goals. Deer and elk, as well as mountain beaver, can heavily damage young seedlings. Various tree protection strategies are applied to help re-establish trees in areas with high concentrations of these species. Most commonly, various types of physical barriers (bud caps, vexar tubes, etc.) help prevent damage from big game. Direct control includes trapping mountain beaver in highly populated areas prior to planting helps prevent damage to newly planted trees.

Vegetation Management – Release Treatments

Vegetation management is done to reduce light, moisture or nutrient competition from undesirable vegetation in a young stand of trees to improve survival and growth. It can also be used to alter tree species composition under pressure from insect and disease and favor species

that are tolerant or resistant to the threat. Vegetation management may be required to meet forest practices reforestation stocking requirements, the NW Oregon State Forests Management Plan and the District Implementation Plan. There are two types of vegetation management, chemical and manual release treatments. They are described below.

Chemical Release: Chemical release treatments involve the application of herbicides to control undesirable vegetation. Typical application methods are broadcast, directed spray, and hack and squirt. Broadcast application treatments are sprayed over the top of seedlings and undesirable vegetation using either aerial or backpack methods. Directed spray applications are made with a backpack and target individual plants. This method is often used to remove invasive species such as Scotch broom from young stands. Hack and squirt involves basal or stem injection of chemicals. This method is typically applied to hardwoods as a way to release conifers from hardwood competition.

Manual Release: Manual release can include cutting down of noxious weeds or hardwoods. Hardwood release is used when ingrowth of hardwoods, mainly red alder in the northwest and madrone and tanoak in the southwest, threaten to change the stand from conifer dominate to hardwood dominate. In this treatment, the majority of hardwoods are removed using chainsaws leaving all of the conifer trees. This differs from Pre-Commercial Thinning (described below) in the fact that conifer spacing and species are not manipulated. While hardwoods are important on the landscape and some are retained, long-term conifer production is the goal for many stands across the district.

Pre-Commercial Thinning

Pre-Commercial Thinning is a silviculture activity used to manipulate the density, structure or species composition of overstocked young forest stands. Generally, the purpose of a Pre-Commercial Thinning operation is to release the biggest and best growing trees so they can maintain their growth. Pre-Commercial Thinning is normally conducted in a stand between the ages of 10 and 20 years old. In areas of disease such as Swiss Needle Cast or *Phellinus weirii*, Pre-Commercial Thinning can be used to favor species other than impacted Douglas-fir trees in the residual stand.

Pruning

No pruning activities are planned for this Annual Operations Plan beyond western white pine for disease prevention of blister rust. Approximately 35 acres are anticipated. This work will be accomplished by utilizing South Fork Camp crews.

Stocking Surveys

The Reforestation Unit has the responsibility of ensuring that the goals of the NW Oregon State Forests Management Plan are met. Stocking surveys is one tool to ensure the stands are on track for the desired future condition. The surveys are done in order to check initial plantation survival at a time when the seedlings are vulnerable and there is still time to remedy problems, by using interplanting and animal damage control measures as examples. In addition, stocking surveys are conducted in order to assess free-to-grow status and to get baseline data on the stand for future management planning, for example evaluating release treatments and pre-commercial thinning candidates.

Invasive Species

Most noxious weeds or invasive plants are found along roads and have spread into plantations. The main sources for the weed introduction into the forest are vehicle tires, equipment moved into and out of district, and where soil disturbance occurs. 100% weed-free grass seed and certified weed-free straw used for mulch is required for project work on roads. Equipment washing is required in timber sale contracts to prevent the introduction of weed seed from other sites. It is also required that weed-free hay is used for feeding stock on State Forest Lands.

Reforestation continues to work with Marketing, Forest Roads, and Recreation, Education and Interpretation Team personnel to identify appropriate steps that can be taken to prevent the introduction and spread of invasive plants. Knotweed, Scotch broom, and false brome are the primary species known to exist in the District. Active control measures are being planned and prioritized for roadside, in-unit, and trail treatment.

Roadside Vegetation Management

Reforestation works with the Forest Roads personnel on the management of vegetation alongside forest roads. Vegetation management protects the investment by preventing damage from unchecked vegetation growth, helps to maintain a safe driving environment by maintaining clear sight distance, controls noxious weeds, and reduces fire hazards. Roadside vegetation will be controlled manually, mechanically or chemically where necessary. The method used will depend on the characteristics of the vegetation and its location. During the spring of 2023, roadside vegetation surveys will be conducted to determine roadside chemical treatment needs for Fiscal Year 2024. The project will be done by utilizing experienced contractors.

Recreation Management

Overview of Recreation Management

Recreation use has been taking place on the Tillamook State Forest for more than 70 years and has been managed in varying degrees. Currently the direction for management of the Recreation Program flows from the NW Oregon State Forests Management Plan (2010).

Recreation use includes hunting, fishing, target shooting, off-highway vehicle riding, mountain biking, hiking, equestrian use, mushroom picking, sight-seeing, picnicking, boating, swimming, and camping. Recreation use takes place in developed sites and in dispersed sites across state forest land. Use levels for all activities are expected to increase.

Dispersed site activities are expected to continue in Fiscal Year 2024 and will require varying degrees of Recreation Program and district staff attention. Dispersed use sites will be monitored, maintained, and improved or closed as resources allow to meet safety, sanitation, and resource protection objectives.

The Fiscal Year 2024 plan focuses on maintaining current trails, facilities, and opportunities by maintaining the existing infrastructure, provide for public safety and sanitation, and mitigate damage to natural resources.

Due to facility and trail maintenance needs, winter weather limitations, timber sale activity, fire season restrictions, and staffing vacancies some project work from Fiscal Year 2023 will extend into Fiscal Year 2024.

Facilities (Campgrounds, Viewpoints, Trailheads, etc.)

The Recreation Program plans to operate and maintain the following developed facilities on the Forest Grove District:

- 5 campgrounds
- 2 day-use picnic areas
- 2 highway wayside interpretive sites
- 16 trailhead facilities
- 4 target shooting lanes

All developed facilities will be operated and maintained in good working order and will be kept clean and safe for public use. They will be managed to minimize user conflict and to avoid adversely impacting the resource.

Fiscal Year 2024 Facility projects on the Forest Grove District are identified and described in the following table (Table 6).

Table 6. Developed and Dispersed Facility Projects

Project Type	Project Name	Project Status	Work Resources	Project Description
Facility Infrastructure Replacement	Reehers Camp Kiosk Replacement	Ongoing- Approved in Fiscal Year 2023	Recreation Staff, Contractor	Replacement of existing Reehers Camp Kiosk.
Facility Maintenance	Rogers Camp	Ongoing- Approved in Fiscal Year 2023	District Road Crew and Off-Highway Vehicle Crew	Rocking and grading Rogers Camp Trailhead and Off-Highway Vehicle Staging Area
Planning	Information Board and Kiosk Replacements	Ongoing- Approved in Fiscal Year 2023	Recreation Staff, South Fork Adults In Custody Crew	Develop standard design of information boards and Kiosks at recreation sites consistent with state forest branding.
Planning	Site Sign Replacement	Ongoing- Approved in Fiscal Year 2023	Recreation Staff, South Fork Adults In Custody Crew	Develop standard design of site sign at recreation sites consistent with state forest branding.

Motorized (Off-Highway Vehicle) Trails

The Recreation Program will continue to place emphasis on trail system planning, maintenance, and upgrade of existing trails. Project work will continue to focus on upgrading and improving the designated off-highway vehicle trail network in an effort to better connect the trail system, protect forest resources, minimize conflict with other forest management activities, re-establish trails after timber harvest, move trail users off the mainline haul and public use roads, reduce trail congestion and the potential for conflict between trail users, improve user safety, improve maintenance efficiency, and reduce infrastructure investments and maintenance workload.

To support off-highway vehicle program management, ODF receives All-Terrain Vehicle Fund dollars from Oregon Parks and Recreation Department to support personnel and associated service and supply costs.

Fiscal Year 2024 motorized trail projects on the Forest Grove District are identified and described in the following table (Table 7).

Table 7. Motorized Trail Projects

Project Type	Project Name	Project Status	Work Resources	Project Description
Trail Infrastructure Replacement	Military Trail Bridge Replacement	Ongoing-Approved in Fiscal Year 2023	Off-Highway Vehicle Program Staff	Construction – Replace old trail bridge at existing location with culvert. Construction to occur in Fiscal Year 2024.

Non-motorized Trails

The Recreation Program will continue to place emphasis on trail system planning, maintenance, and upgrade of existing trails. The program will continue to place emphasis on improving trail system connectivity and diversity, reducing user conflict, addressing user safety, protecting resources and investment, improving sustainability, and reducing maintenance need.

Fiscal Year 2024 non-motorized trail projects on the Forest Grove District are identified and described in the following table (Table 8).

Table 8. Non-Motorized Trail Projects

Project Type	Project Name	Project Status	Work Resources	Project Description
Planning	Gravelle Brothers Trail Bridge 10 Replacement	Ongoing-Approved in Fiscal Year 2022	Recreation Staff, State Forest Resource Specialists	Planning and design for replacement of current trail bridge that has exceeded its lifespan and no longer meets ODF trail bridge standards.
Planning	Wilson River Trail Seasonal Bridge Replacement	Ongoing-approved in Fiscal Year 2023	Recreation Staff, State Forest Resource Specialists, Design Contractor	Planning – Completing bridge design for a year-round bridge across Elk Creek for the Wilson River Trail. Project work will include confirming location and length, as well as bridge type in coordination with the State Forest Engineer. Additional planning would be done for grant assistance to cover the estimated construction cost. Installation timing dependent on funding.
Planning	Wilson River Trail Segment D Bridge #1	Ongoing-approved in Fiscal Year 2023	Recreation Staff, State Forest Resource Specialists, Design Contractor	Planning – Completing bridge design for trail bridge #1 along the Wilson River Trail Segment D. Project work will include confirming location and length, as well as bridge type in coordination with the State Forest Engineer. Additional planning would be done for grant assistance to cover the estimated construction cost. Installation timing dependent on funding.
Trail Construction	Wilson River Trail Segment D	Approved in Fiscal Year 2022	Recreation Staff, Contractor	Total project length is 6.2 miles. Construction of 4 miles expected in Fiscal Year 2024 and may carry into Fiscal Year 2025. Work to be completed by contractor.
Planning	Trail Signage Replacement	Ongoing-Approved in Fiscal Year 2023	Recreation Staff	Develop standard design of trail signage consistent with state forest branding.
Planning	Trail Inventory and Assessment	Fiscal Year 2024	Recreation Staff	Inventory and assessment of non-motorized trails in the Forest Grove District.

Trail Maintenance (Off-Highway Vehicle and Non-motorized)

Maintenance of existing trails remains the Recreation programs highest trail program priority. Trails will be maintained as necessary to protect investment, address developing resource and safety issues, and to protect water quality.

Maintenance needs vary year to year based on factors such as volume of use and seasonal weather conditions. The recreation program has a goal of performing maintenance on 1/3 of the trail system annually to meet our trail management objectives.

Trail maintenance activity includes the completion of trail condition inspections on all trails, development of maintenance plans, prioritization of maintenance need and completion of maintenance work identified. Standard trail maintenance work may include cleaning water bars and rolling dips, cleaning out culverts, trail tread work, cleaning trail bridges, clearing downed trees, brushing, sign maintenance, and trail infrastructure repair.

Heavy trail maintenance work which results from winter storms includes repairing trail bridges, re-establishing trail tread in slide or washout areas, rebuilding stream ford crossings, clearing and logout work associated with heavy concentrations of downed trees, and rerouting trails due to slides, washouts, or safety issues. Heavy trail maintenance work will be incorporated into trail maintenance plans and conducted as needed.

Trail condition inspections will be conducted on all trail miles on the Forest Grove District (104 miles off-highway vehicle and 78 miles non-motorized). Standard trail maintenance work is planned to be completed on 35 miles of off-highway vehicle trail and 26 miles of non-motorized trail on the Forest Grove District in Fiscal Year 2024.

Recreation Program staff will work with the state forest engineer to conduct trail bridge inspections that will help inform trail bridge maintenance needs.

Timber Sale and Recreation Resource Interactions

As a working forest it is inevitable that as we plan future timber harvests there is interaction with our growing recreational infrastructure. The Marketing staff and Recreation staff have devoted a large amount of time and effort to identify each of these sale and trail interactions and identify what actions could be taken to protect the trails or in instances where the trail did not meet our sustainability or resource protection goals to vacate it.

Details have been added to Pre-Operation reports for each timber sale that has nearby recreational resources to detail what actions are planned for the recreational resource.

Timber sales may extend for several years depending on the flow of operations. The Fiscal Year shown in the table below are the year that the timber sales were approved. Trail assessments will occur as operations are completed.

Table 9. Timber Sale & Trail Interactions

Project Type	Timber Sale Name	Trail Name	Timber Sale Fiscal Year	Project Description
Planning	NW Slope	- Bales Creek - Log Jam - Tomans Knob	FY24	Trails within the identified timber sales will be assessed upon completion of logging operations to determine if trails are able to be re-opened or if additional trail planning efforts are required. See timber sale pre-op reports for additional information
Planning	Rodger Dodger (ALT)	- Bates Road Trail	FY24	
Planning	Saddle Time (ALT)	- Cedar Tree	FY24	

Volunteer Program and Partnerships

Volunteers contribute labor, supplies, and expertise to the Recreation, Education, and Interpretation Program. Volunteers have partnered with ODF to construct new trails, maintain infrastructure, and preserve natural resources.

Volunteer activities include:

- Camp Host Program at Gales Creek, Reehers Camp, & Browns Camp Campgrounds
- Trail Maintenance and Construction Work Parties
- Adopt a Trail

In Fiscal Year 2024, activities associated with the volunteer program will include the recruitment, selection, and management of campground hosts; planning and management of trail maintenance, trail development, and special volunteer projects; and facilitation of Adopt a Trail program activities.

The Recreation program continues to partner with local recreation providers and volunteers. The Program will continue to look for opportunities to develop new partnerships and to enhance existing partnerships that will increase our collective capacity to meet program and project goals and objectives.

Event Management

Recreation staff will review and/or administer permits for 15 motorized events on the Tillamook State Forest. Events include motorcycle races, four-wheel drive events, dual sport events, and observed motorcycle trials.

Recreation and District staff will process and administer a limited number of permits for recreation related special uses of State Forest Lands. Special uses include commercial and non-commercial activities such as guide services, filming for advertisements, and trail running events. Special use permits for a 25K, 50k and marathon distance running event, a cross country running camp and hunting guides are planned for renewal in Fiscal Year 2024.

Grants

The program will be exploring applying for grants to support a variety of infrastructure projects across state forest land.

The Recreation Program will also be partnering with clubs and organizations that will be submitting grant applications to advance Recreation program work in NW Oregon Area.

Target Shooting

The Recreation Program, in collaboration with our partners in the target shooting community and Forest Grove District, will continue to work on implementing a target shooting management strategy that will work towards:

- Resolving the safety, sanitation, and environmental issues.
- Reducing the fire potential associated with target shooting.
- Developing public ownership and involvement in the development and implementation of the strategy.
- Maintaining safe and sustainable opportunities for recreational target shooting on the Tillamook State Forest.

Other Integrated Forest Management Projects

Aquatic & Riparian Management

All fish bearing streams found in State Forests are subject to the Management Standards for Aquatic and Riparian Areas as outlined in Appendix J found in the NW Oregon State Forests Management Plan (2010). An objective of State Forests' aquatic resources is to maintain, enhance, and restore quality fish habitat. This is achieved primarily through riparian buffer strategies specific to the aquatic resource characteristics such as presence of fish, size, and flow duration. The goal of all riparian management prescriptions is to obtain mature forest conditions (e.g., development of the natural community appropriate for that site) as expediently as possible. Aquatic Anchors have been established on watersheds in the District in which additional aquatic conservation measures are applied when regeneration harvesting.

Several strategies, described in the NW Oregon State Forests Management Plan, dictate protection measures designed to protect, maintain, and restore aquatic and riparian functions. These strategies are employed during harvest activities and include but are not limited to: leave trees adjacent to streams to protect stream temperature, provide nutrients, protect stream banks, and eventually provide wood to improve fish habitat. Best management practices for road construction, reconstruction, and maintenance minimize impacts to water quality.

In addition to the strategies detailed in the NW Oregon State Forests Management Plan all goals and strategies identified within the Draft Habitat Conservation Plan will be followed for Fiscal Year 2024 timber sales. These goals and strategies at times will overlap with those within the NW Oregon State Forests Management Plan. Final stream protection configurations will be determined during sale layout to ensure compliance with NW Oregon State Forests Management Plan and Habitat Conservation Plan strategies.

Threatened and Endangered Fish Species: Federally Threatened Salmon and Steelhead listed species with Critical Habitat Designations found within the District include Oregon Coast Coho Salmon, Upper Willamette River Chinook, and Upper Willamette River Steelhead.

Fish Distribution Surveys: Streams are classified in part as supporting fish (Type F) or not supporting fish (Type N). Riparian protection measures depend in part on the presence of fish. Many streams in the past have been surveyed with electro-fishing techniques that established the upper extent of fish use. However, many small streams have not yet been surveyed for fish presence. Streams needing classification in the Annual Operations Plan will be evaluated with a Physical Habitat Survey. The physical methodology was developed in conjunction with Oregon Department of Fish and Wildlife. The seasonal/perennial break in the streams will be evaluated during fish distribution surveys or during sale layout.

Restoration Goals and Identification Process: The overarching principles for fish habitat restoration are described in the NW Oregon State Forests Management Plan. There are stream enhancement opportunities identified in association with some sales in this Annual Operations Plan. Before determining if these potential projects will go into a full planning process, more field review is needed. The ODF Aquatic and Riparian Specialist will be consulted to help identify these candidates and may consult with Oregon Department of Fish and Wildlife fish biologists as needed.

Potential Stream Projects may be associated with the following Timber Sales:

- Cry Wolf
- Rock Music (Alternate)
- Run Duo

Other Planned Projects to improve aquatic areas within the Fiscal Year 2024 Annual Operations Plan:

- The replacement of a culvert on Wildcat Road (Wildcatfish Crossing) with a fish passable structure.
- Design C-Line Fish pipe replacements.
- University Falls Road bridge design (U-Fall's Bridge Design).
- Continue conducting hydrologic connectivity surveys and mitigating items discovered during this process.
- ODF will be partnering with the Upper Nehalem Watershed Council on two in-stream restoration projects on Lousignont Creek and Oak Ranch Creek the summer of 2024.

Restoration accomplishments are reported to Oregon Watershed Enhancement Board using the Oregon Watershed Restoration Inventory electronic filing process and reported by ODF annually in our report to the counties, board of forestry, and Department of State Lands.

Personnel on the Forest Grove District actively participate on the Upper Nehalem and the Tualatin River Watershed Councils.

Land Exchange

There are no active land exchange projects for this Annual Operations Plan.

Law Enforcement and Public Safety

ODF and the Tillamook County Sheriff's Office partner to maintain 3 full time forest deputies that are funded through all-terrain vehicle grants and ODF dollars. Recreation Program and District staff work in partnership with the forest deputies, the Tillamook County Sheriff's Office, and the District staff to facilitate the law enforcement activity across the Tillamook State Forest. This partnership is managed out of the Tillamook District office.

The forest deputies enforce state, federal, and forest recreation laws with an emphasis on all-terrain vehicle enforcement as they patrol the forest. Deputies also provide search and rescue services as needed. Fire laws pertinent to recreation use are enforced by the forest deputies, fire protection staff, and recreation staff. The forest deputies are essential to the success and overall management of the forest and their presence benefits all forest users.

Recreation program and District staff also work closely with the Washington County Sheriff's Office and Oregon State Patrol to support and facilitate law enforcement patrol, EMS, and search and rescue activities on the Tillamook State Forest in western Washington County.

Firewood Cutting Program

The primary objective of the District Firewood Cutting Program is to provide a source of firewood from State Forests to the public for personal use. The permit fee for personal firewood cutting is \$20 for two cords. Permits are issued for a period of three weeks. Historically firewood cutting has only been allowed outside the months of fire season.

Non-Timber Forest Products

Approximately 200 miscellaneous forest products permits are sold each year, mostly for salal and mushrooms, generating approximately \$20,000 in revenue.

Planning

Below are the significant district-level planning projects currently scheduled for commencement, completion, or both in Fiscal Year 2024.

Archaeological, Historical and Cultural Resources

All of the operations have been reviewed against the State Historic Preservation Office and General Land Office databases for potential impact to cultural resources. All of the operations have been shared with the nine federally recognized Tribes in Oregon.

The following timber sales were identified to have potential cultural or historic within or in proximity to the timber sale. During sale layout or administration if foresters find any potential evidence of cultural or historic items inadvertent discovery policies will be followed.

- CE Junction
- NW Slope Unit 3, NW Slope Culvert Replacement, and NW Slope Planned New Road Construction with Unit 2

- Rock Music (Alternate)
- Run Duo Unit 2
- Seven Cedars Quarry
- Skinny Kitty Units 1 and 3
- Sunday Prime (Alternate)
- Triple Crown Units 1, 2, and 3
- West C-Line Quarry

Forest Inventory

The State Forests Division is developing a lidar-based inventory that will replace Stand Level Inventory when completed. Lidar data was collected in 2020 for most ODF lands. Contract crews collected USFS Forest Inventory Analysis plots in 2021. The State Forest Division's Inventory Program is in the process of developing a raster-based estimate of forest biometrics across most of its ownership.

Wildlife Surveys

Northern Spotted Owl Surveys

For the Fiscal Year 2024 Annual Operations Plan, the District will continue the northern spotted owl survey program, in order to comply with federal and state Endangered Species Acts and to contribute to NW Oregon State Forests Management Plan goals. Survey requirements are determined in accordance with *ODF Northern Spotted Owl Operational Policies*, November 2017. If ODF obtains a Habitat Conservation Plan these policies will be re-evaluated.

Marbled Murrelet Surveys

In Fiscal Year 2024, the District will continue its marbled murrelet survey program in order to comply with Federal and State Endangered Species Acts and to contribute to NW Oregon State Forests Management Plan goals. Survey requirements are determined in accordance with ODF policy, guidance, and survey protocols. If ODF obtains a Habitat Conservation Plan these policies will be re-evaluated.

Threatened & Endangered Plants

The District will continue to screen harvest operations against the Oregon Biodiversity Information Center database and other known locations on the District to identify potential conflicts with plant species listed in the District Implementation Plan.

Species of Concern Wildlife

The District will continue to screen harvest operations against several wildlife databases to identify potential conflicts with wildlife of concern listed in the District Implementation Plan.

Research and Monitoring

The Forest Grove District will assist in a variety of research and monitoring projects in Fiscal Year 2024. Examples include:

- ◆ Red alder research areas.
- ◆ White Pine Blister Rust resistance studies.
- ◆ Oregon State University research areas (commercial thinning and wildlife studies).
- ◆ Commercial thinning and *Phellinus weirii* research areas.
- ◆ Commercial thinning and Swiss Needle Cast study areas.
- ◆ Riparian zone functions study areas.
- ◆ Green tree retention and seedling growth demonstration areas.
- ◆ Oregon State University Intensive Forest Management study.

Recreation, Education, and Interpretation Program Planning – Program Wide

In Fiscal Year 2024, Recreation, Education, and Interpretation program staff will be working on the following planning efforts.

- Support the State Forest Division’s NW Oregon State Forests Management Plan work, Habitat Conservation Plan work and District Annual Operations Plan development and implementation.
- Reservation Feasibility Study - Study the potential to move Browns Camp, Elk Creek, Stagecoach, Reehers Camp, and Gales Creek Campgrounds to a campsite reservation system for operations season. This project began in the 2023 operations season and will continue through the 2024 operations season.
- Recreation Standards Manual Development - Recreation, Education, and Interpretation to work with a consultant to develop a recreation program standards manual for recreation facility infrastructure (ex. fire pits, information boards, picnic tables, site signs, etc.). This project began in Fiscal Year 2023 and will continue in Fiscal Year 2024.
- Volunteer Program Manual - The Recreation, Education, and Interpretation program is undergoing an extensive re-evaluation of the volunteer program including onboarding, communication, and recruitment components. The deliverable of this process will be development of a volunteer manual that will be applied across all forests and programs. This project began in Fiscal Year 2023 and will continue in Fiscal Year 2024.

Other Planning Operations

In conjunction with the Recreation, Education, and Interpretation Team, the District will provide input and context to recreation planning. The district will also continue to participate in NW Oregon State Forests Management Plan and Habitat Conservation Plan reviews as needed.

Public Information and Education

Public Information and Involvement

Public information and involvement activities will include:

- Review and input regarding the Fiscal Year 2024 Annual Operations Plan.
- Volunteer engagement in trail work parties, Solve cleanups, adopt a trail, adopt a project, camp host programs, and other aspects of the recreation program.
- Off-Highway Vehicle Trail System Plan Development.
- Recreation project planning and design.
- Outreach to underserved or underrepresented groups.

Public Education

Recreation program staff will be involved in a variety of projects focused on informing and educating the public and interpreting the natural and cultural history of the Tillamook State Forest. Public Education activities will include:

- Maintenance of the ODF website and the Tillamook State Forest Blog.
- Development, management, and maintenance of recreation facility and forest information board messaging.
- Update of Recreation Program maps and brochures.
- Engagement with partners on their website presence.
- Review and support of responsible target shooting messaging on social media prepared and managed by our partners in the recreational target shooting community.
- Work in conjunction with the Tillamook Forests Center to capitalize on education and interpretation opportunities at their facilities and throughout the district. (The Tillamook Forest Center is located at mile post 22 on the Wilson River Highway and serves as a hub for public education, forest information, and information on recreational opportunities. The Tillamook Forest Center hosts more than 50,000 visitors per year. The Smith Homestead Day Use Area is located ½ mile east of the Tillamook Forest Center and hosts many school groups, family activities, and other visitors.)

Administration

During Fiscal Year 2024 the district will be transitioning to a new organization. There will be 17 permanent positions whose full-time function is to manage State Forest land on the District and 4 permanent positions who work part-time on management of State Forest land. In addition, the District will be supported by the NW Oregon Area Recreation, Education, and Interpretation Team and the NW Oregon Area Operations Team as well as the Division Planning and Coordination Team. All are responsible for implementing the Fiscal Year 2024 Annual Operations Plan. The district positions are divided into 4 functional groups: Forest Management, Forest Roads, Reforestation, and Administration. See the attached organizational chart.

There is a Marketing Unit which is responsible for all aspects of timber marketing. These activities include participating in the planning process, unit layout, assisting with road layout and design, timber cruising, timber sale appraisal, contract writing, contract administration, and coordinating with the Operations; Recreation, Education, and Interpretation; and Planning and Coordination Teams.

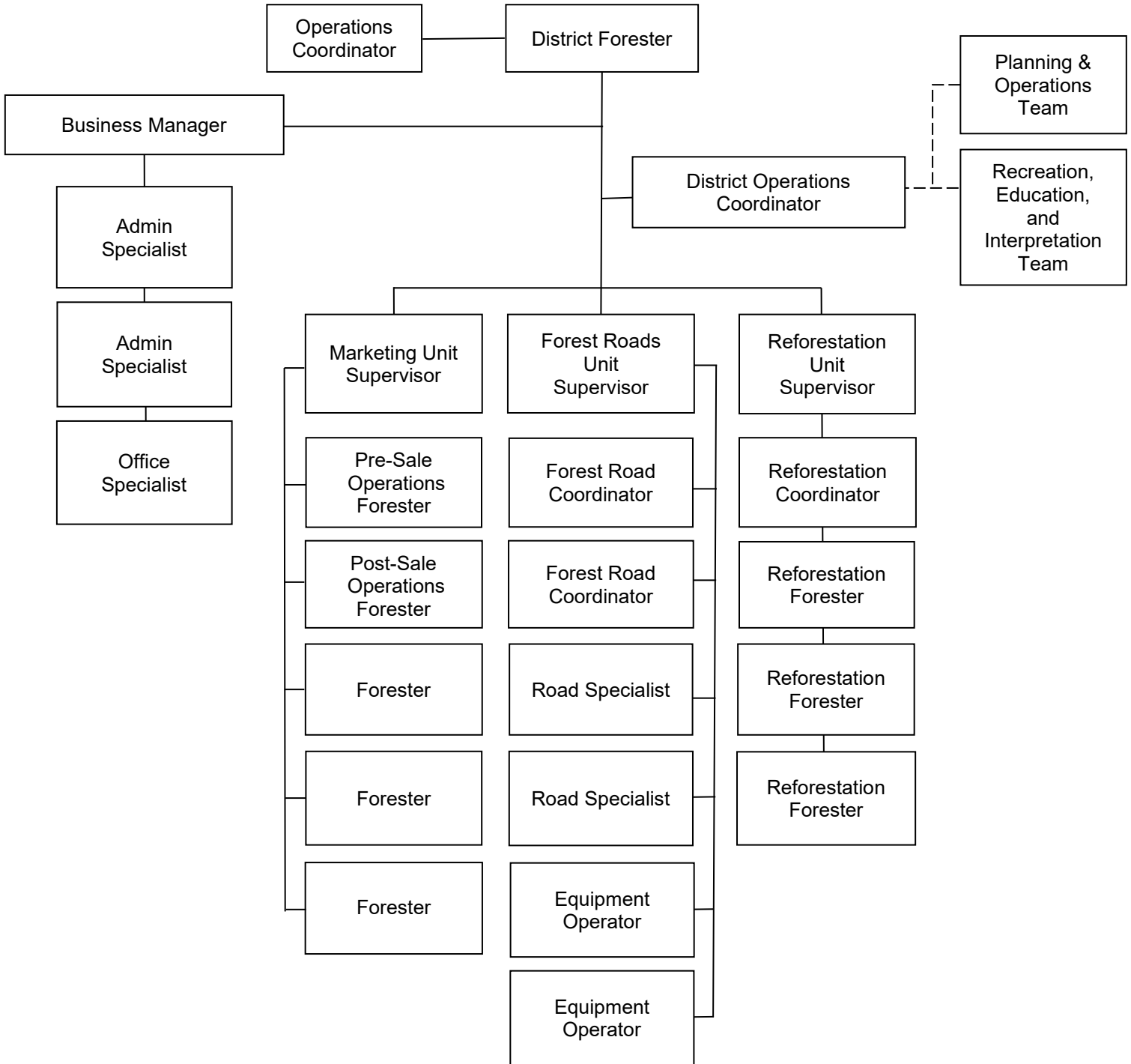
The Forest Roads Unit is responsible for all aspects of road management and land surveying. These activities include road design and layout, rock pit development, road maintenance, property line location, road construction and improvement appraisals, contract preparation, and road contract administration. The Forest Roads unit works with the Operations; Recreation, Education, and Interpretation; and Planning and Coordination Teams in developing the Annual Operations Plan.

The Reforestation Unit is responsible for all activities in forest plantations from the time the harvesting is complete until the new stand produces commercial timber. The activities of this unit include site preparation, trapping, tree planting, vegetation management, tree improvement, and pre-commercial thinning. The reforestation unit also coordinates South Fork crews and administers contracts to complete these tasks. The Reforestation Unit will coordinate with the Recreation, Education, and Interpretation Team as needed.

Administration consists of the District Forester, District Operations Coordinator, Office Manager, and Office Specialists. The District Forester and District Operations Coordinator provide policy direction, budget development, and oversight to the field units. The Office Manager, and Office Specialists provide clerical support to State Forest Management. These positions are responsible for initial public contact, distribution and filing of documents, and providing assistance at timber sale auctions. The Office Specialist is also responsible for issuing permits for firewood cutting, and special forest products.

Each of these units and teams are responsible for ensuring the management approaches, activities, and projects are designed to meet the goals, strategies, and objectives of the NW Oregon State Forests Management Plan, Implementation Plan, Annual Operations Plan, and Recreation Plan. The sales and projects are coordinated across the district and with the NW Oregon Area and Division Teams from the development of the Annual Operations Plan to the final sale administration for consistency within and between units to meet common goals.

Forest Grove District Organization Chart



APPENDICES

A. Summary Tables

1. Harvest Operations – Financial Summary
2. Harvest Operations – Forest Resource Summary
3. Forest Road Management Summary
4. Reforestation and Young Stand Management Summary
5. Recreation Site Management Summary
6. Recreation Trail Management Summary
7. Recreation Grant Management Summary

B. Vicinity Maps

1. Harvest Operations Vicinity Map
2. Recreation Projects Vicinity Map
3. Recreation Facilities Vicinity Map

C. Consultations with Other State Agencies

This appendix summarizes the results of consultations with the Oregon Department of Fish and Wildlife, Oregon Department of Transportation and other agencies as appropriate.

D. Public Comment Process

This appendix will describe the results of the public involvement process of this Annual Operations Plan.

E. Pre-Operations Reports

Pre-Operations Reports are available from the district upon request.

F. Forest Land Management Classification

G. Landscape Design

Appendix A – Summary Tables

- **Table A-1: Commercial Forest Management Operations - Financial Summary**
- **Table A-2: Commercial Forest Management Operations – Forest Resource Summary**
- **Table A-3: Forest Roads Summary**
- **Table A-4: Reforestation and Young Stand Management Summary**
- **Table A-5: Recreation Site Management – Financial Summary**
- **Table A-6: Recreation Trail Management – Financial Summary**
- **Table A-7: Recreation Grant Management – Financial Summary**

TIMBER HARVEST OPERATIONS - FINANCIAL SUMMARY

District: Forest Grove

Fiscal Year: 2024

Date: 06/20/2023

Annual Operations Plan Sale Name	Fund %		County	Sale Quarter	Net Acres		Volume (MMBF)		Total	Value		
	BOF	CSL			Partial Cut	Clearcut	Con- ifer	Hard- woods		Gross	Projects	Net
Bible Creek	100%		Tillamook	2	238		2.4		2.4	\$880,600	\$61,750	\$818,850
CE Junction	100%		Tillamook	3		114	4.0		4.0	\$2,134,650	\$49,800	\$2,084,850
Clear Connection	100%		Columbia	1		120	5.3		5.3	\$2,164,800	\$249,360	\$1,915,440
Cry Wolf	100%		Clatsop	3		110	4.6		4.6	\$2,286,900	\$158,640	\$2,128,260
NW Slope	100%		Tillamook	4		206	6.7		6.7	\$2,885,300	\$484,930	\$2,400,370
Run Duo	100%		Clatsop	4		98	4.5		4.5	\$2,236,410	\$219,920	\$2,016,490
Skinny Kitty	100%		Washington	3	136		1.4		1.4	\$544,000	\$45,300	\$498,700
Sunday Best	100%		Washington	1		221	8.4		8.4	\$4,157,010	\$0	\$4,157,010
Trifecta	100%		Washington	2		106	3.7		3.7	\$1,372,700	\$265,560	\$1,107,140
Triple Crown	100%		Tillamook	2		145	5.9		5.9	\$3,180,575	\$99,800	\$3,080,775

Sub-total:	374	1,120	46.9	0.0	46.9	\$21,842,945	\$1,635,060	\$20,207,885
Project Work Order Contracts Sub-total:	0	0	0.0	0.0	0.0		\$1,310,000	
Total:	374	1,120	46.9	0.0	46.9	\$21,842,945	\$2,945,060	\$18,897,885

Alternate Operations

Nine Iron	100%		Tillamook			85	2.7		2.7	\$1,169,600	\$0	\$1,169,600
Rock Music	100%		Clatsop			111	4.4		4.4	\$2,197,800	\$102,360	\$2,095,440
Rodger Dodger	100%		Tillamook			106	4.0		4.0	\$1,651,480	\$100,000	\$1,551,480
Saddle Time	100%		Tillamook			113	4.3		4.3	\$1,588,780	\$93,240	\$1,495,540
Sunday Prime	100%		Washington			105	4.6		4.6	\$2,286,900	\$339,960	\$1,946,940

Total:	0	520	20	0	20	8,894,560	635,560	8,259,000
---------------	---	-----	----	---	----	-----------	---------	-----------

PRIMARY HARVEST OPERATIONS - FOREST RESOURCE SUMMARY

District: Forest Grove

Fiscal Year 2024

Date: 06/20/2023

This table lists Forest Resources and other issues addressed within Pre-Operations Report due to their presence within or near harvest operations

Primary Harvest Operations	Unit (Optional)	Forest Health Issues ¹	Invasive Species	LYR/OFS Structures ²	Landscape Design LYR/OFS ³	Install/Replace Culverts on Fish Bearing / Perennial Streams	Harvesting within 100' of Fish Bearing Stream	Domestic Water Source	Potential Stream Habitat Improvement ⁴	Within Aquatic Anchor	Within Terrestrial Anchor	Operating within a NSO Provincial Circle (BA Required)	Operating within a MMMA (BA Required)	Murrelet Timber Sale Screening Process Required (MM Policy 2.27)	T&E Fish Adjacent to Harvest Unit / Haul Route ⁵	T&E Plants	Geotechnical Issues Needing Field Review	Recreation Sites	Cultural Resources	Scenic Resources	Other Resources or Issues
Bible Creek	1 - 4	-	x	-	-	-	-	-	-	-	-	-	-	-	x	-	-	x	-	-	-
CE Junction	1	-	x	-	-	-	-	-	-	-	-	-	-	-	x	-	x	-	x	-	-
Clear Connection	1	-	x	-	-	x	-	-	-	-	-	-	-	-	x	-	-	-	-	-	-
Cry Wolf	1, 2	-	x	-	-	-	-	-	x	-	-	-	-	-	x	-	x	-	-	-	-
NW Slope	1, 2, 3	-	x	-	-	x	-	-	-	-	-	-	-	-	x	-	x	x	x	x	-
Run Duo	1, 2	-	x	-	-	x	-	-	x	-	-	-	-	-	x	-	-	-	x	-	-
Skinny Kitty	1, 2, 3	-	x	-	-	-	-	x	-	-	-	-	-	-	x	-	-	-	x	-	-
Sunday Best	1, 2, 3	-	x	-	-	x	-	-	-	-	-	-	-	-	x	-	x	-	-	-	-
Trifecta	1, 2, 3	-	x	-	-	-	-	-	-	-	-	-	-	-	x	-	x	-	-	-	-
Triple Crown	1, 2, 3	-	x	x	-	-	-	-	-	x	-	-	-	-	x	-	x	-	x	-	-

ALTERNATE HARVEST OPERATIONS - FOREST RESOURCE SUMMARY

This table lists Forest Resources and other issues addressed within Pre-Operations Report due to their presence within or near harvest operations

Alternate Harvest Operations	Unit (Optional)	Forest Health Issues ¹	Invasive Species	LYR/OFS Structures ²	Landscape Design LYR/OFS ³	Install/Replace Culverts on Fish Bearing / Perennial Streams	Harvesting within 100' of Fish Bearing Stream	Domestic Water Source	Potential Stream Habitat Improvement ⁴	Within Aquatic Anchor	Within Terrestrial Anchor	Operating within a NSO Provincial Circle	Operating within a MMMA (BA Required)	Murrelet Timber Sale Screening Process Required (MM Policy 2.27)	T&E Fish Adjacent to Harvest Unit / Haul Route ⁵	T&E Plants	Geotechnical Issues Needing Field Review ⁶	Recreation Sites	Cultural Resources	Scenic Resources	Other Resources or Issues
Nine Iron	1	-	x	-	-	-	-	-	-	-	-	-	-	-	x	-	x	-	-	-	-
Rock Music	1	-	x	-	-	x	-	-	x	-	-	-	-	-	x	-	*	-	x	-	-
Rodger Dodger	1	-	x	x	-	x	-	-	-	-	-	-	-	-	x	-	*	x	-	x	-
Saddle Time	1	-	x	x	-	x	-	-	-	-	-	-	-	-	x	-	*	x	-	-	-
Sunday Prime	1	-	x	-	-	-	-	-	-	-	-	-	-	-	x	-	*	-	x	-	-

¹ A 'x' (in any column) indicates yes the resource or other issue occurs within or near the harvest operation and is addressed by the Pre-Operations Report

² A 'x' indicates the harvest operation contains stands that are currently in a Layered (LYR) or Older Forest Stand Structure (OFS)

³ A 'x' indicate that the operation contains areas that have been designated for the development of complex forest stands (LYR/OFS)

⁴ The final decision on these projects will occur during sale preparation and inconspultation with ODFW.

⁵ This table lists harvest operations (units or log haul routes) that are adjacent to streams that are known to contain T&E fish. The Pre-Operation Report identifies whether T&E fish are present in the basin.

⁶ An * indicates further Geotechnical review is required prior to approval of the Annual Operations Plan.

FOREST ROADS SUMMARY

District: Forest Grove

Fiscal Year: 2024

Date: 06/20/2023

Primary Operations	Construction		Improvement		Other Projects	Total Project Costs	Gross Value of Operation	Total Cost as a percent of Gross Value	Comments
	Miles	Cost	Miles	Cost					
Bible Creek	0.00	\$0	4.74	\$61,750	\$0	\$61,750	\$880,600	7.0%	
CE Junction	0.00	\$0	1.39	\$34,800	\$15,000	\$49,800	\$2,134,650	2.3%	
Clear Connection	0.27	\$32,400	1.87	\$201,960	\$15,000	\$249,360	\$2,164,800	11.5%	
Cry Wolf	0.31	\$37,200	1.64	\$121,440	\$0	\$158,640	\$2,286,900	6.9%	
NW Slope	1.18	\$145,730	7.47	\$329,200	\$10,000	\$484,930	\$2,885,300	16.8%	
Run Duo	0.09	\$10,800	1.97	\$189,120	\$20,000	\$219,920	\$2,236,410	9.8%	
Skinny Kitty	1.36	\$45,300	0.00	\$0	\$0	\$45,300	\$544,000	8.3%	
Sunday Best	0.00	\$0	0.00	\$0	\$0	\$0	\$4,157,010	0.0%	
Trifecta	0.26	\$26,520	3.32	\$239,040	\$0	\$265,560	\$1,372,700	19.3%	
Triple Crown	0.06	\$5,900	3.76	\$93,900	\$0	\$99,800	\$3,180,575	3.1%	
Sub-total	3.53	\$303,850	26.16	\$1,271,210	\$60,000	\$1,635,060	\$21,842,945	7.5%	
Sub-total Work Order Contracts (see below)	0.00	\$0	0.00	\$0	\$1,310,000	\$1,310,000			
Totals	3.53	\$303,850	26.16	\$1,271,210	\$1,370,000	\$2,945,060	\$21,842,945	13.5%	

Alternate Operations

Nine Iron	0.00	\$0	0.00	\$0	\$0	\$0	\$1,169,600	0.0%	
Rock Music	0.69	\$82,800	0.65	\$19,560	\$0	\$102,360	\$1,651,480	6.2%	
Rodger Dodger	0.00	\$0	1.58	\$94,200	\$5,800	\$100,000	\$2,197,800	4.6%	
Saddle Time	0.43	\$49,080	1.47	\$44,160	\$0	\$93,240	\$1,588,780	5.9%	
Sunday Prime	0.00	\$0	6.33	\$339,960	\$0	\$339,960	\$2,286,900	14.9%	
Total	1.12	\$131,880	10.03	\$497,880	\$5,800	\$635,560	\$8,894,560	7.1%	

Road Projects Not Associated with Harvest Operations in this Annual Operations Plan:	None
---	-------------

Road Projects to be Completed as a Work Order Contract

Operation	Construction		Improvement		Other Projects	Total Project Costs	Funding Source	Comments
	Miles	Cost	Miles	Cost				
Wildcatfish Crossing Install	0.00	\$0	0.00	\$0	\$550,000	\$550,000	FD	Replace existing fish culvert with a cost effective full
Construction Administration								
Wildcatfish Crossing	0.00	\$0	0.00	\$0	\$30,000	\$30,000	FD	Engineer oversite and approval
Rock Crushing Contract	0.00	\$0	0.00	\$0	\$650,000	\$650,000	FD	Rock crushing and stockpile construction for Fiscal
U-Falls Bridge Design	0.00	\$0	0.00	\$0	\$35,000	\$35,000	FD	Design to replace existing bridge
C-Line Fish Pipe Design	0.00	\$0	0.00	\$0	\$45,000	\$45,000	FD	Design to replace 2 existing culverts with full fish
Total	0.00	\$0	0.00	\$0	\$1,310,000	\$1,310,000		

* FDF - Forest Development Fund

REFORESTATION AND YOUNG STAND MANAGEMENT SUMMARY

District: Forest Grove

Fiscal Year: 2024

Date: 06/20/2023

Projects Conducted by ODF Staff or Contractors	Board of Forestry			Common School Forest Lands			District	Forest Grove
	Acres Planned	Average Cost*/Acre	BOF Cost	Acres Planned	Average Cost*/Acre	CSL Cost	Total Acres	Total Cost
Site Prep - Broadcast Burning	53	\$200.00	\$10,600.00			\$0.00	53	\$10,600.00
Site Prep - Piling Burning	900	\$26.28	\$23,652.00			\$0.00	900	\$23,652.00
Site Prep - Mechanical			\$0.00			\$0.00	0	\$0.00
Site Prep - Chemical - Aerial	999	\$95.00	\$94,905.00	70	\$95.00	\$6,650.00	1,069	\$101,555.00
Site Prep - Chemical - Ground	329	\$131.00	\$43,099.00			\$0.00	329	\$43,099.00
Initial Planting	1,328	\$233.07	\$309,516.96	70	\$233.07	\$16,314.90	1,398	\$325,831.86
Interplanting	275	\$183.07	\$50,344.25			\$0.00	275	\$50,344.25
Underplanting	0	\$0.00	\$0.00			\$0.00	0	\$0.00
Tree Protection - Barriers	633	\$132.54	\$83,897.82			\$0.00	633	\$83,897.82
Tree Protection - Direct Control	521	\$150.00	\$78,150.00			\$0.00	521	\$78,150.00
Release - Chemical - Aerial	0	\$0.00	\$0.00			\$0.00	0	\$0.00
Release - Chemical - Ground	275	\$121.00	\$33,275.00			\$0.00	275	\$33,275.00
Release - Manual	0	\$0.00	\$0.00			\$0.00	0	\$0.00
Precommercial Thinning	150	\$190.00	\$28,500.00			\$0.00	150	\$28,500.00
Pruning	0	\$0.00	\$0.00			\$0.00	0	\$0.00
*Stocking Surveys	3,000	\$0.00	\$0.00			\$0.00	3,000	\$0.00
Invasive Species	370	\$126.00	\$46,620.00			\$0.00	370	\$46,620.00
Roadside Vegetation Mngt	100	\$200.00	\$20,000.00			\$0.00	100	\$20,000.00
*Other	550	\$9.00	\$4,950.00			\$0.00	550	\$4,950.00
Totals	9,483	--	\$827,510.03	140	--	\$22,964.90	9,623	\$850,474.93

* Work to be completed by ODF staff; cost are for materials only

REFORESTATION AND YOUNG STAND MANAGEMENT SUMMARY

Projects Conducted by Adults in Custody	Board of Forestry			Common School Forest Lands			District	Forest Grove
	Acres Planned	Average Cost*/Acre	BOF Cost	Acres Planned	Average Cost*/Acre	CSL Cost	Total Acres	Total Cost
Site Prep - Broadcast Burning	53	\$0.00	\$0.00			\$0.00	53	\$0.00
Site Prep - Piling Burning	871	\$0.00	\$0.00			\$0.00	871	\$0.00
Site Prep - Mechanical	0	\$0.00	\$0.00			\$0.00	0	\$0.00
Initial Planting	0	\$0.00	\$0.00			\$0.00	0	\$0.00
Interplanting	0	\$0.00	\$0.00			\$0.00	0	\$0.00
Underplanting	0	\$0.00	\$0.00			\$0.00	0	\$0.00
Tree Protection - Barriers	324	\$126.50	\$40,986.00			\$0.00	324	\$40,986.00
Tree Protection - Direct Control	406	\$0.00	\$0.00			\$0.00	406	\$0.00
Release - Manual	300	\$0.00	\$0.00			\$0.00	300	\$0.00
Precommercial Thinning	0	\$0.00	\$0.00			\$0.00	0	\$0.00
Pruning	35	\$0.00	\$0.00			\$0.00	35	\$0.00
Invasive Species	150	\$0.00	\$0.00			\$0.00	150	\$0.00
Other	0	\$0.00	\$0.00			\$0.00	0	\$0.00
Totals	2,139	--	\$40,986.00	0	--	\$0.00	2,139	\$40,986.00

Grant Funded Activities	Board of Forestry			Common School Forest Lands			District	Forest Grove	Funding
Project	Acres Planned	Average Cost*/Acre	Cost	Acres Planned	Average Cost*/Acre	Cost	Total Acres	Total Cost	
			\$0.00			\$0.00	0	\$0.00	
			\$0.00			\$0.00	0	\$0.00	
			\$0.00			\$0.00	0	\$0.00	
			\$0.00			\$0.00	0	\$0.00	

RECREATION SITE MANAGEMENT SUMMARY

District: Forest Grove

Fiscal Year: 2024

Date : 06/20/2023

Project	ODF (\$)	Other (\$)	Total Costs	Comments
Campgrounds				
Reehers Camp Kiosk Replacement	\$ 25,000.00		\$25,000	Infrastructure Replacement- Kiosk Replacement
Trailheads				
Rogers Camp Trailhead		\$ 21,000	\$21,000	Facility Maintenance- Rock purchase
	Forest Development Fund Total		\$25,000	
		Other Total	\$21,000	
		TOTAL	\$46,000	

RECREATION TRAIL MANAGEMENT SUMMARY

District: Forest Grove

Fiscal Year: 2024

Date : 06/20/2023

Project	Construction Projects			Maintenance			Total Costs**	Comments
	Miles	ODF (\$)	Other (\$)	Miles	ODF (\$)	Other (\$)		
Non-Motorized								
Wilson River Trail Segment D	4.0	\$100,000	\$40,000				\$140,000	Contract construction of 4 miles of a 6.2 mile project. Labor cost included. Construction work may extend into Fiscal Year 2025.
Trail Maintenance				26.0			\$0	Maintenance work to be completed by ODF Staff, Adults In Custody Crews and/or Volunteers
Motorized								
Military Trail Bridge Replacement							\$0	Replace old trail bridge with culvert. Work to be completed by ODF Off-Highway Vehicle Staff.
Trail Maintenance				35			\$0	Maintenance work to be completed by ODF Off-Highway Vehicle Staff and/or Volunteers
							Forest Development Fund Total	\$100,000
							Other Total	\$40,000
							TOTAL	\$140,000

*A portion of the motorized recreation costs are funded through Oregon Parks and Recreation Department All Terrain Vehicle funds.

**Labor cost not reflected in totals unless indicated in comments.

RECREATION GRANT MANAGEMENT SUMMARY

District: Forest Grove

Fiscal Year: 2024

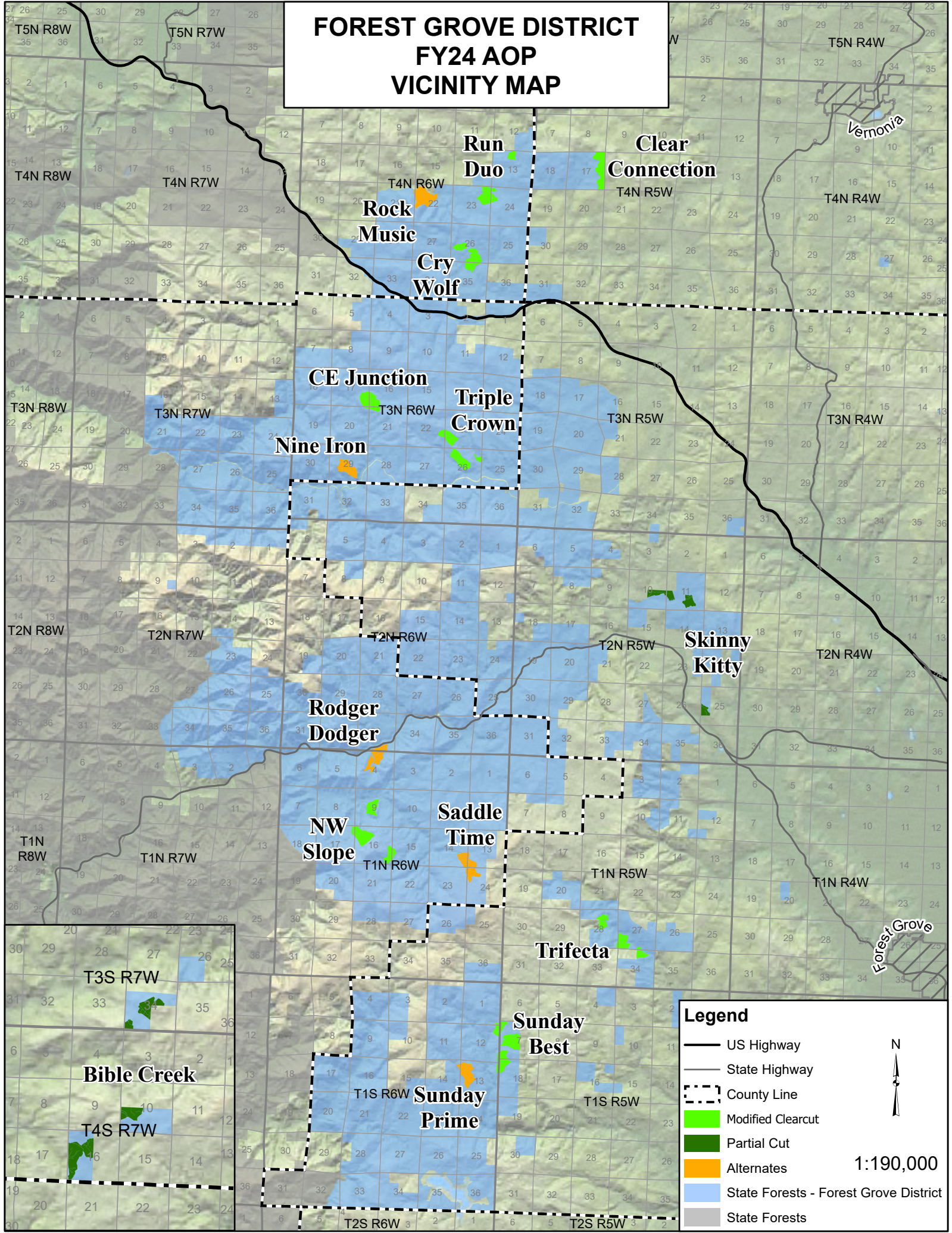
Date : 06/20/2023

Project Name	Grant	Status	Award Date (actual or anticipated)	Goals/Purpose	Funding		Project Total	Comments
					Grant (\$)	Match (\$)		
CXT Toilet Building Purchase and Installations	Land and Water Conservation Fund Grant	Application submittal expected October 2023	07/01/2024	Facility Improvement, Visitor Accomodation, and Resource Protection	\$100,000	\$100,000	\$200,000	Grant funding application submittal planned in Fiscal Year 2024 for replacement of toilet building at Spruce Run Campground and toilet building additions at Jones Creek Campground and Drift Creek Trailhead. Matching ODF funds will be a Fiscal Year 2025 expenditure.
Wilson River Trail Segment D	State Forests Trust of Oregon	Requesting	07/01/2023	Fund Construction costs	\$40,000	\$100,000	\$140,000	Funds will be used to hire contractor to complete construction work.
					Grants Total		\$140,000	
					Match Total		\$200,000	
					TOTAL		\$340,000	

Appendix B – Vicinity Maps

- **Harvest Operations Vicinity Map**
- **Recreation Facilities Vicinity Map**

FOREST GROVE DISTRICT FY24 AOP VICINITY MAP



Legend

- US Highway
- State Highway
- County Line
- Modified Clearcut
- Partial Cut
- Alternates
- State Forests - Forest Grove District
- State Forests



1:190,000

Run Duo

Clear Connection

Rock Music

Cry Wolf

CE Junction

Triple Crown

Nine Iron

Skinny Kitty

Rodger Dodger

NW Slope

Saddle Time

Trifecta

Sunday Best

Sunday Prime

Bible Creek

Vernonia

Forest Grove

T5N R8W T5N R7W T5N R4W

T4N R8W T4N R7W T4N R6W T4N R5W T4N R4W

T3N R8W T3N R7W T3N R6W T3N R5W T3N R4W

T2N R8W T2N R7W T2N R6W T2N R5W T2N R4W

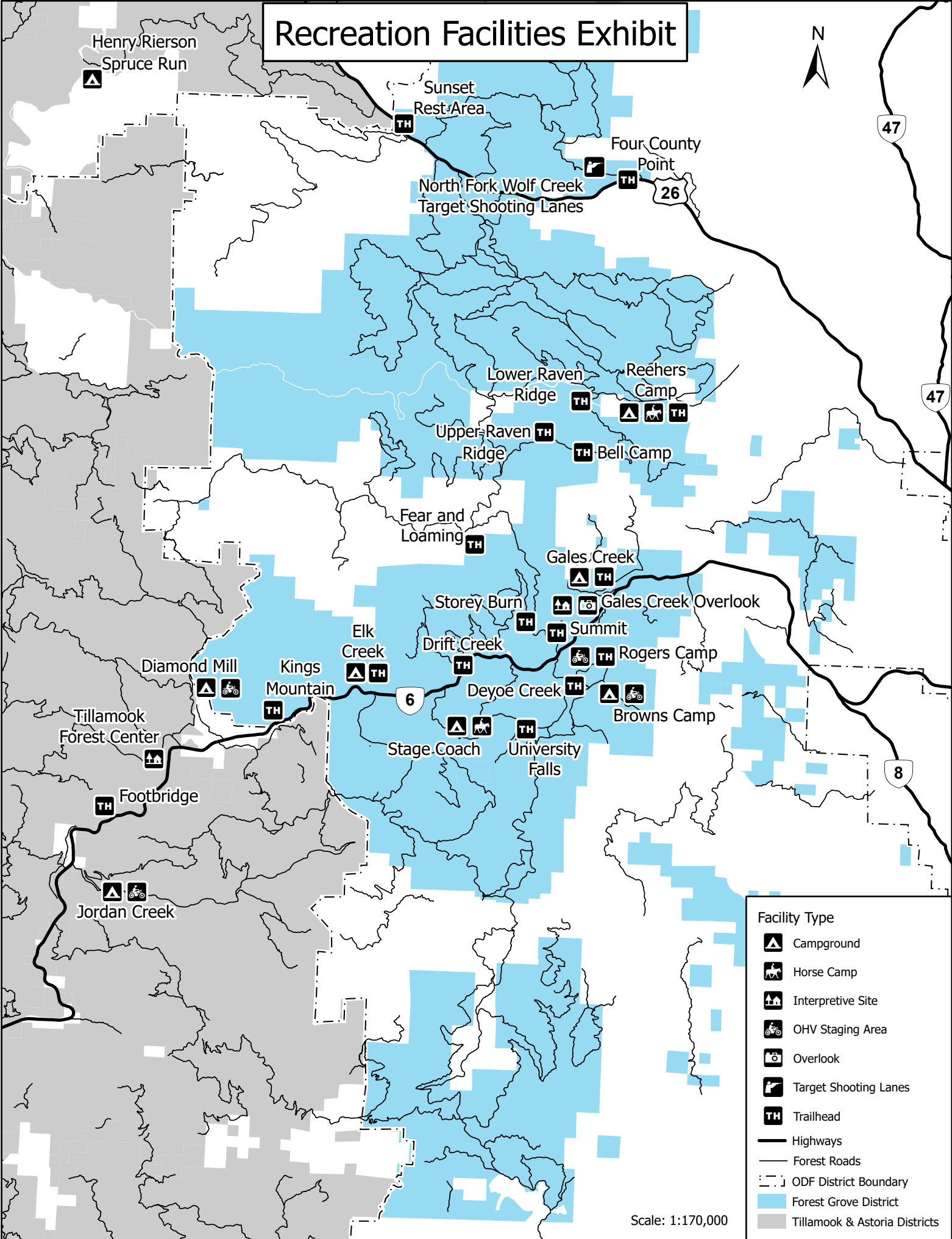
T1N R8W T1N R7W T1N R6W T1N R5W T1N R4W

T3S R7W T3S R6W T3S R5W

T4S R7W T4S R6W T4S R5W

T2S R6W T2S R5W

Recreation Facilities Exhibit



Facility Type

- Campground
- Horse Camp
- Interpretive Site
- OHV Staging Area
- Overlook
- Target Shooting Lanes
- Trailhead
- Highways
- Forest Roads
- ODF District Boundary
- Forest Grove District
- Tillamook & Astoria Districts

Scale: 1:170,000

Appendix C – Consultations with Other State Agencies

Oregon Department of Fish and Wildlife (ODFW):

ODFW biologists were provided the Summary Document and Pre-Operations Reports for review. A follow up cooperator/specialist meeting was held to address questions and concerns. ODFW expressed an interest in working with ODFs Stream Specialist on identifying potential stream enhancement projects and prescriptions throughout the coming fiscal year.

Appendix D – Public Comment Process

The Oregon Department of Forestry issued a Press Release in April 2023, announcing a formal 45-day public comment period for the Fiscal Year 2024 Annual Operations Plans from April 25, 2023 through June 8, 2023.

The purpose of the Public Comment Period is to provide an opportunity for the public to review the Annual Operations Plan, ask questions, make recommendations and offer comments. As a public agency, ODF strives to operate in the best interest of Oregonians. We provide opportunities for public participation to assist us in securing the greatest permanent value from state forests for all Oregonians.

The following changes have been made to the Forest Grove FY24 AOP since the Public Comment Period:

Timber Harvest Operations:

- Nine Iron moved from Primary to Alternate.
- CE Junction moved from Alternate to Primary.
- Stream buffers were updated for the following sales:
 - Cry Wolf Units 1 & 2, Nine Iron, Rock Music ALT, Run Duo Unit 1; Sunday Best Units 1, 2, and 3; Saddle Time ALT; Trifecta Units 1, 2 and 3; and Triple Crown Units 1 & 2.
- Geotechnical buffers were updated for the following sales:
 - Cry Wolf Units 1 and 2, NW Slope Units 1 and 2; Sunday Best Unit 1; and Trifecta Units 1 and 2
- Slope Stability Issues Section of Pre-Operations Reports, the following wording was added to the Alternate sales Rock Music, Rodger Dodger, Saddle Time, and Sunday Prime:
“Geotech Review: If sale moves to a Primary, Geotechnical review will be completed prior to sale layout.”
- NW Slope Unit 2 New Road Construction: After review by the Geotechnical Specialist and further review by District Staff, it was determined that the northern spur in Unit 2 was not needed to access or log the timber sale. Miles of New Road Construction decreased from 1.33 to 1.18.
- Nine Iron will now be pre-roaded: In order to save on move-in costs, the District has decided to construct the 0.15 mile new construction spur and improve the haul route for FY24 Nine Iron with the FY23 Front Nine sale. FY23 Front Nine is planned to sell in August 2023. The Exhibit A map has been updated to show the new construction spur that will be pre-roaded. The Pre-Operations Report has been updated with pre-roading wording. The Pre-Operations Report Table 7 has been updated to show no new construction or improvement with Nine Iron.
- Nine Iron Table A-2 Correction to Landscape Design Column: The entire sale has a Desired Future Condition of non-complex. Table A-2 has been corrected to accurately reflect this.
- Clear Connection: Exhibit A map updated to show accurate Status of existing roads.

- Triple Crown: Exhibit A map updated to remove vacated roads in the vicinity of the sale units.
- Bible Creek Unit 1 updated to show acres designated as Green Tree Retention from a previous adjacent sale.
- The Pre-Operations Reports, maps, Summary Tables and the Summary Document have been updated to reflect these changes.

Below is a link to a summary of the comments received for the FY24 AOPs and ODF's responses to those comments.

<https://www.oregon.gov/odf/documents/aboutodf/2024-aop-public-comment-summary.pdf>

Appendix E – Pre-Operations Reports

Pre-Operations Reports are available online through a Web Application at the following link:

<https://geo.maps.arcgis.com/apps/webappviewer/index.html?id=ae569c1ff445457eb8fe1b556699bce8>

Just zoom to the District you are interested in and click on any sale. A pop-up box should show up with a link to the Pre-Operations Report for the sale.

Appendix F – Forest Land Management Classification Modification Notice

No modifications are proposed with the Fiscal Year 2024 Annual Operations Plan.

Appendix G – Landscape Design
Implementation Plan Minor Modification Notice

No modifications are proposed with the Fiscal Year 2024 Annual Operations Plan.