

Pacific Fisher CCAA

ODF's State Forest Division and the U.S. Fish and Wildlife Service (Service) entered into a Candidate Conservation Agreement with Assurances (CCAA) for the fisher (*Pekania pennanti*) on September 27, 2019. The agreement covers BOFL on select Districts within the West Coast distinct population segment (DPS) of fisher. This includes Klamath-lake, Southwest Oregon, North Cascade, and the Western Lane districts, (including the Coos unit) where fisher may presently occur or are likely to be reintroduced.

A CCAA is a voluntary, federal regulatory agreement in which non-federal landowners provide specific conservation benefits for candidate species that have not yet been federally listed as threatened or endangered, but may be in the near future. In exchange for these conservation measures the Service provides regulatory assurances that no additional conservation measures will be required on enrolled lands, should the species be listed under the federal Endangered Species Act at a later date.

ODF explored the option of entering into a CCAA in early 2016 but the species was not listed and a CCAA was not pursued. After a court decision in 2018, it seemed likely that the species would be listed in September 2019. ODF leadership directed staff to pursue a CCAA with the Service. The Southern Oregon Area Biologist began working closely with District staff and the Service to develop a set of acceptable conservation measures and to determine the scope of lands to include in the agreement. Conservation measures were carefully vetted by ODF operational field staff to ensure they would be implementable and not unduly burdensome.

The balance between conservation measures and regulatory assurances make the CCAA a win-win for ODF, CFTLC member counties, the Service and the fisher.



Fisher photos courtesy of Green Diamond Resource Company



BOF Land Status

Number of Fish Barriers Removed:
FY17: 7 FY18: 6

Miles of Fish Access Restored :
FY17: 1.6 miles FY18: 2.35 miles

Resident Spotted Owl Sites:
FY17: 28 FY18: 28

Marbled Murrelet Management Areas:
FY17: 101 FY18: 103

Acres Planted: done
FY18: 5,949 acres FY19: 6,874 acres

Marbled Murrelet Management Acres:
FY17: 14,803 acres FY18: 16,211



Council of Forest Trust Land Counties Annual Report

Fiscal Year 2019

**Prepared for the Association of Oregon Counties
by the Oregon Department of Forestry**

**State
Forests
Division**

The Oregon Department of Forestry manages 729,718 acres of Board of Forestry Lands. The Council of Forest Trust Land counties have a protected and recognizable interest in these lands. The lands are managed to secure the greatest permanent value by providing healthy, productive, and sustainable forest ecosystems that over time and across the landscape provide a full range of social, economic, and environmental benefits to the people of Oregon. The management focus of these lands is to actively manage them in a sound environmental manner to provide sustainable timber harvest and revenue to the state, counties and local taxing districts OAR 629-035-0020 (2). The purpose of this report is to provide an annual summary of activities on these Board of Forestry State Forestlands.

Full Report at www.oregon.gov/ODF/Pages/Reports.aspx



Economic

HARVESTED VOLUME

- 297 MMBF of timber volume was removed from BOF land in FY19.

FY 2019 REVENUE

- \$86.9 million distributed to counties.
- \$53.8 million retained by ODF.

FY 2019 COSTS

- Total costs were \$34.7 million.
- Direct Expenditures were approximately \$28.6 million.
- Revenue transfers were \$6.1 million.
 - Fire Protection costs were \$2.3 million.
 - Debt service for capital construction was \$92,141.
 - Seed orchard costs were \$100,378.

SOLD SALES DONE

- 61 timber sales were sold on BOF land.
- Estimated to produce a total volume of 229.4 MMBF with a value of 95.7 million.
- Total project costs from sales sold in FY 2019 will be about \$8.4 million.

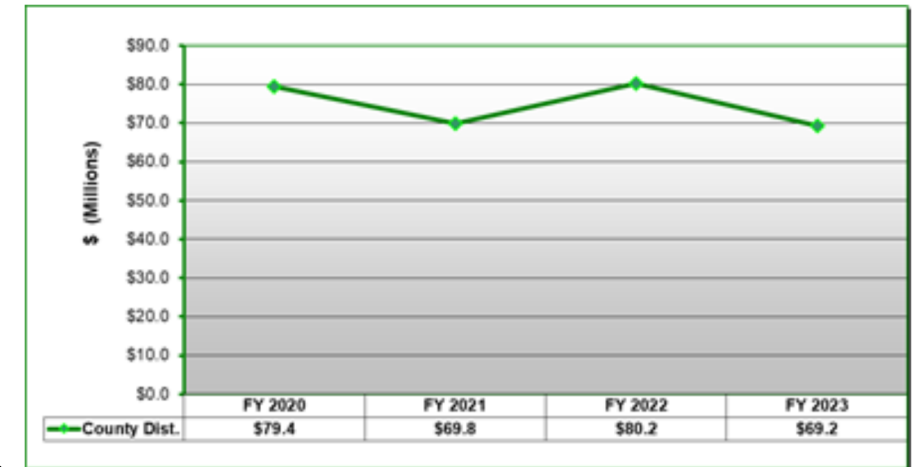
ECONOMIC and PLANNING UPDATE

Average stumpage values decreased on Board of Forestry timber sales sold in FY2019 by \$117/mbf, from \$536/mbf in FY18 to \$419/mbf in 2019. The State Forests Division continues to develop and implement business improvement and marketing strategies to increase revenues and decrease cost. Timber sale contracts and marketing practices are continually adjusted to meet current and future economic conditions and business standards.

Support To Local Communities

A portion of the revenue generated from State Forest timber sales is distributed to schools, local taxing districts, and the county general fund. This revenue transfer is referred to as the “county distribution.”

County Share - Fall 2019 Revenue Projection



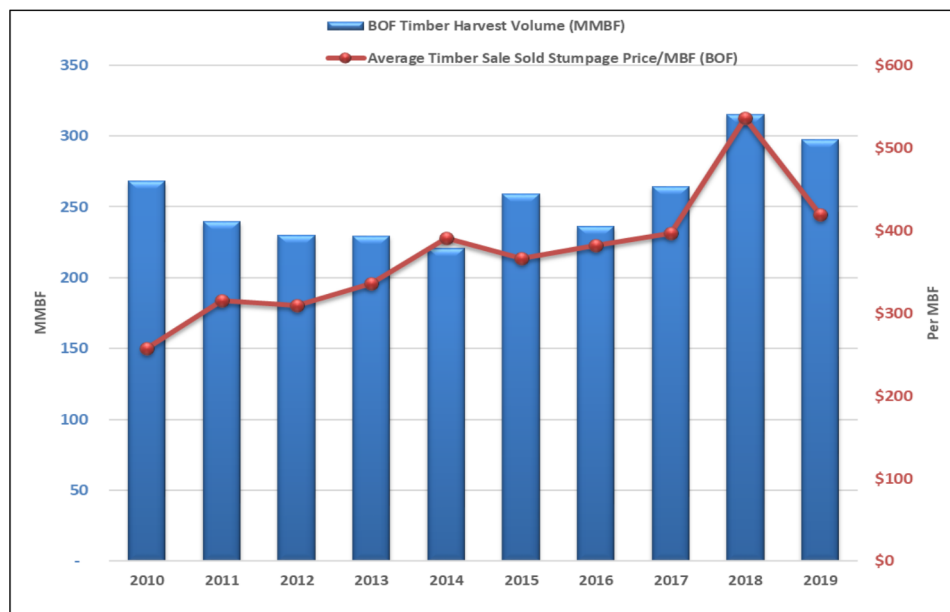
Tillamook Forest Center Highlights

Visitation
53,554

Education Participation
4,262

Interpretation Participation
8,195

Timber Volume Removed and Stumpage Prices FY 2009 – 2019



2020 PLANNED TIMBER SALES (2020 AOP - All Districts)

- 6,550 Clear cut acres
- 5,168 Partial cut acres
- 225.5 MMBF Harvest
- Project Costs of \$9.8 million
- Appraised Net-Value of \$91 million

Campers On State Forests Campgrounds

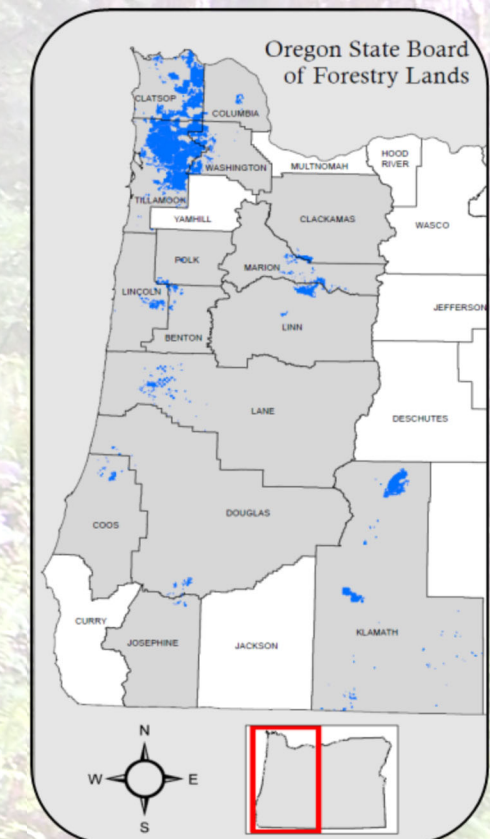
2018	2019
40,011	39,110

Trails Maintained (miles)

Tillamook State Forest:	247
Clatsop State Forest:	51
Santiam State Forest:	27
West Oregon District:	14

County Share of Revenue from BOF Lands

County	FY 2019
Benton	\$1,657,137
Clackamas	\$407,008
Clatsop	\$19,648,613
Columbia	\$2,847,908
Coos	\$0
Douglas	\$224,770
Josephine	\$501,547
Klamath	\$1,598,383
Lane	\$4,858,633
Lincoln	\$1,853,335
Linn	\$5,862,207
Marion	\$8,580,099
Polk	\$22,493
Tillamook	\$24,743,274
Washington	\$14,104,040
Total	\$86,909,447





Council of Forest Trust Land Counties Annual Report

FISCAL YEAR 2019



**Prepared by the Oregon
Department of Forestry**

November 2019

Table Of Contents

Executive Summary	Pg 1
Financial and Asset Management	Pg 2
Forest Land Management	Pg 9
Links To More Information	Pg 12

FY 2019 Annual Report Located at:

<http://www.oregon.gov/ODF/Pages/Reports.aspx>

Executive Summary

The Oregon Department of Forestry manages 729,718 acres of Board of Forestry Lands (BOFL) for which the Council of Forest Trust Land counties have a protected and recognizable interest. These lands are managed through the State Forests Division to secure the greatest permanent value by providing healthy, productive and sustainable forest ecosystems that over time provide a full range of social, economic, and environmental benefits for Oregonians. These lands are sustainably managed to provide timber revenue to the state, local schools and communities, and local taxing districts. This report summarizes fiscal and management accomplishments on BOFL for Fiscal Year 2019 (FY 2019).

Long-term direction for BOFL are guided through regionally specific forest management plans. Details outlining specific operations are further refined in district implementation plans, which offer a detailed ten-year outlook of forest management activities in each district. Implementation plans document many activities, including long-range plans for achieving stand structure goals across the landscape, young stand management, and restoration. On an annual basis, additional specificity is presented to the public through annual operation plans for each State Forests district.

In FY 2019, ODF harvested approximately 297 million board feet, generating \$140.7 million in net revenue. FY 2019 operational costs totaled \$34.7 million dollars in direct expenditures. ODF retained \$53.8 million in revenue and distributed \$86.9 million to the CFTLC member counties.

The following report provides historic and projected timber harvest volumes and estimated revenues to support planning processes for the Association of Oregon Counties. Currently, the housing market exerts a strong influence on ODFs revenue trends. Average stumpage values on BOFL decreased in timber sales sold in FY 2019 by \$117 per thousand board feet (mbf) less than FY 2018.

This report provides a four year revenue projection for the CFTLC member counties. It is important to note that these estimates are subject to uncertainties in the forestry sector and log market volatility. The further into the future, there is greater uncertainty associated with the anticipated revenues.

ODF is committed to sustainable management of BOFL which includes managing for healthy productive diverse forests that provide a range of conditions by investing in variety of activities. These activities include: reforest and maintain young stands; wildlife habitat enhancement; maintain and construct roads; control invasive species; support recreation activities; provide education and outreach; implement projects to improve fish habitat; inventory stands; and research and monitoring. We continue to work with local partners, and other state and federal agencies to manage state-owned forests for a full range of social, economic, and environmental benefits for Oregonians.

Financial and Asset Management

Overview

This report is intended to focus on Fiscal Year (FY) 2019. However, in the business of forest management, it is important to analyze trends in revenue and expenditures over extended time frames, as the timing of harvest and other variables can cause a given year to be above or below average.

ODF provides the statutorily established Forest Trust Lands Advisory Committee (FTLAC) with ongoing status reports related to revenue projections and proposed Oregon Department of Forestry (ODF) budgets for the upcoming biennium. ODF manages BOFL through the share of revenue deposited in the ODF Forest Development Fund (FDF). About 297 million board feet (MMBF) was harvested from BOFL from July 1, 2018 through June 30, 2019.

Table 1 displays the volume harvested by county during fiscal years 2015 through 2019. Variation in year-to-year harvest volume represents choices of timber purchasers based on their individual constraints, as well as choices by the Department which are guided by ODF forest management plans outlining how much timber to market during a given year.

Table 1: Timber Volume Harvested from BOFL by County					
Total Volume MBF (thousand board feet)					
County	2015	2016	2017	2018	2019
Benton	767	1,210	7,139	3,590	4,699
Clackamas	1,682	104	3,019	3,225	805
Clatsop	80,200	89,503	103,963	113,528	62,896
Columbia	0	5,642	4,615	2,887	7,968
Coos	5	2	0	0	0
Douglas	982	2,440	2,846	3,196	727
Josephine	329	17	266	982	663
Klamath	16,102	5,947	9,560	15,130	11,233
Lane	4,534	357	14,757	11,919	15,727
Lincoln	10,556	7,208	4,544	13,662	6,842
Linn	12,731	8,042	14,285	14,948	16,733
Marion	3,942	6,286	7,829	5,096	16,547
Polk	670	0	0	0	0
Tillamook	78,792	79,074	80,237	86,216	100,292
Washington	47,578	30,204	11,362	40,846	52,073
TOTAL	258,870	236,035	264,421	315,224	297,202

County Revenues from Timber Sales

A portion of the revenue generated from BOFL timber sales is distributed to CFTLC member counties, which are further distributed by those counties to schools, local taxing districts, and each respective county’s general fund. This revenue transfer is referred to as the “county distribution.” The county revenue distribution from timber harvests for fiscal years 2015 through 2019 with five and 10-year averages are shown in Table 2. County revenues during FY 2019 were approximately \$87 million. The average amount of revenue distributed to the counties over the previous 10 fiscal years was \$55 million. Revenues are distributed to counties each quarter.

A variety of factors contribute to annual harvest levels and corresponding revenues. A multi-year average compensates for “up” or “down” years, and provides a clearer long-term view of forest management.

County	2015	2016	2017	2018	2019	5-year Avg	10-year Avg
Benton	\$109,752	\$312,326	\$1,968,994	\$750,958	\$1,657,137	\$959,833	\$688,507
Clackamas	\$287,354	\$64	\$549,755	\$618,091	\$407,008	\$372,454	\$449,942
Clatsop	\$18,130,810	\$24,742,787	\$22,917,872	\$32,267,665	\$19,648,613	\$23,541,550	\$18,013,497
Columbia	\$401,915	\$1,695,005	\$1,353,273	\$970,033	\$2,847,908	\$1,453,627	\$911,529
Coos	\$0	\$0	\$0	\$54	\$0	\$11	\$56,998
Douglas	\$336,395	\$632,281	\$440,158	\$791,755	\$224,770	\$485,072	\$329,663
Josephine	\$30,142	\$2,315	\$34,391	\$42,279	\$501,547	\$122,135	\$66,237
Klamath	\$1,657,727	\$1,004,754	\$673,174	\$2,494,103	\$1,598,383	\$1,485,628	\$1,456,855
Lane	\$1,943,320	\$348,971	\$3,441,408	\$4,510,877	\$4,858,633	\$3,020,642	\$2,817,132
Lincoln	\$1,740,959	\$1,692,088	\$1,180,473	\$4,081,104	\$1,853,335	\$2,109,592	\$1,516,549
Linn	\$3,737,289	\$2,231,016	\$4,479,228	\$3,989,617	\$5,862,207	\$4,059,871	\$3,351,799
Marion	\$1,092,662	\$647,555	\$2,759,790	\$1,145,705	\$8,580,099	\$2,845,162	\$2,004,011
Polk	\$39,769	\$63	\$2,342	\$72,031	\$22,493	\$27,340	\$93,359
Tillamook	\$12,956,012	\$17,728,557	\$15,470,474	\$17,336,819	\$24,743,274	\$17,647,027	\$14,404,051
Washington	\$12,469,766	\$9,069,513	\$3,720,597	\$11,820,105	\$14,104,040	\$10,236,804	\$9,317,118
Total	\$54,933,873	\$60,107,296	\$58,991,928	\$80,891,196	\$86,909,447	\$68,366,748	\$55,477,244

Revenues and Expenditures

Actual net revenues for FY 2019 totaled \$140.7 million. Net revenues averaged \$108.9 million over the past 5 years.

Fiscal Year	Revenues			Expenditures					Project Work
	Net Revenue	Distributed Revenue	Retained Revenue	Personal Services	Services & Supplies	Capital Outlay	Net Transfers	Total Expenditures	Project Work
2019	\$140,729,404	\$86,909,447	\$53,819,957	\$16,773,384	\$12,077,102	\$202,584	\$6,105,995	\$34,730,225	\$11,571,959
2018	\$128,066,124	\$80,891,196	\$47,174,928	\$16,939,171	\$9,228,686	\$39,724	\$6,126,765	\$32,333,896	\$11,832,102
2017	\$93,761,644	\$58,992,626	\$34,914,595	\$16,923,421	\$9,411,538	\$180,681	\$6,885,195	\$33,400,834	\$10,171,965
2016	\$94,855,391	\$60,107,296	\$34,748,095	\$16,384,448	\$9,692,986	\$441,533	\$6,271,822	\$32,946,969	\$10,824,855
2015	\$86,892,296	\$54,933,873	\$31,958,423	\$15,954,220	\$9,943,455	\$82,897	\$5,185,034	\$31,165,607	\$9,539,792

Total expenditures in FY 2019 were \$34.7 million (Table 3), related directly to operational budget units that manage BOFL. The budget units include the ODF State Forests' Division staff, three regional areas, and eight districts. These units are responsible for timber sale contract development and compliance, reforestation and intensive management activities, Endangered Species Act (ESA) compliance, recreation, interpretation and education, research and monitoring, forest planning, Board of Forestry support, and overall program management.

The division faces a long-term funding challenge as increasing costs outpace income from state forests. The BOFL's timber harvest revenue is distributed at 63.75 percent to counties and other local taxing districts while the remaining 36.25 percent is retained by the division to cover all management costs. Although retained revenue exceeds costs during some fiscal years, when timber prices are higher than average, the annual amount does not always provide sufficient revenue to cover essential operating costs, or to make critical investments in recreation, research and monitoring, forest inventory, young stand management activities, and other key forest stewardship work. The division has recently had positive net operating income by keeping expenses low, implementing business improvements and harvesting strategically in good market conditions. Over time the division will face financial changes with the ability to: foster the range of forest characteristics across the landscape that Oregonians expect; accurately estimate and project forest conditions; support future forest planning efforts; and conduct adaptive management, which uses monitoring to inform timely and responsible decision-making.

The division is vulnerable to shifts in the timber market and changes in forest conditions from disturbances such as fire, flood, insects, disease, and wind storms. These conditions suggest that a business model with greater flexibility and a diverse income stream would provide greater financial stability. Under current financial constraints the department is challenged to fully implement the forest management plans. The agency is working with the Board of Forestry and stakeholders to explore new business models and management approaches that better align income and expenses.

Historic Timber Harvests

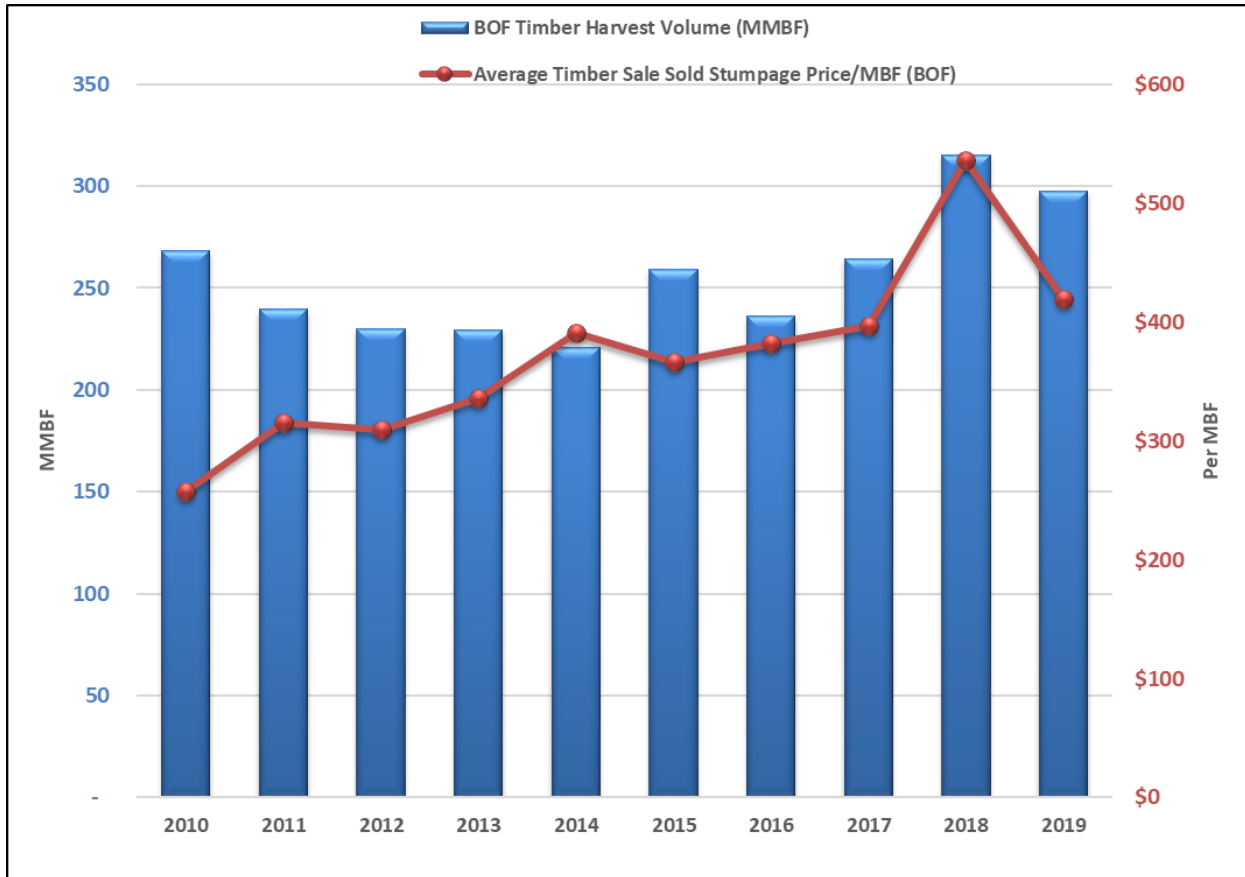
Timber harvest volume represents volume removed from BOFL during FY 2019. In FY 2019, total timber harvested from BOFL was approximately 297 MMBF. The volume and stumpage prices of sold sales for the previous 10 years are shown in Table 4, along with five and ten-year averages.

Average ODF stumpage prices in the past 10 years have ranged from \$257/mbf to \$536/mbf (Figure 1). ODF offers a fairly consistent timber volume for auction on an annual basis, consistent with Annual Harvest Objectives in implementation plans; however harvested volumes fluctuate along with market conditions and timber sale purchaser decisions on specifically when to harvest during the timber sale contract period.

Fiscal Year	¹Gross Timber Sale Value Harvested (BOF)	BOF Timber Harvest Volume (MBF)	Average Sold Stumpage Price/MBF (BOF)
2019	\$151,697,665	297,202	\$419
2018	\$138,442,437	315,224	\$536
2017	\$106,670,082	264,421	\$397
2016	\$100,042,287	236,035	\$382
2015	\$97,557,968	258,871	\$366
2014	\$81,170,164	220,859	\$391
2013	\$79,266,395	229,488	\$336
2012	\$71,071,253	229,907	\$309
2011	\$68,027,273	239,559	\$315
2010	\$62,821,428	268,142	\$257
Last 5-Year Average	\$118,882,088	274,351	\$420
10-Year Average	\$95,676,695	255,971	\$371

¹ Timber Sale Value is gross value including project work.

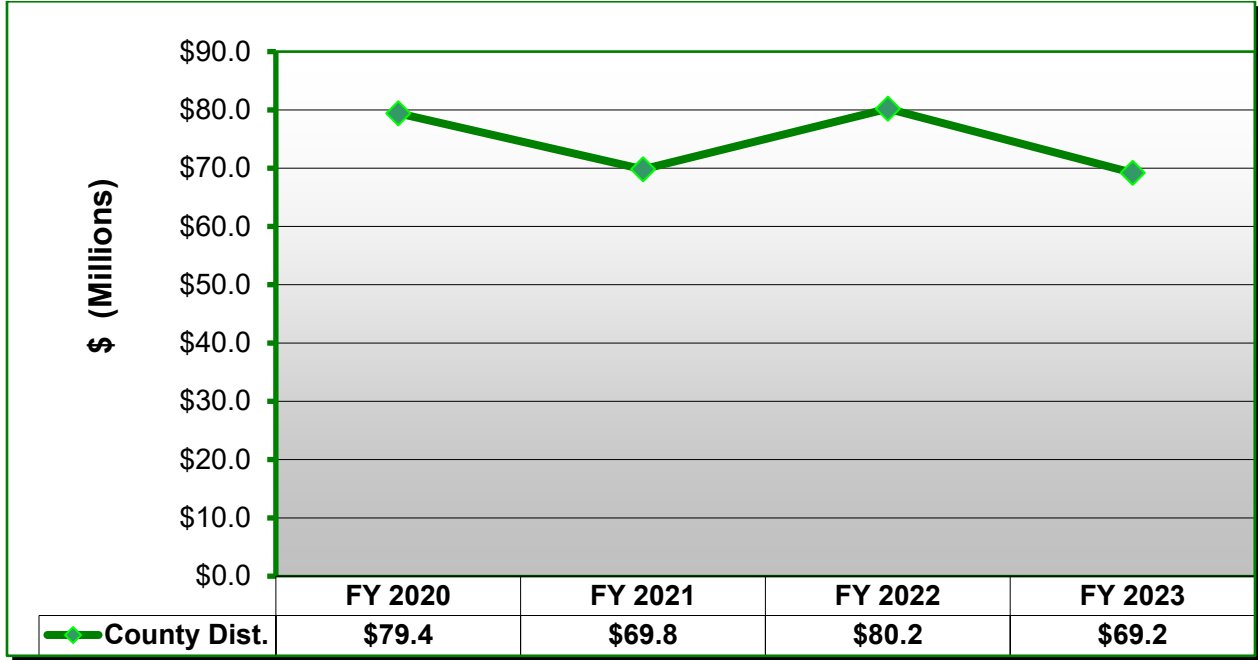
Figure 1: Timber Volume Harvested and Stumpage Prices FY 2010 – 2019



County Revenue Projection

The State Forests Division provides a revenue projection to the Association of Oregon Counties (AOC) once a year. ODF continues to improve the revenue projection process in an effort to provide more accurate estimates for internal information and to the AOC. Figure 2 and Table 5 represent the fall 2019 revenue projection produced by State Forests Division staff. It is important to keep in mind the current uncertainties in the forestry sector and the log market volatility. The further into the future, the greater the uncertainty associated with the anticipated revenues. This projection includes estimated revenues from both sold, planned and future timber sales. Housing-start data is used to forecast the revenue included in the “future category” of the projection. The assumption is that stumpage prices will move in correlation with projected housing starts. Assumptions are made on the timing of revenues based on local knowledge from ODF district personnel. These projections are estimates only. Actual revenues will depend on sold stumpage prices and actual harvest volumes. Market factors or changes in federal or state regulatory requirements could also significantly alter projections.

**Figure 2: Fall 2019 Total County Revenue Distribution Projection
Fiscal Years 2020-2023**



<i>County</i>	FY 2020	FY 2021	FY 2022	FY 2023
Benton	\$ 1,452,183	\$ 967,145	\$ 930,347	\$ 850,138
Clackamas	\$ 72,018	\$ 146,708	\$ 441,253	\$ 739,251
Clatsop	\$ 23,402,331	\$ 25,139,958	\$ 23,411,158	\$ 24,328,503
Columbia	\$ 279,614	\$ 431,126	\$ 3,921,593	\$ 1,317,472
Coos	\$ -	\$ 314,478	\$ 206,825	\$ 218,910
Douglas	\$ 49,398	\$ 325,866	\$ 442,807	\$ 390,239
Josephine	\$ 28,918	\$ 248,670	\$ 52,645	\$ 94,998
Klamath	\$ 954,887	\$ 938,405	\$ 1,630,516	\$ 1,271,716
Lane	\$ 6,373,855	\$ 1,406,425	\$ 6,518,139	\$ 3,606,992
Lincoln	\$ 1,924,469	\$ 3,751,563	\$ 3,655,130	\$ 2,004,956
Linn	\$ 7,031,496	\$ 1,863,788	\$ 3,423,232	\$ 3,361,835
Marion	\$ 1,476,443	\$ 1,242,460	\$ 2,239,507	\$ 2,518,508
Polk	\$ 924,795	\$ 418,764	\$ 407,732	\$ 256,288
Tillamook	\$ 26,302,726	\$ 23,456,441	\$ 22,338,708	\$ 19,133,211
Washington	\$ 9,088,651	\$ 9,154,821	\$ 10,586,760	\$ 9,070,050
Total	\$79,362,000	\$69,807,000	\$80,206,000	\$69,163,000

The State Forests Division's FY 2020 budget is shown below in Table 6.

Table 6: State Forests Fiscal Year 2020 Budget - BOFL				
Budget Unit	Personal Services	Services and Supplies	Capital Investments	Total
Salem Total	\$5,614,042	\$6,261,987	\$80,359	\$11,956,388
NWOA Office	\$2,844,590	\$97,404	\$0	\$3,453,863
Astoria	\$2,239,083	\$2,235,391	\$0	\$4,474,474
South Fork	\$1,736,079	\$915,544	\$280,000	\$2,931,623
Forest Grove	\$2,221,417	\$1,557,256	\$9,848	\$3,777,176
North Cascade	\$818,148	\$666,245	\$13,279	\$1,497,672
Tillamook	\$2,395,312	\$3,209,862	\$0	\$5,605,174
Tillamook Forest Center	\$915,321	\$649,753	\$120,000	\$1,685,074
West Oregon	\$639,126	\$448,113	\$0	\$1,087,239
NWOA Total	\$14,309,600	\$9,779,568	\$423,127	\$24,512,295
SOA Office	\$161,283	\$14,123	\$0	\$175,406
Western Lane	\$570,662	\$542,614	\$0	\$1,113,276
SOA Total	\$731,945	\$556,737	\$0	\$1,288,682
EOA office	\$26,871	\$33,909	\$0	\$60,780
Klamath	\$594,380	\$448,025	\$0	\$1,042,405
EOA Total	\$621,251	\$481,934	\$0	\$1,103,185
Total Operating Budget	\$21,276,838	\$17,080,226	\$503,486	\$38,860,550
Total Transfers	\$0	\$0	\$0	\$8,439,995
Total Expenditures	\$0	\$0	\$0	\$47,300,545

Forest Land Management

Annual Operations Plans – FY 2020

ODF manages a total of 762,723 acres, of which 729,718 are BOFL and 33,005 are CSFL. Table 7 shows the distribution of BOFL acres by county.

Annual Operation Plans (AOPs) are written each year by each district to describe and direct all activities that will be carried out on the district during the year. These activities require significant commitment of personnel and funds and include, but are not limited to:

- Timber sales
- Habitat management
- Young stand management
- Recreation projects
- Road construction and maintenance
- Restoration Opportunities
- Monitoring efforts

County	Acres
Benton	8,401
Clackamas	7,266
Clatsop	146,927
Columbia	6,459
Coos	7,244
Douglas	8,625
Josephine	2,482
Klamath	98,755
Lane	24,734
Lincoln	15,530
Linn	21,357
Marion	18,331
Polk	6,048
Tillamook	310,679
Washington	46,880
Grand Total	729,718

Note: Report is based on legal acres not GIS acres

The links to the AOPs can be found here.
<http://www.oregon.gov/ODF/Pages/Reports.aspx>

Table 8 and 9 details planned harvest by county and district for FY 2020.

Table 8: FY 2020 AOP – Planned Sale Summary by County for BOFL							
County	Regen. Acres	Partial Cut Acres	Total Acres	Total Volume	Gross Value	Project Value	Net Value
				MMBF	<i>In Thousands of Dollars</i>		
Benton	58	30	88	2.5	\$1,337.1	\$62.1	\$1,275.0
Clackamas	83	0	83	2.1	\$1,178.4	\$83.8	\$1,094.6
Clatsop	2,304	664	2,968	80.7	\$34,668.8	\$3,634.2	\$31,034.7
Columbia	95	225	320	6.6	\$3,598.8	\$236.9	\$3,361.9
Coos	58	0	58	0.6	\$220.1	\$25.0	\$195.1
Douglas	56	0	56	1.8	\$721.3	\$41.0	\$680.3
Klamath	0	3,835	3,835	6.5	\$1,318.9	\$42.8	\$1,276.1
Lane	210	0	210	8.8	\$4,441.0	\$398.0	\$4,043.0
Lincoln	199	294	493	9.0	\$4,072.4	\$219.7	\$3,852.7
Linn	312	0	312	9.6	\$5,180.4	\$398.8	\$4,781.6
Marion	119	0	119	5.6	\$3,303.6	\$187.2	\$3,116.4
Tillamook	2,515	120	2,635	71.1	\$29,940.5	\$3,617.0	\$26,323.5
Washington	541	0	541	20.6	\$10,803.6	\$872.0	\$9,931.6
AOP Total	6,550	5,168	11,718	225.5	\$100,784.9	\$9,818.5	\$90,966.4

Table 9: FY 2020 AOP – Planned Sale Summary by District for BOFL							
District	Regen. Acres	Partial Cut Acres	Total Acres	Total Volume	Gross Value	Project Value	Net Value
				MMBF	<i>In Thousands of Dollars</i>		
Astoria	2,099	664	2,763	71.3	\$29,495.4	\$3,311.2	\$26,184.2
Forest Grove	1,445	297	1,742	61.5	\$32,636.2	\$2,597.5	\$30,038.7
Klamath-Lake	0	3,835	3,835	6.5	\$1,318.9	\$42.8	\$1,276.1
North Cascade	513	0	513	17.3	\$9,662.4	\$669.8	\$8,992.6
Southwest	56	0	56	1.8	\$721.3	\$41.0	\$680.3
Tillamook	1,912	48	1,960	46.2	\$16,880.1	\$2,451.4	\$14,428.7
West Oregon	257	324	581	11.5	\$5,409.5	\$281.8	\$5,127.7
Western Lane	268	0	268	9.3	\$4,661.1	\$423.0	\$4,238.1
AOP Total	6,550	5,168	11,718	225.5	\$100,784.9	\$9,818.5	\$90,966.4

Other Management Activities

Reforestation activities include site preparation, planning, and tree protection. These activities are dependent on the timber harvest schedule, availability of suitable seedlings, and weather. Intensive management activities listed in Table 10 represent an investment in future benefits such as volume, timber quality, and habitat.

South Fork inmate crews provide valuable forest management services to the State Forest Division. South Fork inmate crew costs for intensive management activities during FY 2019 totaled \$738,145 and these costs are included in Table 10.

Table 10: Intensive Management Activities on BOFL - FY 2019			
MANAGEMENT ACTIVITY	ACRES PLANNED	ACRES COMPLETED	TOTAL COST
Initial Planting*	6,806	6,874	\$2,440,351
Interplanting*	1,056	827	\$243,835
Invasive Plant Control	201	147	\$36,988
Precommercial Thinning	975	1,814	\$246,322
Pruning	40	0	\$0
Release-Chemical- Aerial	1,250	780	\$38,793
Release-Chemical-Hand	1,660	439	\$59,072
Release-Mechanical-Hand	848	1,428	\$228,711
Site Prep -Mechanical	306	347	\$69,399
Site Prep -Slash Burning	6,240	5,956	\$36,780
Site Prep-Chemical- Aerial	5,900	4,968	\$264,693
Site Prep-Chemical- Hand	1,123	1,069	\$96,791
Surveys - Invasive Plants	0	0	\$0
Surveys - Reforestation	8,731	8,048	\$29,452
Tree Protection-Barriers	2,907	1,226	\$188,137
Tree Protection-Direct Control	7,571	7,290	\$562,744
Underplanting*	0	0	\$0
Totals	45,614	41,214	\$4,542,069

*Planting costs include all costs including seedlings & seed.

Table 11 provides information about the road system management on BOFL by District and County.

Table 11: FY 2019 Annual Road Work - Board of Forestry Lands								
District & County	Aggregate/Paved Surface			Dirt Surface			Bridge	Fish Pipes
	Constructed	Improved	Vacated	Constructed	Improved	Vacated	Installed	Installed
Astoria/Clatsop	14.8	56.7	3.63	3	0	0.02	0	-2*
Astoria/Tillamook	0	0	0	0	0	0	0	0
Forest Grove-Clatsop	0.54	1.43	0	0	0	0	0	0
Forest Grove/Columbia	0.16	2.61	0	0	0	0	0	0
Forest Grove/Tillamook	2.6	9.04	0.06	0	0	0	0	0
Forest Grove/Washington	3.37	18.8	0	0.58	1.17	1.25	0	2
Klamath/Klamath	0	2.1	0	0.13	8.4	0	0	0
North Cascade/Clackamas	0	0	0	0	0	0	0	0
North Cascade/Linn	0.94	14.28	0	0	0	0	0	0
North Cascade/Marion	1.87	11.21	0	0	0	0	0	0
Tillamook-Tillamook	16.9	74	0	0.1	0.8	0	2	0
Tillamook/Washington	0	0	0	0	0	0	0	0
West Oregon/Benton	0.1	2.4	0	0.5	0	0	0	0
West Oregon/Lincoln	0	19.1	0	0.2	3.4	0	0	0
West Oregon/Polk	0	3.4	0	0	0	0	0	0
Western Lane/Coos	0	0	0	0	0	0	0	0
Western Lane/Douglas	0	0	0	0	0	0	0	0
Western Lane/Jackson	0	0	0	0	0	0	0	0
Western Lane/Josephine	0.53	0	0	0	0	0	0	0
Western Lane/Lane	2.37	2.98	0	0	0	0.3	0	0
Totals	44.18	218.05	3.69	4.51	13.77	1.57	2	-2

*A negative number for fish pipes installed was due to roads being vacated.

Links To More Information

Stand Level Inventory

[The Forest Inventory Report](#) covers the fiscal year-end stand level inventory estimates on Board of Forestry and Common School Land for each district.

Stream and Watershed Restoration

[Restoration reports](#) summarize all restoration activity reported to OWEB by State Forest Districts since 1995.

Forest Health

- [Aerial Survey Summary Reports](#) by ODF Area
- [Forest Health Highlights Report](#) -Joint Publications of Oregon Department of Forestry and USDA Forest Service, Pacific Northwest Region

Recreation Accomplishments

[BOF FY2019 Recreation Accomplishment Report](#) takes a district level look at volunteer hours, the trail project summary, camping and camping revenue and recreation facility planning and development projects.