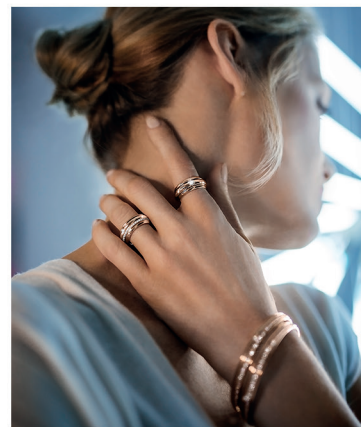


PIAGET

SIZING GUIDE BRACELETS



This guide will help you determine your Piaget bracelet size.

HOW TO PRINT THE PIAGET RULER AND BRACELET SIZER

- Before printing the sizing guide, be sure that your printer options are set to print to actual size. Do not scale to fit.
- Print on full sheets of US Letter size.
- To verify that the sizing guide has printed correctly, measure the sample below with a ruler. It should measure exactly 2 cm.



PIAGET

SIZING GUIDE

BRACELETS



HOW TO MEASURE YOUR WRIST SIZE

- Cut out the ruler on the right hand side of the page. Make a slit in the ruler as indicated.
- Insert the pointed end of the ruler into the slit to form a loop, making sure the numbers are facing outwards. Insert your wrist into the loop. Pull on the pointed end to tighten it to a comfortable fit around your wrist, as tight or loose as you like.
- Make a note of the number at the slit: this is your bracelet size.
- You can also use a measuring tape or a length of ribbon or cord. Wrap it around your wrist and then measure the length with a ruler.



HOW TO SELECT YOUR SIZE FOR A BANGLE:

We use a different measuring system to size for bangles (bracelets without a clasp), so we suggest that you visit a Piaget boutique to determine your size.

Our advisors are happy to assist you with your questions. Please contact our concierge at **1-877-8PIAGET** or email **concierge.usa@piaget.com**.

The Piaget wrist sizer is intended for indicative use. Under no circumstances should the measurement be construed as your exact bracelet size.

PIAGET

SLIT
HERE