

# TINKER CREEK GREENWAY EXTENSION

## CONCEPTUAL LAYOUT



Prepared by:  
Roanoke Parks and Recreation Planning  
01/16/17

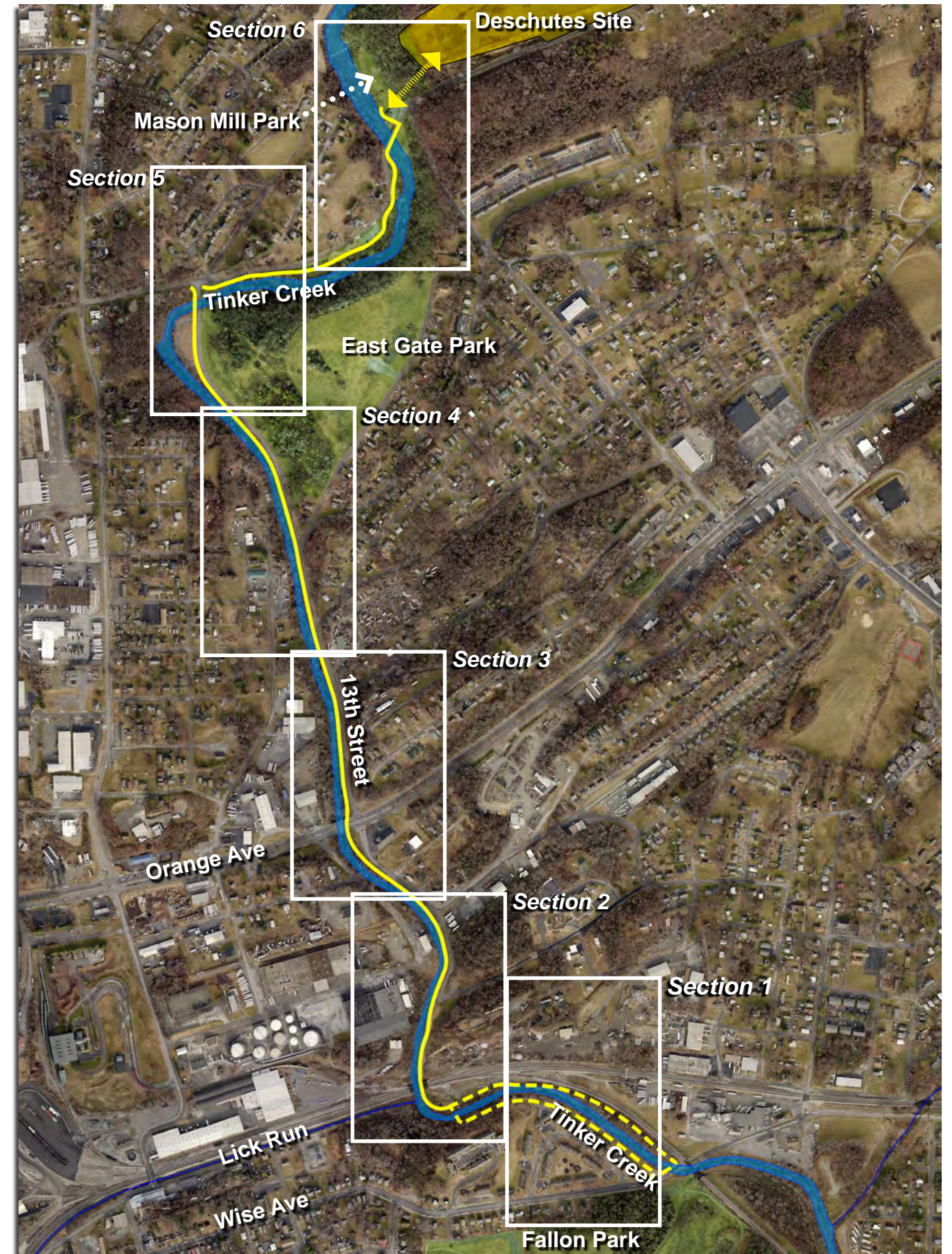


## TINKER CREEK GREENWAY EXTENSION

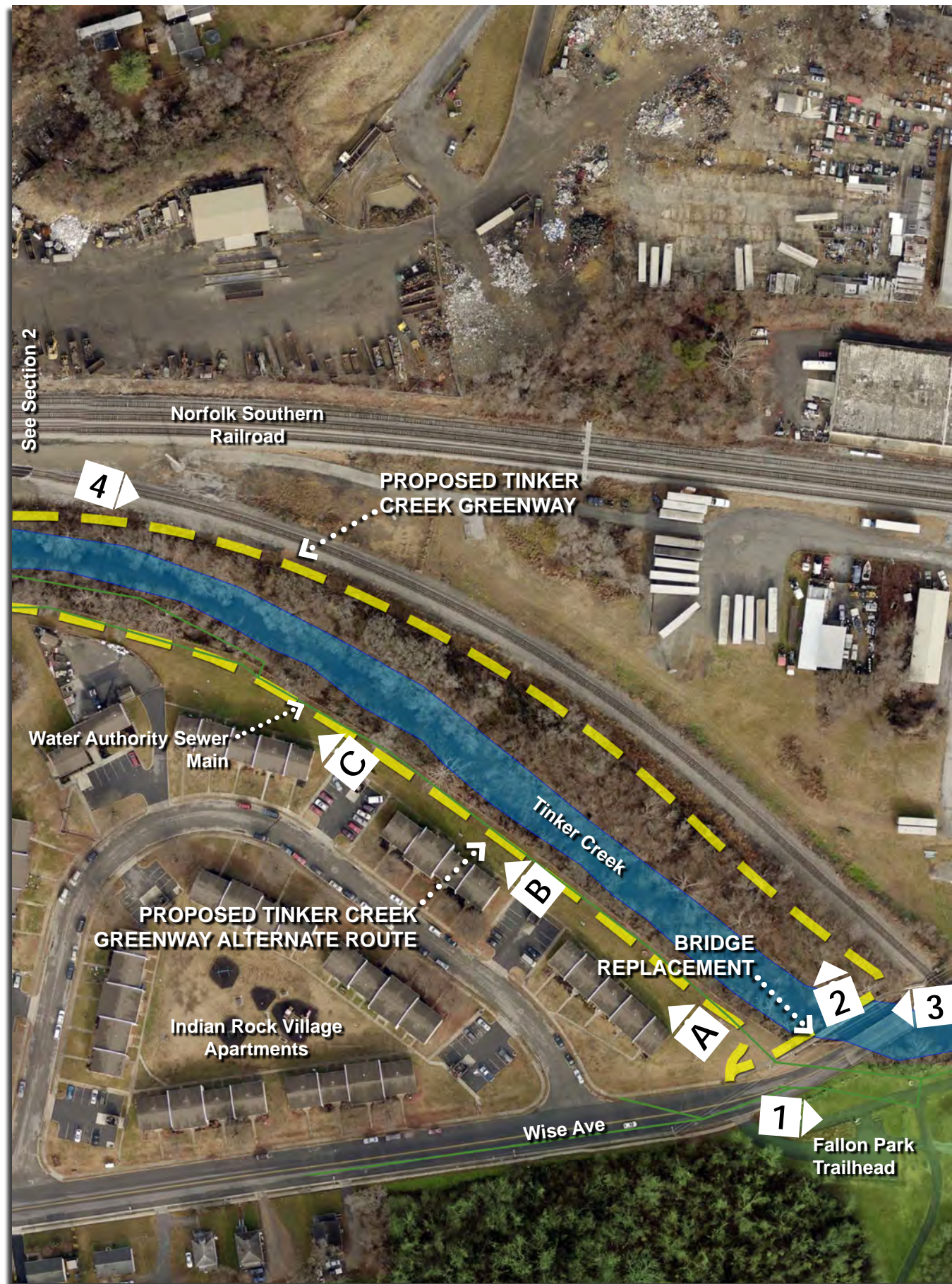
- Connects Fallon Park trailhead to Mason Mill Park and the Deschutes site
- Trail width- 10'
- Materials- asphalt and concrete (bridge crossings)
- Located in the Tinker Creek floodway
- Total new greenway length- 2 miles



SITE CONTEXT



OVERALL PLAN



**SECTION ONE**



**SITE PHOTOS**





**NEW/ REPLACEMENT BRIDGE CHARACTER**



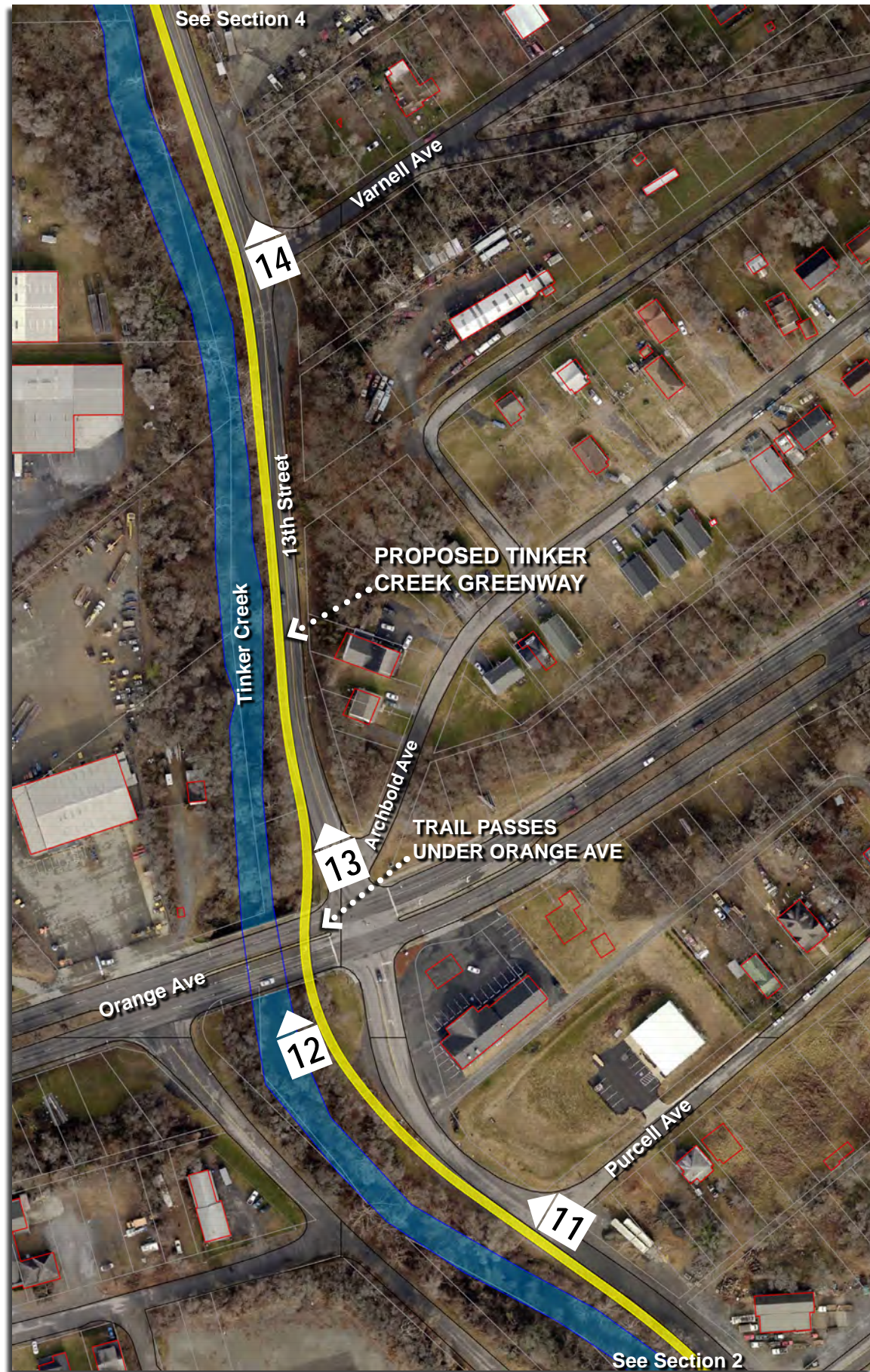
**SECTION TWO**



**SITE PHOTOS**



**CREEK EDGE CHARACTER AT CRITICAL SLOPE CONDITIONS**



**SECTION THREE**



**SITE PHOTOS**



**SECTION FOUR**

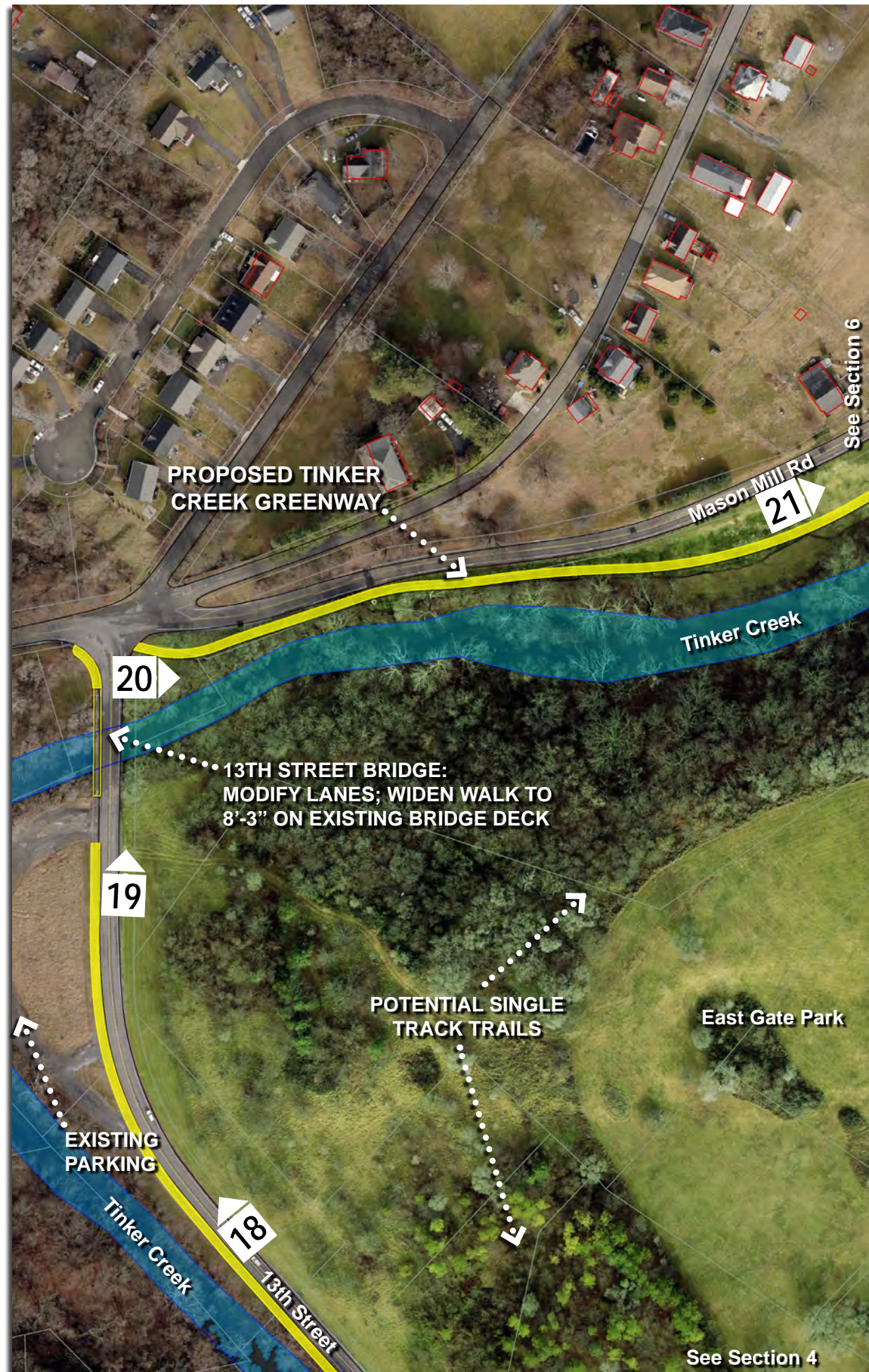


**SITE PHOTOS**





ROAD EDGE CHARACTER



**SECTION FIVE**





13th Street Bridge



Mason Mill Bridge

POTENTIAL BRIDGE MODIFICATIONS FOR TRAIL CROSSINGS



SECTION SIX



SITE PHOTOS



**TRAIL CHARACTER- MASON MILL AND EAST GATE PARKS**