

FACILITIES ASSESSMENT REPORT

2019



LPDA
LANDSCAPE ARCHITECTURE
LAND PLANNING

pros consulting
Inc.
Inspiring Communities to Action



ACKNOWLEDGEMENTS

Parks and Recreation

Michael Clark, CPRP, Director of Parks and Recreation
Dan Henry, Parks Manager
Donnie Underwood, Planning and Development Administrator
Renee Powers, Trails and Greenways Supervisor

CONSULTING TEAM

PROS Consulting INC.

Neelay Bhatt, Principal Consultant and Project Lead
Leon Younger, Strategic Consultant
Sarah Durham, Project Consultant
Brayton McClure, Project Consultant

LPDA

Bill Mechnick, Principal

TABLE OF CONTENTS

CHAPTER ONE - PARK AND FACILITY ASSESSMENTS.....	3
1.1 METHODOLOGY	3
1.2 SUMMARY OF FINDINGS.....	4
1.3 MINI PARKS AND PLAZAS	8
1.4 NEIGHBORHOOD PARKS	14
1.5 COMMUNITY PARKS	45
1.6 REGIONAL PARKS	75
1.7 NATURAL AREAS	86
1.8 GREENWAYS.....	103
1.9 SCHOOL FACILITIES	110

CHAPTER ONE – PARK AND FACILITY ASSESSMENTS

Park properties and facilities are the physical backbone of the parks and recreation system which support and facilitate all programming, user experiences, and access to recreational opportunities. It is paramount that these properties and facilities be well maintained, meet current standards, and accommodate the highest and best use. The upkeep, repair and improvements to existing facilities should be a top priority for the City. Periodic assessment of their physical condition is critical to the Department’s ability to budget and implement priority repairs and improvements in an organized and timely manner.

1.1 METHODOLOGY

LPDA performed and facilitated the assessment of physical conditions of City operated parks and facilities used for recreation. The objective of the assessments was to identify and quantify conditions which ultimately have a direct effect on the quality of programming, user experiences, and the public health, welfare, and safety.

Most, if not all, City parks and facilities should be accessible to all potential users, so it is important for these locations to adhere to the guidelines set forth by the Americans with Disabilities Act (ADA). An ADA Audit should be performed if there is any doubt as to whether certain facilities are ADA-compliant. Although this project does not include a Federal-level ADA audit, the LPDA team did note whether parks and facilities appear to be universally accessible or if certain areas are lacking. The park evaluation sheets include a section that covers general ADA-compliance (Entire park, 1-2 areas, some portions, none of the park). ADA checklists were completed for each park and facility. Those checklists informed the narrative in each park summary. In the summary of each park or facility we explain specific issues that were prevalent, obvious, or endemic to that park. This would include;

- Lack of ADA parking and code curb ramps
- Lack of accessible paths (width, surface, grade issues)
- Lack of access to shelters, comfort stations, and buildings (not all shelters required)
- Substandard access ramps (lack of railing, landings etc.)
- Lack of accessible routes in facilities to restrooms and gathering spaces
- Lack of accessible path and ramp device to play areas, lack of accessible surface
 - According to the USA Access Board standards, an ADA compliant playground must exhibit three attributes (simplified here). It must 1) have an accessible route. This includes an ADA compliant pathway from an ADA parking space as well as a ramp or playground entrance feature that is ADA compliant, 2) a ground surface that is ADA compliant (well-maintained stable and firm surface, compliant with ASTM F1951), and 3) at least one of each ground-level play component should be accessible.

Assessment forms were customized to gather specific information. Facility (building), park, and trail assessments were performed by LPDA staff, with over 40 years combined experience with conditions assessments and facility planning, with assistance from Roanoke City Parks and Recreation staff. The team inventoried park, trail, and facility features, such as infrastructure, parking, and amenities, and then evaluated their condition using a numeric scoring system. The scores for all categories were added together, to yield the total score for the condition. The locations which were in the worst condition yielded the highest scores.

Park conditions were assessed on a scale of (0) to (4) in a range of categories. A score of (0) indicates no concerns, and a score of (4) indicates immediate major problems. The categories are: vehicular access, ADA accessibility, parking availability, parking facilities, personal safety, sidewalks/paths/trails, neighborhood linkages/connections, ball fields, turf, storm water drainage systems, irrigation systems, landscaping (ornamental and natural), general cleanliness/appearance, equipment (playground, backstops, hoops, etc.), and hard courts (tennis, basketball, etc.) The maximum total score possible for a park to receive is 60, which would indicate that there are immediate major problems in every category evaluated.

Trail conditions were assessed on a scale of (0) to (4) in a range of categories. A score of (0) indicates no concerns, and a score of (4) indicates immediate major problems. The categories are: access conditions, ADA accessibility, parking availability, parking facilities, personal safety, trail tread condition, amenities, neighborhood linkages/connections, general cleanliness/appearance, and signage. The maximum total score possible for a trail to receive is 56, which would indicate that there are immediate major problems in every category evaluated. Trail evaluations are divided into two categories: trails within parks, and greenways (linear parks). The scoring is the same for both categories, but the trails within parks will be combined with the overall score of the Park. Whereas Greenways will be scored as separate linear parks.

Facility conditions were assessed on a scale of (0) to (4) in a range of categories. A score of (0) indicates no problems, and a score of (4) indicates immediate major action needed. The categories are: overall facility conditions, vandalism, offices, ADA accessibility, mechanical equipment, security, adequacy of space, parking, gymnasium, auditorium, storage areas, kitchen, classrooms, and interior lighting. The maximum total score possible for a facility to receive is 56, which would indicate that there are immediate major problems in every category evaluated. Space was also provided on the forms for reviewers to note specific observations that were not encompassed by any category, or to expand in further detail about the conditions of a category. These observations are incorporated in the assessment narrative as well as recommendations for each park and facility.

1.2 SUMMARY OF FINDINGS

The scores for the condition of the facilities ranged from 24 for Eureka Recreation Center, with the most condition issues, to 0 for Lincoln Terrace Elementary School and RAMS Elementary School, which both had the least condition issues. The highest possible score for a facility is 56. The scores for the condition of the parks ranged from 35 for Highland Park, with the most condition issues, to 6 for Ghent Hill, Vic Thomas, and Valley Avenue parks, all found to have the least condition issues. The highest possible score for a park is 60. The scores for the condition of the greenways (linear parks) ranged from 31 for Murry Run Greenway, with the most condition issues, to 9 for Garden City Greenway, with the least condition issues. The highest possible score for a greenway is 56.

The facility with the most condition issues is Eureka Recreation Center. The primary issue is deferred maintenance, as evidenced by the inadequate exterior lighting, poor condition of the gymnasium floor, old and dysfunctional ventilation system, and leaking skylights. Other issues are lack of activity space and storage space, and general obsolescence.

Highland Park has the greatest number of condition issues in a park. The high score is due to an aggregation of many issues, such as lack of ADA access, lack of sufficient parking, poor condition of amenities, and poor condition of lawn.

Murray Run Greenway has the most condition issues in a greenway. The trail is eroded in several places, it is un-even and the gravel surfacing is migrating downhill, one bridge is not to code, there are several unofficial trails without proper signage, and existing signs are in poor condition.

Over the course of assessing the condition of the parks, greenways, and facilities, several issues were noted as reoccurring in multiple places. Note: * items indicate Roanoke City Public Schools (RCPS) Common owned fields and/or gymnasiums. The Parks and Recreation Department does not manage school-owned facilities. Deficiencies include:

1.2.1 FACILITIES

- Inadequacy of space type/layout to meet programming needs
- Inadequate storage space
- Deferred maintenance and updates

<i>Facility Name</i>	<i>Score</i>
Eureka Rec Center	24
Booker T. Washington Admin. Bldg.*	22
Garden City Rec Center	20
Mountain View Rec Center	18
Preston Park Rec Center	15
Grandin Court Rec Center	14
Mill Mountain Discovery Center	12
Fallon Park Pool	10
Booker T. Washington Park Pool	10
Norwich Rec Center	7
Addison Middle School*	6
John P. Fishwick Middle School*	5
Woodrow Wilson Middle School*	5
Highland Park Elementary School*	4
Thrasher Rec Center	4
Breckinridge Middle School*	2
Crystal Springs Elementary School*	2
Fishburn Park Elementary School*	2
Fallon Park Elementary School*	1
Garden City Elementary School*	1
James Madison Middle School*	1
Preston Park Elementary School*	1
Round Hill Elementary School*	1
Lincoln Terrace Elementary School*	0
RAMS Elementary School*	0

1.2.2 GREENWAYS (LINEAR PARKS)

- Lack of ADA access
- Inconsistent signage
- Lack of or poor condition of trail amenities (benches, trash receptacles, bike racks, etc.)

<i>Greenway Name</i>	<i>Score</i>
Murray Run Greenway	31
Mill Mountain Greenway	22
Roanoke River Greenway - Bridge Street to Smith Park	22
Roanoke River Greenway - Blue Ridge Dr. to Aerial Way	20
Roanoke River Greenway - Water Treatment Plant to Smith Park	14
Lick Run Greenway	13
Tinker Creek Greenway	11
Garden City Greenway	9

1.2.3 PARKS

- Limited or lack of ADA accessibility
- Damaged sidewalks or paths
- Aging, outdated, or damaged site furnishings
- Bare turf patches

<i>Park Name</i>	<i>Score</i>
Highland Park	35
Villa Heights Park	34
Garden City Park	33
Booker T. Washington Park	30
Eastgate Park	30
River's Edge Sports Complex	29
Belmont Park	27
Strauss Park	27
Morningside Park	25
Shrine Hill Park	25
Mason Mill Park	24
West End Park	24
Fishburn Park	23
Golden Park	23
Horton Park	23
Staunton Park	22
Eureka Park	21
Mill Mountain Park	21
Fallon Park	20
Gateway Park	20
Preston Park	20
Raleigh Court Park	20
Thrasher Park	19
Hurt Park	18
Lakewood Park	18
Sunrise Park	17
Wasena Park	17
Andrews Park	16
Kennedy Park	16

Loudon Park	16
Ridgewood Park	16
Breckinridge Athletic Fields	15
Grandin Court Park	15
Smith Park	15
Brown Robertson Park	14
Carvins Cove - Bennett Springs	14
Fern Park	14
Westside Athletic Fields	14
Perry Park	13
Piedmont Park	13
Carvins Cove - Timberview	12
Countryside Park	12
Carvins Cove - Marina	10
Fishburn Park Elementary School*	10
Huff Lane Park	10
Norwich Park	10
Elmwood Park	9
James Madison Middle School*	9
Melrose Park	9
Preston Park Elementary School	9
Bennington Park	7
Bowman Park	7
William Fleming High School*	7
Ghent Hill Park	6
Valley Avenue Park	6
Vic Thomas Park	6

The tables above illustrate the assessment scoring of parks, greenways, and facilities. Those highlighted in red require the most attention due to severity of conditions or the number of items needing addressed. Refer to the individual park summaries in the detailed section below for identification of specific improvements and priority. It is important to note that even though a park may have scored well on overall conditions, there may be an issue such as inadequate ADA access or faulty equipment which requires immediate attention.

From this information, recommendations for capital improvements will be developed which focus on safety, code, and life cycle related deficiencies.

1.3 MINI PARKS AND PLAZAS

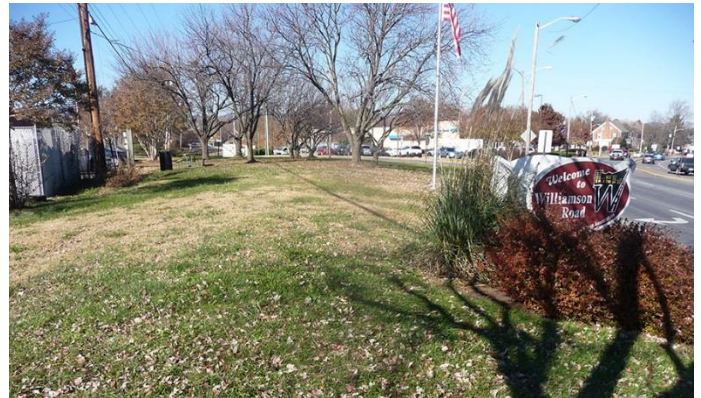
Andrews Park

Location: Williamson Road, NE

Size: 0.3 acres

Park Type: Mini Park

Andrews Park is a small green space located on the northwest corner of Williamson and Hershberger Roads in northern Roanoke. It is located behind a small shopping center and contains a picnic table. There is a commemorative plaque for Thomas Jefferson Andrews. The park is in fair condition; there are some bare spots in the grass and the table is unsightly, but structurally sound. There are old tires from the tire shop lying scattered along the edge of the park by the dumpster. None of the park is ADA accessible. City should consider transferring this area to Public Works as part of their right of way system. Because the space was named for a once prominent Williamson Road businessman, the name of the park could be used for the parkland surrounding Breckinridge Middle School and Williamson Road Branch Library. A master site plan should be developed for the new space.



Argonne Circle

Location: 340 King George Avenue, SW

Size: 0.7 acres

Park Type: Mini Park

Argonne Circle is a small lawn space located in the Old Southwest Neighborhood within the street right of way at the junction of King George Avenue and 4th Street SW. It has a commemorative plaque and two benches. The area is not suited nor programmed for public park use; rather, it serves as a portion of the street right of way.

Century Plaza

Location: 14 Church Avenue, SE

Size: 0.2 acres

Park Type: Plaza

Century Plaza is a brick-paved pedestrian alley that connects Church and Kirk Avenues, between Market Street and Jefferson Street in downtown Roanoke. It features closely spaced trees, shrubs, and benches. The plaza is in overall good condition except there is discoloration on the brick walls of the fountain. The plaza is ADA accessible. The City should consider developing a master plan for this plaza in order to create a more engaging space for downtown employees and visitors.

**Entranceway Park**

Location: 114 Wells Avenue, NE

Size: 0.7 acres

Park Type: Mini Park

Entranceway Park is a lawn area containing a large fountain located in downtown Roanoke at the intersections of Williamson Road, Wells Avenue, and Commonwealth Avenue. The fountain area, walkways, and lawn are all in good condition, and the walkway leading to the fountain is ADA accessible. The park should have a master plan created to become more functional as a park.



Gateway Park

Location: Orange Avenue, NE

Size: 0.5 acres

Park Type: Mini Park

Gateway Park lies within the street right of way at the corner of Orange Avenue and Williamson Road. This is another public space that does not function as a public park, but rather street right of way. It is recommended that the property be transferred to the Public Works Department for inclusion within their right of way system.



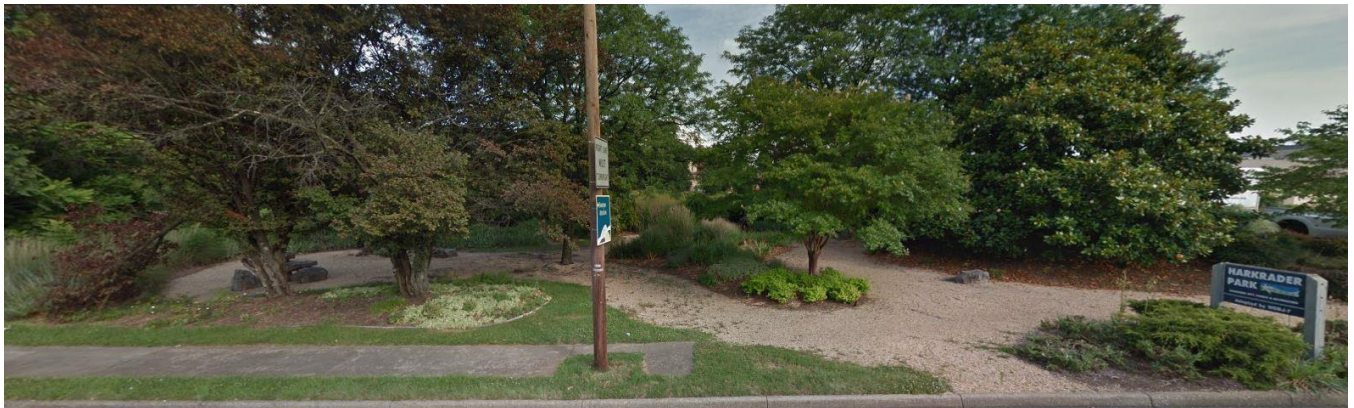
Harkradar Park

Location: 2002 Colonial Avenue, SW

Size: 0.4 acres

Park Type: Mini Park

Harkradar Park is a pocket park located on Colonial Avenue just south of where Brandon Avenue goes under US Highway 220. It is a small landscaped area with gravel pathways wrapping around small plant beds. The park appears to be clean and in good condition. It is not ADA accessible because the paths are loose gravel. This park was originally established for an adjacent business and their employees. The business is no longer in the vicinity and the public does not appear to be using the space. City should consider divesting the space from the system.



Holton Plaza

Location: Franklin Road, SE

Size: 0.5 acres

Park Type: Plaza

Holton Plaza is a pedestrian alley that connects Church Avenue and Franklin Road, between Williamson Road and Jefferson Street in downtown Roanoke. The plaza appears to be in good condition and is entirely ADA accessible. Recommend adding benches facing the fountain and within the alley.



Lee Plaza

Church Avenue, SW

Size: 0.5 acres

Park Type: Plaza

Lee Plaza is located along Church Avenue between 2nd and 3rd Streets in downtown Roanoke. It contains memorial war monuments and large plant beds with benches spaced along the walkways. The entire plaza is ADA accessible. There are wide steps along the east side, but the memorial can be accessed via the walkways on the other side. The entire park appears to be in good condition and not in need of anything.



Market Square Park

Location: Market Street, SE

Size: 0.3 acres

Park Type: Plaza

Market Square Park consist of two small brick-paved plazas, one on either side of Market Street, at the intersection of Market Street and Campbell Avenue in downtown Roanoke. The plazas are surrounded by shops, cafes and businesses, and are used regularly throughout the year for farmer's markets. There are two long shelters, one at each plaza,



with tables under them for use by vendors. The plaza is in good condition overall, and the entire plaza is ADA accessible. This park lacks the standard colors and visual branding typical of Roanoke parks. City should update the amenities, signage, and color palette to the Parks and Recreation standards.

Triangle Park

Location: Kerns Avenue, SW

Size: 0.2 acres

Park Type: Mini Park

Triangle park is a triangle-shaped lawn space, bordered by Kerns Avenue, Hamilton Avenue and Oak Park Street in central Roanoke, right across the street from Valley Avenue Park. It has two picnic tables, two trash receptacles, a concrete bench, and several concrete planters. The tables and receptacles are old but in fair condition, and the lawn is in good condition. None of the park space is ADA accessible. This space functions mostly as street right of way and the City should consider transferring the space to the Public Works Department for management.



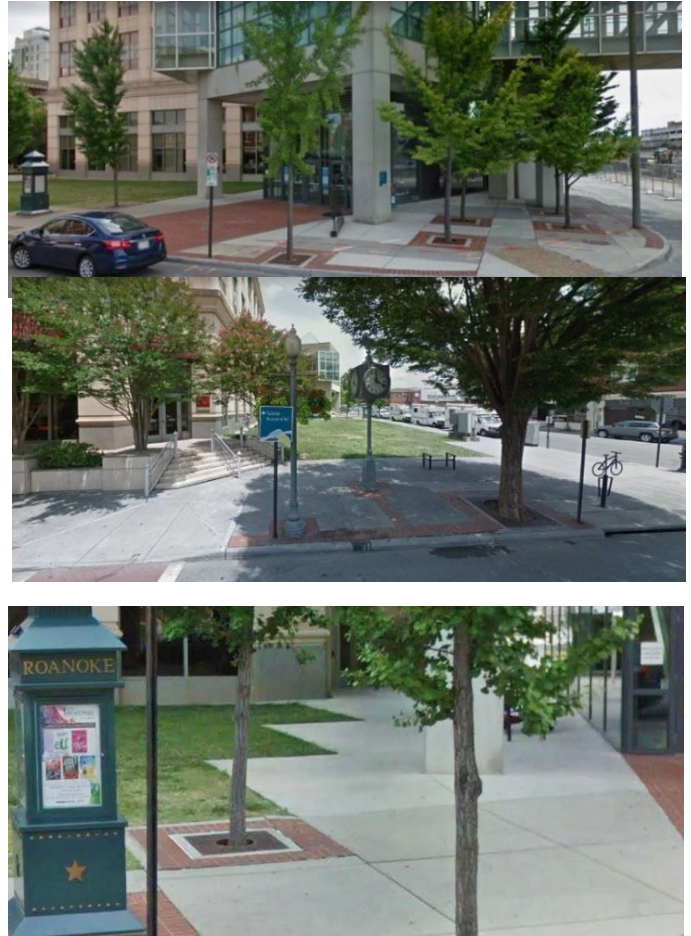
Wells Fargo Plaza

Location: 10 South Jefferson Street, SE

Size: 0.5 acres

Park Type: Plaza

Wells Fargo Plaza is located on the east side of the Wells Fargo Bank, facing Market Street. At the north end is a concrete and brick-paved entranceway into the bank, with tree pits, a sculptural sign, and a kiosk. At the south end the concrete sidewalk widens and there is a decorative bicycle rack and steps leading into the bank. A rectangular lawn space sits between the two entrances. This is the location for the City's annual Christmas tree. Everything appears to be in good condition except for a piece of the concrete border around one of the tree pits is broken. However, the plaza would benefit from a new master plan in order to better serve the downtown area and visitors. The plaza is ADA accessible.



1.4 NEIGHBORHOOD PARKS

Bennington Park

Location: Bennington Street, SE

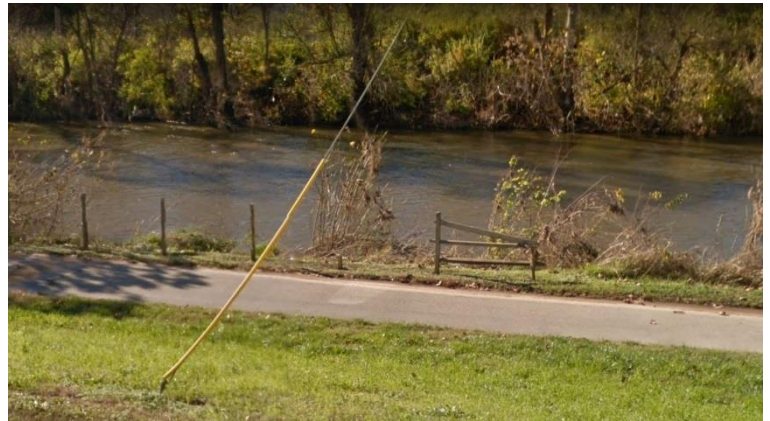
Size: 2.3 acres

Park Type: Neighborhood

Features:

- Greenway trail

Bennington Park is located along Bennington Street and the Roanoke River in southeast Roanoke. The Roanoke River Greenway runs through the park.



ADA issues:

- The permeable pavers need to be maintained to be a level and stable surface

Key deficiencies needing attention:

- Old rusty section of guardrail by the access path



Priority Recommendations:

- Remove the guardrail section.
- Develop a standard for trail bench locations
- Incorporate into the Roanoke River Greenway system.



Bowman Park

Location: 2719 Hillcrest Avenue, NW

Size: 2.0 acres

Park Type: Neighborhood

Features:

- Picnic shelter
- Playground
- Open space



Bowman Park is located on Hillcrest Avenue, just east of Bowman Street within a large residential area in northwest Roanoke. It receives heavy use by young children. Most of the park space consists of an open mowed field that is not graded for organized sports. The park may benefit from adding an ADA accessible loop path with exercise equipment and planting more trees throughout the field and along the loop path for increased shade and visual appeal.

ADA issues:

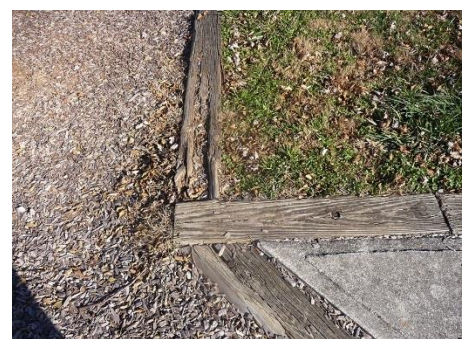
- There is a concrete walkway leading from the street to the picnic shelter and playground, but there is no access ramp at the curb
- There is too much drop at the edge of the playground to be ADA compliant and there are no accessible pieces of play equipment.

Key deficiencies needing attention:

- Timber edging around the playground is old and rotting
- The bollard posts around the park are very old and rotting and some are leaning over
- Open field is underutilized

Priority Recommendations:

- Replace timber edging around playground
- Install ADA ramp into playground and some accessible pieces of play equipment
- Replace bollard posts around the park
- Install ADA curb ramp at the walkway leading into the park
- Construct an ADA accessible loop path around the open field. Plant trees throughout the field and along the path
- Add benches along the trail



Brown-Robertson Park

913 NW Shadeland Avenue, NW

Size: 10.8 acres

Park Type: Neighborhood

Features:

- Picnic shelter
- Playground
- Basketball court
- Open space and trails (greenway)

Brown Robertson Park is a large neighborhood park located in northwest Roanoke off 10th Street and just west of Washington Park.

ADA issues:

- There are no ADA walkways to park amenities
- While there is an ADA ramp leading into the playground, there is no walkway leading to it, and there are no accessible pieces of play equipment



Key deficiencies needing attention:

- Cracks in pavement of basketball court
- Large bare dirt area from the back of the park to the picnic shelter.
- No parking within the park and all park amenities are far back from the road.
- Park circulation and amenity locations are poorly designed

Priority Recommendations:

- Rehabilitate basketball court
- Construct ADA walkways to all park amenities
- Establish and maintain lawn in desired areas
- Create a master plan for the park focused on improving use and functionality

Fern Park

Location: 2875 South Jefferson Street, SE

Size: 9.1 acres

Park Type: Neighborhood

Features:

- Playground
- Open space and trails



Fern Park is accessed from the corner of Jefferson Street and Cornwallis Avenue within a residential area in south Roanoke. The park is mostly comprised of wooded open space along Yellow Mountain Road. A trail runs the full length of the park and loops back to Yellow Mountain Road. There is a small playground and some benches and picnic tables by the park entrance.

ADA issues:

- There are no walkways within the park
- Playground is not ADA compliant. There is no walkway leading to it and there are no accessible pieces of play equipment.



Key deficiencies needing attention:

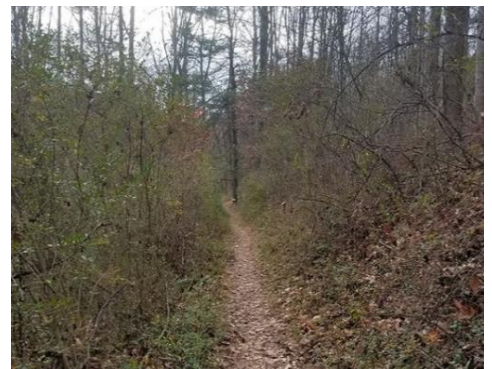
- Park entrance in poor condition. Broken concrete pad and curb, wood posts are broken and rotting
- Bare dirt areas and erosion in front of trailhead and around playground
- Graffiti on playground equipment

Priority Recommendations:

- Enhance park entrance area. Repair or replace concrete pad and curb, replace wood posts
- Address erosion and reseed bare areas at trailhead and playground
- Clean graffiti off play equipment
- Construct an ADA accessible path to playground area

Fern Park Trails

Fern Park Trail is a natural surface 0.6-mile trail within Fern Park that connects southern Roanoke neighborhoods to the National Park Service's Blue Ridge Parkway Chestnut Ridge Trail, Mill Mountain Park trails, and the Blue Ridge Parkway. It receives moderate use spring through fall and light winter use, and it is in very good condition. The only issues are privet shrubs that need to be trimmed back every year because they grow over the trail, and although there is plant information signage, there is no trail use/regulation signage for the trail. A kiosk should be added at trail access points and within Fern Park.



Garden City Park

Location: 1304 Hillview Avenue, SE

Size: 4.6 acres

Park Type: Neighborhood

Features:

- Picnic shelter
- Playground
- Softball field
- Tennis court
- Multi-use field
- Restroom



Garden City Park is an older neighborhood park located off Hillview Avenue just behind Garden City Elementary School. It has a softball field and playground that get a fair amount of use and a tennis court that is in very poor condition and doesn't get used at all.

ADA issues:

- The paved walkway to the restroom and tennis courts is too steep to be compliant
- There is a step at the restroom concrete pad that compromises accessibility and presents a trip hazard
- Playground does not have any accessible pieces of play equipment.



Key deficiencies needing attention:

- Lawn drains onto softball field
- Picnic shelter very old and in poor condition
- Playground very old and in bad condition. Metal floor is broken and rusted making it unsafe for use.
- Tennis court very old and in poor condition; doesn't get used
- Multi-use field at back of park is very far from parking and not ADA accessible



Priority Recommendations

- Construct a drainage channel to keep water from draining from lawn onto softball field
- Replace picnic shelter
- Replace playground equipment
- Consider removing tennis court and repurposing that space
- Reroute path at restroom to be ADA compliant
- Install an ADA ramp into playground area
- Eliminate concrete step in front of restroom
- Extend paved pathway to multi-use field

Garden City Recreation Center

Location: 3700 Yellow Mountain Road, SE

Facility Type: Recreation Center

Features:

- Auditorium
- Classrooms
- Office
- Kitchen
- Storage
- Playground (outside)

Garden City Recreation Center is in Garden City in southeast Roanoke, on Yellow Mountain Road. The facility is an old building that use to be a school before it was given to the City in the 1920s. It receives light use throughout the year, mostly for cultural arts, line dancing, and some event rentals. There is a considerable number of personal items being stored in the building (from the previous manager and her family). There is a small playground with a couple benches and a basketball court behind the building that receive no use. The facility needs renovation and updates in order to become a destination place for activities such as art studios, various classes, and larger events.

ADA issues:

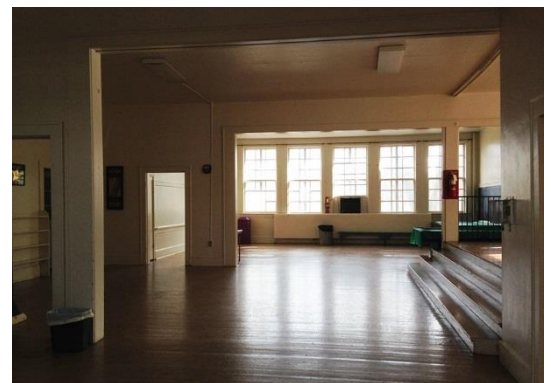
- The facility is mostly ADA accessible, however certain areas require renovation and/or improvements
- There is no walkway leading to the playground and there are no accessible pieces of play equipment

Key deficiencies needing attention:

- Metal railing at the front door needs to be replaced
- Exterior and interior lighting is outdated and inadequate
- HVAC system is old and needs repair or replacement
- Kitchen is small and may need to be expanded for future use
- Cluttered and cramped in some areas due to personal items stored throughout the building
- Facility is not conducive to the needs of a modern community recreation center

Priority Recommendations:

- Replace metal railing at front door
- Replace exterior and interior lighting to meet modern standards
- Repair or replace HVAC system or components to meet facility needs



- Consider expanding kitchen to meet potential future needs
- Remove personal items to make additional space for increased uses
- City should revise the mission for the facility and renovate accordingly (consider an artisan center)
- Consider adding space for active recreation, amenities such as a small gym or multipurpose room larger than the current one.



Ghent Hill Park

Location: Wasena Avenue, SW

Size: 11.8 acres

Park Type: Neighborhood

Features:

- Open space
- Portion of the Roanoke River Greenway trail
- Picnic table

Ghent Hill Park is located along the south side of the Roanoke River at Wasena Avenue and Memorial Avenue, across the river from Vic Thomas Park and west of Wasena Park. It is an unprogrammed open space with mowed grass and trees, a picnic table, and views of the river, and a portion of the Roanoke River Greenway.

ADA issues:

- Picnic table is not accessible

Key deficiencies needing attention:

- Bare spots in the lawn and a social path along the tree edge above the river

Priority Recommendations:

- Reseed bare spots in grass
- Construct a stone dust path along the tree edge between Winona Avenue and where the sidewalk ends at the stone wall just west of the picnic table. Place a couple benches along the path.
- Encourage future street improvements to current sidewalks from Winona to Memorial Bridge.
- Incorporate into Roanoke River Greenway system.



Golden Park

Location: 1566 Carlisle Avenue, SE

Size: 3.9 acres

Park Type: Neighborhood

Features:

- Picnic shelter
- Playground
- 2 basketball courts
- Multi-use field



Golden Park is located in southeast Roanoke off Carlisle Avenue and Spruce Street. It is bordered by houses on one side and industrial use on the other three sides. The local neighborhood doesn't use the park very much, but people come from other areas on weekends to have cookouts and play soccer. The two old tennis courts were repurposed to new basketball courts which now get used, but the old basketball court does not get used and is in poor condition.



ADA issues:

- Playground is not ADA compliant because there is too much drop at the edge to the mulch surface.

Key deficiencies needing attention:

- Old basketball court is in poor condition and doesn't get used
- Some of the walkways are in poor condition with large cracks, unevenness and grass growing through



Priority Recommendations:

- Confirm lack of use and remove old basketball court and return space to open park space
- Repair or repave walkways
- Install ADA ramp at playground
- Continue the Roanoke River Greenway trail through the park and remove bollards



Grandin Court Park

Location: 2621 Barham Road, SW

Size: 0.9 acres

Park Type: Neighborhood

Features:

- Playground
- Basketball Court
- Recreation Center

Grandin Court Park is a small neighborhood park centrally located within a large residential area in southwest Roanoke at Barham and Lofton Roads. It contains a playground, one basketball court, and a small recreation center. The park receives moderate use spring through fall and light use in the winter.

ADA issues:

- There is no walkway to the playground or basketball court, and the gravel parking lot is not stable and even
- There are no accessible pieces of play equipment

Key deficiencies needing attention:

- Basketball courts are in poor condition. Pavement is rough, has cracks, and there is discoloration
- Neighboring house to the north of the park is very close to the park and there is inadequate vegetative screening

Priority Recommendations:

- Rehabilitate basketball court to the City standard
- Provide a privacy hedge or vegetative screen between park and adjacent house
- Pave the ADA parking spaces and construct a paved walkway to the basketball court and playground
- Address drainage issues in parking area and surrounding the basketball court



Grandin Court Recreation Center

Location: Grandin Court Park, 2621 Barham Road, SW

Facility Type: Recreation Center

Features:

- Gymnasium
- Classrooms
- Kitchen

The Recreation Center at Grandin Court Park is an old school that contains a very small gym area, several activity rooms, and a kitchen. The center is used for after-school activities, dance classes for young children, exercise classes, and event rentals. It receives moderate use during the school year (fall through spring) and very little use during the summer. The facility is in fair condition structurally, though it is not an ideal building to be used as a recreation center, as it is unable able to handle the diversified activity demands, after-school programs, etc.

ADA issues:

- There is an ADA ramp leading from the parking area into the building, but the gravel parking lot is not currently ADA compliant due to the lack of regular scheduled maintenance to maintain it as a firm, smooth, and stable surface.

Key deficiencies needing attention:

- Not enough activity space to accommodate peak program interest
- Inadequate storage space
- Kitchen cabinetry is structurally flawed and sagging

Priority Recommendations:

- Consider renovating the center to bring it up to modern standards and add space for active recreation, items such as a small gym or multi-purpose room larger than the current room. Retain the property as a neighborhood park
- Adjust or replace cabinet drawers in the kitchen
- If possible, pave the parking lot. If this is not cost effective, pave the ADA parking spaces and access walkway



Horton Park

Location: 2500 Salem Turnpike, NW

Size: 4.2 acres

Park Type: Neighborhood

Features:

- Picnic shelter
- Swings
- Softball field
- 2 basketball courts



Horton Park is located on Salem Turnpike, next to Melrose Branch Public Library. Parking for the park is shared with the library parking. The park is located directly across the street from local government housing and there is no safe crossing between the two. The Roanoke Valley's Goodwill Training Center abuts park property.

ADA issues:

- None of the park amenities have walkways leading to them

Key deficiencies needing attention:

- Softball field in poor condition. There is grass on the infield and the fence is badly damaged. It is not programmed and unused.
- Basketball court has some cracks in pavement and needs new striping
- Graffiti painted on the concrete floor of the picnic shelter and shelter itself is old and unused
- Drinking fountain is very old and appears non-functional

Priority Recommendations:

- If softball field doesn't get used, remove fence and repurpose this space. Otherwise, repair fence and restore the dirt infield.
- Rehabilitate basketball court to City's standard
- Remove or paint over graffiti on picnic shelter floor
- Replace drinking fountain
- Construct ADA compliant walkways leading to the picnic shelter, swings and basketball court and install an ADA swing
- Develop new Master Plan for the park to meet neighborhood park standards
- Develop safer street crossings to park



Hurt Park

Location: 1525 Salem Avenue, SW

Size: 0.7 acres

Park Type: Neighborhood

Features:

- Basketball court



Hurt Park is the name of the local neighborhood community as well as being the name of the local elementary school located on Salem Avenue. Parks and Recreation operates a small portion of the property, a single basketball court. The remaining 95% of the property is operated by Roanoke City Public Schools.

ADA issues:

- The basketball court is not ADA accessible due to the lack of an accessible route.

Key deficiencies needing attention:

- Basketball court in poor condition with large cracks

Priority Recommendations:

- Due to the proximity of Perry Park and the Hurt Park elementary school (and related open space), it is recommended that the basketball court be turned over to the school system while the Department concentrates its efforts on the neighborhood park two blocks away on Norfolk Avenue.



Kennedy Park

Location: 1616 19th Street NW, Roanoke, VA

Size: 22.6 acres

Park Type: Neighborhood

Features:

- Picnic shelter
- Open space with trails



Kennedy Park is a large neighborhood park located in northwest Roanoke north of Orange Avenue at 19th Street and Carroll Avenue. The park consists primarily of mowed open space. There is a small memorial to Dr. Lylburn Downing, two parking lots, and a large asphalt court with no equipment. The west side of the park has a picnic shelter surrounded by large trees and a network of partially paved pathways.



ADA issues:

- The picnic shelter and paved paths are accessible only from the church parking lot, not from within the park
- No other park amenities are connected to ADA paths



Key deficiencies needing attention:

- Asphalt court is in very poor condition and appears unused. There are large cracks in the pavement, the perimeter fence is damaged, and there is no equipment.
- One parking lot is being used for wood chip storage in view of park use
- Paved pathways and concrete walkways have cracks with grass growing through
- Concrete floor at picnic shelter is cracking
- Large amount of non-programmed mowed space



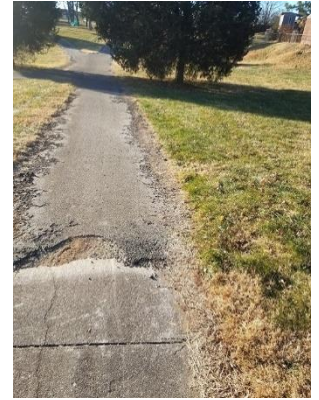
Priority Recommendations:

- Remove or repurpose unused hardcourt
- Patch/repair cracks in walkways
- Patch/repair cracks in concrete floor of picnic shelter
- Create additional program uses for the park's open space, such as disc golf, or consider establishing a wildflower meadow
- Screen or eliminate maintenance and storage areas



Kennedy Park Trails

The trails at Kennedy Park are a combination of asphalt and concrete paths that are about 5 feet wide that traverse through the open fields of the park, leading to the park's picnic shelter and connecting to the church to the south and the RAMS school to the northeast. The trails total about 0.7 miles in length and receive moderate use during spring, summer and fall and light use in the winter. They are in poor condition, with several places where the asphalt or concrete is cracked or upheaved and other places where grass is growing through the pavement. This drastically reduces the ADA accessibility of the trail, which would otherwise be accessible. At the northwest corner of the park the asphalt trail ends about 50 feet short of the sidewalk. There is evidence of vehicles driving across the grass at Andrews Street, so installing bollards and signs may be necessary. There are no signs on the trail providing information on trail use or park regulations.



Loudon Park

Location: 827 Loudon Avenue, NW

Size: 1.2 acres

Park Type: Neighborhood

Features:

- Playground
- Basketball court
- Picnic shelter and restrooms



Loudon Park is located on Loudon Avenue between 8th and 9th Streets within a residential neighborhood in northwest Roanoke. The park has a playground, one basketball court, restrooms and a small open field.

ADA issues:

- The paved walkways throughout the park are not all stable and even
- There is too much drop at the edge of the playground to be ADA compliant and there are no accessible pieces of play equipment.



Key deficiencies needing attention:

- Basketball court pavement has large cracks and rough areas
- There is graffiti on the restroom doors and the concrete floor in front of the restroom
- There is erosion and bare dirt around the playground and restroom



Priority Recommendations:

- Repair cracks in pathways
- Replace and upgrade basketball court to the City standard
- Clean graffiti off restroom doors and floor
- Eliminate stand-alone picnic tables and design park to include City’s picnic platform standard with concrete pad, picnic table, grill, and trash receptacle
- Reseed bare area around playground and restroom



Mason Mill Park

Location: 1900 Mason Mill Road,
NE

Size: 8.9 acres

Park Type: Neighborhood

Features:

- Picnic shelter
- Open space with trails
- Historic mill and dam



Mason Mill Park is a small open space area located in northeast Roanoke where Mason Mill Road crosses Tinker Creek, just north of Eastgate Park. The water-powered mill wheel and flume are the park's most popular features aside from its renown trout fishing. There is a concrete dam upstream of the mill that provides the backfill to channel the water into the flume to power the once thriving mill. The water flume that carried the water from the dam to the mill runs along the east side of the park, however, is in a state of disrepair.



ADA issues:

- None of the park is ADA accessible. The parking lot is paved, but the path along the river is rough dirt and there is no walkway to the picnic shelter.

Key deficiencies needing attention:

- Trail at the parking lot is rough with loose gravel and some erosion from parking lot drainage
- Parking lot drains down the path and directly into the creek, causing path and bank erosion.
- Trash receptacles, picnic tables, and historical interpretive plaque are in poor condition
- Flume is clogged with sediment and debris, which cause the mill wheel to be inoperative



Priority Recommendations:

- Install a trench drain where the path meets the edge of the parking lot to capture water runoff and pipe it to a BMP
- Upgrade and improve the trailhead via the future Tinker Creek Greenway Project that will come through the park. Use Tinker trail project to improve ADA accessibility and establish an ADA fishing boardwalk
- Establish individual picnic concrete pads with table, grill, and trash receptacle. Remove old single tables from the park.

Melrose Park

Location: 1412 Melrose Avenue, NW

Size: 3.6 acres

Park Type: Neighborhood

Features:

- Picnic shelter and restrooms
- Playground
- 3 basketball courts

Melrose Park is a small neighborhood park located on Melrose Avenue between 14 and 15th streets. Centrally located within an old neighborhood, it serves as a focal point of its community. The basketball courts and playground are in good condition and get significant use. The back portion of the park is open space with large beautiful trees.

ADA issues:

- No walkway leading to the swings
- There is too much drop at the edge of the playground to be ADA compliant and there are no accessible pieces of play equipment.

Key deficiencies needing attention:

- Picnic shelter is old and in poor condition; wood columns have damage
- Bare grass between playground and shelter from people walking between them
- Pathway through park in poor condition and doesn't get used
- Basketball court doesn't have lights for night use

Priority Recommendations:

- Repair or replace picnic shelter and improve maintenance standards and frequency for the shelter and restrooms
- Install an ADA ramp leading into the playground and construct a compliant walkway to the swings. Consider adding an ADA accessible swing to the swings area.
- Install lights on basketball court



Mountain View Recreation Center

Location: 714 13th Street, SW

Facility Type: Recreation Center

Features:

- Auditorium
- Classrooms
- Library
- Kitchen
- Greenhouse



Mountain View Recreation Center is located in southwest Roanoke on 13th Street, just north of the Roanoke River and Vic Thomas Park. The building is an historic mansion that is used during the week for senior activities and on weekends for weddings, parties, and other event rentals. There is a large outbuilding that is used by the Department's horticulture group. The facility is in fair shape; however, there are several exterior cosmetic issues that should be corrected via the City's Facilities Management capital improvements program. Additionally, it is recommended that both an electrical and mechanical system audit be conducted, and results managed by the capital improvements program.

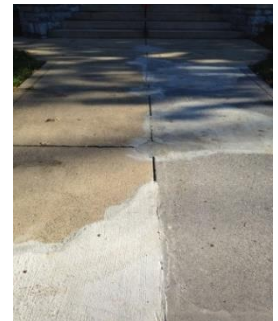


ADA issues:

- Portions of the center are ADA accessible

Key deficiencies needing attention:

- There are electrical issues inside the building and lighting is inadequate and outdated
- The wood banister around the porch is damaged and rotting
- The concrete walkway leading to the front entrance is very unsightly with large patched spots



Priority Recommendations:

- Address electrical issues. Update electrical system and interior lighting to meet modern codes.
- Repair or rebuild bannister around porch and replace concrete walkway in front of building
- Improve all parking areas to include stripped pavement with bumper blocks



Perry Park

Location: 1101 Norfolk Avenue, SW

Size: 2.9 acres

Park Type: Neighborhood

Features:

- Picnic shelter
- Playground
- Basketball court



Perry Park is located in southwest Roanoke on Norfolk Avenue between 11th and 12th Streets several blocks east of Hurt Park and Elementary School. It has a new playground, picnic shelter and basketball courts, though some of the picnic tables are old and in poor condition.

ADA issues:

- There are some large gaps in the walkways which would be problematic for wheelchairs
- The walkway does not extend to the playground and there are no accessible pieces of play equipment



Key deficiencies needing attention:

- Some erosion and bare dirt along edge of park



Priority Recommendations:

- Repair gaps in walkways
- Extend walkway to playground, add ADA ramp and some accessible play equipment
- Reseed bare spot along park edge



Piedmont Park

Location: 102 Riverview Boulevard, SE

Size: 0.9 acres

Park Type: Neighborhood

Features:

- Playground
- Roanoke River Greenway trailhead

Piedmont Park is a small neighborhood park in southeast Roanoke that is located at the north end of a small residential community, next to the Roanoke River. The Roanoke River Greenway trail runs along the edge of the park.

ADA issues:

- None of the park is ADA accessible other than the greenway trail that passes through it. There is no walkway to the playground.
- The playground mulch surface is in poor condition and there are no accessible pieces of play equipment

Key deficiencies needing attention:

- There are large potholes at the entrance into the parking area and the mesh under the gravel is showing through
- The timber edging around the playground is rotting.

Priority Recommendations:

- Pave and stripe the parking area at trailhead
- Replace timber edging around playground.
- Work with neighborhood to create a master plan for the park that contains standard neighborhood park amenities as per design standards



Preston Park

Location: 3137 Preston Avenue, NW

Size: 9.7 acres

Park Type: Neighborhood

Features:

- Playground
- Recreation Center
- 2 basketball courts
- 4 tennis courts
- Volleyball



Preston Park is a large neighborhood park located in northwest Roanoke at Preston Avenue and Winsloe Drive between Preston Elementary School and Breckenridge Middle School. There is a recreation center that receives regular use and a large amount of lawn area that receives almost no use.



ADA issues:

- Playground and basketball court are not accessible by ADA walkways
- The walkways connecting the tennis courts to the sidewalk have steps and a steep ramp
- There is too much drop at the edge of the playground to be ADA compliant and there are no accessible pieces of play equipment.

Key deficiencies needing attention:

- Tennis and basketball courts have large cracks in pavement
- Concrete walkways have large cracks and rough or broken spots. Concrete steps are very old and in poor condition
- Exterior restrooms are outdated and have no heat so are locked in winter
- Drinking fountain at restroom is in poor condition
- There is on-street parking which is not adequate for peak park needs
- Large bare dirt areas in lawn and considerable unused lawn space throughout park

Priority Recommendations:

- Patch cracks in basketball court and resurface tennis courts
- Repair cracks and damaged areas in concrete walkways. Rebuild concrete steps to meet current codes.
- Renovate exterior restrooms to be used year-round
- Replace drinking fountain
- Construct ADA accessible walkways from the park entrance points to the playground, basketball and tennis courts
- Reseed bare lawn areas and consider regrading to create level rectangular fields for sports use

Preston Park Recreation Center

Location: Preston Park, 3137 Preston Avenue, NW

Facility Type: Recreation Center

Features:

- Classrooms
- Kitchen
- Office
- Auditorium/event space

Preston Recreation Center is a recreation facility located at the north end of Preston Park that receives substantial use year-round. Most activities take place in evenings as after-school programs for children. On weekends the facility is often rented out for special events such as family reunions, baby showers, or wedding showers. The building is in pretty good condition and able to meet its program needs.

ADA issues:

- The recreation center is ADA accessible

Key deficiencies needing attention:

- Not enough parking
- Not enough storage space
- Needs better interior lighting
- Floor is outdated and in poor condition in some places
- No diaper changing station

Priority Recommendations:

- Implement the recommendations within the 2018 Preston Park Recreation Center Feasibility Study such that the current facility is brought up to code and the entire facility is renovated to meet current and modern community recreation center needs



Raleigh Court Park

Location: 2327 Windsor Avenue, SW

Size: 9.1 acres

Park Type: Neighborhood

Features:

- Playground
- 2 softball fields
- 2 tennis courts
- Basketball court

Raleigh Court Park is a large neighbor-hood park located in southwest Roanoke next to Woodrow Wilson Middle School off Windsor Avenue and Devon Road. It is centrally located within a large residential area.

ADA issues:

- There are no walkways within the park
- Playground is not ADA compliant. There is no walkway leading to it, the mulch surface is in poor condition, and there are no accessible pieces of play equipment.

Key deficiencies needing attention:

- Tennis courts in very poor condition with large cracks and a damaged fence
- Basketball court has large cracks in pavement
- Playground equipment is old and has rust in places
- The on-street parking is not near adequate for peak use
- There is no picnic shelter or restroom

Priority Recommendations:

- If tennis courts receive use, they should be resurfaced and repaired. If they do not get used, repurpose the court area
- Upgrade the basketball court to the City standard
- Replace outdated and damaged playground equipment as per the City's replacement rotation schedule
- Construct ADA accessible walkways to park amenities
- Add a picnic shelter



Ridgewood Park

Location: 720 Hemlock Road, NW

Size: 2.1 acres

Park Type: Neighborhood

Features:

- Picnic shelter
- Playground
- Loop trail



Ridgewood Park is located in a quiet residential area in northwest Roanoke on Hemlock Road across from the Ridgewood Baptist Church. It has a picnic shelter, playground, and a paved loop path around the park.

ADA issues:

- The paved path provides ADA access to the entire park.
- There is too much drop at the edge of the playground to be ADA compliant, the mulch is in poor condition, and there are no accessible pieces of play equipment.



Key deficiencies needing attention:

- Park sign is missing
- Several large cracks, holes, and rough spots in the asphalt path
- The shelter is not stable and will need to be replaced.



Priority Recommendations:

- Replace park sign
- Repair cracks, holes, and rough spots in asphalt path
- Repair outside lights
- Replace shelter



Staunton Park

Location: 2225 Staunton Avenue, NW

Size: 2.6 acres

Park Type: Neighborhood

- Features:
- Playground
- Basketball court
- Restrooms



Staunton Park is in northwest Roanoke at Staunton Avenue and 23RD Street surrounded by residential communities. It contains a playground, one basketball court, restrooms and some open lawn space. The north side of the park is a steep hill covered with large trees.

ADA issues:

- None of the park is ADA accessible and there are no walkways within the park
- There is no walkway leading to the playground and no accessible play equipment



Key deficiencies needing attention:

- Basketball court pavement is badly cracked
- There is substantial erosion and bare dirt on the steep hill behind the park
- Some of the timber edging around the playground is rotting and broken



Priority Recommendations:

- Rehabilitate basketball court to City standard
- City Stormwater Division should address stormwater on Mercer Avenue to keep stormwater from running off the street and down the hill
- Replace timber edging around the playground
- Develop a master plan for the park that addresses the community's needs



Sunrise Park

Location: 4225 Southern Hills Drive, SW

Size: 1.7 acres

Park Type: Neighborhood

Features:

- Playground
- Basketball court
- 2 horseshoe pits
- Open space



Sunrise Park is in south Roanoke on Southern Hills Drive, just east of Franklin Road. It is located within a small, low-density residential community and offers a small playground, one basketball court, and two horseshoe pits.

ADA issues:

- The pathway leading from the street to the basketball court does not have an access ramp at the curb and the path is not continuous all the way to the court
- The walkway leading to the playground is too steep to be compliant, there is too much drop from the edge to the mulch surface, and there are no accessible pieces of play equipment.



Key deficiencies needing attention:

- Walkways are very steep and walkway at basketball court is incomplete
- Basketball court pavement has cracks, discoloration, and chipping pavement
- Concrete pad under trash receptacle at the basketball court is uneven on top and separating from the edge of the court pavement
- Wooden frames around horseshoe pits are very old and have broken boards
- There are dislocated, and missing bumper stops in the parking lot
- The ADA parking signs are in the wrong place.

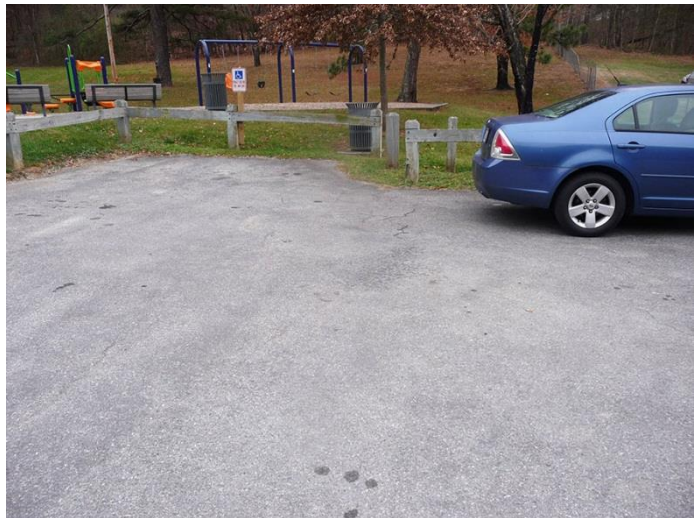


Priority Recommendations:

- Reconstruct walkways to be ADA compliant. Install new walkway and ADA curb ramp at basketball court.
- Make necessary repairs to basketball court pavement
- Repour the concrete pad under the trash receptacle, anchored properly into the ground
- Rebuild horseshoe pit frames



- Realign bumper stops and replace missing stops in parking lot
- Move the ADA parking signs to appropriate spaces



Valley Avenue Park

Location: 0 Hamilton Avenue, SW

Size: 3.2 acres

Park Type: Neighborhood

Features:

- Open space

Valley Avenue Park is a narrow strip of green space that sits between Valley Avenue and Hamilton Avenue in southwest Roanoke. This area functions more as a street right-of-way than a typical park. The west end of the park is growing up with mid-succession plants and becoming a more natural area. The entire park slopes steeply upward from Valley Avenue up to Hamilton Avenue.

ADA issues:

- No park features requiring ADA access

Key deficiencies needing attention:

- Some bare spots in the grass
- No programmed park use

Priority Recommendations:

- Return space to street right-of-way or naturalize and convert the space to a natural reserve.



Villa Heights Park

Location: 2750 Hoover Street, NW

Size: 4.1 acres

Park Type: Neighborhood

Features:

- Open space

Villa Heights Park is centrally located within a suburban residential area in northwest Roanoke near the Melrose Avenue and Lafayette Boulevard intersection. The baseball field is abandoned and grown over and there is substantial unused mowed lawn space.

ADA issues:

- None

Key deficiencies needing attention:

- Baseball field is abandoned. Grass has grown over the infield and the fence is badly damaged and falling down.

Priority Recommendations

- Remove baseball fence
- Install safety fence and warning signs between park and adjacent unsafe property.
- Install perimeter access control to prevent unauthorized access from Prillaman Avenue.
- Develop a master plan for this park.



West End Park

Location: 916 Campbell Avenue, SW

Size: 1.4 acres

Park Type: Neighborhood

Features:

- Playground

West End Park is in southwest Roanoke at Campbell Avenue and 10th Street, just north of the Roanoke River and Wasena Park. It is located within a residential area and contains a small playground and a small mowed field that functions as neighborhood open space. The park overall is very old and run-down looking and would benefit from proper maintenance.

ADA issues:

- The walkways within the park are too rough to be ADA accessible
- There is a large step down from the playground edge into the playground
- The mulch surface in the playground is in very poor condition with vegetation growing through and there are no accessible pieces of play equipment.

Key deficiencies needing attention:

- Walkways are old, rough and uneven
- Playground equipment is old and rusting. There is no mulch in the play area. The surface under the swings is old and worn through and has graffiti
- Area around the picnic tables is bare dirt and the tables are sitting on uneven ground

Priority Recommendations:

- Rebuild walkways to be smooth and even
- Replace play equipment and improve playground surfacing with rubber tiles or mulch
- Install individual picnic pads for single tables, a grill, and trash receptacle and remove single tables that are a “stand alone”
- Establish a maintenance management plan for the park so that maintenance functions and frequencies are achieved



1.5 COMMUNITY PARKS

Countryside Park

Location: 2365 Ranch Road, NW

Size: 22 acres

Park Type: Community

Features:

- Picnic shelter
- Comfort station
- Musical play
- Playground
- Outdoor fitness course
- Multi-use open space
- Portion of Lick Run Greenway



Countryside Park is one of Roanoke's newest parks and its most heavily used community park. It is in the northern part of the city off Ranch Road on what used to be a golf course and is surrounded by residential neighborhoods. The play area is entirely ADA accessible and includes inclusive play elements for all ability levels, as well as high quality musical play instruments. A new comfort station allows for increased length of stay.

ADA issues:

- This park is ADA accessible

Key deficiencies needing attention:

- None

Priority Recommendations:

- None

Countryside Park Trails

Countryside Park contains approximately two miles of paved trails that range in width from 4 feet to 10 feet and are ADA accessible. They receive moderate use spring through fall and light winter use and are in good condition other than a couple spots that need attention. There is a stretch of sidewalk behind the soccer fields that floods during rain events, washing mud onto the trail. The Countryside Park trails provide important connectors for the community to the Lick Run Greenway and could be improved by adding signage for the neighborhood connections off the main loop, kiosks, and more benches and trash receptacles.



Belmont Park

Location: 923 Montrose Avenue, SE

Size: 19.5 acres

Park Type: Community

Features:

- Picnic shelter
- Playground
- Baseball field (also used for soccer and football)
- Basketball court
- 2 tennis courts
- Paved multi-use path

Belmont Park is a beautiful park centrally located in an old neighborhood in southeast Roanoke at Montrose Ave and Morningside Street next to the Belmont Park Library and John P. Fishwick Middle School. The City recently constructed a paved multi-use path through the park.

ADA issues:

- Lack of ADA compliant paths to amenities
- The playground is not ADA compliant - the walkway does not extend to the playground and there are no accessible pieces of play equipment.

Key deficiencies needing attention:

- Erosion occurring on the banks by the baseball field and on the hill above the baseball field and bare dirt around playground and picnic shelter
- Parking is insufficient for the peak use at park. The west parking lot gets filled by users of the school and library across the street
- Old concession building and batting cage no longer in use. Batting cage is deteriorated
- Tennis courts have large cracks in pavement and are unplayable
- Retaining wall at baseball field has many broken blocks and concrete steps are old and outdated



Priority Recommendations:

- Address drainage issues causing erosion and reseed banks, hill, and area around playground.
- Post signs that parking lot is for park use only.
- Remove concession building and batting cage
- Rehabilitate or remove tennis courts
- Repair retaining wall and rebuild steps
- Construct an ADA compliant walkway connecting the playground to the paved path by the picnic shelter
- Improve lighting around interior park loop trail



Belmont Park Trails

The Belmont Park Trail consists of a 0.4-mile, 6-foot wide asphalt path that runs through Jackson Park. The trail is fully ADA accessible, receives moderate use spring through fall and light winter use, and is in good condition. There is no signage that identifies the name of the trail or its uses.



Booker T. Washington Park

Location: 1610 Burrell Street, NW

Size: 44.6 acres

Park Type: Community

Features:

- 2 picnic shelters
- 2 playgrounds
- Swimming pool
- 4 basketball courts
- 6 tennis courts
- Baseball field
- Multi-use field

Washington Park is a large community park located in northwest Roanoke on the north side of Orange Avenue, west of Interstate 581. A portion of the site was previously a landfill. There is a large swimming pool that needs major repairs but is still functional with annual maintenance. The upper playground is outdated. Along the greenway, there is outdoor exercise equipment which is in good condition and gets regular use.

ADA issues:

- There are ADA parking spaces at the lower parking lot, but the gravel path leading to the restroom and picnic shelter is not stable and even. There are no walkways to the playgrounds, lower baseball field, or basketball and tennis courts.
- The playgrounds are not ADA compliant because there is no accessible route or accessible play equipment.

Key deficiencies needing attention:

- Upper playground equipment is old and in poor condition
- Tennis and basketball courts are old, in poor condition, and don't get used
- Old building at south end of park is abandoned and in unsafe condition

Priority Recommendations:

- Replace playground equipment
- Consider repurposing tennis and basketball courts
- Dismantle abandoned building or make it safe and presentable for interpretive use
- Pave the walkway from the lower parking lot to the restroom and picnic shelter and extend this paved path to the playground. Add an ADA ramp at the playground.



Booker T. Washington Pool

Location: Booker T. Washington Park, 1610 Burrell Street NW, Roanoke, VA

Facility Type: Outdoor Aquatic Facility

Features:

- Olympic-size swimming pool
- Wading pool
- Diving well and water slides
- Pool building with restrooms, showers, locker rooms, and kitchen
- Concession stand and picnic shelter area
- Deck chairs and chaise lounges



The Washington Pool facility is located along the east side of Washington Park on Burrell Street and accessed from Quarry Road. The facility receives heavy use throughout the summer and offers several recreation opportunities but does require some extensive maintenance and repair.

ADA issues:

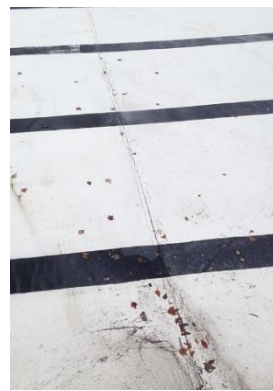
- Entire facility is ADA accessible

Key deficiencies needing attention:

- Wading pool leaks
- Mechanical system has significant problems
- Facility is old and has numerous cosmetic issues, large cracks in pavement, graffiti, etc.

Priority Recommendations:

- Fix leak in wading pool or replace with a spray park
- Make necessary repairs to mechanical system
- Perform necessary updates, repairs and maintenance to improve the facility's appearance



Eastgate Park

Location: 13th Street, NE

Size: 46 acres

Park Type: Community

Features:

- Playground
- Open space
- River access (no boating)



Eastgate Park is a large former landfill, which is now a natural area park in northeast Roanoke between 13th Street, Mason Mill Road, and North Avenue. Tinker Creek meanders through the north portion of the park and the parking areas on the north and west sides provide pedestrian access to the creek. The east park entrance has a picnic shelter, restroom, and small playground.



ADA issues:

- Course gravel in parking lot is not ADA accessible
- Basketball court and picnic shelter are not ADA accessible due to rough or uneven surfaces
- Playground is not ADA compliant - there is no accessible route or accessible pieces of equipment.



Key deficiencies needing attention:

- Parking lots are in poor condition with large potholes and uneven areas
- Broken bricks in the picnic shelter column and cracks in the concrete floor
- Bare dirt around the playground, picnic shelter, and parking area at the east entrance
- There is a large expanse of unused mowed lawn. Fields are rough and uneven and rocks and concrete blocks are protruding in places
- River access is steep and paths are narrow



Priority Recommendations:

- Pave parking area and provide ADA parking spaces
- Repair broken bricks in picnic shelter column and patch cracks in concrete floor



- Establish turf around playground, picnic shelter and parking
- Rehabilitate and reprogram large open areas
- Add picnic facilities
- Add hiking/biking trails with trailheads at the parking lots
- Construct safe and appropriate pathways leading down to the river



Eureka Park

Location: 1529 Carrol Avenue, NW

Size: 15.1 acres

Park Type: Community Park

Features:

- Picnic shelter
- Recreation Center
- Playground
- Basketball
- 4 tennis courts
- Baseball practice field
- Multi-use field



Eureka Park is in northwest Roanoke at Staunton Avenue and 16th Street. There is a Recreation center within the park that gets regular use. The playground, basketball court, and picnic shelter get considerable use; one shelter is often not enough to meet demand. The tennis courts and softball field are not used. There is a grove of large trees by the playground and shelter, but the ground beneath is bare dirt. This would make a great picnic area if it were reseeded and had tables installed. This park could benefit from creating a park master plan.

ADA issues:

- Basketball court does not have a walkway leading to it
- Paved walkways have rough spots that compromise access
- The playground edge drops too much to be ADA compliant, the mulch surface is in poor condition, and there are no accessible pieces of play equipment.

Key deficiencies needing attention:

- Basketball court pavement has cracks and rough areas
- Area under shade trees is bare, with compacted dirt
- Softball field is not used
- Tennis court pavement has cracks and needs to be resurfaced
- Some areas on walkways have cracks and broken/rough spots
- Antiquated sports lighting is non-performing and inefficient

Priority Recommendations:

- Rehabilitate basketball court
- Improve ground cover under shade trees and consider installing picnic tables
- Repurpose the softball field area
- Repurpose or remove tennis court
- Make necessary repairs to asphalt walkways and connect all amenities with ADA pathways
- Install ADA ramp into playground area
- Upgrade all sports lighting
- Develop park master plan



Eureka Park Recreation Center

Location: Eureka Park, 1529 Carroll Avenue, NW

Facility Type: Recreation Center

Features:

- Gymnasium
- Classrooms
- Office
- Kitchen



The Recreation Center at Eureka Park receives heavy use throughout the entire year, mostly for after school programs during the week and athletics and event rental on weekends. It is an old facility that is in fair condition overall but could use some updates and improvements. Additionally, there is not enough activity or storage space to meet demand needs. This is the only gymnasium within the Roanoke Parks and Recreation system.



ADA issues:

- Facility is ADA accessible

Key deficiencies needing attention:

- Exterior lighting around the building and parking lot is inadequate and does not meet code
- There are “dead” spots within the security camera range
- Not enough parking space for peak use
- Gymnasium floor should be replaced
- Skylights in the roof leak
- The boiler for heat is old and hard to control
- Ventilation system is outdated
- Not enough activity or storage space



Priority Recommendations:

- Install new exterior lights around building and parking
- Install additional security cameras or adjust positioning of existing cameras for better coverage
- Expand parking lot
- Replace gymnasium floor
- Repair skylights
- Replace the boiler system and old ventilation system with new HVAC
- Build extensions onto the building to expand activity and storage space. A separate storage shed apart from the main building is also an option to increase storage capacity.



Fallon Park

Location: 1900 Dale Avenue, SE

Size: 64.2 acres

Park Type: Community

Features:

- Picnic shelter
- Playground
- Baseball and softball fields
- 2 basketball courts
- Swimming pool
- Mountain bike course

Fallon Park is a large community park in southeast Roanoke located along Dale Avenue next to the Fallon Park Elementary School. In addition to sports fields and courts, a playground and a large swimming pool, there is abundant open space that connects to the Tinker Creek Greenway and a cyclocross course which is located on top of an old landfill site. The park's amenities are in good condition overall except for the tennis courts.

ADA issues:

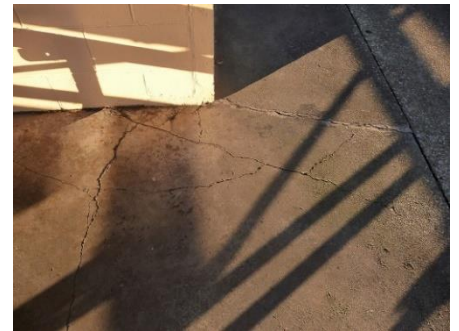
- The parking lots are paved but there are no designated ADA parking spaces
- The basketball court and softball field at the south end of the park do not have ADA pathways leading to them
- The playground is not ADA compliant. There is too much drop at the playground edge onto the mulch surface.

Key deficiencies needing attention:

- Tennis courts in poor condition with large cracks Fence around baseball field is damaged
- Large cracks in asphalt walkway and concrete floor around picnic shelter

Priority Recommendations:

- Repurpose the area where tennis courts and softball field are located
- Repair damaged fence around baseball field
- Repair cracks in walkways and floor at shelter
- Install an ADA ramp at the edge of the playground
- Designate ADA parking spaces with signage and markings
- Further develop the Tinker Creek Greenway



Fallon Park Trails

Cyclocross Course: This is a one-mile cycling course that offers varying rider experiences as its tread includes dirt, asphalt, gravel, sand, and grass, along with wooden steps and barriers. The paved portion of the course connects to the parking area and is ADA accessible; the non-paved portions of the trail are not ADA accessible. Overall the course is in good condition. The barriers could use minor repairs and the sand and gravel pit could use raking.



Fallon Park Pool

Location: Fallon Park, 1900 Dale Avenue, SE

Facility Type: Outdoor Aquatic Facility

Features:

- 1 1972 Olympic-size pool with swim lanes
- 1 wading pool
- Diving boards and water slides
- Pool building with locker rooms, restrooms, and concessions/kitchen
- Picnic tables, deck chairs and chaise lounges

The pool facility at Fallon Park offers many aquatic recreation opportunities with its Olympic-size pool with swim lanes, diving boards, slides, shallow pool for wading and young children, large pool building that contains locker rooms, restrooms and concessions, and ample patio space around the pools with picnic tables and chairs for lounging. Although the pool is outdated, it receives substantial use during the summer and is closed the rest of the year.

ADA issues:

- The facility is ADA accessible

Key deficiencies needing attention:

- Pool leaks
- The mechanical system for the facility is outdated and faulty
- Kitchen and bathrooms are outdated and only semi-functional
- Not enough storage
- Wading pool feed system is obsolete

Priority Recommendations:

- Fix leak in pool
- Make necessary repairs to the facilities mechanical system
- Perform necessary updates, repairs, and maintenance to the kitchen and bathrooms
- Add storage
- Add modern PH control system
- Consider replacing wading pool with a spray park



Fishburn Park

Location: 2304 Brambleton Avenue, SW

Size: 50.7 acres

Park Type: Community

Features:

- 2 picnic shelters
- Playground
- 2 tennis courts
- Disc golf
- Open space and trails

Fishburn Park is a large natural community park located in southwest Roanoke along Brambleton Avenue. It has open space which consists of mowed fields with a disc golf course and wooded area with a trail that wraps around much of the park. The Murray Run Greenway winds through the park.

ADA issues:

- Most of the park is not ADA accessible. There is an accessible walkway leading to the restrooms and picnic shelter, but the gravel parking lot is not accessible (uneven and unstable surface).
- The Murray Run Greenway trail is not ADA compliant due to steep grades and uneven surface
- Playground is not ADA compliant. There is no accessible route to the playground, the mulch surface is in poor condition, and there are no accessible pieces of play equipment.

Key deficiencies needing attention:

- Large potholes in the park access road and rough spots in the parking area; stormwater erosion is a problem
- Eroded and rough areas in the gravel walkway
- Tennis courts in poor condition

Priority Recommendations:

- Patch the potholes in the access road and pave the parking lot
- Address problem areas where water is draining across gravel walkways and then regrade and gravel the walkways; establish raingardens where appropriate
- Remove and repurpose the tennis courts
- Pave the ADA parking spaces and extend pavement to the restroom walkway
- Construct paved ADA parking spaces and walkways to the picnic shelter, playground, and lower section of park
- Remove old wooden light poles



Fishburn Park Trails

Hillside Trail: Hillside Trail is a 0.3-mile natural surface trail within Fishburn Park that connects the Murray Run Greenway to the Stream Trail in Fishburn Park. It received heavy use spring through fall and moderate use in winter and is not ADA accessible. The trail is in fair condition, mostly needing some water diverters to reduce trail drainage and erosion. The trail signage is outdated and should be replaced with usage and regulation signage that meets current



City standards, including adding a rules/regulation sign at the McNeil Drive trailhead. Also, the signpost at the Stream Trail intersection is missing its trail sign. There are numerous social trails along Hillside Trail which receive a bit of use, and these should be evaluated and either closed or easements should be acquired, and the trails improved and integrated into the City trails network.

Stream Trail: This 0.7-mile natural surface trail follows the Murray Run creek for about half its length and receives heavy use spring through fall and moderate winter use. It is not ADA accessible and is in poor condition with several issues that need to be addressed. The portions of trail that are along the creek are too close to the creek and there are several places where the trail tread has fallen into the creek and the bank is deteriorated and eroded. Braiding occurs as users try to avoid these areas. The trail should be rerouted to higher ground away from the creek. Near the old spring there is a perennial mud spot that should be armored or have a culvert installed, and the culvert near the forest edge needs more dirt on the trail above it. There is a social trail by the stone shelter and numerous social trails that connect the Stream Trail to nearby neighborhoods. Options should be considered to reroute and/or formalize these. Additionally, the signpost at the Murray Run Greenway intersection is missing its sign and there should be a sign for the Murray Run Greenway posted at mile marker .05 on the Stream Trail.



Highland Park

Location: 502 Washington Avenue, SW

Size: 32.8 acres

Park Type: Community

Features:

- Playground
- 2 softball fields
- Multi-use field
- Disc golf course
- Dog park
- Basketball court
- 3 tennis courts
- Performance stage
- Open space

Highland Park is a large community park located in the Old Southwest neighborhood at Washington Avenue SW and 5th Street SW, next to Highland Park Elementary School. The park is divided into an upper section and a lower section by the steep topography. There is abundant open lawn space with many large trees and old brick walkways leading throughout the park to the various amenities, which are spread out across the park. A quiet one-way road cuts through the park and provides easy access to three separate parking areas.

ADA issues:

- The majority of the park is not ADA accessible. The brick walkways are not ADA compliant due to grade and uneven surface
- There are no ADA parking spaces or walkways to service the dog park
- Playground is not ADA compliant because there is no accessible route or play equipment.

Key deficiencies needing attention:

- Walkways are in poor condition. Numerous areas are damaged, with bricks broken or missing. Walkways are rough and uneven.
- Tennis courts are in poor condition and not being used. Pavement is cracked and heaving from tree roots underneath, fence is damaged, and nets are torn.
- Basketball court has cracks in the pavement with grass growing through
- Outdoor stage is very old, in poor condition with broken boards



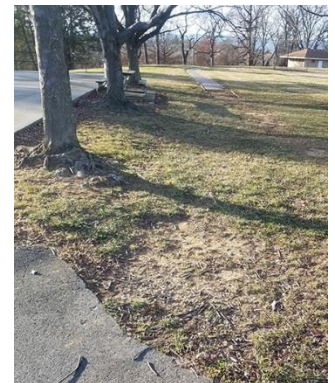
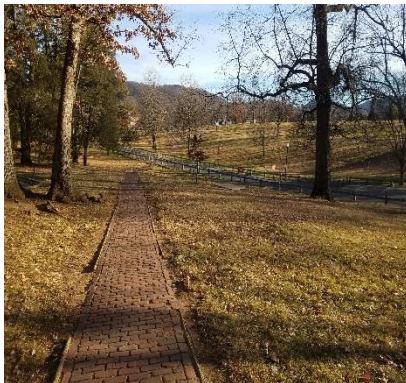
Priority Recommendations:

- At a minimum repair all damaged and missing bricks on walkways and rebuild the rough uneven areas. Walkways will likely need to be entirely rebuilt to become ADA compliant.
- Pave an ADA parking space by the dog park and install a concrete walkway connecting to the entrance
- Remove tennis courts and repurpose the space
- Patch cracks in basketball court asphalt
- Replace broken boards on outdoor stage and paint or stain the wood
- Picnic facilities should be fully ADA-compliant with access from the nearest ADA parking space



Highland Park Trails

The trails through Highland Park consist of brick pathways about 3 feet wide that cross through the park and connect to the streets around the park and to the amenities within the park. While the bricks are “historic Roanoke bricks” the paths are in poor condition due to many broken and missing bricks. The paths are too rough and steep to be ADA accessible and are not suitable for bicycle use. There is a short stretch of asphalt pathway near sixth street where the asphalt is badly deteriorating, and a section of path is missing. The asphalt and brick paths in Highland Park need to be substantially repaired and possibly new pathways installed to provide ADA accessible connections throughout the park. There is no wayfinding or trail use signage.



Huff Lane Park

Location: 4412 Huff Lane, NW

Size: 11.5 acres

Park Type: Community

Features:

- Playground
- Baseball and softball fields
- Basketball court
- Tennis court
- Roller hockey court
- Picnic shelter
- Restrooms



Huff Lane Park is located along the edge of a residential community in northwest Roanoke. The park is in good overall condition and is heavily used. There is on-street parking along Huff Lane, a quiet low-traffic street with landscape islands clearly defining the parking areas.

ADA issues:

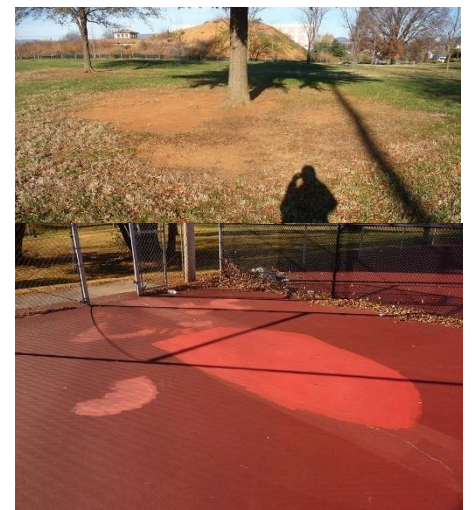
- There is no walkway to the swings
- There is too much drop at the edge of the playground to be ADA compliant and there are no accessible pieces of play equipment.

Key deficiencies needing attention:

- Hard courts have cracks in pavement and the tape from previous patching is deteriorating
- Sidewalk along Huff Lane in front of the park has a 2-inch high step from settling that presents a trip hazard
- There are unused power poles in the park that are unsightly and could be removed

Priority Recommendations:

- Repair cracks and taped areas on all hard courts
- Repair uneven sidewalk along the street in front of the park
- Install ADA access ramp into playground
- Construct a compliant walkway to the swings and add an ADA accessible swing
- Remove old power poles and utility boxes



Lakewood Park

Location: 1401 Brandon Avenue, SW

Size: 18 acres

Park Type: Community

Features:

- Playground
- Basketball court
- Grass volleyball

Lakewood Park is located in southwest Roanoke at Brandon and Brambleton Avenues just east of Patrick Henry High School. It is surrounded by residential neighborhoods and has a small pond within the park, fed by Murray Run Creek.

ADA issues:

- This park is not ADA accessible
- Playground is not ADA compliant. There is no walkway to the playground and no accessible pieces of play equipment.

Key deficiencies needing attention:

- Large cracks in basketball court pavement and rusted poles
- Timber edging around playground is rotting
- Benches and picnic tables are old and in poor condition
- Volleyball net is torn in several places
- Field is not graded for safe recreational sports use
- Drainage channel eroded across the path around the pond
- Pond is not sustainable

Priority Recommendations:

- Rehabilitate basketball court to City standards
- Replace timber edging around playground
- Replace benches and picnic tables
- If volleyball receives use, replace net and consider building a sand court
- Establish ADA paths to connect all amenities
- Develop ADA compliant picnic pads and shelter



Lakewood Park Trails

The trail at Lakewood Park consists of a short section of old dirt road that leads from Lakewood Drive into the back of Lakewood Park and connects to a dirt trail that wraps around part of the lake inside the park. The entire trail is 0.1 miles long and receives heavy use spring through fall, moderate use in the winter, and is not ADA accessible.

The trail is in poor condition, with erosion down the road section, and the small culvert pipe is directing water onto the trail causing erosion on the trail. The culvert should be extended and buried under the trail. The trail does not connect to the bridge over the creek which is close by and connects to the front of the park, so this should be addressed as well. It would make sense to construct a new path around the perimeter of the park as many people use the field.



Morningside Park

Location: 1034 Morgan Avenue, SE

Size: 25.2 acres

Park Type: Community

Features:

- Playground
- Tennis court
- Basketball court
- Softball field
- Multi-use field
- Open space

Morningside Park is a large community park in southeast Roanoke located at Morgan Avenue and 9th Street. Most of the park consists of rolling open lawn space with scattered trees. There is a significant amount of lawn that is being mowed and doesn't receive any specific

programmed use. The west side of the park has a playground, basketball court which gets some use, and tennis and softball which are in unusable condition. The playground is located far away from the ball courts and parking and there is no walkway leading to it.

ADA issues:

- This park is not ADA accessible. Internal park amenities lack accessible pathways.
- Playground is not ADA compliant. There is no walkway leading to the playground and no accessible play equipment.

Key deficiencies needing attention:

- Tennis court is in poor condition
- Softball field not maintained and unused
- Basketball court has damaged pavement
- Playground is isolated from other amenities and parking, has no walkways to it, timber edging is rotted, and playground doesn't get much use
- Substantial areas of mowed grass with no trails or program

Priority Recommendations:

- Rehabilitate tennis courts and softball field
- Repair basketball court and install new goals
- Relocate playground closer to ball courts and parking. Replace timber edging
- Replace lawn with meadow or successional plantings to reduce park maintenance. Construct biking/hiking trails around/throughout open space with interpretive signage about ecological succession
- Establish curb-and-gutter along park edge and add on-street ADA parking



Norwich Park

Location: 2127 Buford Avenue, SW

Size: 9.8 acres

Park Type: Community

Features:

- Playground
- Baseball field
- Basketball field
- Multi-use field
- Recreation Center

Norwich Park is located in southwest Roanoke at Roanoke Ave. SW and Rolfe Street, just south of the Roanoke River and just west of Ghent Hill and Vic Thomas Parks. The park receives moderate use in the spring, summer and fall, and light use during winter.

ADA issues:

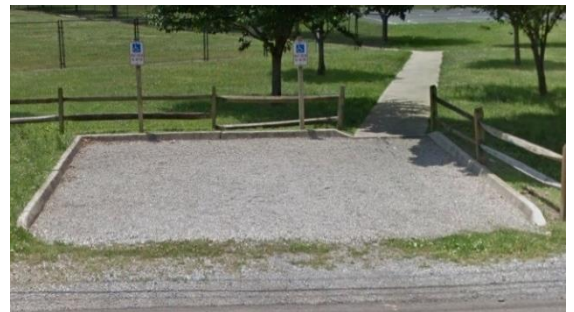
- The basketball court does not have a walkway leading to it
- There are spots where the walkway has a step, which poses a problem for wheelchairs
- The ADA parking area on Roanoke Avenue is not firm and stable
- There is too much drop at the edge of the playground to be ADA compliant and there are no accessible pieces of play equipment.

Key deficiencies needing attention:

- The on-street parking is not sufficient at peak times and is in poor condition
- There are cracks and uneven places in the walkways
- Baseball field in poor condition. There is poor drainage in the infield and bare spots in the outfield.

Priority Recommendations:

- Extend the gravel pull-off parking areas along Roanoke Avenue, or make them deeper to allow pull-in parking. Re-gravel the parking areas to fill in holes and rough areas.
- Repair cracks and uneven places in walkways
- Stabilize the ADA parking area
- Address drainage issues in baseball field and reseed grass



Norwich Park Trails

The neighborhood greenway trail connection is a 0.1-mile, 6-foot wide paved path that provides an important connection from the Raleigh Court neighborhood to the Norwich neighborhood and Roanoke River Greenway, although it receives very little use. As a paved urban path, it has recently been resurfaced and drainage issues corrected. Correct wayfinding signage should be placed at both ends identifying the trail as “to Roanoke River Greenway” and then heading uphill as “to the Raleigh Court Neighborhood/Mountain View Terrace.



Norwich Park Recreation Center

Location: Norwich Park, 2127 Buford Avenue, SW

Facility Type: Recreation Center

Features:

- Gymnasium
- Kitchen
- Storage
- Classrooms



The recreation center at Norwich Park consists of two separate buildings. One building was built in the 1960's as a small recreation space and is currently used for storage, office space, and minimal programming; the other building is a small gymnasium that contains exercise equipment.

ADA Issues:

- The curb ramp at the ADA parking space on Rolfe Street is in poor condition with rough/broken concrete

Key deficiencies needing attention:

- Lighting is inadequate in some areas
- There is not adequate storage space at the gym for current use



Priority Recommendations:

- Rehabilitate the old recreation building to a more modern neighborhood recreation center
- Remove old military hut (gymnasium)

Shrine Hill Park

Location: 2102 Grandin Road, SW

Size: 21.2 acres

Park Type: Community

Features:

- 3 tennis courts
- Multi-use field
- Trailhead for Murray Run Greenway

Shrine Hill Park is located on Grandin Road next to Patrick Henry High School in southwest Roanoke. It appears that most park visitors come here to access the greenway trail. The primary park amenities are tennis courts, a multi-use field, and a trail head.

ADA issues:

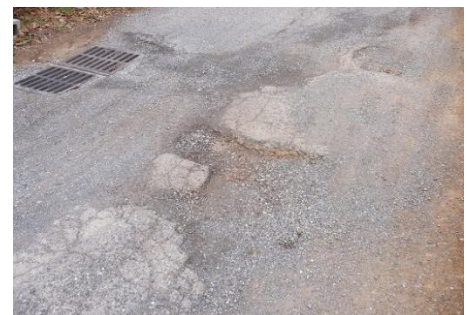
- Park is not ADA accessible. The coarse gravel parking lot is not a compact, smooth surface.

Key deficiencies needing attention:

- Tennis courts in poor condition with large cracks throughout the pavement and torn nets
- Potholes and rough spots in access road and parking lot and some bumper stops are broken
- Park appears to be underutilized

Priority Recommendations:

- If tennis courts don't receive use, they should be removed and repurposed.
- Improve access road and parking surface to ADA standards.
- Establish ADA routes within the park, connecting the amenities.
- Relocate the park sign to the park entrance



Smith Park

Location: 1618 Wiley Drive, SW

Size: 8.9 acres

Park Type: Community

Features:

- Picnic shelter
- Playground
- Open space with trails



Smith Park is located along the Roanoke River, just north of where Route 220 crosses the river. Wiley Drive and the Roanoke River Greenway bisect the park. Smith Park is an attractive, quiet, open space area that is used regularly by walkers, joggers and bicyclists. It is one of the most used parks within the system due to its proximity to the Roanoke River, the Roanoke River Greenway, and a favorite trout fly-fishing location

ADA issues:

- There are no ADA issues. The entire park and playground are accessible

Key deficiencies needing attention:

- The concrete loop path at the Robert Smith memorial has heaved concrete sections
- There are large bare dirt areas around the picnic shelter and playground
- Some large potholes in the parking areas

Priority Recommendations:

- Install bottle-filler with the drinking fountain
- Repair concrete path around the memorial
- Reseed bare lawn areas
- Repair holes in parking areas
- Install ADA route to new concrete pads for individual picnic tables



Strauss Park

Location: 644 Westside Blvd, NW

Size: 15.2 acres

Park Type: Community

Features:

- Picnic shelter/restrooms
- Playground
- Softball field
- Multi-use field
- Basketball court
- 2 tennis courts



Strauss Park is located in northwest Roanoke between Westside Blvd and Peters Creek Road. Peters Creek runs through the west side of the park. Many of the amenities need repair or replacement.



ADA issues:

- Although most of the park amenities have paved paths leading to them, there are some large cracks and bulges in the asphalt
- The paved path does not extend to the swings
- The playground edge drops too much to the mulch surface to be ADA compliant and there are no accessible pieces of play equipment.



Key deficiencies needing attention:

- Large cracks and uneven places in asphalt pathways
- The fence, concessions building, and drinking fountain at the softball field are in poor condition
- Tennis courts have large cracks and are not used
- Basketball court has large cracks in the pavement, the poles are rusted, and nets are torn
- Graffiti on the picnic shelter and cracks and markings in the concrete floor



Priority Recommendations:

- Repair damaged places and cracks in walkways and connect to all amenities
- Make necessary repairs to the softball fence, concessions building, and drinking fountain
- Repurpose or remove tennis courts
- Rehabilitate basketball courts
- Repaint picnic shelter, repair and clean concrete floor



Thrasher Park

Location: 930 Old Vinton Mill Road, NE

Size: 21.9 acres

Park Type: Community

Features:

- Picnic shelter
- Small community building
- Playground
- Softball field
- Basketball court
- Large dog park
- Open space
- Tennis courts



Thrasher Park is located in northeast Roanoke off Gus W Nicks Blvd and Old Vinton Mill Road. Much of this park is open lawn across rolling terrain with mature tree edge on two sides and a large riparian strip through the center.

A paved loop path with a boardwalk over the riparian area and interpretive signage would be an appropriate addition to this park space.

ADA issues:

- Park amenities lack accessible walkways
- There are uneven places in the paved walkway leading from the parking lot to the tennis courts and dog park
- Playground is not ADA compliant. There is no walkway leading to the playground, no accessible play equipment, and the mulch surface is in poor condition.

Key deficiencies needing attention:

- Tennis courts are in unusable condition and have been closed for several years
- Softball field appears unused
- Basketball court has cracks and broken spot in pavement and one of the nets is torn
- Playground is outdated (is scheduled to be replaced in 2019)
- Large expanse of unprogrammed mowed lawn
- Inadequate lighting at dog park

Priority Recommendations:

- Remove tennis courts and repurpose this space
- Repurpose or reseed softball field and replace backstop
- Rehabilitate basketball courts and replace hoop nets
- Include inclusive play equipment in playground replacement
- Install a light with a timer at the dog park
- Construct ADA walkways connecting all amenities

- Repair rough spots in paved walkway leading to dog park
- Construct a loop path through the park open space with interpretive signage for the riparian area. Consider constructing a boardwalk across the riparian area and possibly outdoor exercise equipment and benches along the new path. A disc golf course may also be appropriate. Portions of the lawn could be allowed to revert through successional growth, or be converted to native meadow, to increase natural habitat and reduce mowing.

Thrasher Park Recreation Center

Thrasher Park, 930 Old Vinton Mill Road, NE

Facility Type: Recreation Center

Features:

- Classrooms
- Kitchen
- Restrooms

The recreation center at Thrasher Park is a very small facility that is used about a dozen times a year for neighborhood meetings. It contains a meeting room with a kitchen and restrooms that are accessed from the outside. The inside of the building has been renovated and is in good condition, but the outside is unattractive and outdated.

ADA issues:

- The facility is ADA accessible

Key deficiencies needing attention:

- Outside of building does not convey an inviting character
- Facility is underutilized

Priority Recommendations:

- Repaint outside of building a more attractive color
- Remove metal over window and build window and door frames
- Market the facility to bring increased use
- Verify the feasibility of the facility as a viable public resource. If it is no longer a public benefit, consider replacing or repurposing it.



Vic Thomas Park

Location: 1234 Midvale Avenue, SW

Size: 15.9 acres

Park Type: Community

Features:

- Outdoor fitness course
- Art walk
- Open space/paved multi-use path
- Conservation area

Vic Thomas Park is located along the north side of the Roanoke River next to Ghent Hill and Wasena Parks. Accessed from Memorial Avenue SW, this is an attractive open space park made up of mowed lawn with trees and large masses of native grasses and shrubs. A wide, paved path loops around the park lined with outdoor exercise equipment and sculptures. A pedestrian bridge at the east end of the park spans the Roanoke River and leads visitors into Wasena Park.

ADA issues:

- The permeable pavers in the parking lot are not ADA accessible due to their uneven surface

Key deficiencies needing attention:

- Several pieces of exercise equipment have minor cosmetic damage
- Excessive commercial parking for adjacent use

Priority Recommendations:

- Repair cosmetic damage on exercise equipment
- Pave or install ADA compliant permeable pavers at the ADA parking spaces and access isles
- Consider adding ADA compliant picnic shelter and paths
- Restrict parking to park users
- Consider adding trail lighting



Wasena Park

Location: 1119 Wiley Drive, SW

Size: 31.8 acres

Park Type: Community

Features:

- 2 picnic shelters
- Playground
- 2 baseball fields
- Basketball court
- 4 tennis courts
- Skate/BMX park

Wasena Park is in southwest Roanoke along the south side of the Roanoke River. Main Street SW crosses over the east end of Wasena Park. At the west end of the park a pedestrian bridge crosses the river and enters Vic Thomas Park. The Roanoke River Greenway trail passes through Wasena Park.

ADA issues:

- The two picnic shelters and restroom are accessible. The swings, baseball fields, basketball and tennis courts, and skatepark do not have walkways leading to them. The playground has a walkway to it but no ADA ramp.
- There are no ADA accessible pieces of play equipment in the playground

Key deficiencies needing attention:

- Basketball court has cracks in pavement
- Tennis courts are closed because they are in very poor condition and are unused
- No railway warning signs
- Gravel parking lot by baseball field has large holes
- Softball field in poor condition

Priority Recommendations:

- Patch cracks in basketball asphalt or repave entire court
- If tennis courts are not being used, they should be removed and the space repurposed.
- Regrade rough areas and patch holes in gravel parking lot. Pave several ADA parking spaces and construct a paved walkway to the baseball fields to make them ADA accessible.
- Construct a concrete walk from the main play area to the swings and install an ADA swing
- Fix softball field
- Install ADA railroad crossing at large parking area



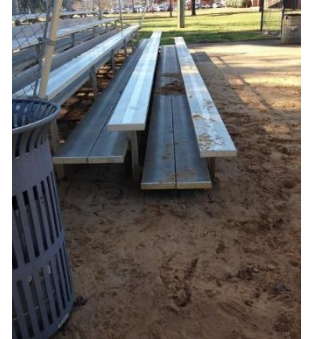
1.6 REGIONAL PARKS AND SPORTS FIELDS

Breckinridge Sports Fields

Location: 3901 Williamson Road, NW

Facility Type: Sports Fields

This park is directly adjacent to Breckenridge Middle School. The school and the City use the two baseball fields and two multi-use fields. The ball fields are in fair condition. There is sand drifting across the bleacher area and the chain link fence is separating along the bottom rail. There have been issues with homeless people staying in the restrooms, and none of the fields are ADA accessible. Paved paths could be added to connect the ADA parking spaces to the bleachers, restrooms, and perimeter of the fields. Parking is inadequate during games. Staff should consider a master plan for the site to include the branch library and open space in front of the middle school.



Elmwood Park

Location: 706 Jefferson Street, SE

Size: 6.9 acres

Park Type: Regional

Features:

- Amphitheater and stage
- Playground
- Art Walk

Elmwood Park is a centrally located urban park in downtown Roanoke between Jefferson Street, Elm Avenue, and Williamson Road. It features a large amphitheater and performance stage, a paved alley with art sculptures on display, a modern play structure with a series of large boulders meant for climbing on, and concrete walkways leading through rolling lawn and landscaped areas under the shade of mature trees. Overall, the park and its amenities are in very good condition, except the benches which are old and have some broken boards.



ADA issues:

- None

Key deficiencies needing attention:

- Park benches are very old, and some have broken boards

Priority Recommendations:

- Replace all park benches with new matching benches



Mill Mountain Park

Location: 2000 JB Fishburn Parkway, SE

Size: 611.3 acres

Park Type: Regional Park

Features:

- Discovery Center
- Zoo
- Mill Mountain Star
- Picnic shelter
- Playground
- Lookout decks
- Open space and trails



Mill Mountain Park is a large wooded natural area located on Mill Mountain in southern Roanoke and is protected by a conservation easement. The top of the mountain is accessed from Walnut Avenue, SE or JB Fishburn Parkway on the north side of Mill Mountain, and is where the Discovery Center, zoo, lookouts, picnic area, playground, several trailheads, and the iconic Mill Mountain Star are located. Mill Mountain offers spectacular views of the city and surrounding mountains and is a favorite destination for Roanoke residents. The natural surface trails on Mill Mountain are not intended to be ADA accessible.

ADA issues:

- The playground is not ADA compliant
- There are some rough/uneven areas along paved paths and at the upper parking lot that can make wheelchair access difficult



Key deficiencies needing attention:

- Not enough parking space for weekend use
- Some rough/damaged portions along the pathways
- Large areas of bare dirt and erosion around playground
- Picnic table on lookout deck and railing around decks have graffiti
- Restroom needs repairs and maintenance
- Wooden steps and railing old and worn



Priority Recommendations

- Expand parking lot, or consider alternate parking locations or designated overflow options
- Repair/repave damaged walkways
- Address erosion and reseed bare areas
- Remove graffiti from picnic table and railing at lookout deck
- Clean and repair restrooms
- Renovate steps at parking lot to current building code
- Construct an ADA accessible path to the playground and consider installing ADA compliant play equipment



Mill Mountain Park Trails

Big Sunny Trail: Big Sunny is a popular connector trail from the Mill Mountain Greenway to Riser and Robinhood Road. It is a natural surface trail that is 0.73 miles long, receives heavy use in the summer and fall, and moderate use in spring and light winter use. Overall, the trail is in good condition, but there are some erosion issues on the end near Robinhood. Reestablishing the ditch on the side of the trail and adding a grade reversal would help.



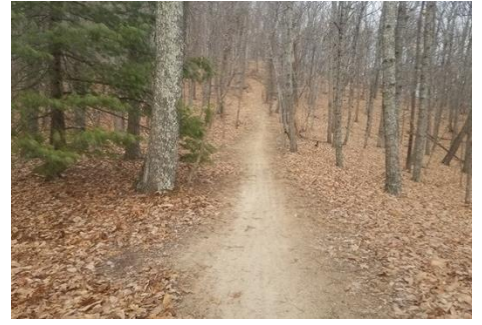
Crystal Spring Trail: This 0.61-mile gravel trail follows a sewer line cut and links Ivywood to Woodcliff on the lower end of Mill Mountain near the Hospital and is considered the easiest trail on Mill Mountain. It receives light use.



Monument Trail: This 1.55-mile natural surface trail is the most popular multi-use trail on Mill Mountain. It receives heavy use in the summer and moderate use the rest of the year. It is in good overall condition. There are spots near the top where there is tread creep, and re-benching would help reestablish the backslope and tread. There are two spots, one near the top and one at the very bottom, where invasive plants are needing to be trimmed back twice a year.



Ridgeline Trail: This 1.26-mile natural surface trail connects the Mill Mountain Greenway and Discovery Center to Understory and Riser trails as well as Yellow Mountain Road and the Chestnut Ridge Trail system. It receives heavy use summer and fall, and moderate spring use and light winter use. Overall, the trail is in good condition, however there are a few problem spots. The grass area near the Discovery Center has trail braiding and mud, there are some eroded areas near the switchback, and the section of trail on National Park Service property is braided as well. Staff should work with the park service to reroute this section of trail to make it more sustainable. There is also a row of invasives that need to be trimmed back near the top.



Riser Trail: Riser Trail is a 0.31-mile natural surface trail that serves as an important connection trail from Big Sunny to Ridgeline on the south side of the mountain. It receives heavy use spring and fall, moderate use in spring, and light use in winter. The trail is in good condition with no current issues that need to be addressed.



Sidewinder Trail: Sidewinder is one of the newer trails on Mill Mountain. Built in 2015, this natural surface trail provides a connection from the Woodthrush Trail to the JB Fishburn Parkway and provides a multi-use trail for connectivity from the Garden City side of the mountain to the downtown side of the mountain. It is 0.53 miles long, receives moderate use spring through fall, and light winter use. Overall, the trail tread is in great shape.



Star Trail: This 1.38-mile natural surface trail was the first official trail built in Mill Mountain Park and is also the most popular hiking trail in the Park. It receives heavy use spring through fall and light use in the winter. The trail is in poor condition, mostly because it receives so much use. There are several places where there is trail braiding, switchback cutting and erosion, and the steps between Fishburn Parkway and Monument have a step that is rotted. There is trash and bricks in the trail in the lower section from Woodthrush to Fishburn Parkway, and the crosswalk across Fishburn Parkway is faded and should be repainted.



Understory Trail: This is a 0.38-mile natural surface trail that serves as a connector between Mill Mountain Greenway and Ridgeline Trail, providing a loop at the top of Mill Mountain. It receives moderate use spring through fall, light use in winter. The trail is in good condition and currently does not have any issues.



Virginia Pine Trail: This 0.75-mile natural surface trail starts at Woodthrush Trail and leads to Hartsook Road. It receives moderate use spring through fall and light winter use. The trail overall is in good condition, including its one bridge; however, the signage is inconsistent in its difficulty rating, being green circle in some places and blue square in others. Near the intersection with Woodthrush there is a rotten technical trail feature that should be removed or replaced.



Woodthrush Trail: This is a 1.9-mile natural surface trail that connects Riverland Road and JB Fishburn Parkway, with several Mill Mountain trails branching off of it as well. The trail receives heavy use spring through fall and moderate winter use. The parking lot at Riverland Road is not large enough to accommodate use and needs improved stormwater control and grading. The sign there should be changed from “Star Trailhead” to” Riverland Road Parking” since the parking lot provides access to several trails, not just the Star Trail. It is confusing what the Star-Woodthrush connector is versus the Woodthrush Trail. Signage should be improved to clarify this. On the lower stretch of trail there is a large area of kudzu that should be removed and there is an area with protruding trash from the old landfill that should be covered with additional dirt. Near Sidewinder Trail there are social trails and a section that is very steep and braided and in need of repair. There is a leaner tree by one of the bridges that should be cut down, and the bridges should be cleaned.



Watchtower Trail: This 0.2-mile natural surface trail provides good connectivity for Mill Mountain visitors looking for a short hike linking the star overlook and Mill Mountain Greenway. It receives heavy use in the spring and fall, and moderate use in summer and winter. The trail is in good overall condition except for a couple spots that are eroding from water running either down or across the trail.



Mill Mountain Discovery Center

Location: Mill Mountain Park, 2000 JP Fishburn Parkway

Facility Type: Environmental Education Center

Features:

- Auditorium/exhibit room
- Educational exhibits
- Live animals
- Wildflower garden
- Office
- Kitchen

Mill Mountain Discovery Center is located at the top of Mill Mountain and is used for nature education programs. It contains interactive educational exhibits with live animals and a wildflower garden. It receives heavy use all year and is frequently reserved for special occasions such as birthday or dinner parties, weddings, and community events.

ADA issues:

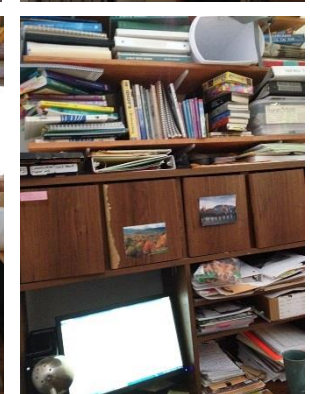
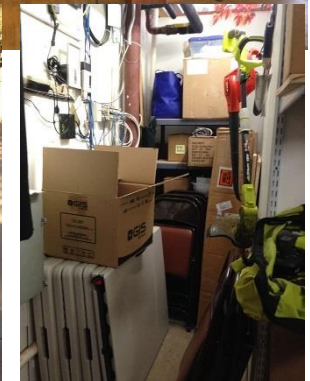
- The entire facility is ADA accessible

Key deficiencies needing attention:

- Not enough parking space
- HVAC system is old, in poor condition and should be evaluated for replacement
- No heat in the bathrooms
- Storage space is inadequate

Priority Recommendations:

- Expand parking lot or consider a designated overflow parking area (in accordance with current plans and restrictions)
- Consider replacing HVAC system
- Install electric heaters in bathrooms
- Build an extension onto the building or a separate storage shed next to the building to provide adequate and accessible storage or reduce programming and storage needs.



River's Edge Sports Complex

Location: 302 Wiley Drive, SW

Size: 55.9 acres

Park Type: Regional Park

Features:

- 2 picnic shelters
- Playground
- 1 baseball field
- 2 softball fields
- 8 multi-use fields
- 12 tennis courts
- 2 practice tennis ½ courts

River's Edge Sports Complex is a large regional park located in south Roanoke along Wiley Drive and the Roanoke River between Franklin Road and Jefferson Street. It is a sports destination for baseball, tennis, football, and soccer, and offers a playground and picnic areas. Two of the baseball fields have concession and restroom facilities; the multi-use fields are informal fields used for football and soccer. This park is located at the epicenter of the City's park, greenway, and blueway system.

ADA issues:

- All but one of the parking lots is rough gravel (not a stable surface)
- The paved parking lot does not have designated ADA parking spaces.
- The multi-use fields do not have walkways leading to them
- The south baseball fields have walkways leading to them, but the sidewalk along the street that is needed to access the walkways is rough and uneven
- Playground is not ADA compliant because there are no accessible pieces of play equipment

Key deficiencies needing attention:

- Access road to multi-use fields at north end of park in poor condition - large holes, cracks and grass growing through
- Gravel parking lot at north end has large potholes
- Shade screens on baseball dugouts are torn
- Standing water behind bleachers at baseball fields
- Tennis court windscreen is torn along bottom of fence
- Areas of standing water on tennis court
- Football goals are old and rusting; picnic tables, benches, and drinking fountains are old; and one of the bleachers is damaged



Priority Recommendations:

- Repair and pave parking and access road at Rivers Edge North
- Pave ADA parking spaces to provide ADA access to the multi-use fields and tennis courts. Paving ADA spaces in the middle parking lot by the river would provide ADA access to the pedestrian bridge via the multi-use path and would also connect the north and south portions of the park with an accessible route. Install ADA parking signs to designate ADA parking spaces
- Remove grass growing on walkway
- Replace shade screens on baseball dugouts
- Continue necessary turf rehabilitation on multi-use fields
- Address drainage issue at baseball bleachers at Rivers Edge South
- Replace torn windscreens on tennis fence
- Patch low spots in tennis courts to ensure drainage off the court at Rivers Edge South
- Replace old football goals, picnic tables, benches, and drinking fountains and repair damaged bleachers at Rivers Edge South
- Re-establish turf grass at all bare areas or add mulch beds around trees
- Extend the walkway to the bleachers at the north tennis courts
- Rebuild the sidewalk along Wiley Drive with ADA ramps to provide accessibility to the walkways to Rivers Edge South
- Construct an ADA compliant walkway from the existing walkway to the bleachers and all fields at Rivers Edge South
- Replace outdated irrigation system at Rivers Edge South
- Design and build-out Rivers Edge North
- Upgrade streetscapes on both Wiley Drive and Reserve Ave. to be ADA compliant



Westside Sports Fields

Location: 1441 Westside Blvd, NW

Facility Type: Sports Field

Westside Elementary School is a small school located on Hershberger Road in northwest Roanoke. There are two softball fields, with one of the outfields serving as a multi-use field. The field closest to the road is in good condition other than some brown grass around the edge of the infield and the concessions building is in fair to poor condition. The field at the back of the property has grass growing in the dirt infield area indicating that it is not being used for softball, but the outfield area is used as a multi-use field.

Key deficiencies needing attention:

- Concessions building looks dilapidated
- Walkway from parking area is damaged
- Softball field looks unmaintained

Priority recommendations:

- Renovate or rehabilitate concessions building
- Repair damaged walkway
- Repair and maintain softball field
- Consider transferring management to Roanoke City Public Schools



1.7 NATURAL AREAS

Carvins Cove Natural Reserve

Location: 9644 Reservoir Road

Size: 12,543 acres

Park Type: Natural/Preservation Area

Features:

- Open space
- Hiking/biking/equestrian trails
- Water reservoir with boat access
- Picnic shelter



Carvins Cove is one of the largest municipal parks in the United States and includes 11,363 acres that are protected by the largest conservation easement in Virginia's history. The park is located just north of Interstate 81 north of Roanoke and contains over 56 miles of trail and borders 14 miles of the Appalachian Trail. The reservoir contains over 600 acres of water. Carvins Cove offers abundant hiking, biking, horseback riding, fishing and boating opportunities. There are three areas that can be accessed by vehicle: Bennett Springs and Timberview, which offer hiking and biking, and the Boat Landing, which offers boat access to the reservoir as well as trail access and a picnic area.

Bennett Springs:

ADA issues:

- The Bennett Springs area is not intended to be ADA accessible due to the natural surface nature of trails.



Key deficiencies needing attention:

- Large potholes at the parking lot entrance
- There is a broken picnic table in the woods near the parking area.

Priority Recommendations:

- Patch the potholes at the vehicle entrance
- Remove damaged picnic table

Timberview

ADA issues:

- The Timberview area is not intended to be ADA compliant due to the natural surface nature of the trails

Key deficiencies needing attention:

- Vehicle bumper stops missing or out of place
- Wood fence and post is leaning



Priority Recommendations:

- Replace missing bumper stops and align all stops in correct locations
- Repair wood fence and post



Boat Landing

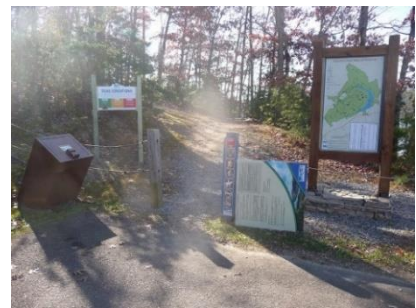
Almost all the facilities at the Boat Landing are managed and maintained by the Water Authority. The only features that Roanoke Parks and Recreation Department oversees are the trails, the information signs at the trailheads, and a new bike repair station by the upper trailhead. The City has recently installed new information signs at both trailheads. As a suggestion to the co-management of the Natural Reserve, the following is recommended to the WVWA:

ADA issues:

- The parking lot is ADA accessible, and there is an accessible path to the check-in building. The restroom next to the check-in station has steps and a rough walkway leading to it that are not compliant. The lower trailhead at the end of the parking area can be accessed, but the trail itself is not accessible. There is no accessible route up to the picnic area and upper trailhead. The restroom and picnic pavilion at the northern end of this area are not ADA compliant.

Key deficiencies needing attention:

- Lack of ADA access routes to picnic facilities, restrooms and fishing areas

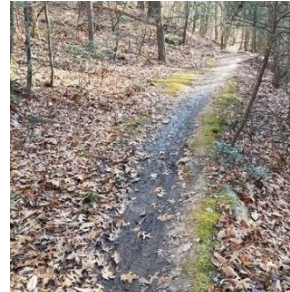


Carvins Cove Natural Preserve - Trails

Araminta Trail: The Araminta trail is a natural surface trail that connects to the Hemlock Tunnel trail and the Kerncliff trail just above the reservoir. Araminta, which receives little use, is 0.71 miles long, and is in fair condition needing some minor repairs. The directional sign on the trail has some damage and should be replaced.



Arrowhead Trail: This is a 1.53-mile natural surface trail at the northwest end of the reservoir that receives moderate use spring, summer, and fall and little use in winter. The trail is in poor condition with erosion from poor drainage that needs to be addressed. There are several places where the trail is on a fall line and could be re-routed to reduce trail erosion. Water diverters that were put in 6-8 years ago have filled in and are overgrown. These need to be re-established to reduce erosion and prevent mud and water pools. The trail signs need repair as well, and the intersection with Sawmill Branch needs a sign added.



Bennett Springs Loop: This is a 0.83-mile loop trail at the Bennett Springs parking area that receives heavy use spring, summer, and fall and light use in the winter. It is a natural surface trail that is in good condition other than some erosion and saturation in places.

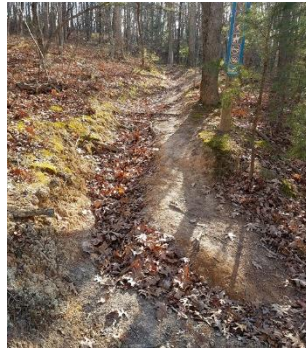


Brushy Mountain Trail: This trail is an old fire road that runs from the north end of Carvins Cove Road for 9.81 miles up and over Brushy Mountain. The trail is natural surface and receives moderate use spring through fall and light winter use. The side ditches and culverts should be reopened and the road re-graded to allow for better drainage. In many places the culverts are full of sediment, rock, deadfall and saplings, and the water is running down the trail causing erosion. There is substantial erosion along the sides of the trail as well,



particularly where there are steep banks. There are also some cosmetic issues such as barbed wire wrapped around trees and an old gate post alongside the trail.

Buck Trail: Buck Trail is a 1.5-mile natural surface trail that is accessed from the Hotel Trail heading south from the Bennett Springs parking area. The trail receives heavy use in the fall, moderate use in the spring and summer, and light use during winter. The trail is in fair condition overall, but there are areas of bad



erosion that need to be addressed and water diverters that need to be cleaned out and new ones built to improve drainage.

Enchanted Forest Trail: This 0.66-mile natural surface trail is located at the northwest end of the reservoir. It receives heavy use spring through fall and moderate use in winter. The trail is in good overall condition, other than some braiding at several intersections. The different trail intersections show two different trail difficulty markings while the kiosk just shows one. The trail signs should show the same as the kiosk for consistency. The trail is split into two separate segments,



which can be confusing, the technical mountain bike features should have signs, and the largest log stack should be rebuilt.

First Deck Trail: This is a 0.92-mile natural surface loop trail that begins and ends on Horsepen Trail between Trough and Gauntlet trails. It receives moderate use in summer and light use the rest of the year. The trail is in good condition other than some erosion in a couple spots and the trail sign needs repair.



Four Gorge Trail: This 2.13-mile natural surface trail is accessed from the Bennett Springs parking area and is one of the most popular trails at Carvins Cove. It is in fair condition, receiving heavy use spring through fall and moderate use in winter. There is one spot of bad erosion, and many of the water diverters have washed out and need to be repaired. There is a social trail leading to a treestand and a “no trespassing” sign that is on City property. The social trail should be closed, the treestand and sign removed, and the culverts should be cleaned out and re-established. The bridge appears to be in good condition.



Four Gorge Extension: This 0.69-mile natural surface trail continues from the north end of the Four Gorge Trail and leads up to Tuck-a-Way and Kerncliff trails. It receives heavy use spring through fall and moderate winter use. It is in good condition except for some of the grade reversals and water diverters have eroded and filled in, causing muddy spots.



A sign needs to be placed at the trail intersection with Kerncliff Trail letting users know they are entering Kerncliff.

The Gauntlet: This is a steep 2.05-mile natural surface trail that goes over Brushy Mountain and connects Brushy Mountain and Horse Pen trails. It receives heavy use in the summer and fall, moderate use in spring, and light use in winter. The trail is in somewhat poor condition from erosion and water diverters that are not functioning. There is trail braiding at one place because of exposed roots from trail erosion, and there are a couple social trails that should be closed. Repairing the water diverters and placing new tread on eroded areas would greatly improve this trail.



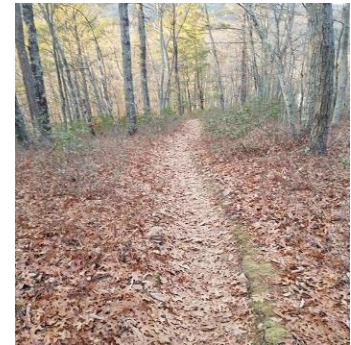
Hemlock Tunnel trail: This 1.87-mile natural surface trail is located at the north end of Brushy Mountain Trail and connects to Kerncliff Trail. It receives moderate use spring through fall and light winter use. The trail is in somewhat poor condition due to erosion and water diverters that need to be repaired and cleaned out. In some places the vegetation has grown into the trail corridor and needs to be trimmed back. There is a section of trail that is mostly in the creek, so alternate routes should be explored.



Hi Dee Hoe Trail: This is a 1.52-mile natural surface trail accessed from the Bennett Springs parking area. It receives moderate use spring through fall and light use in the winter, although the beginning of the trail gets heavy use because it provides access to the Four Gorge Trail. The trail is in fair condition, but there are some erosion and drainage issues. Several water diverters need to be repaired and other places along the trail need new ones built. Drainage from the parking lot is causing erosion at the beginning of the trail.



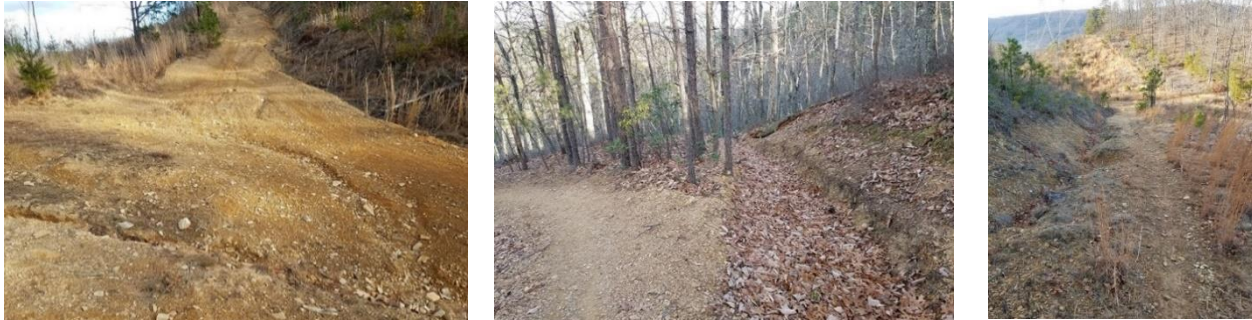
Old Hi Dee Hoe Trail: This short 0.13-mile natural surface trail receives heavy use in the fall and moderate use the rest of the year. It is in good condition, just needing a water diverter in one spot and trail signs at both ends of the trail.



Horsepen Trail: This 1.24-mile natural surface trail is an old fire road that is accessed from the Timberview parking area and leads to the south tip of the reservoir. The trail is in fair condition and its two bridges are in good condition. Culverts should be cleaned out to improve drainage and improved and increased signage would be beneficial as well.



Jacobs Drop Trail: This 0.52-mile natural surface trail is part of an old fire road that connects Brushy Mountain and Kerncliff trails. The trail receives light use and is in poor condition with significant drainage issues and erosion, requiring new water diverters. Existing diverters need to be repaired, drainage ditches should be cleaned out and re-established, and a new culvert added.



Happy Valley Trail: This is a 6.71- mile fire road that is dirt and gravel, located at the north terminus of Carvins Cove Road. It receives heavy use spring through fall and moderate winter use. The trail is in good overall condition, with a few areas of erosion and muddy spots, mostly near culverts. Most of the culverts are clogged with leaves or limbs and need to be reopened. There is an exposed culvert that needs tread placed above it, some metal posts with no signs, a damaged trail sign that needs replaced, and some of the intersections could use better signage.



Hotel Trail: The Hotel Trail is a 1.14-mile natural surface trail that heads south from the Bennett Springs parking area. It receives heavy use spring through fall and light use in winter. The trail is in fair condition but needs maintenance and repair in several places. There are a couple spots with trail braiding and erosion and there are water diverters that have filled in and other places that could use new ones. Some of the armoring along the creek crossing needs the tread repaired, and the old fall line climb on the third reroute section should be permanently closed and revegetated.



Kerncliff Trail: Kerncliff Trail is an old fire road that is 2.47 miles long and although it receives light use, it serves as an important connector for many of the mid-mountain trails. In many places it has become a single-track trail. The trail is in overall poor condition, with drainage issues that need to be addressed. One area needs a culvert installed to stop major drainage across the trail. Another place gets muddy and needs stone material added to the trail. Several culverts need to be cleaned out. There are seven trees down across the trail in various places, and several places need the vegetation cleared back away from the trail. Wayfinding signage could be improved along the trail as well, and some signs have been damaged and need to be replaced.



Lower Comet Trail: This is a 0.72-mile natural surface trail that runs north from the north end of Carvins Cove Road. It receives heavy use spring through fall and light winter use. The trail is in poor condition because of substantial erosion and braiding and needs tread repair and water diverters. A fallen tree alongside the trail has narrowed the trail and should be removed. There is a difference in trail difficulty between the lower and upper Comet Trails and a sign should be placed where Comet Trail intersects Happy Valley Trail and Tuckaway Trail to alert users to this.



Upper Comet Trail: This portion of the Comet Trail continues north from the Lower Comet Trail and is considerably more difficult than the Lower Comet. This natural surface trail receives moderate use spring through fall and light winter use. The trail is mostly in poor condition due to bad erosion and braiding. The worst section is on the area called “the hill of despair,” which is so steep that bikers must push their bikes up the hill and the trail has widened to 10-12 feet. There is adequate space to construct an alternate route. There are several places along the trail where water is running down the steep hills to the trail causing erosion, so benches and water diverters should be constructed to improve drainage. Finally, there is a section where the vegetation should be trimmed back from the trail, and the sign at Tuckaway Trail should be changed to indicate the increased difficulty of Upper Comet Trail.



Tuckaway Trail: This natural surface trail is 0.97 miles long and connects the Happy Valley and Kerncliff trails. It receives heavy use spring through fall and moderate use during winter. The trail is in fair condition but has substantial drainage and erosion issues and braiding that need to be addressed. One section of trail passes through a steep narrow creek gorge and should probably be rerouted or have water diverters added along the top to protect the gorge. There is a perennial mud spot that needs to be armored or rerouted, and the sign at the Comet Trail intersection is damaged and should be replaced with a sign that includes better wayfinding.



Lakeside Trail: This natural surface 3.7-mile trail was constructed in 2014 and offers amazing views of the reservoir and mountains. It receives moderate to heavy use. The trail is overall in good condition; however, there are numerous creek crossings, and these should be monitored for possible future erosion.



School House Trail: This 1.62-mile natural surface trail is a popular and easy hiking trail located at the northwest end of the reservoir. It receives heavy use spring through fall and moderate use in winter. The trail is in fair condition but has some drainage and erosion issues. Because it is flat and in a swampy area, it is prone to being muddy. Water diverters should be added in several places to reduce runoff on the trail, and there is significant erosion at the intersection of Happy Valley and Little Bell trails, so this area should be revegetated. The sign for the vista point needs to be replaced and wayfinding signs could be improved. There is a tree leaning across the trail that should be removed and the log stack area that needs to be restacked.



Little Bell Trail: This is a short 0.29-mile natural surface trail at the northwest end of the reservoir. It receives heavy use spring through fall and moderate winter use. The trail is in fair condition, but tends to be muddy because of its low, flat location. There is braiding at the Schoolhouse Trail intersection and better trail signage is needed there. Two muddy spots on the trail need armoring, and one needs the bricks removed from the trail because they get slick when wet. The old log stacks need to be either restacked or removed.



Songbird Trail: This 1.88-mile natural surface trail connects at both ends to the Happy Valley Trail and receives heavy use year-round. It is in fair condition with several areas of erosion, trail braiding, and muddy spots. The section of trail from Enchanted Forest to the Tunnel needs tread repair, dip repair, and water mitigation, and the sign at the south end of the trail needs to be reoriented to face the trail entrance.



Riley's Loop Trail: Riley's Loop is a 0.34-mile stretch along the old fire road at the northwest end of the reservoir that leads to a picnic area with magnificent views of the lake. The trail and picnic area are rarely used. The trail is in fair condition with no significant issues, but the path leading to the lake has vegetation growing on it. Consider resurfacing with stone dust. Signage should be added at the Happy Valley intersection. Consider removing the old regulations sign and replacing with a more welcoming informational/ regulations sign. Removing the old restrooms and pump house and placing some picnic tables and lounging chairs would help to make this a destination picnic area.



Rattlin' Run Trail: This 2.28-mile natural surface trail, which heads northwest from the Bennett Springs parking area, is the most difficult and technical trail at Carvins Cove because of its challenging rock features. While it receives only light use, it attracts mountain bikers from all over due to its technical challenge. The trail is in good condition with no erosion or drainage issues thanks to all the rocks and well-drained soils, but there is some braiding from bikers going around the technical features. Leaves on the rocky trail make it more hazardous and further encourage users to skirt around difficult areas, so blowing the leaves off in late fall should help reduce braiding. The sign at the Bennett Springs loop intersection needs to be changed from “not recommended for horses” to “no horses allowed.”



Sawmill Branch Trail: This 1.17-mile natural surface trail is the northern-most trail within Carvins Cove and is the only Cove trail that connects to the Appalachian Trail. It gets very little use and is in poor condition and in need of maintenance. The middle section of the trail is steep and has erosion from water

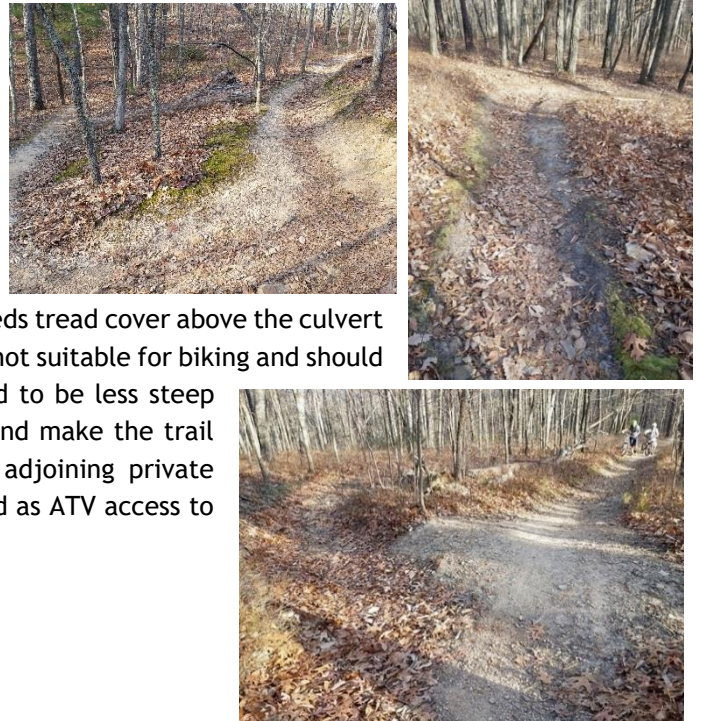


drainage. Water diverters should be installed to reduce this. There is significant deadfall and vegetation covering the trail, the trail blazes are two different colors and hard to follow, and there is no signage at the Arrowhead or AT intersections. The deadfall and vegetation need to be removed, the trail should be re-marked in both directions with consistent color blazes, and wayfinding signs need to be installed at the Arrowhead and AT intersections. New signage should be added at the Carvins Cove boundary to alert AT hikers that they are entering Carvins Cove and stating the regulations that apply.

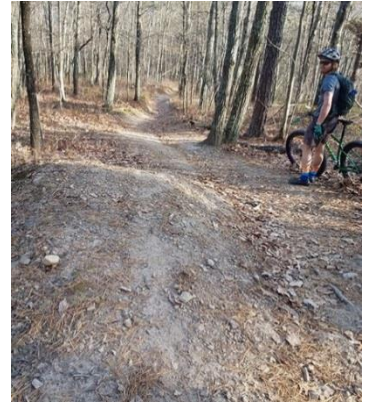
Tunnel Trail: The Tunnel Trail is a vehicle access road for the Western Virginia Water Authority that leads through Catawba Mountain to Catawba Creek. It is 0.43 miles long, 8-10-foot-wide, dirt and crushed stone, and is open to hikers, bikers and horses, though it receives little use. The road is in good overall condition with minor drainage issues. The trail ends at the tunnel, which is gated, and there is a large gravel field and old signs from when the tunnel was built. This area could be improved and made safer by removing the old signs, fencing off an area for viewing the tunnel, and installing interpretive signs informing trail users about the site.



The Trough Trail: This is a 1.08-mile natural surface trail that heads west from the Timberview parking area and terminates at the Brushy Mountain Trail. It receives moderate use during spring and summer, heavy use in the fall and light use in winter. The trail is in poor condition, with a bit of water runoff and erosion. There are several water diverters that need to be cleaned out and re-established to reduce trail erosion, and the trail at the Horsepen intersection needs tread cover above the culvert re-established. There are places on the trail that are not suitable for biking and should be improved. Portions of the trail could be rerouted to be less steep and have water diverters added to reduce erosion and make the trail more useable. An old trail section leading to the adjoining private property should be closed off because it is being used as ATV access to the Trough Trail.



Trough Trail - Expert Section: This 0.12-mile jump line trail on the main Trough Trail is meant to provide a more challenging technical bike route option along the Trough Trail. Many of the technical features on the trail are no longer rideable, and there is poor drainage and filled-in water diverters that need to be addressed. Options for reworking or rerouting the jump line to make it more useable and more easily maintained should be explored.



OG Trail: This was originally an old social trail near The Gauntlet Trail that has been converted to a gravity jump line for mountain bikes. It is 0.55 miles long and is a popular trail because of its unique technical features. The top and bottom portions of the trail are in good condition with well built and maintained features, but the middle portion has old hand-built features that should be rehabilitated. There are two drops along the trail that are very big and may need signage. There are also some minor drainage issues that should be addressed and an old social trail that should be closed off.



Royalty Trail: This 0.80-mile mountain bike trail was an old social trail that has been gradually getting developed as an official technical bike route. It receives moderate use and is in fair condition, mostly needing better water diversion to reduce erosion on the trail. There are three free-ride features that are either on short side trails or on the main trail with ride-arounds. These should have signs and lip marks to notify trail riders about them.



Old Blue Blaze Trail: This is a 1.7-mile natural surface trail that is mostly within the Carvins Cove property, but its northeastern intersection is on Appalachian Trail Conservancy (ATC) land near Lambert’s Meadow and its southwestern intersection is on private property. It receives very little use and is not currently shown on the Carvins Cove trail map. The trail is in poor condition and there is significant ATV use and social trails. The trail should be added to Carvins Cove trail map and be marked and maintained as an official hiking trail. Wayfinding and use restriction signs as well as increased hiker use would help to discourage ATV use. Staff should work with the Virginia Outdoors Foundation and DCR to get an exemption to reroute the trail back toward the rest of the Cove system near the tunnel through a Natural Heritage Area of the park.

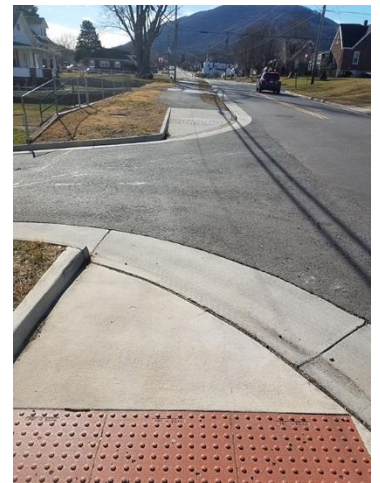


1.8 GREENWAYS

Garden City Greenway

The Garden City Greenway is a 3.43-mile paved trail located within the Garden City neighborhood that runs from the Garden City Rec Center to Roanoke River Greenway. It is somewhat accessible, but not to the standards as per ADA for Outdoor Developed Areas at residential driveway entrances. The trail was recently developed and in very good condition; however, it is greatly lacking in signage, the City's standard 10-foot-wide trail width, clear zones, and definition at commercial entrances. Gravel washes from driveways onto the trail in places and poses a potential hazard to trail users.

There are no mile markers along the trail, and no kiosk or trail information signage at either end of the trail. It is recommended that utility poles be removed from within the asphalt trail sections; paint the trail section across commercial entrances and find opportunity to locate park benches and drinking fountains as feasible.



Lick Run Greenway

The Lick Run Greenway is a 4.5-mile asphalt paved trail that provides neighborhood connections via Countryside, Brown-Robertson, and Booker T. Washington Parks and offers amazing views of downtown Roanoke and Mill Mountain as well as solace within an urban environment. It also features interpretive signage. The trail receives moderate usage spring through fall and light winter use, and is ADA accessible, although there is a rough edge transition at the ADA ramp at Lucy Addison. Most of the trail is in good condition except for several places with cracking and upheaving in the asphalt; however, there are several other issues along the greenway that should be addressed. Wayfinding signage is very limited and should be increased, there are no trailhead kiosks or maps, and there are five commercial entrances that cross the greenway which have no safety signage and limited crosswalk markings. Many of the interpretive signs have cracked and peeling panels and some have been vandalized, and there is graffiti along the trail in Brown Robertson Park. There are several missing bollards along the greenway and evidence of vehicles driving on the greenway.



Mill Mountain Greenway

The Mill Mountain Greenway is a 3.4-mile paved trail that begins at the Star on top of Mill Mountain Park and terminates at Wells Fargo Plaza in downtown Roanoke. Portions of it are shared with roads or sidewalks, and ADA accessibility varies along the trail. The greenway receives moderate use spring through fall and light winter use. It is in good condition but needs significant improvements and upgrades with its wayfinding signage, mile markers, and amenities such as benches and trash receptacles. The culverts and stone wall on Prospect Road could use repair.



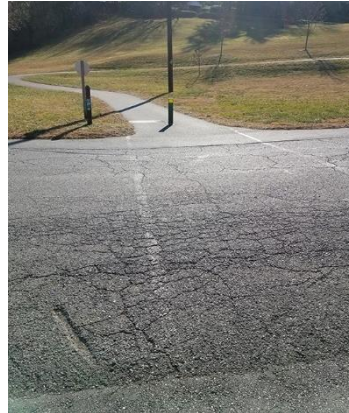
Murray Run Greenway

Murray Run Greenway is a 1.61-mile trail that starts in Shrine Hill Park on Grandin Ave SW and travels through City school property to Woodlawn Park, Fishburn Park, and terminates at McNeil Drive SW. Portions of the trail are natural surface dirt and other sections are crushed stone/cinder path and receives heavy use spring through fall and moderate winter use. The City's most natural greenway trail, Murray Run was created to follow the terrain via Fishburn, Woodlawn, and Shrine Hill Parks; therefore, ADA accessibility is not achievable due to the natural terrain. Several issues exist along this greenway that should be addressed. There are places where the trail is eroding, rutted and/or grass is growing through. The parking lot at Fishburn park is draining directly onto the trail causing erosion. This portion of trail is too steep for gravel as it keeps washing out, so it should be either paved or rerouted. One of the bridges has a large step up to it that should be eliminated and the sign on the other side of the bridge labels the social trail there rather than the greenway. There are several social trails along the greenway that should be managed. Some of the wayfinding signs along the greenway are damaged, old and faded, missing or in the wrong place, and many of the mile marker posts have cracked or missing placards.



Roanoke River Greenway

Bridge Street to Smith Park: This 3-mile stretch of the Roanoke River Greenway is one of the busiest sections of trail in Roanoke, receiving very heavy use year-round. It is asphalt paved and fully ADA accessible, and has abundant amenities such as benches, trash receptacles, fitness equipment, art sculptures, and wayfinding/regulation signage. The trail is in very good condition, but with some minor issues. The 22.5-mile marker post is rotted and post 22.7 is cracked, the crosswalk at the access road to Richardson needs to be repainted, the kiosk maps need to be updated to show the new Greenway expansions, and there is a bollard missing near the bridge between Vic Thomas and Wasena Parks and another bollard missing near the Green Goat. Additional wayfinding and trail-use signage would be helpful through Wasena and Smith Parks and along Memorial Bridge. While Parking is an issue, better wayfinding would provide information as to where larger parking opportunities are.



Blue Ridge Drive to Aerial Way: The section of Roanoke River Greenway from Blue Ridge Drive to Aerial Way is the newest stretch of Roanoke River Greenway. It is 1 mile long, asphalt paved and fully ADA accessible, although it receives little use. The tread surface is in great shape, but it has almost no amenities and no signage. A signage plan needs to be implemented along with mile markers, kiosks, benches, trash cans, and bike racks. There are also no public parking areas for this stretch of trail.



13th St. Trailhead at Bennington to Smith Park: This 6.3-mile stretch of the Roanoke River Greenway is mostly a 10-foot wide asphalt path. The paved portion of the trail is ADA accessible. The trail receives heavy use spring through fall and moderate use in winter and is in good condition except for a couple areas where there are cracks in the asphalt or missing asphalt edge from erosion. There are 13 missing mile markers and several missing bollards along this stretch of the greenway and two signposts with no signs. Certain areas along the trail could use additional signage as well. Near the hospital there is a section of fence that is falling down, and a section of wood fence is damaged near the intersection with Garden City Trail. Graffiti is present on signs and posts near the water treatment plant. While mapped, there is an off-road gap between the Bennington trailhead and the connection to the upper portion of the trail uphill from the Western Virginia Water Authority Treatment Facility. The on-road gap is very steep so it is recommended that the trail gap be developed and signed appropriately.



Tinker Creek Greenway

Tinker Creek Greenway Trail: This 1.1-mile portion of the Tinker Creek Greenway runs from the Roanoke River Greenway to Wise Avenue. It is a 10-foot wide asphalt path that is fully ADA accessible and receives moderate use spring through fall and light use during the winter. Overall, the trail is in good condition, except for some cracks in the asphalt between mile markers 0.8 and 0.9, and there is high water damage to the trail under the railroad underpass near Wise Avenue. There is considerable trash in this area on the ground and in the trees and bushes, likely deposited during high water events. There is only one kiosk and its map panels are peeling and the map is incorrect as to where Tinker Creek Greenway starts and ends. Kiosks are needed at the Wise Avenue and Dale Avenue trailheads, and signage placed at the Fallon and Kenwood trail connections. A bollard is missing at the Kenwood connector and the benches along the trail have rotting planks and need to be replaced. The second phase of the greenway trail is currently under design from the Wise Avenue trailhead north to Masons Mill Park.



1.9 SCHOOL FACILITIES

****The following facilities are school fields and/or gymnasiums. The Parks and Recreation Department does not manage school-owned facilities. Unless otherwise noted, all school facilities are ADA accessible.**

Addison Middle School gymnasium

Location: 1220 5th Street, NW

Facility Type: School - Gymnasium

Addison Middle School is at 5th Street and Orange Avenue in northwest Roanoke and is used heavily during the winter for basketball games and practice by the City. The gym is in good condition with no issues. The key issues are the small gravel parking lot and street parking is inadequate for peak use and the parking lot has poor lighting.

Booker T. Washington Administrative Building Gymnasium

Location: 40 Douglass Avenue, NW

Facility Type: Administrative Building - gymnasium

Features:

- Gymnasium
- Offices



Once the Booker T. Washington School, this facility is now used as an administrative building by the City's school system and the indoor gymnasium is used for basketball practice during the week and occasionally for games. The facility is located in northwest Roanoke on Burrell Street, just north of Orange Avenue and across the street from Booker T. Washington Park.

ADA issues:

- None of the facility is ADA accessible. All the walkways leading into the main building and the gymnasium building have steps and there is no ramp access.

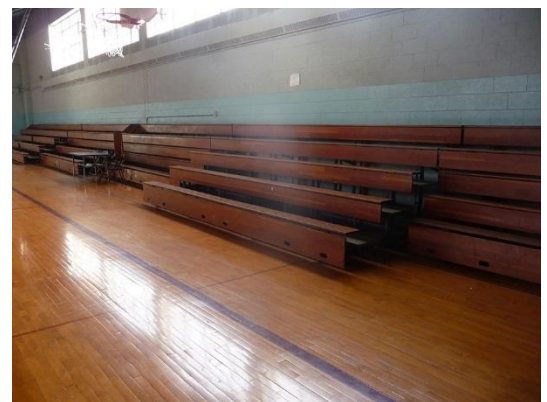


Key deficiencies needing attention:

- There is a damaged and uneven spot in the gym floor
- Gym lighting is outdated
- Restrooms are downstairs from the gymnasium- no ADA access
- There is no air conditioning in the gymnasium

Priority Recommendations:

- The entire gymnasium floor needs to be replaced or repaired



- Replace gymnasium lights with modern lighting
- Due to the structural and site issues with the facility, and since this facility is not managed by Parks and Recreation, it is recommended that the City halt all Parks and Recreation programming at this location.



Breckinridge Middle School gymnasium

Location: 3901 Williamson Road, NW

Facility Type: School - Gymnasium

Breckinridge Middle school is located on Williamson Road between Trinkle and Fleming Avenues, just south of Preston Park. The City uses the gymnasium for basketball practice and games. The gymnasium is in pretty good condition but requires HVAC work, does not have AC, and needs a divider to separate the two sides of the gym.



Crystal Springs Elementary School gymnasium

Location: 2620 Carolina Avenue, SW

Facility Type: School - Gymnasium

Crystal Springs Elementary School is located on Carolina Avenue between 26th and 27th Streets in south Roanoke. The City uses the gymnasium heavily during the winter for basketball practice. The gym is in good condition.

Fallon Park Elementary School gymnasium

Location: 502 19th Street, SE

Facility Type: School - Gymnasium

Fallon Park Elementary School is located on 19th Street just north of Dale Avenue in southeast Roanoke. The City uses the gymnasium November through March. The gym is in good condition and does not have any issues.

Fishburn Park Elementary School sports field and gymnasium

Location: 3057 Colonial Avenue, SW

Facility Type: School - Sports Field and Gymnasium

Fishburn Elementary School is located in southwest Roanoke at Colonial Avenue and McNeil Drive, next to James Madison Middle School and Fishburn Park. The City uses the gymnasium during the winter and the soccer field heavily during the spring and fall. The gym is in good condition other than some marks on the floor, and the soccer field is in fair condition and needs to be reseeded in the middle and around the goals. The gymnasium is ADA accessible, but the soccer field is not.

Garden City Elementary School gymnasium

Location: 3718 Garden City Blvd, SE

Facility Type: School - Gymnasium

Garden City Elementary School has a small gymnasium that is used by the City during the winter for basketball practice. The gym is in good condition except the floor is permanently stained from spilled sports drink. There is no AC in the gym, no room for spectator seating or access, and the facility is ADA accessible.

Key deficiencies needing attention:

- No air conditioning

Priority recommendations:

- Add air conditioning



Highland Park Elementary School gymnasium

Location: 1212 5th Street, SW

Facility Type: School - Gymnasium

Highland Park Elementary School is located in southwest Roanoke on 5th Street between Albemarle and Walnut Avenues. The City uses the gymnasium heavily throughout the winter. The school building is very old, and the gymnasium is in fair condition with a few cosmetic issues. The basketball hoops are 11 feet high and unable to be adjusted to the proper 10-foot height, so the school is planning to replace them. Items belonging to the school are being stored along the walls inside the gym because there is not adequate storage space within the school. The gym is ADA accessible.

Key deficiencies needing attention:

- Lack of adequate out-of-sight storage

Priority recommendations:

- Relocate non-athletic items to elsewhere in the building and add storage for athletic items



James Madison Middle School sports fields and gymnasium

Location: 1160 Overland Road, SW

Facility Type: School - Sports Fields and Gymnasium

James Madison Middle School is located in southwest Roanoke on Overland Road just south of Brambleton Avenue, next to Fishburn Park and Elementary School. The City uses the gymnasium heavily during the winter for basketball games and practice and uses the baseball fields occasionally for practice. The gymnasium is in good condition and the ball fields are in good condition.

**John P. Fishwick Middle School gymnasium**

Location: 1004 Montrose Avenue, SE

Facility Type: School - Gymnasium

John P. Fishwick Middle School is located at Montrose Avenue and 9th Street adjacent to Belmont Park in southeast Roanoke. The gymnasium is used heavily by the City during the winter for basketball games and practices. The gym is in fair condition. The floor is real wood and was installed about four years ago but was never sealed, so it needs to be sealed.

**Lincoln Terrace Elementary School gymnasium**

Location: 1802 Liberty Road, NW

Facility Type: School - Gymnasium

Lincoln Terrace Elementary School is located at Liberty Road and Burrell Street in northwest Roanoke next to Washington Park. The City uses the gymnasium for basketball practice heavily during the winter. The gym is in good condition. The basketball hoops cannot be adjusted but are scheduled to be replaced.

**Patrick Henry High School Sports Fields**

Location: 2102 Grandin Road, SW

Facility Type: School - Sports Fields

Patrick Henry High School is located at Grandin Road and Brandon Avenue in southwest Roanoke next to Shrine Hill Park. There is a new formal football field with bleachers and restrooms which the City uses lightly during the summer for a small football camp. The City does not use the facility for official games. The football field and restrooms are in very good condition and fully ADA accessible.



Preston Park Elementary School sports fields and gymnasium

Location: 3142 Preston Avenue, NW

Facility Type: School - Gymnasium

Preston Park Elementary School is located on Preston Avenue just east of Williamson Road. The gym is used only for basketball practice since there are no bleachers in the gym. The gymnasium is in very good condition other than two places on the outside wall where the vinyl has been cut and taped.

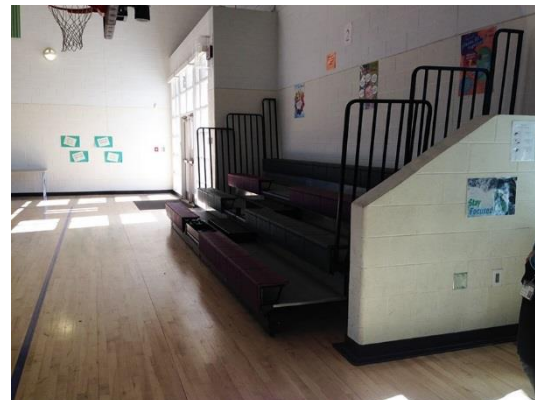


RAMS Elementary School gymnasium

Location: 1122 19th Street, NW

Facility Type: School - Gymnasium

RAMS Elementary School, which stands for Roanoke Academy for Math and Science Elementary, is located in central Roanoke at 19th Street, NW and Andrews Road, NW, next to Kennedy Park. The City uses the gymnasium there for instructional basketball games for young children. The gym is ADA accessible and in good condition with no problems.



Round Hill Elementary School gymnasium

Location: 2020 Oakland Blvd, NW

Facility Type: School - Gymnasium

Round Hill Elementary School is located on Oakland Blvd in northwest Roanoke. The gymnasium is used by the City for basketball practice, mostly during the winter, and is in good condition with no problems and is ADA accessible.

Key deficiencies needing attention:

- All the “bubble” gyms in the City school system are scheduled for Parks and Recreation programming. The small gymnasiums do not have sufficient floor space to allow for spectator access nor seating. Additionally, these gymnasiums do not have public restrooms nor storage

Priority recommendations:

- City should add new gymnasium space at all recreation centers so that the City can appropriately program indoor youth sports, classes, and programs.

**William Fleming High School sports fields**

Location: 3601 Ferncliff Avenue, NW

Facility Type: School - Sports Fields

William Fleming High School is located in northwest Roanoke on Ferncliff Avenue. The City uses the formal football field once a year for their annual championship football game. The City also uses the baseball, softball, and rectangular athletic fields. Fields are in good condition.

**Woodrow Wilson Middle School gymnasium**

Location: 1813 Carter Road, SW

Facility Type: School - Gymnasium

Woodrow Wilson Middle School is located on Carter Road in southwest Roanoke next to Raleigh Court Park. The gymnasium is used heavily during the winter by the City for basketball practice and games. The gym is in good condition. The only issue is there is not enough parking or storage during games.

PLAYROANOKE.COM



LPDA
LANDSCAPE ARCHITECTURE
LAND PLANNING

pros consulting
Inc.
Inspiring Communities to Action

