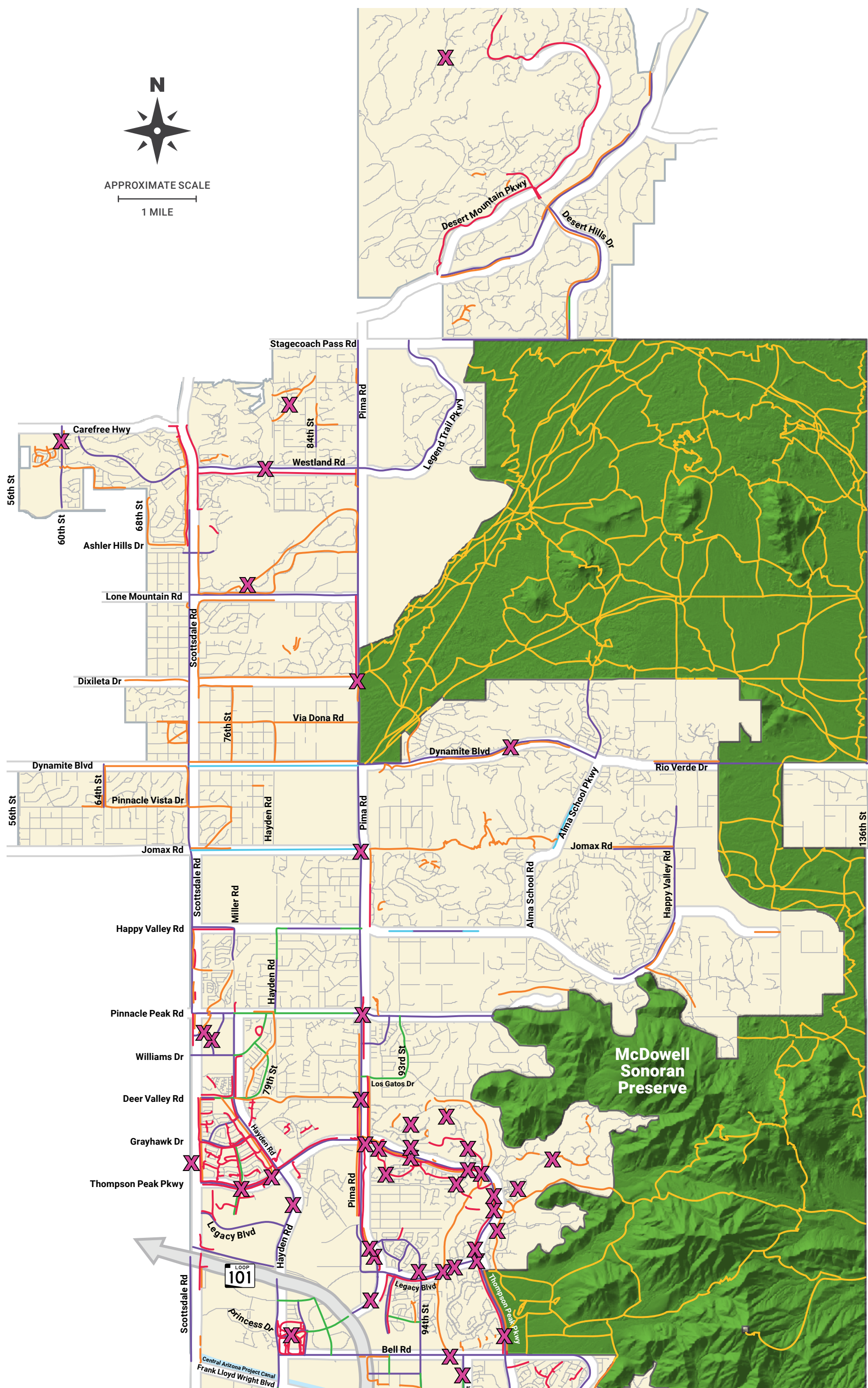


# BIKE & TRAILS MAP

NORTH OF FRANK LLOYD WRIGHT BLVD

FOR DETAILED PRESERVE TRAIL MAPS:  
Visit [ScottsdaleAZ.gov](http://ScottsdaleAZ.gov), search "preserve maps"

FOR THE MOST UP-TO-DATE CITYWIDE BIKEWAY,  
PATH AND TRAIL INFORMATION:  
Visit [ScottsdaleAZ.gov](http://ScottsdaleAZ.gov), search "public amenities"



- Bike Lane
- Bike Route
- Shared Use Path
- Unpaved Trail
- Paved Shoulder
- Preserve Trail
- Canal System
- X Crossings (bridges, tunnels, underpasses or enhanced crosswalks)

Notice: This document is provided for general information purpose only. The city of Scottsdale assumes no responsibility arising from the use of the information in this document. The city of Scottsdale does not warrant its accuracy, completeness, or suitability for any particular purpose. It should not be relied upon without field verification.

## BICYCLE DETECTION AT INTERSECTIONS

Bicycle detection is used at signalized intersections to alert the signal system that a bicycle is approaching and will need to cross the intersection. These intersections also offer extended crossing time for bicyclists.

Look for these signs, as well as pavement markings, at various locations around Scottsdale:



## SHARED USE PATH & TRAIL RESPONSIBILITIES

Scottsdale's paths and trails are designed for a variety of transportation modes. Keep path use safe and enjoyable for everyone by being courteous, sharing the path and following simple, common-sense rules.

**Motorized vehicles\*, including ATVs and motorcycles, are prohibited on paths and trails.**

\*Class 1 and 2 e-bikes and stand-up electric mini-scooters are allowed on paved paths as of December 13, 2018.

<b>Keep to the Right</b> Stay to the right unless passing or turning. Move to the right when stopping as well.	<b>Merging</b> Look both ways. Yield to through traffic at intersections.	<b>Signaling</b> Bicyclists should use their horn or bell when approaching and passing others.	<b>Respect Nature</b> Do not disturb wildlife. Stay on the path. Do not collect plant materials.
<b>Flooded Paths</b> Do not enter paths that are under water.	<b>Earphone Use</b> Earphones are not recommended when bicycling.	<b>Right-of-Way</b> Bicyclists yield to pedestrians. All users yield to equestrians. Use reasonable speed.	<b>Skating</b> Follow the same rules as pedestrians.
<b>Approaching Horses</b> When approaching a horse, speak in a soft voice to alert the horse and rider of your presence. Then move slowly while passing.	<b>Control Your Pets</b> Keep pets on a leash, and clean up after them.	<b>Biking at Night</b> Equip your bicycle with a headlight, rear light and reflectors for low light conditions.	<b>Wear a Helmet</b> Adults are not required by law to wear a helmet, but it is a good idea to always protect your head when biking.

## SCOTTSDALE EZ

Scottsdale EZ is a single, mobile-optimized system that lets you quickly report issues and provides the city with a consolidated tracking and reporting system.

- Using Scottsdale EZ is just that — easy!
- Visit [ScottsdaleAZ.gov/EZ](http://ScottsdaleAZ.gov/EZ) on your desktop or mobile device, or search online for "Scottsdale EZ" to find the application link
- Enter the request or issue in the search bar, select a top request or browse by category
- Choose an address related to the request, or use your device's GPS to pinpoint the location of the issue
- Provide details and submit a photo, if applicable
- Review your information and submit it
- City staff will get back to you to confirm they've received your request

The more accurate information you provide when submitting a request, the more quickly it can be assigned to staff and resolved.

Next time you notice something the city needs to take a look at or fix, don't hesitate — Scottsdale EZ makes it simple to report those issues and get them taken care of.

City of Scottsdale Transportation Department  
7447 E. Indian School Rd, Ste. 205 Scottsdale, AZ 85251



## BICYCLES, SKATEBOARDS, MOTORIZED SKATEBOARDS AND MULTIUSE PATHS

Scottsdale's Bicycle and Related Devices Ordinance (No. 4372) addresses operation and parking of bike-share and electric scooters. The ordinance makes the rules and expectations clear for the companies that own the devices and individuals who operate them. Go to [ScottsdaleAZ.gov](http://ScottsdaleAZ.gov), search "bike share ordinance" to review these rules.

# BIKE & TRAILS MAP

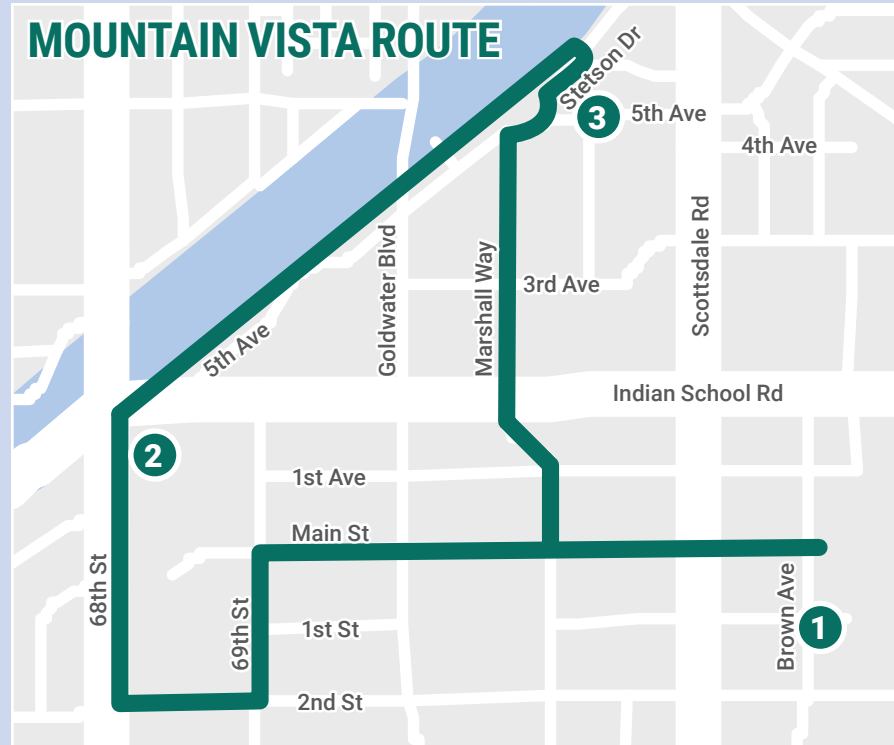
SOUTH OF FRANK LLOYD WRIGHT BLVD

FOR DETAILED PRESERVE TRAIL MAPS:  
Visit [ScottsdaleAZ.gov](http://ScottsdaleAZ.gov), search "preserve maps"

FOR THE MOST UP-TO-DATE CITYWIDE BIKEWAY,  
PATH AND TRAIL INFORMATION:  
Visit [ScottsdaleAZ.gov](http://ScottsdaleAZ.gov), search "public amenities"

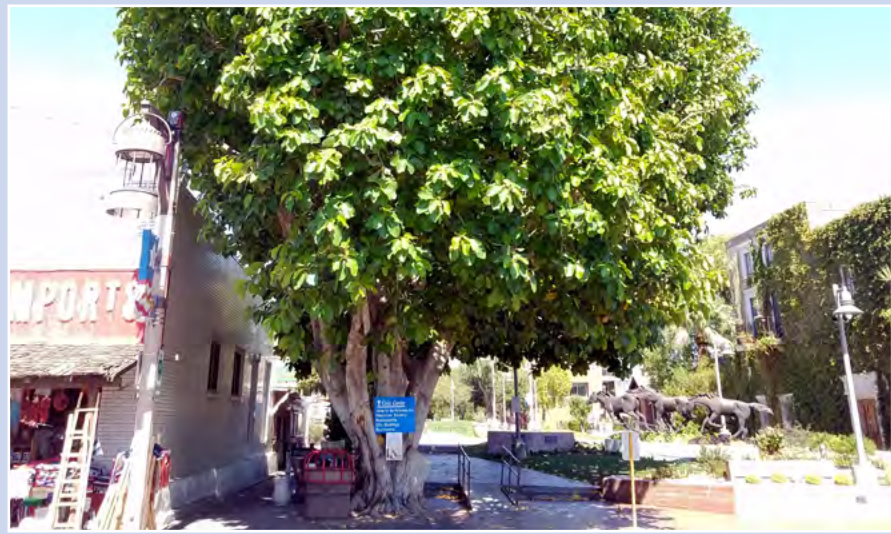
## TOUR OLD TOWN ON THE MOUNTAIN VISTA BIKE ROUTE

The Mountain Vista Bike Route is a 2.3 mile loop that begins and ends at Main Street and Brown Avenue at the famous Banyan Tree. Follow green bike route signs to two more informative stops where mountain views are framed with interpretive panels that tell stories of the mountains on display. The frame that views the McDowell Mountains is located along the south bank of the Arizona Canal between the Marshall Way and Soleri bridges. The Camelback Mountain View frame is located at 68th Street and the Arizona Canal.



## ROUTE STOPS

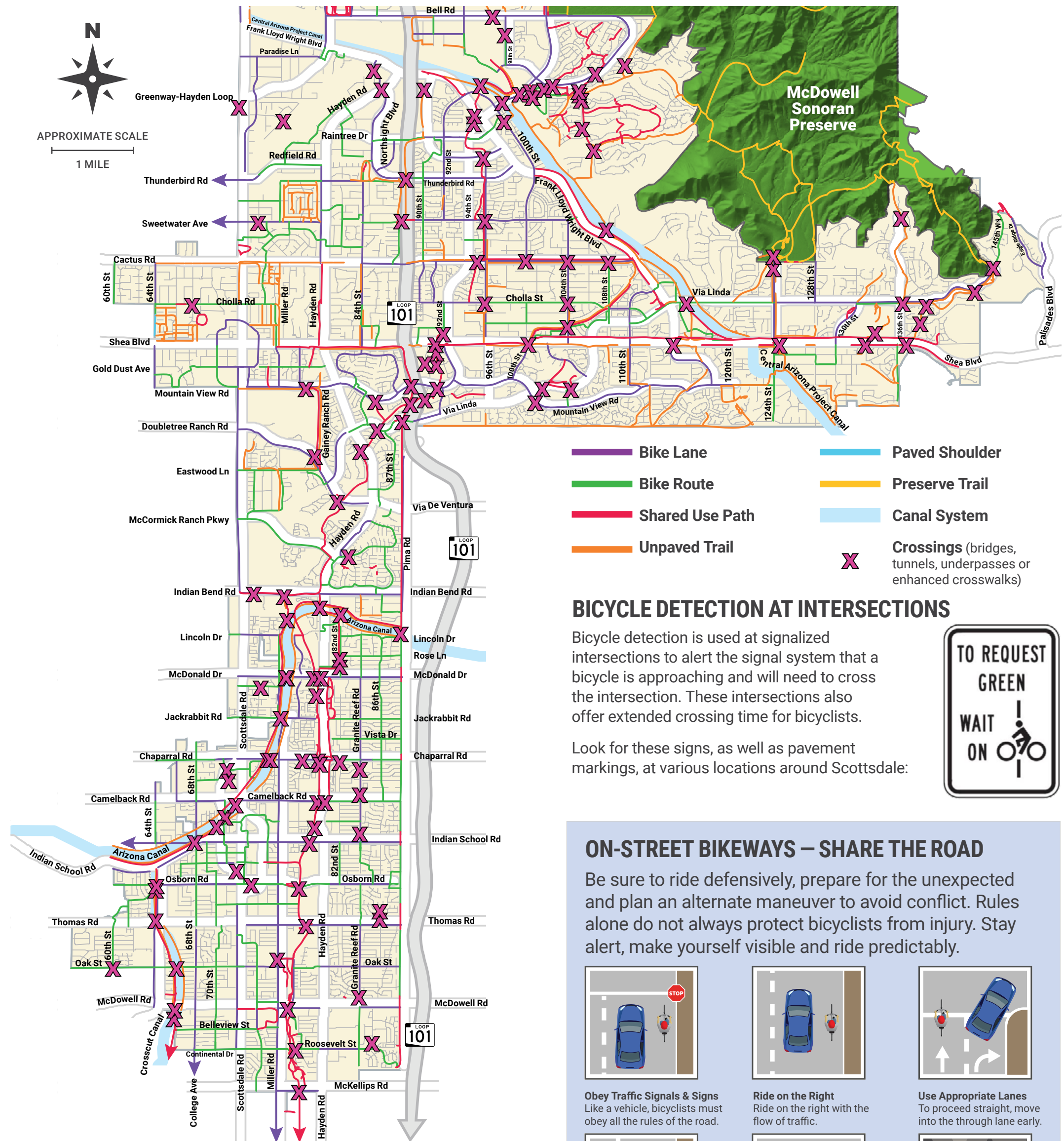
### 1. The Banyan Tree



### 2. Camelback Mountain View



### 3. McDowell Mountains View



## BIKE DETECTION AT INTERSECTIONS

Bicycle detection is used at signalized intersections to alert the signal system that a bicycle is approaching and will need to cross the intersection. These intersections also offer extended crossing time for bicyclists.

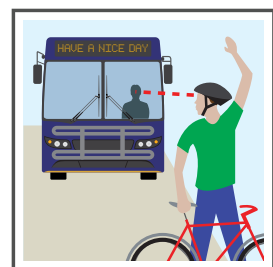
Look for these signs, as well as pavement markings, at various locations around Scottsdale:



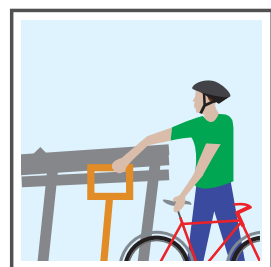
Notice: This document is provided for general information purpose only. The city of Scottsdale assumes no responsibility arising from the use of the information in this document. The city of Scottsdale does not warrant its accuracy, completeness, or suitability for any particular purpose. It should not be relied upon without field verification.

## BRING YOUR BIKE ON THE SCOTTSDALE TROLLEY

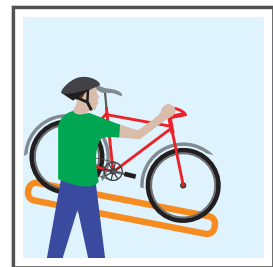
Scottsdale's free trolley system links residents and visitors to entertainment, restaurants, shopping, schools, parks and health services. Riders can transfer between four trolley routes and the regional transit system. To plan your trip, visit [ValleyMetro.org](http://ValleyMetro.org). To request a map or learn more, visit [ScottsdaleTrolley.com](http://ScottsdaleTrolley.com).



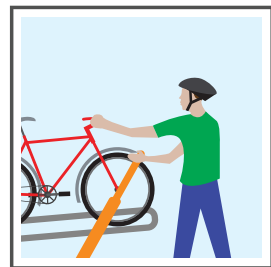
Signal driver before loading your bike.



Squeeze handle and pull down rack.



Place bike in rack slot.

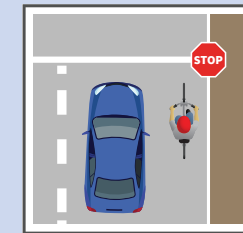


Grasp support arm and pull over tire to secure.

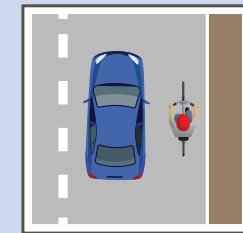
Passenger assumes all liability for loading, securing, unloading, theft or damage of bicycle.

## ON-STREET BIKEWAYS – SHARE THE ROAD

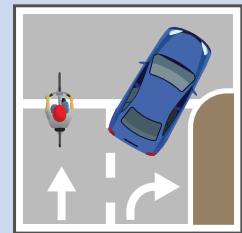
Be sure to ride defensively, prepare for the unexpected and plan an alternate maneuver to avoid conflict. Rules alone do not always protect bicyclists from injury. Stay alert, make yourself visible and ride predictably.



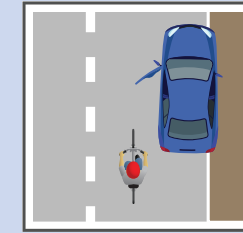
**Obey Traffic Signals & Signs**  
Like a vehicle, bicyclists must obey all the rules of the road.



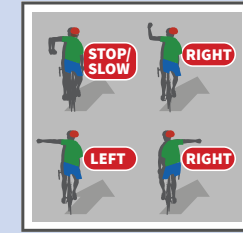
**Ride on the Right**  
Ride on the right with the flow of traffic.



**Use Appropriate Lanes**  
To proceed straight, move into the through lane early.



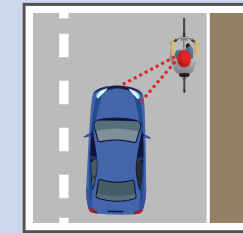
**Beware of Car Doors**  
Stay one car-door length away from parked cars.



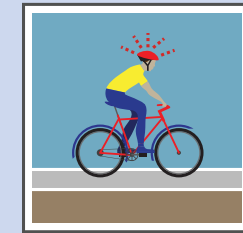
**Use Hand Signals**  
Check over your shoulder, and turn when safe to do so.



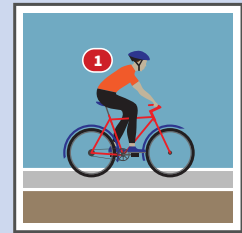
**Use Lights at Night**  
Law requires a white headlight and rear reflector at night. Adding a red rear light is even safer.



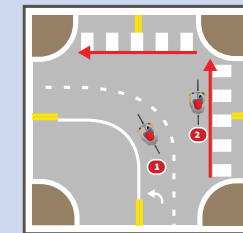
**Scan the Road Behind**  
Check behind you regularly, or use a mirror.



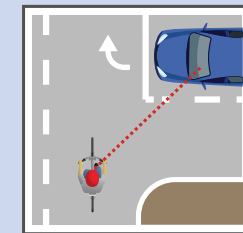
**Wear a Helmet**  
Adults are not required by law to wear a helmet, but it is a good idea to always protect your head when biking.



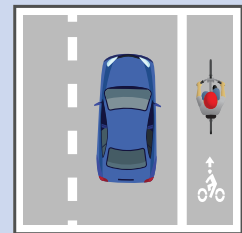
**One Person Per Bike**  
Riding double is only permitted with child carriers or tandem bikes.



**Turning Left: Two Options**  
Make a left turn like a vehicle by looking over your shoulder, signaling and moving into the left turn lane when it's safe. You may also make a left turn by going to the far side of the intersection, turning your bike and using the roadway or crosswalk.



**Make Eye Contact**  
Confirm that you are seen.



**Be Courteous**  
Share the road and the responsibilities.

The Arizona Revised Statutes - TITLE 28 TRANSPORTATION - ARTICLE 11 OPERATION OF BICYCLES  
28-811. Parent and guardian responsibility; applicability of article  
28-812. Applicability of traffic laws to bicycle riders.  
28-813. Riding on bicycles  
28.814. Clinging to vehicle  
28.815. Riding on roadways and bicycle paths; prohibition of motor vehicle traffic on bike paths  
28.816. Carrying article on bicycles  
28.817. Bicycle equipment  
28.818. Bicycle safety fund